

GUNA-HYPERTENSION- arnica montana - fumaric acid - gold - lead - melatonin - melilotus - olea europaea flower - pork kidney - rauwolfia serpentina - sodium pyruvate - spigelia - sus scrofa adrenal gland - sus scrofa diencephalon - ubidecarenone - viscum album fruit - solution/drops

Guna spa

Disclaimer: This homeopathic product has not been evaluated by the Food and Drug Administration for safety or efficacy. FDA is not aware of scientific evidence to support homeopathy as effective.

GUNA-HYPERTENSION

Arnica montana 12X Circulation support

Aurum metallicum 12X Pain reliever

Coenzyme Q 3X ANTIOXIDANT

Diencephalon 6X MENTAL ALERTNESS

Fumaricum acidum 3X ANTIOXIDANT

Glandula suprarenalis 200X DETOXIFICATION

Kidney 6X DETOXIFICATION

Melatonin 4C HORMONAL REGULATION

Melilotus officinalis 6X Circulation support

Natrum pyruvicum 3X ANTIOXIDANT

Olea europea 3X LYMPHATIC DETOXIFICATION

Plumbum metallicum 12X Metabolic support

Rauwolfia serpentina 6X BLOOD VESSEL SUPPORT

Spigelia anthelmia 6X Pain reliever

Viscum album 3X ANTIOXIDANT

Temporary relief of symptoms due to high blood pressure such as:

- **Headache**
- **Dizziness**

- **Stop use and ask doctor** if symptoms persist more than 5 days.
- **If pregnant or breast-feeding** ask a health professional before use.
- **Keep out of reach of children.** In case of overdose, get medical help or contact a Poison Control Center right away.
- Contains ethyl alcohol 30%

If pregnant or breast-feeding ask a doctor before use

Keep out of reach of children

Take 15 minutes before meals

Adults and children 12 years and older 20 drops in a little water, 2 times per day

Children between 12 years and 6 years of age 10 drops in a little water, 2 times per day

Children under 6 years Ask a doctor

Questions?: info@gunainc.com, tel. (484) 223-3500

Take 15 minutes before meals.

Inactive ingredient: Ethyl alcohol 30%.

Drug Facts (continued)
Questions?: info@gunainc.com
tel. (484) 223-3500
Do not use if temper-evident
seal is broken.

Drug Facts (continued)
Fumarius odorum 3X 0.04 ml /Antioxidant
Olea europea 3X 0.04 ml /lymphatic
detoxification
Inactive Ingredient: Ethyl alcohol 30%.

Warnings:
■ Stop use and ask doctor if symptoms persist more than 5 days. ■ If pregnant or breast-feeding ask a health professional before use. ■ Keep out of reach of children. In case of overdose, get medical help or contact a Poison Control Center right away. ▶

Directions:
Take 15 minutes before meals.

| | |
|--|--|
| Adults and children 12 years and older | 20 drops in a little water, 2 times per day |
| Children between 12 years and 6 years of age | 10 drops in a little water, 2 times per day |
| Children under 6 years | 5 drops in a glass of water, 2 times per day |

Other information:
• Store at 20°-25°C (68°-77°F).
• Excursions permitted between 15°-30°C (59°-86°F). ▶

Drug Facts (continued)
Uses: Temporary relief of symptoms due to high blood pressure such as: headache, dizziness.
These statements have not been evaluated by the FDA. They are based upon homeopathic principles.

Drug Facts
Active Ingredients Purpose

| | | |
|----------------------------|---------|----------------------|
| 30 ml contains: | | |
| Anica montana 12X | 3.52 ml | Circulation support |
| Aurum metallicum 12X | 3.52 ml | Pain reliever |
| Diacephalon 6X | 3.52 ml | Mental alertness |
| Glandula suprarenalis 200X | 3.52 ml | Detoxification |
| Kidney 6X | 3.52 ml | Detoxification |
| Melatonin 4C | 3.52 ml | Hormonal regulation |
| Melilotus officinalis 6X | 3.52 ml | Circulation support |
| Vicum album 3X | 3.52 ml | Antioxidant |
| Coenzyme Q 3X | 0.35 ml | Antioxidant |
| Natrum pyruvicum 3X | 0.35 ml | Antioxidant |
| Plumbum metallicum 12X | 0.35 ml | Metabolic support |
| Rauwolfia serpentina 6X | 0.35 ml | Blood vessel support |
| Scissalin cathartica 6X | 0.35 ml | Pain reliever ▶ |

Temporary relief of symptoms due to high blood pressure such as:

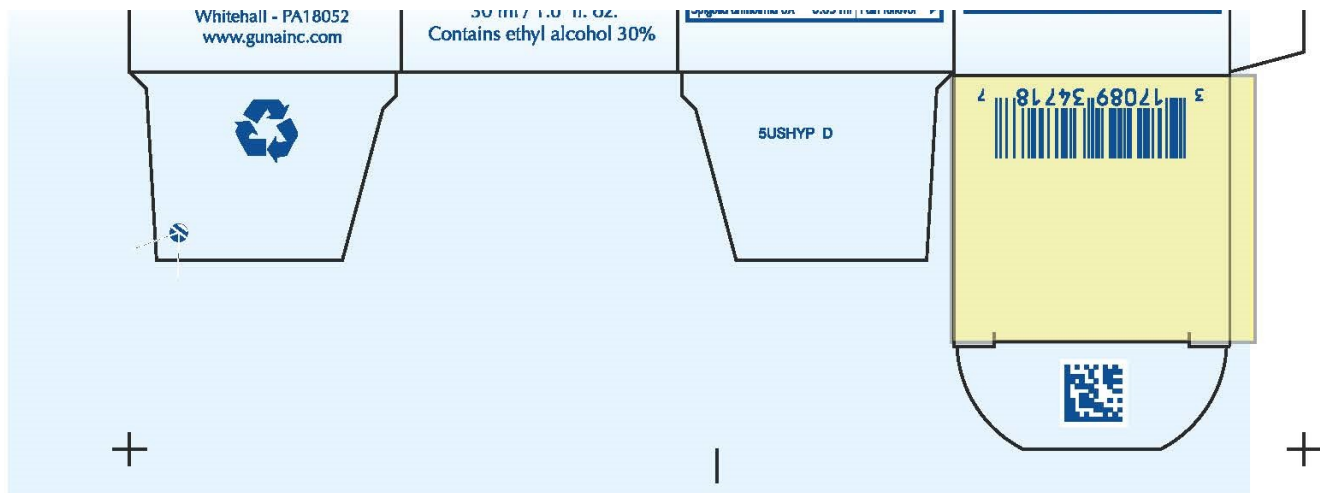
- Headache
- Dizziness

Manufactured by GUNA S.p.a. - Italy

GUNA
biotherapeutica

GUNA Inc.

NDC 17069-947-18



GUNA-HYPERTENSION

arnica montana - fumaric acid - gold - lead - melatonin - melilotus - olea europaea flower - pork kidney - rauwolfia serpentina - sodium pyruvate - spigelia - sus scrofa adrenal gland - sus scrofa diencephalon - ubidecarenone - viscum album fruit - solution/ drops

Product Information

| | | | |
|--------------------------------|----------------|---------------------------|---------------|
| Product Type | HUMAN OTC DRUG | Item Code (Source) | NDC:17089-347 |
| Route of Administration | ORAL | | |

Active Ingredient/Active Moiety

| Ingredient Name | Basis of Strength | Strength |
|--|--------------------------|---------------------|
| ARNICA MONTANA (UNII: O80TY208ZW) (ARNICA MONTANA - UNII:O80TY208ZW) | ARNICA MONTANA | 12 [hp_X] in 30 mL |
| GOLD (UNII: 79Y1949PYO) (GOLD - UNII:79Y1949PYO) | GOLD | 12 [hp_X] in 30 mL |
| UBIDECARENONE (UNII: EJ27X76M46) (UBIDECARENONE - UNII:EJ27X76M46) | UBIDECARENONE | 3 [hp_X] in 30 mL |
| SUS SCROFA DIENCEPHALON (UNII: 23PJ4252VL) (SUS SCROFA DIENCEPHALON - UNII:23PJ4252VL) | SUS SCROFA DIENCEPHALON | 6 [hp_X] in 30 mL |
| FUMARIC ACID (UNII: 88XHZ13131) (FUMARIC ACID - UNII:88XHZ13131) | FUMARIC ACID | 3 [hp_X] in 30 mL |
| SUS SCROFA ADRENAL GLAND (UNII: 398IYQ16YV) (SUS SCROFA ADRENAL GLAND - UNII:398IYQ16YV) | SUS SCROFA ADRENAL GLAND | 200 [hp_X] in 30 mL |
| PORK KIDNEY (UNII: X7BCI5P86H) (PORK KIDNEY - UNII:X7BCI5P86H) | PORK KIDNEY | 6 [hp_X] in 30 mL |
| MELATONIN (UNII: JL5DK93RCL) (MELATONIN - UNII:JL5DK93RCL) | MELATONIN | 4 [hp_C] in 30 mL |
| MELILOTUS (UNII: F22I9R6Q0X) (MELILOTUS - UNII:F22I9R6Q0X) | MELILOTUS | 6 [hp_X] in 30 mL |
| SODIUM PYRUVATE (UNII: POD38AIF08) (PYRUVIC ACID - UNII:8558G7RUTR) | SODIUM PYRUVATE | 3 [hp_X] in 30 mL |
| OLEA EUROPAEA FLOWER (UNII: 498M34P1VZ) (OLEA EUROPAEA FLOWER - UNII:498M34P1VZ) | OLEA EUROPAEA FLOWER | 3 [hp_X] in 30 mL |
| LEAD (UNII: 2P299V784P) (LEAD - UNII:2P299V784P) | LEAD | 12 [hp_X] in 30 mL |

| | | |
|---|----------------------|-------------------|
| RAUWOLFIA SERPENTINA (UNII: H192N84N1G) (RAUWOLFIA SERPENTINA - UNII:H192N84N1G) | RAUWOLFIA SERPENTINA | 6 [hp_X] in 30 mL |
| SPIGELIA (UNII: 467D26HS0B) (SPIGELIA - UNII:467D26HS0B) | SPIGELIA | 6 [hp_X] in 30 mL |
| VISCUM ALBUM FRUIT (UNII: P83EQ521R3) (VISCUM ALBUM FRUIT - UNII:P83EQ521R3) | VISCUM ALBUM FRUIT | 3 [hp_X] in 30 mL |

Inactive Ingredients

| Ingredient Name | Strength |
|-----------------------------------|---------------|
| ALCOHOL (UNII: 3K9958V90M) | 9 mL in 30 mL |

Packaging

| # | Item Code | Package Description | Marketing Start Date | Marketing End Date |
|---|------------------|---|----------------------|--------------------|
| 1 | NDC:17089-347-18 | 1 in 1 BOX | 12/21/2018 | |
| 1 | | 30 mL in 1 BOTTLE, DROPPER; Type 0: Not a Combination Product | | |

Marketing Information

| Marketing Category | Application Number or Monograph Citation | Marketing Start Date | Marketing End Date |
|------------------------|--|----------------------|--------------------|
| unapproved homeopathic | | 04/16/2008 | |

Labeler - Guna spa (430538264)

Establishment

| Name | Address | ID/FEI | Business Operations |
|----------|---------|-----------|------------------------|
| Guna spa | | 338587646 | manufacture(17089-347) |

Revised: 12/2018

Guna spa