

# **HONEY LEMON COUGH DROPS- menthol lozenge**

## **Topco Associates**

-----

### **Menthol 7.5 mg**

Active ingredient (in each drop)

Menthol 7.5 mg

Purpose

Cough suppressant / Oral anesthetic

Uses temporarily relieves:

cough as may occur with a cold

occasional minor irritation and sore throat

Warnings

Sore throat warning: if sore throat is severe, persists for more than 2 days, is accompanied or followed by fever, headache, rash, swelling, nausea, or vomiting, consult a doctor promptly. If sore mouth symptoms do not improve in 7 days, see your dentist or doctor promptly. These symptoms may be serious.

Ask a doctor before use if you have:

persistent or chronic cough such as occurs with smoking, asthma, or emphysema

cough accompanied by excessive phlegm (mucus)

Stop use and ask doctor if

cough persists for more than 7 days, tends to recur, or is accompanied by fever, rash, or persistent headache. These could be signs of a serious condition.

sore throat is severe, or irritation, pain or redness lasts or worsens

sore mouth does not improve in 7 days

If pregnant or breast-feeding, ask a health professional before use.

Keep out of reach of children.

Directions

adults and children 5 years and over - dissolve 1 lozenge slowly in mouth. Repeat every 2 hours as needed or as directed by a doctor.

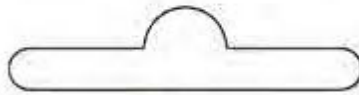
children under 5 years - ask a doctor

Other information

- 10 calories per drop

Inactive ingredients: Beta carotene, corn starch, corn syrup, eucalyptus oil, glycerin, honey, medium chain triglycerides, natural and artificial flavors, soybean oil, sucrose and water.

**Questions?** Or to report an adverse event call 1-888-423-0139.



RESEALABLE BAG

◀ Tear here ————— Tear here ▶

Do not use if bag is torn or open



COMPARE TO HALLS®  
ACTIVE INGREDIENT\*

# Cough Drops

MENTHOL COUGH SUPPRESSANT/  
ORAL ANESTHETIC

- Soothes Sore Throat Pain
- Temporarily Relieves Cough



HONEY LEMON FLAVOR

30 DROPS



PN-502431

This product is not manufactured or distributed by the owner of the registered trademark HALLS®.

**Questions?** Or to report an adverse event call 1-888-423-0139

**Inactive ingredients** Beta carotene, corn starch, corn syrup, eucalyptus oil, glycerin, honey, medium chain triglycerides, natural & artificial flavors, soybean oil, sucrose and water.

**Other information** ■ 10 calories per drop

**Directions**

adults and children 5 years and over	dissolve 1 lozenge slowly in mouth. Repeat every 2 hours as needed or as directed by a doctor.
children under 5 years	ask a doctor

**Stop use and ask doctor if**

- cough persists for more than 7 days, tends to recur, or is accompanied by fever, rash, or persistent headache;
- cough accompanied by excessive phlegm (mucus) smoking, asthma, or emphysema

**Ask a doctor before use if you have:**

- persistent or chronic cough such as occurs with
- cough accompanied by excessive phlegm (mucus)

**Stop use and ask doctor if**

- sore throat is severe, or irritation, pain or redness lasts
- sore throat does not improve in 7 days

**If pregnant or breast-feeding, ask a health professional before use. Keep out of reach of children.**

**GF GLUTEN FREE**

**QUALITY GUARANTEED**

This Topcare® product is laboratory tested to guarantee its highest quality. Your total satisfaction is guaranteed.

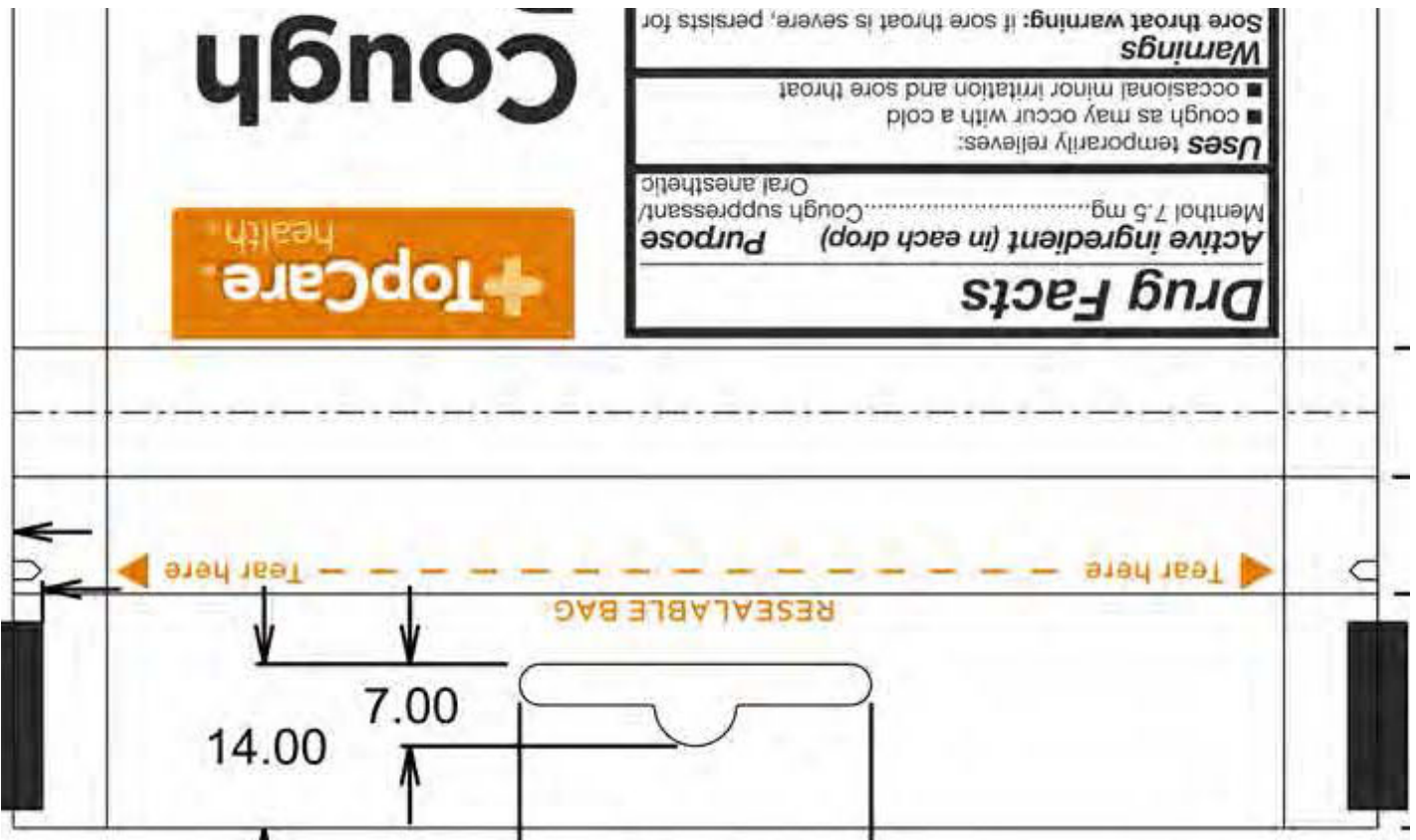
DISTRIBUTED BY TOPCO ASSOCIATES LLC  
 ELK GROVE VILLAGE, IL 60007  
 © TOPCO BSTA0418  
 QUESTIONS? 1-888-423-0139  
 topcare@topco.com  
 www.topcarebrand.com  
 MADE IN USA OF U.S. AND  
 IMPORTED INGREDIENTS.

**Drops**

MENTHOL COUGH SUPPRESSANT/  
 ORAL ANESTHETIC

- Soothes Sore Throat Pain
- Temporarily Relieves Cough

HONEY LEMON FLAVOR



## HONEY LEMON COUGH DROPS

menthol lozenge

### Product Information

<b>Product Type</b>	HUMAN OTC DRUG	<b>Item Code (Source)</b>	NDC:36800-816
<b>Route of Administration</b>	ORAL		

### Active Ingredient/Active Moiety

Ingredient Name	Basis of Strength	Strength
MENTHOL (UNII: L7T10EIP3A) (MENTHOL - UNII:L7T10EIP3A)	MENTHOL	7.5 mg

### Inactive Ingredients

Ingredient Name	Strength
WATER (UNII: 059QF0KO0R)	

### Product Characteristics

<b>Color</b>	yellow	<b>Score</b>	no score
<b>Shape</b>	OVAL	<b>Size</b>	16mm
<b>Flavor</b>	LEMON (honey and lemon)	<b>Imprint Code</b>	B
<b>Contains</b>			



## Packaging

#	Item Code	Package Description	Marketing Start Date	Marketing End Date
1	NDC:36800-816-30	30 in 1 BAG; Type 0: Not a Combination Product	03/20/2013	



## Marketing Information

Marketing Category	Application Number or Monograph Citation	Marketing Start Date	Marketing End Date
OTC Monograph Drug	M012	03/20/2013	

**Labeler** - Topco Associates (006935977)

**Registrant** - Bestco Inc. (002149136)

## Establishment

Name	Address	ID/FEI	Business Operations
Bestco Inc.		002149136	manufacture(36800-816)

