

**CHERRY COUGH DROPS- menthol lozenge**  
**TopCo Associates**

-----  
**Menthol 5.8 mg**

**Active ingredient (in each drop)**

Menthol 5.8 mg

**Purpose**

Cough suppressant / Oral anesthetic

Uses temporarily relieves:

cough as may occur with a cold

occasional minor irritation and sore throat

**Warnings**

**Sore throat warning:** if sore throat is severe, persists for more than 2 days, is accompanied or followed by fever, headache, rash, swelling, nausea, or vomiting, consult a doctor promptly. If sore mouth symptoms do not improve in 7 days, see your dentist or doctor promptly. These symptoms may be serious.

**Ask a doctor before use if you have:**

- persistent or chronic cough such as occurs with smoking, asthma, or emphysema
- cough accompanied by excessive phlegm (mucus)

**Stop use and ask a doctor if**

- cough persists for more than 7 days, tends to recur, or is accompanied by fever, rash, or persistent headache. These could be signs of a serious condition.
- sore throat is severe, or irritation, pain or redness lasts or worsens
- sore mouth does not improve in 7 days

**If pregnant or breast-feeding,** ask a health professional before use.

**Keep out of reach of children.**

**Directions**

adults and children 5 years and over - dissolve 1 lozenge slowly in mouth. Repeat every 2 hours as needed or as directed by a doctor.

children under 5 years - ask a doctor

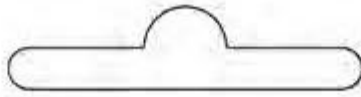
**Other information**

- 10 calories per drop

**Inactive ingredients:** Corn starch, corn syrup, eucalyptus oil, FD&C red no. 40, glycerin, medium chain triglycerides, natural and artificial flavors, soybean oil, sucrose and water.

**Questions?** Or to report an adverse event call **1-888-423-0139**.





RESEALABLE BAG

◀ Tear here — — — — — Tear here ▶

Do not use if bag is torn or open

**+** **TopCare**<sup>®</sup>  
health™

COMPARE TO HALLS<sup>®</sup>  
ACTIVE INGREDIENT\*

# Cough Drops

MENTHOL COUGH SUPPRESSANT/  
ORAL ANESTHETIC

- **Soothes Sore Throat Pain**
- **Temporarily Relieves Cough**



CHERRY  
FLAVOR

30 DROPS



PN-502426

This product is not manufactured or distributed by the owner of the registered trademark HALLS<sup>®</sup>.

**Questions?** Or to report an adverse event call  
1-888-423-0139

**Inactive ingredients** Corn starch, corn syrup, eucalyptus oil, FD&C red no. 40, glycerin, medium chain triglycerides, natural & artificial flavors, soybean oil, sucrose and water.

**Other information** ■ 10 calories per drop

children under 5 years	ask a doctor
adults and children 5 years and over	dissolve 1 lozenge slowly in mouth. Repeat every 2 hours as needed or as directed by a doctor.

**Directions**

before use. **Keep out of reach of children.**  
If pregnant or breast-feeding, ask a health professional

- sore throat does not improve in 7 days or worsens
- sore throat is severe, or irritation, pain or redness lasts These could be signs of a serious condition.
- cough persists for more than 7 days, tends to recur, or is accompanied by fever, rash, or persistent headache.

**Stop use and ask doctor if**

- cough accompanied by excessive phlegm (mucus)
- persistent or chronic cough such as occurs with smoking, asthma, or emphysema

**Ask a doctor before use if you have:**

**Warnings**

**Sore throat warning:** if sore throat is severe, persists for more than 2 days, is accompanied or followed by fever, headache, rash, swelling, nausea, or vomiting, consult a doctor promptly. If sore mouth symptoms do not improve in 7 days, see your dentist or doctor promptly. These symptoms may be serious.



This TopCare<sup>®</sup> product is laboratory tested to guarantee its highest quality. Your total satisfaction is guaranteed.

IMPORTED INGREDIENTS.  
MADE IN USA OF U.S. AND  
www.topcarebrand.com  
topcare@topco.com

QUESTIONS? 1-888-423-0139  
© TOPCO BSTA0418  
ELK GROVE VILLAGE, IL 60007  
DISTRIBUTED BY TOPCO ASSOCIATES LLC

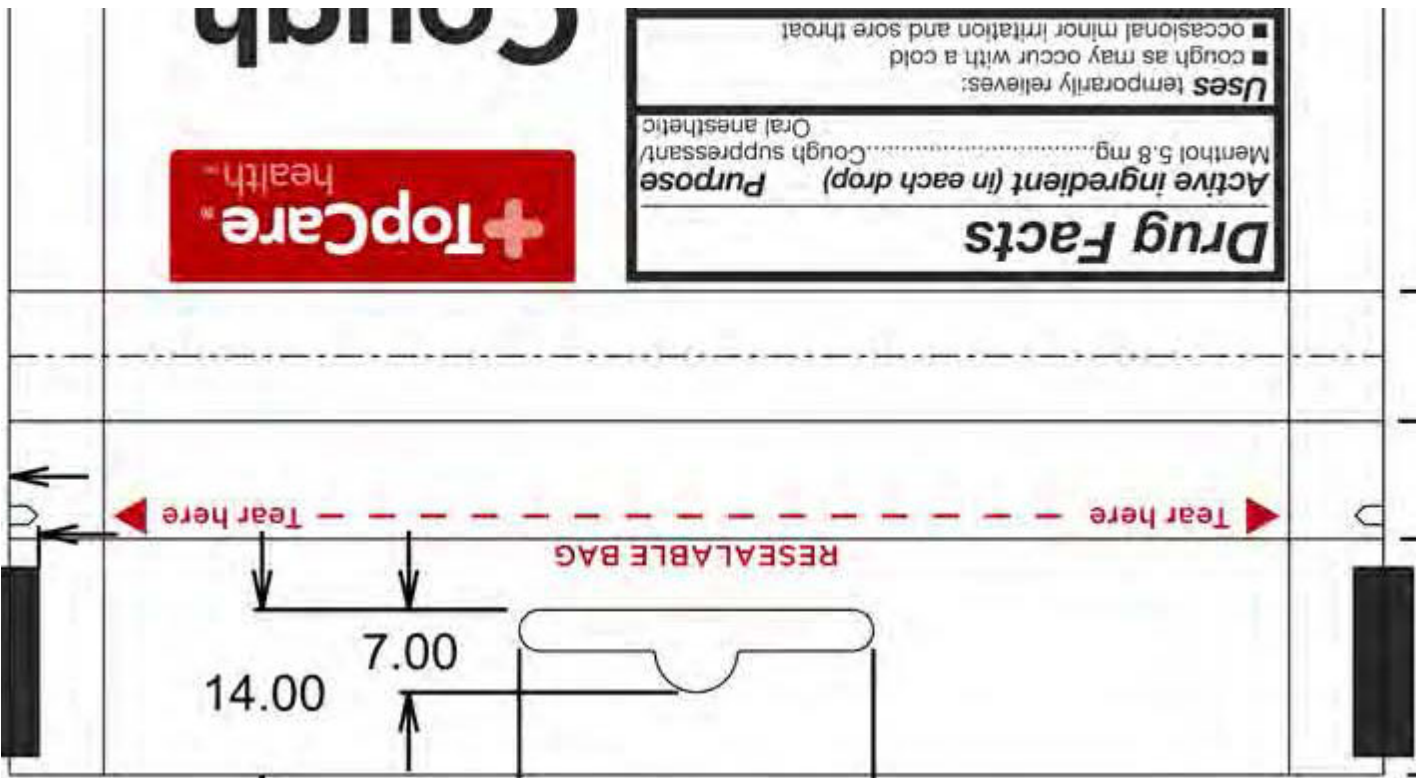
CHERRY FLAVOR

- Soothes Sore Throat Pain
- Temporarily Relieves Cough

MENTHOL COUGH SUPPRESSANT/  
ORAL ANESTHETIC

Cough Drops





## CHERRY COUGH DROPS

menthol lozenge

### Product Information

<b>Product Type</b>	HUMAN OTC DRUG	<b>Item Code (Source)</b>	NDC:36800-815
<b>Route of Administration</b>	ORAL		

### Active Ingredient/Active Moiety

Ingredient Name	Basis of Strength	Strength
MENTHOL (UNII: L7T10EIP3A) (MENTHOL - UNII:L7T10EIP3A)	MENTHOL	5.8 mg

### Inactive Ingredients

Ingredient Name	Strength
WATER (UNII: 059QF0KO0R)	

### Product Characteristics

<b>Color</b>	red	<b>Score</b>	no score
<b>Shape</b>	OVAL	<b>Size</b>	16mm
<b>Flavor</b>	CHERRY	<b>Imprint Code</b>	B
<b>Contains</b>			

### Packaging

#	Item Code	Package Description	Marketing Start Date	Marketing End Date
1	NDC:36800-815-30	30 in 1 BAG; Type 0: Not a Combination Product	03/20/2013	



### Marketing Information

Marketing Category	Application Number or Monograph Citation	Marketing Start Date	Marketing End Date
OTC Monograph Drug	M012	03/20/2013	

**Labeler** - TopCo Associates (006935977)

**Registrant** - Bestco Inc (002149136)

### Establishment

Name	Address	ID/FEI	Business Operations
Bestco Inc.		002149136	manufacture(36800-815)

