

# **NEXLIZET- bempedoic acid and ezetimibe tablet, film coated**

## **Esperion Therapeutics, Inc.**

### **HIGHLIGHTS OF PRESCRIBING INFORMATION**

These highlights do not include all the information needed to use NEXLIZET® safely and effectively. See full prescribing information for NEXLIZET.

**NEXLIZET (bempedoic acid and ezetimibe) tablets, for oral use**

**Initial U.S. Approval: 2020**

### **RECENT MAJOR CHANGES**

Indications and Usage (1)	03/2024
Dosage and Administration (2.1, 2.2)	03/2024
Contraindications (4)	03/2024
Warnings and Precautions (5.1, 5.2)	03/2024

### **INDICATIONS AND USAGE**

NEXLIZET, a combination of bempedoic acid, an adenosine triphosphate citrate lyase (ACL) inhibitor, and ezetimibe, a dietary cholesterol absorption inhibitor, is indicated:

- As an adjunct to diet, alone or in combination with other low-density lipoprotein cholesterol (LDL-C) lowering therapies, to reduce LDL-C in adults with primary hyperlipidemia, including heterozygous familial hypercholesterolemia (HeFH). (1)

The bempedoic acid component of NEXLIZET is indicated:

- To reduce the risk of myocardial infarction and coronary revascularization in adults who are unable to take recommended statin therapy (including those not taking a statin) with:
  - established cardiovascular disease (CVD), or
  - a high risk for a CVD event but without established CVD. (1)

### **DOSAGE AND ADMINISTRATION**

- Administer one tablet (180 mg bempedoic acid and 10 mg ezetimibe) orally once daily with or without food. (2.1)
- Swallow the tablet whole. (2.1)
- Coadministration with Bile Acid Sequestrants: Administer at least 2 hours before or at least 4 hours after bile acid sequestrants. (2.2)

### **DOSAGE FORMS AND STRENGTHS**

Tablets: 180 mg bempedoic acid/10 mg ezetimibe (3)

### **CONTRAINDICATIONS**

Known hypersensitivity to ezetimibe or bempedoic acid or any of the excipients in NEXLIZET. (4, 6.2)

### **WARNINGS AND PRECAUTIONS**

**Hyperuricemia:** Elevations in serum uric acid have occurred. Assess uric acid levels periodically as clinically indicated. Monitor for signs and symptoms of hyperuricemia, and initiate treatment with urate-lowering drugs as appropriate. (5.1)

**Tendon Rupture:** Tendon rupture has occurred. Discontinue NEXLIZET at the first sign of tendon rupture. Avoid NEXLIZET in patients who have a history of tendon disorders or tendon rupture. (5.2)

### **ADVERSE REACTIONS**

- Common adverse reactions with NEXLIZET in the primary hyperlipidemia trials (incidence  $\geq$  2% and more frequently than placebo) were upper respiratory tract infection, muscle spasms, hyperuricemia, back pain, abdominal pain or discomfort, bronchitis, pain in extremity, anemia, elevated liver enzymes, diarrhea, arthralgia, sinusitis, fatigue, and influenza. (6.1)
- The common adverse reaction associated with bempedoic acid in the cardiovascular outcomes trial (incidence  $\geq$  2% and more frequently than placebo) were hyperuricemia, renal impairment, anemia, elevated liver enzymes, muscle spasms, gout, and cholelithiasis. (6.1)

**To report SUSPECTED ADVERSE REACTIONS, contact Esperion at 833-377-7633 (833**

**ESPRMED) or FDA at 1-800-FDA-1088 or [www.fda.gov/medwatch](http://www.fda.gov/medwatch).**

---

**DRUG INTERACTIONS**

---

- *Simvastatin*: Avoid concomitant use of NEXLIZET with simvastatin greater than 20 mg. (7)
- *Pravastatin*: Avoid concomitant use of NEXLIZET with pravastatin greater than 40 mg. (7)
- *Cyclosporine*: Monitor cyclosporine concentrations. (7)
- *Fibrates*: If cholelithiasis is suspected in a patient receiving NEXLIZET and fenofibrate, consider alternative lipid-lowering therapy. (6.2, 7)

---

**USE IN SPECIFIC POPULATIONS**

---

- *Pregnancy*: Based on mechanism of action, may cause fetal harm. (8.1)
- *Lactation*: Breastfeeding is not recommended with NEXLIZET. (8.2)

**See 17 for PATIENT COUNSELING INFORMATION and FDA-approved patient labeling.**

**Revised: 3/2024**

---

**FULL PRESCRIBING INFORMATION: CONTENTS\***

**1 INDICATIONS AND USAGE**

**2 DOSAGE AND ADMINISTRATION**

- 2.1 Recommended Dosage and Administration
- 2.2 Coadministration with Bile Acid Sequestrants

**3 DOSAGE FORMS AND STRENGTHS**

**4 CONTRAINDICATIONS**

**5 WARNINGS AND PRECAUTIONS**

- 5.1 Hyperuricemia
- 5.2 Tendon Rupture

**6 ADVERSE REACTIONS**

- 6.1 Clinical Trials Experience
- 6.2 Postmarketing Experience

**7 DRUG INTERACTIONS**

**8 USE IN SPECIFIC POPULATIONS**

- 8.1 Pregnancy
- 8.2 Lactation
- 8.4 Pediatric Use
- 8.5 Geriatric Use
- 8.6 Renal Impairment
- 8.7 Hepatic Impairment

**10 OVERDOSAGE**

**11 DESCRIPTION**

**12 CLINICAL PHARMACOLOGY**

- 12.1 Mechanism of Action
- 12.2 Pharmacodynamics
- 12.3 Pharmacokinetics

**13 NONCLINICAL TOXICOLOGY**

- 13.1 Carcinogenesis, Mutagenesis, Impairment of Fertility

**14 CLINICAL STUDIES**

- 14.1 Primary Hyperlipidemia Trials in Adults
- 14.2 Cardiovascular Outcomes Trial in Adults With CVD or at High Risk for CVD

**16 HOW SUPPLIED/STORAGE AND HANDLING**

## 17 PATIENT COUNSELING INFORMATION

\* Sections or subsections omitted from the full prescribing information are not listed.

---

## FULL PRESCRIBING INFORMATION

### 1 INDICATIONS AND USAGE

NEXLIZET, a combination of bempedoic acid and ezetimibe, is indicated:

- As an adjunct to diet, alone or in combination with other low-density lipoprotein cholesterol (LDL-C) lowering therapies, to reduce LDL-C in adults with primary hyperlipidemia, including heterozygous familial hypercholesterolemia (HeFH).

The bempedoic acid component of NEXLIZET is indicated:

- To reduce the risk of myocardial infarction and coronary revascularization in adults who are unable to take recommended statin therapy (including those not taking a statin) with:
  - established cardiovascular disease (CVD), or
  - a high risk for a CVD event but without established CVD.

### 2 DOSAGE AND ADMINISTRATION

#### 2.1 Recommended Dosage and Administration

- The recommended dosage of NEXLIZET is one tablet orally once daily. One tablet of NEXLIZET contains 180 mg of bempedoic acid and 10 mg of ezetimibe.
- Swallow the tablet whole. NEXLIZET can be taken with or without food.
- If a dose is missed, take the missed dose as soon as possible. Do not double the next dose.
- After initiation of NEXLIZET, analyze lipid levels within 8 to 12 weeks.

#### 2.2 Coadministration with Bile Acid Sequestrants

Administer NEXLIZET either at least 2 hours before or at least 4 hours after administration of a bile acid sequestrant [see *Drug Interactions* (7)].

### 3 DOSAGE FORMS AND STRENGTHS

NEXLIZET is available as:

- Tablets: 180 mg/10 mg, blue, oval shaped, debossed with "818" on one side and "ESP" on the other side.

### 4 CONTRAINDICATIONS

NEXLIZET is contraindicated in patients with a prior hypersensitivity to ezetimibe or bempedoic acid or any of the excipients in NEXLIZET [see *Adverse Reactions* (6.2)]. Serious hypersensitivity reactions, such as anaphylaxis, angioedema, rash and urticaria

have been reported with ezetimibe or bempedoic acid.

## **5 WARNINGS AND PRECAUTIONS**

### **5.1 Hyperuricemia**

Bempedoic acid, a component of NEXLIZET, inhibits renal tubular OAT2 and may increase blood uric acid levels [see *Clinical Pharmacology* (12.3)]. In the primary hyperlipidemia trials [see *Clinical Studies* (14.1)], 26% of bempedoic acid-treated patients with normal baseline uric acid values (versus 9.5% placebo) experienced hyperuricemia one or more times, and 3.5% of patients experienced clinically significant hyperuricemia reported as an adverse reaction (versus 1.1% placebo). Increases in uric acid levels usually occurred within the first 4 weeks of treatment initiation, persisted throughout treatment, and returned to baseline following discontinuation of treatment. After 12 weeks of treatment, the mean placebo-adjusted increase in uric acid compared to baseline was 0.8 mg/dL for patients treated with bempedoic acid. In the cardiovascular outcomes trial [see *Clinical Studies* (14.2)], 16.4% of bempedoic acid-treated patients experienced clinically significant hyperuricemia reported as an adverse reaction (versus 8.2% placebo).

Elevated blood uric acid may lead to the development of gout. In the primary hyperlipidemia trials, gout was reported in 1.5% of patients treated with bempedoic acid versus 0.4% of patients treated with placebo. In the cardiovascular outcomes trial, gout was reported in 3.2% of patients treated with bempedoic acid and 2.2% treated with placebo.

Advise patients to contact their healthcare provider if symptoms of hyperuricemia occur. Assess serum uric acid when clinically indicated. Monitor patients for signs and symptoms of hyperuricemia, and initiate treatment with urate-lowering drugs as appropriate.

### **5.2 Tendon Rupture**

Bempedoic acid, a component of NEXLIZET, is associated with an increased risk of tendon rupture or injury. In the primary hyperlipidemia trials [see *Clinical Studies* (14.1)], tendon rupture occurred in 0.5% of patients treated with bempedoic acid versus 0% of placebo-treated patients and involved the rotator cuff (the shoulder), biceps tendon, or Achilles tendon. Tendon rupture occurred within weeks to months of starting bempedoic acid. In the cardiovascular outcomes trial [see *Clinical Studies* (14.2)], tendon rupture events occurred in 1.2% of bempedoic acid-treated patients versus 0.9% of placebo-treated patients. Tendon rupture may occur more frequently in patients over 60 years of age, in those taking corticosteroid or fluoroquinolone drugs, in patients with renal failure, and in patients with previous tendon disorders.

Discontinue NEXLIZET immediately if the patient experiences rupture of a tendon. Consider discontinuing NEXLIZET if the patient experiences joint pain, swelling, or inflammation. Advise patients to rest at the first sign of tendinitis or tendon rupture and to contact their healthcare provider if tendinitis or tendon rupture symptoms occur. Consider alternative therapy in patients with a history of tendon disorders or tendon rupture.

## 6 ADVERSE REACTIONS

The following clinically significant adverse reactions are described elsewhere in the labeling:

- Hyperuricemia [see *Warnings and Precautions (5.1)*]
- Tendon Rupture [see *Warnings and Precautions (5.2)*]

### 6.1 Clinical Trials Experience

Because clinical trials are conducted under widely varying conditions, adverse reaction rates observed in the clinical trials of a drug cannot be directly compared to rates in the clinical trials of another drug and may not reflect the rates observed in clinical practice.

#### Bempedoic acid

The data in Table 1 reflect exposure to bempedoic acid in two placebo-controlled primary hyperlipidemia trials that included 2,009 patients treated with bempedoic acid for 52 weeks (median treatment duration of 52 weeks) [see *Clinical Studies (14.1)*]. The mean age for bempedoic acid-treated patients was 65 years, 29% were female, 95% were White, 3% were Black or African American, 1% were Asian, and 1% were other races; 3% identified as Hispanic or Latino ethnicity. All patients received bempedoic acid 180 mg orally once daily plus maximally tolerated statin therapy alone or in combination with other lipid-lowering therapies. At baseline, 97% of patients had CVD and about 4% had a diagnosis of HeFH. Patients on simvastatin 40 mg/day or higher were excluded from the trials.

In the primary hyperlipidemia trials, adverse reactions led to discontinuation of treatment in 11% of bempedoic acid-treated patients and 8% of placebo-treated patients. The most common reasons for bempedoic acid treatment discontinuation were muscle spasms (0.5% versus 0.3% placebo), diarrhea (0.4% versus 0.1% placebo), and pain in extremity (0.3% versus 0.0% placebo). Adverse reactions reported in at least 2% of bempedoic acid-treated patients and more frequently than in placebo-treated patients are shown in Table 1.

**Table 1. Adverse Reactions ( $\geq 2\%$  and greater than placebo) in Bempedoic Acid-Treated Patients with Primary Hyperlipidemia and CVD or HeFH (Trials 2 and 3)**

<b>Adverse Reaction</b>	<b>Placebo* (N = 999) %</b>	<b>Bempedoic acid* (N = 2,009) %</b>
Upper respiratory tract infection	4.0	4.5
Muscle spasms	2.3	3.6
Hyperuricemia <sup>†</sup>	1.1	3.5
Back pain	2.2	3.3
Abdominal pain or discomfort <sup>†</sup>	2.2	3.1
Bronchitis	2.5	3.0
Pain in extremity	1.7	3.0
Anemia	1.9	2.8
Elevated liver		

Elevated liver enzymes <sup>†</sup>	0.8	2.1
-------------------------------------	-----	-----

\* Background therapy included statin ± other lipid-lowering therapies

† Grouped term that includes other related terms

In the cardiovascular outcomes trial in which 7,001 patients were exposed to bempedoic acid and 6,964 patients were exposed to placebo for a median of 3.1 years [see *Clinical Studies (14.2)*], adverse reactions led to discontinuation of treatment in 11% of bempedoic acid-treated patients and 10% of placebo-treated patients. Adverse reactions reported in at least 2% of bempedoic acid-treated patients and more frequently than placebo are shown in Table 2.

**Table 2. Adverse Reactions (≥ 2% and 0.5% greater than placebo) in Bempedoic Acid-Treated Patients with CVD or at High Risk for CVD (Trial 4)**

<b>Adverse Reaction</b>	<b>Placebo (N=6,964) %</b>	<b>Bempedoic Acid (N=7,001) %</b>
Hyperuricemia*	8	16
Renal impairment <sup>†</sup>	9	11
Anemia	4	5
Elevated liver enzymes*	3	4
Muscle spasms	3	4
Gout	2	3
Cholelithiasis	1	2

\* Grouped term that includes other related terms

† Renal impairment includes laboratory related terms including glomerular filtration rate decreased, blood creatinine increased and hematuria

## Other Adverse Reactions

### *Tendon Rupture*

In the hyperlipidemia trials, tendon rupture occurred in 0.5% of bempedoic acid-treated patients versus 0% of placebo-treated patients. In the cardiovascular outcomes trial, tendon rupture events occurred in 1.2% of bempedoic acid-treated patients versus 0.9% of placebo-treated patients.

### *Gout*

In the hyperlipidemia trials, gout occurred in 1.5% of bempedoic acid-treated patients versus 0.4% of placebo-treated patients. In the cardiovascular outcomes trial, gout occurred in 3.2% of bempedoic acid-treated patients versus 2.2% of placebo-treated patients.

## Laboratory Tests

Bempedoic acid was associated with persistent changes in multiple laboratory tests that occurred within the first 4 weeks of treatment, and returned to baseline following discontinuation of treatment.

### *Increase in Creatinine and Blood Urea Nitrogen*

In the hyperlipidemia trials, there was a mean increase in serum creatinine of 0.05 mg/dL compared to baseline with bempedoic acid at Week 12. Approximately 3.8% of patients treated with bempedoic acid had blood urea nitrogen values that doubled (versus 1.5% placebo), and about 2.2% of patients had creatinine values that increased by 0.5 mg/dL (versus 1.1% placebo). In the cardiovascular outcomes trial, 7.1% of patients had creatinine values that increased by 0.5 mg/dL (versus 5.5% placebo) and 9.5% of patients in the bempedoic acid group had BUN values that increased  $\geq 2\times$  baseline (versus 6.2% placebo).

### *Decrease in Hemoglobin and Leukocytes*

In the hyperlipidemia trials, approximately 5.1% of patients treated with bempedoic acid (versus 2.3% placebo) had decreases in hemoglobin levels of 2 or more g/dL and below the lower limit of normal on one or more occasion. Anemia was reported in 2.8% of patients treated with bempedoic acid and 1.9% of patients treated with placebo. Approximately 9.0% of bempedoic acid-treated patients with normal baseline leukocyte count had a decrease to less than the lower limit of normal on one or more occasion (versus 6.7% placebo). Leukocyte decrease was generally asymptomatic and did not require medical intervention. In the hyperlipidemia trials, there was a small imbalance in skin or soft tissue infections, including cellulitis (0.8% versus 0.4%), but there was no imbalance in other infections.

In the cardiovascular outcomes trial, 10.8% of patients (versus 7.4% placebo) had a decrease in hemoglobin of 2 or more g/dL and below the lower limit of normal. Anemia was reported in 4.7% of patients treated with bempedoic acid and 3.9% of patients treated with placebo. There were 9.3% of bempedoic acid-treated patients with a leukocyte count below the lower limit of normal (and normal at baseline) at any point (versus 6.8% placebo).

### *Increase in Platelet Count*

In the hyperlipidemia trials, approximately 10.1% of bempedoic acid-treated patients (versus 4.7% placebo) had increases in platelet counts of  $100 \times 10^9/L$  or more on one or more occasion. In the cardiovascular outcomes trial, 18.6% of patients in the bempedoic acid-treated group (versus 10.2% placebo) had an increase in platelet count of  $100 \times 10^9/L$  or more. Platelet count increase was asymptomatic and did not result in increased risk for thromboembolic events.

### *Increase in Liver Enzymes*

In the hyperlipidemia trials, increases in hepatic transaminases (AST and/or ALT) were observed with bempedoic acid. In most cases, the elevations were transient and resolved or improved with continued therapy or after discontinuation of therapy. Increases to more than  $3\times$  the upper limit of normal (ULN) in AST occurred in 1.4% of patients treated with bempedoic acid versus 0.4% of placebo patients, and increases to more than  $5\times$  ULN occurred in 0.4% of bempedoic acid-treated versus 0.2% of placebo-treated patients. Increases in ALT occurred with similar incidence between bempedoic acid- and placebo-treated patients. Elevations in transaminases were generally asymptomatic and not associated with elevations  $\geq 2\times$  ULN in bilirubin or with cholestasis.

In the cardiovascular outcomes trial, the incidence of repeated and confirmed ALT

and/or AST >3× ULN was 1.6% in the bempedoic acid-treated group (versus 1.0% placebo). A higher percentage of patients in the bempedoic acid-treated group had hepatic enzyme elevations versus placebo (4.5% versus 3.0%, respectively).

#### *Increase in Creatine Kinase*

In the hyperlipidemia trials, approximately 1.0% of patients (versus 0.6% placebo) had elevations of CK levels of 5 or more times the normal value on one or more occasions, and 0.4% of patients (versus 0.2% placebo) had elevations of CK levels of 10 or more times.

#### Ezetimibe

In 10 double-blind, placebo-controlled clinical trials [see *Clinical Studies (14.1)*], 2,396 patients with primary hyperlipidemia (age range 9 to 86 years, 50% were female, 90% were White, 5% were Black or African American, 2% were Asian, 3% other races; 3% identified as Hispanic or Latino ethnicity) and elevated LDL-C were treated with ezetimibe 10 mg/day for a median treatment duration of 12 weeks (range 0 to 39 weeks).

Adverse reactions reported in ≥ 2% of patients treated with ezetimibe and at an incidence greater than placebo in placebo-controlled studies of ezetimibe are shown in Table 3.

**Table 3. Adverse Reactions Occurring in ≥ 2% and greater than placebo in Ezetimibe-treated Patients**

<b>Adverse Reaction</b>	<b>Placebo (%) N = 1,159</b>	<b>Ezetimibe 10 mg (%) N = 2,396</b>
Upper respiratory tract infection	2.5	4.3
Diarrhea	3.7	4.1
Arthralgia	2.2	3.0
Sinusitis	2.2	2.8
Pain in extremity	2.5	2.7
Fatigue	1.5	2.4
Influenza	1.5	2.0

#### NEXLIZET

In a 4-arm, 12-week, randomized, double-blind, placebo-controlled, parallel group, factorial trial, 85 patients received NEXLIZET (180 mg of bempedoic acid and 10 mg of ezetimibe) once daily [see *Clinical Studies (14.1)*]. The mean age for NEXLIZET-treated patients was 62 years, 51% were female, 78% were White, 19% were Black or African American, 2% were Asian, and 1% were American Indian or Alaska Native; 11% identified as Hispanic or Latino ethnicity. At baseline, 61% of patients had CVD and/or a diagnosis of HeFH. All patients received NEXLIZET plus maximally tolerated statin therapy. Patients taking simvastatin 40 mg/day or higher and patients taking non-statin lipid-lowering therapy (including fibrates, niacin, bile acid sequestrants, ezetimibe, and PCSK9 inhibitors) were excluded from the trial.

Adverse reactions led to discontinuation of treatment in 8% of patients on NEXLIZET,



5% of patients on placebo, 10% of patients on bempedoic acid, and 12% of patients on ezetimibe. The most common reason for NEXLIZET treatment discontinuation was oral discomfort (2% NEXLIZET versus 0% placebo). The most commonly reported adverse reactions (incidence  $\geq$  3% and greater than placebo) observed with NEXLIZET, but not observed in clinical trials of bempedoic acid or ezetimibe, were urinary tract infection (5.9% NEXLIZET versus 2.4% placebo), nasopharyngitis (4.7% NEXLIZET versus 0% placebo), and constipation (4.7% NEXLIZET versus 0% placebo).

## 6.2 Postmarketing Experience

The following additional adverse reactions have been reported in postmarketing experience for ezetimibe and/or bempedoic acid. Because these reactions are reported voluntarily from a population of uncertain size, it is not always possible to reliably estimate their frequency or establish a causal relationship to drug exposure.

*Blood Disorders:* thrombocytopenia

*Gastrointestinal Disorders:* abdominal pain; pancreatitis; nausea

*Hepatobiliary Disorders:* elevations in liver transaminases, including elevations more than 5 $\times$  ULN; hepatitis; cholelithiasis; cholecystitis

*Immune System Disorders:* Hypersensitivity reactions including: anaphylaxis, angioedema, wheezing, rash, and urticaria

*Musculoskeletal Disorders:* elevated creatine phosphokinase; myopathy/rhabdomyolysis

*Nervous System Disorders:* dizziness; paresthesia; depression; headache

*Skin and Subcutaneous Tissue Disorders:* erythema multiforme

## 7 DRUG INTERACTIONS

No specific pharmacokinetic drug interaction studies with NEXLIZET have been conducted. Table 4 lists drug interactions with NEXLIZET that have been identified in studies with bempedoic acid or ezetimibe.

**Table 4. Clinically Important Drug Interactions with NEXLIZET**

<b>Simvastatin</b>	
<i>Clinical Impact:</i>	Concomitant use of NEXLIZET with simvastatin causes an increase in simvastatin concentration and may increase the risk of simvastatin-related myopathy [see <i>Clinical Pharmacology</i> (12.3)].
<i>Intervention:</i>	Avoid concomitant use of NEXLIZET with simvastatin greater than 20 mg.
<b>Pravastatin</b>	
<i>Clinical Impact:</i>	Concomitant use of NEXLIZET with pravastatin causes an increase in pravastatin concentration and may increase the risk of pravastatin-related myopathy [see <i>Clinical Pharmacology</i> (12.3)].
<i>Intervention:</i>	Avoid concomitant use of NEXLIZET with pravastatin greater than 40 mg.

<b>Cyclosporine</b>	
<i>Clinical Impact:</i>	Concomitant use of NEXLIZET and cyclosporine increases ezetimibe and cyclosporine concentrations. The degree of increase in ezetimibe exposure may be greater in patients with severe renal insufficiency [see <i>Clinical Pharmacology</i> (12.3)].
<i>Intervention:</i>	Monitor cyclosporine concentrations in patients receiving NEXLIZET and cyclosporine. In patients treated with cyclosporine, weigh the potential effects of the increased exposure to ezetimibe from concomitant use against the benefits of alterations in lipid levels provided by NEXLIZET.
<b>Fibrates</b>	
<i>Clinical Impact:</i>	Both fenofibrate and ezetimibe may increase cholesterol excretion into the bile, leading to cholelithiasis. Coadministration of NEXLIZET with fibrates other than fenofibrate is not recommended [see <i>Adverse Reactions</i> (6.1)].
<i>Intervention:</i>	If cholelithiasis is suspected in a patient receiving NEXLIZET and fenofibrate, gallbladder studies are indicated and alternative lipid-lowering therapy should be considered.
<b>Cholestyramine</b>	
<i>Clinical Impact:</i>	Concomitant use of NEXLIZET and cholestyramine decreases ezetimibe concentration. This may result in a reduction of efficacy. [see <i>Clinical Pharmacology</i> (12.3)]
<i>Intervention:</i>	Administer NEXLIZET either at least 2 hours before or at least 4 hours after bile acid sequestrants [see <i>Dosage and Administration</i> (2.2)].

## 8 USE IN SPECIFIC POPULATIONS

### 8.1 Pregnancy

#### Risk Summary

Discontinue NEXLIZET when pregnancy is recognized unless the benefits of therapy outweigh the potential risks to the fetus.

There are insufficient data on bempedoic acid use in pregnant women to evaluate for a drug-associated risk of major birth defects, miscarriage, or adverse maternal or fetal outcomes. There are insufficient data on ezetimibe use in pregnant women to evaluate for a drug-associated risk of major birth defects, miscarriage, or adverse maternal or fetal outcomes. In animal reproduction studies, bempedoic acid was not teratogenic in rats and rabbits when administered at doses resulting in exposures up to 11 and 12 times, respectively, the human exposures at the maximum clinical dose, based on AUC. In oral (gavage) embryo-fetal development studies of ezetimibe conducted in rats and rabbits during organogenesis, there was no evidence of maternal toxicity or embryo-

fetal teratogenic or toxicologic effects at exposures up to 10 and 150 times the human exposure, respectively, based on AUC (see *Data*). NEXLIZET decreases cholesterol synthesis and possibly the synthesis of other biologically active substances derived from cholesterol; therefore, NEXLIZET may cause fetal harm when administered to pregnant women based on the mechanism of action [see *Clinical Pharmacology (12.1)*]. In addition, treatment of hyperlipidemia is not generally necessary during pregnancy. Atherosclerosis is a chronic process and the discontinuation of lipid-lowering drugs during pregnancy should have little impact on the outcome of long-term therapy of primary hyperlipidemia for most patients.

The estimated background risk of major birth defects and miscarriage for the indicated population is unknown. In the U.S. general population, the estimated background risk of major birth defects and miscarriage in clinically recognized pregnancies is 2-4% and 15-20%, respectively.

Report pregnancies to the Esperion Therapeutics, Inc. Adverse Event reporting line at 1-833-377-7633.

## Data

### *Animal Data*

#### *Bempedoic acid*

Bempedoic acid was not teratogenic when given orally at doses of 60 and 80 mg/kg/day, resulting in 11 and 12 times the systemic exposure in humans at the maximum recommended human dose (MRHD) of 180 mg to pregnant rats and rabbits, respectively. In an embryofetal development study in rats, bempedoic acid was given orally to pregnant rats at 10, 30, and 60 mg/kg/day during the period of organogenesis from gestation day 6 to 17. There were increases in the incidence of non-adverse fetal skeletal variations (bent long bones and bent scapula and incomplete ossification) at doses  $\geq 10$  mg/kg/day (less than the clinical exposure) in the absence of maternal toxicity. At maternally toxic doses, bempedoic acid caused decreases in the numbers of viable fetuses, increases in post-implantation loss, and increased total resorptions at 60 mg/kg/day (11 times MRHD) and reduced fetal body weight at  $\geq 30$  mg/kg/day (4 times the MRHD). No adverse development effects were observed when bempedoic acid was given to pregnant rabbits during the period of organogenesis (gestation day 6 to 18) at doses up to 80 mg/kg/day (12 times MRHD).

In a pre- and post-natal development study in pregnant rats given oral doses of bempedoic acid at 5, 10, 20, 30 and 60 mg/kg/day throughout pregnancy and lactation (gestation day 6 to lactation day 20), there were adverse effects on delivery in the presence of maternal toxicity, including: increases in stillborn pups, reductions in numbers of live pups, pup survival, pup growth and slight delays in learning and memory at  $\geq 10$  mg/kg/day (at exposures equivalent to the MRHD).

#### *Ezetimibe*

In oral (gavage) embryo-fetal development studies of ezetimibe conducted in rats (gestation days 6-15) and rabbits (gestation days 7-19), there was no evidence of maternal toxicity or embryo-lethal effects at the doses tested (250, 500, 1,000 mg/kg/day). In rats, increased incidences of common fetal skeletal findings (extra pair of thoracic ribs, unossified cervical vertebral centra, shortened ribs) were observed at 1,000 mg/kg/day (approximately 10 times the human exposure at 10 mg daily based on

AUC<sub>0-24hr</sub> for total ezetimibe). In rabbits treated with ezetimibe, an increased incidence of extra thoracic ribs was observed at 1,000 mg/kg/day (150 times the human exposure at 10 mg daily based on AUC<sub>0-24hr</sub> for total ezetimibe). The animal-to-human exposure multiple for total ezetimibe at the no-observed effect level was 6 times for rat and 134 times for rabbit.

Fetal exposure to ezetimibe (conjugated and unconjugated) was confirmed in subsequent placental transfer studies conducted using a maternal dose of 1,000 mg/kg/day. The fetal maternal plasma exposure ratio (total ezetimibe) was 1.5 for rats on gestation day 20 and 0.03 for rabbits on gestation day 22.

The effect of ezetimibe on prenatal and postnatal development and maternal function was evaluated in pregnant rats at doses of 100, 300 or 1,000 mg/kg/day from gestation day 6 through lactation day 21. No maternal toxicity or adverse developmental outcomes were observed up to and including the highest dose tested (17 times the human exposure at 10 mg daily based on AUC<sub>0-24hr</sub> for total ezetimibe).

Multiple-dose studies of ezetimibe given in combination with statins in rats and rabbits during organogenesis resulted in higher ezetimibe and statin exposures. Reproductive findings occurred at lower doses in combination therapy compared to monotherapy.

#### *Bempedoic acid/ezetimibe fixed combination drug product (FCDP)*

In a combination embryofetal development study in rats, bempedoic acid and ezetimibe were given orally at 4 and 112-times MRHD (based on AUC) during the period of organogenesis (gestation day 6 to 17) in pregnant rats. Bempedoic acid in combination with ezetimibe did not alter the effects on embryo-fetal development profile of bempedoic acid or ezetimibe.

## **8.2 Lactation**

### Risk Summary

There is no information regarding the presence of bempedoic acid in human or animal milk, the effects of the drug on the breastfed infant, or the effects of the drug on milk production. There is no information about the presence of ezetimibe in human milk. Ezetimibe is present in rat milk (*see Data*). When a drug is present in animal milk, it is likely that the drug will be present in human milk. There is no information about the effects of ezetimibe on the breastfed infant or the effects of ezetimibe on milk production.

NEXLIZET decreases cholesterol synthesis and possibly the synthesis of other biologically active substances derived from cholesterol and may cause harm to the breastfed infant. Because of the potential for serious adverse reactions in a breastfed infant, based on the mechanism of action, advise patients that breastfeeding is not recommended during treatment with NEXLIZET [*see Use in Specific Populations (8.1), Clinical Pharmacology (12.1)*].

### Data

#### *Animal Data*

Ezetimibe was present in the milk of lactating rats. The pup to maternal plasma ratio for total ezetimibe was 0.5 on lactation day 12.

## 8.4 Pediatric Use

The safety and effectiveness of NEXLIZET have not been established in pediatric patients.

## 8.5 Geriatric Use

Of the 301 patients in the clinical trial of NEXLIZET, 149 (50%) were 65 years of age and older, while 49 (16%) were 75 years of age and over. No overall differences in safety or effectiveness of NEXLIZET have been observed between patients 65 years of age and older and younger adult patients.

## 8.6 Renal Impairment

No dosage adjustment is necessary in patients with mild or moderate renal impairment. There is limited experience with bempedoic acid in patients with severe renal impairment (eGFR < 30mL/min/1.73 m<sup>2</sup>), and bempedoic acid has not been studied in patients with end-stage renal disease (ESRD) receiving dialysis [see *Clinical Pharmacology* (12.3)].

## 8.7 Hepatic Impairment

No dosage adjustment is necessary in patients with mild hepatic impairment (Child-Pugh A) [see *Clinical Pharmacology* (12.3)]. NEXLIZET is not recommended in patients with moderate or severe hepatic impairment (Child-Pugh B or C) due to the unknown effects of the increased exposure to ezetimibe [see *Clinical Pharmacology* (12.3)].

## 10 OVERDOSAGE

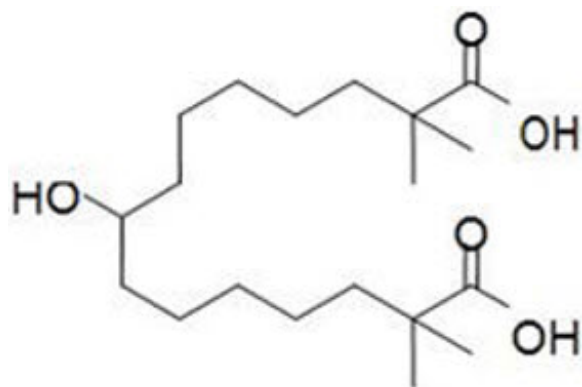
There is no clinical experience with NEXLIZET overdosage. In the event of an overdosage, consider contacting the Poison Help line (1-800-222-1222) or a medical toxicologist for additional overdosage management recommendations.

## 11 DESCRIPTION

NEXLIZET tablets, for oral use, contain bempedoic acid, an adenosine triphosphate-citrate lyase (ACL) inhibitor, and ezetimibe, a dietary cholesterol absorption inhibitor.

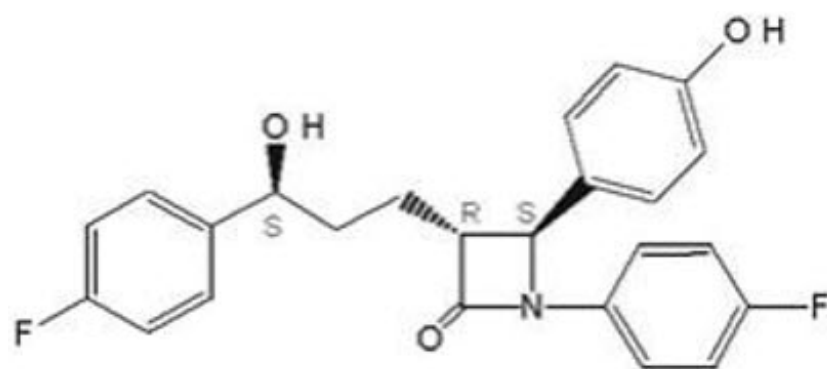
The chemical name for bempedoic acid is 8-hydroxy-2,2,14,14-tetramethyl-pentadecanedioic acid. The molecular formula is C<sub>19</sub>H<sub>36</sub>O<sub>5</sub>, and the molecular weight is 344.5 grams per mole. Bempedoic acid is a white to off-white crystalline powder that is highly soluble in ethanol, isopropanol and pH 8.0 phosphate buffer, and insoluble in water and aqueous solutions below pH 5.

Structural formula:



The chemical name for ezetimibe is 1-(4-fluorophenyl)-3(R)-[3-(4-fluorophenyl)-3(S)-hydroxypropyl]-4(S)-(4-hydroxyphenyl)-2-azetidinone. The molecular formula is  $C_{24}H_{21}F_2NO_3$  and the molecular weight is 409.4 grams per mole. Ezetimibe is a white, crystalline powder that is freely to very soluble in ethanol, methanol, and acetone and practically insoluble in water.

Structural formula:



Each film-coated tablet of NEXLIZET contains 180 mg of bempedoic acid and 10 mg of ezetimibe, and the following inactive ingredients: colloidal silicon dioxide, hydroxy propyl cellulose, lactose monohydrate, magnesium stearate, microcrystalline cellulose, povidone K30, sodium lauryl sulfate, sodium starch glycolate. The film coating comprises of FD&C Blue #1/Brilliant Blue FCF Aluminum Lake, FD&C Blue #2/Indigo Carmine Aluminum Lake, glyceryl monocaprylocaprate, partially hydrolyzed polyvinyl alcohol, sodium lauryl sulfate, talc, and titanium dioxide.

## 12 CLINICAL PHARMACOLOGY

### 12.1 Mechanism of Action

NEXLIZET contains bempedoic acid and ezetimibe. NEXLIZET reduces elevated LDL-C through inhibition of cholesterol synthesis in the liver and absorption in the intestine.

#### Bempedoic acid

Bempedoic acid is an adenosine triphosphate-citrate lyase (ACL) inhibitor that lowers LDL-C by inhibition of cholesterol synthesis in the liver. ACL is an enzyme upstream of 3-

hydroxy-3-methyl-glutaryl-coenzyme A (HMG-CoA) reductase in the cholesterol biosynthesis pathway. Bempedoic acid and its active metabolite, ESP15228, require coenzyme A (CoA) activation by very long-chain acyl-CoA synthetase 1 (ACSVL1) to ETC-1002-CoA and ESP15228-CoA, respectively. ACSVL1 is expressed primarily in the liver. Inhibition of ACL by ETC-1002-CoA results in decreased cholesterol synthesis in the liver and lowers LDL-C in blood via upregulation of low-density lipoprotein receptors.

### Ezetimibe

Ezetimibe reduces blood cholesterol by inhibiting the absorption of cholesterol by the small intestine. The molecular target of ezetimibe has been shown to be the sterol transporter, Niemann-Pick C1-Like 1 (NPC1L1), which is involved in the intestinal uptake of cholesterol and phytosterols. Ezetimibe localizes at the brush border of the small intestine and inhibits the absorption of cholesterol, leading to a decrease in the delivery of intestinal cholesterol to the liver. This causes a reduction of hepatic cholesterol stores and an increase in LDL receptors, resulting in clearance of cholesterol from the blood.

## **12.2 Pharmacodynamics**

Administration of bempedoic acid and ezetimibe in combination with other lipid modifying agents, decreases LDL-C, non-high density lipoprotein cholesterol (non-HDL-C), apolipoprotein B (apo B), and total cholesterol (TC) in patients with hyperlipidemia.

### Cardiac Electrophysiology

At a dose of 240 mg (1.3 times the approved recommended dose), bempedoic acid does not prolong the QT interval to any clinically relevant extent.

The effect of ezetimibe or NEXLIZET on QT interval has not been evaluated.

## **12.3 Pharmacokinetics**

### Absorption

#### *NEXLIZET*

The bioavailability of NEXLIZET tablets was similar relative to that from the individual tablets, coadministered. Maximum plasma concentration ( $C_{max}$ ) values for bempedoic acid and its active metabolite (ESP15228) were similar between formulations, but ezetimibe glucuronide and ezetimibe  $C_{max}$  values were approximately 22% and 13% lower, respectively, for NEXLIZET relative to the individual tablets, coadministered. Given a similar overall extent of ezetimibe glucuronide and ezetimibe exposure (as measured by AUC), a 22% lower  $C_{max}$  is unlikely to be clinically significant.

#### *Bempedoic acid*

Following single oral administration of NEXLIZET (180 mg of bempedoic acid and 10 mg of ezetimibe), mean ( $\pm$  SD)  $C_{max}$  and AUC of bempedoic acid were 12.6 ( $\pm$  2.80)  $\mu\text{g/mL}$  and 202 ( $\pm$  43.4)  $\mu\text{g}\cdot\text{hr/mL}$ , respectively; the median time to maximum concentration ( $T_{max}$ ) was 3.0 hours. Following multiple-dose administration of bempedoic acid monotherapy, the steady-state maximum plasma concentration ( $C_{max}$ ) and AUC at 180 mg/day were  $20.6 \pm 6.1$   $\mu\text{g/mL}$  and  $289.0 \pm 96.4$   $\mu\text{g}\cdot\text{h/mL}$ , respectively. Bempedoic acid steady-state pharmacokinetics were generally linear over a range of >60 mg to 220 mg (approximately 33% to 122% of the recommended dosage of 180 mg daily). There were no time-dependent changes in bempedoic acid pharmacokinetics following repeat

administration at the recommended dosage, and bempedoic acid steady-state was achieved after 7 days. The mean accumulation ratio was approximately 2.3-fold.

The steady-state  $C_{\max}$  and AUC of the active metabolite (ESP15228) of bempedoic acid were  $2.8 \pm 0.9 \mu\text{g/mL}$  and  $51.2 \pm 17.2 \mu\text{g}\cdot\text{h/mL}$ , respectively. ESP15228 likely made a minor contribution to the overall clinical activity of bempedoic acid based on systemic exposure, relative potency, and pharmacokinetic properties.

### *Ezetimibe*

After a single dose of NEXLIZET to fasted adults, mean  $\pm$  SD ezetimibe  $C_{\max}$  of  $3.56 \pm 1.90 \text{ ng/mL}$  were attained with a median  $T_{\max}$  of 5 hr. Ezetimibe-glucuronide mean  $C_{\max}$  values of  $107 \pm 46 \text{ ng/mL}$  were achieved with a median  $T_{\max}$  of 1 hr. For ezetimibe monotherapy, there was no substantial deviation from dose proportionality between 5 mg and 20 mg (0.5- to 2-fold the recommended dosage). The absolute bioavailability of ezetimibe cannot be determined, as the compound is virtually insoluble in aqueous media suitable for injection.

### Effect of Food

#### *NEXLIZET*

After the administration of NEXLIZET with a high-fat, high calorie breakfast in healthy subjects, the AUC for bempedoic acid and ezetimibe were comparable to the fasted state. Compared to the fasted state, the fed state resulted in 30% and 12% reductions in  $C_{\max}$  and 2-hour and 2.5-hour delays in median time to attain maximum concentration ( $T_{\max}$ ) of bempedoic acid and ezetimibe, respectively. For ezetimibe glucuronide, a 12% and 42% decrease in AUC and  $C_{\max}$ , respectively, were observed under fed relative to fasted conditions.

This effect of food is not considered to be clinically meaningful.

### Distribution

#### *Bempedoic acid*

The bempedoic acid apparent volume of distribution (V/F) was 18 L. Plasma protein binding of bempedoic acid, its glucuronide and its active metabolite, ESP15228, were 99.3%, 98.8% and 99.2%, respectively. Bempedoic acid does not partition into blood cells.

#### *Ezetimibe*

Ezetimibe and ezetimibe-glucuronide are highly bound (>90%) to human plasma proteins.

### Elimination

#### *Bempedoic acid*

The steady-state clearance (CL/F) of bempedoic acid was 11.2 mL/min after once-daily dosing; renal clearance of unchanged bempedoic acid represented less than 2% of total clearance. The mean  $\pm$  SD half-life for bempedoic acid in humans was  $21 \pm 11$  hours at steady-state.

#### *Ezetimibe*

Both ezetimibe and ezetimibe-glucuronide are eliminated from plasma with a half-life of



approximately 22 hours for both.

### Metabolism

#### *Bempedoic acid*

The primary route of elimination for bempedoic acid is through metabolism to the acyl glucuronide. Bempedoic acid is also reversibly converted to an active metabolite (ESP15228) based on aldo-keto reductase activity observed *in vitro* from human liver. Mean plasma AUC metabolite/parent drug ratio for ESP15228 following repeat-dose administration was 18% and remained constant over time. Both bempedoic acid and ESP15228 are converted to inactive glucuronide conjugates *in vitro* by UGT2B7. Bempedoic acid, ESP15228 and their respective conjugated forms were detected in plasma with bempedoic acid accounting for the majority (46%) of the AUC<sub>0-48h</sub> and its glucuronide being the next most prevalent (30%). ESP15228 and its glucuronide represented 10% and 11% of the plasma AUC<sub>0-48h</sub>, respectively.

#### *Ezetimibe*

Ezetimibe is primarily metabolized in the small intestine and liver via glucuronide conjugation with subsequent biliary and renal excretion. Minimal oxidative metabolism has been observed in all species evaluated.

In humans, ezetimibe is rapidly metabolized to ezetimibe-glucuronide. Ezetimibe and ezetimibe-glucuronide are the major drug-derived compounds detected in plasma, constituting approximately 10% to 20% and 80% to 90% of the total drug in plasma, respectively. Plasma concentration-time profiles exhibit multiple peaks, suggesting enterohepatic recycling.

### Excretion

#### *Bempedoic acid*

Following single oral administration of 240 mg of bempedoic acid (1.3 times the approved recommended dose), approximately 70% of the total dose (bempedoic acid and its metabolites) was recovered in urine, primarily as the acyl glucuronide conjugate of bempedoic acid, and approximately 30% was recovered in feces. Less than 5% of the administered dose was excreted as unchanged bempedoic acid in feces and urine combined.

#### *Ezetimibe*

Following oral administration of <sup>14</sup>C-ezetimibe (20 mg) to human subjects, total ezetimibe (ezetimibe + ezetimibe-glucuronide) accounted for approximately 93% of the total radioactivity in plasma. Approximately 78% and 11% of the administered radioactivity were recovered in the feces and urine, respectively, over a 10-day collection period. After 48 hours, there were no detectable levels of radioactivity in the plasma.

Ezetimibe was the major component in feces, and accounted for 69% of the administered dose, while ezetimibe-glucuronide was the major component in urine and accounted for 9% of the administered dose.

### Specific Populations

#### *Patients with Renal Impairment*

#### *Bempedoic acid*

Pharmacokinetics of bempedoic acid was evaluated in a single-dose pharmacokinetic study in subjects with varying degrees of renal function. The mean bempedoic acid AUC in subjects with mild renal impairment (n = 8) were 1.5-fold higher compared to those with normal renal function (n = 6). Relative to those with normal renal function, mean bempedoic acid AUCs were higher in patients with moderate (n = 5) or severe (n = 5) renal impairment by 2.3-fold and 2.4-fold, respectively.

A population pharmacokinetic analysis was performed on pooled data from all clinical trials (n = 2,261) to further evaluate the effects of renal function on the steady-state AUC of bempedoic acid. Compared to patients with normal renal function, the mean bempedoic acid exposures were higher in patients with mild or moderate renal impairment by 1.4-fold (90% CI: 1.3, 1.4) and 1.9-fold (90% CI: 1.7, 2.0), respectively. These differences were not clinically significant. Clinical studies of bempedoic acid did not include patients with severe renal impairment (eGFR <30 mL/min/1.73 m<sup>2</sup>) or patients with ESRD on dialysis [see *Use in Specific Populations* (8.6)].

#### *Ezetimibe*

After a single 10 mg dose of ezetimibe in patients with severe renal disease (n = 8; mean CrCl ≤ 30 mL/min/1.73 m<sup>2</sup>), the mean AUC for total ezetimibe, ezetimibe-glucuronide, and ezetimibe increased approximately 1.5-fold, compared to healthy subjects (n = 9). No dosage adjustment is necessary for the ezetimibe component. However, there is limited experience with bempedoic acid in patients with severe renal impairment [see *Use in Specific Populations* (8.6)].

#### *Patients with Hepatic Impairment*

NEXLIZET is not recommended in patients with moderate or severe hepatic impairment due to the unknown effects of the increased exposure to ezetimibe [see *Use in Specific Populations* (8.7)].

#### *Bempedoic acid*

The pharmacokinetics of bempedoic acid and its metabolite (ESP15228) was studied in patients with normal hepatic function or mild or moderate hepatic impairment (Child-Pugh A or B) following a single dose (n = 8/group). Compared to patients with normal hepatic function, the bempedoic acid mean C<sub>max</sub> and AUC were decreased by 11% and 22%, respectively, in patients with mild hepatic impairment and by 14% and 16%, respectively, in patients with moderate hepatic impairment. Compared to patients with normal hepatic function, the ESP15228 mean C<sub>max</sub> and AUC were decreased by 13% and 23%, respectively, in patients with mild hepatic impairment and by 24% and 36%, respectively, in patients with moderate hepatic impairment. This is not expected to result in lower efficacy.

Bempedoic acid was not studied in patients with severe hepatic impairment (Child-Pugh C).

#### *Ezetimibe*

After a single 10 mg dose of ezetimibe, the mean AUC for total ezetimibe increased approximately 1.7-fold in patients with mild hepatic impairment (Child-Pugh score 5 to 6), compared to healthy subjects. The mean AUC values for total ezetimibe and ezetimibe increased approximately 3- to 4-fold and 5- to 6-fold, respectively, in patients with moderate (Child-Pugh score 7 to 9) or severe hepatic impairment (Child-Pugh score 10 to 15). In a 14-day, multiple-dose study (10 mg daily) in patients with moderate hepatic

impairment, the mean AUC for total ezetimibe and ezetimibe increased approximately 4-fold on day 1 and day 14 compared to healthy subjects.

### Other Specific Populations

#### *Bempedoic acid*

The pharmacokinetics of bempedoic acid were not affected by age, gender, race, or weight.

#### *Ezetimibe*

*Geriatrics:* In a multiple-dose study with ezetimibe given 10 mg once daily for 10 days, plasma concentrations for total ezetimibe were about 2-fold higher in older ( $\geq 65$  years) healthy subjects compared to younger subjects [see *Use in Specific Populations* (8.5)].

*Gender:* In a multiple-dose study with ezetimibe given 10 mg once daily for 10 days, plasma concentrations for total ezetimibe were slightly higher (<20%) in females than in males.

*Race:* The pharmacokinetics of ezetimibe is not affected by race.

### Drug Interaction Studies

#### *Bempedoic acid*

#### *Cytochrome P450 Substrates*

*In vitro* metabolic interaction studies suggest that bempedoic acid, as well as its active metabolite and glucuronide forms are not metabolized by and do not interact with cytochrome P450 enzymes.

#### *Transporter-mediated Drug Interactions*

*In vitro* drug interaction studies suggest bempedoic acid, as well as its active metabolite and glucuronide form, are not substrates of commonly characterized drug transporters with the exception of bempedoic acid glucuronide, which is an OAT3 substrate. Bempedoic acid weakly inhibits OAT3 at high multiples of clinically relevant concentrations, and bempedoic acid and its glucuronide weakly inhibit OATP1B1, and OATP1B3 at clinically relevant concentrations. Bempedoic acid weakly inhibits OAT2 *in vitro*, which is likely the mechanism responsible for minor elevations in serum creatinine and uric acid [see *Adverse Reactions* (6.1)].

#### *Probenecid*

Administration of bempedoic acid 180 mg with steady-state probenecid resulted in a 1.7- and a 1.2-fold increase in bempedoic acid AUC and  $C_{max}$ , respectively. AUC and  $C_{max}$  for bempedoic acid active metabolite (ESP15228) were increased 1.9- and 1.5-fold, respectively. These elevations are not clinically meaningful and do not impact dosing recommendations.

#### *Statins*

The pharmacokinetic interactions between bempedoic acid (at systemic exposure relevant to the indicated CVD population) and simvastatin 20 mg, atorvastatin 10 mg, pravastatin 40 mg, and rosuvastatin 10 mg were evaluated in clinical trials.

*Simvastatin:* Administration of simvastatin 20 mg with 240 mg of bempedoic acid or 40

mg with 180 mg of bempedoic acid in healthy subjects at steady-state resulted in approximately 2-fold (91% for 20 mg and 96% for 40 mg) and 1.5-fold (54% for 20 mg and 52% for 40 mg) increases in simvastatin acid AUC and  $C_{max}$ , respectively [see *Drug Interactions* (7)].

Pravastatin: Administration of pravastatin 40 mg with steady-state bempedoic acid 240 mg in healthy subjects resulted in 99% (2-fold) and 104% (2-fold) increases in pravastatin acid AUC and  $C_{max}$ , respectively [see *Drug Interactions* (7)].

Atorvastatin and Rosuvastatin: Elevations of 1.7-fold in AUC of atorvastatin, and rosuvastatin and/or their major metabolites were observed, suggesting a weak interaction. These elevations were generally within the individual statin exposures and do not impact dosing recommendations.

#### *Warfarin*

*In vitro* studies indicate that bempedoic acid is not an inhibitor or inducer of CYP2C9. Because warfarin is primarily eliminated through CYP2C9, its pharmacokinetics is not expected to be altered by bempedoic acid.

#### *Other*

Bempedoic acid had no effect on the pharmacokinetics of metformin or the oral contraceptive Ortho-Novum 1/35.

#### Ezetimibe

Ezetimibe had no significant effect on a series of probe drugs (caffeine, dextromethorphan, tolbutamide, and IV midazolam) known to be metabolized by cytochrome P450 (1A2, 2D6, 2C8/9 and 3A4) in a "cocktail" study of twelve healthy adult males. This indicates that ezetimibe is neither an inhibitor nor an inducer of these cytochrome P450 isozymes, and it is unlikely that ezetimibe will affect the metabolism of drugs that are metabolized by these enzymes.

Cyclosporine: Administration of ezetimibe with cyclosporine (75–150 mg BID) resulted in a 2.4- and a 2.9-fold increase in total ezetimibe AUC and  $C_{max}$ , respectively [see *Drug Interactions* (7)].

Fibrates: Administration of ezetimibe with fenofibrate (200 mg QD for 14 days) resulted in a 1.48- and a 1.64-fold increase in total ezetimibe AUC and  $C_{max}$ , respectively. Administration with gemfibrozil (600 mg BID for 7 days) resulted in a 1.64- and 1.91-fold increase in total ezetimibe AUC and  $C_{max}$ , respectively [see *Drug Interactions* (7)].

Cholestyramine: Administration of ezetimibe with cholestyramine (4 g BID for 14 days) resulted in a 55% and a 4% decrease in total ezetimibe AUC and  $C_{max}$ , respectively [see *Drug Interactions* (7)].

No clinically meaningful pharmacokinetic interaction was observed following coadministration of ezetimibe with aluminum & magnesium hydroxide combination antacid, cimetidine, glipizide, lovastatin, pravastatin, atorvastatin, rosuvastatin, fluvastatin, simvastatin, digoxin, ethinyl estradiol/levonorgestrel, and warfarin.

## **13 NONCLINICAL TOXICOLOGY**

## 13.1 Carcinogenesis, Mutagenesis, Impairment of Fertility

### *Bempedoic acid*

Bempedoic acid was negative for mutagenicity in an *in vitro* Ames assay and negative for clastogenicity in the *in vitro* human lymphocyte chromosome aberration assay. Bempedoic acid was negative in both *in vivo* mouse micronucleus and *in vivo* rat bone marrow micronucleus/liver comet assay. In a 2-year rat carcinogenicity study, Wistar rats were given oral doses of bempedoic acid at 3, 10 and 30 mg/kg/day. An increased incidence of liver hepatocellular adenomas and hepatocellular adenomas combined with carcinomas, thyroid gland follicular cell adenoma and follicular cell adenomas combined with carcinomas, and pancreatic islet cell adenomas combined with carcinomas were observed in male rats at the dose of 30 mg/kg/day (exposure equivalent to the maximum recommended human dose (MRHD), based on AUC). In a 2-year mice carcinogenicity study, CD-1 mice were given oral doses of bempedoic acid at 25, 75 and 150 mg/kg/day. Bempedoic acid-related increases in the incidence of liver hepatocellular adenomas, hepatocellular carcinomas and hepatocellular adenomas combined with carcinomas in male mice were observed at 75 and 150 mg/kg/day (exposures equivalent to the MRHD). Observations of liver and thyroid tumors are consistent with PPAR alpha agonism in rodents. The human relevance of pancreatic islet cell tumor findings is unknown.

In fertility and early embryofetal development study in rats, bempedoic acid was given orally to male and female rats at 10, 30 and 60 mg/kg/day. Males were dosed for 28 days prior to mating and females were dosed 14 days prior to mating through gestation day 7. No adverse effects on fertility were observed in females in the absence of maternal toxicity. No effects were observed on male fertility outcomes, but decreases in sperm counts were observed at 60 mg/kg/day (9 times the MRHD).

### *Ezetimibe*

A 104-week dietary carcinogenicity study with ezetimibe was conducted in rats at doses up to 1,500 mg/kg/day (males) and 500 mg/kg/day (females) (approximately 20 times the human exposure at 10 mg daily based on AUC<sub>0-24hr</sub> for total ezetimibe). A 104-week dietary carcinogenicity study with ezetimibe was also conducted in mice at doses up to 500 mg/kg/day (>150 times the human exposure at 10 mg daily based on AUC<sub>0-24hr</sub> for total ezetimibe). There were no statistically significant increases in tumor incidences in drug-treated rats or mice.

No evidence of mutagenicity was observed *in vitro* in a microbial mutagenicity (Ames) test with *Salmonella typhimurium* and *Escherichia coli* with or without metabolic activation. No evidence of clastogenicity was observed *in vitro* in a chromosomal aberration assay in human peripheral blood lymphocytes with or without metabolic activation. In addition, there was no evidence of genotoxicity in the *in vivo* mouse micronucleus test.

In oral (gavage) fertility studies of ezetimibe conducted in rats, there was no evidence of reproductive toxicity at doses up to 1,000 mg/kg/day in male or female rats (approximately 7 times the human exposure at 10 mg daily based on AUC<sub>0-24hr</sub> for total ezetimibe).

## 14 CLINICAL STUDIES

## 14.1 Primary Hyperlipidemia Trials in Adults

The efficacy of NEXLIZET was investigated in a single, multi-center, randomized, double-blind, placebo-controlled, parallel group trial that enrolled 301 patients with HeFH, established CVD, or multiple risk factors for CVD on maximally tolerated statin therapy. The efficacy of NEXLIZET in patients with multiple risk factors for cardiovascular disease has not been established.

Trial 1 (NCT03337308) was a 4-arm, 12-week trial that assessed the efficacy of NEXLIZET in 301 patients randomized 2:2:2:1 to receive either oral NEXLIZET (180 mg of bempedoic acid and 10 mg of ezetimibe) (n = 86), bempedoic acid 180 mg (n = 88), ezetimibe 10 mg (n = 86), or placebo (n = 41) once daily as add-on to maximally tolerated statin therapy. Patients were stratified by cardiovascular risk and baseline statin intensity. Patients on simvastatin 40 mg per day or higher and patients taking non-statin lipid-lowering therapy (including fibrates, niacin, bile acid sequestrants, ezetimibe, and PCSK9 inhibitors) were excluded from the trial.

*Baseline Demographics and Disease Characteristics:* Overall, the mean age at baseline was 64 years (range: 30 to 87 years), 50% were 65 years of age and older, 50% were female, 81% were White, 17% were Black or African American, 1% were Asian, and 1% were other races; 12% identified as Hispanic or Latino ethnicity. Sixty-two percent (62%) of patients had clinical CVD and/or a diagnosis of HeFH. The mean baseline LDL-C was 149.7 mg/dL. At the time of randomization, 65% of patients were receiving statin therapy; and 35% were receiving high intensity statin therapy.

*Efficacy Results:* The primary efficacy outcome measure of the study was the percent change from baseline to Week 12 in LDL-C. The difference between NEXLIZET and placebo in mean percent change in LDL-C from baseline to Week 12 was -38% (95% CI: -47%, -30%; p <0.001). High-density lipoprotein (HDL) and triglycerides (TG) were examined as exploratory endpoints and were not included in the statistical hierarchy. The difference between NEXLIZET and placebo in mean percent change from baseline to Week 12 was -5% for HDL and median percent change from baseline to Week 12 was -11% for TG. The maximum LDL-C lowering effect was observed at Week 4. For additional results see Table 5.

**Table 5. Lipid Parameters in Adult Patients with HeFH, CVD or Risk Factors for CVD on Maximally Tolerated Statin Therapy (Mean % Change from Baseline to Week 12 in Trial 1)\***

	<b>LDL-C LS Mean</b>	<b>non-HDL- C LS Mean</b>	<b>apo B LS Mean</b>	<b>TC LS Mean</b>
NEXLIZET (180 mg/10 mg; n = 86 <sup>†</sup> )	-36	-32	-25	-26
Bempedoic acid (180 mg; n = 88 <sup>†</sup> )	-17	-14	-12	-12
Ezetimibe (10 mg; n = 86 <sup>†</sup> )	-23	-20	-15	-16
Placebo (n = 41 <sup>†</sup> )	2	2	6	1

Mean Difference of NEXLIZET versus Placebo (95% CI)	-38 (-47, -30)	-34 (-44, -23)	-30 (-40, -20)	-27 (-35, -19)
---	----------------	----------------	----------------	----------------

apo B = apolipoprotein B; HDL-C = high-density lipoprotein cholesterol; LDL-C = low-density lipoprotein cholesterol; LS = least squares; SE = standard error; TC = total cholesterol.

Background statin: atorvastatin, lovastatin, pitavastatin, pravastatin, rosuvastatin, simvastatin.

\* a. 3.5% of subjects on NEXLIZET, 6.8% of subjects on bempedoic acid, 7% of subjects on ezetimibe and 2.4% of subjects on placebo had missing LDL-C data at Week 12. Percent change from baseline was analyzed using analysis of covariance (ANCOVA), with treatment and randomization strata (high intensity statin versus other and CVD and/or HeFH versus multiple CV risk factors) as factors and baseline lipid parameter as a covariate. Missing data for LDL-C, non-HDL-C, TC and apo B were imputed through multiple imputation using a pattern mixture model (PMM) account for treatment adherence.

† Number of randomized subjects at baseline

Examination of age, sex, and race subgroups did not identify differences in response to NEXLIZET among these subgroups in any of the trials.

### Bempedoic Acid

#### *Primary Hyperlipidemia*

In the two primary hyperlipidemia (52-week) trials (Trials 2 and 3) that included 3,009 adult patients with HeFH or established CVD on maximally tolerated statin therapy, the difference between bempedoic acid and placebo in mean percent change in LDL-C from baseline to Week 12 was -17% to -18%. Bempedoic acid also significantly lowered non-HDL-C (-13%), apo B (-12% to -13%), and TC (-11%) compared with placebo.

### Ezetimibe

*Ezetimibe Added to On-going Statin Therapy:* In a multicenter, double-blind, placebo-controlled, 8-week trial, 769 patients (age range 22 to 85 years, 42% were females; 90% were White, 6% were Black or African American, 1% were Asian, and 3% were other races; 2% identified as Hispanic or Latino ethnicity) with primary hyperlipidemia, known coronary heart disease or multiple cardiovascular risk factors who were already receiving statin monotherapy, but who had not met their NCEP ATP II target LDL-C goal, were randomized to receive either ezetimibe or placebo in addition to their on-going statin therapy.

Ezetimibe, added to on-going statin therapy, significantly lowered TC (-17%), LDL-C (-25%), apo B (-19%), and non-HDL-C (-23%) relative to baseline and compared with a statin administered alone. LDL-C reductions induced by ezetimibe were generally consistent across all statins.

*Ezetimibe Initiated Concurrently with a Statin:* In four, multicenter, double-blind, placebo-controlled, 12-week trials, in 2,382 patients (age range 18 to 87 years, 57% were female; 88% were White, 5% were Black or African American, 2% were Asian, and 5% were other races mostly identified as Hispanic or Latino ethnicity) with hyperlipidemia, ezetimibe or placebo was orally administered alone or with various doses of atorvastatin, simvastatin, pravastatin, or lovastatin. When all patients receiving ezetimibe with a statin were compared to all those receiving the corresponding statin alone, ezetimibe

significantly lowered LDL-C (ezetimibe + all atorvastatin doses [-56%] versus all atorvastatin doses alone [-44%]; ezetimibe + all simvastatin doses [-51%] versus all simvastatin doses alone [-36%]; ezetimibe + all pravastatin doses [-39%] versus all pravastatin doses alone [-25%]; ezetimibe + all lovastatin doses [-40%] versus all lovastatin doses alone [-25%]). LDL-C reductions induced by ezetimibe were generally consistent across all statins.

## **14.2 Cardiovascular Outcomes Trial in Adults With CVD or at High Risk for CVD**

Trial 4 (NCT02993406) was a randomized, double-blind, placebo-controlled, event-driven trial in 13,970 adult patients with established CVD (70%) or at high risk for a CVD event but without CVD (30%) who were not receiving recommended statin dosages. Patients with established CVD had documented history of coronary artery disease, symptomatic peripheral arterial disease, and/or cerebrovascular atherosclerotic disease. Patients without established CVD were considered at high risk for CVD based on meeting at least one of the following criteria:

- (1) Diabetes mellitus (type 1 or type 2) in females over 65 years of age or males over 60 years of age;
- (2) A Reynolds Risk score > 30% or a SCORE Risk score > 7.5% over 10 years. Reynolds risk score and SCORE risk score evaluate a 10-year risk of having a cardiovascular (CV) event. The Reynolds risk score is based on the following risk factors: sex, age, smoking status, systolic blood pressure, total cholesterol, HDL cholesterol, high sensitivity C-reactive protein (hsCRP), and familial history of CVD events. LDL-C is an additional risk factor considered in SCORE risk score; or
- (3) A coronary artery calcium score >400 Agatston units at any time in the past.

Patients were randomized 1:1 to receive either oral bempedoic acid 180 mg per day (n = 6,992) or placebo (n = 6,978), alone or as an add on to other background lipid-lowering therapies. Background therapy could include less than low-intensity statin dosages. Overall, 95.3% of adult patients were followed until the end of the trial or death. The median follow-up duration was 3.4 years.

### Baseline Demographics and Disease Characteristics

At baseline, the mean age was 66 years (range 21 to 92 years), 59% were 65 years of age and older, 15% were 75 years of age and older, 48% were female, 91% were White, 2% were Black or African American, 4% were American Indian or Alaska Native, 2% were Asian, and 1% were other races; 17% identified as Hispanic or Latino ethnicity.

Selected additional baseline characteristics included hypertension (85%), diabetes mellitus (46%), current tobacco user (22%), eGFR < 60 mL/min per 1.73 m<sup>2</sup> (21%), and a mean body mass index of 30 kg/m<sup>2</sup>. The mean baseline LDL-C was 139 mg/dL. At baseline, 38% of patients were taking at least one lipid modifying therapy including less than low-intensity statin dosages (23%), ezetimibe (12%), or fibrates (5%). Most patients were taking at least one other CV medication including acetylsalicylic acid (57%), selective beta blockers (52%), angiotensin converting enzyme inhibitors (40%), or angiotensin receptor blockers (32%).

### Efficacy Results

The risk for the primary composite endpoint (MACE-4: time to first occurrence of CV



death, nonfatal myocardial infarction, nonfatal stroke, or coronary revascularization;  $p=0.0037$ ) and the key secondary composite endpoint (MACE-3: time to first occurrence of CV death, nonfatal myocardial infarction, or nonfatal stroke;  $p=0.0058$ ) was significantly reduced in bempedoic acid-treated patients compared to the placebo-treated patients (Table 6). The difference between bempedoic acid and placebo in mean percent change in LDL-C from baseline to Month 6 was -20% (95% CI: -21%, -19%).

**Table 6: Major Cardiovascular Events in Adults with Established CVD or at High Risk for CVD (Trial 4)**

	<b>Bempedoic acid N=6,992</b>	<b>Placebo N=6,978</b>	<b>Bempedoic acid vs. Placebo</b>
<b>Endpoint</b>	<b>n (%)</b>	<b>n (%)</b>	<b>Hazard Ratio (95% CI)</b>
<b>Primary Composite Endpoint</b>			
Cardiovascular death, non-fatal myocardial infarction, non-fatal stroke, coronary revascularization (MACE-4)	819 (11.7)	927 (13.3)	0.87 (0.79, 0.96)
<b>Key Secondary Endpoint</b>			
Cardiovascular death, non-fatal myocardial infarction, non-fatal stroke (MACE-3)	575 (8.2)	663 (9.5)	0.85 (0.76, 0.96)
<b>Components of Primary Composite Endpoint</b>			
Non-fatal myocardial infarction	236 (3.4)	317 (4.5)	0.73 (0.62, 0.87)
Coronary revascularization	435 (6.2)	529 (7.6)	0.81 (0.72, 0.92)
Non-fatal stroke	119 (1.7)	144 (2.1)	0.82 (0.64, 1.05)
Cardiovascular death	269 (3.8)	257 (3.7)	1.04 (0.88, 1.24)

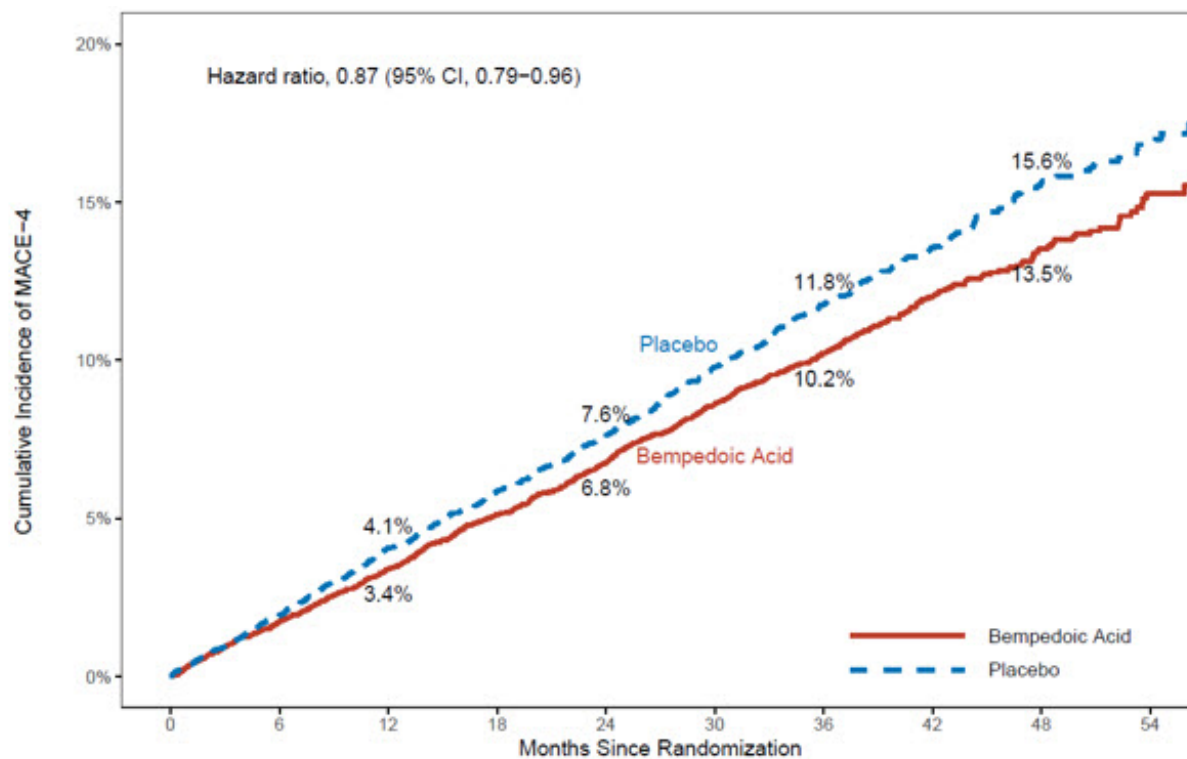
CI = confidence interval; MACE = major adverse cardiac event.

<sup>a</sup>Hazard ratio and corresponding 95% CI were based on a Cox proportional hazard model fitting treatment as explanatory variable.

This table also presents the time to first occurrence for each of the components of MACE; patients may have been included in more than one category.

The Kaplan-Meier estimates of the cumulative incidence of the MACE-4 and MACE-3 endpoints are shown in Figure 1 and 2 below.

**Figure 1: Cumulative Incidence of Primary Composite Endpoint (MACE-4) Over 4.5 Years in Adults with Established CVD or at High Risk for CVD (Trial 4)**

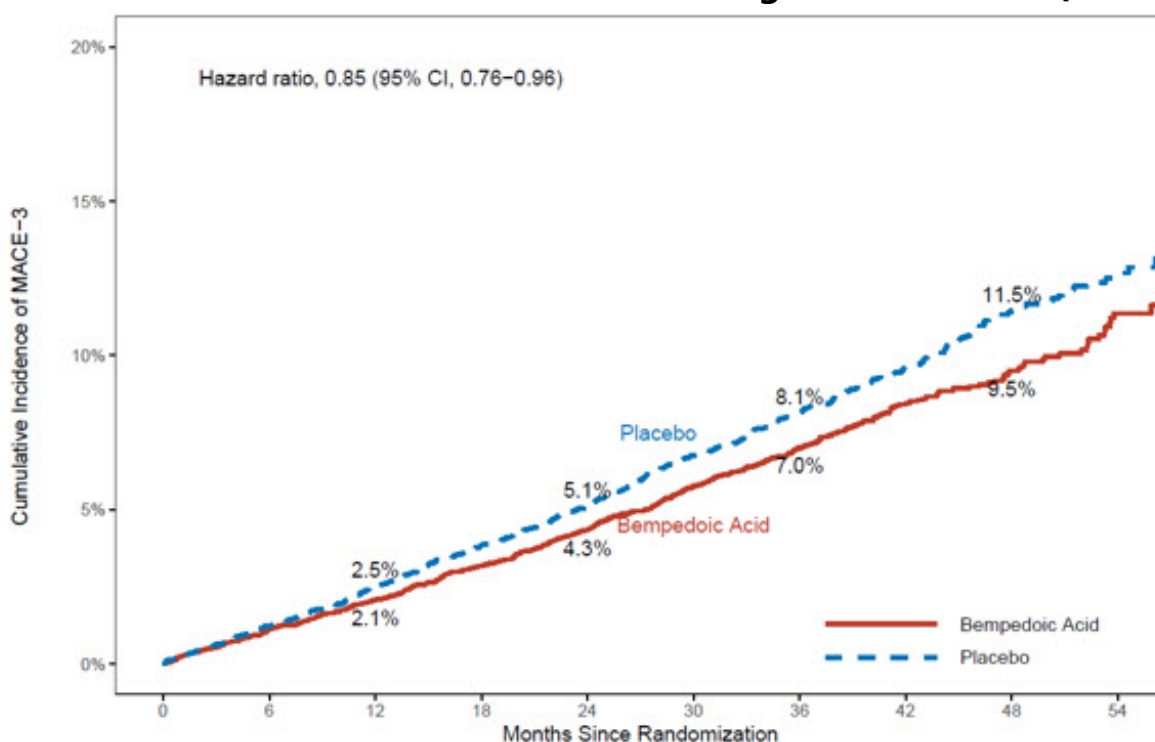


No. at Risk										
Bempedoic Acid	6992	6816	6652	6472	6291	6105	5239	2594	1236	553
Placebo	6978	6779	6573	6401	6205	5993	5087	2513	1204	513

MACE = major adverse cardiac event

Note: MACE-4 was defined as the time to first occurrence of the composite endpoint of CV death, nonfatal MI, nonfatal stroke, or coronary revascularization.

**Figure 2: Cumulative Incidence of Composite Endpoint (MACE-3) Over 4.5 Years in Adults with Established CVD or at High Risk for CVD (Trial 4)**



No. at Risk										
Bempedoic Acid	6992	6859	6743	6604	6456	6297	5435	2717	1311	588
Placebo	6978	6828	6677	6536	6368	6191	5304	2638	1276	554

MACE = major adverse cardiac event

MACE-3 was defined as time to first occurrence of the composite endpoint of CV death, nonfatal MI, or nonfatal stroke.

## 16 HOW SUPPLIED/STORAGE AND HANDLING

### How Supplied

NEXLIZET tablets are supplied as follows:

<b>Tablet Strength</b>	<b>Description</b>	<b>Package Configuration</b>	<b>NDC No.</b>
180 mg of bempedoic acid and 10 mg of ezetimibe	blue, oval shaped, debossed with "818" on one side and "ESP" on the other side	Bottle of 30 tablets with child-resistant cap	72426-818-03
		Bottle of 90 tablets with child-resistant cap	72426-818-09

### Storage and Handling

Store at 68°F to 77°F (20°C to 25°C); excursions permitted to 59°F to 86°F (15°C to 30°C) [see *USP Controlled Room Temperature*]. Store and dispense in the original package protected from extreme heat and humidity. Do not discard desiccant.

## 17 PATIENT COUNSELING INFORMATION

Advise patients to read the FDA-approved patient labeling (Patient Information).

### Risk of Hyperuricemia

Advise patients of the risk of elevated serum uric acid levels, including development of gout. Inform patients that serum uric acid levels may be monitored during treatment with NEXLIZET. Patients with signs or symptoms of hyperuricemia should contact their healthcare provider if symptoms occur [see *Warnings and Precautions (5.1)*].

### Risk of Tendon Rupture

Inform patients of the risk of tendon rupture. Advise patients to rest at the first sign of tendinitis or tendon rupture and to immediately contact their healthcare provider if tendinitis or tendon rupture symptoms occur [see *Warnings and Precautions (5.2)*].

### Risk of Myopathy with Concomitant Use of Simvastatin or Pravastatin

Advise patients to notify their healthcare provider(s) if they are taking, or plan to take simvastatin or pravastatin. The risk of myopathy occurring with the use of simvastatin or pravastatin may be increased when taken with NEXLIZET [see *Drug Interactions (7)*].

### Pregnancy

Advise pregnant women of the potential risk to a fetus based on NEXLIZET's mechanism of action. Advise females to inform their healthcare provider of a known or suspected pregnancy. Advise patients that there is a pregnancy safety study that monitors

pregnancy outcomes in patients exposed to NEXLIZET during pregnancy. Encourage these patients to report their pregnancy to Esperion at 1-833-377-7633 [see Use in Specific Populations (8.1)].

**Manufactured for:**

Esperion Therapeutics, Inc.  
3891 Ranchero Drive, Suite 150  
Ann Arbor, MI 48108

NEXLIZET® (bempedoic acid and ezetimibe)  
© 2024 Esperion Therapeutics, Inc.

**PATIENT INFORMATION**  
**NEXLIZET® (NEX-lee-zet)**  
**(bempedoic acid and ezetimibe)**  
**tablets, for oral use**

**What is NEXLIZET?**

NEXLIZET is a prescription medicine that contains 2 cholesterol-lowering medicines, bempedoic acid and ezetimibe.

- NEXLIZET is used along with diet, with or without other cholesterol-lowering medicines, to reduce low-density lipoprotein (LDL, or bad cholesterol) in adults with high blood cholesterol levels called primary hyperlipidemia, including a type of high cholesterol called heterozygous familial hypercholesterolemia (HeFH).
- Bempedoic acid when used as a component of NEXLIZET is used:
  - to lower the risk of heart attack and heart procedures like stent placement or bypass surgery, in adults who are unable to take recommended statin treatment (a cholesterol-lowering medicine), or are not taking a statin, who:
    - have known heart disease, or
    - are at high risk for heart disease but without known heart disease.

It is not known if NEXLIZET is safe and effective in children.

**Do not** take NEXLIZET if you are allergic to ezetimibe, bempedoic acid, or any of the ingredients in NEXLIZET. See the end of this leaflet for a complete list of ingredients in NEXLIZET. Stop taking NEXLIZET, call your healthcare provider or go to the nearest hospital emergency room right away if you have any signs or symptoms of an allergic reaction including:

- swelling of your face, lips, mouth or tongue
- wheezing
- severe itching
- fast heart beat or pounding in your chest
- trouble breathing
- skin rashes, redness, or swelling
- dizziness or fainting

**Before you start taking NEXLIZET, tell your healthcare provider about all your medical conditions, including if you:**

- have or had gout.
- have or had tendon problems.
- are pregnant or think you may be pregnant. Tell your healthcare provider right away if you become pregnant while taking NEXLIZET. You and your healthcare provider will decide if you should take NEXLIZET while you are pregnant. If you are pregnant during NEXLIZET treatment, you are encouraged to call Esperion at 1-833-377-7633 to share information about the health of you and your baby.

- are breastfeeding or plan to breastfeed. It is not known if NEXLIZET passes into your breast milk. You and your healthcare provider should decide if you will take NEXLIZET or breastfeed. You should not do both.
- have severe kidney problems.
- have moderate or severe liver problems.

NEXLIZET may affect the way other medicines work, and other medicines may affect how NEXLIZET works. **Tell your healthcare provider about all the medicines you take, including prescription and over-the-counter medicines, vitamins, and herbal supplements.**

Especially tell your healthcare provider if you take or plan to take:

- simvastatin or pravastatin (other cholesterol-lowering medicines). Taking simvastatin or pravastatin with NEXLIZET may increase your risk of developing muscle pain or weakness (myopathy).
- cyclosporine (often used in organ transplant patients)
- fibrates (used to lower cholesterol)
- cholestyramine (used to lower cholesterol)

Know the medicines you take. Keep a list of them to show your healthcare provider and pharmacist when you get a new medicine.

### **How should I take NEXLIZET?**

- Take NEXLIZET exactly as your healthcare provider tells you to take it. Check with your healthcare provider or pharmacist if you are not sure.
- Take 1 NEXLIZET tablet by mouth each day.
- Swallow the NEXLIZET tablet whole. **Do not** cut, chew, or crush the tablet.
- You may take NEXLIZET with or without food.
- If you miss a dose, take it as soon as you remember. If you do not remember until it is time for your next dose, skip the missed dose and go back to your regular schedule. Do not take 2 doses of NEXLIZET at the same time.
- If you take a medicine that lowers cholesterol by binding bile acids, such as colestevlam or cholestyramine, take NEXLIZET at least 2 hours before or 4 hours after you take bile acid binding medicines. Ask your healthcare provider if you are not sure if you take these medicines.
- Your healthcare provider may do blood tests to check your LDL-C levels between 8 to 12 weeks after starting treatment with NEXLIZET.
- In case of an overdose, get medical help or contact a live Poison Center expert right away at 1-800-222-1222. Advice is also available online at [poisonhelp.org](http://poisonhelp.org).

### **What are possible side effects of NEXLIZET?**

**NEXLIZET may cause serious side effects, including:**

- **increased levels of uric acid in your blood (hyperuricemia).** This can happen within 4 weeks of you starting NEXLIZET and continue throughout your treatment. Your healthcare provider may monitor your blood uric acid levels while you are taking NEXLIZET. High levels of blood uric acid may lead to gout. Call your healthcare provider if you have the following symptoms of hyperuricemia and gout:
  - severe foot pain especially in the toe joint
  - warm joints
  - swelling
  - tender joints
  - joint redness

- **tendon rupture or injury. Tendon problems can happen in people who take bempedoic acid, one of the medicines in NEXLIZET.** Tendons are tough cords of tissue that connect muscles to bones. Symptoms of tendon problems may include pain, swelling, tears, and inflammation of tendons, most commonly with the rotator cuff (the shoulder), the biceps tendon (upper arm), and Achilles tendon at the back of the ankle. This can also happen with other tendons. Tendon ruptures can happen within weeks or months of starting NEXLIZET.

- **The risk of getting tendon problems while you take NEXLIZET is higher if you:**

- are over 60 years of age
- are taking antibiotics (fluoroquinolones)
- have had tendon problems
- are taking steroids (corticosteroids)
- have renal failure

- **Stop taking NEXLIZET immediately and get medical help right away if you get any of the following signs or symptoms of a tendon rupture:**

- hear or feel a snap or pop in a tendon area
- bruising right after an injury in a tendon area
- unable to move the affected area or put weight on the affected area

Avoid exercise and using the affected area.

**The most common side effects of NEXLIZET in people with primary hyperlipidemia include:**

- symptoms of the common cold, flu, or flu-like symptoms
- muscle spasms
- back pain
- stomach pain
- bronchitis
- pain in shoulder, legs, or arms
- anemia
- increased liver enzymes
- diarrhea
- joint pain
- swelling of sinuses (sinusitis)
- fatigue

**The most common side effects of bempedoic acid in people with heart problems include:**

- kidney problems
- anemia
- increased liver enzymes
- muscle spasms
- gallstones

Tell your healthcare provider if you have any side effect that bothers you or that does not go away.

These are not all the possible side effects of NEXLIZET. Ask your healthcare provider or pharmacist for more information.

**Call your doctor for medical advice about side effects. You may report side effects to FDA at 1-800-FDA-1088.**

**How should I store NEXLIZET?**

- Store NEXLIZET in the original package at room temperature between 68°F to 77°F (20°C to 25°C).
- Protect from heat and moisture.
- **Do not** throw away the packet that helps to keep your medicine dry (desiccant).
- NEXLIZET comes in a bottle with a child-resistant cap.

**Keep NEXLIZET and all medicines out of the reach of children.**

**General information about the safe and effective use of NEXLIZET.**

Medicines are sometimes prescribed for purposes other than those listed in a Patient Information leaflet. **Do not** use NEXLIZET for a condition for which it was not prescribed. **Do not** give NEXLIZET to other people, even if they have the same symptoms that you have. It may harm them.

You can ask your pharmacist or healthcare provider for information about NEXLIZET that is written for healthcare professionals.

**What are the ingredients in NEXLIZET?**

- **active ingredients:** bempedoic acid and ezetimibe
- **inactive ingredients:** colloidal silicon dioxide, hydroxy propyl cellulose, lactose monohydrate, magnesium stearate, microcrystalline cellulose, povidone K30, sodium lauryl sulfate, sodium starch glycolate
- **tablet coating:** FD&C Blue #1/Brilliant Blue FCF Aluminum Lake, FD&C Blue #2/Indigo Carmine Aluminum Lake, glyceryl monocaprylocaprate, partially hydrolyzed polyvinyl alcohol, sodium lauryl sulfate, talc, and titanium dioxide

Manufactured for:

Esperion Therapeutics, Inc.

3891 Ranchero Drive, Suite 150

Ann Arbor, MI 48108

© 2024 Esperion Therapeutics, Inc.

This Patient Information has been approved by  
the U.S. Food and Drug Administration

Revised: 03/2024

**PRINCIPAL DISPLAY PANEL - 180 mg/10 mg Tablet Bottle Label**

NDC 72426-818-03

Rx only

NEXLIZET®

(bempedoic acid

and ezetimibe) tablets

Contains

30 Tablets

180 mg/10 mg

**Storage:** Store at 20°C to 25°C (68°F to 77°F); excursions permitted to 15°C to 30°C (59°F to 86°F) [see USP Controlled Room Temperature]. Store in the original package. Protect from extreme heat and humidity. Do not discard desiccant.

**Dosage and Administration:** See accompanying Package Insert for Full Prescribing Information. Each tablet contains 180 mg bempedoic acid and 10 mg ezetimibe.

Made in India.  
Manufactured for: Esperion Therapeutics, Inc.  
Ann Arbor, MI 48108. **ESPERION**



NDC 72426-818-03

Rx only

**NEXLIZET**  
(bempedoic acid  
and ezetimibe) tablets

Contains  
30 Tablets

180 mg/10 mg

EOR26LQ24

## NEXLIZET

bempedoic acid and ezetimibe tablet, film coated

### Product Information

<b>Product Type</b>	HUMAN PRESCRIPTION DRUG	<b>Item Code (Source)</b>	NDC:72426-818
<b>Route of Administration</b>	ORAL		

### Active Ingredient/Active Moiety

Ingredient Name	Basis of Strength	Strength
<b>BEMPEDOIC ACID</b> (UNII: 1EJ6Z6Q368) (BEMPEDOIC ACID - UNII:1EJ6Z6Q368)	BEMPEDOIC ACID	180 mg
<b>EZETIMIBE</b> (UNII: EOR26LQQ24) (EZ ETIMIBE - UNII:EOR26LQQ24)	EZ ETIMIBE	10 mg

### Inactive Ingredients

Ingredient Name	Strength
<b>LACTOSE MONOHYDRATE</b> (UNII: EWQ57Q8I5X)	
<b>MICROCRYSTALLINE CELLULOSE 102</b> (UNII: PNR0YF693Y)	
<b>HYDROXYPROPYL CELLULOSE, UNSPECIFIED</b> (UNII: 9XZ8H6N6OH)	
<b>SILICON DIOXIDE</b> (UNII: ETJ7Z6XBU4)	
<b>SODIUM STARCH GLYCOLATE TYPE A POTATO</b> (UNII: 5856J3G2A2)	
<b>MAGNESIUM STEARATE</b> (UNII: 70097M6I30)	
<b>POVIDONE K30</b> (UNII: U725QWY32X)	
<b>SODIUM LAURYL SULFATE</b> (UNII: 368GB5141J)	
<b>POLYVINYL ALCOHOL, UNSPECIFIED</b> (UNII: 532B59J990)	
<b>TITANIUM DIOXIDE</b> (UNII: 15FIX9V2JP)	
<b>GLYCERYL MONOCAPRYLOCAPRATE</b> (UNII: G7515SW10N)	
<b>FD&amp;C BLUE NO. 1 ALUMINUM LAKE</b> (UNII: J9EQA3S2JM)	
<b>FD&amp;C BLUE NO. 2 ALUMINUM LAKE</b> (UNII: 4AQJ3LG584)	
<b>TALC</b> (UNII: 7SEV7J4R1U)	



## Product Characteristics

<b>Color</b>	BLUE	<b>Score</b>	no score
<b>Shape</b>	OVAL	<b>Size</b>	15mm
<b>Flavor</b>		<b>Imprint Code</b>	818;ESP
<b>Contains</b>			

## Packaging

#	Item Code	Package Description	Marketing Start Date	Marketing End Date
1	NDC:72426-818-03	30 in 1 BOTTLE, PLASTIC; Type 0: Not a Combination Product	03/09/2020	
2	NDC:72426-818-09	90 in 1 BOTTLE, PLASTIC; Type 0: Not a Combination Product	03/09/2020	
3	NDC:72426-818-99	7 in 1 BLISTER PACK; Type 0: Not a Combination Product	03/09/2020	

## Marketing Information

Marketing Category	Application Number or Monograph Citation	Marketing Start Date	Marketing End Date
NDA	NDA211617	03/09/2020	

**Labeler** - Esperion Therapeutics, Inc. (029516312)

## Establishment

Name	Address	ID/FEI	Business Operations
Piramal Enterprises Limited Healthcare		079763718	ANALYSIS(72426-818) , MANUFACTURE(72426-818) , PACK(72426-818)

Revised: 3/2024

Esperion Therapeutics, Inc.