

# LEVOTHYROXINE SODIUM- levothyroxine sodium tablet

## American Health Packaging

-----

### HIGHLIGHTS OF PRESCRIBING INFORMATION

These highlights do not include all the information needed to use LEVOTHYROXINE SODIUM TABLETS safely and effectively. See full prescribing information for LEVOTHYROXINE SODIUM TABLETS.

LEVOTHYROXINE SODIUM tablets, for oral use

Initial U.S. Approval: 2002

#### **WARNING: NOT FOR TREATMENT OF OBESITY OR FOR WEIGHT LOSS**

*See full prescribing information for complete boxed warning*

- **Thyroid hormones, including levothyroxine sodium tablet, should not be used for the treatment of obesity or for weight loss.**
- **Doses beyond the range of daily hormonal requirements may produce serious or even life-threatening manifestations of toxicity (6, 10).**

#### **RECENT MAJOR CHANGES**

Dosage and Administration, Important Considerations for Dosing (2.2) 2/2024  
Dosage and Administration, Monitoring TSH and/or Thyroxine (T4) Levels (2.4) 2/2024

#### **INDICATIONS AND USAGE**

Levothyroxine sodium tablet is a L-thyroxine (T4) indicated in adult and pediatric patients, including neonates, for:

- Hypothyroidism: As replacement therapy in primary (thyroidal), secondary (pituitary), and tertiary (hypothalamic) congenital or acquired hypothyroidism. (1)
- Pituitary Thyrotropin (Thyroid-Stimulating Hormone, TSH) Suppression: As an adjunct to surgery and radioiodine therapy in the management of thyrotropin-dependent well-differentiated thyroid cancer. (1)

#### Limitations of Use

- Not indicated for suppression of benign thyroid nodules and nontoxic diffuse goiter in iodine-sufficient patients.
- Not indicated for treatment of hypothyroidism during the recovery phase of subacute thyroiditis.

#### **DOSAGE AND ADMINISTRATION**

- Administer once daily, preferably on an empty stomach, one-half to one hour before breakfast. (2.1)
- Administer at least 4 hours before or after drugs that are known to interfere with absorption. (2.1)
- Evaluate the need for dose adjustments when regularly administering within one hour of certain foods that may affect absorption. (2.1)
- Advise patients to stop biotin and biotin-containing supplements at least 2 days before assessing TSH and/or T4 levels. (2.2)
- Starting dose depends on a variety of factors, including age, body weight, cardiovascular status, and concomitant medications. Peak therapeutic effect may not be attained for 4 to 6 weeks. (2.2)
- See full prescribing information for dosing in specific patient populations. (2.3)
- Adequacy of therapy determined with periodic monitoring of TSH and/or T4 as well as clinical status. (2.4)

#### **DOSAGE FORMS AND STRENGTHS**

Tablets: 25, 50, 75, 88, 100, 112, 125, 137, 150, 175, 200, and 300 mcg (3)

#### **CONTRAINDICATIONS**

- Uncorrected adrenal insufficiency. (4)

#### **WARNINGS AND PRECAUTIONS**

- *Serious risks related to overtreatment or undertreatment with levothyroxine sodium tablet:* Titrate the dose of levothyroxine sodium tablet carefully and monitor response to titration. (5.1).
- *Cardiac adverse reactions in the elderly and in patients with underlying cardiovascular disease:* Initiate levothyroxine sodium tablet at less than the full replacement dose because of the increased risk of cardiac adverse reactions, including atrial fibrillation. (2.3, 5.2, 8.5)

- *Myxedema coma*: Do not use oral thyroid hormone drug products to treat myxedema coma. (5.3)
- *Acute adrenal crisis in patients with concomitant adrenal insufficiency*: Treat with replacement glucocorticoids prior to initiation of levothyroxine sodium tablet treatment. (5.4)
- *Worsening of diabetic control*: Therapy in patients with diabetes mellitus may worsen glycemic control and result in increased antidiabetic agent or insulin requirements. Carefully monitor glycemic control after starting, changing, or discontinuing thyroid hormone therapy. (5.5)
- *Decreased bone mineral density associated with thyroid hormone over-replacement*: Over-replacement can increase bone resorption and decrease bone mineral density. Give the lowest effective dose. (5.6)

#### ADVERSE REACTIONS

Adverse reactions associated with levothyroxine sodium tablets therapy are primarily those of hyperthyroidism due to therapeutic overdosage: arrhythmias, myocardial infarction, dyspnea, muscle spasm, headache, nervousness, irritability, insomnia, tremors, muscle weakness, increased appetite, weight loss, diarrhea, heat intolerance, menstrual irregularities, and skin rash. (6)

**To report SUSPECTED ADVERSE REACTIONS, contact Lupin Pharmaceuticals, Inc. at 1-800-399-2561 or FDA at 1-800-FDA-1088 or [www.fda.gov/medwatch](http://www.fda.gov/medwatch).**

#### DRUG INTERACTIONS

See full prescribing information for drugs that affect thyroid hormone pharmacokinetics and metabolism (e.g., absorption, synthesis, secretion, catabolism, protein binding, and target tissue response) and may alter the therapeutic response to levothyroxine sodium tablets. (7)

#### USE IN SPECIFIC POPULATIONS

Pregnancy may require the use of higher doses of levothyroxine sodium tablets. (2.3, 8.1)

**See 17 for PATIENT COUNSELING INFORMATION.**

**Revised: 3/2024**

## FULL PRESCRIBING INFORMATION: CONTENTS\*

### WARNING: NOT FOR TREATMENT OF OBESITY OR FOR WEIGHT LOSS

#### 1 INDICATIONS AND USAGE

#### 2 DOSAGE AND ADMINISTRATION

- 2.1 Important Administration Instructions
- 2.2 Important Considerations for Dosing
- 2.3 Recommended Dosage and Titration
- 2.4 Monitoring TSH and/or Thyroxine (T4) Levels

#### 3 DOSAGE FORMS AND STRENGTHS

#### 4 CONTRAINDICATIONS

#### 5 WARNINGS AND PRECAUTIONS

- 5.1 Serious Risks Related to Overtreatment or Undertreatment with Levothyroxine sodium tablets
- 5.2 Cardiac Adverse Reactions in the Elderly and in Patients with Underlying Cardiovascular Disease
- 5.3 Myxedema Coma
- 5.4 Acute Adrenal Crisis in Patients with Concomitant Adrenal Insufficiency
- 5.5 Worsening of Diabetic Control
- 5.6 Decreased Bone Mineral Density Associated with Thyroid Hormone Over-Replacement

#### 6 ADVERSE REACTIONS

#### 7 DRUG INTERACTIONS

- 7.1 Drugs Known to Affect Thyroid Hormone Pharmacokinetics
- 7.2 Antidiabetic Therapy
- 7.3 Oral Anticoagulants

- 7.4 Digitalis Glycosides
- 7.5 Antidepressant Therapy
- 7.6 Ketamine
- 7.7 Sympathomimetics
- 7.8 Tyrosine-Kinase Inhibitors
- 7.9 Drug-Food Interactions
- 7.10 Drug-Laboratory Test Interactions

## **8 USE IN SPECIFIC POPULATIONS**

- 8.1 Pregnancy
- 8.2 Lactation
- 8.4 Pediatric Use
- 8.5 Geriatric Use

## **10 OVERDOSAGE**

## **11 DESCRIPTION**

## **12 CLINICAL PHARMACOLOGY**

- 12.1 Mechanism of Action
- 12.2 Pharmacodynamics
- 12.3 Pharmacokinetics

## **13 NONCLINICAL TOXICOLOGY**

- 13.1 Carcinogenesis, Mutagenesis, Impairment of Fertility

## **16 HOW SUPPLIED/STORAGE AND HANDLING**

## **17 PATIENT COUNSELING INFORMATION**

\* Sections or subsections omitted from the full prescribing information are not listed.

---

## **FULL PRESCRIBING INFORMATION**

### **WARNING: NOT FOR TREATMENT OF OBESITY OR FOR WEIGHT LOSS**

**Thyroid hormones, including levothyroxine sodium tablets, either alone or with other therapeutic agents, should not be used for the treatment of obesity or for weight loss.**

**In euthyroid patients, doses within the range of daily hormonal requirements are ineffective for weight reduction.**

**Larger doses may produce serious or even life-threatening manifestations of toxicity, particularly when given in association with sympathomimetic amines such as those used for their anorectic effects [see Adverse Reactions (6), Drug Interactions (7.7), and Overdosage (10)].**

## **1 INDICATIONS AND USAGE**

### **Hypothyroidism**

Levothyroxine sodium tablets are indicated in adult and pediatric patients, including neonates, as a replacement therapy in primary (thyroidal), secondary (pituitary), and

tertiary (hypothalamic) congenital or acquired hypothyroidism.

### **Pituitary Thyrotropin (Thyroid-Stimulating Hormone, TSH) Suppression**

Levothyroxine sodium tablets are indicated in adult and pediatric patients, including neonates, as an adjunct to surgery and radioiodine therapy in the management of thyrotropin-dependent well-differentiated thyroid cancer.

#### Limitations of Use

- Levothyroxine sodium tablets are not indicated for suppression of benign thyroid nodules and nontoxic diffuse goiter in iodine-sufficient patients as there are no clinical benefits and overtreatment with levothyroxine sodium tablets may induce hyperthyroidism [see *Warnings and Precautions (5.1)*].
- Levothyroxine sodium tablets are not indicated for treatment of hypothyroidism during the recovery phase of subacute thyroiditis.

## **2 DOSAGE AND ADMINISTRATION**

### **2.1 Important Administration Instructions**

Administer levothyroxine sodium tablets as a single daily dose, on an empty stomach, one-half to one hour before breakfast.

Administer levothyroxine sodium tablets at least 4 hours before or after drugs known to interfere with levothyroxine sodium tablets absorption [see *Drug Interactions (7.1)*].

Evaluate the need for dosage adjustments when regularly administering within one hour of certain foods that may affect levothyroxine sodium tablets absorption [see *Dosage and Administration (2.2 and 2.3)*, *Drug Interactions (7.9)* and *Clinical Pharmacology (12.3)*].

Administer levothyroxine sodium tablets to pediatric patients who cannot swallow intact tablets by crushing the tablet, suspending the freshly crushed tablet in a small amount (5 to 10 mL) of water and immediately administering the suspension by spoon or dropper. Ensure the patient ingests the full amount of the suspension. Do not store the suspension. Do not administer in foods that decrease absorption of levothyroxine sodium tablets, such as soybean-based infant formula [see *Drug Interactions (7.9)*].

### **2.2 Important Considerations for Dosing**

The dosage of levothyroxine sodium tablets for hypothyroidism or pituitary TSH suppression depends on a variety of factors including: the patient's age, body weight, cardiovascular status, concomitant medical conditions (including pregnancy), concomitant medications, co-administered food and the specific nature of the condition being treated [see *Dosage and Administration (2.3)*, *Warnings and Precautions (5)*, and *Drug Interactions (7)*]. Dosing must be individualized to account for these factors and dosage adjustments made based on periodic assessment of the patient's clinical response and laboratory parameters [see *Dosage and Administration (2.4)*]. For adult patients with primary hypothyroidism, titrate until the patient is clinically euthyroid and the serum TSH returns to normal [see *Dosage and Administration (2.3)*].

For secondary or tertiary hypothyroidism, serum TSH is not a reliable measure of levothyroxine sodium tablets dosage adequacy and should not be used to monitor therapy. Use the serum free-T4 level to titrate levothyroxine sodium tablets dosing until

the patient is clinically euthyroid and the serum free-T4 level is restored to the upper half of the normal range [see *Dosage and Administration* (2.3)].

Inquire whether patients are taking biotin or biotin-containing supplements. If so, advise them to stop biotin supplementation at least 2 days before assessing TSH and/or T4 levels [see *Dosage and Administration* (2.4) and *Drug Interactions* (7.10)].

The peak therapeutic effect of a given dose of levothyroxine sodium tablets may not be attained for 4 to 6 weeks.

## 2.3 Recommended Dosage and Titration

### *Primary, Secondary, and Tertiary Hypothyroidism in Adults*

The recommended starting daily dosage of levothyroxine sodium tablets in adults with primary, secondary, or tertiary hypothyroidism is based on age and comorbid cardiac conditions, as described in Table 1. For patients at risk of atrial fibrillation or patients with underlying cardiac disease, start with a lower dosage and titrate the dosage more slowly to avoid exacerbation of cardiac symptoms. Dosage titration is based on serum TSH or free-T4 [see *Dosage and Administration* (2.2)].

**Table 1. Levothyroxine Sodium Tablets Dosing Guidelines for Hypothyroidism in Adults \***

Patient Population	Starting Dosage	Dosage Titration Based on Serum TSH or Free-T4
Adults diagnosed with hypothyroidism	Full replacement dose is 1.6 mcg/kg/day. Some patients require a lower starting dose.	Titrate dosage by 12.5 to 25 mcg increments every 4 to 6 weeks, as needed until the patient is euthyroid.
Adults at risk for atrial fibrillation or with underlying cardiac disease	Lower starting dose (less than 1.6 mcg/kg/day)	Titrate dosage every 6 to 8 weeks, as needed until the patient is euthyroid.
Geriatric patients	Lower starting dose (less than 1.6 mcg/kg/day)	

\* Dosages greater than 200 mcg/day are seldom required. An inadequate response to daily dosages greater than 300 mcg/day is rare and may indicate poor compliance, malabsorption, drug interactions, or a combination of these factors. [see *Dosage and Administration* (2.1) and *Drug Interactions* (7)].

### *Primary, Secondary and Tertiary Hypothyroidism in Pediatric Patients*

The recommended starting daily dosage of levothyroxine sodium tablets in pediatric patients with primary, secondary, or tertiary hypothyroidism is based on body weight and changes with age as described in Table 2. Titrate the dosage (every 2 weeks) as needed based on serum TSH or free-T4 until the patient is euthyroid [see *Dosage and Administration* (2.2)].

**Table 2. Levothyroxine Sodium Tablets Dosing Guidelines for Hypothyroidism in Pediatric Patients**

Age	Starting Daily Dosage Per Kg Body
-----	-----------------------------------

	<b>Weight*</b>
0 to 3 months	10 to 15 mcg/kg/day
3 to 6 months	8 to 10 mcg/kg/day
6 to 12 months	6 to 8 mcg/kg/day
1 to 5 years	5 to 6 mcg/kg/day
6 to 12 years	4 to 5 mcg/kg/day
Greater than 12 years but growth and puberty incomplete	2 to 3 mcg/kg/day
Growth and puberty complete	1.6 mcg/kg/day

\* Adjust dosage based on clinical response and laboratory parameters [see Dosage and Administration (2.4) and Use in Specific Populations (8.4)].

*Pediatric Patients from Birth to 3 Months of Age at Risk for Cardiac Failure.*

Start at a lower starting dosage and increase the dosage every 4 to 6 weeks as needed based on clinical and laboratory response.

*Pediatric Patients at Risk for Hyperactivity*

To minimize the risk of hyperactivity, start at one-fourth the recommended full replacement dosage, and increase on a weekly basis by one-fourth the full recommended replacement dosage until the full recommended replacement dosage is reached.

Hypothyroidism in Pregnant Patients

For pregnant patients with pre-existing hypothyroidism, measure serum TSH and free-T4 as soon as pregnancy is confirmed and, at minimum, during each trimester of pregnancy. In pregnant patients with primary hypothyroidism, maintain serum TSH in the trimester-specific reference range.

The recommended daily dosage of levothyroxine sodium tablets in pregnant patients is described in Table 3.

**Table 3. Levothyroxine Sodium Tablets Dosing Guidelines for Hypothyroidism in Pregnant Patients**

<b>Patient Population</b>	<b>Starting Dosage</b>	<b>Dose Adjustment and Titration</b>
Pre-existing primary hypothyroidism with serum TSH above normal trimester-specific range	Pre-pregnancy dosage may increase during pregnancy	Increase levothyroxine sodium tablet dosage by 12.5 to 25 mcg per day. Monitor TSH every 4 weeks until a stable dose is reached and serum TSH is within normal trimester-specific range. Reduce levothyroxine sodium tablet dosage to pre-pregnancy levels immediately after delivery. Monitor serum TSH 4 to 8 weeks postpartum.
New onset hypothyroidism (TSH $\geq$ 10)	1.6 mcg/kg/day	Monitor serum TSH every 4 weeks and adjust levothyroxine

mIU per liter)		sodium tablet dosage until
New onset hypothyroidism (TSH < 10 mIU per liter)	1.0 mcg/kg/day	serum TSH is within normal trimester-specific range.

### *TSH Suppression in Well-differentiated Thyroid Cancer in Adult and Pediatric Patients*

The levothyroxine sodium tablets dosage is based on the target level of TSH suppression for the stage and clinical status of thyroid cancer.

## **2.4 Monitoring TSH and/or Thyroxine (T4) Levels**

Assess the adequacy of therapy by periodic assessment of laboratory tests and clinical evaluation.

Biotin supplementation may interfere with immunoassays for TSH, T4, and T3, resulting in erroneous thyroid hormone test results. Stop biotin and biotin-containing supplements for at least 2 days before assessing TSH and/or T4 levels [see *Drug Interactions (7.10)*].

Persistent clinical and laboratory evidence of hypothyroidism despite an apparent adequate replacement dose of levothyroxine sodium tablets may be evidence of inadequate absorption, poor compliance, drug interactions, or a combination of these factors.

### *Adults*

In adult patients with primary hypothyroidism, monitor serum TSH levels after an interval of 6 to 8 weeks after any change in dosage. In patients on a stable and appropriate replacement dosage, evaluate clinical and biochemical response every 6 to 12 months and whenever there is a change in the patient's clinical status.

### *Pediatric Patients*

In patients with hypothyroidism, assess the adequacy of replacement therapy by measuring both serum TSH and total or free-T4. Monitor TSH and total or free-T4 in pediatric patients as follows: 2 and 4 weeks after the initiation of treatment, 2 weeks after any change in dosage, and then every 3 to 12 months thereafter following dosage stabilization until growth is completed. Poor compliance or abnormal values may necessitate more frequent monitoring. Perform routine clinical examination, including assessment of development, mental and physical growth, and bone maturation, at regular intervals.

The general aim of therapy is to normalize the serum TSH level. TSH may not normalize in some patients due to *in utero* hypothyroidism causing a resetting of pituitary-thyroid feedback. Failure of the serum T4 to increase into the upper half of the normal range within 2 weeks of initiation of levothyroxine sodium tablets therapy and/or of the serum TSH to decrease below 20 mIU per liter within 4 weeks may indicate the patient is not receiving adequate therapy. Assess compliance, dose of medication administered, and method of administration prior to increasing the dose of levothyroxine sodium tablets [see *Warnings and Precautions (5.1)* and *Use in Specific Populations (8.4)*].

### *Secondary and Tertiary Hypothyroidism*

Monitor serum free-T4 levels and maintain in the upper half of the normal range in these patients.

### 3 DOSAGE FORMS AND STRENGTHS

Levothyroxine sodium tablets USP are round, colored, scored and debossed with following debossing details on one side and break-line on other side. They are available as follows (Table 4):

**Table 4: Levothyroxine Sodium Tablet Strengths and Identifying Features**

Tablet Strength	Tablet Color/Shape	Debossing Details
25 mcg	Peach/Round	L15
50 mcg	White/Round	L16
75 mcg	Violet/Round	L17
88 mcg	Olive/Round	L19
100 mcg	Yellow/Round	L20
112 mcg	Rose/Round	L21
125 mcg	Tan/Round	L22
137 mcg	Turquoise/Round	L23
150 mcg	Blue/Round	L24
175 mcg	Lilac/Round	L25
200 mcg	Pink/Round	L26
300 mcg	Green/Round	L27

### 4 CONTRAINDICATIONS

Levothyroxine sodium tablets are contraindicated in patients with uncorrected adrenal insufficiency [see *Warnings and Precautions (5.4)*].

### 5 WARNINGS AND PRECAUTIONS

#### 5.1 Serious Risks Related to Overtreatment or Undertreatment with Levothyroxine sodium tablets

Levothyroxine sodium tablet has a narrow therapeutic index. Overtreatment or undertreatment with Levothyroxine sodium tablets may have negative effects on growth and development, cardiovascular function, bone metabolism, reproductive function, cognitive function, gastrointestinal function, and glucose and lipid metabolism in adult or pediatric patients.

In pediatric patients with congenital and acquired hypothyroidism, undertreatment may adversely affect cognitive development and linear growth, and overtreatment is associated with craniosynostosis and acceleration of bone age [see *Use in Specific Populations (8.4)*].

Titrate the dose of Levothyroxine sodium tablets carefully and monitor response to titration to avoid these effects [see *Dosage and Administration (2.4)*]. Consider the potential for food or drug interactions and adjust the administration or dosage of Levothyroxine sodium tablets as needed [see *Dosage and Administration (2.1)*, *Drug Interactions (7.1)*, and *Clinical Pharmacology (12.3)*].



## **5.2 Cardiac Adverse Reactions in the Elderly and in Patients with Underlying Cardiovascular Disease**

Over-treatment with levothyroxine may cause an increase in heart rate, cardiac wall thickness, and cardiac contractility and may precipitate angina or arrhythmias, particularly in patients with cardiovascular disease and in elderly patients. Initiate levothyroxine sodium tablets therapy in this population at lower doses than those recommended in younger individuals or in patients without cardiac disease [see *Dosage and Administration* (2.3), *Use in Specific Populations* (8.5)].

Monitor for cardiac arrhythmias during surgical procedures in patients with coronary artery disease receiving suppressive levothyroxine sodium tablets therapy. Monitor patients receiving concomitant levothyroxine sodium tablets and sympathomimetic agents for signs and symptoms of coronary insufficiency.

If cardiac symptoms develop or worsen, reduce the levothyroxine sodium tablets dose or withhold for one week and restart at a lower dose.

## **5.3 Myxedema Coma**

Myxedema coma is a life-threatening emergency characterized by poor circulation and hypometabolism and may result in unpredictable absorption of levothyroxine sodium from the gastrointestinal tract. Use of oral thyroid hormone drug products is not recommended to treat myxedema coma. Administer thyroid hormone products formulated for intravenous administration to treat myxedema coma.

## **5.4 Acute Adrenal Crisis in Patients with Concomitant Adrenal Insufficiency**

Thyroid hormone increases metabolic clearance of glucocorticoids. Initiation of thyroid hormone therapy prior to initiating glucocorticoid therapy may precipitate an acute adrenal crisis in patients with adrenal insufficiency. Treat patients with adrenal insufficiency with replacement glucocorticoids prior to initiating treatment with levothyroxine sodium tablets [see *Contraindications* (4)].

## **5.5 Worsening of Diabetic Control**

Addition of levothyroxine therapy in patients with diabetes mellitus may worsen glycemic control and result in increased antidiabetic agent or insulin requirements. Carefully monitor glycemic control after starting, changing, or discontinuing levothyroxine sodium tablets [see *Drug Interactions* (7.2)].

## **5.6 Decreased Bone Mineral Density Associated with Thyroid Hormone Over-Replacement**

Increased bone resorption and decreased bone mineral density may occur as a result of levothyroxine over-replacement, particularly in post-menopausal women. The increased bone resorption may be associated with increased serum levels and urinary excretion of calcium and phosphorous, elevations in bone alkaline phosphatase, and suppressed serum parathyroid hormone levels. Administer the minimum dose of levothyroxine sodium tablets that achieves the desired clinical and biochemical response to mitigate this risk.

## 6 ADVERSE REACTIONS

Adverse reactions associated with levothyroxine sodium tablets therapy are primarily those of hyperthyroidism due to therapeutic overdosage [see *Warnings and Precautions (5)*, *Overdosage (10)*]. They include the following:

- *General*: fatigue, increased appetite, weight loss, heat intolerance, fever, excessive sweating
- *Central nervous system*: headache, hyperactivity, nervousness, anxiety, irritability, emotional lability, insomnia
- *Musculoskeletal*: tremors, muscle weakness, muscle spasm
- *Cardiovascular*: palpitations, tachycardia, arrhythmias, increased pulse and blood pressure, heart failure, angina, myocardial infarction, cardiac arrest
- *Respiratory*: dyspnea
- *Gastrointestinal*: diarrhea, vomiting, abdominal cramps, elevations in liver function tests
- *Dermatologic*: hair loss, flushing, rash
- *Endocrine*: decreased bone mineral density
- *Reproductive*: menstrual irregularities, impaired fertility

Seizures have been reported rarely with the institution of levothyroxine therapy.

### Adverse Reactions in Pediatric Patients

Pseudotumor cerebri and slipped capital femoral epiphysis have been reported in pediatric patients receiving levothyroxine therapy. Overtreatment may result in craniosynostosis in infants who have not undergone complete closure of the fontanelles, and in premature closure of the epiphyses in pediatric patients still experiencing growth with resultant compromised adult height.

### Hypersensitivity Reactions

Hypersensitivity reactions to inactive ingredients have occurred in patients treated with thyroid hormone products. These include urticaria, pruritus, skin rash, flushing, angioedema, various gastrointestinal symptoms (abdominal pain, nausea, vomiting and diarrhea), fever, arthralgia, serum sickness, and wheezing. Hypersensitivity to levothyroxine itself is not known to occur.

## 7 DRUG INTERACTIONS

### 7.1 Drugs Known to Affect Thyroid Hormone Pharmacokinetics

Many drugs can exert effects on thyroid hormone pharmacokinetics and metabolism (e.g., absorption, synthesis, secretion, catabolism, protein binding, and target tissue response) and may alter the therapeutic response to levothyroxine sodium tablets (Tables 5 to 8).

**Table 5. Drugs That May Decrease T4 Absorption (Hypothyroidism)**

Potential impact: Concurrent use may reduce the efficacy of levothyroxine sodium tablets by binding and delaying or preventing absorption, potentially resulting in hypothyroidism.	
Drug or Drug Class	Effect
Phosphate Binders	Phosphate binders may bind to levothyroxine.

(e.g., calcium carbonate, ferrous sulfate, sevelamer, lanthanum)	Administer levothyroxine sodium tablets at least 4 hours apart from these agents.
Orlistat	Monitor patients treated concomitantly with orlistat and levothyroxine sodium tablets for changes in thyroid function.
Bile Acid Sequestrants (e.g., colestevlam, cholestyramine, colestipol) Ion Exchange Resins (e.g., Kayexalate)	Bile acid sequestrants and ion exchange resins are known to decrease levothyroxine absorption. Administer levothyroxine sodium tablets at least 4 hours prior to these drugs or monitor TSH levels.
Proton Pump Inhibitors Sucralfate Antacids (e.g., aluminum & magnesium hydroxides, simethicone)	Gastric acidity is an essential requirement for adequate absorption of levothyroxine. Sucralfate, antacids and proton pump inhibitors may cause hypochlorhydria, affect intragastric pH, and reduce levothyroxine absorption. Monitor patients appropriately.

**Table 6. Drugs That May Alter T4 and Triiodothyronine (T3) Serum Transport Without Affecting Free Thyroxine (FT4) Concentration (Euthyroidism)**

<b>Drug or Drug Class</b>	<b>Effect</b>
Clofibrate Estrogen-containing oral contraceptives Estrogens (oral) Heroin / Methadone 5-Fluorouracil Mitotane Tamoxifen	These drugs may increase serum thyroxine-binding globulin (TBG) concentration.
Androgens / Anabolic Steroids Asparaginase Glucocorticoids Slow-Release Nicotinic Acid	These drugs may decrease serum TBG concentration.
Potential impact (below): Administration of these agents with levothyroxine sodium tablets results in an initial transient increase in FT4. Continued administration results in a decrease in serum T4 and normal FT4 and TSH concentrations.	
Salicylates (> 2 g/day)	Salicylates inhibit binding of T4 and T3 to TBG and transthyretin. An initial increase in serum FT4 is followed by return of FT4 to normal levels with sustained therapeutic serum salicylate concentrations, although total T4 levels may decrease by as much as 30%.
Other drugs: Carbamazepine Furosemide (> 80 mg IV) Heparin Hydantoins Non-Steroidal Anti-inflammatory Drugs	These drugs may cause protein-binding site displacement. Furosemide has been shown to inhibit the protein binding of T4 to TBG and albumin, causing an increase free T4 fraction in serum. Furosemide competes for T4-binding sites on TBG, prealbumin, and albumin, so that a single high dose can acutely lower the total T4 level. Phenytoin and carbamazepine

-Fenamates	reduce serum protein binding of levothyroxine, and total and free T4 may be reduced by 20% to 40%, but most patients have normal serum TSH levels and are clinically euthyroid. Closely monitor thyroid hormone parameters.
------------	---

**Table 7. Drugs That May Alter Hepatic Metabolism of T4 (Hypothyroidism)**

Potential impact: Stimulation of hepatic microsomal drug-metabolizing enzyme activity may cause increased hepatic degradation of levothyroxine, resulting in increased levothyroxine sodium tablets requirements.	
Drug or Drug Class	Effect
Phenobarbital Rifampin	Phenobarbital has been shown to reduce the response to thyroxine. Phenobarbital increases L-thyroxine metabolism by inducing uridine 5'-diphospho-glucuronosyltransferase (UGT) and leads to lower T4 serum levels. Changes in thyroid status may occur if barbiturates are added or withdrawn from patients being treated for hypothyroidism. Rifampin has been shown to accelerate the metabolism of levothyroxine.

**Table 8. Drugs That May Decrease Conversion of T4 to T3**

Potential impact: Administration of these enzyme inhibitors decreases the peripheral conversion of T4 to T3, leading to decreased T3 levels. However, serum T4 levels are usually normal but may occasionally be slightly increased.	
Drug or Drug Class	Effect
Beta-adrenergic antagonists (e.g., Propranolol > 160 mg/day)	In patients treated with large doses of propranolol (> 160 mg/day), T3 and T4 levels change, TSH levels remain normal, and patients are clinically euthyroid. Actions of particular beta-adrenergic antagonists may be impaired when a hypothyroid patient is converted to the euthyroid state.
Glucocorticoids (e.g., Dexamethasone ≥ 4 mg/day)	Short-term administration of large doses of glucocorticoids may decrease serum T3 concentrations by 30% with minimal change in serum T4 levels. However, long-term glucocorticoid therapy may result in slightly decreased T3 and T4 levels due to decreased TBG production (See above).
Other drugs: Amiodarone	Amiodarone inhibits peripheral conversion of levothyroxine (T4) to triiodothyronine (T3) and may cause isolated biochemical changes (increase in serum free-T4, and decreased or normal free-T3) in clinically euthyroid patients.

## 7.2 Antidiabetic Therapy

Addition of levothyroxine sodium tablets therapy in patients with diabetes mellitus may

worsen glycemic control and result in increased antidiabetic agent or insulin requirements. Carefully monitor glycemic control, especially when thyroid therapy is started, changed, or discontinued [see *Warnings and Precautions* (5.5)].

### **7.3 Oral Anticoagulants**

Levothyroxine sodium tablet increases the response to oral anticoagulant therapy. Therefore, a decrease in the dose of anticoagulant may be warranted with correction of the hypothyroid state or when the levothyroxine sodium tablets dose is increased. Closely monitor coagulation tests to permit appropriate and timely dosage adjustments.

### **7.4 Digitalis Glycosides**

Levothyroxine sodium tablets may reduce the therapeutic effects of digitalis glycosides. Serum digitalis glycoside levels may decrease when a hypothyroid patient becomes euthyroid, necessitating an increase in the dose of digitalis glycosides.

### **7.5 Antidepressant Therapy**

Concurrent use of tricyclic (e.g., amitriptyline) or tetracyclic (e.g., maprotiline) antidepressants and levothyroxine sodium tablets may increase the therapeutic and toxic effects of both drugs, possibly due to increased receptor sensitivity to catecholamines. Toxic effects may include increased risk of cardiac arrhythmias and central nervous system stimulation. Levothyroxine sodium tablets may accelerate the onset of action of tricyclics. Administration of sertraline in patients stabilized on levothyroxine sodium tablets may result in increased levothyroxine sodium tablets requirements.

### **7.6 Ketamine**

Concurrent use of ketamine and levothyroxine sodium tablets may produce marked hypertension and tachycardia. Closely monitor blood pressure and heart rate in these patients.

### **7.7 Sympathomimetics**

Concurrent use of sympathomimetics and levothyroxine sodium tablets may increase the effects of sympathomimetics or thyroid hormone. Thyroid hormones may increase the risk of coronary insufficiency when sympathomimetic agents are administered to patients with coronary artery disease.

### **7.8 Tyrosine-Kinase Inhibitors**

Concurrent use of tyrosine-kinase inhibitors such as imatinib may cause hypothyroidism. Closely monitor TSH levels in such patients.

### **7.9 Drug-Food Interactions**

Consumption of certain foods may affect levothyroxine sodium tablets absorption thereby necessitating adjustments in dosing [see *Dosage and Administration* (2.1)]. Soybean flour, cottonseed meal, walnuts, and dietary fiber may bind and decrease the absorption of levothyroxine sodium tablets from the gastrointestinal tract. Grapefruit juice may delay the absorption of levothyroxine and reduce its bioavailability.

## 7.10 Drug-Laboratory Test Interactions

### Thyroxine-binding Globulin (TBG)

Consider changes in TBG concentration when interpreting T4 and T3 values. Measure and evaluate unbound (free) hormone and/or determine the free-T4 index (FT4I) in this circumstance. Pregnancy, infectious hepatitis, estrogens, estrogen-containing oral contraceptives, and acute intermittent porphyria increase TBG concentration. Nephrosis, severe hypoproteinemia, severe liver disease, acromegaly, androgens, and corticosteroids decrease TBG concentration. Familial hyper- or hypo-thyroxine binding globulinemias have been described, with the incidence of TBG deficiency approximating 1 in 9000.

### Biotin

Biotin supplementation is known to interfere with thyroid hormone immunoassays that are based on a biotin and streptavidin interaction, which may result in erroneous thyroid hormone test results. Stop biotin and biotin-containing supplements for at least 2 days prior to thyroid testing.

## 8 USE IN SPECIFIC POPULATIONS

### 8.1 Pregnancy

#### Risk Summary

The clinical experience, including data from postmarketing studies, in pregnant women treated with oral levothyroxine to maintain euthyroid state have not reported increased rates of major birth defects, miscarriages, or other adverse maternal or fetal outcomes. There are risks to the mother and fetus associated with untreated hypothyroidism in pregnancy. Since TSH levels may increase during pregnancy, TSH should be monitored and levothyroxine sodium tablets dosage adjusted during pregnancy ( *see Clinical Considerations*). Animal reproductive studies have not been conducted with levothyroxine sodium. Levothyroxine sodium tablets should not be discontinued during pregnancy and hypothyroidism diagnosed during pregnancy should be promptly treated.

The estimated background risk of major birth defects and miscarriage for the indicated population is unknown. All pregnancies have a background risk of birth defect, loss, or other adverse outcomes. In the U.S. general population, the estimated background risk of major birth defects and miscarriage in clinically recognized pregnancies is 2% to 4% and 15% to 20%, respectively.

#### Clinical Considerations

##### *Disease-Associated Maternal and/or Embryo/Fetal Risk*

Maternal hypothyroidism during pregnancy is associated with a higher rate of complications, including spontaneous abortion, gestational hypertension, pre-eclampsia, stillbirth, and premature delivery. Untreated maternal hypothyroidism may have an adverse effect on fetal neurocognitive development.

##### *Dose Adjustments During Pregnancy and the Postpartum Period*

Pregnancy may increase levothyroxine sodium tablets requirements. Serum TSH levels should be monitored and the levothyroxine sodium tablets dosage adjusted during pregnancy. Since postpartum TSH levels are similar to preconception values, the levothyroxine sodium tablets dosage should return to the pre-pregnancy dose

immediately after delivery [see *Dosage and Administration (2.3)*].

## 8.2 Lactation

### Risk Summary

Published studies report that levothyroxine is present in human milk following the administration of oral levothyroxine. No adverse effects on the breastfed infant have been reported and there is no information on the effects of levothyroxine on milk production. Adequate levothyroxine treatment during lactation may normalize milk production in hypothyroid lactating mothers with low milk supply. The developmental and health benefits of breastfeeding should be considered along with the mother's clinical need for levothyroxine sodium tablets and any potential adverse effects on the breastfed infant from levothyroxine sodium tablets or from the underlying maternal condition.

## 8.4 Pediatric Use

Levothyroxine Sodium Tablets is indicated in patients from birth to less than 17 years of age:

- As a replacement therapy in primary (thyroidal), secondary (pituitary), and tertiary (hypothalamic) congenital or acquired hypothyroidism.
- As an adjunct to surgery and radioiodine therapy in the management of thyrotropin-dependent well-differentiated thyroid cancer.

Rapid restoration of normal serum T4 concentrations is essential for preventing the adverse effects of congenital hypothyroidism on cognitive development as well as on overall physical growth and maturation. Therefore, initiate levothyroxine sodium tablets therapy immediately upon diagnosis. Levothyroxine is generally continued for life in these patients. [see *Warnings and Precautions (5.1)*].

Closely monitor infants during the first 2 weeks of levothyroxine sodium tablets therapy for cardiac overload and arrhythmias.

## 8.5 Geriatric Use

Because of the increased prevalence of cardiovascular disease among the elderly, initiate levothyroxine sodium tablets at less than the full replacement dose [see *Dosage and Administration (2.3)* and *Warnings and Precautions (5.2)*]. Atrial arrhythmias can occur in elderly patients. Atrial fibrillation is the most common of the arrhythmias observed with levothyroxine overtreatment in the elderly.

## 10 OVERDOSAGE

The signs and symptoms of overdosage are those of hyperthyroidism [see *Warnings and Precautions (5)* and *Adverse Reactions (6)*]. In addition, confusion and disorientation may occur. Cerebral embolism, shock, coma, and death have been reported. Seizures occurred in a 3-year old child ingesting 3.6 mg of levothyroxine. Symptoms may not necessarily be evident or may not appear until several days after ingestion of levothyroxine sodium.

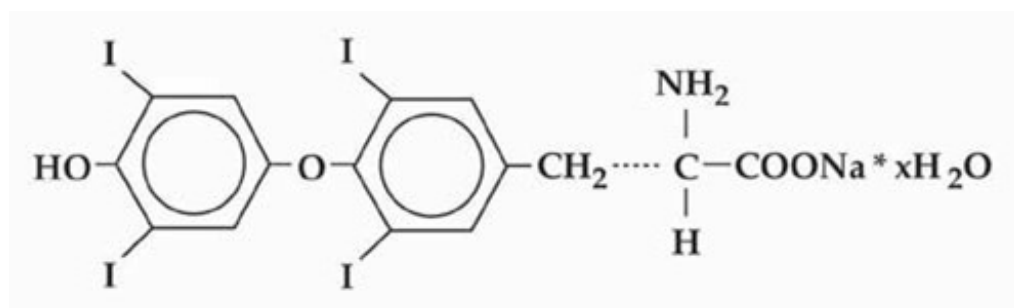
Reduce the levothyroxine sodium tablets dosage or discontinue temporarily if signs or symptoms of overdosage occur. Initiate appropriate supportive treatment as dictated by

the patient's medical status.

For current information on the management of poisoning or overdose, contact the National Poison Control Center at 1-800-222-1222 or [www.poison.org](http://www.poison.org).

## 11 DESCRIPTION

Levothyroxine sodium tablets USP is L-thyroxine (T4) and contains synthetic crystalline L-3,3',5,5' tetraiodothyronine sodium salt. Synthetic T4 is chemically identical to that produced in the human thyroid gland. Levothyroxine (T4) sodium has an empirical formula of  $C_{15}H_{10}I_4N NaO_4 \cdot xH_2O$ , molecular weight of 798.85 (anhydrous), and structural formula as shown:



Levothyroxine sodium tablets USP for oral administration are supplied in the following strengths: 25 mcg, 50 mcg, 75 mcg, 88 mcg, 100 mcg, 112 mcg, 125 mcg, 137 mcg, 150 mcg, 175 mcg, 200 mcg, and 300 mcg. Each levothyroxine sodium tablets USP contains the inactive ingredients corn starch, croscarmellose sodium, magnesium stearate, mannitol and sodium bicarbonate. Table 9 provides a listing of the color additives by tablet strength:

**Table 9. Levothyroxine Sodium Tablets USP Color Additives**

Strength (mcg)	Color additive(s)
25	FD&C Yellow No. 6 Aluminum Lake *
50	FD&C Blue 1 Aluminum Lake
75	FD&C Red No. 40 Aluminum Lake, FD&C Blue No. 2 Aluminum Lake
88	FD&C Yellow No. 6 Aluminum Lake *, FD&C Blue No. 1 Aluminum Lake, D&C Yellow No. 10 Aluminum Lake
100	FD&C Yellow No. 6 Aluminum Lake *, D&C Yellow No. 10 Aluminum Lake
112	D&C Red No. 27 Aluminum Lake
125	FD&C Yellow No. 6 Aluminum Lake *, FD&C Blue No. 1 Aluminum Lake, FD&C Red No. 40 Aluminum Lake, FD&C Blue No. 2 Aluminum Lake
137	FD&C Blue No. 1 Aluminum Lake
150	FD&C Blue No. 2 Aluminum Lake
175	FD&C Blue No. 1 Aluminum Lake, D&C Red No. 27 Aluminum Lake
200	FD&C Red No. 40 Aluminum Lake
300	FD&C Yellow No. 6 Aluminum Lake *, FD&C Blue No. 1 Aluminum Lake, D&C Yellow No. 10 Aluminum Lake

\* Note – FD&C Yellow No. 6 Aluminum Lake is peach in color.



Levothyroxine sodium tablet USP meets USP Dissolution Test 2.

## **12 CLINICAL PHARMACOLOGY**

### **12.1 Mechanism of Action**

Thyroid hormones exert their physiologic actions through control of DNA transcription and protein synthesis. Triiodothyronine (T3) and L-thyroxine (T4) diffuse into the cell nucleus and bind to thyroid receptor proteins attached to DNA. This hormone nuclear receptor complex activates gene transcription and synthesis of messenger RNA and cytoplasmic proteins.

The physiological actions of thyroid hormones are produced predominantly by T3, the majority of which (approximately 80%) is derived from T4 by deiodination in peripheral tissues.

### **12.2 Pharmacodynamics**

Oral levothyroxine sodium is a synthetic T4 hormone that exerts the same physiologic effect as endogenous T4, thereby maintaining normal T4 levels when a deficiency is present.

### **12.3 Pharmacokinetics**

#### Absorption

Absorption of orally administered T4 from the gastrointestinal tract ranges from 40% to 80%. The majority of the levothyroxine sodium tablets dose is absorbed from the jejunum and upper ileum. The relative bioavailability of levothyroxine sodium tablets, compared to an equal nominal dose of oral levothyroxine sodium solution, is approximately 93%. T4 absorption is increased by fasting, and decreased in malabsorption syndromes and by certain foods such as soybeans. Dietary fiber decreases bioavailability of T4. Absorption may also decrease with age. In addition, many drugs and foods affect T4 absorption [see *Drug Interactions (7)*].

#### Distribution

Circulating thyroid hormones are greater than 99% bound to plasma proteins, including thyroxine-binding globulin (TBG), thyroxine-binding prealbumin (TBPA), and albumin (TBA), whose capacities and affinities vary for each hormone. The higher affinity of both TBG and TBPA for T4 partially explains the higher serum levels, slower metabolic clearance, and longer half-life of T4 compared to T3. Protein-bound thyroid hormones exist in reverse equilibrium with small amounts of free hormone. Only unbound hormone is metabolically active. Many drugs and physiologic conditions affect the binding of thyroid hormones to serum proteins [see *Drug Interactions (7)*]. Thyroid hormones do not readily cross the placental barrier [see *Use in Specific Populations (8.1)*].

#### Elimination

##### *Metabolism*

T4 is slowly eliminated (see Table 10). The major pathway of thyroid hormone metabolism is through sequential deiodination. Approximately 80% of circulating T3 is derived from peripheral T4 by monodeiodination. The liver is the major site of degradation for both T4 and T3, with T4 deiodination also occurring at a number of additional sites, including the kidney and other tissues. Approximately 80% of the daily

dose of T4 is deiodinated to yield equal amounts of T3 and reverse T3 (rT3). T3 and rT3 are further deiodinated to diiodothyronine. Thyroid hormones are also metabolized via conjugation with glucuronides and sulfates and excreted directly into the bile and gut where they undergo enterohepatic recirculation.

#### *Excretion*

Thyroid hormones are primarily eliminated by the kidneys. A portion of the conjugated hormone reaches the colon unchanged and is eliminated in the feces. Approximately 20% of T4 is eliminated in the stool. Urinary excretion of T4 decreases with age.

**Table 10. Pharmacokinetic Parameters of Thyroid Hormones in Euthyroid Patients**

<b>Hormone</b>	<b>Ratio in Thyroglobulin</b>	<b>Biologic Potency</b>	<b>t<sub>1/2</sub>(days)</b>	<b>Protein Binding (%)<sup>*</sup></b>
Levothyroxine (T4)	10 to 20	1	6 to 7 <sup>†</sup>	99.96
Liothyronine (T3)	1	4	≤ 2	99.5

\* Includes TBG, TBPA, and TBA

† 3 to 4 days in hyperthyroidism, 9 to 10 days in hypothyroidism

## **13 NONCLINICAL TOXICOLOGY**

### **13.1 Carcinogenesis, Mutagenesis, Impairment of Fertility**

Long-term carcinogenicity studies in animals to evaluate the carcinogenic potential of levothyroxine have not been performed. Studies to evaluate mutagenic potential and animal fertility have not been performed.

## **16 HOW SUPPLIED/STORAGE AND HANDLING**

#### How Supplied

Levothyroxine sodium tablets USP are round, colored, scored and debossed with following debossing details on one side and break-line on other side. They are supplied as follows:

<b>Strength (mcg)</b>	<b>Color/Shape</b>	<b>Debossing Details</b>	<b>Supplied as:</b>
25	Peach/Round	L15	Unit dose packages of 100 (10 x 10) NDC 60687-453-01
50	White/Round	L16	Unit dose packages of 100 (10 x 10) NDC 60687-464-01
75	Violet/Round	L17	Unit dose packages of 100 (10 x 10) NDC 60687-475-01
88	Olive/Round	L19	Unit dose packages of 100 (10 x 10) NDC 60687-486-01
100	Yellow/Round	L20	Unit dose packages of 100 (10 x 10) NDC 60687-497-01
112	Rose/Round	L21	Unit dose packages of 100 (10 x 10) NDC

			60687-508-01
125	Tan/Round	L22	Unit dose packages of 100 (10 x 10) NDC 60687-519-01
137	Turquoise/Round	L23	Unit dose packages of 100 (10 x 10) NDC 60687-563-01
150	Blue/Round	L24	Unit dose packages of 100 (10 x 10) NDC 60687-530-01
175	Lilac/Round	L25	Unit dose packages of 100 (10 x 10) NDC 60687-541-01
200	Pink/Round	L26	Unit dose packages of 100 (10 x 10) NDC 60687-552-01

### Storage and Handling

Store at 25°C (77°F); excursions permitted to 15° to 30°C (59° to 86°F) [see USP Controlled Room Temperature]. Levothyroxine sodium tablets USP should be protected from light and moisture.

**FOR YOUR PROTECTION:** Do not use if blister is torn or broken.

## **17 PATIENT COUNSELING INFORMATION**

Inform the patient of the following information to aid in the safe and effective use of Levothyroxine Sodium Tablets:

### Dosing and Administration

- Instruct patients to take levothyroxine sodium tablets only as directed by their healthcare provider.
- Instruct patients to take levothyroxine sodium tablets as a single dose, preferably on an empty stomach, one-half to one hour before breakfast.
- Inform patients that agents such as iron and calcium supplements and antacids can decrease the absorption of levothyroxine. Instruct patients not to take levothyroxine sodium tablets within 4 hours of these agents.
- Instruct patients to notify their healthcare provider if they are pregnant or breastfeeding or are thinking of becoming pregnant while taking levothyroxine sodium tablets.

### Important Information

- Inform patients that it may take several weeks before they notice an improvement in symptoms.
- Inform patients that the levothyroxine in levothyroxine sodium tablet is intended to replace a hormone that is normally produced by the thyroid gland. Generally, replacement therapy is to be taken for life.
- Inform patients that levothyroxine sodium tablets should not be used as a primary or adjunctive therapy in a weight control program.
- Instruct patients to notify their healthcare provider if they are taking any other medications, including prescription and over-the-counter preparations.
- Instruct patients to discontinue biotin or any biotin-containing supplements for at least 2 days before thyroid function testing is conducted.
- Instruct patients to notify their physician of any other medical conditions they may

have, particularly heart disease, diabetes, clotting disorders, and adrenal or pituitary gland problems, as the dose of medications used to control these other conditions may need to be adjusted while they are taking levothyroxine sodium tablets. If they have diabetes, instruct patients to monitor their blood and/or urinary glucose levels as directed by their physician and immediately report any changes to their physician. If patients are taking anticoagulants, their clotting status should be checked frequently.

- Instruct patients to notify their physician or dentist that they are taking levothyroxine sodium tablets prior to any surgery.

#### Adverse Reactions

- Instruct patients to notify their healthcare provider if they experience any of the following symptoms: rapid or irregular heartbeat, chest pain, shortness of breath, leg cramps, headache, nervousness, irritability, sleeplessness, tremors, change in appetite, weight gain or loss, vomiting, diarrhea, excessive sweating, heat intolerance, fever, changes in menstrual periods, hives or skin rash, or any other unusual medical event.
- Inform patients that partial hair loss may occur rarely during the first few months of levothyroxine sodium tablets therapy, but this is usually temporary.

LUPIN and the  are registered trademarks of Lupin Pharmaceuticals, Inc.

#### **PACKAGING INFORMATION**

American Health Packaging unit dose blisters (see How Supplied section) contain drug product from Lupin Pharmaceuticals, Inc. as follows:

(25 mcg / 100 UD) NDC 60687-453-01 packaged from NDC 68180-965  
(50 mcg / 100 UD) NDC 60687-464-01 packaged from NDC 68180-966  
(75 mcg / 100 UD) NDC 60687-475-01 packaged from NDC 68180-967  
(88 mcg / 100 UD) NDC 60687-486-01 packaged from NDC 68180-968  
(100 mcg / 100 UD) NDC 60687-497-01 packaged from NDC 68180-969  
(112 mcg / 100 UD) NDC 60687-508-01 packaged from NDC 68180-970  
(125 mcg / 100 UD) NDC 60687-519-01 packaged from NDC 68180-971  
(137 mcg / 100 UD) NDC 60687-563-01 packaged from NDC 68180-972  
(150 mcg / 100 UD) NDC 60687-530-01 packaged from NDC 68180-973  
(175 mcg / 100 UD) NDC 60687-541-01 packaged from NDC 68180-974  
(200 mcg / 100 UD) NDC 60687-552-01 packaged from NDC 68180-975

Distributed by:

**American Health Packaging**

Columbus, OH 43217

**8445301/0125(F)**

**Package/Label Display Panel - Carton - 25 mcg**

NDC 60687-**453**-01

**Levothyroxine Sodium**  
Tablets USP

**25 mcg (0.025 mg)**

100 Tablets (10 x 10)

Rx Only



(01) 0 03 60687 453 01 9

NDC 60687-**453**-01

**Levothyroxine Sodium**  
Tablets USP

**25 mcg (0.025 mg)**

100 Tablets (10 x 10)

Rx Only

**Each Tablet Contains:**

Levothyroxine Sodium USP.....25 mcg (0.025 mg)

**Usual Dosage:** See full prescribing information.

**Store** at 20° to 25°C (68° to 77°F); excursions permitted between 15° to 30°C (59° to 86°F) [see USP Controlled Room Temperature].

Protect from light and moisture.

**FOR YOUR PROTECTION:** Do not use if blister is torn or broken.

The drug product contained in this package is from  
NDC # 68180-965, Lupin Pharmaceuticals, Inc.

Distributed by: American Health Packaging, Columbus, Ohio 43217

Scan for current  
Prescribing Information →



745301  
0445301/0524

NDC 60687- **453**-01

**Levothyroxine Sodium**  
Tablets USP

**25 mcg (0.025 mg)**

**100 Tablets (10 x 10)**

**Rx Only**

**Each Tablet Contains:**

Levothyroxine Sodium USP.....25 mcg (0.025 mg)

**Usual Dosage:** See full prescribing information.

**Store** at 20° to 25°C (68° to 77°F); excursions permitted between 15° to 30°C (59° to 86°F) [see USP Controlled Room Temperature].

Protect from light and moisture.

**FOR YOUR PROTECTION:** Do not use if blister is torn or broken.

The drug product contained in this package is from  
NDC # 68180-965, Lupin Pharmaceuticals, Inc.

Distributed by: American Health Packaging, Columbus, Ohio 43217

745301

0445301/0524

### Package/Label Display Panel- Blister - 25 mcg



Levothyroxine  
Sodium Tablet USP

**25 mcg**  
**(0.025 mg)**

### Package/Label Display Panel - Carton - 50 mcg

NDC 60687-**464**-01

**Levothyroxine Sodium**  
Tablets USP

**50 mcg** (0.05 mg)

100 Tablets (10 x 10)

Rx Only



NDC 60687-**464**-01

**Levothyroxine Sodium**  
Tablets USP

**50 mcg** (0.05 mg)

100 Tablets (10 x 10)

Rx Only

**Each Tablet Contains:**

Levothyroxine Sodium USP.....50 mcg (0.05 mg)

**Usual Dosage:** See full prescribing information.

**Store** at 20° to 25°C (68° to 77°F); excursions permitted between 15° to 30°C (59° to 86°F) [see USP Controlled Room Temperature].

Protect from light and moisture.

**FOR YOUR PROTECTION:** Do not use if blister is torn or broken.

The drug product contained in this package is from  
NDC # 68180-966, Lupin Pharmaceuticals, Inc.

Distributed by: American Health Packaging, Columbus, Ohio 43217

Scan for current  
Prescribing Information →



746401  
0446401/0524

NDC 60687- **464**-01

**Levothyroxine Sodium**  
Tablets USP

**50 mcg (0.05 mg)**

**100 Tablets (10 x 10)**

**Rx Only**

**Each Tablet Contains:**

Levothyroxine Sodium USP.....50 mcg (0.05 mg)

**Usual Dosage:** See full prescribing information.

**Store** at 20° to 25°C (68° to 77°F); excursions permitted between 15° to 30°C (59° to 86°F) [see USP Controlled Room Temperature].

Protect from light and moisture.

**FOR YOUR PROTECTION:** Do not use if blister is torn or broken.

The drug product contained in this package is from  
NDC # 68180-966, Lupin Pharmaceuticals, Inc.

Distributed by: American Health Packaging, Columbus, Ohio 43217

746401

0446401/0524

### Package/Label Display Panel - Blister - 50 mcg



Levothyroxine  
Sodium Tablet USP

**50 mcg  
(0.05 mg)**

### Package/Label Display Panel - Carton - 75 mcg



NDC 60687-**475**-01

**Levothyroxine Sodium**  
Tablets USP

**75 mcg** (0.075 mg)

100 Tablets (10 x 10)

Rx Only



NDC 60687-**475**-01

**Levothyroxine Sodium**  
Tablets USP

**75 mcg** (0.075 mg)

100 Tablets (10 x 10)

Rx Only

**Each Tablet Contains:**

Levothyroxine Sodium USP.....75 mcg (0.075 mg)

**Usual Dosage:** See full prescribing information.

**Store** at 20° to 25°C (68° to 77°F); excursions permitted between 15° to 30°C (59° to 86°F) [see USP Controlled Room Temperature].

Protect from light and moisture.

**FOR YOUR PROTECTION:** Do not use if blister is torn or broken.

The drug product contained in this package is from  
NDC # 68180-967, Lupin Pharmaceuticals, Inc.

Distributed by: American Health Packaging, Columbus, Ohio 43217

Scan for current  
Prescribing Information



747501  
0447501/0524

NDC 60687- **475**-01

**Levothyroxine Sodium**  
Tablets USP

**75 mcg (0.075 mg)**

**100 Tablets (10 x 10)**

**Rx Only**

**Each Tablet Contains:**

Levothyroxine Sodium USP.....75 mcg (0.075 mg)

**Usual Dosage:** See full prescribing information.

**Store** at 20° to 25°C (68° to 77°F); excursions permitted between 15° to 30°C (59° to 86°F) [see USP Controlled Room Temperature].

Protect from light and moisture.

**FOR YOUR PROTECTION:** Do not use if blister is torn or broken.

The drug product contained in this package is from  
NDC # 68180-967, Lupin Pharmaceuticals, Inc.

Distributed by: American Health Packaging, Columbus, Ohio 43217

747501

0447501/0524

**Package/Label Display Panel - Blister - 75 mcg**



Levothyroxine  
Sodium Tablet USP

**75 mcg  
(0.075 mg)**

**Package/Label Display Panel - Carton - 88 mcg**

NDC 60687-**486**-01

**Levothyroxine Sodium**  
Tablets USP

**88 mcg** (0.088 mg)

100 Tablets (10 x 10)

Rx Only



NDC 60687-**486**-01

**Levothyroxine Sodium**  
Tablets USP

**88 mcg** (0.088 mg)

100 Tablets (10 x 10)

Rx Only

**Each Tablet Contains:**

Levothyroxine Sodium USP..... 88 mcg (0.088 mg)

**Usual Dosage:** See full prescribing information.

**Store** at 20° to 25°C (68° to 77°F); excursions permitted between 15° to 30°C (59° to 86°F) [see USP Controlled Room Temperature].

Protect from light and moisture.

**FOR YOUR PROTECTION:** Do not use if blister is torn or broken.

The drug product contained in this package is from  
NDC # 68180-968, Lupin Pharmaceuticals, Inc.

Distributed by: American Health Packaging, Columbus, Ohio 43217

Scan for current  
Prescribing Information →



748601  
0448601/0524

NDC 60687- **486**-01

**Levothyroxine Sodium**  
Tablets USP

**88 mcg (0.088 mg)**

**100 Tablets (10 x 10)**

**Rx Only**

**Each Tablet Contains:**

Levothyroxine Sodium USP..... 88 mcg (0.088 mg)

**Usual Dosage:** See full prescribing information.

**Store** at 20° to 25°C (68° to 77°F); excursions permitted between 15° to 30°C (59° to 86°F) [see USP Controlled Room Temperature].

Protect from light and moisture.

**FOR YOUR PROTECTION:** Do not use if blister is torn or broken.

The drug product contained in this package is from  
NDC # 68180-968, Lupin Pharmaceuticals, Inc.

Distributed by: American Health Packaging, Columbus, Ohio 43217

748601

0448601/0524

### Package/Label Display Panel - Blister - 88 mcg



Levothyroxine  
Sodium Tablet USP

**88 mcg**  
**(0.088 mg)**

### Package/Label Display Panel - Carton - 100 mcg

NDC 60687-**497**-01

**Levothyroxine Sodium**  
Tablets USP

**100 mcg (0.1 mg)**

100 Tablets (10 x 10)

Rx Only



NDC 60687-**497**-01

**Levothyroxine Sodium**  
Tablets USP

**100 mcg (0.1 mg)**

100 Tablets (10 x 10)

Rx Only

**Each Tablet Contains:**

Levothyroxine Sodium USP.....100 mcg (0.1 mg)

**Usual Dosage:** See full prescribing information.

**Store** at 20° to 25°C (68° to 77°F); excursions permitted between 15° to 30°C (59° to 86°F) [see USP Controlled Room Temperature].

Protect from light and moisture.

**FOR YOUR PROTECTION:** Do not use if blister is torn or broken.

The drug product contained in this package is from  
NDC # 68180-969, Lupin Pharmaceuticals, Inc.

Distributed by: American Health Packaging, Columbus, Ohio 43217

Scan for current  
Prescribing Information



749702  
0449701/0524

NDC 60687- **497**-01

**Levothyroxine Sodium**  
Tablets USP

**100 mcg (0.1 mg)**

**100 Tablets (10 x 10)**

**Rx Only**

**Each Tablet Contains:**

Levothyroxine Sodium USP.....100 mcg (0.1 mg)

**Usual Dosage:** See full prescribing information.

**Store** at 20° to 25°C (68° to 77°F); excursions permitted between 15° to 30°C (59° to 86°F) [see USP Controlled Room Temperature].



Protect from light and moisture.

**FOR YOUR PROTECTION:** Do not use if blister is torn or broken.

The drug product contained in this package is from  
NDC # 68180-969, Lupin Pharmaceuticals, Inc.

Distributed by: American Health Packaging, Columbus, Ohio 43217

749702

0449701/0524

### Package/Label Display Panel - Blister - 100 mcg



Levothyroxine  
Sodium Tablet USP

**100 mcg  
(0.1 mg)**

### Package/Label Display Panel - Carton - 112 mcg

NDC 60687-**508**-01

**Levothyroxine Sodium**  
Tablets USP

**112 mcg** (0.112 mg)

100 Tablets (10 x 10)

Rx Only



NDC 60687-**508**-01

**Levothyroxine Sodium**  
Tablets USP

**112 mcg** (0.112 mg)

100 Tablets (10 x 10)

Rx Only

**Each Tablet Contains:**

Levothyroxine Sodium USP.....112 mcg (0.112 mg)

**Usual Dosage:** See full prescribing information.

**Store** at 20° to 25°C (68° to 77°F); excursions permitted between 15° to 30°C (59° to 86°F) [see USP Controlled Room Temperature].

Protect from light and moisture.

**FOR YOUR PROTECTION:** Do not use if blister is torn or broken.

The drug product contained in this package is from  
NDC # 68180-970, Lupin Pharmaceuticals, Inc.

Distributed by: American Health Packaging, Columbus, Ohio 43217

Scan for current  
Prescribing Information



750802  
0450801/0524

NDC 60687- **508**-01

**Levothyroxine Sodium**  
Tablets USP

**112 mcg** (0.112 mg)

**100 Tablets (10 x 10)**

**Rx Only**

**Each Tablet Contains:**

Levothyroxine Sodium USP.....112 mcg (0.112 mg)

**Usual Dosage:** See full prescribing information.

**Store** at 20° to 25°C (68° to 77°F); excursions permitted between 15° to 30°C (59° to 86°F) [see USP Controlled Room Temperature].

Protect from light and moisture.

**FOR YOUR PROTECTION:** Do not use if blister is torn or broken.

The drug product contained in this package is from  
NDC # 68180-970, Lupin Pharmaceuticals, Inc.

Distributed by: American Health Packaging, Columbus, Ohio 43217

750802

0450801/0524

### Package/Label Display Panel - Blister - 112 mcg



Levothyroxine  
Sodium Tablet USP

**112 mcg  
(0.112 mg)**

### Package/Label Display Panel - Carton - 125 mcg



NDC 60687-**519**-01

**Levothyroxine Sodium**  
Tablets USP

**125 mcg** (0.125 mg)

100 Tablets (10 x 10)

Rx Only



(01) 0 03 60687 519 01 2

NDC 60687-**519**-01

**Levothyroxine Sodium**  
Tablets USP

**125 mcg** (0.125 mg)

100 Tablets (10 x 10)

Rx Only

**Each Tablet Contains:**

Levothyroxine Sodium USP ..... 125 mcg (0.125 mg)

**Usual Dosage:** See full prescribing information.

**Store** at 20° to 25°C (68° to 77°F); excursions permitted between 15° to 30°C (59° to 86°F) [see USP Controlled Room Temperature].

Protect from light and moisture.

**FOR YOUR PROTECTION:** Do not use if blister is torn or broken.

The drug product contained in this package is from  
NDC # 68180-971, Lupin Pharmaceuticals, Inc.

Distributed by: American Health Packaging, Columbus, Ohio 43217

Scan for current  
Prescribing Information



751901  
0451901/0524

NDC 60687- **519**-01

**Levothyroxine Sodium**  
Tablets USP

**125 mcg** (0.125 mg)

**100 Tablets (10 x 10)**

**Rx Only**

**Each Tablet Contains:**

Levothyroxine Sodium USP .....125 mcg (0.125 mg)

**Usual Dosage:** See full prescribing information.

**Store** at 20° to 25°C (68° to 77°F); excursions permitted between 15° to 30°C (59° to 86°F) [see USP Controlled Room Temperature].

Protect from light and moisture.

**FOR YOUR PROTECTION:** Do not use if blister is torn or broken.

The drug product contained in this package is from  
NDC # 68180-971, Lupin Pharmaceuticals, Inc.

Distributed by: American Health Packaging, Columbus, Ohio 43217

751901

0451901/0524

### Package/Label Display Panel - Blister - 125 mcg



Levothyroxine  
Sodium Tablet USP

**125 mcg  
(0.125 mg)**

### Package/Label Display Panel - Carton - 137 mcg

NDC 60687-**563**-01

**Levothyroxine Sodium**  
Tablets USP

**137 mcg** (0.137 mg)

100 Tablets (10 x 10)

Rx Only



NDC 60687-**563**-01

**Levothyroxine Sodium**  
Tablets USP

**137 mcg** (0.137 mg)

100 Tablets (10 x 10)

Rx Only

**Each Tablet Contains:**

Levothyroxine Sodium USP..... 137 mcg (0.137 mg)

**Usual Dosage:** See full prescribing information.

**Store** at 20° to 25°C (68° to 77°F); excursions permitted between 15° to 30°C (59° to 86°F) [see USP Controlled Room Temperature].

Protect from light and moisture.

**FOR YOUR PROTECTION:** Do not use if blister is torn or broken.

The drug product contained in this package is from  
NDC # 68180-972, Lupin Pharmaceuticals, Inc.

Distributed by: American Health Packaging, Columbus, Ohio 43217

Scan for current  
Prescribing Information →



756301  
0456301/0524

NDC 60687- **563**-01

**Levothyroxine Sodium**  
Tablets USP

**137 mcg** (0.137 mg)

**100 Tablets (10 x 10)**

**Rx Only**

**Each Tablet Contains:**

Levothyroxine Sodium USP..... 137 mcg (0.137 mg)

**Usual Dosage:** See full prescribing information.

**Store** at 20° to 25°C (68° to 77°F); excursions permitted between 15° to 30°C (59° to 86°F) [see USP Controlled Room Temperature].

Protect from light and moisture.

**FOR YOUR PROTECTION:** Do not use if blister is torn or broken.

The drug product contained in this package is from  
NDC # 68180-972, Lupin Pharmaceuticals, Inc.

Distributed by: American Health Packaging, Columbus, Ohio 43217

756301

0456301/0524

### Package/Label Display Panel - Blister - 137 mcg



Levothyroxine  
Sodium Tablet USP

**137 mcg**  
**(0.137 mg)**

### Package/Label Display Panel - Carton - 150 mcg

NDC 60687-**530**-01

**Levothyroxine Sodium**  
Tablets USP

**150 mcg (0.15 mg)**

100 Tablets (10 x 10)

Rx Only



(01) 0 03 60687 530 01 7

NDC 60687-**530**-01

**Levothyroxine Sodium**  
Tablets USP

**150 mcg (0.15 mg)**

100 Tablets (10 x 10)

Rx Only

**Each Tablet Contains:**

Levothyroxine Sodium USP..... 150 mcg (0.15 mg)

**Usual Dosage:** See full prescribing information.

**Store** at 20° to 25°C (68° to 77°F); excursions permitted between 15° to 30°C (59° to 86°F) [see USP Controlled Room Temperature].

Protect from light and moisture.

**FOR YOUR PROTECTION:** Do not use if blister is torn or broken.

The drug product contained in this package is from  
NDC # 68180-973, Lupin Pharmaceuticals, Inc.

Distributed by: American Health Packaging, Columbus, Ohio 43217

Scan for current  
Prescribing Information →



753001  
0453001/0524

NDC 60687- **530**-01

**Levothyroxine Sodium**  
Tablets USP

**150 mcg (0.15 mg)**

**100 Tablets (10 x 10)**

**Rx Only**

**Each Tablet Contains:**

Levothyroxine Sodium USP.....150 mcg (0.15 mg)

**Usual Dosage:** See full prescribing information.

**Store** at 20° to 25°C (68° to 77°F); excursions permitted between 15° to 30°C (59° to 86°F) [see USP Controlled Room Temperature].



Protect from light and moisture.

**FOR YOUR PROTECTION:** Do not use if blister is torn or broken.

The drug product contained in this package is from  
NDC # 68180-973, Lupin Pharmaceuticals, Inc.

Distributed by: American Health Packaging, Columbus, Ohio 43217

753001

0453001/0524

### Package/Label Display Panel - Blister - 150 mcg



Levothyroxine  
Sodium Tablet USP

**150 mcg  
(0.15 mg)**

### Package/Label Display Panel - Carton - 175 mcg

NDC 60687-**541**-01

**Levothyroxine Sodium**  
Tablets USP

**175 mcg** (0.175 mg)

**100 Tablets (10 x 10)**

**Rx Only**



NDC 60687-**541**-01

**Levothyroxine Sodium**  
Tablets USP

**175 mcg** (0.175 mg)

**100 Tablets (10 x 10)**

**Rx Only**

**Each Tablet Contains:**

Levothyroxine Sodium USP..... 175 mcg (0.175 mg)

**Usual Dosage:** See full prescribing information.

**Store** at 20° to 25°C (68° to 77°F); excursions permitted between 15° to 30°C (59° to 86°F) [see USP Controlled Room Temperature].

Protect from light and moisture.

**FOR YOUR PROTECTION:** Do not use if blister is torn or broken.

The drug product contained in this package is from  
NDC # 68180-974, Lupin Pharmaceuticals, Inc.

Distributed by: American Health Packaging, Columbus, Ohio 43217

Scan for current  
Prescribing Information →



754101  
0454101/0524

NDC 60687- **541**-01

**Levothyroxine Sodium**  
Tablets USP

**175 mcg (0.175 mg)**

**100 Tablets (10 x 10)**

**Rx Only**

**Each Tablet Contains:**

Levothyroxine Sodium USP..... 175 mcg (0.175 mg)

**Usual Dosage:** See full prescribing information.

**Store** at 20° to 25°C (68° to 77°F); excursions permitted between 15° to 30°C (59° to 86°F) [see USP Controlled Room Temperature].

Protect from light and moisture.

**FOR YOUR PROTECTION:** Do not use if blister is torn or broken.

The drug product contained in this package is from  
NDC # 68180-974, Lupin Pharmaceuticals, Inc.

Distributed by: American Health Packaging, Columbus, Ohio 43217

754101

0454101/0524

### Package/Label Display Panel - Blister - 175 mcg



Levothyroxine  
Sodium Tablet USP

**175 mcg  
(0.175 mg)**

### Package/Label Display Panel - Carton - 200 mcg



NDC 60687-**552**-01

**Levothyroxine Sodium**  
Tablets USP

**200 mcg (0.2 mg)**

100 Tablets (10 x 10)

Rx Only



NDC 60687-**552**-01

**Levothyroxine Sodium**  
Tablets USP

**200 mcg (0.2 mg)**

100 Tablets (10 x 10)

Rx Only

**Each Tablet Contains:**

Levothyroxine Sodium USP..... 200 mcg (0.2 mg)

**Usual Dosage:** See full prescribing information.

**Store** at 20° to 25°C (68° to 77°F); excursions permitted between 15° to 30°C (59° to 86°F) [see USP Controlled Room Temperature].

Protect from light and moisture.

**FOR YOUR PROTECTION:** Do not use if blister is torn or broken.

The drug product contained in this package is from  
NDC # 68180-975, Lupin Pharmaceuticals, Inc.

Distributed by: American Health Packaging, Columbus, Ohio 43217

Scan for current  
Prescribing Information →



755201  
0455201/0524

NDC 60687- **552**-01

**Levothyroxine Sodium**  
Tablets USP

**200 mcg (0.2 mg)**

**100 Tablets (10 x 10)**

**Rx Only**

**Each Tablet Contains:**

Levothyroxine Sodium USP..... 200 mcg (0.2 mg)

**Usual Dosage:** See full prescribing information.

**Store** at 20° to 25°C (68° to 77°F); excursions permitted between 15° to 30°C (59° to 86°F) [see USP Controlled Room Temperature].

Protect from light and moisture.

**FOR YOUR PROTECTION:** Do not use if blister is torn or broken.

The drug product contained in this package is from  
NDC # 68180-975, Lupin Pharmaceuticals, Inc.

Distributed by: American Health Packaging, Columbus, Ohio 43217

755201

0455201/0524

### Package/Label Display Panel - Blister - 200 mcg



Levothyroxine  
Sodium Tablet USP

**200 mcg  
(0.2 mg)**

## LEVOTHYROXINE SODIUM

levothyroxine sodium tablet

### Product Information

Product Type	HUMAN PRESCRIPTION DRUG	Item Code (Source)	NDC:60687-453(NDC:68180-965)	
Route of Administration	ORAL			
Active Ingredient/Active Moiety				
Ingredient Name		Basis of Strength	Strength	
LEVOTHYROXINE SODIUM (UNII: 9J765S329G) (LEVOTHYROXINE - UNII:Q51BO43MG4)		LEVOTHYROXINE SODIUM ANHYDROUS	0.025 mg	
Inactive Ingredients				
Ingredient Name			Strength	
STARCH, CORN (UNII: O8232NY3SJ)				
CROSCARMELLOSE SODIUM (UNII: M28OL1HH48)				
MAGNESIUM STEARATE (UNII: 70097M6I30)				
MANNITOL (UNII: 3OWL53L36A)				
SODIUM BICARBONATE (UNII: 8MDF5V39QO)				
FD&C YELLOW NO. 6 (UNII: H77VEI93A8)				
Product Characteristics				
Color	orange (Peach)	Score	2 pieces	
Shape	ROUND	Size	6mm	
Flavor		Imprint Code	L15	
Contains				
Packaging				
#	Item Code	Package Description	Marketing Start Date	Marketing End Date
1	NDC:60687-453-01	100 in 1 BOX, UNIT-DOSE	11/04/2019	
1	NDC:60687-453-11	1 in 1 BLISTER PACK; Type 0: Not a Combination Product		



## Marketing Information

Marketing Category	Application Number or Monograph Citation	Marketing Start Date	Marketing End Date
ANDA	ANDA209713	11/04/2019	

## LEVOTHYROXINE SODIUM

levothyroxine sodium tablet

### Product Information

Product Type	HUMAN PRESCRIPTION DRUG	Item Code (Source)	NDC:60687-464(NDC:68180-966)
Route of Administration	ORAL		

### Active Ingredient/Active Moiety

Ingredient Name	Basis of Strength	Strength
LEVOTHYROXINE SODIUM (UNII: 9J765S329G) (LEVOTHYROXINE - UNII:Q51BO43MG4)	LEVOTHYROXINE SODIUM ANHYDROUS	0.05 mg

Inactive Ingredients	
Ingredient Name	Strength
STARCH, CORN (UNII: O8232NY3SJ)	
CROSCARMELOSE SODIUM (UNII: M28OL1HH48)	
MAGNESIUM STEARATE (UNII: 70097M6I30)	
MANNITOL (UNII: 3OWL53L36A)	
SODIUM BICARBONATE (UNII: 8MDF5V39QO)	
FD&C BLUE NO. 1 (UNII: H3R47K3TBD)	

Product Characteristics			
Color	white	Score	2 pieces
Shape	ROUND	Size	6mm
Flavor		Imprint Code	L16
Contains			

Packaging				
#	Item Code	Package Description	Marketing Start Date	Marketing End Date
1	NDC:60687-464-01	100 in 1 BOX, UNIT-DOSE	01/03/2020	
1	NDC:60687-464-11	1 in 1 BLISTER PACK; Type 0: Not a Combination Product		



## Marketing Information

Marketing Category	Application Number or Monograph Citation	Marketing Start Date	Marketing End Date
ANDA	ANDA209713	01/03/2020	

## LEVOTHYROXINE SODIUM

levothyroxine sodium tablet

### Product Information

Product Type	HUMAN PRESCRIPTION DRUG	Item Code (Source)	NDC:60687-475(NDC:68180-967)
Route of Administration	ORAL		

### Active Ingredient/Active Moiety

Ingredient Name	Basis of Strength	Strength
LEVOTHYROXINE SODIUM (UNII: 9J765S329G) (LEVOTHYROXINE - UNII:Q51BO43MG4)	LEVOTHYROXINE SODIUM ANHYDROUS	0.075 mg

Inactive Ingredients

Ingredient Name	Strength
STARCH, CORN (UNII: O8232NY3SJ)	
CROSCARMELOSE SODIUM (UNII: M28OL1HH48)	
MAGNESIUM STEARATE (UNII: 70097M6I3O)	
MANNITOL (UNII: 3OWL53L36A)	
SODIUM BICARBONATE (UNII: 8MDF5V39QO)	
FD&C RED NO. 40 (UNII: WZB9127XOA)	
FD&C BLUE NO. 2 (UNII: L06K8R7DQK)	

Product Characteristics

Color	purple (Violet)	Score	2 pieces
Shape	ROUND	Size	6mm
Flavor		Imprint Code	L17
Contains			

Packaging

#	Item Code	Package Description	Marketing Start Date	Marketing End Date
1	NDC:60687-475-01	100 in 1 BOX, UNIT-DOSE	10/29/2019	
1	NDC:60687-475-11	1 in 1 BLISTER PACK; Type 0: Not a Combination Product		



## Marketing Information

Marketing Category	Application Number or Monograph Citation	Marketing Start Date	Marketing End Date
ANDA	ANDA209713	10/29/2019	

## LEVOTHYROXINE SODIUM

levothyroxine sodium tablet

### Product Information

Product Type	HUMAN PRESCRIPTION DRUG	Item Code (Source)	NDC:60687-486(NDC:68180-968)
Route of Administration	ORAL		

### Active Ingredient/Active Moiety

Ingredient Name	Basis of Strength	Strength
LEVOTHYROXINE SODIUM (UNII: 9J765S329G) (LEVOTHYROXINE - UNII:Q51BO43MG4)	LEVOTHYROXINE SODIUM ANHYDROUS	0.088 mg



## Inactive Ingredients

Ingredient Name	Strength
<b>STARCH, CORN</b> (UNII: O8232NY3SJ)	
<b>CROSCARMELOSE SODIUM</b> (UNII: M28OL1HH48)	
<b>MAGNESIUM STEARATE</b> (UNII: 70097M6I30)	
<b>MANNITOL</b> (UNII: 3OWL53L36A)	
<b>SODIUM BICARBONATE</b> (UNII: 8MDF5V39QO)	
<b>FD&amp;C YELLOW NO. 6</b> (UNII: H77VEI93A8)	
<b>FD&amp;C BLUE NO. 1</b> (UNII: H3R47K3TBD)	
<b>D&amp;C YELLOW NO. 10</b> (UNII: 35SW5USQ3G)	

## Product Characteristics

<b>Color</b>	green (Olive)	<b>Score</b>	2 pieces
<b>Shape</b>	ROUND	<b>Size</b>	6mm
<b>Flavor</b>		<b>Imprint Code</b>	L19
<b>Contains</b>			

## Packaging

#	Item Code	Package Description	Marketing Start Date	Marketing End Date
1	NDC:60687-486-01	100 in 1 BOX, UNIT-DOSE	10/28/2019	
1	NDC:60687-486-11	1 in 1 BLISTER PACK; Type 0: Not a Combination Product		



## Marketing Information

Marketing Category	Application Number or Monograph Citation	Marketing Start Date	Marketing End Date
ANDA	ANDA209713	10/28/2019	

## LEVOTHYROXINE SODIUM

levothyroxine sodium tablet

### Product Information

Product Type	HUMAN PRESCRIPTION DRUG	Item Code (Source)	NDC:60687-497(NDC:68180-969)
Route of Administration	ORAL		

### Active Ingredient/Active Moiety

Ingredient Name	Basis of Strength	Strength
LEVOTHYROXINE SODIUM (UNII: 9J765S329G) (LEVOTHYROXINE - UNII:Q51BO43MG4)	LEVOTHYROXINE SODIUM ANHYDROUS	0.1 mg

## Inactive Ingredients

Ingredient Name	Strength
<b>STARCH, CORN</b> (UNII: O8232NY3SJ)	
<b>CROSCARMELOSE SODIUM</b> (UNII: M28OL1HH48)	
<b>MAGNESIUM STEARATE</b> (UNII: 70097M6I3O)	
<b>MANNITOL</b> (UNII: 3OWL53L36A)	
<b>SODIUM BICARBONATE</b> (UNII: 8MDF5V39QO)	
<b>FD&amp;C YELLOW NO. 6</b> (UNII: H77VEI93A8)	
<b>D&amp;C YELLOW NO. 10</b> (UNII: 35SW5USQ3G)	

## Product Characteristics

<b>Color</b>	yellow	<b>Score</b>	2 pieces
<b>Shape</b>	ROUND	<b>Size</b>	6mm
<b>Flavor</b>		<b>Imprint Code</b>	L20
<b>Contains</b>			

## Packaging

#	Item Code	Package Description	Marketing Start Date	Marketing End Date
1	NDC:60687-497-01	100 in 1 BOX, UNIT-DOSE	11/01/2019	
1	NDC:60687-497-11	1 in 1 BLISTER PACK; Type 0: Not a Combination Product		



## Marketing Information

Marketing Category	Application Number or Monograph Citation	Marketing Start Date	Marketing End Date
ANDA	ANDA209713	11/01/2019	

## LEVOTHYROXINE SODIUM

levothyroxine sodium tablet

### Product Information

Product Type	HUMAN PRESCRIPTION DRUG	Item Code (Source)	NDC:60687-508(NDC:68180-970)
Route of Administration	ORAL		

### Active Ingredient/Active Moiety

Ingredient Name	Basis of Strength	Strength
LEVOTHYROXINE SODIUM (UNII: 9J765S329G) (LEVOTHYROXINE - UNII:Q51BO43MG4)	LEVOTHYROXINE SODIUM ANHYDROUS	0.112 mg

Inactive Ingredients

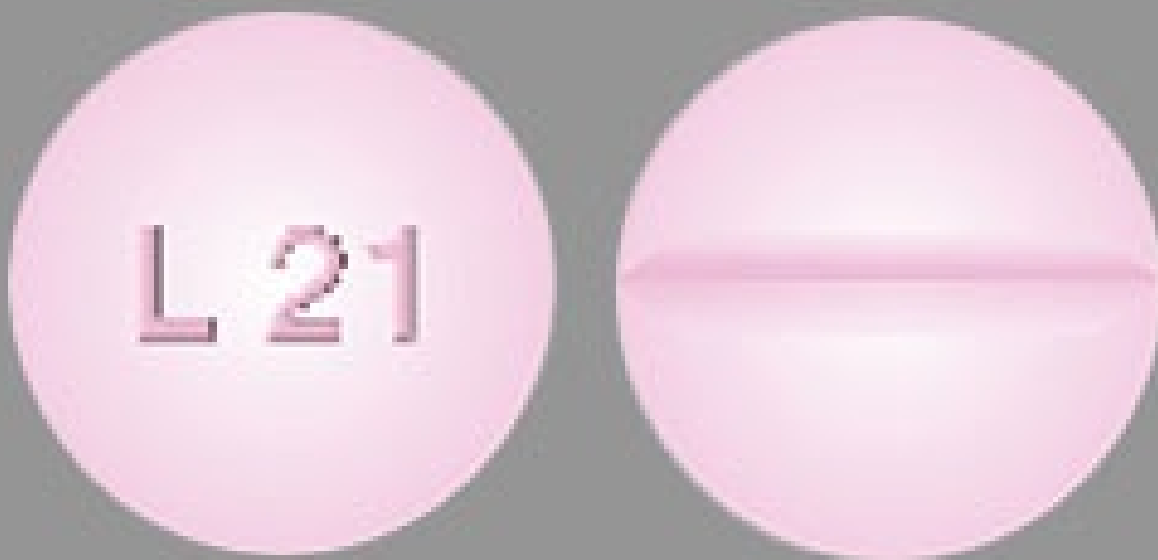
Ingredient Name	Strength
STARCH, CORN (UNII: O8232NY3SJ)	
CROSCARMELOSE SODIUM (UNII: M28OL1HH48)	
MAGNESIUM STEARATE (UNII: 70097M6I30)	
MANNITOL (UNII: 3OWL53L36A)	
SODIUM BICARBONATE (UNII: 8MDF5V39QO)	
D&C RED NO. 27 (UNII: 2LRS185U6K)	

Product Characteristics

Color	pink (Rose)	Score	2 pieces
Shape	ROUND	Size	6mm
Flavor		Imprint Code	L21
Contains			

Packaging

#	Item Code	Package Description	Marketing Start Date	Marketing End Date
1	NDC:60687-508-01	100 in 1 BOX, UNIT-DOSE	11/01/2019	
1	NDC:60687-508-11	1 in 1 BLISTER PACK; Type 0: Not a Combination Product		



## Marketing Information

Marketing Category	Application Number or Monograph Citation	Marketing Start Date	Marketing End Date
ANDA	ANDA209713	11/01/2019	

## LEVOTHYROXINE SODIUM

levothyroxine sodium tablet

### Product Information

Product Type	HUMAN PRESCRIPTION DRUG	Item Code (Source)	NDC:60687-519(NDC:68180-971)
Route of Administration	ORAL		

### Active Ingredient/Active Moiety

Ingredient Name	Basis of Strength	Strength
LEVOTHYROXINE SODIUM (UNII: 9J765S329G) (LEVOTHYROXINE - UNII:Q51BO43MG4)	LEVOTHYROXINE SODIUM ANHYDROUS	0.125 mg

## Inactive Ingredients

Ingredient Name	Strength
<b>STARCH, CORN</b> (UNII: O8232NY3SJ)	
<b>CROSCARMELOSE SODIUM</b> (UNII: M28OL1HH48)	
<b>MAGNESIUM STEARATE</b> (UNII: 70097M6I30)	
<b>MANNITOL</b> (UNII: 3OWL53L36A)	
<b>SODIUM BICARBONATE</b> (UNII: 8MDF5V39QO)	
<b>FD&amp;C YELLOW NO. 6</b> (UNII: H77VEI93A8)	
<b>FD&amp;C BLUE NO. 1</b> (UNII: H3R47K3TBD)	
<b>FD&amp;C RED NO. 40</b> (UNII: WZB9127XOA)	
<b>FD&amp;C BLUE NO. 2</b> (UNII: L06K8R7DQK)	

## Product Characteristics

<b>Color</b>	brown (Tan)	<b>Score</b>	2 pieces
<b>Shape</b>	ROUND	<b>Size</b>	6mm
<b>Flavor</b>		<b>Imprint Code</b>	L22
<b>Contains</b>			

## Packaging

#	Item Code	Package Description	Marketing Start Date	Marketing End Date
1	NDC:60687-519-01	100 in 1 BOX, UNIT-DOSE	10/25/2019	
1	NDC:60687-519-11	1 in 1 BLISTER PACK; Type 0: Not a Combination Product		



## Marketing Information

Marketing Category	Application Number or Monograph Citation	Marketing Start Date	Marketing End Date
ANDA	ANDA209713	10/25/2019	

## LEVOTHYROXINE SODIUM

levothyroxine sodium tablet

### Product Information

Product Type	HUMAN PRESCRIPTION DRUG	Item Code (Source)	NDC:60687-563(NDC:68180-972)
Route of Administration	ORAL		

### Active Ingredient/Active Moiety

Ingredient Name	Basis of Strength	Strength
LEVOTHYROXINE SODIUM (UNII: 9J765S329G) (LEVOTHYROXINE - UNII:Q51BO43MG4)	LEVOTHYROXINE SODIUM ANHYDROUS	0.137 mg



Inactive Ingredients

Ingredient Name	Strength
STARCH, CORN (UNII: O8232NY3SJ)	
CROSCARMELOSE SODIUM (UNII: M28OL1HH48)	
MAGNESIUM STEARATE (UNII: 70097M6I30)	
MANNITOL (UNII: 3OWL53L36A)	
SODIUM BICARBONATE (UNII: 8MDF5V39QO)	
FD&C BLUE NO. 1 (UNII: H3R47K3TBD)	

Product Characteristics

Color	turquoise	Score	2 pieces
Shape	ROUND	Size	6mm
Flavor		Imprint Code	L23
Contains			

Packaging

#	Item Code	Package Description	Marketing Start Date	Marketing End Date
1	NDC:60687-563-01	100 in 1 BOX	03/25/2020	
1	NDC:60687-563-11	1 in 1 BLISTER PACK; Type 0: Not a Combination Product		



## Marketing Information

Marketing Category	Application Number or Monograph Citation	Marketing Start Date	Marketing End Date
ANDA	ANDA209713	03/25/2020	

## LEVOTHYROXINE SODIUM

levothyroxine sodium tablet

### Product Information

Product Type	HUMAN PRESCRIPTION DRUG	Item Code (Source)	NDC:60687-530(NDC:68180-973)
Route of Administration	ORAL		

### Active Ingredient/Active Moiety

Ingredient Name	Basis of Strength	Strength
LEVOTHYROXINE SODIUM (UNII: 9J765S329G) (LEVOTHYROXINE - UNII:Q51BO43MG4)	LEVOTHYROXINE SODIUM ANHYDROUS	0.15 mg

## Inactive Ingredients

Ingredient Name	Strength
<b>STARCH, CORN</b> (UNII: O8232NY3SJ)	
<b>CROSCARMELOSE SODIUM</b> (UNII: M28OL1HH48)	
<b>MAGNESIUM STEARATE</b> (UNII: 70097M6I30)	
<b>MANNITOL</b> (UNII: 3OWL53L36A)	
<b>SODIUM BICARBONATE</b> (UNII: 8MDF5V39QO)	
<b>FD&amp;C BLUE NO. 2</b> (UNII: L06K8R7DQK)	

## Product Characteristics

<b>Color</b>	blue	<b>Score</b>	2 pieces
<b>Shape</b>	ROUND	<b>Size</b>	6mm
<b>Flavor</b>		<b>Imprint Code</b>	L24
<b>Contains</b>			

## Packaging

#	Item Code	Package Description	Marketing Start Date	Marketing End Date
1	NDC:60687-530-01	100 in 1 BOX	10/30/2019	
1	NDC:60687-530-11	1 in 1 BLISTER PACK; Type 0: Not a Combination Product		



## Marketing Information

Marketing Category	Application Number or Monograph Citation	Marketing Start Date	Marketing End Date
ANDA	ANDA209713	10/30/2019	

## LEVOTHYROXINE SODIUM

levothyroxine sodium tablet

### Product Information

Product Type	HUMAN PRESCRIPTION DRUG	Item Code (Source)	NDC:60687-541(NDC:68180-974)
Route of Administration	ORAL		

### Active Ingredient/Active Moiety

Ingredient Name	Basis of Strength	Strength
LEVOTHYROXINE SODIUM (UNII: 9J765S329G) (LEVOTHYROXINE - UNII:Q51BO43MG4)	LEVOTHYROXINE SODIUM ANHYDROUS	0.175 mg

**Inactive Ingredients**

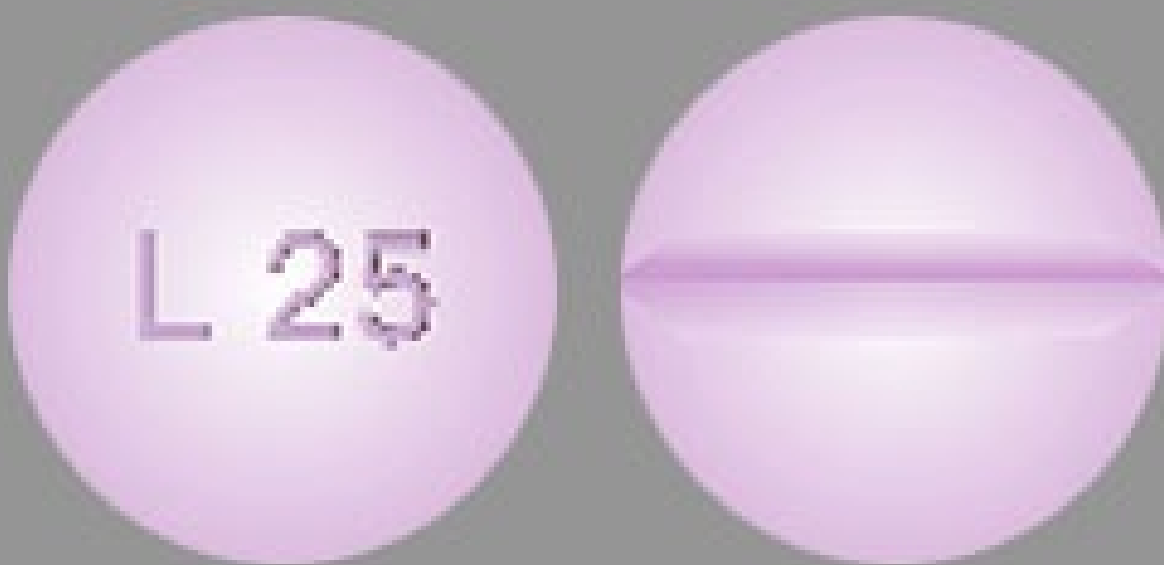
Ingredient Name	Strength
<b>STARCH, CORN</b> (UNII: O8232NY3SJ)	
<b>CROSCARMELOSE SODIUM</b> (UNII: M28OL1HH48)	
<b>MAGNESIUM STEARATE</b> (UNII: 70097M6I30)	
<b>MANNITOL</b> (UNII: 3OWL53L36A)	
<b>SODIUM BICARBONATE</b> (UNII: 8MDF5V39QO)	
<b>FD&amp;C BLUE NO. 1</b> (UNII: H3R47K3TBD)	
<b>D&amp;C RED NO. 27</b> (UNII: 2LRS185U6K)	

**Product Characteristics**

<b>Color</b>	purple (Lilac)	<b>Score</b>	2 pieces
<b>Shape</b>	ROUND	<b>Size</b>	6mm
<b>Flavor</b>		<b>Imprint Code</b>	L25
<b>Contains</b>			

**Packaging**

#	Item Code	Package Description	Marketing Start Date	Marketing End Date
1	NDC:60687-541-01	100 in 1 BOX, UNIT-DOSE	10/29/2019	
1	NDC:60687-541-11	1 in 1 BLISTER PACK; Type 0: Not a Combination Product		



## Marketing Information

Marketing Category	Application Number or Monograph Citation	Marketing Start Date	Marketing End Date
ANDA	ANDA209713	10/29/2019	

## LEVOTHYROXINE SODIUM

levothyroxine sodium tablet

### Product Information

Product Type	HUMAN PRESCRIPTION DRUG	Item Code (Source)	NDC:60687-552(NDC:68180-975)
Route of Administration	ORAL		

### Active Ingredient/Active Moiety

Ingredient Name	Basis of Strength	Strength
LEVOTHYROXINE SODIUM (UNII: 9J765S329G) (LEVOTHYROXINE - UNII:Q51BO43MG4)	LEVOTHYROXINE SODIUM ANHYDROUS	0.2 mg

Inactive Ingredients

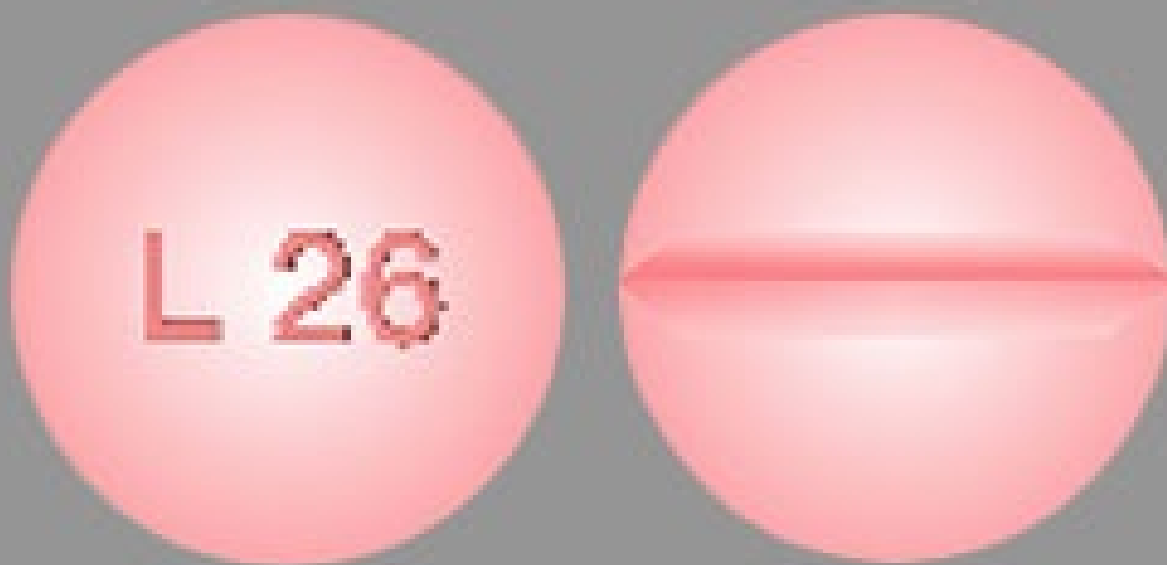
Ingredient Name	Strength
STARCH, CORN (UNII: O8232NY3SJ)	
CROSCARMELOSE SODIUM (UNII: M28OL1HH48)	
MAGNESIUM STEARATE (UNII: 70097M6I30)	
MANNITOL (UNII: 3OWL53L36A)	
SODIUM BICARBONATE (UNII: 8MDF5V39QO)	
FD&C RED NO. 40 (UNII: WZB9127XOA)	

Product Characteristics

Color	pink	Score	2 pieces
Shape	ROUND	Size	6mm
Flavor		Imprint Code	L26
Contains			

Packaging

#	Item Code	Package Description	Marketing Start Date	Marketing End Date
1	NDC:60687-552-01	100 in 1 BOX, UNIT-DOSE	01/05/2021	
1	NDC:60687-552-11	1 in 1 BLISTER PACK; Type 0: Not a Combination Product		



### Marketing Information

Marketing Category	Application Number or Monograph Citation	Marketing Start Date	Marketing End Date
ANDA	ANDA209713	01/05/2021	

**Labeler** - American Health Packaging (929561009)

### Establishment

Name	Address	ID/FEI	Business Operations
American Health Packaging		929561009	repack(60687-453, 60687-464, 60687-475, 60687-486, 60687-497, 60687-508, 60687-519, 60687-563, 60687-530, 60687-541, 60687-552)

Revised: 6/2025

American Health Packaging