

CANDESARTAN CILEXETIL AND HYDROCHLOROTHIAZIDE- candesartan cilexetil and hydrochlorothiazide tablet

Zydus Pharmaceuticals (USA) Inc.

Candesartan Cilexetil and Hydrochlorothiazide Tablets USP, for oral use

WARNING: FETAL TOXICITY

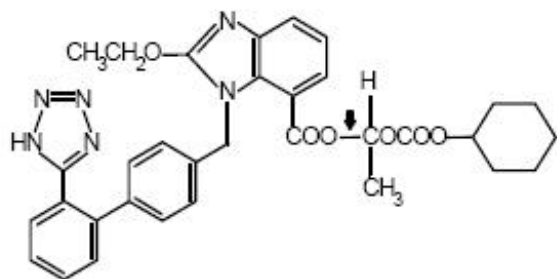
- When pregnancy is detected, discontinue candesartan cilexetil and hydrochlorothiazide tablets as soon as possible.
- Drugs that act directly on the renin-angiotensin system can cause injury and death to the developing fetus. See Warnings: Fetal Toxicity

DESCRIPTION

Candesartan cilexetil and hydrochlorothiazide tablets, USP combine an angiotensin II receptor (type AT₁) antagonist and a diuretic, hydrochlorothiazide.

Candesartan cilexetil, a nonpeptide, is chemically described as (±)-1-Hydroxyethyl 2-ethoxy-1-[p-(o-1*H*-tetrazol-5-ylphenyl)benzyl]-7-benzimidazolecarboxylate, cyclohexyl carbonate (ester).

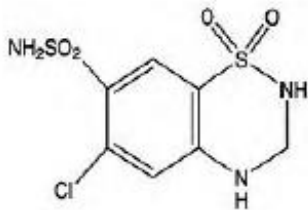
Its empirical formula is C₃₃H₃₄N₆O₆ and its structural formula is



↓ site of ester hydrolysis.

Candesartan cilexetil, USP is a white to almost white powder with a molecular weight of 610.66. It is sparingly soluble in methanol, practically insoluble in water and soluble in methylene chloride. Candesartan cilexetil is a racemic mixture containing one chiral center at the cyclohexyloxycarbonyloxy ethyl ester group. Following oral administration, candesartan cilexetil undergoes hydrolysis at the ester link to form the active drug, candesartan, which is achiral.

Hydrochlorothiazide is 6-chloro-3,4-dihydro-2*H*-1,2,4-benzothiadiazine-7-sulfonamide 1,1-dioxide. Its empirical formula is C₇H₈ClN₃O₄S₂ and its structural formula is:



Hydrochlorothiazide, USP is a white, or practically white, practically odorless, crystalline powder with a molecular weight of 297.74. It is slightly soluble in water, freely soluble in sodium hydroxide solution, in n-butylamine, and in dimethylformamide; sparingly soluble in methanol; insoluble in ether, in chloroform, and in dilute mineral acids.

Candesartan cilexetil and hydrochlorothiazide is available for oral administration in three tablet strengths.

Candesartan cilexetil and hydrochlorothiazide tablets USP, 16 mg/12.5 mg contains 16 mg of candesartan cilexetil and 12.5 mg of hydrochlorothiazide.

Candesartan cilexetil and hydrochlorothiazide tablets USP, 32 mg/12.5 mg contains 32 mg of candesartan cilexetil and 12.5 mg of hydrochlorothiazide.

Candesartan cilexetil and hydrochlorothiazide tablets USP, 32 mg/25 mg contains 32 mg of candesartan cilexetil and 25 mg of hydrochlorothiazide.

In addition, each tablet contains the following inactive ingredients: carboxy methyl cellulose calcium, corn starch, glyceryl caprylate, hydroxypropylcellulose, lactose monohydrate and magnesium stearate.

USP dissolution test pending

CLINICAL PHARMACOLOGY

Mechanism of Action

Angiotensin II is formed from angiotensin I in a reaction catalyzed by angiotensin-converting enzyme (ACE, kininase II). Angiotensin II is the principal pressor agent of the renin-angiotensin system, with effects that include vasoconstriction, stimulation of synthesis and release of aldosterone, cardiac stimulation, and renal reabsorption of sodium. Candesartan blocks the vasoconstrictor and aldosterone-secreting effects of angiotensin II by selectively blocking the binding of angiotensin II to the AT₁ receptor in many tissues, such as vascular smooth muscle and the adrenal gland. Its action is, therefore, independent of the pathways for angiotensin II synthesis.

There is also an AT₂ receptor found in many tissues, but AT₂ is not known to be associated with cardiovascular homeostasis. Candesartan has much greater affinity (> 10,000 fold) for the AT₁ receptor than for the AT₂ receptor.

Blockade of the renin-angiotensin system with ACE inhibitors, which inhibit the biosynthesis of angiotensin II from angiotensin I, is widely used in the treatment of hypertension. ACE inhibitors also inhibit the degradation of bradykinin, a reaction also catalyzed by ACE. Because candesartan does not inhibit ACE (kininase II), it does not affect the response to bradykinin. Whether this difference has clinical relevance is not yet known. Candesartan does not bind to or block other hormone receptors or ion channels known to be important in cardiovascular regulation.

Blockade of the angiotensin II receptor inhibits the negative regulatory feedback of angiotensin II on renin secretion, but the resulting increased plasma renin activity and angiotensin II circulating levels do

not overcome the effect of candesartan on blood pressure.

Hydrochlorothiazide is a thiazide diuretic. Thiazides affect the renal tubular mechanisms of electrolyte reabsorption, directly increasing excretion of sodium and chloride in approximately equivalent amounts. Indirectly, the diuretic action of hydrochlorothiazide reduces plasma volume, with consequent increases in plasma renin activity, increases in aldosterone secretion, increases in urinary potassium loss, and decreases in serum potassium. The renin-aldosterone link is mediated by angiotensin II, so coadministration of an angiotensin II receptor antagonist tends to reverse the potassium loss associated with these diuretics.

The mechanism of the antihypertensive effect of thiazides is unknown.

Pharmacokinetics

General

Candesartan Cilexetil

Candesartan cilexetil is rapidly and completely bioactivated by ester hydrolysis during absorption from the gastrointestinal tract to candesartan, a selective AT₁ subtype angiotensin II receptor antagonist. Candesartan is mainly excreted unchanged in urine and feces (via bile). It undergoes minor hepatic metabolism by O-deethylation to an inactive metabolite. The elimination half-life of candesartan is approximately 9 hours. After single and repeated administration, the pharmacokinetics of candesartan are linear for oral doses up to 32 mg of candesartan cilexetil. Candesartan and its inactive metabolite do not accumulate in serum upon repeated once-daily dosing.

Following administration of candesartan cilexetil, the absolute bioavailability of candesartan was estimated to be 15%. After tablet ingestion, the peak serum concentration (C_{max}) is reached after 3 to 4 hours. Food with a high fat content does not affect the bioavailability of candesartan after candesartan cilexetil administration.

Hydrochlorothiazide

When plasma levels have been followed for at least 24 hours, the plasma half-life has been observed to vary between 5.6 and 14.8 hours.

Metabolism and Excretion

Candesartan Cilexetil

Total plasma clearance of candesartan is 0.37 mL/min/kg, with a renal clearance of 0.19 mL/min/kg. When candesartan is administered orally, about 26% of the dose is excreted unchanged in urine. Following an oral dose of ¹⁴C-labeled candesartan cilexetil, approximately 33% of radioactivity is recovered in urine and approximately 67% in feces. Following an intravenous dose of ¹⁴C-labeled candesartan, approximately 59% of radioactivity is recovered in urine and approximately 36% in feces. Biliary excretion contributes to the elimination of candesartan.

Hydrochlorothiazide

Hydrochlorothiazide is not metabolized but is eliminated rapidly by the kidney. At least 61% of the oral dose is eliminated unchanged within 24 hours.

Distribution

Candesartan Cilexetil

The volume of distribution of candesartan is 0.13 L/kg. Candesartan is highly bound to plasma proteins (> 99%) and does not penetrate red blood cells. The protein binding is constant at candesartan plasma concentrations well above the range achieved with recommended doses. In rats, it has been demonstrated that candesartan crosses the blood-brain barrier poorly, if at all. It has also been

demonstrated in rats that candesartan passes across the placental barrier and is distributed in the fetus.

Hydrochlorothiazide

Hydrochlorothiazide crosses the placental but not the blood-brain barrier and is excreted in breast milk.

Special Populations

Pediatric

The pharmacokinetics of candesartan cilexetil have not been investigated in patients < 18 years of age.

Geriatric

The pharmacokinetics of candesartan have been studied in the elderly (≥ 65 years). The plasma concentration of candesartan was higher in the elderly (C_{\max} was approximately 50% higher, and AUC was approximately 80% higher) compared to younger subjects administered the same dose. The pharmacokinetics of candesartan were linear in the elderly, and candesartan and its inactive metabolite did not accumulate in the serum of these subjects upon repeated, once-daily administration. No initial dosage adjustment is necessary (see **DOSAGE AND ADMINISTRATION**).

Gender

There is no difference in the pharmacokinetics of candesartan between male and female subjects.

Renal Insufficiency

In hypertensive patients with renal insufficiency, serum concentrations of candesartan were elevated. After repeated dosing, the AUC and C_{\max} were approximately doubled in patients with severe renal impairment (creatinine clearance < 30 mL/min/1.73m²) compared to patients with normal kidney function. The pharmacokinetics of candesartan in hypertensive patients undergoing hemodialysis are similar to those in hypertensive patients with severe renal impairment. Candesartan cannot be removed by hemodialysis.

Thiazide diuretics are eliminated by the kidney, with a terminal half-life of 5 to 15 hours. In a study of patients with impaired renal function (mean creatinine clearance of 19 mL/min), the half-life of hydrochlorothiazide elimination was lengthened to 21 hours (see **DOSAGE AND ADMINISTRATION**).

Safety and effectiveness of candesartan cilexetil and hydrochlorothiazide in patients with severe renal impairment (CrCL ≤ 30 mL/min) have not been established. No dose adjustment is required in patients with mild CrCL 60 to 90 mL/min) or moderate (CrCL 30 to 60 mL/min) renal impairment.

Hepatic Insufficiency

The pharmacokinetics of candesartan were compared in patients with mild (Child-Pugh A) or moderate (Child-Pugh B) hepatic impairment to matched healthy volunteers following a single dose of 16 mg candesartan cilexetil. The AUC for candesartan in patients with mild and moderate hepatic impairment was increased 30% and 145% respectively. The C_{\max} for candesartan was increased 56% and 73% respectively. The pharmacokinetics of candesartan in severe hepatic impairment have not been studied. No dose adjustment is recommended for patients with mild hepatic impairment. In patients with moderate hepatic impairment, candesartan cilexetil and hydrochlorothiazide is not recommended for initiation because the appropriate starting dose, 8 mg, cannot be given. (see **DOSAGE AND ADMINISTRATION**).

Monitor patients with impaired hepatic function or progressive liver disease, since minor alterations of fluid and electrolyte balance may precipitate hepatic coma.

Pharmacodynamics

Candesartan Cilexetil

Candesartan inhibits the pressor effects of angiotensin II infusion in a dose-dependent manner. After 1 week of once-daily dosing with 8 mg of candesartan cilexetil, the pressor effect was inhibited by approximately 90% at peak with approximately 50% inhibition persisting for 24 hours.

Plasma concentrations of angiotensin I and angiotensin II, and plasma renin activity (PRA), increased in a dose-dependent manner after single and repeated administration of candesartan cilexetil to healthy subjects and hypertensive patients. ACE activity was not altered in healthy subjects after repeated candesartan cilexetil administration. The once-daily administration of up to 16 mg of candesartan cilexetil to healthy subjects did not influence plasma aldosterone concentrations, but a decrease in the plasma concentration of aldosterone was observed when 32 mg of candesartan cilexetil was administered to hypertensive patients. In spite of the effect of candesartan cilexetil on aldosterone secretion, very little effect on serum potassium was observed.

In multiple-dose studies with hypertensive patients, there were no clinically significant changes in metabolic function including serum levels of total cholesterol, triglycerides, glucose, or uric acid. In a 12 week study of 161 patients with non-insulin-dependent (type 2) diabetes mellitus and hypertension, there was no change in the level of HbA_{1c}.

Hydrochlorothiazide

After oral administration of hydrochlorothiazide, diuresis begins within 2 hours, peaks in about 4 hours and lasts about 6 to 12 hours.

Clinical Trials

Candesartan Cilexetil–Hydrochlorothiazide

Of 12 controlled clinical trials involving 4,588 patients, 5 were double-blind, placebo controlled and evaluated the antihypertensive effects of single entities vs the combination. These 5 trials, of 8 to 12 weeks duration, randomized 3,037 hypertensive patients. Doses ranged from 2 to 32 mg candesartan cilexetil and from 6.25 to 25 mg hydrochlorothiazide administered once daily in various combinations.

The combination of candesartan cilexetil-hydrochlorothiazide resulted in placebo-adjusted decreases in sitting systolic and diastolic blood pressures of 14 to 18/8 to 11 mm Hg at doses of 16 mg/12.5 mg and 32 mg/12.5 mg. The combination of candesartan cilexetil and hydrochlorothiazide 32 mg/25 mg resulted in placebo-adjusted decreases in sitting systolic and diastolic blood pressures of 16 to 19/9 to 11 mm Hg. The placebo corrected trough to peak ratio was evaluated in a study of candesartan cilexetil-hydrochlorothiazide 32 mg/12.5 mg and was 88%.

Most of the antihypertensive effect of the combination of candesartan cilexetil and hydrochlorothiazide was seen in 1 to 2 weeks with the full effect observed within 4 weeks. In long-term studies of up to 1 year, the blood pressure lowering effect of the combination was maintained. The antihypertensive effect was similar regardless of age or gender, and overall response to the combination was similar in black and non-black patients. No appreciable changes in heart rate were observed with combination therapy in controlled trials.

INDICATIONS AND USAGE

Candesartan cilexetil and hydrochlorothiazide tablets are indicated for the treatment of hypertension, to lower blood pressure. Lowering blood pressure reduces the risk of fatal and non-fatal cardiovascular events, primarily strokes and myocardial infarctions. These benefits have been seen in controlled trials of antihypertensive drugs from a wide variety of pharmacologic classes including the class to which this drug principally belongs. There are no controlled trials demonstrating risk reduction with

candesartan cilexetil and hydrochlorothiazide.

Control of high blood pressure should be part of comprehensive cardiovascular risk management, including, as appropriate, lipid control, diabetes management, antithrombotic therapy, smoking cessation, exercise, and limited sodium intake. Many patients will require more than one drug to achieve blood pressure goals. For specific advice on goals and management, see published guidelines, such as those of the National High Blood Pressure Education Program's Joint National Committee on Prevention, Detection, Evaluation, and Treatment of High Blood Pressure (JNC).

Numerous antihypertensive drugs, from a variety of pharmacologic classes and with different mechanisms of action, have been shown in randomized controlled trials to reduce cardiovascular morbidity and mortality, and it can be concluded that it is blood pressure reduction, and not some other pharmacologic property of the drugs, that is largely responsible for those benefits. The largest and most consistent cardiovascular outcome benefit has been a reduction in the risk of stroke, but reductions in myocardial infarction and cardiovascular mortality also have been seen regularly.

Elevated systolic or diastolic pressure causes increased cardiovascular risk, and the absolute risk increase per mmHg is greater at higher blood pressures, so that even modest reductions of severe hypertension can provide substantial benefit. Relative risk reduction from blood pressure reduction is similar across populations with varying absolute risk, so the absolute benefit is greater in patients who are at higher risk independent of their hypertension (for example, patients with diabetes or hyperlipidemia), and such patients would be expected to benefit from more aggressive treatment to a lower blood pressure goal.

Some antihypertensive drugs have smaller blood pressure effects (as monotherapy) in black patients, and many antihypertensive drugs have additional approved indications and effects (e.g., on angina, heart failure, or diabetic kidney disease). These considerations may guide selection of therapy.

This fixed dose combination is not indicated for initial therapy (see **DOSAGE AND ADMINISTRATION**).

CONTRAINDICATIONS

Candesartan cilexetil and hydrochlorothiazide tablets are contraindicated in patients who are hypersensitive to candesartan, to hydrochlorothiazide or to other sulfonamide-derived drugs.

Do not coadminister aliskiren with candesartan cilexetil and hydrochlorothiazide tablets in patients with diabetes (see **PRECAUTIONS, Drug Interactions**).

Candesartan cilexetil and hydrochlorothiazide tablets are contraindicated in patients with anuria.

WARNINGS

Fetal Toxicity

Use of drugs that act on the renin-angiotensin system during the second and third trimesters of pregnancy reduces fetal renal function and increases fetal and neonatal morbidity and death. Resulting oligohydramnios can be associated with fetal lung hypoplasia and skeletal deformations. Potential neonatal adverse effects include skull hypoplasia, anuria, hypotension, renal failure, and death. When pregnancy is detected, discontinue candesartan cilexetil and hydrochlorothiazide as soon as possible. These adverse outcomes are usually associated with use of these drugs in the second and third trimester of pregnancy. Most epidemiologic studies examining fetal abnormalities after exposure to antihypertensive use in the first trimester have not distinguished drugs affecting the renin-angiotensin system from other antihypertensive agents. Appropriate management of maternal hypertension during pregnancy is important to optimize outcomes for both mother and fetus.

In the unusual case that there is no appropriate alternative to therapy with drugs affecting the renin-

angiotensin system for a particular patient, apprise the mother of the potential risk to the fetus. Perform serial ultrasound examinations to assess the intra-amniotic environment. If oligohydramnios is observed, discontinue candesartan cilexetil and hydrochlorothiazide, unless it is considered lifesaving for the mother. Fetal testing may be appropriate, based on the week of pregnancy. Patients and physicians should be aware, however, that oligohydramnios may not appear until after the fetus has sustained irreversible injury. Closely observe infants with histories of in utero exposure to candesartan cilexetil and hydrochlorothiazide for hypotension, oliguria, and hyperkalemia. (see **PRECAUTIONS, Pediatric Use.**)

There was no evidence of teratogenicity or other adverse effects on embryo-fetal development when pregnant mice, rats or rabbits were treated orally with candesartan cilexetil alone or in combination with hydrochlorothiazide. For mice, the maximum dose of candesartan cilexetil was 1,000 mg/kg/day (about 150 times the maximum recommended daily human dose [MRHD]¹). For rats, the maximum dose of candesartan cilexetil was 100 mg/kg/day (about 31 times the MRHD¹). For rabbits, the maximum dose of candesartan cilexetil was 1 mg/kg/day (a maternally toxic dose that is about half the MRHD¹). In each of these studies, hydrochlorothiazide was tested at the same dose level (10 mg/kg/day, about 4, 8, and 15 times the MRHD¹ in mouse, rats, and rabbit, respectively). There was no evidence of harm to the rat or mouse fetus or embryo in studies in which hydrochlorothiazide was administered alone to the pregnant rat or mouse at doses of up to 1,000 and 3,000 mg/kg/day, respectively.

Thiazides cross the placental barrier and appear in cord blood. There is a risk of fetal or neonatal jaundice, thrombocytopenia, and possibly other adverse reactions that have occurred in adults.

¹Doses compared on the basis of body surface area. MRHD considered to be 32 mg for candesartan cilexetil and 12.5 mg for hydrochlorothiazide.

Hypotension

Candesartan cilexetil and hydrochlorothiazide can cause symptomatic hypotension. Symptomatic hypotension is most likely to occur in patients who have been volume and/or salt depleted as a result of prolonged diuretic therapy, dietary salt restriction, dialysis, diarrhea, or vomiting. Patients with symptomatic hypotension may require temporarily reducing the dose of candesartan cilexetil and hydrochlorothiazide or volume repletion. Volume and/or salt depletion should be corrected before initiating therapy with candesartan cilexetil and hydrochlorothiazide.

In patients with heart failure, candesartan cilexetil and hydrochlorothiazide may cause excessive hypotension, which may lead to oliguria, azotemia, and (rarely) with acute renal failure and death (see **WARNINGS, Impaired Renal Function**). In such patients, candesartan cilexetil and hydrochlorothiazide therapy should be started under close medical supervision; they should be followed closely for the first 2 weeks of treatment and whenever the dose of candesartan or diuretic is increased.

Impaired Renal Function

Monitor renal function periodically in patients treated with candesartan cilexetil and hydrochlorothiazide. Changes in renal function including acute renal failure can be caused by drugs that inhibit the renin-angiotensin system and by diuretics. Patients whose renal function may depend in part on the activity of the renin-angiotensin system (e.g., patients with renal artery stenosis, chronic kidney disease, severe heart failure, or volume depletion) may be at particular risk of developing oliguria, progressive azotemia, or acute renal failure on candesartan cilexetil and hydrochlorothiazide. Consider withholding or discontinuing therapy in patients who develop a clinically significant decrease in renal function on candesartan cilexetil and hydrochlorothiazide.

Potassium Abnormalities

Drugs that inhibit the renin-angiotensin system can cause hyperkalemia. Hydrochlorothiazide can cause hypokalemia and hyponatremia. Hypomagnesemia can result in hypokalemia which appears difficult to

treat despite potassium repletion. Monitor serum electrolytes periodically.

In clinical trials of various doses of candesartan cilexetil and hydrochlorothiazide, the incidence of hypertensive patients who developed hypokalemia (serum potassium < 3.5 mEq/L) was 2.5% versus 2.1% for placebo; the incidence of hyperkalemia (serum potassium > 5.7 mEq/L) was 0.4% versus 1% for placebo. No patient receiving candesartan cilexetil and hydrochlorothiazide 16 mg/12.5 mg or 32 mg/12.5 mg was discontinued due to increases or decreases in serum potassium.

Acute Myopia and Secondary Angle-Closure Glaucoma

Hydrochlorothiazide, a sulfonamide, can cause an idiosyncratic reaction, resulting in acute transient myopia and acute angle-closure glaucoma. Symptoms include acute onset of decreased visual acuity or ocular pain and typically occur within hours to weeks of drug initiation. Untreated acute angle-closure glaucoma can lead to permanent vision loss. The primary treatment is to discontinue hydrochlorothiazide as rapidly as possible. Prompt medical or surgical treatments may need to be considered if the intraocular pressure remains uncontrolled. Risk factors for developing acute angle-closure glaucoma may include a history of sulfonamide or penicillin allergy.

Hypersensitivity Reaction

Hypersensitivity reactions to hydrochlorothiazide may occur in patients with or without a history of allergy or bronchial asthma, but are more likely in patients with such a history.

PRECAUTIONS

Metabolic Disturbances

Hydrochlorothiazide may alter glucose tolerance and raise serum levels of cholesterol and triglycerides.

Hydrochlorothiazide may raise the serum uric acid level due to reduced clearance of uric acid and may cause or exacerbate hyperuricemia and precipitate gout in susceptible patients.

Thiazides decrease urinary calcium excretion and may cause elevation of serum calcium. Avoid using candesartan cilexetil and hydrochlorothiazide in patients with hypercalcemia.

Systemic Lupus Erythematosus

Thiazide diuretics have been reported to cause exacerbation or activation of systemic lupus erythematosus.

Information for Patients

Pregnancy

Female patients of childbearing age should be told about the consequences of exposure to candesartan cilexetil and hydrochlorothiazide during pregnancy. Discuss treatment options with women planning to become pregnant. Patients should be asked to report pregnancies to their physicians as soon as possible.

Symptomatic Hypotension

Tell patients receiving candesartan cilexetil and hydrochlorothiazide that lightheadedness can occur, especially during the first days of therapy, and that it should be reported to the prescribing physician. Tell patients that if syncope occurs, discontinue candesartan cilexetil and hydrochlorothiazide until the physician has been consulted.

Tell all patients that inadequate fluid intake, excessive perspiration, diarrhea, or vomiting can lead to an excessive fall in blood pressure, with the same consequences of lightheadedness and possible syncope.

Hyperkalemia

Tell patients receiving candesartan cilexetil and hydrochlorothiazide not to use potassium supplements, salt substitutes containing potassium or other drugs that may increase serum potassium levels without consulting the prescribing physician.

Non-melanoma Skin Cancer

Instruct patients taking hydrochlorothiazide to protect skin from the sun and undergo regular skin cancer screening.

Drug Interactions

Because candesartan is not significantly metabolized by the cytochrome P450 system and at therapeutic concentrations has no effects on P450 enzymes, interactions with drugs that inhibit or are metabolized by those enzymes would not be expected.

Interactions common to both Candesartan Cilexetil and Hydrochlorothiazide

Non-Steroidal Anti-Inflammatory Agents including Selective Cyclooxygenase-2 Inhibitors (COX-2 Inhibitors)

In patients who are elderly, volume-depleted (including those on diuretic therapy), or with compromised renal function, coadministration of NSAIDs, including selective COX-2 inhibitors, with angiotensin II receptor antagonists, including candesartan, may result in deterioration of renal function, including possible acute renal failure. These effects are usually reversible. Monitor renal function periodically in patients receiving candesartan and NSAID therapy.

The antihypertensive effect of angiotensin II receptor antagonists, including candesartan may be attenuated by NSAIDs including selective COX-2 inhibitors.

Lithium

Increases in serum lithium concentrations and lithium toxicity have been reported during concomitant administration of lithium with angiotensin II receptor antagonists or hydrochlorothiazide. Monitor serum lithium levels during concomitant use.

Interactions with Candesartan Cilexetil

Dual Blockade of the Renin-Angiotensin System (RAS)

Dual blockade of the RAS with angiotensin receptor blockers, ACE inhibitors, or aliskiren is associated with increased risks of hypotension, hyperkalemia, and changes in renal function (including acute renal failure) compared to monotherapy. Closely monitor blood pressure, renal function and electrolytes in patients on candesartan cilexetil and hydrochlorothiazide and other agents that affect the RAS.

Coadministration of candesartan cilexetil and hydrochlorothiazide with potassium sparing diuretics, potassium supplements, potassium-containing salt substitutes or other drugs that raise serum potassium levels may result in hyperkalemia. Monitor serum potassium in such patients.

Do not coadminister aliskiren with candesartan cilexetil and hydrochlorothiazide in patients with diabetes. Avoid use of aliskiren with candesartan cilexetil and hydrochlorothiazide in patients with renal impairment (GFR < 60 ml/min) (see **CONTRAINDICATIONS**).

Interactions with Hydrochlorothiazide

Alcohol, barbiturates, or narcotics – Potentiation of orthostatic hypotension may occur.

Antidiabetic drugs (oral agents and insulin) – Dosage adjustment of the antidiabetic drug may be required.

Diazoxide – the hyperglycemic effect of diazoxide may be enhanced by thiazides.

Ion Exchange resins – Single doses of either cholestyramine or colestipol resins bind the hydrochlorothiazide and reduce its absorption from the gastrointestinal tract by up to 85% and 43%, respectively. Stagger the dosage of hydrochlorothiazide and ion exchange resins such that hydrochlorothiazide is administered at least 4 hours before or 4 to 6 hours after the administration of

resins.

Skeletal muscle relaxants, nondepolarizing (e.g., tubocurarine) – Possible increased responsiveness to muscle relaxants such as curare derivatives.

Digitalis - Thiazide-induced hypokalemia or hypomagnesemia may predispose to digoxin toxicity.

Noradrenaline – Thiazides may decrease arterial responsiveness to noradrenaline, but not enough to preclude effectiveness of the pressor agent for therapeutic use.

Steroids or Adrenocorticotrophic Hormone – Hypokalemia may develop during concomitant use of steroids or adrenocorticotrophic hormone (ACTH).

Cytotoxic products – Thiazides may reduce the renal excretion of cytotoxic medicinal products (e.g. cyclophosphamide, methotrexate) and potentiate their myelosuppressive effects.

Cyclosporine – Concomitant treatment with cyclosporine may increase the risk of hyperuricemia and gout-type complications.

Carcinogenesis, Mutagenesis, Impairment of Fertility

No carcinogenicity studies have been conducted with the combination of candesartan cilexetil and hydrochlorothiazide. There was no evidence of carcinogenicity when candesartan cilexetil was orally administered to mice and rats for up to 104 weeks at doses up to 100 and 1,000 mg/kg/day, respectively. Rats received the drug by gavage whereas mice received the drug by dietary administration. These (maximally-tolerated) doses of candesartan cilexetil provided systemic exposures to candesartan (AUCs) that were, in mice, approximately 7 times and, in rats, more than 70 times the exposure in man at the maximum recommended daily human dose (32 mg). Two-year feeding studies in mice and rats conducted under the auspices of the National Toxicology Program (NTP) uncovered no evidence of a carcinogenic potential of hydrochlorothiazide in female mice (at doses of up to approximately 600 mg/kg/day) or in male and female rats (at doses of up to approximately 100 mg/kg/day). The NTP, however, found equivocal evidence for hepatocarcinogenicity in male mice.

Candesartan cilexetil or candesartan (the active metabolite), in combination with hydrochlorothiazide, tested positive *in vitro* in the Chinese hamster lung (CHL) chromosomal aberration assay and mouse lymphoma mutagenicity assay. The candesartan cilexetil/hydrochlorothiazide combination tested negative for mutagenicity in bacteria (Ames test), for unscheduled DNA synthesis in rat liver, for chromosomal aberrations in rat bone marrow and for micronuclei in mouse bone marrow.

Both candesartan and its O-deethyl metabolite tested positive for genotoxicity in the *in vitro* CHL chromosomal aberration assay. Neither compound tested positive in the Ames microbial mutagenesis assay or in the *in vitro* mouse lymphoma cell assay. Candesartan (but not its O-deethyl metabolite) was also evaluated *in vivo* in the mouse micronucleus test and *in vitro* in the Chinese hamster ovary (CHO) gene mutation assay, in both cases with negative results. Candesartan cilexetil was evaluated in the Ames test, the *in vitro* mouse lymphoma cell assay, the *in vivo* rat hepatocyte unscheduled DNA synthesis assay and the *in vivo* mouse micronucleus test, in each case with negative results. Candesartan cilexetil was not evaluated in the CHL chromosomal aberration or CHO gene mutation assays.

When hydrochlorothiazide was tested alone, positive results were obtained *in vitro* in the CHO sister chromatid exchange (clastogenicity) and mouse lymphoma cell (mutagenicity) assays and in the *Aspergillus nidulans* non-disjunction assay. Hydrochlorothiazide was not genotoxic *in vitro* in the Ames test for point mutations and the CHO test for chromosomal aberrations, or *in vivo* in assays using mouse germinal cell chromosomes, Chinese hamster bone marrow chromosomes, and the *Drosophila* sex-linked recessive lethal trait gene.

No fertility studies have been conducted with the combination of candesartan cilexetil and hydrochlorothiazide. Fertility and reproductive performance were not affected in studies with male and female rats given oral doses of up to 300 mg candesartan cilexetil/kg/day (83 times the maximum daily human dose of 32 mg on a body surface area basis). Hydrochlorothiazide had no adverse effects on the

fertility of mice and rats of either sex in studies wherein these species were exposed, via their diet, to doses of up to 100 and 4 mg/kg, respectively, prior to conception and throughout gestation.

Nursing Mothers

It is not known whether candesartan is excreted in human milk, but candesartan has been shown to be present in rat milk. Thiazides appear in human milk. Because of the potential for adverse effects on the nursing infant, a decision should be made whether to discontinue nursing or discontinue the drug, taking into account the importance of the drug to the mother.

Pediatric Use

Neonates with a history of in utero exposure to candesartan cilexetil and hydrochlorothiazide

If oliguria or hypotension occurs, direct attention toward support of blood pressure and renal perfusion. Exchange transfusions or dialysis may be required as a means of reversing hypotension and/or substituting for disordered renal function.

Safety and effectiveness in pediatric patients have not been established.

ADVERSE REACTIONS

Candesartan Cilexetil-Hydrochlorothiazide

Candesartan cilexetil and hydrochlorothiazide has been evaluated for safety in more than 2,800 patients treated for hypertension. More than 750 of these patients were studied for at least six months and more than 500 patients were treated for at least one year. Adverse experiences have generally been mild and transient in nature and have only infrequently required discontinuation of therapy. The overall incidence of adverse events reported with candesartan cilexetil and hydrochlorothiazide was comparable to placebo. The overall frequency of adverse experiences was not related to dose, age, gender, or race.

In placebo-controlled trials that included 1,089 patients treated with various combinations of candesartan cilexetil (doses of 2 to 32 mg) and hydrochlorothiazide (doses of 6.25 to 25 mg) and 592 patients treated with placebo, adverse events, whether or not attributed to treatment, occurring in greater than 2% of patients treated with candesartan cilexetil and hydrochlorothiazide and that were more frequent for candesartan cilexetil and hydrochlorothiazide than placebo were:

Respiratory System Disorder

Upper respiratory tract infection (3.6% vs 3%);

Body as a Whole

Back pain (3.3% vs 2.4%); influenza-like symptoms (2.5% vs 1.9%);

Central/Peripheral Nervous System

Dizziness (2.9% vs 1.2%).

Postmarketing Experience

The following have been very rarely reported in postmarketing experience with candesartan cilexetil:

Digestive

Abnormal hepatic function and hepatitis.

Hematologic

Neutropenia, leukopenia, and agranulocytosis.

Immunologic

Angioedema

Metabolic and Nutritional Disorders

Hyperkalemia, hyponatremia.

Respiratory System Disorders

Cough

Skin and Appendages Disorders

Pruritus, rash and urticaria.

Rare reports of rhabdomyolysis have been reported in patients receiving angiotensin II receptor blockers.

Hydrochlorothiazide

Other adverse experiences that have been reported with hydrochlorothiazide, without regard to causality, are listed below:

Gastrointestinal

pancreatitis, jaundice (intrahepatic cholestatic jaundice), sialadenitis, cramping, constipation, gastric irritation, anorexia

Hematologic

aplastic anemia, agranulocytosis, leukopenia, hemolytic anemia, thrombocytopenia

Hypersensitivity

anaphylactic reactions, necrotizing angitis (vasculitis and cutaneous vasculitis), respiratory distress including pneumonitis and pulmonary edema, photosensitivity, urticaria, purpura

Musculoskeletal

muscle spasm

Non-melanoma Skin Cancer

Hydrochlorothiazide is associated with an increased risk of non-melanoma skin cancer. In a study conducted in the Sentinel System, increased risk was predominantly for squamous cell carcinoma (SCC) and in white patients taking large cumulative doses. The increased risk for SCC in the overall population was approximately 1 additional case per 16,000 patients per year, and for white patients taking a cumulative dose of $\geq 50,000$ mg the risk increase was approximately 1 additional SCC case for every 6,700 patients per year.

Skin

erythema multiforme including Stevens-Johnson syndrome, exfoliative dermatitis including toxic epidermal necrolysis, alopecia

Special Senses

transient blurred vision, xanthopsia

Urogenital

impotence

OVERDOSAGE

Candesartan Cilexetil – Hydrochlorothiazide

No lethality was observed in acute toxicity studies in mice, rats and dogs given single oral doses of up to 2,000 mg/kg of candesartan cilexetil or in rats given single oral doses of up to 2,000 mg/kg of candesartan cilexetil in combination with 1,000 mg/kg of hydrochlorothiazide. In mice given single oral doses of the primary metabolite, candesartan, the minimum lethal dose was greater than 1,000 mg/kg but less than 2,000 mg/kg.

Limited data are available in regard to overdosage with candesartan cilexetil in humans. The most likely manifestations of overdosage with candesartan cilexetil would be hypotension, dizziness, and tachycardia; bradycardia could occur from parasympathetic (vagal) stimulation. If symptomatic hypotension should occur, supportive treatment should be initiated. For hydrochlorothiazide, the most common signs and symptoms observed are those caused by electrolyte depletion (hypokalemia, hyponatremia, hypochloremia) and dehydration resulting from excessive diuresis. If digitalis has also been administered, hypokalemia may accentuate cardiac arrhythmias.

Candesartan cannot be removed by hemodialysis. The degree to which hydrochlorothiazide is removed by hemodialysis has not been established.

Treatment

To obtain up-to-date information about the treatment of overdose, consult your Regional Poison Control Center. Telephone numbers of certified poison control centers are listed in the *Physicians' Desk Reference (PDR)*. In managing overdose, consider the possibilities of multiple-drug overdoses, drug-drug interactions, and altered pharmacokinetics in your patient.

DOSAGE AND ADMINISTRATION

The usual recommended starting dose of candesartan cilexetil is 16 mg once daily when it is used as monotherapy in patients who are not volume depleted. Candesartan cilexetil can be administered once or twice daily with total daily doses ranging from 8 mg to 32 mg. Patients requiring further reduction in blood pressure should be titrated to 32 mg. Doses larger than 32 mg do not appear to have a greater blood pressure lowering effect.

Hydrochlorothiazide is effective in doses of 12.5 to 50 mg once daily.

Use in Renal Impairment: Dosing recommendations for candesartan cilexetil and hydrochlorothiazide in patients with creatinine clearance < 30 mg/min cannot be provided (see **SPECIAL POPULATIONS, Renal Insufficiency**).

Use in moderate to severe Hepatic Impairment: Candesartan cilexetil and hydrochlorothiazide is not recommended for initiation because the appropriate starting dose, 8 mg, cannot be given (see **SPECIAL POPULATIONS, Hepatic Insufficiency**).

Replacement Therapy

The combination may be substituted for the titrated components.

Dose Titration by Clinical Effect

A patient whose blood pressure is not controlled on 25 mg of hydrochlorothiazide once daily can expect an incremental effect from candesartan cilexetil and hydrochlorothiazide 16 mg/12.5 mg. A patient whose blood pressure is controlled on 25 mg of hydrochlorothiazide but is experiencing decreases in serum potassium can expect the same or incremental blood pressure effects from candesartan cilexetil and hydrochlorothiazide 16 mg/12.5 mg and serum potassium may improve.

A patient whose blood pressure is not controlled on 32 mg of candesartan cilexetil can expect

incremental blood pressure effects from candesartan cilexetil and hydrochlorothiazide 32 mg/12.5 mg and then 32 mg/25 mg. The maximal antihypertensive effect of any dose of candesartan cilexetil and hydrochlorothiazide can be expected within 4 weeks of initiating that dose.

Candesartan cilexetil and hydrochlorothiazide may be administered with other antihypertensive agents. Candesartan cilexetil and hydrochlorothiazide may be administered with or without food.

HOW SUPPLIED

Candesartan Cilexetil and Hydrochlorothiazide Tablets USP, 16 mg/12.5 mg are white to off-white, oval, biconvex, uncoated tablets with breakline on both sides and engraved on one side with '19' & '4' on either side of breakline and are supplied as follows:

NDC 68382-194-06 in bottle of 30 tablets

NDC 68382-194-16 in bottle of 90 tablets

NDC 68382-194-01 in bottle of 100 tablets

NDC 68382-194-10 in bottle of 1,000 tablets

NDC 68382-194-77 in carton of 100 tablets (10 x 10 unit-dose)

Candesartan Cilexetil and Hydrochlorothiazide Tablets USP, 32 mg/12.5 mg are white to off-white, oval, biconvex, uncoated tablets with breakline on both sides and engraved on one side with '19' & '5' on either side of breakline and are supplied as follows:

NDC 68382-195-06 in bottle of 30 tablets

NDC 68382-195-16 in bottle of 90 tablets

NDC 68382-195-01 in bottle of 100 tablets

NDC 68382-195-10 in bottle of 1,000 tablets

NDC 68382-195-77 in carton of 100 tablets (10 x 10 unit-dose)

Candesartan Cilexetil and Hydrochlorothiazide Tablets USP, 32 mg/25 mg are white to off-white, oval, biconvex, uncoated tablets with breakline on both sides and engraved on one side with '41' & '6' on either side of breakline and are supplied as follows:

NDC 68382-416-06 in bottle of 30 tablets

NDC 68382-416-16 in bottle of 90 tablets

NDC 68382-416-01 in bottle of 100 tablets

NDC 68382-416-10 in bottle of 1,000 tablets

NDC 68382-416-77 in carton of 100 tablets (10 x 10 unit-dose)

Storage:

Store at 20° to 25°C (68° to 77°F) [See USP Controlled Room Temperature].

Dispense in a tight, light-resistant container as defined in the USP.

Call your doctor for medical advice about side effects. You may report side effects to FDA at 1-800-FDA-1088.

Manufactured by:

Cadila Healthcare Ltd.

Ahmedabad, India

Distributed by:

Zydus Pharmaceuticals (USA) Inc.

Pennington, NJ 08534

Rev.: 09/20

PACKAGE LABEL.PRINCIPAL DISPLAY PANEL

NDC 68382-194-10 in bottle of 1000 tablets

Candesartan Cilexetil and Hydrochlorothiazide Tablets USP, 16 mg/12.5 mg

R_x only


1000 tablets

ZYDUS


NDC 68382-194-10

**Candesartan Cilexetil
and Hydrochlorothiazide
Tablets, USP**

16 mg/12.5 mg



1,000 TABLETS
Rx only



Each tablet contains:
Candesartan cilexetil, USP..... 16 mg
Hydrochlorothiazide, USP.....12.5 mg.

Usual Dosage: See package insert for complete prescribing information.

Store at 20° to 25°C (68° to 77°F) [See USP Controlled Room Temperature].

Dispense in a tight, light-resistant container as defined in the USP.

KEEP THIS AND ALL DRUGS OUT OF THE REACH OF CHILDREN.

Manufactured by:
Cadila Healthcare Ltd.
Ahmedabad, India

Distributed by:
Zydus Pharmaceuticals (USA) Inc.,
Pennington, NJ 08534

Rev.: 07/17

N
68382 194 101 7

NDC 68382-195-10 in bottle of 1000 tablets

Candesartan Cilexetil and Hydrochlorothiazide Tablets USP, 32 mg/12.5 mg

R_x only


1000 tablets

ZYDUS

NDC 68382-195-10

**Candesartan Cilexetil
and Hydrochlorothiazide
Tablets, USP**

32 mg/12.5 mg



1,000 TABLETS
Rx only

zydus
pharmaceuticals

Each tablet contains:
Candesartan cilexetil, USP..... 32 mg
Hydrochlorothiazide, USP.....12.5 mg.

Usual Dosage: See package insert for complete prescribing information.

Store at 20° to 25°C (68° to 77°F)
[See USP Controlled Room Temperature].

Dispense in a tight, light-resistant container as defined in the USP.

KEEP THIS AND ALL DRUGS OUT OF THE REACH OF CHILDREN.

Manufactured by:
Cadila Healthcare Ltd.
Ahmedabad, India

Distributed by:
Zydus Pharmaceuticals (USA) Inc.,
Pennington, NJ 08534

Rev: 07/17

NDC 68382-416-10 in bottle of 1000 tablets

Candesartan Cilexetil and Hydrochlorothiazide Tablets USP, 32 mg/25 mg

R_x only

1000 tablets

ZYDUS

NDC 68382-416-10

**Candesartan Cilexetil
and Hydrochlorothiazide
Tablets, USP**

32 mg/25 mg



1,000 TABLETS
Rx only

zydus
pharmaceuticals

Each tablet contains:
Candesartan cilexetil, USP..... 32 mg
Hydrochlorothiazide, USP.....25 mg.

Usual Dosage: See package insert for complete prescribing information.

Store at 20° to 25°C (68° to 77°F)
[See USP Controlled Room Temperature].

Dispense in a tight, light-resistant container as defined in the USP.

KEEP THIS AND ALL DRUGS OUT OF THE REACH OF CHILDREN.

Manufactured by:
Cadila Healthcare Ltd.
Ahmedabad, India

Distributed by:
Zydus Pharmaceuticals (USA) Inc.,
Pennington, NJ 08534

Rev: 07/17

CANDESARTAN CILEXETIL AND HYDROCHLOROTHIAZIDE

candesartan cilexetil and hydrochlorothiazide tablet

Product Information

Product Type	HUMAN PRESCRIPTION DRUG	Item Code (Source)	NDC:68382-194
Route of Administration	ORAL		

Active Ingredient/Active Moiety

Ingredient Name	Basis of Strength	Strength
CANDESARTAN CILEXETIL (UNII: R85M2X0D68) (CANDESARTAN - UNII:S8Q36MD2XX)	CANDESARTAN CILEXETIL	16 mg
HYDROCHLOROTHIAZIDE (UNII: 0J48LPH2TH) (HYDROCHLOROTHIAZIDE - UNII:0J48LPH2TH)	HYDROCHLOROTHIAZIDE	12.5 mg

Inactive Ingredients

Ingredient Name	Strength
CARBOXYMETHYLCELLULOSE CALCIUM (UNII: UTY7PDF93L)	
STARCH, CORN (UNII: O8232NY3SJ)	
CAPRYLIC/CAPRIC MONO/DI-GLYCERIDES (UNII: U72Q2I8C85)	
LACTOSE MONOHYDRATE (UNII: EWQ57Q8I5X)	
MAGNESIUM STEARATE (UNII: 70097M6I30)	
HYDROXYPROPYL CELLULOSE (110000 WAMW) (UNII: 5Y0974F5PW)	

Product Characteristics

Color	WHITE (WHITE TO OFF-WHITE)	Score	2 pieces
Shape	OVAL (OVAL)	Size	10mm
Flavor		Imprint Code	19;4
Contains			

Packaging

#	Item Code	Package Description	Marketing Start Date	Marketing End Date
1	NDC:68382-194-06	30 in 1 BOTTLE; Type 0: Not a Combination Product	04/14/2018	
2	NDC:68382-194-16	90 in 1 BOTTLE; Type 0: Not a Combination Product	04/14/2018	
3	NDC:68382-194-10	1000 in 1 BOTTLE; Type 0: Not a Combination Product	04/14/2018	
4	NDC:68382-194-01	100 in 1 BOTTLE; Type 0: Not a Combination Product	04/14/2018	
5	NDC:68382-194-77	10 in 1 CARTON	04/14/2018	
5		10 in 1 BLISTER PACK; Type 0: Not a Combination Product		

Marketing Information

Marketing Category	Application Number or Monograph Citation	Marketing Start Date	Marketing End Date
ANDA	ANDA203466	04/14/2018	

CANDESARTAN CILEXETIL AND HYDROCHLOROTHIAZIDE

candesartan cilexetil and hydrochlorothiazide tablet

Product Information

Product Type	HUMAN PRESCRIPTION DRUG	Item Code (Source)	NDC:68382-195
Route of Administration	ORAL		

Active Ingredient/Active Moiety

Ingredient Name	Basis of Strength	Strength
CANDESARTAN CILEXETIL (UNII: R85M2X0D68) (CANDESARTAN - UNII:S8Q36MD2XX)	CANDESARTAN CILEXETIL	32 mg
HYDROCHLOROTHIAZIDE (UNII: 0J48LPH2TH) (HYDROCHLOROTHIAZIDE - UNII:0J48LPH2TH)	HYDROCHLOROTHIAZIDE	12.5 mg

Inactive Ingredients

Ingredient Name	Strength
CARBOXYMETHYLCELLULOSE CALCIUM (UNII: UTY7PDF93L)	
STARCH, CORN (UNII: O8232NY3SJ)	
CAPRYLIC/CAPRIC MONO/DI-GLYCERIDES (UNII: U72Q2I8C85)	
LACTOSE MONOHYDRATE (UNII: EWQ57Q8I5X)	
MAGNESIUM STEARATE (UNII: 70097M6I30)	
HYDROXYPROPYL CELLULOSE (110000 WAMW) (UNII: 5Y0974F5PW)	

Product Characteristics

Color	WHITE (WHITE TO OFF-WHITE)	Score	2 pieces
Shape	OVAL (OVAL)	Size	11mm
Flavor		Imprint Code	19;5
Contains			

Packaging

#	Item Code	Package Description	Marketing Start Date	Marketing End Date
1	NDC:68382-195-77	10 in 1 CARTON	04/14/2018	
1		10 in 1 BLISTER PACK; Type 0: Not a Combination Product		
2	NDC:68382-195-10	1000 in 1 BOTTLE; Type 0: Not a Combination Product	04/14/2018	
3	NDC:68382-195-01	100 in 1 BOTTLE; Type 0: Not a Combination Product	04/14/2018	
4	NDC:68382-195-16	90 in 1 BOTTLE; Type 0: Not a Combination Product	04/14/2018	
5	NDC:68382-195-06	30 in 1 BOTTLE; Type 0: Not a Combination Product	04/14/2018	

Marketing Information

Marketing Category	Application Number or Monograph Citation	Marketing Start Date	Marketing End Date
ANDA	ANDA203466	04/14/2018	

CANDESARTAN CILEXETIL AND HYDROCHLOROTHIAZIDE

candesartan cilexetil and hydrochlorothiazide tablet

Product Information

Product Type	HUMAN PRESCRIPTION DRUG	Item Code (Source)	NDC:68382-416
Route of Administration	ORAL		

Active Ingredient/Active Moiety

Ingredient Name	Basis of Strength	Strength
CANDESARTAN CILEXETIL (UNII: R85M2X0D68) (CANDESARTAN - UNII:S8Q36MD2XX)	CANDESARTAN CILEXETIL	32 mg
HYDROCHLOROTHIAZIDE (UNII: 0J48LPH2TH) (HYDROCHLOROTHIAZIDE - UNII:0J48LPH2TH)	HYDROCHLOROTHIAZIDE	25 mg

Inactive Ingredients

Ingredient Name	Strength
CARBOXYMETHYLCELLULOSE CALCIUM (UNII: UTY7PDF93L)	
STARCH, CORN (UNII: O8232NY3SJ)	
CAPRYLIC/CAPRIC MONO/DI-GLYCERIDES (UNII: U72Q2I8C85)	
LACTOSE MONOHYDRATE (UNII: EWQ57Q8I5X)	
MAGNESIUM STEARATE (UNII: 70097M6I30)	
HYDROXYPROPYL CELLULOSE (110000 WAMW) (UNII: 5Y0974F5PW)	

Product Characteristics

Color	WHITE (WHITE TO OFF-WHITE)	Score	2 pieces
Shape	OVAL (OVAL)	Size	11mm
Flavor		Imprint Code	41;6
Contains			

Packaging

#	Item Code	Package Description	Marketing Start Date	Marketing End Date
1	NDC:68382-416-06	30 in 1 BOTTLE; Type 0: Not a Combination Product	04/14/2018	
2	NDC:68382-416-16	90 in 1 BOTTLE; Type 0: Not a Combination Product	04/14/2018	
3	NDC:68382-416-01	100 in 1 BOTTLE; Type 0: Not a Combination Product	04/14/2018	
4	NDC:68382-416-10	1000 in 1 BOTTLE; Type 0: Not a Combination Product	04/14/2018	
5	NDC:68382-416-77	10 in 1 CARTON	04/14/2018	
5		10 in 1 BLISTER PACK; Type 0: Not a Combination Product		

Marketing Information

Marketing Category	Application Number or Monograph Citation	Marketing Start Date	Marketing End Date
ANDA	ANDA203466	04/14/2018	

Labeler - Zydus Pharmaceuticals (USA) Inc. (156861945)

Registrant - Zydus Pharmaceuticals (USA) Inc. (156861945)

Establishment

Name	Address	ID/FEI	Business Operations
Cadila Healthcare Limited		918596198	ANALYSIS(68382-194, 68382-195, 68382-416) , MANUFACTURE(68382-194, 68382-195, 68382-416)

Revised: 9/2020

Zydus Pharmaceuticals (USA) Inc.