

# FILSUVEZ- birch triterpenes gel

## Chiesi USA, Inc.

-----

### HIGHLIGHTS OF PRESCRIBING INFORMATION

These highlights do not include all the information needed to use FILSUVEZ safely and effectively. See full prescribing information for FILSUVEZ.

**FILSUVEZ® (birch triterpenes) topical gel**  
**Initial U.S. Approval: 2023**

### INDICATIONS AND USAGE

FILSUVEZ topical gel is indicated for the treatment of wounds associated with dystrophic and junctional epidermolysis bullosa in adult and pediatric patients 6 months of age and older. (1)

### DOSAGE AND ADMINISTRATION

- Apply a 1 mm layer of FILSUVEZ to the affected wound surface and cover with wound dressing or apply FILSUVEZ directly to dressing so that the topical gel is in direct contact with the wound. Do not rub in the topical gel. (2)
- Apply FILSUVEZ at wound dressing changes until the wound is healed. (2)
- Each tube of FILSUVEZ is for one-time use only. (2)
- For topical use; not for oral, intravaginal, intra-anal, or ophthalmic use. (2)

### DOSAGE FORMS AND STRENGTHS

Topical gel: 10% birch triterpenes w/w supplied in 25 mL sterile tubes (3)

### CONTRAINDICATIONS

None (4)

### WARNINGS AND PRECAUTIONS

- *Hypersensitivity Reactions*: If signs or symptoms of hypersensitivity occur, discontinue use immediately and initiate appropriate therapy. (5.1)

### ADVERSE REACTIONS

The most common (incidence  $\geq 2\%$ ) adverse reactions are application site reactions. (6.1)

To report SUSPECTED ADVERSE REACTIONS, contact Chiesi USA Inc. at 1-888-661-9260 or FDA at 1-800-FDA-1088 or [www.fda.gov/medwatch](http://www.fda.gov/medwatch).

See 17 for PATIENT COUNSELING INFORMATION and FDA-approved patient labeling.

Revised: 5/2024

---

## FULL PRESCRIBING INFORMATION: CONTENTS\*

### 1 INDICATIONS AND USAGE

### 2 DOSAGE AND ADMINISTRATION

### 3 DOSAGE FORMS AND STRENGTHS

### 4 CONTRAINDICATIONS

### 5 WARNINGS AND PRECAUTIONS

5.1 Hypersensitivity Reactions

### 6 ADVERSE REACTIONS

6.1 Clinical Trials Experience

### 8 USE IN SPECIFIC POPULATIONS

8.1 Pregnancy

8.2 Lactation

8.4 Pediatric Use

8.5 Geriatric Use

## **11 DESCRIPTION**

## **12 CLINICAL PHARMACOLOGY**

12.1 Mechanism of Action

12.2 Pharmacodynamics

12.3 Pharmacokinetics

## **13 NONCLINICAL TOXICOLOGY**

13.1 Carcinogenesis, Mutagenesis, Impairment of Fertility

## **14 CLINICAL STUDIES**

## **16 HOW SUPPLIED/STORAGE AND HANDLING**

## **17 PATIENT COUNSELING INFORMATION**

\* Sections or subsections omitted from the full prescribing information are not listed.

---

## **FULL PRESCRIBING INFORMATION**

### **1 INDICATIONS AND USAGE**

FILSUVEZ is indicated for the treatment of wounds associated with dystrophic and junctional epidermolysis bullosa (EB) in adult and pediatric patients 6 months of age and older.

### **2 DOSAGE AND ADMINISTRATION**

- Wash hands before and after applying FILSUVEZ or wear gloves for application.
- Apply a 1 mm layer of FILSUVEZ to the affected wound surface only. Do not rub in the gel. Cover the wound with a sterile non-adhesive wound dressing. Alternatively, apply FILSUVEZ directly to the dressing so that the topical gel is in direct contact with the wound.
- Apply FILSUVEZ to cleansed wounds with wound dressing changes until the wound is healed.
- If a FILSUVEZ-treated wound becomes infected, discontinue treatment to that wound until the infection has resolved.
- Each tube of FILSUVEZ is for one-time use only. Once the tube is opened, use the product immediately. Discard the tube after use in household trash or through a drug take back site, if available.
- Avoid contact of FILSUVEZ with eyes and mucous membranes (e.g., mouth, vagina, anus). In case of accidental contact, irrigate the area with water.
- FILSUVEZ is for topical use only. Not for use on mucous membranes (oral, intravaginal, or intra-anal). Not for ophthalmic use.

### **3 DOSAGE FORMS AND STRENGTHS**

Topical gel: 10% birch triterpenes w/w in a colorless to slightly yellowish, opalescent, non-aqueous gel supplied in 25 mL sterile tubes.

## 4 CONTRAINDICATIONS

None.

## 5 WARNINGS AND PRECAUTIONS

### 5.1 Hypersensitivity Reactions

Local hypersensitivity and skin reactions have been reported in patients treated with FILSUEZ, including urticaria and dermatitis.

If signs and symptoms of local or systemic hypersensitivity occur, discontinue FILSUEZ immediately and initiate appropriate therapy.

## 6 ADVERSE REACTIONS

The following clinically significant adverse reactions are discussed elsewhere in the labeling:

- Hypersensitivity Reactions [see *Warnings and Precautions (5.1)*]

### 6.1 Clinical Trials Experience

Because clinical trials are conducted under widely varying conditions, adverse reaction rates observed in the clinical trials of a drug cannot be directly compared to rates in the clinical trials of another drug and may not reflect the rates observed in practice.

The safety of FILSUEZ was evaluated in EASE, a randomized, double-blind, multicenter, placebo-controlled trial in 223 adult and pediatric subjects with inherited EB. During the double-blind phase of EASE, subjects received topical treatment with either FILSUEZ or a placebo gel on partial-thickness wounds every 1 to 4 days for a total of 90 days. Treated wounds were covered with non-adhesive dressings. Following completion of the double-blind phase, all subjects received FILSUEZ for a total of 24 months during the open-label phase [see *Clinical Studies (14)*].

Table 1 presents adverse reactions that occurred in at least 2% of subjects treated with FILSUEZ during the 90-day double-blind phase of EASE and at a greater frequency than in the placebo gel group.

**Table 1: Number (%) of Subjects with Adverse Reactions Occurring in  $\geq$  2%**

<b>Adverse Reaction</b>	<b>FILSUEZ (N=109) n (%)</b>	<b>Placebo Gel (N=114) n (%)</b>
Application site reaction*	8 (7.3)	7 (6.1)

\* Includes: application site pruritus, administration site pain, administration site pruritus.

Squamous cell carcinoma of the skin (SCC) was reported as an adverse event in the double-blind and open-label periods of EASE. Four subjects with recessive dystrophic EB each reported one SCC: a 20-year-old male on day 1 of the double-blind period; three

female subjects ages 22, 46, and 49 years during the open-label period. Two of the four subjects had applied FILSUVEZ to the area which developed the SCC.

## **8 USE IN SPECIFIC POPULATIONS**

### **8.1 Pregnancy**

#### Risk Summary

There are no available data with use of FILSUVEZ in pregnant women to evaluate for drug-associated risk of major birth defects, miscarriage or adverse maternal or fetal outcomes. In an animal reproduction study, oral administration of birch triterpenes to pregnant rats during the period of organogenesis had no effects on reproductive or fetal parameters (*see Data*).

Systemic absorption of FILSUVEZ in humans is low following topical administration of FILSUVEZ, and maternal use is not expected to result in fetal exposure to the drug [*see Pharmacokinetics (12.3)*].

The background risk of major birth defects and miscarriage for the indicated population is unknown. In the U.S. general population, the estimated background risk of major birth defects and miscarriage in clinically recognized pregnancies is 2% to 4% and 15% to 20%, respectively.

#### Data

##### *Animal Data*

In an embryofetal development study, birch triterpenes were orally administered to pregnant rats at doses of 10, 30, or 100 mg/kg/day during the period of organogenesis. Birch triterpenes did not cause maternal toxicity or fetal malformations at doses up to 100 mg/kg/day. In a prenatal and postnatal development study, birch triterpenes were orally administered to pregnant rats at doses of 10, 30, or 100 mg/kg/day from gestation day 5 through lactation day 20. Birch triterpenes did not affect development at doses up to 100 mg/kg/day. The available data do not support relevant comparisons of systemic birch triterpenes exposures achieved in the animal studies to exposures observed in humans after topical use of FILSUVEZ.

### **8.2 Lactation**

#### Risk Summary

There are no data on the presence of birch triterpenes or metabolites in human milk, the effects on the breastfed infant, or the effect on milk production.

No effects on the breastfed infant are anticipated since the systemic exposure of the breastfeeding woman to FILSUVEZ would be low. Therefore, the developmental and health benefits of breastfeeding should be considered along with the mother's clinical need for FILSUVEZ and any potential adverse effects on the breastfed infant from FILSUVEZ or from the underlying maternal condition [*see Pharmacokinetics (12.3)*].

### **8.4 Pediatric Use**

The safety and effectiveness of FILSUVEZ for the treatment of wounds associated with

dystrophic and junctional EB have been established in pediatric patients 6 months of age and older. Use of FILSUEZ in this age group is supported by evidence from a single randomized, placebo-controlled trial in 156 subjects 6 months to 17 years of age [see *Clinical Studies (14)*].

The safety and effectiveness of FILSUEZ have not been established in pediatric patients younger than 6 months of age.

## 8.5 Geriatric Use

Clinical studies of FILSUEZ did not include sufficient numbers of EB subjects 65 years of age and older to determine whether they respond differently from younger subjects.

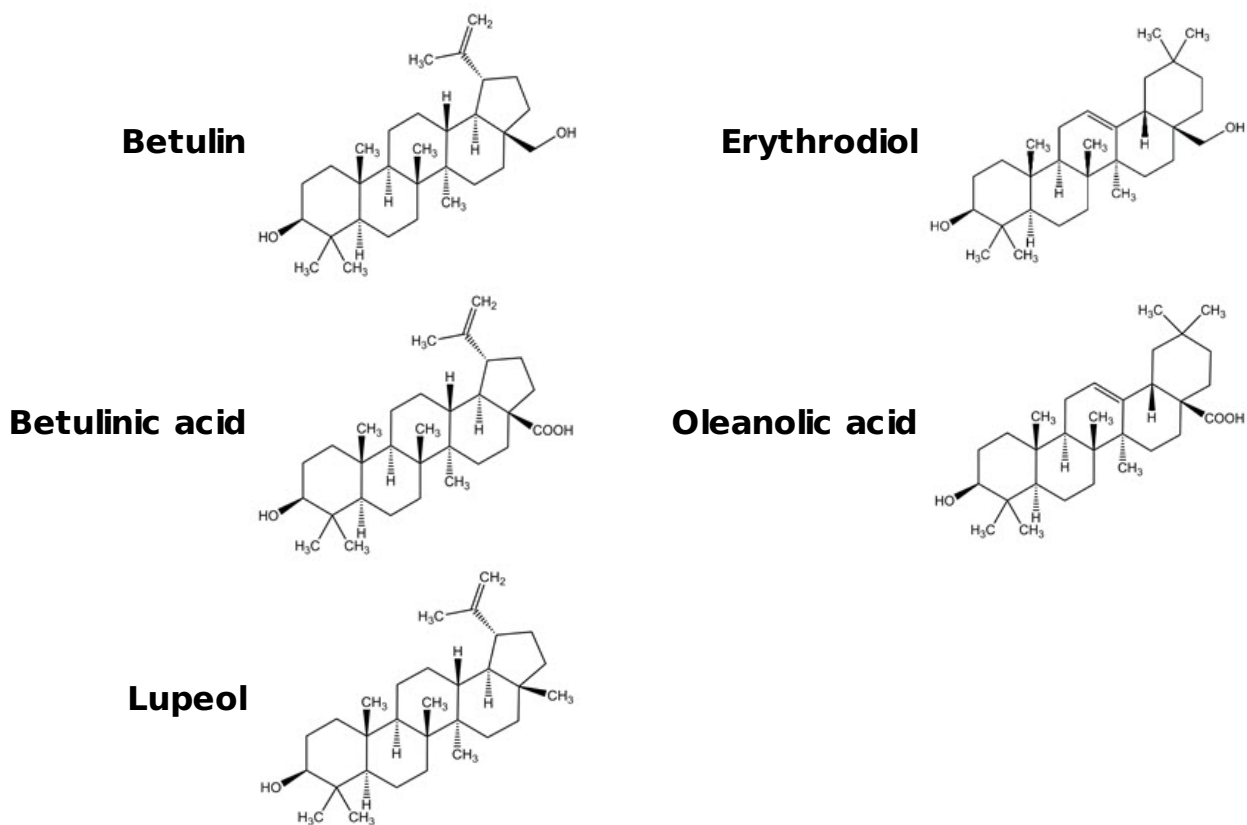
## 11 DESCRIPTION

FILSUEZ (birch triterpenes) topical gel is a sterile botanical drug product for topical use and contains birch triterpenes in an oil base. FILSUEZ is a colorless to slightly yellowish, opalescent, non-aqueous gel.

Birch triterpenes is a botanical drug substance composed of a mixture of pentacyclic triterpenes. The botanical drug substance is a dry extract, refined, from birch bark from *Betula pendula* Roth, *Betula pubescens* Ehrh., as well as hybrids of both species, quantified to 72-88% (w/w) betulin, 2.4-5.7% (w/w) lupeol, 2.6-4.2% (w/w) betulinic acid, 0.5-1.2% (w/w) erythrodiol, 0.3-0.8% (w/w) oleanolic acid.

The structural formulae of the main triterpene constituents are shown in Figure 1.

**Figure 1: Structure of Triterpene Constituents**



Each gram of FILSUEZ topical gel 10% (w/w) contains 100 mg of birch triterpenes in an oil base of refined sunflower oil. FILSUEZ contains no additional excipients.

## **12 CLINICAL PHARMACOLOGY**

### **12.1 Mechanism of Action**

The mechanism of action of FILSUEZ in the treatment of wounds associated with epidermolysis bullosa is unknown.

### **12.2 Pharmacodynamics**

Pharmacodynamics of FILSUEZ are unknown.

### **12.3 Pharmacokinetics**

#### Absorption

Systemic exposure to betulin was assessed in the 66 evaluable subjects aged  $\geq 13$  months to  $\leq 52$  years with dystrophic and junctional EB in the clinical trial EASE using venous blood sampling and validated liquid chromatography with tandem mass spectrometry assay.

Following treatment with FILSUEZ once daily (n=27), every 2 (n=33) or 3 days (n=4) or once weekly (n=2) for 90 days with a mean treatment area of 12% body surface area or affected wound surface area of 0.11 m<sup>2</sup> at baseline, betulin blood concentrations in 68% subjects (n=45) were below the lower limit of quantification of 10 ng/mL on Day 90. The highest concentrations of betulin in adult and pediatric subjects with a median age of 10 years (range:  $\geq 13$  months to  $< 18$  years) were 33 ng/mL and 207 ng/mL, respectively, which were observed on Day 90.

#### Distribution

Plasma protein binding of betulin in vitro is  $> 99.9$  %.

#### Metabolism

The in vitro study indicated that incubation of 1  $\mu\text{mol/L}$  betulin with human hepatocytes generated several unidentified phase I and/or phase II metabolites. In vitro, betulin was mainly metabolized by cytochrome P450 (CYP)3A. The relative contribution of CYP3A and phase II metabolizing enzymes in the overall metabolism of betulin has not been fully characterized.

#### Drug Interaction Studies

##### *Clinical Studies*

No clinical studies evaluating the drug interaction potential of FILSUEZ have been conducted.

##### *In Vitro Studies*

*CYP Enzymes:* Betulin inhibited CYP3A and CYP2C8 with an IC<sub>50</sub> value of  $> 0.17$   $\mu\text{mol/L}$  (75 ng/mL). Betulin up to 10  $\mu\text{mol/L}$  (4427 ng/mL) did not induce CYP 1A2, 2B6, or 3A4. These findings suggest that FILSUEZ has no clinically meaningful effect on the PK of drugs metabolized by CYP 1A2, 2B6, 2C8, 2C9, 2C19, 2D6, or 3A.

## 13 NONCLINICAL TOXICOLOGY

### 13.1 Carcinogenesis, Mutagenesis, Impairment of Fertility

No carcinogenicity studies have been performed with FILSUVEZ or birch triterpenes.

Birch triterpenes were not genotoxic in the in vitro bacterial mutagenicity (Ames) assay, an in vitro mammalian chromosome aberration assay using human peripheral lymphocytes, or at doses up to 500 mg/kg in an in vivo mouse micronucleus assay.

In a fertility and early embryonic development study in rats, birch triterpenes were orally administered at doses of 10, 30, or 100 mg/kg/day from 2 weeks before mating through gestation day 6. Birch triterpenes had no effects on mating or fertility in male or female rats at doses up to 100 mg/kg/day.

## 14 CLINICAL STUDIES

The efficacy of FILSUVEZ for the treatment of partial-thickness wounds associated with inherited EB was evaluated in a randomized, double-blind, placebo-controlled trial in adults and pediatric subjects 6 months of age and older (EASE; NCT03068780) with dystrophic EB (DEB) and junctional EB (JEB). Subjects were randomized 1:1 to receive FILSUVEZ (n=109) or placebo topical gel (n=114) and instructed to apply approximately 1 mm (0.04 inch) of the investigational product to all their wounds at each dressing change (every 1 to 4 days) for 90 days. At randomization, 1 wound was selected by the investigator as the target wound for the evaluation of the primary efficacy endpoint. The target wound was defined as a partial-thickness wound of 10-50 cm<sup>2</sup> in surface area and present for 21 days to 9 months prior to screening.

Of the 223 subjects randomized, the median age was 12 years (range: 6 months to 81 years), 70% were under 18 years of age, and 60% were male and 40% were female. Eighty three (83)% of subjects were White, 5% were Asian, 1% were Black or African American, and 10% were other races or did not have race recorded. For ethnicity, 35% identified as Hispanic or Latino and 65% identified as not Hispanic or Latino. Of these 223 subjects, 195 had DEB, of which 175 subjects had recessive DEB (RDEB) and 20 had dominant DEB (DDEB); in addition, there were 26 subjects with JEB and 2 subjects with EB simplex.

The primary endpoint was the proportion of subjects with first complete closure of the target wound by Day 45 of the 90-day double-blind phase of the study, based on clinical assessment by the investigator. Efficacy results from EASE are presented in Table 2.

**Table 2: Efficacy Results for the Treatment of Partial-Thickness Wounds in Subjects with EB in Trial EASE (Full Analysis Set)**

<b>Efficacy Parameter</b>	<b>FILSUVEZ N=109</b>	<b>Placebo Gel N=114</b>	<b>95% CI for the Treatment Difference</b>
<b>Proportion of subjects</b>			

<b>with first complete closure of target wound within 45 days</b>	41.3%	28.9%	(0.8, 25.6)
<b>By EB subtype*</b>			
RDEB (n=175)	44.0%	26.2%	(3.9, 31.6)
DDEB (n=20)	50.0%	50.0%	(-47.8, 47.8)
JEB (n=26)	18.2%	26.7%	(-40.4, 23.5)
<b>Proportion of subjects with first complete closure of target wound within 90 days</b>	50.5%	43.9%	(-6.2, 20.0)

CI=Confidence interval

\* Two subjects with EB simplex are not included

## 16 HOW SUPPLIED/STORAGE AND HANDLING

FILSUVEZ (birch triterpenes) topical gel, 10% (w/w) is a colorless to slightly yellowish, opalescent, non-aqueous gel and is supplied in 25 mL white aluminum tubes containing 23.4 grams of gel per tube (NDC 10122-310-01).

Each sterile tube is for one-time use only. Once opened, the product should be used immediately and discarded after use.

Store at 20°C to 25°C (68° F to 77°F); excursions permitted to 15° to 30°C (59° to 86°F) [see USP Controlled Room Temperature].

Do not freeze.

Do not use beyond the expiration date.

## 17 PATIENT COUNSELING INFORMATION

Advise the patient to read the FDA-approved patient labeling (*Patient Information and Instructions for Use*).

### Administration Instructions

Advise patients (and/or their caregivers or guardians) of the following [see *Dosage and Administration (2)*]:

- Wash hands before and after applying FILSUVEZ or wear gloves for application.
- Apply a 1 mm layer of FILSUVEZ to the affected wound surface. Do not rub in the gel. Cover the wound with a sterile non-adhesive wound dressing. Alternatively, apply a generous layer of FILSUVEZ directly to the dressing so that the gel is in direct contact with the wound.
- Apply FILSUVEZ to cleansed wounds at dressing changes until the wound is healed.
- FILSUVEZ is for topical use only. FILSUVEZ is not for ophthalmic use and should not be applied to mucous membranes. In case of accidental contact, irrigate eyes with water.
- The sterile tube of topical gel is for one-time use only. Once the tube is opened, use the product immediately. Discard the tube after use, even if there is some topical gel left.



## Hypersensitivity Reactions

- Inform patients that local hypersensitivity and skin reactions, including urticaria and dermatitis, have been reported in patients treated with FILSUVEZ. If signs and symptoms of local hypersensitivity or skin reactions occur, instruct patients to discontinue FILSUVEZ immediately and contact their healthcare provider [see *Warnings and Precautions (5.1)*].

## **Manufactured by:**

Lichtenheldt GmbH  
Pharmazeutische Fabrik  
Werk 1  
Industriestr. 7-11  
23812 Wahlstedt  
Germany

<p style="text-align: center;"><b>PATIENT INFORMATION</b> <b>FILSUVEZ® (fill-sue-vez)</b> <b>(birch triterpenes) topical gel</b></p>
--

<p><b>Important information: FILSUVEZ is for use on the skin (topical use) only.</b> Do not use FILSUVEZ in your eyes, mouth, vagina or anus.</p>
---

<p><b>What is FILSUVEZ?</b></p>
---------------------------------

<p>FILSUVEZ is a prescription medicine used on the skin to treat wounds that may happen with dystrophic and junctional epidermolysis bullosa (EB) in adults and children 6 months of age and older.</p>
---

<p>It is not known if FILSUVEZ is safe and effective in children younger than 6 months of age.</p>
--

<p><b>Do not use FILSUVEZ if</b> you are allergic to any of its ingredients. See the end of this leaflet for a complete list of ingredients in FILSUVEZ.</p>
--

<p><b>Before using FILSUVEZ, tell your healthcare provider about all of your medical conditions, including if you:</b></p>
--

- |   |
|---|
| <ul style="list-style-type: none"><li>• are pregnant or plan to become pregnant. It is not known if FILSUVEZ will harm your unborn baby.</li><li>• are breastfeeding or plan to breastfeed. It is not known if FILSUVEZ passes into your breast milk.</li></ul> |
|---|

<p><b>Tell your healthcare provider about all the medicines you take,</b> including prescription and over-the-counter medicines, vitamins and herbal supplements.</p>
---

<p><b>How should I use FILSUVEZ?</b></p>
--

<p><b>See the detailed "Instructions for Use" that comes with FILSUVEZ for information on how to apply FILSUVEZ.</b></p>
--

- |  |
|--|
| <ul style="list-style-type: none"><li>• Use FILSUVEZ exactly as your healthcare provider tells you to use it.</li><li>• Clean wounds before applying FILSUVEZ as instructed by your healthcare provider.</li><li>• Wash hands before applying FILSUVEZ or wear gloves.</li><li>• Apply FILSUVEZ at each dressing change until the wound is healed.</li><li>• Check the expiration date on the FILSUVEZ tube. Do not use FILSUVEZ if the expiration date has passed. Call your pharmacist or healthcare provider for instructions.</li><li>• The tube of FILSUVEZ is for one-time use only. After the tube has been opened,</li></ul> |
|--|

apply the gel right away. Throw away any remaining gel and the tube after use.

- Wash hands after applying FILSUVEZ and caring for wounds.
- **Do not** use around or get FILSUVEZ in the eyes, or mucous membrane areas examples are mouth, vagina or anus.
- If you get FILSUVEZ in your eyes or mucous membrane area, rinse with clean water right away. Contact your healthcare provider if you have any discomfort.
- If the wounds you are treating with FILSUVEZ become infected, **stop treatment** and contact your healthcare provider. Signs or symptoms of infection may include the wound becoming red, warm, swollen, painful or drains yellow or greenish fluid (pus).

### **What are the possible side effects of FILSUVEZ?**

#### **FILSUVEZ may cause serious side effects including:**

- **Allergic reactions.** Allergic reactions and skin reactions to FILSUVEZ may include the following symptoms: red itchy bumps (hives), skin rash, redness or itching. If you get any of these symptoms, stop using FILSUVEZ right away and call your healthcare provider.

The most common side effect of FILSUVEZ is application site reactions, such as pain and itchy skin.

These are not all the possible side effects of FILSUVEZ.

Call your doctor for medical advice about side effects. You may report side effects to FDA at 1-800-FDA-1088.

### **How should I store FILSUVEZ?**

- Store FILSUVEZ at room temperature between 68°F to 77°F (20°C to 25°C). Do not freeze.
- FILSUVEZ is for one-time use only. Throw away (dispose of) any remaining FILSUVEZ and the tube right away after use in household trash or through a drug take-back option, if available. Go to [www.fda.gov/drugdisposal](http://www.fda.gov/drugdisposal) for more information on drug disposal.

### **Keep FILSUVEZ and all medicines out of the reach of children.**

#### **General information about the safe and effective use of FILSUVEZ**

Medicines are sometimes prescribed for purposes other than those listed in a Patient Information leaflet. Do not use FILSUVEZ for a condition for which it was not prescribed. Do not give FILSUVEZ to other people, even if they have the same symptoms that you have. It may harm them. You can ask your pharmacist or healthcare provider for information about FILSUVEZ that is written for healthcare professionals.

### **What are the ingredients in FILSUVEZ?**

**Active ingredient:** birch triterpenes

**Inactive ingredients:** refined sunflower oil

Manufactured by: Lichtenheldt GmbH, Pharmazeutische Fabrik, Werk 1, Industriestr. 7-11, 23812 Wahlstedt, Germany.

For more information, call 1-855-303-2347 or go to [www.filsuvez.com](http://www.filsuvez.com)

This Patient Information has been approved by the U.S. Food and Drug Administration

Issued:  
12/2023

## **INSTRUCTIONS FOR USE**

**FILSUVEZ® [fill-sue-vez]  
(birch triterpenes)  
topical gel**

**Chiesi**

**Important information: FILSUVEZ is for use on the skin (topical use) only.** Do not use FILSUVEZ in or around your eyes or mucous membranes (for example, the mouth, vagina, or anus).

This Instructions for Use contains information on how to apply FILSUVEZ. Read this Instructions for Use before you start using FILSUVEZ. Ask your healthcare provider if you have any questions.



**Important Information You Need to Know Before Applying Filsuvez**

- Use FILSUVEZ exactly as your healthcare provider tells you to use it.
- Apply FILSUVEZ directly to the wound or to the dressing surface that will be in contact with the wound.
- Clean wounds before applying FILSUVEZ as instructed by your healthcare provider.
- Apply FILSUVEZ with a clean or gloved hand.
- Apply FILSUVEZ at each dressing change until the wound is completely healed.
- **Do not** get FILSUVEZ in or apply around the eyes, or mucous membranes (For example, mouth, vagina, or anus). If you get FILSUVEZ in your eyes or mucous membranes, rinse with clean water right away. Contact your healthcare provider if you have any discomfort.
- Wash hands after applying FILSUVEZ and caring for wounds.
- The tube of FILSUVEZ is for one-time use only. After the tube has been opened, apply the FILSUVEZ gel right away. Throw away any remaining gel and the tube after use.
- Check the expiration date on the FILSUVEZ tube. Do not use FILSUVEZ if the expiration date has passed. Call your pharmacist or healthcare provider for instructions.

**Gather your supplies**

- a new tube of FILSUVEZ
- gloves (if using)
- sterile, non-adhesive dressing

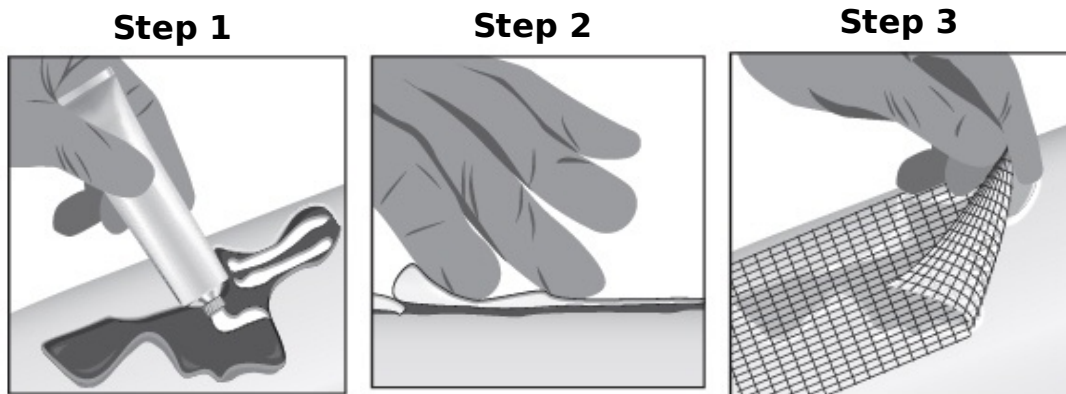
**Applying Filsuvez**

- Wash your hands with soap and water or wear gloves.

- Open a new tube of FILSUVEZ. Apply the gel right away.
- You can apply FILSUVEZ in 2 ways, either directly to the wound **or** to the non-adhesive dressing surface that will be in contact with the wound.

**Option 1: Apply FILSUVEZ directly to wound.**

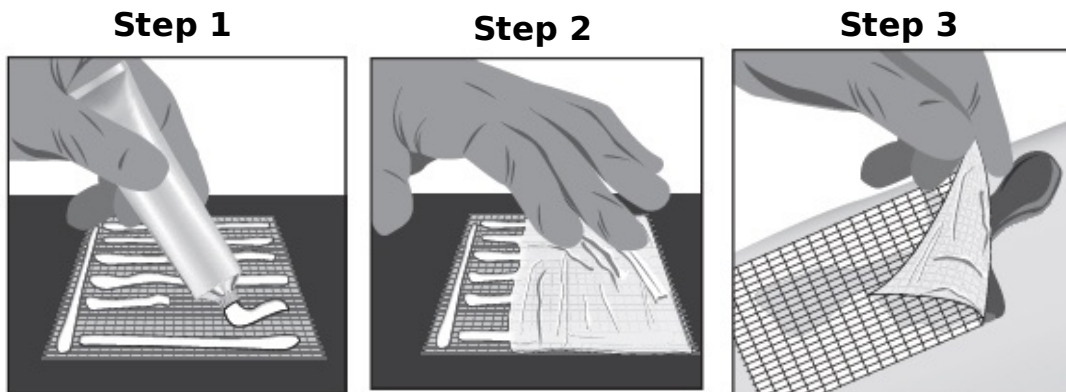
- Apply a 1 mm layer of FILSUVEZ to the wound (See Step 1). Cover the entire wound surface with a 1 mm layer of FILSUVEZ (Step 2). **Do not** rub in the gel. Cover the wound with a sterile, non-adhesive wound dressing (see Step 3).



**OR**

**Option 2: Apply FILSUVEZ directly to sterile, non-adhesive dressing.**

- Apply a generous layer of FILSUVEZ directly to the sterile, non-adhesive dressing (see Step 1). Cover the entire non-adhesive dressing with FILSUVEZ (Step 2). Cover the wound with the dressing so that the gel is in direct contact with the wound (see Step 3). Secure the non-adhesive wound dressing as directed by your healthcare provider .



**How should I store FILSUVEZ?**

Store FILSUVEZ at room temperature between 68°F to 77°F (20°C to 25°C). Do not freeze.

**Keep FILSUVEZ and all medicines out of the reach of children.**

**How should I throw away (dispose of) FILSUVEZ?**

Throw away (dispose of) any remaining FILSUVEZ and the tube right away after use in

household trash or through a drug take-back option, if available. Go to [www.fda.gov/drugdisposal](http://www.fda.gov/drugdisposal) for more information on drug disposal.

**Manufactured by:** Lichtenheldt GmbH, Pharmazeutische Fabrik, Werk 1, Industriestr. 7-11, 23812 Wahlstedt, Germany

For more information, call 1-888-661-9260 or go to [www.filsuvez.com](http://www.filsuvez.com)

This Instructions for Use has been approved by the U.S. Food and Drug Administration.  
Approved: December-2023

7419-01

## PRINCIPAL DISPLAY PANEL - 23.4 g Tube Carton

NDC 10122-310-02

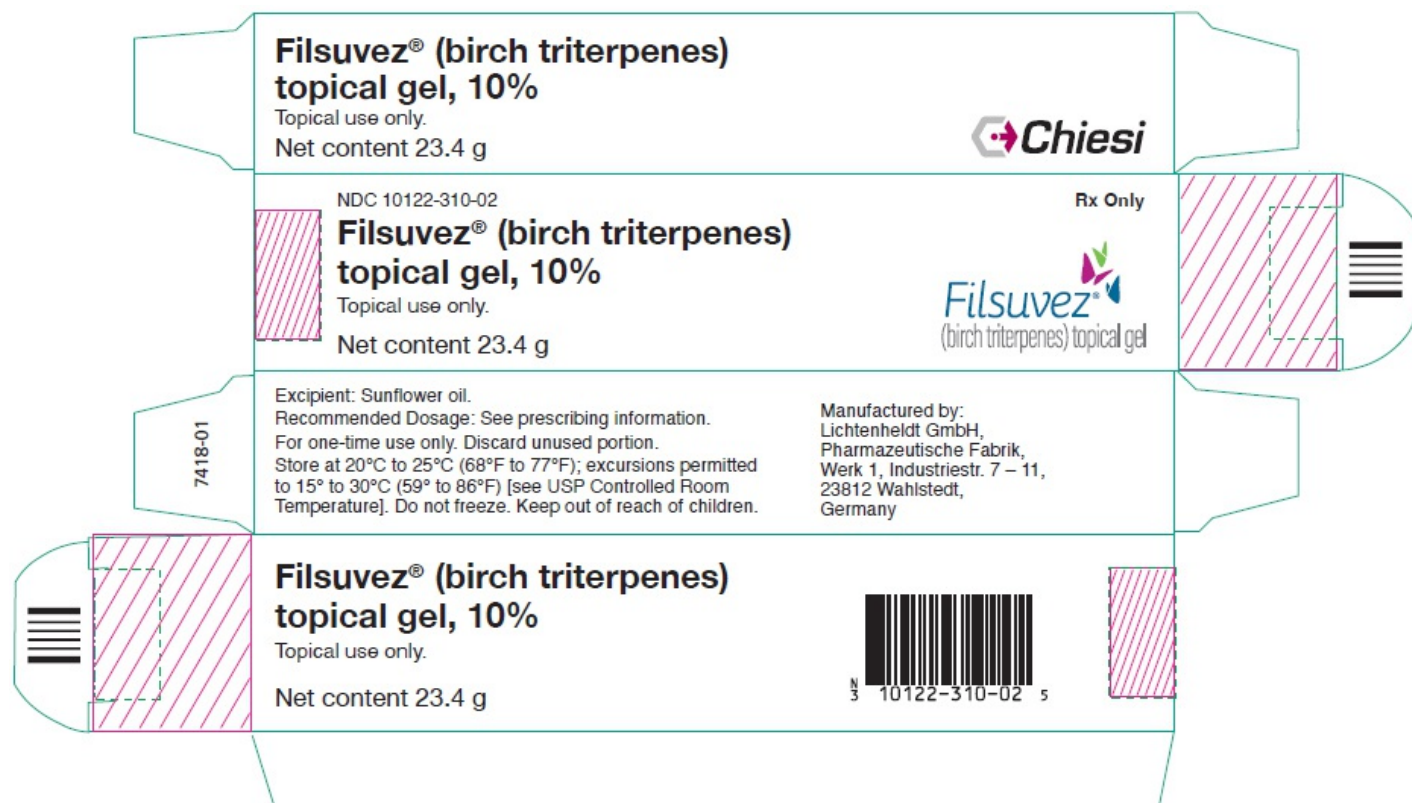
Rx Only

Filsuvez<sup>®</sup> (birch triterpenes)  
topical gel, 10%

Topical use only.

Net content 23.4 g

Filsuvez<sup>®</sup>  
(birch triterpenes) topical gel



**FILSUVEZ**

birch triterpenes gel

### Product Information

<b>Product Type</b>	HUMAN PRESCRIPTION DRUG	<b>Item Code (Source)</b>	NDC:10122-310
<b>Route of Administration</b>	TOPICAL		

### Active Ingredient/Active Moiety

<b>Ingredient Name</b>	<b>Basis of Strength</b>	<b>Strength</b>
birch triterpenes (UNII: BX09B0RQRO) (birch triterpenes - UNII:BX09B0RQRO)	birch triterpenes	100 mg in 1 g

### Inactive Ingredients

<b>Ingredient Name</b>	<b>Strength</b>
sunflower oil (UNII: 3W1JG795YI)	

### Packaging

#	Item Code	Package Description	Marketing Start Date	Marketing End Date
1	NDC:10122-310-02	1 in 1 CARTON	02/22/2024	
1	NDC:10122-310-01	23.4 g in 1 TUBE; Type 0: Not a Combination Product		

### Marketing Information

<b>Marketing Category</b>	<b>Application Number or Monograph Citation</b>	<b>Marketing Start Date</b>	<b>Marketing End Date</b>
NDA	NDA215064	02/22/2024	

**Labeler** - Chiesi USA, Inc. (088084228)

### Establishment

<b>Name</b>	<b>Address</b>	<b>ID/FEI</b>	<b>Business Operations</b>
Eurofins BioPharma Product Testing Hamburg GmbH		341475834	ANALYSIS(10122-310)

### Establishment

<b>Name</b>	<b>Address</b>	<b>ID/FEI</b>	<b>Business Operations</b>
Amryt GmbH		329468685	API MANUFACTURE(10122-310) , ANALYSIS(10122-310) , LABEL(10122-310) , PACK(10122-310)

### Establishment

<b>Name</b>	<b>Address</b>	<b>ID/FEI</b>	<b>Business Operations</b>
CIP Chemisches Institut Pforzheim GmbH		329345185	ANALYSIS(10122-310)

## Establishment

Name	Address	ID/FEI	Business Operations
BioChem Labor für biologische und chemische Analytik GmbH		318354230	ANALYSIS(10122-310)

## Establishment

Name	Address	ID/FEI	Business Operations
Nuvisan GmbH		341633232	ANALYSIS(10122-310)

## Establishment

Name	Address	ID/FEI	Business Operations
Lichtenheldt GmbH		316598945	ANALYSIS(10122-310) , LABEL(10122-310) , MANUFACTURE(10122-310) , PACK(10122-310)

## Establishment

Name	Address	ID/FEI	Business Operations
Lichtenheldt GmbH		506712962	ANALYSIS(10122-310)

## Establishment

Name	Address	ID/FEI	Business Operations
Synergy Health Radeberg GmbH		330473398	sterilize(10122-310)

## Establishment

Name	Address	ID/FEI	Business Operations
Pharma Packaging Solutions (Carton Service, Inc.)		928861723	pack(10122-310)

## Establishment

Name	Address	ID/FEI	Business Operations
CIT SRL		432126969	pack(10122-310)