

EPIVIR HBV- lamivudine tablet, film coated
EPIVIR HBV- lamivudine solution
GlaxoSmithKline LLC

HIGHLIGHTS OF PRESCRIBING INFORMATION

These highlights do not include all the information needed to use EPIVIR-HBV safely and effectively. See full prescribing information for EPIVIR-HBV.

EPIVIR-HBV (lamivudine) tablets, for oral use
EPIVIR-HBV (lamivudine) oral solution
Initial U.S. Approval: 1995

WARNING: EXACERBATIONS OF HEPATITIS B and RISK OF HIV-1 RESISTANCE IF EPIVIR-HBV IS USED IN PATIENTS WITH UNRECOGNIZED OR UNTREATED HIV-1 INFECTION

See full prescribing information for complete boxed warning.

- Severe acute exacerbations of hepatitis B have been reported in patients who have discontinued anti-hepatitis B therapy (including EPIVIR-HBV). Monitor hepatic function closely in these patients and, if appropriate, initiate anti-hepatitis B treatment. (5.1)
- EPIVIR-HBV tablets and oral solution contain a lower dose of the same active ingredient (lamivudine) as EPIVIR tablets and oral solution used to treat human immunodeficiency virus type 1 (HIV-1) infection. HIV-1 resistance may emerge in chronic hepatitis B patients with unrecognized or untreated HIV-1 infection because the lamivudine dosage in EPIVIR-HBV is subtherapeutic and monotherapy is inappropriate for the treatment of HIV-1 infection. HIV counseling and testing should be offered to all patients before beginning treatment with EPIVIR-HBV and periodically during treatment. (5.2)

----- **INDICATIONS AND USAGE** -----

EPIVIR-HBV is a nucleoside analogue reverse transcriptase inhibitor indicated for the treatment of chronic hepatitis B virus (HBV) infection associated with evidence of hepatitis B viral replication and active liver inflammation. (1)

----- **DOSAGE AND ADMINISTRATION** -----

- Adults: 100 mg, once daily. (2.2)
- Pediatric Patients aged 2 to 17 years: 3 mg per kg once daily up to 100 mg once daily. Prescribe oral solution for pediatric patients requiring less than 100 mg daily. (2.3)
- Patients with Renal Impairment: Doses of EPIVIR-HBV must be adjusted in accordance with renal function. (2.4)
- EPIVIR-HBV should not be used with other medications that contain lamivudine or emtricitabine. (2.5)

----- **DOSAGE FORMS AND STRENGTHS** -----

- Tablets: 100 mg (3)
- Oral Solution: 5 mg per mL (3)

----- **CONTRAINDICATIONS** -----

EPIVIR-HBV is contraindicated in patients with previous hypersensitivity reaction to lamivudine. (4)

----- **WARNINGS AND PRECAUTIONS** -----

- Emergence of Resistance-Associated HBV Substitutions: Consider a switch to an alternative regimen if serum HBV DNA remains detectable after 24 weeks of treatment. (2.6, 5.3)
- Lactic acidosis and severe hepatomegaly with steatosis, including fatal cases, have been reported with the use of nucleoside analogues. (5.4)

----- **ADVERSE REACTIONS** -----

The most common reported adverse reactions in those receiving EPIVIR-HBV (incidence greater than or

equal to 10% and reported at a rate greater than placebo) were ear, nose, and throat infections; sore throat; and diarrhea. (6.1)

To report SUSPECTED ADVERSE REACTIONS, contact GlaxoSmithKline at 1-888-825-5249 or FDA at 1-800-FDA-1088 or www.fda.gov/medwatch.

DRUG INTERACTIONS

Sorbitol: Coadministration of lamivudine and sorbitol may result in decreased lamivudine concentrations; when possible, avoid chronic coadministration. Consider more frequent monitoring of HBV viral load when chronic coadministration cannot be avoided. (7.2)

See 17 for PATIENT COUNSELING INFORMATION and FDA-approved patient labeling.

Revised: 12/2021

FULL PRESCRIBING INFORMATION: CONTENTS*

WARNING: EXACERBATIONS OF HEPATITIS B and RISK OF HIV-1 RESISTANCE IF EPIVIR-HBV IS USED IN PATIENTS WITH UNRECOGNIZED OR UNTREATED HIV-1 INFECTION

1 INDICATIONS AND USAGE

2 DOSAGE AND ADMINISTRATION

- 2.1 HIV Counseling and Testing
- 2.2 Recommended Dosage for Adult Patients
- 2.3 Recommended Dosage for Pediatric Patients
- 2.4 Patients with Renal Impairment
- 2.5 Important Administration Instructions
- 2.6 Assessing Patients during Treatment

3 DOSAGE FORMS AND STRENGTHS

4 CONTRAINDICATIONS

5 WARNINGS AND PRECAUTIONS

- 5.1 Exacerbations of Hepatitis after Discontinuation of Treatment
- 5.2 Risk of HIV-1 Resistance if EPIVIR-HBV is Used in Patients with Unrecognized or Untreated HIV-1 Infection
- 5.3 Emergence of Resistance-Associated HBV Substitutions
- 5.4 Lactic Acidosis and Severe Hepatomegaly with Steatosis

6 ADVERSE REACTIONS

- 6.1 Clinical Trials Experience
- 6.2 Postmarketing Experience

7 DRUG INTERACTIONS

- 7.1 Drugs Inhibiting Organic Cation Transporters
- 7.2 Sorbitol

8 USE IN SPECIFIC POPULATIONS

- 8.1 Pregnancy
- 8.2 Lactation
- 8.4 Pediatric Use
- 8.5 Geriatric Use
- 8.6 Patients with Impaired Renal Function
- 8.7 Patients with Impaired Liver Function

10 OVERDOSAGE

11 DESCRIPTION

12 CLINICAL PHARMACOLOGY

- 12.1 Mechanism of Action

12.3 Pharmacokinetics

12.4 Microbiology

13 NONCLINICAL TOXICOLOGY

13.1 Carcinogenesis, Mutagenesis, Impairment of Fertility

14 CLINICAL STUDIES

14.1 Adult Subjects

14.2 Pediatric Subjects

16 HOW SUPPLIED/STORAGE AND HANDLING

17 PATIENT COUNSELING INFORMATION

* Sections or subsections omitted from the full prescribing information are not listed.

FULL PRESCRIBING INFORMATION

WARNING: EXACERBATIONS OF HEPATITIS B and RISK OF HIV-1 RESISTANCE IF EPIVIR-HBV IS USED IN PATIENTS WITH UNRECOGNIZED OR UNTREATED HIV-1 INFECTION

Severe acute exacerbations of hepatitis B have been reported in patients who have discontinued anti-hepatitis B therapy (including EPIVIR-HBV). Hepatic function should be monitored closely with both clinical and laboratory follow-up for at least several months in patients who discontinue anti-hepatitis B therapy. If appropriate, initiation of anti-hepatitis B therapy may be warranted [*see Warnings and Precautions (5.1)*].

EPIVIR-HBV is not approved for the treatment of human immunodeficiency virus type 1 (HIV-1) infection because the lamivudine dosage in EPIVIR-HBV is subtherapeutic and monotherapy is inappropriate for the treatment of HIV-1 infection. HIV-1 resistance may emerge in chronic hepatitis B-infected patients with unrecognized or untreated HIV-1 infection. HIV counseling and testing should be offered to all patients before beginning treatment with EPIVIR-HBV and periodically during treatment [*see Warnings and Precautions (5.2)*].

1 INDICATIONS AND USAGE

EPIVIR-HBV is indicated for the treatment of chronic hepatitis B virus (HBV) infection associated with evidence of hepatitis B viral replication and active liver inflammation [*see Clinical Studies (14.1, 14.2)*].

The following points should be considered when initiating therapy with EPIVIR-HBV:

- Due to high rates of resistance development in treated patients, initiation of treatment with EPIVIR-HBV should only be considered when the use of an alternative antiviral agent with a higher genetic barrier to resistance is not available or appropriate.

- EPIVIR-HBV has not been evaluated in patients co-infected with human immunodeficiency virus (HIV), hepatitis C virus (HCV), or hepatitis delta virus.
- EPIVIR-HBV has not been evaluated in liver transplant recipients or in patients with chronic hepatitis B virus infection with decompensated liver disease.

2 DOSAGE AND ADMINISTRATION

2.1 HIV Counseling and Testing

HIV counseling and testing should be offered to all patients before beginning treatment with EPIVIR-HBV and periodically during treatment because of the risk of emergence of resistant human immunodeficiency virus type 1 (HIV-1) and limitation of treatment options if EPIVIR-HBV is prescribed to treat chronic hepatitis B infection in a patient who has unrecognized HIV-1 infection or acquires HIV-1 infection during treatment [see *Warnings and Precautions* (5.2)].

2.2 Recommended Dosage for Adult Patients

The recommended oral dosage of EPIVIR-HBV is 100 mg once daily.

2.3 Recommended Dosage for Pediatric Patients

The recommended oral dosage of EPIVIR-HBV for pediatric patients aged 2 to 17 years is 3 mg per kg once daily up to a maximum daily dosage of 100 mg. The oral solution formulation should be prescribed for patients requiring a dosage less than 100 mg or if unable to swallow tablets.

2.4 Patients with Renal Impairment

Dosage recommendations for adult patients with reduced renal function are provided in Table 1 [see *Clinical Pharmacology* (12.3)].

Table 1. Dosage of EPIVIR-HBV in Adult Patients with Renal Impairment

Creatinine Clearance (mL/min)	Recommended Dosage of EPIVIR-HBV
≥50	100 mg once daily
30-49	100 mg first dose, then 50 mg once daily
15-29	100 mg first dose, then 25 mg once daily
5-14	35 mg first dose, then 15 mg once daily
<5	35 mg first dose, then 10 mg once daily

Following correction of the dosage for renal impairment, no additional dosage modification of EPIVIR-HBV is required after routine (4-hour) hemodialysis or peritoneal dialysis [see *Clinical Pharmacology* (12.3)].

There are insufficient data to recommend a specific dosage of EPIVIR-HBV in pediatric patients with renal impairment.

2.5 Important Administration Instructions

- EPIVIR-HBV tablets and oral solution may be administered with or without food.
- The tablets and oral solution may be used interchangeably [see *Clinical Pharmacology* (12.3)].
- The oral solution should be used for doses less than 100 mg.
- EPIVIR-HBV should not be used with other medications that contain lamivudine or medications that contain emtricitabine.

2.6 Assessing Patients during Treatment

Patients should be monitored regularly during treatment by a physician experienced in the management of chronic hepatitis B. During treatment, combinations of events such as return of persistently elevated alanine aminotransferase (ALT), increasing levels of HBV DNA over time after an initial decline below assay limit, progression of clinical signs or symptoms of hepatic disease, and/or worsening of hepatic necroinflammatory findings may be considered as potentially reflecting loss of therapeutic response. Such observations should be taken into consideration when determining the advisability of continuing therapy with EPIVIR-HBV.

The optimal duration of treatment, the durability of Hepatitis B e Antigen (HBeAg) seroconversions occurring during treatment, and the relationship between treatment response and long-term outcomes such as hepatocellular carcinoma or decompensated cirrhosis are not known.

3 DOSAGE FORMS AND STRENGTHS

- EPIVIR-HBV tablets: 100 mg, butterscotch-colored, film-coated, biconvex, capsule-shaped tablets imprinted with “GX CG5” on one side.
- EPIVIR-HBV oral solution: A clear, colorless to pale yellow, strawberry-banana-flavored liquid, containing 5 mg of lamivudine per 1 mL.

4 CONTRAINDICATIONS

EPIVIR-HBV is contraindicated in patients with a previous hypersensitivity reaction to lamivudine.

5 WARNINGS AND PRECAUTIONS

5.1 Exacerbations of Hepatitis after Discontinuation of Treatment

Clinical and laboratory evidence of exacerbations of hepatitis have occurred after discontinuation of lamivudine. These exacerbations have been detected primarily by serum ALT elevations in addition to re-emergence of HBV DNA commonly observed after stopping treatment; see Table 4 for more information regarding frequency of posttreatment ALT elevations [see *Adverse Reactions* (6.1)]. Although most events appear to have been self-limited, fatalities have been reported in some cases. The causal relationship to discontinuation of lamivudine treatment is unknown. Patients should be closely monitored with both clinical and laboratory follow-up for at least several months after stopping treatment with EPIVIR-HBV. There is insufficient evidence to determine whether re-initiation of EPIVIR-HBV alters the course of posttreatment exacerbations of

hepatitis.

5.2 Risk of HIV-1 Resistance if EPIVIR-HBV is Used in Patients with Unrecognized or Untreated HIV-1 Infection

EPIVIR-HBV tablets and oral solution contain a lower lamivudine dose than the lamivudine dose used to treat HIV-1 infection with EPIVIR tablets and oral solution or with lamivudine-containing antiretroviral fixed-dose combination products.

EPIVIR-HBV is not appropriate for patients co-infected with HBV and HIV-1. If a patient with unrecognized or untreated HIV-1 infection is prescribed EPIVIR-HBV for the treatment of HBV, rapid emergence of HIV-1 resistance is likely to result because of the subtherapeutic dose and the inappropriate use of monotherapy for HIV-1 treatment. HIV counseling and testing should be offered to all patients before beginning treatment with EPIVIR-HBV and periodically during treatment because of the risk of rapid emergence of resistant HIV-1 and limitation of treatment options if EPIVIR-HBV is prescribed to treat chronic hepatitis B in a patient who has unrecognized or untreated HIV-1 infection or who acquires HIV-1 infection during treatment.

5.3 Emergence of Resistance-Associated HBV Substitutions

In controlled clinical trials, YMDD-mutant HBV was detected in subjects with on-EPIVIR-HBV re-appearance of HBV DNA after an initial decline below the assay limit [see *Microbiology (12.4)*]. Subjects treated with EPIVIR-HBV (adults and children) with YMDD-mutant HBV at 52 weeks showed diminished treatment responses in comparison with subjects treated with EPIVIR-HBV without evidence of YMDD substitutions, including the following: lower rates of HBeAg seroconversion and HBeAg loss (no greater than placebo recipients), more frequent return of positive HBV DNA, and more frequent ALT elevations. In the controlled trials, when subjects developed YMDD-mutant HBV, they had a rise in HBV DNA and ALT from their previous on-treatment levels. Progression of hepatitis B, including death, has been reported in some subjects with YMDD-mutant HBV, including subjects from the liver transplant setting and from other clinical trials. In order to reduce the risk of resistance in patients receiving monotherapy with EPIVIR-HBV, a switch to an alternative regimen should be considered if serum HBV DNA remains detectable after 24 weeks of treatment. Optimal therapy should be guided by resistance testing.

5.4 Lactic Acidosis and Severe Hepatomegaly with Steatosis

Lactic acidosis and severe hepatomegaly with steatosis, including fatal cases, have been reported with the use of nucleoside analogues, including EPIVIR-HBV. A majority of these cases have been in women. Female sex and obesity may be risk factors for the development of lactic acidosis and severe hepatomegaly with steatosis in patients treated with antiretroviral nucleoside analogues. Most of these reports have described patients receiving nucleoside analogues for treatment of HIV infection, but there have been reports of lactic acidosis in patients receiving lamivudine for hepatitis B. Treatment with EPIVIR-HBV should be suspended in any patient who develops clinical or laboratory findings suggestive of lactic acidosis or pronounced hepatotoxicity which may include hepatomegaly and steatosis even in the absence of marked transaminase elevations.

6 ADVERSE REACTIONS

The following adverse reactions are discussed in other sections of the labeling:

- Exacerbations of hepatitis B after discontinuation of treatment [see *Warnings and Precautions* (5.1)].
- Risk of emergence of resistant HIV-1 infection [see *Warnings and Precautions* (5.2)].
- Risk of emergence of resistant HBV infection [see *Warnings and Precautions* (5.3)].
- Lactic acidosis and severe hepatomegaly with steatosis [see *Warnings and Precautions* (5.4)].

6.1 Clinical Trials Experience

Because clinical trials are conducted under widely varying conditions, adverse reaction rates observed in the clinical trials of a drug cannot be directly compared with rates in the clinical trials of another drug and may not reflect the rates observed in clinical practice.

Clinical Trials Experience in Adult Subjects with Chronic HBV Infection

Clinical adverse reactions (regardless of investigator's causality assessment) reported in greater than or equal to 10% of subjects who received EPIVIR-HBV and reported at a rate greater than in subjects who received placebo are listed in Table 2.

Table 2. Clinical Adverse Reactions^a Reported in Greater than or Equal to 10% of Subjects Who Received EPIVIR-HBV for 52 to 68 Weeks and at an Incidence Greater than Placebo (Trials 1-3)

Adverse Event	EPIVIR-HBV (n = 332)	Placebo (n = 200)
Ear, Nose, and Throat		
Ear, nose, and throat infections	25%	21%
Sore throat	13%	8%
Gastrointestinal		
Diarrhea	14%	12%

^a Includes adverse events regardless of severity and causality assessment.

Specified laboratory abnormalities reported in subjects who received EPIVIR-HBV and reported at a rate greater than in subjects who received placebo are listed in Table 3.

Table 3. Frequencies of Specified Laboratory Abnormalities Reported during Treatment at a Greater Frequency in Subjects Treated with EPIVIR-HBV than with Placebo (Trials 1-3)^a

Test (Abnormal Level)	Subjects with Abnormality/Subjects with Observations	
	EPIVIR-HBV	Placebo
Serum Lipase $\geq 2.5 \times \text{ULN}^b$	10%	7%
Creatine Phosphokinase (CPK) $\geq 7 \times \text{baseline}$	9%	5%

Platelets <50,000/mm ³	4%	3%
-----------------------------------	----	----

^a Includes subjects treated for 52 to 68 weeks.

^b Includes observations during and after treatment in the 2 placebo-controlled trials that collected this information.

ULN = Upper limit of normal.

In subjects followed for up to 16 weeks after discontinuation of treatment, posttreatment ALT elevations were observed more frequently in subjects who had received EPIVIR-HBV than in subjects who had received placebo. A comparison of ALT elevations between Weeks 52 and 68 in subjects who discontinued EPIVIR-HBV at Week 52 and subjects in the same trials who received placebo throughout the treatment course is shown in Table 4.

Table 4. Posttreatment ALT Elevations with No-Active-Treatment Follow-up (Trials 1 and 3)

Abnormal Value	Subjects with ALT Elevation/ Subjects with Observations ^a	
	EPIVIR-HBV ^b	Placebo ^b
ALT ≥2 x baseline value	27%	19%
ALT ≥3 x baseline value ^c	21%	8%
ALT ≥2 x baseline value and absolute ALT >500 IU/L	15%	7%
ALT ≥2 x baseline value; and bilirubin >2 x ULN and ≥2 x baseline value	0.7%	0.9%

^a Each subject may be represented in one or more category.

^b During treatment phase.

^c Comparable to a Grade 3 toxicity in accordance with modified WHO criteria.

ULN = Upper limit of normal.

Clinical Trials Experience in Pediatric Subjects with Chronic HBV Infection

Most commonly observed adverse reactions in the pediatric trials were similar to those in adult trials. Posttreatment transaminase elevations were observed in some subjects followed after cessation of EPIVIR-HBV.

6.2 Postmarketing Experience

The following adverse reactions have been identified during post-approval use of EPIVIR-HBV. Because these reactions are reported voluntarily from a population of unknown size, it is not always possible to reliably estimate their frequency or establish a causal relationship to drug exposure. These reactions have been chosen for inclusion due to a combination of their seriousness, frequency of reporting, or potential causal connection to lamivudine.

Blood and Lymphatic

Anemia (including pure red cell aplasia and severe anemias progressing on therapy), lymphadenopathy, splenomegaly, thrombocytopenia.

Digestive

Stomatitis.

Endocrine and Metabolic

Hyperglycemia.

General

Weakness.

Hepatic and Pancreatic

Lactic acidosis and steatosis [see *Warnings and Precautions (5.4)*], posttreatment exacerbations of hepatitis [see *Warnings and Precautions (5.1)*], pancreatitis.

Hypersensitivity

Anaphylaxis, urticaria.

Musculoskeletal

Cramps, rhabdomyolysis.

Nervous

Paresthesia, peripheral neuropathy.

Respiratory

Abnormal breath sounds/wheezing.

Skin

Alopecia, pruritus, rash.

7 DRUG INTERACTIONS

7.1 Drugs Inhibiting Organic Cation Transporters

Lamivudine is predominantly eliminated in the urine by active organic cationic secretion. The possibility of interactions with other drugs administered concurrently should be considered, particularly when their main route of elimination is active renal secretion via the organic cationic transport system (e.g., trimethoprim) [see *Clinical Pharmacology (12.3)*]. No data are available regarding interactions with other drugs that have renal clearance mechanisms similar to that of lamivudine.

7.2 Sorbitol

Coadministration of single doses of lamivudine and sorbitol resulted in a sorbitol dose-dependent reduction in lamivudine exposures. When possible, avoid use of sorbitol-containing medicines with lamivudine [see *Clinical Pharmacology (12.3)*]. Consider more frequent monitoring of HBV viral load when chronic coadministration cannot be avoided.

8 USE IN SPECIFIC POPULATIONS

8.1 Pregnancy

Pregnancy Exposure Registry

There is a pregnancy exposure registry that monitors pregnancy outcomes in women exposed to lamivudine during pregnancy. Healthcare providers are encouraged to register patients by calling the Antiretroviral Pregnancy Registry (APR) at 1-800-258-4263.

Risk Summary

Available data from the APR show no substantial difference in the risk of overall major birth defects for lamivudine compared with the background rate for major birth defects of 2.7% reported in the U.S. reference population of the Metropolitan Atlanta Congenital Defects Program (MACDP). The APR uses the MACDP as a U.S. reference population for birth defects in the general population. The MACDP evaluates women and infants from a limited geographic area and does not include outcomes for births that occur at less than 20 weeks' gestation. Of over 12,900 women exposed to lamivudine in the APR, less than 2% were HBV mono-infected. The majority of women exposed to lamivudine in the APR were HIV-1-infected and were treated with higher doses of lamivudine compared with HBV mono-infected women. In addition to lamivudine, HIV-1-infected women were also treated with other concomitant medications for HIV-1 infection (*see Data*). The estimated rate of miscarriage for women exposed to lamivudine in the indicated population is unknown. The estimated background rate of miscarriage in clinically recognized pregnancies in the U.S. general population is 15% to 20%.

Oral administration of lamivudine to pregnant rabbits during organogenesis resulted in embryoletality at systemic exposure (AUC) similar to the recommended clinical dose; however, no adverse developmental effects were observed with oral administration of lamivudine to pregnant rats during organogenesis at plasma concentrations (C_{max}) 60 times the recommended clinical dose (*see Data*).

Data

Human Data: Based on prospective reports from the APR of over 12,900 exposures to lamivudine during pregnancy resulting in live births (including over 5,400 exposed in the first trimester and over 7,500 exposed in the second/third trimester), there was no difference between the overall risk of birth defects with lamivudine compared with the background birth defect rate of 2.7% observed in the U.S. reference population of the MACDP. The prevalence of birth defects in live births was 3.1% (95% CI: 2.7% to 3.6%) following first trimester exposure to lamivudine-containing regimens and 2.9% (95% CI: 2.5% to 3.3%) following second/third trimester exposure to lamivudine-containing regimens.

The pharmacokinetics of lamivudine in patients with HBV or HIV-1 infection and in healthy volunteers are similar at similar doses. Lamivudine pharmacokinetics were studied in pregnant women with HIV-1 infection during 2 clinical trials conducted in South Africa. The trials assessed pharmacokinetics in 16 women at 36 weeks' gestation using 150 mg lamivudine twice daily (3 times the recommended daily dosage for HBV) with zidovudine, 10 women at 38 weeks' gestation using 150 mg lamivudine twice daily (3 times the recommended daily dosage for HBV) with zidovudine, and 10 women at 38 weeks' gestation using lamivudine 300 mg twice daily (6 times the recommended daily dosage for HBV) without other antiretrovirals. Lamivudine concentrations were generally similar in maternal, neonatal, and umbilical cord serum samples. In a subset of

subjects, amniotic fluid specimens were collected following natural rupture of membranes and confirmed that lamivudine crosses the placenta in humans. Based on limited data at delivery, median (range) amniotic fluid concentrations of lamivudine were 3.9- (1.2- to 12.8-) fold greater compared with paired maternal serum concentrations (n = 8).

Animal Data: Lamivudine was administered orally to pregnant rats (at 90, 600, and 4,000 mg per kg per day) and rabbits (at 90, 300, and 1,000 mg per kg per day and at 15, 40, and 90 mg per kg per day) during organogenesis (on Gestation Days 7 through 16 [rat] and 8 through 20 [rabbit]). No evidence of fetal malformations due to lamivudine was observed in rats and rabbits at doses producing plasma concentrations (C_{max}) approximately 53 or more times higher than human exposure at the recommended daily dose. Evidence of early embryoletality in the absence of maternal toxicity was seen in the rabbit at systemic exposures (AUC) similar to those observed in humans, but there was no indication of this effect in the rat at plasma concentrations (C_{max}) 60 times higher than human exposure at the recommended daily dose. Studies in pregnant rats showed that lamivudine is transferred to the fetus through the placenta. In the fertility/pre-and postnatal development study in rats, lamivudine was administered orally at doses of 180, 900, and 4,000 mg per kg per day (from prior to mating through postnatal Day 20). In the study, development of the offspring, including fertility and reproductive performance, was not affected by maternal administration of lamivudine at plasma concentrations (C_{max}) 104 times higher than human exposure.

8.2 Lactation

Risk Summary

Lamivudine is present in human milk. There is no information available regarding lamivudine concentrations in milk from lactating women receiving lamivudine for treatment of HBV infection. However, in lactating women with HIV-1 infection being treated with lamivudine at 3 or 6 times the recommended daily dose for HBV, lamivudine concentrations in milk were similar to those observed in serum (see *Data*). The lamivudine dose received by a breastfed infant of a mother being treated for HIV-1 infection was estimated to be approximately 6% of the recommended daily lamivudine dose for HBV in children over 2 years of age.

There is no information available regarding the effects of the drug on the breastfed infant or on milk production.

The developmental and health benefits of breastfeeding should be considered along with the mother's clinical need for EPIVIR-HBV and any potential adverse effects on the breastfed infant from lamivudine or from the underlying maternal condition.

Data

In mothers with HIV receiving lamivudine monotherapy (300 mg twice daily [6 times the recommended daily dosage for HBV]) or combination therapy (150 mg lamivudine twice daily [3 times the recommended daily dosage for HBV] with 300 mg zidovudine twice daily), the median breast milk to plasma lamivudine concentration ratio was 0.6 to 3.3, and the estimated infant daily dose was approximately 6% of the recommended 3-mg-per-kg daily lamivudine dose for treatment of HBV in children over 2 years of age. In breastfed infants of mothers with HIV-1 infection receiving lamivudine therapy, the blood concentrations of lamivudine decreased after delivery and were undetectable at 6

months despite constant milk concentrations. This is consistent with increased lamivudine renal clearance in the first 6 months of life.

8.4 Pediatric Use

EPIVIR-HBV is indicated for the treatment of chronic hepatitis B virus infection in pediatric patients aged 2 to 17 years [see *Indications and Usage (1)*, *Clinical Pharmacology (12.3)*, *Clinical Studies (14.2)*]. The safety and efficacy of EPIVIR-HBV in pediatric patients younger than 2 years have not been established.

8.5 Geriatric Use

Clinical trials of EPIVIR-HBV did not include sufficient numbers of subjects aged 65 and over to determine whether they respond differently from younger subjects. In general, caution should be exercised in the administration of EPIVIR-HBV in elderly patients reflecting the greater frequency of decreased hepatic, renal, or cardiac function, and of concomitant disease or other drug therapy [see *Dosage and Administration (2.4)*, *Clinical Pharmacology (12.3)*].

8.6 Patients with Impaired Renal Function

Reduction of the dosage of EPIVIR-HBV is recommended for patients with impaired renal function [see *Dosage and Administration (2.4)*, *Clinical Pharmacology (12.3)*].

8.7 Patients with Impaired Liver Function

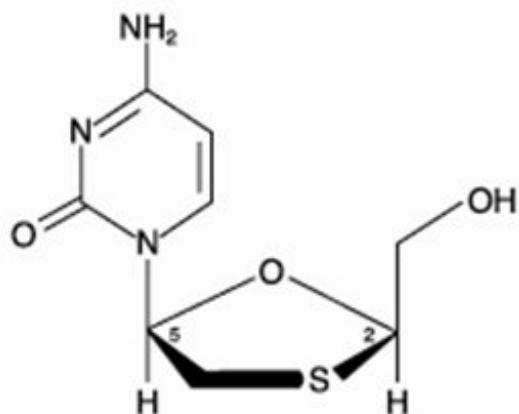
No dose adjustment for lamivudine is required for patients with impaired hepatic function.

10 OVERDOSAGE

There is no known specific treatment for overdose with EPIVIR-HBV. If overdose occurs, the patient should be monitored and standard supportive treatment applied, as required. Because a negligible amount of lamivudine was removed via (4-hour) hemodialysis, continuous ambulatory peritoneal dialysis, and automated peritoneal dialysis, it is not known if continuous hemodialysis would provide clinical benefit in a lamivudine overdose event.

11 DESCRIPTION

EPIVIR-HBV is a synthetic nucleoside analogue with activity against HBV. The chemical name of lamivudine is (2R,cis)-4-amino-1-(2-hydroxymethyl-1,3-oxathiolan-5-yl)-(1H)-pyrimidin-2-one. Lamivudine is the (-)enantiomer of a dideoxy analogue of cytidine. Lamivudine has also been referred to as (-)2',3'-dideoxy, 3'-thiacytidine. It has a molecular formula of C₈H₁₁N₃O₃S and a molecular weight of 229.3 g per mol. It has the following structural formula:



Lamivudine is a white to off-white crystalline solid with a solubility of approximately 70 mg per mL in water at 20°C.

EPIVIR-HBV tablets are for oral administration. Each tablet contains 100 mg of lamivudine and the inactive ingredients hypromellose, macrogol 400, magnesium stearate, microcrystalline cellulose, polysorbate 80, red iron oxide, sodium starch glycolate, titanium dioxide, and yellow iron oxide.

EPIVIR-HBV oral solution is for oral administration. One milliliter (1 mL) of EPIVIR-HBV oral solution contains 5 mg of lamivudine (5 mg per mL) in an aqueous solution and the inactive ingredients artificial strawberry and banana flavors, citric acid (anhydrous), methylparaben, propylene glycol, propylparaben, sodium citrate (dihydrate), and sucrose (200 mg).

12 CLINICAL PHARMACOLOGY

12.1 Mechanism of Action

Lamivudine is an antiviral agent with activity against HBV [see *Microbiology* (12.4)].

12.3 Pharmacokinetics

Pharmacokinetics in Adults

The pharmacokinetic properties of lamivudine have been studied as single and multiple oral doses ranging from 5 mg to 600 mg per day administered to HBV-infected subjects.

Absorption and Bioavailability: Following single oral doses of 100 mg, the peak serum lamivudine concentration (C_{max}) in HBV-infected patients (steady state) and healthy subjects (single dose) was 1.28 ± 0.56 mcg per mL and 1.05 ± 0.32 mcg per mL (mean \pm SD), respectively, which occurred between 0.5 and 2 hours after administration. The area under the plasma concentration versus time curve ($AUC_{[0-24\text{ h}]}$) following 100-mg lamivudine oral single and repeated daily doses to steady state was 4.3 ± 1.4 (mean \pm SD) and 4.7 ± 1.7 mcg•hour per mL, respectively. The relative bioavailability of the tablet and oral solution were demonstrated in healthy subjects.

Although the solution demonstrated a slightly higher peak serum concentration (C_{\max}), there was no significant difference in systemic exposure (AUC) between the oral solution and the tablet. Therefore, the oral solution and the tablet may be used interchangeably.

After oral administration of lamivudine once daily to HBV-infected adults, the AUC and C_{\max} increased in proportion to dose over the range from 5 mg to 600 mg once daily.

Absolute bioavailability in 12 adult subjects was $86\% \pm 16\%$ (mean \pm SD) for the 150-mg tablet and $87\% \pm 13\%$ for the 10-mg-per mL oral solution.

Effects of Food on Oral Absorption: EPIVIR-HBV tablets and oral solution may be administered with or without food. The 100-mg tablet was administered orally to 24 healthy subjects on 2 occasions, once in the fasted state and once with food (standard meal: 967 kcal; 67 grams fat, 33 grams protein, 58 grams carbohydrate). There was no significant difference in systemic exposure (AUC) in the fed and fasted states.

Distribution: The apparent volume of distribution after IV administration of lamivudine to 20 HIV-1-infected subjects was 1.3 ± 0.4 L per kg, suggesting that lamivudine distributes into extravascular spaces. Volume of distribution was independent of dose and did not correlate with body weight.

Binding of lamivudine to human plasma proteins is less than 36%. In vitro studies showed that over the concentration range of 0.1 to 100 mcg per mL, the amount of lamivudine associated with erythrocytes ranged from 53% to 57% and was independent of concentration.

Metabolism: Metabolism of lamivudine is a minor route of elimination. In humans, the only known metabolite of lamivudine is the trans-sulfoxide metabolite (approximately 5% of an oral dose after 12 hours). Serum concentrations of this metabolite have not been determined. Lamivudine is not significantly metabolized by cytochrome P450 enzymes.

Elimination: The majority of lamivudine is eliminated unchanged in urine by active organic cationic secretion. In 9 healthy subjects given a single 300-mg oral dose of lamivudine, renal clearance was 199.7 ± 56.9 mL per min (mean \pm SD). In 20 HIV-1-infected subjects given a single IV dose, renal clearance was 280.4 ± 75.2 mL per min (mean \pm SD), representing $71\% \pm 16\%$ (mean \pm SD) of total clearance of lamivudine.

In most single-dose trials with plasma sampling for up to 48 or 72 hours after dosing, the observed mean elimination half-life ($t_{1/2}$) ranged from 13 to 19 hours. In HIV-1-infected subjects, total clearance was 398.5 ± 69.1 mL per min (mean \pm SD). Oral clearance and elimination half-life were independent of dose and body weight over an oral dosing range of 0.25 to 10 mg per kg.

Specific Populations

Patients with Renal Impairment: The pharmacokinetic properties of lamivudine have been determined in healthy adults and in adults with impaired renal function, with and without hemodialysis (Table 5).

Table 5. Pharmacokinetic Parameters (Mean \pm SD) Dose-Normalized to a Single 100-mg Oral Dose of Lamivudine in Adults with Varying Degrees of Renal Function

	Creatinine Clearance Criterion (Number of Subjects)
--	--

Parameter	≥80 mL/min (n = 9)	20-59 mL/min (n = 8)	<20 mL/min (n = 6)
Creatinine clearance (mL/min)	97 (range 82-117)	39 (range 25-49)	15 (range 13-19)
C _{max} (mcg/mL)	1.31 ± 0.35	1.85 ± 0.40	1.55 ± 0.31
AUC (mcg•h/mL)	5.28 ± 1.01	14.67 ± 3.74	27.33 ± 6.56
Cl/F (mL/min)	326.4 ± 63.8	120.1 ± 29.5	64.5 ± 18.3

T_{max} was not significantly affected by renal function. Based on these observations, it is recommended that the dosage of lamivudine be modified in patients with renal impairment [see *Dosage and Administration* (2.4)].

Hemodialysis increases lamivudine clearance from a mean of 64 to 88 mL per min; however, the length of time of hemodialysis (4 hours) was insufficient to significantly alter mean lamivudine exposure after a single-dose administration. Continuous ambulatory peritoneal dialysis and automated peritoneal dialysis have negligible effects on lamivudine clearance. Therefore, it is recommended, following correction of dose for creatinine clearance, that no additional dose modification be made after routine hemodialysis or peritoneal dialysis.

The effects of renal impairment on lamivudine pharmacokinetics in pediatric patients with chronic hepatitis B is not known.

Patients with Hepatic Impairment: The pharmacokinetic properties of lamivudine in adults with hepatic impairment are shown in Table 6. Subjects were stratified by severity of hepatic impairment.

Table 6. Pharmacokinetic Parameters (Mean ± SD) Dose-Normalized to a Single 100-mg Dose of Lamivudine in Adults with Normal or Impaired Hepatic Function

Parameter	Normal (n = 8)	Impairment ^a	
		Moderate (n = 8)	Severe (n = 8)
C _{max} (mcg/mL)	0.92 ± 0.31	1.06 ± 0.58	1.08 ± 0.27
AUC (mcg•h/mL)	3.96 ± 0.58	3.97 ± 1.36	4.30 ± 0.63
T _{max} (h)	1.3 ± 0.8	1.4 ± 0.8	1.4 ± 1.2
Cl/F (mL/min)	424.7 ± 61.9	456.9 ± 129.8	395.2 ± 51.8
Cl _r (mL/min)	279.2 ± 79.2	323.5 ± 100.9	216.1 ± 58.0

^a Hepatic impairment assessed by aminopyrine breath test.

Pharmacokinetic parameters were not altered by diminishing hepatic impairment. Safety and efficacy of EPIVIR-HBV have not been established in the presence of decompensated liver disease [see *Indications and Usage* (1)].

Patients Post-Hepatic Transplant: Fourteen HBV-infected adult subjects received liver transplant following lamivudine therapy and completed pharmacokinetic assessments at enrollment, 2 weeks after 100-mg once-daily dosing (pre-transplant), and 3 months following transplant; there were no significant differences in pharmacokinetic parameters. The overall exposure of lamivudine is primarily affected by renal impairment;

consequently, transplant patients with renal impairment had generally higher exposure than patients with normal renal function. Safety and efficacy of EPIVIR-HBV have not been established in this population [see *Indications and Usage (1)*].

Pregnant Women: The pharmacokinetics of lamivudine in patients with HBV or HIV-1 infection and in healthy volunteers were similar at similar doses. Lamivudine pharmacokinetics were studied in 36 pregnant women with HIV during 2 clinical trials conducted in South Africa (3 to 6 times the recommended daily dosage for HBV). Lamivudine pharmacokinetics in pregnant women were similar to those seen in non-pregnant adults and in postpartum women. Lamivudine concentrations were generally similar in maternal, neonatal, and umbilical cord serum samples.

Pediatric Patients: Lamivudine pharmacokinetics were evaluated in a 28-day dose-ranging trial in 53 pediatric subjects with chronic hepatitis B. Subjects aged 2 to 12 years were randomized to receive lamivudine 0.35 mg per kg twice daily, 3 mg per kg once daily, 1.5 mg per kg twice daily, or 4 mg per kg twice daily. Subjects aged 13 to 17 years received lamivudine 100 mg once daily. Lamivudine T_{\max} was 0.5 to 1 hour. In general, both C_{\max} and exposure (AUC) showed dose proportionality in the dosing range studied. Weight-corrected oral clearance was highest at age 2 and declined from 2 to 12 years, where values were then similar to those seen in adults. A dose of 3 mg per kg given once daily produced a steady-state lamivudine AUC (mean 5,953 ng•hour per mL \pm 1,562 SD) similar to that associated with a dose of 100 mg per day in adults.

Geriatric Patients: The pharmacokinetics of lamivudine after administration of EPIVIR-HBV to subjects over 65 years have not been studied [see *Use in Specific Populations (8.5)*].

Male and Female Patients: There are no significant or clinically relevant gender differences in lamivudine pharmacokinetics.

Racial Groups: There are no significant or clinically relevant racial differences in lamivudine pharmacokinetics.

Drug Interaction Studies

Effect of Lamivudine on the Pharmacokinetics of Other Agents: Based on in vitro study results, lamivudine at therapeutic drug exposures is not expected to affect the pharmacokinetics of drugs that are substrates of the following transporters: organic anion transporter polypeptide 1B1/3 (OATP1B1/3), breast cancer resistance protein (BCRP), P-glycoprotein (P-gp), multidrug and toxin extrusion protein 1 (MATE1), MATE2-K, organic cation transporter 1 (OCT1), OCT2, or OCT3.

Effect of Other Agents on the Pharmacokinetics of Lamivudine: Lamivudine is a substrate of MATE1, MATE2-K, and OCT2 in vitro. Trimethoprim (an inhibitor of these drug transporters) has been shown to increase lamivudine plasma concentrations. This interaction is not considered clinically significant, and no dose adjustment of lamivudine is needed.

Lamivudine is a substrate of P-gp and BCRP; however, considering its absolute bioavailability (87%), it is unlikely that these transporters play a significant role in the absorption of lamivudine. Therefore, coadministration of drugs that are inhibitors of these efflux transporters is unlikely to affect the disposition and elimination of lamivudine.

Interferon Alfa: There was no significant pharmacokinetic interaction between lamivudine

and interferon alfa in a trial of 19 healthy male subjects.

Ribavirin: In vitro data indicate ribavirin reduces phosphorylation of lamivudine, stavudine, and zidovudine. However, no pharmacokinetic (e.g., plasma concentrations or intracellular triphosphorylated active metabolite concentrations) or pharmacodynamic (e.g., loss of HIV-1/HCV virologic suppression) interaction was observed when ribavirin and lamivudine (n = 18), stavudine (n = 10), or zidovudine (n = 6) were coadministered as part of a multi-drug regimen to HIV-1/HCV co-infected subjects.

Sorbitol (Excipient): Lamivudine and sorbitol solutions were coadministered to 16 healthy adult subjects in an open-label, randomized sequence, 4-period, crossover trial. Each subject received a single 300-mg dose of lamivudine oral solution alone or coadministered with a single dose of 3.2 grams, 10.2 grams, or 13.4 grams of sorbitol in solution. Coadministration of lamivudine with sorbitol resulted in dose-dependent decreases of 20%, 39%, and 44% in the $AUC_{(0-24)}$, 14%, 32%, and 36% in the $AUC_{(\infty)}$, and 28%, 52%, and 55% in the C_{max} of lamivudine.

Trimethoprim/Sulfamethoxazole: Lamivudine and trimethoprim/sulfamethoxazole (TMP/SMX) were coadministered to 14 HIV-1-positive subjects in a single-center, open-label, randomized, crossover trial. Each subject received treatment with a single 300-mg dose of lamivudine and TMP 160 mg/SMX 800 mg once a day for 5 days with concomitant administration of lamivudine 300 mg with the fifth dose in a crossover design. Coadministration of TMP/SMX with lamivudine resulted in an increase of $43\% \pm 23\%$ (mean \pm SD) in lamivudine $AUC_{(\infty)}$, a decrease of $29\% \pm 13\%$ in lamivudine oral clearance, and a decrease of $30\% \pm 36\%$ in lamivudine renal clearance. The pharmacokinetic properties of TMP and SMX were not altered by coadministration with lamivudine.

Zidovudine: No clinically significant alterations in lamivudine or zidovudine pharmacokinetics were observed in 12 asymptomatic HIV-1-infected adult subjects given a single dose of zidovudine (200 mg) in combination with multiple doses of lamivudine (300 mg every 12 hours).

12.4 Microbiology

Mechanism of Action

Lamivudine is a synthetic nucleoside analogue. Intracellularly, lamivudine is phosphorylated to its active 5'-triphosphate metabolite, lamivudine triphosphate (3TC-TP). The principal mode of action of 3TC-TP is inhibition of the RNA- and DNA-dependent polymerase activities of HBV reverse transcriptase (rt) via DNA chain termination after incorporation of the nucleotide analogue.

Antiviral Activity

Activity of lamivudine against HBV in cell culture was assessed in HBV DNA-transfected 2.2.15 cells, HB611 cells, and infected human primary hepatocytes. EC_{50} values (the concentration of drug needed to reduce the level of extracellular HBV DNA by 50%) varied from 0.01 microM (2.3 ng per mL) to 5.6 microM (1,288 ng per mL) depending upon the duration of exposure of cells to lamivudine, the cell model system, and the protocol used. See the prescribing information for EPIVIR regarding activity of lamivudine against HIV. The anti-HBV activity of lamivudine in combination with adefovir or tenofovir in cell culture was not antagonistic.

Resistance

Lamivudine-resistant isolates have been identified in subjects with virologic breakthrough.

Lamivudine-resistant HBV isolates develop rtM204V/I substitutions in the YMDD motif of the catalytic domain of the viral reverse transcriptase. rtM204V/I substitutions are frequently accompanied by other substitutions (rtV173L, rtL180M) which enhance the level of lamivudine resistance or act as compensatory substitutions improving replication efficiency. Other substitutions reported in lamivudine-resistant HBV isolates include rtH55R, rtL80I/V, rtV173M, rtA181T/V, rtT184S, rtF219Y, rtL229F/M/V/W, and rtQ267H.

In 4 controlled clinical trials evaluating EPIVIR-HBV in adults with HBeAg-positive chronic hepatitis B virus infection (CHB), YMDD-mutant HBV was detected in 81 of 335 subjects receiving EPIVIR-HBV 100 mg once daily for 52 weeks. The prevalence of YMDD substitutions was less than 10% in each of these trials for subjects studied at 24 weeks and increased to an average of 24% (range in 4 trials: 16% to 32%) at 52 weeks. A similar prevalence of YMDD substitutions has been reported in large controlled Phase 3 clinical trials utilizing EPIVIR-HBV as a comparator arm in adults with HBeAg-positive CHB for 48 weeks (range in 4 trials: 11% to 27%) and in adults with HBeAg-negative CHB for 48 weeks (range in 3 clinical trials: 6% to 18%).

Long-term follow up in subjects who continued 100 mg per day of EPIVIR-HBV demonstrated that the prevalence of YMDD substitutions further increased from 23% (211 of 998) in Year 1, to 46% (368 of 796), 55% (378 of 688), 71% (421 of 592), and 65% (103 of 159) in Years 2, 3, 4, and 5, respectively.

In a controlled trial, treatment-naïve subjects with HBeAg-positive CHB were treated with EPIVIR-HBV or EPIVIR-HBV plus adefovir dipivoxil combination therapy. Following 104 weeks of therapy, YMDD-mutant HBV was detected in 7 of 40 (18%) subjects receiving combination therapy compared with 15 of 35 (43%) subjects receiving therapy with only EPIVIR-HBV. In 2 controlled clinical trials, treatment-naïve subjects who received 48 weeks of therapy with EPIVIR-HBV in combination with pegylated interferon developed YMDD substitutions less frequently than subjects treated with EPIVIR-HBV alone (1 of 173 [1%] versus 32 of 179 [18%] in HBeAg-negative subjects; 9 of 256 [4%] versus 69 of 254 [27%] in HBeAg-positive subjects).

Several clinical studies have evaluated alternative regimens in subjects who failed EPIVIR-HBV due to development of lamivudine resistance. These studies demonstrated a higher rate of viral suppression and decreased development of viral resistance compared with continuation of monotherapy with EPIVIR-HBV.

Pediatric Subjects: In a controlled trial in pediatric subjects, YMDD-mutant HBV was detected in 31 of 166 (19%) subjects receiving EPIVIR-HBV for 52 weeks. For a subgroup that remained on therapy with EPIVIR-HBV in a follow-up trial, YMDD substitutions increased from 24% (29 of 121) at 12 months to 59% (68 of 115) at 24 months and 64% (66 of 103) at 36 months of treatment with EPIVIR-HBV.

Cross-Resistance

HBV containing lamivudine resistance-associated substitutions (rtL180M, rtM204I, rtM204V, rtL180M and rtM204V, rtV173L and rtL180M and rtM204V) retain susceptibility to adefovir dipivoxil but have reduced susceptibility to entecavir (greater than 30-fold) and telbivudine (greater than 100-fold). The lamivudine resistance-associated

substitution rtA181T results in diminished response to adefovir and telbivudine. Similarly, HBV with entecavir resistance-associated substitutions (rtI169T and rtM250V, rtT184G and rtS202I) have greater than 1,000-fold reductions in susceptibility to lamivudine.

13 NONCLINICAL TOXICOLOGY

13.1 Carcinogenesis, Mutagenesis, Impairment of Fertility

Carcinogenesis

Long-term carcinogenicity studies with lamivudine in mice and rats showed no evidence of carcinogenic potential at exposures up to 34 times (mice), and 113 and 187 times (male and female rats, respectively) those observed in humans at the recommended therapeutic dose for chronic hepatitis B.

Mutagenesis

Lamivudine was mutagenic in an L5178Y mouse lymphoma assay and clastogenic in a cytogenetic assay using cultured human lymphocytes. Lamivudine was not mutagenic in a microbial mutagenicity assay, in an in vitro cell transformation assay, in a rat micronucleus test, in a rat bone marrow cytogenetic assay, and in an assay for unscheduled DNA synthesis in rat liver.

Impairment of Fertility

Lamivudine did not affect male or female fertility in rats at oral doses up to 4,000 mg per kg per day, associated with concentrations approximately 70 times (male) or 104 times (females) higher than the concentrations (C_{max}) in humans at the dose of 100 mg [see *Use in Specific Populations (8.1)*].

14 CLINICAL STUDIES

14.1 Adult Subjects

The safety and efficacy of EPIVIR-HBV 100 mg once daily versus placebo were evaluated in 3 controlled trials in subjects with compensated chronic hepatitis B virus infection. All subjects were aged 16 years or older and had chronic hepatitis B virus infection (serum HBsAg-positive for at least 6 months) accompanied by evidence of HBV replication (serum HBeAg-positive and positive for serum HBV DNA) and persistently elevated ALT levels and/or chronic inflammation on liver biopsy compatible with a diagnosis of chronic viral hepatitis. The results of these trials are summarized below.

- Trial 1 was a randomized, double-blind trial of EPIVIR-HBV 100 mg once daily versus placebo for 52 weeks followed by a 16-week no-treatment period in 141 treatment-naïve U.S. subjects.
- Trial 2 was a randomized, double-blind, 3-arm trial that compared EPIVIR-HBV 25 mg once daily versus EPIVIR-HBV 100 mg once daily versus placebo for 52 weeks in 358 Asian subjects.
- Trial 3 was a randomized, partially-blind trial conducted primarily in North America and Europe in 238 subjects who had ongoing evidence of active chronic hepatitis B despite previous treatment with interferon alfa. The trial compared EPIVIR-HBV 100 mg once daily for 52 weeks, followed by either EPIVIR-HBV 100 mg or

matching placebo once daily for 16 weeks (Arm 1), versus placebo once daily for 68 weeks (Arm 2).

Principal endpoint comparisons for the histologic and serologic outcomes in subjects receiving EPIVIR-HBV (100 mg daily) or placebo in these trials are shown in the following tables.

Table 7. Histologic Response at Week 52 among Adult Subjects Receiving EPIVIR-HBV 100 mg Once Daily or Placebo

Assessment	Trial 1		Trial 2		Trial 3	
	EPIVIR-HBV (n = 62)	Placebo (n = 63)	EPIVIR-HBV (n = 131)	Placebo (n = 68)	EPIVIR-HBV (n = 110)	Placebo (n = 54)
Improvement ^a	55%	25%	56%	26%	56%	26%
No Improvement	27%	59%	36%	62%	25%	54%
Missing Data	18%	16%	8%	12%	19%	20%

^a Improvement was defined as a greater than or equal to 2-point decrease in the Knodell Histologic Activity Index (HAI) at Week 52 compared with pretreatment HAI. Subjects with missing data at baseline were excluded.

Table 8. HBeAg Seroconverters^a at Week 52 among Adult Subjects Receiving EPIVIR-HBV 100 mg Once Daily or Placebo

Seroconversion	Trial 1		Trial 2		Trial 3	
	EPIVIR-HBV (n = 63)	Placebo (n = 69)	EPIVIR-HBV (n = 140)	Placebo (n = 70)	EPIVIR-HBV (n = 108)	Placebo (n = 53)
Seroconverters	17%	6%	16%	4%	15%	13%

^a Three-component seroconversion was defined as Week 52 values showing loss of HBeAg, gain of HBeAb, and reduction of HBV DNA to below the solution-hybridization assay limit. Subjects with negative baseline HBeAg or HBV DNA assay were excluded from the analysis.

Normalization of serum ALT levels was more frequent with treatment of EPIVIR-HBV compared with placebo in Trials 1, 2, and 3.

The majority of subjects treated with EPIVIR-HBV showed a decrease of HBV DNA to below the assay limit early in the course of therapy. However, reappearance of assay-detectable HBV DNA during treatment with EPIVIR-HBV was observed in approximately one-third of subjects after this initial response.

14.2 Pediatric Subjects

The safety and efficacy of EPIVIR-HBV were evaluated in a double-blind clinical trial in 286 subjects aged 2 to 17 years, who were randomized (2:1) to receive 52 weeks of EPIVIR-HBV (3 mg per kg once daily to a maximum of 100 mg once daily) or placebo. All subjects had compensated chronic hepatitis B accompanied by evidence of hepatitis B virus replication (positive serum HBeAg and positive for serum HBV DNA by a research

branched-chain DNA assay) and persistently elevated serum ALT levels. The combination of loss of HBeAg and reduction of HBV DNA to below the assay limit of the research assay, evaluated at Week 52, was observed in 23% of subjects treated with EPIVIR-HBV and 13% of placebo-treated subjects. Normalization of serum ALT was achieved and maintained to Week 52 more frequently in subjects treated with EPIVIR-HBV compared with placebo (55% versus 13%). As in the adult controlled trials, most subjects treated with EPIVIR-HBV had decreases in HBV DNA below the assay limit early in treatment, but about one-third of subjects with this initial response had reappearance of assay-detectable HBV DNA during treatment. Adolescents (aged 13 to 17 years) showed less evidence of treatment effect than younger pediatric subjects.

16 HOW SUPPLIED/STORAGE AND HANDLING

EPIVIR-HBV tablets contain 100 mg of lamivudine, are butterscotch-colored, film-coated, biconvex, capsule-shaped tablets imprinted with “GX CG5” on one side. Packaged as follows:

Bottles of 60 tablets (NDC 0173-0662-00) with child-resistant closure.

Store EPIVIR-HBV tablets at 25°C (77°F); excursions permitted between 15°C and 30°C (59°F and 86°F) [see USP Controlled Room Temperature].

EPIVIR-HBV oral solution is a clear, colorless to pale yellow, strawberry-banana-flavored liquid. Each mL of the solution contains 5 mg of lamivudine. Packaged as follows:

Plastic bottles of 240 mL (NDC 0173-0663-00) with child-resistant closure. This product does not require reconstitution.

Store EPIVIR-HBV oral solution at controlled room temperature of 20°C to 25°C (68°F to 77°F) (see USP) in tightly closed bottles.

17 PATIENT COUNSELING INFORMATION

Advise the patient to read the FDA-approved patient labeling (Patient Information).

Severe Acute Exacerbation of Hepatitis after Discontinuation of Treatment

Inform patients that discontinuation of anti-hepatitis B therapy, including EPIVIR-HBV, may result in severe acute exacerbations of hepatitis B including decompensation of liver disease. Advise patients not to discontinue EPIVIR-HBV without first informing their healthcare provider [see *Warnings and Precautions (5.1)*].

Risk of Development of HIV-1 Resistance in Patients with HIV-1 Co-infection

Counsel patients on the importance of testing for HIV to avoid inappropriate therapy and development of resistance to HIV. HIV counseling and testing should be offered before starting EPIVIR-HBV and periodically during therapy. Inform patients that if they have or develop HIV infection and are not receiving effective HIV treatment, EPIVIR-HBV may increase the risk of development of resistance to HIV medications. Advise patients that EPIVIR-HBV contains a lower dose of the same active ingredient (lamivudine) as HIV drugs containing lamivudine [see *Dosage and Administration (2.1)*, *Warnings and Precautions (5.2)*].

Emergence of HBV Resistance

Inform patients that emergence of resistant hepatitis B virus and worsening of disease can occur during treatment. Patients should promptly report any new or worsening symptoms to their physician [*see Warnings and Precautions (5.3)*].

Lactic Acidosis/Severe Hepatomegaly with Steatosis

Advise patients that lactic acidosis and severe hepatomegaly with steatosis have been reported with use of nucleoside analogues and other antiretrovirals. Advise patients to stop taking EPIVIR-HBV if they develop clinical symptoms suggestive of lactic acidosis or pronounced hepatotoxicity [*see Warnings and Precautions (5.4)*].

Hepatitis B Transmission

Advise patients that treatment with EPIVIR-HBV has not been shown to reduce the risk of transmission of HBV to others through sexual contact or blood contamination.

Drug Interactions

Inform patients that EPIVIR-HBV may interact with some drugs; therefore, patients should be advised to report to their healthcare provider the use of any prescription or non-prescription medication or herbal products. Advise patients to avoid chronic use of sorbitol-containing prescription and over-the-counter medicines when possible. Taking EPIVIR-HBV with chronically administered sorbitol-containing medicines may decrease the concentrations of lamivudine [*see Drug Interactions (7.2)*].

Sucrose Content of EPIVIR-HBV Oral Solution

Advise diabetic patients that each 20-mL dose of EPIVIR-HBV oral solution contains 4 grams of sucrose (1 mL = 200 mg of sucrose) [*see Description (11)*].

Pregnancy Registry

Advise patients that there is a pregnancy exposure registry that monitors pregnancy outcomes in women exposed to EPIVIR-HBV during pregnancy [*see Use in Specific Populations (8.1)*].

Missed Dosage

Instruct patients that if they miss a dose of EPIVIR-HBV, to take it as soon as they remember. Advise patients not to double their next dose or take more than the prescribed dose [*see Dosage and Administration (2)*].

EPIVIR-HBV is a trademark owned by or licensed to the GSK group of companies.

EPIVIR is a trademark owned by or licensed to the ViiV Healthcare group of companies.

Distributed by:

GlaxoSmithKline
Research Triangle Park, NC 27709

©2021 GSK group of companies or its licensor.

EPH:9PI

PHARMACIST-DETACH HERE AND GIVE INSTRUCTIONS TO PATIENT

PATIENT INFORMATION

**EPIVIR-HBV (EP-i-veer h-b-v)
(lamivudine)
tablets**

**EPIVIR-HBV (EP-i-veer h-b-v)
(lamivudine)
oral solution**

**What is the most important information I should know about EPIVIR-HBV?
EPIVIR-HBV can cause serious side effects, including:**

- **Worsening liver disease.** Your hepatitis B infection may become worse after stopping treatment with EPIVIR-HBV. Worsening liver disease can be serious and may lead to death. If you stop treatment with EPIVIR-HBV, your healthcare provider will need to check your health and do blood tests to check your liver for at least several months after you stop taking EPIVIR-HBV.
- **Risk of HIV-1 resistance in people with unknown HIV-1 infection or in people with untreated HIV-1 infection.** If you have or get HIV-1 (Human Immunodeficiency Virus type 1) that is not being treated with medicines while taking EPIVIR-HBV, the HIV-1 virus may develop resistance to certain HIV-1 medicines and become harder to treat.
Your healthcare provider should offer you counseling and testing for HIV-1 infection before you start treatment for hepatitis B with EPIVIR-HBV and during treatment.
EPIVIR-HBV tablets and EPIVIR-HBV oral solution contain a lower dose of lamivudine than other medicines that contain lamivudine and are used to treat HIV-1 infection.
- **Resistant Hepatitis B Virus (HBV).** The hepatitis B virus can change (mutate) during your treatment with EPIVIR-HBV and become harder to treat (resistant). If this happens, your liver disease can become worse and may lead to death. Tell your healthcare provider right away if you have any new symptoms.
- **For more information about side effects, see “What are the possible side effects of EPIVIR-HBV?”**

What is EPIVIR-HBV?

EPIVIR-HBV is a prescription medicine used to treat long-term (chronic) hepatitis B virus (HBV) when the disease is progressing and there is liver swelling (inflammation).

It is not known if EPIVIR-HBV is safe and effective in:

- people with chronic HBV who have a severely damaged liver that is unable to work properly (decompensated liver disease)
- people with HIV-1, hepatitis C virus, or hepatitis D (delta) virus
- people who have had a liver transplant
- children with chronic HBV less than 2 years of age

EPIVIR-HBV does not stop you from spreading HBV to others by sex, sharing needles, or being exposed to your blood. Avoid doing things that can spread HBV infection to others.

Do not take EPIVIR-HBV:

- if you are allergic to lamivudine or any of the ingredients in EPIVIR-HBV. See the end of this Patient Information leaflet for a complete list of ingredients in EPIVIR-HBV.

Before taking EPIVIR-HBV, tell your healthcare provider about all of your medical conditions, including if you:

- have HIV-1 infection
- have kidney problems
- have diabetes. Each 20-mL dose (100 mg) of EPIVIR-HBV oral solution contains 4 grams of sucrose.
- are pregnant or plan to become pregnant. It is not known if EPIVIR-HBV will harm your unborn baby.

Pregnancy Registry. There is a pregnancy registry for women who take antiviral medicines during pregnancy. The purpose of this registry is to collect information about the health of you and your baby. Talk to your healthcare provider about how you can take part in this registry.

- are breastfeeding or plan to breastfeed. EPIVIR-HBV can pass into your breast milk and may harm your baby. You and your healthcare provider should decide if you will take EPIVIR-HBV or breastfeed.

Tell your healthcare provider about all the medicines you take, including prescription and over-the-counter medicines, vitamins, and herbal supplements. Some medicines interact with EPIVIR-HBV. Keep a list of your medicines to show your healthcare provider and pharmacist.

- You can ask your healthcare provider or pharmacist for a list of medicines that interact with EPIVIR-HBV.
- **Do not start taking a new medicine without telling your healthcare provider.** Your healthcare provider can tell you if it is safe to take EPIVIR-HBV with other medicines.

EPIVIR-HBV should not be taken if you also take other medicines that contain lamivudine or emtricitabine.

How should I take EPIVIR-HBV?

- Take EPIVIR-HBV exactly as your healthcare provider tells you to take it.
- Do not change your dose or stop taking EPIVIR-HBV without talking with your healthcare provider
- If you miss a dose of EPIVIR-HBV, take it as soon as you remember. Do not take 2 doses at the same time or take more than what your healthcare provider tells you to take.
- Stay under the care of a healthcare provider during treatment with EPIVIR-HBV.
- EPIVIR-HBV may be taken with or without food.
- Your healthcare provider may prescribe a lower dose if you have problems with your kidneys.
- For children 2 to 17 years of age, your healthcare provider will prescribe a dose of EPIVIR-HBV based on your child's body weight.
- Tell your healthcare provider if you or your child has trouble swallowing tablets. EPIVIR-HBV also comes as a liquid (oral solution).
- If you take too much EPIVIR-HBV, call your healthcare provider or go to the nearest hospital emergency room right away.

What are the possible side effects of EPIVIR-HBV?

EPIVIR-HBV may cause serious side effects, including:

- **See "What is the most important information I should know about EPIVIR-HBV?"**
- **Too much lactic acid in your blood (lactic acidosis).** Lactic acidosis is a serious medical emergency that can lead to death. **Call your healthcare provider right away if you get any of the following symptoms that could be signs of lactic acidosis:**
 - o feel very weak or tired
 - o unusual (not normal) muscle pain
 - o trouble breathing
 - o stomach pain with nausea and vomiting
 - o feel cold, especially in your arms and legs
 - o feel dizzy or light-headed
 - o have a fast or irregular heartbeat
- **Severe liver problems.** Severe liver problems can happen in people who take EPIVIR-HBV or similar medicines. In some cases, these severe liver problems can lead to death. Your liver may become large (hepatomegaly) and you may develop fat in your liver (steatosis) when you take EPIVIR-HBV. **Call your healthcare provider right away if you get any of the following signs or symptoms of liver problems:**
 - o your skin or the white part of your eyes turns yellow (jaundice)
 - o dark or "tea-colored" urine
 - o light-colored stools (bowel movements)
 - o loss of appetite for several days or longer
 - o nausea
 - o pain, aching, or tenderness on the right side of your stomach area

You may be more likely to get lactic acidosis or severe liver problems if you are female or very overweight (obese).

The most common side effects of EPIVIR-HBV include ear, nose, and throat infections; sore throat; and diarrhea.

Tell your healthcare provider if you have any side effect that bothers you or that does not go away.

These are not all the possible side effects of EPIVIR-HBV. Call your doctor for medical advice about side effects. You may report side effects to FDA at 1-800-FDA-1088.

How should I store EPIVIR-HBV?

- Store EPIVIR-HBV tablets and oral solution at room temperature between 68°F to 77°F (20°C to 25°C).
- Keep bottles of EPIVIR-HBV oral solution tightly closed.

Keep EPIVIR-HBV and all medicines out of the reach of children.

General information about the safe and effective use of EPIVIR-HBV

Medicines are sometimes prescribed for purposes other than those listed in a Patient Information leaflet. Do not use EPIVIR-HBV for a condition for which it was not prescribed. Do not give EPIVIR-HBV to other people, even if they have the same symptoms that you have. It may harm them. You can ask your pharmacist or

healthcare provider for information about EPIVIR-HBV that is written for health professionals.

For more information call 1-888-825-5249.

What are the ingredients in EPIVIR-HBV?

Active ingredient: lamivudine

Inactive ingredients:

EPIVIR-HBV tablets: hypromellose, macrogol 400, magnesium stearate, microcrystalline cellulose, polysorbate 80, red iron oxide, sodium starch glycolate, titanium dioxide, and yellow iron oxide.

EPIVIR-HBV oral solution: artificial strawberry and banana flavors, citric acid (anhydrous), methylparaben, propylene glycol, propylparaben, sodium citrate (dihydrate), and sucrose (200 mg per mL).

Trademarks are owned by or licensed to the GSK group of companies.

Distributed by:

GlaxoSmithKline, Research Triangle Park, NC 27709

©2021 GSK group of companies or its licensor.

EPH:9PIL

This Patient Information has been approved by the U.S. Food and Drug Administration.

Revised: 12/2021

PRINCIPAL DISPLAY PANEL

NDC 0173-0662-00

Epivir-HBV

(lamivudine)

Tablets

100 mg

60 Tablets

Each tablet contains 100 mg of lamivudine.

R_x only

See prescribing information for dosage information.

Store at 25°C (77°F); excursions permitted to 15° to 30°C (59° to 86°F) [see USP Controlled Room Temperature].

Do not use if printed safety seal under cap is broken or missing.

Distributed by:

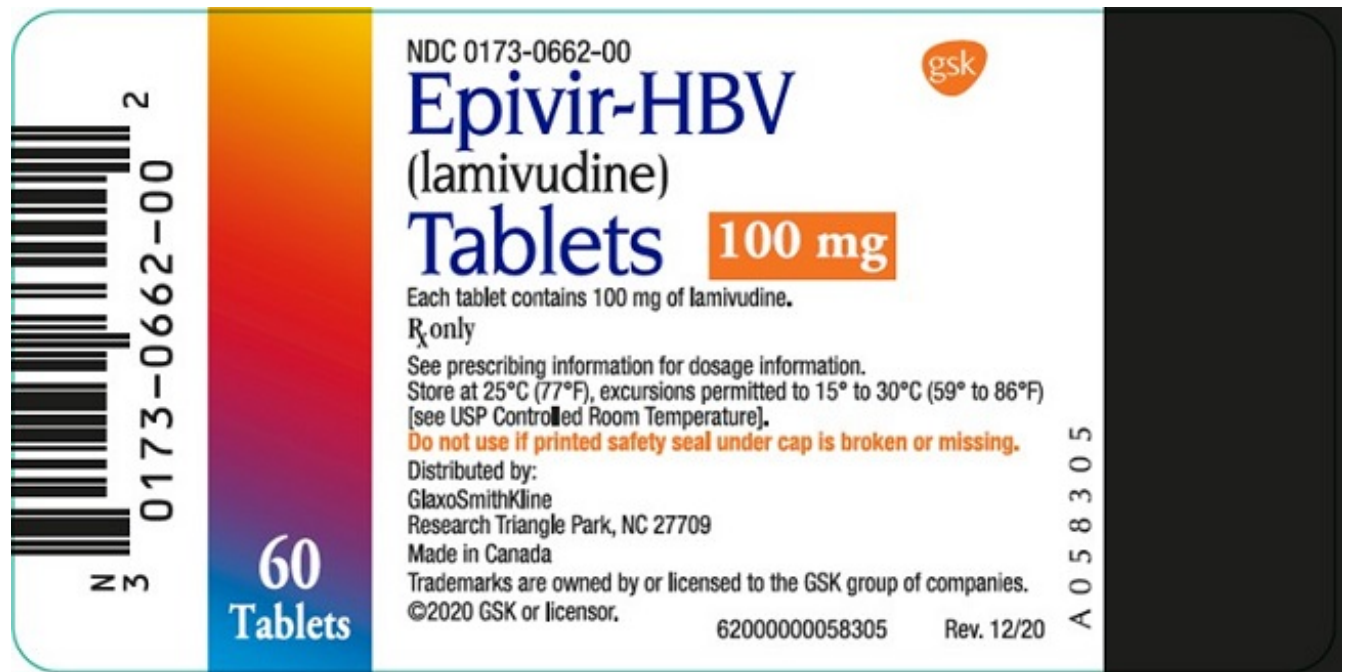
GlaxoSmithKline

Research Triangle Park, NC 27709\

Made in Canada

Trademarks are owned by or licensed to the GSK group of companies.

©2020 GSK or licensor.



PRINCIPAL DISPLAY PANEL

NDC 0173-0663-00

Epivir-HBV

(lamivudine)

Oral Solution

5 mg/mL

Each mL contains 5 mg of lamivudine.

R_x only

240 mL

Made in Canada

©2020 GSK group of companies or its licensor.

62000000052473 Rev. 9/20

NDC 0173-0663-00



Epivir-HBV

(lamivudine)

Oral Solution

5 mg/mL

Each mL contains
5 mg of lamivudine.

R_x only

240 mL

EPIVIR HBV

lamivudine tablet, film coated

Product Information

Product Type	HUMAN PRESCRIPTION DRUG	Item Code (Source)	NDC:0173-0662
Route of Administration	ORAL		

Active Ingredient/Active Moiety

Ingredient Name	Basis of Strength	Strength
LAMIVUDINE (UNII: 2T8Q726O95) (LAMIVUDINE - UNII:2T8Q726O95)	LAMIVUDINE	100 mg

Inactive Ingredients				
Ingredient Name			Strength	
HYPROMELLOSE, UNSPECIFIED (UNII: 3NXW29V3WO)				
POLYETHYLENE GLYCOL, UNSPECIFIED (UNII: 3WJQ0SDW1A)				
MAGNESIUM STEARATE (UNII: 70097M6I3O)				
MICROCRYSTALLINE CELLULOSE (UNII: OP1R32D61U)				
POLYSORBATE 80 (UNII: 6OZP39ZG8H)				
FERRIC OXIDE RED (UNII: 1K09F3G675)				
SODIUM STARCH GLYCOLATE TYPE A POTATO (UNII: 5856J3G2A2)				
TITANIUM DIOXIDE (UNII: 15FIX9V2JP)				
FERRIC OXIDE YELLOW (UNII: EX438O2MRT)				
Product Characteristics				
Color	YELLOW (butterscotch-colored)	Score	no score	
Shape	OVAL (capsule-shaped)	Size	11mm	
Flavor		Imprint Code	GX;CG5	
Contains				
Packaging				
#	Item Code	Package Description	Marketing Start Date	Marketing End Date
1	NDC:0173-0662-00	60 in 1 BOTTLE; Type 0: Not a Combination Product	12/17/1998	
Marketing Information				
Marketing Category		Application Number or Monograph Citation	Marketing Start Date	Marketing End Date
NDA		NDA021003	12/17/1998	

EPIVIR HBV			
lamivudine solution			
Product Information			
Product Type	HUMAN PRESCRIPTION DRUG	Item Code (Source)	NDC:0173-0663
Route of Administration	ORAL		
Active Ingredient/Active Moiety			
Ingredient Name		Basis of Strength	Strength
LAMIVUDINE (UNII: 2T8Q726O95) (LAMIVUDINE - UNII:2T8Q726O95)		LAMIVUDINE	5 mg in 1 mL

Inactive Ingredients				
Ingredient Name			Strength	
ANHYDROUS CITRIC ACID (UNII: XF417D3PSL)				
METHYLPARABEN (UNII: A2I8C7HI9T)				
PROPYLENE GLYCOL (UNII: 6DC9Q167V3)				
PROPYLPARABEN (UNII: Z8IX2SC1OH)				
TRISODIUM CITRATE DIHYDRATE (UNII: B22547B95K)				
SUCROSE (UNII: C151H8M554)				
Product Characteristics				
Color	YELLOW (colorless to yellow)		Score	
Shape			Size	
Flavor	STRAWBERRY (strawberry-banana)		Imprint Code	
Contains				
Packaging				
#	Item Code	Package Description	Marketing Start Date	Marketing End Date
1	NDC:0173-0663-00	240 mL in 1 BOTTLE; Type 0: Not a Combination Product	12/23/1998	
Marketing Information				
Marketing Category		Application Number or Monograph Citation	Marketing Start Date	Marketing End Date
NDA		NDA021004	12/23/1998	

Labeler - GlaxoSmithKline LLC (167380711)

Revised: 12/2021

GlaxoSmithKline LLC