

CHERRY COUGH DROPS- menthol lozenge

CVS Pharmacy

Disclaimer: Most OTC drugs are not reviewed and approved by FDA, however they may be marketed if they comply with applicable regulations and policies. FDA has not evaluated whether this product complies.

Menthol 5.8mg

Active Ingredient (in each drop)

Menthol 5.8 mg

Cough suppressant/Oral anesthetic

Uses temporarily relieves:

cough as may occur with a cold

occasional minor irritation and sore throat

Warnings

Sore throat warning: if sore throat is severe, persist for more than 2 days, is accompanied or followed by fever, headache, rash, swelling, nausea, or vomiting, consult a doctor promptly. If sore mouth symptoms do not improve in 7 days, see your dentist or doctor promptly. These symptoms may be serious.

Ask a doctor before use if you have

persistant or chronic cough such as occurs with smoking, asthma, or emphysema

cough accompanied by excessive phlegm (mucus)

Stop use and consult doctor if

cough persists for more than 7 days, tends to recur, or is accompanied by fever, rash, or persistant headache. These could be signs of a serious condition.

sore throat is severe, or irritation, pain or redness lasts or worsens

sore mouth does not improve in 7 days

If pregnant or breast-feeding, ask a health professional before use.

Keep out of reach of children.

Directions

Adults and children 5 years of age and over: allow 1 drop to dissolve slowly in mouth. May be repeated every two hours as necessary or as directed by a doctor.

Children under 5 years of age: ask a doctor

Inactive ingredients: Corn starch, corn syrup, eucalyptus oil, FD&C red #40, glycerin, medium chain triglycerides, natural and artificial flavors, soybean oil, sucrose and water.

Questions? or to report an adverse event call 1-800-245-2898 Monday - Friday, 9Am to 4PM EST

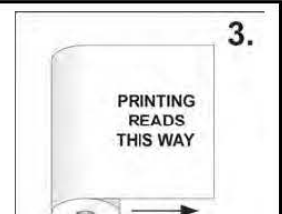


BESTCO - 32
Label# 517654

Graphic# 312738

Description: CVS 30CT CHERRY
Part#: 501998
Group:
Template: 31454

Size: 15.750000" x 4.583300"
Die #: None
Stock: Film Structure



Old Label#: 457387

Rewind #: 3

Colors:

Proof Out: 05/18/15

F=Front B=Back L=Flood S=Spot M=Match P=Process PR=Primer UV=UV Ink %=Screen V=Varnish ADH=Adhesive LAM=Laminant FB=Front Base BB=Back Base X=Seamless

MAG - FP

186 - F

WHT - FL

PRYL - FP

177 - FX

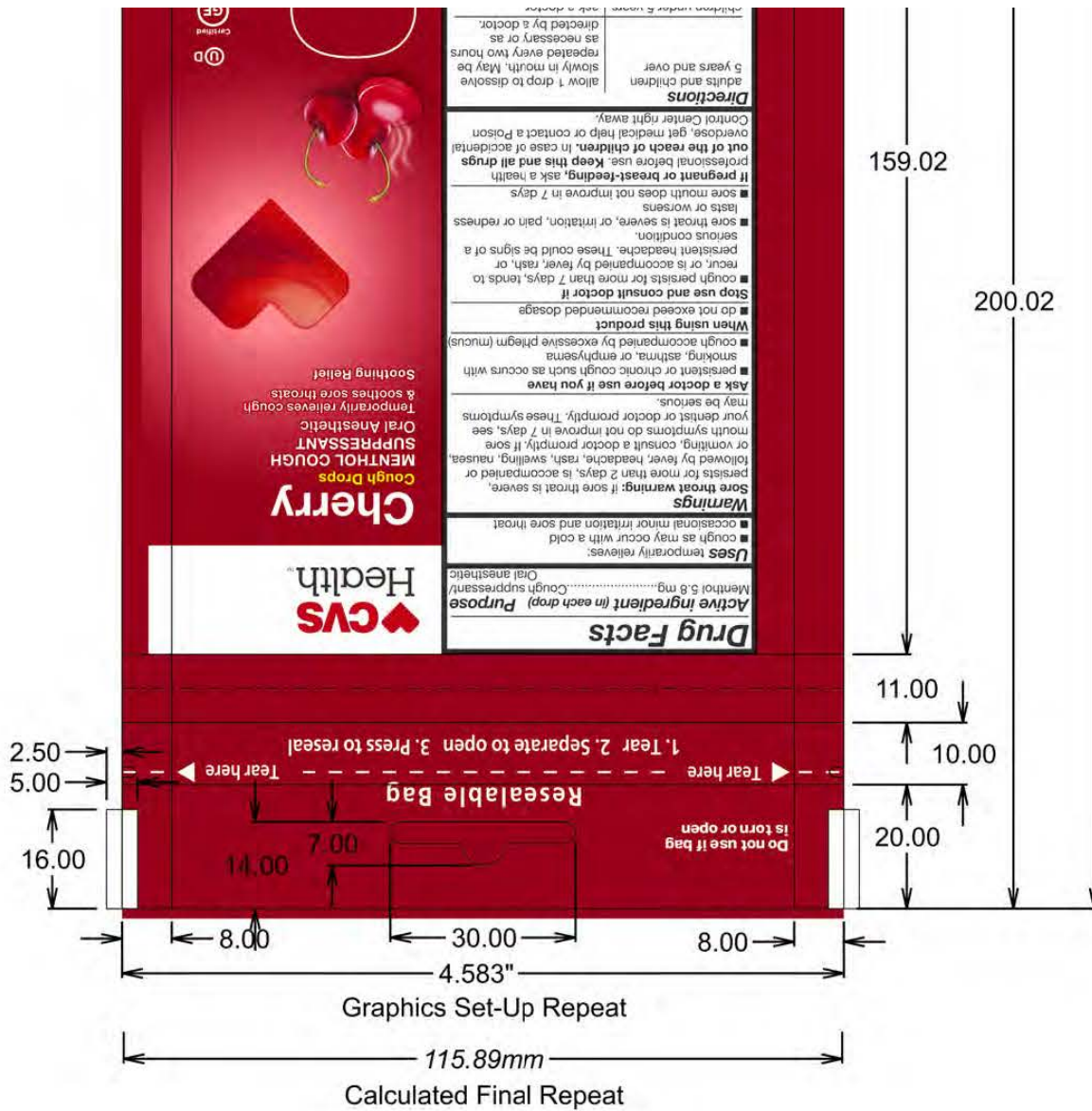
BLK - FP

186 - F%X

PROOF INDICATES COLOR BREAK ONLY AND MAY NOT ACCURATELY REFLECT ACTUAL PRODUCTION COLORS.

Label:517654 Date:5/15/2015 Time:16:39:06





CHERRY COUGH DROPS

menthol lozenge

Product Information

Product Type	HUMAN OTC DRUG	Item Code (Source)	NDC:59 779-655
Route of Administration	ORAL		

Active Ingredient/Active Moiety

Ingredient Name	Basis of Strength	Strength
MENTHOL (UNII: L7T10EIP3A) (MENTHOL - UNII:L7T10EIP3A)	MENTHOL	5.8 mg

Inactive Ingredients

Ingredient Name	Strength
WATER (UNII: 059QF0KO0R)	

Product Characteristics

Color	red	Score	no score
Shape	OVAL	Size	16mm
Flavor	CHERRY	Imprint Code	B
Contains			

Packaging

#	Item Code	Package Description	Marketing Start Date	Marketing End Date
1	NDC:59779-655-30	30 in 1 BAG; Type 0: Not a Combination Product	05/18/2015	



Marketing Information

Marketing Category	Application Number or Monograph Citation	Marketing Start Date	Marketing End Date
OTC monograph final	part341	05/18/2015	

Labeler - CVS Pharmacy (062312574)

Registrant - BestCo Inc. (002149136)

Establishment

Name	Address	ID/FEI	Business Operations
BestCo Inc.		002149136	manufacture(59779-655)

Revised: 12/2019

CVS Pharmacy