

GLYCOPYRROLATE - glycopyrrolate tablet

Heritage Pharmaceuticals Inc. d/b/a Avet Pharmaceuticals Inc.

HIGHLIGHTS OF PRESCRIBING INFORMATION

These highlights do not include all the information needed to use GLYCOPYRROLATE TABLETS safely and effectively. See full prescribing information for GLYCOPYRROLATE TABLETS. GLYCOPYRROLATE tablets for oral use
Initial U.S. Approval: 1961

INDICATIONS AND USAGE

Glycopyrrolate is anticholinergics indicated in adults to reduce symptoms of a peptic ulcer as an adjunct to treatment of peptic ulcer. (1)

Limitations of Use:

Not indicated as monotherapy for the treatment of peptic ulcer because effectiveness in peptic ulcer healing has not been established. (1)

DOSAGE AND ADMINISTRATION

Important Dosing Information (2.1)

- Glycopyrrolate tablets 2 mg are not recommended for patients initiating treatment or receiving maintenance treatment with glycopyrrolate tablets 1 mg or another 1 mg dosage strength of oral glycopyrrolate tablets.

Recommended Dosage (2.2)

- The recommended initial dosage of glycopyrrolate tablets 1 mg is 1 mg three times daily (in the morning, early afternoon, and at bedtime). Some patients may require 2 mg at bedtime to assure overnight control of symptoms. For maintenance, a dosage of 1 mg twice a day is frequently adequate.
- The recommended dosage of glycopyrrolate tablets 2 mg for adults is 2 mg two or three times daily at equally spaced intervals.
- The maximum recommended daily dosage is 8 mg.
- Use the lowest effective dosage of glycopyrrolate to control symptoms. If patients can be titrated to a lower dose, switch from glycopyrrolate tablets 2 mg to glycopyrrolate tablets 1 mg or another 1 mg oral tablet of glycopyrrolate.

DOSAGE FORMS AND STRENGTHS

- Tablets: 1 mg (functionally scored) and 2 mg (functionally scored) (3)

CONTRAINDICATIONS

- Patients at risk for anticholinergic toxicity due to various underlying medical conditions. (4, 5.1, 5.2, 5.3)
- Hypersensitivity to glycopyrrolate or the inactive ingredients. (4)

WARNINGS AND PRECAUTIONS

- Precipitation of Acute Glaucoma: May increase intraocular pressure; if symptoms occur, discontinue use and promptly seek medical care. (4, 5.1)
- Partial or Complete Mechanical Intestinal Obstruction: Diarrhea may be an early symptom, especially in patients with ileostomy or colostomy. If the obstruction is suspected, discontinue use and evaluate the patient for obstruction. (4, 5.2)
- GI Adverse Reactions Due to Decreased GI Motility: Delayed gastric emptying, constipation, and intestinal pseudo-obstruction may occur and precipitate or aggravate paralytic ileus and toxic megacolon; not recommended for use with anticholinergics or other medications that decrease GI peristalsis. (4, 5.3, 7.1)
- Cognitive and Visual Adverse Reactions: May impair mental and/or physical function. Inform patients not to operate motor vehicles or perform other hazardous tasks until reasonably certain they are not adversely affected; discontinue use if signs or symptoms develop. (5.4, 7.1)
- Heat Prostration at High Environmental Temperatures: Heat prostration resulting in fever and heatstroke can occur, especially in geriatric patients. Avoid exposure to hot or very warm environmental temperatures. (5.5, 5.7)
- Other Conditions Exacerbated by Anticholinergic Adverse Reactions: Use is not recommended in patients with autonomic neuropathy, hyperthyroidism, cardiac disease, hiatal hernia, etc. (5.6, 7.1)
- Increased Risk of Anticholinergic Adverse Reactions in Geriatric Patients: Complications include urinary

retention, bowel obstruction, heat prostration, arrhythmias, delirium, and falls or fractures. Not recommended in geriatric patients and may be contraindicated in some patients with underlying medical conditions. (4, 5.7, 8.5)

ADVERSE REACTIONS

Adverse reactions include blurred vision, drowsiness, decreased sweating, flushing, vomiting, constipation, dry mouth, tachycardia, and urinary retention. (6)

To report SUSPECTED ADVERSE REACTIONS, contact Avet Pharmaceuticals Inc. at 1-866-901-3784 or FDA at 1-800-FDA-1088 or www.fda.gov/medwatch

DRUG INTERACTIONS

- Other Anticholinergic Drugs: Concomitant use is not recommended. (5.3, 5.4, 5.6, 7.1)
- Drugs with Altered Absorption due to Decreased GI Motility: Concomitant use is not recommended. (7.2)
- GI Toxicity with Solid Oral Dosage Forms of Potassium Chloride: Concomitant use is not recommended. (7.3)

USE IN SPECIFIC POPULATIONS

- Renal Impairment: Monitor patients with renal impairment; if anticholinergic adverse reactions occur, discontinue use. (8.6)

See 17 for PATIENT COUNSELING INFORMATION.

Revised: 11/2022

FULL PRESCRIBING INFORMATION: CONTENTS*

1 INDICATIONS AND USAGE

2 DOSAGE AND ADMINISTRATION

2.1 Important Dosing Information

2.2 Recommended Dosage

3 DOSAGE FORMS AND STRENGTHS

4 CONTRAINDICATIONS

5 WARNINGS AND PRECAUTIONS

5.1 Precipitation of Acute Glaucoma

5.2 Partial or Complete Mechanical Intestinal Obstruction

5.3 Gastrointestinal Adverse Reactions Due to Decreased Gastrointestinal Motility

5.4 Cognitive and Visual Adverse Reactions

5.5 Heat Prostration at High Environmental Temperatures

5.6 Other Conditions Exacerbated by Anticholinergic Adverse Reactions

5.7 Increased Risk of Anticholinergic Adverse Reactions in Geriatric Patients

6 ADVERSE REACTIONS

7 DRUG INTERACTIONS

7.1 Other Anticholinergic Drugs

7.2 Drugs with Altered Absorption due to Decreased Gastrointestinal Motility and Increased Transit Time

7.3 Gastrointestinal Toxicity with Solid Dosage Forms of Potassium Chloride

8 USE IN SPECIFIC POPULATIONS

8.1 Pregnancy

8.2 Lactation

8.4 Pediatric Use

8.5 Geriatric Use

8.6 Renal Impairment

10 OVERDOSAGE

11 DESCRIPTION

12 CLINICAL PHARMACOLOGY

12.1 Mechanism of Action

12.2 Pharmacodynamics

12.3 Pharmacokinetics

13 NONCLINICAL TOXICOLOGY

13.1 Carcinogenesis, Mutagenesis, Impairment of Fertility

16 HOW SUPPLIED/STORAGE AND HANDLING

17 PATIENT COUNSELING INFORMATION

* Sections or subsections omitted from the full prescribing information are not listed.

FULL PRESCRIBING INFORMATION

1 INDICATIONS AND USAGE

Glycopyrrolate is indicated in adults to reduce symptoms of a peptic ulcer as an adjunct to treatment of peptic ulcer.

Limitations of Use

Glycopyrrolate is not indicated as monotherapy for the treatment of peptic ulcer because effectiveness in peptic ulcer healing has not been established.

2 DOSAGE AND ADMINISTRATION

2.1 Important Dosing Information

- Glycopyrrolate tablets 2 mg are not recommended for patients in whom a lower dosage strength of oral glycopyrrolate (e.g., 1 mg tablet strength) is appropriate for initial or maintenance treatment because the dosage strength of glycopyrrolate tablets 2 mg may exceed the recommended initial and maintenance dosage of oral glycopyrrolate tablets.

2.2 Recommended Dosage

- The recommended initial dosage of glycopyrrolate tablets 1 mg for adults is 1 mg three times daily (in the morning, early afternoon, and at bedtime). Some patients may require 2 mg at bedtime to assure overnight control of symptoms. For maintenance, a dosage of 1 mg twice a day is frequently adequate.
- The recommended dosage of glycopyrrolate tablets 2 mg for adults is 2 mg two or three times daily at equally spaced intervals.
- The maximum recommended daily dosage of glycopyrrolate is 8 mg.
- Use the lowest effective dosage of glycopyrrolate to control symptoms. If patients can be titrated to a lower dose, switch from glycopyrrolate tablets 2 mg to glycopyrrolate tablets 1 mg or another 1 mg oral tablet of glycopyrrolate.

3 DOSAGE FORMS AND STRENGTHS

Tablets:

- Glycopyrrolate Tablets USP, 1 mg are white to off-white, round, flat beveled edge tablet debossed with “MCR 117” separated by break line on one side and plain on other side.
Each tablet contains: Glycopyrrolate, USP 1 mg.
- Glycopyrrolate Tablets USP, 2 mg are white to off white, round, flat beveled edge tablet debossed with “AC 108” separated by break line on one side and plain on other side.
Each tablet contains: Glycopyrrolate, USP 2 mg.

4 CONTRAINDICATIONS

Glycopyrrolate tablets are contraindicated in:

- Patients at risk for anticholinergic toxicity due to an underlying medical condition, including:
 - Glaucoma [*see Warnings and Precautions (5.1)*]
 - Obstructive uropathies, including prostatic hypertrophy
 - Mechanical obstructive diseases of the gastrointestinal tract (e.g., pyloroduodenal stenosis, strictures) [*see Warnings and Precautions (5.2)*]
 - Gastrointestinal motility disorders (e.g., achalasia, paralytic ileus, intestinal atony) [*see Warnings and Precautions (5.3)*]
 - Bleeding gastrointestinal ulcer
 - Active inflammatory or infectious colitis which can lead to toxic megacolon
 - History of or current toxic megacolon
 - Myasthenia gravis
- Patients with a hypersensitivity to glycopyrrolate or any of the inactive ingredients in glycopyrrolate tablets [*see Adverse Reactions (6) and Description (11)*].

5 WARNINGS AND PRECAUTIONS

5.1 Precipitation of Acute Glaucoma

Glycopyrrolate may cause increased intraocular pressure in patients with glaucoma and reduce the effects of antiglaucoma agents. Instruct patients to discontinue glycopyrrolate tablets and promptly seek medical care if they experience symptoms of acute angle-closure glaucoma (pain and reddening of the eyes accompanied by dilated pupils) [*see Contraindications (4)*].

5.2 Partial or Complete Mechanical Intestinal Obstruction

Glycopyrrolate may worsen intestinal mechanical obstruction, and diarrhea may be an early symptom of incomplete intestinal obstruction, especially in patients with ileostomy or colostomy. If partial or complete intestinal obstruction is suspected, discontinue the use of glycopyrrolate tablets and evaluate for potential intestinal obstruction [*see Contraindications (4)*].

5.3 Gastrointestinal Adverse Reactions Due to Decreased Gastrointestinal Motility

Glycopyrrolate reduces gastrointestinal motility and may result in delayed gastric emptying, constipation, and intestinal pseudo-obstruction and may precipitate or aggravate paralytic ileus and toxic megacolon [see *Contraindications (4)*]. The risk of gastrointestinal adverse reactions is further increased with the use of other anticholinergics and other medications that decrease gastrointestinal peristalsis.

Monitor patients for symptoms of decreased gastrointestinal motility. Concomitant use of glycopyrrolate tablets and other anticholinergics or other medications that decrease GI peristalsis is not recommended [see *Drug Interactions (7.2)*].

5.4 Cognitive and Visual Adverse Reactions

Glycopyrrolate may produce drowsiness and blurred vision and impair the mental and/or physical abilities required for the performance of hazardous tasks such as driving a motor vehicle, operating machinery, or performing other hazardous work [see *Adverse Reactions (6)*]. Concomitant use of other drugs that have anticholinergic properties may increase these effects [see *Drug Interactions (7.1)*].

Inform patients not to operate motor vehicles or other dangerous machinery or perform other hazardous tasks until they are reasonably certain that glycopyrrolate tablets does not affect them adversely.

Discontinue glycopyrrolate tablets if signs or symptoms of cognitive or visual impairment develop.

5.5 Heat Prostration at High Environmental Temperatures

In the presence of a high environmental temperature, heat prostration resulting in fever and heatstroke can occur with the use of glycopyrrolate tablets due to decreased sweating, particularly in geriatric patients [see *Adverse Reactions (6)*]. Advise patients to avoid exposure to hot or very warm environmental temperatures when taking glycopyrrolate tablets. Glycopyrrolate tablets are not recommended in geriatric patients [see *Warnings and Precautions (5.7)*].

5.6 Other Conditions Exacerbated by Anticholinergic Adverse Reactions

Glycopyrrolate tablets are not recommended in patients with other conditions exacerbated by anticholinergic adverse reactions (e.g., autonomic neuropathy, hyperthyroidism, cardiac disease, and hiatal hernia associated with reflux esophagitis) and in patients taking other anticholinergic medications [see *Drug Interactions (7.1)*].

5.7 Increased Risk of Anticholinergic Adverse Reactions in Geriatric Patients

Geriatric patients 65 years of age and older are at increased risk of anticholinergic adverse reactions that may lead to complications of urinary retention, bowel obstruction, heat prostration, arrhythmias, delirium, and falls or fractures. Glycopyrrolate tablets are not recommended in geriatric patients and may be contraindicated in some geriatric patients with underlying medical conditions [see

Contraindications (4), Warnings and Precautions (5.2, 5.5), Adverse Reactions (6) and Use in Specific Populations (8.5)].

6 ADVERSE REACTIONS

The following serious or otherwise important adverse reactions are discussed elsewhere in the labeling:

- Precipitation of Acute Glaucoma [*see Warnings and Precautions (5.1)*]
- Partial or Complete Mechanical Intestinal Obstruction [*see Warnings and Precautions (5.2)*]
- Gastrointestinal Adverse Reactions due to Decreased Gastrointestinal Motility [*see Warnings and Precautions (5.3)*]
- Cognitive and Visual Adverse Reactions [*see Warnings and Precautions (5.4)*]
- Heat Prostration at High Environmental Temperatures [*see Warnings and Precautions (5.5)*]
- Other Conditions Exacerbated by Anticholinergic Adverse Reactions [*see Warnings and Precautions (5.6)*]
- Increased Risk of Anticholinergic Adverse Reactions in Geriatric Patients [*see Warnings and Precaution (5.7)*]

The following adverse reactions associated with the use of glycopyrrolate, or other anticholinergic drugs, were identified in clinical studies or postmarketing reports. Because some of these reactions are reported voluntarily from a population of uncertain size, it is not always possible to reliably estimate their frequency or establish a causal relationship to drug exposure.

Cardiac Disorders: chest, pain, hypertension, tachycardia

Endocrine Disorders: decreased sweating

Eye Disorders: blurred vision, cycloplegia, dilatation of the pupil, increased ocular tension

Gastrointestinal Disorders: bloated feeling, constipation, dry mouth, dysgeusia, nausea, vomiting

Immune System Disorders: anaphylaxis [*see Contraindications (4)*]

Nervous System Disorders: agitation, dizziness, drowsiness, headache, insomnia, mental confusion, nervousness, weakness

Respiratory Disorders: respiratory depression, throat irritation

Renal and Urinary Disorders: urinary hesitancy, urinary retention

Reproductive System and Breast Disorders: impotence, suppression of lactation

Vascular Disorders: flushing

7 DRUG INTERACTIONS

7.1 Other Anticholinergic Drugs

There is potential for an additive interaction between glycopyrrolate and concomitantly used anticholinergic drugs (e.g., tricyclic antidepressants, anti-epileptics, class I antiarrhythmics, anti-spasmodics, amantadine) resulting in increased anticholinergic adverse reactions. Co-administration of antipsychotics with glycopyrrolate may lead to worsening of tardive dyskinesia. Glycopyrrolate tablets are not recommended in patients taking other anticholinergic drugs [*see Warnings and Precautions (5.3, 5.4, 5.6)*].

7.2 Drugs with Altered Absorption due to Decreased Gastrointestinal Motility and Increased Transit Time

Decreased gastrointestinal motility by glycopyrrolate may impact absorption of other drugs leading to increased or decreased drug exposure. Glycopyrrolate tablets are not recommended in patients taking other drugs that are affected by altered gastrointestinal motility [see *Warnings and Precautions* (5.3)].

7.3 Gastrointestinal Toxicity with Solid Dosage Forms of Potassium Chloride

Oral glycopyrrolate may worsen gastrointestinal mucosal injury reported with solid oral dosage forms of potassium chloride due to decreased gastric motility and increased transit time, leading to prolonged contact with the gastrointestinal mucosa. Glycopyrrolate tablets are not recommended in patients taking solid oral dosage forms of potassium chloride.

8 USE IN SPECIFIC POPULATIONS

8.1 Pregnancy

Risk Summary

Over decades of use, there is an absence of published data on orally administered glycopyrrolate in pregnant women, including an absence of any reports of a drug-associated risk of major birth defects, miscarriage, or other adverse maternal or fetal outcomes. In animal studies, at non-maternally toxic doses of oral glycopyrrolate, there were no adverse developmental effects in rats or rabbits. A pre- and post-natal development study of oral glycopyrrolate in rats showed a decrease in pup mean bodyweight that recovered post nursing, with no other developmental effects observed (see *Data*).

The estimated background risk of major birth defects and miscarriage for the indicated population is unknown. All pregnancies have a background risk of birth defect, loss, or other adverse outcomes. In the U.S. general population, the estimated background risk of major birth defects and miscarriage in clinically recognized pregnancies is 2% to 4% and 15% to 20%, respectively.

Data

Animal Data

At non-maternally toxic doses of oral glycopyrrolate, there were no effects on embryo-fetal development or toxicity in rats or rabbits. A pre- and post-natal development study of oral glycopyrrolate in rats showed a decrease in pup mean bodyweight that recovered post nursing, with no other developmental effects observed.

In a published reproductive and developmental study, male and female rats were administered glycopyrrolate in the diet at 0 mg/kg/day, 32.5 mg/kg/day, 63 mg/kg/day, and 130 mg/kg/day for 3 weeks to 5 weeks and through up to three consecutive litters. There was no indication of abnormalities in the pups of treated dams. There was a decreased rate of conception and in survival rate at weaning for all treated animals in a

dose-related manner. Diminished rates of conception may be due to diminished seminal secretion [see *Nonclinical Toxicology (13.1)*].

8.2 Lactation

Risk Summary

There are no data on the presence of glycopyrrolate in either human or animal milk, the effects on the breastfed infant, or the effects on milk production. As with other anticholinergic drugs, glycopyrrolate may cause suppression of lactation. The developmental and health benefits of breastfeeding should be considered along with the mother's clinical need for glycopyrrolate tablets and any potential adverse effects on the breastfed infant from glycopyrrolate tablets.

8.4 Pediatric Use

Safety and effectiveness in pediatric patients have not been established.

8.5 Geriatric Use

Geriatric patients 65 years of age and older may be more sensitive to the anticholinergic adverse reactions of glycopyrrolate leading to complications of urinary retention, bowel obstruction, heat prostration, arrhythmias, delirium, and falls or fractures; therefore, glycopyrrolate tablets are not recommended in geriatric patients and may be contraindicated in some geriatric patients with underlying medical conditions [see *Contraindications (4) and Warnings and Precautions (5)*].

8.6 Renal Impairment

Glycopyrrolate is substantially excreted by the kidney [see *Clinical Pharmacology (12.3)*]. Monitor patients with renal impairment for anticholinergic adverse reactions [see *Adverse Reactions (6)*]. If anticholinergic adverse reactions occur, discontinue glycopyrrolate tablets.

10 OVERDOSAGE

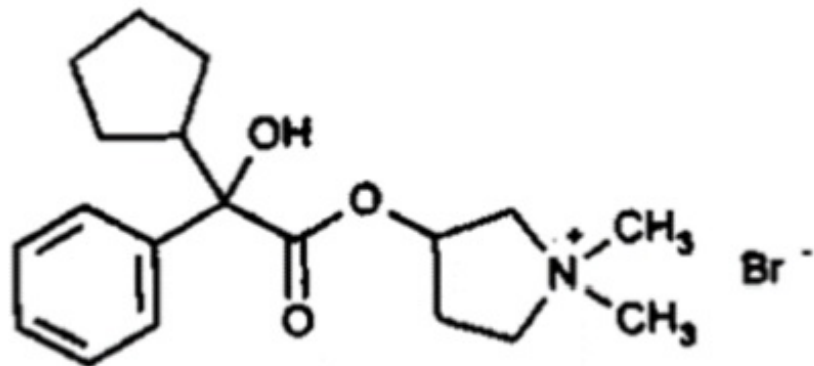
Signs and symptoms of glycopyrrolate overdose are related to excessive anti-muscarinic anticholinergic activity and are generally peripheral (e.g., flushing, hyperthermia, tachycardia, ileus, urinary retention, loss of ocular accommodation, and light sensitivity due to mydriasis), but central nervous system toxicity (agitation, seizures, hyperthermia) may also occur.

If over-exposure occurs, call the Poison Control Center at 1-800-222-1222 for current information on the management of glycopyrrolate poisoning and overdose.

Management of glycopyrrolate overdose is based upon presenting signs and symptoms, including close observation for severe or life-threatening complications which may require respiratory and cardiovascular monitoring and support. Consider administration of activated charcoal and/or use of a reversible anticholinesterase as appropriate or recommended by Poison Control.

11 DESCRIPTION

Glycopyrrolate tablets contain synthetic anticholinergic glycopyrrolate. Glycopyrrolate is a quaternary ammonium compound with the following chemical name: 3-[(cyclopentyl hydroxyphenylacetyl)oxy]-1,1-dimethylpyrrolidinium bromide. The molecular formula for glycopyrrolate is $C_{19}H_{28}BrNO_3$, the molecular weight is 398.3 g/mol, and the structural formula is:



Each glycopyrrolate tablets, USP contains glycopyrrolate, USP 1 mg or 2 mg as the active ingredient. The inactive ingredients are dibasic calcium phosphate, lactose, magnesium stearate, povidone, and sodium starch glycolate.

12 CLINICAL PHARMACOLOGY

12.1 Mechanism of Action

Glycopyrrolate, an anticholinergic (antimuscarinic) agent, inhibits the action of acetylcholine on parietal cells in the stomach and decreases the volume and acidity of gastric secretions.

12.2 Pharmacodynamics

No formal pharmacodynamic studies have been conducted with glycopyrrolate.

12.3 Pharmacokinetics

Patients with Renal Impairment

In the published literature, glycopyrrolate 4 mcg/kg was administered intravenously (glycopyrrolate tablets are not recommended for intravenous use) in uremic patients undergoing renal transplantation surgery. The mean AUC (10.6 mcg·h/L) and 24-hour urinary excretion (7%) for glycopyrrolate were significantly different from normal healthy adult subjects undergoing general surgery (3.7 mcg·h/L, and 65%, respectively) [see *Use in Specific Populations* (8.6)].

13 NONCLINICAL TOXICOLOGY

13.1 Carcinogenesis, Mutagenesis, Impairment of Fertility

Reproduction studies in rats resulted in diminished rates of conception in a dose-related manner. Studies in dogs suggest that diminished rates of conception may be due to diminished seminal secretion, which is evident at high doses of glycopyrrolate.

16 HOW SUPPLIED/STORAGE AND HANDLING

Glycopyrrolate Tablets USP, 1 mg are white to off-white, round, flat beveled edge tablet debossed with "MCR 117" separated by break line on one side and plain on other side. Packaged in bottles of 100 tablets.

- Glycopyrrolate Tablets USP, 1 mg in bottles of 100 (NDC 23155-606-01).

Glycopyrrolate Tablets USP, 2 mg are white to off white, round, flat beveled edge tablet debossed with "AC 108" separated by break line on one side and plain on other side. Packaged in bottles of 100 tablets.

- Glycopyrrolate Tablets USP, 2 mg in bottles of 100 (NDC 23155-607-01).

Store at 20° to 25°C (68° to 77°F); excursions permitted between 15° C to 30°C (59° F to 86°F) [see USP Controlled Room Temperature]. Keep out of reach of children.

Dispense in tight container.

17 PATIENT COUNSELING INFORMATION

Precipitation of Acute Glaucoma

Advise patients to discontinue glycopyrrolate tablets and promptly seek medical care if they experience symptoms of acute angle-closure glaucoma (pain and reddening of the eyes accompanied by dilated pupils) [see *Warnings and Precautions* (5.1)].

Partial or Complete Mechanical Intestinal Obstruction

Advise patients to contact their healthcare provider if diarrhea occurs, especially in patients with ileostomy or colostomy [see *Warnings and Precautions* (5.2)].

Gastrointestinal Adverse Reactions Due to Decreased Gastrointestinal Motility

Inform patients that glycopyrrolate tablets may cause adverse reactions related to decreased gastrointestinal motility and report to their healthcare provider if they experience symptoms such as vomiting, early satiety, abdominal distention, and constipation [see *Warnings and Precautions* (5.3)].

Cognitive and Visual Adverse Reactions

Inform patients that glycopyrrolate tablets may cause cognitive or visual impairment and not operate motor vehicles or other dangerous machinery or perform other hazardous tasks until they are reasonably certain that glycopyrrolate tablets do not affect them adversely. Advise patients to discontinue glycopyrrolate tablets immediately and contact

their healthcare provider if symptoms develop (e.g., drowsiness or blurred vision) [see *Warnings and Precautions* (5.4)].

Heat Prostration at High Environmental Temperatures

Inform patients that glycopyrrolate tablets can reduce sweating, leading to the possibility of heat exhaustion or heat stroke. Advise patients to avoid exposure to hot or very warm environmental temperatures [see *Warnings and Precautions* (5.5)].

Distributed by:

Avet Pharmaceuticals Inc.
East Brunswick, NJ 08816
1.866.901.DRUG (3784)



200146

Revised: 10/2022

PACKAGE LABEL.PRINCIPAL DISPLAY PANEL

1.0" L

<p>NDC 23155-606-01</p> <p>Glycopyrrolate Tablets, USP</p> <p>1 mg</p> <hr/> <p>100 Tablets Rx only</p> <p> Avet Pharma®</p>	<p>Each tablet contains: Glycopyrrolate, USP 1 mg. USUAL DOSAGE: One or two tablets three times a day See accompanying information. STORAGE: Store at 20° to 25°C (68° to 77° F); excursions permitted between 15° to 30°C (59° to 86°F) [see USP Controlled Room Temperature]. PHARMACIST: Dispense in tight container.</p> <p>Distributed by: Avet Pharmaceuticals Inc. East Brunswick, NJ 08816 200144 Rev. 01/2022</p>	<p>No Varnish</p>
---	--	-------------------

1.0" L

<p>NDC 23155-607-01</p> <p>Glycopyrrolate Tablets, USP</p> <p>2 mg</p> <hr/> <p>100 Tablets Rx only</p> <p> Avet Pharma®</p>	<p>Each tablet contains: Glycopyrrolate, USP 2 mg. USUAL DOSAGE: One tablet two or three times a day See accompanying information. STORAGE: Store at 20° to 25°C (68° to 77° F); excursions permitted between 15° to 30°C (59° to 86°F) [see USP Controlled Room Temperature]. PHARMACIST: Dispense in tight container.</p> <p>Distributed by: Avet Pharmaceuticals Inc. East Brunswick, NJ 08816 200145 Rev. 10/2022</p>	<p>No Varnish</p>
---	---	-------------------

GLYCOPYRROLATE

glycopyrrolate tablet

Product Information

Product Type	HUMAN PRESCRIPTION DRUG	Item Code (Source)	NDC:23155-606
Route of Administration	ORAL		

Active Ingredient/Active Moiety

Ingredient Name	Basis of Strength	Strength
GLYCOPYRROLATE (UNII: V92S09WP2I) (GLYCOPYRRONIUM - UNII:A14FB57V1D)	GLYCOPYRROLATE	1 mg

Inactive Ingredients

Ingredient Name	Strength
CALCIUM PHOSPHATE, DIBASIC, DIHYDRATE (UNII: O7TSZ97GEP)	
LACTOSE (UNII: J2B2A4N98G)	
MAGNESIUM STEARATE (UNII: 70097M6I30)	
POVIDONE (UNII: FZ989GH94E)	
SODIUM STARCH GLYCOLATE TYPE A POTATO (UNII: 5856J3G2A2)	

Product Characteristics

Color	WHITE	Score	2 pieces
Shape	ROUND	Size	7mm
Flavor		Imprint Code	MCR;117
Contains			

Packaging

#	Item Code	Package Description	Marketing Start Date	Marketing End Date
1	NDC:23155-606-01	100 in 1 BOTTLE; Type 0: Not a Combination Product	02/27/2017	

Marketing Information

Marketing Category	Application Number or Monograph Citation	Marketing Start Date	Marketing End Date
ANDA	ANDA207201	02/27/2017	

GLYCOPYRROLATE

glycopyrrolate tablet

Product Information

Product Type	HUMAN PRESCRIPTION DRUG	Item Code (Source)	NDC:23155-607
Route of Administration	ORAL		

Active Ingredient/Active Moiety

Ingredient Name	Basis of Strength	Strength
GLYCOPYRROLATE (UNII: V92S09WP2I) (GLYCOPYRRONIUM - UNII:A14FB57V1D)	GLYCOPYRROLATE	2 mg

Inactive Ingredients

Ingredient Name	Strength
CALCIUM PHOSPHATE, DIBASIC, DIHYDRATE (UNII: O7TSZ97GEP)	
LACTOSE (UNII: J2B2A4N98G)	
MAGNESIUM STEARATE (UNII: 70097M6I30)	
POVIDONE (UNII: FZ989GH94E)	
SODIUM STARCH GLYCOLATE TYPE A POTATO (UNII: 5856J3G2A2)	

Product Characteristics

Color	WHITE	Score	2 pieces
Shape	ROUND	Size	7mm
Flavor		Imprint Code	AC;108
Contains			

Packaging

#	Item Code	Package Description	Marketing Start Date	Marketing End Date
1	NDC:23155-607-01	100 in 1 BOTTLE; Type 0: Not a Combination Product	02/27/2017	

Marketing Information

Marketing Category	Application Number or Monograph Citation	Marketing Start Date	Marketing End Date
ANDA	ANDA207201	02/27/2017	

Labeler - Heritage Pharmaceuticals Inc. d/b/a Avet Pharmaceuticals Inc. (780779901)

Registrant - Appco Pharma LLC (078510186)

Establishment

Name	Address	ID/FEI	Business Operations
Appco Pharma LLC		078510186	ANALYSIS(23155-606, 23155-607) , MANUFACTURE(23155-606, 23155-607) , PACK(23155-606, 23155-607)

Revised: 11/2022

Heritage Pharmaceuticals Inc. d/b/a Avet Pharmaceuticals Inc.