

CHELIDONIUM MAJUS- chelidonium majus pellet
Rxhomeo Private Limited d.b.a. Rxhomeo, Inc

Disclaimer: This homeopathic product has not been evaluated by the Food and Drug Administration for safety or efficacy. FDA is not aware of scientific evidence to support homeopathy as effective.

ACTIVE INGREDIENT

CHELIDONIUM MAJUS HPUS 1X and higher

USES

USES: Temporary Relief - Upset Stomach*

* Claims based on traditional homeopathic practice, not accepted medical evidence. Not FDA evaluated.

INDICATIONS

Condition listed above or as directed by the physician

DOSAGE

Adults- Take 4 or 6 Pellets by mouth, three times daily or as suggested by physician.
Children 2 years and older- take 1/2 the adult dose.

WARNINGS

This product is to be used for self-limiting conditions

If symptoms do not improve in 4 days, or worsen, discontinue use and seek assistance of health professional

As with any drug, if you are pregnant, or nursing a baby, seek professional advice before taking this product

Keep this and all medication out of reach of children

Do not use if capseal is broken or missing.

Close the cap tightly after use.

INACTIVE INGREDIENTS

Sucrose

STORAGE

Store in a cool dark place

QUESTIONS OR COMMENTS

www.Rxhomeo.com | 1.888.2796642 | info@rxhomeo.com

Rxhomeo, Inc 3200 Commander Dr, Ste 100-W1, Carrollton, TX 75006 USA



rxhomeo.com

CHELIDONIUM MAJUS 1X

Ingredients: Active: As Above, Inactive: Sucrose
USES: Temporary Relief - Upset Stomach*

* Claims based on traditional homeopathic practices, not accepted medical evidence. Not FDA evaluated.



XXX Pellets

Dosage: Adults- Take 4 or 6 pellets by mouth, three times daily or as directed by physician. Children 2 years and older -Take 1/2 the adult dose.



Distributed by Rxhomeo, Inc 3200 Commander Dr, Ste 100-W1, Carrollton, TX 75006 USA Manufactured by: Rxhomeo Private Limited "Indraathanush", 4-1-424 to 426, Bank Street, Abids, Hyderabad #1 India.

NDC 15631-0124 B.No XXXXXXXXXX MFD XX/XX EXP XX/XX

HOMEPATHIC MEDICINE

<<< MINI LABEL USED
WITH BLISTER PACK FOR
SELECT PACK SIZES



CHELIDONIUM MAJUS 1X

Ingredients: Active: As Above, Inactive: Sucrose
USES: Temporary Relief - Upset Stomach*

* Claims based on traditional homeopathic practices, not accepted medical evidence. Not FDA evaluated.



8 907460 005526



Dosage: Adults- Take 4 or 6 pellets by mouth, three times daily or as directed by physician. Children 2 years and older -Take 1/2 the adult dose. Warnings: This product is to be used for self-limiting conditions. If symptoms do not improve in 4 days, or worsen, discontinue use and seek assistance of a health professional * As with any drug, if you are pregnant or nursing a baby, seek professional advice before taking this product * Keep this and all medication out of reach of children * Store in a cool dark place * Do not use if capseal is broken or missing * Close cap tightly after use.



Distributed by Rxhomeo, Inc 3200 Commander Dr, Ste 100-W1, Carrollton, TX 75006 USA Manufactured by: Rxhomeo Private Limited "Indradhanush", 4-1-424 to 426, Bank Street, Abids, Hyderabad #500001 India.

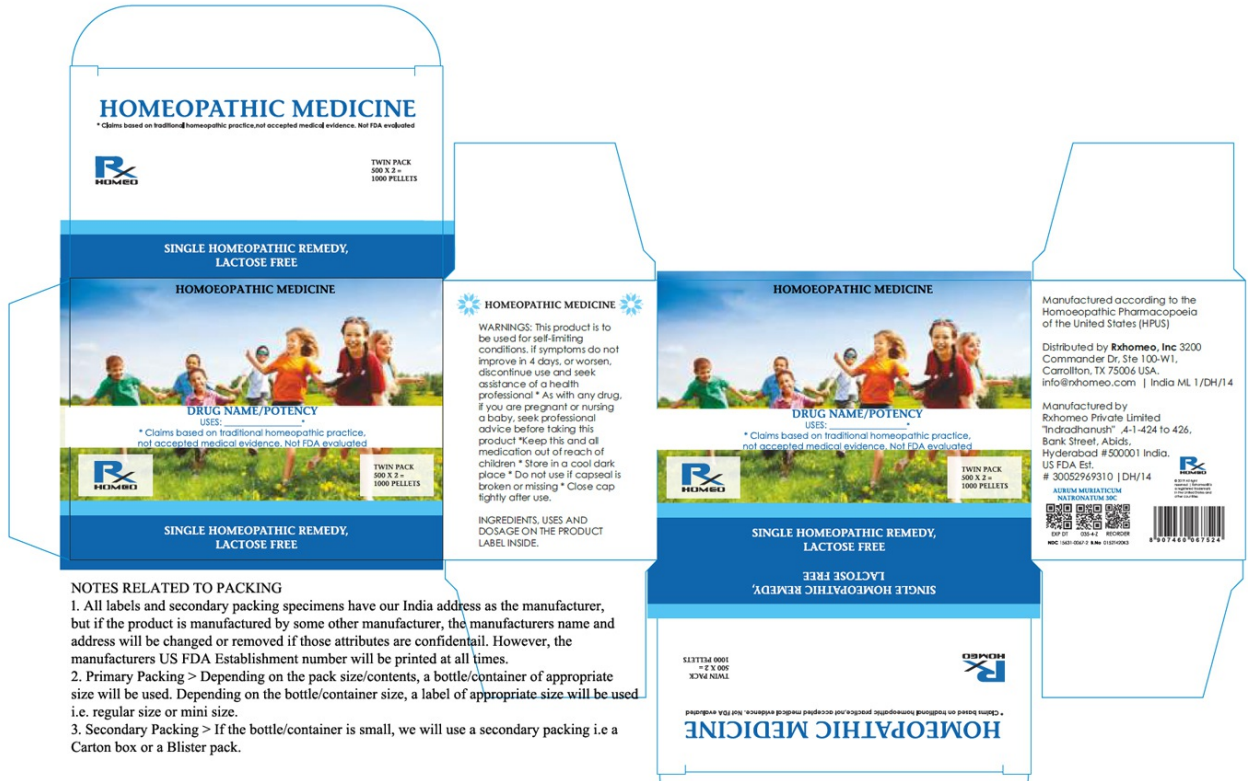
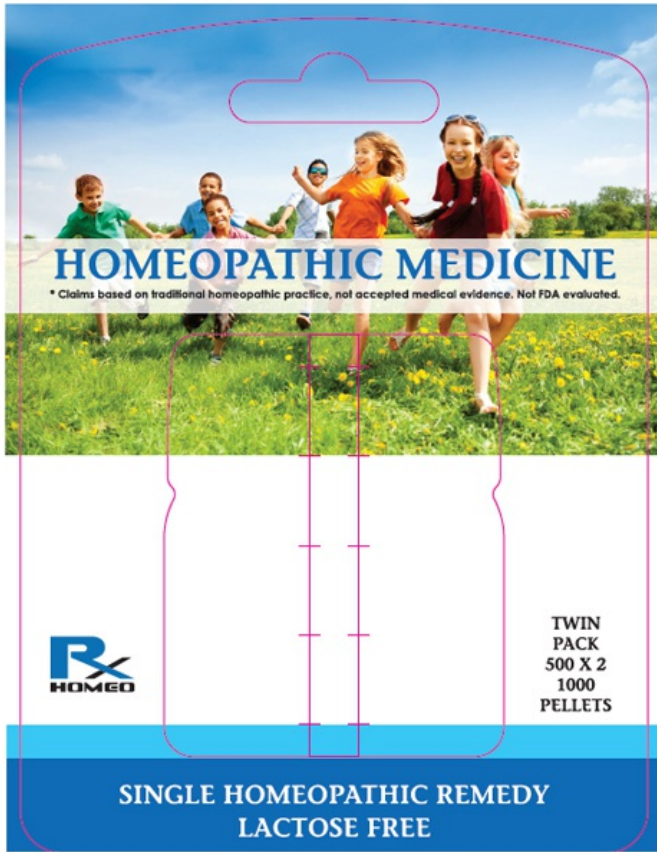
NDC 15631-0124 B.No XXXXXXXXXX MFD XX/XX EXP XX/XX Contents 100 Pellets



HOMEPATHIC MEDICINE



Manufactured according to the Homeopathic Pharmacopoeia of the United States
FDA Est. # 30052969310 | India ML 1/DH/14
info@rxhomeo.com | Rxhomeo.com
1-888-8RYONIA (279-6642)



NOTES RELATED TO PACKING

1. All labels and secondary packing specimens have our India address as the manufacturer, but if the product is manufactured by some other manufacturer, the manufacturers name and address will be changed or removed if those attributes are confidential. However, the manufacturers US FDA Establishment number will be printed at all times.
2. Primary Packing > Depending on the pack size/contents, a bottle/container of appropriate size will be used. Depending on the bottle/container size, a label of appropriate size will be used i.e. regular size or mini size.
3. Secondary Packing > If the bottle/container is small, we will use a secondary packing i.e a Carton box or a Blister pack.

CHELIDONIUM MAJUS

chelidonium majus pellet

Product Information

| | | | | |
|--|---|---|-----------------------------|---------------------------|
| Product Type | HUMAN OTC DRUG | Item Code (Source) | NDC:15631-0124 | |
| Route of Administration | ORAL | | | |
| Active Ingredient/Active Moiety | | | | |
| Ingredient Name | | Basis of Strength | Strength | |
| CHELIDONIUM MAJUS (UNII: 7E889U5RNN) (CHELIDONIUM MAJUS - UNII:7E889U5RNN) | | CHELIDONIUM MAJUS | 1 [hp_X] | |
| Inactive Ingredients | | | | |
| Ingredient Name | | Strength | | |
| SUCROSE (UNII: C151H8M554) | | | | |
| Packaging | | | | |
| # | Item Code | Package Description | Marketing Start Date | Marketing End Date |
| 1 | NDC:15631-0124-0 | 100 in 1 PACKAGE; Type 0: Not a Combination Product | 01/01/2018 | |
| 2 | NDC:15631-0124-1 | 200 in 1 PACKAGE; Type 0: Not a Combination Product | 01/01/2018 | |
| 3 | NDC:15631-0124-2 | 400 in 1 PACKAGE; Type 0: Not a Combination Product | 01/01/2018 | |
| 4 | NDC:15631-0124-3 | 750 in 1 PACKAGE; Type 0: Not a Combination Product | 01/01/2018 | |
| 5 | NDC:15631-0124-4 | 2500 in 1 PACKAGE; Type 0: Not a Combination Product | 01/01/2018 | |
| 6 | NDC:15631-0124-5 | 12500 in 1 PACKAGE; Type 0: Not a Combination Product | 01/01/2018 | |
| 7 | NDC:15631-0124-6 | 500 in 1 PACKAGE; Type 0: Not a Combination Product | 08/23/2021 | |
| 8 | NDC:15631-0124-7 | 1000 in 1 PACKAGE; Type 0: Not a Combination Product | 08/23/2021 | |
| Marketing Information | | | | |
| Marketing Category | Application Number or Monograph Citation | Marketing Start Date | Marketing End Date | |
| unapproved homeopathic | | 10/02/2015 | | |

Labeler - Rxhomeo Private Limited d.b.a. Rxhomeo, Inc (650833994)

Establishment

| Name | Address | ID/FEI | Business Operations |
|---|---------|-----------|---|
| Rxhomeo Private Limited d.b.a. Rxhomeo, Inc | | 650833994 | manufacture(15631-0124) , label(15631-0124) |

Revised: 10/2021

Rxhomeo Private Limited d.b.a. Rxhomeo, Inc