

# MEMANTINE HYDROCHLORIDE- memantine hydrochloride capsule, extended release

## Bryant Ranch Prepack

### HIGHLIGHTS OF PRESCRIBING INFORMATION

These highlights do not include all the information needed to use MEMANTINE HYDROCHLORIDE EXTENDED-RELEASE CAPSULES safely and effectively. See full prescribing information for MEMANTINE HYDROCHLORIDE EXTENDED-RELEASE CAPSULES.

### MEMANTINE hydrochloride extended-release capsules, for oral use

Initial U.S. Approval: 2003

#### INDICATIONS AND USAGE

Memantine hydrochloride extended-release capsules are a N-methyl-D-aspartate (NMDA) receptor antagonist indicated for the treatment of moderate to severe dementia of the Alzheimer's type. (1)

#### DOSAGE AND ADMINISTRATION

- The recommended starting dose of memantine hydrochloride extended-release capsules is 7 mg once daily; the dose should be increased in 7 mg increments to the recommended maintenance dose of 28 mg once daily; the minimum recommended interval between dose increases is one week. (2.1)
- Patients with severe renal impairment: the recommended maintenance dose of memantine hydrochloride extended-release capsules is 14 mg once daily. (2.3)

#### DOSAGE FORMS AND STRENGTHS

Memantine hydrochloride extended-release capsules are available as an extended-release capsule in the following strengths: 7 mg, 14 mg, 21 mg, 28 mg (3)

#### CONTRAINDICATIONS

- Memantine hydrochloride extended-release capsules are contraindicated in patients with known hypersensitivity to memantine hydrochloride or to any excipients used in the formulation. (4)

#### WARNINGS AND PRECAUTIONS

- Conditions that raise urine pH may decrease the urinary elimination of memantine resulting in increased plasma levels of memantine. (5.1, 7.1)

#### ADVERSE REACTIONS

The most commonly observed adverse reactions occurring at a frequency of at least 5% and greater than placebo with administration of memantine hydrochloride extended-release capsules 28 mg/day were headache, diarrhea and dizziness. (6.1)

**To report SUSPECTED ADVERSE REACTIONS, contact ANI Pharmaceuticals, Inc. at 1-800-308-6755 or FDA at 1-800-FDA-1088 or [www.fda.gov/medwatch](http://www.fda.gov/medwatch).**

**See 17 for PATIENT COUNSELING INFORMATION.**

**Revised: 3/2022**

---

## FULL PRESCRIBING INFORMATION: CONTENTS\*

### 1 INDICATIONS AND USAGE

### 2 DOSAGE AND ADMINISTRATION

#### 2.1 Recommended Dosing

#### 2.2 Switching from Memantine Hydrochloride Tablets to Memantine Hydrochloride Extended-Release Capsules

#### 2.3 Dosing in Patients with Renal Impairment

### **3 DOSAGE FORMS AND STRENGTHS**

### **4 CONTRAINDICATIONS**

### **5 WARNINGS AND PRECAUTIONS**

5.1 Genitourinary Conditions

### **6 ADVERSE REACTIONS**

6.1 Clinical Trial Experience

6.2 Postmarketing Experience

### **7 DRUG INTERACTIONS**

7.1 Drugs That Make Urine Alkaline

7.2 Use with Other N-methyl-D-aspartate (NMDA) Antagonists

### **8 USE IN SPECIFIC POPULATIONS**

8.1 Pregnancy

8.2 Lactation

8.4 Pediatric Use

8.5 Geriatric Use

8.6 Renal Impairment

8.7 Hepatic Impairment

### **10 OVERDOSAGE**

### **11 DESCRIPTION**

### **12 CLINICAL PHARMACOLOGY**

12.1 Mechanism of Action

12.2 Pharmacodynamics

12.3 Pharmacokinetics

### **13 NONCLINICAL TOXICOLOGY**

13.1 Carcinogenesis, Mutagenesis, Impairment of Fertility

13.2 Animal Toxicology and/or Pharmacology

### **14 CLINICAL STUDIES**

### **16 HOW SUPPLIED/STORAGE AND HANDLING**

### **17 PATIENT COUNSELING INFORMATION**

PATIENT INFORMATION

\* Sections or subsections omitted from the full prescribing information are not listed.

---

## **FULL PRESCRIBING INFORMATION**

### **1 INDICATIONS AND USAGE**

Memantine hydrochloride extended-release capsules are indicated for the treatment of moderate to severe dementia of the Alzheimer's type.

### **2 DOSAGE AND ADMINISTRATION**

#### **2.1 Recommended Dosing**

The dosage of memantine hydrochloride extended-release capsules shown to be effective in a controlled clinical trial is 28 mg once daily.

The recommended starting dose of memantine hydrochloride extended-release capsules is 7 mg once daily. The dose should be increased in 7 mg increments to the recommended maintenance dose of 28 mg once daily. The minimum recommended interval between dose increases is one week. The dose should only be increased if the previous dose has been well tolerated. The maximum recommended dose is 28 mg once daily.

Memantine hydrochloride extended-release capsules can be taken with or without food. Memantine hydrochloride extended-release capsules can be taken intact or may be opened, sprinkled on applesauce, and thereby swallowed. The entire contents of each memantine hydrochloride extended-release capsule should be consumed; the dose should not be divided.

Except when opened and sprinkled on applesauce, as described above, memantine hydrochloride extended-release capsules should be swallowed whole. Memantine hydrochloride extended-release capsules should not be divided, chewed, or crushed.

If a patient misses a single dose of memantine hydrochloride extended-release capsules, that patient should not double up on the next dose. The next dose should be taken as scheduled. If a patient fails to take memantine hydrochloride extended-release capsules for several days, dosing may need to be resumed at lower doses and retitrated as described above.

## **2.2 Switching from Memantine Hydrochloride Tablets to Memantine Hydrochloride Extended-Release Capsules**

Patients treated with memantine hydrochloride tablets may be switched to memantine hydrochloride extended-release capsules as follows:

It is recommended that a patient who is on a regimen of 10 mg twice daily of memantine hydrochloride tablets be switched to memantine hydrochloride extended-release capsules 28 mg once daily capsules the day following the last dose of 10 mg memantine hydrochloride tablets. There is no study addressing the comparative efficacy of these 2 regimens.

In a patient with severe renal impairment, it is recommended that a patient who is on a regimen of 5 mg twice daily of memantine hydrochloride tablets be switched to memantine hydrochloride extended-release capsules 14 mg once daily capsules the day following the last dose of 5 mg memantine hydrochloride tablets.

## **2.3 Dosing in Patients with Renal Impairment**

In patients with severe renal impairment (creatinine clearance of 5 – 29 mL/min, based on the Cockcroft-Gault equation), the recommended maintenance dose (and maximum recommended dose) is 14 mg/day [see *Clinical Pharmacology (12.3)*].

## **3 DOSAGE FORMS AND STRENGTHS**

Each capsule contains 7 mg, 14 mg, 21 mg, or 28 mg of memantine hydrochloride.

- Memantine hydrochloride extended-release capsules 7 mg, are flesh opaque cap and body, hard gelatin capsules, printed “7MG” on the cap and “A242” on the body.

- Memantine hydrochloride extended-release capsules 14 mg, are flesh opaque cap and white opaque body, hard gelatin capsules, printed “14MG” on the cap and “A264” on the body.
- Memantine hydrochloride extended-release capsules 21 mg, are pink opaque cap and body, hard gelatin capsules, printed “21MG” on the cap and “A243” on the body.
- Memantine hydrochloride extended-release capsules 28 mg, are pink opaque cap and white opaque body, hard gelatin capsules, printed “28MG” on cap and “A266” on the body.

## **4 CONTRAINDICATIONS**

Memantine hydrochloride extended-release capsules are contraindicated in patients with known hypersensitivity to memantine hydrochloride or to any excipients used in the formulation.

## **5 WARNINGS AND PRECAUTIONS**

### **5.1 Genitourinary Conditions**

Conditions that raise urine pH may decrease the urinary elimination of memantine resulting in increased plasma levels of memantine. [see *Drug Interactions (7.1)*].

## **6 ADVERSE REACTIONS**

### **6.1 Clinical Trial Experience**

Memantine hydrochloride extended-release capsules were evaluated in a double-blind placebo-controlled trial in which a total of 676 patients with moderate to severe dementia of the Alzheimer’s type (341 patients on memantine hydrochloride extended-release capsules 28 mg/day and 335 patients on placebo) for a treatment period up to 24 weeks.

Because clinical trials are conducted under widely varying conditions, adverse reaction rates observed in the clinical trials of a drug cannot be directly compared to rates in the clinical trials of another drug and may not reflect the rates observed in practice.

#### Adverse Reactions Leading to Discontinuation

In the placebo-controlled clinical trial of memantine hydrochloride extended-release capsules, the proportion of patients in the memantine hydrochloride extended-release capsule group and the placebo group who discontinued treatment due to adverse reactions was 10% and 6%, respectively. The most common adverse reaction that led to treatment discontinuation in the memantine hydrochloride extended-release capsule group was dizziness at a rate of 1.5%.

#### Most Common Adverse Reactions

The most commonly observed adverse reactions seen in patients administered memantine hydrochloride extended-release capsules in the controlled clinical trial, defined as those occurring at a frequency of at least 5% in the memantine hydrochloride

extended-release capsule group and at a higher frequency than placebo were headache, diarrhea and dizziness.

Table 1 lists adverse reactions that were observed at an incidence of  $\geq 2\%$  in the memantine hydrochloride extended-release capsule group and occurred at a rate greater than placebo.

**Table 1: Adverse Reactions Observed with a Frequency of  $\geq 2\%$  in the Memantine Hydrochloride Extended-Release Capsule Group and at a Rate Greater than Placebo**

<b>Adverse Reaction</b>	<b>Placebo (n = 335) %</b>	<b>Memantine Hydrochloride Extended-Release Capsules 28 mg (n = 341) %</b>
<b>Gastrointestinal Disorders</b>		
Diarrhea	4	5
Constipation	1	3
Abdominal pain	1	2
Vomiting	1	2
<b>Infections and Infestations</b>		
Influenza	3	4
<b>Investigations</b>		
Weight, increased	1	3
<b>Musculoskeletal and Connective Tissue Disorders</b>		
Back pain	1	3
<b>Nervous System Disorders</b>		
Headache	5	6
Dizziness	1	5
Somnolence	1	3
<b>Psychiatric Disorders</b>		
Anxiety	3	4
Depression	1	3
Aggression	1	2
<b>Renal and Urinary Disorders</b>		
Urinary incontinence	1	2
<b>Vascular Disorders</b>		
Hypertension	2	4
Hypotension	1	2

### Seizure

Memantine has not been systematically evaluated in patients with a seizure disorder. In clinical trials of memantine, seizures occurred in 0.3% of patients treated with memantine and 0.6% of patients treated with placebo.

## **6.2 Postmarketing Experience**

The following adverse reactions have been identified during post-approval use of memantine.

Because these reactions are reported voluntarily from a population of uncertain size, it is not always possible to reliably estimate their frequency or establish a causal relationship to drug exposure. These reactions include:

Blood and Lymphatic System Disorders: agranulocytosis, leukopenia (including neutropenia), pancytopenia, thrombocytopenia, thrombotic thrombocytopenic purpura.

Cardiac Disorders: cardiac failure congestive.

Gastrointestinal Disorders: pancreatitis.

Hepatobiliary Disorders: hepatitis.

Psychiatric Disorders: suicidal ideation.

Renal and Urinary Disorders: acute renal failure (including increased creatinine and renal insufficiency).

Skin Disorders: Stevens Johnson syndrome.

## **7 DRUG INTERACTIONS**

### **7.1 Drugs That Make Urine Alkaline**

The clearance of memantine was reduced by about 80% under alkaline urine conditions at pH 8. Therefore, alterations of urine pH towards the alkaline condition may lead to an accumulation of the drug with a possible increase in adverse effects. Urine pH is altered by diet, drugs (e.g. carbonic anhydrase inhibitors, sodium bicarbonate) and clinical state of the patient (e.g. renal tubular acidosis or severe infections of the urinary tract). Hence, memantine should be used with caution under these conditions.

### **7.2 Use with Other N-methyl-D-aspartate (NMDA) Antagonists**

The combined use of memantine hydrochloride extended-release capsules with other NMDA antagonists (amantadine, ketamine, and dextromethorphan) has not been systematically evaluated and such use should be approached with caution.

## **8 USE IN SPECIFIC POPULATIONS**

### **8.1 Pregnancy**

#### Risk Summary

There are no adequate data on the developmental risk associated with the use of memantine hydrochloride extended-release capsules in pregnant women.

Adverse developmental effects (decreased body weight and skeletal ossification) were observed in the offspring of rats administered memantine during pregnancy at doses associated with minimal maternal toxicity. These doses are higher than those used in humans at the maximum recommended daily dose of memantine hydrochloride

extended-release capsules [see Data].

In the U.S. general population, the estimated background risk of major birth defects and miscarriage in clinically recognized pregnancies is 2-4% and 15-20%, respectively. The background risk of major birth defects and miscarriage for the indicated population is unknown.

## Data

### *Animal Data*

Oral administration of memantine (0, 2, 6, or 18 mg/kg/day) to rats during the period of organogenesis resulted in decreased skeletal ossification in fetuses at the highest dose tested. The higher no-effect dose for adverse developmental effects (6 mg/kg) is 2 times the maximum recommended human daily dose (MRHD) of memantine hydrochloride extended-release capsules (28 mg) on a body surface area (mg/m<sup>2</sup>) basis.

Oral administration of memantine to rabbits (0, 3, 10, or 30 mg/kg/day) during the period of organogenesis resulted in no adverse developmental effects. The highest dose tested is approximately 20 times the MRHD of memantine hydrochloride extended-release capsules on a mg/m<sup>2</sup> basis.

In rats, memantine (0, 2, 6, or 18 mg/kg/day) was administered orally prior to and throughout mating and, in females, through the period of organogenesis or continuing throughout lactation to weaning. Decreased skeletal ossification in fetuses and decreased body weight in pups were observed at the highest dose tested. The higher no-effect dose for adverse developmental effects (6 mg/kg/day) is 2 times the MRHD of memantine hydrochloride extended-release capsules on a mg/m<sup>2</sup> basis.

Oral administration of memantine (0, 2, 6, or 18 mg/kg/day) to rats from late gestation throughout lactation to weaning, resulted in decreased pup weights at the highest dose tested. The higher no-effect dose (6 mg/kg/day) is approximately 2 times the MRHD of memantine hydrochloride extended-release capsules on a mg/m<sup>2</sup> basis.

## **8.2 Lactation**

### Risk Summary

There are no data on the presence of memantine in human milk, the effects on the breastfed infant, or the effects of memantine hydrochloride extended-release capsules on milk production.

The developmental and health benefits of breastfeeding should be considered along with the mother's clinical need for memantine hydrochloride extended-release capsules and any potential adverse effects on the breastfed infant from memantine hydrochloride extended-release capsules or from the underlying maternal condition.

## **8.4 Pediatric Use**

Safety and effectiveness in pediatric patients have not been established.

Memantine failed to demonstrate efficacy in two 12-week controlled clinical studies of 578 pediatric patients aged 6-12 years with autism spectrum disorders (ASD), including autism, Asperger's disorder and Pervasive Development Disorder -Not Otherwise Specified (PDD-NOS). Memantine has not been studied in pediatric patients under 6 years of age or over 12 years of age. Memantine treatment was initiated at 3 mg/day

and the dose was escalated to the target dose (weight-based) by week 6. Oral doses of memantine 3, 6, 9, or 15 mg extended-release capsules were administered once daily to patients with weights < 20 kg, 20-39 kg, 40-59 kg and ≥ 60 kg, respectively.

In a randomized, 12-week double-blind, placebo-controlled parallel study (Study A) in patients with autism, there was no statistically significant difference in the Social Responsiveness Scale (SRS) total raw score between patients randomized to memantine (n=54) and those randomized to placebo (n=53). In a 12-week responder-enriched randomized withdrawal study (Study B) in 471 patients with ASD, there was no statistically significant difference in the loss of therapeutic response rates between patients randomized to remain on full-dose memantine (n=153) and those randomized to switch to placebo (n=158).

The overall safety profile of memantine in pediatric patients was generally consistent with the known safety profile in adults [see *Adverse Reactions (6.1)*].

In Study A, the adverse reactions in the memantine group (n=56) that were reported in at least 5% of patients and at least twice the frequency of the placebo group (N=58) are listed in Table 2.

**Table 2: Study A Commonly Reported Adverse Reactions with a Frequency ≥ 5% and Twice That of Placebo**

<b>Adverse Reaction</b>	<b>Memantine N=56</b>	<b>Placebo N=58</b>
Cough	8.9%	3.4%
Influenza	7.1%	3.4%
Rhinorrhea	5.4%	0%
Agitation	5.4%	1.7%
<b>Discontinuations due to Adverse Reactions<sup>a</sup></b>		
Aggression	3.6%	1.7%
Irritability	1.8%	3.4%

<sup>a</sup> Reported adverse reactions leading to discontinuation in more than one patient in either treatment group.

The adverse reactions that were reported in at least 5% of patients in the 12-48 week open-label study to identify responders to enroll in Study B are listed in Table 3.

**Table 3: 12-48 Week Open Label Lead-In study to Study B Commonly Reported Adverse Reactions with a Frequency ≥ 5%**

<b>Adverse Reaction</b>	<b>Memantine N=903</b>
Headache	8.0%
Nasopharyngitis	6.3%
Pyrexia	5.8%
Irritability	5.4%
<b>Discontinuations due to Adverse Reactions<sup>a</sup></b>	
Irritability	1.2%
Aggression	1.0%

<sup>a</sup> At least 1% incidence of adverse reactions leading to premature discontinuation.



In the randomized withdrawal study (Study B), the adverse reaction in patients randomized to placebo (n=160) and reported in at least 5% of patients and twice that of the full-dose memantine treatment group (n=157) was irritability (5.0% vs 2.5%).

### Juvenile Animal Study

In a juvenile animal study, male and female juvenile rats were administered memantine (15, 30, and 45 mg/kg/day) starting on postnatal day (PND) 14 through PND 70. Body weights were reduced at 45 mg/kg/day. Delays in sexual maturation were noted in male and female rats at doses  $\geq$  30 mg/kg/day. Memantine induced neuronal lesions in several areas of the brain on PND 15 and 17 at doses  $\geq$  30 mg/kg/day. Behavioral toxicity (decrease percent of auditory startle habituation) was noted for animals in the 45 mg/kg/day dose group. The 15 mg/kg/day dose was considered the No-Observed-Adverse-Effect-Level (NOAEL) for this study.

In a second juvenile rat toxicity study, male and female juvenile rats were administered memantine (1, 3, 8, 15, 30, and 45 mg/kg/day) starting on postnatal day (PND) 7 through PND 70. Due to early memantine-related mortality, the 30 and 45 mg/kg/day dose groups were terminated without further evaluation. Memantine induced apoptosis or neuronal degeneration in several areas of the brain on PND 8, 10, and 17 at a dose of 15 mg/kg/day. The NOAEL for apoptosis and neuronal degeneration was 8 mg/kg/day. Behavioral toxicity (effects on motor activity, auditory startle habituation, and learning and memory) was noted at doses  $\geq$  3 mg/kg/day during treatment, but was not seen after drug discontinuation. Therefore, the 1 mg/kg/day dose was considered the NOAEL for the neurobehavioral effect in this study.

## **8.5 Geriatric Use**

The majority of people with Alzheimer's disease are 65 years of age and older. In the clinical study of memantine hydrochloride extended-release, the mean age of patients was approximately 77 years; over 91% of patients were 65 years and older, 67% were 75 years and older, and 14% were at or above 85 years of age. The efficacy and safety data presented in the clinical trial sections were obtained from these patients. There were no clinically meaningful differences in most adverse reactions reported by patient groups  $\geq$  65 years old and  $<$  65 years old.

## **8.6 Renal Impairment**

No dosage adjustment is needed in patients with mild or moderate renal impairment. A dosage reduction is recommended in patients with severe renal impairment [*see Dosage and Administration (2.3) and Clinical Pharmacology (12.3)*].

## **8.7 Hepatic Impairment**

No dosage adjustment is needed in patients with mild or moderate hepatic impairment. Memantine hydrochloride extended-release capsules were not studied in patients with severe hepatic impairment [*see Clinical Pharmacology (12.3)*].

## **10 OVERDOSAGE**

Signs and symptoms most often accompanying overdose with other formulations of

memantine in clinical trials and from worldwide marketing experience, alone or in combination with other drugs and/or alcohol, include agitation, asthenia, bradycardia, confusion, coma, dizziness, ECG changes, increased blood pressure, lethargy, loss of consciousness, psychosis, restlessness, slowed movement, somnolence, stupor, unsteady gait, visual hallucinations, vertigo, vomiting, and weakness. The largest known ingestion of memantine worldwide was 2 grams in a patient who took memantine in conjunction with unspecified antidiabetic medications. This patient experienced coma, diplopia, and agitation, but subsequently recovered.

One patient participating in a memantine hydrochloride extended-release capsule clinical trial unintentionally took 112 mg of memantine hydrochloride extended-release capsules daily for 31 days and experienced an elevated serum uric acid, elevated serum alkaline phosphatase, and low platelet count.

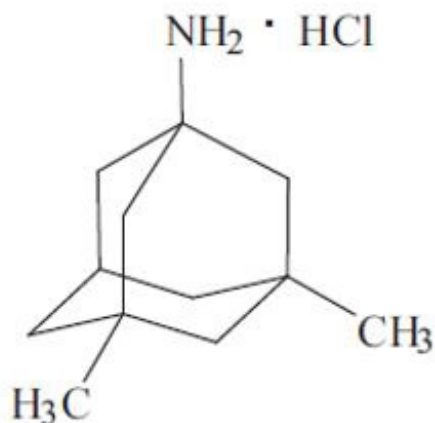
Fatal outcome has been very rarely reported with memantine, and the relationship to memantine was unclear.

Because strategies for the management of overdose are continually evolving, it is advisable to contact a poison control center to determine the latest recommendations for the management of an overdose of any drug. As in any cases of overdose, general supportive measures should be utilized, and treatment should be symptomatic.

Elimination of memantine can be enhanced by acidification of urine.

## 11 DESCRIPTION

Memantine hydrochloride USP is an orally active NMDA receptor antagonist. The chemical name for memantine hydrochloride USP is 1-amino-3,5-dimethyladamantane hydrochloride with the following structural formula:



The molecular formula is C<sub>12</sub>H<sub>21</sub>N·HCl and the molecular weight is 215.76. Memantine hydrochloride USP occurs as a fine white to off-white powder and is soluble in water.

Memantine hydrochloride extended-release capsules are supplied for oral administration as 7 mg, 14 mg, 21 mg, and 28 mg capsules. Each capsule contains extended-release beads with the labeled amount of memantine hydrochloride USP and the following inactive ingredients: colloidal silicon dioxide, ethylcellulose, hydroxypropyl cellulose,

hypromellose, medium chain triglycerides, oleic acid, polyethylene glycol, sugar spheres and talc, in hard gelatin capsules (containing gelatin, titanium dioxide and red iron oxide) imprinted with black ink containing black iron oxide, potassium hydroxide (14 mg and 28 mg), propylene glycol, and shellac.

## **12 CLINICAL PHARMACOLOGY**

### **12.1 Mechanism of Action**

Persistent activation of central nervous system N-methyl-D-aspartate (NMDA) receptors by the excitatory amino acid glutamate has been hypothesized to contribute to the symptomatology of Alzheimer's disease. Memantine is postulated to exert its therapeutic effect through its action as a low to moderate affinity uncompetitive (open-channel) NMDA receptor antagonist which binds preferentially to the NMDA receptor-operated cation channels. There is no evidence that memantine prevents or slows neurodegeneration in patients with Alzheimer's disease.

### **12.2 Pharmacodynamics**

Memantine showed low to negligible affinity for GABA, benzodiazepine, dopamine, adrenergic, histamine and glycine receptors and for voltage-dependent  $\text{Ca}^{2+}$ ,  $\text{Na}^{+}$ , or  $\text{K}^{+}$  channels. Memantine also showed antagonistic effects at the  $5\text{HT}_3$  receptor with a potency similar to that for the NMDA receptor and blocked nicotinic acetylcholine receptors with one-sixth to one-tenth the potency.

*In vitro* studies have shown that memantine does not affect the reversible inhibition of acetylcholinesterase by donepezil, galantamine, or tacrine.

### **12.3 Pharmacokinetics**

Memantine is well absorbed after oral administration and has linear pharmacokinetics over the therapeutic dose range. It is excreted predominantly unchanged in urine and has a terminal elimination half life of about 60-80 hours. In a study comparing 28 mg once daily memantine hydrochloride extended-release capsules to 10 mg twice daily memantine hydrochloride tablets, the  $C_{\text{max}}$  and  $\text{AUC}_{0-24}$  values were 48% and 33% higher for the XR dosage regimen, respectively.

#### Absorption

After multiple dose administration of memantine hydrochloride extended-release capsules, memantine peak concentrations occur around 9-12 hours postdose. There is no difference in the absorption of memantine hydrochloride when the capsule is taken intact or when the contents are sprinkled on applesauce.

There is no difference in memantine exposure, based on  $C_{\text{max}}$  or AUC, for memantine hydrochloride extended-release capsules whether that drug product is administered with food or on an empty stomach. However, peak plasma concentrations are achieved about 18 hours after administration with food versus approximately 25 hours after administration on an empty stomach.

#### Distribution

The mean volume of distribution of memantine is 9-11 L/kg and the plasma protein

binding is low (45%).

## Elimination

### *Metabolism*

Memantine undergoes partial hepatic metabolism. The hepatic microsomal CYP450 enzyme system does not play a significant role in the metabolism of memantine.

### *Excretion*

Memantine is excreted predominantly unchanged in the urine and has a terminal elimination half-life of about 60-80 hours. About 48% of administered drug is excreted unchanged in urine; the remainder is converted primarily to three polar metabolites which possess minimal NMDA receptor antagonistic activity: the N-glucuronide conjugate, 6-hydroxy-memantine, and 1-nitroso-deaminated memantine. A total of 74% of the administered dose is excreted as the sum of the parent drug and the N-glucuronide conjugate. Renal clearance involves active tubular secretion moderated by pH dependent tubular reabsorption.

## Specific Populations

### *Elderly*

The pharmacokinetics of memantine in young and elderly subjects are similar.

### *Gender*

Following multiple dose administration of memantine hydrochloride 20 mg daily, females had about 45% higher exposure than males, but there was no difference in exposure when body weight was taken into account.

### *Renal Impairment*

Memantine pharmacokinetics were evaluated following single oral administration of 20 mg memantine hydrochloride in 8 subjects with mild renal impairment (creatinine clearance, CL<sub>Cr</sub>, > 50 – 80 mL/min), 8 subjects with moderate renal impairment (CL<sub>Cr</sub> 30 – 49 mL/min), 7 subjects with severe renal impairment (CL<sub>Cr</sub> 5 – 29 mL/min) and 8 healthy subjects (CL<sub>Cr</sub> > 80 mL/min) matched as closely as possible by age, weight and gender to the subjects with renal impairment. Mean AUC<sub>0-∞</sub> increased by 4%, 60%, and 115% in subjects with mild, moderate, and severe renal impairment, respectively, compared to healthy subjects. The terminal elimination half-life increased by 18%, 41%, and 95% in subjects with mild, moderate, and severe renal impairment, respectively, compared to healthy subjects.

### *Hepatic Impairment*

Memantine pharmacokinetics were evaluated following the administration of single oral doses of 20 mg in 8 subjects with moderate hepatic impairment (Child-Pugh Class B, score 7-9) and 8 subjects who were age-, gender-, and weight-matched to the hepatically-impaired subjects. There was no change in memantine exposure (based on C<sub>max</sub> and AUC) in subjects with moderate hepatic impairment as compared with healthy subjects. However, terminal elimination half-life increased by about 16% in subjects with moderate hepatic impairment as compared with healthy subjects.

## Drug-Drug Interactions

### *Use with Cholinesterase Inhibitors*

Coadministration of memantine with the AChE inhibitor donepezil did not affect the pharmacokinetics of either compound. Furthermore, memantine did not affect AChE inhibition by donepezil. In a 24-week controlled clinical study in patients with moderate to severe Alzheimer's disease, the adverse reaction profile observed with a combination of memantine immediate-release and donepezil was similar to that of donepezil alone.

#### *Effect of Memantine on the Metabolism of Other Drugs*

*In vitro* studies conducted with marker substrates of CYP450 enzymes (CYP1A2, -2A6, 2C9, -2D6, -2E1, -3A4) showed minimal inhibition of these enzymes by memantine. In addition, *in vitro* studies indicate that at concentrations exceeding those associated with efficacy, memantine does not induce the cytochrome P450 isozymes CYP1A2, -2C9, 2E1 and -3A4/5. No pharmacokinetic interactions with drugs metabolized by these enzymes are expected.

Pharmacokinetic studies evaluated the potential of memantine for interaction with warfarin and bupropion. Memantine did not affect the pharmacokinetics of the CYP2B6 substrate bupropion or its metabolite hydroxybupropion. Furthermore, memantine did not affect the pharmacokinetics or pharmacodynamics of warfarin as assessed by the prothrombin INR.

#### *Effect of Other Drugs on Memantine*

Memantine is predominantly renally eliminated, and drugs that are substrates and/or inhibitors of the CYP450 system are not expected to alter the metabolism of memantine.

#### *Drugs Eliminated via Renal Mechanisms*

Because memantine is eliminated in part by tubular secretion, coadministration of drugs that use the same renal cationic system, including hydrochlorothiazide (HCTZ), triamterene (TA), metformin, cimetidine, ranitidine, quinidine, and nicotine, could potentially result in altered plasma levels of both agents. However, coadministration of memantine and HCTZ/TA did not affect the bioavailability of either memantine or TA, and the bioavailability of HCTZ decreased by 20%. In addition, coadministration of memantine with the antihyperglycemic drug Glucovance<sup>®</sup> (glyburide and metformin hydrochloride) did not affect the pharmacokinetics of memantine, metformin and glyburide. Furthermore, memantine did not modify the serum glucose lowering effect of Glucovance, indicating the absence of a pharmacodynamic interaction.

#### *Drugs Highly Bound to Plasma Proteins*

Because the plasma protein binding of memantine is low (45%), an interaction with drugs that are highly bound to plasma proteins, such as warfarin and digoxin, is unlikely.

## **13 NONCLINICAL TOXICOLOGY**

### **13.1 Carcinogenesis, Mutagenesis, Impairment of Fertility**

#### Carcinogenesis

There was no evidence of carcinogenicity in a 113-week oral study in mice at doses up to 40 mg/kg/day (7 times the maximum recommended human dose [MRHD] on a mg/m<sup>2</sup> basis). There was also no evidence of carcinogenicity in rats orally dosed at up to 40 mg/kg/day for 71 weeks followed by 20 mg/kg/day (14 and 7 times the MRHD on a

mg/m<sup>2</sup> basis, respectively) through 128 weeks.

### Mutagenesis

Memantine produced no evidence of genotoxic potential when evaluated in the *in vitro* *S. typhimurium* or *E. coli* reverse mutation assay, an *in vitro* chromosomal aberration test in human lymphocytes, an *in vivo* cytogenetics assay for chromosome damage in rats, and the *in vivo* mouse micronucleus assay. The results were equivocal in an *in vitro* gene mutation assay using Chinese hamster V79 cells.

### Impairment of Fertility

No impairment of fertility or reproductive performance was seen in rats administered up to 18 mg/kg/day (6 times the MRHD on a mg/m<sup>2</sup> basis) orally from 14 days prior to mating through gestation and lactation in females, or for 60 days prior to mating in males.

## **13.2 Animal Toxicology and/or Pharmacology**

Memantine induced neuronal lesions (vacuolation and necrosis) in the multipolar and pyramidal cells in cortical layers III and IV of the posterior cingulate and retrosplenial neocortices in rats, similar to those which are known to occur in rodents administered other NMDA receptor antagonists. Lesions were seen after a single dose of memantine. In a study in which rats were given daily oral doses of memantine for 14 days, the no-effect dose for neuronal necrosis was 4 times the maximum recommended human dose (MRHD of 28 mg/day) on a mg/m<sup>2</sup> basis.

In acute and repeat-dose neurotoxicity studies in female rats, oral administration of memantine and donepezil in combination resulted in increased incidence, severity, and distribution of neurodegeneration compared with memantine alone. The no-effect levels of the combination were associated with clinically relevant plasma memantine and donepezil exposures.

The relevance of these findings to humans is unknown.

## **14 CLINICAL STUDIES**

The effectiveness of memantine hydrochloride extended-release capsules as a treatment for patients with moderate to severe Alzheimer's disease was based on the results of a double-blind, placebo-controlled trial.

### 24-week Study of Memantine Hydrochloride Extended-Release Capsules

This was a randomized double-blind clinical investigation in outpatients with moderate to severe Alzheimer's disease (diagnosed by DSM-IV criteria and NINCDS-ADRDA criteria for AD with a Mini Mental State Examination (MMSE) score  $\geq 3$  and  $\leq 14$  at Screening and Baseline) receiving acetylcholinesterase inhibitor (AChEI) therapy at a stable dose for 3 months prior to screening. The mean age of patients participating in this trial was 76.5 years with a range of 49-97 years. Approximately 72% of patients were female and 94% were Caucasian.

### Study Outcome Measures

The effectiveness of memantine hydrochloride extended-release capsules was evaluated in this study using the co-primary efficacy parameters of Severe Impairment Battery

(SIB) and the Clinician's Interview-Based Impression of Change (CIBIC-Plus).

The ability of memantine hydrochloride extended-release capsules to improve cognitive performance was assessed with the Severe Impairment Battery (SIB), a multi-item instrument that has been validated for the evaluation of cognitive function in patients with moderate to severe dementia. The SIB examines selected aspects of cognitive performance, including elements of attention, orientation, language, memory, visuospatial ability, construction, praxis, and social interaction. The SIB scoring range is from 0 to 100, with lower scores indicating greater cognitive impairment.

The ability of memantine hydrochloride extended-release capsules to produce an overall clinical effect was assessed using a Clinician's Interview Based Impression of Change that required the use of caregiver information, the CIBIC-Plus. The CIBIC-Plus is not a single instrument and is not a standardized instrument like the ADCS-ADL or SIB. Clinical trials for investigational drugs have used a variety of CIBIC formats, each different in terms of depth and structure. As such, results from a CIBIC-Plus reflect clinical experience from the trial or trials in which it was used and cannot be compared directly with the results of CIBIC-Plus evaluations from other clinical trials. The CIBIC-Plus used in this trial was a structured instrument based on a comprehensive evaluation at baseline and subsequent time-points of four domains: general (overall clinical status), functional (including activities of daily living), cognitive, and behavioral. It represents the assessment of a skilled clinician using validated scales based on his/her observation during an interview with the patient, in combination with information supplied by a caregiver familiar with the behavior of the patient over the interval rated. The CIBIC-Plus is scored as a seven point categorical rating, ranging from a score of 1, indicating "marked improvement" to a score of 4, indicating "no change" to a score of 7, indicating "marked worsening." The CIBIC-Plus has not been systematically compared directly to assessments not using information from caregivers (CIBIC) or other global methods.

### Study Results

In this study, 677 patients were randomized to one of the following 2 treatments: memantine hydrochloride extended-release capsules 28 mg/day or placebo while still receiving an AChEI (either donepezil, galantamine, or rivastigmine).

### Effects on Severe Impairment Battery (SIB)

Figure 1 shows the time course for the change from baseline in SIB score for the two treatment groups completing the 24 weeks of the study. At 24 weeks of treatment, the mean difference in the SIB change scores for the memantine hydrochloride extended-release capsule 28 mg/AChEI-treated (combination therapy) patients compared to the patients on placebo/AChEI (monotherapy) was 2.6 units. Using an LOCF analysis, memantine hydrochloride extended-release capsule 28 mg/AChEI treatment was statistically significantly superior to placebo/AChEI.

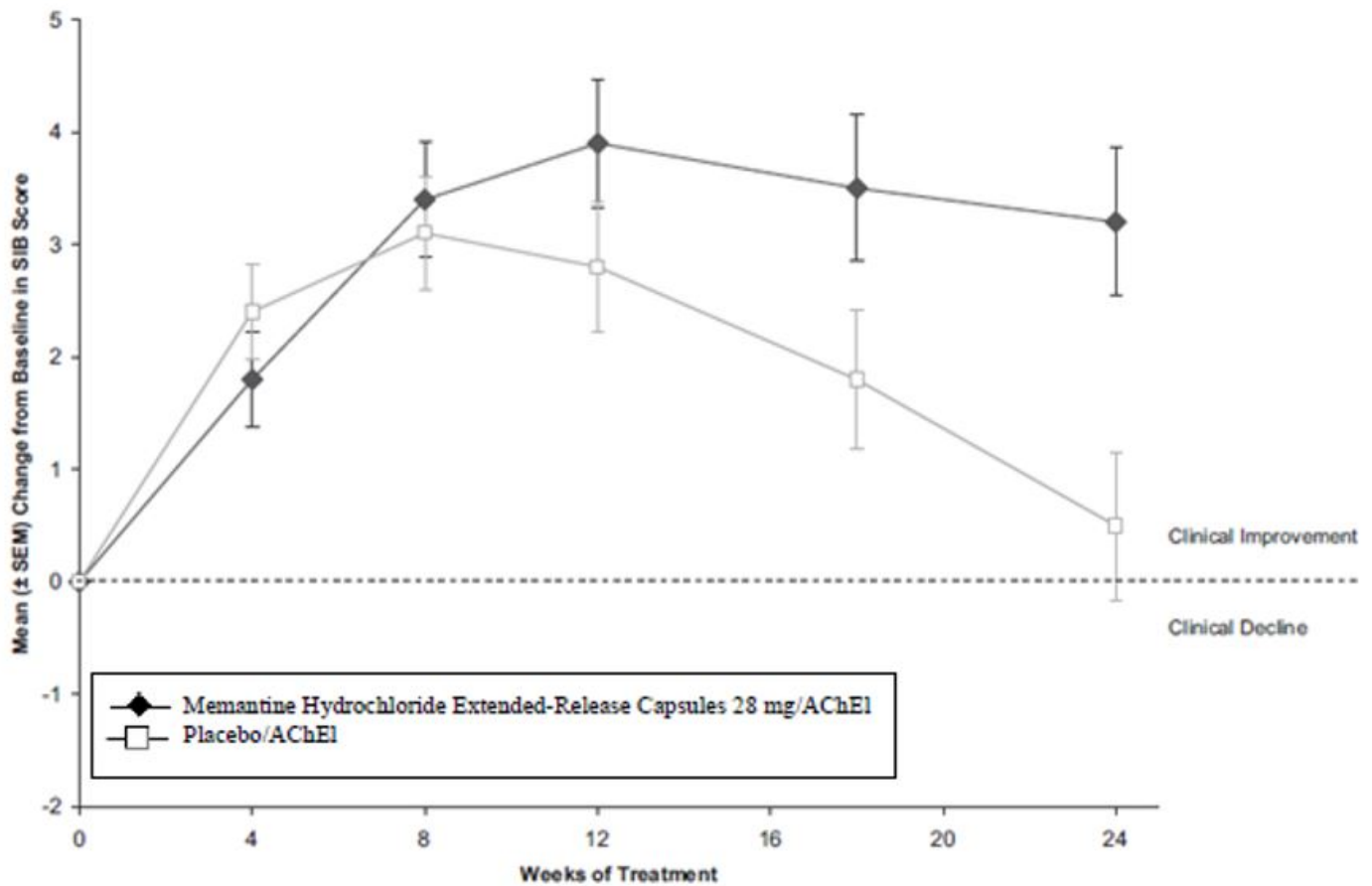


Figure 1: Time course of the change from baseline in SIB score for patients completing 24 weeks of treatment

Figure 2 shows the cumulative percentages of patients from each treatment group who had attained at least the measure of improvement in SIB score shown on the X axis. The curves show that both patients assigned to memantine hydrochloride extended-release capsule 28 mg/AChEI and placebo/AChEI have a wide range of responses, but that the memantine hydrochloride extended-release capsule 28 mg/AChEI group is more likely to show an improvement or a smaller decline.



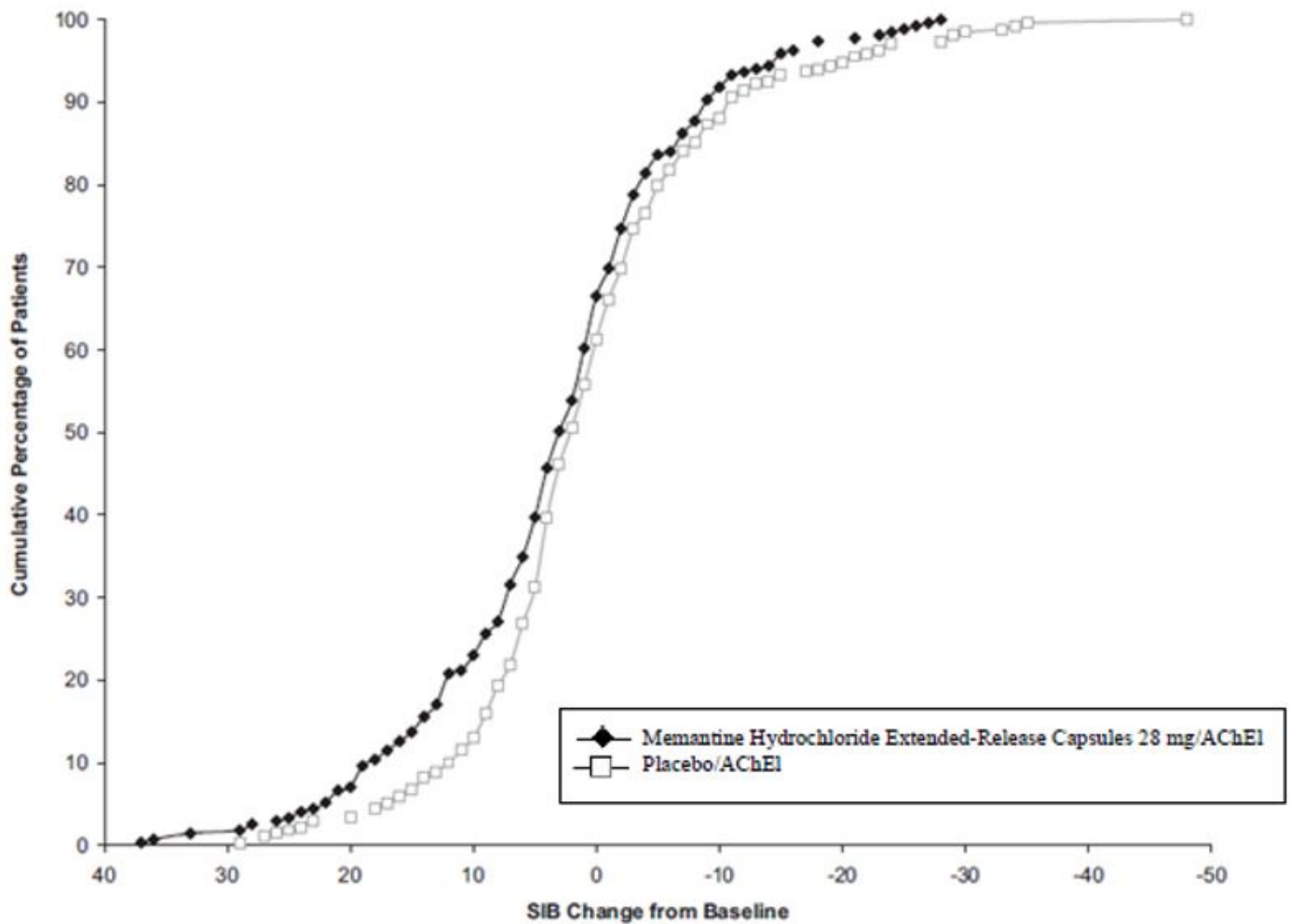


Figure 2: Cumulative percentage of patients completing 24 weeks of double-blind treatment with specified changes from baseline in SIB scores

Figure 3 shows the time course for the CIBIC-Plus score for patients in the two treatment groups completing the 24 weeks of the study. At 24 weeks of treatment, the mean difference in the CIBIC-Plus scores for the memantine hydrochloride extended-release capsule 28 mg/AChEI-treated patients compared to the patients on placebo/AChEI was 0.3 units. Using an LOCF analysis, memantine hydrochloride extended-release capsule 28 mg/AChEI treatment was statistically significantly superior to placebo/AChEI.

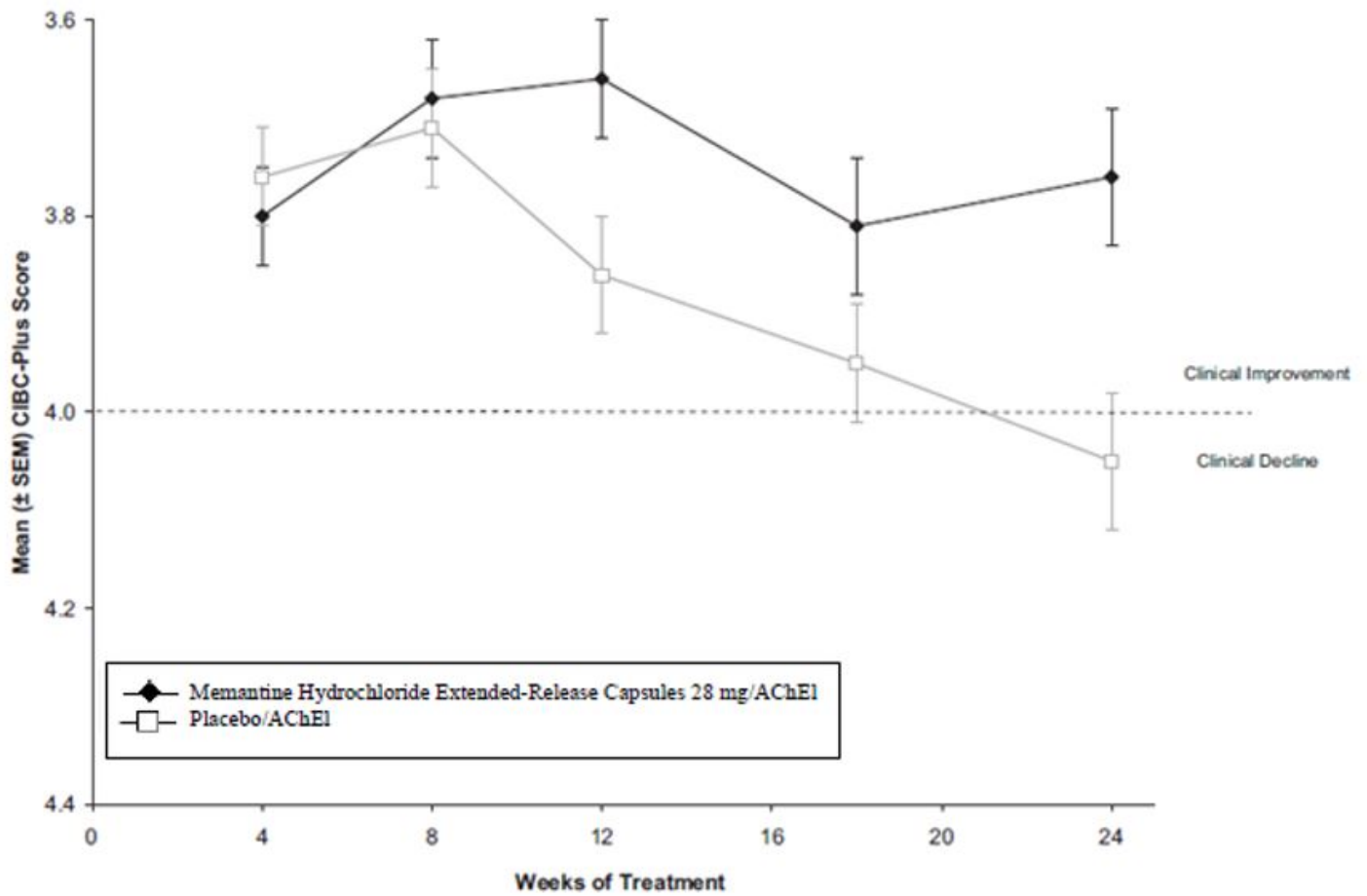


Figure 3: Time course of the CIBIC-Plus score for patients completing 24 weeks of treatment

Figure 4 is a histogram of the percentage distribution of CIBIC-Plus scores attained by patients assigned to each of the treatment groups who completed 24 weeks of treatment.

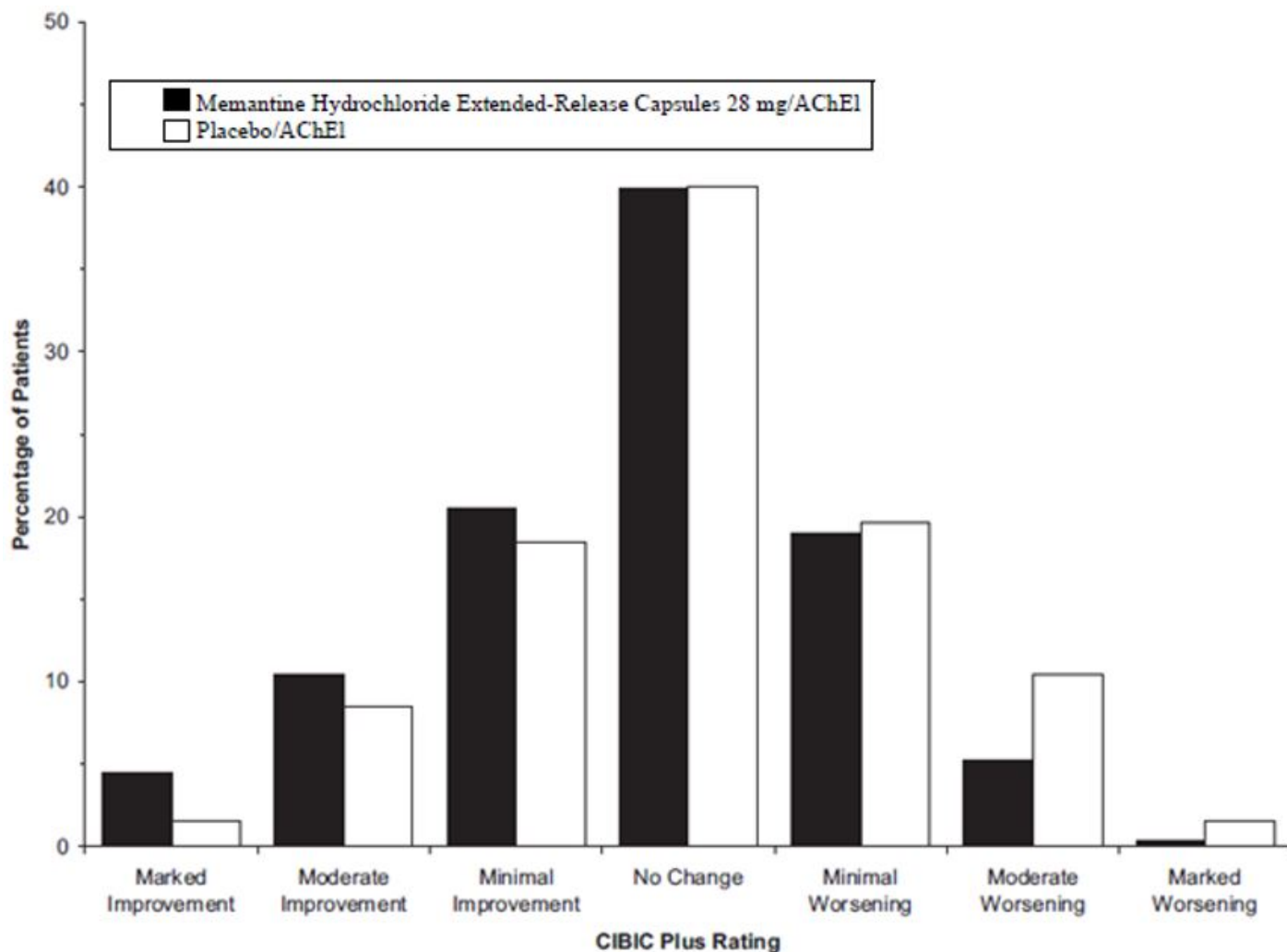


Figure 4: Distribution of CIBIC-Plus ratings at week 24

## 16 HOW SUPPLIED/STORAGE AND HANDLING

Memantine hydrochloride extended-release capsules 28 mg, are pink opaque cap and white opaque body, hard gelatin capsules, printed “28MG” on cap and “A266” on the body and are supplied as:

Bottles of 90 NDC 63629-2142-1

Store memantine hydrochloride extended-release capsules at 20° to 25°C (68° to 77°F); excursions permitted to 15° to 30°C (59° to 86°F) [see USP Controlled Room Temperature].

Dispense in a tight, light-resistant container as defined in the USP.

## 17 PATIENT COUNSELING INFORMATION

Advise the patient to read the FDA-approved patient labeling (Patient Information).

- To assure safe and effective use of memantine hydrochloride extended-release capsules, the information and instructions provided in the patient information section should be discussed with patients and caregivers.

- Instruct patients and caregivers to take memantine hydrochloride extended-release capsules only once per day, as prescribed.
- Instruct patients and caregivers that memantine hydrochloride extended-release capsules be swallowed whole. Alternatively, memantine hydrochloride extended-release capsules may be opened and sprinkled on applesauce and the entire contents should be consumed. The capsules should not be divided, chewed or crushed.
- Warn patients not to use any capsules of memantine hydrochloride extended-release capsules that are damaged or show signs of tampering.
- If a patient misses a single dose of memantine hydrochloride extended-release capsules, that patient should not double up on the next dose. The next dose should be taken as scheduled. If a patient fails to take memantine hydrochloride extended-release capsules for several days, dosing should not be resumed without consulting that patient's healthcare professional.
- Advise patients and caregivers that memantine hydrochloride extended-release capsules may cause headache, diarrhea, and dizziness.

All brand names listed are the registered trademarks of their respective owners and are not trademarks of ANI Pharmaceuticals, Inc.

Distributed by:  
ANI Pharmaceuticals, Inc.  
Baudette, MN 56623



10447 Rev 03/21

## **PATIENT INFORMATION**

### **Memantine Hydrochloride Extended-Release Capsules**

(me-MAN-teen HYE-droe-KLOR-ide Extended-Release Capsules)

Read this Patient Information that comes with memantine hydrochloride extended-release capsules before you start taking it and each time you get a refill. There may be new information. This information does not take the place of talking to your doctor about your medical condition or your treatment.

#### **What are memantine hydrochloride extended-release capsules?**

Memantine hydrochloride extended-release capsules are a prescription medicine used for the treatment of moderate to severe dementia in people with Alzheimer's disease. Memantine hydrochloride extended-release capsules belong to a class of medicines called N-methyl-D-aspartate (NMDA) inhibitors.

It is not known if memantine hydrochloride extended-release capsules are safe and effective in children.

#### **Who should not take memantine hydrochloride extended-release capsules?**

**Do not take memantine hydrochloride extended-release capsules if you** are allergic to memantine or any of the other ingredients in memantine hydrochloride extended-release capsules. See the end of this leaflet for a complete list of ingredients in

memantine hydrochloride extended-release capsules.

## **What should I tell my doctor before taking memantine hydrochloride extended-release capsules?**

**Before you take memantine hydrochloride extended-release capsules, tell your doctor if you:**

- have or have had seizures
- have or have had problems passing urine
- have or have had bladder or kidney problems
- have liver problems
- have any other medical conditions
- are pregnant or plan to become pregnant. It is not known if memantine hydrochloride extended-release capsules will harm your unborn baby.
- are breastfeeding or plan to breastfeed. It is not known if memantine passes into your breast milk. Talk to your doctor about the best way to feed your baby if you take memantine hydrochloride extended-release capsules.

**Tell your doctor about all the medicines you take**, including prescription and nonprescription medicines, vitamins, and herbal supplements.

Taking memantine hydrochloride extended-release capsules with certain other medicines may affect each other. Taking memantine hydrochloride extended-release capsules with other medicines can cause serious side effects.

Especially tell your doctor if you take:

- other NMDA antagonists such as amantadine, ketamine, and dextromethorphan
- medicines that make your urine alkaline such as carbonic anhydrase inhibitors and sodium bicarbonate

Ask your doctor or pharmacist for a list of these medicines, if you are not sure.

Know the medicines you take. Keep a list of them to show your doctor and pharmacist when you get a new medicine.

## **How should I take memantine hydrochloride extended-release capsules?**

- Your doctor will tell you how much memantine hydrochloride extended-release capsules to take and when to take it.
- Your doctor may change your dose if needed.
- Memantine hydrochloride extended-release capsules may be taken with food or without food.
- Memantine hydrochloride extended-release capsules may be opened and sprinkled on applesauce before swallowing, but the contents of the entire capsule should be taken and the dose should not be divided. Except when opened and sprinkled on applesauce, memantine hydrochloride extended-release capsules must be swallowed whole and never crushed, divided or chewed.
- Do not use any capsules of memantine hydrochloride extended-release capsules that are damaged or show signs of tampering.
- If you are currently taking another formulation of memantine, talk to your healthcare professional about how to switch to memantine hydrochloride extended-release capsules.

- If you forget to take one dose of memantine hydrochloride extended-release capsules, do not double up on the next dose. You should take only the next dose as scheduled.
- If you have forgotten to take memantine hydrochloride extended-release capsules for several days, you should not take the next dose until you talk to your doctor.
- If you take too much memantine hydrochloride extended-release capsules, call your doctor or poison control center at 1-800-222-1222, or go to the nearest hospital emergency room right away.

### **What are the possible side effects of memantine hydrochloride extended-release capsules?**

#### **Memantine hydrochloride extended-release capsules may cause side effects, including:**

The most common side effects of memantine hydrochloride extended-release capsules include:

- headache
- diarrhea
- dizziness

These are not all the possible side effects of memantine hydrochloride extended-release capsules. For more information, ask your doctor or pharmacist.

Call your doctor for medical advice about side effects. You may report side effects to FDA at 1-800-FDA-1088.

#### **How should I store memantine hydrochloride extended-release capsules?**

- Store memantine hydrochloride extended-release capsules at room temperature between 68°F to 77°F (20°C to 25°C).

#### **Keep memantine hydrochloride extended-release capsules and all medicines out of the reach of children.**

#### **What are the ingredients in memantine hydrochloride extended-release capsules?**

Active ingredient: memantine hydrochloride

Inactive ingredients: colloidal silicon dioxide, ethylcellulose, hydroxypropyl cellulose, hypromellose, medium chain triglycerides, oleic acid, polyethylene glycol, sugar spheres and talc, in hard gelatin capsules (containing gelatin, titanium dioxide and red iron oxide) imprinted with black ink containing black iron oxide, potassium hydroxide (14 mg and 28 mg), propylene glycol, and shellac.

#### **General information about the safe and effective use of memantine hydrochloride extended-release capsules:**

Medicines are sometimes prescribed for purposes other than those listed in a Patient Information leaflet. Do not take memantine hydrochloride extended-release capsules for a condition for which it was not prescribed. Do not give memantine hydrochloride extended-release capsules to other people, even if they have the same condition. It may harm them.

This Patient Information leaflet summarizes the most important information about memantine hydrochloride extended-release capsules. If you would like more information, talk with your doctor. You can ask your doctor or pharmacist for information about memantine hydrochloride extended-release capsules that was written for healthcare professionals.

For more information about memantine hydrochloride extended-release capsules, go to [www.anipharma.com](http://www.anipharma.com), or call ANI Pharmaceuticals, Inc. at 1-800-308-6755.

This Patient Information has been approved by the U.S. Food and Drug Administration.

Distributed by:  
ANI Pharmaceuticals, Inc.  
Baudette, MN 56623



10447 Rev 03/21

## Memantine Hydrochloride 28 mg Cap, #90



GTIN  
Lot  
Exp  
SN

Each tablet contains: Memantine Hydrochloride, USP 28 mg

Keep this and all medication out of the reach of children.

Store at 20° to 25°C (68° to 77°F) [See USP Controlled Room Temperature].

Dispense in a tight, light-resistant container as defined in the USP with a child-resistant closure.

NDC 63629-2142-1

**Memantine Hydrochloride  
ER Capsules**

**28 mg**



Relabeled by:  
Bryant Ranch Prepack, Inc.  
Burbank, CA 91504 USA

Rx only  
**90 Tablets**



## MEMANTINE HYDROCHLORIDE

memantine hydrochloride capsule, extended release

### Product Information

<b>Product Type</b>	HUMAN PRESCRIPTION DRUG	<b>Item Code (Source)</b>	NDC:63629-2142(NDC:43975-266)
<b>Route of Administration</b>	ORAL		

### Active Ingredient/Active Moiety

Ingredient Name	Basis of Strength	Strength
<b>MEMANTINE HYDROCHLORIDE</b> (UNII: JYOWD0UA60) (MEMANTINE - UNII:W8O17SJF3T)	MEMANTINE HYDROCHLORIDE	28 mg

## Inactive Ingredients

Ingredient Name	Strength
<b>SUCROSE</b> (UNII: C151H8M554)	
<b>HYDROXYPROPYL CELLULOSE (90000 WAMW)</b> (UNII: UKE75GEA7F)	
<b>TALC</b> (UNII: 7SEV7J4R1U)	
<b>ETHYLCELLULOSE (7 MPA.S)</b> (UNII: H3UP11403C)	
<b>HYPROMELLOSE 2910 (5 MPA.S)</b> (UNII: R75537T0T4)	
<b>SILICON DIOXIDE</b> (UNII: ETJ7Z6XBU4)	
<b>GELATIN, UNSPECIFIED</b> (UNII: 2G86QN327L)	
<b>TITANIUM DIOXIDE</b> (UNII: 15FIX9V2JP)	
<b>FERRIC OXIDE RED</b> (UNII: 1K09F3G675)	
<b>POLYETHYLENE GLYCOL 400</b> (UNII: B697894SGQ)	
<b>MEDIUM-CHAIN TRIGLYCERIDES</b> (UNII: C9H2L21V7U)	
<b>OLEIC ACID</b> (UNII: 2UMI9U37CP)	
<b>FERROSFERRIC OXIDE</b> (UNII: XM0M87F357)	
<b>POTASSIUM HYDROXIDE</b> (UNII: WZH3C48M4T)	
<b>PROPYLENE GLYCOL</b> (UNII: 6DC9Q167V3)	
<b>SHELLAC</b> (UNII: 46N107B71O)	
<b>STARCH, CORN</b> (UNII: O8232NY3SJ)	

## Product Characteristics

<b>Color</b>	WHITE (white opaque body) , PINK (pink opaque cap)	<b>Score</b>	no score
<b>Shape</b>	CAPSULE	<b>Size</b>	18mm
<b>Flavor</b>		<b>Imprint Code</b>	28MG;A266
<b>Contains</b>			

## Packaging

#	Item Code	Package Description	Marketing Start Date	Marketing End Date
1	NDC:63629-2142-1	90 in 1 BOTTLE; Type 0: Not a Combination Product	05/19/2020	

## Marketing Information

Marketing Category	Application Number or Monograph Citation	Marketing Start Date	Marketing End Date
ANDA	ANDA205365	05/19/2020	

**Labeler** - Bryant Ranch Prepack (171714327)

**Registrant** - Bryant Ranch Prepack (171714327)

## Establishment

Name	Address	ID/FEI	Business Operations
------	---------	--------	---------------------



Bryant Ranch Prepack		171714327	REPACK(63629-2142) , RELABEL(63629-2142)
----------------------	--	-----------	--

Revised: 1/2023

Bryant Ranch Prepack