

ZOLPIDEM- zolpidem tartrate tablet

Bryant Ranch Prepack

HIGHLIGHTS OF PRESCRIBING INFORMATION

These highlights do not include all the information needed to use ZOLPIDEM TARTRATE TABLETS safely and effectively. See full prescribing information for ZOLPIDEM TARTRATE TABLETS.

ZOLPIDEM TARTRATE tablets, for oral use, CIV
Initial U.S. Approval: 1992

WARNING: COMPLEX SLEEP BEHAVIORS

See full prescribing information for complete boxed warning.

Complex sleep behaviors including sleep-walking, sleep-driving, and engaging in other activities while not fully awake may occur following use of Zolpidem Tartrate Tablets. Some of these events may result in serious injuries, including death. Discontinue Zolpidem Tartrate Tablets immediately if a patient experiences a complex sleep behavior. (4, 5.1)

-----RECENT MAJOR CHANGES-----

Dosage and Administration (2.1)	2/2022
Warnings and Precautions (5.5)	2/2022
Warnings and Precautions (5.7)	2/2022

-----INDICATIONS AND USAGE-----

Zolpidem Tartrate Tablets, a gamma-aminobutyric acid (GABA) A receptor positive modulator, is indicated for the short-term treatment of insomnia characterized by difficulties with sleep initiation. (1)

-----DOSAGE AND ADMINISTRATION-----

- Use the lowest dose effective for the patient and must not exceed a total of 10 mg daily (2.1)
- Treatment should be as short as possible (2.1)
- Recommended initial dose is a single dose of 5 mg for women and a single dose of 5 or 10 mg for men, immediately before bedtime with at least 7-8 hours remaining before the planned time of awakening (2.1)
- Geriatric patients and patients with mild to moderate hepatic impairment: Recommended dose is 5 mg for men and women (2.2)
- Lower doses of CNS depressants may be necessary when taken concomitantly with Zolpidem Tartrate Tablets (2.3)
- The effect of Zolpidem Tartrate Tablets may be slowed if taken with or immediately after a meal (2.4)

-----DOSAGE FORMS AND STRENGTHS-----

5 mg and 10 mg tablets. Tablets not scored. (3)

-----CONTRAINDICATIONS-----

- Patients who have experienced complex sleep behaviors after taking Zolpidem Tartrate Tablets (4)
- Known hypersensitivity to Zolpidem (4)

-----WARNINGS AND PRECAUTIONS-----

- CNS-Depressant Effects: Impairs alertness and motor coordination including risk of morning impairment. Risk increases with dose and use with other CNS depressants and alcohol. Caution patients against driving and other activities requiring mental alertness the morning after use. Instruct patients on correct use. (5.2)
- Need to Evaluate for Comorbid Diagnoses: Re-evaluate if insomnia persists after 7 to 10 days of use. (5.3)
- Severe Anaphylactic/Anaphylactoid Reactions: Angioedema and anaphylaxis have been reported. Do not rechallenge if such reactions occur. (5.4)
- Abnormal Thinking and Behavioral Changes: Changes including decreased inhibition, bizarre behavior,

- agitation, and depersonalization have been reported. Immediately evaluate any new onset behavioral changes. (5.5)
- Depression: Worsening of depression or suicidal thinking may occur. Prescribe the least amount of tablets feasible to avoid intentional overdose. (5.6)
 - Respiratory Depression: Consider this risk before prescribing in patients with compromised respiratory function. (5.7)
 - Hepatic Impairment: Avoid Zolpidem Tartrate Tablets use in patients with severe hepatic impairment. (5.8)
 - Withdrawal Effects: Symptoms may occur with rapid dose reduction or discontinuation. (5.9, 9.3)

ADVERSE REACTIONS

Most commonly observed adverse reactions were:

Short-term (<10 nights): Drowsiness, dizziness, and diarrhea

Long-term (28-35 nights): Dizziness and drugged feelings (6.1)

To report SUSPECTED ADVERSE REACTIONS, contact ACI Healthcare USA, Inc. at 1- 888-802-1213 or www.acihealthcareusa.com or FDA at 1-800-FDA-1088 or www.fda.gov/medwatch.

DRUG INTERACTIONS

- CNS depressants, including alcohol: Possible adverse additive CNS- depressant effects (5.1, 7.1)
- Opioids: Concomitant use may increase risk of respiratory depression (5.7, 7.1)
- Imipramine: Decreased alertness observed (7.1)
- Chlorpromazine: Impaired alertness and psychomotor performance observed (7.1)
- CYP3A4 inducers (rifampin or St. John's wort): Combination use may decrease effect (7.2)
- Ketoconazole: Combination use may increase effect (7.2)

USE IN SPECIFIC POPULATIONS

- Pregnancy: May cause respiratory depression and sedation in neonates with exposure late in the third trimester. (8.1)
- Lactation: A lactating woman may pump and discard breast milk during treatment and for 23 hours after Zolpidem Tartrate Tablets administration. (8.2)
- Pediatric use: Safety and effectiveness not established. Hallucinations (incidence rate 7%) and other psychiatric and/or nervous system adverse reactions were observed frequently in a study of pediatric patients with Attention-Deficit/Hyperactivity Disorder. (5.4, 8.4)

See 17 for PATIENT COUNSELING INFORMATION and Medication Guide.

Revised: 4/2024

FULL PRESCRIBING INFORMATION: CONTENTS*

WARNING: COMPLEX SLEEP BEHAVIOUR

1 INDICATIONS AND USAGE

2 DOSAGE AND ADMINISTRATION

2.1 Dosage in Adults

2.2 Special Populations

2.3 Use with CNS Depressants

2.4 Administration

3 DOSAGE FORMS AND STRENGTHS

4 CONTRAINDICATIONS

5 WARNINGS AND PRECAUTIONS

5.1 Complex Sleep Behaviors

5.2 CNS-Depressant Effects and Next-Day Impairment

5.3 Need to Evaluate for Comorbid Diagnoses

5.4 Severe Anaphylactic and Anaphylactoid Reactions

5.5 Abnormal Thinking and Behavioral Changes

- 5.6 Use in Patients with Depression
- 5.7 Respiratory Depression
- 5.8 Precipitation of Hepatic Encephalopathy
- 5.9 Withdrawal Effects

6 ADVERSE REACTIONS

- 6.1 Clinical Trials Experience
- 6.2 Postmarketing Experience

7 DRUG INTERACTIONS

- 7.1 CNS-Active Drugs
- 7.2 Drugs that Affect Drug Metabolism via Cytochrome P450

8 USE IN SPECIFIC POPULATIONS

- 8.1 Pregnancy
- 8.2 Lactation
- 8.4 Pediatric Use
- 8.5 Geriatric Use
- 8.6 Gender Difference in Pharmacokinetics
- 8.7 Hepatic Impairment

9 DRUG ABUSE AND DEPENDENCE

- 9.1 Controlled Substance
- 9.2 Abuse
- 9.3 Dependence

10 OVERDOSAGE

- 10.1 Signs and Symptoms
- 10.2 Recommended Treatment

11 DESCRIPTION

12 CLINICAL PHARMACOLOGY

- 12.1 Mechanism of Action
- 12.2 Pharmacodynamics
- 12.3 Pharmacokinetics

13 NONCLINICAL TOXICOLOGY

- 13.1 Carcinogenesis, Mutagenesis, Impairment of Fertility

14 CLINICAL STUDIES

- 14.1 Transient Insomnia
- 14.2 Chronic Insomnia
- 14.3 Studies Pertinent to Safety Concerns for Sedative/Hypnotic Drugs

16 HOW SUPPLIED/STORAGE AND HANDLING

17 PATIENT COUNSELING INFORMATION

* Sections or subsections omitted from the full prescribing information are not listed.

FULL PRESCRIBING INFORMATION

WARNING: COMPLEX SLEEP BEHAVIOUR

Complex sleep behaviors including sleep-walking, sleep-driving, and engaging in other activities while not fully awake may occur following use of Zolpidem Tartrate Tablets. Some of these events may result in serious injuries, including death. Discontinue Zolpidem Tartrate Tablets immediately if a patient experiences a complex sleep behavior [see *Contraindications (4) and Warnings and Precautions (5.1)*].

1 INDICATIONS AND USAGE

Zolpidem Tartrate Tablets is indicated for the short-term treatment of insomnia characterized by difficulties with sleep initiation. Zolpidem Tartrate Tablets has been shown to decrease sleep latency for up to 35 days in controlled clinical studies [see *Clinical Studies (14)*].

The clinical trials performed in support of efficacy were 4–5 weeks in duration with the final formal assessments of sleep latency performed at the end of treatment.

2 DOSAGE AND ADMINISTRATION

2.1 Dosage in Adults

Use the lowest effective dose for the patient. The recommended initial dose is 5 mg for women and either 5 or 10 mg for men, taken only once per night immediately before bedtime with at least 7–8 hours remaining before the planned time of awakening. If the 5 mg dose is not effective, the dose can be increased to 10 mg. In some patients, the higher morning blood levels following use of the 10 mg dose increase the risk of next-day impairment of driving and other activities that require full alertness [see *Warnings and Precautions (5.2)*]. The total dose of Zolpidem Tartrate Tablets should not exceed 10 mg once daily immediately before bedtime. Zolpidem Tartrate Tablets should be taken as a single dose and should not be readministered during the same night.

The recommended initial doses for women and men are different because Zolpidem clearance is lower in women.

Long-term use of Zolpidem Tartrate Tablets is not recommended. Treatment should be as short as possible. Extended treatment should not take place without re-evaluation of the patient's status because the risk of abuse and dependence increase with the duration of treatment [see *Drug Abuse and Dependence (9.3)*]

2.2 Special Populations

Elderly or debilitated patients may be especially sensitive to the effects of Zolpidem tartrate. The recommended dose of Zolpidem Tartrate Tablets in these patients is 5 mg once daily immediately before bedtime [see *Warnings and Precautions (5.2), Use in Specific Populations (8.5)*].

Patients with mild to moderate hepatic impairment do not clear the drug as rapidly as normal subjects. The recommended dose of Zolpidem Tartrate Tablets in these patients is 5 mg once daily immediately before bedtime. Avoid Zolpidem Tartrate Tablets use in

patients with severe hepatic impairment as it may contribute to encephalopathy [see *Warnings and Precautions (5.8)*, *Use in Specific Populations (8.7)*, *Clinical Pharmacology (12.3)*].

2.3 Use with CNS Depressants

Dosage adjustment may be necessary when Zolpidem Tartrate Tablets is combined with other CNS-depressant drugs because of the potentially additive effects [see *Warnings and Precautions (5.2, 5.7)*].

2.4 Administration

The effect of Zolpidem Tartrate Tablets may be slowed by ingestion with or immediately after a meal.

3 DOSAGE FORMS AND STRENGTHS

Zolpidem Tartrate Tablets, USP is available in 5 mg and 10 mg strength tablets for oral administration. Tablets are not scored.

Zolpidem Tartrate Tablets, USP 5 mg is pink film coated, round biconvex tablets, debossed "IT 117" on one side, other side is plain.

Zolpidem Tartrate Tablets, USP 10 mg is white film coated, round biconvex tablets, debossed "IT 118" on one side, other side is plain.

4 CONTRAINDICATIONS

Zolpidem Tartrate Tablets is contraindicated in patients

- who have experienced complex sleep behaviors after taking Zolpidem Tartrate Tablets [see *Warnings and Precautions (5.1)*]
- with known hypersensitivity to zolpidem. Observed reactions include anaphylaxis and angioedema [see *Warnings and Precautions (5.4)*]

5 WARNINGS AND PRECAUTIONS

5.1 Complex Sleep Behaviors

Complex sleep behaviors, including sleep-walking, sleep-driving, and engaging in other activities while not fully awake, may occur following the first or any subsequent use of Zolpidem Tartrate Tablets. Patients can be seriously injured or injure others during complex sleep behaviors. Such injuries may result in a fatal outcome. Other complex sleep behaviors (e.g., preparing and eating food, making phone calls, or having sex) have also been reported. Patients usually do not remember these events. Postmarketing reports have shown that complex sleep behaviors may occur with Zolpidem Tartrate Tablets alone at recommended doses, with or without the concomitant use of alcohol or other central nervous system (CNS) depressants [see *Drug Interaction (7.1)*].

Discontinue Zolpidem Tartrate Tablets immediately if a patient experiences a complex sleep behavior [see *Contraindications (4)*].

5.2 CNS-Depressant Effects and Next-Day Impairment

Zolpidem Tartrate Tablets, like other sedative-hypnotic drugs, has CNS-depressant effects. Coadministration with other CNS depressants (e.g., benzodiazepines, opioids, tricyclic antidepressants, alcohol) increases the risk of CNS depression [see *Drug Interaction (7.1)*]. Dosage adjustments of Zolpidem Tartrate Tablets and of other concomitant CNS depressants may be necessary when Zolpidem Tartrate Tablets is administered with such agents because of the potentially additive effects. The use of Zolpidem Tartrate Tablets with other sedative-hypnotics (including other zolpidem products) at bedtime or the middle of the night is not recommended [see *Dosage and Administration (2.3)*]

The risk of next-day psychomotor impairment, including impaired driving, is increased if Zolpidem Tartrate Tablets is taken with less than a full night of sleep remaining (7 to 8 hours); if a higher than the recommended dose is taken; if coadministered with other CNS depressants or alcohol; or if coadministered with other drugs that increase the blood levels of zolpidem. Patients should be warned against driving and other activities requiring complete mental alertness if Zolpidem Tartrate Tablets is taken in these circumstances [see *Dosage and Administration (2)*, *Clinical Studies (14.3)*]

Vehicle drivers and machine operators should be warned that, as with other hypnotics, there may be a possible risk of adverse reactions including drowsiness, prolonged reaction time, dizziness, sleepiness, blurred/double vision, reduced alertness, and impaired driving the morning after therapy. In order to minimize this risk a full night of sleep (7–8 hours) is recommended.

Because Zolpidem Tartrate Tablets can cause drowsiness and a decreased level of consciousness, patients, particularly the elderly, are at higher risk of falls.

5.3 Need to Evaluate for Comorbid Diagnoses

Because sleep disturbances may be the presenting manifestation of a physical and/or psychiatric disorder, symptomatic treatment of insomnia should be initiated only after a careful evaluation of the patient. The failure of insomnia to remit after 7 to 10 days of treatment may indicate the presence of a primary psychiatric and/or medical illness that should be evaluated. Worsening of insomnia or the emergence of new thinking or behavior abnormalities may be the consequence of an unrecognized psychiatric or physical disorder. Such findings have emerged during the course of treatment with sedative/hypnotic drugs, including zolpidem.

5.4 Severe Anaphylactic and Anaphylactoid Reactions

Cases of angioedema involving the tongue, glottis or larynx have been reported in patients after taking the first or subsequent doses of sedative-hypnotics, including zolpidem. Some patients have had additional symptoms such as dyspnea, throat closing or nausea and vomiting that suggest anaphylaxis. Some patients have required medical therapy in the emergency department. If angioedema involves the throat, glottis or larynx, airway obstruction may occur and be fatal. Patients who develop angioedema after treatment with zolpidem should not be rechallenged with the drug.

5.5 Abnormal Thinking and Behavioral Changes

Abnormal thinking and behavior changes have been reported in patients treated with sedative/hypnotics, including Zolpidem Tartrate Tablets. Some of these changes included

decreased inhibition (e.g., aggressiveness and extroversion that seemed out of character), bizarre behavior, agitation and depersonalization. Visual and auditory hallucinations have been reported.

In controlled trials of Zolpidem Tartrate Tablets 10 mg taken at bedtime <1% of adults with insomnia reported hallucinations. In a clinical trial, 7% of pediatric patients treated with Zolpidem Tartrate Tablets 0.25 mg/kg taken at bedtime reported hallucinations versus 0% treated with placebo [see *Use in Specific Populations (8.4)*]. There have been postmarketing reports of delirium with zolpidem use [Adverse Reactions (6.2)].

It can rarely be determined with certainty whether a particular instance of the abnormal behaviors listed above is drug induced, spontaneous in origin, or a result of an underlying psychiatric or physical disorder. Nonetheless, the emergence of any new behavioral sign or symptom of concern requires careful and immediate evaluation.

5.6 Use in Patients with Depression

In primarily depressed patients treated with sedative-hypnotics, worsening of depression, and suicidal thoughts and actions (including completed suicides), have been reported. Suicidal tendencies may be present in such patients and protective measures may be required. Intentional overdose is more common in this group of patients; therefore, the lowest number of tablets that is feasible should be prescribed for the patient at any one time.

5.7 Respiratory Depression

Although studies with 10 mg zolpidem tartrate did not reveal respiratory depressant effects at hypnotic doses in healthy subjects or in patients with mild to moderate chronic obstructive pulmonary disease (COPD), a reduction in the Total Arousal Index, together with a reduction in lowest oxygen saturation and increase in the times of oxygen desaturation below 80% and 90%, was observed in patients with mild to moderate sleep apnea when treated with zolpidem compared to placebo. Since sedative-hypnotics have the capacity to depress respiratory drive, precautions should be taken if Zolpidem Tartrate Tablets is prescribed to patients with compromised respiratory function or concomitant use with opioids or other CNS depressants. Postmarketing reports of respiratory insufficiency in patients receiving 10 mg of zolpidem tartrate, most of whom had pre-existing respiratory impairment, have been reported. The risk of respiratory depression should be considered prior to prescribing Zolpidem Tartrate Tablets in patients with respiratory impairment including sleep apnea and myasthenia gravis or with concomitant opioid use [see *Dosage and Administration (2.3)*, *Drug Interactions (7.1)*].

5.8 Precipitation of Hepatic Encephalopathy

Drugs affecting GABA receptors, such as zolpidem tartrate, have been associated with precipitation of hepatic encephalopathy in patients with hepatic insufficiency. In addition, patients with hepatic insufficiency do not clear zolpidem tartrate as rapidly as patients with normal hepatic function. Avoid Zolpidem Tartrate Tablets use in patients with severe hepatic impairment as it may contribute to encephalopathy [see *Dosage and Administration (2.2)*, *Use in Specific Populations (8.7)*, *Clinical Pharmacology (12.3)*]

5.9 Withdrawal Effects

There have been reports of withdrawal signs and symptoms following the rapid dose

decrease or abrupt discontinuation of zolpidem. Monitor patients for tolerance, abuse, and dependence [see *Drug Abuse and Dependence (9.2, 9.3)*]

6 ADVERSE REACTIONS

The following serious adverse reactions are discussed in greater detail in other sections of the labeling:

- Complex Sleep Behaviors [see *Warnings and Precautions (5.1)*]
- CNS-depressant effects and next-day impairment [see *Warnings and Precautions (5.2)*]
- Severe anaphylactic and anaphylactoid reactions [see *Warnings and Precautions (5.4)*]
- Abnormal thinking and behavior changes [see *Warnings and Precautions (5.5)*]
- Withdrawal effects [see *Warnings and Precautions (5.9)*]

6.1 Clinical Trials Experience

Associated with Discontinuation of Treatment

Approximately 4% of 1,701 patients who received Zolpidem at all doses (1.25 to 90 mg) in U.S. premarketing clinical trials discontinued treatment because of an adverse reaction. Reactions most commonly associated with discontinuation from U.S. trials were daytime drowsiness (0.5%), dizziness (0.4%), headache (0.5%), nausea (0.6%), and vomiting (0.5%).

Approximately 4% of 1,959 patients who received Zolpidem at all doses (1 to 50 mg) in similar foreign trials discontinued treatment because of an adverse reaction. Reactions most commonly associated with discontinuation from these trials were daytime drowsiness (1.1%), dizziness/vertigo (0.8%), amnesia (0.5%), nausea (0.5%), headache (0.4%), and falls (0.4%).

Data from a clinical study in which selective serotonin reuptake inhibitor (SSRI)-treated patients were given Zolpidem revealed that four of the seven discontinuations during double-blind treatment with Zolpidem (n=95) were associated with impaired concentration, continuing or aggravated depression, and manic reaction; one patient treated with placebo (n=97) was discontinued after an attempted suicide.

Most Commonly Observed Adverse Reactions in Controlled Trials

During short-term treatment (up to 10 nights) with Zolpidem Tartrate Tablets at doses up to 10 mg, the most commonly observed adverse reactions associated with the use of Zolpidem and seen at statistically significant differences from placebo-treated patients were drowsiness (reported by 2% of Zolpidem patients), dizziness (1%), and diarrhea (1%). During longer-term treatment (28 to 35 nights) with Zolpidem at doses up to 10 mg, the most commonly observed adverse reactions associated with the use of Zolpidem and seen at statistically significant differences from placebo-treated patients were dizziness (5%) and drugged feelings (3%).

Adverse Reactions Observed at an Incidence of $\geq 1\%$ in Controlled Trials

The following tables enumerate treatment-emergent adverse reactions frequencies that were observed at an incidence equal to 1% or greater among patients with insomnia who received Zolpidem Tartrate and at a greater incidence than placebo in U.S. placebo-

controlled trials. Events reported by investigators were classified utilizing a modified World Health Organization (WHO) dictionary of preferred terms for the purpose of establishing event frequencies. The prescriber should be aware that these figures cannot be used to predict the incidence of side effects in the course of usual medical practice, in which patient characteristics and other factors differ from those that prevailed in these clinical trials. Similarly, the cited frequencies cannot be compared with figures obtained from other clinical investigators involving related drug products and uses, since each group of drug trials is conducted under a different set of conditions. However, the cited figures provide the physician with a basis for estimating the relative contribution of drug and nondrug factors to the incidence of side effects in the population studied.

The following table was derived from results of 11 placebo-controlled short-term U.S. efficacy trials involving Zolpidem in doses ranging from 1.25 to 20 mg. The table is limited to data from doses up to and including 10 mg, the highest dose recommended for use.

Table 1: Incidence of Treatment-Emergent Adverse Experiences in Placebo-Controlled Clinical Trials Lasting up to 10 Nights (percentage of patients reporting)

Body System Adverse Event*	Zolpidem (≤10 mg) (N=685)	Placebo (N=473)
Central and Peripheral Nervous System		
Headache	7	6
Drowsiness	2	-
Dizziness	1	-
Gastrointestinal System		
Diarrhea	1	-

* Reactions reported by at least 1% of patients treated with Zolpidem Tartrate Tablets and at a greater frequency than placebo.

The following table was derived from results of three placebo-controlled long-term efficacy trials involving Zolpidem Tartrate Tablets. These trials involved patients with chronic insomnia who were treated for 28 to 35 nights with Zolpidem at doses of 5, 10, or 15 mg. The table is limited to data from doses up to and including 10 mg, the highest dose recommended for use. The table includes only adverse events occurring at an incidence of at least 1% for Zolpidem patients.

Table 2: Incidence of Treatment-Emergent Adverse Experiences in Placebo-Controlled Clinical Trials Lasting up to 35 Nights (percentage of patients reporting)

Body System Adverse Event*	Zolpidem (≤10 mg) (N=152)	Placebo (N=161)
Autonomic Nervous System		
Dry mouth	3	1
Body as a Whole		
Allergy	4	1

Back Pain	3	2
Influenza-like symptoms	2	-
Chest pain	1	-
Cardiovascular System		
Palpitation	2	-
Central and Peripheral Nervous System		
Drowsiness	8	5
Dizziness	5	1
Lethargy	3	1
Drugged feeling	3	-
Lightheadedness	2	1
Depression	2	1
Abnormal dreams	1	-
Amnesia	1	-
Sleep disorder	1	-
Gastrointestinal System		
Diarrhea	3	2
Abdominal pain	2	2
Constipation	2	1
Respiratory System		
Sinusitis	4	2
Pharyngitis	3	1
Skin and Appendages		
Rash	2	1

* Reactions reported by at least 1% of patients treated with Zolpidem Tartrate Tablets and at a greater frequency than placebo.

Dose Relationship for Adverse Reactions

There is evidence from dose comparison trials suggesting a dose relationship for many of the adverse reactions associated with Zolpidem use, particularly for certain CNS and gastrointestinal adverse events.

Adverse Event Incidence Across the Entire Preapproval Database

Zolpidem Tartrate Tablets was administered to 3,660 subjects in clinical trials throughout the U.S., Canada, and Europe. Treatment-emergent adverse events associated with clinical trial participation were recorded by clinical investigators using terminology of their own choosing. To provide a meaningful estimate of the proportion of individuals experiencing treatment-emergent adverse events, similar types of untoward events were grouped into a smaller number of standardized event categories and classified utilizing a modified World Health Organization (WHO) dictionary of preferred terms.

The frequencies presented, therefore, represent the proportions of the 3,660 individuals exposed to Zolpidem, at all doses, who experienced an event of the type cited on at least one occasion while receiving Zolpidem. All reported treatment-emergent adverse events are included, except those already listed in the table above of adverse events in placebo-controlled studies, those coding terms that are so general as to be uninformative, and those events where a drug cause was remote. It is important to

emphasize that, although the events reported did occur during treatment with Zolpidem Tartrate Tablets, they were not necessarily caused by it.

Adverse events are further classified within body system categories and enumerated in order of decreasing frequency using the following definitions: frequent adverse events are defined as those occurring in greater than 1/100 subjects; infrequent adverse events are those occurring in 1/100 to 1/1,000 patients; rare events are those occurring in less than 1/1,000 patients.

Autonomic nervous system: Infrequent: increased sweating, pallor, postural hypotension, syncope. Rare: abnormal accommodation, altered saliva, flushing, glaucoma, hypotension, impotence, increased saliva, tenesmus.

Body as a whole: Frequent: asthenia. Infrequent: edema, falling, fatigue, fever, malaise, trauma. Rare: allergic reaction, allergy aggravated, anaphylactic shock, face edema, hot flashes, increased ESR, pain, restless legs, rigors, tolerance increased, weight decrease.

Cardiovascular system: Infrequent: cerebrovascular disorder, hypertension, tachycardia. Rare: angina pectoris, arrhythmia, arteritis, circulatory failure, extrasystoles, hypertension aggravated, myocardial infarction, phlebitis, pulmonary embolism, pulmonary edema, varicose veins, ventricular tachycardia.

Central and peripheral nervous system: Frequent: ataxia, confusion, euphoria, headache, insomnia, vertigo. Infrequent: agitation, anxiety, decreased cognition, detached, difficulty concentrating, dysarthria, emotional lability, hallucination, hypoesthesia, illusion, leg cramps, migraine, nervousness, paresthesia, sleeping (after daytime dosing), speech disorder, stupor, tremor. Rare: abnormal gait, abnormal thinking, aggressive reaction, apathy, appetite increased, decreased libido, delusion, dementia, depersonalization, dysphasia, feeling strange, hypokinesia, hypotonia, hysteria, intoxicated feeling, manic reaction, neuralgia, neuritis, neuropathy, neurosis, panic attacks, paresis, personality disorder, somnambulism, suicide attempts, tetany, yawning.

Gastrointestinal system: Frequent: dyspepsia, hiccup, nausea. Infrequent: anorexia, constipation, dysphagia, flatulence, gastroenteritis, vomiting. Rare: enteritis, eructation, esophagospasm, gastritis, hemorrhoids, intestinal obstruction, rectal hemorrhage, tooth caries.

Hematologic and lymphatic system: Rare: anemia, hyperhemoglobinemia, leukopenia, lymphadenopathy, macrocytic anemia, purpura, thrombosis.

Immunologic system: Infrequent: infection. Rare: abscess herpes simplex herpes zoster, otitis externa, otitis media.

Liver and biliary system: Infrequent: abnormal hepatic function, increased SGPT. Rare: bilirubinemia, increased SGOT.

Metabolic and nutritional: Infrequent: hyperglycemia, thirst. Rare: gout, hypercholesteremia, hyperlipidemia, increased alkaline phosphatase, increased BUN, periorbital edema.

Musculoskeletal system: Frequent: arthralgia, myalgia. Infrequent: arthritis. Rare: arthrosis, muscle weakness, sciatica, tendinitis.

Reproductive system: Infrequent: menstrual disorder, vaginitis. Rare: breast

fibroadenosis, breast neoplasm, breast pain.

Respiratory system: Frequent: upper respiratory infection, lower respiratory infection. Infrequent: bronchitis, coughing, dyspnea, rhinitis. Rare: bronchospasm, respiratory depression, epistaxis, hypoxia, laryngitis, pneumonia.

Skin and appendages: Infrequent: pruritus. Rare: acne, bullous eruption, dermatitis, furunculosis, injection-site inflammation, photosensitivity reaction, urticaria.

Special senses: Frequent: diplopia, vision abnormal. Infrequent: eye irritation, eye pain, scleritis, taste perversion, tinnitus. Rare: conjunctivitis, corneal ulceration, lacrimation abnormal, parosmia, photopsia.

Urogenital system: Frequent: urinary tract infection. Infrequent: cystitis, urinary incontinence. Rare: acute renal failure, dysuria, micturition frequency, nocturia, polyuria, pyelonephritis, renal pain, urinary retention.

6.2 Postmarketing Experience

The following adverse reactions have been identified during postapproval use of Zolpidem Tartrate Tablets. Because these reactions are reported voluntarily from a population of uncertain size, it is not always possible to reliably estimate their frequency or establish a causal relationship to drug exposure.

Liver and biliary system: acute hepatocellular, cholestatic or mixed liver injury with or without jaundice (i.e., bilirubin $>2 \times$ ULN, alkaline phosphatase $\geq 2 \times$ ULN, transaminase $\geq 5 \times$ ULN).

Psychiatric disorders: delirium

7 DRUG INTERACTIONS

7.1 CNS-Active Drugs

CNS Depressants

Coadministration of Zolpidem with other CNS depressants increases the risk of CNS depression. Concomitant use of Zolpidem with these drugs may increase drowsiness and psychomotor impairment, including impaired driving ability [see *Warnings and Precautions (5.1, 5.2)*]. Zolpidem Tartrate was evaluated in healthy volunteers in single-dose interaction studies for several CNS drugs.

Alcohol

An additive adverse effect on psychomotor performance between alcohol and oral Zolpidem was demonstrated [see *Warnings and Precautions (5.1, 5.2)*]

Opioids

The concomitant use of Zolpidem Tartrate Tablets with opioids may increase the risk of respiratory depression. Limit dosage and duration of concomitant use of Zolpidem Tartrate Tablets and opioids [see *Dosage and Administration (2.3)*, *Warnings and Precautions (5.7)*]

Imipramine, Chlorpromazine

Imipramine in combination with Zolpidem produced no pharmacokinetic interaction other than a 20% decrease in peak levels of imipramine, but there was an additive effect of decreased alertness. Similarly, chlorpromazine in combination with Zolpidem produced no pharmacokinetic interaction, but there was an additive effect of decreased alertness and psychomotor performance [see *Clinical Pharmacology (12.3)*].

Sertraline

Concomitant administration of Zolpidem and sertraline increases exposure to Zolpidem [see *Clinical Pharmacology (12.3)*].

Fluoxetine

After multiple doses of Zolpidem Tartrate and fluoxetine an increase in the Zolpidem half-life (17%) was observed. There was no evidence of an additive effect in psychomotor performance [see *Clinical Pharmacology (12.3)*].

Haloperidol

A study involving haloperidol and Zolpidem revealed no effect of haloperidol on the pharmacokinetics or pharmacodynamics of Zolpidem. The lack of a drug interaction following single-dose administration does not predict the absence of an effect following chronic administration [see *Clinical Pharmacology (12.3)*].

7.2 Drugs that Affect Drug Metabolism via Cytochrome P450

Some compounds known to induce or inhibit CYP3A may affect exposure to Zolpidem. The effect of drugs that induce or inhibit other P450 enzymes on the exposure to Zolpidem is not known.

CYP3A4 Inducers

Rifampin

Rifampin, a CYP3A4 inducer, significantly reduced the exposure to and the pharmacodynamic effects of Zolpidem. Use of Rifampin in combination with Zolpidem may decrease the efficacy of Zolpidem and is not recommended [see *Clinical Pharmacology (12.3)*].

St. John's wort

Use of St. John's wort, a CYP3A4 inducer, in combination with Zolpidem may decrease blood levels of Zolpidem and is not recommended.

CYP3A4 Inhibitors

Ketoconazole

Ketoconazole, a potent CYP3A4 inhibitor, increased the exposure to and pharmacodynamic effects of Zolpidem. Consideration should be given to using a lower dose of Zolpidem when a potent CYP3A4 inhibitor and Zolpidem are given together [see *Clinical Pharmacology (12.3)*].

8 USE IN SPECIFIC POPULATIONS

8.1 Pregnancy

Risk Summary

Neonates born to mothers using Zolpidem late in the third trimester of pregnancy have been reported to experience symptoms of respiratory depression and sedation [see *Clinical Considerations and Data*]. Published data on the use of Zolpidem during pregnancy have not reported a clear association with Zolpidem and major birth defects [see *Data*]. Oral administration of Zolpidem to pregnant rats and rabbits did not indicate a risk for adverse effects on fetal development at clinically relevant doses [see *Data*].

The estimated background risk of major birth defects and miscarriage for the indicated populations are unknown. All pregnancies have a background risk of birth defect, loss, or other adverse outcomes. In the U.S. general population, the estimated background risk of major birth defects and miscarriage in clinically recognized pregnancies is 2%-4% and 15%-20%, respectively.

Clinical Considerations

Fetal/neonatal adverse reactions

Zolpidem crosses the placenta and may produce respiratory depression and sedation in neonates. Monitor neonates exposed to Zolpidem Tartrate Tablets during pregnancy and labor for signs of excess sedation, hypotonia, and respiratory depression and manage accordingly.

Data

Human data

Published data from observational studies, birth registries, and case reports on the use of Zolpidem during pregnancy do not report a clear association with Zolpidem and major birth defects.

There are limited postmarketing reports of severe to moderate cases of respiratory depression that occurred after birth in neonates whose mothers had taken Zolpidem during pregnancy. These cases required artificial ventilation or intratracheal intubation. The majority of neonates recovered within hours to a few weeks after birth once treated.

Zolpidem has been shown to cross the placenta.

Animal data

Oral administration of Zolpidem to pregnant rats during the period of organogenesis at 4, 20, and 100 mg base/kg/day, which are approximately 5, 25, and 120 times the maximum recommended human dose (MRHD) of 10 mg/day (8 mg Zolpidem base) based on mg/m^2 body surface area, caused delayed fetal development (incomplete fetal skeletal ossification) at maternally toxic (ataxia) doses 25 and 120 times the MRHD based on mg/m^2 body surface area.

Oral administration of Zolpidem to pregnant rabbits during the period of organogenesis at 1, 4, and 16 mg base/kg/day, which are approximately 2.5, 10, and 40 times the MRHD of 10 mg/day (8 mg Zolpidem base) based on mg/m^2 body surface area caused embryo-fetal death and delayed fetal development (incomplete fetal skeletal ossification) at a maternally toxic (decreased body weight gain) dose 40 times the MRHD based on mg/m^2 body surface area.

Oral administration of Zolpidem to pregnant rats from day 15 of gestation through

lactation at 4, 20, and 100 mg base/kg/day, which are approximately 5, 25, and 120 times the MRHD of 10 mg/day (8 mg Zolpidem base) based on mg/m² body surface area, delayed offspring growth and decreased survival at doses 25 and 120 times, respectively, the MRHD based on mg/m² body surface area.

8.2 Lactation

Risk Summary

Limited data from published literature report the presence of Zolpidem in human milk. There are reports of excess sedation in infants exposed to Zolpidem through breastmilk [see *Clinical Considerations*]. There is no information on the effects of Zolpidem on milk production. The developmental and health benefits of breastfeeding should be considered along with the mother's clinical need for Zolpidem Tartrate Tablets and any potential adverse effects on the breastfed infant from Zolpidem Tartrate Tablets or from the underlying maternal condition.

Clinical Considerations

Infants exposed to Zolpidem Tartrate Tablets through breastmilk should be monitored for excess sedation, hypotonia, and respiratory depression. A lactating woman may consider interrupting breastfeeding and pumping and discarding breast milk during treatment and for 23 hours (approximately 5 elimination half-lives) after Zolpidem Tartrate Tablets administration in order to minimize drug exposure to a breast fed infant.

8.4 Pediatric Use

Zolpidem Tartrate Tablets is not recommended for use in children. Safety and effectiveness of Zolpidem in pediatric patients below the age of 18 years have not been established.

In an 8-week study, in pediatric patients (aged 6-17 years) with insomnia associated with attention-deficit/hyperactivity disorder (ADHD) an oral solution of Zolpidem Tartrate dosed at 0.25 mg/kg at bedtime did not decrease sleep latency compared to placebo. Psychiatric and nervous system disorders comprised the most frequent (>5%) treatment emergent adverse reactions observed with Zolpidem versus placebo and included dizziness (23.5% vs 1.5%), headache (12.5% vs 9.2%), and hallucinations were reported in 7% of the pediatric patients who received Zolpidem; none of the pediatric patients who received placebo reported hallucinations [see *Warnings and Precautions* (5.5)]. Ten patients on Zolpidem (7.4%) discontinued treatment due to an adverse reaction.

8.5 Geriatric Use

A total of 154 patients in U.S. controlled clinical trials and 897 patients in non-U.S. clinical trials who received Zolpidem were ≥60 years of age. For a pool of U.S. patients receiving Zolpidem at doses of ≤10 mg or placebo, there were three adverse reactions occurring at an incidence of at least 3% for Zolpidem and for which the Zolpidem incidence was at least twice the placebo incidence (i.e., they could be considered drug related).

Adverse Event	Zolpidem	Placebo
Dizziness	3%	0%

Drowsiness	5%	2%
Diarrhea	3%	1%

A total of 30/1,959 (1.5%) non-U.S. patients receiving Zolpidem reported falls, including 28/30 (93%) who were ≥ 70 years of age. Of these 28 patients, 23 (82%) were receiving Zolpidem doses >10 mg. A total of 24/1,959 (1.2%) non-U.S. patients receiving Zolpidem reported confusion, including 18/24 (75%) who were ≥ 70 years of age. Of these 18 patients, 14 (78%) were receiving Zolpidem doses >10 mg.

The dose of Zolpidem Tartrate Tablets in elderly patients is 5 mg to minimize adverse effects related to impaired motor and/or cognitive performance and unusual sensitivity to sedative/hypnotic drugs [see *Warnings and Precautions (5.2)*].

8.6 Gender Difference in Pharmacokinetics

Women clear Zolpidem Tartrate from the body at a lower rate than men. C_{max} and AUC parameters of Zolpidem were approximately 45% higher at the same dose in female subjects compared with male subjects. Given the higher blood levels of Zolpidem Tartrate in women compared to men at a given dose, the recommended initial dose of Zolpidem Tartrate Tablets for adult women is 5 mg, and the recommended dose for adult men is 5 or 10 mg.

In geriatric patients, clearance of Zolpidem is similar in men and women. The recommended dose of Zolpidem Tartrate Tablets in geriatric patients is 5 mg regardless of gender.

8.7 Hepatic Impairment

The recommended dose of Zolpidem Tartrate Tablets in patients with mild to moderate hepatic impairment is 5 mg once daily immediately before bedtime. Avoid Zolpidem Tartrate Tablets use in patients with severe hepatic impairment as it may contribute to encephalopathy [see *Dosage and Administration (2.2)*, *Warnings and Precautions (5.8)*, *Clinical Pharmacology (12.3)*].

9 DRUG ABUSE AND DEPENDENCE

9.1 Controlled Substance

Zolpidem Tartrate is classified as a Schedule IV controlled substance by federal regulation.

9.2 Abuse

Abuse and addiction are separate and distinct from physical dependence and tolerance. Abuse is characterized by misuse of the drug for non-medical purposes, often in combination with other psychoactive substances. Tolerance is a state of adaptation in which exposure to a drug induces changes that result in a diminution of one or more of the drug effects over time. Tolerance may occur to both desired and undesired effects of drugs and may develop at different rates for different effects.

Addiction is a primary, chronic, neurobiological disease with genetic, psychosocial, and environmental factors influencing its development and manifestations. It is characterized

by behaviors that include one or more of the following: impaired control over drug use, compulsive use, continued use despite harm, and craving. Drug addiction is a treatable disease, using a multidisciplinary approach, but relapse is common.

Studies of abuse potential in former drug abusers found that the effects of single doses of Zolpidem Tartrate 40 mg were similar, but not identical, to diazepam 20 mg, while Zolpidem Tartrate 10 mg was difficult to distinguish from placebo.

Because persons with a history of addiction to, or abuse of, drugs or alcohol are at increased risk for misuse, abuse and addiction of Zolpidem, they should be monitored carefully when receiving Zolpidem or any other hypnotic.

9.3 Dependence

Use of Zolpidem Tartrate Tablets may lead to the development of physical and/or psychological dependence. The risk of dependence increases with dose and duration of treatment. The risk of abuse and dependence is also greater in patients with a history of alcohol or drug abuse. Zolpidem Tartrate Tablets should be used with extreme caution in patients with current or past alcohol or drug abuse.

Physical dependence is a state of adaptation that is manifested by a specific withdrawal syndrome that can be produced by abrupt cessation, rapid dose reduction, decreasing blood level of the drug, and/or administration of an antagonist.

Sedative/hypnotics have produced withdrawal signs and symptoms following abrupt discontinuation. These reported symptoms range from mild dysphoria and insomnia to a withdrawal syndrome that may include abdominal and muscle cramps, vomiting, sweating, tremors, convulsions, and delirium.

The following adverse events, which are considered to meet the DSM-III-R criteria for uncomplicated sedative/hypnotic withdrawal, were reported during clinical trials with Zolpidem Tartrate Tablets following placebo substitution occurring within 48 hours following last zolpidem treatment: fatigue, nausea, flushing, lightheadedness, uncontrolled crying, emesis, stomach cramps, panic attack, nervousness, and abdominal discomfort. These reported adverse events occurred at an incidence of 1% or less. However, available data cannot provide a reliable estimate of the incidence, if any, of dependence during treatment at recommended doses. There have been postmarketing reports of abuse, dependence and withdrawal with zolpidem.

10 OVERDOSAGE

10.1 Signs and Symptoms

In postmarketing experience of overdose with Zolpidem Tartrate alone, or in combination with CNS-depressant agents, impairment of consciousness ranging from somnolence to coma, cardiovascular and/or respiratory compromise, and fatal outcomes have been reported.

10.2 Recommended Treatment

General symptomatic and supportive measures should be used along with immediate gastric lavage where appropriate. Intravenous fluids should be administered as needed. Zolpidem's sedative hypnotic effect was shown to be reduced by flumazenil and

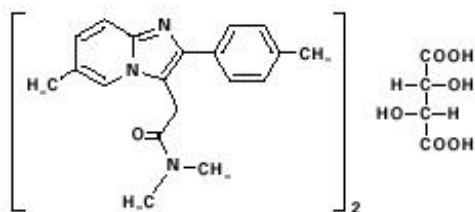
therefore may be useful; however, flumazenil administration may contribute to the appearance of neurological symptoms (convulsions). As in all cases of drug overdose, respiration, pulse, blood pressure, and other appropriate signs should be monitored and general supportive measures employed. Hypotension and CNS depression should be monitored and treated by appropriate medical intervention. Sedating drugs should be withheld following Zolpidem overdosage, even if excitation occurs. The value of dialysis in the treatment of overdosage has not been determined, although hemodialysis studies in patients with renal failure receiving therapeutic doses have demonstrated that Zolpidem is not dialyzable.

As with the management of all overdosage, the possibility of multiple drug ingestion should be considered. The physician may wish to consider contacting a poison control center for up-to-date information on the management of hypnotic drug product overdosage.

11 DESCRIPTION

Zolpidem Tartrate Tablets, USP contains Zolpidem tartrate, a gamma-aminobutyric acid (GABA) A receptor positive modulator of the imidazopyridine class. Zolpidem Tartrate Tablets, USP is available in 5 mg and 10 mg strength tablets for oral administration.

Chemically, Zolpidem is N, N,6-trimethyl-2-p-tolylimidazo[1,2-a] pyridine-3-acetamide L-(+)-tartrate (2:1). It has the following structure:



Zolpidem Tartrate is a white to off-white crystalline powder that is sparingly soluble in water, alcohol, and propylene glycol. It has a molecular weight of 764.88.

Each Zolpidem Tartrate Tablet, USP includes the following inactive ingredients: lactose anhydrous, sodium starch glycolate, colloidal silicon dioxide, microcrystalline cellulose, magnesium stearate. The 10 mg tablets also contain Opadry II (white) and the 5 mg tablets contain Opadry II (pink). Opadry II (white) contains hypromellose, polyethylene glycol, polydextrose, titanium dioxide, and triacetin. Opadry II (pink) contains hypromellose, FD&C Red no. 40 aluminum lake, FD&C Blue no. 2 aluminum lake, FD&C Yellow no. 6 aluminum lake, polyethylene glycol, polydextrose, titanium dioxide, and triacetin.

Meets USP Dissolution Test 3.

12 CLINICAL PHARMACOLOGY

12.1 Mechanism of Action

Zolpidem is a GABA A receptor positive modulator presumed to exert its therapeutic

effects in the short-term treatment of insomnia through binding to the benzodiazepine site of $\alpha 1$ subunit containing GABA A receptors, increasing the frequency of chloride channel opening resulting in the inhibition of neuronal excitation.

12.2 Pharmacodynamics

Zolpidem binds to GABA A receptors with greater affinity for $\alpha 1$ subunit relative to $\alpha 2$ and $\alpha 3$ subunit containing receptors. Zolpidem has no appreciable binding affinity for $\alpha 5$ subunit containing GABA A receptors. This binding profile may explain the relative absence of myorelaxant effects in animal studies. Zolpidem has no appreciable binding affinity for dopaminergic D2, serotonergic 5HT₂, adrenergic, histaminergic or muscarinic receptors.

12.3 Pharmacokinetics

The pharmacokinetic profile of Zolpidem Tartrate Tablets is characterized by rapid absorption from the gastrointestinal tract and a short elimination half-life ($T_{1/2}$) in healthy subjects.

In a single-dose crossover study in 45 healthy subjects administered 5 and 10 mg Zolpidem Tartrate Tablets, the mean peak concentrations (C_{max}) were 59 (range: 29 to 113) and 121 (range: 58 to 272) ng/mL, respectively, occurring at a mean time (T_{max}) of 1.6 hours for both. The mean Zolpidem Tartrate Tablets elimination half-life was 2.6 (range: 1.4 to 4.5) and 2.5 (range: 1.4 to 3.8) hours, for the 5 and 10 mg tablets, respectively. Zolpidem Tartrate Tablets is converted to inactive metabolites that are eliminated primarily by renal excretion. Zolpidem Tartrate Tablets demonstrated linear kinetics in the dose range of 5 to 20 mg. Total protein binding was found to be $92.5 \pm 0.1\%$ and remained constant, independent of concentration between 40 and 790 ng/mL. Zolpidem did not accumulate in young adults following nightly dosing with 20 mg Zolpidem Tartrate Tablets for 2 weeks.

A food-effect study in 30 healthy male subjects compared the pharmacokinetics of Zolpidem Tartrate Tablets 10 mg when administered while fasting or 20 minutes after a meal. Results demonstrated that with food, mean AUC and C_{max} were decreased by 15% and 25%, respectively, while mean T_{max} was prolonged by 60% (from 1.4 to 2.2 hr). The half-life remained unchanged. These results suggest that, for faster sleep onset, Zolpidem Tartrate Tablets should not be administered with or immediately after a meal.

Special Populations

Elderly

In the elderly, the dose for Zolpidem Tartrate Tablets should be 5 mg [see *Warnings and Precautions (5), Dosage and Administration (2)*]. This recommendation is based on several studies in which the mean C_{max} , $T_{1/2}$, and AUC were significantly increased when compared to results in young adults. In one study of eight elderly subjects (>70 years), the means for C_{max} , $T_{1/2}$, and AUC significantly increased by 50% (255 vs 384 ng/mL), 32% (2.2 vs 2.9 hr), and 64% (955 vs 1,562 ng·hr/mL), respectively, as compared to younger adults (20 to 40 years) following a single 20 mg oral dose. Zolpidem Tartrate Tablets did not accumulate in elderly subjects following nightly oral dosing of 10 mg for 1 week.

Hepatic impairment

The pharmacokinetics of Zolpidem Tartrate Tablets in eight patients with chronic hepatic insufficiency was compared to results in healthy subjects. Following a single 20 mg oral ZOLPIDEM Tartrate dose, mean C_{max} and AUC were found to be two times (250 vs 499 ng/mL) and five times (788 vs 4,203 ng·hr/mL) higher, respectively, in hepatically compromised patients. T_{max} did not change. The mean half-life in cirrhotic patients of 9.9 hr (range: 4.1 to 25.8 hr) was greater than that observed in normal subjects of 2.2 hr (range: 1.6 to 2.4 hr) [see *Dosage and Administration (2.2)*, *Warnings and Precautions (5.8)*, *Use in Specific Populations (8.7)*].

Renal impairment

The pharmacokinetics of Zolpidem Tartrate was studied in 11 patients with end-stage renal failure (mean $Cl_{Cr} = 6.5 \pm 1.5$ mL/min) undergoing hemodialysis three times a week, who were dosed with Zolpidem Tartrate 10 mg orally each day for 14 or 21 days. No statistically significant differences were observed for C_{max} , T_{max} , half-life, and AUC between the first and last day of drug administration when baseline concentration adjustments were made. Zolpidem was not hemodialyzable. No accumulation of unchanged drug appeared after 14 or 21 days. Zolpidem pharmacokinetics was not significantly different in renally impaired patients. No dosage adjustment is necessary in patients with compromised renal function.

Drug Interactions

CNS-depressants

Coadministration of Zolpidem with other CNS depressants increases the risk of CNS depression [see *Warnings and Precautions (5.2)*]. Zolpidem Tartrate was evaluated in healthy volunteers in single-dose interaction studies for several CNS drugs. Imipramine in combination with Zolpidem produced no pharmacokinetic interaction other than a 20% decrease in peak levels of imipramine, but there was an additive effect of decreased alertness. Similarly, chlorpromazine in combination with Zolpidem produced no pharmacokinetic interaction, but there was an additive effect of decreased alertness and psychomotor performance.

A study involving haloperidol and Zolpidem revealed no effect of haloperidol on the pharmacokinetics or pharmacodynamics of Zolpidem. The lack of a drug interaction following single-dose administration does not predict the absence of an effect following chronic administration.

An additive adverse effect on psychomotor performance between alcohol and oral Zolpidem was demonstrated [see *Warnings and Precautions (5.2)*].

Following five consecutive nightly doses at bedtime of oral Zolpidem Tartrate 10 mg in the presence of sertraline 50 mg (17 consecutive daily doses, at 7:00 am, in healthy female volunteers), Zolpidem C_{max} was significantly higher (43%) and T_{max} was significantly decreased (-53%). Pharmacokinetics of sertraline and N-desmethylsertraline were unaffected by Zolpidem.

A single-dose interaction study with Zolpidem Tartrate 10 mg and fluoxetine 20 mg at steady-state levels in male volunteers did not demonstrate any clinically significant pharmacokinetic or pharmacodynamic interactions. When multiple doses of Zolpidem and fluoxetine were given at steady state and the concentrations evaluated in healthy females, an increase in the Zolpidem half-life (17%) was observed. There was no evidence of an additive effect in psychomotor performance.

Drugs that affect drug metabolism via cytochrome P450

Some compounds known to inhibit CYP3A may increase exposure to Zolpidem. The effect of inhibitors of other P450 enzymes on the pharmacokinetics of Zolpidem is unknown.

A single-dose interaction study with Zolpidem Tartrate 10 mg and itraconazole 200 mg at steady-state levels in male volunteers resulted in a 34% increase in $AUC_{0-\infty}$ of Zolpidem tartrate. There were no pharmacodynamic effects of Zolpidem detected on subjective drowsiness, postural sway, or psychomotor performance.

A single-dose interaction study with Zolpidem Tartrate 10 mg and rifampin 600 mg at steady-state levels in female subjects showed significant reductions of the AUC (-73%), C_{max} (-58%), and $T_{1/2}$ (-36 %) of Zolpidem together with significant reductions in the pharmacodynamic effects of Zolpidem tartrate. Rifampin, a CYP3A4 inducer, significantly reduced the exposure to and the pharmacodynamic effects of Zolpidem [see *Drug Interactions (7.2)*].

Similarly, St. John's wort, a CYP3A4 inducer, may also decrease the blood levels of Zolpidem.

A single-dose interaction study with Zolpidem Tartrate 5 mg and ketoconazole, a potent CYP3A4 inhibitor, given as 200 mg twice daily for 2 days increased C_{max} of Zolpidem (30%) and the total AUC of Zolpidem (70%) compared to Zolpidem alone and prolonged the elimination half-life (30 %) along with an increase in the pharmacodynamic effects of Zolpidem [see *Drug Interactions (7.2)*].

Additionally, fluvoxamine (a strong inhibitor of CYP1A2 and a weak inhibitor of CYP3A4 and CYP2C9) and ciprofloxacin (a strong inhibitor of CYP1A2 and a moderate inhibitor of CYP3A4) are also likely to inhibit Zolpidem's metabolic pathways, potentially leading to an increase in Zolpidem exposure.

Other drugs with no interactions with Zolpidem

A study involving cimetidine/Zolpidem Tartrate and ranitidine/Zolpidem Tartrate combinations revealed no effect of either drug on the pharmacokinetics or pharmacodynamics of Zolpidem.

Zolpidem Tartrate had no effect on digoxin pharmacokinetics and did not affect prothrombin time when given with warfarin in healthy subjects.

13 NONCLINICAL TOXICOLOGY

13.1 Carcinogenesis, Mutagenesis, Impairment of Fertility

Carcinogenesis

Zolpidem was administered to mice and rats for 2 years at oral doses of 4, 18, and 80 mg base/kg/day. In mice, these doses are approximately 2.5, 10, and 50 times the MRHD of 10 mg/day (8 mg Zolpidem base) based on mg/m^2 body surface area and in rats, these doses are approximately 5, 20, and 100 times the MRHD based on mg/m^2 body surface area. No evidence of carcinogenic potential was observed in mice. In rats, renal tumors (lipoma, liposarcoma) were seen at the mid and high doses.

Mutagenesis

Zolpidem was negative in in vitro (bacterial reverse mutation, mouse lymphoma, and chromosomal aberration) and in vivo (mouse micronucleus) genetic toxicology assays.

Impairment of Fertility

Zolpidem was administered to rats at 4, 20, and 100 mg base/kg/day, which are approximately 5, 25, and 120 times the MRHD of 10 mg/day (8 mg Zolpidem base) based on mg/m² body surface area, prior to and during mating, and continuing in females through postpartum day 25. Zolpidem caused irregular estrus cycles and prolonged precoital intervals at the highest dose tested, which is approximately 120 times the MRHD based on mg/m² body surface area. The NOAEL for these effects is 25 times the MRHD based on a mg/m² body surface area. There was no impairment of fertility at any dose tested.

14 CLINICAL STUDIES

14.1 Transient Insomnia

Normal adults experiencing transient insomnia (n=462) during the first night in a sleep laboratory were evaluated in a double-blind, parallel group, single-night trial comparing two doses of Zolpidem (7.5 and 10 mg) and placebo. Both Zolpidem doses were superior to placebo on objective (polysomnographic) measures of sleep latency, sleep duration, and number of awakenings.

Normal elderly adults (mean age 68) experiencing transient insomnia (n=35) during the first two nights in a sleep laboratory were evaluated in a double-blind, crossover, 2-night trial comparing four doses of Zolpidem (5, 10, 15 and 20 mg) and placebo. All Zolpidem doses were superior to placebo on the two primary PSG parameters (sleep latency and efficiency) and all four subjective outcome measures (sleep duration, sleep latency, number of awakenings, and sleep quality).

14.2 Chronic Insomnia

Zolpidem was evaluated in two controlled studies for the treatment of patients with chronic insomnia (most closely resembling primary insomnia, as defined in the APA Diagnostic and Statistical Manual of Mental Disorders, DSM-IV™). Adult outpatients with chronic insomnia (n=75) were evaluated in a double-blind, parallel group, 5-week trial comparing two doses of Zolpidem Tartrate and placebo. On objective (polysomnographic) measures of sleep latency and sleep efficiency, Zolpidem 10 mg was superior to placebo on sleep latency for the first 4 weeks and on sleep efficiency for weeks 2 and 4. Zolpidem was comparable to placebo on number of awakenings at both doses studied.

Adult outpatients (n=141) with chronic insomnia were also evaluated, in a double-blind, parallel group, 4-week trial comparing two doses of Zolpidem and placebo. Zolpidem 10 mg was superior to placebo on a subjective measure of sleep latency for all 4 weeks, and on subjective measures of total sleep time, number of awakenings, and sleep quality for the first treatment week.

Increased wakefulness during the last third of the night as measured by polysomnography has not been observed in clinical trials with Zolpidem Tartrate Tablets.

14.3 Studies Pertinent to Safety Concerns for Sedative/Hypnotic Drugs

Next-Day Residual Effects

Next-day residual effects of Zolpidem Tartrate Tablets was evaluated in seven studies involving normal subjects. In three studies in adults (including one study in a phase advance model of transient insomnia) and in one study in elderly subjects, a small but statistically significant decrease in performance was observed in the Digit Symbol Substitution Test (DSST) when compared to placebo. Studies of Zolpidem Tartrate Tablets in non-elderly patients with insomnia did not detect evidence of next-day residual effects using the DSST, the Multiple Sleep Latency Test (MSLT), and patient ratings of alertness.

Rebound Effects

There was no objective (polysomnographic) evidence of rebound insomnia at recommended doses seen in studies evaluating sleep on the nights following discontinuation of Zolpidem Tartrate Tablets. There was subjective evidence of impaired sleep in the elderly on the first post-treatment night at doses above the recommended elderly dose of 5 mg.

Memory Impairment

Controlled studies in adults utilizing objective measures of memory yielded no consistent evidence of next-day memory impairment following the administration of Zolpidem Tartrate Tablets. However, in one study involving Zolpidem doses of 10 and 20 mg, there was a significant decrease in next-morning recall of information presented to subjects during peak drug effect (90 minutes post dose), i.e., these subjects experienced anterograde amnesia. There was also subjective evidence from adverse event data for anterograde amnesia occurring in association with the administration of Zolpidem Tartrate Tablets, predominantly at doses above 10 mg.

Effects on Sleep Stages

In studies that measured the percentage of sleep time spent in each sleep stage, Zolpidem Tartrate Tablets has generally been shown to preserve sleep stages. Sleep time spent in stages 3 and 4 (deep sleep) was found comparable to placebo with only inconsistent, minor changes in REM (paradoxical) sleep at the recommended dose.

16 HOW SUPPLIED/STORAGE AND HANDLING

Zolpidem Tartrate Tablets 10 mg is white film coated, round biconvex tablets, debossed "IT 118" on one side.

- NDC 72162-1983-1: 100 Tablets in a BOTTLE

Store at controlled room temperature 20°C-25°C (68°F-77°F).

Repackaged/Relabeled by:
Bryant Ranch Prepack, Inc.
Burbank, CA 91504

17 PATIENT COUNSELING INFORMATION

Advise the patient to read the FDA-approved patient labeling (Medication Guide).

Inform patients and their families about the benefits and risks of treatment with Zolpidem Tartrate Tablets. Inform patients of the availability of a Medication Guide and instruct them to read the Medication Guide prior to initiating treatment with Zolpidem Tartrate Tablets and with each prescription refill. Review the Zolpidem Tartrate Tablets Medication Guide with every patient prior to initiation of treatment. Instruct patients or caregivers that Zolpidem Tartrate Tablets should be taken only as prescribed.

Complex Sleep Behaviors

Instruct patients and their families that Zolpidem Tartrate Tablets may cause complex sleep behaviors, including sleep-walking, sleep-driving, preparing and eating food, making phone calls, or having sex while not being fully awake. Serious injuries and death have occurred during complex sleep behavior episodes. Tell patients to discontinue Zolpidem Tartrate Tablets and notify their healthcare provider immediately if they develop any of these symptoms [*see Boxed Warning, Warnings and Precautions (5.1)*]

CNS-Depressant Effects and Next-Day Impairment

Tell patients that Zolpidem Tartrate Tablets have the potential to cause next-day impairment, and that this risk is increased if dosing instructions are not carefully followed. Tell patients to wait for at least 8 hours after dosing before driving or engaging in other activities requiring full mental alertness. Inform patients that impairment can be present despite feeling fully awake. Advise patients that increased drowsiness and decreased consciousness may increase the risk of falls in some patients. [*see Warnings and Precautions (5.2)*]

Severe Anaphylactic and Anaphylactoid Reactions

Inform patients that severe anaphylactic and anaphylactoid reactions have occurred with Zolpidem. Describe the signs/symptoms of these reactions and advise patients to seek medical attention immediately if any of them occur. [*see Warnings and Precautions (5.4)*]

Suicide

Tell patients to immediately report any suicidal thoughts.

Alcohol and other Drugs

Ask patients about alcohol consumption, medicines they are taking, and drugs they may be taking without a prescription. Advise patients not to use Zolpidem Tartrate Tablets if they drank alcohol that evening or before bed.

Concomitant Use with Opioids

Inform patients and caregivers that potentially serious additive effects may occur if Zolpidem Tartrate Tablets is used with opioids and not to use such drugs concomitantly unless supervised by a healthcare provider [*see Warnings and Precautions (5.2, 5.7), Drug Interactions (7.1)*].

Tolerance, Abuse, and Dependence

Tell patients not to increase the dose of Zolpidem Tartrate Tablets on their own, and to inform you if they believe the drug "does not work."

Administration Instructions

Patients should be counseled to take Zolpidem Tartrate Tablets right before they get into bed and only when they are able to stay in bed a full night (7-8 hours) before being active again. Zolpidem Tartrate Tablets should not be taken with or immediately after a meal. Advise patients NOT to take Zolpidem Tartrate Tablets if they drank alcohol that evening.

Pregnancy

Advise patients to notify their healthcare provider if they become pregnant or intend to become pregnant during treatment with Zolpidem Tartrate Tablets. Advise patients that use of Zolpidem Tartrate Tablets late in the third trimester may cause respiratory depression and sedation in neonates. Advise mothers who used Zolpidem Tartrate Tablets during the late third trimester of pregnancy to monitor neonates for signs of sleepiness (more than usual), breathing difficulties, or limpness [*see Use in Specific Populations (8.1)*].

Lactation

Advise breastfeeding mothers using Zolpidem Tartrate Tablets to monitor infants for increased sleepiness, breathing difficulties, or limpness. Instruct breastfeeding mothers to seek immediate medical care if they notice these signs. A lactating woman may consider pumping and discarding breastmilk during treatment and for 23 hours after Zolpidem Tartrate Tablets administration to minimize drug exposure to a breastfed infant [*see Use in Specific Populations (8.2)*].

Manufactured for:

The ACME Laboratories Ltd.

Dhulivita, Dhamrai,

Dhaka, 1350

Bangladesh

Distributed by:

ACI Healthcare USA, Inc.

10100 W. Sample Road,

Suite 406 Coral Springs, FL 3306

Revised: 6/2023

MEDICATION GUIDE

Zolpidem (zol' pi dem) Tartrate

Tablets, for oral use, C-IV

What is the most important information I should know about Zolpidem Tartrate Tablets?

Zolpidem tartrate tablets may cause serious side effects, including:

- **Complex sleep behaviors.** After taking Zolpidem tartrate tablets, you may get up out of bed while not being fully awake and do an activity that you do not know you

are doing. The next morning, you may not remember that you did anything during the night. These activities may happen with Zolpidem tartrate tablets whether or not you drink alcohol or take other medicines that make you sleepy. Some of these complex sleep behaviors have caused serious injury and death. People taking Zolpidem tartrate tablets have reported:

- sleep-walking
- sleep-driving
- making and eating food
- talking on the phone
- having sex

Stop taking Zolpidem tartrate tablets and call your healthcare provider right away if you find out that you have done any of the above activities after taking Zolpidem tartrate tablets.

What is Zolpidem Tartrate Tablet?

Zolpidem Tartrate Tablets is a prescription sleep medicine used for the short-term treatment of adults who have trouble falling asleep (insomnia).

- It is not known if Zolpidem tartrate tablets is safe and effective in children under the age of 18 years. Zolpidem tartrate tablets is not recommended for use in children under the age of 18 years.
- **Zolpidem tartrate tablets is a federally controlled substance (C-IV) because it can be abused or lead to dependence .**

Keep Zolpidem tartrate tablets in a safe place to protect it from theft. Never give your Zolpidem tartrate tablets to anyone else because it may cause death or harm them. Selling or giving away this medicine is against the law.

Do not take Zolpidem tartrate tablets if you:

- have had complex sleep behaviors that happened after taking Zolpidem tartrate tablets in the past. See "**What is the most important information I should know about Zolpidem tartrate tablets?**"
- are allergic to zolpidem or any of the ingredients in Zolpidem tartrate tablets. See the end of this Medication Guide for a complete list of ingredients in Zolpidem tartrate tablets.

Before taking Zolpidem tartrate tablets, tell your healthcare provider about all of your medical conditions, including if you:

- have a history of depression, mental illness, or suicidal thoughts or actions
- have a history of drug or alcohol abuse or addiction
- have kidney or liver disease
- have a lung disease or breathing problems
- have sleep apnea
- have myasthenia gravis
- are pregnant or plan to become pregnant. Taking Zolpidem tartrate tablets in the third trimester of pregnancy may harm your unborn baby.

- Tell your healthcare provider if you become pregnant or plan to become

pregnant during treatment with Zolpidem tartrate tablets.

○ Babies born to mothers who take Zolpidem tartrate tablets during the third trimester of pregnancy may have symptoms of breathing problems and sedation (such as sleepiness or low muscle tone).

- are breastfeeding or plan to breastfeed. Zolpidem tartrate tablets passes into your breast milk and may harm your baby. Talk to your healthcare provider about the best way to feed your baby during treatment with Zolpidem tartrate tablets.

Tell your healthcare provider about all of the medicines you take, including prescription and over-the-counter medicines, vitamins, and herbal supplements. Zolpidem tartrate tablets and other medicines can interact with each other causing serious side effects. Zolpidem tartrate tablets may affect the way other medicines work, and other medicines may affect how Zolpidem tartrate tablets works.

Especially tell your healthcare provider if you:

- take benzodiazepines
- take opioids as it may increase the risk of breathing problems (respiratory depression)
- take tricyclic antidepressants
- take other medicines that can make you sleepy or affect your breathing (including other zolpidem medicines)
- drink alcohol

You can ask your pharmacist for a list of medicines that interact with Zolpidem tartrate tablets.

Know the medicines you take. Keep a list of them to show your healthcare provider and pharmacist when you get a new medicine.

How should I take Zolpidem tartrate tablets?

- **Take Zolpidem tartrate tablets exactly as prescribed.** Do not change your dose on your own. Tell your healthcare provider if you think Zolpidem tartrate tablets is not working for you.
- **Zolpidem tartrate tablets is for short-term use only.** Treatment with Zolpidem tartrate tablets should be as short as possible because the risk of dependence increases the longer you are being treated.
- Take **1** Zolpidem tartrate tablet at night right before bedtime.
- **Do not take Zolpidem tartrate tablets if you are not able to stay in bed a full night (7 to 8 hours) before you must be active again.**
- You should not take Zolpidem tartrate tablets with or right after a meal. Zolpidem tartrate tablets may help you fall asleep faster if you take it on an empty stomach.
- **Do not** take Zolpidem tartrate tablets if you drank alcohol that evening or before bed.
- Call your healthcare provider if your sleep problems get worse or do not get better within 7 to 10 days. This may mean that there is another condition causing your sleep problems.
- If you take too much Zolpidem tartrate tablets, call your healthcare provider or go to the nearest hospital emergency room right away.

What are the possible side effects of Zolpidem Tartrate Tablets?

Zolpidem Tartrate Tablets may cause serious side effects, including:

- See "**What is the most important information I should know about Zolpidem Tartrate Tablets?**"
- **Zolpidem Tartrate Tablets can make you sleepy or dizzy and can slow your thinking and motor skills.** Because Zolpidem tartrate tablets can make you sleepy or dizzy you are at a higher risk for falls.

○ Do not drive, operate heavy machinery, or do other dangerous activities until you know how Zolpidem tartrate tablets affects you.

○ Do not drink alcohol or take opioids or other medicines that may make you sleepy or dizzy while taking Zolpidem tartrate tablets without first talking to your healthcare provider. When taken with alcohol or other medicines that cause sleepiness or dizziness, Zolpidem Tartrate Tablets may make your sleepiness or dizziness much worse.

- **Severe allergic reactions.** Symptoms include swelling of the tongue or throat, trouble breathing, and nausea and vomiting. Get emergency medical help right away if you develop any of these symptoms during treatment with Zolpidem tartrate tablets.
- **Abnormal thoughts and behavior.** Symptoms include more outgoing or aggressive behavior than normal, confusion (delirium), acting strangely, agitation, hallucinations, worsening of depression, and suicidal thoughts or actions.
- **Risk of suicide and worsening of depression.** Worsening of depression, including suicidal thoughts and actions can happen during treatment with medicines like Zolpidem tartrate tablets. Call your healthcare provider right away if you develop any thoughts of suicide, dying, or worsening depression during treatment with Zolpidem tartrate tablets.
- **Breathing problems.** See "**Before taking Zolpidem tartrate tablets, tell your healthcare provider about all of your medical conditions, including if you:**" Call your healthcare provider or get emergency medical help right away if you develop breathing problems during treatment with Zolpidem tartrate tablets.
- **Problems with your nervous system caused by severe liver disease (hepatic encephalopathy).**
- **Withdrawal symptoms.** You may have withdrawal symptoms if you stop taking Zolpidem tartrate tablets suddenly. Withdrawal symptoms can be serious and include stomach and muscle cramps, vomiting, sweating, shakiness, seizures, and confusion (delirium). Talk to your healthcare provider about slowly stopping Zolpidem tartrate tablets to avoid withdrawal symptoms.

The most common side effects of Zolpidem tartrate tablets include sleepiness, dizziness, diarrhea, and grogginess or feeling like you have been drugged.

These are not all the side effects of Zolpidem tartrate tablets.

Call your doctor for medical advice about side effects. You may report side effects to FDA at 1-800-FDA-1088.

How should I store Zolpidem tartrate tablets?

- Store Zolpidem tartrate tablets at room temperature between 68°F to 77°F (20°C to 25°C).

Keep Zolpidem tartrate tablets and all medicines out of reach of children.

General Information about the safe and effective use of Zolpidem tartrate tablets

Medicines are sometimes prescribed for purposes other than those listed in a Medication Guide. Do not use Zolpidem tartrate tablets for a condition for which it was not prescribed. Do not give Zolpidem tartrate tablets to other people, even if they have the same symptoms that you have. It may harm them. You can ask your healthcare provider or pharmacist for information about Zolpidem tartrate tablets that is written for healthcare professionals.

What are the ingredients in Zolpidem tartrate tablets?

Active Ingredient: Zolpidem tartrate

Inactive Ingredients: lactose anhydrous, sodium starch glycolate, colloidal silicon dioxide, microcrystalline cellulose, magnesium stearate. The 10 mg tablets also contain Opadry II (white) and the 5 mg tablets contain Opadry II (pink). Opadry II (white) contains hypromellose, polyethylene glycol, polydextrose, titanium dioxide, and triacetin. Opadry II (pink) contains hypromellose, FD&C Red no. 40 aluminum lake, FD&C Blue no. 2 aluminum lake, FD&C Yellow no. 6 aluminum lake, polyethylene glycol, polydextrose, titanium dioxide, and triacetin.

Manufactured for:

The ACME Laboratories Ltd.

Dhulivita, Dhamrai,

Dhaka, 1350

Bangladesh

Distributed by:

ACI Healthcare USA, Inc.

10100 W. Sample Road,

Suite 406 Coral Springs, FL 33065

Revised: 6/2023

Zolpidem Tartrate Tablets 10 mg



Each tablet contains: Zolpidem Tartrate, USP 10 mg.

NDC 72162-1983-1

Keep out of reach of children.

Zolpidem Tartrate Tablets



Store at 20° to 25°C (68° to 77°F) [See USP Controlled Room Temperature].

10 mg

Dispense in a tight, light-resistant container.

Dispense Medication Guide to each patient:
<https://www.accessdata.fda.gov/scripts/cder/daf/index.cfm?event=medguide.page>



Relabeled by:
Bryant Ranch Prepack, Inc.
Burbank, CA 91504 USA

Rx only

100 Tablets

Manufactured by:
InvaTech Pharma Solutions,
LLC

7216219831



ZOLPIDEM

zolpidem tartrate tablet

Product Information

Product Type	HUMAN PRESCRIPTION DRUG	Item Code (Source)	NDC:72162-1983(NDC:71093-156)
Route of Administration	ORAL	DEA Schedule	CIV

Active Ingredient/Active Moiety

Ingredient Name	Basis of Strength	Strength
ZOLPIDEM TARTRATE (UNII: WY6W63843K) (ZOLPIDEM - UNII: 7K383OQ123)	ZOLPIDEM TARTRATE	10 mg

Inactive Ingredients

Ingredient Name	Strength
ANHYDROUS LACTOSE (UNII: 3SY5LH9PMK)	
SILICON DIOXIDE (UNII: ETJ7Z6XBU4)	
SODIUM STARCH GLYCOLATE TYPE A POTATO (UNII: 5856J3G2A2)	
MICROCRYSTALLINE CELLULOSE 102 (UNII: PNR0YF693Y)	
MAGNESIUM STEARATE (UNII: 70097M6I30)	
HYPROMELLOSE, UNSPECIFIED (UNII: 3NXW29V3WO)	
POLYDEXTROSE (UNII: VH2XOU12IE)	
TITANIUM DIOXIDE (UNII: 15FIX9V2JP)	
TRIACETIN (UNII: XHX3C3X673)	
POLYETHYLENE GLYCOL, UNSPECIFIED (UNII: 3WJQ0SDW1A)	

Product Characteristics

Color	WHITE	Score	no score
Shape	ROUND (biconvex)	Size	7mm
Flavor		Imprint Code	IT118

Contains**Packaging**

#	Item Code	Package Description	Marketing Start Date	Marketing End Date
1	NDC:72162-1983-1	100 in 1 BOTTLE; Type 0: Not a Combination Product	04/03/2024	

Marketing Information

Marketing Category	Application Number or Monograph Citation	Marketing Start Date	Marketing End Date
ANDA	ANDA077214	09/24/2020	

Labeler - Bryant Ranch Prepack (171714327)**Registrant** - Bryant Ranch Prepack (171714327)**Establishment**

Name	Address	ID/FEI	Business Operations
Bryant Ranch Prepack		171714327	REPACK(72162-1983) , RELABEL(72162-1983)

Revised: 4/2024

Bryant Ranch Prepack