

GEFITINIB - gefitinib tablet, film coated
Natco Pharma USA LLC

HIGHLIGHTS OF PRESCRIBING INFORMATION

These highlights do not include all the information needed to use GEFITINIB TABLETS safely and effectively. See full prescribing information for GEFITINIB TABLETS.

GEFITINIB TABLETS for oral use

Initial U.S. Approval: 2015

INDICATIONS AND USAGE

Gefitinib tablets are tyrosine kinase inhibitor indicated for the first-line treatment of patients with metastatic non-small cell lung cancer (NSCLC) whose tumors have epidermal growth factor receptor (EGFR) exon 19 deletions or exon 21 (L858R) substitution mutations as detected by an FDA-approved test. (1)

Limitation of Use: Safety and efficacy of gefitinib tablets have not been established in patients whose tumors have EGFR mutations other than exon 19 deletions or exon 21 (L858R) substitution mutations. (1)

DOSAGE AND ADMINISTRATION

Recommended dose is 250 mg orally, once daily with or without food. (2.2)

DOSAGE FORMS AND STRENGTHS

Tablets: 250 mg. (3)

CONTRAINDICATIONS

None. (4)

WARNINGS AND PRECAUTIONS

- Interstitial lung disease (ILD): ILD occurred in patients taking gefitinib tablets Withhold gefitinib tablets for worsening of respiratory symptoms. Discontinue gefitinib tablets if ILD is confirmed. (2.4, 5.1)
- Hepatotoxicity: Obtain periodic liver function testing. Withhold gefitinib tablets for Grade 2 or higher for ALT and/or AST elevations. Discontinue for severe hepatic impairment. (2.4, 5.2)
- Gastrointestinal perforation: Discontinue gefitinib tablets for gastrointestinal perforation. (2.4, 5.3)
- Diarrhea: Withhold gefitinib tablets for Grade 3 or higher diarrhea. (2.4, 5.4)
- Ocular Disorders including Keratitis: Withhold gefitinib tablets for signs and symptoms of severe or worsening ocular disorders including keratitis. Discontinue for persistent ulcerative keratitis. (2.4, 5.5)
- Bullous and Exfoliative Skin Disorders: Withhold gefitinib tablets for Grade 3 or higher skin reactions or exfoliative conditions. (2.4,5.6)
- Embryo-fetal Toxicity: Can cause fetal harm. Advise of potential risk to a fetus and use of effective contraception. (5.7,8.1, 8.3)

ADVERSE REACTIONS

The most commonly reported adverse drug reactions (ADRs), reported in more than 20% of the patients and greater than placebo were skin reactions and diarrhea. (6.1)

To report SUSPECTED ADVERSE REACTIONS, contact NATCO PHARMA USA LLC at 1-201-786-6500 or FDA at 1-800-FDA-1088 or www.fda.gov/medwatch.

DRUG INTERACTIONS

- CYP3A4 Inducer: Increase gefitinib tablets to 500 mg daily in patients receiving a strong CYP3A4 inducer. (2.4, 7.1)
- CYP3A4 Inhibitor: Monitor adverse reactions if concomitant use with gefitinib tablets. (7.1)
- Drugs Affecting Gastric pH: Avoid concomitant use of gefitinib tablets with proton pump inhibitors, if possible. (7.1)
- Hemorrhage in patients taking warfarin: Monitor changes in prothrombin time or INR. (7.2)

USE IN SPECIFIC POPULATIONS

Lactation: Discontinue breast-feeding. (8.2)

See 17 for PATIENT COUNSELING INFORMATION.

Revised: 9/2023

FULL PRESCRIBING INFORMATION: CONTENTS*

1 INDICATIONS AND USAGE

2 DOSAGE AND ADMINISTRATION

- 2.1 Patient Selection
- 2.2 Recommended Dose
- 2.3 Administration to Patients Who Have Difficulty Swallowing Solids
- 2.4 Dose Modification

3 DOSAGE FORMS AND STRENGTHS

4 CONTRAINDICATIONS

5 WARNINGS AND PRECAUTIONS

- 5.1 Interstitial Lung Disease (ILD)
- 5.2 Hepatotoxicity
- 5.3 Gastrointestinal Perforation
- 5.4 Severe or Persistent Diarrhea
- 5.5 Ocular Disorders including Keratitis
- 5.6 Bullous and Exfoliative Skin Disorders
- 5.7 Embryo-fetal Toxicity

6 ADVERSE REACTIONS

- 6.1 Clinical Trials Experience
- 6.3 Postmarketing Experience

7 DRUG INTERACTIONS

- 7.1 Drugs Affecting Gefitinib Exposure
- 7.2 Hemorrhage in Patients taking Warfarin

8 USE IN SPECIFIC POPULATIONS

- 8.1 Pregnancy
- 8.2 Lactation
- 8.3 Females and Males of Reproductive Potential
- 8.4 Pediatric Use
- 8.5 Geriatric Use
- 8.6 Renal Impairment
- 8.7 Hepatic Impairment

10 OVERDOSAGE

11 DESCRIPTION

12 CLINICAL PHARMACOLOGY

- 12.1 Mechanism of Action
- 12.3 Pharmacokinetics

13 NONCLINICAL TOXICOLOGY

- 13.1 Carcinogenesis , Mutagenesis , Impairment of Fertility

14 CLINICAL STUDIES

16 HOW SUPPLIED/STORAGE AND HANDLING

17 PATIENT COUNSELING INFORMATION

* Sections or subsections omitted from the full prescribing information are not listed.

FULL PRESCRIBING INFORMATION

1 INDICATIONS AND USAGE

Gefitinib tablets are indicated for the first-line treatment of patients with metastatic non-small cell lung cancer (NSCLC) whose tumors have epidermal growth factor receptor (EGFR) exon 19 deletions or exon 21 (L858R) substitution mutations as detected by an FDA-approved test [see *Clinical Studies (14)*].

Limitation of Use: Safety and efficacy of gefitinib tablets have not been established in patients with metastatic NSCLC whose tumors have EGFR mutations other than exon 19 deletions or exon 21 (L858R) substitution mutations [see *Clinical Studies (14)*].

2 DOSAGE AND ADMINISTRATION

2.1 Patient Selection

Select patients for the first-line treatment of metastatic NSCLC with gefitinib tablets are based on the presence of EGFR exon 19 deletions or exon 21 (L858R) mutations in their tumor or plasma specimens [see *Indications and Usage (1)*, *Clinical Studies (14)*]. If these mutations are not detected in a plasma specimen, test tumor tissue if feasible.

Information on FDA-approved tests for the detection of EGFR mutations in NSCLC is available at: <http://www.fda.gov/CompanionDiagnostics>.

2.2 Recommended Dose

The recommended dose of gefitinib tablets is 250 mg orally once daily with or without food until disease progression or unacceptable toxicity. Do not take a missed dose within 12 hours of the next dose.

2.3 Administration to Patients Who Have Difficulty Swallowing Solids

Immerse gefitinib tablet in 4 to 8 ounces of water by dropping the tablet in water, and stir for approximately 15 minutes. Immediately drink the liquid or administer through a naso-gastric tube. Rinse the container with 4 to 8 ounces of water and immediately drink or administer through the naso-gastric tube.

2.4 Dose Modification

Dose Modifications for Adverse Drug Reactions

Withhold gefitinib tablets (for up to 14 days) for any of the following:

Acute onset or worsening of pulmonary symptoms (dyspnea, cough, fever) [see *Warnings and Precautions (5.1)*]

NCI CTCAE Grade 2 or higher in ALT and/or AST elevations [see *Warnings and Precautions (5.2)*]

NCI CTCAE Grade 3 or higher diarrhea [see *Warnings and Precautions (5.4)*]

Signs and symptoms of severe or worsening ocular disorders including keratitis [see *Warnings and Precautions (5.5)*]

NCI CTCAE Grade 3 or higher skin reactions [see *Warnings and Precautions (5.6)*]

Resume treatment with gefitinib tablets when the adverse reaction fully resolves or improves to NCI CTCAE Grade 1.

- Permanently discontinue gefitinib tablets for:
- Confirmed interstitial lung disease (ILD) [see *Warnings and Precautions (5.1)*]
- Severe hepatic impairment [see *Warnings and Precautions (5.2)*]
- Gastrointestinal perforation [see *Warnings and Precautions (5.3)*]
- Persistent ulcerative keratitis [see *Warnings and Precautions (5.5)*]

Dose Modifications for Drug Interactions

Strong CYP3A4 Inducers

Increase gefitinib tablets to 500 mg daily in the absence of severe adverse drug reaction, and resume gefitinib tablets at 250 mg seven days after discontinuation of the strong CYP3A4 inducer [see *Drug Interactions (7)*, *Clinical Pharmacology (12.3)*].

3 DOSAGE FORMS AND STRENGTHS

250 mg tablets: brown colored, round shaped, film-coated, tablets debossed with 'N' on one side and '250' on other side.

4 CONTRAINDICATIONS

None.

5 WARNINGS AND PRECAUTIONS

5.1 Interstitial Lung Disease (ILD)

ILD or ILD-like adverse drug reactions (e.g., lung infiltration, pneumonitis, acute respiratory distress syndrome, or pulmonary fibrosis) occurred in 1.3% of the 2462 patients who received gefitinib tablets across clinical trials; of these, 0.7% were Grade 3 or higher and 3 cases were fatal.

Withhold gefitinib tablets and promptly investigate for ILD in any patient who presents with worsening of respiratory symptoms such as dyspnea, cough and fever.

Permanently discontinue gefitinib tablets if ILD is confirmed [see *Dosage and Administration (2.4)*, *Adverse Reactions (6.1)*].

5.2 Hepatotoxicity

In patients who received gefitinib tablets across clinical trials, 11.4% of patients had increased alanine aminotransferase (ALT), 7.9% of patients had increased aspartate aminotransferase (AST), and 2.7% of patients had increased bilirubin. Grade 3 or higher liver test abnormalities occurred in 5.1% (ALT), 3.0% (AST), and 0.7% (bilirubin) of patients. The incidence of fatal hepatotoxicity was 0.04%.

Obtain periodic liver function testing. Withhold gefitinib tablets in patients with worsening liver function and discontinue in patients with severe hepatic impairment [see *Dosage and Administration (2.4)*, *Adverse Reactions (6.1)*, *Use in Specific Populations (8.7)*].

5.3 Gastrointestinal Perforation

Gastrointestinal perforation occurred in three (0.1%) of the 2462 gefitinib tablets-treated patients across clinical trials [see *Adverse Reactions (6.1)*]. Permanently discontinue gefitinib tablets in patients who develop gastrointestinal perforation [see *Dosage and Administration (2.4)*].

5.4 Severe or Persistent Diarrhea

Grade 3 or 4 diarrhea occurred in 3% of 2462 gefitinib tablets-treated patients across clinical trials. Withhold gefitinib tablets for severe or persistent (up to 14 days) diarrhea [see *Dosage and Administration (2.4)*, *Adverse Reactions (6.1)*].

5.5 Ocular Disorders including Keratitis

Ocular disorders [keratitis (0.1%), corneal erosion and aberrant eyelash growth (0.2%), conjunctivitis, blephritis and dry eye (6.7%)] occurred in the 2462 gefitinib tablets - treated patients across clinical trials. The incidence of Grade 3 ocular disorders was 0.1% [see *Adverse Reactions (6.1)*]. Interrupt or discontinue gefitinib tablets for severe, or worsening ocular disorders [see *Dosage and Administration (2.4)*].

5.6 Bullous and Exfoliative Skin Disorders

Bullous conditions including toxic epidermal necrolysis, Stevens Johnson syndrome and erythema multiforme have been reported from treatment with gefitinib tablets. Erythema multiforme and dermatitis bullous have been reported in two patients (0.08%) across NSCLC trials (Study 2, Study 3 and Study 4). Gefitinib tablets treatment should be interrupted or discontinued if the patient develops severe bullous, blistering or exfoliating conditions.

5.7 Embryo-fetal Toxicity

Based on its mechanism of action and data from animal reproduction studies gefitinib tablets can cause fetal harm when administered to a pregnant woman. In animal reproductive studies, oral administration of gefitinib from organogenesis through weaning resulted in fetotoxicity and neonatal death at doses below the recommended human dose. Advise pregnant women of the potential risk to a fetus. Advise females of reproductive potential to use effective contraception during treatment with gefitinib tablets and for at least two weeks following completion of therapy [see *Use in Specific Populations (8.1, 8.3)*].

6 ADVERSE REACTIONS

The following adverse drug reactions are discussed in more detail in other sections of the labeling:

- Interstitial Lung Disease [see *Warnings and Precautions (5.1)*]
- Hepatotoxicity [see *Warnings and Precautions (5.2)*]
- Gastrointestinal Perforation [see *Warnings and Precautions (5.3)*]
- Severe or Persistent Diarrhea [see *Warnings and Precautions (5.4)*]
- Ocular Disorders including Keratitis [see *Warnings and Precautions (5.5)*]
- Bullous and Exfoliative Skin Disorders [see *Warning and Precautions (5.6)*]

6.1 Clinical Trials Experience

Because clinical trials are conducted under widely varying conditions, adverse reaction rates observed in the clinical trials of a drug cannot be directly compared to rates in the clinical trials of another drug and may not reflect the rates observed in practice.

The safety gefitinib tablets of is based on the data from 2462 patients with NSCLC who received gefitinib tablets 250 mg daily monotherapy in three randomized clinical studies (Study 2, Study 3 and Study 4). Patients with a history of interstitial lung disease, drug-induced interstitial disease, radiation pneumonitis that required steroid treatment or any evidence of clinically active interstitial lung disease were excluded from these studies.

Controlled Studies:

Study 2 was a randomized, multicenter, open-label trial in which 1217 patients were randomized to receive first-line treatment for metastatic NSCLC; 607 patients received gefitinib tablets 250 mg daily and 589 patients received carboplatin/paclitaxel. The median duration of treatment with gefitinib tablets was 5.9 months. The study population characteristics were: median age 57 years, age less than 65 years (73%), female (79%), Asian (100%), NSCLC adenocarcinoma histology (100%), never smoker (94%), light ex-smoker (6%), ECOG PS 0 or 1 (90%).

Study 3 was a randomized, multicenter, double-blind, placebo-controlled trial in which 1692 patients were randomized to receive second- or third-line treatment for metastatic NSCLC; of which 1126 patients received gefitinib tablets 250 mg daily and 562 patients

received placebo. The median duration of treatment with gefitinib tablets was 2.9 months. The study population characteristics were: median age 62 years, age less than 65 years (60%), female (33%), Caucasian (75%), Asian (21%), NSCLC adenocarcinoma histology (48%), never smoker (22%), ECOG PS 0 or 1 (65%), PS 2 (29%), PS 3 (5%) and two or more prior therapies (51%).

Study 4 was a randomized, multicenter, open-label trial in which 1466 patients were randomized to receive second-line treatment for metastatic NSCLC; 729 patients received gefitinib tablets 250 mg daily and 715 patients received docetaxel. The median duration of treatment with gefitinib tablets was 2.4 months. The study population characteristics were: median age 61 years, age less than 65 years (61%), female (36%), Caucasian (79%), Asian (21%), NSCLC adenocarcinoma histology (54%), never smoker (20%), ECOG PS 0 or 1 (88%) and two or more prior therapies (16%).

The pooled safety database from the three randomized trials was used to evaluate for serious and uncommon adverse drug reactions. Common adverse reactions were evaluated in Study 3. The most frequent adverse reactions in Study 3 (incidence of >20% and greater than placebo) reported in gefitinib tablets-treated patients were skin reactions (47%) and diarrhea (29%). The most frequent fatal adverse reactions in gefitinib tablets-treated patients were respiratory failure (0.9%), pneumonia (0.8%), and pulmonary embolism (0.5%).

Approximately 5% of gefitinib tablets -treated patients and 2.3% of placebo-treated patients discontinued treatment due to an adverse event. The most frequent adverse reactions that led to discontinuation in patients treated with gefitinib tablets were nausea (0.5%), vomiting (0.5%) and diarrhea (0.4%).

Table 1- Selected Adverse Drug Reactions Occurring with an Incidence Rate \geq 5% and an Increase of >2% of Gefitinib Tablets -treated Patients in Study 3

Adverse Reaction	Percentage (%) of patients			
	Gefitinib tablets (N=1126)		Placebo (N=562)	
	All Grades	Grade 3 and 4	All Grades	Grade 3 and 4
Skin and subcutaneous tissue disorders				
Skin reactions ¹	47%	2%	17%	0.4%

Nail disorders ²	5%	0.1%	0.7%	0%
Gastrointestinal disorders				
Diarrhea ³	29%	3%	10%	1%
Vomiting	14%	1.2%	10%	0.4%
Stomatitis ⁴	7%	0.3%	4%	0.2%
Metabolism and nutrition disorders				
Decreased appetite	17%	2.3%	14%	2.0%
Eye disorders				
Conjunctivitis/blepharitis/dry eye ⁵	6%	0%	3.2%	0%

¹ Includes Acne, Acne pustular, Dermatitis, Dermatitis acneiform, Dermatitis exfoliative, Drug eruption, Dry skin, Erythema, Exfoliative rash, Folliculitis, Pruritus, Pruritus generalized, Rash, Rash erythematous, Rash generalized, Rash macular, Rash maculopapular, Rash papular, Rash pruritic, Rash pustular, Rash vesicular, Skin exfoliation, Skin toxicity, Xeroderma

² Includes Ingrowing nail, Nail bed infection, Nail disorder, Nail infection, Onychoclasia, Onycholysis, Paronychia

³ Includes Diarrhea, Feces soft, Frequent bowel movements

⁴ Includes Aphthous stomatitis, Cheilitis, Glossodynia, Mouth ulceration, Mucosal inflammation, Oral mucosal blistering, Stomatitis, Tongue disorder, Tongue ulceration

⁵ Includes Blepharitis, Conjunctival hyperemia, Conjunctivitis, Dry eye, Eye irritation, Eye pruritus, Eye swelling, Eyelid irritation, Eyelid edema, Eyelids pruritus

Table 2 - Treatment Emergent Laboratory Abnormalities Occurring More Frequently in Gefitinib tablets - Treated Patients in Study 3

Adverse Reaction	Gefitinib tablets		Placebo	
	All Grades %	Grade 3 and 4 %	All Grades %	Grade 3 and 4 %
Alanine aminotransferase Increase ¹	38% ²	2.4%	23% ²	1.4% ⁴
Aspartate aminotransferase Increased ¹	40% ³	2.0%	25% ³	1.3% ⁵
Proteinuria	35%	4.7%	31%	3.3%

¹ Patients were allowed to enter the clinical study with lab values of ALT or AST CTCAE grade 1 or 2

² 14% gefitinib patients and 10% placebo patients were CTC grade 1 or 2 ALT at baseline

³ 15% gefitinib patients and 12% placebo patients were CTC grade 1 or 2 AST at baseline

⁴ 0.2% of placebo patients were CTC grade 3 at baseline

⁵ .4% of placebo patients were CTC grade 3 at baseline

The following adverse reactions have been reported with gefitinib tablets across NSCLC trials (Study 2, Study 3 and Study 4) and are not listed elsewhere in Section 6: nausea (18%), asthenia (17%), pyrexia (9%), alopecia (4.7%), hemorrhage (including epistaxis and hematuria) (4.3%), dry mouth (2%), dehydration (1.8%), elevations in blood creatinine (1.5%), allergic reactions including angioedema and urticaria (1.1%), palmar-plantar erythrodysesthesia syndrome (0.2%) and pancreatitis (0.1%).

6.3 Postmarketing Experience

The following adverse reactions have been identified during post-approval use of gefitinib tablets. Because these reactions are reported voluntarily from a population of uncertain size, it is not always possible to reliably estimate their frequency or establish a causal relationship to drug exposure.

Renal and urinary disorders: cystitis, hemorrhagic cystitis

Skin and subcutaneous tissue disorders: cutaneous vasculitis

7 DRUG INTERACTIONS

7.1 Drugs Affecting Gefitinib Exposure

CYP3A4 Inducer

Drugs that are strong inducers of CYP3A4 increase the metabolism of gefitinib and decrease gefitinib plasma concentrations. Increase gefitinib tablets to 500 mg daily in patients receiving a strong CYP3A4 inducer (e.g., rifampicin, phenytoin, or tricyclic antidepressant) and resume gefitinib tablets at 250 mg 7 days after discontinuation of the strong inducer [see *Dosage and Administration (2.4)*, *Clinical Pharmacology (12.3)*].

CYP3A4 Inhibitor

Drugs that are strong inhibitors of CYP3A4 (e.g., ketoconazole and itraconazole) decrease gefitinib metabolism and increase gefitinib plasma concentrations. Monitor adverse reactions when administering strong CYP3A4 inhibitors with gefitinib tablets.

Drugs Affecting Gastric pH

Drugs that elevate gastric pH (e.g., proton pump inhibitors, histamine H₂-receptor antagonists, and antacids) may reduce plasma concentrations of gefitinib. Avoid concomitant use of gefitinib tablets with proton pump inhibitors, if possible. If treatment with a proton-pump inhibitor is required, take gefitinib tablets 12 hours after the last dose or 12 hours before the next dose of the proton-pump inhibitor. Take gefitinib tablets 6 hours after or 6 hours before an H₂-receptor antagonist or an antacid [see *Clinical Pharmacology (12.3)*].

7.2 Hemorrhage in Patients taking Warfarin

International Normalized Ratio (INR) elevations and/or hemorrhage have been reported in some patients taking warfarin while on gefitinib tablets therapy. Patients taking warfarin should be monitored regularly for changes in prothrombin time or INR.

8 USE IN SPECIFIC POPULATIONS

8.1 Pregnancy

Risk Summary

Based on its mechanism of action and animal data, gefitinib tablets can cause fetal harm when administered to a pregnant woman. In animal reproductive studies, oral administration of gefitinib from organogenesis through weaning resulted in fetotoxicity and neonatal death at doses below the recommended human dose (*see Animal Data*). Advise pregnant women of the potential hazard to a fetus or potential risk for loss of the pregnancy.

The background risk of major birth defects and miscarriage for the indicated population is unknown; however, the background risk in the U.S. general population of major birth defects is 2 - 4% and miscarriage is 15 - 20% of clinically recognized pregnancies.

Data

Animal Data

A single dose study in rats showed that gefitinib crosses the placenta after an oral dose of 5 mg/kg (30 mg/m², about 0.2 times the recommended human dose on a mg/m² basis). When pregnant rats were treated with 5 mg/kg from the beginning of organogenesis to the end of weaning there was a reduction in the number of offspring born alive. This effect was more severe at 20 mg/kg (approximate the human clinical dose on a mg/m² basis) and was accompanied by high neonatal mortality soon after parturition. In rabbits, a dose of 20 mg/kg/day (240 mg/m², about twice the recommended dose in humans on a mg/m² basis) caused reduced fetal weight.

8.2 Lactation

Risk Summary

It is not known whether gefitinib tablets is excreted in human milk. Animal studies indicate the gefitinib and its metabolites are present in rat milk at a concentration higher than those in maternal plasma. Because of the potential for serious adverse reactions in nursing infants from gefitinib tablets, advise women to discontinue breast-feeding during treatment with gefitinib tablets.

Data

Animal Data

Levels of gefitinib and its metabolites were 11-to-19-fold higher in milk than in blood, after oral exposure of lactating rats to a dose of 5 mg/kg.

8.3 Females and Males of Reproductive Potential

Contraception

Based on its mechanism of action and animal data, gefitinib tablets can cause fetal harm when administered to a pregnant woman [see *Use in Specific Populations (8.1)*]. Advise females of reproductive potential to use effective contraception during treatment with gefitinib tablets and for at least two weeks following completion of therapy.

Infertility

Gefitinib tablets may result in reduced fertility in females of reproductive potential [see *Nonclinical Toxicology (13.1)*].

8.4 Pediatric Use

The safety and effectiveness of gefitinib tablets in pediatric patients have not been established.

8.5 Geriatric Use

Of the 823 patients enrolled in two randomized, active-controlled clinical trials 374 patients (45%) were 65 years and older, and 93 patients (11%) were 75 years and older. No overall differences in safety were observed between patients 65 years and older and those younger than 65 years. There is insufficient information to assess for differences in efficacy between older and younger patients.

8.6 Renal Impairment

Less than four percent (<4%) of gefitinib and its metabolites are excreted via the kidney. No clinical studies were conducted with gefitinib tablets in patients with severe renal impairment.

8.7 Hepatic Impairment

The systemic exposure of gefitinib was compared in patients with mild, moderate, or severe hepatic impairment due to cirrhosis (according to Child-Pugh classification) and healthy subjects with normal hepatic function (N=10/group). The mean systemic exposure ($AUC_{0-\infty}$) was increased by 40% in patients with mild impairment, 263% in patients with moderate impairment, and 166% in patients with severe hepatic impairment. Monitor adverse reactions when gefitinib tablets are administered to patients with moderate and severe hepatic impairment.

In a study comparing 13 patients with liver metastases and moderate hepatic impairment (addition of CTC grade of baseline AST/SGOT, ALP, and bilirubin equals 3 to 5) to 14 patients with liver metastases and normal hepatic function, the systemic exposure of gefitinib was similar [see *Warnings and Precautions (5.2)*].

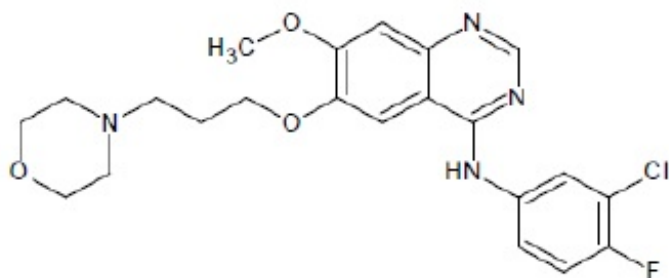
10 OVERDOSAGE

Twenty three patients were treated weekly with doses from 1500 mg to 3500 mg, and gefitinib tablets exposure did not increase with increasing dose. Adverse events were mostly mild to moderate in severity, and were consistent with the known safety profile of gefitinib tablets. In the event of suspected overdose, interrupt gefitinib tablets, institute supportive care, and observe until clinical stabilization. There are no specific measures/treatments that should be taken following gefitinib tablets overdosing.

11 DESCRIPTION

Gefitinib is a kinase inhibitor.

The chemical name of gefitinib is N-(3'-Chloro-4'-fluorophenyl)-7-methoxy-6-{3-(4-morpholinyl)propoxy}-4-quinazolinamine and the following structural formula:



Gefitinib has the molecular formula C₂₂H₂₄ClFN₄O₃, a relative molecular mass of 446.9 daltons and is a White to off-white crystalline powder. Gefitinib is a free base. The molecule has pKa₁ is 6.5 & pKa₂ is 6.9. Gefitinib can be defined as soluble at pH 1, but insoluble above pH 7, freely soluble in dimethylformamide and acetic acid, slightly soluble in methanol.

Gefitinib tablets are available as brown film-coated tablets, containing 250 mg of gefitinib, for oral administration. The inactive ingredients of the tablet core of gefitinib tablets are lactose monohydrate, microcrystalline cellulose, croscarmellose sodium, povidone, and sodium lauryl sulfate and magnesium stearate. Tablet coating contains: polyvinyl alcohol, polyethylene glycol/PEG, talc, titanium dioxide, yellow iron oxide and red iron oxide.

12 CLINICAL PHARMACOLOGY

12.1 Mechanism of Action

The epidermal growth factor receptor (EGFR) is expressed on the cell surface of both normal and cancer cells and plays a role in the processes of cell growth and proliferation. Some EGFR activating mutations (exon 19 deletion or exon 21 point mutation L858R) within NSCLC cells have been identified as contributing to the promotion of tumor cell growth, blocking of apoptosis, increasing the production of

angiogenic factors and facilitating the processes of metastasis.

Gefitinib reversibly inhibits the kinase activity of wild-type and certain activating mutations of EGFR, preventing autophosphorylation of tyrosine residues associated with the receptor, thereby inhibiting further downstream signaling and blocking EGFR-dependent proliferation.

Gefitinib binding affinity for EGFR exon 19 deletion or exon 21 point mutation L858R mutations is higher than its affinity for the wild-type EGFR. Gefitinib also inhibits IGF and PDGF-mediated signaling at clinically relevant concentrations; inhibition of other tyrosine kinase receptors has not been fully characterized.

12.3 Pharmacokinetics

Absorption and Distribution

The mean oral bioavailability of gefitinib is 60%, with peak plasma levels occurring 3-7 hours after dosing. Food does not alter gefitinib bioavailability to a clinically meaningful extent. Gefitinib tablets can be administered with or without food. Gefitinib is extensively distributed throughout the body with a mean steady state volume of distribution of 1400 L following intravenous administration. In vitro binding of gefitinib to human plasma proteins (serum albumin and α 1-acid glycoprotein) is 90%, independent of drug concentrations. Gefitinib is a substrate for the membrane transport P-glycoprotein (P-gp), but it is unlikely to influence gefitinib absorption as P-gp is saturated at higher concentrations.

Metabolism and Elimination

Gefitinib undergoes extensive hepatic metabolism in humans, predominantly by CYP3A4. Three sites of biotransformation have been identified: metabolism of the N-propoxymorpholino-group, demethylation of the methoxysubstituent on the quinazoline, and oxidative defluorination of the halogenated phenyl group. Five metabolites have been fully identified in fecal extracts and the major active component was O-desmethyl gefitinib produced by CYP2D6 metabolism and accounted for 14% of the dose. Eight metabolites were identified in human plasma. Only O-desmethyl gefitinib has exposure comparable to gefitinib. Although this metabolite has similar EGFR-TK activity to gefitinib in the isolated enzyme assay, it had only 1/14 of the potency of gefitinib in one of the cell-based assays.

Gefitinib is cleared primarily by the liver, with total plasma clearance and elimination half-life of 48 hours after intravenous administration. The inter-subject variability (coefficient of variation) for AUC in healthy subjects was 67%. Daily oral administration of gefitinib to cancer patients resulted in a two-fold accumulation compared to single dose administration. Steady state plasma concentrations are achieved within 10 days after daily dosing. Excretion of gefitinib and its metabolites is predominantly via the feces (86%), with renal elimination accounting for less than 4% of the administered dose.

Specific Populations

Age, gender, body weight, ethnicity or renal function: Population pharmacokinetic analyses suggest that patient age, body weight, ethnicity (populations included) or creatinine clearance (above 20 mL/min) has no clinically meaningful effect on predicted

steady state trough concentration of gefitinib. Population pharmacokinetic analyses of Study 1 showed that women had 27% higher exposure than men; however, this difference was not identified in the analyses of other gefitinib clinical studies. No dose adjustment based on patient gender is recommended.

Hepatic Impairment: The systemic exposure of gefitinib was compared between patients with mild, moderate, or severe hepatic impairment due to cirrhosis (according to Child-Pugh classification) and healthy subjects with normal hepatic function (N=10/group). The mean systemic exposure ($AUC_{0-\infty}$) was increased by 40% in patients with mild impairment, 263% in patients with moderate impairment, and 166% in patients with severe hepatic impairment. In a study comparing 13 patients with liver metastases and moderate hepatic impairment to 14 patients with liver metastases and normal hepatic function, the systemic exposure of gefitinib was similar [*see Warnings and Precautions (5.2), Use in Specific Populations (8.7)*].

CYP2D6 Poor metabolizer: CYP2D6 metabolizes gefitinib to O-desmethyl gefitinib in vitro. In healthy CYP2D6 poor metabolizers, O-desmethyl gefitinib concentration was not measurable and the mean exposure to gefitinib was 2-fold higher as compared to the extensive metabolizers. This increase in exposure in CYP2D6 poor metabolizers may be clinically important because some adverse drug reactions are related to higher exposure of gefitinib. No dose adjustment is recommended in patients with a known CYP2D6 poor metabolizer genotype, but these patients should be closely monitored for adverse reactions. The impact of CYP2D6 inhibiting drugs on gefitinib pharmacokinetics has not been evaluated. However, similar precautions should be used when administering CYP2D6 inhibitors with gefitinib tablets because of the possibility of increased exposure in these patients.

An exploratory exposure response analysis showed an increase in the incidence of interstitial lung disease (ILD) with a greater than 2-fold increase in the gefitinib exposure [*see Warnings and Precautions (5.1)*].

Drug-Drug Interactions

Strong CYP3A4 Inducer:

Concomitant administration of rifampicin (600 mg QD for 16 days), a strong inducer of CYP3A4, with gefitinib (500 mg single dose on Day 10 of gefitinib administration) reduced mean AUC of gefitinib by 83% [*see Dosage and Administration (2.4), Drug Interactions (7)*].

CYP3A4 Inhibitor:

Concomitant administration of itraconazole (200 mg QD for 12 days), an inhibitor of CYP3A4, with gefitinib (250 mg single dose on Day 4 of itraconazole administration) to healthy male subjects, increased mean gefitinib AUC by 80% [*see Drug Interactions (7)*].

Drugs Affecting Gastric pH:

Co-administration of high doses of ranitidine with sodium bicarbonate (to maintain the gastric pH above pH 5.0) to healthy subjects decreased mean gefitinib AUC by 47% [*see Drug Interactions (7)*].

In human liver microsome studies, gefitinib had no inhibitory effect on CYP1A2, CYP2C9, and CYP3A4 activities at concentrations ranging from 2-5000 ng/mL. At the highest

concentration studied (5000 ng/mL), gefitinib inhibited CYP2C19 by 24% and CYP2D6 by 43%. Exposure to metoprolol, a substrate of CYP2D6, was increased by 30% when it was given on Day 15 of gefitinib dosing (500 mg daily for 28 days) in patients with solid tumors.

13 NONCLINICAL TOXICOLOGY

13.1 Carcinogenesis , Mutagenesis , Impairment of Fertility

Gefitinib has been tested for genotoxicity in a series of *in vitro* (bacterial mutation, mouse lymphoma, and human lymphocyte) assays and an *in vivo* rat micronucleus test. Under the conditions of these assays, gefitinib did not cause genetic damage.

In a two-year carcinogenicity study in mice, administration of gefitinib at a dose of 270 mg/m²/day (approximately twice the recommended daily dose of 250 mg on a mg/m² basis; dose reduced from 375 mg/m²/day from week 22) caused hepatocellular adenomas in females. In a two-year carcinogenicity study in rats, administration of gefitinib at 60 mg/m²/day (approximately 0.4 times the recommended daily clinical dose on a mg/m² basis) caused hepatocellular adenomas and hemangiomas/hemangiosarcomas of the mesenteric lymph nodes in female rats. The clinical relevance of these findings is unknown

In a dedicated fertility study in rats at doses ≥ 120 mg/m² (approximately equal to the recommended human dose of gefitinib on a mg/m² basis), animals presented with an increased incidence of irregular estrous, decreased corpora lutea, and decreases in uterine implants and live embryos per litter.

14 CLINICAL STUDIES

Non-Small Cell Lung Cancer (NSCLC)

Study 1

The efficacy and safety of gefitinib tablets for the first-line treatment of patients with metastatic NSCLC containing EGFR exon 19 deletions or L858R substitution mutations was demonstrated in a multicenter, single-arm, open-label clinical study (Study 1). A total of 106 treatment-naïve patients with metastatic EGFR mutation positive NSCLC received gefitinib tablets at a dose of 250 mg once daily until disease progression or intolerable toxicity. The major efficacy outcome measure was objective response rate (ORR) according to RECIST v1.1 as evaluated by both a Blinded Independent Central Review (BICR) and investigators. Duration of response (DOR) was an additional outcome measure. Eligible patients were required to have a deletion in EGFR exon 19 or L858R, L861Q, or G719X substitution mutation and no T790M or S768I mutation or exon 20 insertion in tumor specimens as prospectively determined by a clinical trial assay. Tumor samples from 87 patients were tested retrospectively using the *therascreen*[®] EGFR RGQ PCR Kit.

The study population characteristics were: median age 65 years, age 75 years or older (25%), age less than 65 years (49%), white (100%), female (71%), never smokers (64%), WHO PS 0 (45%), WHO PS 1 (48%), WHO PS 2 (7%), and adenocarcinoma histology (97%). Sixty patients had exon 19 deletions (65%), 29 patients had L858R substitution (31%), while two patients each had tumors harboring L861Q or G719X substitution mutation.

The median duration of treatment was 8.0 months. Efficacy results from Study 1 are summarized below.

Table 3 - Efficacy Results in Study 1

Efficacy Parameter	BICR1 Assessment (n=106)²	Investigator Assessment (n=106)
Objective Response Rate ³ (95% CI)	50% (41, 59)	70% (61, 78)
Complete Response Rate	0.9%	1.9%
Partial Response Rate	49%	68%
Median Duration of Response (months) (95% CI)	6.0 (5.6, 11.1)	8.3 (7.6, 11.3)

¹ BICR, Blinded Independent Central Review

² 17 patients without target lesion at baseline detected by BICR were deemed non responders

³ Determined by RECIST v 1.1

The response rates were similar in patients whose tumors had EGFR exon 19 deletions and exon 21 L858R substitution mutations. Two partial responses were observed in both patients whose tumors had G719X substitution mutation with duration of response of at least 2.8 months and 5.6 months, respectively. One of two patients whose tumors had L861Q substitution mutation also achieved a partial response with duration of response of at least 2.8 months.

Study 2

The results of Study 1 were supported by an exploratory analysis of a subset of a randomized, multicenter, open-label trial (Study 2) conducted in patients with metastatic adenocarcinoma histology NSCLC receiving first-line treatment. Patients were randomized (1:1) to receive gefitinib tablets 250 mg orally once daily or up to 6 cycles of carboplatin/paclitaxel. The efficacy outcomes included progression-free survival (PFS) and objective response rate (ORR) as assessed by BICR.

The subset population consisted of 186 of 1217 patients (15%) determined to be EGFR positive by the same clinical trial assay as used in Study 1 and had radiographic scans available for a retrospective assessment by BICR. In this subset, there were 88 gefitinib tablets -treated patients and 98 carboplatin/paclitaxel-treated patients.

Demographic and baseline characteristics of this subset were a median age of 59 years, age 75 years or older (7%), age less than 65 (70%), Asian (100%), female (83%), never smokers (96%), adenocarcinoma histology (100%), and PS 0-1 (94%).

The median duration of treatment for gefitinib tablets -treated patients was 9.8 months. The hazard ratio for PFS favored the gefitinib tablets -treated patients [HR of 0.54 (95% CI: 0.38, 0.79)] with a median PFS of 10.9 months for the gefitinib tablets -treated patients and 7.4 months for the carboplatin/paclitaxel-treated patients as assessed by BICR. In addition, the objective response rate was 67% (95% CI: 56, 77) for gefitinib tablets -treated patients and 41% (95% CI: 31, 51) for carboplatin/paclitaxel-treated patients based on BICR assessment. The median duration of response was 9.6 months for Gefitinib tablets -treated patients and 5.5 months for carboplatin/paclitaxel-treated patients.

16 HOW SUPPLIED/STORAGE AND HANDLING

Gefitinib tablets are available as 250 mg.

250 mg tablets: brown colored, round shaped, film coated tablets debossed with 'N' on one side and '250' on other side.

Gefitinib tablets are supplied as: Bottle of 30 Tablets (NDC 69339-168-03)

Store at controlled room temperature 20°C-25°C (68°F-77°F) [see USP Controlled Room Temperature].

17 PATIENT COUNSELING INFORMATION

Advise the patient to read the FDA-approved patient labelling (Patient Information).

Interstitial Lung Disease: Advise patients to immediately contact their healthcare provider for new onset or worsening of pulmonary symptoms such as dyspnea, cough and fever [see Warnings and Precautions (5.1)].

Hepatotoxicity: Inform patients that they will need to undergo lab tests to monitor for liver function. Advise patients to contact their healthcare provider to report any new symptoms indicating hepatic toxicity [see Warnings and Precautions (5.2)].

Gastrointestinal Perforation: Advise patients that gefitinib tablets can increase the risk of gastrointestinal perforation and to seek immediate medical attention for severe abdominal pain [see Warnings and Precautions (5.3)].

Severe or Persistent Diarrhea: Advise patients to contact their healthcare provider for severe or persistent diarrhea [see Warnings and Precautions (5.4)].

Ocular Disorders including Keratitis: Advise patients promptly to contact their healthcare provider if they develop eye symptoms, lacrimation, light sensitivity, blurred vision, eye pain, red eye or changes in vision [see Warnings and Precautions (5.5)]

Bullous and Exfoliative Skin Disorders: Advise patients that gefitinib tablets can increase the risk of bullous and exfoliative skin disorders and to seek immediately medical

attention for severe skin reactions [see *Warnings and Precautions (5.6)*].

Embryo-fetal Toxicity: Advise pregnant women of the potential risk to a fetus or potential risk for loss of the pregnancy [see *Warnings and Precautions (5.7)*, *Use in Specific Populations (8.1)*]. Advise females of reproductive potential to use effective contraception during treatment with gefitinib tablets and for at least two weeks following completion of therapy [see *Use in Specific Populations (8.3)*].

Lactation: Advise women to discontinue breast-feeding during treatment with gefitinib tablets [see *Use in Specific Populations (8.2)*].

Manufactured by:

Natco Pharma Limited
Kothur - 509 228
Telangana, India.

Manufactured for:

NATCO Pharma USA LLC,
Parsippany, NJ 07054, USA

Patient Information

Gefitinib (ge-FI-tye-nib) tablets

What are gefitinib tablets?

Gefitinib tablets are prescription medicine used to treat people with non-small cell lung cancer (NSCLC) that has spread to other parts of the body and:

- that have certain types of abnormal epidermal growth factor receptor (EGFR) genes, and
- who have not had previous treatment for cancer

Your healthcare provider will perform a test to make sure that gefitinib tablets are right for you.

It is not known if gefitinib tablets are safe and effective in people with NSCLC that have other types of EGFR genes.

It is not known if gefitinib tablets are safe and effective in children.

Before taking gefitinib tablets, tell your healthcare provider about all of your medical conditions, including if you:

- have lung or breathing problems
- ever had liver problems
- have vision or eye problems
- are pregnant or plan to become pregnant. Gefitinib tablets can harm your unborn baby
 - o Females who are able to become pregnant should use an effective method of birth control during treatment with gefitinib tablets and for at least 2 weeks after the last dose of gefitinib tablets. You should avoid becoming pregnant during treatment with gefitinib tablets.
 - o Tell your healthcare provider right away if you become pregnant during treatment with gefitinib tablets.

- are breastfeeding or plan to breastfeed. It is not known if gefitinib passes into your breast milk. Do not breastfeed during treatment with gefitinib tablets. Talk to your healthcare provider about the best way to feed your baby during this time.

Tell your healthcare provider about all the medicines you take, including prescription and over-the-counter medicines, vitamins, or herbal supplements.

If you take a proton pump inhibitor (PPI), H2 blocker, or an antacid medicine, talk to your healthcare provider about the best time to take it during treatment with gefitinib tablets.

If you take a blood thinner called warfarin, your healthcare provider should do blood tests regularly to check how fast your blood clots, during treatment with gefitinib tablets.

How should I take gefitinib tablets?

- Take gefitinib tablets exactly as your healthcare provider tells you to take it.
- Your healthcare provider may change your dose, temporarily stop, or permanently stop treatment with gefitinib tablets if you have side effects.
- Take gefitinib tablet 1 time each day.
- You can take gefitinib tablets with or without food.
- If you miss a dose of gefitinib tablets, take it as soon as you remember. If it is less than 12 hours until your next dose, skip the missed dose.
- Take your next dose at your regular time.
- If you take too much gefitinib tablets, call your healthcare provider or go to the nearest emergency room right away.

If you cannot swallow gefitinib tablets whole:

o place your dose of gefitinib tablet in a container with 4 to 8 ounces of water and stir for about 15 minutes

o drink the mixture right away

o place another 4 to 8 ounces of water in the same container, and drink it right away

What are the possible side effects of gefitinib tablets?

Gefitinib tablets may cause serious side effects, including:

- **lung or breathing problems.** Gefitinib tablets may cause inflammation of the lung that may lead to death. Symptoms may be similar to those symptoms from lung cancer. Tell your healthcare provider right away if you have any new or worsening lung problems, or any combination of the following symptoms: trouble breathing or shortness of breath, cough, or fever.
- **liver problems.** Gefitinib tablets may cause inflammation of the liver that may lead to death. Tell your healthcare provider right away if you have any symptoms of a liver problem which may include:
 - o yellowing of your skin or the white part of your eyes (jaundice)
 - o dark or brown (tea colored) urine
 - o light-colored bowel movements (stools)
 - o decreased appetite
 - o pain on the right side of your stomach (abdomen)

Your healthcare provider will do blood tests to check your liver function during your treatment with gefitinib tablets.

- **a tear in the wall of your stomach or intestines (perforation).** Get emergency medical help right away if you have severe stomach (abdomen) pain.
- **diarrhea.** Diarrhea is common with gefitinib tablets and can sometimes be severe. Tell your healthcare provider right away if you have severe diarrhea or diarrhea that will not go away.
- **eye problems.** Tell your healthcare provider if you get watery eyes, sensitivity to light, blurred vision, eye pain, eye redness, or vision changes.
- **skin reactions.** Skin redness, rash, itching, and acne are common with gefitinib tablets. This may occur on any part of your body. Get medical help right away if you develop severe skin reactions such as peeling or blistering of your skin.

Gefitinib tablets may cause fertility problems in females. Talk to your healthcare provider if you plan to become pregnant.

Tell your healthcare provider if you have any side effect that bothers you or that does not go away.

These are not all the possible side effects of gefitinib tablets. For more information, ask your healthcare provider or pharmacist. Call your doctor for medical advice about side effects.

You may report side effects to FDA at 1-800-FDA-1088

How should I store gefitinib tablets?

Store gefitinib tablets at room temperature between 68°F to 77°F (20°C to 25°C)

Keep gefitinib tablets and all medicines out of the reach of children. General information about the safe and effective use of gefitinib tablets.

Medicines are sometimes prescribed for purposes other than those listed in Patient Information leaflet. Do not use gefitinib tablets for a condition for which it was not prescribed. Do not give gefitinib tablets to other people, even if they have the same symptoms you have. It may harm them. You can ask your healthcare provider or pharmacist for information about gefitinib tablets that is written for health professionals.

What are the ingredients in gefitinib tablets?

Active ingredient: Gefitinib

Inactive ingredients: lactose monohydrate, microcrystalline cellulose, croscarmellose sodium, povidone, sodium lauryl sulfate, magnesium stearate.

Tablet coating contains: polyvinyl alcohol, polyethylene glycol/PEG, talc, titanium dioxide, yellow iron oxide and red iron oxide.

Manufactured by:

Natco Pharma Limited
Kothur - 509 228
Telangana, India.

Manufactured for:

NATCO Pharma USA LLC,
Parsippany, NJ 07054, USA

Issued: 09/2023

Bottle of 30 tablets 250mg

Gefitinib Tablets 250 mg

Bottle of 30 tablets

NDC 69339-168-03

NDC 69339-168-03

Gefitinib Tablets

250 mg 

Rx only **30 Tablets**

 **NATCO PHARMA USA™**

Issu: 09/2023

Each film-coated tablet contains:
Gefitinib 250 mg
DOSAGE: See accompanying Prescribing Information.
WARNING: As with all medications, keep out of the reach of children. Store at controlled room temperature, 20°C-25°C (68°F-77°F) [see USP].

M.L.: 164/MN/AP/95/F/R
Manufactured by: Natco Pharma Limited, India.
Manufactured for: NATCO Pharma USA LLC, Parsippany, NJ 07054, USA

40100533

3 69339 16803 5

2D Barcode

GTIN 00969339168035
SN 123456789012
EXP YYY/MMM
LOT 123456

GEFITINIB

gefitinib tablet, film coated

Product Information

Product Type	HUMAN PRESCRIPTION DRUG	Item Code (Source)	NDC:69339-168
Route of Administration	ORAL		

Active Ingredient/Active Moiety

Ingredient Name	Basis of Strength	Strength
GEFITINIB (UNII: S65743JHBS) (GEFITINIB - UNII:S65743JHBS)	GEFITINIB	250 mg

Inactive Ingredients

Ingredient Name	Strength
LACTOSE MONOHYDRATE (UNII: EWQ57Q8I5X)	
MICROCRYSTALLINE CELLULOSE 101 (UNII: 7T9FYH5QMK)	
MICROCRYSTALLINE CELLULOSE 102 (UNII: PNR0YF693Y)	
CROSCARMELLOSE SODIUM (UNII: M28OL1HH48)	
POVIDONE K30 (UNII: U725QWY32X)	
SODIUM LAURYL SULFATE (UNII: 368GB5141J)	
MAGNESIUM STEARATE (UNII: 70097M6I30)	
POLYVINYL ALCOHOL (UNII: 532B59J990)	
POLYETHYLENE GLYCOL (UNII: 3WJQ0SDW1A)	
TALC (UNII: 7SEV7J4R1U)	
FERRIC OXIDE YELLOW (UNII: EX438O2MRT)	
FERRIC OXIDE RED (UNII: 1K09F3G675)	
TITANIUM DIOXIDE (UNII: 15FIX9V2JP)	

Product Characteristics

Color	BROWN	Score	no score
Shape	ROUND	Size	11mm
Flavor		Imprint Code	N;250
Contains			

Packaging

#	Item Code	Package Description	Marketing Start Date	Marketing End Date
1	NDC:69339-168-03	30 in 1 BOTTLE; Type 0: Not a Combination Product	06/05/2023	

Marketing Information

Marketing Category	Application Number or Monograph Citation	Marketing Start Date	Marketing End Date
ANDA	ANDA212827	06/05/2023	

Labeler - Natco Pharma USA LLC (079590418)

Revised: 9/2023

Natco Pharma USA LLC