

CEPHALEXIN- cephalexin capsule
CEPHALEXIN- cephalexin powder, for suspension
CEPHALEXIN- cephalexin tablet
Teva Pharmaceuticals USA, Inc.

HIGHLIGHTS OF PRESCRIBING INFORMATION

These highlights do not include all the information needed to use CEPHALEXIN safely and effectively. See full prescribing information for CEPHALEXIN.

CEPHALEXIN capsules, CEPHALEXIN for oral suspension, and CEPHALEXIN tablets, for oral use
Initial U.S. Approval: 1971

----- **INDICATIONS AND USAGE** -----

Cephalexin is a cephalosporin antibacterial drug indicated for the treatment of the following infections caused by susceptible isolates of designated bacteria:

- Respiratory tract infection (1.1)
- Otitis media (1.2)
- Skin and skin structure infections (1.3)
- Bone infections (1.4)
- Genitourinary tract infections (1.5)

To reduce the development of drug-resistant bacteria and maintain the effectiveness of cephalexin capsules, cephalexin for oral suspension, and cephalexin tablets and other antibacterial drugs, cephalexin capsules, cephalexin for oral suspension, and cephalexin tablets should be used only to treat infections that are proven or strongly suspected to be caused by bacteria. (1.6)

----- **DOSAGE AND ADMINISTRATION** -----

| | |
|--|--|
| Adults and patients at least 15 years of age | The usual dose is 250 mg every 6 hours, but a dose of 500 mg every 12 hours may be administered (2.1) |
| Pediatric patients (over 1 year of age) | <ul style="list-style-type: none">• Otitis media: 75 to 100 mg/kg in equally divided doses every 6 hours (2.2)• All other indications: 25 to 50 mg/kg given in equally divided doses (2.2)• In severe infections: 50 to 100 mg/kg may be administered in equally divided doses (2.2) |

- Duration of therapy ranges from 7 to 14 days depending on the infection type and severity. (2)
- Dosage adjustment is required in patients with severe and end stage renal disease (ESRD) defined as creatinine clearance below 30 mL/min. (2.3)

----- **DOSAGE FORMS AND STRENGTHS** -----

Capsules: 250 mg and 500 mg (3)
For oral suspension: 125 mg/5 mL and 250 mg/5 mL
Tablets: 250 mg and 500 mg

----- **CONTRAINDICATIONS** -----

Patients with known hypersensitivity to cephalexin or other members of the cephalosporin class of antibacterial drugs. (4)

----- **WARNINGS AND PRECAUTIONS** -----

- **Serious hypersensitivity (anaphylactic) reactions:** Prior to use, inquire regarding history of hypersensitivity to beta-lactam antibacterial drugs. Discontinue the drug if signs or symptoms of an allergic reaction occur and institute supportive measures. (5.1)
- **Clostridium difficile-associated diarrhea (CDAD):** Evaluate if diarrhea occurs. (5.2)
- **Direct Coombs' Test Seroconversion:** If anemia develops during or after cephalexin therapy, evaluate for drug-induced hemolytic anemia. (5.3)
- **Seizure Potential:** Use lower dose in patients with renal impairment. (5.4)

----- **ADVERSE REACTIONS** -----

The most common adverse reactions associated with cephalexin include diarrhea, nausea, vomiting, dyspepsia and abdominal pain. (6)

To report SUSPECTED ADVERSE REACTIONS, contact Teva Pharmaceuticals USA, Inc. at 1-888-838-2872 or FDA at 1-800-FDA-1088 or www.fda.gov/medwatch.

-----**DRUG INTERACTIONS**-----

- Metformin: increased metformin concentrations. Monitor for hypoglycemia. (7.1)
- Probenecid - The renal excretion of cephalexin is inhibited by probenecid. Co-administration of probenecid with cephalexin is not recommended. (7.2)
- Administration of cephalexin may result in a false-positive reaction for glucose in the urine. (7.3)

-----**USE IN SPECIFIC POPULATIONS**-----

- Renal Impairment: Monitor patients longer for toxicity and drug interactions due to delayed clearance. (8.6)

See 17 for PATIENT COUNSELING INFORMATION.

Revised: 1/2019

FULL PRESCRIBING INFORMATION: CONTENTS*

1 INDICATIONS AND USAGE

- 1.1 Respiratory Tract Infections
- 1.2 Otitis Media
- 1.3 Skin and Skin Structure Infections
- 1.4 Bone Infections
- 1.5 Genitourinary Tract Infections
- 1.6 Usage

2 DOSAGE AND ADMINISTRATION

- 2.1 Adults and Pediatric Patients at Least 15 Years of Age
- 2.2 Pediatric Patients (over 1 year of age)
- 2.3 Dosage Adjustments in Adult and Pediatric Patients at Least 15 Years of Age with Renal Impairment

3 DOSAGE FORMS AND STRENGTHS

4 CONTRAINDICATIONS

5 WARNINGS AND PRECAUTIONS

- 5.1 Hypersensitivity Reactions
- 5.2 *Clostridium difficile*-Associated Diarrhea
- 5.3 Direct Coombs' Test Seroconversion
- 5.4 Seizure Potential
- 5.5 Prolonged Prothrombin Time
- 5.6 Development of Drug-Resistant Bacteria

6 ADVERSE REACTIONS

- 6.1 Clinical Trials Experience

7 DRUG INTERACTIONS

- 7.1 Metformin
- 7.2 Probenecid
- 7.3 Interaction with Laboratory or Diagnostic Testing

8 USE IN SPECIFIC POPULATIONS

- 8.1 Pregnancy
- 8.2 Lactation
- 8.4 Pediatric Use
- 8.5 Geriatric Use
- 8.6 Renal Impairment

10 OVERDOSAGE

11 DESCRIPTION

12 CLINICAL PHARMACOLOGY

12.1 Mechanism of Action

12.3 Pharmacokinetics

12.4 Microbiology

13 NONCLINICAL TOXICOLOGY

13.1 Carcinogenesis, Mutagenesis, Impairment of Fertility

16 HOW SUPPLIED/STORAGE AND HANDLING

17 PATIENT COUNSELING INFORMATION

Cephalexin Capsules USP 250 mg 100s Label Text

Cephalexin Capsules USP 500 mg 100s Label Text

Cephalexin FOS USP 125 mg per 5 mL 100 mL Label Text

Cephalexin FOS USP 250 mg per 5 mL 100 mL Label Text

Cephalexin Tablets USP 250 mg 100s Label Text

Cephalexin Tablets USP 500 mg 100s Label Text

* Sections or subsections omitted from the full prescribing information are not listed.

FULL PRESCRIBING INFORMATION

1 INDICATIONS AND USAGE

1.1 Respiratory Tract Infections

Cephalexin is indicated for the treatment of respiratory tract infections caused by susceptible isolates of *Streptococcus pneumoniae* and *Streptococcus pyogenes*.

1.2 Otitis Media

Cephalexin is indicated for the treatment of otitis media caused by susceptible isolates of *Streptococcus pneumoniae*, *Haemophilus influenzae*, *Staphylococcus aureus*, *Streptococcus pyogenes*, and *Moraxella catarrhalis*.

1.3 Skin and Skin Structure Infections

Cephalexin is indicated for the treatment of skin and skin structure infections caused by susceptible isolates of the following Gram-positive bacteria: *Staphylococcus aureus* and *Streptococcus pyogenes*.

1.4 Bone Infections

Cephalexin is indicated for the treatment of bone infections caused by susceptible isolates of *Staphylococcus aureus* and *Proteus mirabilis*.

1.5 Genitourinary Tract Infections

Cephalexin is indicated for the treatment of genitourinary tract infections, including acute prostatitis, caused by susceptible isolates of *Escherichia coli*, *Proteus mirabilis*, and *Klebsiella pneumoniae*.

1.6 Usage

To reduce the development of drug-resistant bacteria and maintain the effectiveness of cephalexin capsules, cephalexin for oral suspension, and cephalexin tablets and other antibacterial drugs, cephalexin capsules, cephalexin for oral suspension, and cephalexin tablets should be used only to treat infections that are proven or strongly suspected to be caused by susceptible bacteria. When culture and susceptibility information is available, this information should be considered in selecting or modifying antibacterial therapy. In the absence of such data, local epidemiology and susceptibility patterns may contribute to the empiric selection of therapy.

2 DOSAGE AND ADMINISTRATION

2.1 Adults and Pediatric Patients at Least 15 Years of Age

The usual dose of oral cephalexin is 250 mg every 6 hours, but a dose of 500 mg every 12 hours may be administered. Treatment is administered for 7 to 14 days.

For more severe infections larger doses of oral cephalexin may be needed, up to 4 grams daily in two to four equally divided doses.

2.2 Pediatric Patients (over 1 year of age)

The recommended total daily dose of oral cephalexin for pediatric patients is 25 to 50 mg/kg given in equally divided doses for 7 to 14 days. In the treatment of β -hemolytic streptococcal infections, duration of at least 10 days is recommended. In severe infections, a total daily dose of 50 to 100 mg/kg may be administered in equally divided doses.

For the treatment of otitis media, the recommended daily dose is 75 to 100 mg/kg given in equally divided doses.

| | Cephalexin Suspension | |
|---------------|-----------------------|-----------------------|
| <u>Weight</u> | <u>125 mg/5 mL</u> | <u>250 mg/5 mL</u> |
| 10 kg (22 lb) | 1/2 to 1 tsp q.i.d. | 1/4 to 1/2 tsp q.i.d. |
| 20 kg (44 lb) | 1 to 2 tsp q.i.d. | 1/2 to 1 tsp q.i.d. |
| 40 kg (88 lb) | 2 to 4 tsp q.i.d. | 1 to 2 tsp q.i.d. |
| | <u>or</u> | |
| <u>Weight</u> | <u>125 mg/5 mL</u> | <u>250 mg/5 mL</u> |
| 10 kg (22 lb) | 1 to 2 tsp b.i.d. | 1/2 to 1 tsp b.i.d. |
| 20 kg (44 lb) | 2 to 4 tsp b.i.d. | 1 to 2 tsp b.i.d. |
| 40 kg (88 lb) | 4 to 8 tsp b.i.d. | 2 to 4 tsp b.i.d. |

Directions for Mixing

125 mg per 5 mL (100 mL when mixed): Prepare suspension at time of dispensing. Add to the bottle a total of 71 mL of water. For ease in preparation, tap bottle to loosen powder, add the water in 2 portions, shaking well after each addition. The resulting suspension will contain cephalexin monohydrate equivalent to 125 mg cephalexin in each 5 mL (teaspoonful).

125 mg per 5 mL (200 mL when mixed): Prepare suspension at time of dispensing. Add to the bottle a total of 140 mL of water. For ease in preparation, tap bottle to loosen powder, add the water in 2 portions, shaking well after each addition. The resulting suspension will contain cephalexin monohydrate equivalent to 125 mg cephalexin in each 5 mL (teaspoonful).

250 mg per 5 mL (100 mL when mixed): Prepare suspension at time of dispensing. Add to the bottle a total of 71 mL of water. For ease in preparation, tap bottle to loosen powder, add the water in 2 portions, shaking well after each addition. The resulting suspension will contain cephalexin monohydrate equivalent to 250 mg cephalexin in each 5 mL (teaspoonful).

250 mg per 5 mL (200 mL when mixed): Prepare suspension at time of dispensing. Add to the bottle a total of 140 mL of water. For ease in preparation, tap bottle to loosen powder, add the water in 2 portions, shaking well after each addition. The resulting suspension will contain cephalexin monohydrate equivalent to 250 mg cephalexin in each 5 mL (teaspoonful).

* After mixing, store in refrigerator. May be kept for 14 days without significant loss of potency.

2.3 Dosage Adjustments in Adult and Pediatric Patients at Least 15 Years of Age with Renal Impairment

Administer the following dosing regimens for cephalexin to patients with impaired renal function [see *Warnings and Precautions (5.4) and Use in Specific Populations (8.6)*].

Table 1. Recommended Dose Regimen for Patients with Renal Impairment

| Renal function | Dose regimen recommendation |
|--|--|
| Creatinine clearance > 60 mL/min | No dose adjustment |
| Creatinine clearance 30 to 59 mL/min | No dose adjustment; maximum daily dose should not exceed 1 g |
| Creatinine clearance 15 to 29 mL/min | 250 mg, every 8 hours or every 12 hours |
| Creatinine clearance 5 to 14 mL/min not yet on dialysis* | 250 mg, every 24 hours |
| Creatinine clearance 1 to 4 mL/min not yet on dialysis* | 250 mg, every 48 hours or every 60 hours |

*There is insufficient information to make dose adjustment recommendations in patients on hemodialysis.

3 DOSAGE FORMS AND STRENGTHS

Cephalexin Capsules USP

250 mg: Swedish orange body and gray cap imprinted “TEVA” on the cap and “3145” on the body

500 mg: Swedish orange body and Swedish orange cap imprinted “TEVA” on the cap and “3147” on the body

Cephalexin for Oral Suspension USP

A cherry mixed fruit flavored formula - 125 mg/5 mL and 250 mg/5 mL

Cephalexin Tablets USP

250 mg: Tablet identification number and color: white, capsule-shaped tablet, debossed “2238” on one side with a score between the “2” and the “3” and “TEVA” on the reverse side.

500 mg: Tablet identification number and color: white, capsule-shaped tablet, debossed “2240” on one side with a score between the “2” and the “4” and “TEVA” on the reverse side.

4 CONTRAINDICATIONS

Cephalexin is contraindicated in patients with known hypersensitivity to cephalexin or other members of the cephalosporin class of antibacterial drugs.

5 WARNINGS AND PRECAUTIONS

5.1 Hypersensitivity Reactions

Allergic reactions in the form of rash, urticaria, angioedema, anaphylaxis, erythema multiforme, Stevens-Johnson syndrome, or toxic epidermal necrolysis have been reported with the use of cephalexin. Before therapy with cephalexin is instituted, inquire whether the patient has a history of hypersensitivity reactions to cephalexin, cephalosporins, penicillins, or other drugs. Cross-hypersensitivity among beta-lactam antibacterial drugs may occur in up to 10% of patients with a history of penicillin allergy.

If an allergic reaction to cephalexin occurs, discontinue the drug and institute appropriate treatment.

5.2 *Clostridium difficile*-Associated Diarrhea

Clostridium difficile-associated diarrhea (CDAD) has been reported with use of nearly all antibacterial agents, including cephalexin, and may range in severity from mild diarrhea to fatal colitis. Treatment with antibacterial agents alters the normal flora of the colon leading to overgrowth of *C. difficile*.

C. difficile produces toxins A and B, which contribute to the development of CDAD. Hypertoxin-producing strains of *C. difficile* cause increased morbidity and mortality, as these infections can be refractory to antimicrobial therapy and may require colectomy. CDAD must be considered in all patients who present with diarrhea following antibiotic use. Careful medical history is necessary since CDAD has been reported to occur over two months after the administration of antibacterial agents.

If CDAD is suspected or confirmed, ongoing antibiotic use not directed against *C. difficile* may need to be discontinued. Appropriate fluid and electrolyte management, protein supplementation, antibiotic treatment of *C. difficile*, and surgical evaluation should be instituted as clinically indicated.

5.3 Direct Coombs' Test Seroconversion

Positive direct Coombs' tests have been reported during treatment with the cephalosporin antibacterial drugs including cephalexin. Acute intravascular hemolysis induced by cephalexin therapy has been reported. If anemia develops during or after cephalexin therapy, perform a diagnostic work-up for drug-induced hemolytic anemia, discontinue cephalexin and institute appropriate therapy.

5.4 Seizure Potential

Several cephalosporins have been implicated in triggering seizures, particularly in patients with renal impairment when the dosage was not reduced. If seizures occur, discontinue cephalexin. Anticonvulsant therapy can be given if clinically indicated.

5.5 Prolonged Prothrombin Time

Cephalosporins may be associated with prolonged prothrombin time. Those at risk include patients with renal or hepatic impairment, or poor nutritional state, as well as patients receiving a protracted course of antibacterial therapy, and patients receiving anticoagulant therapy. Monitor prothrombin time in patients at risk and manage as indicated.

5.6 Development of Drug-Resistant Bacteria

Prescribing cephalexin in the absence of a proven or strongly suspected bacterial infection is unlikely to provide benefit to the patient and increases the risk of the development of drug-resistant bacteria.

Prolonged use of cephalexin may result in the overgrowth of nonsusceptible organisms. Careful observation of the patient is essential. If superinfection occurs during therapy, appropriate measures should be taken.

6 ADVERSE REACTIONS

The following serious events are described in greater detail in the Warning and Precautions section:

- Hypersensitivity reactions [see *Warning and Precautions* (5.1)]
- *Clostridium difficile*-associated diarrhea [see *Warnings and Precautions* (5.2)]
- Direct Coombs' Test Seroconversion [see *Warnings and Precautions* (5.3)]
- Seizure Potential [see *Warnings and Precautions* (5.4)]
- Effect on Prothrombin Activity [see *Warnings and Precautions* (5.5)]
- Development of Drug-Resistant Bacteria [see *Warnings and Precautions* (5.6)]

6.1 Clinical Trials Experience

Because clinical trials are conducted under widely varying conditions, adverse reaction rates observed in the clinical trials of a drug cannot be directly compared to rates in the clinical trials of another drug and may not reflect the rates observed in practice.

In clinical trials, the most frequent adverse reaction was diarrhea. Nausea and vomiting, dyspepsia, gastritis, and abdominal pain have also occurred. As with penicillins and other cephalosporins, transient hepatitis and cholestatic jaundice have been reported.

Other reactions have included hypersensitivity reactions, genital and anal pruritus, genital candidiasis, vaginitis and vaginal discharge, dizziness, fatigue, headache, agitation, confusion, hallucinations, arthralgia, arthritis, and joint disorder. Reversible interstitial nephritis has been reported. Eosinophilia, neutropenia, thrombocytopenia, hemolytic anemia, and slight elevations in aspartate transaminase (AST) and alanine transaminase (ALT) have been reported.

In addition to the adverse reactions listed above that have been observed in patients treated with cephalexin, the following adverse reactions and other altered laboratory tests have been reported for cephalosporin class antibacterial drugs:

Other Adverse Reactions: Fever, colitis, aplastic anemia, hemorrhage, renal dysfunction, and toxic nephropathy.

Altered Laboratory Tests: Prolonged prothrombin time, increased blood urea nitrogen (BUN), increased creatinine, elevated alkaline phosphatase, elevated bilirubin, elevated lactate dehydrogenase (LDH), pancytopenia, leukopenia, and agranulocytosis.

7 DRUG INTERACTIONS

7.1 Metformin

Administration of cephalexin with metformin results in increased plasma metformin concentrations and decreased renal clearance of metformin.

Careful patient monitoring and dose adjustment of metformin is recommended in patients concomitantly taking cephalexin and metformin [see *Clinical Pharmacology* (12.3)].

7.2 Probenecid

The renal excretion of cephalexin is inhibited by probenecid. Co-administration of probenecid with cephalexin is not recommended.

7.3 Interaction with Laboratory or Diagnostic Testing

A false-positive reaction may occur when testing for the presence of glucose in the urine using Benedict's solution or Fehling's solution.

8 USE IN SPECIFIC POPULATIONS

8.1 Pregnancy

Risk Summary

Available data from published epidemiologic studies and pharmacovigilance case reports over several decades with cephalosporin use, including Cephalexin use in pregnant women have not established drug-associated risks of major birth defects, miscarriage, or adverse maternal or fetal outcomes (*see Data*).

Animal reproduction studies with mice and rats using oral doses of cephalexin that are 0.6- and 1.2-times the maximum recommended human dose (MRHD) based on body surface area during organogenesis revealed no evidence of harm to the fetus (*see Data*).

The estimated background risk of major birth defects and miscarriage for the indicated population is unknown.

All pregnancies have a background risk of birth defect, loss, or other adverse outcomes. In the U.S. general population, the estimated background risk of major birth defects and miscarriage in clinically recognized pregnancies is 2% to 4% and 15% to 20%, respectively.

Data

Human Data

While available studies cannot definitively establish the absence of risk, published data from epidemiologic studies and postmarketing case reports over several decades have not identified a consistent association with

cephalosporin use, including Cephalexin, during pregnancy, and major birth defects, miscarriage, or other adverse maternal or fetal outcomes. Available studies have methodologic limitations, including small sample size, retrospective data collection, and inconsistent comparator groups.

Animal Data

In animal reproduction studies, pregnant mice and rats administered oral cephalexin doses of 250 or 500 mg/kg/day (approximately 0.6 and 1.2 times the MRHD) based on body surface area, respectively during the period of organogenesis showed no adverse effects on embryofetal development.

In a pre- and post-natal developmental toxicity study, pregnant rats that received oral doses of 250 or 500 mg/kg/day of cephalexin from Day 15 of pregnancy to litter Day 21 showed no adverse effects on parturition, litter size, or growth of offspring.

8.2 Lactation

Risk Summary

Data from a published clinical lactation study reports that cephalexin is present in human milk. The Relative Infant Dose (RID) is considered to be <1% of the maternal weight adjusted dose. There are no data on the effects of cephalexin on the breastfed child or on milk production.

The development of health benefits of breastfeeding should be considered along with the mother's clinical need for cephalexin and any potential adverse effects on the breastfed child from cephalexin or from the underlying maternal condition.

8.4 Pediatric Use

The safety and effectiveness of cephalexin in pediatric patients was established in clinical trials for the dosages described in the dosage and administration section [*see Dosage and Administration (2.2)*].

8.5 Geriatric Use

Of the 701 subjects in 3 published clinical studies of cephalexin, 433 (62%) were 65 and over. No overall differences in safety or effectiveness were observed between these subjects and younger subjects, and other reported clinical experience has not identified differences in responses between the elderly and younger patients.

This drug is substantially excreted by the kidney, and the risk of toxic reactions to this drug may be greater in patients with impaired renal function. Because elderly patients are more likely to have decreased renal function, care should be taken in dose selection [*see Warnings and Precautions (5.4)*].

8.6 Renal Impairment

Cephalexin should be administered with careful monitoring in the presence of renal impairment (creatinine clearance < 30 mL/min, with or without dialysis). Under such conditions, careful clinical observation and laboratory studies renal function monitoring should be conducted because safe dosage may be lower than that usually recommended [see *Dosage and Administration (2.3)*]. Monitor patients longer for toxicity and drug interactions due to delayed clearance.

10 OVERDOSAGE

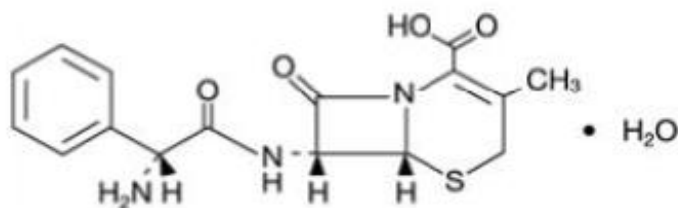
Symptoms of oral overdose may include nausea, vomiting, epigastric distress, diarrhea, and hematuria. In the event of an overdose, institute general supportive measures.

Forced diuresis, peritoneal dialysis, hemodialysis, or charcoal hemoperfusion have not been established as beneficial for an overdose of cephalexin.

11 DESCRIPTION

Cephalexin, USP is a semisynthetic cephalosporin antibiotic intended for oral administration. It is 7-(D- α -amino- α -phenylacetamido)-3-methyl-3-cephem-4-carboxylic acid, monohydrate.

Cephalexin, USP has the following structural formula:



$C_{16}H_{17}N_3O_4S \cdot H_2O$ M.W. 365.41

The nucleus of cephalexin, USP is related to that of other cephalosporin antibiotics. The compound is a zwitterion; i.e., the molecule contains both a basic and an acidic group. The isoelectric point of cephalexin, USP in water is approximately 4.5 to 5.

The crystalline form of cephalexin, USP which is available is a monohydrate. It is a white crystalline solid having a bitter taste. Solubility in water is low at room temperature; 1 or 2 mg/mL may be dissolved readily, but higher concentrations are obtained with increasing difficulty.

The cephalosporins differ from penicillins in the structure of the bicyclic ring system. Cephalexin, USP has a D-phenylglycyl group as substituent at the 7-amino position and an unsubstituted methyl group at the 3-position.

Each capsule contains cephalexin monohydrate, USP equivalent to 250 mg (720 μ mol) or 500 mg (1,439 μ mol) of cephalexin.

Inactive Ingredients: CAPSULES: magnesium stearate, silicon dioxide, and sodium starch glycolate.

Capsule Shell and Print Constituents: black iron oxide, D&C Yellow #10 Aluminum Lake, FD&C Blue #1 Aluminum Lake, FD&C Blue #2 Aluminum Lake, FD&C Red #40 Aluminum Lake, gelatin, pharmaceutical glaze modified in SD-45, silicon dioxide or carboxymethylcellulose sodium, sodium lauryl sulfate, titanium dioxide and may contain propylene glycol. In addition, the 250 mg capsule shell contains yellow iron oxide.

After mixing, each 5 mL of cephalexin for oral suspension USP will contain cephalexin monohydrate, USP equivalent to 125 mg (360 μ mol) or 250 mg (720 μ mol) of cephalexin.

Inactive Ingredients: SUSPENSION: FD&C Red #40, cherry mixed fruit flavor (artificial flavors, benzyl alcohol, maltodextrin, and modified corn starch), silicon dioxide, sodium benzoate, sugar (fruit granulated), and xanthan gum.

Each tablet contains cephalexin monohydrate, USP equivalent to 250 mg (720 µmol) or 500 mg (1,439 µmol) of cephalexin.

Inactive Ingredients: TABLETS: hypromellose, magnesium stearate, microcrystalline cellulose, polyethylene glycol, polysorbate 80, sodium starch glycolate, and titanium dioxide.

12 CLINICAL PHARMACOLOGY

12.1 Mechanism of Action

Cephalexin is a cephalosporin antibacterial drug [see *Microbiology (12.4)*].

12.3 Pharmacokinetics

Absorption: Cephalexin is acid stable and may be given without regard to meals. Following doses of 250 mg, 500 mg, and 1 g, average peak serum levels of approximately 9, 18, and 32 mcg/mL, respectively, were obtained at 1 hour. Serum levels were detectable 6 hours after administration (at a level of detection of 0.2 mcg/mL).

Distribution: Cephalexin is approximately 10% to 15% bound to plasma proteins.

Excretion: Cephalexin is excreted in the urine by glomerular filtration and tubular secretion. Studies showed that over 90% of the drug was excreted unchanged in the urine within 8 hours. During this period, peak urine concentrations following the 250 mg, 500 mg, and 1 g doses were approximately 1000, 2200, and 5000 mcg/mL respectively.

Drug Interactions

In healthy subjects given single 500 mg doses of cephalexin and metformin, plasma metformin mean C_{max} and AUC increased by an average of 34% and 24%, respectively, and metformin mean renal clearance decreased by 14%. No information is available about the interaction of cephalexin and metformin following multiple doses of either drug.

12.4 Microbiology

Mechanism of Action

Cephalexin is a bactericidal agent that acts by the inhibition of bacterial cell-wall synthesis.

Resistance

Methicillin-resistant staphylococci and most isolates of enterococci are resistant to cephalexin. Cephalexin is not active against most isolates of *Enterobacter* spp., *Morganella morganii*, and *Proteus vulgaris*. Cephalexin has no activity against *Pseudomonas* spp., or *Acinetobacter calcoaceticus*. Penicillin-resistant *Streptococcus pneumoniae* is usually cross-resistant to beta-lactam antibacterial drugs.

Antimicrobial Activity

Cephalexin has been shown to be active against most isolates of the following bacteria both *in vitro* and in clinical infections [see *Indications and Usage (1)*].

Gram-positive bacteria

Staphylococcus aureus (methicillin-susceptible isolates only) *Streptococcus pneumoniae* (penicillin-susceptible isolates)

Gram-negative bacteria

Escherichia coli

Haemophilus influenzae

Klebsiella pneumoniae

Moraxella catarrhalis

Proteus mirabilis

Susceptibility Testing

For specific information regarding susceptibility test interpretive criteria and associated test methods and quality control standards recognized by FDA for this drug, please see: <https://www.fda.gov/STIC>.

13 NONCLINICAL TOXICOLOGY

13.1 Carcinogenesis, Mutagenesis, Impairment of Fertility

Lifetime studies in animals have not been performed to evaluate the carcinogenic potential of cephalexin. Tests to determine the mutagenic potential of cephalexin have not been performed. In male and female rats, fertility and reproductive performance were not affected by cephalexin oral doses up to 1.5 times the highest recommended human dose based upon body surface area.

16 HOW SUPPLIED/STORAGE AND HANDLING

Cephalexin Capsules USP—

250 mg: Swedish orange body and gray cap imprinted “TEVA” on the cap and “3145” on the body, in bottles of 100 (NDC 0093-3145-01) and 500 (NDC 0093-3145-05).

500 mg: Swedish orange body and Swedish orange cap imprinted “TEVA” on the cap and “3147” on the body, in bottles of 100 (NDC 0093-3147-01) and 500 (NDC 0093-3147-05).

Store at 20° to 25°C (68° to 77°F) [See USP Controlled Room Temperature].

Dispense in a tight, light-resistant container.

Cephalexin for Oral Suspension* USP

(a cherry mixed fruit flavored formula)—

125 mg/5 mL: bottles of 100 mL (NDC 0093-4175-73) and 200 mL (NDC 0093-4175-74).

250 mg/5 mL: bottles of 100 mL (NDC 0093-4177-73) and 200 mL (NDC 0093-4177-74).

Directions for mixing are included on the label.

Store at 20° to 25°C (68° to 77°F) [See USP Controlled Room Temperature].

Shake well before using. Keep tightly closed.

* After mixing, store in refrigerator. May be kept for 14 days without significant loss of potency.

Cephalexin Tablets USP—

250 mg: bottles of 100 (NDC 0093-2238-01). Tablet identification number and color: white, capsule-shaped tablet, debossed “2238” on one side with a score between the “2” and the “3” and “TEVA” on the reverse side.

500 mg: bottles of 100 (NDC 0093-2240-01). Tablet identification number and color: white, capsule-shaped tablet, debossed “2240” on one side with a score between the “2” and the “4” and “TEVA” on the reverse side.

Store dry powder at 20° to 25°C (68° to 77°F) [See USP Controlled Room Temperature].

17 PATIENT COUNSELING INFORMATION

Allergic Reactions

Advise patients that allergic reactions, including serious allergic reactions, could occur and that serious reactions require immediate treatment. Ask the patient about any previous hypersensitivity reactions to cephalexin, other beta-lactams (including cephalosporins) or other allergens (5.1)

Diarrhea

Advise patients that diarrhea is a common problem caused by antibacterial drugs and usually resolves when the drug is discontinued. Sometimes, frequent watery or bloody diarrhea may occur and may be a sign of a more serious intestinal infection. If severe watery or bloody diarrhea develops, advise patients to contact their healthcare provider.

Antibacterial Resistance

Counsel patients that antibacterial drugs including cephalexin capsules, cephalexin for oral suspension, and cephalexin tablets, should only be used to treat bacterial infections. They do not treat viral infections (e.g., the common cold). When cephalexin capsules, cephalexin for oral suspension, and cephalexin tablets are prescribed to treat a bacterial infection, tell patients that although it is common to feel better early in the course of therapy, the medication should be taken exactly as directed. Skipping doses or not completing the full course of therapy may (1) decrease the effectiveness of the immediate treatment and (2) increase the likelihood that bacteria will develop resistance and will not be treatable by cephalexin capsules, cephalexin for oral suspension, and cephalexin tablets or other antibacterial drugs in the future.

Teva Pharmaceuticals USA, Inc.

North Wales, PA 19454

Rev. U 1/2019

Package/Label Display Panel

N 0093-3145-01
3 5
333-32-100960

TEVA PHARMACEUTICALS USA, INC.
North Wales, PA 19454

Dispense in a tight, light-resistant container as defined in the USP, with a child-resistant closure (as required).
KEEP THIS AND ALL MEDICATIONS OUT OF THE REACH OF CHILDREN.

Rev. F 9/2015

Each capsule contains cephalexin monohydrate, USP equivalent to 250 mg cephalexin.

Usual Adult Dosage: One capsule every six hours. For more severe infections, dose may be increased, not to exceed 4 g a day. See literature.

Store at 20° to 25°C (68° to 77°F) [See USP Controlled Room Temperature].

NDC 0093-3145-01

Cephalexin Capsules USP 250 mg

Rx only

100 CAPSULES

TEVA

Cephalexin Capsules USP 250 mg 100s Label Text

NDC 0093-3145-01

Cephalexin

Capsules USP
250 mg
Rx only
100 CAPSULES
TEVA

Package/Label Display Panel



Cephalexin Capsules USP 500 mg 100s Label Text

NDC 0093-3147-01

Cephalexin
Capsules USP

500 mg

Rx only

100 CAPSULES

TEVA

Package/Label Display Panel



Cephalexin FOS USP 125 mg per 5 mL 100 mL Label Text

NDC 0093-4175-73

Cephalexin

for Oral Suspension, USP

125 mg per 5 mL

when reconstituted according to directions.

Usual Pediatric Dose: 25 to 50 mg per kg a day in four divided doses. For more severe infections, dose may be doubled. See accompanying literature.

Rx only

FOR ORAL USE ONLY

100 mL (when mixed)

TEVA

Package/Label Display Panel

NDC 0093-4177-73

Cephalexin
for Oral Suspension, USP
250 mg per 5 mL

when reconstituted according to directions.

Usual Pediatric Dose: 25 to 50 mg per kg a day in four divided doses. For more severe infections, dose may be doubled. See accompanying literature.

Rx only

FOR ORAL USE ONLY

100 mL (when mixed)

TEVA

IMPORTANT
 STORE RECONSTITUTED SUSPENSION IN REFRIGERATOR. MAY BE KEPT FOR 14 DAYS WITHOUT SIGNIFICANT LOSS OF POTENCY. DISCARD AFTER 14 DAYS.

Date of reconstitution:

SHAKE WELL BEFORE USING. KEEP TIGHTLY CLOSED.
 Oversized bottle provides extra space for shaking.

KEEP THIS AND ALL MEDICATIONS OUT OF THE REACH OF CHILDREN.

333-32-100986 Rev. 9/2015
TEVA PHARMACEUTICALS USA, INC.
 North Wales, PA 19454

Store dry powder at controlled room temperature, between 20° and 25°C (68° and 77°F) (see USP).
TO THE PHARMACIST: Directions for Mixing: Prepare suspension at time of dispensing. Add to the bottle a total of 71 mL of water. For ease in preparation, tap bottle to loosen powder, add the water in 2 portions, shaking well after each addition. The resulting suspension will contain cephalexin monohydrate, USP equivalent to 250 mg cephalexin in each 5 mL (teaspoonful).
 Contains cephalexin monohydrate, USP equivalent to 5 g cephalexin in a dry cherry mixed fruit flavored mixture.

N 0093-4177-73 2

 3

Cephalexin FOS USP 250 mg per 5 mL 100 mL Label Text

NDC 0093-4177-73

Cephalexin

for Oral Suspension, USP

250 mg per 5 mL

when reconstituted according to directions.

Usual Pediatric Dose: 25 to 50 mg per kg a day in four divided doses. For more severe infections, dose may be doubled. See accompanying literature.


Rx only

FOR ORAL USE ONLY

100 mL (when mixed)

TEVA

Package/Label Display Panel

 N 0093-2238-01 5

Each tablet contains cephalexin monohydrate, USP equivalent to 250 mg cephalexin.
Usual Adult Dosage: The dosage ranges from 1 to 4 g daily in divided doses. Parenteral cephalosporin therapy should be considered if daily doses higher than 4 g are required. See accompanying literature.

333-32-101070 Rev. H 9/2015

Coding Area

Store at 20° to 25°C (68° to 77°F) [See USP Controlled Room Temperature]. Dispense in a tight, light-resistant container as defined in the USP, with a child-resistant closure (as required). Keep tightly closed. **KEEP THIS AND ALL MEDICATIONS OUT OF THE REACH OF CHILDREN.**
 TEVA PHARMACEUTICALS USA, INC.
 North Wales, PA 19454

GTIN 00300932238015

NDC 0093-2238-01

Cephalexin
Tablets USP
250 mg

Rx only

100 TABLETS

TEVA

Cephalexin Tablets USP 250 mg 100s Label Text

NDC 0093-2238-01

Cephalexin

Tablets USP

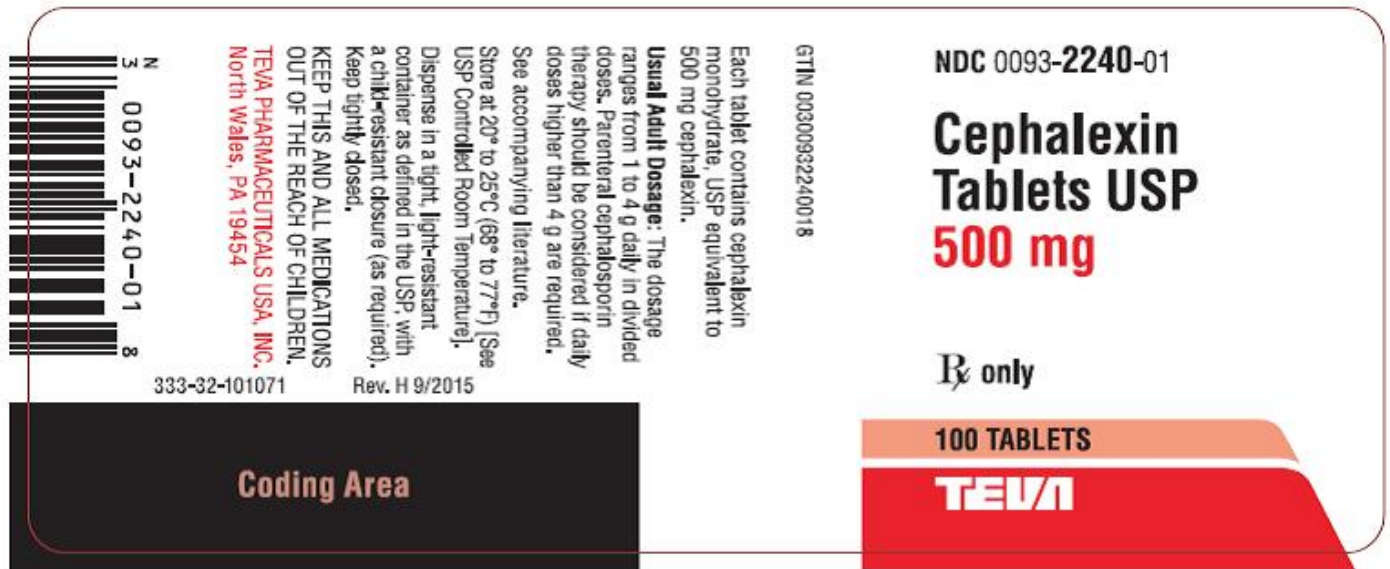
250 mg

Rx only

100 TABLETS

TEVA

Package/Label Display Panel



Cephalexin Tablets USP 500 mg 100s Label Text

NDC 0093-2240-01

Cephalexin

Tablets USP

500 mg

Rx only

100 TABLETS

TEVA

CEPHALEXIN

cephalexin capsule

Product Information

| | | | |
|--------------------------------|-------------------------|---------------------------|---------------|
| Product Type | HUMAN PRESCRIPTION DRUG | Item Code (Source) | NDC:0093-3145 |
| Route of Administration | ORAL | | |

Active Ingredient/Active Moiety

| Ingredient Name | Basis of Strength | Strength |
|--|----------------------|----------|
| CEPHALEXIN (UNII: OBN7UDS42Y) (CEPHALEXIN ANHYDROUS - UNII:5SFF1W6677) | CEPHALEXIN ANHYDROUS | 250 mg |

Inactive Ingredients

| Ingredient Name | Strength |
|--|----------|
| MAGNESIUM STEARATE (UNII: 70097M6I30) | |
| SILICON DIOXIDE (UNII: ETJ7Z6XBU4) | |
| SODIUM STARCH GLYCOLATE TYPE A POTATO (UNII: 5856J3G2A2) | |
| FERROSO FERRIC OXIDE (UNII: XM0M87F357) | |
| D&C YELLOW NO. 10 (UNII: 35SW5USQ3G) | |
| ALUMINUM OXIDE (UNII: LM26O6933) | |
| FD&C BLUE NO. 1 (UNII: HBR47K3TBD) | |
| FD&C BLUE NO. 2 (UNII: L06K8R7DQK) | |
| FD&C RED NO. 40 (UNII: WZB9127XOA) | |
| GELATIN (UNII: 2G86QN327L) | |
| CARBOXYMETHYLCELLULOSE SODIUM (UNII: K679OBS311) | |
| SODIUM LAURYL SULFATE (UNII: 368GB5141J) | |
| TITANIUM DIOXIDE (UNII: 15FIX9V2JP) | |
| PROPYLENE GLYCOL (UNII: 6DC9Q167V3) | |
| FERRIC OXIDE YELLOW (UNII: EX438O2MRT) | |

Product Characteristics

| | | | |
|----------|-------------------------------|--------------|-----------|
| Color | GRAY, ORANGE (swedish orange) | Score | no score |
| Shape | CAPSULE | Size | 18mm |
| Flavor | | Imprint Code | TEVA;3145 |
| Contains | | | |

Packaging

| # | Item Code | Package Description | Marketing Start Date | Marketing End Date |
|---|------------------|--|----------------------|--------------------|
| 1 | NDC:0093-3145-01 | 100 in 1 BOTTLE; Type 0: Not a Combination Product | 09/30/1990 | |
| 2 | NDC:0093-3145-05 | 500 in 1 BOTTLE; Type 0: Not a Combination Product | 09/30/1990 | |
| 3 | NDC:0093-3145-93 | 100 in 1 BOX | 06/16/2009 | 06/16/2009 |
| 3 | NDC:0093-3145-19 | 1 in 1 BLISTER PACK; Type 0: Not a Combination Product | | |



Marketing Information

| Marketing Category | Application Number or Monograph Citation | Marketing Start Date | Marketing End Date |
|--------------------|--|----------------------|--------------------|
| ANDA | ANDA062702 | 09/30/1990 | |

CEPHALEXIN

cephalexin capsule

Product Information

| | | | |
|-------------------------|-------------------------|--------------------|---------------|
| Product Type | HUMAN PRESCRIPTION DRUG | Item Code (Source) | NDC:0093-3147 |
| Route of Administration | ORAL | | |

Active Ingredient/Active Moiety

| Ingredient Name | Basis of Strength | Strength |
|--|----------------------|----------|
| CEPHALEXIN (UNII: OBN7UDS42Y) (CEPHALEXIN ANHYDROUS - UNII:5SFF1W6677) | CEPHALEXIN ANHYDROUS | 500 mg |

Inactive Ingredients

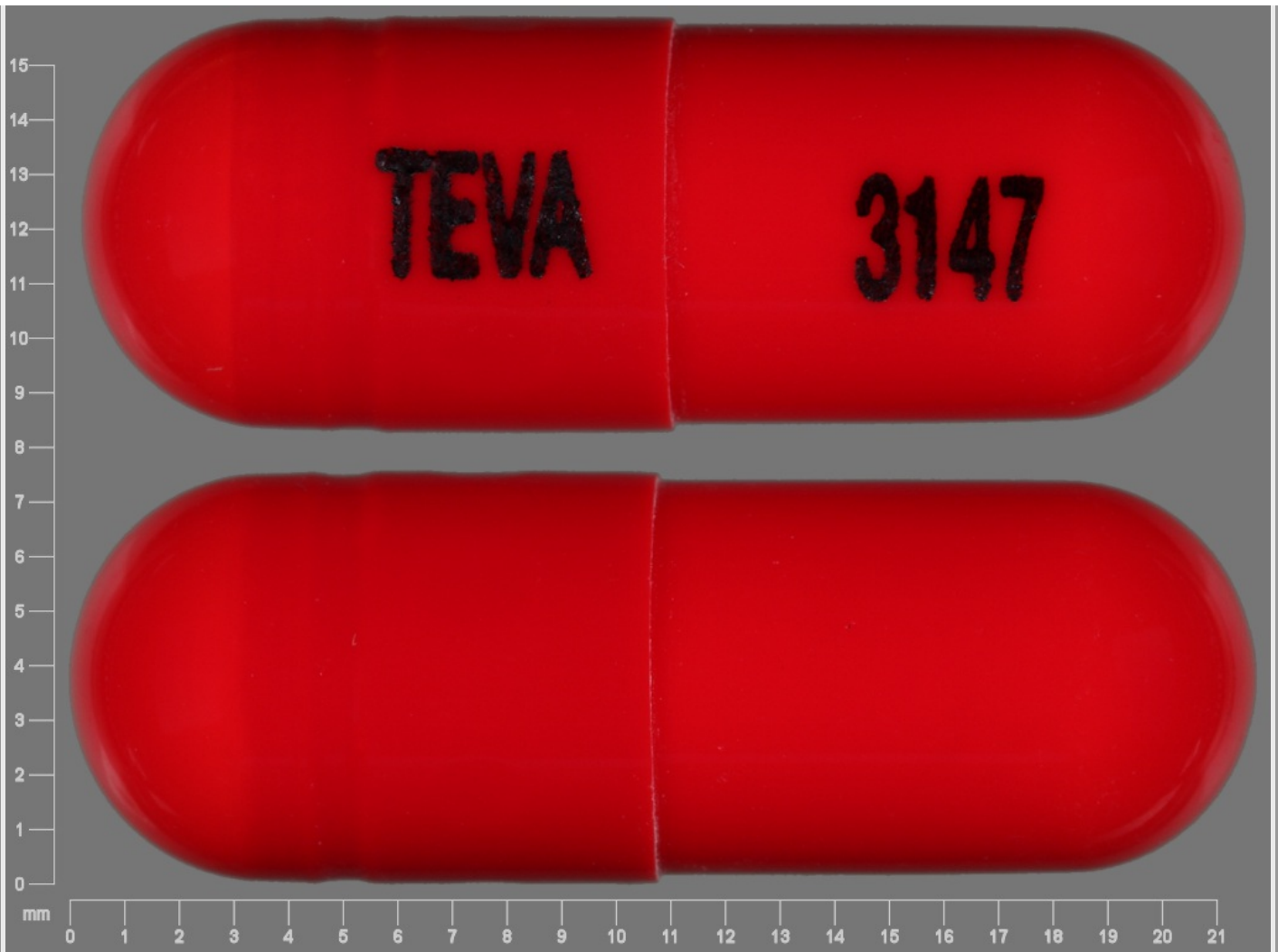
| Ingredient Name | Strength |
|--|----------|
| MAGNESIUM STEARATE (UNII: 70097M6I30) | |
| SILICON DIOXIDE (UNII: ETJ7Z6XBU4) | |
| SODIUM STARCH GLYCOLATE TYPE A POTATO (UNII: 5856J3G2A2) | |
| FERROSFERRIC OXIDE (UNII: XM0M87F357) | |
| D&C YELLOW NO. 10 (UNII: 35SW5USQ3G) | |
| ALUMINUM OXIDE (UNII: LM26O6933) | |
| FD&C BLUE NO. 1 (UNII: HBR47K3TBD) | |
| FD&C BLUE NO. 2 (UNII: L06K8R7DQK) | |
| FD&C RED NO. 40 (UNII: WZB9127XOA) | |
| GELATIN (UNII: 2G86QN327L) | |
| CARBOXYMETHYLCELLULOSE SODIUM (UNII: K679OBS311) | |
| SODIUM LAURYL SULFATE (UNII: 368GB5141J) | |
| TITANIUM DIOXIDE (UNII: 15FIX9V2JP) | |
| PROPYLENE GLYCOL (UNII: 6DC9Q167V3) | |

Product Characteristics

| | | | |
|----------|-------------------------|--------------|-----------|
| Color | ORANGE (swedish orange) | Score | no score |
| Shape | CAPSULE | Size | 22mm |
| Flavor | | Imprint Code | TEVA;3147 |
| Contains | | | |

Packaging

| # | Item Code | Package Description | Marketing Start Date | Marketing End Date |
|---|------------------|--|----------------------|--------------------|
| 1 | NDC:0093-3147-01 | 100 in 1 BOTTLE; Type 0: Not a Combination Product | 09/30/1990 | |
| 2 | NDC:0093-3147-05 | 500 in 1 BOTTLE; Type 0: Not a Combination Product | 09/30/1990 | |
| 3 | NDC:0093-3147-93 | 100 in 1 BOX | 06/16/2009 | 06/16/2009 |
| 3 | NDC:0093-3147-19 | 1 in 1 BLISTER PACK; Type 0: Not a Combination Product | | |



Marketing Information

| Marketing Category | Application Number or Monograph Citation | Marketing Start Date | Marketing End Date |
|--------------------|--|----------------------|--------------------|
| ANDA | ANDA062702 | 09/30/1990 | |

CEPHALEXIN

cephalexin powder, for suspension

Product Information

| | | | |
|-------------------------|-------------------------|--------------------|---------------|
| Product Type | HUMAN PRESCRIPTION DRUG | Item Code (Source) | NDC:0093-4175 |
| Route of Administration | ORAL | | |

Active Ingredient/Active Moiety

| Ingredient Name | Basis of Strength | Strength |
|--|----------------------|----------------|
| CEPHALEXIN (UNII: OBN7UDS42Y) (CEPHALEXIN ANHYDROUS - UNII:5SFF1W6677) | CEPHALEXIN ANHYDROUS | 125 mg in 5 mL |

Inactive Ingredients

| Ingredient Name | Strength |
|------------------------------------|----------|
| FD&C RED NO. 40 (UNII: WZB9127XOA) | |
| BENZYL ALCOHOL (UNII: LKG8494WBH) | |
| MALTODEXTRIN (UNII: 7CVR7L4A2D) | |
| STARCH, CORN (UNII: O8232NY3SJ) | |
| SILICON DIOXIDE (UNII: ETJ7Z6XBU4) | |
| SODIUM BENZOATE (UNII: OJ245FE5EU) | |
| SUCROSE (UNII: C151H8M554) | |
| XANTHAN GUM (UNII: TTV12P4NEE) | |

Product Characteristics

| | | | |
|----------|-----------------------------|--------------|--|
| Color | | Score | |
| Shape | | Size | |
| Flavor | CHERRY (cherry mixed fruit) | Imprint Code | |
| Contains | | | |

Packaging

| # | Item Code | Package Description | Marketing Start Date | Marketing End Date |
|---|------------------|---|----------------------|--------------------|
| 1 | NDC:0093-4175-73 | 100 mL in 1 BOTTLE; Type 0: Not a Combination Product | 09/30/1990 | |
| 2 | NDC:0093-4175-74 | 200 mL in 1 BOTTLE; Type 0: Not a Combination Product | 09/30/1990 | |

Marketing Information

| Marketing Category | Application Number or Monograph Citation | Marketing Start Date | Marketing End Date |
|--------------------|--|----------------------|--------------------|
| ANDA | ANDA062703 | 09/30/1990 | |

CEPHALEXIN

cephalexin powder, for suspension

Product Information

| | | | |
|-------------------------|-------------------------|--------------------|---------------|
| Product Type | HUMAN PRESCRIPTION DRUG | Item Code (Source) | NDC:0093-4177 |
| Route of Administration | ORAL | | |

Active Ingredient/Active Moiety

| Ingredient Name | Basis of Strength | Strength |
|--|----------------------|----------------|
| CEPHALEXIN (UNII: OBN7UDS42Y) (CEPHALEXIN ANHYDROUS - UNII:5SFF1W6677) | CEPHALEXIN ANHYDROUS | 250 mg in 5 mL |

Inactive Ingredients

| Ingredient Name | Strength |
|------------------------------------|----------|
| FD&C RED NO. 40 (UNII: WZB9127XOA) | |
| BENZYL ALCOHOL (UNII: LKG8494WBH) | |
| MALTODEXTRIN (UNII: 7CVR7L4A2D) | |

| | |
|------------------------------------|--|
| STARCH, CORN (UNII: O8232NY3SJ) | |
| SILICON DIOXIDE (UNII: ETJ7Z6XBU4) | |
| SODIUM BENZOATE (UNII: OJ245FE5EU) | |
| SUCROSE (UNII: C151H8M554) | |
| XANTHAN GUM (UNII: TTV12P4NEE) | |

Product Characteristics

| | | | |
|----------|-----------------------------|--------------|--|
| Color | | Score | |
| Shape | | Size | |
| Flavor | CHERRY (cherry mixed fruit) | Imprint Code | |
| Contains | | | |

Packaging

| # | Item Code | Package Description | Marketing Start Date | Marketing End Date |
|---|------------------|---|----------------------|--------------------|
| 1 | NDC:0093-4177-73 | 100 mL in 1 BOTTLE; Type 0: Not a Combination Product | 09/30/1990 | |
| 2 | NDC:0093-4177-74 | 200 mL in 1 BOTTLE; Type 0: Not a Combination Product | 09/30/1990 | |

Marketing Information

| Marketing Category | Application Number or Monograph Citation | Marketing Start Date | Marketing End Date |
|--------------------|--|----------------------|--------------------|
| ANDA | ANDA062703 | 09/30/1990 | |

CEPHALEXIN

cephalexin tablet

Product Information

| | | | |
|-------------------------|-------------------------|--------------------|---------------|
| Product Type | HUMAN PRESCRIPTION DRUG | Item Code (Source) | NDC:0093-2238 |
| Route of Administration | ORAL | | |

Active Ingredient/Active Moiety

| Ingredient Name | Basis of Strength | Strength |
|--|----------------------|----------|
| CEPHALEXIN (UNII: OBN7UDS42Y) (CEPHALEXIN ANHYDROUS - UNII:5SFF1W6677) | CEPHALEXIN ANHYDROUS | 250 mg |

Inactive Ingredients

| Ingredient Name | Strength |
|---|----------|
| HYPROMELLOSE 2910 (3 MP.A.S) (UNII: 0VUT3PMY82) | |
| HYPROMELLOSE 2910 (6 MP.A.S) (UNII: 0WZ8WG20P6) | |
| MAGNESIUM STEARATE (UNII: 70097M6I30) | |
| CELLULOSE, MICROCRYSTALLINE (UNII: OP1R32D61U) | |
| POLYETHYLENE GLYCOL 400 (UNII: B697894SGQ) | |
| POLYSORBATE 80 (UNII: 6OZP39ZG8H) | |

SODIUM STARCH GLYCOLATE TYPE A POTATO (UNII: 5856J3G2A2)

TITANIUM DIOXIDE (UNII: 15FIX9V2JP)

Product Characteristics

| | | | |
|-----------------|-----------------------|---------------------|------------|
| Color | WHITE | Score | 2 pieces |
| Shape | OVAL (capsule-shaped) | Size | 13mm |
| Flavor | | Imprint Code | 22;38;TEVA |
| Contains | | | |

Packaging

| # | Item Code | Package Description | Marketing Start Date | Marketing End Date |
|---|------------------|--|----------------------|--------------------|
| 1 | NDC:0093-2238-01 | 100 in 1 BOTTLE; Type 0: Not a Combination Product | 09/30/1990 | |



Marketing Information

| Marketing Category | Application Number or Monograph Citation | Marketing Start Date | Marketing End Date |
|--------------------|--|----------------------|--------------------|
| ANDA | ANDA063023 | 09/30/1990 | |

CEPHALEXIN

cephalexin tablet

Product Information

| | | | |
|-------------------------|-------------------------|--------------------|---------------|
| Product Type | HUMAN PRESCRIPTION DRUG | Item Code (Source) | NDC:0093-2240 |
| Route of Administration | ORAL | | |

Active Ingredient/Active Moiety

| Ingredient Name | Basis of Strength | Strength |
|--|----------------------|----------|
| CEPHALEXIN (UNII: OBN7UDS42Y) (CEPHALEXIN ANHYDROUS - UNII:5SFF1W6677) | CEPHALEXIN ANHYDROUS | 500 mg |

Inactive Ingredients

| Ingredient Name | Strength |
|--|----------|
| HYPROMELLOSE 2910 (3 MP.A.S) (UNII: 0VUT3PMY82) | |
| HYPROMELLOSE 2910 (6 MP.A.S) (UNII: 0WZ8WG20P6) | |
| MAGNESIUM STEARATE (UNII: 70097M6I30) | |
| CELLULOSE, MICROCRYSTALLINE (UNII: OP1R32D61U) | |
| POLYETHYLENE GLYCOL 400 (UNII: B697894SGQ) | |
| POLYSORBATE 80 (UNII: 6OZP39ZG8H) | |
| SODIUM STARCH GLYCOLATE TYPE A POTATO (UNII: 5856J3G2A2) | |
| TITANIUM DIOXIDE (UNII: 15FIX9V2JP) | |

Product Characteristics

| | | | |
|----------|-----------------------|--------------|------------|
| Color | WHITE | Score | 2 pieces |
| Shape | OVAL (capsule-shaped) | Size | 16mm |
| Flavor | | Imprint Code | 22;40;TEVA |
| Contains | | | |

Packaging

| # | Item Code | Package Description | Marketing Start Date | Marketing End Date |
|---|------------------|--|----------------------|--------------------|
| 1 | NDC:0093-2240-01 | 100 in 1 BOTTLE; Type 0: Not a Combination Product | 09/30/1990 | |



Marketing Information

| Marketing Category | Application Number or Monograph Citation | Marketing Start Date | Marketing End Date |
|--------------------|--|----------------------|--------------------|
| ANDA | ANDA063024 | 09/30/1990 | |

Labeler - Teva Pharmaceuticals USA, Inc. (001627975)

Revised: 1/2019

Teva Pharmaceuticals USA, Inc.