

**BUTALBITAL, ASPIRIN, AND CAFFEINE- butalbital, aspirin, and caffeine capsule**  
**Aidarex Pharmaceuticals LLC**

-----  
**Butalbital, Aspirin, and Caffeine Capsules, USP C-III**  
**Revised: June 2009**  
**Rx only**  
**1901100609**

**DESCRIPTION**

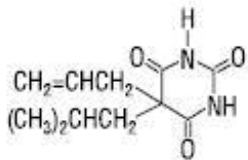
Butalbital, Aspirin, and Caffeine Capsules, USP is supplied in capsule form for oral administration. Each capsule contains the following active ingredients:

---

butalbital, USP . . . . .	50 mg
aspirin, USP . . . . .	325 mg
caffeine, USP . . . . .	40 mg

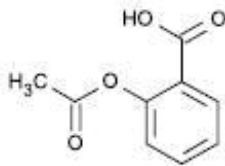
---

Butalbital (5-allyl-5-isobutylbarbituric acid) is a short- to intermediate-acting barbiturate. It has the following structural formula:



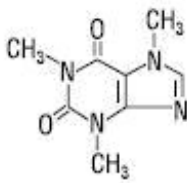
C<sub>11</sub>H<sub>16</sub>N<sub>2</sub>O<sub>3</sub>            molecular weight 224.26

Aspirin (benzoic acid, 2-(acetyloxy)-) is an analgesic, antipyretic, and anti-inflammatory. It has the following structural formula:



C<sub>9</sub>H<sub>8</sub>O<sub>4</sub>            molecular weight 180.16

Caffeine (1,3,7-trimethylxanthine) is a central nervous system stimulant. It has the following structural formula:



$C_8H_{10}N_4O_2$             molecular weight 194.19

*Inactive Ingredients:* microcrystalline cellulose, pregelatinized starch, and talc. Gelatin capsules contain D&C Yellow No. 10, FD&C Green No. 3, and gelatin. The capsules are printed with edible ink containing red iron oxide.

## CLINICAL PHARMACOLOGY

Pharmacologically, Butalbital, Aspirin, and Caffeine Capsules, USP combines the analgesic properties of aspirin with the anxiolytic and muscle relaxant properties of butalbital.

The clinical effectiveness of butalbital, aspirin, and caffeine capsules in tension headache has been established in double-blind, placebo-controlled, multi-clinic trials. A factorial design study compared butalbital, aspirin, and caffeine capsules with each of its major components. This study demonstrated that each component contributes to the efficacy of butalbital, aspirin, and caffeine capsules in the treatment of the target symptoms of tension headache (headache pain, psychic tension, and muscle contraction in the head, neck, and shoulder region). For each symptom and the symptom complex as a whole, butalbital, aspirin, and caffeine capsules was shown to have significantly superior clinical effects to either component alone.

## Pharmacokinetics

The behavior of the individual components is described below.

### *Aspirin*

The systemic availability of aspirin after an oral dose is highly dependent on the dosage form, the presence of food, the gastric emptying time, gastric pH, antacids, buffering agents, and particle size. These factors affect not necessarily the extent of absorption of total salicylates but more the stability of aspirin prior to absorption.

During the absorption process and after absorption, aspirin is mainly hydrolyzed to salicylic acid and distributed to all body tissues and fluids, including fetal tissues, breast milk, and the central nervous system (CNS). Highest concentrations are found in plasma, liver, renal cortex, heart, and lung. In plasma, about 50%-80% of the salicylic acid and its metabolites are loosely bound to plasma proteins.

The clearance of total salicylates is subject to saturable kinetics; however, first-order elimination kinetics are still a good approximation for doses up to 650 mg. The plasma half-life for aspirin is about 12 minutes and for salicylic acid and/or total salicylates is about 3 hours.

The elimination of therapeutic doses is through the kidneys either as salicylic acid or other biotransformation products. The renal clearance is greatly augmented by an alkaline urine as is produced by concurrent administration of sodium bicarbonate or potassium citrate.

The biotransformation of aspirin occurs primarily in the hepatocytes. The major metabolites are salicyluric acid (75%), the phenolic and acyl glucuronides of salicylate (15%), and gentisic and gentisuric acid (1%). The bioavailability of the aspirin component of Butalbital, Aspirin, and Caffeine Capsules, USP is equivalent to that of a solution except for a slower rate of absorption. A peak concentration of 8.8 mcg/mL was obtained at 40 minutes after a 650 mg dose.

See **OVERDOSAGE** for toxicity information.

### ***Butalbital***

Butalbital is well absorbed from the gastrointestinal tract and is expected to distribute to most of the tissues in the body. Barbiturates, in general, may appear in breast milk and readily cross the placental barrier. They are bound to plasma and tissue proteins to a varying degree and binding increases directly as a function of lipid solubility.

Elimination of butalbital is primarily via the kidney (59%-88% of the dose) as unchanged drug or metabolites. The plasma half-life is about 35 hours. Urinary excretion products included parent drug (about 3.6% of the dose), 5-isobutyl-5-(2,3-dihydroxypropyl) barbituric acid (about 24% of the dose), 5-allyl-5(3-hydroxy-2-methyl-1-propyl) barbituric acid (about 4.8% of the dose), products with the barbituric acid ring hydrolyzed with excretion of urea (about 14% of the dose), as well as unidentified materials. Of the material excreted in the urine, 32% was conjugated.

The bioavailability of the butalbital component of Butalbital, Aspirin, and Caffeine Capsules, USP is equivalent to that of a solution except for a decrease in the rate of absorption. A peak concentration of 2,020 ng/mL is obtained at about 1.5 hours after a 100 mg dose.

The *in vitro* plasma protein binding of butalbital is 45% over the concentration range of 0.5-20 mcg/mL. This falls within the range of plasma protein binding (20%-45%) reported with other barbiturates such as phenobarbital, pentobarbital, and secobarbital sodium. The plasma-to-blood concentration ratio was almost unity indicating that there is no preferential distribution of butalbital into either plasma or blood cells.

See **OVERDOSAGE** for toxicity information.

### ***Caffeine***

Like most xanthines, caffeine is rapidly absorbed and distributed in all body tissues and fluids, including the CNS, fetal tissues, and breast milk.

Caffeine is cleared rapidly through metabolism and excretion in the urine. The plasma half-life is about 3 hours. Hepatic biotransformation prior to excretion results in about equal amounts of 1-methylxanthine and 1-methyluric acid. Of the 70% of the dose that has been recovered in the urine, only 3% was unchanged drug.

The bioavailability of the caffeine component for Butalbital, Aspirin, and Caffeine Capsules, USP is equivalent to that of a solution except for a slightly longer time to peak. A peak concentration of 1,660 ng/mL was obtained in less than an hour for an 80 mg dose.

See **OVERDOSAGE** for toxicity information.

## **INDICATIONS**

Butalbital, Aspirin, and Caffeine Capsules, USP is indicated for the relief of the symptom complex of tension (or muscle contraction) headache. Evidence supporting the efficacy and safety of Butalbital, Aspirin, and Caffeine Capsules, USP in the treatment of multiple recurrent headaches is unavailable. Caution in this regard is required because butalbital is habit-forming and potentially abusable.

## **CONTRAINDICATIONS**

Butalbital, Aspirin, and Caffeine Capsules, USP is contraindicated under the following conditions:

1. Hypersensitivity or intolerance to aspirin, caffeine, or butalbital.
2. Patients with a hemorrhagic diathesis (e.g., hemophilia, hypoprothrombinemia, von Willebrand's disease, the thrombocytopenias, thrombasthenia and other ill-defined hereditary platelet dysfunctions, severe vitamin K deficiency and severe liver damage).
3. Patients with the syndrome of nasal polyps, angioedema and bronchospastic reactivity to aspirin or other nonsteroidal anti-inflammatory drugs. Anaphylactoid reactions have occurred in such patients.
4. Peptic ulcer or other serious gastrointestinal lesions.

## 5. Patients with porphyria.

### **WARNINGS**

Therapeutic doses of aspirin can cause anaphylactic shock and other severe allergic reactions. It should be ascertained if the patient is allergic to aspirin, although a specific history of allergy may be lacking.

Significant bleeding can result from aspirin therapy in patients with peptic ulcer or other gastrointestinal lesions, and in patients with bleeding disorders. Aspirin administered preoperatively may prolong the bleeding time. Butalbital is habit-forming and potentially abusable. Consequently, the extended use of Butalbital, Aspirin, and Caffeine Capsules, USP is not recommended. Results from epidemiologic studies indicate an association between aspirin and Reye's Syndrome. Caution should be used in administering this product to children, including teenagers, with chicken pox or flu.

### **PRECAUTIONS**

#### **General**

Butalbital, Aspirin, and Caffeine Capsules, USP should be prescribed with caution for certain special-risk patients such as the elderly or debilitated, and those with severe impairment of renal or hepatic function, coagulation disorders, head injuries, elevated intracranial pressure, acute abdominal conditions, hypothyroidism, urethral stricture, Addison's disease, or prostatic hypertrophy.

Aspirin should be used with caution in patients on anticoagulant therapy and in patients with underlying hemostatic defects, and extreme caution in the presence of peptic ulcer.

Precautions should be taken when administering salicylates to persons with known allergies.

Hypersensitivity to aspirin is particularly likely in patients with nasal polyps, and relatively common in those with asthma.

#### **Information for Patients**

Patients should be informed that Butalbital, Aspirin, and Caffeine Capsules, USP contains aspirin and should not be taken by patients with an aspirin allergy.

Butalbital, Aspirin, and Caffeine Capsules, USP may impair the mental and/or physical abilities required for performance of potentially hazardous tasks such as driving a car or operating machinery. Such tasks should be avoided while taking Butalbital, Aspirin, and Caffeine Capsules, USP.

Alcohol and other CNS depressants may produce an additive CNS depression when taken with Butalbital, Aspirin, and Caffeine Capsules, USP and should be avoided.

Butalbital may be habit-forming. Patients should take the drug only for as long as it is prescribed, in the amounts prescribed, and no more frequently than prescribed.

#### **Laboratory Tests**

In patients with severe hepatic or renal disease, effects of therapy should be monitored with serial liver and/or renal function tests.

#### **Drug Interactions**

The CNS effects of butalbital may be enhanced by monoamine oxidase (MAO) inhibitors.

In patients receiving concomitant corticosteroids and chronic use of aspirin, withdrawal of corticosteroids may result in salicylism because corticosteroids enhance renal clearance of salicylates and their withdrawal is followed by return to normal rates of renal clearance.

Butalbital, Aspirin, and Caffeine Capsules, USP may enhance the effects of:

1. Oral anticoagulants, causing bleeding by inhibiting prothrombin formation in the liver and displacing

anticoagulants from plasma protein binding sites.

2. Oral antidiabetic agents and insulin, causing hypoglycemia by contributing an additive effect, if dosage of Butalbital, Aspirin, and Caffeine Capsules, USP exceeds maximum recommended daily dosage.
3. 6-mercaptopurine and methotrexate, causing bone marrow toxicity and blood dyscrasias by displacing these drugs from secondary binding sites, and, in the case of methotrexate, also reducing its excretion.
4. Non-steroidal anti-inflammatory agents, increasing the risk of peptic ulceration and bleeding by contributing additive effects.
5. Other narcotic analgesics, alcohol, general anesthetics, tranquilizers such as chlordiazepoxide, sedative-hypnotics, or other CNS depressants, causing increased CNS depression.

Butalbital, Aspirin, and Caffeine Capsules, USP may diminish the effects of:

Uricosuric agents such as probenecid and sulfinpyrazone, reducing their effectiveness in the treatment of gout. Aspirin competes with these agents for protein binding sites.

### **Drug/Laboratory Test Interactions**

**Aspirin:** Aspirin may interfere with the following laboratory determinations in blood: serum amylase, fasting blood glucose, cholesterol, protein, serum glutamic-oxaloacetic transaminase (SGOT), uric acid, prothrombin time and bleeding time. Aspirin may interfere with the following laboratory determinations in urine: glucose, 5-hydroxyindoleacetic acid, Gerhardt ketone, vanillylmandelic acid (VMA), uric acid, diacetic acid, and spectrophotometric detection of barbiturates.

### **Carcinogenesis, Mutagenesis, Impairment of Fertility**

Adequate long-term studies have been conducted in mice and rats with aspirin, alone or in combination with other drugs, in which no evidence of carcinogenesis was seen. No adequate studies have been conducted in animals to determine whether aspirin has a potential for mutagenesis or impairment of fertility. No adequate studies have been conducted in animals to determine whether butalbital has a potential for carcinogenesis, mutagenesis, or impairment of fertility.

### **Usage in Pregnancy**

#### ***Teratogenic Effects:***

**Pregnancy Category C.** Animal reproduction studies have not been conducted with Butalbital, Aspirin, and Caffeine Capsules, USP. It is also not known whether Butalbital, Aspirin, and Caffeine Capsules, USP can cause fetal harm when administered to a pregnant woman or can affect reproduction capacity. Butalbital, Aspirin, and Caffeine Capsules, USP should be given to a pregnant woman only when clearly needed.

#### ***Nonteratogenic Effects:***

Withdrawal seizures were reported in a two-day-old male infant whose mother had taken a butalbital-containing drug during the last 2 months of pregnancy. Butalbital was found in the infant's serum. The infant was given phenobarbital 5 mg/kg, which was tapered without further seizure or other withdrawal symptoms.

Studies of aspirin use in pregnant women have not shown that aspirin increases the risk of abnormalities when administered during the first trimester of pregnancy. In controlled studies involving 41,337 pregnant women and their offspring, there was no evidence that aspirin taken during pregnancy caused stillbirth, neonatal death or reduced birth weight. In controlled studies of 50,282 pregnant women and their offspring, aspirin administration in moderate and heavy doses during the first four lunar months of pregnancy showed no teratogenic effect.

Therapeutic doses of aspirin in pregnant women close to term may cause bleeding in mother, fetus, or neonate. During the last 6 months of pregnancy, regular use of aspirin in high doses may prolong pregnancy and delivery.

### **Labor and Delivery**

Ingestion of aspirin prior to delivery may prolong delivery or lead to bleeding in the mother or neonate.

### **Nursing Mothers**

Aspirin, caffeine, and barbiturates are excreted in breast milk in small amounts, but the significance of their effects on nursing infants is not known. Because of potential for serious adverse reactions in nursing infants from Butalbital, Aspirin, and Caffeine Capsules, USP, a decision should be made whether to discontinue nursing or to discontinue the drug, taking into account the importance of the drug to the mother.

### **Pediatric Use**

Safety and effectiveness in pediatric patients have not been established.

## **ADVERSE REACTIONS**

The most frequent adverse reactions are drowsiness and dizziness. Less frequent adverse reactions are lightheadedness and gastrointestinal disturbances including nausea, vomiting, and flatulence. A single incidence of bone marrow suppression has been reported with the use of butalbital, aspirin, and caffeine capsules. Several cases of dermatological reactions including toxic epidermal necrolysis and erythema multiforme have been reported.

## **DRUG ABUSE AND DEPENDENCE**

### **Controlled Substance**

Butalbital, Aspirin, and Caffeine Capsules, USP is controlled by the Drug Enforcement Administration and is classified under Schedule III.

### **Abuse and Dependence**

#### ***Butalbital***

***Barbiturates may be habit-forming:*** Tolerance, psychological dependence, and physical dependence may occur especially following prolonged use of high doses of barbiturates. The average daily dose for the barbiturate addict is usually about 1,500 mg. As tolerance to barbiturates develops, the amount needed to maintain the same level of intoxication increases; tolerance to a fatal dosage, however, does not increase more than two-fold. As this occurs, the margin between an intoxication dosage and fatal dosage becomes smaller. The lethal dose of a barbiturate is far less if alcohol is also ingested. Major withdrawal symptoms (convulsions and delirium) may occur within 16 hours and last up to 5 days after abrupt cessation of these drugs. Intensity of withdrawal symptoms gradually declines over a period of approximately 15 days. Treatment of barbiturate dependence consists of cautious and gradual withdrawal of the drug. Barbiturate-dependent patients can be withdrawn by using a number of different withdrawal regimens. One method involves initiating treatment at the patient's regular dosage level and gradually decreasing the daily dosage as tolerated by the patient.

## **OVERDOSAGE**

The toxic effects of acute overdosage of Butalbital, Aspirin, and Caffeine Capsules, USP are attributable mainly to its barbiturate component, and, to a lesser extent, aspirin. Because toxic effects of caffeine occur in very high dosages only, the possibility of significant caffeine toxicity from

Butalbital, Aspirin, and Caffeine Capsules, USP overdosage is unlikely.

## Signs and Symptoms

Symptoms attributable to **acute barbiturate poisoning** include drowsiness, confusion, and coma; respiratory depression; hypotension; hypovolemic shock. Symptoms attributable to **acute aspirin poisoning** include hyperpnea; acid-base disturbances with development of metabolic acidosis; vomiting and abdominal pain; tinnitus; hyperthermia; hypoprothrombinemia; restlessness; delirium; convulsions. **Acute caffeine poisoning** may cause insomnia, restlessness, tremor, and delirium; tachycardia and extrasystoles.

## Treatment

Treatment consists primarily of management of barbiturate intoxication and the correction of the acid-base imbalance due to salicylism. Vomiting should be induced mechanically or with emetics in the conscious patient. Gastric lavage may be used if the pharyngeal and laryngeal reflexes are present and if less than 4 hours have elapsed since ingestion. A cuffed endotracheal tube should be inserted before gastric lavage of the unconscious patient and when necessary to provide assisted respiration. Diuresis, alkalization of the urine, and correction of electrolyte disturbances should be accomplished through administration of intravenous fluids such as 1% sodium bicarbonate in 5% dextrose in water. Meticulous attention should be given to maintaining adequate pulmonary ventilation. The value of vasopressor agents such as Norepinephrine or Phenylephrine Hydrochloride in treating hypotension is questionable since they increase vasoconstriction and decrease blood flow. However, if prolonged support of blood pressure is required, Norepinephrine Bitartrate (Levophed<sup>®</sup>) may be given I.V. with the usual precautions and serial blood pressure monitoring. In severe cases of intoxication, peritoneal dialysis, hemodialysis, or exchange transfusion may be lifesaving. Hypoprothrombinemia should be treated with Vitamin K, intravenously.

Up-to-date information about the treatment of overdose can often be obtained from a Certified Regional Poison Control Center. Telephone numbers of Certified Regional Poison Control Centers are listed in the Physicians' Desk Reference<sup>®</sup>.

## Toxic and Lethal Doses (for adults)

- Butalbital:** toxic dose 1 g (20 capsules)
- Aspirin:** toxic blood level greater than 30 mg/100 mL; lethal dose 10-30 g
- Caffeine:** toxic dose 1 g (25 capsules)

## DOSAGE AND ADMINISTRATION

One or 2 capsules every 4 hours. Total daily dose should not exceed 6 capsules. Extended and repeated use of this product is not recommended because of the potential for physical dependence.

## HOW SUPPLIED

### Butalbital, Aspirin, and Caffeine Capsules, USP

Green cap with a yellow body. Cap is imprinted with "WATSON" in red. Body is imprinted with "3219" in red. Bottles of 30 are supplied with child-resistant closures.

### Store and Dispense

Below 25°C (77°F); tight container. Protect from moisture.

### Rx only

Address medical inquiries to:  
WATSON  
Medical Communications

P.O. Box 1953  
 Morristown, NJ 07962-1953  
 800-272-5525

**Watson Laboratories, Inc.**  
 Corona, CA 92880 USA

Repackaged By :  
 Aidarex Pharmaceuticals LLC,  
 Corona, CA 92880

Revised: June 2009

190110  
 S0609

**PRINCIPAL DISPLAY PANEL**

Butalbital, Aspirin, and Caffeine Capsules, USP  
 NDC 33261-0922-30  
 30 Capsule Count Bottle Label

CAUTION: FEDERAL LAW PROHIBITS DISPENSING WITHOUT PRESCRIPTION. SEE PACKAGE INSERT. KEEP OUT OF REACH OF CHILDREN. STORE AT CONTROLLED ROOM TEMP. 15-30C (59-86F)	Packaged and Distributed by: <b>AIDAREX PHARMACEUTICALS LLC.</b>		BUTAL/ASA/CAFF. 50/325/40mg NDC: 33261-0922-30 RX QLS0000 30	PEEL HERE INACTIVE
	<b>BUTAL./ASA/CAFF.</b>		BUTAL/ASA/CAFF. 50/325/40mg NDC: 33261-0922-30 RX QLS0000 30	LOG
	<b>50/325/40mg</b>		BUTAL/ASA/CAFF. 50/325/40mg NDC: 33261-0922-30 RX QLS0000 30	CHART
	<b>30 CAPS</b>		BUTAL/ASA/CAFF. 50/325/40mg NDC: 33261-0922-30 RX QLS0000 30	PEEL HERE BILL
EACH CAPSULE CONTAINS THE FOLLOWING ACTIVE INGREDIENTS: BUTALBITAL.....50 MG ASPIRIN.....325 MG CAFFEINE.....40 MG		GREEN & YELLOW OBLONG CAPSULE W/ WATSON 3 2 1 9 ON ONE SIDE		
GENERIC FOR : FIORINAL NDC: 33261-0922-30 TAKE _____ EVERY _____ HOURS _____ TIMES A DAY _____ T O M E _____ C A D A _____ H O R A S _____ V E G E S A L D I A		RX QLS0000		
MFG: WATSON LABORATORIES, INC. CORONA, CA 92880				

**BUTALBITAL, ASPIRIN, AND CAFFEINE**

butalbital, aspirin, and caffeine capsule

**Product Information**

<b>Product Type</b>	HUMAN PRESCRIPTION DRUG	<b>Item Code (Source)</b>	NDC:33261-922(NDC:0591-3219)
<b>Route of Administration</b>	ORAL	<b>DEA Schedule</b>	CIII

**Active Ingredient/Active Moiety**

Ingredient Name	Basis of Strength	Strength
BUTALBITAL (UNII: KHS0AZ4JVK) (BUTALBITAL - UNII:KHS0AZ4JVK)	BUTALBITAL	50 mg
ASPIRIN (UNII: R16CO5Y76E) (ASPIRIN - UNII:R16CO5Y76E)	ASPIRIN	325 mg
CAFFEINE (UNII: 3G6A5W338E) (CAFFEINE - UNII:3G6A5W338E)	CAFFEINE	40 mg



## Inactive Ingredients

Ingredient Name	Strength
CELLULOSE, MICROCRYSTALLINE (UNII: OP1R32D61U)	
STARCH, CORN (UNII: O8232NY3SJ)	
TALC (UNII: 7SEV7J4R1U)	
D&C YELLOW NO. 10 (UNII: 35SW5USQ3G)	
FD&C GREEN NO. 3 (UNII: 3P3ONR6O1S)	
GELATIN (UNII: 2G86QN327L)	
FERRIC OXIDE RED (UNII: 1K09F3G675)	

## Product Characteristics

Color	GREEN (GREEN) , YELLOW (YELLOW)	Score	no score
Shape	CAPSULE	Size	29mm
Flavor		Imprint Code	WATSON;3219
Contains			

## Packaging

#	Item Code	Package Description	Marketing Start Date	Marketing End Date
1	NDC:33261-922-30	30 in 1 BOTTLE, PLASTIC		

## Marketing Information

Marketing Category	Application Number or Monograph Citation	Marketing Start Date	Marketing End Date
NDA AUTHORIZED GENERIC	NDA017534	05/04/1976	

**Labeler** - Aidarex Pharmaceuticals LLC (801503249)

Revised: 12/2013

Aidarex Pharmaceuticals LLC