

# JAVYGTOR- sapropterin dihydrochloride powder, for solution

## Dr. Reddys Laboratories Inc

### HIGHLIGHTS OF PRESCRIBING INFORMATION

These highlights do not include all the information needed to use JAVYGTOR safely and effectively. See full prescribing information for JAVYGTOR .

**JAVYGTOR™ (sapropterin dihydrochloride) powder for oral solution.**  
**Initial U.S. Approval: 2007**

### RECENT MAJOR CHANGES

Warnings and Precautions Upper Gastrointestinal Mucosal Inflammation (5.2) 12/2019

### INDICATIONS AND USAGE

JAVYGTOR (sapropterin dihydrochloride) is a phenylalanine hydroxylase activator indicated to reduce blood phenylalanine (Phe) levels in adult and pediatric patients one month of age and older with hyperphenylalaninemia (HPA) due to tetrahydrobiopterin- (BH4-) responsive Phenylketonuria (PKU). JAVYGTOR is to be used in conjunction with a Phe-restricted diet. (1)

### DOSAGE AND ADMINISTRATION

All patients with PKU who are being treated with JAVYGTOR (sapropterin dihydrochloride) should also be treated with a Phe-restricted diet, including dietary protein and Phe restriction. (2.1)

#### Starting Dosage

- *Pediatric patients 1 month to 6 years:* The recommended starting dose of JAVYGTOR is 10 mg/kg taken once daily. (2.1)
- *Patients 7 years and older:* The recommended starting dose of JAVYGTOR is 10 to 20 mg/kg taken once daily. (2.1)

#### Dosage Adjustment

- Doses of JAVYGTOR powder for oral solution may be adjusted in the range of 5 to 20 mg/kg taken once daily. (2.1)
- Monitor blood Phe regularly, especially in pediatric patients. (2.1, 5.3)

#### Preparation and Administration

- Take with a meal. (2.2)
- Swallow oral solution after mixing powder in a small amount of soft foods or dissolving in recommended liquids. See full prescribing information for complete information on mixing with food or liquid. (2.2)

### DOSAGE FORMS AND STRENGTHS

- Powder for Oral Solution: 100 mg sapropterin dihydrochloride. (3)

### CONTRAINDICATIONS

None (4). (4)

### WARNINGS AND PRECAUTIONS

- Hypersensitivity reactions including anaphylaxis: JAVYGTOR (sapropterin dihydrochloride) is not recommended in patients with a history of anaphylaxis to sapropterin dihydrochloride; discontinue treatment in patients who experience anaphylaxis and initiate appropriate medical treatment. Continue dietary Phe restrictions. (5.1)
- Upper Gastrointestinal Mucosal Inflammation: Monitor patients for signs and symptoms of these conditions including esophagitis and gastritis. (5.2)
- Hypophenylalaninemia: Pediatric patients younger than 7 years treated with JAVYGTOR doses of 20 mg/kg per day are at increased risk for low levels of blood Phe compared with patients 7 years and older. (5.3)
- Monitoring Blood Phe Levels During Treatment: Ensure adequate blood Phe control and nutritional balance during treatment with JAVYGTOR. Frequent blood monitoring is recommended, especially in pediatric patients. (5.4, 2.1)
- Lack of Biochemical Response to JAVYGTOR Treatment: Response to JAVYGTOR treatment cannot be pre-determined by laboratory (e.g., molecular) testing and can only be determined by a therapeutic trial of JAVYGTOR. (5.5, 2.1)
- Interaction with Levodopa: Seizures, over-stimulation or irritability may occur; monitor patients for a change in neurologic status. (5.6, 7)
- Hyperactivity: Monitor patients for hyperactivity. (5.7)

## ADVERSE REACTIONS

Most common adverse reactions ( $\geq 4\%$ ) are: headache, rhinorrhea, pharyngolaryngeal pain, diarrhea, vomiting, cough, and nasal congestion (6.1).

To report SUSPECTED ADVERSE REACTIONS, contact Dr. Reddy's Laboratories, Inc. at 1-888-375-3784 or FDA at 1-800-FDA-1088 or [www.fda.gov/medwatch](http://www.fda.gov/medwatch).

## DRUG INTERACTIONS

- Inhibitors of Folate Synthesis (e.g., methotrexate, valproic acid, phenobarbital, trimethoprim): Can decrease endogenous BH<sub>4</sub> levels; monitor blood Phe levels more frequently and adjust JAVYGTOR dosage as needed. (7)
- Drugs Affecting Nitric Oxide-Mediated Vasorelaxation (e.g., PDE-5 inhibitors): Potential for vasorelaxation; monitor blood pressure. (7)

See 17 for PATIENT COUNSELING INFORMATION and FDA-approved patient labeling.

Revised: 1/2022

---

## FULL PRESCRIBING INFORMATION: CONTENTS\*

### 1 INDICATIONS AND USAGE

### 2 DOSAGE AND ADMINISTRATION

#### 2.1 Dosage

#### 2.2 Preparation and Administration Instructions

### 3 DOSAGE FORMS AND STRENGTHS

### 4 CONTRAINDICATIONS

### 5 WARNINGS AND PRECAUTIONS

#### 5.1 Hypersensitivity Reactions Including Anaphylaxis

#### 5.2 Upper Gastrointestinal Mucosal Inflammation

#### 5.3 Hypophenylalaninemia

#### 5.4 Monitoring Blood Phe Levels During Treatment

#### 5.5 Lack of Biochemical Response to JAVYGTOR

#### 5.6 Interaction with Levodopa

#### 5.7 Hyperactivity

### 6 ADVERSE REACTIONS

#### 6.1 Clinical Trials Experience

#### 6.2 Postmarketing Experience

### 7 DRUG INTERACTIONS

### 8 USE IN SPECIFIC POPULATIONS

#### 8.1 Pregnancy

#### 8.2 Lactation

#### 8.4 Pediatric Use

#### 8.5 Geriatric Use

### 10 OVERDOSAGE

### 11 DESCRIPTION

### 12 CLINICAL PHARMACOLOGY

#### 12.1 Mechanism of Action

#### 12.2 Pharmacodynamics

#### 12.3 Pharmacokinetics

### 13 NONCLINICAL TOXICOLOGY

#### 13.1 Carcinogenesis, Mutagenesis, Impairment of Fertility

### 14 CLINICAL STUDIES

### 16 HOW SUPPLIED/STORAGE AND HANDLING

### 17 PATIENT COUNSELING INFORMATION

\* Sections or subsections omitted from the full prescribing information are not listed.

---

## **FULL PRESCRIBING INFORMATION**

### **1 INDICATIONS AND USAGE**

JAVYGTOR (sapropterin dihydrochloride) is indicated to reduce blood phenylalanine (Phe) levels in adult and pediatric patients one month of age and older with hyperphenylalaninemia (HPA) due to tetrahydrobiopterin-(BH<sub>4</sub>-) responsive Phenylketonuria (PKU). JAVYGTOR is to be used in conjunction with a Phe-restricted diet.

### **2 DOSAGE AND ADMINISTRATION**

#### **2.1 Dosage**

Treatment with JAVYGTOR should be directed by physicians knowledgeable in the management of PKU.

All patients with PKU who are being treated with JAVYGTOR should also be treated with a Phe-restricted diet, including dietary protein and Phe restriction.

#### Starting Dosage

*Pediatric Patients 1 month to 6 years:* The recommended starting dose of JAVYGTOR is 10 mg/kg taken once daily.

*Patients 7 years and older:* The recommended starting dose of JAVYGTOR is 10 to 20 mg/kg taken once daily.

#### Dosage Adjustment (Evaluation Period)

Existing dietary protein and Phe intake should not be modified during the evaluation period.

If a 10 mg/kg per day starting dose is used, then response to therapy is determined by change in blood Phe following treatment with JAVYGTOR at 10 mg/kg per day for a period of up to 1 month. Blood Phe levels should be checked after 1 week of JAVYGTOR treatment and periodically for up to a month. If blood Phe does not decrease from baseline at 10 mg/kg per day, the dose may be increased to 20 mg/kg per day. Patients whose blood Phe does not decrease after 1 month of treatment at 20 mg/kg per day do not show a biochemical response and treatment with JAVYGTOR should be discontinued in these patients.

If a 20 mg/kg per day starting dose is used, then response to therapy is determined by change in blood Phe following treatment with JAVYGTOR at 20 mg/kg per day for a period of 1 month. Blood Phe levels should be checked after 1 week of JAVYGTOR treatment and periodically during the first month. Treatment should be discontinued in patients who do not show a biochemical response (blood Phe does not decrease) after 1 month of treatment at 20 mg/kg per day [see *Warnings and Precautions (5.4)*].

Once responsiveness to JAVYGTOR has been established, the dosage may be adjusted within the range of 5 to 20 mg/kg per day according to biochemical response to therapy

(blood Phe). Periodic blood Phe monitoring is recommended to assess blood Phe control, especially in pediatric patients [see *Warnings and Precautions (5.3)*].

## 2.2 Preparation and Administration Instructions

Take JAVYGTOR orally with a meal, preferably at the same time each day [see *Clinical Pharmacology (12.3)*]. A missed dose should be taken as soon as possible, but two doses should not be taken on the same day.

### JAVYGTOR (sapropterin Dihydrochloride) Powder for Oral Solution

#### *Patients weighing greater than 10 kg*

JAVYGTOR powder for oral solution should be dissolved in 120 to 240 mL of water or apple juice and taken orally within 30 minutes of dissolution. JAVYGTOR powder for oral solution may also be stirred in a small amount of soft foods such as apple sauce or pudding. Empty the contents of the packet(s) in water, apple juice, or a small amount of soft foods and mix thoroughly. The powder should dissolve completely.

#### *Patients weighing 10 kg or less (use 100 mg packets)*

For infants weighing 10 kg or less, JAVYGTOR powder for oral solution can be dissolved in as little as 5 mL of water or apple juice and a portion of this solution corresponding to a 10 mg/kg dose may be administered orally via an oral dosing syringe. Table 1 provides dosing information for infants at the recommended starting dose of 10 mg/kg per day. Refer to Table 2 for dosing information at 20 mg/kg per day if dosage adjustment is needed.

**Table 1: 10 mg/kg per day Dosing Table for Infants Weighing 10 kg or less**

Patient Weight (kg)	Starting Dose: 10 mg/kg per day*			
	Dose (mg)	JAVYGTOR Powder for Oral Solution 100 mg Packets Dissolved <sup>†</sup>	Dilution Volume (mL) <sup>‡</sup>	Administered Dose volume (mL) <sup>§</sup>
1	10	1	10	1
2	20	1	10	2
3	30	1	10	3
4	40	1	10	4
5	50	1	10	5
6	60	1	5	3
7	70	1	5	3.5
8	80	1	5	4
9	90	1	5	4.5
10	100	1	5	5

\*Starting dose for infants is 10 mg/kg per day. Dosing information for 20 mg/kg per day is provided in Table 2.

<sup>†</sup> Powder for oral solution provided in single use packets containing 100 mg sapropterin dihydrochloride powder per packet

<sup>‡</sup> Volume of water or apple juice to dissolve JAVYGTOR Powder for Oral Solution.

§ Discard remainder of mixture after volume to be administered is drawn.

**Table 2: 20 mg/kg per day Dosing Table for Infants Weighing 10 kg or less**

Patient Weight (kg)	20 mg/kg per day			
	Dose (mg)	JAVYGTOR Powder for Oral Solution 100 mg Packets* Dissolved	Dilution Volume (mL) <sup>†</sup>	Administered Dose volume (mL) <sup>§</sup>
1	20	1	5	1
2	40	1	5	2
3	60	1	5	3
4	80	1	5	4
5	100	1	5	5
6	120	2	5	3
7	140	2	5	3.5
8	160	2	5	4
9	180	2	5	4.5
10	200	2	5	5

\*Powder for oral solution provided in single use packets containing 100 mg sapropterin dihydrochloride powder per packet

<sup>†</sup>Volume of water or apple juice to dissolve JAVYGTOR Powder for Oral Solution.

§ Discard remainder of mixture after volume to be administered is drawn.

### 3 DOSAGE FORMS AND STRENGTHS

JAVYGTOR powder for oral solution is available as a unit dose packet containing 100 mg of sapropterin dihydrochloride (equivalent to 76.8 mg of sapropterin base). The powder is off white to pale yellow powder.

### 4 CONTRAINDICATIONS

None.

### 5 WARNINGS AND PRECAUTIONS

#### 5.1 Hypersensitivity Reactions Including Anaphylaxis

JAVYGTOR is not recommended in patients with a history of anaphylaxis to sapropterin dihydrochloride. Hypersensitivity reactions, including anaphylaxis and rash, have occurred [see *Adverse Reactions* ( 6.2 )]. Signs of anaphylaxis include wheezing, dyspnea, coughing, hypotension, flushing, nausea, and rash. Discontinue treatment with JAVYGTOR in patients who experience anaphylaxis and initiate appropriate medical treatment. Continue dietary protein and Phe restriction in patients who experience anaphylaxis.

## 5.2 Upper Gastrointestinal Mucosal Inflammation

Gastrointestinal (GI) adverse reactions suggestive of upper GI mucosal inflammation have been reported with sapropterin dihydrochloride. Serious adverse reactions included esophagitis and gastritis [see *Adverse Reactions* (6.2)]. If left untreated, these could lead to severe sequelae including esophageal stricture, esophageal ulcer, gastric ulcer, and bleeding and such complications have been reported in patients receiving JAVYGTOR powder for oral solution. Monitor patients for signs and symptoms of upper GI mucosal inflammation.

## 5.3 Hypophenylalaninemia

In clinical trials of sapropterin dihydrochloride, some PKU patients experienced hypophenylalaninemia (low blood Phe) during treatment with sapropterin dihydrochloride. In a clinical study of pediatric patients younger than 7 years old treated with sapropterin dihydrochloride 20 mg/kg per day, the incidence of hypophenylalaninemia was higher than in clinical trials of older patients [see *Adverse Reactions* (6.1)].

## 5.4 Monitoring Blood Phe Levels During Treatment

Prolonged elevations of blood Phe levels in patients with PKU can result in severe neurologic damage, including severe intellectual disability, developmental delay, microcephaly, delayed speech, seizures, and behavioral abnormalities. Conversely, prolonged levels of blood Phe that are too low have been associated with catabolism and endogenous protein breakdown, which has been associated with adverse developmental outcomes. Active management of dietary Phe intake while taking JAVYGTOR powder for oral solution is required to ensure adequate Phe control and nutritional balance. Monitor blood Phe levels during treatment to ensure adequate blood Phe level control. Frequent blood monitoring is recommended in the pediatric population [see *Dosage and Administration* (2.1)].

## 5.5 Lack of Biochemical Response to JAVYGTOR

Some patients with PKU do not show biochemical response (reduction in blood Phe) with treatment with JAVYGTOR. In two clinical trials at a sapropterin dihydrochloride dose of 20 mg/kg per day, 56% to 75% of pediatric PKU patients showed a biochemical response to sapropterin dihydrochloride, and in one clinical trial at a dose of 10 mg/kg per day, 20% of adult and pediatric PKU patients showed a biochemical response to sapropterin dihydrochloride [see *Clinical Studies* (14)].

Biochemical response to JAVYGTOR treatment cannot generally be pre-determined by laboratory testing (e.g., molecular testing), and should be determined through a therapeutic trial (evaluation) of sapropterin dihydrochloride response [see *Dosage and Administration* (2.1)].

## 5.6 Interaction with Levodopa

In a 10-year post-marketing safety surveillance program for a non-PKU indication using another sapropterin product, 3 patients with underlying neurological disorders experienced seizures, exacerbation of seizures, over-stimulation, and irritability during co-administration of levodopa and sapropterin. Monitor patients who are receiving levodopa for changes in neurological status during treatment with sapropterin dihydrochloride [see *Drug Interactions* (7)].

## 5.7 Hyperactivity

In the sapropterin dihydrochloride post-marketing safety surveillance program, 2 patients with PKU experienced hyperactivity when treated with sapropterin dihydrochloride [see *Adverse Reactions (6.2)*]. Monitor patients for hyperactivity.

## 6 ADVERSE REACTIONS

### 6.1 Clinical Trials Experience

Because clinical trials are conducted under widely varying conditions, adverse reaction rates observed in the clinical trials of a drug cannot be directly compared to the rates in the clinical trials of another drug and may not reflect the rates observed in clinical practice.

#### PKU Clinical Studies

The safety of sapropterin dihydrochloride was evaluated in 7 clinical studies in patients with PKU (aged 1 month to 50 years) [see *Clinical Studies (14)*].

In Studies 1 to 4 (controlled and uncontrolled studies), 579 patients with PKU aged 4 to 49 years received sapropterin dihydrochloride in doses ranging from 5 to 20 mg/kg per day, for lengths of treatment ranging from 1 to 164 weeks. The patient population was evenly distributed in gender, and approximately 95% of patients were Caucasian. The most common adverse reactions ( $\geq 4\%$  of patients) were headache, rhinorrhea, pharyngolaryngeal pain, diarrhea, vomiting, cough, and nasal congestion.

The data described in Table 3 reflect exposure of 74 patients with PKU to sapropterin dihydrochloride at doses of 10 to 20 mg/kg per day for 6 to 10 weeks in two double-blind, placebo-controlled clinical trials (Studies 2 and 4).

Table 3 enumerates adverse reactions occurring in at least 4% of patients treated with sapropterin dihydrochloride in the double-blind, placebo-controlled clinical trials described above.

**Table 3: Summary of Adverse Reactions Occurring in  $\geq 4\%$  of Patients in Placebo-Controlled Clinical Studies with Sapropterin Dihydrochloride**

MedDRA Preferred Term	Treatment	
	Sapropterin Dihydrochloride (N = 74)	Placebo (N = 59)
	No. Patients (%)	No. Patients (%)
Headache	11 (15)	8 (14)
Rhinorrhea	8 (11)	0
Pharyngolaryngeal pain	7 (10)	1 (2)
Diarrhea	6 (8)	3 (5)
Vomiting	6 (8)	4 (7)
Cough	5 (7)	3 (5)
Nasal congestion	3 (4)	0

In open-label, uncontrolled clinical trials (Studies 1 and 3) all patients received sapropterin dihydrochloride in doses of 5 to 20 mg/kg per day, and adverse reactions

were similar in type and frequency to those reported in the double-blind, placebo-controlled clinical trials [see *Clinical Studies (14)*].

In Study 5, 65 pediatric patients with PKU aged 1 month to 6 years received sapropterin dihydrochloride 20 mg/kg per day for 6 months. Adverse reactions in these patients were similar in frequency and type as those seen in other sapropterin dihydrochloride clinical trials except for an increased incidence of low Phe levels. Twenty-five percent (16 out of 65) of patients developed Phe levels below normal for age [see *Warnings and Precautions (5.3)*, *Pediatric Use (8.4)*, and *Clinical Studies (14)*].

In Study 6, a long term, open-label, extension study of 111 patients aged 4 to 50 years, receiving sapropterin dihydrochloride in doses ranging from 5 to 20 mg/kg per day, adverse reactions were similar in type and frequency to those reported in the previous clinical studies. Fifty-five patients received sapropterin dihydrochloride both as dissolved and intact tablets. There were no notable differences in the incidence or severity of adverse reactions between the two methods of administration. The mean ( $\pm$  SD) exposure to sapropterin dihydrochloride for the entire study population was  $659 \pm 221$  days (maximum 953 days).

In Study 7, 27 pediatric patients with PKU aged 0 to 4 years received sapropterin dihydrochloride 10 mg/kg per day or 20 mg/kg per day. Adverse reactions were similar in type and frequency to those observed in other clinical trials, with the addition of rhinitis, which was reported in 2 subjects (7.4%).

#### Safety Experience From Clinical Studies for Non-PKU Indications

Approximately 800 healthy subjects and patients with disorders other than PKU, some of whom had underlying neurologic disorders or cardiovascular disease, have been administered a different formulation of the same active ingredient (sapropterin) in approximately 19 controlled and uncontrolled clinical trials. In these clinical trials, subjects were administered sapropterin at doses ranging from 1 to 100 mg/kg per day for lengths of exposure from 1 day to 2 years. Serious and severe adverse reactions (regardless of causality) during sapropterin administration were seizures, exacerbation of seizures [see *Warnings and Precautions (5.3)*], dizziness, gastrointestinal bleeding, post-procedural bleeding, headache, irritability, myocardial infarction, overstimulation, and respiratory failure. Common adverse reactions were headache, peripheral edema, arthralgia, polyuria, agitation, dizziness, nausea, pharyngitis, abdominal pain, upper abdominal pain, and upper respiratory tract infection.

## **6.2 Postmarketing Experience**

The following adverse reactions have been reported during post-approval use of sapropterin dihydrochloride. Because these reactions are reported voluntarily from a population of uncertain size, it is not always possible to reliably estimate their frequency or establish a causal relationship to drug exposure.

*Hypersensitivity reactions including anaphylaxis and rash:* Most hypersensitivity reactions occurred within several days of initiating treatment [see *Warnings and Precautions (5.1)*].

*Gastrointestinal reactions:* esophagitis, gastritis, oropharyngeal pain, pharyngitis, esophageal pain, abdominal pain, dyspepsia, nausea, and vomiting [see *Warnings and Precautions (5.2)*].

*Hyperactivity:* Two cases have been reported. In one case, the patient received an accidental overdose of sapropterin dihydrochloride [see *Warnings and Precautions*



(5.6), Overdosage (10)].

## 7 DRUG INTERACTIONS

Table 4 includes drugs with clinically important drug interactions when administered with sapropterin dihydrochloride and instructions for preventing or managing them.

**Table 4: Clinically Relevant Drug Interactions**

Levodopa	
<i>Clinical Impact</i>	Sapropterin dihydrochloride may increase the availability of tyrosine, a precursor of levodopa. Neurologic events were reported post-marketing in patients receiving sapropterin and levodopa concomitantly for a non-PKU indication [see <i>Warnings and Precautions (5.5)</i> ]
<i>Intervention</i>	Monitor patients for a change in neurologic status.
Inhibitors of Folate Synthesis (e.g., methotrexate, valproic acid, phenobarbital, trimethoprim)	
<i>Clinical Impact</i>	<i>In vitro</i> and <i>in vivo</i> nonclinical data suggest that drugs that inhibit folate synthesis may decrease the bioavailability of endogenous BH4 by inhibiting the enzyme dihydrofolate reductase, which is involved in the recycling (regeneration) of BH4. This reduction in net BH4 levels may increase Phe levels.
<i>Intervention</i>	Consider monitoring blood Phe levels more frequently during concomitant administration. An increased dosage of sapropterin dihydrochloride may be necessary to achieve a biochemical response.
Drugs Affecting Nitric Oxide-Mediated Vasorelaxation (e.g., PDE-5 inhibitors such as sildenafil, vardenafil, or tadalafil)	
<i>Clinical Impact</i>	Both sapropterin dihydrochloride and PDE-5 inhibitors may induce vasorelaxation. A reduction in blood pressure could occur; however, the combined use of these medications has not been evaluated in humans.
<i>Intervention</i>	Monitor blood pressure.

## 8 USE IN SPECIFIC POPULATIONS

### 8.1 Pregnancy

#### Risk Summary

An embryo-fetal development study with sapropterin dihydrochloride in rats using oral doses up to 3 times the maximum recommended human dose (MRHD) given during the period of organogenesis showed no effects. In a rabbit study using oral administration of sapropterin dihydrochloride during the period of organogenesis, a rare defect, holoprosencephaly, was noted at 10 times the MRHD.

All pregnancies have a background risk of major birth defects, pregnancy loss, or other adverse pregnancy outcomes. In the U.S. general population, the estimated background risk of major birth defects and miscarriage in clinically recognized pregnancies is 2 to 4%

and 15 to 20%, respectively. The estimated background risk of major birth defects and miscarriage in pregnant women with PKU who maintain blood phenylalanine concentrations greater than 600 micromol/L during pregnancy is greater than the corresponding background risk for pregnant women without PKU.

### Clinical Considerations

#### *Disease-associated maternal and/or embryofetal risk*

Uncontrolled blood phenylalanine concentrations before and during pregnancy are associated with an increased risk of adverse pregnancy outcomes and fetal adverse effects. To reduce the risk of hyperphenylalaninemia-induced fetal adverse effects, blood phenylalanine concentrations should be maintained between 120 and 360 micromol/L during pregnancy and during the 3 months before conception [see *Dosage and Administration (2.1)*].

### Data

#### *Human Data*

##### *Uncontrolled Maternal PKU*

Available data from the Maternal Phenylketonuria Collaborative Study on 468 pregnancies and 331 live births in PKU-affected women demonstrated that uncontrolled Phe levels above 600 micromol/L are associated with a very high incidence of neurological, cardiac, facial dysmorphism, and growth anomalies. Control of blood phenylalanine during pregnancy is essential to reduce the incidence of Phe-induced teratogenic effects.

#### *Animal Data*

No effects on embryo-fetal development were observed in a reproduction study in rats using oral doses of up to 400 mg/kg per day sapropterin dihydrochloride (about 3 times the MRHD of 20 mg/kg per day, based on body surface area) administered during the period of organogenesis. However, in a rabbit reproduction study, oral administration of a maximum dose of 600 mg/kg per day (about 10 times the MRHD, based on body surface area) during the period of organogenesis was associated with a non-statistically significant increase in the incidence of holoprosencephaly in two high dose-treated litters (4 fetuses), compared to one control-treated litter (1 fetus).

## **8.2 Lactation**

### Risk Summary

There are insufficient data to assess the presence of sapropterin in human milk and no data on the effects on milk production. In postmarketing pregnancy registries, a total of 16 women from both registries were identified as breastfeeding for a mean of 3.5 months. No lactation-related safety concerns were reported in infants of mothers nursing during maternal treatment with sapropterin dihydrochloride. Sapropterin is present in the milk of lactating rats following intravenous administration, but not following oral administration.

The developmental and health benefits of breastfeeding should be considered along with the mother's clinical need for sapropterin dihydrochloride and any potential adverse effects on the breastfed child from sapropterin dihydrochloride or from the underlying maternal condition.

## 8.4 Pediatric Use

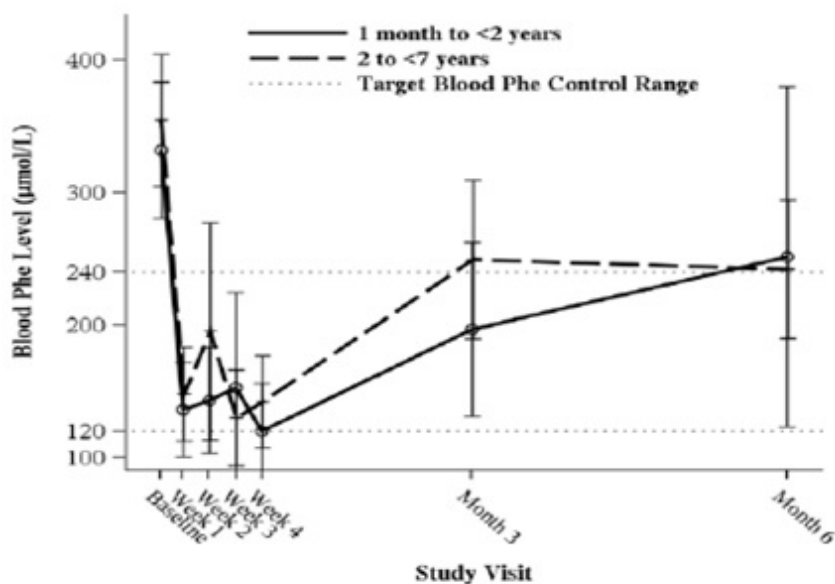
Pediatric patients with PKU, ages 1 month to 16 years, have been treated with sapropterin dihydrochloride in clinical trials [see *Clinical Studies (14)*].

The efficacy and safety of sapropterin dihydrochloride have not been established in neonates. The safety of sapropterin dihydrochloride has been established in children younger than 4 years in trials of 6 months duration and in children 4 years and older in trials of up to 3 years in length [see *Adverse Reactions (6.1)*].

In children aged 1 month and older, the efficacy of sapropterin dihydrochloride has been demonstrated in trials of 6 weeks or less in duration [see *Clinical Studies (14)*].

In a multicenter, open-label, single arm study, 57 patients aged 1 month to 6 years who were defined as sapropterin dihydrochloride responders after 4 weeks of sapropterin dihydrochloride treatment and Phe dietary restriction were treated for 6 months with sapropterin dihydrochloride at 20 mg/kg per day. The effectiveness of sapropterin dihydrochloride alone on reduction of blood Phe levels beyond 4 weeks could not be determined due to concurrent changes in dietary Phe intake during the study. Mean ( $\pm$ SD) blood Phe values over time for patients aged 1 month to <2 years and 2 to <7 years are shown in Figure 1.

**Figure 1: Mean Blood Phe Level Over Time by Age (years) (N=57)**



\*Error bars indicate 95% confidence interval.

## 8.5 Geriatric Use

Clinical studies of sapropterin dihydrochloride in patients with PKU did not include patients aged 65 years and older. It is not known whether these patients respond differently than younger patients.

## 10 OVERDOSAGE

Two unintentional overdosages with sapropterin dihydrochloride have been reported. One adult patient in a sapropterin dihydrochloride clinical trial received a single sapropterin dihydrochloride dose of 4,500 mg (36 mg/kg) instead of 2,600 mg (20 mg/kg). The patient reported mild headache and mild dizziness immediately after taking

the dose; both symptoms resolved within 1 hour with no treatment intervention. There were no associated laboratory test abnormalities. The patient suspended therapy for 24 hours and then restarted sapropterin dihydrochloride with no reports of abnormal signs or symptoms. In postmarketing, one pediatric patient received sapropterin dihydrochloride doses of 45 mg/kg per day instead of 20 mg/kg per day. The patient reported hyperactivity that began at an unspecified time after overdose and resolved after the sapropterin dihydrochloride dose was reduced to 20 mg/kg per day.

In a clinical study to evaluate the effects of sapropterin dihydrochloride on cardiac repolarization, a single supra-therapeutic dose of 100 mg/kg (5 times the maximum recommended dose) was administered to 54 healthy adults. No serious adverse reactions were reported during the study. The only adverse reactions reported in more than 1 subject who received the supra-therapeutic dose were upper abdominal pain (6%) and dizziness (4%). A dose-dependent shortening of the QT interval was observed [see *Clinical Pharmacology* ( 12.2 )].

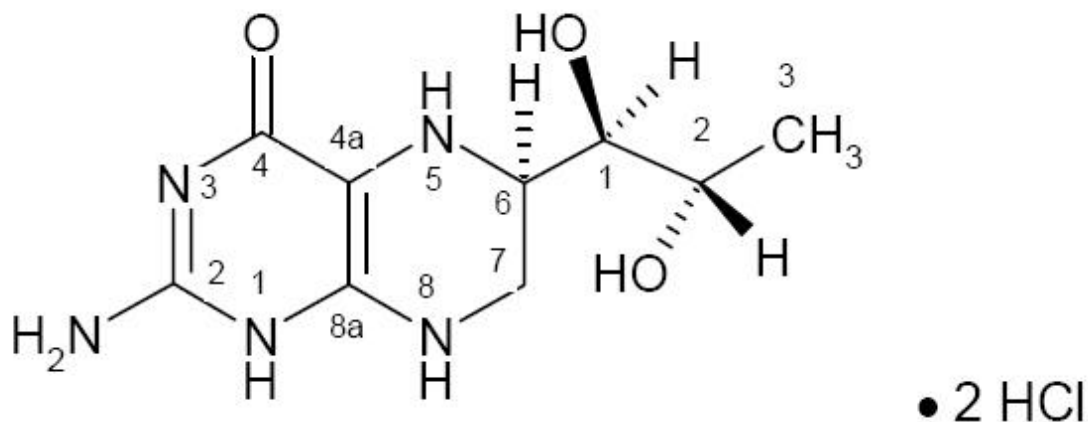
Patients should be advised to notify their physicians in cases of overdose.

## 11 DESCRIPTION

JAVYGTOR (sapropterin dihydrochloride) is an orally administered Phenylalanine Hydroxylase activator (or PAH activator). Sapropterin dihydrochloride, the active pharmaceutical ingredient in JAVYGTOR, is a synthetic preparation of the dihydrochloride salt of naturally occurring tetrahydrobiopterin (BH<sub>4</sub>). Sapropterin dihydrochloride is a white to off-white crystalline powder.

The chemical name of sapropterin dihydrochloride is (6R)-2-amino-6-[(1R,2S)-1,2-dihydroxypropyl]-5,6,7,8-tetrahydro-4(1H)-pteridinone dihydrochloride and the molecular formula is C<sub>9</sub>H<sub>15</sub>N<sub>5</sub>O<sub>3</sub>·2HCl with a molecular weight of 314.17.

Sapropterin dihydrochloride has the following structural formula:



JAVYGTOR is supplied as powder for oral solution containing 100 mg of sapropterin dihydrochloride (equivalent to 76.8 mg of sapropterin base).

JAVYGTOR powder for oral solution is off white to pale yellow powder. Each unit dose packet contains the following inactive ingredients: ascorbic acid, mannitol, sucralose and tripotassium citrate monohydrate.

## 12 CLINICAL PHARMACOLOGY

## 12.1 Mechanism of Action

Sapropterin dihydrochloride is a synthetic form of BH<sub>4</sub>, the cofactor for the enzyme phenylalanine hydroxylase (PAH). PAH hydroxylates Phe through an oxidative reaction to form tyrosine. In patients with PKU, PAH activity is absent or deficient. Treatment with BH<sub>4</sub> can activate residual PAH enzyme activity, improve the normal oxidative metabolism of Phe, and decrease Phe levels in some patients.

## 12.2 Pharmacodynamics

In PKU patients who are responsive to BH<sub>4</sub> treatment, blood Phe levels decrease within 24 hours after a single administration of sapropterin dihydrochloride, although maximal effect on Phe level may take up to a month, depending on the patient. A single daily dose of sapropterin dihydrochloride powder for oral solution is adequate to maintain stable blood Phe levels over a 24-hour period. Twelve patients with blood Phe levels ranging from 516 to 986 µmol/L (mean 747 ± 153 µmol/L) were assessed with 24-hour blood Phe level monitoring following a daily morning dose of 10 mg/kg per day. The blood Phe level remained stable during a 24-hour observation period. No substantial increases in blood Phe levels were observed following food intake throughout the 24-hour period.

Sapropterin dihydrochloride dose-response relationship was studied in an open-label, forced titration study at doses of 5 mg/kg per day, then 20 mg/kg per day, and then 10 mg/kg per day (Study 3) [see *Clinical Studies (14)*]. Individual blood Phe levels were highly variable among patients. The mean blood Phe level observed at the end of each 2-week dosing period decreased as the dose of sapropterin dihydrochloride increased, demonstrating an inverse relationship between the dose of sapropterin dihydrochloride and mean blood Phe levels.

### Cardiac Electrophysiology

A thorough QTc study was performed in 56 healthy adults. This randomized, placebo and active controlled crossover study was conducted to determine if a single supra-therapeutic (100 mg/kg) dose of sapropterin dihydrochloride, or a single therapeutic dose (20 mg/kg) of sapropterin dihydrochloride had an effect on cardiac repolarization. In this study, sapropterin dihydrochloride was administered after dissolving tablets in water under fed condition. This study demonstrated a dose-dependent shortening of the QT interval. The maximum placebo-subtracted mean change from baseline of the QTc interval was -3.69 and -8.32 ms (lower bound of 90% CI: -5.3 and -10.6 ms) at 20 and 100 mg/kg, respectively.

## 12.3 Pharmacokinetics

Studies in healthy subjects have shown comparable absorption of sapropterin when tablets are dissolved in water or orange juice and taken under fasted conditions. Administration of dissolved tablets after a high-fat/high-calorie meal resulted in mean increases in C<sub>max</sub> of 84% and AUC of 87% (dissolved in water). However, there was extensive variability in individual subject values for C<sub>max</sub> and AUC across the different modes of administration and meal conditions. In the clinical trials of sapropterin dihydrochloride, drug was administered in the morning as a dissolved tablet without regard to meals. The mean elimination half-life in PKU patients was approximately 6.7 hours (range 3.9 to 17 hours), comparable with values seen in healthy subjects (range 3 to 5.3 hours).

A study in healthy adults with 10 mg/kg of sapropterin dihydrochloride demonstrated

that the absorption via intact tablet administration was 40% greater than via dissolved tablet administration under fasted conditions based on  $AUC_{0-t}$ . The administration of intact tablets under fed conditions resulted in an approximately 43% increase in the extent of absorption compared to fasted conditions based on  $AUC_{0-t}$  [see *Dosage and Administration (2.2)*].

Population pharmacokinetic analysis of sapropterin including patients from 1 month to 49 years of age showed that body weight is the only covariate substantially affecting clearance or distribution volume (see Table 5). Pharmacokinetics in patients >49 years of age have not been studied.

**Table 5. Apparent Plasma Clearance by Age**

<b>Parameter</b>	0 to <1 yr* (N=10)	1 to <6 yr* (N=57)	6 to <12 yr† (N=23)	12 to <18 yr† (N=24)	≥18 yr† (N=42)
<b>CL/F (L/hr/kg) Mean ± SD (Median)</b>	81.5 ± 92.4 (53.6)	50.7 ± 20.1 (48.4)	51.7 ± 21.9 (47.4)	39.2 ± 9.3 (38.3)	37.9 ± 20.2 (31.8)

\*Evaluated at 20 mg/kg per day dose

†Evaluated at 5, 10, or 20 mg/kg per day doses

#### Metabolism

Sapropterin dihydrochloride is a synthetic form of tetrahydrobiopterin (BH4) and is expected to be metabolized and recycled by the same endogenous enzymes. *In vivo* endogenous BH4 is converted to quinoid dihydrobiopterin and is metabolized to dihydrobiopterin and biopterin. The enzymes dihydrofolate reductase and dihydropteridine reductase are responsible for the metabolism and recycling of BH4.

#### Drug Interactions Studies

##### *Clinical Studies*

In healthy subjects, administration of a single dose of sapropterin dihydrochloride at the maximum therapeutic dose of 20 mg/kg had no effect on the pharmacokinetics of a single dose of digoxin (P-gp substrate) administered concomitantly.

##### *In Vitro Studies Where Drug Interaction Potential Was Not Further Evaluated Clinically*

The potential for sapropterin to induce or inhibit cytochrome P450 enzymes was evaluated in *in vitro* studies which showed sapropterin did not inhibit CYP 1A2, 2B6, 2C8, 2C9, 2C19, 2D6, or 3A4/5, nor induce CYP 1A2, 2B6, or 3A4/5.

*In vitro* sapropterin did not inhibit OAT1, OAT3, OCT2, MATE1, and MATE2-K transporters. The potential for sapropterin to inhibit OATP1B1 and OATP1B3 has not been adequately studied. *In vitro*, sapropterin inhibits breast cancer resistance protein (BCRP) but the potential for a clinically significant increase in systemic exposure of BCRP substrates by sapropterin dihydrochloride appears to be low.

## **13 NONCLINICAL TOXICOLOGY**

### **13.1 Carcinogenesis, Mutagenesis, Impairment of Fertility**

A 2-year carcinogenicity study was conducted in F-344 rats, and a 78-week carcinogenicity study was conducted in CD-1 mice. In the 104-week oral carcinogenicity study in rats, sapropterin dihydrochloride doses of 25, 80, and 250 mg/kg per day (0.2, 0.7, and 2 times the maximum recommended human dose of 20 mg/kg per day, respectively, based on body surface area) were used. In the 78-week oral carcinogenicity study in mice, sapropterin dihydrochloride doses of 25, 80, and 250 mg/kg per day (0.1, 0.3, and 2 times the recommended human dose, respectively, based on body surface area) were used. In the 2-year rat carcinogenicity study, there was a statistically significant increase in the incidence of benign adrenal pheochromocytoma in male rats treated with the 250 mg/kg per day (about 2 times the maximum recommended human dose, based on body surface area) dose, as compared to vehicle treated rats. The mouse carcinogenicity study showed no evidence of a carcinogenic effect, but the study was not ideal due to its duration of 78 instead of 104 weeks.

Sapropterin dihydrochloride was genotoxic in the *in vitro* Ames test at concentrations of 625 mcg (TA98) and 5,000 mcg (TA100) per plate, without metabolic activation. However, no genotoxicity was observed in the *in vitro* Ames test with metabolic activation. Sapropterin dihydrochloride was genotoxic in the *in vitro* chromosomal aberration assay in Chinese hamster lung cells at concentrations of 0.25 and 0.5 mM. Sapropterin dihydrochloride was not mutagenic in the *in vivo* micronucleus assay in mice at doses up to 2,000 mg/kg per day (about 8 times the maximum recommended human dose of 20 mg/kg per day, based on body surface area). Sapropterin dihydrochloride, at oral doses up to 400 mg/kg per day (about 3 times the maximum recommended human dose, based on body surface area) was found to have no effect on fertility and reproductive function of male and female rats.

## 14 CLINICAL STUDIES

The efficacy of sapropterin dihydrochloride was evaluated in five clinical studies in patients with PKU.

Study 1 was a multicenter, open-label, uncontrolled clinical trial of 489 patients with PKU, ages 8 to 48 years (mean 22 years), who had baseline blood Phe levels  $\geq 450$   $\mu\text{mol/L}$  and who were not on Phe-restricted diets. All patients received treatment with sapropterin dihydrochloride 10 mg/kg per day for 8 days. For the purposes of this study, response to sapropterin dihydrochloride treatment was defined as a  $\geq 30\%$  decrease in blood Phe from baseline. At Day 8, 96 patients (20%) were identified as responders.

Study 2 was a multicenter, double-blind, placebo-controlled study of 88 patients with PKU who responded to sapropterin dihydrochloride in Study 1. After a washout period from Study 1, patients were randomized equally to either sapropterin dihydrochloride 10 mg/kg per day (N=41) or placebo (N=47) for 6 weeks. Efficacy was assessed by the mean change in blood Phe level from baseline to Week 6 in the sapropterin dihydrochloride-treated group as compared to the mean change in the placebo group.

The results showed that at baseline, the mean ( $\pm$ SD) blood Phe level was 843 ( $\pm 300$ )  $\mu\text{mol/L}$  in the sapropterin dihydrochloride-treated group and 888 ( $\pm 323$ )  $\mu\text{mol/L}$  in the placebo group. At Week 6, the sapropterin dihydrochloride-treated group had a mean ( $\pm$ SD) blood Phe level of 607 ( $\pm 377$ )  $\mu\text{mol/L}$ , and the placebo group had a mean blood Phe level of 891 ( $\pm 348$ )  $\mu\text{mol/L}$ . At Week 6, the sapropterin dihydrochloride- and placebo treated groups had mean changes in blood Phe level of  $-239$  and  $6$   $\mu\text{mol/L}$ , respectively (mean percent changes of  $-29\%$  ( $\pm 32$ ) and  $3\%$  ( $\pm 33$ ), respectively).

The difference between the groups was statistically significant ( $p < 0.001$ ) (Table 6).

**Table 6: Blood Phe Results in Study 2**

	<b>Sapropterin (N=41)</b>	<b>Placebo (N=47)</b>
<b>Baseline Blood Phe Level* (<math>\mu\text{mol/L}</math>)</b>		
Mean ( $\pm\text{SD}$ )	843 ( $\pm 300$ )	888 ( $\pm 323$ )
Percentiles (25th, 75th)	620, 990	618, 1141
<b>Week 6 Blood Phe Level (<math>\mu\text{mol/L}</math>)</b>		
Mean ( $\pm\text{SD}$ )	607 ( $\pm 377$ )	891 ( $\pm 348$ )
Percentiles (25th, 75th)	307, 812	619, 1143
<b>Mean Change in Blood Phe From Baseline to Week 6 (<math>\mu\text{mol/L}</math>)</b>		
Adjusted Mean ( $\pm\text{SE}$ ) <sup>†</sup>	-239 ( $\pm 38$ )	6 ( $\pm 36$ )
Percentiles (25th, 75th)	-397, -92	-96, 93
<b>Mean Percent Change in Blood Phe From Baseline to Week 6</b>		
Mean ( $\pm\text{SD}$ )	- 29 ( $\pm 32$ )	3 ( $\pm 33$ )
Percentiles (25th, 75th)	-61, -11	-13, 12

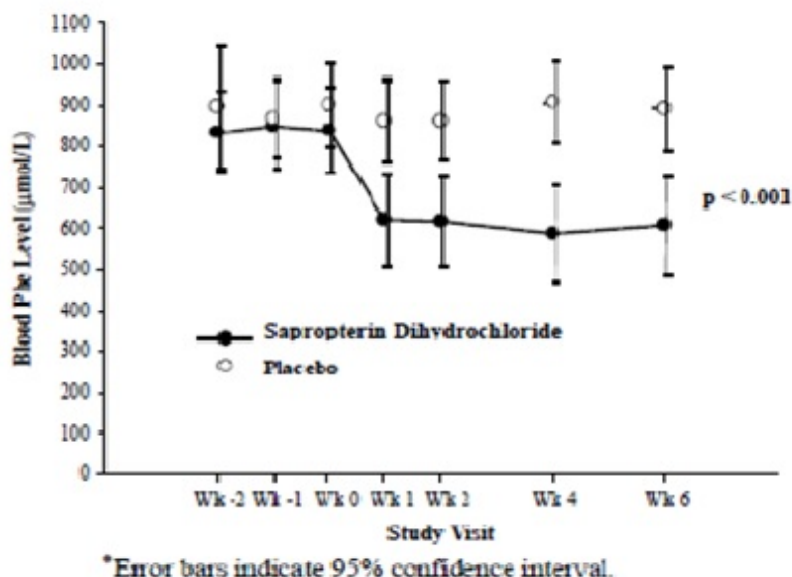
\* The mean baseline levels shown in this table represent the mean of 3 pretreatment levels (Wk -2, Wk -1, and Wk 0). Treatment with sapropterin dihydrochloride or placebo started at Wk 0.

<sup>†</sup>  $p$ -value  $< 0.001$ , adjusted mean and standard error from an ANCOVA model with change in blood Phe level from baseline to Week 6 as the response variable, and both treatment group and baseline blood Phe level as covariates.

Change in blood Phe was noted in the sapropterin dihydrochloride-treated group at Week 1 and was sustained through Week 6 (Figure 2).

**Figure 2: Mean Blood Phenylalanine (Phe) Level Over Time\***





Study 3 was a multicenter, open-label, extension study in which 80 patients who responded to sapropterin dihydrochloride treatment in Study 1 and completed Study 2 underwent 6 weeks of forced dose-titration with 3 different doses of sapropterin dihydrochloride. Treatments consisted of 3 consecutive 2-week courses of sapropterin dihydrochloride at doses of 5, then 20, and then 10 mg/kg per day. Blood Phe level was monitored after 2 weeks of treatment at each dose level. At baseline, mean ( $\pm$ SD) blood Phe was 844 ( $\pm$ 398)  $\mu$ mol/L. At the end of treatment with 5, 10, and 20 mg/kg per day, mean ( $\pm$ SD) blood Phe levels were 744 ( $\pm$ 384)  $\mu$ mol/L, 640 ( $\pm$ 382)  $\mu$ mol/L, and 581 ( $\pm$ 399)  $\mu$ mol/L, respectively (Table 7).

**Table 7: Blood Phe Results From Forced Dose-Titration in Study 3**

Sapropterin Dihydrochloride Dose Level (mg/kg per day)	No. of Patients	Mean ( $\pm$ SD) Blood Phe Level( $\mu$ mol/L)	Mean Changes ( $\pm$ SD) in Blood Phe Level From Week 0 ( $\mu$ mol/L)
Baseline (No Treatment)	80	844 ( $\pm$ 398)	—
5	80	744 ( $\pm$ 384)	-100 ( $\pm$ 295)
10	80	640 ( $\pm$ 382)	-204 ( $\pm$ 303)
20	80	581 ( $\pm$ 399)	-263 ( $\pm$ 318)

Study 4 was a multicenter study of 90 pediatric patients with PKU, ages 4 to 12 years, who were on Phe-restricted diets and who had blood Phe levels  $\leq$ 480  $\mu$ mol/L at screening. All patients were treated with open-label sapropterin dihydrochloride 20 mg/kg per day for 8 days. Response to sapropterin dihydrochloride was defined as a  $\geq$ 30% decrease in blood Phe from baseline at Day 8. At Day 8, 50 patients (56%) had a  $\geq$ 30% decrease in blood Phe.

Study 5 was an open label, single arm, multicenter trial in 93 pediatric patients with PKU, aged 1 month to 6 years, who had Phe levels greater than or equal to 360  $\mu$ mol/L at screening. All patients were treated with sapropterin dihydrochloride at 20 mg/kg per day and maintained on a Phe-restricted diet. At Week 4, 57 patients (61%) were

identified as responders (defined as  $\geq 30\%$  decreased in blood Phe from baseline) (see Figure 1 section 8.4)..

## **16 HOW SUPPLIED/STORAGE AND HANDLING**

JAVYGTOR (sapropterin dihydrochloride) powder for oral solution is off white to pale yellow powder packaged in unit dose packets as follows:

100 mg sapropterin dihydrochloride powder for oral solution per packet:

Single unit dose packet NDC 43598-097-11

Carton of 30 unit dose packets NDC 43598-097-30

### Storage

Store JAVYGTOR at 20°C to 25°C (68°F to 77°F) [see USP Controlled Room Temperature]. Protect from moisture.

## **17 PATIENT COUNSELING INFORMATION**

Advise the patient or caregiver to read the FDA-approved patient labeling (Patient Information and Instructions for Use).

### Hypersensitivity Reactions Including Anaphylaxis

Advise patients and caregivers to discontinue JAVYGTOR and contact the patient's healthcare provider immediately if they experience symptoms of anaphylaxis, including (but not limited to) wheezing, dyspnea, coughing, hypotension, flushing, nausea, and rash. Continue nutritional management including dietary protein and Phe restriction [see *Warnings and Precautions (5.1)*].

### Upper Gastrointestinal Mucosal Inflammation

Advise patients and caregivers to contact their healthcare provider if the patient experiences signs and symptoms suggestive of upper GI mucosal inflammation, including nausea, vomiting, dysphagia, dyspepsia, loss of appetite; oropharyngeal, esophageal, or upper abdominal pain [see *Warnings and Precautions (5.3)*].

### Hypophenylalaninemia [see *Warnings and Precautions (5.3)*]

Advise patients and caregivers that JAVYGTOR may cause hypophenylalaninemia (low blood Phe levels), especially in pediatric patients younger than 7 years of age.

### Monitoring of Blood Phe Levels [see *Warnings and Precautions (5.4)*]

Advise patients and caregivers that frequent blood Phe monitoring is important to ensure blood Phe levels are in the desirable range and that they should maintain dietary protein and Phe restriction while on JAVYGTOR.

Prolonged hyperphenylalaninemia (high blood Phe levels) in patients with PKU can result in severe neurologic damage, including intellectual disability, developmental delay, microcephaly, delayed speech, seizures, and behavioral abnormalities.

### Lack of Biochemical Response to JAVYGTOR

Some patients do not show a biochemical response (blood Phe reduction) when treated with JAVYGTOR. Advise patients and caregivers to discontinue treatment with JAVYGTOR

if the patient does not show an adequate biochemical response in blood Phe after one month of treatment with JAVYGTOR 20 mg/kg per day [see *Dosage and Administration (2.1)*, *Warnings and Precautions (5.4)*].

#### Interaction with Levodopa

Advise patients and caregivers that patients with underlying neurological disorders taking JAVYGTOR in combination with levodopa may experience seizures, exacerbation of seizures, over-stimulation or irritability. Inform patients and caregivers to contact their healthcare provider if the patient has a change in neurologic status during treatment with JAVYGTOR [see *Warnings and Precautions (5.5)*].

#### Hyperactivity

Advise patients and caregivers that JAVYGTOR may cause hyperactivity and to contact their healthcare provider if the patient experiences hyperactivity, restlessness, fidgeting, or excessive talking [see *Warnings and Precautions (5.6)*].

#### Dosing and Monitoring [see *Dosage and Administration (2.1)*].

Advise patients and caregivers of the following:

- JAVYGTOR should be used in conjunction with a PKU-specific diet, including dietary protein and Phe restriction.
- Dietary protein and Phe intake should not be modified during the JAVYGTOR evaluation period when assessing biochemical response.
- The patient must be evaluated for changes in blood Phe after being treated with JAVYGTOR at the recommended dose(s) for age to determine if they have a biochemical response and that blood Phe levels and dietary Phe intake should be assessed frequently during the first month of JAVYGTOR treatment.
- Monitoring of blood Phe levels is important during JAVYGTOR treatment.

#### Preparation and Administration [see *Dosage and Administration (2.2)*]

Advise patients and caregivers:

- JAVYGTOR powder for oral solution should be dissolved in water or apple juice or stirred in a small amount of soft food such as apple sauce or pudding.
- Take JAVYGTOR with a meal, preferably at the same time each day.

Rx only

Distributor:

**Dr. Reddy's Laboratories Inc.,**

Princeton, NJ 08540

**Made in India**

Issued: 01/2022

## **PATIENT INFORMATION**

**JAVYGTOR™ (Jah' vig tor)  
(sapropterin dihydrochloride)  
Powder for Oral Solution**

**What is JAVYGTOR?**

JAVYGTOR is a prescription medicine used to lower blood levels of phenylalanine (Phe), in adults and children one month of age and older with a certain type of Phenylketonuria (PKU). JAVYGTOR is used along with a Phe-restricted diet.

### **What should I tell my doctor before taking JAVYGTOR?**

**Before you take JAVYGTOR, tell your doctor about all your medical conditions, including if you:**

- are allergic to sapropterin dihydrochloride or any of the ingredients in JAVYGTOR. See the list of ingredients in sapropterin dihydrochloride powder for oral solution at the end of this leaflet.
- have poor nutrition or have loss of appetite.
- are pregnant or plan to become pregnant.
- are breastfeeding or plan to breastfeed. It is not known if JAVYGTOR passes into your breast milk. Talk to your doctor about the best way to feed your baby if you take JAVYGTOR.

**Tell your doctor about all the medicines you take**, including prescription and over-the-counter medicines, vitamins, herbal, and dietary supplements. JAVYGTOR and other medicines may interact with each other.

Especially tell your doctor if you take:

- a medicine that contains levodopa
- an antifolate medicine
- sildenafil (Revatio, Viagra), tadalafil (Adcirca, Cialis), vardenafil (Staxyn, Levitra)

Tell your doctor if you are not sure if your medicine is one that is listed above.

Know the medicines you take. Keep a list of them to show your doctor and pharmacist when you get a new medicine.

### **How should I take JAVYGTOR?**

- Take JAVYGTOR exactly as your doctor tells you. Your doctor should tell you how much JAVYGTOR to take and when to take it.
- Your doctor may change your dose of JAVYGTOR depending on how you respond to treatment.
- Take JAVYGTOR 1 time each day with a meal. It is best to take JAVYGTOR at the same time each day.
- JAVYGTOR comes as a powder for oral solution.
  - Be sure that you know what dose of sapropterin dihydrochloride powder your doctor prescribed and whether you should use JAVYGTOR 100 mg packets to prepare your dose.
  - Open JAVYGTOR powder packets only when you are ready to use them.
  - **JAVYGTOR should be dissolved in water or apple juice.** You may also mix the powder for oral solution in a small amount of soft food, such as apple sauce or pudding before taking.
  - See the detailed “Instructions for Use” that comes with JAVYGTOR for information about the correct way to dissolve and take a dose of JAVYGTOR.
- It is not possible to know if JAVYGTOR will work for you until you start taking JAVYGTOR powder for oral solution. Your doctor will check your blood Phe levels when you start taking JAVYGTOR to see if the medicine is working.
- During treatment with JAVYGTOR:
  - Any change you make to your diet may affect your blood Phe level. Follow your doctor’s instructions carefully and do not make any changes to your dietary Phe

intake without first talking with your doctor. Even if you take JAVYGTOR powder for oral solution, if your Phe blood levels are not well controlled, you can develop severe neurologic problems.

- Your doctor should continue to monitor your blood Phe levels often during your treatment with JAVYGTOR, **to make sure that your blood Phe levels are not too high or too low.**
- If you have a fever, or if you are sick, your blood Phe level may go up. Tell your doctor as soon as possible so they can change your dose of JAVYGTOR to help keep your blood Phe levels in the desired range.
- If you forget to take your dose of JAVYGTOR, take it as soon as you remember that day. Do not take 2 doses in a day.
- If you take too much JAVYGTOR, call your doctor for advice.

### **What are the possible side effects of JAVYGTOR?**

#### **JAVYGTOR can cause serious side effects, including:**

- **Severe allergic reactions.** Stop taking JAVYGTOR and get medical help right away if you develop any of these symptoms of a severe allergic reaction:
  - wheezing or trouble breathing
  - coughing
  - feeling lightheaded or you faint
  - flushing
  - nausea
  - rash
- **Inflammation of the lining of the stomach (gastritis) or esophagus (esophagitis).** Gastritis or esophagitis can happen with JAVYGTOR and may be severe. **Call your doctor right away if you have any of these signs or symptoms:**
  - severe upper stomach-area (abdominal) discomfort or pain, nausea and vomiting
  - blood in your vomit or stool
  - black, tarry stools
  - difficulty swallowing
  - loss of appetite
  - pain in the throat
- **Phe levels that are too low.** Some children under the age of 7 years who take high doses of JAVYGTOR each day may experience low Phe levels.
- **Too much or constant activity (hyperactivity) can happen with JAVYGTOR.** Tell your doctor if you have any signs of hyperactivity, including:
  - fidgeting or moving around too much
  - talking too much

The most common side effects of JAVYGTOR are:

- headache
- runny nose and nasal congestion
- sore throat
- diarrhea
- vomiting
- cough

Tell your doctor if you have any side effect that bothers you or that does not go away. These are not all the possible side effects of JAVYGTOR. For more information, ask your doctor or pharmacist. Call your doctor for medical advice about side effects. You may report side effects to FDA at 1-800-FDA-1088.

**How should I store JAVYGTOR?**

- Store JAVYGTOR at room temperature between 20°C to 25°C (68°F to 77°F)
- Protect from moisture.

**Keep JAVYGTOR and all medicines out of the reach of children.**

**General information about the safe and effective use of JAVYGTOR**

Medicines are sometimes prescribed for purposes other than those listed in a Patient Information leaflet. Do not use JAVYGTOR for a condition for which it was not prescribed. Do not give JAVYGTOR to other people, even if they have the same symptoms you have. It may harm them. You can ask your pharmacist or doctor for information about JAVYGTOR that is written for health professionals.

**What are the ingredients in JAVYGTOR powder for oral solution?**

**Active Ingredient:** sapropterin dihydrochloride.

**Inactive Ingredients:** ascorbic acid, mannitol, sucralose and tripotassium citrate monohydrate

For more information, call 1-888-375-3784.

This Patient Information has been approved by the U.S. Food and Drug Administration.

To reorder additional Patient Information Sheets contact Dr. Reddy's Customer Service at 1-866-733-3952.

Rx only

Distributor:

**Dr. Reddy's Laboratories Inc.,**

Princeton, NJ 08540

**Made in India**

Issued: 01/2022

**Instructions for Use**

**JAVYGTOR™ (Jah' vig tor)  
(sapropterin dihydrochloride)  
Powder for Oral Solution**

Read this Instructions for Use before you start taking JAVYGTOR and each time you refill your prescription. There may be new information. This information does not take the place of talking with your healthcare provider about your treatment. Talk to your doctor if you have any questions about the right dose of JAVYGTOR to take or how to mix it.

**Important information:**

- JAVYGTOR comes in a packet containing powder.
- Take JAVYGTOR exactly as your doctor tells you. Your doctor should tell you how much JAVYGTOR to take and when to take it.

- Your doctor may change your dose of JAVYGTOR depending on how you respond to treatment, or based on your baby's weight.
- If your baby weighs 22 pounds or less, follow the section called **“Instructions for giving JAVYGTOR (JAVYGTOR powder for oral solution 100 mg packets) to babies who weigh 22 pounds or less”**.
- Take JAVYGTOR 1 time each day with a meal. It is best to take JAVYGTOR at the same time each day.

### **Instructions for taking JAVYGTOR powder for oral solution:**

For babies who weigh 22 pounds or less, see the section below called **“Instructions for giving JAVYGTOR (JAVYGTOR 100 mg packets) to babies who weigh 22 pounds or less.”**

JAVYGTOR powder for oral solution should be dissolved in water or apple juice. The powder for oral solution may also be mixed in a small amount of soft foods, such as apple sauce or pudding.

### **To dissolve JAVYGTOR powder for oral solution:**

- Be sure that you know what dose of JAVYGTOR your doctor has prescribed and whether you should use JAVYGTOR 100 mg packets, sapropterin dihydrochloride powder for oral solution 500 mg packets, or both types of packets to prepare your dose.
- Open the packet(s) of JAVYGTOR powder for oral solution by folding and tearing, or cutting at the dotted line in the upper right corner of the packet. Open the packet(s) only when you are ready to use them.
- Empty the contents of the packet(s) into 4 ounces to 8 ounces (1/2 cup to 1 cup) of water or apple juice.
- Drink within 30 minutes.

### **Instructions for giving JAVYGTOR powder for oral solution (JAVYGTOR 100 mg packets) to babies who weigh 22 pounds or less:**

- The dose of JAVYGTOR is based on body weight. This will change as your baby grows. Your doctor will tell you:
  - the number of JAVYGTOR powder for oral solution 100 mg packets needed for one dose
  - the amount of water or apple juice needed to mix one dose of JAVYGTOR
  - the amount of the mixture (powder and water or apple juice) you will need to give your baby his or her prescribed dose of medicine.
- Give your baby the prescribed amount of mixture (powder and water or apple juice) within 30 minutes after mixing. If you are not able to give your baby's dose within 30 minutes after mixing, pour the unused medicine into the trash. You will need to mix a new dose.

### **Supplies needed to mix and give your baby's dose of JAVYGTOR powder for oral solution:**

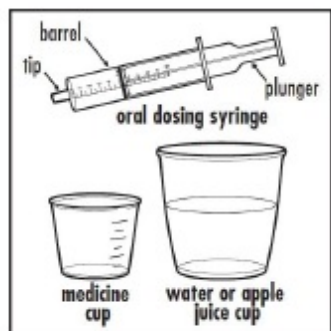
- the number of JAVYGTOR 100 mg packets needed for one dose

- a small cup of water or apple juice
- one 30 mL medicine cup for mixing · small spoon or clean utensil for mixing
- 10 mL oral dosing syringe
- scissors (optional)

Ask your pharmacist for a 30 mL medicine cup for mixing and an oral dosing syringe if you do not have these supplies.

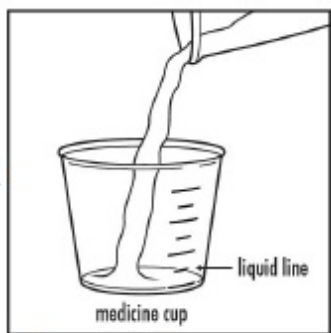
**Step 1:** Find a clean, flat work surface.

**Step 2:** Place a small cup of water or apple juice, the oral dosing syringe, and an empty medicine cup on your clean, flat work surface (see Figure A).



**Figure A**

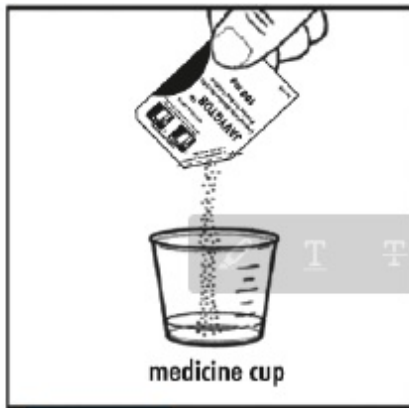
**Step 3:** Pour 5 mL or 10 mL of water or apple juice from the small cup into the medicine cup, as instructed by your doctor. Check to make sure that the amount of liquid lines up with the amount that your doctor tells you (see Figure B).



**Figure B**

**Step 4:** Check the label on the JAVYGTOR packet(s). If the packet is marked JAVYGTOR powder for oral solution 100 mg, empty the entire contents of the JAVYGTOR packet into the medicine cup (see Figure C).





**Figure C**

**Step 5:** Stir the mixture with the small spoon or other clean utensil until all of the powder completely dissolves (see Figure D).



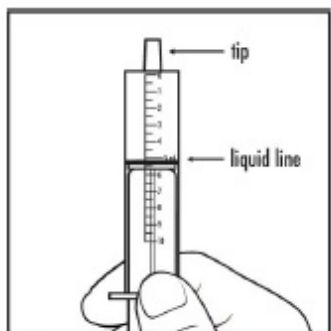
**Figure D**

**Step 6:** To give a dose of JAVYGTOR to your baby: Place the tip of the oral dosing syringe into the liquid inside the medicine cup. Pull back on the plunger and draw up the amount of the mixture prescribed by your doctor (see Figure E).



**Figure E**

**Step 7:** Take the oral dosing syringe out of the medicine cup. Carefully turn the oral dosing syringe so that the tip is pointing up. Check to make sure that the amount of medicine in the oral dosing syringe lines up with the amount of mixture prescribed by your doctor (see Figure F).



**Figure F**

**Step 8:** Place the tip of the oral dosing syringe into your baby's mouth. Point the tip of the oral dosing syringe toward either cheek (see Figure G). Push on the plunger slowly, a small amount at a time, until all of the mixture in the oral dosing syringe is given.



**Figure G**

**Step 9:** Throw away any remaining mixture. Remove the plunger from the barrel of the oral dosing syringe. Wash the oral dosing syringe and medicine cup with warm water and air dry. When the oral dosing syringe is dry, put the plunger back into the barrel. Store the oral dosing syringe and medicine cup for the next use.

**How should I store JAVYGTOR?**

- Store JAVYGTOR at room temperature between 20°C to 25°C (68°F to 77°F).
- Protect from moisture.

**Keep JAVYGTOR and all medicines out of the reach of children.**

This Instructions for Use has been approved by the U.S. Food and Drug Administration.

Rx only

Distributor:

**Dr. Reddy's Laboratories Inc.,**

Princeton, NJ 08540

**Made in India**

Issued: 01/2022

**PACKAGE LABEL PRINCIPAL DISPLAY PANEL SECTION**

Packet Label:

Opening instructions on front

Each packet contains 100 mg saproterin dihydrochloride equivalent

**Directions:** Dissolve contents of packet to 76.8 mg of saproterin base.

**Usual dosage:** See package insert, as described in the package insert.

**Store at 20°C to 25°C (68°F to 77°F)** [See USP Controlled Room Temperature].

**Protect from moisture.**

**Keep out of reach of children.**

**Distributor:**

**Dr. Reddy's Laboratories Inc.,**  
Princeton, NJ 08540

**Made in India** I: 0122

1800902044  
N.L. 38/USCAN/2002/71K

4 5 3 9 7 1 1 1

Opening instructions on front

Each packet contains 100 mg saproterin dihydrochloride equivalent

**Directions:** Dissolve contents of packet to 76.8 mg of saproterin base.

**Usual dosage:** See package insert, as described in the package insert.

**Store at 20°C to 25°C (68°F to 77°F)** [See USP Controlled Room Temperature].

**Protect from moisture.**

**Keep out of reach of children.**

**Distributor:**

**Dr. Reddy's Laboratories Inc.,**  
Princeton, NJ 08540

**Made in India** I: 0122

1800902044  
N.L. 38/USCAN/2002/71K

4 5 3 9 7 1 1 1

To Open: Fold and tear at solid line.  
To Close: Fold and tear at dotted line.

**OPENING INSTRUCTIONS**

While folded on seal line, tear open at notch or use scissors at dotted line.

NDC 43558-097-11

**JAVYGTOR™**  
(saproterin dihydrochloride)  
Powder for Oral Solution

**100 mg**

Rx only Dr.Reddy's

To Open: Fold and tear at solid line.  
To Close: Fold and tear at dotted line.

**OPENING INSTRUCTIONS**

While folded on seal line, tear open at notch or use scissors at dotted line.

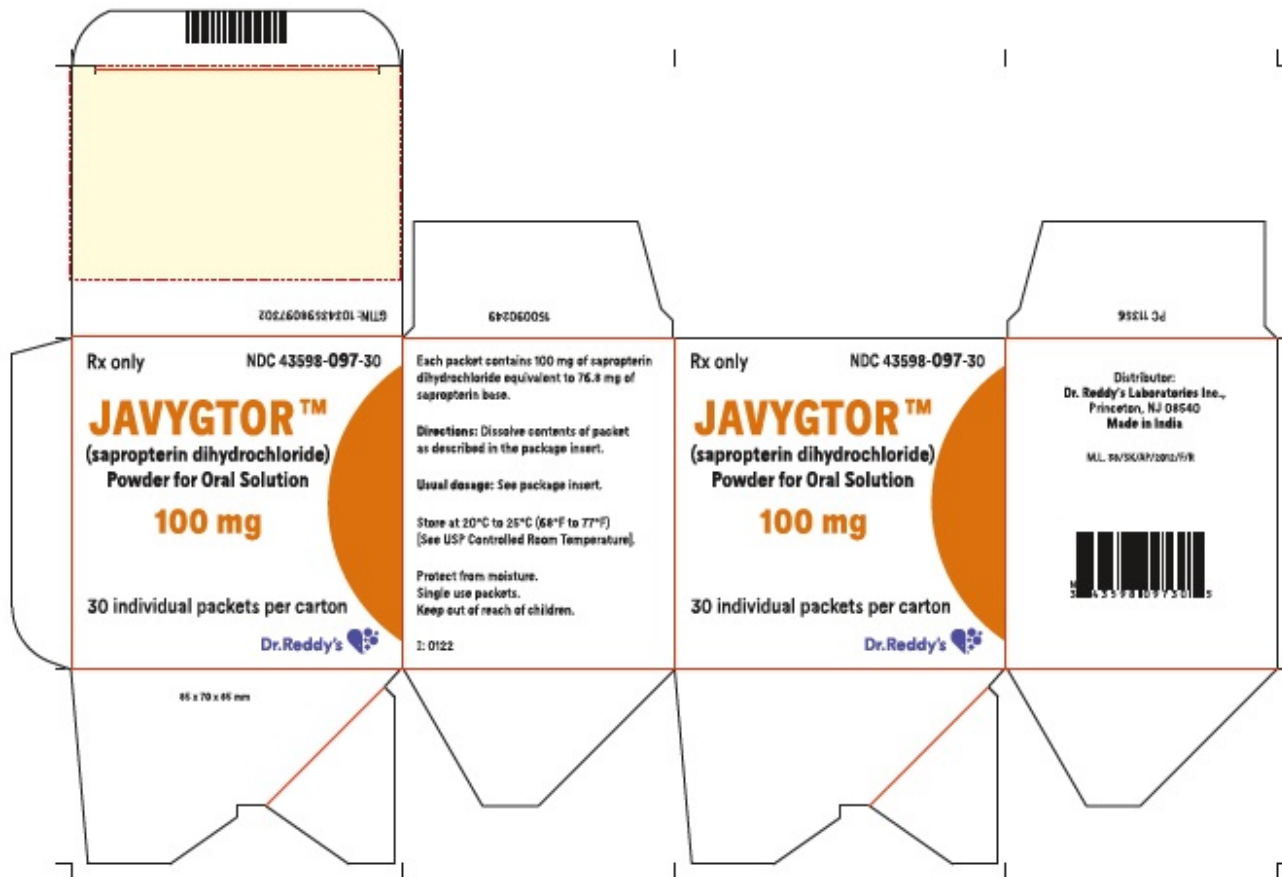
NDC 43558-097-11

**JAVYGTOR™**  
(saproterin dihydrochloride)  
Powder for Oral Solution

**100 mg**

Rx only Dr.Reddy's

Carton Label:



## JAVYGTOR

sapropterin dihydrochloride powder, for solution

### Product Information

<b>Product Type</b>	HUMAN PRESCRIPTION DRUG	<b>Item Code (Source)</b>	NDC:43598-097
<b>Route of Administration</b>	ORAL		

### Active Ingredient/Active Moiety

Ingredient Name	Basis of Strength	Strength
<b>Sapropterin Dihydrochloride</b> (UNII: RG277LF5B3) (SAPROPTERIN - UNII:EGX6574321)	Sapropterin Dihydrochloride	100 mg

### Inactive Ingredients

Ingredient Name	Strength
<b>Ascorbic Acid</b> (UNII: PQ6CK8PD0R)	
<b>Mannitol</b> (UNII: 3OWL53L36A)	
<b>Sucralose</b> (UNII: 96K6UQ3ZD4)	
<b>Potassium Citrate</b> (UNII: EE90ONI6FF)	

### Product Characteristics

<b>Color</b>	WHITE (off white to pale yellow)	<b>Score</b>	
--------------	----------------------------------	--------------	--

<b>Shape</b>		<b>Size</b>	
<b>Flavor</b>		<b>Imprint Code</b>	
<b>Contains</b>			

**Packaging**

#	Item Code	Package Description	Marketing Start Date	Marketing End Date
1	NDC:43598-097-30	30 in 1 CARTON	09/16/2022	
1	NDC:43598-097-11	1 in 1 PACKET; Type 0: Not a Combination Product		

**Marketing Information**

Marketing Category	Application Number or Monograph Citation	Marketing Start Date	Marketing End Date
ANDA	ANDA209452	09/16/2022	

**Labeler** - Dr. Reddys Laboratories Inc (802315887)

**Establishment**

Name	Address	ID/FEI	Business Operations
Dr. Reddys Laboratories Limited (SEZ UNIT)		860037244	analysis(43598-097) , manufacture(43598-097)

Revised: 1/2022

Dr. Reddys Laboratories Inc