

CLOPIDOGREL - clopidogrel bisulfate tablet, film coated

Novadoz Pharmaceuticals LLC

HIGHLIGHTS OF PRESCRIBING INFORMATION

These highlights do not include all the information needed to use CLOPIDOGREL TABLETS safely and effectively. See full prescribing information for CLOPIDOGREL TABLETS.

CLOPIDOGREL tablets for oral use

Initial U.S. Approval: 1997

WARNING: DIMINISHED ANTIPLATELET EFFECT IN PATIENTS WITH TWO LOSS-OF-FUNCTION ALLELES OF THE CYP2C19 GENE

See full prescribing information for complete boxed warning.

- Effectiveness of clopidogrel depends on conversion to an active metabolite by the cytochrome P450 (CYP) system, principally CYP2C19. (5.1, 12.3)
- Tests are available to identify patients who are CYP2C19 poor metabolizers. (12.5)
- Consider use of another platelet P2Y₁₂ inhibitor in patients identified as CYP2C19 poor metabolizers. (5.1)

INDICATIONS AND USAGE

Clopidogrel tablets are a P2Y₁₂ platelet inhibitor indicated for:

- Acute coronary syndrome
 - For patients with non-ST-segment elevation ACS (unstable angina [UA]/non-ST-elevation myocardial infarction [NSTEMI]), clopidogrel tablets has been shown to reduce the rate of myocardial infarction (MI) and stroke. (1.1)
 - For patients with ST-elevation myocardial infarction (STEMI), clopidogrel tablets has been shown to reduce the rate of MI and stroke. (1.1)
- Recent MI, recent stroke, or established peripheral arterial disease. Clopidogrel tablets has been shown to reduce the rate of MI and stroke. (1.2)

DOSAGE AND ADMINISTRATION

- Acute coronary syndrome (2.1)
 - Initiate clopidogrel tablets with a single 300 mg oral loading dose and then continue at 75 mg once daily.
 - Initiating clopidogrel tablets without a loading dose will delay establishment of an antiplatelet effect by several days.
- Recent MI, recent stroke, or established peripheral arterial disease: 75 mg once daily orally without a loading dose. (2.2)

DOSAGE FORMS AND STRENGTHS

Film-coated tablets: 75 mg (3)

CONTRAINDICATIONS

- Active pathological bleeding, such as peptic ulcer or intracranial hemorrhage (4.1)
- Hypersensitivity to clopidogrel or any component of the product (4.2)

WARNINGS AND PRECAUTIONS

- CYP2C19 inhibitors: Avoid concomitant use of omeprazole or esomeprazole. (5.1)
- Bleeding: Clopidogrel increases risk of bleeding. (5.2)
- Discontinuation: Premature discontinuation increases risk of cardiovascular events. Discontinue 5 days prior to elective surgery that has a major risk of bleeding. (5.3)
- Thrombotic thrombocytopenic purpura (TTP) has been reported. (5.4)
- Cross-reactivity among thienopyridines has been reported. (5.5)

ADVERSE REACTIONS

Bleeding, including life-threatening and fatal bleeding, is the most commonly reported adverse reaction. (6.1)

To report SUSPECTED ADVERSE REACTIONS, contact Novadoz Pharmaceuticals LLC at 1-855-668-2369 or FDA at 1-800-FDA-1088 or www.fda.gov/medwatch.

----- **DRUG INTERACTIONS** -----

- CYP2C19 inducers: Increases levels of clopidogrel active metabolite and increases platelet inhibition. (7.1)
- Opioids: Decreased exposure to clopidogrel. Consider use of parenteral antiplatelet agent. (7.3)
- Nonsteroidal anti-inflammatory drugs (NSAIDs), warfarin, selective serotonin and serotonin norepinephrine reuptake inhibitors (SSRIs, SNRIs): Increases risk of bleeding. (7.4, 7.5, 7.6)
- Other Antiplatelet Agents: Increases the risk of bleeding due to an additive effect. (7.7)
- Repaglinide (CYP2C8 substrates): Increases substrate plasma concentrations. (7.8)

See 17 for PATIENT COUNSELING INFORMATION.

Revised: 8/2023

FULL PRESCRIBING INFORMATION: CONTENTS*

WARNING: DIMINISHED ANTIPLATELET EFFECT IN PATIENTS WITH TWO LOSS-OF-FUNCTION ALLELES OF THE CYP2C19 GENE

1 INDICATIONS AND USAGE

- 1.1 Acute Coronary Syndrome (ACS)
- 1.2 Recent MI, Recent Stroke, or Established Peripheral Arterial Disease

2 DOSAGE AND ADMINISTRATION

- 2.1 Acute Coronary Syndrome
- 2.2 Recent MI, Recent Stroke, or Established Peripheral Arterial Disease

3 DOSAGE FORMS AND STRENGTHS

4 CONTRAINDICATIONS

- 4.1 Active Bleeding
- 4.2 Hypersensitivity

5 WARNINGS AND PRECAUTIONS

- 5.1 Diminished Antiplatelet Activity in Patients with Impaired CYP2C19 Function
- 5.2 General Risk of Bleeding
- 5.3 Discontinuation of Clopidogrel
- 5.4 Thrombotic Thrombocytopenic Purpura (TTP)
- 5.5 Cross-Reactivity among Thienopyridines

6 ADVERSE REACTIONS

- 6.1 Clinical Trials Experience
- 6.2 Postmarketing Experience

7 DRUG INTERACTIONS

- 7.1 CYP2C19 Inducers
- 7.2 CYP2C19 Inhibitors
- 7.3 Opioids
- 7.4 Nonsteroidal Anti-inflammatory Drugs (NSAIDs)
- 7.5 Warfarin (CYP2C9 Substrates)
- 7.6 SSRIs and SNRIs
- 7.7 Other Antiplatelet Agents
- 7.8 Repaglinide (CYP2C8 Substrates)

8 USE IN SPECIFIC POPULATIONS

- 8.1 Pregnancy
- 8.2 Lactation
- 8.4 Pediatric Use
- 8.5 Geriatric Use
- 8.6 Renal Impairment
- 8.7 Hepatic Impairment

10 OVERDOSAGE

11 DESCRIPTION

12 CLINICAL PHARMACOLOGY

- 12.1 Mechanism of Action
- 12.2 Pharmacodynamics
- 12.3 Pharmacokinetics
- 12.5 Pharmacogenomics

13 NONCLINICAL TOXICOLOGY

- 13.1 Carcinogenesis, Mutagenesis, Impairment of Fertility

14 CLINICAL STUDIES

- 14.1 Acute Coronary Syndrome
- 14.2 Recent Myocardial Infarction, Recent Stroke, or Established Peripheral Arterial Disease
- 14.3 No Demonstrated Benefit of Clopidogrel plus Aspirin in Patients with Multiple Risk Factors or Established Vascular Disease

16 HOW SUPPLIED/STORAGE AND HANDLING

17 PATIENT COUNSELING INFORMATION

* Sections or subsections omitted from the full prescribing information are not listed.

FULL PRESCRIBING INFORMATION

WARNING: DIMINISHED ANTIPLATELET EFFECT IN PATIENTS WITH TWO LOSS-OF-FUNCTION ALLELES OF THE CYP2C19 GENE

The effectiveness of clopidogrel results from its antiplatelet activity, which is dependent on its conversion to an active metabolite by the cytochrome P450 (CYP) system, principally CYP2C19 [see *Warnings and Precautions (5.1)*, *Clinical Pharmacology (12.3)*]. Clopidogrel at recommended doses forms less of the active metabolite and so has a reduced effect on platelet activity in patients who are homozygous for nonfunctional alleles of the CYP2C19 gene, (termed “CYP2C19 poor metabolizers”). Tests are available to identify patients who are CYP2C19 poor metabolizers [see *Clinical Pharmacology (12.5)*]. Consider use of another platelet P2Y₁₂ inhibitor in patients identified as CYP2C19 poor metabolizers.

1 INDICATIONS AND USAGE

1.1 Acute Coronary Syndrome (ACS)

- Clopidogrel tablets are indicated to reduce the rate of myocardial infarction (MI) and stroke in patients with non-ST-segment elevation ACS (unstable angina [UA]/non-ST-

elevation myocardial infarction [NSTEMI]), including patients who are to be managed medically and those who are to be managed with coronary revascularization. Clopidogrel tablets should be administered in conjunction with aspirin.

- Clopidogrel tablets are indicated to reduce the rate of myocardial infarction and stroke in patients with acute ST-elevation myocardial infarction (STEMI) who are to be managed medically. Clopidogrel tablets should be administered in conjunction with aspirin.

1.2 Recent MI, Recent Stroke, or Established Peripheral Arterial Disease

In patients with established peripheral arterial disease or with a history of recent myocardial infarction (MI) or recent stroke clopidogrel tablets are indicated to reduce the rate of MI and stroke.

2 DOSAGE AND ADMINISTRATION

2.1 Acute Coronary Syndrome

In patients who need an antiplatelet effect within hours, initiate clopidogrel tablets with a single 300 mg oral loading dose and then continue at 75 mg once daily. Initiating clopidogrel tablets without a loading dose will delay establishment of an antiplatelet effect by several days [see *Clinical Pharmacology (12.3)* and *Clinical Studies (14.1)*].

2.2 Recent MI, Recent Stroke, or Established Peripheral Arterial Disease

75 mg once daily orally without a loading dose [see *Clinical Pharmacology (12.3)* and *Clinical Studies (14.2)*].

3 DOSAGE FORMS AND STRENGTHS

- 75 mg tablets: Pink colored, round shaped, film-coated tablets debossed with “MC5” on one side and plain on other side.

4 CONTRAINDICATIONS

4.1 Active Bleeding

Clopidogrel is contraindicated in patients with active pathological bleeding such as peptic ulcer or intracranial hemorrhage.

4.2 Hypersensitivity

Clopidogrel is contraindicated in patients with hypersensitivity (e.g., anaphylaxis) to clopidogrel or any component of the product [see *Adverse Reactions (6.2)*].

5 WARNINGS AND PRECAUTIONS

5.1 Diminished Antiplatelet Activity in Patients with Impaired CYP2C19 Function

Clopidogrel is a prodrug. Inhibition of platelet aggregation by clopidogrel is achieved through an active metabolite. The metabolism of clopidogrel to its active metabolite can be impaired by genetic variations in CYP2C19 [see *Boxed Warning*].

The metabolism of clopidogrel can also be impaired by drugs that inhibit CYP2C19, such as omeprazole or esomeprazole. Avoid concomitant use of clopidogrel with omeprazole or esomeprazole because both significantly reduce the antiplatelet activity of clopidogrel [see *Drug Interactions (7.1)*].

5.2 General Risk of Bleeding

P2Y₁₂ inhibitors (thienopyridines), including clopidogrel, increase the risk of bleeding. P2Y₁₂ inhibitors (thienopyridines), inhibit platelet aggregation for the lifetime of the platelet (7-10 days). Because the half-life of clopidogrel's active metabolite is short, it may be possible to restore hemostasis by administering exogenous platelets; however, platelet transfusions within 4 hours of the loading dose or 2 hours of the maintenance dose may be less effective.

Use of drugs that induce the activity of CYP2C19 would be expected to result in increased drug levels of the active metabolite of clopidogrel and might potentiate the bleeding risk. As a precaution, avoid concomitant use of strong CYP2C19 inducers [see *Drug Interactions (7.1) and Clinical Pharmacology (12.3)*].

Risk factors for bleeding include concomitant use of other drugs that increase the risk of bleeding (e.g., anticoagulants, antiplatelet agents, and chronic use of NSAIDs) [see *Drug Interactions (7.4, 7.5, 7.6, 7.7)*].

5.3 Discontinuation of Clopidogrel

Discontinuation of clopidogrel increases the risk of cardiovascular events. If clopidogrel must be temporarily discontinued (e.g., to treat bleeding or for surgery with a major risk of bleeding), restart it as soon as possible. When possible, interrupt therapy with clopidogrel for five days prior to such surgery. Resume clopidogrel as soon as hemostasis is achieved.

5.4 Thrombotic Thrombocytopenic Purpura (TTP)

TTP, sometimes fatal, has been reported following use of clopidogrel, sometimes after a short exposure (<2 weeks). TTP is a serious condition that requires urgent treatment including plasmapheresis (plasma exchange). It is characterized by thrombocytopenia, microangiopathic hemolytic anemia (schistocytes [fragmented RBCs] seen on peripheral smear), neurological findings, renal dysfunction, and fever [see *Adverse Reactions (6.2)*].

5.5 Cross-Reactivity among Thienopyridines

Hypersensitivity including rash, angioedema or hematologic reaction has been reported in patients receiving clopidogrel, including patients with a history of hypersensitivity or hematologic reaction to other thienopyridines [see *Contraindications (4.2) and Adverse Reactions (6.2)*].

6 ADVERSE REACTIONS

The following serious adverse reactions are discussed below and elsewhere in the labeling:

- Bleeding [see *Warnings and Precautions (5.2)*]
- Thrombotic thrombocytopenic purpura [see *Warnings and Precautions (5.4)*]

6.1 Clinical Trials Experience

Because clinical trials are conducted under widely varying conditions and durations of follow- up, adverse reaction rates observed in the clinical trials of a drug cannot be directly compared to rates in the clinical trials of another drug and may not reflect the rates observed in practice.

Clopidogrel has been evaluated for safety in more than 54,000 patients, including over 21,000 patients treated for one year or more. The clinically important adverse reactions observed in trials comparing clopidogrel plus aspirin to placebo plus aspirin and trials comparing clopidogrel alone to aspirin alone are discussed below.

Bleeding

CURE

In CURE, clopidogrel use with aspirin was associated with an increase in major bleeding (primarily gastrointestinal and at puncture sites) compared to placebo with aspirin (see Table 1). The incidence of intracranial hemorrhage (0.1%) and fatal bleeding (0.2%) were the same in both groups. Other bleeding events that were reported more frequently in the clopidogrel group were epistaxis, hematuria, and bruise.

The overall incidence of bleeding is described in Table 1.

Table 1: CURE Incidence of Bleeding Complications (% patients)

Event	Clopidogrel (+ aspirin) (n=6,259)	Placebo (+ aspirin) (n=6,303)
Major bleeding*	3.7	2.7

Life-threatening bleeding	2.2	1.8
Fatal	0.2	0.2
5 g/dL hemoglobin drop	0.9	0.9
Requiring surgical intervention	0.7	0.7
Hemorrhagic strokes	0.1	0.1
Requiring inotropes	0.5	0.5
Requiring transfusion (≥ 4 units)	1.2	1.0
Other major bleeding	1.6	1.0
Significantly disabling	0.4	0.3
Intraocular bleeding with significant loss of vision	0.05	0.03
Requiring 2-3 units of blood	1.3	0.9
Minor bleeding[†]	5.1	2.4

* Life-threatening and other major bleeding.

† Led to interruption of study medication.

COMMIT

In COMMIT, similar rates of major bleeding were observed in the clopidogrel and placebo groups, both of which also received aspirin (see Table 2).

Table 2: Incidence of Bleeding Events in COMMIT (% patients)

Type of Bleeding	Clopidogrel (+ aspirin) (n=22,961)	Placebo (+ aspirin) (n=22,891)	p-value
Major* noncerebral or cerebral bleeding	0.6	0.5	0.59
Major noncerebral	0.4	0.3	0.48
Fatal	0.2	0.2	0.90
Hemorrhagic stroke	0.2	0.2	0.91
Fatal	0.2	0.2	0.81
Other noncerebral bleeding (nonmajor)	3.6	3.1	0.005
Any noncerebral bleeding	3.9	3.4	0.004

* Major bleeds were cerebral bleeds or noncerebral bleeds thought to have caused death

or that required transfusion.

CAPRIE (Clopidogrel vs Aspirin)

In CAPRIE, gastrointestinal hemorrhage occurred at a rate of 2.0% in those taking clopidogrel versus 2.7% in those taking aspirin; bleeding requiring hospitalization occurred in 0.7% and 1.1%, respectively. The incidence of intracranial hemorrhage was 0.4% for clopidogrel compared to 0.5% for aspirin.

Other bleeding events that were reported more frequently in the clopidogrel group were epistaxis and hematoma.

Other Adverse Events

In CURE and CHARISMA, which compared clopidogrel plus aspirin to aspirin alone, there was no difference in the rate of adverse events (other than bleeding) between clopidogrel and placebo.

In CAPRIE, which compared clopidogrel to aspirin, pruritus was more frequently reported in those taking clopidogrel. No other difference in the rate of adverse events (other than bleeding) was reported.

6.2 Postmarketing Experience

The following adverse reactions have been identified during postapproval use of clopidogrel. Because these reactions are reported voluntarily from a population of an unknown size, it is not always possible to reliably estimate their frequency or establish a causal relationship to drug exposure.

Hemorrhages, including those with fatal outcome, have been reported in patients treated with clopidogrel.

- *Blood and lymphatic system disorders:* Agranulocytosis, aplastic anemia/pancytopenia, thrombotic thrombocytopenic purpura (TTP), acquired hemophilia A
- *Gastrointestinal disorders:* Colitis (including ulcerative or lymphocytic colitis), pancreatitis, stomatitis, gastric/duodenal ulcer, diarrhea
- *General disorders and administration site condition:* Fever
- *Hepatobiliary disorders:* Acute liver failure, hepatitis (noninfectious), abnormal liver function test
- *Immune system disorders:* Hypersensitivity reactions, anaphylactoid reactions, serum sickness, insulin autoimmune syndrome, which can lead to severe hypoglycemia
- *Musculoskeletal, connective tissue and bone disorders:* Myalgia, arthralgia, arthritis
- *Nervous system disorders:* Taste disorders, headache, ageusia
- *Psychiatric disorders:* Confusion, hallucinations
- *Respiratory, thoracic and mediastinal disorders:* Bronchospasm, interstitial pneumonitis, eosinophilic pneumonia
- *Renal and urinary disorders:* Increased creatinine levels
- *Skin and subcutaneous tissue disorders:* Maculopapular, erythematous or exfoliative rash, urticaria, bullous dermatitis, eczema, toxic epidermal necrolysis, Stevens-Johnson syndrome, acute generalized exanthematous pustulosis (AGEP), angioedema, drug-induced hypersensitivity syndrome, drug rash with eosinophilia and systemic symptoms (DRESS), erythema multiforme, lichen planus, generalized pruritus
- *Vascular disorders:* Vasculitis, hypotension

7 DRUG INTERACTIONS

7.1 CYP2C19 Inducers

Since clopidogrel is metabolized to its active metabolite partly by CYP2C19, use of drugs that induce the activity of this enzyme would be expected to result in increased drug levels of the active metabolite of clopidogrel.

Rifampin strongly induces CYP2C19 resulting to both an increase level of clopidogrel active metabolite and platelet inhibition, which in particular might potentiate the risk of bleeding. As a precaution, avoid concomitant use of strong CYP2C19 inducers [*see Warnings and Precautions (5.1) and Clinical Pharmacology (12.3)*].

7.2 CYP2C19 Inhibitors

Clopidogrel is metabolized to its active metabolite in part by CYP2C19. Concomitant use of drugs that inhibit the activity of this enzyme results in reduced plasma concentrations of the active metabolite of clopidogrel and a reduction in platelet inhibition [*see Warnings and Precautions (5.1)*].

Omeprazole or Esomeprazole

Avoid concomitant use of clopidogrel with omeprazole or esomeprazole. In clinical studies, omeprazole was shown to reduce significantly the antiplatelet activity of clopidogrel when given concomitantly or 12 hours apart. A similar reduction in antiplatelet activity was observed with esomeprazole when given concomitantly with clopidogrel. Dexlansoprazole, lansoprazole, and pantoprazole had less effect on the antiplatelet activity of clopidogrel than did omeprazole or esomeprazole [*see Warnings and Precautions (5.1) and Clinical Pharmacology (12.3)*].

7.3 Opioids

As with other oral P2Y₁₂ inhibitors, coadministration of opioid agonists delay and reduce the absorption of clopidogrel, presumably because of slowed gastric emptying, resulting in reduced exposure to its metabolites [*see Clinical Pharmacology (12.3)*]. Consider the use of a parenteral antiplatelet agent in acute coronary syndrome patients requiring coadministration of morphine or other opioid agonists.

7.4 Nonsteroidal Anti-inflammatory Drugs (NSAIDs)

Coadministration of clopidogrel and NSAIDs increases the risk of gastrointestinal bleeding.

7.5 Warfarin (CYP2C9 Substrates)

Although the administration of clopidogrel 75 mg per day did not modify the pharmacokinetics of S-warfarin (a CYP2C9 substrate) or INR in patients receiving long-term warfarin therapy, coadministration of clopidogrel with warfarin increases the risk of bleeding because of independent effects on hemostasis.

However, at high concentrations *in vitro*, clopidogrel inhibits CYP2C9.

7.6 SSRIs and SNRIs

Since selective serotonin reuptake inhibitors (SSRIs) and serotonin norepinephrine reuptake inhibitors (SNRIs) affect platelet activation, the concomitant administration of SSRIs and SNRIs with clopidogrel may increase the risk of bleeding.

7.7 Other Antiplatelet Agents

Coadministration of antiplatelet agents increase the risk of bleeding due to an additive effect. Promptly evaluate any signs or symptoms of blood loss if patients are treated concomitantly with other antiplatelet agents [see *Warnings and Precautions (5.2)*].

7.8 Repaglinide (CYP2C8 Substrates)

The acyl- β -glucuronide metabolite of clopidogrel is a strong inhibitor of CYP2C8. Clopidogrel can increase the systemic exposure to drugs that are primarily cleared by CYP2C8, thereby needing dose adjustment and appropriate monitoring. Clopidogrel increased repaglinide exposures by 3.9-fold to 5.1-fold [see *Clinical Pharmacology (12.3)*]. Avoid concomitant use of repaglinide with clopidogrel. If concomitant use cannot be avoided, initiate repaglinide at 0.5 mg before each meal and do not exceed a total daily dose of 4 mg. Increased frequency of glucose monitoring may be required during concomitant use.

8 USE IN SPECIFIC POPULATIONS

8.1 Pregnancy

Risk Summary

Available data from cases reported in published literature and postmarketing surveillance with clopidogrel use in pregnant women have not identified any drug-associated risks for major birth defects or miscarriage [see *Data*]. There are risks to the pregnant woman and fetus associated with myocardial infarction and stroke [see *Clinical Considerations*]. No evidence of fetotoxicity was observed when clopidogrel was administered to pregnant rats and rabbits during organogenesis at doses corresponding to 65 and 78 times the recommended daily human dose [see *Data*].

The estimated background risk of major birth defects and miscarriage for the indicated populations is unknown. All pregnancies have a background risk of birth defects, loss, or other adverse outcomes. In the U.S. general population, the estimated background risk of major birth defects and miscarriage in clinically recognized pregnancies is 2% to 4% and 15% to 20%, respectively.

Clinical Considerations

Disease-associated maternal and/or embryo/fetal risk

Myocardial infarction and stroke are medical emergencies. Therapy for the pregnant woman should not be withheld because of potential concerns regarding the effects of

clopidogrel on the fetus.

Labor or delivery

Clopidogrel use during labor or delivery will increase the risk of maternal bleeding and hemorrhage. Avoid neuraxial blockade during clopidogrel use because of the risk of spinal hematoma. When possible, discontinue clopidogrel 5 to 7 days prior to labor, delivery, or neuraxial blockade.

Data

Human data

The available data from published case reports over two decades of postmarketing use have not identified an association with clopidogrel use in pregnancy and major birth defects, miscarriage, or adverse fetal outcomes.

Animal data

Embryo-fetal developmental toxicology studies were performed in pregnant rats and rabbits with doses up to 500 and 300 mg/kg/day, respectively, administered during organogenesis. These doses, corresponding to 65 and 78 times the recommended daily human dose, respectively, on a mg/m² basis, revealed no evidence of impaired fertility or fetotoxicity due to clopidogrel.

8.2 Lactation

Risk Summary

There are no data on the presence of clopidogrel in human milk or the effects on milk production. No adverse effects on breastfed infants have been observed with maternal clopidogrel use during lactation in a small number of postmarketing cases. Studies in rats have shown that clopidogrel and/or its metabolites are present in the milk. When a drug is present in animal milk, it is likely that the drug will be present in human milk. The developmental and health benefits of breastfeeding should be considered along with mother's clinical need for clopidogrel and any potential adverse effects on the breastfed infant from clopidogrel or from underlying maternal condition.

8.4 Pediatric Use

Safety and effectiveness in pediatric populations have not been established.

A randomized, placebo-controlled trial (CLARINET) did not demonstrate a clinical benefit of clopidogrel in neonates and infants with cyanotic congenital heart disease palliated with a systemic-to-pulmonary arterial shunt. Possible factors contributing to this outcome were the dose of clopidogrel, the concomitant administration of aspirin, and the late initiation of therapy following shunt palliation. It cannot be ruled out that a trial with a different design would demonstrate a clinical benefit in this patient population.

8.5 Geriatric Use

Of the total number of subjects in the CAPRIE and CURE controlled clinical studies, approximately 50% of patients treated with clopidogrel were 65 years of age and older, and 15% were 75 years and older. In COMMIT, approximately 58% of the patients treated with clopidogrel were 60 years and older, 26% of whom were 70 years and older.

The observed risk of bleeding events with clopidogrel plus aspirin versus placebo plus aspirin by age category is provided in Table 1 and Table 2 for the CURE and COMMIT trials, respectively [see Adverse Reactions (6.1)]. No dosage adjustment is necessary in elderly patients.

8.6 Renal Impairment

Experience is limited in patients with severe and moderate renal impairment [see Clinical Pharmacology (12.2)].

8.7 Hepatic Impairment

No dosage adjustment is necessary in patients with hepatic impairment [see Clinical Pharmacology (12.2)].

10 OVERDOSAGE

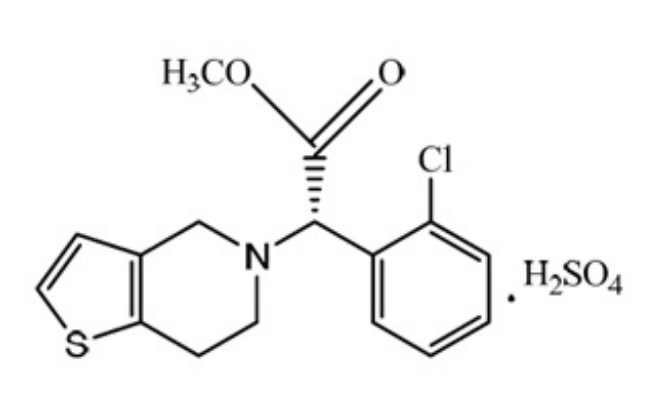
Platelet inhibition by clopidogrel is irreversible and will last for the life of the platelet. Overdose following clopidogrel administration may result in bleeding complications. A single oral dose of clopidogrel at 1,500 or 2,000 mg/kg was lethal to mice and to rats and at 3,000 mg/kg to baboons. Symptoms of acute toxicity were vomiting, prostration, difficult breathing, and gastrointestinal hemorrhage in animals.

Based on biological plausibility, platelet transfusion may restore clotting ability.

11 DESCRIPTION

Clopidogrel tablets, USP are a thienopyridine class inhibitor of P2Y₁₂ ADP platelet receptors. Chemically it is methyl (+)-(S)- α -(o-chlorophenyl)-6,7-dihydrothieno[3,2-c]pyridine-5(4H)-acetate sulfate (1:1). The molecular formula of clopidogrel bisulfate is C₁₆H₁₆ClNO₂S•H₂SO₄ and its molecular weight is 419.9.

The structural formula is as follows:



Clopidogrel bisulfate, USP is a white to off-white powder. It is practically insoluble in water at neutral pH but freely soluble at pH 1. It has a specific optical rotation of about +56°.

Clopidogrel tablets USP, 75 mg for oral administration is provided as pink colored, round shaped, debossed film-coated tablets containing 97.875 mg of clopidogrel bisulfate USP which is the molar equivalent of 75 mg of clopidogrel base.

Each tablet contains hydrogenated castor oil, low substituted-hydroxypropyl cellulose, mannitol, microcrystalline cellulose, and polyethylene glycol 6000, silicon dioxide as inactive ingredients. The pink film coating contains hypromellose, iron oxide red, iron oxide black, lactose monohydrate, titanium dioxide, and triacetin.

12 CLINICAL PHARMACOLOGY

12.1 Mechanism of Action

Clopidogrel is an inhibitor of platelet activation and aggregation through the irreversible binding of its active metabolite to the P2Y₁₂ class of ADP receptors on platelets.

12.2 Pharmacodynamics

Clopidogrel must be metabolized by CYP450 enzymes to produce the active metabolite that inhibits platelet aggregation. The active metabolite of clopidogrel selectively inhibits the binding of adenosine diphosphate (ADP) to its platelet P2Y₁₂ receptor and the subsequent ADP-mediated activation of the glycoprotein GPIIb/IIIa complex, thereby inhibiting platelet aggregation. This action is irreversible. Consequently, platelets exposed to clopidogrel's active metabolite are affected for the remainder of their lifespan (about 7 to 10 days). Platelet aggregation induced by agonists other than ADP is also inhibited by blocking the amplification of platelet activation by released ADP.

Dose-dependent inhibition of platelet aggregation can be seen 2 hours after single oral doses of clopidogrel. Repeated doses of 75 mg clopidogrel per day inhibit ADP-induced platelet aggregation on the first day, and inhibition reaches steady state between Day 3 and Day 7. At steady state, the average inhibition level observed with a dose of 75 mg clopidogrel per day was between 40% and 60%. Platelet aggregation and bleeding time gradually return to baseline values after treatment is discontinued, generally in about 5 days.

Geriatric Patients

Elderly (≥75 years) and young healthy subjects had similar effects on platelet aggregation.

Renally Impaired Patients

After repeated doses of 75 mg clopidogrel per day, patients with severe renal impairment (creatinine clearance from 5 to 15 mL/min) and moderate renal impairment (creatinine clearance from 30 to 60 mL/min) showed low (25%) inhibition of ADP-induced

platelet aggregation.

Hepatically Impaired Patients

After repeated doses of 75 mg clopidogrel per day for 10 days in patients with severe hepatic impairment, inhibition of ADP-induced platelet aggregation was similar to that observed in healthy subjects.

Gender

In a small study comparing men and women, less inhibition of ADP-induced platelet aggregation was observed in women.

12.3 Pharmacokinetics

Clopidogrel is a prodrug and is metabolized to a pharmacologically active metabolite and inactive metabolites.

Absorption

After single and repeated oral doses of 75 mg per day, clopidogrel is rapidly absorbed. Absorption is at least 50%, based on urinary excretion of clopidogrel metabolites.

Effect of food

Clopidogrel can be administered with or without food. In a study in healthy male subjects when clopidogrel 75 mg per day was given with a standard breakfast, mean inhibition of ADP-induced platelet aggregation was reduced by less than 9%. The active metabolite AUC_{0-24} was unchanged in the presence of food, while there was a 57% decrease in active metabolite C_{max} . Similar results were observed when a clopidogrel 300 mg loading dose was administered with a high-fat breakfast.

Metabolism

Clopidogrel is extensively metabolized by two main metabolic pathways: one mediated by esterases and leading to hydrolysis into an inactive carboxylic acid derivative (85% of circulating metabolites) and one mediated by multiple cytochrome P450 enzymes. Cytochromes first oxidize clopidogrel to a 2-oxo-clopidogrel intermediate metabolite. Subsequent metabolism of the 2-oxo clopidogrel intermediate metabolite results in formation of the active metabolite, a thiol derivative of clopidogrel. The active metabolite is formed mostly by CYP2C19 with contributions from several other CYP enzymes, including CYP1A2, CYP2B6 and CYP3A. The active thiol metabolite binds rapidly and irreversibly to platelet receptors, thus inhibiting platelet aggregation for the lifespan of the platelet.

The C_{max} of the active metabolite is twice as high following a single 300 mg clopidogrel loading dose as it is after four days of 75 mg maintenance dose. C_{max} occurs approximately 30 to 60 minutes after dosing. In the 75 to 300 mg dose range, the pharmacokinetics of the active metabolite deviates from dose proportionality: 4-fold the dose results in 2.0-fold and 2.7-fold the C_{max} and AUC, respectively.

Elimination

Following an oral dose of ^{14}C -labeled clopidogrel in humans, approximately 50% of total radioactivity was excreted in urine and approximately 46% in feces over the 5 days post dosing. After a single, oral dose of 75 mg, clopidogrel has a half-life of approximately 6 hours. The half-life of the active metabolite is about 30 minutes.

Drug Interactions

Effect of other drugs on clopidogrel

Clopidogrel is metabolized to its active metabolite in part by CYP2C19.

CYP2C19 inducers

Concomitant use of strong inducers of CYP2C19 results in increased plasma concentration of the active metabolite of clopidogrel and an increase in platelet inhibition.

Rifampin: Coadministration of rifampin 300 mg twice daily for 7 days with 600 mg loading dose of clopidogrel in healthy adults increased the mean AUC and C_{max} of clopidogrel's thiol metabolites by 3.8-fold. Mean inhibition of platelet aggregation at 4 hours post-dose was 34% higher in the presence of rifampin compared to clopidogrel administered alone.

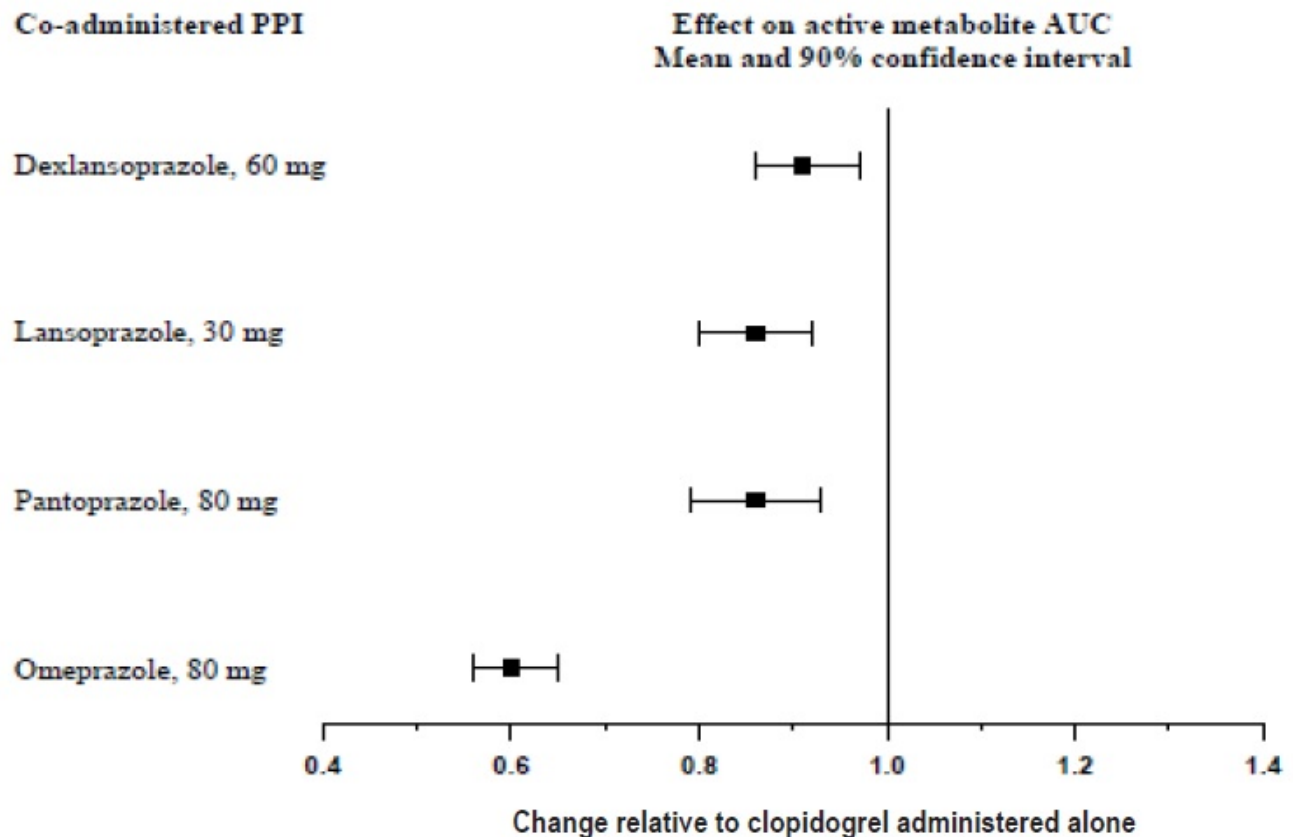
CYP2C19 inhibitors

Concomitant use of certain inhibitors of this enzyme results in reduced plasma concentrations of the active metabolite of clopidogrel and a reduction in platelet inhibition.

Proton pump inhibitors (PPI)

The effect of proton pump inhibitors (PPI) on the systemic exposure to the clopidogrel active metabolite following multiple doses of clopidogrel 75 mg evaluated in dedicated drug interaction studies is presented in Figure 1.

Figure 1: Exposure to Clopidogrel Active Metabolite Following Multiple Doses of Clopidogrel 75 mg Alone or with Proton Pump Inhibitors (PPIs)



Pharmacodynamic and pharmacokinetic parameters measured in these studies showed that the interaction was highest with omeprazole and least with dexlansoprazole.

Opioids

Coadministration of 5 mg intravenous morphine with 600 mg loading dose of clopidogrel in healthy adults decreased the AUC and C_{max} of clopidogrel's thiol metabolites by 34%. Mean platelet aggregation was higher up to 2 to 4 hours with morphine

coadministration.

Effect of clopidogrel on other drugs

In vitro studies have shown that the glucuronide metabolite of clopidogrel is a strong inhibitor of CYP2C8. Concomitant administration of repaglinide with clopidogrel increased the systemic exposure to repaglinide ($AUC_{0-\infty}$) by 5.1-fold following the loading dose (300 mg) and by 3.9-fold on day 3 of the maintenance dose (75 mg) of clopidogrel [see *Drug Interactions (7.6)*].

12.5 Pharmacogenomics

CYP2C19 is involved in the formation of both the active metabolite and the 2-oxo-clopidogrel intermediate metabolite. Clopidogrel active metabolite pharmacokinetics and antiplatelet effects, as measured by *ex vivo* platelet aggregation assays, differ according to CYP2C19 genotype. Patients who are homozygous for nonfunctional alleles of the CYP2C19 gene are termed “CYP2C19 poor metabolizers.” Approximately 2% of White and 4% of Black patients are poor metabolizers; the prevalence of poor metabolism is higher in Asian patients (e.g., 14% of Chinese). Tests are available to identify patients who are CYP2C19 poor metabolizers.

A crossover study in 40 healthy subjects, 10 each in the four CYP2C19 metabolizer groups, evaluated pharmacokinetic and antiplatelet responses using 300 mg followed by 75 mg per day and 600 mg followed by 150 mg per day, each for a total of 5 days. Decreased active metabolite exposure and diminished inhibition of platelet aggregation were observed in the poor metabolizers as compared to the other groups.

Table 3: Active Metabolite Pharmacokinetics and Antiplatelet Responses by CYP2C19 Metabolizer Status

	Dose	Poor (n=10)	Intermediate* (n=10)	Normal (n=10)	Ultrarapid[†] (n=10)
C_{max} (ng/mL)	300 mg (24 h)	11 (4)	23 (11)	32 (21)	24 (10)
	600 mg (24 h)	17 (6)	39 (23)	44 (27)	36 (13)
	75 mg (Day 5)	4 (1)	12 (5)	13 (7)	12 (6)
	150 mg (Day 5)	7 (2)	18 (7)	19 (5)	16 (9)

IPA (%) [‡]	300 mg (24 h)	24 (26)	37 (21)	39 (28)	40 (21)
	600 mg (24 h)	32 (25)	56 (22)	49 (23)	51 (28)
	75 mg (Day 5)	37 (23)	60 (18)	58 (19)	56 (13)
	150 mg (Day 5)	61 (14)	74 (14)	73 (9)	68 (18)
VASP-PRI (%) [§]	300 mg(24 h)	91 (12)	78 (12)	68 (16)	73 (12)
	600 mg (24 h)	85 (14)	56 (26)	48 (20)	51 (20)
	75 mg (Day 5)	83 (13)	50 (16)	39 (14)	40 (9)
	150 mg (Day 5)	61 (18)	29 (11)	24 (10)	20 (10)

* Intermediate metabolizers have one but not two nonfunctional alleles.

† Ultrarapid metabolizers have at least one gain-of-function allele.

‡ Inhibition of platelet aggregation with 5 mM ADP; larger value indicates greater platelet inhibition.

§ Vasodilator-stimulated phosphoprotein – platelet reactivity index; smaller value indicates greater platelet inhibition.

Values are mean (SD).

13 NONCLINICAL TOXICOLOGY

13.1 Carcinogenesis, Mutagenesis, Impairment of Fertility

There was no evidence of tumorigenicity when clopidogrel was administered for 78 weeks to mice and 104 weeks to rats at dosages up to 77 mg/kg per day, which

afforded plasma exposures >25 times that in humans at the recommended daily dose of 75 mg.

Clopidogrel was not genotoxic in four *in vitro* tests (Ames test, DNA-repair test in rat hepatocytes, gene mutation assay in Chinese hamster fibroblasts, and metaphase chromosome analysis of human lymphocytes) and in one *in vivo* test (micronucleus test by oral route in mice).

Clopidogrel was found to have no effect on fertility of male and female rats treated prior to pairing and throughout gestation at oral doses up to 400 mg/kg per day (52 times the recommended human dose on a mg/m² basis).

14 CLINICAL STUDIES

14.1 Acute Coronary Syndrome

CURE

The CURE study included 12,562 patients with ACS without ST-elevation (UA or NSTEMI) and presenting within 24 hours of onset of the most recent episode of chest pain or symptoms consistent with ischemia. Patients were required to have either ECG changes compatible with new ischemia (without ST-elevation) or elevated cardiac enzymes or troponin I or T to at least twice the upper limit of normal.

Patients were randomized to receive clopidogrel (300 mg loading dose followed by 75 mg once daily) or placebo, and were treated for up to one year. Patients also received aspirin (75 to 325 mg once daily) and other standard therapies such as heparin. The use of GPIIb/IIIa inhibitors was not permitted for three days prior to randomization.

The patient population was largely White (82%) and included 38% women, and 52% age ≥65 years of age. Only about 20% of patients underwent revascularization during the initial hospitalization and few underwent emergent or urgent revascularization.

The number of patients experiencing the primary outcome (CV death, MI, or stroke) was 582 (9.3%) in the clopidogrel-treated group and 719 (11.4%) in the placebo-treated group, a 20% relative risk reduction (95% CI of 10%-28%; p <0.001) for the clopidogrel-treated group (see Table 4).

Table 4: Outcome Events in the CURE Primary Analysis

Outcome	Clopidogrel (+ aspirin)* (n=6,259)	Placebo (+ aspirin)* (n=6,303)	Relative Risk Reduction (%) (95% CI)
Primary outcome (Cardiovascular death, MI, stroke)	582 (9.3%)	719 (11.4%)	20% (10.3, 27.9)

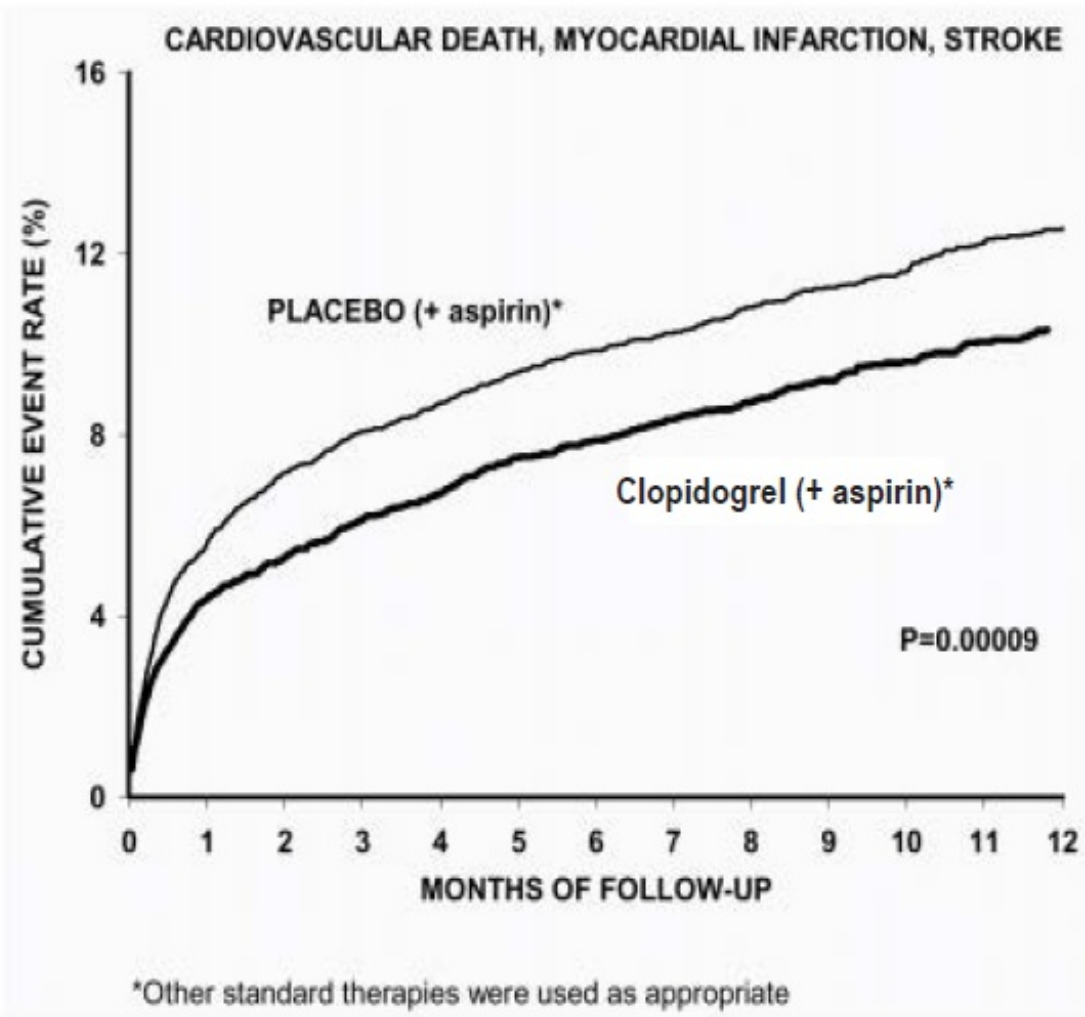
			p <0.001
All Individual Outcome Events:†			
CV death	318 (5.1%)	345 (5.5%)	7% (-7.7, 20.6)
MI	324 (5.2%)	419 (6.6%)	23% (11.0, 33.4)
Stroke	75 (1.2%)	87 (1.4%)	14% (-17.7, 36.6)

* Other standard therapies were used as appropriate.

† The individual components do not represent a breakdown of the primary and coprimary outcomes, but rather the total number of subjects experiencing an event during the course of the study.

Most of the benefit of clopidogrel occurred in the first two months, but the difference from placebo was maintained throughout the course of the trial (up to 12 months) (see Figure 2).

Figure 2: Cardiovascular Death, Myocardial Infarction, and Stroke in the CURE Study



The effect of clopidogrel did not differ significantly in various subgroups, as shown in Figure 3. The benefits associated with clopidogrel were independent of the use of other acute and long-term cardiovascular therapies, including heparin/LMWH, intravenous glycoprotein IIb/IIIa (GPIIb/IIIa) inhibitors, lipid-lowering drugs, beta-blockers, and ACE inhibitors. The efficacy of clopidogrel was observed independently of the dose of aspirin (75 to 325 mg once daily). The use of oral anticoagulants, nonstudy antiplatelet drugs, and chronic NSAIDs was not allowed in CURE.

Figure 3: Hazard Ratio for Patient Baseline Characteristics and On-Study Concomitant Medications/Interventions for the CURE Study

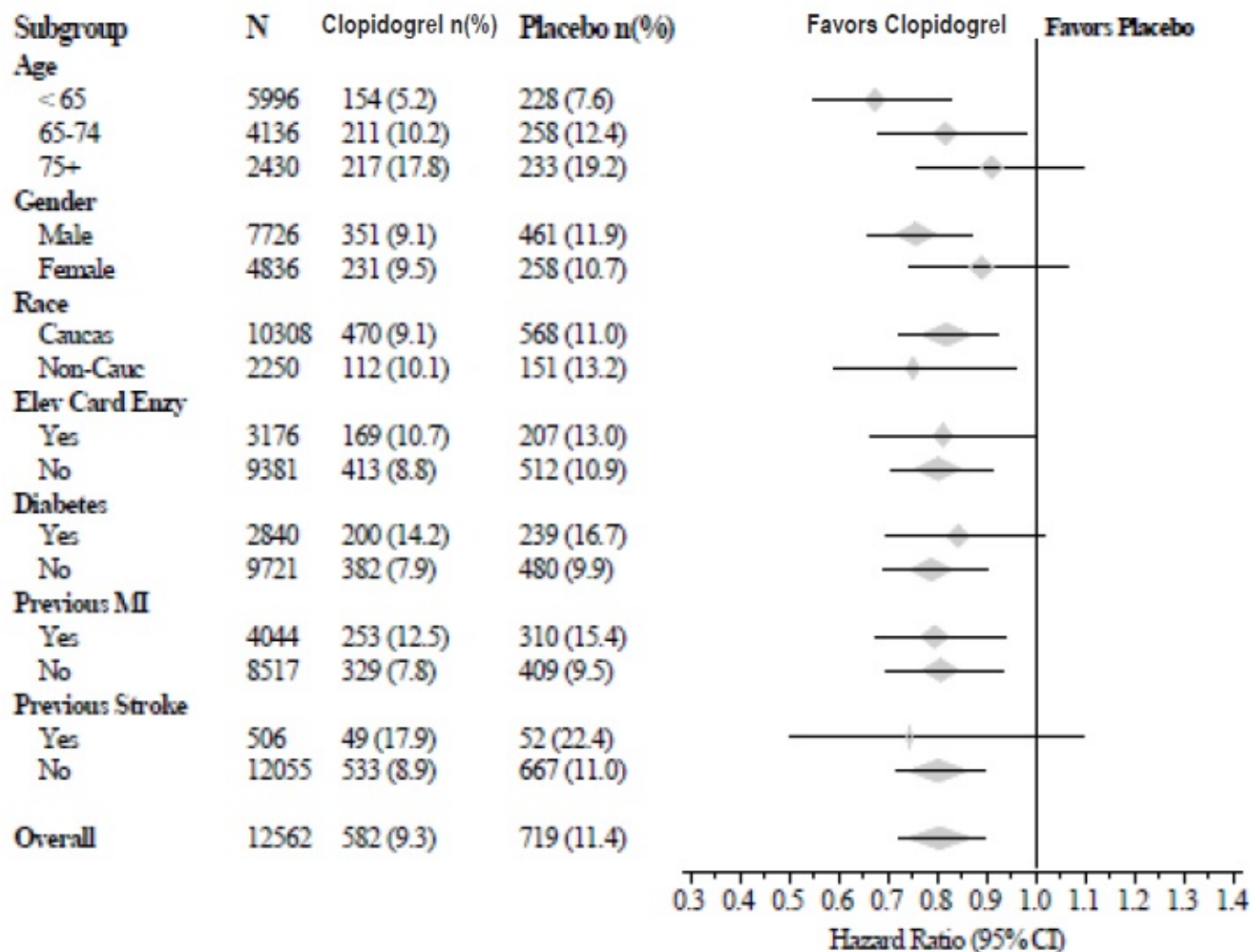
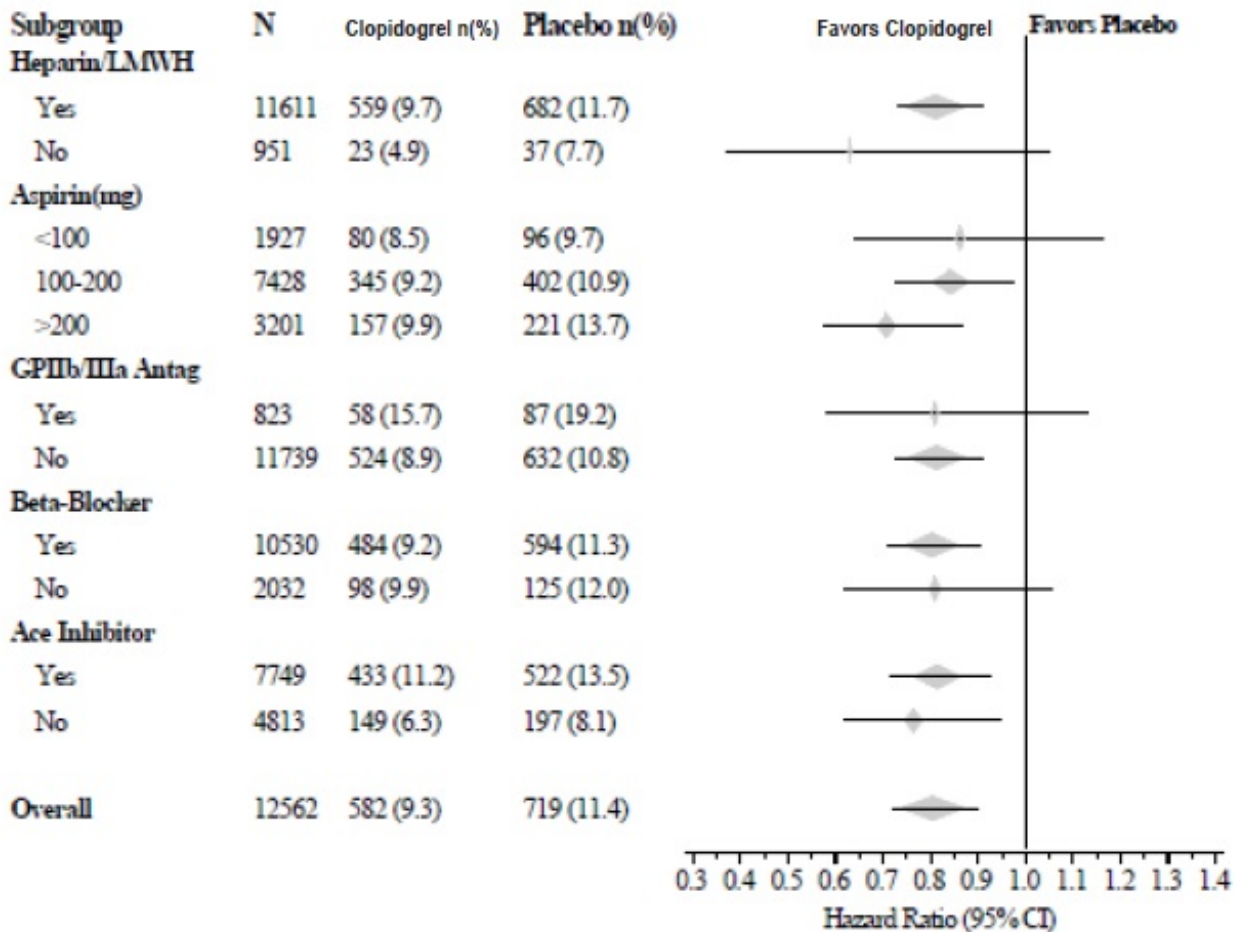


Figure 3: Hazard Ratio for Patient Baseline Characteristics and On-Study Concomitant Medications/Interventions for the CURE Study (continued)



The use of clopidogrel in CURE was associated with a decrease in the use of thrombolytic therapy (71 patients [1.1%] in the clopidogrel group, 126 patients [2.0%] in the placebo group; relative risk reduction of 43%), and GPIIb/IIIa inhibitors (369 patients [5.9%] in the clopidogrel group, 454 patients [7.2%] in the placebo group, relative risk reduction of 18%). The use of clopidogrel in CURE did not affect the number of patients treated with CABG or PCI (with or without stenting) (2,253 patients [36.0%] in the clopidogrel group, 2,324 patients [36.9%] in the placebo group; relative risk reduction of 4.0%).

COMMIT

In patients with STEMI, the safety and efficacy of clopidogrel were evaluated in the randomized, placebo-controlled, double-blind study, COMMIT. COMMIT included 45,852 patients presenting within 24 hours of the onset of the symptoms of myocardial infarction with supporting ECG abnormalities (i.e., ST-elevation, ST-depression or left bundle-branch block). Patients were randomized to receive clopidogrel (75 mg once daily) or placebo, in combination with aspirin (162 mg per day), for 28 days or until hospital discharge, whichever came first.

The primary endpoints were death from any cause and the first occurrence of re-infarction, stroke or death.

The patient population was 28% women and 58% age ≥ 60 years (26% age ≥ 70 years). Fifty-five percent (55%) of patients received thrombolytics and only 3% underwent PCI. As shown in Table 5 and Figure 4 and Figure 5 below, clopidogrel significantly reduced the relative risk of death from any cause by 7% ($p=0.029$), and the relative risk of the

combination of re-infarction, stroke or death by 9% (p=0.002).

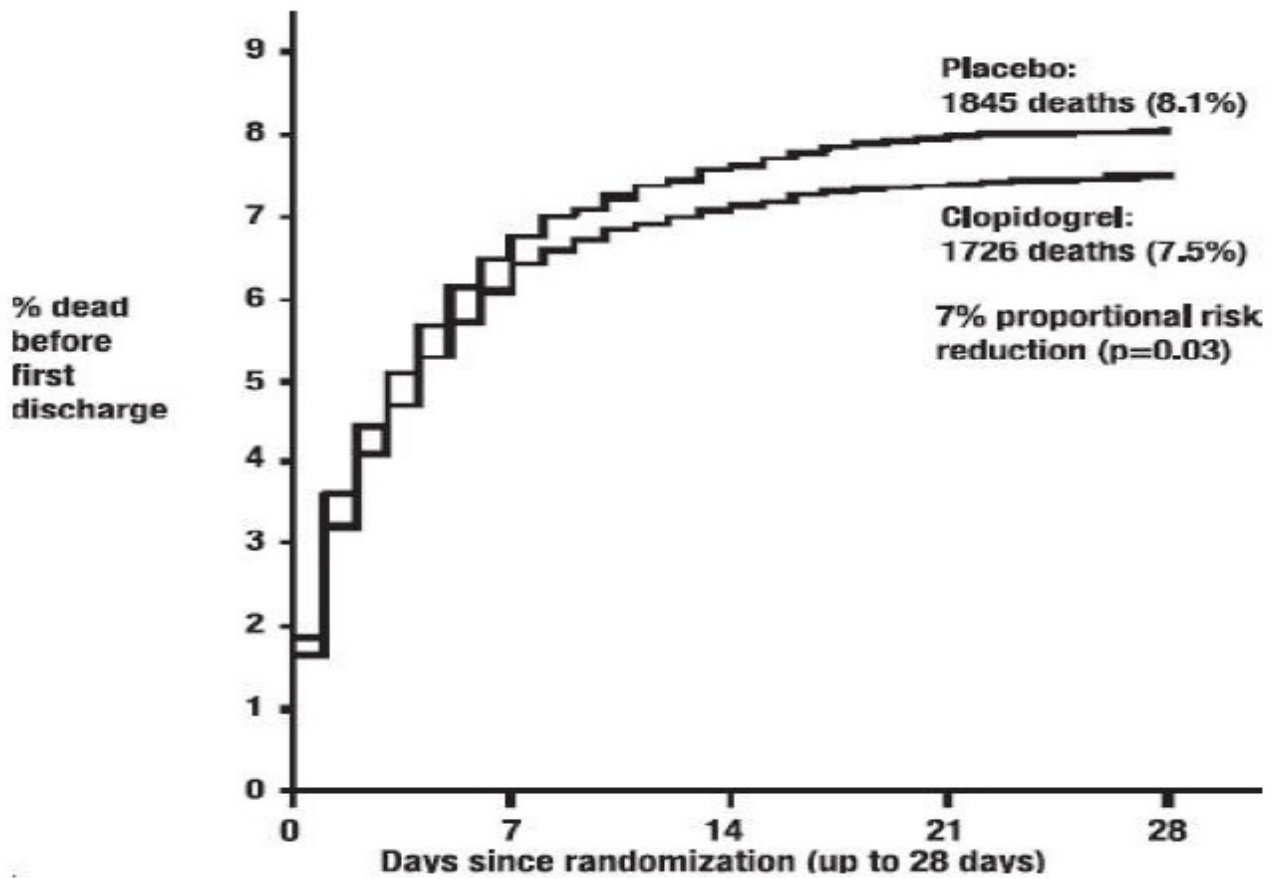
Table 5: Outcome Events in COMMIT

Event	Clopidogrel (+ aspirin) (N=22,961)	Placebo (+ aspirin) (N=22,891)	Odds ratio (95% CI)	p-value
Composite endpoint: Death, MI, or Stroke*	2121 (9.2%)	2310 (10.1%)	0.91 (0.86, 0.97)	0.002
Death	1726 (7.5%)	1845 (8.1%)	0.93 (0.87, 0.99)	0.029
Nonfatal MI [†]	270 (1.2%)	330 (1.4%)	0.81 (0.69, 0.95)	0.011
Nonfatal Stroke [†]	127 (0.6%)	142 (0.6%)	0.89 (0.70, 1.13)	0.33

* 9 patients (2 clopidogrel and 7 placebo) suffered both a nonfatal stroke and a nonfatal MI.

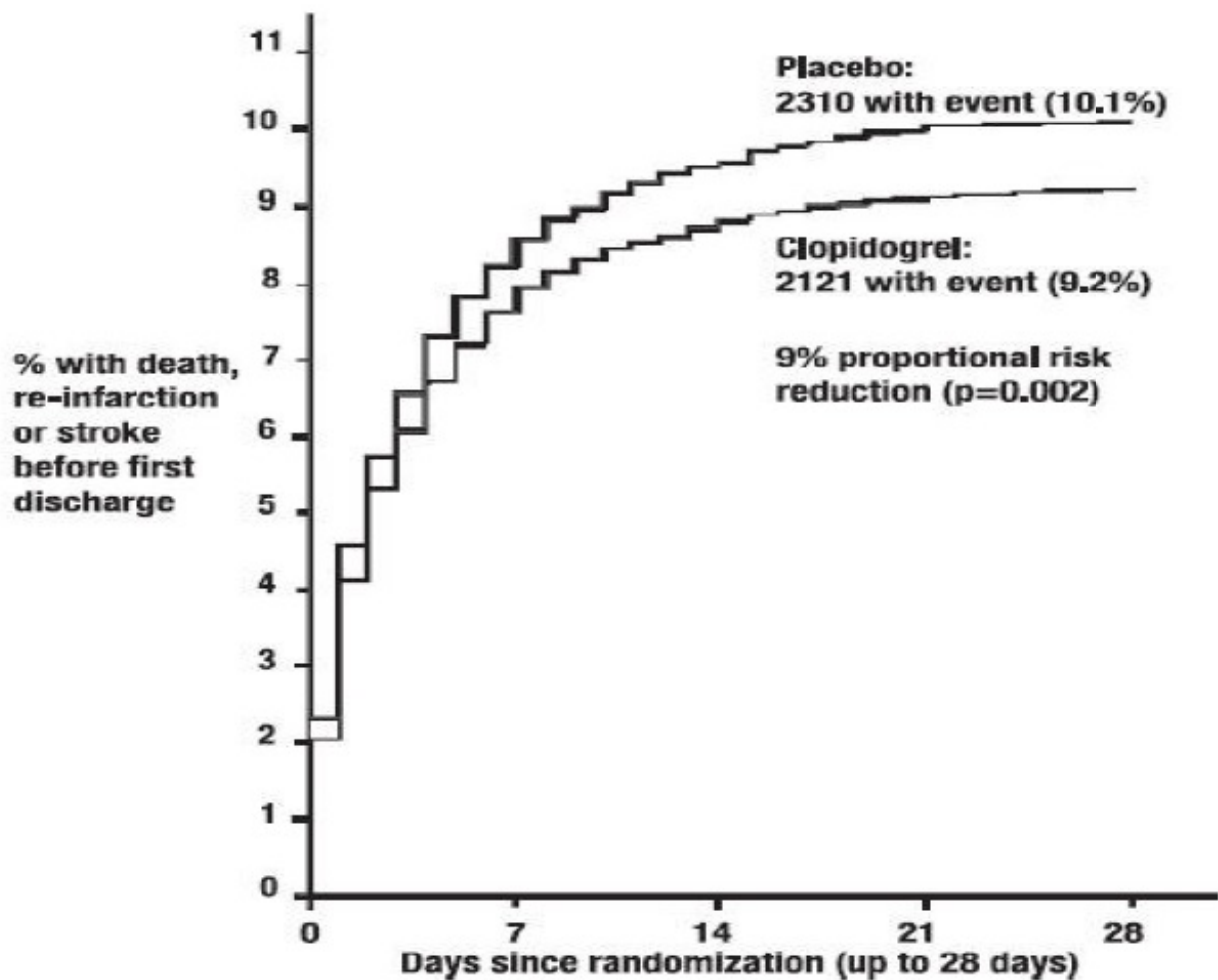
[†] Nonfatal MI and nonfatal stroke exclude patients who died (of any cause).

Figure 4: Cumulative Event Rates for Death in the COMMIT Study*



* All treated patients received aspirin.

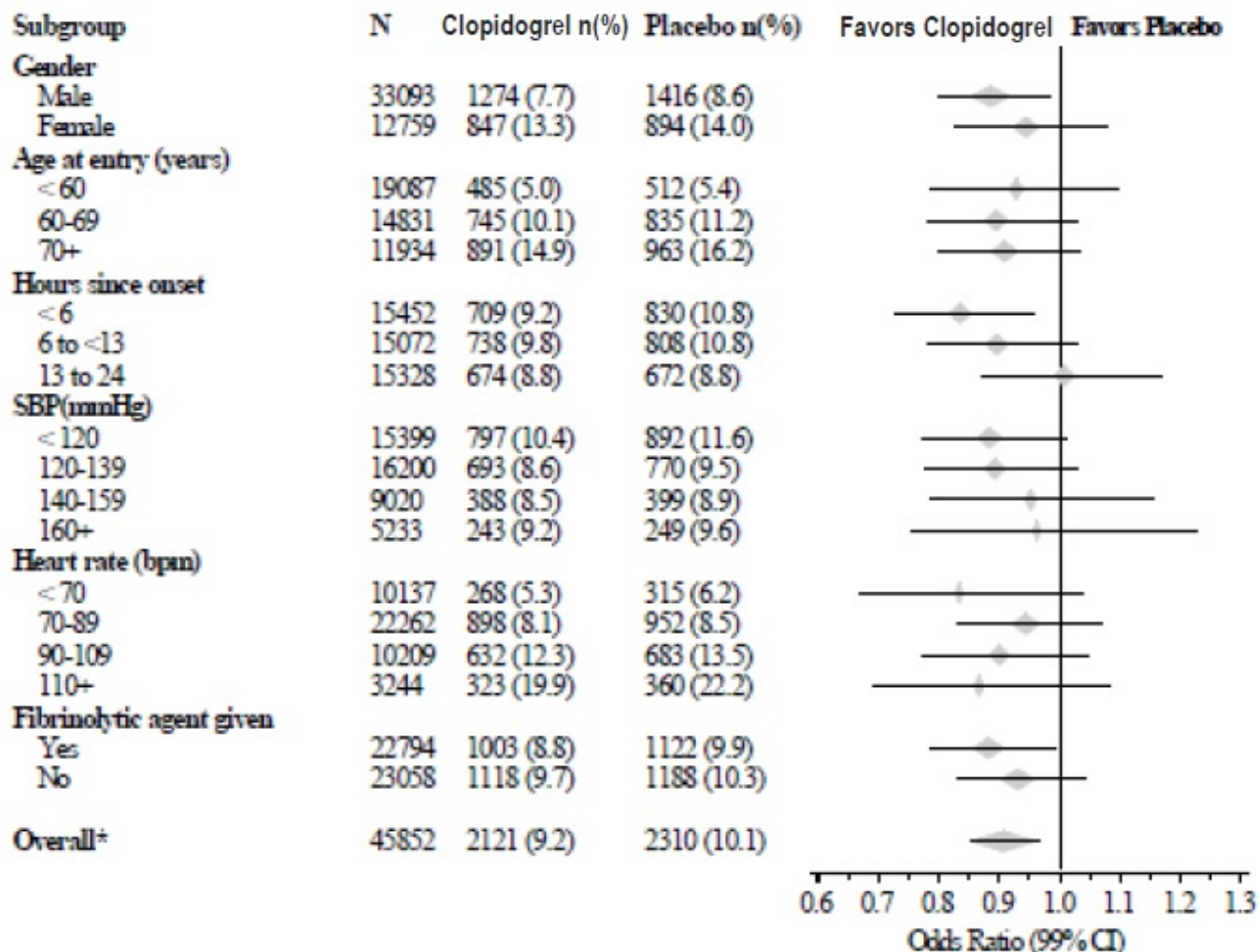
Figure 5: Cumulative Event Rates for the Combined Endpoint Re-Infarction, Stroke or Death in the COMMIT Study*



* All treated patients received aspirin.

The effect of clopidogrel did not differ significantly in various prespecified subgroups as shown in Figure 6. The effect was also similar in non-prespecified subgroups including those based on infarct location, Killip class or prior MI history. Such subgroup analyses should be interpreted cautiously.

Figure 6: Effects of Adding Clopidogrel to Aspirin on the Combined Primary Endpoint across Baseline and Concomitant Medication Subgroups for the COMMIT Study



* CI is 95% for Overall row only.

14.2 Recent Myocardial Infarction, Recent Stroke, or Established Peripheral Arterial Disease

CAPRIE

The CAPRIE trial was a 19,185-patient, 304-center, international, randomized, double-blind, parallel-group study comparing clopidogrel (75 mg daily) to aspirin (325 mg daily). To be eligible to enroll, patients had to have: 1) recent history of myocardial infarction (within 35 days); 2) recent histories of ischemic stroke (within 6 months) with at least a week of residual neurological signs; and/or 3) established peripheral arterial disease (PAD). Patients received randomized treatment for an average of 1.6 years (maximum of 3 years).

The trial's primary outcome was the time to first occurrence of new ischemic stroke (fatal or not), new myocardial infarction (fatal or not), or other vascular death. Deaths not easily attributable to nonvascular causes were all classified as vascular.

Table 6: Outcome Events in the CAPRIE Primary Analysis

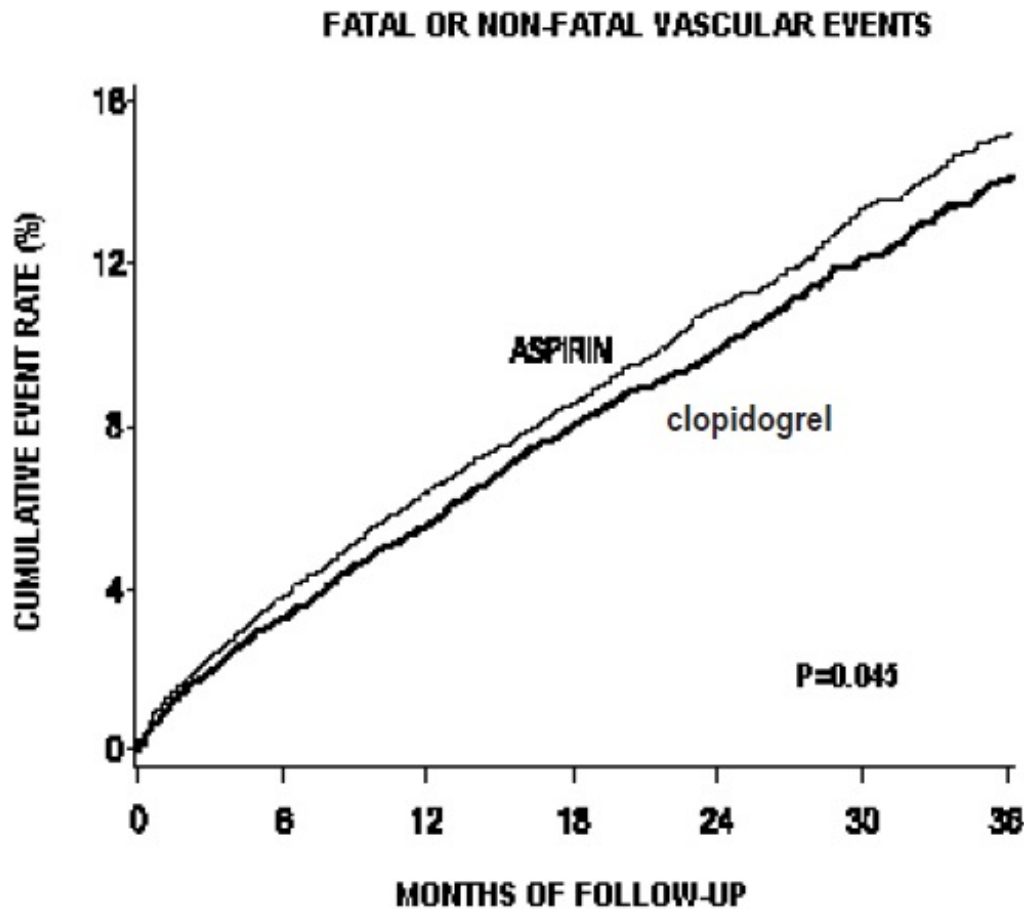
--	--	--

Patients	<u>Clopidogrel</u> n=9,599	<u>Aspirin</u> n=9,586
Ischemic stroke (fatal or not)	438 (4.6%)	461 (4.8%)
MI (fatal or not)	275 (2.9%)	333 (3.5%)
Other vascular death	226 (2.4%)	226 (2.4%)
Total	939 (9.8%)	1020 (10.6%)

As shown in Table 6, clopidogrel was associated with a lower incidence of outcome events, primarily MI. The overall relative risk reduction (9.8% vs 10.6%) was 8.7%, $p=0.045$. Similar results were obtained when all-cause mortality and all-cause strokes were counted instead of vascular mortality and ischemic strokes (risk reduction 6.9%). In patients who survived an on-study stroke or myocardial infarction, the incidence of subsequent events was lower in the clopidogrel group.

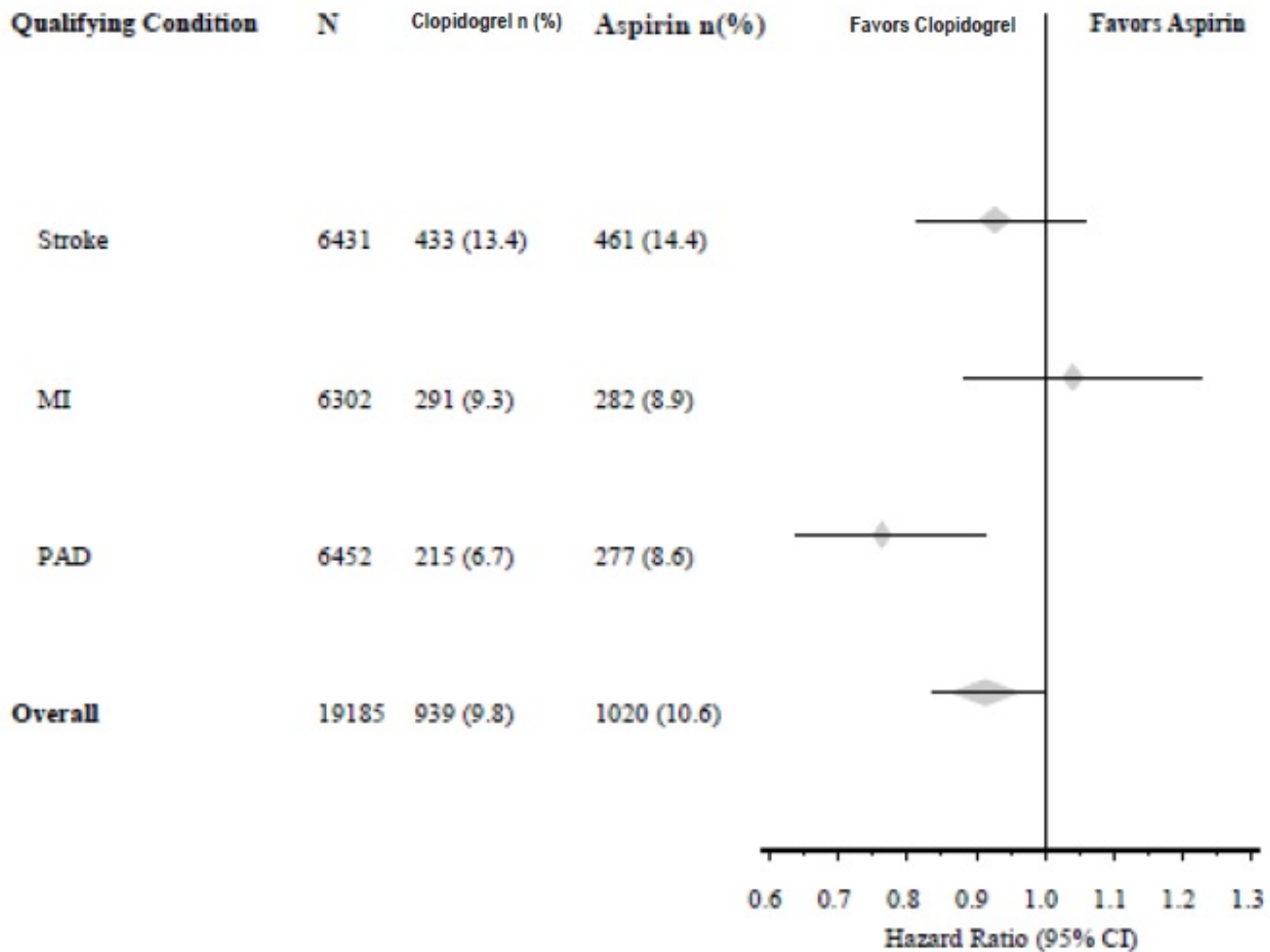
The curves showing the overall event rate are shown in Figure 7. The event curves separated early and continued to diverge over the 3-year follow-up period.

Figure 7: Fatal or Nonfatal Vascular Events in the CAPRIE Study



The statistical significance favoring clopidogrel over aspirin was marginal ($p=0.045$). However, because aspirin is itself effective in reducing cardiovascular events in patients with recent myocardial infarction or stroke, the effect of clopidogrel is substantial. The CAPRIE trial enrolled a population that had recent MI, recent stroke, or PAD. The efficacy of clopidogrel relative to aspirin was heterogeneous across these subgroups ($p=0.043$) (see Figure 8). Nonetheless, this difference may be a chance occurrence because the CAPRIE trial was not designed to evaluate the relative benefit of clopidogrel over aspirin in the individual patient subgroups. The benefit was most apparent in patients who were enrolled because of peripheral arterial disease and less apparent in stroke patients. In patients who were enrolled in the trial on the sole basis of a recent myocardial infarction, clopidogrel was not numerically superior to aspirin.

Figure 8: Hazard Ratio and 95% CI by Baseline Subgroups in the CAPRIE Study



14.3 No Demonstrated Benefit of Clopidogrel plus Aspirin in Patients with Multiple Risk Factors or Established Vascular Disease

CHARISMA

The CHARISMA trial was a 15,603 subject, randomized, double-blind, parallel group study comparing clopidogrel (75 mg daily) to placebo for prevention of ischemic events in patients with vascular disease or multiple risk factors for atherosclerosis. All subjects were treated with aspirin 75 to 162 mg daily. The mean duration of treatment was 23 months. The study failed to demonstrate a reduction in the occurrence of the primary endpoint, a composite of CV death, MI, or stroke. A total of 534 (6.9%) patients in the clopidogrel group versus 573 (7.4%) patients in the placebo group experienced a primary outcome event ($p=0.22$). Bleeding of all severities was more common in the subjects randomized to clopidogrel.

16 HOW SUPPLIED/STORAGE AND HANDLING

Clopidogrel tablets USP, 75 mg are available as pink colored, round shaped, film-coated

tablets debossed with “MC5” on one side and plain on other side. Tablets are provided as follows:

NDC 72205-199-30	Bottles of 30
NDC 72205-199-90	Bottles of 90
NDC 72205-199-05	Bottles of 500
NDC 72205-199-06	Carton of 100 (10 x 10) unit-dose tablets

Store at 25°C (77°F); excursions permitted to 15°C to 30°C (59°F to 86°F) [see USP Controlled Room Temperature].

Preserve in well-closed containers.

17 PATIENT COUNSELING INFORMATION

Advise patients to read FDA approved patient labeling (Medication Guide).

Discontinuation

Advise patients not to discontinue clopidogrel without first discussing it with the healthcare provider who prescribed it [see *Warnings and Precautions (5.3)*].

Bleeding

Advise patients that they:

- will bruise and bleed more easily
- will take longer than usual to stop bleeding
- must report any unanticipated, prolonged, or excessive bleeding, or blood in their stool or urine [see *Warnings and Precautions (5.2)*]

Thrombotic Thrombocytopenic Purpura

Instruct patients to get prompt medical attention if they experience symptoms of TTP that cannot otherwise be explained [see *Warnings and Precautions (5.4)*].

Invasive Procedures

Advise patients to inform physicians and dentists that they are taking clopidogrel before any surgery or dental procedure [see *Warnings and Precautions (5.2, 5.3)*].

Proton Pump Inhibitors

Advise patients not to take omeprazole or esomeprazole while taking clopidogrel. Dexlansoprazole, lansoprazole, and pantoprazole had less pronounced effects on the antiplatelet activity of clopidogrel than did omeprazole or esomeprazole [see *Drug Interactions (7.1)*].

Dispense with Medication Guide available at:

www.NovadozPharma.com/Products

Manufactured by:

MSN Laboratories Private Limited

Telangana - 509 228,

INDIA

Distributed by:

Novadoz Pharmaceuticals LLC

Piscataway, NJ 08854 -3714

Issued on: 08/2023

Dispense with Medication Guide available at:

www.NovadozPharma.com/Products
Medication Guide
Clopidogrel Tablets, USP

(kloe pid' oh grel)

Read this Medication Guide before you start taking clopidogrel tablets and each time you get a refill. There may be new information. This Medication Guide does not take the place of talking with your doctor about your medical condition or your treatment.

What is the most important information I should know about clopidogrel tablets?

1. Clopidogrel tablets may not work as well in people who:

- **have certain genetic factors that affect how the body breaks down clopidogrel.** Your doctor may do genetic tests to make sure clopidogrel tablets are right for you.
- **take certain medicines, especially omeprazole (Prilosec®) or esomeprazole (Nexium®).** Your doctor may change the medicine you take for stomach acid problems while you take clopidogrel tablets.

2. Clopidogrel tablets can cause bleeding which can be serious and can sometimes lead to death. Clopidogrel tablets are a blood thinner medicine that lowers the chance of blood clots forming in your body. While you take clopidogrel tablets:

- you may bruise and bleed more easily
- you are more likely to have nose bleeds
- it will take longer for any bleeding to stop

Call your doctor right away if you have any of these signs or symptoms of bleeding:

- unexpected bleeding or bleeding that lasts a long time
- blood in your urine (pink, red or brown urine)
- red or black stools (looks like tar)
- bruises that happen without a known cause or get larger
- cough up blood or blood clots
- vomit blood or your vomit looks like coffee grounds

Do not stop taking clopidogrel tablets without talking to the doctor who prescribes it for you. People who stop taking clopidogrel tablets too soon have a higher risk of having a heart attack or dying. If you must stop clopidogrel tablets because of bleeding, your risk of a heart attack may be higher.

What are clopidogrel tablets?

Clopidogrel tablets are a prescription medicine used to treat people who have any of the following:

- chest pain due to heart problems

- poor circulation in their legs (peripheral arterial disease)
- a heart attack
- a stroke

Clopidogrel tablets are used alone or with aspirin to lower your chance of having another serious problem with your heart or blood vessels such as heart attack, stroke, or blood clot that can lead to death.

Platelets are blood cells that help your blood clot normally. Clopidogrel tablets helps to prevent platelets from sticking together and forming a clot that can block an artery. It is not known if clopidogrel tablets are safe and effective in children.

Who should not take clopidogrel tablets?

Do not take clopidogrel tablets if you:

- currently have a condition that causes bleeding, such as a stomach ulcer
- are allergic to clopidogrel or other ingredients in clopidogrel tablets. See the end of this leaflet for a complete list of ingredients in clopidogrel tablets.

What should I tell my doctor before taking clopidogrel tablets?

Before you take clopidogrel tablets, tell your doctor if you:

- have a history of bowel (gastrointestinal) or stomach ulcers.
- have a history of bleeding problems.
- plan to have surgery or a dental procedure. See **“How should I take clopidogrel tablets?”**
- are pregnant or plan to become pregnant. It is not known if clopidogrel tablets will harm your unborn baby.
- are breastfeeding or plan to breastfeed. It is not known if clopidogrel passes into your breast milk. A decision should be made with your healthcare provider to avoid or discontinue breastfeeding when continuing clopidogrel tablets is needed.
- have had an allergy or reaction to any medicine used to treat your disease.

Tell all of your doctors and your dentist that you are taking clopidogrel tablets. They should talk to the doctor who prescribed clopidogrel tablets for you before you have any surgery or invasive procedure.

Tell your doctor about all the medicines you take, including prescription, non--prescription medicines, vitamins and herbal supplements.

Clopidogrel tablets may affect the way other medicines work, and other medicines may affect how clopidogrel tablets works. See **“What is the most important information I should know about clopidogrel tablets?”**

Clopidogrel tablets may increase blood levels of other medicines such as repaglinide (Prandin®). Taking clopidogrel tablets with certain other medicines may increase your risk of bleeding.

Especially tell your doctor if you take:

- aspirin, especially if you have had a stroke. Always talk to your doctor about whether you should take aspirin along with clopidogrel tablets to treat your condition.

- nonsteroidal anti-inflammatory drugs (NSAIDs). Ask your doctor or pharmacist for a list of NSAID medicines if you are not sure.
- warfarin (Coumadin[®], Jantoven[®]).
- selective serotonin reuptake inhibitors (SSRIs) and serotonin norepinephrine reuptake inhibitors (SNRIs). Ask your doctor or pharmacist for a list of SSRI or SNRI medicines if you are not sure.
- rifampin (used to treat severe infections)
- other antiplatelet agents

Know the medicines you take. Keep a list of them to show your doctor or pharmacist when you get a new medicine.

How should I take clopidogrel tablets?

- Take clopidogrel tablets exactly as your doctor tells you.
- Do not change your dose or stop taking clopidogrel tablets without talking to your doctor first. Stopping clopidogrel tablets may increase your risk of heart attack or stroke.
- Take clopidogrel tablets with aspirin as instructed by your doctor.
- If you miss a dose, take clopidogrel tablets as soon as you remember. If it is almost time for your next dose, skip the missed dose. Take the next dose at your regular time. Do not take 2 doses of clopidogrel tablets at the same time unless your doctor tells you to.
- If you take too much clopidogrel tablets, call your doctor or go to the nearest emergency room right away.
- Talk with your doctor about stopping your clopidogrel tablets before you have surgery. Your doctor may tell you to stop taking clopidogrel tablets at least 5 days before you have surgery to avoid excessive bleeding during surgery.

What are the possible side effects of clopidogrel tablets?

Clopidogrel tablets can cause serious side effects including:

- See **“What is the most important information I should know about clopidogrel tablets?”**
- **A blood clotting problem called Thrombotic Thrombocytopenic Purpura (TTP).** TTP can happen with clopidogrel tablets, sometimes after a short time (less than 2 weeks). TTP is a blood clotting problem where blood clots form in blood vessels; and can happen anywhere in the body. TTP needs to be treated in a hospital right away because it may cause death. Get medical help right away if you have any of these symptoms and they cannot be explained by another medical condition:
- purplish spots (called purpura) on the skin or in the mouth (mucous membranes) due to bleeding under the skin
- your skin or the whites of your eyes are yellow (jaundice)
- you feel tired or weak
- your skin looks very pale
- fever
- fast heart rate or feeling short of breath
- headache

- speech changes
- confusion
- coma
- stroke
- seizure
- low amount of urine, or urine that is pink or has blood in it
- stomach area (abdominal) pain
- nausea, vomiting, or diarrhea
- vision changes
- persistent low blood sugar symptoms

Tell your doctor if you have any side effect that bothers you or that does not go away. Tell your doctor if you develop an allergic reaction including skin reactions while taking clopidogrel tablets.

These are not all the possible side effects of clopidogrel tablets. For more information, ask your doctor or pharmacist.

Call your doctor for medical advice about side effects. You may report side effects to FDA at 1-800-FDA-1088.

How should I store clopidogrel tablets?

- Store clopidogrel tablets at 59°F to 86°F (15°C to 30°C).

Keep clopidogrel tablets and all medicines out of the reach of children.

General information about clopidogrel tablets

Medicines are sometimes used for purposes other than those listed in a Medication Guide. Do not take clopidogrel tablets for a condition for which it was not prescribed. Do not give clopidogrel tablets to other people, even if they have the same symptoms that you have. It may harm them.

This Medication Guide summarizes the most important information about clopidogrel tablets. If you would like more information, talk to your doctor. Ask your doctor or pharmacist for information about clopidogrel tablets that was written for healthcare professionals.

For more information, www.novadozpharma.com or call 1-855-668-2369.

What are the ingredients in clopidogrel tablets?

Active ingredient: clopidogrel bisulfate, USP

Inactive ingredients:

Tablet: hydrogenated castor oil, low substituted-hydroxypropyl cellulose, mannitol, microcrystalline cellulose, and polyethylene glycol 6000, silicon dioxide.

Film coating: hypromellose, iron oxide red, iron oxide black, lactose monohydrate, titanium dioxide, and triacetin.

The brands listed are trademarks or registered trademarks of their respective owners and are not affiliated with and do not endorse Novadoz Pharmaceuticals LLC.

This Medication Guide has been approved by the U.S. Food and Drug Administration.

Manufactured by:
MSN Laboratories Private Limited
Telangana - 509 228,
INDIA

Distributed by:
Novadoz Pharmaceuticals LLC
Piscataway, NJ 08854 -3714

Issued on: 08/2023

PACKAGE LABEL.PRINCIPAL DISPLAY PANEL

Clopidogrel-75mg-30s-Count-Container-Label

Rx Only NDC 72205-199-30

**Clopidogrel
Tablets, USP**

75 mg

PHARMACIST: Dispense the accompanying Medication Guide to each patient.

30 Tablets

NOVADOZ[®]
VALUE IN EVERY DOSE

Each film-coated tablet contains 97.875 mg of clopidogrel bisulfate, USP equivalent to 75 mg of clopidogrel base.

Usual dosage: See Prescribing Information.
Preserve in well-closed container.

Store at 25°C (77°F); excursions permitted to 15° to 30°C (59° to 86°F) [see USP Controlled Room Temperature].
Keep this and all medicines out of the reach of children.

Print Medication Guides at:
www.NovadozPharma.com/Products

Manufactured by: MSN Laboratories Private Limited
Telangana- 509 228, INDIA.

Distributed by: Novadoz Pharmaceuticals LLC
Piscataway, NJ 08854-3714
TEL: 855 - NOVADOZ
(668-2369)

D071624-01
Issued: 12/2023

M.L.No.: 5/MN/TS/2014/F/G

72205199309

Clopidogrel-75mg-90s-Count-Container-Label

Rx Only NDC 72205-199-90

**Clopidogrel
Tablets, USP**

75 mg

PHARMACIST: Dispense the accompanying Medication Guide to each patient.

90 Tablets

NOVADOZ[®]
VALUE IN EVERY DOSE

Each film-coated tablet contains 97.875 mg of clopidogrel bisulfate, USP equivalent to 75 mg of clopidogrel base.

Usual dosage: See Prescribing Information.

Preserve in well-closed container.
Store at 25°C (77°F); excursions permitted to 15° to 30°C (59° to 86°F) [see USP Controlled Room Temperature].
Keep this and all medicines out of the reach of children.

Print Medication Guides at:
www.NovadozPharma.com/Products

Manufactured by:
MSN Laboratories Private Limited
Telangana- 509 228, INDIA.

Distributed by:
Novadoz Pharmaceuticals LLC
Piscataway, NJ 08854-3714
TEL: 855 - NOVADOZ
(668-2369)

D071625-01
Issued: 12/2023

M.L. No.: 5/MN/TS/2014/F/G

3 72205 19990 3

Clopidogrel-75mg-500s-Count-Container-Label

Rx Only NDC 72205-199-05

**Clopidogrel
Tablets, USP**

75 mg

PHARMACIST: Dispense the accompanying Medication Guide to each patient.

500 Tablets

NOVADOZ[®]
VALUE IN EVERY DOSE

Each film-coated tablet contains 97.875 mg of clopidogrel bisulfate, USP equivalent to 75 mg of clopidogrel base.

Usual dosage: See Prescribing Information.

Preserve in well-closed container.
Store at 25°C (77°F); excursions permitted to 15° to 30°C (59° to 86°F) [see USP Controlled Room Temperature].
Keep this and all medicines out of the reach of children.

Print Medication Guides at:
www.NovadozPharma.com/Products

Manufactured by:
MSN Laboratories Private Limited
Telangana- 509 228, INDIA.

Distributed by:
Novadoz Pharmaceuticals LLC
Piscataway, NJ 08854-3714
TEL: 855 - NOVADOZ
(668-2369)

M.L. No.: 5/MN/TS/2014/F/G
Issued: 12/2023

D071626-01

3 72205 19905 7

Clopidogrel-75mg-100s-Blister-Carton-Label



Clodogrel-75mg-10s-Blister-Foil-Label



CLOPIDOGREL

clopidogrel bisulfate tablet, film coated

Product Information

Product Type	HUMAN PRESCRIPTION DRUG	Item Code (Source)	NDC:72205-199
Route of Administration	ORAL		

Active Ingredient/Active Moiety

Ingredient Name	Basis of Strength	Strength
CLOPIDOGREL BISULFATE (UNII: 08179HTP27) (CLOPIDOGREL - UNII:A74586SNO7)	CLOPIDOGREL	75 mg

Inactive Ingredients

Ingredient Name	Strength
HYDROGENATED CASTOR OIL (UNII: ZF94AP8MEY)	

LOW-SUBSTITUTED HYDROXYPROPYL CELLULOSE, UNSPECIFIED (UNII: 2165RE0K14)
MANNITOL (UNII: 3OWL53L36A)
MICROCRYSTALLINE CELLULOSE 112 (UNII: X7XJ6RM9Q2)
SILICON DIOXIDE (UNII: ETJ7Z6XBU4)
FERRIC OXIDE RED (UNII: 1K09F3G675)
FERROSFERRIC OXIDE (UNII: XM0M87F357)
LACTOSE MONOHYDRATE (UNII: EWQ57Q8I5X)
TITANIUM DIOXIDE (UNII: 15FIX9V2JP)
TRIACETIN (UNII: XHX3C3X673)
HYPROMELLOSE 2910 (15 MPA.S) (UNII: 36SFW2JZ0W)
POLYETHYLENE GLYCOL 6000 (UNII: 30IQX730WE)

Product Characteristics

Color	PINK	Score	no score
Shape	ROUND (Biconvex)	Size	9mm
Flavor		Imprint Code	MC5
Contains			

Packaging

#	Item Code	Package Description	Marketing Start Date	Marketing End Date
1	NDC:72205-199-30	30 in 1 BOTTLE; Type 0: Not a Combination Product	11/22/2024	
2	NDC:72205-199-90	90 in 1 BOTTLE; Type 0: Not a Combination Product	11/22/2024	
3	NDC:72205-199-05	500 in 1 BOTTLE; Type 0: Not a Combination Product	11/22/2024	
4	NDC:72205-199-06	10 in 1 CARTON	11/22/2024	
4	NDC:72205-199-11	10 in 1 BLISTER PACK; Type 0: Not a Combination Product		

Marketing Information

Marketing Category	Application Number or Monograph Citation	Marketing Start Date	Marketing End Date
ANDA	ANDA215388	09/20/2024	

Labeler - Novadoz Pharmaceuticals LLC (081109687)

Establishment

Name	Address	ID/FEI	Business Operations
MSN LABORATORIES PRIVATE LIMITED		650786952	ANALYSIS(72205-199) , MANUFACTURE(72205-199)