

**RENU LABORATORIES ACNE SULPHUR L- acne sulfur lotion suspension**  
**Renu Laboratories, Inc.**

*Disclaimer: Most OTC drugs are not reviewed and approved by FDA, however they may be marketed if they comply with applicable regulations and policies. FDA has not evaluated whether this product complies.*

-----  
**Sulfur Lotion**

**Active Ingredient**

*Sulfur Colloidal (10%)*

**Purpose**

*Topical Acne Treatment*

**Uses**

- for the treatment of acne
- healing and drying acne breakouts
- helps clear acne pimples, blackheads or whiteheads and allows skin to heal
- penetrates pores to control acne blemishes
- helps keep skin clear of new acne pimples

**Warnings**

**For external use only**

- skin irritation and dryness is more likely to occur if you use another topical acne medication at the same time.  
If irritation occurs, only use one topical acne medication at a time.

**Do Not Use**

- on broken skin
- on large areas of the skin
- if pregnant or breast-feeding, ask a health professional before use.

**When using this product**

- apply only to areas with acne

**Stop use and ask a doctor if**

- excessive dryness or peeling occurs

**Keep out of reach of children.**

If swallowed get medical help or contact a Poison Control Center right away.

**Directions**

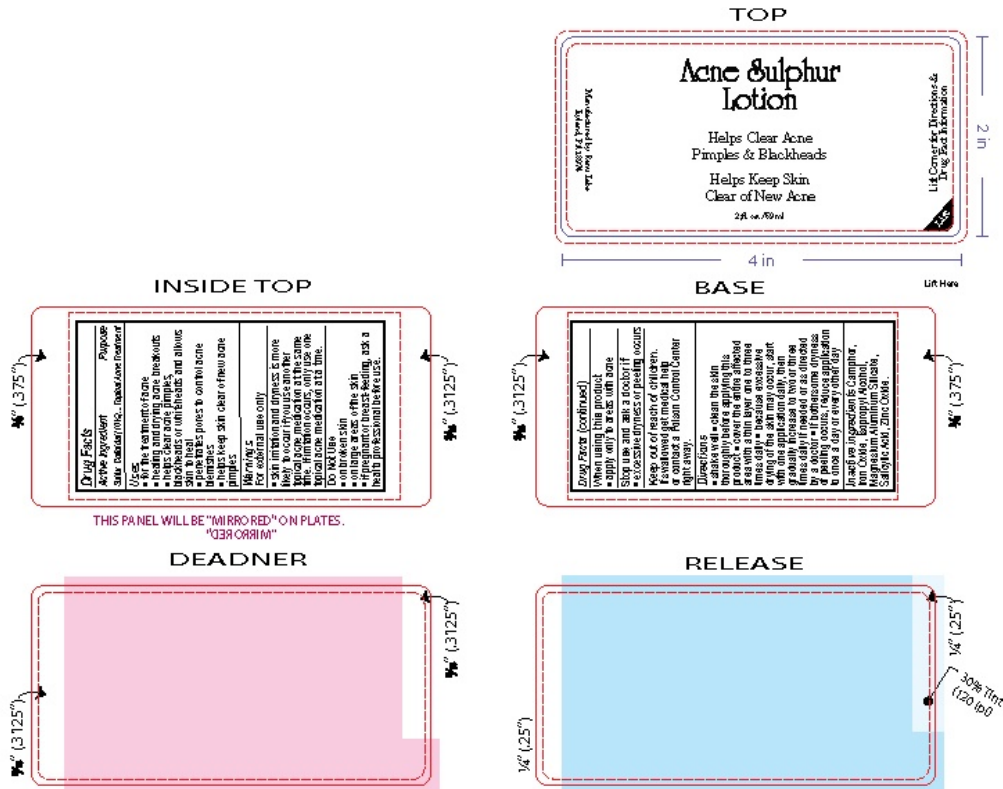
- shake well
- clean the skin thoroughly before applying this product
- cover the entire affected area with a thin layer one to three times daily
- because excessive drying of the skin may occur, start with one application daily, then gradually increase to two or three times daily if needed or as directed

by a doctor

- if bothersome dryness or peeling occurs, reduce application to once a day or every other day

### Inactive ingredients

Camphor, Iron Oxide, Isopropyl Alcohol, Magnesium Aluminum Silicate, Salicylic Acid, Zinc Oxide.



## RENU LABORATORIES ACNE SULPHUR L

acne sulfur lotion suspension

### Product Information

<b>Product Type</b>	HUMAN OTC DRUG	<b>Item Code (Source)</b>	NDC:76348-450
<b>Route of Administration</b>	TOPICAL		

### Active Ingredient/Active Moiety

Ingredient Name	Basis of Strength	Strength
<b>SULFUR</b> (UNII: 70FD1KFU70) (SULFUR - UNII: 70FD1KFU70)	SULFUR	1.4 g in 14 g

### Inactive Ingredients

Ingredient Name	Strength
<b>FERRIC OXIDE RED</b> (UNII: 1K09F3G675)	
<b>WATER</b> (UNII: 059QF0KO0R)	
<b>MAGNESIUM ALUMINUM SILICATE</b> (UNII: 6M3P64V0NC)	
<b>ZINC OXIDE</b> (UNII: SOI2LOH54Z)	

<b>SALICYLIC ACID</b> (UNII: O414PZ4LPZ)	
<b>CAMPHOR (SYNTHETIC)</b> (UNII: 5TJD82A1ET)	
<b>ISOPROPYL ALCOHOL</b> (UNII: ND2M416302)	

### Product Characteristics

<b>Color</b>	white (Suspension)	<b>Score</b>	
<b>Shape</b>		<b>Size</b>	
<b>Flavor</b>		<b>Imprint Code</b>	
<b>Contains</b>			

### Packaging

#	Item Code	Package Description	Marketing Start Date	Marketing End Date
1	NDC:76348-450-02	56 g in 1 BOTTLE, GLASS; Type 0: Not a Combination Product	04/16/2015	

### Marketing Information

Marketing Category	Application Number or Monograph Citation	Marketing Start Date	Marketing End Date
OTC monograph final	part333D	04/16/2015	

**Labeler** - Renu Laboratories, Inc. (945739449)

### Establishment

Name	Address	ID/FEI	Business Operations
Renu Laboratories, Inc.		945739449	manufacture(76348-450)

Revised: 1/2022

Renu Laboratories, Inc.