

RITONAVIR - ritonavir tablet, film coated

Aurobindo Pharma Limited

HIGHLIGHTS OF PRESCRIBING INFORMATION

These highlights do not include all the information needed to use RITONAVIR TABLETS safely and effectively. See full prescribing information for RITONAVIR TABLETS.

RITONAVIR tablets, for oral use

Initial U.S. Approval: 1996

WARNING: DRUG-DRUG INTERACTIONS LEADING TO POTENTIALLY SERIOUS AND/OR LIFE THREATENING REACTIONS

See full prescribing information for complete boxed warning

Co-administration of ritonavir with several classes of drugs including sedative hypnotics, antiarrhythmics, or ergot alkaloid preparations may result in potentially serious and/or life-threatening adverse events due to possible effects of ritonavir on the hepatic metabolism of certain drugs. Review medications taken by patients prior to prescribing ritonavir or when prescribing other medications to patients already taking ritonavir. (4, 5.1)

----- RECENT MAJOR CHANGES -----

Contraindications (4)

8/2019

----- INDICATIONS AND USAGE -----

Ritonavir tablets are HIV protease inhibitors indicated in combination with other antiretroviral agents for the treatment of HIV-1 infection (1)

----- DOSAGE AND ADMINISTRATION -----

- Adult patients: 600 mg twice-day with meals (2.3)
- Pediatrics patients: The recommended twice daily dose for children greater than one month of age is based on body surface area and should not exceed 600 mg twice daily with meals (2.4)
- Ritonavir oral solution should not be administered to neonates before a postmenstrual age (first day of the mother's last menstrual period to birth plus the time elapsed after birth) of 44 weeks has been attained (2.4, 5.2)
- Ritonavir oral powder can only be used for dosing increments of 100 mg (2.4)
- Dose modification for ritonavir tablet is necessary when used with other protease inhibitors (2.6)

----- DOSAGE FORMS AND STRENGTHS -----

- Tablet: 100 mg (3)

----- CONTRAINDICATIONS -----

- Ritonavir tablets are contraindicated in patients with known hypersensitivity to ritonavir (e.g., toxic epidermal necrolysis, Stevens-Johnson syndrome) or any of its ingredients (4)
- Co-administration with drugs highly dependent on CYP3A for clearance and for which elevated plasma concentrations may be associated with serious and/or life-threatening events (4)
- Co-administration with drugs that significantly reduce ritonavir (4)

----- WARNINGS AND PRECAUTIONS -----

The following have been observed in patients receiving ritonavir:

- The concomitant use of ritonavir and certain other drugs may result in known or potentially significant drug interactions. Consult the full prescribing information prior to and during treatment for potential drug interactions. (5.1, 7.2)
- Toxicity in preterm neonates: Ritonavir oral solution should not be used in preterm neonates in the immediate postnatal period because of possible toxicities. A safe and effective dose of ritonavir oral solution in this patient population has not been established (2.4, 5.2)
- Hepatotoxicity: Fatalities have occurred. Monitor liver function before and during therapy, especially in patients with underlying hepatic disease, including hepatitis B and hepatitis C, or marked transaminase elevations (5.3, 8.6)
- Pancreatitis: Fatalities have occurred; suspend therapy as clinically appropriate (5.4)
- Allergic Reactions/Hypersensitivity: Allergic reactions have been reported and include anaphylaxis, toxic epidermal necrolysis, Stevens-Johnson syndrome, bronchospasm and angioedema. Discontinue treatment if severe reactions develop (5.5, 6.2)
- PR interval prolongation may occur in some patients. Cases of second and third degree heart block have been reported. Use with caution with patients with preexisting conduction system disease, ischemic heart disease, cardiomyopathy,

- underlying structural heart disease or when administering with other drugs that may prolong the PR interval (5.6, 12.3)
- Total cholesterol and triglycerides elevations: Monitor prior to therapy and periodically thereafter (5.7)
 - Patients may develop new onset or exacerbations of diabetes mellitus, hyperglycemia (5.8)
 - Patients may develop immune reconstitution syndrome (5.9)
 - Patients may develop redistribution/accumulation of body fat (5.10)
 - Hemophilia: Spontaneous bleeding may occur, and additional factor VIII may be required (5.11)

----- **ADVERSE REACTIONS** -----

The most frequently reported adverse drug reactions among patients receiving ritonavir alone or in combination with other antiretroviral drugs were gastrointestinal (including diarrhea, nausea, vomiting, abdominal pain (upper and lower), neurological disturbances (including paresthesia and oral paresthesia), rash, and fatigue/asthenia (6.1)

To report SUSPECTED ADVERSE REACTIONS, contact Aurobindo Pharma USA, Inc. at 1-866-850-2876 or FDA at 1-800-FDA-1088 or www.fda.gov/medwatch.

----- **DRUG INTERACTIONS** -----

- Co-administration of ritonavir can alter the concentrations of other drugs. The potential for drug-drug interactions must be considered prior to and during therapy (4, 5.1, 7, 12.3)

----- **USE IN SPECIFIC POPULATIONS** -----

- Lactation: Women infected with HIV should be instructed not to breastfeed due to the potential for HIV transmission (8.2).

See 17 for PATIENT COUNSELING INFORMATION and FDA-approved patient labeling.

Revised: 9/2019

FULL PRESCRIBING INFORMATION: CONTENTS*

WARNING: DRUG-DRUG INTERACTIONS LEADING TO POTENTIALLY SERIOUS AND/OR LIFE THREATENING REACTIONS

1 INDICATIONS AND USAGE

2 DOSAGE AND ADMINISTRATION

- 2.1 General Administration Recommendations
- 2.3 Dosage Recommendations in Adults
- 2.4 Dosage Recommendations in Pediatric Patients
- 2.6 Dose Modification due to Drug Interaction

3 DOSAGE FORMS AND STRENGTHS

4 CONTRAINDICATIONS

5 WARNINGS AND PRECAUTIONS

- 5.1 Risk of Serious Adverse Reactions Due to Drug Interactions
- 5.2 Toxicity in Preterm Neonates
- 5.3 Hepatotoxicity
- 5.4 Pancreatitis
- 5.5 Allergic Reactions/Hypersensitivity
- 5.6 PR Interval Prolongation
- 5.7 Lipid Disorders
- 5.8 Diabetes Mellitus/Hyperglycemia
- 5.9 Immune Reconstitution Syndrome
- 5.10 Fat Redistribution
- 5.11 Patients with Hemophilia
- 5.12 Resistance/Cross-resistance
- 5.13 Laboratory Tests

6 ADVERSE REACTIONS

- 6.1 Clinical Trial Experience
- 6.2 Postmarketing Experience

7 DRUG INTERACTIONS

- 7.1 Potential for Ritonavir to Affect Other Drugs
- 7.2 Established and Other Potentially Significant Drug Interactions

8 USE IN SPECIFIC POPULATIONS

- 8.1 Pregnancy
- 8.2 Lactation
- 8.3 Females and Males of Reproductive Potential
- 8.4 Pediatric Use
- 8.5 Geriatric Use
- 8.6 Hepatic Impairment

10 OVERDOSAGE

11 DESCRIPTION

12 CLINICAL PHARMACOLOGY

- 12.1 Mechanism of Action
- 12.2 Pharmacodynamics
- 12.3 Pharmacokinetics
- 12.4 Microbiology

13 NONCLINICAL TOXICOLOGY

- 13.1 Carcinogenesis, Mutagenesis, Impairment of Fertility

14 CLINICAL STUDIES

- 14.1 Advanced Patients with Prior Antiretroviral Therapy
- 14.2 Patients without Prior Antiretroviral Therapy

15 REFERENCES

16 HOW SUPPLIED/STORAGE AND HANDLING

17 PATIENT COUNSELING INFORMATION

* Sections or subsections omitted from the full prescribing information are not listed.

FULL PRESCRIBING INFORMATION

WARNING: DRUG-DRUG INTERACTIONS LEADING TO POTENTIALLY SERIOUS AND/OR LIFE THREATENING REACTIONS

Co-administration of ritonavir with several classes of drugs including sedative hypnotics, antiarrhythmics, or ergot alkaloid preparations may result in potentially serious and/or life-threatening adverse events due to possible effects of ritonavir on the hepatic metabolism of certain drugs. Review medications taken by patients prior to prescribing ritonavir or when prescribing other medications to patients already taking ritonavir [see Contraindications (4), Warnings and Precautions (5.1)].

1 INDICATIONS AND USAGE

Ritonavir tablets are indicated in combination with other antiretroviral agents for the treatment of HIV-1 infection.

2 DOSAGE AND ADMINISTRATION

2.1 General Administration Recommendations

- Ritonavir tablets must be used in combination with other antiretroviral agents.
- Ritonavir tablets are administered orally. Ritonavir tablets should be swallowed whole, and not

chewed, broken or crushed. Take ritonavir tablets with meals.

General Dosing Guidelines

Patients who take the 600 mg twice daily soft gel capsule ritonavir dose may experience more gastrointestinal side effects such as nausea, vomiting, abdominal pain or diarrhea when switching from the soft gel capsule to the tablet formulation because of greater maximum plasma concentration (C_{max}) achieved with the tablet formulation relative to the soft gel capsule [see *Clinical Pharmacology (12.3)*]. Patients should also be aware that these adverse events (gastrointestinal or paresthesias) may diminish as therapy is continued.

2.3 Dosage Recommendations in Adults

Recommended Dosage for Treatment of HIV-1:

The recommended dosage of ritonavir is 600 mg twice daily by mouth to be taken with meals. Use of a dose titration schedule may help to reduce treatment-emergent adverse events while maintaining appropriate ritonavir plasma levels. Ritonavir tablets should be started at no less than 300 mg twice daily and increased at 2 to 3 day intervals by 100 mg twice daily. The maximum dose of 600 mg twice daily should not be exceeded upon completion of the titration [see *Dosage and Administration (2.6)*].

Pregnant Women

Ritonavir oral solution is not recommended during pregnancy due to its ethanol content. Ritonavir oral solution contains the excipients ethanol and propylene glycol [see *Use in Specific Populations (8.1)*].

2.4 Dosage Recommendations in Pediatric Patients

Ritonavir tablets must be used in combination with other antiretroviral agents [see *Dosage and Administration (2)*]. The recommended dosage of ritonavir tablets in pediatric patients older than 1 month is 350 to 400 mg per m^2 twice daily by mouth to be taken with meals and should not exceed 600 mg twice daily. Ritonavir tablets should be started at 250 mg per m^2 twice daily and increased at 2 to 3 day intervals by 50 mg per m^2 twice daily. If patients do not tolerate 400 mg per m^2 twice daily due to adverse events, the highest tolerated dose may be used for maintenance therapy in combination with other antiretroviral agents, however, alternative therapy should be considered [see *Dosage and Administration (2.6)*].

Pediatric Dosage Guidelines for Oral Solution

Ritonavir oral solution should not be administered to neonates before a postmenstrual age (first day of the mother's last menstrual period to birth plus the time elapsed after birth) of 44 weeks has been attained [see *Warnings and Precautions (5.2)*].

Ritonavir oral solution contains the excipients ethanol and propylene glycol. Special attention should be given to accurate calculation of the dose of ritonavir oral solution, transcription of the medication order, dispensing information and dosing instructions to minimize the risk for medication errors, and overdose. This is especially important for young children. Total amounts of ethanol and propylene glycol from all medicines that are to be given to pediatric patients 1 to 6 months of age should be taken into account in order to avoid toxicity from these excipients [see *Warnings and Precautions (5.2)* and *Overdosage (10)*]. When possible, dose should be administered using a calibrated dosing syringe.

Table 1. Pediatric Dosage Guidelines for Oral Solution*

Body Surface Area (m ²)	Twice Daily Dose 250 mg per m ²	Twice Daily Dose 300 mg per m ²	Twice Daily Dose 350 mg per m ²	Twice Daily Dose 400 mg per m ²
0.20	0.6 mL (50 mg)	0.75 mL (60 mg)	0.9 mL (70 mg)	1 mL (80 mg)
0.25	0.8 mL (62.5 mg)	0.9 mL (75 mg)	1.1 mL (87.5 mg)	1.25 mL (100 mg)
0.50	1.6 mL (125 mg)	1.9 mL (150 mg)	2.2 mL (175 mg)	2.5 mL (200 mg)
0.75	2.3 mL (187.5 mg)	2.8 mL (225 mg)	3.3 mL (262.5 mg)	3.75 mL (300 mg)
1.00	3.1 mL (250 mg)	3.75 mL (300 mg)	4.4 mL (350 mg)	5 mL (400 mg)
1.25	3.9 mL (312.5 mg)	4.7 mL (375 mg)	5.5 mL (437.5 mg)	6.25 mL (500 mg)
1.50	4.7 mL (375 mg)	5.6 mL (450 mg)	6.6 mL (525 mg)	7.5 mL (600 mg)

*The concentration of the oral solution is 80 mg per mL.

Body surface area (BSA) can be calculated as follows¹:

$$BSA (m^2) = \sqrt{\frac{Ht (Cm) \times Wt (kg)}{3600}}$$

Pediatric Dosage Guidelines for Oral Powder

Ritonavir oral powder should be used only for dosing increments of 100 mg. Ritonavir powder should not be used for doses less than 100 mg or for incremental doses between 100 mg intervals. Ritonavir oral solution is the preferred formulation for patients requiring doses less than 100 mg or incremental doses between 100 mg intervals.

2.6 Dose Modification due to Drug Interaction

Dose reduction of ritonavir tablet is necessary when used with other protease inhibitors: atazanavir, darunavir, fosamprenavir, saquinavir, and tipranavir.

Prescribers should consult the full prescribing information and clinical study information of these protease inhibitors if they are co-administered with a reduced dose of ritonavir [see *Warnings and Precautions (5.1)*, and *Drug Interactions (7)*].

3 DOSAGE FORMS AND STRENGTHS

Ritonavir tablets USP, 100 mg are white to off-white, film-coated, ovaloid tablets, debossed with 'Z' on one side and '24' on other side.

4 CONTRAINDICATIONS

- When co-administering ritonavir tablets with other protease inhibitors, see the full prescribing information for that protease inhibitor including contraindication information.
- Ritonavir tablets are contraindicated in patients with known hypersensitivity (e.g., toxic epidermal

necrolysis (TEN) or Stevens-Johnson syndrome) to ritonavir or any of its ingredients.

- Ritonavir tablets are contraindicated with drugs that are highly dependent on CYP3A for clearance and for which elevated plasma concentrations are associated with serious and/or life-threatening reactions [see *Drug Interactions (7.1) and Clinical Pharmacology (12.3)*].

- Alpha 1- Adrenoreceptor Antagonist : alfuzosin
- Antianginal: ranolazine
- Antiarrhythmics: amiodarone, dronedarone, flecainide, propafenone, quinidine
- Antifungal: voriconazole
- Anti-gout: colchicine
- Antipsychotics: lurasidone, pimozide
- Ergot Derivatives: dihydroergotamine, ergotamine, methylergonovine
- GI Motility Agent: cisapride
- HMG-CoA Reductase Inhibitors: lovastatin, simvastatin
- Microsomal triglyceride transfer protein (MTTP) Inhibitor: lomitapide
- PDE5 Inhibitor: sildenafil (Revatio[®]) when used for the treatment of pulmonary arterial

hypertension

- Sedative/Hypnotics: triazolam, orally administered midazolam
- Ritonavir tablets are contraindicated with drugs that are potent CYP3A inducers where significantly reduced ritonavir plasma concentrations may be associated with the potential for loss of virologic response and possible resistance and cross-resistance [see *Drug Interactions (7.2) and Clinical Pharmacology (12.3)*].
- Herbal Products: St. John's Wort (*hypericum perforatum*)

5 WARNINGS AND PRECAUTIONS

5.1 Risk of Serious Adverse Reactions Due to Drug Interactions

Initiation of ritonavir, a CYP3A inhibitor, in patients receiving medications metabolized by CYP3A or initiation of medications metabolized by CYP3A in patients already receiving ritonavir, may increase plasma concentrations of medications metabolized by CYP3A. Initiation of medications that inhibit or induce CYP3A may increase or decrease concentrations of ritonavir, respectively. These interactions may lead to:

- Clinically significant adverse reactions, potentially leading to severe, life-threatening, or fatal events from greater exposures of concomitant medications.
- Clinically significant adverse reactions from greater exposures of ritonavir.
- Loss of therapeutic effect of ritonavir and possible development of resistance.

When co-administering ritonavir with other protease inhibitors, see the full prescribing information for that protease inhibitor including important Warnings and Precautions.

See Table 4 for steps to prevent or manage these possible and known significant drug interactions, including dosing recommendations [see *Drug Interactions (7)*]. Consider the potential for drug interactions prior to and during ritonavir therapy; review concomitant medications during ritonavir therapy, and monitor for the adverse reactions associated with the concomitant medications [see *Contraindications (4) and Drug Interactions (7)*].

5.2 Toxicity in Preterm Neonates

Ritonavir oral solution contains the excipients ethanol and propylene glycol. When administered concomitantly with propylene glycol, ethanol competitively inhibits the metabolism of propylene

glycol, which may lead to elevated concentrations. Preterm neonates may be at an increased risk of propylene glycol-associated adverse events due to diminished ability to metabolize propylene glycol, thereby leading to accumulation and potential adverse events. Postmarketing life-threatening cases of cardiac toxicity (including complete AV block, bradycardia, and cardiomyopathy), lactic acidosis, acute renal failure, CNS depression and respiratory complications leading to death have been reported, predominantly in preterm neonates receiving lopinavir/ritonavir oral solution which also contains the excipients ethanol and propylene glycol.

Ritonavir oral solution should not be used in preterm neonates in the immediate postnatal period because of possible toxicities. However, if the benefit of using ritonavir oral solution to treat HIV infection in infants immediately after birth outweighs the potential risks, infants should be monitored closely for increases in serum osmolality and serum creatinine, and for toxicity related to ritonavir oral solution including: hyperosmolality, with or without lactic acidosis, renal toxicity, CNS depression (including stupor, coma, and apnea), seizures, hypotonia, cardiac arrhythmias and ECG changes, and hemolysis. Total amounts of ethanol and propylene glycol from all medicines that are to be given to infants should be taken into account in order to avoid toxicity from these excipients [see *Dosage and Administration (2.4)* and *Overdosage (10)*].

5.3 Hepatotoxicity

Hepatic transaminase elevations exceeding 5 times the upper limit of normal, clinical hepatitis, and jaundice have occurred in patients receiving ritonavir alone or in combination with other antiretroviral drugs (see Table 3). There may be an increased risk for transaminase elevations in patients with underlying hepatitis B or C. Therefore, caution should be exercised when administering ritonavir to patients with pre-existing liver diseases, liver enzyme abnormalities, or hepatitis. Increased AST/ALT monitoring should be considered in these patients, especially during the first three months of ritonavir treatment [see *Use in Specific Populations (8.6)*].

There have been postmarketing reports of hepatic dysfunction, including some fatalities. These have generally occurred in patients taking multiple concomitant medications and/or with advanced AIDS.

5.4 Pancreatitis

Pancreatitis has been observed in patients receiving ritonavir therapy, including those who developed hypertriglyceridemia. In some cases fatalities have been observed. Patients with advanced HIV disease may be at increased risk of elevated triglycerides and pancreatitis [see *Warnings and Precautions (5.7)*]. Pancreatitis should be considered if clinical symptoms (nausea, vomiting, abdominal pain) or abnormalities in laboratory values (such as increased serum lipase or amylase values) suggestive of pancreatitis should occur. Patients who exhibit these signs or symptoms should be evaluated and ritonavir therapy should be discontinued if a diagnosis of pancreatitis is made.

5.5 Allergic Reactions/Hypersensitivity

Allergic reactions including urticaria, mild skin eruptions, bronchospasm, and angioedema have been reported. Cases of anaphylaxis, toxic epidermal necrolysis (TEN), and Stevens-Johnson syndrome have also been reported. Discontinue treatment if severe reactions develop.

5.6 PR Interval Prolongation

Ritonavir prolongs the PR interval in some patients. Post marketing cases of second or third degree atrioventricular block have been reported in patients.

Ritonavir should be used with caution in patients with underlying structural heart disease, preexisting conduction system abnormalities, ischemic heart disease, cardiomyopathies, as these patients may be at increased risk for developing cardiac conduction abnormalities.

The impact on the PR interval of co-administration of ritonavir with other drugs that prolong the PR interval (including calcium channel blockers, beta-adrenergic blockers, digoxin and atazanavir) has not been evaluated. As a result, co-administration of ritonavir with these drugs should be undertaken with caution, particularly with those drugs metabolized by CYP3A. Clinical monitoring is recommended [see *Drug Interactions (7)* and *Clinical Pharmacology (12.3)*].

5.7 Lipid Disorders

Treatment with ritonavir therapy alone or in combination with saquinavir has resulted in substantial increases in the concentration of total cholesterol and triglycerides [see *Adverse Reactions (6.1)*]. Triglyceride and cholesterol testing should be performed prior to initiating ritonavir therapy and at periodic intervals during therapy. Lipid disorders should be managed as clinically appropriate, taking into account any potential drug-drug interactions with ritonavir and HMG CoA reductase inhibitors [see *Contraindications (4)* and *Drug Interactions (7)*].

5.8 Diabetes Mellitus/Hyperglycemia

New onset diabetes mellitus, exacerbation of pre-existing diabetes mellitus, and hyperglycemia have been reported during postmarketing surveillance in HIV-infected patients receiving protease inhibitor therapy. Some patients required either initiation or dose adjustments of insulin or oral hypoglycemic agents for treatment of these events. In some cases, diabetic ketoacidosis has occurred. In those patients who discontinued protease inhibitor therapy, hyperglycemia persisted in some cases. Because these events have been reported voluntarily during clinical practice, estimates of frequency cannot be made and a causal relationship between protease inhibitor therapy and these events has not been established. Consider monitoring for hyperglycemia, new onset diabetes mellitus, or an exacerbation of diabetes mellitus in patients treated with ritonavir.

5.9 Immune Reconstitution Syndrome

Immune reconstitution syndrome has been reported in HIV-infected patients treated with combination antiretroviral therapy, including ritonavir. During the initial phase of combination antiretroviral treatment, patients whose immune system responds may develop an inflammatory response to indolent or residual opportunistic infections (such as *Mycobacterium avium* infection, cytomegalovirus, *Pneumocystis jiroveci* pneumonia, or tuberculosis), which may necessitate further evaluation and treatment.

Autoimmune disorders (such as Graves' disease, polymyositis, and Guillain-Barré syndrome) have also been reported to occur in the setting of immune reconstitution, however, the time to onset is more variable, and can occur many months after initiation of treatment.

5.10 Fat Redistribution

Redistribution/accumulation of body fat including central obesity, dorsocervical fat enlargement (buffalo hump), peripheral wasting, facial wasting, breast enlargement, and "cushingoid appearance" have been observed in patients receiving antiretroviral therapy. The mechanism and long-term consequences of these events are currently unknown. A causal relationship has not been established.

5.11 Patients with Hemophilia

There have been reports of increased bleeding, including spontaneous skin hematomas and hemarthrosis, in patients with hemophilia type A and B treated with protease inhibitors. In some patients additional factor VIII was given. In more than half of the reported cases, treatment with protease inhibitors was continued or reintroduced. A causal relationship between protease inhibitor therapy and these events has not been established.

5.12 Resistance/Cross-resistance

Varying degrees of cross-resistance among protease inhibitors have been observed. Continued administration of ritonavir 600 mg twice daily following loss of viral suppression may increase the likelihood of cross-resistance to other protease inhibitors [see *Microbiology (12.4)*].

5.13 Laboratory Tests

Ritonavir has been shown to increase triglycerides, cholesterol, SGOT (AST), SGPT (ALT), GGT, CPK, and uric acid. Appropriate laboratory testing should be performed prior to initiating ritonavir therapy and at periodic intervals or if any clinical signs or symptoms occur during therapy.

6 ADVERSE REACTIONS

The following adverse reactions are discussed in greater detail in other sections of the labeling.

- Drug Interactions [see *Warnings and Precautions (5.1)*]
- Hepatotoxicity [see *Warnings and Precautions (5.3)*]
- Pancreatitis [see *Warnings and Precautions (5.4)*]
- Allergic Reactions/Hypersensitivity [see *Warnings and Precautions (5.5)*]

When co-administering ritonavir with other protease inhibitors, see the full prescribing information for that protease inhibitor including adverse reactions.

6.1 Clinical Trial Experience

Because clinical trials are conducted under widely varying conditions, adverse reactions rates observed in the clinical trials of a drug cannot be directly compared to rates in the clinical trials of another drug and may not reflect the rates observed in practice.

Adverse Reactions in Adults

The safety of ritonavir alone and in combination with other antiretroviral agents was studied in 1,755 adult patients. Table 2 lists treatment-emergent Adverse Reactions (with possible or probable relationship to study drug) occurring in greater than or equal to 1% of adult patients receiving ritonavir in combined Phase II/IV studies.

The most frequently reported adverse drug reactions among patients receiving ritonavir alone or in combination with other antiretroviral drugs were gastrointestinal (including diarrhea, nausea, vomiting, abdominal pain (upper and lower)), neurological disturbances (including paresthesia and oral paresthesia), rash, and fatigue/asthenia.

Table 2. Treatment-Emergent Adverse Reactions (With Possible or Probable Relationship to Study Drug) Occurring in greater than or equal to 1% of Adult Patients Receiving Ritonavir in Combined Phase II/IV Studies (N = 1,755)

Adverse Reactions	n	%
Eye disorders		
Blurred vision	113	6.4
Gastrointestinal disorders		
Abdominal Pain (upper and lower)*	464	26.4
Diarrhea including severe with electrolyte imbalance*	1,192	67.9
Dyspepsia	201	11.5
Flatulence	142	8.1
Gastrointestinal hemorrhage*	41	2.3

Gastroesophageal reflux disease (GERD)	19	1.1
Nausea	1,007	57.4
Vomiting*	559	31.9
General disorders and administration site conditions		
Fatigue including asthenia*	811	46.2
Hepatobiliary disorders		
Blood bilirubin increased (including jaundice)*	25	1.4
Hepatitis (including increased AST, ALT, GGT)*	153	8.7
Immune system disorders		
Hypersensitivity including urticaria and face edema*	114	8.2
Metabolism and nutrition disorders		
Edema and peripheral edema*	110	6.3
Gout*	24	1.4
Hypercholesterolemia*	52	3.0
Hypertriglyceridemia*	158	9.0
Lipodystrophy acquired*	51	2.9
Musculoskeletal and connective tissue disorders		
Arthralgia and back pain*	326	18.6
Myopathy/creatine phosphokinase increased*	66	3.8
Myalgia	156	8.9
Nervous system disorders		
Dizziness*	274	15.6
Dysgeusia*	285	16.2
Paresthesia (including oral paresthesia)*	889	50.7
Peripheral neuropathy	178	10.1
Syncope*	58	3.3
Psychiatric disorders		
Confusion*	52	3.0
Disturbance in attention	44	2.5
Renal and urinary disorders		
Increased urination*	74	4.2
Respiratory, thoracic and mediastinal disorders		
Coughing*	380	21.7
Oropharyngeal Pain*	279	15.9
Skin and subcutaneous tissue disorders		
Acne*	67	3.8
Pruritus*	214	12.2
Rash (includes erythematous and maculopapular)*	475	27.1
Vascular disorders		
Flushing, feeling hot*	232	13.2
Hypertension*	58	3.3
Hypotension including orthostatic hypotension*	30	1.7
Peripheral coldness*	21	1.2

* Represents a medical concept including several similar MedDRA PTs

Laboratory Abnormalities in Adults

Table 3 shows the percentage of adult patients who developed marked laboratory abnormalities.

Table 3. Percentage of Adult Patients, by Study and Treatment Group, with Chemistry and Hematology Abnormalities Occurring in greater than 3% of Patients Receiving Ritonavir

Variable	Limit	Study 245 Naive Patients			Study 247 Advanced Patients		Study 462 PI-Naive Patients
		Ritonavir plus Zidovudine	Ritonavir	Zidovudine	Ritonavir	Placebo	Ritonavir plus Saquinavir
Chemistry	High						
Cholesterol	> 240 mg/dL	30.7	44.8	9.3	36.5	8.0	65.2
CPK	> 1000 IU/L	9.6	12.1	11.0	9.1	6.3	9.9
GGT	> 300 IU/L	1.8	5.2	1.7	19.6	11.3	9.2
SGOT (AST)	> 180 IU/L	5.3	9.5	2.5	6.4	7.0	7.8
SGPT (ALT)	> 215 IU/L	5.3	7.8	3.4	8.5	4.4	9.2
Triglycerides	> 800 mg/dL	9.6	17.2	3.4	33.6	9.4	23.4
Triglycerides	> 1500 mg/dL	1.8	2.6	-	12.6	0.4	11.3
Triglycerides Fasting	> 1500 mg/dL	1.5	1.3	-	9.9	0.3	-
Uric Acid	> 12 mg/dL	-	-	-	3.8	0.2	1.4
Hematology	Low						
Hematocrit	< 30%	2.6	-	0.8	17.3	22.0	0.7
Hemoglobin	< 8.0 g/dL	0.9	-	-	3.8	3.9	-
Neutrophils	≤ 0.5 x 10 ⁹ /L	-	-	-	6.0	8.3	-
RBC	< 3.0 x 10 ¹² /L	1.8	-	5.9	18.6	24.4	-
WBC	< 2.5 x 10 ⁹ /L	-	0.9	6.8	36.9	59.4	3.5

- Indicates no events reported.

Adverse Reactions in Pediatric Patients

Ritonavir has been studied in 265 pediatric patients greater than 1 month to 21 years of age. The adverse event profile observed during pediatric clinical trials was similar to that for adult patients.

Vomiting, diarrhea, and skin rash/allergy were the only drug-related clinical adverse events of moderate to severe intensity observed in greater than or equal to 2% of pediatric patients enrolled in ritonavir clinical trials.

Laboratory Abnormalities in Pediatric Patients

The following Grade 3 to 4 laboratory abnormalities occurred in greater than 3% of pediatric patients who received treatment with ritonavir either alone or in combination with reverse transcriptase inhibitors: neutropenia (9%), hyperamylasemia (7%), thrombocytopenia (5%), anemia (4%), and elevated AST (3%).

6.2 Postmarketing Experience

The following adverse events (not previously mentioned in the labeling) have been reported during post-marketing use of ritonavir. Because these reactions are reported voluntarily from a population of unknown size, it is not possible to reliably estimate their frequency or establish a causal relationship to ritonavir exposure.

Body as a Whole

Dehydration, usually associated with gastrointestinal symptoms, and sometimes resulting in hypotension, syncope, or renal insufficiency has been reported. Syncope, orthostatic hypotension, and renal insufficiency have also been reported without known dehydration.

Co-administration of ritonavir with ergotamine or dihydroergotamine has been associated with acute ergot toxicity characterized by vasospasm and ischemia of the extremities and other tissues including the central nervous system.

Cardiovascular System

First-degree AV block, second-degree AV block, third-degree AV block, right bundle branch block have been reported [*see Warnings and Precautions (5.6)*].

Cardiac and neurologic events have been reported when ritonavir has been co-administered with disopyramide, mexiletine, nefazodone, fluoxetine, and beta blockers. The possibility of drug interaction cannot be excluded.

Endocrine System

Cushing's syndrome and adrenal suppression have been reported when ritonavir has been co-administered with fluticasone propionate or budesonide.

Nervous System

There have been postmarketing reports of seizure. Also, see Cardiovascular System.

Skin and subcutaneous tissue disorders

Toxic epidermal necrolysis (TEN) has been reported.

7 DRUG INTERACTIONS

When co-administering ritonavir with other protease inhibitors (atazanavir, darunavir, fosamprenavir, saquinavir, and tipranavir), see the full prescribing information for that protease inhibitor including important information for drug interactions.

7.1 Potential for Ritonavir to Affect Other Drugs

Ritonavir is an inhibitor of cytochrome P450 3A (CYP3A) and may increase plasma concentrations of agents that are primarily metabolized by CYP3A. Agents that are extensively metabolized by CYP3A and have high first pass metabolism appear to be the most susceptible to large increases in AUC (greater than 3-fold) when co-administered with ritonavir. Thus, co-administration of ritonavir with drugs highly dependent on CYP3A for clearance and for which elevated plasma concentrations are associated with serious and/or life-threatening events is contraindicated. Co-administration with other CYP3A substrates may require a dose adjustment or additional monitoring as shown in Table 4.

Ritonavir also inhibits CYP2D6 to a lesser extent. Co-administration of substrates of CYP2D6 with ritonavir could result in increases (up to 2-fold) in the AUC of the other agent, possibly requiring a proportional dosage reduction. Ritonavir also appears to induce CYP3A, CYP1A2, CYP2C9, CYP2C19, and CYP2B6 as well as other enzymes, including glucuronosyl transferase.

7.2 Established and Other Potentially Significant Drug Interactions

Table 4 provides a list of established or potentially clinically significant drug interactions. Alteration in dose or regimen may be recommended based on drug interaction studies or predicted interaction [see *Contraindications (4)*, *Warnings and Precautions (5.1)*, and *Clinical Pharmacology (12.3)*] for magnitude of interaction.

Table 4. Established and Other Potentially Significant Drug Interactions

Concomitant Drug Class: Drug Name	Effect on Concentration of Ritonavir or Concomitant Drug	Clinical Comment
<i>HIV-Antiviral Agents</i>		
HIV-1 Protease Inhibitor: atazanavir darunavir fosamprenavir	↑ amprenavir ↑ atazanavir ↑ darunavir	See the complete prescribing information for fosamprenavir, atazanavir, darunavir for details on co-administration with ritonavir.
HIV-1 Protease Inhibitor: indinavir	↑ indinavir	Appropriate doses for this combination, with respect to efficacy and safety, have not been established.
HIV-1 Protease Inhibitor: saquinavir	↑ saquinavir	See the complete prescribing information for saquinavir for details on co-administration of saquinavir and ritonavir. Saquinavir/ritonavir in combination with rifampin is not recommended due to the risk of severe hepatotoxicity (presenting as increased hepatic transaminases) if the three drugs are given together.
HIV-1 Protease Inhibitor: tipranavir	↑ tipranavir	See the complete prescribing information for tipranavir for details on co-administration of tipranavir and ritonavir.
Non-Nucleoside Reverse Transcriptase Inhibitor: delavirdine	↑ ritonavir	Appropriate doses of this combination with respect to safety and efficacy have not been established.
HIV-1 CCR5 - antagonist: maraviroc	↑ maraviroc	See the complete prescribing information for maraviroc for details on co-administration of maraviroc and ritonavir-containing protease inhibitors.
Integrase Inhibitor: raltegravir	↓ raltegravir	The effects of ritonavir on raltegravir with ritonavir dosage regimens greater than 100 mg twice daily have not been evaluated, however raltegravir concentrations may be decreased with ritonavir coadministration.
<i>Other Agents</i>		
Alpha 1-Adrenoreceptor Antagonist: alfuzosin	↑ alfuzosin	Contraindicated due to potential hypotension [see <i>Contraindications (4)</i>].
Antianginal: ranolazine	↑ ranolazine	Contraindicated due to potential for serious and/or life-threatening reactions [see <i>Contraindications (4)</i>].
Analgesics, Narcotic: tramadol, propoxyphene,	↑ analgesics	A dose decrease may be needed for these drugs when co-administered with ritonavir.

methadone, fentanyl	↓ methadone ↑ fentanyl	Dosage increase of methadone may be considered. Careful monitoring of therapeutic and adverse effects (including potentially fatal respiratory depression) is recommended when fentanyl is concomitantly administered with ritonavir.
Anesthetic: meperidine	↓ meperidine/ ↑ normeperidine (metabolite)	Dosage increase and long-term use of meperidine with ritonavir are not recommended due to the increased concentrations of the metabolite normeperidine which has both analgesic activity and CNS stimulant activity (e.g., seizures).
Antialcoholics: disulfiram/ metronidazole		Ritonavir formulations contain ethanol, which can produce disulfiram-like reactions when co-administered with disulfiram or other drugs that produce this reaction (e.g., metronidazole).
Antiarrhythmics: amiodarone, dronedarone, flecainide, propafenone, quinidine	↑ antiarrhythmics	Contraindicated due to potential for cardiac arrhythmias [see Contraindications (4)].
Antiarrhythmics: disopyramide, lidocaine, mexiletine	↑ antiarrhythmics	Caution is warranted and therapeutic concentration monitoring is recommended for antiarrhythmics when co-administered with ritonavir, if available.
Anticancer Agents: abemaciclib, dasatinib, ibrutinib, neratinib, nilotinib, venetoclax, vincristine, vinblastine	↑ anticancer agents	For vincristine and vinblastine, consideration should be given to temporarily withholding the ritonavir containing antiretroviral regimen in patients who develop significant hematologic or gastrointestinal side effects when ritonavir is administered concurrently with vincristine or vinblastine. Clinicians should be aware that if the ritonavir containing regimen is withheld for a prolonged period, consideration should be given to altering the regimen to not include a CYP3A or P-gp inhibitor in order to control HIV-1 viral load. A decrease in the dosage or an adjustment of the dosing interval of nilotinib and dasatinib may be necessary for patients requiring co-administration with strong CYP3A inhibitors such as ritonavir. Please refer to the nilotinib and dasatinib prescribing information for dosing instructions. Avoid use of venetoclax or ibrutinib with ritonavir because ritonavir is a strong CYP3A inhibitor and may increase the risk of tumor lysis syndrome. Avoid concomitant use of neratinib with ritonavir. Avoid concomitant use of abemaciclib with strong or moderate CYP3A4 inhibitors (such as ritonavir).

Anticoagulant: warfarin	↑↓ warfarin	Initial frequent monitoring of the INR during ritonavir and warfarin co-administration is recommended.
Anticoagulant: rivaroxaban	↑ rivaroxaban	Avoid concomitant use of rivaroxaban and ritonavir. Co-administration of ritonavir and rivaroxaban may lead to risk of increased bleeding.
Anticonvulsants: carbamazepine, clonazepam, ethosuximide	↑ anticonvulsants	A dose decrease may be needed for these drugs when co-administered with ritonavir and therapeutic concentration monitoring is recommended for these anticonvulsants, if available.
Anticonvulsants: divalproex, lamotrigine, phenytoin	↓ anticonvulsants	A dose increase may be needed for these drugs when co-administered with ritonavir and therapeutic concentration monitoring is recommended for these anticonvulsants, if available.
Antidepressants: nefazodone, selective serotonin reuptake inhibitors (SSRIs): e.g., fluoxetine, paroxetine, tricyclics: e.g., amitriptyline, nortriptyline	↑ antidepressants	A dose decrease may be needed for these drugs when co-administered with ritonavir.
Antidepressant: bupropion	↓ bupropion ↓ active metabolite, hydroxybupropion	Patients receiving ritonavir and bupropion concurrently should be monitored for an adequate clinical response to bupropion.
Antidepressant: desipramine	↑ desipramine	Dosage reduction and concentration monitoring of desipramine is recommended.
Antidepressant: trazodone	↑ trazodone	Adverse events of nausea, dizziness, hypotension and syncope have been observed following co-administration of trazodone and ritonavir. A lower dose of trazodone should be considered.
Antiemetic: dronabinol	↑ dronabinol	A dose decrease of dronabinol may be needed when co-administered with ritonavir.
Antifungals: ketoconazole itraconazole voriconazole	↑ ketoconazole ↑ itraconazole ↓ voriconazole	High doses of ketoconazole or itraconazole (greater than 200 mg per day) are not recommended. Co-administration of voriconazole and ritonavir doses of 400 mg every 12 hours or greater is contraindicated due to the potential for loss of antifungal response [see <i>Contraindications (4)</i>]. Co-administration of voriconazole and ritonavir 100 mg should be avoided, unless an assessment of the benefit/risk to the patient justifies the use of voriconazole.
Anti-gout: colchicine	↑ colchicine	Contraindicated due to potential for serious and/or life-threatening reactions in patients with renal and/or hepatic impairment [see <i>Contraindications (4)</i>]. For patients with normal renal or hepatic function:

		<p><i>Treatment of gout flares-co-administration of colchicine in patients on ritonavir:</i> 0.6 mg (one tablet) for one dose, followed by 0.3 mg (half tablet) one hour later. Dose to be repeated no earlier than three days.</p> <p><i>Prophylaxis of gout flares-co-administration of colchicine in patients on ritonavir:</i> If the original colchicine regimen was 0.6 mg twice a day, the regimen should be adjusted to 0.3 mg once a day.</p> <p>If the original colchicine regimen was 0.6 mg once a day, the regimen should be adjusted to 0.3 mg once every other day.</p> <p><i>Treatment of familial Mediterranean fever (FMF)-co-administration of colchicine in patients on ritonavir:</i> Maximum daily dose of 0.6 mg (may be given as 0.3 mg twice a day).</p>
Anti-infective: clarithromycin	↑ clarithromycin	<p>For patients with renal impairment, adjust clarithromycin dose as follows:</p> <ul style="list-style-type: none"> • For patients with CL_{CR} 30 to 60 mL per min the dose of clarithromycin should be reduced by 50%. • For patients with CL_{CR} less than 30 mL per min the dose of clarithromycin should be decreased by 75%. <p>No dose adjustment for patients with normal renal function is necessary.</p>
Antimycobacterial: bedaquiline	↑ bedaquiline	Bedaquiline should only be used with ritonavir if the benefit of co-administration outweighs the risk.
Antimycobacterial: rifabutin	↑ rifabutin and rifabutin metabolite	Dosage reduction of rifabutin by at least three-quarters of the usual dose of 300 mg per day is recommended (e.g., 150 mg every other day or three times a week). Further dosage reduction may be necessary.
Antimycobacterial: rifampin	↓ ritonavir	May lead to loss of virologic response. Alternate antimycobacterial agents such as rifabutin should be considered.
Antiparasitic: atovaquone	↓ atovaquone	Clinical significance is unknown; however, increase in atovaquone dose may be needed.
Antiparasitic: quinine	↑ quinine	A dose decrease of quinine may be needed when co-administered with ritonavir.
Antipsychotics: lurasidone	↑ lurasidone	Contraindicated due to potential for serious and/or life-threatening reactions [see Contraindications (4)].
pimozide	↑ pimozide	Contraindicated due to potential for serious and/or life-threatening reactions such as cardiac

		arrhythmias [see <i>Contraindications (4)</i>].
Antipsychotics: perphenazine, risperidone, thioridazine	↑ antipsychotics	A dose decrease may be needed for these drugs when co-administered with ritonavir.
Antipsychotics: quetiapine	↑ quetiapine	<p><u>Initiation of ritonavir in patients taking quetiapine:</u></p> <p>Consider alternative antiretroviral therapy to avoid increases in quetiapine exposures. If coadministration is necessary, reduce the quetiapine dose to 1/6 of the current dose and monitor for quetiapine-associated adverse reactions. Refer to the quetiapine prescribing information for recommendations on adverse reaction monitoring.</p> <p><u>Initiation of quetiapine in patients taking ritonavir:</u></p> <p>Refer to the quetiapine prescribing information for initial dosing and titration of quetiapine.</p>
β-Blockers: metoprolol, timolol	↑ beta-blockers	Caution is warranted and clinical monitoring of patients is recommended. A dose decrease may be needed for these drugs when co-administered with ritonavir.
Bronchodilator: theophylline	↓ theophylline	Increased dosage of theophylline may be required; therapeutic monitoring should be considered.
Calcium channel blockers: diltiazem, nifedipine, verapamil	↑ calcium channel blockers	Caution is warranted and clinical monitoring of patients is recommended. A dose decrease may be needed for these drugs when co-administered with ritonavir.
Digoxin	↑ digoxin	Concomitant administration of ritonavir with digoxin may increase digoxin levels. Caution should be exercised when co-administering ritonavir with digoxin, with appropriate monitoring of serum digoxin levels.
Endothelin receptor antagonists: bosentan	↑ bosentan	<p><u>Co-administration of bosentan in patients on ritonavir:</u></p> <p>In patients who have been receiving ritonavir for at least 10 days, start bosentan at 62.5 mg once daily or every other day based upon individual tolerability.</p> <p><u>Co-administration of ritonavir in patients on bosentan:</u></p> <p>Discontinue use of bosentan at least 36 hours prior to initiation of ritonavir.</p> <p>After at least 10 days following the initiation of ritonavir, resume bosentan at 62.5 mg once daily or every other day based upon individual</p>

		tolerability.
Ergot Derivatives: dihydroergotamine, ergotamine, methylergonovine	↑ ergot derivatives	Contraindicated due to potential for acute ergot toxicity characterized by vasospasm and ischemia of the extremities and other tissues including the central nervous system [see <i>Contraindications (4)</i>].
GI Motility Agent: cisapride	↑ cisapride	Contraindicated due to potential for cardiac arrhythmias [see <i>Contraindications (4)</i>].
Hepatitis C direct acting antiviral: glecaprevir/pibrentasvir simeprevir	↑ glecaprevir ↑ pibrentasvir ↑ simeprevir	It is not recommended to co-administer ritonavir with glecaprevir/pibrentasvir, or simeprevir.
Herbal Products: St. John's Wort (hypericum perforatum)	↓ ritonavir	Contraindicated due to potential for loss of virologic response and possible resistance to ritonavir or to the class of protease inhibitors [see <i>Contraindications (4)</i>].
Lipid-modifying agents HMG-CoA Reductase Inhibitor: lovastatin simvastatin atorvastatin rosuvastatin Microsomal triglyceride transfer protein (MTTP) Inhibitor: lomitapide	 ↑ lovastatin ↑ simvastatin ↑ atorvastatin ↑ rosuvastatin ↑ lomitapide	 Contraindicated due to potential for myopathy including rhabdomyolysis [see <i>Contraindications (4)</i>]. Titrate atorvastatin and rosuvastatin dose carefully and use the lowest necessary dose. If ritonavir is used with another protease inhibitor, see the complete prescribing information for the concomitant protease inhibitor for details on co-administration with atorvastatin and rosuvastatin. Lomitapide is a sensitive substrate for CYP3A4 metabolism. CYP3A4 inhibitors increase the exposure of lomitapide, with strong inhibitors increasing exposure approximately 27-fold. Concomitant use of moderate or strong CYP3A4 inhibitors with lomitapide is contraindicated due to potential for hepatotoxicity [see <i>Contraindications (4)</i>].
Immunosuppressants: cyclosporine, tacrolimus, sirolimus (rapamycin)	↑ immunosuppressants	Therapeutic concentration monitoring is recommended for immunosuppressant agents when co-administered with ritonavir.
Long-acting beta- adrenoceptor agonist: salmeterol	↑ salmeterol	Concurrent administration of salmeterol and ritonavir is not recommended. The combination may result in increased risk of cardiovascular adverse events associated with salmeterol, including QT prolongation, palpitations and sinus tachycardia.
Oral Contraceptives or Patch Contraceptives:	↓ ethinyl estradiol	Alternate methods of contraception should be considered.

ethinyl estradiol		
PDE5 Inhibitors: avanafil sildenafil, tadalafil, vardenafil	↑ avanafil ↑ sildenafil ↑ tadalafil ↑ vardenafil	<p>Sildenafil when used for the treatment of pulmonary arterial hypertension (Revatio®) is contraindicated due to the potential for sildenafil-associated adverse events, including visual abnormalities, hypotension, prolonged erection, and syncope [see Contraindications (4)].</p> <p>Do not use ritonavir with avanafil because a safe and effective avanafil dosage regimen has not been established.</p> <p>Particular caution should be used when prescribing sildenafil, tadalafil or vardenafil in patients receiving ritonavir. Coadministration of ritonavir with these drugs may result in an increase in PDE5 inhibitor associated adverse events, including hypotension, syncope, visual changes, and prolonged erection.</p> <p>Use of PDE5 inhibitors for pulmonary arterial hypertension (PAH):</p> <p>Sildenafil (Revatio®) is contraindicated [see Contraindications (4)].</p> <p>The following dose adjustments are recommended for use of tadalafil (Adcirca®) with ritonavir:</p> <p><u>Co-administration of ADCIRCA in patients on ritonavir:</u> In patients receiving ritonavir for at least one week, start ADCIRCA at 20 mg once daily. Increase to 40 mg once daily based upon individual tolerability.</p> <p><u>Co-administration of ritonavir in patients on ADCIRCA:</u> Avoid use of ADCIRCA during the initiation of ritonavir. Stop ADCIRCA at least 24 hours prior to starting ritonavir. After at least one week following the initiation of ritonavir, resume ADCIRCA at 20 mg once daily. Increase to 40 mg once daily based upon individual tolerability.</p> <p>Use of PDE5 inhibitors for the treatment of erectile dysfunction:</p> <p>It is recommended not to exceed the following doses:</p> <ul style="list-style-type: none"> • Sildenafil: 25 mg every 48 hours • Tadalafil: 10 mg every 72 hours

		<ul style="list-style-type: none"> • Vardenafil: 2.5 mg every 72 hours <p>Use with increased monitoring for adverse events.</p>
Sedative/hypnotics: buspirone, clorazepate, diazepam, estazolam, flurazepam, zolpidem	↑ sedative/hypnotics	A dose decrease may be needed for these drugs when co-administered with ritonavir.
Sedative/Hypnotics: triazolam, orally administered midazolam	↑ triazolam ↑ midazolam	Contraindicated due to potential for prolonged or increased sedation or respiratory depression [see <i>Contraindications (4)</i>].
Sedative/hypnotics: Parenteral midazolam	↑ midazolam	Co-administration should be done in a setting which ensures close clinical monitoring and appropriate medical management in case of respiratory depression and/or prolonged sedation. Dosage reduction for midazolam should be considered, especially if more than a single dose of midazolam is administered.
Stimulant: methamphetamine	↑ methamphetamine	Use with caution. A dose decrease of methamphetamine may be needed when co-administered with ritonavir.
Systemic/Inhaled/ Nasal/Ophthalmic Corticosteroids: e.g., betamethasone budesonide ciclesonide dexamethasone fluticasone methylprednisolone mometasone prednisone triamcinolone	↑ glucocorticoids	<p>Coadministration with corticosteroids whose exposures are significantly increased by strong CYP3A inhibitors can increase the risk for Cushing's syndrome and adrenal suppression.</p> <p>Alternative corticosteroids including beclomethasone and prednisolone (whose PK and/or PD are less affected by strong CYP3A inhibitors relative to other studied steroids) should be considered, particularly for long-term use.</p>

8 USE IN SPECIFIC POPULATIONS

When co-administering ritonavir with other protease inhibitors, see the full prescribing information for the co-administered protease inhibitor including important information for use in special populations.

8.1 Pregnancy

Pregnancy Exposure Registry

There is a pregnancy exposure registry that monitors pregnancy outcomes in women exposed to ritonavir during pregnancy. Healthcare providers are encouraged to register patients by calling the Antiretroviral Pregnancy Registry (APR) at 1-800-258-4263.

Risk Summary

Prospective pregnancy data from the Antiretroviral Pregnancy Registry (APR) are not sufficient to adequately assess the risk of birth defects or miscarriage. Available data from the APR show no difference in the rate of overall birth defects for ritonavir compared to the background rate for major birth defects of 2.7% in the U.S. reference population of the Metropolitan Atlanta Congenital Defects Program (MACDP) [see Data].

In animal reproduction studies, no evidence of adverse developmental outcomes was observed with oral administration of ritonavir to pregnant rats and rabbits. During organogenesis in the rat and rabbit, systemic exposure (AUC) was approximately 1/3 lower than human exposure at the recommended daily dose. In the rat pre- and post-natal developmental study, maternal systemic exposure to ritonavir was approximately 1/2 of the exposure in humans at the recommended daily dose, based on a body surface area conversion factor [see Data].

Ritonavir oral solution is not recommended during pregnancy because there is no known safe level of ethanol exposure during pregnancy [see *Clinical Considerations, Dosage and Administration (2.3)* and *Warnings and Precautions (5.2)*].

The background risk of major birth defects and miscarriage for the indicated population is unknown. All pregnancies have a background risk of birth defect, loss, or other adverse outcomes. In the U.S. general population, the estimated background risk of major birth defects and miscarriage in clinically recognized pregnancies is 2 to 4% and 15 to 20%, respectively.

Clinical Considerations

Dose Adjustments During Pregnancy and the Postpartum Period

Ritonavir oral solution contains ethanol and propylene glycol and is not recommended during pregnancy because there is no known safe level of ethanol exposure during pregnancy [see *Dosage and Administration (2.3)* and *Warnings and Precautions (5.2)*].

Data

Human Data

Based on prospective reports to the APR of approximately 6100 live births following exposure to ritonavir-containing regimens (including over 2800 live births exposed in the first trimester and over 3200 live births exposed in the second and third trimesters), there was no difference in the rate of overall birth defects for ritonavir compared with the background birth defect rate of 2.7% in the U.S. reference population of the MACDP. The prevalence of birth defects in live births was 2.3% (95% CI: 1.7% to 2.9%) following first-trimester exposure to ritonavir-containing regimens and 2.9% (95% CI: 2.3% to 3.5%) following second and third trimester exposure to ritonavir-containing regimens.

While placental transfer of ritonavir and fetal ritonavir concentrations are generally low, detectable levels have been observed in cord blood samples and neonate hair.

Animal Data

Ritonavir was administered orally to pregnant rats (at 0, 15, 35, and 75 mg/kg/day) and rabbits (at 0, 25, 50, and 110 mg/kg/day) during organogenesis (on gestation days 6 through 17 and 6 through 19, respectively). No evidence of teratogenicity due to ritonavir was observed in rats and rabbits at doses producing systemic exposures (AUC) equivalent to approximately 1/3 lower than human exposure at the recommended daily dose. Developmental toxicity observed in rats (early resorptions, decreased fetal

body weight and ossification delays and developmental variations) occurred at a maternally toxic dose, at an exposure equivalent to approximately 1/3 lower than human exposure at the recommended daily dose. A slight increase in the incidence of cryptorchidism was also noted in rats (at a maternally toxic dose) at an exposure approximately 1/5 lower than human exposure at the recommended daily dose. Developmental toxicity was observed in rabbits (resorptions, decreased litter size and decreased fetal weights) at maternally toxic doses approximately 1.8 times higher than the recommended daily dose, based on a body surface area conversion factor. In pre- and postnatal development study in rats, ritonavir was administered at doses of 0, 15, 35, and 60 mg/kg/day from gestation day 6 through postnatal day 20. At doses of 60 mg/kg/day, no developmental toxicity was noted with ritonavir dosage equivalent to 1/2 of the recommended daily dose, based on a body surface area conversion factor.

8.2 Lactation

Risk Summary

The Centers for Disease Control and Prevention recommend that HIV-infected mothers not breastfeed their infants to avoid risking postnatal transmission of HIV.

Limited published data reports that ritonavir is present in human milk.

There is no information on the effects of ritonavir on the breastfed infant or the effects of the drug on milk production. Because of the potential for (1) HIV transmission (in HIV-negative infants), (2) developing viral resistance (in HIV-positive infants) and (3) serious adverse reactions in a breastfed infant, instruct mothers not to breastfeed if they are receiving ritonavir.

8.3 Females and Males of Reproductive Potential

Contraception

Use of ritonavir may reduce the efficacy of combined hormonal contraceptives. Advise patients using combined hormonal contraceptives to use an effective alternative contraceptive method or an additional barrier method of contraception [see *Drug Interactions (7.2)*].

8.4 Pediatric Use

In HIV-infected patients age greater than 1 month to 21 years, the antiviral activity and adverse event profile seen during clinical trials and through postmarketing experience were similar to that for adult patients.

8.5 Geriatric Use

Clinical studies of ritonavir did not include sufficient numbers of subjects aged 65 and over to determine whether they respond differently from younger subjects. In general, dose selection for an elderly patient should be cautious, usually starting at the low end of the dosing range, reflecting the greater frequency of decreased hepatic, renal or cardiac function, and of concomitant disease or other drug therapy.

8.6 Hepatic Impairment

No dose adjustment of ritonavir is necessary for patients with either mild (Child-Pugh Class A) or moderate (Child-Pugh Class B) hepatic impairment. No pharmacokinetic or safety data are available regarding the use of ritonavir in subjects with severe hepatic impairment (Child-Pugh Class C), therefore, ritonavir is not recommended for use in patients with severe hepatic impairment [see *Warnings and Precautions (5.3)*, *Clinical Pharmacology (12.3)*].

10 OVERDOSAGE

Acute Overdosage - Human Overdose Experience

Human experience of acute overdose with ritonavir is limited. One patient in clinical trials took ritonavir 1500 mg per day for two days. The patient reported paresthesias which resolved after the dose was decreased. A post-marketing case of renal failure with eosinophilia has been reported with ritonavir overdose.

The approximate lethal dose was found to be greater than 20 times the related human dose in rats and 10 times the related human dose in mice.

Management of Overdosage

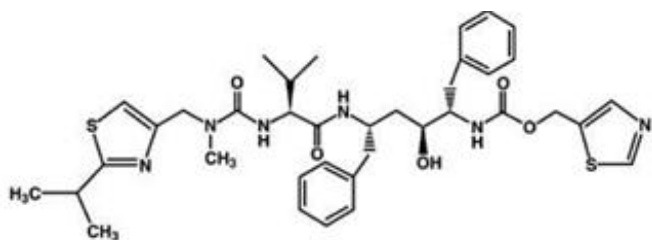
Ritonavir oral solution contains ethanol and propylene glycol. Ingestion of the product over the recommended dose by a young child could result in significant toxicity and could potentially be lethal.

Treatment of overdose with ritonavir consists of general supportive measures including monitoring of vital signs and observation of the clinical status of the patient. There is no specific antidote for overdose with ritonavir. If indicated, elimination of unabsorbed drug should be achieved by gastric lavage; usual precautions should be observed to maintain the airway. Administration of activated charcoal may also be used to aid in removal of unabsorbed drug. Since ritonavir is extensively metabolized by the liver and is highly protein bound, dialysis is unlikely to be beneficial in significant removal of the drug. However, dialysis can remove both ethanol and propylene glycol in the case of overdose with ritonavir oral solution. A Certified Poison Control Center should be consulted for up-to-date information on the management of overdose with ritonavir.

11 DESCRIPTION

Ritonavir is an inhibitor of HIV protease with activity against the Human Immunodeficiency Virus (HIV).

Ritonavir is chemically designated as 10-Hydroxy-2-methyl-5-(1-methylethyl)-1-[2-(1-methylethyl)-4-thiazolyl]-3,6-dioxo-8,11-bis(phenylmethyl)-2,4,7,12-tetraazatridecan-13-oic acid, 5-thiazolylmethyl ester, [5S-(5R*,8R*,10R*,11R*)]. Its molecular formula is $C_{37}H_{48}N_6O_5S_2$, and its molecular weight is 720.95. Ritonavir has the following structural formula:



Ritonavir USP is a white to light-tan, crystalline powder. Ritonavir has a bitter metallic taste. It is freely soluble in methanol and ethanol, soluble in isopropanol and practically insoluble in water.

Ritonavir tablets USP are available for oral administration in a strength of 100 mg ritonavir with the following inactive ingredients: copovidone, corn starch, dibasic calcium phosphate anhydrous, dibasic calcium phosphate dihydrate, hypromellose, mannitol, microcrystalline cellulose, polyethylene glycol,

polysorbate, powdered cellulose, silicified microcrystalline cellulose, sodium stearyl fumarate, sorbitan monolaurate, talc, and titanium dioxide.

USP dissolution test is pending.

12 CLINICAL PHARMACOLOGY

12.1 Mechanism of Action

Ritonavir is an antiretroviral drug [see *Microbiology (12.4)*].

12.2 Pharmacodynamics

Cardiac Electrophysiology

QTcF interval was evaluated in a randomized, placebo and active (moxifloxacin 400 mg once-daily) controlled crossover study in 45 healthy adults, with 10 measurements over 12 hours on Day 3. The maximum mean (95% upper confidence bound) time-matched difference in QTcF from placebo after baseline correction was 5.5 (7.6) milliseconds (msec) for 400 mg twice-daily ritonavir. Ritonavir 400 mg twice daily resulted in Day 3 ritonavir exposure that was approximately 1.5 fold higher than observed with ritonavir 600 mg twice-daily dose at steady state.

PR interval prolongation was also noted in subjects receiving ritonavir in the same study on Day 3. The maximum mean (95% confidence interval) difference from placebo in the PR interval after baseline correction was 22 (25) msec for 400 mg twice-daily ritonavir [see *Warnings and Precautions (5.6)*].

12.3 Pharmacokinetics

The pharmacokinetics of ritonavir have been studied in healthy volunteers and HIV-infected patients (CD₄ greater than or equal to 50 cells per μ L). See Table 5 for ritonavir pharmacokinetic characteristics.

Absorption

The absolute bioavailability of ritonavir has not been determined. After a 600 mg dose of oral solution, peak concentrations of ritonavir were achieved approximately 2 hours and 4 hours after dosing under fasting and non-fasting (514 KCal; 9% fat, 12% protein, and 79% carbohydrate) conditions, respectively.

Ritonavir tablets are not bioequivalent to ritonavir capsules. Under moderate fat conditions (857 kcal; 31% fat, 13% protein, 56% carbohydrates), when a single 100 mg ritonavir dose was administered as a tablet compared with a capsule, AUC_(0-∞) met equivalence criteria but mean C_{max} was increased by 26% (92.8% confidence intervals: \uparrow 15 to \uparrow 39%).

No information is available comparing ritonavir tablets to ritonavir capsules under fasting conditions.

After administration of a single 100 mg dose under fed conditions (617 Kcal, 29% calories from fat), ritonavir oral powder demonstrated comparable bioavailability to the oral solution.

Effect of Food on Oral Absorption

The bioavailability of ritonavir tablet, oral solution, and oral powder is decreased under fed conditions as compared to fasted conditions.

Following the administration of a 100 mg tablet dose of ritonavir, C_{max} and AUC_{inf} of ritonavir were decreased by 21 to 23% under moderate fat (857 Kcal, 30% from fat) or high fat conditions (917 Kcal, 60% calories from fat) relative to fasting conditions.

Following the administration of a 600 mg dose ritonavir oral solution, C_{max} and AUC_{inf} of ritonavir were decreased by 23% and 7%, respectively, under nonfasting conditions (514 Kcal, 10% from fat) relative to fasting conditions. Dilution of the oral solution, within one hour of administration, with 240 mL of chocolate milk, Advera[®] or Ensure[®] did not significantly affect the extent and rate of ritonavir absorption.

Following the administration of a 100 mg dose of ritonavir oral powder, C_{max} and AUC_{inf} of ritonavir were decreased by 23 to 49% under moderate fat (617 Kcal, 29% calories from fat) or high fat conditions (917 Kcal, 60% calories from fat) relative to fasting conditions.

Metabolism

Nearly all of the plasma radioactivity after a single oral 600 mg dose of ¹⁴C-ritonavir oral solution (n = 5) was attributed to unchanged ritonavir. Five ritonavir metabolites have been identified in human urine and feces. The isopropylthiazole oxidation metabolite (M-2) is the major metabolite and has antiviral activity similar to that of parent drug; however, the concentrations of this metabolite in plasma are low. *In vitro* studies utilizing human liver microsomes have demonstrated that cytochrome P450 3A (CYP3A) is the major isoform involved in ritonavir metabolism, although CYP2D6 also contributes to the formation of M-2.

Elimination

In a study of five subjects receiving a 600 mg dose of ¹⁴C-ritonavir oral solution, 11.3 ± 2.8% of the dose was excreted into the urine, with 3.5 ± 1.8% of the dose excreted as unchanged parent drug. In that study, 86.4 ± 2.9% of the dose was excreted in the feces with 33.8 ± 10.8% of the dose excreted as unchanged parent drug. Upon multiple dosing, ritonavir accumulation is less than predicted from a single dose possibly due to a time and dose-related increase in clearance.

Table 5. Ritonavir Pharmacokinetic Characteristics

Parameter	N	Values (Mean ± SD)
V_{β}/F^{\ddagger}	91	0.41 ± 0.25 L/kg
$t_{1/2}$		3 to 5 h
CL/F SS [†]	10	8.8 ± 3.2 L/h
CL/F [‡]	91	4.6 ± 1.6 L/h
CL _R	62	< 0.1 L/h
RBC/Plasma Ratio		0.14
Percent Bound*		98 to 99%

[†] SS = steady state; patients taking ritonavir 600 mg q12h.

[‡] Single ritonavir 600 mg dose.

* Primarily bound to human serum albumin and alpha-1 acid glycoprotein over the ritonavir concentration range of 0.01 to 30 mcg/mL.

Special Populations

Gender, Race and Age

No age-related pharmacokinetic differences have been observed in adult patients (18 to 63 years). Ritonavir pharmacokinetics have not been studied in older patients.

A study of ritonavir pharmacokinetics in healthy males and females showed no statistically significant differences in the pharmacokinetics of ritonavir. Pharmacokinetic differences due to race have not been identified.

Pediatric Patients

Steady-state pharmacokinetics were evaluated in 37 HIV-infected patients ages 2 to 14 years receiving doses ranging from 250 mg per m² twice-daily to 400 mg per m² twice-daily in PACTG Study 310, and in 41 HIV-infected patients ages 1 month to 2 years at doses of 350 and 450 mg per m² twice-daily in PACTG Study 345. Across dose groups, ritonavir steady-state oral clearance (CL/F/m²) was approximately 1.5 to 1.7 times faster in pediatric patients than in adult subjects. Ritonavir concentrations obtained after 350 to 400 mg per m² twice-daily in pediatric patients greater than 2 years were comparable to those obtained in adults receiving 600 mg (approximately 330 mg per m²) twice-daily. The following observations were seen regarding ritonavir concentrations after administration with 350 or 450 mg per m² twice-daily in children less than 2 years of age. Higher ritonavir exposures were not evident with 450 mg per m² twice-daily compared to the 350 mg per m² twice-daily. Ritonavir trough concentrations were somewhat lower than those obtained in adults receiving 600 mg twice-daily. The area under the ritonavir plasma concentration time curve and trough concentrations obtained after administration with 350 or 450 mg per m² twice-daily in children less than 2 years were approximately 16% and 60% lower, respectively, than that obtained in adults receiving 600 mg twice daily.

Renal Impairment

Ritonavir pharmacokinetics have not been studied in patients with renal impairment, however, since renal clearance is negligible, a decrease in total body clearance is not expected in patients with renal impairment.

Hepatic Impairment

Dose-normalized steady-state ritonavir concentrations in subjects with mild hepatic impairment (400 mg twice-daily, n = 6) were similar to those in control subjects dosed with 500 mg twice-daily. Dose-normalized steady-state ritonavir exposures in subjects with moderate hepatic impairment (400 mg twice-daily, n= 6) were about 40% lower than those in subjects with normal hepatic function (500 mg twice-daily, n = 6). Protein binding of ritonavir was not statistically significantly affected by mild or moderately impaired hepatic function. No dose adjustment is recommended in patients with mild or moderate hepatic impairment. However, health care providers should be aware of the potential for lower ritonavir concentrations in patients with moderate hepatic impairment and should monitor patient response carefully. Ritonavir has not been studied in patients with severe hepatic impairment.

Pregnancy

Based on evaluation of the published literature, ritonavir exposures are reduced during pregnancy relative to postpartum.

Drug Interactions

[see also Contraindications (4), Warnings and Precautions (5.1), and Drug Interactions (7)]

Table 6 and Table 7 summarize the effects on AUC and C_{max}, with 95% confidence intervals (95% CI), of co-administration of ritonavir with a variety of drugs. For information about clinical recommendations see Table 4 in *Drug Interactions (7)*.

Co-administered Drug	Dose of Co-administered Drug (mg)	Dose of Ritonavir (mg)	N	AUC % (95% CI)	C _{max} (95% CI)	C _{min} (95% CI)
Clarithromycin	500 q12h, 4 d	200 q8h, 4 d	22	↑ 12% (2, 23%)	↑ 15% (2, 28%)	↑ 14% (-3, 36%)
Didanosine	200 q12h, 4 d	600 q12h, 4 d	12	↔	↔	↔
Fluconazole	400 single dose, day 1; 200 daily, 4 d	200 q6h, 4 d	8	↑ 12% (5, 20%)	↑ 15% (7, 22%)	↑ 14% (0, 26%)
Fluoxetine	30 q12h, 8 d	600 single dose, 1 d	16	↑ 19% (7, 34%)	↔	ND
Ketoconazole	200 daily, 7 d	500 q12h, 10 d	12	↑ 18% (-3, 52%)	↑ 10% (-11, 36%)	ND
Rifampin	600 or 300 daily, 10 d	500 q12h, 20 d	7, 9*	↓ 35% (7, 55%)	↓ 25% (-5, 46%)	↓ 49% (-14, 91%)
Voriconazole	400 q12h, 1 d; then 200 q12h, 8 d	400 q12h, 9 d		↔	↔	ND
Zidovudine	200 q8h, 4 d	300 q6h, 4 d	10	↔	↔	↔

ND=not determined

Co-administered Drug	Dose of Co-administered Drug (mg)	Dose of Ritonavir (mg)	N	AUC % (95% CI)	C _{max} (95% CI)	C _{min} (95% CI)
Alprazolam	1, single dose	500 q12h, 10 d	12	↓ 12% (-5, 30%)	↓ 16% (5, 27%)	ND
Avanafil	50, single dose	600 q12h	14 ⁶	↑ 13-fold	↑ 2.4-fold	ND
Clarithromycin	500 q12h, 4 d	200 q8h, 4 d	22	↑ 77% (56, 103%)	↑ 31% (15, 51%)	↑ 2.8-fold (2.4, 3.3X)
14-OH clarithromycin metabolite				↓ 100%	↓ 99%	↓ 100%
Desipramine	100, single dose	500 q12h, 12 d	14	↑ 145% (103, 211%)	↑ 22% (12, 35%)	ND
2-OH desipramine metabolite				↓ 15% (3, 26%)	↓ 67% (62, 72%)	ND
Didanosine	200 q12h, 4 d	600 q12h, 4 d	12	↓ 13% (0, 23%)	↓ 16% (5, 26%)	↔
Ethinyl estradiol	50 mcg single dose	500 q12h, 16 d	23	↓ 40% (31, 49%)	↓ 32% (24, 39%)	ND
Fluticasone propionate aqueous nasal spray	200 mcg qd, 7 d	100 mg q12h, 7 d	18	↑ approximately 350-fold ⁵	↑ approximately 25-fold ⁵	
Indinavir ¹ Day 14	400 q12h, 15 d	400 q12h, 15 d	10	↑ 6% (-14, 29%)	↓ 51% (40, 61%)	↑ 4-fold (2.8, 6.8X)

Day 15				↓ 7% (-22, 28%)	↓ 62% (52, 70%)	↑ 4-fold (2.5, 6.5X)
Ketoconazole	200 daily, 7 d	500 q12h, 10 d	12	↑ 3.4-fold (2.8, 4.3X)	↑ 55% (40, 72%)	ND
Meperidine	50 oral single dose	500 q12h, 10 d	8	↓ 62% (59, 65%)	↓ 59% (42, 72%)	ND
Normeperidine metabolite			6	↑ 47% (-24, 345%)	↑ 87% (42, 147%)	ND
Methadone ²	5, single dose	500 q12h, 15 d	11	↓ 36% (16, 52%)	↓ 38% (28, 46%)	ND
Raltegravir	400, single dose	100 q12h, 16 d	10	↓ 16% (-30, 1%)	↓ 24% (-45, 4%)	↓ 1% (-30, 40%)
Rivaroxaban	10, single dose (days 0 and 7)	600 q12h (days 2 to 7)	12	↑ 150% (130 to 170%) ⁷	↑ 60% (40 to 70%) ⁷	ND
Rifabutin 25-O-desacetyl rifabutin metabolite	150 daily, 16 d	500 q12h, 10 d	5, 11*	↑ 4-fold (2.8, 6.1X) ↑ 38-fold (28, 56X)	↑ 2.5-fold (1.9, 3.4X) ↑ 16-fold (13, 20X)	↑ 6-fold (3.5, 18.3X) ↑ 181-fold (ND)
Sildenafil	100, single dose	500 twice daily, 8 d	28	↑ 11-fold	↑ 4-fold	ND
Simeprevir	200 mg qd, 7 d	100 mg bid, 15 d	12	↑ 618% (463% to 815%) ⁸	↑ 370% (284% to 476%) ⁸	↑ 1335% (929% to 1901%) ⁸
Sulfamethoxazole ³	800, single dose	500 q12h, 12 d	15	↓ 20% (16, 23%)	↔	ND
Tadalafil	20 mg, single dose	200 mg q12h		↑ 124%	↔	ND
Theophylline	3 mg/kg q8h, 15 d	500 q12h, 10 d	13, 11*	↓ 43% (42, 45%)	↓ 32% (29, 34%)	↓ 57% (55, 59%)
Trazodone	50 mg, single dose	200 mg q12h, 4 doses	10	↑ 2.4-fold	↑ 34%	
Trimethoprim ³	160, single dose	500 q12h, 12 d	15	↑ 20% (3, 43%)	↔	ND
Vardenafil	5 mg	600 q12h		↑ 49-fold	↑ 13-fold	ND
Voriconazole	400 q12h, 1 d; then 200 q12h, 8 d	400 q12h, 9 d		↓ 82%	↓ 66%	
	400 q12h, 1 d; then 200 q12h, 8 d	100 q12h, 9 d		↓ 39%	↓ 24%	
Warfarin S-Warfarin	5, single dose	400 q12h, 12 d	12	↑ 9% (-17, 44%) ⁴	↓ 9% (-16, -2%) ⁴	ND
R-Warfarin				↓ 33% (-38, -27%) ⁴	↔	ND
Zidovudine	200 q8h, 4 d	300 q6h, 4 d	9	↓ 25% (15, 34%)	↓ 27% (4, 45%)	ND

ND=not determined

1 Ritonavir and indinavir were co-administered for 15 days; Day 14 doses were administered after a 15%-fat breakfast (757 Kcal) and 9%-fat evening snack (236 Kcal), and Day 15 doses were administered

- after a 15%-fat breakfast (757 Kcal) and 32%-fat dinner (815 Kcal). Indinavir C_{min} was also increased 4-fold. Effects were assessed relative to an indinavir 800 mg q8h regimen under fasting conditions.
- 2 Effects were assessed on a dose-normalized comparison to a methadone 20 mg single dose.
 - 3 Sulfamethoxazole and trimethoprim taken as single combination tablet.
 - 4 90% CI presented for R- and S-warfarin AUC and C_{max} ratios.
 - 5 This significant increase in plasma fluticasone propionate exposure resulted in a significant decrease (86%) in plasma cortisol AUC.
 - 6 For the reference arm: N=14 for C_{max} and $AUC_{(0-inf)}$, and for the test arm: N=13 for C_{max} and N=4 for $AUC_{(0-inf)}$.
 - 7 90% CI presented for rivaroxaban
 - 8 90% CI presented for simeprevir (change in exposure presented as percentage increase)
- ↑ Indicates increase, ↓ indicates decrease, ↔ indicates no change.
* Parallel group design; entries are subjects receiving combination and control regimens, respectively.

12.4 Microbiology

Mechanism of Action

Ritonavir is a peptidomimetic inhibitor of the HIV-1 protease. Inhibition of HIV protease renders the enzyme incapable of processing the Gag-Pol polyprotein precursor which leads to production of non-infectious immature HIV particles.

Antiviral Activity in Cell Culture

The activity of ritonavir was assessed in acutely infected lymphoblastoid cell lines and in peripheral blood lymphocytes. The concentration of drug that inhibits 50% (EC_{50}) value of viral replication ranged from 3.8 to 153 nM depending upon the HIV-1 isolate and the cells employed. The average EC_{50} value for low passage clinical isolates was 22 nM (n = 13). In MT₄ cells, ritonavir demonstrated additive effects against HIV-1 in combination with either didanosine (ddI) or zidovudine (ZDV). Studies which measured cytotoxicity of ritonavir on several cell lines showed that greater than 20 microM was required to inhibit cellular growth by 50% resulting in a cell culture therapeutic index of at least 1000.

Resistance

HIV-1 isolates with reduced susceptibility to ritonavir have been selected in cell culture. Genotypic analysis of these isolates showed mutations in the HIV-1 protease gene leading to amino acid substitutions I84V, V82F, A71V, and M46I. Phenotypic (n = 18) and genotypic (n = 48) changes in HIV-1 isolates from selected patients treated with ritonavir were monitored in phase I/II trials over a period of 3 to 32 weeks. Substitutions associated with the HIV-1 viral protease in isolates obtained from 43 patients appeared to occur in a stepwise and ordered fashion at positions V82A/F/T/S, I54V, A71V/T, and I36L, followed by combinations of substitutions at an additional 5 specific amino acid positions (M46I/L, K20R, I84V, L33F and L90M). Of 18 patients for whom both phenotypic and genotypic analysis were performed on free virus isolated from plasma, 12 showed reduced susceptibility to ritonavir in cell culture. All 18 patients possessed one or more substitutions in the viral protease gene. The V82A/F substitution appeared to be necessary but not sufficient to confer phenotypic resistance. Phenotypic resistance was defined as a greater than or equal to 5-fold decrease in viral sensitivity in cell culture from baseline.

Cross-Resistance to Other Antiretrovirals

Among protease inhibitors variable cross-resistance has been recognized. Serial HIV-1 isolates

obtained from six patients during ritonavir therapy showed a decrease in ritonavir susceptibility in cell culture but did not demonstrate a concordant decrease in susceptibility to saquinavir in cell culture when compared to matched baseline isolates. However, isolates from two of these patients demonstrated decreased susceptibility to indinavir in cell culture (8-fold). Isolates from 5 patients were also tested for cross-resistance to amprenavir and nelfinavir; isolates from 3 patients had a decrease in susceptibility to nelfinavir (6- to 14-fold), and none to amprenavir. Cross-resistance between ritonavir and reverse transcriptase inhibitors is unlikely because of the different enzyme targets involved. One zidovudine-resistant HIV-1 isolate tested in cell culture retained full susceptibility to ritonavir.

13 NONCLINICAL TOXICOLOGY

13.1 Carcinogenesis, Mutagenesis, Impairment of Fertility

Carcinogenesis

Carcinogenicity studies in mice and rats have been carried out on ritonavir. In male mice, at levels of 50, 100 or 200 mg per kg per day, there was a dose dependent increase in the incidence of both adenomas and combined adenomas and carcinomas in the liver. Based on AUC measurements, the exposure at the high dose was approximately 0.3-fold for males that of the exposure in humans with the recommended therapeutic dose (600 mg twice-daily). There were no carcinogenic effects seen in females at the dosages tested. The exposure at the high dose was approximately 0.6-fold for the females that of the exposure in humans. In rats dosed at levels of 7, 15 or 30 mg per kg per day there were no carcinogenic effects. In this study, the exposure at the high dose was approximately 6% that of the exposure in humans with the recommended therapeutic dose. Based on the exposures achieved in the animal studies, the significance of the observed effects is not known.

Mutagenesis

However, ritonavir was found to be negative for mutagenic or clastogenic activity in a battery of *in vitro* and *in vivo* assays including the Ames bacterial reverse mutation assay using *S. typhimurium* and *E. coli*, the mouse lymphoma assay, the mouse micronucleus test and chromosomal aberration assays in human lymphocytes.

Impairment of Fertility

Ritonavir produced no effects on fertility in rats at drug exposures approximately 40% (male) and 60% (female) of that achieved with the proposed therapeutic dose. Higher dosages were not feasible due to hepatic toxicity.

14 CLINICAL STUDIES

The activity of ritonavir as monotherapy or in combination with nucleoside reverse transcriptase inhibitors has been evaluated in 1446 patients enrolled in two double-blind, randomized trials.

14.1 Advanced Patients with Prior Antiretroviral Therapy

Study 247 was a randomized, double-blind trial (with open-label follow-up) conducted in HIV-infected patients with at least nine months of prior antiretroviral therapy and baseline CD₄ cell counts less than or equal to 100 cells per μL . Ritonavir 600 mg twice-daily or placebo was added to each patient's baseline antiretroviral therapy regimen, which could have consisted of up to two approved antiretroviral agents. The study accrued 1,090 patients, with mean baseline CD₄ cell count at study entry of 32 cells per μL . After the clinical benefit of ritonavir therapy was demonstrated, all patients were eligible to switch to open-label ritonavir for the duration of the follow-up period. Median duration of double-blind therapy with ritonavir and placebo was 6 months. The median duration of follow-up through the end of the

open-label phase was 13.5 months for patients randomized to ritonavir and 14 months for patients randomized to placebo.

The cumulative incidence of clinical disease progression or death during the double-blind phase of Study 247 was 26% for patients initially randomized to ritonavir compared to 42% for patients initially randomized to placebo. This difference in rates was statistically significant.

Cumulative mortality through the end of the open-label follow-up phase for patients enrolled in Study 247 was 18% (99/543) for patients initially randomized to ritonavir compared to 26% (142/547) for patients initially randomized to placebo. This difference in rates was statistically significant. However, since the analysis at the end of the open-label phase includes patients in the placebo arm who were switched from placebo to ritonavir therapy, the survival benefit of ritonavir cannot be precisely estimated.

During the double-blind phase of Study 247, CD₄ cell counts increases from baseline for patients randomized to ritonavir at Week 2 and Week 4 were observed. From Week 4 and through Week 24, mean CD₄ cell counts for patients randomized to ritonavir appeared to plateau. In contrast, there was no apparent change in mean CD₄ cell counts for patients randomized to placebo at any visit between baseline and Week 24 of the double-blind phase of Study 247.

14.2 Patients without Prior Antiretroviral Therapy

In Study 245, 356 antiretroviral-naive HIV-infected patients (mean baseline CD₄ = 364 cells per μ L) were randomized to receive either ritonavir 600 mg twice-daily, zidovudine 200 mg three-times-daily, or a combination of these drugs.

During the double-blind phase of study 245, greater mean CD₄ cell count increases were observed from baseline to Week 12 in the ritonavir-containing arms compared to the zidovudine arms. Mean CD₄ cell count changes subsequently appeared to plateau through Week 24 in the ritonavir arm, whereas mean CD₄ cell counts gradually diminished through Week 24 in the zidovudine and ritonavir plus zidovudine arms.

Greater mean reductions in plasma HIV-1 RNA levels were observed from baseline to Week 2 for the ritonavir-containing arms compared to the zidovudine arm. After Week 2 and through Week 24, mean plasma HIV-1 RNA levels either remained stable in the ritonavir and zidovudine arms or gradually rebounded toward baseline in the ritonavir plus zidovudine arm.

15 REFERENCES

1. Sewester CS. Calculations. In: Drug Facts and Comparisons. St. Louis, MO: J.B. Lippincott Co; January, 1997:xix.

16 HOW SUPPLIED/STORAGE AND HANDLING

Ritonavir Tablets USP, 100 mg are white to off-white, film-coated, ovaloid tablets, debossed with 'Z' on one side and '24' on other side.

Bottles of 30	NDC 65862-687-30
Bottles of 100	NDC 65862-687-01
Bottles of 500	NDC 65862-687-05
Bottles of 1,000	NDC 65862-687-99

Recommended Storage

Store at or below 30°C (86°F). Exposure to temperatures up to 50°C (122°F) for seven days permitted. Dispense in original container or USP equivalent tight container (75 mL, 200 mL, 1300 mL and 2000 mL). For patient use: exposure of this product to high humidity outside the original or USP equivalent tight container (75 mL, 200 mL, 1300 mL and 2000 mL) for longer than 2 weeks is not recommended.

17 PATIENT COUNSELING INFORMATION

Advise the patient to read the FDA-approved patient labeling (Patient Information)

General Administration Information [see Dosage and Administration (2)]:

- Advise patients and caregivers to pay special attention to accurate preparation and administration of their dose to minimize the risk of accidental overdose or underdose of ritonavir.
- Advise caregivers to inform their healthcare provider if their child's weight changes in order to make sure that the child's ritonavir dose is adjusted as needed.
- Advise patients to take ritonavir with meals.
- For adult patients taking ritonavir tablets, the maximum dose of 600 mg twice daily by mouth with meals should not be exceeded.
- Advise patients to remain under the care of a physician while using ritonavir and to take ritonavir and other concomitant antiretroviral therapy every day as prescribed. Ritonavir must always be used in combination with other antiretroviral drugs. Advise patients not to alter the dose or discontinue therapy without consulting with their healthcare provider. If a dose of ritonavir is missed patients should take the dose as soon as possible and then return to their normal schedule. However, if a dose is skipped the patient should not double the next dose.
- Continued ritonavir therapy at a dose of 600 mg twice daily following loss of viral suppression may increase the likelihood of cross-resistance to other protease inhibitors.
- Ritonavir is not a cure for HIV-1 infection and patients may continue to experience illnesses associated with HIV-1 infection, including opportunistic infections. Patients should remain under the care of a physician when using ritonavir.

Drug Interactions

- Ritonavir may interact with some drugs; therefore, patients should be advised to report to their doctor the use of any other prescription, non-prescription medication or herbal products, particularly St. John's Wort.
- Instruct patients receiving combined hormonal contraception to use an effective alternative contraceptive method or an additional barrier method during therapy with ritonavir because hormonal levels may decrease [see Drug Interactions (7.2), Use in Specific Populations (8.3)].

Hepatotoxicity

Pre-existing liver disease including Hepatitis B or C can worsen with use of ritonavir. This can be seen as worsening of transaminase elevations or hepatic decompensation. Advise patients that their liver function tests will need to be monitored closely especially during the first several months of ritonavir treatment and that they should notify their healthcare provider if they develop the signs and symptoms of worsening liver disease including loss of appetite, abdominal pain, jaundice, and itchy skin [see Warnings and Precautions (5.3)].

Pancreatitis

Pancreatitis, including some fatalities, has been observed in patients receiving ritonavir therapy. Advise patients to notify their healthcare provider of signs and symptoms (nausea, vomiting, and abdominal pain) that might be suggestive of pancreatitis [see *Warnings and Precautions (5.4)*].

Allergic Reactions/Hypersensitivity

Skin rashes ranging in severity from mild to Stevens-Johnson syndrome have been reported in patients receiving ritonavir. Advise patients to contact their healthcare provider if they develop a rash while taking ritonavir [see *Warnings and Precautions (5.5)*].

PR Interval Prolongation

Ritonavir may produce changes in the electrocardiogram (e.g., PR prolongation). Advise patients to consult their healthcare provider if they experience symptoms such as dizziness, lightheadedness, abnormal heart rhythm or loss of consciousness [see *Warnings and Precautions (5.6)*].

Lipid Disorders

Advise patients that treatment with ritonavir therapy can result in substantial increases in the concentration of total cholesterol and triglycerides [see *Warnings and Precautions (5.7)*].

Diabetes Mellitus/Hyperglycemia

Advise patients that new onset of diabetes or exacerbation of pre-existing diabetes mellitus, and hyperglycemia have been reported and to notify their healthcare provider if they develop the signs and symptoms of diabetes mellitus including frequent urination, excessive thirst, extreme hunger or unusual weight loss and/or an increased blood sugar while on ritonavir as they may require a change in their diabetes treatment or new treatment [see *Warnings and Precautions (5.8)*].

Immune Reconstitution Syndrome

Advise patients that immune reconstitution syndrome has been reported in HIV-infected patients treated with combination antiretroviral therapy, including ritonavir [see *Warnings and Precautions (5.9)*].

Fat Redistribution

Advise patients that redistribution or accumulation of body fat may occur in patients receiving antiretroviral therapy and that the cause and long term health effects of these conditions are not known at this time [see *Warnings and Precautions (5.10)*].

Patients with Hemophilia

Advise patients with hemophilia that they may experience increased bleeding when treated with protease inhibitors such as ritonavir [see *Warnings and Precautions (5.11)*].

Ritonavir Oral Solution Not Recommended During Pregnancy

Advise pregnant women that use of ritonavir oral solution during pregnancy is not recommended due to its ethanol content [see *Dosage and Administration (2.3)* and *Use in Specific Population (8.1)*].

Pregnancy Exposure Registry

Inform patients that there is an antiretroviral pregnancy registry that monitors fetal outcomes of pregnant women exposed to ritonavir [see *Use in Specific Populations (8.1)*].

Lactation

Instruct women with HIV-1 infection not to breastfeed because HIV-1 can be passed to the baby in breast milk [see *Use in Specific Populations (8.2)*].

Dispense with Patient Information available at: www.aurobindousa.com/product-medication-guides

Patient Information

Ritonavir Tablets USP

(ri toe' na vir)

What is the most important information I should know about ritonavir tablets?

- Ritonavir tablets can interact with other medicines and cause serious side effects. It is important to know the medicines that should not be taken with ritonavir tablets. See the section “Who should not take ritonavir tablets?”

What are ritonavir tablets?

- Ritonavir tablets are prescription medicines that are used with other antiviral medicines to treat people with human immunodeficiency virus (HIV-1) infection.

HIV-1 is the virus that causes AIDS (Acquired Immune Deficiency Syndrome).

Do not take ritonavir tablets if you or your child:

- are allergic to ritonavir or any of the ingredients in ritonavir tablets. See the end of this leaflet for a complete list of ingredients in ritonavir tablets.
- If you take any of the following medicines:
 - alfuzosin
 - ranolazine
 - dronedarone
 - colchicine, if you have kidney or liver problems.
 - lurasidone
 - pimozide
 - amiodarone
 - ergot-containing medicines including:
 - dihydroergotamine mesylate

- ergotamine tartrate
- methylergonovine maleate
- cisapride
- flecainide
- lovastatin
- simvastatin
- lomitapide
- sildenafil (REVATIO®) only when used for treating the lung problem, pulmonary arterial hypertension (PAH)
- triazolam
- midazolam when taken by mouth
- propafenone
- quinidine
- St. John's Wort (*Hypericum perforatum*) or a product that contains St. John's wort
- voriconazole if your ritonavir tablets dose is 400 mg every 12 hours or greater

Serious problems can happen if you or your child takes any of these medicines with ritonavir tablets.

Before taking ritonavir tablets, tell your healthcare provider about all of your medical conditions, including if you or your child:

- have liver problems, including Hepatitis B or Hepatitis C
- have heart problems
- have high blood sugar (diabetes)
- have bleeding problems or hemophilia
- are pregnant or plan to become pregnant.
 - Ritonavir oral solution contains alcohol. You should not take ritonavir oral solution during pregnancy because there is no known safe level of alcohol exposure during pregnancy. Tell your healthcare provider if you become pregnant during treatment with ritonavir tablets.
 - Ritonavir tablets may reduce how well hormonal birth control works. Females who may become pregnant should use another effective form of birth control or an additional barrier method of birth control during treatment with ritonavir tablets.
 - **Pregnancy Registry:** There is a pregnancy registry for women who take antiviral medicines during pregnancy. The purpose of the registry is to collect information about the health of you and your baby. Talk to your healthcare provider about how you can take part in this registry.
- are breastfeeding or plan to breastfeed. **Do not breastfeed if you take ritonavir tablets.**
 - You should not breastfeed if you have HIV-1 because of the risk of passing HIV-1 to your baby.
 - Ritonavir may pass into your breastmilk.
 - Talk to your healthcare provider about the best way to feed your baby.

Tell your healthcare provider about all the medicines you take including prescription and over-the-counter medicines, vitamins, and herbal supplements. Some medicines interact with ritonavir tablets.

Keep a list of your medicines to show our healthcare provider and pharmacist.

- You can ask your healthcare provider or pharmacist for a list of medicines that interact with ritonavir tablets.
- Do not start taking a new medicine without telling your healthcare provider. Your healthcare provider can tell you if it is safe to take ritonavir tablets with other medicines.

How should I take ritonavir tablets?

- Take ritonavir tablets exactly as your healthcare provider tells you to take it.
- You should stay under a healthcare provider's care during treatment with ritonavir tablets. Do not change your dose of ritonavir tablets or stop your treatment without talking with your healthcare provider first.
- If your child is taking ritonavir tablets, your child's healthcare provider will decide the right dose based on your child's height and weight. Tell your healthcare provider if your child's weight changes. If your child does not tolerate ritonavir oral solution or ritonavir oral powder, ask your child's healthcare provider for advice.
- Swallow ritonavir tablets whole. Do not chew, break, or crush tablets before swallowing. If you cannot swallow ritonavir tablets whole, tell your healthcare provider. You may need a different medicine.
- Take ritonavir tablets with meals.
- Do not run out of ritonavir tablets. Get your ritonavir tablets prescription refilled from your healthcare provider or pharmacy before you run out.
- If you miss a dose of ritonavir tablets, take it as soon as possible and then take your next scheduled dose at its regular time. If it is almost time for your next dose, wait and take the next dose at the regular time. Do not double the next dose.
- If you take too much ritonavir tablets, call your local poison control center or go to the nearest hospital emergency room right away.

What are the possible side effects of ritonavir tablets?

Ritonavir tablets can cause serious side effects including:

- See “**What is the most important information I should know about ritonavir tablets?**”
- **Liver problems.** Some people taking ritonavir tablets in combination with other antiviral medicines have developed liver problems which may be life-threatening. Your healthcare provider should do regular blood tests during your combination treatment with ritonavir tablets. If you have chronic hepatitis B or C infection, your healthcare provider should check your blood tests more often because you have an increased chance of developing liver problems. Tell your healthcare provider right away if you get any of the following signs and symptoms of liver problems:
 - loss of appetite
 - yellowing of your skin or whites of your eyes
 - pain or tenderness on your right side below your ribs
 - itchy skin
- **Inflammation of your pancreas (pancreatitis).** Ritonavir tablets can cause serious pancreas problems, which may lead to death. Tell your healthcare provider right away if you have signs or symptoms of pancreatitis such as:
 - nausea
 - vomiting
 - stomach (abdomen) pain
- **Allergic reactions.** Sometimes these allergic reactions can become severe and require treatment in a hospital. Call your healthcare provider right away if you develop a rash. Stop taking ritonavir tablets and get medical help right away if you have any of the following symptoms of a severe allergic reaction:
 - trouble breathing
 - sweating
 - wheezing

- swelling of your face, lips or tongue
- dizziness or fainting
- muscle or joint pain
- throat tightness or hoarseness
- blisters or skin lesions
- fast heartbeat or pounding in your chest (tachycardia)
- mouth sores or ulcers

Changes in the electrical activity of your heart called PR prolongation. PR prolongation can cause irregular heartbeats. Tell your healthcare provider right away if you have symptoms such as:

- dizziness
- feel faint or pass out
- lightheadedness
- abnormal heart beat
- **Increase in cholesterol and triglyceride levels.** Treatment with ritonavir tablets may increase your blood levels of cholesterol and triglycerides. Your healthcare provider should do blood tests before you start your treatment with ritonavir tablets and regularly to check for an increase in your cholesterol and triglycerides levels.
- **Diabetes and high blood sugar (hyperglycemia).** Some people who take protease inhibitors including ritonavir tablets can get high blood sugar, develop diabetes, or your diabetes can get worse. Tell your healthcare provider if you notice an increase in thirst or urinate often during treatment with ritonavir tablets.
- **Changes in your immune system (Immune Reconstitution Syndrome)** can happen when you start taking HIV-1 medicines. Your immune system may get stronger and begin to fight infections that have been hidden in your body for a long time. Call your healthcare provider right away if you start having new symptoms after starting your HIV-1 medicine.
- **Change in body fat** can happen in some people who taking HIV-1 medicines. These changes may include an increased amount of fat in the upper back and neck (“buffalo hump”), breast, and around the middle part of your body (trunk). Loss of fat from the legs, arms, and face may also happen. The exact cause and long-term health effects of these conditions are not known.
- **Increased bleeding for hemophiliacs.** Some people with hemophilia have increased bleeding with protease inhibitors including ritonavir tablets.

The most common side effects of ritonavir tablets include:

- diarrhea
- tingling feeling or numbness in hands or feet or around the lips
- nausea
- vomiting
- rash
- upper and lower stomach (abdominal) pain
- feeling weak or tired

Ritonavir oral solution contains a large amount of alcohol. If a toddler or young child accidentally drinks more than the recommended dose of ritonavir oral solution, it could make him/her sick from too much alcohol. Go to the nearest emergency room right away if this happens.

These are not all of the possible side effects of ritonavir tablets. Call your doctor for medical advice

about side effects. You may report side effects to FDA at 1-800-FDA-1088.

How should I store ritonavir tablets?

- Store ritonavir tablets in the original container given to you by the pharmacist.
- Use ritonavir tablets by the expiration date.
- Store at or below 30°C (86°F). Exposure to temperatures up to 50°C (122°F) for seven days permitted.
- Exposure to high humidity outside the original container for longer than 2 weeks is not recommended.

Keep ritonavir tablets and all medicines out of the reach of children.

General information about the safe and effective use of ritonavir tablets

Medicines are sometimes prescribed for purposes other than those listed in a Patient Information Leaflet. Do not use ritonavir tablets for a condition for which it was not prescribed. Do not give ritonavir tablets to other people, even if they have the same symptoms that you have. It may harm them. You can ask your pharmacist or healthcare provider for information about ritonavir tablets that is written for healthcare professionals.

What are the ingredients in ritonavir tablets?

Active ingredient: ritonavir

Inactive ingredients: copovidone, corn starch, dibasic calcium phosphate anhydrous, dibasic calcium phosphate dihydrate, hypromellose, mannitol, microcrystalline cellulose, polyethylene glycol, polysorbate, powdered cellulose, silicified microcrystalline cellulose, sodium stearyl fumarate, sorbitan monolaurate, talc, and titanium dioxide.

For more information, call Aurobindo Pharma USA, Inc. at 1-866-850-2876.

The brands listed are trademarks of their respective owners and are not trademarks of Aurobindo Pharma Limited. The makers of these brands are not affiliated with and do not endorse Aurobindo Pharma Limited or its products.

This Patient Information has been approved by the U.S. Food and Drug Administration.

Dispense with Patient Information available at: www.aurobindousa.com/product-medication-guides

Distributed by:

Aurobindo Pharma USA, Inc.
279 Princeton-Hightstown Road
East Windsor, NJ 08520

Manufactured by:

Aurobindo Pharma Limited
Hyderabad-500 038, India

Revised: 09/2019

PACKAGE LABEL PRINCIPAL DISPLAY PANEL - 100 mg (30 Tablets Bottle)

NDC 65862-687-30

Ritonavir Tablets USP
100 mg

Attention Pharmacists and Patients: Tablet formulation. Store at room temperature (see side panel). Take ritonavir tablets with meals.

ALERT: Find out about medicines that should NOT be taken with ritonavir tablets.

Note to Pharmacist: Do not cover ALERT box with pharmacy label. Dispense the patient information leaflet provided separately to each patient.

Rx only 30 Tablets
AUROBINDO

NDC 65862-687-30

Ritonavir Tablets USP
100 mg

Attention Pharmacists and Patients: Tablet formulation. Store at room temperature (see side panel). Take ritonavir tablets with meals.

ALERT: Find out about medicines that should NOT be taken with ritonavir tablets.

Note to Pharmacist: Do not cover ALERT box with pharmacy label. Dispense the patient information leaflet provided separately to each patient.

Rx only 30 Tablets

AUROBINDO

Each film-coated tablet contains:
Ritonavir USP 100 mg.

Take ritonavir tablets with meals. Tablets should be swallowed whole and not chewed, broken, or crushed.

Usual Dosage: See package insert for full prescribing information.

Store at or below 30°C (86°F). Exposure to temperatures up to 50°C (122°F) for seven days permitted. For patient use: exposure of this product to high humidity outside the original or USP equivalent tight container (75 mL) for longer than 2 weeks is not recommended.

Dispense in original container or USP equivalent tight container (75 mL).

Do not accept if seal over bottle opening is broken or missing.

Distributed by:
Aurobindo Pharma USA, Inc.
279 Princeton-Hightstown Road
East Windsor, NJ 08520

Made in India

Code: TS/DRUGS/22/2009

N 3 6 5 8 6 2 6 8 7 3 0 2

P1420566

* Over Printing Zone

Coding Area
(45 x 15 mm)
Dotted lines not to be printed

RITONAVIR

ritonavir tablet, film coated

Product Information

Product Type	HUMAN PRESCRIPTION DRUG	Item Code (Source)	NDC:65862-687
Route of Administration	ORAL		

Active Ingredient/Active Moiety

Ingredient Name	Basis of Strength	Strength
RITONAVIR (UNII: O3J8G9O825) (RITONAVIR - UNII:O3J8G9O825)	RITONAVIR	100 mg

Inactive Ingredients

Ingredient Name	Strength
COPOVIDONE K25-31 (UNII: D9C330MD8B)	
STARCH, CORN (UNII: O8232NY3SJ)	
ANHYDROUS DIBASIC CALCIUM PHOSPHATE (UNII: L11K75P92J)	
DIBASIC CALCIUM PHOSPHATE DIHYDRATE (UNII: O7TSZ97GEP)	
HYPROMELLOSE 2910 (6 MPAS) (UNII: 0WZ8WG20P6)	
MANNITOL (UNII: 3OWL53L36A)	
MICROCRYSTALLINE CELLULOSE (UNII: OP1R32D61U)	
MICROCRYSTALLINE CELLULOSE 102 (UNII: PNR0YF693Y)	
POLYETHYLENE GLYCOL 400 (UNII: B697894SGQ)	
POLYETHYLENE GLYCOL 6000 (UNII: 30IQX730WE)	
POLYSORBATE 80 (UNII: 6OZP39ZG8H)	
POWDERED CELLULOSE (UNII: SMD1X3XO9M)	
SILICON DIOXIDE (UNII: ETJ7Z6XBU4)	
SODIUM STEARYL FUMARATE (UNII: 7CV7WJK4UJ)	
SORBITAN MONOLAURATE (UNII: 6W9PS8B71J)	
TALC (UNII: 7SEV7J4R1U)	
TITANIUM DIOXIDE (UNII: 15FIX9V2JP)	

Product Characteristics

Color	WHITE (White to Off-white)	Score	no score
Shape	OVAL (Ovaloid)	Size	19mm
Flavor		Imprint Code	Z;24
Contains			

Packaging

#	Item Code	Package Description	Marketing Start Date	Marketing End Date
1	NDC:65862-687-30	30 in 1 BOTTLE; Type 0: Not a Combination Product	09/17/2018	
2	NDC:65862-687-01	100 in 1 BOTTLE; Type 0: Not a Combination Product	09/17/2018	
3	NDC:65862-687-05	500 in 1 BOTTLE; Type 0: Not a Combination Product	09/17/2018	
4	NDC:65862-687-99	1000 in 1 BOTTLE; Type 0: Not a Combination Product	09/17/2018	

Marketing Information

Marketing Category	Application Number or Monograph Citation	Marketing Start Date	Marketing End Date
ANDA	ANDA206614	09/17/2018	

Labeler - Aurobindo Pharma Limited (650082092)

Establishment

Name	Address	ID/FEI	Business Operations
Aurobindo Pharma Limited		650381903	ANALYSIS(65862-687) , MANUFACTURE(65862-687)

Revised: 9/2019

Aurobindo Pharma Limited