

**IBUTILIDE FUMARATE- ibutilide fumarate injection, solution**  
**Heritage Pharmaceuticals Inc. d/b/a Avet Pharmaceuticals Inc.**

-----  
**Ibutilide Fumarate injection**  
**For intravenous infusion only**

**DESCRIPTION**

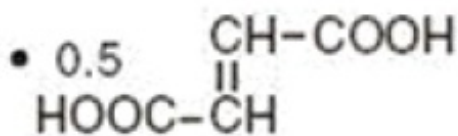
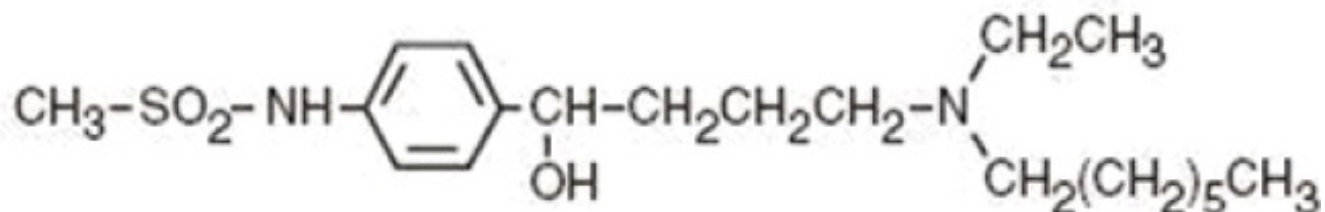
Ibutilide Fumarate Injection is an antiarrhythmic drug with predominantly class III (cardiac action potential prolongation) properties according to the Vaughan Williams Classification. Each milliliter of Ibutilide Fumarate Injection contains 0.1 mg of ibutilide fumarate, USP (equivalent to 0.087 mg ibutilide free base), 0.189 mg sodium acetate trihydrate, USP, 8.90 mg sodium chloride, USP, hydrochloric acid NF and/or sodium hydroxide NF to adjust pH to approximately 4.6, and Water for Injection, USP.

Ibutilide Fumarate Injection is an isotonic, clear, colorless, sterile aqueous solution.

Ibutilide fumarate has one chiral center, and exists as a racemate of the (+) and (–) enantiomers. The chemical name for ibutilide fumarate is Methanesulfonamide, N-{4-{4-(ethylheptylamino)-1-hydroxybutyl} phenyl}, (+) (–), (E)-2-butenedioate (1:0.5) (hemifumarate salt) Its molecular formula is C<sub>22</sub>H<sub>38</sub>N<sub>2</sub>O<sub>5</sub>S, and its molecular weight is 442.62.

Ibutilide fumarate is a white to off-white powder with an aqueous solubility of over 100 mg/mL at pH 7 or lower.

The structural formula is represented below:



**Ibutilide Fumarate**

**CLINICAL PHARMACOLOGY**

**Mechanism of Action**

Ibutilide fumarate injection prolongs action potential duration in isolated adult cardiac myocytes and increases both atrial and ventricular refractoriness *in vivo*, ie, class III

electrophysiologic effects. Voltage clamp studies indicate that ibutilide fumarate, at nanomolar concentrations, delays repolarization by activation of a slow, inward current (predominantly sodium), rather than by blocking outward potassium currents, which is the mechanism by which most other class III antiarrhythmics act. These effects lead to prolongation of atrial and ventricular action potential duration and refractoriness, the predominant electrophysiologic properties of ibutilide fumarate in humans that are thought to be the basis for its antiarrhythmic effect.

### **Electrophysiologic Effects**

Ibutilide fumarate produces mild slowing of the sinus rate and atrioventricular conduction. Ibutilide fumarate produces no clinically significant effect on QRS duration at intravenous doses up to 0.03 mg/kg administered over a 10-minute period. Although there is no established relationship between plasma concentration and antiarrhythmic effect, ibutilide fumarate produces dose-related prolongation of the QT interval, which is thought to be associated with its antiarrhythmic activity. (see **WARNINGS** for relationship between QTc prolongation and torsades de pointes-type arrhythmias.) In a study in healthy volunteers, intravenous infusions of ibutilide fumarate resulted in prolongation of the QT interval that was directly correlated with ibutilide plasma concentration during and after 10-minute and 8-hour infusions. A steep ibutilide concentration/response (QT prolongation) relationship was shown. The maximum effect was a function of both the dose of ibutilide fumarate and the infusion rate.

### **Hemodynamic Effects**

A study of hemodynamic function in patients with ejection fractions both above and below 35% showed no clinically significant effects on cardiac output, mean pulmonary arterial pressure, or pulmonary capillary wedge pressure at doses of ibutilide fumarate up to 0.03 mg/kg.

### **Pharmacokinetics**

After intravenous infusion, ibutilide plasma concentrations rapidly decrease in a multiexponential fashion. The pharmacokinetics of ibutilide are highly variable among subjects. Ibutilide has a high systemic plasma clearance that approximates liver blood flow (about 29 mL/min/kg), a large steady-state volume of distribution (about 11 L/kg) in healthy volunteers, and minimal (about 40%) protein binding. Ibutilide is also cleared rapidly and highly distributed in patients being treated for atrial flutter or atrial fibrillation. The elimination half-life averages about 6 hours (range from 2 to 12 hours). The pharmacokinetics of ibutilide are linear with respect to the dose of ibutilide fumarate over the dose range of 0.01 mg/kg to 0.10 mg/kg. The enantiomers of ibutilide fumarate have pharmacokinetic properties similar to each other and to ibutilide fumarate. The pharmacokinetics of ibutilide fumarate injection in patients with atrial flutter or atrial fibrillation are similar regardless of the type of arrhythmia, patient age, sex, or the concomitant use of digoxin, calcium channel blockers, or beta blockers.

### **Metabolism and elimination**

In healthy male volunteers, about 82% of a 0.01 mg/kg dose of [<sup>14</sup>C] ibutilide fumarate was excreted in the urine (about 7% of the dose as unchanged ibutilide) and the remainder (about 19%) was recovered in the feces. Eight metabolites of ibutilide were detected in metabolic profiling of urine. These

metabolites are thought to be formed primarily by  $\omega$ -oxidation followed by sequential  $\beta$ -oxidation of the heptyl side chain of ibutilide. Of the eight metabolites, only the  $\omega$ -hydroxy metabolite possesses class III electrophysiologic properties similar to that of ibutilide in an *in vitro* isolated rabbit myocardium model. The plasma concentrations of this active metabolite, however, are less than 10% of that of ibutilide.

## Clinical Studies

Treatment with intravenous ibutilide fumarate for acute termination of recent onset atrial flutter/fibrillation was evaluated in 466 patients participating in two randomized, double-blind, placebo-controlled clinical trials. Patients had their arrhythmias for 3 hours to 90 days, were anticoagulated for at least 2 weeks if atrial fibrillation was present more than 3 days, had serum potassium of at least 4 mEq/L and QTc below 440 msec, and were monitored by telemetry for at least 24 hours. Patients could not be on class I or other class III antiarrhythmics (these had to be discontinued at least 5 half-lives prior to infusion) but could be on calcium channel blockers, beta blockers, or digoxin. In one trial, single 10-minute infusions of 0.005 to 0.025 mg/kg were tested in parallel groups (0.3 to 1.5 mg in a 60 kg person). In the second trial, up to two infusions of ibutilide fumarate were evaluated—the first 1.0 mg, the second given 10 minutes after completion of the first infusion, either 0.5 or 1 mg. In a third double-blind study, 319 patients with atrial fibrillation or atrial flutter of 3 hours to 45 days duration were randomized to receive single, 10-minute intravenous infusions of either sotalol (1.5 mg/kg) or ibutilide fumarate (1 mg or 2 mg). Among patients with atrial flutter, 53% receiving 1 mg ibutilide fumarate and 70% receiving 2 mg ibutilide fumarate converted, compared to 18% of those receiving sotalol. In patients with atrial fibrillation, 22% receiving 1 mg ibutilide fumarate and 43% receiving 2 mg ibutilide fumarate converted compared to 10% of patients receiving sotalol.

Patients in registration trials were hemodynamically stable. Patients with specific cardiovascular conditions such as symptomatic heart failure, recent acute myocardial infarction, and angina were excluded. About two thirds had cardiovascular symptoms, and the majority of patients had left atrial enlargement, decreased left ventricular ejection fraction, a history of valvular disease, or previous history of atrial fibrillation or flutter. Electrical cardioversion was allowed 90 minutes after the infusion was complete. Patients could be given other antiarrhythmic drugs 4 hours postinfusion.

Results of the first two studies are shown in the tables below. Conversion of atrial flutter/ fibrillation usually (70% of those who converted) occurred within 30 minutes of the start of infusion and was dose related. The latest conversion seen was at 90 minutes after the start of the infusion. Most converted patients remained in normal sinus rhythm for 24 hours. Overall responses in these patients, defined as termination of arrhythmias for any length of time during or within 1 hour following completed infusion of randomized dose, were in the range of 43% to 48% at doses above 0.0125 mg/kg (vs 2% for placebo). Twenty-four hour responses were similar. For these atrial arrhythmias, ibutilide was more effective in patients with flutter than fibrillation ( $\geq 48\%$  vs  $\leq 40\%$ ).

---

### PERCENT OF PATIENTS WHO CONVERTED (First Trial)

	Ibutilide				
Placebo	0.005	0.01	0.015	0.025	

		PLACEBO	mg/kg	mg/kg	mg/kg	mg/kg
n		41	41	40	38	40
Both	Initially*	2	12	33	45	48
	At 24 hours†	2	12	28	42	43
Atrial flutter	Initially*	0	14	30	58	55
	At 24 hours*	0	14	30	58	50
Atrial fibrillation	Initially*	5	10	35	32	40
	At 24 hours†	5	10	25	26	35

\*Percent of patients who converted within 70 minutes after the start of infusion.

†Percent of patients who remained in sinus rhythm 24 hours after dosing.

### PERCENT OF PATIENTS WHO CONVERTED (Second Trial)

		Ibutilide		
n		Placebo	1.0 mg/0.5 mg	1.0 mg/1.0 mg
		86	86	94
Both	Initially*	2	43	44
	At 24 hours†	2	34	37
Atrial flutter	Initially*	2	48	63
	At 24 hours†	2	45	59
Atrial fibrillation	Initially*	2	38	25
	At 24 hours†	2	21	17

\*Percent of patients who converted within 90 minutes after the start of infusion.

†Percent of patients who remained in sinus rhythm 24 hours after dosing.

The numbers of patients who remained in the converted rhythm at the end of 24 hours were slightly less than those patients who converted initially, but the difference between conversion rates for ibutilide compared to placebo was still statistically significant. In long-term follow-up, approximately 40 % of all patients remained recurrence free, usually with chronic prophylactic treatment, 400 to 500 days after acute treatment, regardless of the method of conversion.

Patients with more recent onset of arrhythmia had a higher rate of conversion.

Response rates were 42% and 50% for patients with onset of atrial fibrillation/flutter for less than 30 days in the two efficacy studies compared to 16% and 31% in those with more chronic arrhythmias.

Ibutilide was equally effective in patients below and above 65 years of age and in men and women. Female patients constituted about 20% of patients in controlled studies.

### Post-cardiac Surgery

In a double-blind, parallel group study, 302 patients with atrial fibrillation (n=201) or atrial flutter (n=101) that occurred 1 to 7 days after coronary artery bypass graft or valvular surgery and lasted 1 hour to 3 days were randomized to receive two 10-minute infusions of placebo, or 0.25, 0.5 or 1 mg of ibutilide fumarate. Among patients with

atrial flutter, conversion rates at 1.5 hours were: placebo, 4%; 0.25 mg ibutilide fumarate, 56%; 0.5 mg ibutilide fumarate, 61%; and 1 mg ibutilide fumarate, 78%. Among patients with atrial fibrillation, conversion rates at 1.5 hours were: placebo, 20%; 0.25 mg ibutilide fumarate, 28%; 0.5 mg ibutilide fumarate, 42%, and 1 mg ibutilide fumarate, 44%. The majority of patients (53% and 72% in the 0.5-mg and 1-mg dose groups, respectively) converted to sinus rhythm remained in sinus rhythm for 24 hours. Patients were not given other antiarrhythmic drugs within 24 hours of ibutilide fumarate infusion in this study.

## **INDICATIONS AND USAGE**

Ibutilide fumarate injection is indicated for the rapid conversion of atrial fibrillation or atrial flutter of recent onset to sinus rhythm. Patients with atrial arrhythmias of longer duration are less likely to respond to ibutilide fumarate. The effectiveness of ibutilide has not been determined in patients with arrhythmias of more than 90 days in duration.

### **LIFE-THREATENING ARRHYTHMIAS—APPROPRIATE TREATMENT ENVIRONMENT**

**Ibutilide fumarate can cause potentially fatal arrhythmias, particularly sustained polymorphic ventricular tachycardia, usually in association with QT prolongation (torsades de pointes), but sometimes without documented QT prolongation. In registration studies, these arrhythmias, which require cardioversion, occurred in 1.7% of treated patients during, or within a number of hours of, use of Ibutilide fumarate. These arrhythmias can be reversed if treated promptly (see WARNINGS, Proarrhythmia). It is essential that Ibutilide fumarate be administered in a setting of continuous ECG monitoring and by personnel trained in identification and treatment of acute ventricular arrhythmias, particularly polymorphic ventricular tachycardia. Patients with atrial fibrillation of more than 2 to 3 days' duration must be adequately anticoagulated, generally for at least 2 weeks.**

### **CHOICE OF PATIENTS**

**Patients with chronic atrial fibrillation have a strong tendency to revert after conversion to sinus rhythm (see CLINICAL STUDIES) and treatments to maintain sinus rhythm carry risks. Patients to be treated with Ibutilide fumarate , therefore, should be carefully selected such that the expected benefits of maintaining sinus rhythm outweigh the immediate risks of Ibutilide fumarate , and the risks of maintenance therapy, and are likely to offer an advantage compared with alternative management.**

## **CONTRAINDICATIONS**

Ibutilide fumarate injection is contraindicated in patients who have previously demonstrated hypersensitivity to ibutilide fumarate or any of the other product components.

## **WARNINGS**

### **Proarrhythmia**

Like other antiarrhythmic agents, ibutilide fumarate injection can induce or worsen ventricular arrhythmias in some patients. This may have potentially fatal consequences. Torsades de pointes, a polymorphic ventricular tachycardia that develops in the setting of a prolonged QT interval, may occur because of the effect ibutilide fumarate has on cardiac repolarization, but ibutilide fumarate can also cause polymorphic VT in the absence of excessive prolongation of the QT interval. In general, with drugs that prolong the QT interval, the risk of torsades de pointes is thought to increase progressively as the QT interval is prolonged and may be worsened with bradycardia, a varying heart rate, and hypokalemia. In clinical trials conducted in patients with atrial fibrillation and atrial flutter, those with QTc intervals greater than 440 msec were not usually allowed to participate, and serum potassium had to be above 4 mEq/L. Although change in QTc was dose dependent for ibutilide, there was no clear relationship between risk of serious proarrhythmia and dose in clinical studies, possibly due to the small number of events. In clinical trials of intravenous ibutilide, patients with a history of congestive heart failure (CHF) or low left ventricular ejection fraction appeared to have a higher incidence of sustained polymorphic ventricular tachycardia (VT), than those without such underlying conditions; for sustained polymorphic VT the rate was 5.4% in patients with a history of CHF and 0.8% without it. There was also a suggestion that women had a higher risk of proarrhythmia, but the sex difference was not observed in all studies and was most prominent for nonsustained ventricular tachycardia. The incidence of sustained ventricular arrhythmias was similar in male (1.8%) and female (1.5%) patients, possibly due to the small number of events. Ibutilide fumarate is not recommended in patients who have previously demonstrated polymorphic ventricular tachycardia (eg, torsades de pointes).

During registration trials, 1.7% of patients with atrial flutter or atrial fibrillation treated with Ibutilide fumarate developed sustained polymorphic ventricular tachycardia requiring cardioversion. In these clinical trials, many initial episodes of polymorphic ventricular tachycardia occurred after the infusion of ibutilide fumarate was stopped but generally not more than 40 minutes after the start of the first infusion. There were, however, instances of recurrent polymorphic VT that occurred about 3 hours after the initial infusion. In two cases, the VT degenerated into ventricular fibrillation, requiring immediate defibrillation. Other cases were managed with cardiac pacing and magnesium sulfate infusions. Nonsustained polymorphic ventricular tachycardia occurred in 2.7% of patients and nonsustained monomorphic ventricular tachycardias occurred in 4.9% of the patients (see **ADVERSE REACTIONS**).

Proarrhythmic events must be anticipated. Skilled personnel and proper equipment, including cardiac monitoring equipment, intracardiac pacing facilities, a cardioverter/defibrillator, and medication for treatment of sustained ventricular tachycardia, including polymorphic ventricular tachycardia, must be available during and after administration of ibutilide fumarate. Before treatment with ibutilide fumarate, hypokalemia and hypomagnesemia should be corrected to reduce the potential for proarrhythmia. Patients should be observed with continuous ECG monitoring for at least 4 hours following infusion or until QTc has returned to baseline. Longer monitoring is required if any arrhythmic activity is noted. Management of polymorphic ventricular tachycardia includes discontinuation of ibutilide, correction of electrolyte abnormalities, especially potassium and magnesium, and overdrive cardiac pacing, electrical cardioversion, or defibrillation. Pharmacologic therapies include magnesium sulfate infusions. Treatment with antiarrhythmics should generally be avoided.

## **PRECAUTIONS**

### **General**

#### Antiarrhythmics

Class Ia antiarrhythmic drugs (Vaughan Williams Classification), such as disopyramide, quinidine, and procainamide, and other class III drugs, such as amiodarone and sotalol, should not be given concomitantly with ibutilide fumarate injection or within 4 hours postinfusion because of their potential to prolong refractoriness. In the clinical trials, class I or other class III antiarrhythmic agents were withheld for at least 5 half-lives prior to ibutilide infusion and for 4 hours after dosing, but thereafter were allowed at the physician's discretion.

#### Other drugs that prolong the QT interval

The potential for proarrhythmia may increase with the administration of ibutilide fumarate injection to patients who are being treated with drugs that prolong the QT interval, such as phenothiazines, tricyclic antidepressants, tetracyclic antidepressants, and certain antihistamine drugs (H<sub>1</sub> receptor antagonists).

#### Heart block

Of the nine (1.5%) ibutilide-treated patients with reports of reversible heart block, five had first degree, three had second degree, and one had complete heart block.

### **Laboratory Test Interactions**

None known.

### **Drug Interactions**

No specific pharmacokinetic or other formal drug interaction studies were conducted.

#### Digoxin

Supraventricular arrhythmias may mask the cardiotoxicity associated with excessive digoxin levels. Therefore, it is advisable to be particularly cautious in patients whose plasma digoxin levels are above or suspected to be above the usual therapeutic range. Co-administration of digoxin did not have effects on either the safety or efficacy of ibutilide in the clinical trials.

#### Calcium channel blocking agents

Co-administration of calcium channel blockers did not have any effect on either the safety or efficacy of ibutilide in the clinical trials.

#### Beta-adrenergic blocking agents

Co-administration of beta-adrenergic blocking agents did not have any effect on either the safety or efficacy of ibutilide in the clinical trials.

### **Carcinogenesis, Mutagenesis, Impairment of Fertility**

No animal studies have been conducted to determine the carcinogenic potential of ibutilide fumarate; however, it was not genotoxic in a battery of assays, (Ames assay, mammalian cell forward gene mutation assay, unscheduled DNA synthesis assay, and mouse micronucleus assay). Similarly, no drug-related effects on fertility or mating were noted in a reproductive study in rats in which ibutilide was administered orally to both sexes up to doses of 20 mg/kg/day. On a mg/m<sup>2</sup> basis, corrected for 3% bioavailability, the highest dose tested was approximately four times the maximum recommended

human dose (MRHD).

## **Pregnancy**

Ibutilide administered orally was teratogenic (abnormalities included adactyly, interventricular septal defects, and scoliosis) and embryocidal in reproduction studies in rats. On a  $\text{mg}/\text{m}^2$  basis, corrected for the 3% oral bioavailability, the “no adverse effect dose” (5  $\text{mg}/\text{kg}/\text{day}$  given orally) was approximately the same as the maximum recommended human dose (MRHD); the teratogenic dose (20  $\text{mg}/\text{kg}/\text{day}$  given orally) was about four times the MRHD on a  $\text{mg}/\text{m}^2$  basis, or 16 times the MRHD on a  $\text{mg}/\text{kg}$  basis. Ibutilide fumarate should not be administered to a pregnant woman unless clinical benefit outweighs potential risk to the fetus.

## **Nursing Mothers**

The excretion of ibutilide into breast milk has not been studied; accordingly, breastfeeding should be discouraged during therapy with ibutilide fumarate.

## **Pediatric Use**

Clinical trials with ibutilide fumarate in patients with atrial fibrillation and atrial flutter did not include anyone under the age of 18. Safety and effectiveness of ibutilide in pediatric patients has not been established.

## **Geriatric Use**

Clinical studies of ibutilide fumarate (involving 586 patients) did not include sufficient numbers of subjects less than age 65 (45%) to determine whether they respond differently from older subjects. Other reported clinical experience has not identified differences in responses between the elderly and younger patients. In general, dose selection for an elderly patient should be cautious, usually starting at the low end of the dosing range, reflecting the greater frequency of decreased hepatic, renal, or cardiac function, and of concomitant disease or other drug therapy.

## **Use in Patients with Hepatic or Renal Dysfunction**

The safety, effectiveness, and pharmacokinetics of ibutilide fumarate have not been established in patients with hepatic or renal dysfunction. However, it is unlikely that dosing adjustments would be necessary in patients with compromised renal or hepatic function based on the following considerations: (1) Ibutilide fumarate is indicated for rapid intravenous therapy (duration  $\leq 30$  minutes) and is dosed to a known, well-defined pharmacologic action (termination of arrhythmia) or to a maximum of two 10-minute infusions; (2) less than 10% of the dose of ibutilide fumarate is excreted unchanged in the urine; and (3) drug distribution appears to be one of the primary mechanisms responsible for termination of the pharmacologic effect. Nonetheless, patients with abnormal liver function should be monitored by telemetry for more than the 4-hour period generally recommended.

In 285 patients with atrial fibrillation or atrial flutter who were treated with ibutilide fumarate, the clearance of ibutilide was independent of renal function, as assessed by creatinine clearance (range 21 to 140  $\text{mL}/\text{min}$ ).

## **ADVERSE REACTIONS**



Ibutilide fumarate injection was generally well tolerated in clinical trials. Of the 586 patients with atrial fibrillation or atrial flutter who received ibutilide fumarate in phase II/III studies, 149 (25%) reported medical events related to the cardiovascular system, including sustained polymorphic ventricular tachycardia (1.7%) and nonsustained polymorphic ventricular tachycardia (2.7%).

Other clinically important adverse events with an uncertain relationship to ibutilide fumarate include the following (0.2% represents one patient): sustained monomorphic ventricular tachycardia (0.2%), nonsustained monomorphic ventricular tachycardia (4.9%), AV block (1.5%), bundle branch block (1.9%), ventricular extrasystoles (5.1%), supraventricular extrasystoles (0.9%), hypotension/postural hypotension (2%), bradycardia/sinus bradycardia (1.2%), nodal arrhythmia (0.7%), congestive heart failure (0.5%), tachycardia/sinus tachycardia/supraventricular tachycardia (2.7%), idioventricular rhythm (0.2%), syncope (0.3%), and renal failure (0.3%). The incidence of these events, except for syncope, was greater in the group treated with ibutilide fumarate than in the placebo group.

Another adverse reaction that may be associated with the administration of ibutilide fumarate was nausea, which occurred with a frequency greater than 1% more in ibutilide-treated patients than those treated with placebo.

The medical events reported for more than 1% of the placebo- and ibutilide-treated patients are shown in the following Table.

<b>Treatment-Emergent Medical Events With Frequency of More Than 1% and Higher Than That of Placebo</b>				
<b>Event</b>	<b>Placebo N=127</b>		<b>All Ibutilide N=586</b>	
	<b>Patients</b>		<b>Patients</b>	
	<b>n</b>	<b>%</b>	<b>n</b>	<b>%</b>
<b>CARDIOVASCULAR</b>				
Ventricular extrasystoles	1	0.8	30	5.1
Nonsustained monomorphic VT	1	0.8	29	4.9
Nonsustained polymorphic VT	—	—	16	2.7
Hypotension	2	1.6	12	2.0
Bundle branch block	—	—	11	1.9
Sustained polymorphic VT	—	—	10	1.7
AV block	1	0.8	9	1.5
Hypertension	—	—	7	1.2

QT segment prolonged	—	—	7	1.2
Bradycardia	1	0.8	7	1.2
Palpitation	1	0.8	6	1.0
Tachycardia	1	0.8	16	2.7
<b>GASTROINTESTINAL</b>				
Nausea	1	0.8	11	1.9
<b>CENTRAL NERVOUS SYSTEM</b>				
Headache	4	3.1	21	3.6

In the post-cardiac surgery study (see **CLINICAL STUDIES**), similar types of medical events were reported. In the 1 mg ibutilide fumarate treatment group (N=70), 2 patients (2.9%) developed sustained polymorphic ventricular tachycardia and 2 other patients (2.9%) developed nonsustained polymorphic ventricular tachycardia. Polymorphic ventricular tachycardia was not reported in the 73 patients in the 0.5 mg dose group or in the 75 patients in the 0.25 mg dose group.

## **OVERDOSAGE**

### **Acute Experience in Animals**

Acute overdose in animals results in CNS toxicity; notably, CNS depression, rapid gasping breathing, and convulsions. The intravenous median lethal dose in the rat was more than 50 mg/kg which is, on a mg/m<sup>2</sup> basis, at least 250 times the maximum recommended human dose.

### **Human Experience**

In the registration trials with ibutilide fumarate injection, four patients were unintentionally overdosed. The largest dose was 3.4 mg administered over 15 minutes. One patient (0.025 mg/kg) developed increased ventricular ectopy and monomorphic ventricular tachycardia, another patient (0.032 mg/kg) developed AV block—3rd degree and nonsustained polymorphic VT, and two patients (0.038 and 0.020 mg/kg) had no medical event reports. Based on known pharmacology, the clinical effects of an overdose with ibutilide could exaggerate the expected prolongation of repolarization seen at usual clinical doses. Medical events (eg, proarrhythmia, AV block) that occur after the overdose should be treated with measures appropriate for that condition.

## **DOSAGE AND ADMINISTRATION**

The recommended dose based on controlled trials (see **CLINICAL STUDIES**) is outlined in the Table below. Ibutilide infusion should be stopped as soon as the presenting arrhythmia is terminated or in the event of sustained or nonsustained ventricular tachycardia, or marked prolongation of QT or QTc.

## Recommended Dose of Ibutilide Fumarate Injection

<b>Patient Weight</b>	<b>Initial Infusion (over 10 minutes)</b>	<b>Second Infusion</b>
60 kg (132 lb) or more	One vial (1 mg ibutilide fumarate)	<i>If the arrhythmia does not terminate within 10 minutes after the end of the initial infusion, a second 10-minute infusion of equal strength may be administered 10 minutes after completion of the first infusion.</i>
Less than 60 kg (132 lb)	0.1 mL/kg (0.01 mg/kg ibutilide fumarate)	

In a trial comparing ibutilide and sotalol (see **CLINICAL STUDIES**), 2 mg ibutilide fumarate administered as a single infusion to patients weighing more than 60 kg was also effective in terminating atrial fibrillation or atrial flutter.

In the post-cardiac surgery study (see **CLINICAL STUDIES**), one or two intravenous infusions of 0.5 mg (0.005 mg/kg per dose for patients weighing less than 60 kg) was effective in terminating atrial fibrillation or atrial flutter.

Patients should be observed with continuous ECG monitoring for at least 4 hours following infusion or until QTc has returned to baseline. Longer monitoring is required if any arrhythmic activity is noted. Skilled personnel and proper equipment (see **WARNINGS, Proarrhythmia**), such as a cardioverter/defibrillator, and medication for treatment of sustained ventricular tachycardia, including polymorphic ventricular tachycardia, must be available during administration of ibutilide fumarate and subsequent monitoring of the patient.

### Dilution

Ibutilide fumarate injection may be administered undiluted or diluted in 50 mL of diluent. Ibutilide fumarate may be added to 0.9% Sodium Chloride Injection or 5% Dextrose Injection before infusion. The contents of one 10 mL vial (0.1 mg/mL) may be added to a 50 mL infusion bag to form an admixture of approximately 0.017 mg/mL ibutilide fumarate. Parenteral drug products should be inspected visually for particulate matter and discoloration prior to administration whenever solution and container permit.

### Compatibility and Stability

The following diluents are compatible with ibutilide fumarate injection (0.1 mg/mL):

#### 5% Dextrose Injection

#### 0.9% Sodium Chloride Injection

The following intravenous solution containers are compatible with admixtures of ibutilide fumarate injection (0.1 mg/mL):

polyvinyl chloride plastic bags

polyolefin bags

Admixtures of the product, with approved diluents, are chemically and physically stable for 24 hours at room temperature (15° to 30° C or 59° to 86° F) and for 48 hours at refrigerated temperatures (2° to 8°C or 36° to 46°F). Strict adherence to the use of aseptic technique during the preparation of the admixture is recommended in order to maintain sterility.

## **HOW SUPPLIED**

Ibutilide Fumarate Injection is supplied as an acetate-buffered isotonic solution at a concentration of 0.1 mg/mL that has been adjusted to approximately pH 4.6 in 10 mL clear glass, single-dose, flip-off vials.

Single-dose 10 mL vial, 1 mg /10 mL (0.1 mg/mL) NDC 23155-326-31  
Store at 20° to 25°C (68° to 77°F); excursions permitted between 15° to 30°C (59° to 86°F) [see USP Controlled Room Temperature]. Store vial in carton until used.

Manufactured by:

**Emcure Pharmaceuticals Ltd.,**  
Sanand, Ahmedabad - 382110, India.

Manufactured for:

**Avet Pharmaceuticals Inc.**  
East Brunswick, NJ 08816  
1.866.901.DRUG (3784)



**Revised: 03/2024**

### **Principal display panel- Label**

NDC 23155-326-31  
Rx Only  
Ibutilide Fumarate Injection  
1 mg/10 mL  
(0.1 mg/mL)  
For I.V Use Only  
10 mL Single-Dose Vial

**NDC 23155-326-31 Rx Only**

**IBUTILIDE**  
**Fumarate Injection**

**1 mg/10 mL**  
**(0.1 mg/mL)**

**For Intravenous Use Only**  
**Discard unused portion**

**10 mL Single-Dose Vial**

**Each mL contains:** Ibutilide Fumarate USP, 0.1 mg.  
Also contains Sodium Chloride USP, 8.90 mg; Sodium Acetate Trihydrate USP, 0.189 mg; Water for Injection, USP.  
When necessary, pH was adjusted with Sodium Hydroxide, NF and/or Hydrochloric Acid, NF

**Store at 20° to 25°C (68° to 77°F); excursions permitted between 15° to 30°C (59° to 86°F) [see USP Controlled Room Temperature].**

**Usual Dosage:**

See accompanying prescribing information.

Mfg. Lic. No.: G/28/1655

Mfg by: **Emcure Pharmaceuticals Ltd.**,  
Sanand, Ahmedabad - 382110, India.

Mfg for: **Avet Pharmaceuticals Inc.**

East Brunswick, NJ 08816

1.866.901.DRUG (3784)



**Rev. 02/2024**

510490416IN01



N 23155 32631 4

NON VARNISHED AREA  
23 x 8 mm

LOT :

EXP :

NDC 23155-326-31

Rx Only

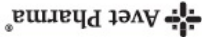
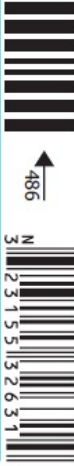


Ibutilide Fumarate Injection

1 mg/10 mL

(0.1 mg/mL)

For Intravenous Use Only

10 mL Single-Dose Vial

 <b>IBUTILIDE</b> Fumarate Injection <b>1 mg/10 mL</b> (0.1 mg/mL) NDC 23155-326-31 Rx Only			510490415IN01
<b>IBUTILIDE</b> Fumarate Injection <b>1 mg/10 mL</b> (0.1 mg/mL)	NON VARNISHED AREA* 45 x 23 mm Batch details & 2 D barcode along-with human readable details to be overprinted during batch packing as per specimen.	<b>IBUTILIDE</b> Fumarate Injection <b>1 mg/10 mL</b> (0.1 mg/mL)	<b>Each mL contains:</b> Ibutilide Fumarate USP, 0.1 mg. Also contains Sodium Chloride USP, 8.90 mg; Sodium Acetate Trihydrate USP, 0.189 mg; Water for Injection, USP. When necessary, pH was adjusted with Sodium Hydroxide, NF and/or Hydrochloric Acid, NF <b>Usual Dosage:</b> See accompanying prescribing information.
For Intravenous Use Only		For Intravenous Use Only	<b>Store at 20° to 25°C (68° to 77°F); excursions permitted between 15° to 30°C (59° to 86°F)[see USP Controlled Room Temperature].</b>
<b>10 mL Single-Dose Vial</b>	Mfg by: <b>Emcure Pharmaceuticals Ltd.,</b> Sanand, Ahmedabad - 382110, India.	<b>10 mL Single-Dose Vial</b>	Store vial in carton until used. Discard unused portion.
	Mfg for: <b>Avet Pharmaceuticals Inc.</b> East Brunswick, NJ 08816 1.866.901.DRUG (3784)		Mfg. Lic. No.: G/28/1655 <b>Rev. 07/2023</b>

## IBUTILIDE FUMARATE

ibutilide fumarate injection, solution

### Product Information

<b>Product Type</b>	HUMAN PRESCRIPTION DRUG	<b>Item Code (Source)</b>	NDC:23155-326
<b>Route of Administration</b>	INTRAVENOUS		

### Active Ingredient/Active Moiety

Ingredient Name	Basis of Strength	Strength
<b>IBUTILIDE FUMARATE</b> (UNII: 9L5X4M5L6I) (IBUTILIDE - UNII:2436VX1U9B)	IBUTILIDE FUMARATE	1 mg in 10 mL

### Inactive Ingredients

Ingredient Name	Strength
<b>SODIUM ACETATE</b> (UNII: 4550K0SC9B)	
<b>SODIUM CHLORIDE</b> (UNII: 451W47IQ8X)	
<b>HYDROCHLORIC ACID</b> (UNII: QTT17582CB)	
<b>WATER</b> (UNII: 059QF0KO0R)	

**SODIUM HYDROXIDE** (UNII: 55X04QC32I)

### Packaging

#	Item Code	Package Description	Marketing Start Date	Marketing End Date
1	NDC:23155-326-31	1 in 1 CARTON	04/01/2024	
1		10 mL in 1 VIAL, GLASS; Type 0: Not a Combination Product		

### Marketing Information

Marketing Category	Application Number or Monograph Citation	Marketing Start Date	Marketing End Date
ANDA	ANDA204146	04/01/2024	

**Labeler** - Heritage Pharmaceuticals Inc. d/b/a Avet Pharmaceuticals Inc. (780779901)

**Registrant** - AVET LIFESCIENCES PRIVATE LIMITED (853181664)

### Establishment

Name	Address	ID/FEI	Business Operations
Emcure Pharmaceuticals Limited		675467924	ANALYSIS(23155-326) , MANUFACTURE(23155-326) , label(23155-326) , pack(23155-326)

Revised: 3/2024

Heritage Pharmaceuticals Inc. d/b/a Avet Pharmaceuticals Inc.