

COLGATE SPARKLING WHITE MINT ZING- sodium monofluorophosphate gel, dentifrice
Colgate-Palmolive Company

Disclaimer: Most OTC drugs are not reviewed and approved by FDA, however they may be marketed if they comply with applicable regulations and policies. FDA has not evaluated whether this product complies.

Colgate® Sparkling White® Mint Zing Fluoride Toothpaste Gel

Drug Facts

Active ingredient

Sodium monofluorophosphate 0.76% (0.14% w/v fluoride ion)

Purpose

Anticavity

Use

helps protect against cavities

Warnings

Keep out of reach of children under 6 years of age.

If more than used for brushing is accidentally swallowed, get medical help or contact a Poison Control Center right away.

Directions

adults and children 2 years of age and older	brush teeth thoroughly, preferably after each meal or at least twice a day, or as directed by a dentist or physician
children 2 to 6 years	use only a pea sized amount and supervise child's brushing and rinsing (to minimize swallowing)
children under 2 years	ask a dentist or physician

Inactive ingredients

glycerin, hydrated silica, water, sodium bicarbonate, PEG-12, sodium lauryl sulfate, flavor, sodium hydroxide, cellulose gum, carrageenan, sodium saccharin, FD&C blue no. 1, D&C yellow no. 10

Questions?

1-800-468-6502

Dist. by:

COLGATE-PALMOLIVE COMPANY

New York, NY 10022

PRINCIPAL DISPLAY PANEL - 130 g Tube Carton

Colgate®

Fluoride Toothpaste

Baking Soda

SPARKLING

WHITE®

Whitens & Helps Protect

Teeth from Stains

Mint Zing

gel

NET WT 4.6 OZ (130 g)

Colgate®

Fluoride Toothpaste

NET WT 4.6 OZ (130 g)



Colgate®

Fluoride Toothpaste

NET WT 4.6 OZ (130 g)



Drug Facts		Drug Facts (continued)	
Active ingredient Sodium monofluorophosphate 0.76% (0.14% w/v fluoride ion)...	Purpose Anticavity	Directions adults and children 2 years of age and older	brush teeth thoroughly, preferably after each meal or at least twice a day, or as directed by a dentist or physician
Use helps protect against cavities		children 2 to 6 years	use only a pea sized amount and supervise child's brushing and rinsing (to minimize swallowing)
Warnings Keep out of reach of children under 6 years of age. If more than used for brushing is accidentally swallowed, get medical help or contact a Poison Control Center right away.		children under 2 years	ask a dentist or physician
		Inactive ingredients glycerin, hydrated silica, water, sodium bicarbonate, PEG-12, sodium lauryl sulfate, flavor, sodium hydroxide, cellulose gum, carrageenan, sodium saccharin, FD&C blue no. 1, D&C yellow no. 10	
		Questions? 1-800-468-6502	

For Healthy Teeth:

- Brush your teeth at least twice a day
- Floss daily
- Visit your dentist regularly

www.colgate.com
Made in Mexico

Dist. by:
COLGATE-PALMOLIVE COMPANY
New York, NY 10022

SPARKLING WHITE®

with Baking Soda



Natural Spearmint & Peppermint Essential Oils Will Dazzle Your Mouth

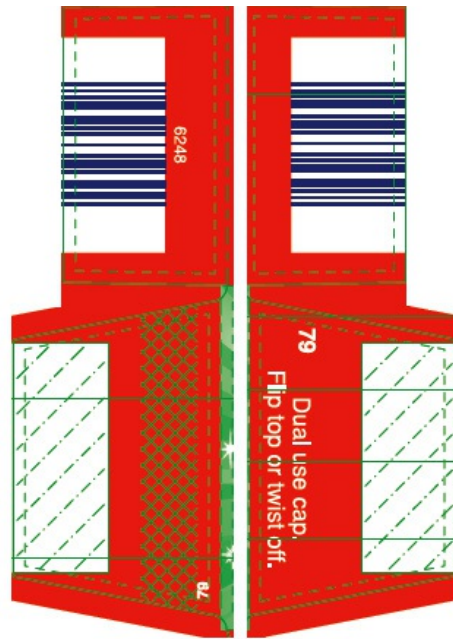
Stain Protection Formula Helps Remove & Helps Prevent Stain Build-up

Whitens Teeth & Fights Cavities









COLGATE SPARKLING WHITE MINT ZING

sodium monofluorophosphate gel, dentifrice

Product Information

Product Type	HUMAN OTC DRUG	Item Code (Source)	NDC:35000-919
Route of Administration	DENTAL		

Active Ingredient/Active Moiety

Ingredient Name	Basis of Strength	Strength
SODIUM MONOFLUOROPHOSPHATE (UNII: C810JCZ56Q) (FLUORIDE ION - UNII:Q80VPU408O)	FLUORIDE ION	1 mg in 1 g

Inactive Ingredients

Ingredient Name	Strength
GLYCERIN (UNII: PDC6A3C0OX)	502.85 mg in 1 g
HYDRATED SILICA (UNII: Y6O7T4G8P9)	
WATER (UNII: 059QF0KO0R)	
SODIUM BICARBONATE (UNII: 8MDF5V39QO)	
POLYETHYLENE GLYCOL 600 (UNII: NL4J9F21N9)	
SODIUM LAURYL SULFATE (UNII: 368GB5141J)	
SODIUM HYDROXIDE (UNII: 55X04QC32I)	
CARBOXYMETHYLCELLULOSE SODIUM, UNSPECIFIED FORM (UNII: K679OBS311)	
CARRAGEENAN (UNII: 5C69YCD2YJ)	
SACCHARIN SODIUM (UNII: SB8ZUX40TY)	
FD&C BLUE NO. 1 (UNII: H3R47K3TBD)	
D&C YELLOW NO. 10 (UNII: 35SW5USQ3G)	

Product Characteristics

Color	GREEN	Score	
Shape		Size	
Flavor	PEPPERMINT	Imprint Code	
Contains			

Packaging

#	Item Code	Package Description	Marketing Start Date	Marketing End Date
1	NDC:35000-919-79	1 in 1 CARTON	03/01/2013	
1		79 g in 1 TUBE; Type 0: Not a Combination Product		
2	NDC:35000-919-69	1 in 1 CARTON	03/01/2013	
2		113 g in 1 TUBE; Type 0: Not a Combination Product		
3	NDC:35000-919-46	1 in 1 CARTON	03/01/2013	
3		130 g in 1 TUBE; Type 0: Not a Combination Product		
4	NDC:35000-919-64	1 in 1 CARTON	03/01/2013	
4		181 g in 1 TUBE; Type 0: Not a Combination Product		
5	NDC:35000-919-82	1 in 1 CARTON	03/01/2013	
5		232 g in 1 TUBE; Type 0: Not a Combination Product		
6	NDC:35000-919-60	1 in 1 CARTON	03/01/2013	
6		170 g in 1 TUBE; Type 0: Not a Combination Product		
7	NDC:35000-919-48	1 in 1 CARTON	03/01/2013	
7		226 g in 1 TUBE; Type 0: Not a Combination Product		
8	NDC:35000-919-58	1 in 1 CARTON	03/01/2013	
8		70 g in 1 TUBE; Type 0: Not a Combination Product		
9	NDC:35000-919-92	1 in 1 CARTON	03/01/2013	
9		141 g in 1 TUBE; Type 0: Not a Combination Product		

Marketing Information

Marketing Category	Application Number or Monograph Citation	Marketing Start Date	Marketing End Date
OTC MONOGRAPH FINAL	part355	03/01/2013	

Labeler - Colgate-Palmolive Company (001344381)

Revised: 12/2019

Colgate-Palmolive Company