

# **DIPROLENE- betamethasone dipropionate ointment**

## **Organon LLC**

-----

### **HIGHLIGHTS OF PRESCRIBING INFORMATION**

**These highlights do not include all the information needed to use DIPROLENE Ointment safely and effectively. See full prescribing information for DIPROLENE Ointment.**

**DIPROLENE® (augmented betamethasone dipropionate) ointment, for topical use**  
**Initial U.S. Approval: 1983**

### ----- **INDICATIONS AND USAGE** -----

DIPROLENE Ointment is a corticosteroid indicated for the relief of the inflammatory and pruritic manifestations of corticosteroid-responsive dermatoses in patients 13 years of age and older. (1)

### ----- **DOSAGE AND ADMINISTRATION** -----

- Apply a thin film to the affected skin areas once or twice daily. (2)
- Discontinue therapy when control is achieved. (2)
- Limit therapy to no more than 2 consecutive weeks. (2)
- Use no more than 50 g per week. (2)
- Do not use with occlusive dressings unless directed by a physician. (2)
- Avoid use on the face, groin, or axillae, or if skin atrophy is present at the treatment site. (2)
- Not for oral, ophthalmic, or intravaginal use. (2)

### ----- **DOSAGE FORMS AND STRENGTHS** -----

- Ointment, 0.05% (3)

### ----- **CONTRAINDICATIONS** -----

- Hypersensitivity to any component of this medicine. (4)

### ----- **WARNINGS AND PRECAUTIONS** -----

- Effects on endocrine system: DIPROLENE Ointment can cause reversible HPA axis suppression with the potential for glucocorticosteroid insufficiency during and after withdrawal of treatment. Risk factor(s) include the use of high-potency topical corticosteroids, use over a large surface area or to areas under occlusion, prolonged use, altered skin barrier, liver failure, and use in pediatric patients. Modify use should HPA axis suppression develop. (5.1, 8.4)
- Ophthalmic Adverse Reactions: DIPROLENE Ointment may increase the risk of cataracts and glaucoma. If visual symptoms occur, consider referral to an ophthalmologist for evaluation. (5.2)

### ----- **ADVERSE REACTIONS** -----

Most common adverse reactions (<1%) are: erythema, folliculitis, pruritus, and vesiculation. (6.1)

**To report SUSPECTED ADVERSE REACTIONS, contact Organon LLC, a subsidiary of Organon & Co., at 1-844-674-3200 or FDA at 1-800-FDA-1088 or [www.fda.gov/medwatch](http://www.fda.gov/medwatch).**

**See 17 for PATIENT COUNSELING INFORMATION and FDA-approved patient labeling.**

**Revised: 2/2022**

---

## **FULL PRESCRIBING INFORMATION: CONTENTS\***

### **1 INDICATIONS AND USAGE**

### **2 DOSAGE AND ADMINISTRATION**

### **3 DOSAGE FORMS AND STRENGTHS**

### **4 CONTRAINDICATIONS**

### **5 WARNINGS AND PRECAUTIONS**

- 5.1 Effects on Endocrine System
- 5.2 Ophthalmic Adverse Reactions
- 5.3 Allergic Contact Dermatitis

## **6 ADVERSE REACTIONS**

- 6.1 Clinical Trials Experience
- 6.2 Postmarketing Experience

## **8 USE IN SPECIFIC POPULATIONS**

- 8.1 Pregnancy
- 8.2 Lactation
- 8.4 Pediatric Use
- 8.5 Geriatric Use

## **11 DESCRIPTION**

## **12 CLINICAL PHARMACOLOGY**

- 12.1 Mechanism of Action
- 12.2 Pharmacodynamics
- 12.3 Pharmacokinetics

## **13 NONCLINICAL TOXICOLOGY**

- 13.1 Carcinogenesis, Mutagenesis, Impairment of Fertility

## **14 CLINICAL STUDIES**

## **16 HOW SUPPLIED/STORAGE AND HANDLING**

## **17 PATIENT COUNSELING INFORMATION**

\* Sections or subsections omitted from the full prescribing information are not listed.

---

## **FULL PRESCRIBING INFORMATION**

### **1 INDICATIONS AND USAGE**

DIPROLENE® Ointment is a corticosteroid indicated for the relief of the inflammatory and pruritic manifestations of corticosteroid-responsive dermatoses in patients 13 years of age or older.

### **2 DOSAGE AND ADMINISTRATION**

Apply a thin film of DIPROLENE Ointment to the affected skin areas once or twice daily.

Therapy should be discontinued when control is achieved. If no improvement is seen within 2 weeks, reassessment of diagnosis may be necessary. DIPROLENE Ointment is a super-high-potency topical corticosteroid. Treatment with DIPROLENE Ointment should not exceed 50 g per week because of the potential for the drug to suppress the hypothalamic-pituitary-adrenal (HPA) axis [see *Warnings and Precautions (5.1)*].

DIPROLENE Ointment should not be used with occlusive dressings unless directed by a physician.

Avoid use on the face, groin, or axillae, or if skin atrophy is present at the treatment site.

Avoid contact with eyes. Wash hands after each application.

DIPROLENE Ointment is for topical use only. It is not for oral, ophthalmic, or intravaginal use.

### **3 DOSAGE FORMS AND STRENGTHS**

Ointment, 0.05%. Each gram of DIPROLENE Ointment, 0.05% contains 0.643 mg betamethasone dipropionate (equivalent to 0.5 mg betamethasone) in a white to off-white ointment base.

### **4 CONTRAINDICATIONS**

DIPROLENE Ointment is contraindicated in patients who are hypersensitive to betamethasone dipropionate, to other corticosteroids, or to any ingredient in this preparation.

### **5 WARNINGS AND PRECAUTIONS**

#### **5.1 Effects on Endocrine System**

DIPROLENE Ointment can produce reversible hypothalamic-pituitary-adrenal (HPA) axis suppression with the potential for glucocorticosteroid insufficiency. This may occur during treatment or after withdrawal of treatment. Factors that predispose to HPA axis suppression include the use of high-potency steroids, large treatment surface areas, prolonged use, use of occlusive dressings, altered skin barrier, liver failure, and young age. Evaluation for HPA axis suppression may be done by using the adrenocorticotrophic hormone (ACTH) stimulation test.

In a trial evaluating the effects of DIPROLENE Ointment on the HPA axis, at 14 g per day, DIPROLENE Ointment was shown to suppress the plasma levels of adrenal cortical hormones following repeated application to diseased skin in subjects with psoriasis. These effects were reversible upon discontinuation of treatment. At 7 g per day, DIPROLENE Ointment was shown to cause minimal inhibition of the HPA axis when applied 2 times daily for 2 to 3 weeks in healthy subjects and in subjects with psoriasis and eczematous disorders.

With 6 g to 7 g of DIPROLENE Ointment applied once daily for 3 weeks, no significant inhibition of the HPA axis was observed in subjects with psoriasis and atopic dermatitis, as measured by plasma cortisol and 24-hour urinary 17-hydroxy-corticosteroid levels.

If HPA axis suppression is documented, gradually withdraw the drug, reduce the frequency of application, or substitute with a less potent corticosteroid. Infrequently, signs and symptoms of steroid withdrawal may occur, requiring supplemental systemic corticosteroids.

Cushing's syndrome and hyperglycemia may also occur with topical corticosteroids. These events are rare and generally occur after prolonged exposure to excessively large doses, especially of high-potency topical corticosteroids.

Pediatric patients may be more susceptible to systemic toxicity due to their larger skin surface to body mass ratios [see *Use in Specific Populations (8.4)*].

## **5.2 Ophthalmic Adverse Reactions**

Use of topical corticosteroids, including DIPROLENE Ointment, may increase the risk of posterior subcapsular cataracts and glaucoma. Cataracts and glaucoma have been reported postmarketing with the use of topical corticosteroid products, including DIPROLENE Ointment [see *Adverse Reactions (6.2)*].

Avoid contact of DIPROLENE Ointment with eyes. Advise patients to report any visual symptoms and consider referral to an ophthalmologist for evaluation.

## **5.3 Allergic Contact Dermatitis**

Allergic contact dermatitis with corticosteroids is usually diagnosed by observing failure to heal rather than noting a clinical exacerbation. Such an observation should be corroborated with appropriate diagnostic patch testing. If irritation develops, topical corticosteroids should be discontinued and appropriate therapy instituted.

# **6 ADVERSE REACTIONS**

## **6.1 Clinical Trials Experience**

Because clinical trials are conducted under widely varying conditions, adverse reaction rates observed in the clinical trials of a drug cannot be directly compared to rates in the clinical trials of another drug and may not reflect the rates observed in clinical practice.

In controlled clinical trials, adverse reactions associated with the use of DIPROLENE Ointment reported at a frequency of less than 1% included erythema, folliculitis, pruritus, and vesiculation.

## **6.2 Postmarketing Experience**

Because adverse reactions are reported voluntarily from a population of uncertain size, it is not always possible to reliably estimate their frequency or establish a causal relationship to drug exposure.

Postmarketing reports for local adverse reactions to topical corticosteroids may also include: skin atrophy, telangiectasias, burning, irritation, dryness, acneiform eruptions, hypopigmentation, perioral dermatitis, allergic contact dermatitis, secondary infection, hypertrichosis, striae, and miliaria.

Hypersensitivity reactions, consisting of predominantly skin signs and symptoms, e.g., contact dermatitis, pruritus, bullous dermatitis, and erythematous rash have been reported.

Ophthalmic adverse reactions of cataracts, glaucoma, increased intraocular pressure, and central serous chorioretinopathy have been reported with the use of topical corticosteroids, including topical betamethasone products.

# **8 USE IN SPECIFIC POPULATIONS**

## **8.1 Pregnancy**

Risk Summary

There are no available data on DIPROLENE Ointment use in pregnant women to identify a drug-associated risk of major birth defects, miscarriage, or adverse maternal or fetal outcomes.

Observational studies suggest an increased risk of low birthweight infants with the use of greater than 300 grams of potent or very potent topical corticosteroid during a pregnancy. Advise pregnant women that DIPROLENE Ointment may increase the risk of having a low birthweight infant and to use DIPROLENE Ointment on the smallest area of skin and for the shortest duration possible.

In animal reproduction studies, increased malformations, including umbilical hernias, cephalocele, and cleft palate, were observed after intramuscular administration of betamethasone dipropionate to pregnant rabbits. The available data do not allow the calculation of relevant comparisons between the systemic exposure of betamethasone dipropionate in animal studies to the systemic exposure that would be expected in humans after topical use of DIPROLENE Ointment (*see Data*).

The background risk of major birth defects and miscarriage for the indicated population is unknown. All pregnancies have a background risk of birth defect, loss, or other adverse outcomes. In the U.S. general population, the estimated risk of major birth defects and miscarriage in clinically recognized pregnancies is 2 to 4% and 15 to 20%, respectively.

## Data

### *Animal Data*

Betamethasone dipropionate has been shown to cause malformations in rabbits when given by the intramuscular route at doses of 0.05 mg/kg. The abnormalities observed included umbilical hernias, cephalocele, and cleft palate.

## **8.2 Lactation**

### Risk Summary

There are no data regarding the presence of betamethasone dipropionate in human milk, the effects on the breastfed infant, or the effects on milk production after topical application of DIPROLENE Ointment to women who are breastfeeding.

It is possible that topical administration of betamethasone dipropionate could result in sufficient systemic absorption to produce detectable quantities in human milk. The developmental and health benefits of breastfeeding should be considered along with the mother's clinical need for DIPROLENE Ointment and any potential adverse effects on the breastfed infant from DIPROLENE Ointment or from the underlying maternal condition.

### Clinical Considerations

To minimize potential exposure to the breastfed infant via breast milk, use DIPROLENE Ointment on the smallest area of skin and for the shortest duration possible while breastfeeding. Advise breastfeeding women not to apply DIPROLENE Ointment directly to the nipple and areola to avoid direct infant exposure [*see Use in Specific Populations (8.4)*].

## **8.4 Pediatric Use**

Use of DIPROLENE Ointment in pediatric patients younger than 13 years of age is not

recommended due to the potential for HPA axis suppression [see *Warnings and Precautions (5.1)*].

In an open-label HPA axis safety trial in subjects 3 months to 12 years of age with atopic dermatitis, DIPROLENE AF Cream 0.05% was applied twice daily for 2 to 3 weeks over a mean body surface area of 58% (range 35% to 95%). In 19 of 60 (32%) evaluable subjects, adrenal suppression was indicated by either a  $\leq 5$  mcg/dL pre-stimulation cortisol, or a cosyntropin post-stimulation cortisol  $\leq 18$  mcg/dL and/or an increase of  $< 7$  mcg/dL from the baseline cortisol. Out of the 19 subjects with HPA axis suppression, 4 subjects were tested 2 weeks after discontinuation of DIPROLENE AF Cream, and 3 of the 4 (75%) had complete recovery of HPA axis function. The proportion of subjects with adrenal suppression in this trial was progressively greater, the younger the age group.

Because of a higher ratio of skin surface area to body mass, pediatric patients are at a greater risk than adults of systemic toxicity when treated with topical drugs. They are, therefore, also at greater risk of HPA axis suppression and adrenal insufficiency upon the use of topical corticosteroids.

Rare systemic effects such as Cushing's syndrome, linear growth retardation, delayed weight gain, and intracranial hypertension have been reported in pediatric patients, especially those with prolonged exposure to large doses of high potency topical corticosteroids.

Local adverse reactions including skin atrophy have also been reported with use of topical corticosteroids in pediatric patients.

Avoid use of DIPROLENE Ointment in the treatment of diaper dermatitis.

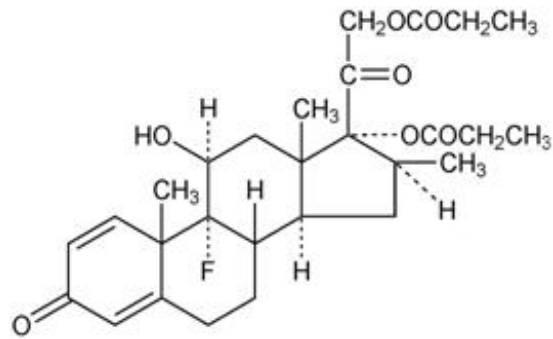
## **8.5 Geriatric Use**

Clinical trials of DIPROLENE Ointment included 225 subjects who were 65 years of age and over and 46 subjects who were 75 years of age and over. No overall differences in safety or effectiveness were observed between these subjects and younger subjects, and other reported clinical experience has not identified differences in responses between the elderly and younger patients. However, greater sensitivity of some older individuals cannot be ruled out.

## **11 DESCRIPTION**

DIPROLENE (augmented betamethasone dipropionate) Ointment, 0.05% contains betamethasone dipropionate USP, a synthetic adrenocorticosteroid, for topical use. Betamethasone, an analog of prednisolone, has a high degree of corticosteroid activity and a slight degree of mineralocorticoid activity. Betamethasone dipropionate is the 17, 21-dipropionate ester of betamethasone.

Chemically, betamethasone dipropionate is 9-fluoro-11 $\beta$ , 17,21-trihydroxy-16 $\beta$  - methylpregna-1,4-diene-3,20-dione 17,21-dipropionate, with the empirical formula  $C_{28}H_{37}FO_7$ , a molecular weight of 504.6 and the following structural formula:



It is a white to creamy-white, odorless powder insoluble in water; freely soluble in acetone and in chloroform; sparingly soluble in alcohol.

Each gram of DIPROLENE Ointment, 0.05% contains 0.643 mg betamethasone dipropionate USP (equivalent to 0.5 mg betamethasone), in a white ointment base of propylene glycol; propylene glycol stearate; white petrolatum; and white wax.

## 12 CLINICAL PHARMACOLOGY

### 12.1 Mechanism of Action

Corticosteroids play a role in cellular signaling, immune function, inflammation, and protein regulation; however, the precise mechanism of action of DIPROLENE Ointment in corticosteroid responsive dermatoses is unknown.

### 12.2 Pharmacodynamics

#### Vasoconstrictor Assay

Trials performed with DIPROLENE Ointment, 0.05% indicate that it is in the super-high range of potency as demonstrated in vasoconstrictor trials in healthy subjects when compared with other topical corticosteroids. However, similar blanching scores do not necessarily imply therapeutic equivalence.

### 12.3 Pharmacokinetics

No pharmacokinetics trials have been conducted with DIPROLENE Ointment.

The extent of percutaneous absorption of topical corticosteroids is determined by many factors including the vehicle, the integrity of the epidermal barrier, and the use of occlusive dressings.

Topical corticosteroids can be absorbed through normal intact skin. Inflammation and/or other disease processes in the skin may increase percutaneous absorption. Occlusive dressings substantially increase the percutaneous absorption of topical corticosteroids [see *Dosage and Administration* (2)].

Once absorbed through the skin, topical corticosteroids enter pharmacokinetic pathways similar to systemically administered corticosteroids. Corticosteroids are bound to plasma proteins in varying degrees, are metabolized primarily in the liver, and excreted by the kidneys. Some of the topical corticosteroids and their metabolites are also excreted into the bile.

## **13 NONCLINICAL TOXICOLOGY**

### **13.1 Carcinogenesis, Mutagenesis, Impairment of Fertility**

Long-term animal studies have not been performed to evaluate the carcinogenic potential of betamethasone dipropionate.

Betamethasone was negative in the bacterial mutagenicity assay (*Salmonella typhimurium* and *Escherichia coli*), and in the mammalian cell mutagenicity assay (CHO/HGPRT). It was positive in the *in vitro* human lymphocyte chromosome aberration assay, and equivocal in the *in vivo* mouse bone marrow micronucleus assay.

Studies in rabbits, mice, and rats using intramuscular doses up to 1, 33, and 2 mg/kg, respectively, resulted in dose-related increases in fetal resorptions in rabbits and mice.

## **14 CLINICAL STUDIES**

The safety and efficacy of DIPROLENE Ointment for the treatment of corticosteroid-responsive dermatoses, psoriasis and atopic dermatitis, have been evaluated in three randomized active-controlled trials, two in psoriasis and one in atopic dermatitis. A total of 378 subjects, of whom 152 received DIPROLENE Ointment, were included in these trials. These trials evaluated DIPROLENE Ointment applied twice daily, for 14 days. DIPROLENE Ointment was shown to be effective in relieving signs and symptoms of psoriasis and atopic dermatitis.

## **16 HOW SUPPLIED/STORAGE AND HANDLING**

DIPROLENE Ointment 0.05% is a white ointment supplied in 15-g (NDC 78206-124-01) and 50-g (NDC 78206-124-02) tubes.

Store at 25°C (77°F); excursions permitted to 15-30°C (59-86°F) [see USP Controlled Room Temperature].

## **17 PATIENT COUNSELING INFORMATION**

Advise the patient to read the FDA-approved patient labeling (Patient Information).

Inform patients of the following:

- Discontinue therapy when control is achieved, unless directed otherwise by the physician.
- Use no more than 50 grams per week of DIPROLENE Ointment and no longer than 2 consecutive weeks.
- Avoid contact with the eyes.
- Advise patients to report any visual symptoms to their healthcare providers.
- Avoid use of DIPROLENE Ointment on the face, underarms, or groin areas unless directed by the physician.
- Do not occlude the treatment area with bandage or other covering, unless directed by the physician.
- Note that local reactions and skin atrophy are more likely to occur with occlusive use, prolonged use or use of higher potency corticosteroids.



- Advise a woman to use DIPROLENE Ointment on the smallest area of skin and for the shortest duration possible while pregnant or breastfeeding. Advise breastfeeding women not to apply DIPROLENE Ointment directly to the nipple and areola to avoid direct infant exposure.

Distributed by: Organon LLC, a subsidiary of  
ORGANON & Co.,  
Jersey City, NJ 07302, USA

For patent information: [www.organon.com/our-solutions/patent/](http://www.organon.com/our-solutions/patent/)

© 2022 Organon group of companies. All rights reserved.

uspi-og1460-ot-2202r001

**Patient Information**  
**DIPROLENE® (DIH-pro-leen)**  
**(augmented betamethasone dipropionate) Ointment**

**Important information: DIPROLENE Ointment is for use on skin only.** Do not use DIPROLENE Ointment in your eyes, mouth, or vagina.

**What is DIPROLENE Ointment?**

DIPROLENE Ointment is a prescription corticosteroid medicine used on the skin (topical) for the relief of redness, swelling, heat, pain (inflammation) and itching, caused by certain skin problems in people 13 years of age and older.

- DIPROLENE Ointment should not be used in children under 13 years of age.

**Do not use DIPROLENE Ointment if you** are allergic to betamethasone dipropionate or any of the ingredients in DIPROLENE Ointment. See the end of this leaflet for a complete list of ingredients in DIPROLENE Ointment.

**Before using DIPROLENE Ointment, tell your healthcare provider about all of your medical conditions, including if you:**

- have had irritation or other skin reaction to a steroid medicine in the past.
- have thinning of the skin (atrophy) at the treatment site.
- have diabetes.
- have adrenal gland problems.
- have liver problems.
- have cataracts or glaucoma.
- are pregnant or plan to become pregnant. It is not known if DIPROLENE Ointment will harm your unborn baby. If you use DIPROLENE Ointment during pregnancy, use DIPROLENE Ointment on the smallest area of the skin and for the shortest time needed.
- are breastfeeding or plan to breastfeed. It is not known if DIPROLENE Ointment passes into your breast milk. Breastfeeding women should use DIPROLENE Ointment on the smallest area of skin and for the shortest time needed while breastfeeding. Do not apply DIPROLENE Ointment directly to the nipple and areola to avoid contact with your baby.

**Tell your healthcare provider about all the medicines you take,** including prescription and over-the-counter medicines, vitamins, and herbal supplements.

**Especially** tell your healthcare provider if you take other corticosteroid medicines by

mouth or injection or use other products on your skin or scalp that contain corticosteroids.

Do not use other products containing a steroid medicine with DIPROLENE Ointment without talking to your healthcare provider first.

### **How should I use DIPROLENE Ointment?**

- Use DIPROLENE Ointment exactly as your healthcare provider tells you to use it.
- Apply a thin layer (film) of DIPROLENE Ointment to the affected skin area 1 or 2 times each day. Do not use more than 50 grams of DIPROLENE Ointment in 1 week.
- Do not use DIPROLENE Ointment for longer than 2 weeks in a row unless your healthcare provider tells you to.
- Tell your healthcare provider if the treated skin area does not get better after 2 weeks of treatment with DIPROLENE Ointment.
- Do not bandage, cover, or wrap the treated skin area unless your healthcare provider tells you to.
- DIPROLENE Ointment should not be used to treat diaper rash or redness.
- Avoid using DIPROLENE Ointment on the face, groin, or underarms (armpits) or if thinning of the skin (atrophy) is present at the treatment site.
- Wash your hands after applying DIPROLENE Ointment unless you are using the medicine to treat your hands.

### **What are the possible side effects of DIPROLENE Ointment?**

#### **DIPROLENE Ointment may cause serious side effects, including:**

- **DIPROLENE Ointment can pass through your skin.** Too much DIPROLENE Ointment passing through your skin can cause your adrenal glands to stop working properly. Your healthcare provider may do blood tests to check for adrenal gland problems.
- **Cushing's syndrome**, a condition that happens when your body is exposed to too much of the hormone cortisol.
- **High blood sugar** (hyperglycemia).
- **Effects on growth and weight in children.**
- **Vision problems.** Topical corticosteroids including DIPROLENE Ointment may increase your chance of developing cataract(s) and glaucoma. Tell your healthcare provider if you develop blurred vision or other vision problems during treatment with DIPROLENE Ointment.
- **Skin problems.** **Skin problems** including, allergic reactions (contact dermatitis) may happen during treatment with DIPROLENE Ointment. Stop using DIPROLENE Ointment and tell your healthcare provider if you develop any skin reactions or have problems with healing during treatment with DIPROLENE Ointment.

Your healthcare provider may do certain blood tests to check for side effects.

**The most common side effects of DIPROLENE Ointment include** redness of the skin, inflamed hair follicles, itching and blistering.

These are not all of the possible side effects of DIPROLENE Ointment.

Call your doctor for medical advice about side effects. You may report side effects to FDA at 1-800-FDA-1088.

### **How should I store DIPROLENE Ointment?**

- Store DIPROLENE Ointment at room temperature between 68°F to 77°F (20°C to 25°C).
- **Keep DIPROLENE Ointment and all medicines out of the reach of children.**

**General information about the safe and effective use of DIPROLENE Ointment.**

Medicines are sometimes prescribed for purposes other than those listed in a Patient Information leaflet. Do not use DIPROLENE Ointment for a condition for which it was not prescribed. Do not give DIPROLENE Ointment to other people, even if they have the same symptoms that you have. It may harm them. You can ask your pharmacist or healthcare provider for information about DIPROLENE Ointment that is written for health professionals.

**What are the ingredients in DIPROLENE Ointment?**

**Active ingredient:** augmented betamethasone dipropionate

**Inactive ingredients:** propylene glycol; propylene glycol stearate; white petrolatum; and white wax.

Distributed by: Organon LLC, a subsidiary of  
ORGANON & Co.,  
Jersey City, NJ 07302, USA

© 2022 Organon group of companies. All rights reserved.

usppi-og1460-ot-2202r001

For patent information: [www.organon.com/our-solutions/patent/](http://www.organon.com/our-solutions/patent/)

This Patient Information has been approved by the U.S. Food and Drug Administration.

Revised: 2/2022

**PRINCIPAL DISPLAY PANEL - 15 g Tube Box**

NDC 78206-124-01

**15 g**

***Diprolene***<sup>®</sup>

(augmented  
betamethasone  
dipropionate)

**Ointment, 0.05%\***

\*Strength expressed  
as betamethasone

**For topical  
use only.**

Not for oral,  
ophthalmic, or  
intravaginal use.

**Rx only**

Encoding area: Space reserved for  
Serial Number and 2D Serialization Barcode

2107219028200 NI19  
GTIN 00378206124012

**Usual Dosage:** Apply a thin film of ointment to the affected skin once or twice daily without occlusion. Treatment with DIPROLENE Ointment should be limited to 50 g per week. See Prescribing Information.

**Each gram contains:** 0.643 mg betamethasone dipropionate USP (equivalent to 0.5 mg betamethasone), in a white ointment base of propylene glycol; propylene glycol stearate; white petrolatum and white wax.

**Store at 25°C (77°F); excursions permitted to 15-30°C (59-86°F) [see USP Controlled Room Temperature].**

Manuf. for:  
Organon LLC,  
a subsidiary of  
**ORGANON & Co.,**  
Jersey City, NJ 07302, USA

Manuf. by:  
Delpharm Montréal Inc.  
Pointe-Claire, QC H9R 1B4,  
Canada

Betamethasone Dipropionate  
(active ingred.) Made in Singapore.  
Formulated in Canada.

© 2022 Organon group of companies.  
All rights reserved.

 **ORGANON**



70094078  
/180322  
-1



NDC 78206-124-01

**15 g**

***Diprolene***<sup>®</sup>  
(augmented  
betamethasone  
dipropionate)  
**Ointment, 0.05%\***

\*Strength expressed  
as betamethasone

**For topical  
use only.**  
Not for oral,  
ophthalmic, or  
intravaginal use.

**Rx only**



## DIPROLENE

betamethasone dipropionate ointment

### Product Information

<b>Product Type</b>	HUMAN PRESCRIPTION DRUG	<b>Item Code (Source)</b>	NDC:78206-124
<b>Route of Administration</b>	TOPICAL		

### Active Ingredient/Active Moiety

Ingredient Name	Basis of Strength	Strength
<b>BETAMETHASONE DIPROPIONATE</b> (UNII: 826Y60901U) (BETAMETHASONE - UNII:9842X06Q6M)	BETAMETHASONE	0.5 mg in 1 g

### Inactive Ingredients

Ingredient Name	Strength
<b>PROPYLENE GLYCOL</b> (UNII: 6DC9Q167V3)	
<b>PROPYLENE GLYCOL MONOPALMITOSTEARATE</b> (UNII: F76354LMGR)	
<b>WHITE WAX</b> (UNII: 7G1J5DA97F)	
<b>PETROLATUM</b> (UNII: 4T6H12BN9U)	

### Packaging

#	Item Code	Package Description	Marketing Start Date	Marketing End Date
1	NDC:78206-124-01	1 in 1 BOX	06/01/2021	
1		15 g in 1 TUBE; Type 0: Not a Combination Product		
2	NDC:78206-124-02	1 in 1 BOX	06/01/2021	
2		50 g in 1 TUBE; Type 0: Not a Combination Product		

### Marketing Information

Marketing Category	Application Number or Monograph Citation	Marketing Start Date	Marketing End Date
NDA	NDA018741	06/01/2021	

**Labeler** - Organon LLC (117494753)

