

LISINOPRIL AND HYDROCHLOROTHIAZIDE- lisinopril and hydrochlorothiazide tablet
NCS HealthCare of KY, Inc dba Vanguard Labs

Lisinopril and Hydrochlorothiazide

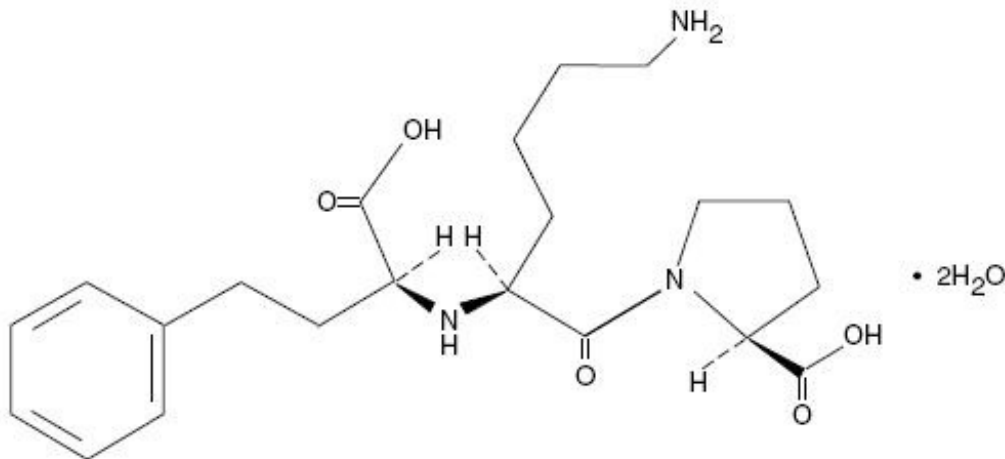
USE IN PREGNANCY

When used in pregnancy during the second and third trimesters, ACE inhibitors can cause injury and even death to the developing fetus. When pregnancy is detected, lisinopril and hydrochlorothiazide should be discontinued as soon as possible. (See **WARNINGS, Pregnancy, Lisinopril, *Fetal/Neonatal Morbidity and Mortality***).

DESCRIPTION

Lisinopril and hydrochlorothiazide USP combines an angiotensin converting enzyme inhibitor, lisinopril USP, and a diuretic, hydrochlorothiazide USP.

Lisinopril USP, a synthetic peptide derivative, is an oral long-acting angiotensin converting enzyme inhibitor. It is chemically described as (S)-1-[N²-(1-carboxy-3-phenylpropyl)-L-lysyl]-L-proline dihydrate and has the following structural formula:

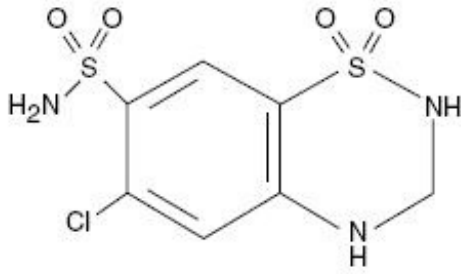


$C_{21}H_{31}N_3O_5 \cdot 2H_2O$ M.W. 441.53

Lisinopril USP is a white to off-white, crystalline powder. It is soluble in water, sparingly soluble in methanol, and practically insoluble in ethanol.

DESCRIPTION

Hydrochlorothiazide USP is 6-chloro-3,4-dihydro-2H -1,2,4-benzothiadiazine-7-sulfonamide 1,1-dioxide and has the following structural formula:



$C_7H_8ClN_3O_4S_2$ M.W. 297.72

Hydrochlorothiazide USP is a white, or practically white, crystalline powder which is slightly soluble in water, but freely soluble in sodium hydroxide solution.

Lisinopril and Hydrochlorothiazide Tablets USP, for oral administration, are available in three tablet combinations of lisinopril with hydrochlorothiazide: lisinopril and hydrochlorothiazide 10/12.5 mg, containing 10 mg lisinopril USP and 12.5 mg hydrochlorothiazide USP; lisinopril and hydrochlorothiazide 20/12.5 mg, containing 20 mg lisinopril USP and 12.5 mg hydrochlorothiazide USP and lisinopril and hydrochlorothiazide 20/25 mg, containing 20 mg lisinopril USP and 25 mg hydrochlorothiazide USP. In addition, each lisinopril and hydrochlorothiazide tablet USP contains the following inactive ingredients: dibasic calcium phosphate anhydrous, magnesium stearate, mannitol, pregelatinized starch and talc. The 10/12.5 mg also contains FD&C blue #1 aluminum lake HT; the 20/12.5 mg also contains synthetic red iron oxide and synthetic yellow iron oxide and the 20/25 mg also contains FD&C yellow #6 aluminum lake.

CLINICAL PHARMACOLOGY

Lisinopril and Hydrochlorothiazide

As a result of its diuretic effects, hydrochlorothiazide increases plasma renin activity, increases aldosterone secretion, and decreases serum potassium. Administration of lisinopril blocks the renin-angiotensin-aldosterone axis and tends to reverse the potassium loss associated with the diuretic.

In clinical studies, the extent of blood pressure reduction seen with the combination of lisinopril and hydrochlorothiazide was approximately additive. The lisinopril and hydrochlorothiazide 10/12.5 mg combination worked equally well in Black and Caucasian patients. The lisinopril and hydrochlorothiazide 20/12.5 mg and lisinopril and hydrochlorothiazide 20/25 mg combinations appeared somewhat less effective in Black patients, but relatively few Black patients were studied. In most patients, the antihypertensive effect of lisinopril and hydrochlorothiazide was sustained for at least 24 hours.

In a randomized, controlled comparison, the mean antihypertensive effects of lisinopril and hydrochlorothiazide 20/12.5 mg and lisinopril and hydrochlorothiazide 20/25 mg were similar, suggesting that many patients who respond adequately to the latter combination may be controlled with lisinopril and hydrochlorothiazide 20/12.5 mg (see **DOSAGE AND ADMINISTRATION**).

Concomitant administration of lisinopril and hydrochlorothiazide has little or no effect on the bioavailability of either drug. The combination tablet is bioequivalent to concomitant administration of the separate entities.

Lisinopril

Mechanism of Action

Lisinopril inhibits angiotensin-converting enzyme (ACE) in human subjects and animals. ACE is a peptidyl dipeptidase that catalyzes the conversion of angiotensin I to the vasoconstrictor substance,

angiotensin II. Angiotensin II also stimulates aldosterone secretion by the adrenal cortex. Inhibition of ACE results in decreased plasma angiotensin II which leads to decreased vasopressor activity and to decreased aldosterone secretion. The latter decrease may result in a small increase of serum potassium. Removal of angiotensin II negative feedback on renin secretion leads to increased plasma renin activity. In hypertensive patients with normal renal function treated with lisinopril alone for up to 24 weeks, the mean increase in serum potassium was less than 0.1 mEq/L; however, approximately 15 percent of patients had increases greater than 0.5 mEq/L and approximately six percent had a decrease greater than 0.5 mEq/L. In the same study, patients treated with lisinopril plus a thiazide diuretic showed essentially no change in serum potassium (see **PRECAUTIONS**).

ACE is identical to kininase, an enzyme that degrades bradykinin. Whether increased levels of bradykinin, a potent vasodepressor peptide, play a role in the therapeutic effects of lisinopril remains to be elucidated.

While the mechanism through which lisinopril lowers blood pressure is believed to be primarily suppression of the renin-angiotensin-aldosterone system, lisinopril is antihypertensive even in patients with low-renin hypertension. Although lisinopril was antihypertensive in all races studied, Black hypertensive patients (usually a low-renin hypertensive population) had a smaller average response to lisinopril monotherapy than non-Black patients.

Pharmacokinetics and Metabolism

Following oral administration of lisinopril, peak serum concentrations occur within about 7 hours. Declining serum concentrations exhibit a prolonged terminal phase which does not contribute to drug accumulation. This terminal phase probably represents saturable binding to ACE and is not proportional to dose. Lisinopril does not appear to be bound to other serum proteins.

Lisinopril does not undergo metabolism and is excreted unchanged entirely in the urine. Based on urinary recovery, the mean extent of absorption of lisinopril is approximately 25 percent, with large intersubject variability (6 to 60 percent) at all doses tested (5 to 80 mg). Lisinopril absorption is not influenced by the presence of food in the gastrointestinal tract.

Upon multiple dosing, lisinopril exhibits an effective half-life of accumulation of 12 hours.

Impaired renal function decreases elimination of lisinopril, which is excreted principally through the kidneys, but this decrease becomes clinically important only when the glomerular filtration rate is below 30 mL/min. Above this glomerular filtration rate, the elimination half-life is little changed. With greater impairment, however, peak and trough lisinopril levels increase, time to peak concentration increases and time to attain steady state is prolonged. Older patients, on average, have (approximately doubled) higher blood levels and area under the plasma concentration time curve (AUC) than younger patients (see **DOSAGE AND ADMINISTRATION**). In a multiple dose pharmacokinetic study in elderly versus young hypertensive patients using the lisinopril/hydrochlorothiazide combination, the AUC increased approximately 120% for lisinopril and approximately 80% for hydrochlorothiazide in older patients. Lisinopril can be removed by hemodialysis.

Studies in rats indicate that lisinopril crosses the blood-brain barrier poorly. Multiple doses of lisinopril in rats do not result in accumulation in any tissues. However, milk of lactating rats contains radioactivity following administration of ¹⁴C lisinopril. By whole body autoradiography, radioactivity was found in the placenta following administration of labeled drug to pregnant rats, but none was found in the fetuses.

Pharmacodynamics

Administration of lisinopril to patients with hypertension results in a reduction of supine and standing blood pressure to about the same extent with no compensatory tachycardia. Symptomatic postural hypotension is usually not observed, although it can occur and should be anticipated in volume and/or salt-depleted patients (see **WARNINGS**).

In most patients studied, onset of antihypertensive activity was seen at one hour after oral administration of an individual dose of lisinopril, with peak reduction of blood pressure achieved by six hours.

In some patients, achievement of optimal blood pressure reduction may require two to four weeks of therapy.

At recommended single daily doses, antihypertensive effects have been maintained for at least 24 hours after dosing, although the effect at 24 hours was substantially smaller than the effect six hours after dosing.

The antihypertensive effects of lisinopril have continued during long-term therapy. Abrupt withdrawal of lisinopril has not been associated with a rapid increase in blood pressure; nor with a significant overshoot of pretreatment blood pressure.

In hemodynamic studies in patients with essential hypertension, blood pressure reduction was accompanied by a reduction in peripheral arterial resistance with little or no change in cardiac output and in heart rate. In a study in nine hypertensive patients, following administration of lisinopril, there was an increase in mean renal blood flow that was not significant. Data from several small studies are inconsistent with respect to the effect of lisinopril on glomerular filtration rate in hypertensive patients with normal renal function, but suggest that changes, if any, are not large.

In patients with renovascular hypertension, lisinopril has been shown to be well tolerated and effective in controlling blood pressure (see **PRECAUTIONS**).

Hydrochlorothiazide

The mechanism of the antihypertensive effect of thiazides is unknown. Thiazides do not usually affect normal blood pressure.

Hydrochlorothiazide is a diuretic and antihypertensive. It affects the distal renal tubular mechanism of electrolyte reabsorption. Hydrochlorothiazide increases excretion of sodium and chloride in approximately equivalent amounts. Natriuresis may be accompanied by some loss of potassium and bicarbonate.

After oral use, diuresis begins within two hours, peaks in about four hours and lasts about 6 to 12 hours.

Hydrochlorothiazide is not metabolized but is eliminated rapidly by the kidney. When plasma levels have been followed for at least 24 hours, the plasma half-life has been observed to vary between 5.6 and 14.8 hours. At least 61 percent of the oral dose is eliminated unchanged within 24 hours. Hydrochlorothiazide crosses the placental but not the blood-brain barrier.

INDICATIONS AND USAGE

Lisinopril and Hydrochlorothiazide Tablets USP are indicated for the treatment of hypertension.

These fixed-dose combinations are not indicated for initial therapy (see **DOSAGE AND ADMINISTRATION**).

In using lisinopril and hydrochlorothiazide, consideration should be given to the fact that an angiotensin-converting enzyme inhibitor, captopril, has caused agranulocytosis, particularly in patients with renal impairment or collagen vascular disease, and that available data are insufficient to show that lisinopril does not have a similar risk (see **WARNINGS**).

In considering use of lisinopril and hydrochlorothiazide, it should be noted that ACE inhibitors have been associated with a higher rate of angioedema in black than in nonblack patients (see **WARNINGS, Lisinopril**).

CONTRAINDICATIONS

Lisinopril and hydrochlorothiazide is contraindicated in patients who are hypersensitive to this product and in patients with a history of angioedema related to previous treatment with an angiotensin converting enzyme inhibitor and in patients with hereditary or idiopathic angioedema. Because of the hydrochlorothiazide component, this product is contraindicated in patients with anuria or hypersensitivity to other sulfonamide-derived drugs.

WARNINGS

Lisinopril

Anaphylactoid and Possibly Related Reactions

Presumably because angiotensin-converting enzyme inhibitors affect the metabolism of eicosanoids and polypeptides, including endogenous bradykinin, patients receiving ACE inhibitors (including lisinopril and hydrochlorothiazide) may be subject to a variety of adverse reactions, some of them serious.

Head and Neck Angioedema

Angioedema of the face, extremities, lips, tongue, glottis and/or larynx has been reported in patients treated with angiotensin converting enzyme inhibitors, including lisinopril. This may occur at any time during treatment. ACE inhibitors have been associated with a higher rate of angioedema in Black than in non-Black patients. Lisinopril and hydrochlorothiazide should be promptly discontinued and appropriate therapy and monitoring should be provided until complete and sustained resolution of signs and symptoms has occurred. Even in those instances where swelling of only the tongue is involved, without respiratory distress, patients may require prolonged observation since treatment with antihistamines and corticosteroids may not be sufficient. Very rarely, fatalities have been reported due to angioedema associated with laryngeal edema or tongue edema. Patients with involvement of the tongue, glottis or larynx are likely to experience airway obstruction, especially those with a history of airway surgery. **Where there is involvement of the tongue, glottis or larynx, likely to cause airway obstruction, subcutaneous epinephrine solution 1:1000 (0.3mL to 0.5 mL) and/or measures necessary to ensure a patent airway, should be promptly provided (see ADVERSE REACTIONS).**

Intestinal Angioedema

Intestinal angioedema has been reported in patients treated with ACE inhibitors. These patients presented with abdominal pain (with or without nausea or vomiting); in some cases there was no prior history of facial angioedema and C-1 esterase levels were normal. The angioedema was diagnosed by procedures including abdominal CT scan or ultrasound, or at surgery, and symptoms resolved after stopping the ACE inhibitor. Intestinal angioedema should be included in the differential diagnosis of patients on ACE inhibitors presenting with abdominal pain.

Patients with a history of angioedema unrelated to ACE-inhibitor therapy may be at increased risk of angioedema while receiving an ACE inhibitor (see also **INDICATIONS AND USAGE** and **CONTRAINDICATIONS**).

Anaphylactoid Reactions During Desensitization

Two patients undergoing desensitizing treatment with hymenoptera venom while receiving ACE inhibitors sustained life-threatening anaphylactoid reactions. In the same patients, these reactions were avoided when ACE inhibitors were temporarily withheld, but they reappeared upon inadvertent rechallenge.

Anaphylactoid Reactions During Membrane Exposure

Thiazide-containing combination products are not recommended in patients with severe renal dysfunction. Sudden and potentially life-threatening anaphylactoid reactions have been reported in some patients dialyzed with high-flux membranes (e.g., AN69®*) and treated concomitantly with an ACE

inhibitor. In such patients, dialysis must be stopped immediately, and aggressive therapy for anaphylactoid reactions must be initiated. Symptoms have not been relieved by antihistamines in these situations. In these patients, consideration should be given to using a different type of dialysis membrane or a different class of antihypertensive agent. Anaphylactoid reactions have also been reported in patients undergoing low-density lipoprotein apheresis with dextran sulfate absorption.

Hypotension and Related Effects

Excessive hypotension was rarely seen in uncomplicated hypertensive patients but is a possible consequence of lisinopril use in salt/volume-depleted persons, such as those treated vigorously with diuretics or patients on dialysis (see **PRECAUTIONS, Drug Interactions** and **ADVERSE REACTIONS**).

Syncope has been reported in 0.8% of patients receiving lisinopril and hydrochlorothiazide. In patients with hypertension receiving lisinopril alone, the incidence of syncope was 0.1%. The overall incidence of syncope may be reduced by proper titration of the individual components (see **PRECAUTIONS, Drug Interactions, ADVERSE REACTIONS** and **DOSAGE AND ADMINISTRATION**).

In patients with severe congestive heart failure, with or without associated renal insufficiency, excessive hypotension has been observed and may be associated with oliguria and/or progressive azotemia, and rarely with acute renal failure and/or death. Because of the potential fall in blood pressure in these patients, therapy should be started under very close medical supervision. Such patients should be followed closely for the first two weeks of treatment and whenever the dose of lisinopril and/or diuretic is increased. Similar considerations apply to patients with ischemic heart or cerebrovascular disease in whom an excessive fall in blood pressure could result in a myocardial infarction or cerebrovascular accident.

If hypotension occurs, the patient should be placed in the supine position and, if necessary, receive an intravenous infusion of normal saline. A transient hypotensive response is not a contraindication to further doses which usually can be given without difficulty once the blood pressure has increased after volume expansion.

Leukopenia/Neutropenia/Agranulocytosis

Another angiotensin converting enzyme inhibitor, captopril, has been shown to cause agranulocytosis and bone marrow depression, rarely in uncomplicated patients but more frequently in patients with renal impairment, especially if they also have a collagen vascular disease. Available data from clinical trials of lisinopril are insufficient to show that lisinopril does not cause agranulocytosis at similar rates. Marketing experience has revealed rare cases of leukopenia/neutropenia and bone marrow depression in which a causal relationship to lisinopril cannot be excluded. Periodic monitoring of white blood cell counts in patients with collagen vascular disease and renal disease should be considered.

Hepatic Failure

Rarely, ACE inhibitors have been associated with a syndrome that starts with cholestatic jaundice or hepatitis and progresses to fulminant hepatic necrosis, and (sometimes) death. The mechanism of this syndrome is not understood. Patients receiving ACE inhibitors who develop jaundice or marked elevations of hepatic enzymes should discontinue the ACE inhibitor and receive appropriate medical follow-up.

Pregnancy

Lisinopril and Hydrochlorothiazide

Teratogenicity studies were conducted in mice and rats with up to 90 mg/kg/day of lisinopril (56 times the maximum recommended human dose) in combination with 10 mg/kg/day of hydrochlorothiazide (2.5 times the maximum recommended human dose). Maternal or fetotoxic effects were not seen in mice with the combination. In rats decreased maternal weight gain and decreased fetal weight occurred down to

3/10 mg/kg/day (the lowest dose tested). Associated with the decreased fetal weight was a delay in fetal ossification. The decreased fetal weight and delay in fetal ossification were not seen in saline-supplemented animals given 90/10 mg/kg/day.

When used in pregnancy during the second and third trimesters, ACE inhibitors can cause injury and even death to the developing fetus. When pregnancy is detected, lisinopril and hydrochlorothiazide should be discontinued as soon as possible (see *Lisinopril, Fetal/Neonatal Morbidity and Mortality*, below).

Lisinopril

Fetal/Neonatal Morbidity and Mortality

ACE inhibitors can cause fetal and neonatal morbidity and death when administered to pregnant women. Several dozen cases have been reported in the world literature. When pregnancy is detected, ACE inhibitor therapy should be discontinued as soon as possible.

In a published retrospective epidemiological study, infants whose mothers had taken an ACE inhibitor drug during the first trimester of pregnancy appeared to have an increased risk of major congenital malformations compared with infants whose mothers had not undergone first trimester exposure to ACE inhibitor drugs. The number of cases of birth defects is small and the findings of this study have not yet been repeated.

The use of ACE inhibitors during the second and third trimesters of pregnancy has been associated with fetal and neonatal injury, including hypotension, neonatal skull hypoplasia, anuria, reversible or irreversible renal failure, and death. Oligohydramnios has also been reported, presumably resulting from decreased fetal renal function; oligohydramnios in this setting has been associated with fetal limb contractures, craniofacial deformation, and hypoplastic lung development. Prematurity, intrauterine growth retardation, and patent ductus arteriosus have also been reported, although it is not clear whether these occurrences were due to the ACE-inhibitor exposure.

These adverse effects do not appear to have resulted from intrauterine ACE-inhibitor exposure that has been limited to the first trimester. Mothers whose embryos and fetuses are exposed to ACE inhibitors only during the first trimester should be so informed. Nonetheless, when patients become pregnant, physicians should make every effort to discontinue the use of lisinopril and hydrochlorothiazide as soon as possible.

Rarely (probably less often than once in every thousand pregnancies), no alternative to ACE inhibitors will be found. In these rare cases, the mothers should be apprised of the potential hazards to their fetuses, and serial ultrasound examinations should be performed to assess the intraamniotic environment.

If oligohydramnios is observed, lisinopril and hydrochlorothiazide should be discontinued unless it is considered lifesaving for the mother. Contraction stress testing (CST), a non-stress test (NST), or biophysical profiling (BPP) may be appropriate, depending upon the week of pregnancy. Patients and physicians should be aware, however, that oligohydramnios may not appear until after the fetus has sustained irreversible injury.

Infants with histories of *in utero* exposure to ACE inhibitors should be closely observed for hypotension, oliguria, and hyperkalemia. If oliguria occurs, attention should be directed toward support of blood pressure and renal perfusion. Exchange transfusion or dialysis may be required as means of reversing hypotension and/or substituting for disordered renal function. Lisinopril, which crosses the placenta, has been removed from neonatal circulation by peritoneal dialysis with some clinical benefit, and theoretically may be removed by exchange transfusion, although there is no experience with the latter procedure.

No teratogenic effects of lisinopril were seen in studies of pregnant mice, rats, and rabbits. On a mg/kg basis, the doses used were up to 625 times (in mice), 188 times (in rats), and 0.6 times (in rabbits) the maximum recommended human dose.

Hydrochlorothiazide

Acute Myopia and Secondary Angle-Closure Glaucoma

Hydrochlorothiazide, a sulfonamide, can cause an idiosyncratic reactions, resulting in acute transient myopia and acute angle-closure glaucoma. Symptoms include acute onset of decreased vision; acuity or ocular pain and typically occur within hours to weeks of drug initiation. Untreated acute angle-closure glaucoma can lead to permanent vision loss. The primary treatments may need to be considered if the intraocular pressure remains uncontrolled. Risk factors for developing acute angle-closure glaucoma may include a history of sulfonamide or penicillin allergy.

Teratogenic Effects

Reproduction studies in the rabbit, the mouse and the rat at doses up to 100 mg/kg/day (50 times the human dose) showed no evidence of external abnormalities of the fetus due to hydrochlorothiazide. Hydrochlorothiazide given in a two-litter study in rats at doses of 4 to 5.6 mg/kg/day (approximately 1 to 2 times the usual daily human dose) did not impair fertility or produce birth abnormalities in the offspring. Thiazides cross the placental barrier and appear in cord blood.

Nonteratogenic Effects

These may include fetal or neonatal jaundice, thrombocytopenia, and possibly other adverse reactions have occurred in the adult.

Hydrochlorothiazide

Thiazides should be used with caution in severe renal disease. In patients with renal disease, thiazides may precipitate azotemia. Cumulative effects of the drug may develop in patients with impaired renal function.

Thiazides should be used with caution in patients with impaired hepatic function or progressive liver disease, since minor alterations of fluid and electrolyte balance may precipitate hepatic coma.

Sensitivity reactions may occur in patients with or without a history of allergy or bronchial asthma.

The possibility of exacerbation or activation of systemic lupus erythematosus has been reported.

Lithium generally should not be given with thiazides (see **PRECAUTIONS, Drug Interactions, Lisinopril** and **Hydrochlorothiazide**).

PRECAUTIONS

General

Lisinopril

Aortic Stenosis/Hypertrophic Cardiomyopathy

As with all vasodilators, lisinopril should be given with caution to patients with obstruction in the outflow tract of the left ventricle.

Impaired Renal Function

As a consequence of inhibiting the renin-angiotensin-aldosterone system, changes in renal function may be anticipated in susceptible individuals. In patients with severe congestive heart failure whose renal function may depend on the activity of the renin-angiotensin-aldosterone system, treatment with angiotensin converting enzyme inhibitors, including lisinopril, may be associated with oliguria and/or progressive azotemia and rarely with acute renal failure and/or death.

In hypertensive patients with unilateral or bilateral renal artery stenosis, increases in blood urea nitrogen and serum creatinine may occur. Experience with another angiotensin converting enzyme inhibitor suggests that these increases are usually reversible upon discontinuation of lisinopril and/or diuretic therapy. In such patients renal function should be monitored during the first few weeks of therapy.

Some hypertensive patients with no apparent pre-existing renal vascular disease have developed increases in blood urea and serum creatinine, usually minor and transient, especially when lisinopril has been given concomitantly with a diuretic. This is more likely to occur in patients with pre-existing renal impairment. Dosage reduction of lisinopril and/or discontinuation of the diuretic may be required.

Evaluation of the hypertensive patient should always include assessment of renal function (see DOSAGE AND ADMINISTRATION).

Hyperkalemia

In clinical trials hyperkalemia (serum potassium greater than 5.7 mEq/L) occurred in approximately 1.4 percent of hypertensive patients treated with lisinopril plus hydrochlorothiazide. In most cases these were isolated values which resolved despite continued therapy. Hyperkalemia was not a cause of discontinuation of therapy. Risk factors for the development of hyperkalemia include renal insufficiency, diabetes mellitus, and the concomitant use of potassium-sparing diuretics, potassium supplements and/or potassium-containing salt substitutes. Hyperkalemia can cause serious, sometimes fatal, arrhythmias. Lisinopril and hydrochlorothiazide should be used cautiously, if at all, with these agents and with frequent monitoring of serum potassium (see **PRECAUTIONS, Drug Interactions**).

Cough

Presumably due to the inhibition of the degradation of endogenous bradykinin, persistent nonproductive cough has been reported with all ACE inhibitors, almost always resolving after discontinuation of therapy. ACE inhibitor-induced cough should be considered in the differential diagnosis of cough.

Surgery/Anesthesia

In patients undergoing major surgery or during anesthesia with agents that produce hypotension, lisinopril may block angiotensin II formation secondary to compensatory renin release. If hypotension occurs and is considered to be due to this mechanism, it can be corrected by volume expansion.

Hydrochlorothiazide

Periodic determination of serum electrolytes to detect possible electrolyte imbalance should be performed at appropriate intervals.

All patients receiving thiazide therapy should be observed for clinical signs of fluid or electrolyte imbalance: namely, hyponatremia, hypochloremic alkalosis, and hypokalemia. Serum and urine electrolyte determinations are particularly important when the patient is vomiting excessively or receiving parenteral fluids. Warning signs or symptoms of fluid and electrolyte imbalance, irrespective of cause, include dryness of mouth, thirst, weakness, lethargy, drowsiness, restlessness, confusion, seizures, muscle pains or cramps, muscular fatigue, hypotension, oliguria, tachycardia, and gastrointestinal disturbances such as nausea and vomiting.

Hypokalemia may develop, especially with brisk diuresis, when severe cirrhosis is present, or after prolonged therapy.

Interference with adequate oral electrolyte intake will also contribute to hypokalemia. Hypokalemia may cause cardiac arrhythmia and may also sensitize or exaggerate the response of the heart to the toxic effects of digitalis (e.g., increased ventricular irritability). Because lisinopril reduces the production of aldosterone, concomitant therapy with lisinopril attenuates the diuretic-induced potassium loss (see **PRECAUTIONS, Drug Interactions, Agents Increasing Serum Potassium**).

Although any chloride deficit is generally mild and usually does not require specific treatment, except under extraordinary circumstances (as in liver disease or renal disease), chloride replacement may be required in the treatment of metabolic alkalosis.

Dilutional hyponatremia may occur in edematous patients in hot weather; appropriate therapy is water restriction, rather than administration of salt except in rare instances when the hyponatremia is life-threatening. In actual salt depletion, appropriate replacement is the therapy of choice.

Hyperuricemia may occur or frank gout may be precipitated in certain patients receiving thiazide therapy.

In diabetic patients, dosage adjustments of insulin or oral hypoglycemic agents may be required. Hyperglycemia may occur with thiazide diuretics. Thus, latent diabetes mellitus may become manifest during thiazide therapy.

The antihypertensive effects of the drug may be enhanced in the postsympathectomy patient.

If progressive renal impairment becomes evident, consider withholding or discontinuing diuretic therapy.

Thiazides have been shown to increase the urinary excretion of magnesium; this may result in hypomagnesemia.

Thiazides may decrease urinary calcium excretion. Thiazides may cause intermittent and slight elevation of serum calcium in the absence of known disorders of calcium metabolism. Marked hypercalcemia may be evidence of hidden hyperparathyroidism. Thiazides should be discontinued before carrying out tests for parathyroid function.

Increases in cholesterol and triglyceride levels may be associated with thiazide diuretic therapy.

Information for Patients

Angioedema

Angioedema, including laryngeal edema, may occur at any time during treatment with angiotensin converting enzyme inhibitors, including lisinopril and hydrochlorothiazide. Patients should be so advised and told to report immediately any signs or symptoms suggesting angioedema (swelling of face, extremities, eyes, lips, tongue, difficulty in swallowing or breathing) and to take no more drug until they have consulted with the prescribing physician.

Symptomatic Hypotension

Patients should be cautioned to report lightheadedness especially during the first few days of therapy. If actual syncope occurs, the patients should be told to discontinue the drug until they have consulted with the prescribing physician.

All patients should be cautioned that excessive perspiration and dehydration may lead to an excessive fall in blood pressure because of reduction in fluid volume. Other causes of volume depletion such as vomiting or diarrhea may also lead to a fall in blood pressure; patients should be advised to consult with their physician.

Hyperkalemia

Patients should be told not to use salt substitutes containing potassium without consulting their physician.

Leukopenia/Neutropenia

Patients should be told to report promptly any indication of infection (e.g., sore throat, fever) which may be a sign of leukopenia/neutropenia.

Pregnancy

Female patients of childbearing age should be told about the consequences of exposure to ACE inhibitors during pregnancy. These patients should be asked to report pregnancies to their physicians as soon as possible.

NOTE: As with many other drugs, certain advice to patients being treated with lisinopril and hydrochlorothiazide is warranted. This information is intended to aid in the safe and effective use of this medication. It is not a disclosure of all possible adverse or intended effects.

Drug Interactions

Lisinopril

Hypotension - Patients on Diuretic Therapy

Patients on diuretics, and especially those in whom diuretic therapy was recently instituted, may occasionally experience an excessive reduction of blood pressure after initiation of therapy with lisinopril. The possibility of hypotensive effects with lisinopril can be minimized by either discontinuing the diuretic or increasing the salt intake prior to initiation of treatment with lisinopril. If it is necessary to continue the diuretic, initiate therapy with lisinopril at a dose of 5 mg daily, and provide close medical supervision after the initial dose for at least two hours and until blood pressure has stabilized for at least an additional hour (see **WARNINGS** and **DOSAGE AND ADMINISTRATION**). When a diuretic is added to the therapy of a patient receiving lisinopril, an additional antihypertensive effect is usually observed (see **DOSAGE AND ADMINISTRATION**).

Non-steroidal Anti-inflammatory Agents Including Selective Cyclooxygenase-2 Inhibitors (COX-2 Inhibitors)

In patients who are elderly, volume-depleted (including those on diuretic therapy), or with compromised renal function, coadministration of NSAIDs, including selective COX-2 inhibitors, with ACE inhibitors, including lisinopril, may result in deterioration of renal function, including possible acute renal failure. These effects are usually reversible. Monitor renal function periodically in patients receiving lisinopril and NSAID therapy.

The antihypertensive effect of ACE inhibitors, including lisinopril, may be attenuated by NSAIDs.

Other Agents

Lisinopril has been used concomitantly with nitrates and/or digoxin without evidence of clinically significant adverse interactions. No meaningful clinically important pharmacokinetic interactions occurred when lisinopril was used concomitantly with propranolol, digoxin, or hydrochlorothiazide. The presence of food in the stomach does not alter the bioavailability of lisinopril.

Agents Increasing Serum Potassium

Lisinopril attenuates potassium loss caused by thiazide-type diuretics. Use of lisinopril with potassium-sparing diuretics (e.g., spironolactone, eplerenone, triamterene, or amiloride), potassium supplements, or potassium-containing salt substitutes may lead to significant increases in serum potassium. Therefore, if concomitant use of these agents is indicated, because of demonstrated hypokalemia, they should be used with caution and with frequent monitoring of serum potassium.

Lithium

Lithium toxicity has been reported in patients receiving lithium concomitantly with drugs which cause elimination of sodium, including ACE inhibitors. Lithium toxicity was usually reversible upon discontinuation of lithium and the ACE inhibitor. It is recommended that serum lithium levels be monitored frequently if lisinopril is administered concomitantly with lithium.

Hydrochlorothiazide

When administered concurrently the following drugs may interact with thiazide diuretics.

Alcohol, Barbiturates, or Narcotics

Potential of orthostatic hypotension may occur.

Antidiabetic Drugs (oral agents and insulin)

Dosage adjustment of the antidiabetic drug may be required.

Other Antihypertensive Drugs

Additive effect or potentiation.

Cholestyramine and Colestipol Resins

Absorption of hydrochlorothiazide is impaired in the presence of anionic exchange resins. Single doses of either cholestyramine or colestipol resins bind the hydrochlorothiazide and reduce its absorption from the gastrointestinal tract by up to 85 and 43 percent, respectively.

Corticosteroids, ACTH

Intensified electrolyte depletion, particularly hypokalemia.

Pressor Amines (e.g., norepinephrine)

Possible decreased response to pressor amines but not sufficient to preclude their use.

Skeletal Muscle Relaxants, Nondepolarizing (e.g., tubocurarine)

Possible increased responsiveness to the muscle relaxant.

Lithium

Should not generally be given with diuretics. Diuretic agents reduce the renal clearance of lithium and add a high risk of lithium toxicity. Refer to the package insert for lithium preparations before use of such preparations with lisinopril and hydrochlorothiazide.

Non-steroidal Anti-inflammatory Drugs

In some patients, the administration of a non-steroidal anti-inflammatory agent can reduce the diuretic, natriuretic, and antihypertensive effects of loop, potassium-sparing and thiazide diuretics. Therefore, when lisinopril and hydrochlorothiazide and non-steroidal anti-inflammatory agents are used concomitantly, the patient should be observed closely to determine if the desired effect of lisinopril and hydrochlorothiazide is obtained.

Gold

Nitritoid reactions (symptoms include facial flushing, nausea, vomiting and hypotension) have been reported rarely in patients on therapy with injectable gold (sodium aurothiomalate) and concomitant ACE inhibitor therapy including lisinopril and hydrochlorothiazide.

Carcinogenesis and Mutagenesis and Impairment of Fertility

Lisinopril and Hydrochlorothiazide

Lisinopril in combination with hydrochlorothiazide was not mutagenic in a microbial mutagen test using *Salmonella typhimurium* (Ames test) or *Escherichia coli* with or without metabolic activation or in a forward mutation assay using Chinese hamster lung cells. Lisinopril and hydrochlorothiazide did not produce DNA single strand breaks in an *in vitro* alkaline elution rat hepatocyte assay. In addition, it did

not produce increases in chromosomal aberrations in an *in vitro* test in Chinese hamster ovary cells or in an *in vivo* study in mouse bone marrow.

Lisinopril

There was no evidence of a tumorigenic effect when lisinopril was administered for 105 weeks to male and female rats at doses up to 90 mg/kg/day (about 56 or 9 times* the maximum daily human dose, based on body weight and body surface area, respectively). There was no evidence of carcinogenicity when lisinopril was administered for 92 weeks to (male and female) mice at doses up to 135 mg/kg/day (about 84 times* the maximum recommended daily human dose). This dose was 6.8 times the maximum human dose based on body surface area in mice.

* Calculations assume a human weight of 50 kg and human body surface area of 1.62m².

Lisinopril was not mutagenic in the Ames microbial mutagen test with or without metabolic activation. It was also negative in a forward mutation assay using Chinese hamster lung cells. Lisinopril did not produce single strand DNA breaks in an *in vitro* alkaline elution rat hepatocyte assay. In addition, lisinopril did not produce increases in chromosomal aberrations in an *in vitro* test in Chinese hamster ovary cells or in an *in vivo* study in mouse bone marrow.

There were no adverse effects on reproductive performance in male and female rats treated with up to 300 mg/kg/day of lisinopril. This dose is 188 times and 30 times the maximum daily human dose based on mg/kg and mg/m², respectively.

Hydrochlorothiazide

Two-year feeding studies in mice and rats conducted under the auspices of the National Toxicology Program (NTP) uncovered no evidence of a carcinogenic potential of hydrochlorothiazide in female mice (at doses of up to approximately 600 mg/kg/day) or in male and female rats (at doses of up to approximately 100 mg/kg/day). These doses are 150 times and 12 times for mice and 25 times and 4 times for rats the maximum human daily dose based on mg/kg and mg/m², respectively. The NTP, however, found equivocal evidence for hepatocarcinogenicity in male mice.

Hydrochlorothiazide was not genotoxic *in vitro* in the Ames mutagenicity assay of *Salmonella typhimurium* strains TA 98, TA 100, TA 1535, TA 1537, and TA 1538 and in the Chinese Hamster Ovary (CHO) test for chromosomal aberrations, or *in vivo* in assays using mouse germinal cell chromosomes, Chinese hamster bone marrow chromosomes, and the *Drosophila* sex-linked recessive lethal trait gene. Positive test results were obtained only in the *in vitro* CHO Sister Chromatid Exchange (clastogenicity) and in the Mouse Lymphoma Cell (mutagenicity) assays, using concentrations of hydrochlorothiazide from 43 to 1300 mcg/mL, and in the *Aspergillus nidulans* non-disjunction assay at an unspecified concentration.

Hydrochlorothiazide had no adverse effects on the fertility of mice and rats of either sex in studies wherein these species were exposed, via their diet, to doses of up to 100 and 4 mg/kg, respectively, prior to conception and throughout gestation. In mice this dose is 25 times and 2 times the maximum daily human dose based on mg/kg and mg/m², respectively. In rats this dose is 1 times and 0.2 times the maximum daily human dose based on mg/kg and mg/m², respectively.

Pregnancy

Pregnancy Categories C (first trimester) and D (second and third trimesters)

See **WARNINGS, Pregnancy, Lisinopril, Fetal/Neonatal Morbidity and Mortality.**

Nursing Mothers

It is not known whether lisinopril is secreted in human milk. However, milk of lactating rats contains radioactivity following administration of ¹⁴C lisinopril. In another study, lisinopril was present in rat milk at levels similar to plasma levels in the dams. Thiazides do appear in human milk. Because of the

potential for serious adverse reactions in nursing infants from ACE inhibitors and hydrochlorothiazide, a decision should be made whether to discontinue nursing or to discontinue lisinopril and hydrochlorothiazide, taking into account the importance of the drug to the mother.

Pediatric Use

Safety and effectiveness in pediatric patients have not been established.

Geriatric Use

Clinical studies of lisinopril and hydrochlorothiazide did not include sufficient numbers of subjects aged 65 and over to determine whether they respond differently from younger subjects. Other reported clinical experience has not identified differences in responses between the elderly and younger patients. In general, dose selection for an elderly patient should be cautious, usually starting at the low end of the dosing range, reflecting the greater frequency of decreased hepatic, renal, or cardiac function, and of concomitant disease or other drug therapy.

This drug is known to be substantially excreted by the kidney, and the risk of toxic reactions to this drug may be greater in patients with impaired renal function. Because elderly patients are more likely to have decreased renal function, care should be taken in dose selection. Evaluation of the hypertensive patient should always include assessment of renal function.

ADVERSE REACTIONS

Lisinopril and hydrochlorothiazide has been evaluated for safety in 930 patients, including 100 patients treated for 50 weeks or more.

In clinical trials with lisinopril and hydrochlorothiazide no adverse experiences peculiar to this combination drug have been observed. Adverse experiences that have occurred have been limited to those that have been previously reported with lisinopril or hydrochlorothiazide.

The most frequent clinical adverse experiences in controlled trials (including open label extensions) with any combination of lisinopril and hydrochlorothiazide were: dizziness (7.5 percent), headache (5.2 percent), cough (3.9 percent), fatigue (3.7 percent) and orthostatic effects (3.2 percent), all of which were more common than in placebo-treated patients. Generally, adverse experiences were mild and transient in nature; but see **WARNINGS** regarding angioedema and excessive hypotension or syncope. Discontinuation of therapy due to adverse effects was required in 4.4 percent of patients, principally because of dizziness, cough, fatigue and muscle cramps.

Adverse experiences occurring in greater than one percent of patients treated with lisinopril plus hydrochlorothiazide in controlled clinical trials are shown below.

Percent of Patients in Controlled Studies		
	Lisinopril-Hydrochlorothiazide (n = 930) Incidence (discontinuation)	Placebo (n = 207) Incidence
Dizziness	7.5 (0.8)	1.9
Headache	5.2 (0.3)	1.9
Cough	3.9 (0.6)	1
Fatigue	3.7 (0.4)	1
Orthostatic Effects	3.2 (0.1)	1
Diarrhea	2.5 (0.2)	2.4
Nausea	2.2 (0.1)	2.4
Upper Respiratory Infection	2.2 (0)	0
Muscle Cramps	2 (0.4)	0.5

Asthenia	1.8 (0.2)	1
Paresthesia	1.5 (0.1)	0
Hypotension	1.4 (0.3)	0.5
Vomiting	1.4 (0.1)	0.5
Dyspepsia	1.3 (0)	0
Rash	1.2 (0.1)	0.5
Impotence	1.2 (0.3)	0

Clinical adverse experiences occurring in 0.3 to 1% of patients in controlled trials and rarer, serious, possibly drug-related events reported in marketing experience are listed below:

Body as a Whole

Chest pain, abdominal pain, syncope, chest discomfort, fever, trauma, virus infection

Cardiovascular

Palpitation, orthostatic hypotension

Digestive

Gastrointestinal cramps, dry mouth, constipation, heartburn

Musculoskeletal

Back pain, shoulder pain, knee pain, back strain, myalgia, foot pain

Nervous/Psychiatric

Decreased libido, vertigo, depression, somnolence

Respiratory

Common cold, nasal congestion, influenza, bronchitis, pharyngeal pain, dyspnea, pulmonary congestion, chronic sinusitis, allergic rhinitis, pharyngeal discomfort

Skin

Flushing, pruritus, skin inflammation, diaphoresis, cutaneous pseudolymphoma

Special Senses

Blurred vision, tinnitus, otalgia

Urogenital

Urinary tract infection

Angioedema

Angioedema of the face, extremities, lips, tongue, glottis and/or larynx has been reported (see **WARNINGS**).

In rare cases, intestinal angioedema has been reported in postmarketing experience.

Hypotension

In clinical trials, adverse effects relating to hypotension occurred as follows: hypotension (1.4), orthostatic hypotension (0.5), other orthostatic effects (3.2). In addition, syncope occurred in 0.8 percent of patients (see **WARNINGS**).

Cough

See **PRECAUTIONS, Cough**

Clinical Laboratory Test Findings

Serum Electrolytes

See **PRECAUTIONS**

Creatinine, Blood Urea Nitrogen

Minor reversible increases in blood urea nitrogen and serum creatinine were observed in patients with essential hypertension treated with lisinopril and hydrochlorothiazide. More marked increases have also been reported and were more likely to occur in patients with renal artery stenosis (see **PRECAUTIONS**).

Serum Uric Acid, Glucose, Magnesium, Cholesterol, Triglycerides and Calcium

See **PRECAUTIONS**

Hemoglobin and Hematocrit

Small decreases in hemoglobin and hematocrit (mean decreases of approximately 0.5 g% and 1.5 vol%, respectively) occurred frequently in hypertensive patients treated with lisinopril and hydrochlorothiazide but were rarely of clinical importance unless another cause of anemia coexisted. In clinical trials, 0.4% of patients discontinued therapy due to anemia.

Liver Function Tests

Rarely, elevations of liver enzymes and/or serum bilirubin have occurred (see **WARNINGS, Hepatic Failure**).

Other adverse reactions that have been reported with the individual components are listed below:

Lisinopril

In clinical trials, adverse reactions which occurred with lisinopril were also seen with lisinopril and hydrochlorothiazide. In addition, and since lisinopril has been marketed, the following adverse reactions have been reported with lisinopril and should be considered potential adverse reactions for lisinopril and hydrochlorothiazide:

Body as a Whole

Anaphylactoid reactions (see **WARNINGS, Anaphylactoid Reactions During Membrane Exposure**), malaise, edema, facial edema, pain, pelvic pain, flank pain, chills

Cardiovascular

Cardiac arrest, myocardial infarction or cerebrovascular accident, possibly secondary to excessive hypotension in high-risk patients (see **WARNINGS, Hypotension**), pulmonary embolism and infarction, worsening of heart failure, arrhythmias (including tachycardia, ventricular tachycardia, atrial tachycardia, atrial fibrillation, bradycardia, and premature ventricular contractions), angina pectoris, transient ischemic attacks, paroxysmal nocturnal dyspnea, decreased blood pressure, peripheral edema, vasculitis

Digestive

Pancreatitis, hepatitis (hepatocellular or cholestatic jaundice) (see **WARNINGS, Hepatic Failure**), gastritis, anorexia, flatulence, increased salivation

Endocrine

Diabetes mellitus, inappropriate antidiuretic hormone secretion

Hematologic

Rare cases of neutropenia, thrombocytopenia, and bone marrow depression have been reported. Hemolytic anemia has been reported; a causal relationship to lisinopril cannot be excluded.

Metabolic

Gout, weight loss, dehydration, fluid overload, weight gain

Musculoskeletal

Arthritis, arthralgia, neck pain, hip pain, joint pain, leg pain, arm pain, lumbago

Nervous System/Psychiatric

Ataxia, memory impairment, tremor, insomnia, stroke, nervousness, confusion, peripheral neuropathy (e.g., paresthesia, dysesthesia), spasm, hypersomnia, irritability; mood alterations (including depressive symptoms)

Respiratory

Malignant lung neoplasms, hemoptysis, pulmonary edema, pulmonary infiltrates, bronchospasm, asthma, pleural effusion, pneumonia, eosinophilic pneumonitis, wheezing, orthopnea, painful respiration, epistaxis, laryngitis, sinusitis, pharyngitis, rhinitis, rhinorrhea, chest sound abnormalities

Skin

Urticaria, alopecia, herpes zoster, photosensitivity, skin lesions, skin infections, pemphigus, erythema, rare cases of other severe skin reactions, including toxic epidermal necrolysis and Stevens-Johnson syndrome (causal relationship has not been established)

Special Senses

Visual loss, diplopia, photophobia, taste alteration, olfactory disturbance

Urogenital

Acute renal failure, oliguria, anuria, uremia, progressive azotemia, renal dysfunction (see **PRECAUTIONS** and **DOSAGE AND ADMINISTRATION**), pyelonephritis, dysuria, breast pain

Miscellaneous

A symptom complex has been reported which may include a positive ANA, an elevated erythrocyte sedimentation rate, arthralgia/arthritis, myalgia, fever, vasculitis, eosinophilia and leukocytosis. Rash, photosensitivity or other dermatological manifestations may occur alone or in combination with these symptoms.

Fetal/Neonatal Morbidity and Mortality

See **WARNINGS, Pregnancy, *Lisinopril, Fetal/Neonatal Morbidity and Mortality***

Hydrochlorothiazide

Body as a Whole

Weakness

Digestive

Anorexia, gastric irritation, cramping, jaundice (intrahepatic cholestatic jaundice), (see **WARNINGS, Hepatic Failure**), pancreatitis, sialoadenitis, constipation

Hematologic

Leukopenia, agranulocytosis, thrombocytopenia, aplastic anemia, hemolytic anemia

Musculoskeletal

Muscle spasm

Nervous System/Psychiatric

Restlessness

Renal

Renal failure, renal dysfunction, interstitial nephritis (see **WARNINGS**)

Skin

Erythema multiforme including Stevens-Johnson syndrome, exfoliative dermatitis including toxic epidermal necrolysis, alopecia

Special Senses

Xanthopsia

Hypersensitivity

Purpura, photosensitivity, urticaria, necrotizing angitis (vasculitis and cutaneous vasculitis), respiratory distress including pneumonitis and pulmonary edema, anaphylactic reactions

OVERDOSAGE

No specific information is available on the treatment of overdose with lisinopril and hydrochlorothiazide. Treatment is symptomatic and supportive. Therapy with lisinopril and hydrochlorothiazide should be discontinued and the patient observed closely. Suggested measures include induction of emesis and/or gastric lavage, and correction of dehydration, electrolyte imbalance and hypotension by established procedures.

Lisinopril

Following a single oral dose of 20 g/kg, no lethality occurred in rats and death occurred in one of 20 mice receiving the same dose. The most likely manifestation of overdose would be hypotension, for which the usual treatment would be intravenous infusion of normal saline solution.

Lisinopril can be removed by hemodialysis (see **WARNINGS**, *Anaphylactoid Reactions During Membrane Exposure*).

Hydrochlorothiazide

Oral administration of a single oral dose of 10 g/kg to mice and rats was not lethal. The most common signs and symptoms observed are those caused by electrolyte depletion (hypokalemia, hypochloremia, hyponatremia) and dehydration resulting from excessive diuresis. If digitalis has also been administered, hypokalemia may accentuate cardiac arrhythmias.

DOSAGE AND ADMINISTRATION

Lisinopril monotherapy is an effective treatment of hypertension in once-daily doses of 10 to 80 mg, while hydrochlorothiazide monotherapy is effective in doses of 12.5 to 50 mg per day. In clinical trials of lisinopril/hydrochlorothiazide combination therapy using lisinopril doses of 10 to 80 mg and hydrochlorothiazide doses of 6.25 to 50 mg, the antihypertensive response rates generally increased

with increasing dose of either component.

The side effects (see **WARNINGS**) of lisinopril are generally rare and apparently independent of dose; those of hydrochlorothiazide are a mixture of dose-dependent phenomena (primarily hypokalemia) and dose-independent phenomena (e.g., pancreatitis), the former much more common than the latter. Therapy with any combination of lisinopril and hydrochlorothiazide may be associated with either or both dose-independent or dose-dependant side effects, but addition of lisinopril in clinical trials blunted the hypokalemia normally seen with diuretics.

To minimize dose-independent side effects, it is usually appropriate to begin combination therapy only after a patient has failed to achieve the desired effect with monotherapy.

Dose Titration Guided by Clinical Effect

A patient whose blood pressure is not adequately controlled with either lisinopril or hydrochlorothiazide monotherapy may be switched to lisinopril/hydrochlorothiazide 10/12.5 or lisinopril/hydrochlorothiazide 20/12.5, depending on current monotherapy dose. Further increases of either or both components should depend on clinical response with blood pressure measured at the interdosing interval to ensure that there is an adequate antihypertensive effect at that time. The hydrochlorothiazide dose should generally not be increased until 2 to 3 weeks have elapsed. After addition of the diuretic it may be possible to reduce the dose of lisinopril. Patients whose blood pressures are adequately controlled with 25 mg of daily hydrochlorothiazide, but who experience significant potassium loss with this regimen may achieve similar or greater blood-pressure control without electrolyte disturbance if they are switched to lisinopril/hydrochlorothiazide 10/12.5.

In patients who are currently being treated with a diuretic, symptomatic hypotension occasionally may occur following the initial dose of lisinopril. The diuretic should, if possible, be discontinued for two to three days before beginning therapy with lisinopril to reduce the likelihood of hypotension (see **WARNINGS**). If the patient's blood pressure is not controlled with lisinopril alone, diuretic therapy may be resumed.

If the diuretic cannot be discontinued, an initial dose of 5 mg of lisinopril should be used under medical supervision for at least two hours and until blood pressure has stabilized for at least an additional hour (see **WARNINGS** and **PRECAUTIONS, Drug Interactions**).

Concomitant administration of lisinopril and hydrochlorothiazide with potassium supplements, potassium salt substitutes or potassium-sparing diuretics may lead to increases of serum potassium (see **PRECAUTIONS**).

Replacement Therapy

The combination may be substituted for the titrated individual components.

Use in Renal Impairment

Regimens of therapy with lisinopril/hydrochlorothiazide need not take account of renal function as long as the patient's creatinine clearance is $> 30 \text{ mL/min/1.7m}^2$ (serum creatinine roughly $\leq 3 \text{ mg/dL}$ or $265 \text{ }\mu\text{mol/L}$). In patients with more severe renal impairment, loop diuretics are preferred to thiazides, so lisinopril and hydrochlorothiazide is not recommended (see **WARNINGS, Anaphylactoid Reactions During Membrane Exposure**).

HOW SUPPLIED

Lisinopril and Hydrochlorothiazide Tablets USP, 10/12.5mg are available as blue, round, biconvex, unscored tablets debossed



and “5033” on one side and “10/12.5” on the other side containing 10 mg lisinopril USP and 12.5 mg hydrochlorothiazide USP, packaged in blisterpacks of 30 tablets.

Lisinopril and Hydrochlorothiazide Tablets USP, 20/12.5mg are available as yellow, round, flat-faced, beveled edge, unscored tablets debossed



and “5034” on one side and “20/12.5” on the other side containing 20 mg lisinopril USP and 12.5 mg hydrochlorothiazide USP, packaged in blisterpacks of 30 tablets.

Lisinopril and Hydrochlorothiazide Tablets USP, 20/25mg are available as peach, round, flat-faced, beveled edge, unscored tablets debossed



and “5032” on one side and “20/25” on the other side containing 20 mg lisinopril USP and 25 mg hydrochlorothiazide USP, packaged in blisterpacks of 30 tablets.

Dispense in a tight container as defined in the USP, with a child-resistant closure (as required).

Store at 20° to 25°C (68° to 77°F) [See USP Controlled Room Temperature].

PROTECT FROM EXCESSIVE LIGHT AND HUMIDITY

KEEP THIS AND ALL MEDICATIONS OUT OF THE REACH OF CHILDREN.

Manufactured In India By:

EMCURE PHARMACEUTICALS LTD.

Hinjwadi, Pune, India

Manufactured For:

TEVA PHARMACEUTICALS USA

Sellersville, PA 18960

Rev. E 8/2011

PRINCIPAL DISPLAY PANEL

NDC 0615-7581-39



VL NDC 0615-7581-39
**LISINAPRIL and
 HYDROCHLOROTHIAZIDE**
 TABS, USP 10 mg/12.5 mg



LOT
 7581

Rx
 Only

EXP

017250337039
 11079-39

QTY
 30

MFG BY EMCURE
 for TEVA
 (NDC 0172-5033-70)
 PKG BY VANGARD
 GLASGOW, KY 42141

(Mfg for Teva, NDC 0172-5033-70)

**Lisinopril and
 Hydrochlorothiazide**
Tabs, USP
10 mg/12.5 mg

Received: _____

24	16	8
31	23	15
30	22	14
29	21	13
28	20	12
27	19	11
26	18	10
25	17	9

START DATE _____ START TIME _____

STORE AT 20°-25°C (68°-77°F)
 (SEE USP CONTROLLED ROOM TEMPERATURE)
 Dispense in a light container.
**PROTECT FROM EXCESSIVE
 LIGHT AND HUMIDITY.**

Each tab contains 10 mg lisinopril, USP
 and 12.5 mg hydrochlorothiazide, USP.

See Package Insert Binder for Dosage Information
FOR INSTITUTIONAL USE ONLY

16	8
30	23
29	22
28	21
27	20
26	19
25	18
24	17
17	9
1	1

<p>Pkg By Vanguard, Glasgow, KY 42141 LISINAPRIL and HYDROCHLOROTHIAZIDE TAB, USP 10 mg/12.5 mg LOT 7581</p>	<p>Pkg By Vanguard, Glasgow, KY 42141 LISINAPRIL and HYDROCHLOROTHIAZIDE TAB, USP 10 mg/12.5 mg LOT 7581</p>	<p>Pkg By Vanguard, Glasgow, KY 42141 LISINAPRIL and HYDROCHLOROTHIAZIDE TAB, USP 10 mg/12.5 mg LOT 7581</p>	<p>10933 Rev 00 0172503370 LISINAPRIL and HYDROCHLOROTHIAZIDE TAB, USP 10 mg/12.5 mg LOT 7581</p>
<p>Pkg By Vanguard, Glasgow, KY 42141 LISINAPRIL and HYDROCHLOROTHIAZIDE TAB, USP 10 mg/12.5 mg LOT 7581</p>	<p>Pkg By Vanguard, Glasgow, KY 42141 LISINAPRIL and HYDROCHLOROTHIAZIDE TAB, USP 10 mg/12.5 mg LOT 7581</p>	<p>Pkg By Vanguard, Glasgow, KY 42141 LISINAPRIL and HYDROCHLOROTHIAZIDE TAB, USP 10 mg/12.5 mg LOT 7581</p>	<p>Pkg By Vanguard, Glasgow, KY 42141 LISINAPRIL and HYDROCHLOROTHIAZIDE TAB, USP 10 mg/12.5 mg LOT 7581</p>
<p>Pkg By Vanguard, Glasgow, KY 42141 LISINAPRIL and HYDROCHLOROTHIAZIDE TAB, USP 10 mg/12.5 mg LOT 7581</p>	<p>Pkg By Vanguard, Glasgow, KY 42141 LISINAPRIL and HYDROCHLOROTHIAZIDE TAB, USP 10 mg/12.5 mg LOT 7581</p>	<p>Pkg By Vanguard, Glasgow, KY 42141 LISINAPRIL and HYDROCHLOROTHIAZIDE TAB, USP 10 mg/12.5 mg LOT 7581</p>	<p>Pkg By Vanguard, Glasgow, KY 42141 LISINAPRIL and HYDROCHLOROTHIAZIDE TAB, USP 10 mg/12.5 mg LOT 7581</p>
<p>Pkg By Vanguard, Glasgow, KY 42141 LISINAPRIL and HYDROCHLOROTHIAZIDE TAB, USP 10 mg/12.5 mg LOT 7581</p>	<p>Pkg By Vanguard, Glasgow, KY 42141 LISINAPRIL and HYDROCHLOROTHIAZIDE TAB, USP 10 mg/12.5 mg LOT 7581</p>	<p>Pkg By Vanguard, Glasgow, KY 42141 LISINAPRIL and HYDROCHLOROTHIAZIDE TAB, USP 10 mg/12.5 mg LOT 7581</p>	<p>Pkg By Vanguard, Glasgow, KY 42141 LISINAPRIL and HYDROCHLOROTHIAZIDE TAB, USP 10 mg/12.5 mg LOT 7581</p>
<p>Pkg By Vanguard, Glasgow, KY 42141 LISINAPRIL and HYDROCHLOROTHIAZIDE TAB, USP 10 mg/12.5 mg LOT 7581</p>	<p>Pkg By Vanguard, Glasgow, KY 42141 LISINAPRIL and HYDROCHLOROTHIAZIDE TAB, USP 10 mg/12.5 mg LOT 7581</p>	<p>Pkg By Vanguard, Glasgow, KY 42141 LISINAPRIL and HYDROCHLOROTHIAZIDE TAB, USP 10 mg/12.5 mg LOT 7581</p>	<p>Pkg By Vanguard, Glasgow, KY 42141 LISINAPRIL and HYDROCHLOROTHIAZIDE TAB, USP 10 mg/12.5 mg LOT 7581</p>
<p>Pkg By Vanguard, Glasgow, KY 42141 LISINAPRIL and HYDROCHLOROTHIAZIDE TAB, USP 10 mg/12.5 mg LOT 7581</p>	<p>Pkg By Vanguard, Glasgow, KY 42141 LISINAPRIL and HYDROCHLOROTHIAZIDE TAB, USP 10 mg/12.5 mg LOT 7581</p>	<p>Pkg By Vanguard, Glasgow, KY 42141 LISINAPRIL and HYDROCHLOROTHIAZIDE TAB, USP 10 mg/12.5 mg LOT 7581</p>	<p>Pkg By Vanguard, Glasgow, KY 42141 LISINAPRIL and HYDROCHLOROTHIAZIDE TAB, USP 10 mg/12.5 mg LOT 7581</p>
<p>Pkg By Vanguard, Glasgow, KY 42141 LISINAPRIL and HYDROCHLOROTHIAZIDE TAB, USP 10 mg/12.5 mg LOT 7581</p>	<p>Pkg By Vanguard, Glasgow, KY 42141 LISINAPRIL and HYDROCHLOROTHIAZIDE TAB, USP 10 mg/12.5 mg LOT 7581</p>	<p>Pkg By Vanguard, Glasgow, KY 42141 LISINAPRIL and HYDROCHLOROTHIAZIDE TAB, USP 10 mg/12.5 mg LOT 7581</p>	<p>Pkg By Vanguard, Glasgow, KY 42141 LISINAPRIL and HYDROCHLOROTHIAZIDE TAB, USP 10 mg/12.5 mg LOT 7581</p>

Omnicare The overall configuration of this package is a trademark of Omnicare, Inc.

PRINCIPAL DISPLAY PANEL

NDC 0615-7577-39



VL NDC 0615-7577-39
**LISINAPRIL and
 HYDROCHLOROTHIAZIDE**
 TABS, USP 20 mg/12.5 mg



LOT
 7577

Rx
 Only

EXP

017250347039
 11100-39

QTY
 30

MFG BY EMCURE
 for TEVA
 (NDC 0172-5034-70)
 PKG BY VANGARD
 GLASGOW, KY 42141

(Mfg for Teva, NDC 0172-5034-70)

**Lisinopril and
 Hydrochlorothiazide**
Tabs, USP
20 mg/12.5 mg

Received: _____

31	24	16	8
30	23	15	7
29	22	14	6
28	21	13	5
27	20	12	4
26	19	11	3
25	18	10	2
24	17	9	1

START DATE _____ START TIME _____

STORE AT 20°-25°C (68°-77°F)
 (SEE USP CONTROLLED ROOM TEMPERATURE)
 Dispense in a light container.
**PROTECT FROM EXCESSIVE
 LIGHT AND HUMIDITY.**

Each tab contains 20 mg lisinopril, USP
 and 12.5 mg hydrochlorothiazide, USP.

See Package Insert Binder for Dosage Information
FOR INSTITUTIONAL USE ONLY

30	23	15	7
29	22	14	6
28	21	13	5
27	20	12	4
26	19	11	3
25	18	10	2
24	17	9	1

<p>Pkg By Vanguard, Glasgow, KY 42141 LISINAPRIL and HYDROCHLOROTHIAZIDE TAB, USP 20 mg/12.5 mg LOT 7577</p>	<p>Pkg By Vanguard, Glasgow, KY 42141 LISINAPRIL and HYDROCHLOROTHIAZIDE TAB, USP 20 mg/12.5 mg LOT 7577</p>	<p>Pkg By Vanguard, Glasgow, KY 42141 LISINAPRIL and HYDROCHLOROTHIAZIDE TAB, USP 20 mg/12.5 mg LOT 7577</p>	<p>10918 Rev 00 Vanguard, KY 42141 0172503470</p>
<p>Pkg By Vanguard, Glasgow, KY 42141 LISINAPRIL and HYDROCHLOROTHIAZIDE TAB, USP 20 mg/12.5 mg LOT 7577</p>	<p>Pkg By Vanguard, Glasgow, KY 42141 LISINAPRIL and HYDROCHLOROTHIAZIDE TAB, USP 20 mg/12.5 mg LOT 7577</p>	<p>Pkg By Vanguard, Glasgow, KY 42141 LISINAPRIL and HYDROCHLOROTHIAZIDE TAB, USP 20 mg/12.5 mg LOT 7577</p>	<p>Pkg By Vanguard, Glasgow, KY 42141 LISINAPRIL and HYDROCHLOROTHIAZIDE TAB, USP 20 mg/12.5 mg LOT 7577</p>
<p>Pkg By Vanguard, Glasgow, KY 42141 LISINAPRIL and HYDROCHLOROTHIAZIDE TAB, USP 20 mg/12.5 mg LOT 7577</p>	<p>Pkg By Vanguard, Glasgow, KY 42141 LISINAPRIL and HYDROCHLOROTHIAZIDE TAB, USP 20 mg/12.5 mg LOT 7577</p>	<p>Pkg By Vanguard, Glasgow, KY 42141 LISINAPRIL and HYDROCHLOROTHIAZIDE TAB, USP 20 mg/12.5 mg LOT 7577</p>	<p>Pkg By Vanguard, Glasgow, KY 42141 LISINAPRIL and HYDROCHLOROTHIAZIDE TAB, USP 20 mg/12.5 mg LOT 7577</p>
<p>Pkg By Vanguard, Glasgow, KY 42141 LISINAPRIL and HYDROCHLOROTHIAZIDE TAB, USP 20 mg/12.5 mg LOT 7577</p>	<p>Pkg By Vanguard, Glasgow, KY 42141 LISINAPRIL and HYDROCHLOROTHIAZIDE TAB, USP 20 mg/12.5 mg LOT 7577</p>	<p>Pkg By Vanguard, Glasgow, KY 42141 LISINAPRIL and HYDROCHLOROTHIAZIDE TAB, USP 20 mg/12.5 mg LOT 7577</p>	<p>Pkg By Vanguard, Glasgow, KY 42141 LISINAPRIL and HYDROCHLOROTHIAZIDE TAB, USP 20 mg/12.5 mg LOT 7577</p>
<p>Pkg By Vanguard, Glasgow, KY 42141 LISINAPRIL and HYDROCHLOROTHIAZIDE TAB, USP 20 mg/12.5 mg LOT 7577</p>	<p>Pkg By Vanguard, Glasgow, KY 42141 LISINAPRIL and HYDROCHLOROTHIAZIDE TAB, USP 20 mg/12.5 mg LOT 7577</p>	<p>Pkg By Vanguard, Glasgow, KY 42141 LISINAPRIL and HYDROCHLOROTHIAZIDE TAB, USP 20 mg/12.5 mg LOT 7577</p>	<p>Pkg By Vanguard, Glasgow, KY 42141 LISINAPRIL and HYDROCHLOROTHIAZIDE TAB, USP 20 mg/12.5 mg LOT 7577</p>
<p>Pkg By Vanguard, Glasgow, KY 42141 LISINAPRIL and HYDROCHLOROTHIAZIDE TAB, USP 20 mg/12.5 mg LOT 7577</p>	<p>Pkg By Vanguard, Glasgow, KY 42141 LISINAPRIL and HYDROCHLOROTHIAZIDE TAB, USP 20 mg/12.5 mg LOT 7577</p>	<p>Pkg By Vanguard, Glasgow, KY 42141 LISINAPRIL and HYDROCHLOROTHIAZIDE TAB, USP 20 mg/12.5 mg LOT 7577</p>	<p>Pkg By Vanguard, Glasgow, KY 42141 LISINAPRIL and HYDROCHLOROTHIAZIDE TAB, USP 20 mg/12.5 mg LOT 7577</p>

Omnicare The overall configuration of this package is a trademark of Omnicare, Inc.

PRINCIPAL DISPLAY PANEL

NDC 0615-7582-39



VLINDC 0615-7582-39
**LISINAPRIL and
 HYDROCHLOROTHIAZIDE**
 TABS, USP 20 mg/25 mg



LOT
 7582
 EXP
 017250327039
 11085-39

Rx
 Only

QTY
 30

MFG BY EMCURE
 for TEVA
 (NDC 0172-5032-70)
 PKG BY VANGARD
 GLASGOW, KY 42141

(Mfg for Teva, NDC 0172-5032-70)

**Lisinopril and
 Hydrochlorothiazide
 Tabs, USP
 20 mg/25 mg**

Received: _____

24	16	8
31	23	15
30	22	14
29	21	13
28	20	12
27	19	11
26	18	10
25	17	9

START DATE _____ START TIME _____

STORE AT 20°-25°C (68°-77°F)
 (SEE USP CONTROLLED ROOM TEMPERATURE)
 Dispense in a light container.
**PROTECT FROM EXCESSIVE
 LIGHT AND HUMIDITY.**

Each tab contains 20 mg lisinopril, USP
 and 25 mg hydrochlorothiazide, USP.

See Package Insert Binder for Dosage Information
FOR INSTITUTIONAL USE ONLY

16	8
30	23
29	22
28	21
27	20
26	19
25	18
24	17
17	9
1	1

<p>Pkg By Vanguard, Glasgow, KY 42141 LISINAPRIL and HYDROCHLOROTHIAZIDE TAB, USP 20 mg/25 mg LOT 7582</p>	<p>Pkg By Vanguard, Glasgow, KY 42141 LISINAPRIL and HYDROCHLOROTHIAZIDE TAB, USP 20 mg/25 mg LOT 7582</p>	<p>Pkg By Vanguard, Glasgow, KY 42141 LISINAPRIL and HYDROCHLOROTHIAZIDE TAB, USP 20 mg/25 mg LOT 7582</p>	<p>10935 Rev 00 Vanguard, KY 42141 0172503270</p>
<p>Pkg By Vanguard, Glasgow, KY 42141 LISINAPRIL and HYDROCHLOROTHIAZIDE TAB, USP 20 mg/25 mg LOT 7582</p>	<p>Pkg By Vanguard, Glasgow, KY 42141 LISINAPRIL and HYDROCHLOROTHIAZIDE TAB, USP 20 mg/25 mg LOT 7582</p>	<p>Pkg By Vanguard, Glasgow, KY 42141 LISINAPRIL and HYDROCHLOROTHIAZIDE TAB, USP 20 mg/25 mg LOT 7582</p>	<p>Pkg By Vanguard, Glasgow, KY 42141 LISINAPRIL and HYDROCHLOROTHIAZIDE TAB, USP 20 mg/25 mg LOT 7582</p>
<p>Pkg By Vanguard, Glasgow, KY 42141 LISINAPRIL and HYDROCHLOROTHIAZIDE TAB, USP 20 mg/25 mg LOT 7582</p>	<p>Pkg By Vanguard, Glasgow, KY 42141 LISINAPRIL and HYDROCHLOROTHIAZIDE TAB, USP 20 mg/25 mg LOT 7582</p>	<p>Pkg By Vanguard, Glasgow, KY 42141 LISINAPRIL and HYDROCHLOROTHIAZIDE TAB, USP 20 mg/25 mg LOT 7582</p>	<p>Pkg By Vanguard, Glasgow, KY 42141 LISINAPRIL and HYDROCHLOROTHIAZIDE TAB, USP 20 mg/25 mg LOT 7582</p>
<p>Pkg By Vanguard, Glasgow, KY 42141 LISINAPRIL and HYDROCHLOROTHIAZIDE TAB, USP 20 mg/25 mg LOT 7582</p>	<p>Pkg By Vanguard, Glasgow, KY 42141 LISINAPRIL and HYDROCHLOROTHIAZIDE TAB, USP 20 mg/25 mg LOT 7582</p>	<p>Pkg By Vanguard, Glasgow, KY 42141 LISINAPRIL and HYDROCHLOROTHIAZIDE TAB, USP 20 mg/25 mg LOT 7582</p>	<p>Pkg By Vanguard, Glasgow, KY 42141 LISINAPRIL and HYDROCHLOROTHIAZIDE TAB, USP 20 mg/25 mg LOT 7582</p>
<p>Pkg By Vanguard, Glasgow, KY 42141 LISINAPRIL and HYDROCHLOROTHIAZIDE TAB, USP 20 mg/25 mg LOT 7582</p>	<p>Pkg By Vanguard, Glasgow, KY 42141 LISINAPRIL and HYDROCHLOROTHIAZIDE TAB, USP 20 mg/25 mg LOT 7582</p>	<p>Pkg By Vanguard, Glasgow, KY 42141 LISINAPRIL and HYDROCHLOROTHIAZIDE TAB, USP 20 mg/25 mg LOT 7582</p>	<p>Pkg By Vanguard, Glasgow, KY 42141 LISINAPRIL and HYDROCHLOROTHIAZIDE TAB, USP 20 mg/25 mg LOT 7582</p>
<p>Pkg By Vanguard, Glasgow, KY 42141 LISINAPRIL and HYDROCHLOROTHIAZIDE TAB, USP 20 mg/25 mg LOT 7582</p>	<p>Pkg By Vanguard, Glasgow, KY 42141 LISINAPRIL and HYDROCHLOROTHIAZIDE TAB, USP 20 mg/25 mg LOT 7582</p>	<p>Pkg By Vanguard, Glasgow, KY 42141 LISINAPRIL and HYDROCHLOROTHIAZIDE TAB, USP 20 mg/25 mg LOT 7582</p>	<p>Pkg By Vanguard, Glasgow, KY 42141 LISINAPRIL and HYDROCHLOROTHIAZIDE TAB, USP 20 mg/25 mg LOT 7582</p>
<p>Pkg By Vanguard, Glasgow, KY 42141 LISINAPRIL and HYDROCHLOROTHIAZIDE TAB, USP 20 mg/25 mg LOT 7582</p>	<p>Pkg By Vanguard, Glasgow, KY 42141 LISINAPRIL and HYDROCHLOROTHIAZIDE TAB, USP 20 mg/25 mg LOT 7582</p>	<p>Pkg By Vanguard, Glasgow, KY 42141 LISINAPRIL and HYDROCHLOROTHIAZIDE TAB, USP 20 mg/25 mg LOT 7582</p>	<p>Pkg By Vanguard, Glasgow, KY 42141 LISINAPRIL and HYDROCHLOROTHIAZIDE TAB, USP 20 mg/25 mg LOT 7582</p>

Omnicare The overall configuration of this package is a trademark of Omnicare, Inc.

LISINAPRIL AND HYDROCHLOROTHIAZIDE

lisinopril and hydrochlorothiazide tablet

Product Information

Product Type	HUMAN PRESCRIPTION DRUG	Item Code (Source)	NDC:0615-758 1(NDC:0172-5033)
Route of Administration	ORAL		

Active Ingredient/Active Moiety

Ingredient Name	Basis of Strength	Strength
LISINAPRIL (UNII: E7199S1YWR) (LISINAPRIL ANHYDROUS - UNII:7Q3P4BS2FD)	LISINAPRIL	10 mg
HYDROCHLOROTHIAZIDE (UNII: 0J48LPH2TH) (HYDROCHLOROTHIAZIDE - UNII:0J48LPH2TH)	HYDROCHLOROTHIAZIDE	12.5 mg

Inactive Ingredients

Ingredient Name	Strength
CALCIUM PHOSPHATE, DIBASIC, ANHYDROUS (UNII: L11K75P92J)	
MAGNESIUM STEARATE (UNII: 70097M6I30)	
MANNITOL (UNII: 3OWL53L36A)	
STARCH, CORN (UNII: O8232NY3SJ)	

TALC (UNII: 7SEV7J4R1U)	
FD&C BLUE NO. 1 (UNII: HBR47K3TBD)	
ALUMINUM OXIDE (UNII: LM26O6933)	

Product Characteristics

Color	BLUE	Score	no score
Shape	ROUND	Size	6mm
Flavor		Imprint Code	5033;10;12;5
Contains			

Packaging

#	Item Code	Package Description	Marketing Start Date	Marketing End Date
1	NDC:0615-7581-39	30 in 1 BLISTER PACK		

Marketing Information

Marketing Category	Application Number or Monograph Citation	Marketing Start Date	Marketing End Date
ANDA	ANDA075776	09/13/2011	

LISINOPRIL AND HYDROCHLOROTHIAZIDE

lisinopril and hydrochlorothiazide tablet

Product Information

Product Type	HUMAN PRESCRIPTION DRUG	Item Code (Source)	NDC:0615-7577(NDC:0172-5034)
Route of Administration	ORAL		

Active Ingredient/Active Moiety

Ingredient Name	Basis of Strength	Strength
LISINOPRIL (UNII: E7199S1YWR) (LISINOPRIL ANHYDROUS - UNII:7Q3P4BS2FD)	LISINOPRIL	20 mg
HYDROCHLOROTHIAZIDE (UNII: 0J48LPH2TH) (HYDROCHLOROTHIAZIDE - UNII:0J48LPH2TH)	HYDROCHLOROTHIAZIDE	12.5 mg

Inactive Ingredients

Ingredient Name	Strength
CALCIUM PHOSPHATE, DIBASIC, ANHYDROUS (UNII: L11K75P92J)	
MAGNESIUM STEARATE (UNII: 70097M6I30)	
MANNITOL (UNII: 3OWL53L36A)	
STARCH, CORN (UNII: O8232NY3SJ)	
TALC (UNII: 7SEV7J4R1U)	
FERRIC OXIDE RED (UNII: 1K09F3G675)	
FERRIC OXIDE YELLOW (UNII: EX438O2MRT)	

Product Characteristics

Color	YELLOW	Score	no score
Shape	ROUND	Size	8mm
Flavor		Imprint Code	5034;20;12;5
Contains			

Packaging

#	Item Code	Package Description	Marketing Start Date	Marketing End Date
1	NDC:0615-7577-39	30 in 1 BLISTER PACK		

Marketing Information

Marketing Category	Application Number or Monograph Citation	Marketing Start Date	Marketing End Date
ANDA	ANDA075776	09/13/2011	

LISINOPRIL AND HYDROCHLOROTHIAZIDE

lisinopril and hydrochlorothiazide tablet

Product Information

Product Type	HUMAN PRESCRIPTION DRUG	Item Code (Source)	NDC:0615-7582(NDC:0172-5032)
Route of Administration	ORAL		

Active Ingredient/Active Moiety

Ingredient Name	Basis of Strength	Strength
LISINOPRIL (UNII: E7199S1YWR) (LISINOPRIL ANHYDROUS - UNII:7Q3P4BS2FD)	LISINOPRIL	20 mg
HYDROCHLOROTHIAZIDE (UNII: 0J48LPH2TH) (HYDROCHLOROTHIAZIDE - UNII:0J48LPH2TH)	HYDROCHLOROTHIAZIDE	25 mg

Inactive Ingredients

Ingredient Name	Strength
CALCIUM PHOSPHATE, DIBASIC, ANHYDROUS (UNII: L11K75P92J)	
MAGNESIUM STEARATE (UNII: 70097M6I30)	
MANNITOL (UNII: 3OWL53L36A)	
STARCH, CORN (UNII: O8232NY3SJ)	
TALC (UNII: 7SEV7J4R1U)	
FD&C YELLOW NO. 6 (UNII: H77VEI93A8)	
ALUMINUM OXIDE (UNII: LM26O6933)	

Product Characteristics

Color	PINK (Peach)	Score	no score
Shape	ROUND	Size	8mm

Flavor		Imprint Code	5032;20;25
Contains			

Packaging

#	Item Code	Package Description	Marketing Start Date	Marketing End Date
1	NDC:0615-7582-39	30 in 1 BLISTER PACK		

Marketing Information

Marketing Category	Application Number or Monograph Citation	Marketing Start Date	Marketing End Date
ANDA	ANDA075776	09/13/2011	

Labeler - NCS HealthCare of KY, Inc dba Vanguard Labs (050052943)

Establishment

Name	Address	ID/FEI	Business Operations
NCS HealthCare of KY, Inc dba Vanguard Labs		050052943	RELABEL(0615-7581, 0615-7577, 0615-7582) , REPACK(0615-7581, 0615-7577, 0615-7582)

Revised: 2/2013

NCS HealthCare of KY, Inc dba Vanguard Labs