

**MEDROXYPROGESTERONE ACETATE INJECTABLE SUSPENSION-**  
**medroxyprogesterone acetate injection, suspension**  
**Hikma Pharmaceuticals USA inc.**

-----  
**HIGHLIGHTS OF PRESCRIBING INFORMATION**

These highlights do not include all the information needed to use **MEDROXYPROGESTERONE ACETATE INJECTABLE SUSPENSION** safely and effectively. See full prescribing information for **MEDROXYPROGESTERONE ACETATE INJECTABLE SUSPENSION**.

**MEDROXYPROGESTERONE ACETATE** injectable suspension, for intramuscular use

Initial U.S. Approval: 1959

**WARNING: LOSS OF BONE MINERAL DENSITY**

*See full prescribing information for complete boxed warning.*

- **Women who use medroxyprogesterone acetate injectable suspension may lose significant bone mineral density. Bone loss is greater with increasing duration of use and may not be completely reversible. (5.1)**
- **It is unknown if use of medroxyprogesterone acetate injectable suspension during adolescence or early adulthood, a critical period of bone accretion, will reduce peak bone mass and increase the risk for osteoporotic fracture in later life. (5.1)**
- **Medroxyprogesterone acetate injectable suspension is not recommended as a long-term (i.e., longer than 2 years) birth control method unless other options are considered inadequate. (1, 5.1)**

-----  
**RECENT MAJOR CHANGES**

Indications and Usage (1)

12/2020

-----  
**INDICATIONS AND USAGE**

Medroxyprogesterone acetate injectable suspension is a progestin indicated for use by females of reproductive potential to prevent pregnancy. (1)

Limitations of Use:

The use of medroxyprogesterone acetate injectable suspension is not recommended as a long-term (i.e., longer than 2 years) birth control method unless other options are considered inadequate. (1, 5.1)

-----  
**DOSAGE AND ADMINISTRATION**

The recommended dose is 150 mg of medroxyprogesterone acetate injectable suspension every 3 months (13 weeks) administered by deep, intramuscular (IM) injection in the gluteal or deltoid muscle. (2.1)

-----  
**DOSAGE FORMS AND STRENGTHS**

- Vials containing sterile aqueous suspension: 150 mg per mL (3)

-----  
**CONTRAINDICATIONS**

- Known or suspected pregnancy or as a diagnostic test for pregnancy. (4)
- Active thrombophlebitis, or current or past history of thromboembolic disorders, or cerebral vascular disease. (4)
- Known or suspected malignancy of breast. (4)
- Known hypersensitivity to medroxyprogesterone acetate injectable suspension (medroxyprogesterone acetate or any of its other ingredients). (4)
- Significant liver disease. (4)
- Undiagnosed vaginal bleeding. (4)

-----  
**WARNINGS AND PRECAUTIONS**

- **Thromboembolic Disorders:** Discontinue medroxyprogesterone acetate injectable suspension in patients who develop thrombosis. (5.2)
- **Cancer Risks:** Monitor women with a strong family history of breast cancer carefully. (5.3)
- **Ectopic Pregnancy:** Consider ectopic pregnancy if a woman using medroxyprogesterone acetate injectable suspension becomes pregnant or complains of severe abdominal pain. (5.4)
- **Anaphylaxis and Anaphylactoid Reactions:** Provide emergency medical treatment. (5.5)
- **Liver Function:** Discontinue medroxyprogesterone acetate injectable suspension if jaundice or disturbances of liver function develop. (5.7)
- **Carbohydrate Metabolism:** Monitor diabetic patients carefully. (5.12)

-----  
**ADVERSE REACTIONS**

Most common adverse reactions (incidence >5%) are: menstrual irregularities (bleeding or spotting) 57%

at 12 months, 32% at 24 months, abdominal pain/discomfort 11%, weight gain >10 lbs at 24 months 38%, dizziness 6%, headache 17%, nervousness 11%, decreased libido 6%. (6.1)

**To report SUSPECTED ADVERSE REACTIONS, contact Hikma Pharmaceuticals USA Inc. at 1-877-845-0689 or FDA at 1-800-FDA-1088 or [www.fda.gov/medwatch](http://www.fda.gov/medwatch).**

#### -----**DRUG INTERACTIONS**-----

Drugs or herbal products that induce certain enzymes, including CYP3A4, may decrease the effectiveness of contraceptive drug products. Counsel patients to use a back-up method or alternative method of contraception when enzyme inducers are used with medroxyprogesterone acetate injectable suspension. (7.1)

#### -----**USE IN SPECIFIC POPULATIONS**-----

- *Nursing Mothers:* Detectable amounts of drug have been identified in the milk of mothers receiving medroxyprogesterone acetate injectable suspension. (8.3)
- *Pediatric Patients:* Medroxyprogesterone acetate injectable suspension is not indicated before menarche. (8.4)

**See 17 for PATIENT COUNSELING INFORMATION and FDA-approved patient labeling.**

**Revised: 1/2023**

---

## **FULL PRESCRIBING INFORMATION: CONTENTS\***

### **WARNING: LOSS OF BONE MINERAL DENSITY**

#### **1 INDICATIONS AND USAGE**

#### **2 DOSAGE AND ADMINISTRATION**

2.1 Prevention of Pregnancy

2.2 Switching From Other Methods of Contraception

#### **3 DOSAGE FORMS AND STRENGTHS**

#### **4 CONTRAINDICATIONS**

#### **5 WARNINGS AND PRECAUTIONS**

5.1 Loss of Bone Mineral Density

5.2 Thromboembolic Disorders

5.3 Cancer Risks

5.4 Ectopic Pregnancy

5.5 Anaphylaxis and Anaphylactoid Reaction

5.6 Injection Site Reactions

5.7 Liver Function

5.8 Convulsions

5.9 Depression

5.10 Bleeding Irregularities

5.11 Weight Gain

5.12 Carbohydrate Metabolism

5.13 Lactation

5.14 Fluid Retention

5.15 Return of Fertility

5.16 Sexually Transmitted Diseases

5.17 Pregnancy

5.18 Monitoring

5.19 Interference With Laboratory Tests

#### **6 ADVERSE REACTIONS**

6.1 Clinical Trials Experience

6.2 Post-Marketing Experience

#### **7 DRUG INTERACTIONS**

7.1 Changes in Contraceptive Effectiveness Associated With Co-Administration of Other Products

7.2 Laboratory Test Interactions

#### **8 USE IN SPECIFIC POPULATIONS**

8.1 Pregnancy

8.3 Nursing Mothers

8.4 Pediatric Use

8.5 Geriatric Use

8.6 Renal Impairment

8.7 Hepatic Impairment

## 11 DESCRIPTION

## 12 CLINICAL PHARMACOLOGY

- 12.1 Mechanism of Action
- 12.2 Pharmacodynamics
- 12.3 Pharmacokinetics

## 13 NONCLINICAL TOXICOLOGY

- 13.1 Carcinogenesis, Mutagenesis, Impairment of Fertility

## 14 CLINICAL STUDIES

- 14.1 Contraception
- 14.2 Bone Mineral Density Changes in Adult Women Treated with Medroxyprogesterone Acetate Injectable Suspension
- 14.3 Bone Mineral Density Changes in Adolescent Females (12 to 18 Years of Age) Treated with Medroxyprogesterone Acetate Injectable Suspension
- 14.4 Bone Fracture Incidence in Women Treated with Medroxyprogesterone Acetate Injectable Suspension

## 15 REFERENCES

## 16 HOW SUPPLIED/STORAGE AND HANDLING

## 17 PATIENT COUNSELING INFORMATION

\* Sections or subsections omitted from the full prescribing information are not listed.

---

## FULL PRESCRIBING INFORMATION

### WARNING: LOSS OF BONE MINERAL DENSITY

- **Women who use medroxyprogesterone acetate injectable suspension may lose significant bone mineral density. Bone loss is greater with increasing duration of use and may not be completely reversible [see Warnings and Precautions (5.1)].**
- **It is unknown if use of medroxyprogesterone acetate injectable suspension during adolescence or early adulthood, a critical period of bone accretion, will reduce peak bone mass and increase the risk for osteoporotic fracture in later life [see Warnings and Precautions (5.1)].**
- **Medroxyprogesterone acetate injectable suspension is not recommended as a long-term (i.e., longer than 2 years) birth control method unless other options are considered inadequate [see Indications and Usage (1) and Warnings and Precautions (5.1)].**

## 1 INDICATIONS AND USAGE

Medroxyprogesterone acetate injectable suspension is indicated for use by females of reproductive potential to prevent pregnancy.

### Limitations of Use:

The use of medroxyprogesterone acetate injectable suspension is not recommended as a long-term (i.e., longer than 2 years) birth control method unless other options are considered inadequate [see Dosage and Administration (2.1) and Warnings and Precautions (5.1)].

## 2 DOSAGE AND ADMINISTRATION

### 2.1 Prevention of Pregnancy

The 1 mL vial of medroxyprogesterone acetate injectable suspension should be vigorously shaken just before use to ensure that the dose being administered represents a uniform suspension.

The recommended dose is 150 mg of medroxyprogesterone acetate injectable suspension every 3 months (13 weeks) administered by deep intramuscular (IM) injection using strict aseptic technique in the gluteal or deltoid muscle, rotating the sites with every injection. As with any IM injection, to avoid an inadvertent subcutaneous injection, body habitus should be assessed prior to each injection to determine if a longer needle is necessary particularly for gluteal IM injection.

Use for longer than 2 years is not recommended (unless other birth control methods are considered inadequate) due to the impact of long-term medroxyprogesterone acetate injectable suspension treatment on bone mineral density (BMD) [see *Warnings and Precautions (5.1)*]. Dosage does not need to be adjusted for body weight [see *Clinical Studies (14.1)*].

To ensure the patient is not pregnant at the time of the first injection, the first injection should be given ONLY during the first 5 days of a normal menstrual period; ONLY within the first 5-days postpartum if not breast-feeding; and if exclusively breast-feeding, ONLY at the sixth postpartum week. If the time interval between injections is greater than 13 weeks, the physician should determine that the patient is not pregnant before administering the drug. The efficacy of medroxyprogesterone acetate injectable suspension depends on adherence to the dosage schedule of administration.

## **2.2 Switching From Other Methods of Contraception**

When switching from other contraceptive methods, medroxyprogesterone acetate injectable suspension should be given in a manner that ensures continuous contraceptive coverage based upon the mechanism of action of both methods, (e.g., patients switching from oral contraceptives should have their first injection of medroxyprogesterone acetate injectable suspension on the day after the last active tablet or at the latest, on the day following the final inactive tablet).

## **3 DOSAGE FORMS AND STRENGTHS**

Sterile Aqueous suspension: 150mg/ml

## **4 CONTRAINDICATIONS**

The use of medroxyprogesterone acetate injectable suspension is contraindicated in the following conditions:

- Known or suspected pregnancy or as a diagnostic test for pregnancy.
- Active thrombophlebitis, or current or past history of thromboembolic disorders, or cerebral vascular disease [see *Warnings and Precautions (5.2)*].
- Known or suspected malignancy of breast [see *Warnings and Precautions (5.3)*].
- Known hypersensitivity to medroxyprogesterone acetate injectable suspension or any of its other ingredients [see *Warnings and Precautions (5.5)*].
- Significant liver disease [see *Warnings and Precautions (5.7)*].
- Undiagnosed vaginal bleeding [see *Warnings and Precautions (5.10)*].

## **5 WARNINGS AND PRECAUTIONS**

### **5.1 Loss of Bone Mineral Density**

Use of medroxyprogesterone acetate injectable suspension reduces serum estrogen levels and is associated with significant loss of bone mineral density (BMD). This loss of BMD is of particular concern during adolescence and early adulthood, a critical period of bone accretion. It is unknown if use of medroxyprogesterone acetate injectable suspension by younger women will reduce peak bone mass and increase the risk for osteoporotic fracture in later life.

A study to assess the reversibility of loss of BMD in adolescents was conducted with medroxyprogesterone acetate injectable suspension. After discontinuing medroxyprogesterone acetate injectable suspension in these adolescents, mean BMD

loss at the total hip and femoral neck did not fully recover by 5 years (60 months) post-treatment in the sub-group of adolescents who were treated for more than 2 years [see *Clinical Studies (14.3)*]. Similarly, in adults, there was only partial recovery of mean BMD at the total hip, femoral neck, and lumbar spine towards baseline by 2 years post-treatment [see *Clinical Studies (14.2)*].

The use of medroxyprogesterone acetate injectable suspension is not recommended as a long-term (i.e., longer than 2 years) birth control method unless other options are considered inadequate. BMD should be evaluated when a woman needs to continue to use medroxyprogesterone acetate injectable suspension long-term. In adolescents, interpretation of BMD results should take into account patient age and skeletal maturity.

Other birth control methods should be considered in the risk/benefit analysis for the use of medroxyprogesterone acetate injectable suspension in women with osteoporosis risk factors. Medroxyprogesterone acetate injectable suspension can pose an additional risk in patients with risk factors for osteoporosis (e.g., metabolic bone disease, chronic alcohol and/or tobacco use, anorexia nervosa, strong family history of osteoporosis or chronic use of drugs that can reduce bone mass such as anticonvulsants or corticosteroids).

## 5.2 Thromboembolic Disorders

There have been reports of serious thrombotic events in women using medroxyprogesterone acetate (150 mg). However, medroxyprogesterone acetate injectable suspension has not been causally associated with the induction of thrombotic or thromboembolic disorders. Any patient who develops thrombosis while undergoing therapy with medroxyprogesterone acetate injectable suspension should discontinue treatment unless she has no other acceptable options for birth control.

Do not re-administer medroxyprogesterone acetate injectable suspension pending examination if there is a sudden partial or complete loss of vision or if there is a sudden onset of proptosis, diplopia, or migraine. Do not re-administer if examination reveals papilledema or retinal vascular lesions.

## 5.3 Cancer Risks

### *Breast Cancer*

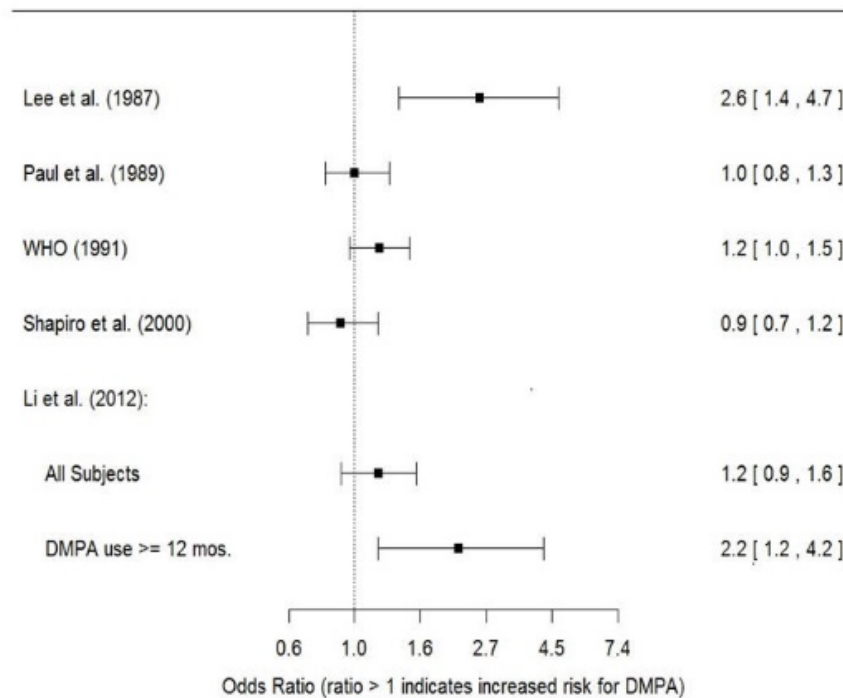
Women who have or have had a history of breast cancer should not use hormonal contraceptives, including medroxyprogesterone acetate injectable suspension, because breast cancer may be hormonally sensitive [see *Contraindications (4)*]. Women with a strong family history of breast cancer should be monitored with particular care.

The results of five large case-control studies<sup>1, 2</sup> assessing the association between depo-medroxyprogesterone acetate (DMPA) use and the risk of breast cancer are summarized in Figure 1. Three of the studies suggest a slightly increased risk of breast cancer in the overall population of users; these increased risks were statistically significant in one study. One recent US study<sup>1</sup> evaluated the recency and duration of use and found a statistically significantly increased risk of breast cancer in recent users (defined as last use within the past five years) who used DMPA for 12 months or longer; this is consistent with results of a previous study<sup>2</sup>.

### **Figure 1 Risk estimates for breast cancer in DMPA users**

---

Odds Ratio [95% confidence interval] displayed on logarithmic scale



Odds ratio estimates were adjusted for the following covariates:

Lee et al. (1987): age, parity, and socioeconomic status.

Paul et al. (1989): age, parity, ethnic group, and year of interview.

WHO (1991): age, center, and age at first live birth.

Shapiro et al. (2000): age, ethnic group, socioeconomic status, and any combined estrogen/progestogen oral contraceptive use.

Li et al. (2012): age, year, BMI, duration of OC use, number of full-term pregnancies, family history of breast cancer, and history of screening mammography.

Based on the published SEER-18 2011 incidence rate (age-adjusted to the 2000 US Standard Population) of breast cancer for US women, all races, age 20 to 49 years, a doubling of risk would increase the incidence of breast cancer in women who use medroxyprogesterone acetate injectable suspension from about 72 to about 144 cases per 100,000 women.

#### Cervical Cancer

A statistically nonsignificant increase in RR estimates of invasive squamous-cell cervical cancer has been associated with the use of medroxyprogesterone acetate injectable suspension in women who were first exposed before the age of 35 years (RR 1.22 to 1.28 and 95% CI 0.93 to 1.70). The overall, nonsignificant relative rate of invasive squamous-cell cervical cancer in women who ever used medroxyprogesterone acetate injectable suspension was estimated to be 1.11 (95% CI 0.96 to 1.29). No trends in risk with duration of use or times since initial or most recent exposure were observed.

#### Other Cancers

Long-term case-controlled surveillance of users of medroxyprogesterone acetate injectable suspension found no overall increased risk of ovarian or liver cancer.

### 5.4 Ectopic Pregnancy

Be alert to the possibility of an ectopic pregnancy among women using medroxyprogesterone acetate injectable suspension who become pregnant or complain of severe abdominal pain.

## **5.5 Anaphylaxis and Anaphylactoid Reaction**

Anaphylaxis and anaphylactoid reaction have been reported with the use of medroxyprogesterone acetate injectable suspension. Institute emergency medical treatment if an anaphylactic reaction occurs.

## **5.6 Injection Site Reactions**

Injection site reactions have been reported with use of medroxyprogesterone acetate injectable suspension [see *Adverse Reactions (6.2)*]. Persistent injection site reactions may occur after administration of medroxyprogesterone acetate injectable suspension due to inadvertent subcutaneous administration or release of the drug into the subcutaneous space while removing the needle [see *Dosage and Administration (2.1)*].

## **5.7 Liver Function**

Discontinue medroxyprogesterone acetate injectable suspension use if jaundice or acute or chronic disturbances of liver function develop. Do not resume use until markers of liver function return to normal and medroxyprogesterone acetate injectable suspension causation has been excluded.

## **5.8 Convulsions**

There have been a few reported cases of convulsions in patients who were treated with medroxyprogesterone acetate injectable suspension. Association with drug use or pre-existing conditions is not clear.

## **5.9 Depression**

Monitor patients who have a history of depression and do not re-administer medroxyprogesterone acetate injectable suspension if depression recurs.

## **5.10 Bleeding Irregularities**

Most women using medroxyprogesterone acetate injectable suspension experience disruption of menstrual bleeding patterns. Altered menstrual bleeding patterns include amenorrhea, irregular or unpredictable bleeding or spotting, prolonged spotting or bleeding, and heavy bleeding. Rule out the possibility of organic pathology if abnormal bleeding persists or is severe, and institute appropriate treatment.

As women continue using medroxyprogesterone acetate injectable suspension, fewer experience irregular bleeding and more experience amenorrhea. In clinical studies of medroxyprogesterone acetate injectable suspension, by month 12 amenorrhea was reported by 55% of women, and by month 24, amenorrhea was reported by 68% of women using medroxyprogesterone acetate injectable suspension.

## **5.11 Weight Gain**

Women tend to gain weight while on therapy with medroxyprogesterone acetate injectable suspension. From an initial average body weight of 136 lb, women who completed 1 year of therapy with medroxyprogesterone acetate injectable suspension gained an average of 5.4 lb. Women who completed 2 years of therapy gained an average of 8.1 lb. Women who completed 4 years gained an average of 13.8 lb. Women who completed 6 years gained an average of 16.5 lb. Two percent of women withdrew from a large-scale clinical trial because of excessive weight gain.

## **5.12 Carbohydrate Metabolism**

A decrease in glucose tolerance has been observed in some patients on medroxyprogesterone acetate injectable suspension treatment. Monitor diabetic patients carefully while receiving medroxyprogesterone acetate injectable suspension.

## **5.13 Lactation**

Detectable amounts of drug have been identified in the milk of mothers receiving medroxyprogesterone acetate injectable suspension. In nursing mothers treated with

medroxyprogesterone acetate injectable suspension, milk composition, quality, and amount are not adversely affected. Neonates and infants exposed to medroxyprogesterone from breast milk have been studied for developmental and behavioral effects through puberty. No adverse effects have been noted.

#### **5.14 Fluid Retention**

Because progestational drugs including medroxyprogesterone acetate injectable suspension may cause some degree of fluid retention, monitor patients with conditions that might be influenced by this condition, such as epilepsy, migraine, asthma, and cardiac or renal dysfunction.

#### **5.15 Return of Fertility**

Return to ovulation and fertility is likely to be delayed after stopping medroxyprogesterone acetate injectable suspension. In a large US study of women who discontinued use of medroxyprogesterone acetate injectable suspension to become pregnant, data are available for 61% of them. Of the 188 women who discontinued the study to become pregnant, 114 became pregnant. Based on Life-Table analysis of these data, it is expected that 68% of women who do become pregnant may conceive within 12 months, 83% may conceive within 15 months, and 93% may conceive within 18 months from the last injection. The median time to conception for those who do conceive is 10 months following the last injection with a range of 4 to 31 months, and is unrelated to the duration of use. No data are available for 39% of the patients who discontinued medroxyprogesterone acetate injectable suspension to become pregnant and who were lost to follow-up or changed their mind.

#### **5.16 Sexually Transmitted Diseases**

Patients should be counseled that medroxyprogesterone acetate injectable suspension does not protect against HIV infection (AIDS) and other sexually transmitted diseases.

#### **5.17 Pregnancy**

Although medroxyprogesterone acetate injectable suspension should not be used during pregnancy, there appears to be little or no increased risk of birth defects in women who have inadvertently been exposed to medroxyprogesterone acetate injections in early pregnancy. Neonates exposed to medroxyprogesterone acetate in-utero and followed to adolescence showed no evidence of any adverse effects on their health including their physical, intellectual, sexual or social development.

#### **5.18 Monitoring**

A woman who is taking hormonal contraceptive should have a yearly visit with her healthcare provider for a blood pressure check and for other indicated healthcare.

#### **5.19 Interference With Laboratory Tests**

The use of medroxyprogesterone acetate injectable suspension may change the results of some laboratory tests, such as coagulation factors, lipids, glucose tolerance, and binding proteins. [See *Drug Interactions (7.2).*]

### **6 ADVERSE REACTIONS**

The following important adverse reactions observed with the use of medroxyprogesterone acetate injectable suspension are discussed in greater detail in the *Warnings and Precautions* section (5):

- Loss of Bone Mineral Density [see *Warnings and Precautions (5.1)*]
- Thromboembolic disease [see *Warnings and Precautions (5.2)*]
- Breast Cancer [see *Warnings and Precautions (5.3)*]
- Anaphylaxis and Anaphylactoid Reactions [see *Warnings and Precautions (5.5)*]
- Bleeding Irregularities [see *Warnings and Precautions (5.10)*]
- Weight Gain [see *Warnings and Precautions (5.11)*]



## 6.1 Clinical Trials Experience

Because clinical trials are conducted under widely varying conditions, adverse reaction rates observed in the clinical studies of a drug cannot be directly compared to rates in the clinical trials of another drug and may not reflect the rates observed in practice.

In the two clinical trials with medroxyprogesterone acetate injectable suspension, over 3,900 women, who were treated for up to 7 years, reported the following adverse reactions, which may or may not be related to the use of medroxyprogesterone acetate injectable suspension. The population studied ranges in age from 15 to 51 years, of which 46% were White, 50% Non-White, and 4.9% Unknown race. The patients received 150 mg medroxyprogesterone acetate injectable suspension every 3-months (90 days). The median study duration was 13 months with a range of 1-84 months. Fifty eight percent of patients remained in the study after 13 months and 34% after 24 months.

**Table 1 Adverse Reactions that Were Reported by More than 5% of Subjects**

<b>Body System*</b>	<b>Adverse Reactions [Incidence (%)]</b>
<b>Body as a Whole</b>	Headache (16.5%) Abdominal pain/discomfort (11.2%)
<b>Metabolic/Nutritional</b>	Increased weight > 10lbs at 24 months (37.7%)
<b>Nervous</b>	Nervousness (10.8%) Dizziness (5.6%) Libido decreased (5.5%)
<b>Urogenital</b>	Menstrual irregularities: (bleeding (57.3% at 12 months, 32.1% at 24 months) amenorrhea (55% at 12 months, 68% at 24 months)

\* Body System represented from COSTART medical dictionary.

**Table 2 Adverse Reactions that Were Reported by between 1 and 5% of Subjects**

<b>Body System*</b>	<b>Adverse Reactions [Incidence (%)]</b>
<b>Body as a Whole</b>	Asthenia/fatigue (4.2%) Backache (2.2%) Dysmenorrhea (1.7%) Hot flashes (1.0%)
<b>Digestive</b>	Nausea (3.3%) Bloating (2.3%)
<b>Metabolic/Nutritional</b>	Edema (2.2%)
<b>Musculoskeletal</b>	Leg cramps (3.7%) Arthralgia (1.0%)
<b>Nervous</b>	Depression (1.5%) Insomnia (1.0%)
<b>Skin and Appendages</b>	Acne (1.2%) No hair growth/alopecia (1.1%) Rash (1.1%)
<b>Urogenital</b>	Leukorrhea (2.9%) Breast pain (2.8%) Vaginitis (1.2%)

\* Body System represented from COSTART medical dictionary.

**Adverse reactions leading to study discontinuation in  $\geq 2\%$  of subjects:**  
bleeding (8.2%), amenorrhea (2.1%), weight gain (2.0%)

## 6.2 Post-Marketing Experience

The following adverse reactions have been identified during post approval use of

medroxyprogesterone acetate injectable suspension. Because these reactions are reported voluntarily from a population of uncertain size, it is not always possible to reliably estimate their frequency or establish a causal relationship to drug exposure.

There have been cases of osteoporosis including osteoporotic fractures reported post-marketing in patients taking medroxyprogesterone acetate injectable suspension.

**Table 3 Adverse Reactions Reported during Post-Marketing Experience**

<b>Body System*</b>	<b>Adverse Reactions</b>
<b>Body as a Whole</b>	Chest pain, Allergic reactions including angioedema, Fever, Injection site abscess <sup>†</sup> , Injection site infection <sup>†</sup> , Injection site nodule/lump, Injection site pain/tenderness, Injection site persistent atrophy/indentation/dimpling, Injection-site reaction, Lipodystrophy acquired, Chills, Axillary swelling
<b>Cardiovascular</b>	Syncope, Tachycardia, Thrombophlebitis, Deep vein thrombosis, Pulmonary embolus, Varicose veins
<b>Digestive</b>	Changes in appetite, Gastrointestinal disturbances, Jaundice, Excessive thirst, Rectal bleeding
<b>Hematologic and Lymphatic</b>	Anemia, Blood dyscrasia
<b>Musculoskeletal</b>	Osteoporosis
<b>Neoplasms</b>	Cervical cancer, Breast cancer
<b>Nervous</b>	Paralysis, Facial palsy, Paresthesia, Drowsiness
<b>Respiratory</b>	Dyspnea and asthma, Hoarseness
<b>Skin and Appendages</b>	Hirsutism, Excessive sweating and body odor, Dry skin, Scleroderma
<b>Urogenital</b>	Lack of return to fertility, Unexpected pregnancy, Prevention of lactation, Changes in breast size, Breast lumps or nipple bleeding, Galactorrhea, Melasma, Chloasma, Increased libido, Uterine hyperplasia, Genitourinary infections, Vaginal cysts, Dyspareunia

\* Body System represented from COSTART medical dictionary.

† Injection site abscess and injection site infections have been reported; therefore strict aseptic injection technique should be followed when administering medroxyprogesterone acetate injectable suspension in order to avoid injection site infections [see *Dosage and Administration* (2.1)].

## 7 DRUG INTERACTIONS

### 7.1 Changes in Contraceptive Effectiveness Associated With Co-Administration of Other Products

If a woman on hormonal contraceptives takes a drug or herbal product that induces enzymes, including CYP3A4, that metabolize contraceptive hormones, counsel her to use additional contraception or a different method of contraception. Drugs or herbal products that induce such enzymes may decrease the plasma concentrations of contraceptive hormones, and may decrease the effectiveness of hormonal contraceptives. Some drugs or herbal products that may decrease the effectiveness of hormonal contraceptives include:

- barbiturates

- bosentan
- carbamazepine
- felbamate
- griseofulvin
- oxcarbazepine
- phenytoin
- rifampin
- St. John's wort
- topiramate

HIV protease inhibitors and non-nucleoside reverse transcriptase inhibitors: Significant changes (increase or decrease) in the plasma levels of progestin have been noted in some cases of co-administration of HIV protease inhibitors. Significant changes (increase or decrease) in the plasma levels of the progestin have been noted in some cases of co-administration with non-nucleoside reverse transcriptase inhibitors.

Antibiotics: There have been reports of pregnancy while taking hormonal contraceptives and antibiotics, but clinical pharmacokinetic studies have not shown consistent effects of antibiotics on plasma concentrations of synthetic steroids.

Consult the labeling of all concurrently-used drugs to obtain further information about interactions with hormonal contraceptives or the potential for enzyme alterations.

## 7.2 Laboratory Test Interactions

The pathologist should be advised of progestin therapy when relevant specimens are submitted.

The following laboratory tests may be affected by progestins including medroxyprogesterone acetate injectable suspension:

- Plasma and urinary steroid levels are decreased (e.g., progesterone, estradiol, pregnanediol, testosterone, cortisol).
- Gonadotropin levels are decreased.
- Sex-hormone-binding-globulin concentrations are decreased.
- Protein-bound iodine and butanol extractable protein-bound iodine may increase. T<sub>3</sub>-uptake values may decrease.
- Coagulation test values for prothrombin (Factor II), and Factors VII, VIII, IX, and X may increase.
- Sulfobromophthalein and other liver function test values may be increased.
- The effects of medroxyprogesterone acetate on lipid metabolism are inconsistent. Both increases and decreases in total cholesterol, triglycerides, low-density lipoprotein (LDL) cholesterol, and high-density lipoprotein (HDL) cholesterol have been observed in studies.

## 8 USE IN SPECIFIC POPULATIONS

### 8.1 Pregnancy

Medroxyprogesterone acetate injectable suspension should not be administered during pregnancy. [See *Contraindications and Warnings and Precautions (5.17).*]

### 8.3 Nursing Mothers

Detectable amounts of drug have been identified in the milk of mothers receiving medroxyprogesterone acetate injectable suspension. [See *Warnings and Precautions (5.13).*]

### 8.4 Pediatric Use

Medroxyprogesterone acetate injectable suspension is not indicated before menarche. Use of medroxyprogesterone acetate injectable suspension is associated with significant loss of BMD. This loss of BMD is of particular concern during adolescence and early adulthood, a critical period of bone accretion. In adolescents, interpretation of BMD

results should take into account patient age and skeletal maturity. It is unknown if use of medroxyprogesterone acetate injectable suspension by younger women will reduce peak bone mass and increase the risk of osteoporotic fractures in later life. Other than concerns about loss of BMD, the safety and effectiveness are expected to be the same for postmenarchal adolescents and adult women.

### 8.5 Geriatric Use

This product has not been studied in post-menopausal women and is not indicated in this population.

### 8.6 Renal Impairment

The effect of renal impairment on medroxyprogesterone acetate injectable suspension pharmacokinetics has not been studied.

### 8.7 Hepatic Impairment

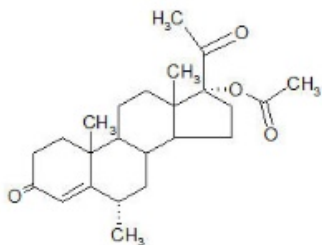
The effect of hepatic impairment on medroxyprogesterone acetate injectable suspension pharmacokinetics has not been studied. Medroxyprogesterone acetate injectable suspension should not be used by women with significant liver disease and should be discontinued if jaundice or disturbances of liver function occur. [See *Contraindications (4) and Warnings and Precautions (5.7).*]

## 11 DESCRIPTION

Medroxyprogesterone acetate injectable suspension contains medroxyprogesterone acetate, a derivative of progesterone, as its active ingredient. Medroxyprogesterone acetate is active by the parenteral and oral routes of administration. It is a white to off-white; odorless crystalline powder that is stable in air and that melts between 200°C and 210°C. It is freely soluble in chloroform, soluble in acetone and dioxane, sparingly soluble in alcohol and methanol, slightly soluble in ether, and insoluble in water.

The chemical name for medroxyprogesterone acetate is pregn-4-ene-3, 20-dione, 17-(acetyloxy)-6-methyl-, (6 $\alpha$ -).

The structural formula is as follows:



Medroxyprogesterone acetate injectable suspension for IM injection is available in vials, each containing 1 mL of medroxyprogesterone acetate sterile aqueous suspension 150 mg/mL.

---

For medroxyprogesterone acetate injectable suspension vials, each mL of sterile aqueous suspension contains:

Medroxyprogesterone acetate	150 mg
Polyethylene glycol 3350	28.9 mg
Polysorbate 80	2.41 mg

Sodium chloride	8.68 mg
Methylparaben	1.37 mg
Propylparaben	0.150 mg
Water for injection	quantity sufficient

When necessary, pH is adjusted with sodium hydroxide or hydrochloric acid, or both.

---

## **12 CLINICAL PHARMACOLOGY**

### **12.1 Mechanism of Action**

Medroxyprogesterone acetate injectable suspension inhibits the secretion of gonadotropins which primarily prevents follicular maturation and ovulation and causes thickening of cervical mucus. These actions contribute to its contraceptive effect.

### **12.2 Pharmacodynamics**

No specific pharmacodynamic studies were conducted with medroxyprogesterone acetate injectable suspension.

### **12.3 Pharmacokinetics**

#### Absorption

Following a single 150 mg IM dose of medroxyprogesterone acetate injectable suspension in eight women between the ages of 28 and 36 years old, medroxyprogesterone acetate concentrations, measured by an extracted radioimmunoassay procedure, increase for approximately 3 weeks to reach peak plasma concentrations of 1 to 7 ng/mL.

#### Distribution

Plasma protein binding of MPA averages 86%. MPA binding occurs primarily to serum albumin. No binding of MPA occurs with sex-hormone-binding globulin (SHBG).

#### Metabolism

MPA is extensively metabolized in the liver by P450 enzymes. Its metabolism primarily involves ring A and/or side-chain reduction, loss of the acetyl group, hydroxylation in the 2-, 6-, and 21-positions or a combination of these positions, resulting in more than 10 metabolites.

#### Excretion

The concentrations of medroxyprogesterone acetate decrease exponentially until they become undetectable (<100 pg/mL) between 120 to 200 days following injection. Using an unextracted radioimmunoassay procedure for the assay of medroxyprogesterone acetate in serum, the apparent half-life for medroxyprogesterone acetate following IM administration of medroxyprogesterone acetate injectable suspension is approximately 50 days. Most medroxyprogesterone acetate metabolites are excreted in the urine as glucuronide conjugates with only minor amounts excreted as sulfates.

#### Specific Populations

The effect of hepatic and/or renal impairment on the pharmacokinetics of medroxyprogesterone acetate injectable suspension is unknown.

## **13 NONCLINICAL TOXICOLOGY**

### 13.1 Carcinogenesis, Mutagenesis, Impairment of Fertility

[See Warnings and Precautions, (5.3, 5.15, and 5.17).]

## 14 CLINICAL STUDIES

### 14.1 Contraception

In five clinical studies using medroxyprogesterone acetate injectable suspension, the 12-month failure rate for the group of women treated with medroxyprogesterone acetate injectable suspension was zero (no pregnancies reported) to 0.7 by Life-Table method. The effectiveness of medroxyprogesterone acetate injectable suspension is dependent on the patient returning every 3 months (13 weeks) for reinjection.

### 14.2 Bone Mineral Density Changes in Adult Women Treated with Medroxyprogesterone Acetate Injectable Suspension

In a controlled, clinical study, adult women using medroxyprogesterone acetate (150mg) for up to 5 years showed spine and hip bone mineral density (BMD) mean decreases of 5-6%, compared to no significant change in BMD in the control group. The decline in BMD was more pronounced during the first two years of use, with smaller declines in subsequent years. Mean changes in lumbar spine BMD of -2.86%, -4.11%, -4.89%, -4.93% and -5.38% after 1, 2, 3, 4, and 5 years, respectively, were observed. Mean decreases in BMD of the total hip and femoral neck were similar.

After stopping use of medroxyprogesterone acetate injectable suspension, there was partial recovery of BMD toward baseline values during the 2-year post-therapy period. Longer duration of treatment was associated with less complete recovery during this 2-year period following the last injection. Table 4 shows the change in BMD in women after 5 years of treatment with medroxyprogesterone acetate injectable suspension and in women in a control group, as well as the extent of recovery of BMD for the subset of the women for whom 2-year post treatment data were available.

**Table 4. Mean Percent Change from Baseline in BMD in Adults by Skeletal Site and Cohort (5 Years of Treatment and 2 Years of Follow-Up)**

Time in Study	Spine		Total Hip		Femoral Neck	
	Medroxyprogesterone Acetate Injectable Suspension*	Control†	Medroxyprogesterone Acetate Injectable Suspension*	Control†	Medroxyprogesterone Acetate Injectable Suspension*	Control†
5 years	-5.38% n=33	0.43% n=105	-5.16% n=21	0.19% n=65	-6.12% n=34	-0.27% n=106
7 years	-3.13% n=12	0.53% n=60	-1.34% n=7	0.94% n=39	-5.38% n=13	-0.11% n=63

\* The treatment group consisted of women who received medroxyprogesterone acetate injectable suspension for 5 years and were then followed for 2 years post-use (total time in study of 7 years).

† The control group consisted of women who did not use hormonal contraception and were followed for 7 years.

### 14.3 Bone Mineral Density Changes in Adolescent Females (12 to 18 Years of Age) Treated with Medroxyprogesterone Acetate Injectable Suspension

The impact of medroxyprogesterone acetate (150 mg) use for up to 240 weeks (4.6 years) was evaluated in an open-label non-randomized clinical study in 389 adolescent females (12 to 18 years of age). Use of medroxyprogesterone acetate injectable suspension was associated with a significant decline from baseline in BMD.

Partway through the trial, drug administration was stopped (at 120 weeks). The mean number of injections per medroxyprogesterone acetate injectable suspension user was 9.3. Table 5 summarizes the study findings. The decline in BMD at total hip and femoral neck was greater with longer duration of use. The mean decrease in BMD at 240 weeks was more pronounced at total hip (-6.4%) and femoral neck (-5.4%) compared to lumbar spine (-2.1%).

Adolescents in the untreated cohort had an increase in BMD during the period of growth following menarche. However, the two cohorts were not matched at baseline for age, gynecologic age, race, BMD and other factors that influence the rate of acquisition of BMD.

**Table 5. BMD Mean Percent Change from Baseline in Adolescents Receiving ≥4 Injections per 60-week Period, by Skeletal Site and Cohort**

Duration of Treatment	Medroxyprogesterone Acetate Injectable Suspension (150 mg IM)		Unmatched, Untreated Cohort	
	N	Mean % Change	N	Mean % Change
<b>Total Hip BMD</b>				
Week 60 (1.2 years)	113	-2.75	166	1.22
Week 120 (2.3 years)	73	-5.40	109	2.19
Week 240 (4.6 years)	28	-6.40	84	1.71
<b>Femoral Neck BMD</b>				
Week 60	113	-2.96	166	1.75
Week 120	73	-5.30	108	2.83
Week 240	28	-5.40	84	1.94
<b>Lumbar Spine BMD</b>				
Week 60	114	-2.47	167	3.39
Week 120	73	-2.74	109	5.28
Week 240	27	-2.11	84	6.40

**BMD Recovery Post-Treatment in Adolescents**

Longer duration of treatment and smoking were associated with less recovery of BMD following the last injection of medroxyprogesterone acetate injectable suspension. Table 6 shows the extent of recovery of BMD up to 60 months post-treatment for adolescents who received medroxyprogesterone acetate injectable suspension for two years or less compared to more than two years. Post-treatment follow-up showed that, in women treated for more than two years, only lumbar spine BMD recovered to baseline levels after treatment was discontinued. Adolescents treated with medroxyprogesterone acetate injectable suspension for more than two years did not recover to their baseline BMD level at femoral neck and total hip even up to 60 months post-treatment. Adolescents in the untreated cohort gained BMD throughout the trial period (data not shown) [see Warnings and Precautions (5.1)].

**Table 6: BMD Recovery (Months Post-Treatment) in Adolescents by Years of Medroxyprogesterone Acetate Injectable Suspension Use (2 Years or Less vs. More than 2 Years)**

Duration of Treatment	2 years or less		More than 2 years	
	N	Mean % Change from baseline	N	Mean % Change from baseline
<b>Total Hip BMD</b>				
<b>End of Treatment</b>	49	-1.5%	49	-6.2%
12 M post-treatment	33	-1.4%	24	-4.6%
24 M post-treatment	18	0.3%	17	-3.6%

treatment				
36 M post-treatment	12	2.1%	11	-4.6%
48 M post-treatment	10	1.3%	9	-2.5%
60 M post-treatment	3	0.2%	2	-1.0%
<b>Femoral Neck BMD</b>				
<b>End of Treatment</b>	49	-1.6%	49	-5.8%
12 M post-treatment	33	-1.4%	24	-4.3%
24 M post-treatment	18	0.5%	17	-3.8%
36 M post-treatment	12	1.2%	11	-3.8%
48 M post-treatment	10	2.0%	9	-1.7%
60 M post-treatment	3	1.0%	2	-1.9%
<b>Lumbar Spine BMD</b>				
<b>End of Treatment</b>	49	-0.9%	49	-3.5%
12 M post-treatment	33	0.4%	23	-1.1%
24 M post-treatment	18	2.6%	17	1.9%
36 M post-treatment	12	2.4%	11	0.6%
48 M post-treatment	10	6.5%	9	3.5%
60 M post-treatment	3	6.2%	2	5.7%

#### **14.4 Bone Fracture Incidence in Women Treated with Medroxyprogesterone Acetate Injectable Suspension**

A retrospective cohort study to assess the association between medroxyprogesterone acetate injectable suspension and the incidence of bone fractures was conducted in 312,395 female contraceptive users in the UK. The incidence rates of fracture were compared between medroxyprogesterone acetate injectable suspension users and contraceptive users who had no recorded use of medroxyprogesterone acetate injectable suspension. The Incident Rate Ratio (IRR) for any fracture during the follow-up period (mean=5.5 years) was 1.41 (95% CI 1.35, 1.47). It is not known if this is due to medroxyprogesterone acetate injectable suspension use or to other related lifestyle factors that have a bearing on fracture rate.

In the study, when cumulative exposure to medroxyprogesterone acetate injectable suspension was calculated, the fracture rate in users who received fewer than 8 injections was higher than that in women who received 8 or more injections. However, it is not clear that cumulative exposure, which may include periods of intermittent use separated by periods of non-use, is a useful measure of risk, as compared to exposure measures based on continuous use.

There were very few osteoporotic fractures (fracture sites known to be related to low BMD) in the study overall, and the incidence of osteoporotic fractures was not found to be higher in medroxyprogesterone acetate injectable suspension users compared to non-users.

Importantly, this study could not determine whether use of medroxyprogesterone acetate injectable suspension has an effect on fracture rate later in life.



## 15 REFERENCES

1. Li CI, Beaber EF, Tang, MCT et al. Effect of Depo-Medroxyprogesterone Acetate on Breast Cancer Risk among Women 20 to 44 years of Age. *Cancer Research* 2012;72:2028–2035.
2. Paul C, Skegg DCG, Spears GFS. Depot medroxyprogesterone (Depo-Provera) and risk of breast cancer. *Br Med J* 1989; 299:759–62.

## 16 HOW SUPPLIED/STORAGE AND HANDLING

Medroxyprogesterone Acetate Injectable Suspension, USP is supplied in the following strength and package configuration:

Package Configuration	Strength	NDC
<b>Medroxyprogesterone Acetate Injectable Suspension, USP (medroxyprogesterone acetate sterile aqueous suspension 150 mg/mL)</b>		
One x 1 mL vial	150 mg/mL	NDC 24201-150-01
25 x 1 mL vials	150 mg/mL	NDC 24201-150-25

Vials MUST be stored upright at controlled room temperature 20° to 25°C (68° to 77°F) [see USP].

## 17 PATIENT COUNSELING INFORMATION

"See FDA-approved patient labeling (Patient Information)."

- Advise patients at the beginning of treatment that their menstrual cycle may be disrupted and that irregular and unpredictable bleeding or spotting results, and that this usually decreases to the point of amenorrhea as treatment with medroxyprogesterone acetate injectable suspension continues, without other therapy being required.
- Counsel patients about the possible increased risk of breast cancer in women who use medroxyprogesterone acetate injectable suspension [see *Warnings and Precautions* (5.3)].
- Counsel patients that this product does not protect against HIV infection (AIDS) and other sexually transmitted diseases.
- Counsel patients on Warnings and Precautions associated with use of medroxyprogesterone acetate injectable suspension.
- Counsel patients to use a back-up method or alternative method of contraception when enzyme inducers are used with medroxyprogesterone acetate injectable suspension.

This product's labeling may have been updated. For the most recent prescribing information, please visit [www.hikma.com](http://www.hikma.com).

### Manufactured for:

Hikma Pharmaceuticals USA Inc.

Berkeley Heights, NJ 07922

Made in Spain

### Patient Information

#### Medroxyprogesterone Acetate

(med ROX ee proe JES ter one AS e tate)

Injectable Suspension, USP

Read this Patient Information carefully before you decide if medroxyprogesterone acetate injectable suspension is right for you. This information does not take the place of talking with your gynecologist or other healthcare provider who specializes in women's health. If you have any questions about medroxyprogesterone acetate injectable suspension, ask your healthcare provider. You should also learn about other birth control methods to choose the one that is best for you.

### **What is the most important information I should know about medroxyprogesterone acetate injectable suspension?**

**Medroxyprogesterone acetate injectable suspension can cause serious side effects, including:**

- **Use of medroxyprogesterone acetate injectable suspension may cause you to lose calcium stored in your bone and decrease your bone mass. The longer you use medroxyprogesterone acetate injectable suspension, the greater your loss of calcium from your bones. Your bones may not recover completely when you stop using medroxyprogesterone acetate injectable suspension.**
- **If you use medroxyprogesterone acetate injectable suspension continuously for a long time (for more than 2 years), it may increase the risk of weak, porous bones (osteoporosis) that could increase the risk of broken bones, especially after menopause.**
- **You should not use medroxyprogesterone acetate injectable suspension for more than two years unless you cannot use other birth control methods.**
- **It is not known if your risk of developing osteoporosis is greater if you are a teenager or young adult when you start to use medroxyprogesterone acetate injectable suspension (see "What are the possible side effects of medroxyprogesterone acetate injectable suspension?").**

**Medroxyprogesterone acetate injectable suspension is intended to prevent pregnancy. Medroxyprogesterone acetate injectable suspension does not protect against HIV infection (AIDS) and other sexually transmitted diseases (STDs).**

### **What is medroxyprogesterone acetate injectable suspension?**

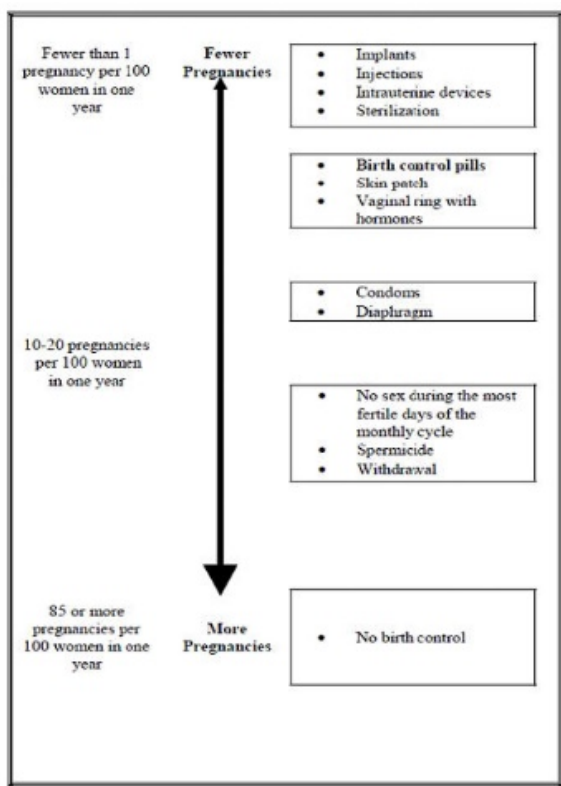
Medroxyprogesterone acetate injectable suspension is a progestin hormone birth control method that is given by injection (a shot) to prevent pregnancy.

### **How well does medroxyprogesterone acetate injectable suspension work?**

Your chance of getting pregnant depends on how well you follow the directions for taking your medroxyprogesterone acetate injectable suspension. The more carefully you follow the directions (such as returning every 3 months for your next injection), the less chance you have of getting pregnant.

In clinical studies, about 1 out of 100 women got pregnant during the first year that they used medroxyprogesterone acetate injectable suspension.

The following chart shows the chance of getting pregnant for women who use different methods of birth control. Each box on the chart contains a list of birth control methods that are similar in effectiveness. The most effective methods are at the top of the chart. The box on the bottom of the chart shows the chance of getting pregnant for women who do not use birth control and are trying to get pregnant.



### How should I take medroxyprogesterone acetate injectable suspension?

- Medroxyprogesterone acetate injectable suspension is given by your healthcare provider as a shot into your muscle (intramuscular injection). The shot is given in your buttock or upper arm 1 time every 3 months. At the end of the 3 months, you will need to return to your healthcare provider for your next injection in order to continue your protection against pregnancy.
- **To make sure that you are not pregnant before you take medroxyprogesterone acetate injectable suspension, the first injection should be given only:**
  - o during the first 5 days of a normal menstrual period, or
  - o within the first 5 days after giving birth, **if you are not breastfeeding**, or
  - o at the 6th week after giving birth, **if you are feeding your baby only breastmilk.**
- Medroxyprogesterone acetate injectable suspension may be given at other times than those listed above, but you will likely need to have a pregnancy test first to show that you are not pregnant.
- During treatment with medroxyprogesterone acetate injectable suspension, you should see your healthcare provider every year for a blood pressure check and other healthcare needs.

### Who Should Not Use Medroxyprogesterone Acetate Injectable Suspension?

Do not use medroxyprogesterone acetate injectable suspension if you:

- are pregnant or think you might be pregnant
- have bleeding from your vagina that has not been explained
- have breast cancer now or in the past, or think you have breast cancer
- have had a stroke
- ever had blood clots in your arms, legs or lungs
- have problems with your liver or liver disease
- are allergic to medroxyprogesterone acetate or any of the other ingredients in medroxyprogesterone acetate injectable suspension. See the end of this leaflet for a complete list of ingredients in medroxyprogesterone acetate injectable

suspension.

### **What should I tell my healthcare provider before taking medroxyprogesterone acetate injectable suspension?**

Before taking medroxyprogesterone acetate injectable suspension, tell your healthcare provider if you have:

- risk factors for weak bones (osteoporosis) such as bone disease, use alcohol or smoke regularly, anorexia nervosa, or a strong family history of osteoporosis
- irregular or lighter than usual menstrual periods
- breast cancer now or in the past, or think you have breast cancer
- a family history of breast cancer
- an abnormal mammogram (breast X-ray), lumps in your breasts, or bleeding from your nipples
- kidney problems
- high blood pressure
- had a stroke
- had blood clots in your arms, legs or lungs
- migraine headaches
- asthma
- epilepsy (convulsions or seizures)
- diabetes
- depression or a history of depression
- any other medical conditions

If you are breastfeeding or plan to breastfeed, medroxyprogesterone acetate injectable suspension can pass into your breast milk. Talk to your healthcare provider about the best way to feed your baby if you take medroxyprogesterone acetate injectable suspension.

Tell your healthcare provider about all of the medicines you take, including prescription and nonprescription medicines, vitamins, and herbal supplements.

Medroxyprogesterone acetate injectable suspension and certain other medicines may affect each other, causing serious side effects. Sometimes the doses of other medicines may need to be changed while you are taking medroxyprogesterone acetate injectable suspension.

Some medicines may make medroxyprogesterone acetate injectable suspension less effective at preventing pregnancy, including those listed below.

#### **Especially tell your healthcare provider if you take:**

- medicine to help you sleep
- bosentan
- medicine for seizures
- griseofulvin
- an antibiotic
- medicine for HIV (AIDS)
- St. John's wort

Know the medicines you take. Keep a list of your medicines with you to show your healthcare provider or pharmacist before you first start taking medroxyprogesterone acetate injectable suspension or when you get a new medicine.

**Follow your healthcare provider's instructions about using a back-up method of birth control if you are taking medicines that may make medroxyprogesterone acetate injectable suspension less effective.**

**What are the possible side effects of medroxyprogesterone acetate injectable suspension?**

**Medroxyprogesterone acetate injectable suspension can cause serious side effects, including:**

- Effect on the bones: See "What is the most important information I should know

about medroxyprogesterone acetate injectable suspension?".

Teenage years are the most important years to gain bone strength. The decrease in calcium in your bones is of most concern if you are a teenager or have the following problems:

- bone disease
- an eating disorder (anorexia nervosa)
- a strong family history of osteoporosis
- you take a drug that can lower the amount of calcium in your bones (drugs for epilepsy or steroid drugs)
- you drink a lot of alcohol (more than 2 drinks a day)
- you smoke

If you need a birth control method for more than 2 years, your healthcare provider may switch you to another birth control method instead of using medroxyprogesterone acetate injectable suspension. If you continue using medroxyprogesterone acetate injectable suspension, your healthcare provider may ask you to have a bone test, especially if you have other risks for weak bones. When medroxyprogesterone acetate injectable suspension is stopped, your bones may start to regain calcium. However, in a study of teenage girls who used medroxyprogesterone acetate injectable suspension for more than 2 years, their hip bones did not completely recover by 5 years after they stopped using medroxyprogesterone acetate injectable suspension. Taking calcium and Vitamin D and exercising daily may lessen the loss of calcium from your bones.

- possible increased risk of breast cancer. Women who use medroxyprogesterone acetate injectable suspension may have a slightly increased risk of breast cancer compared to non-users.
- blood clots in your arms, legs, lungs, and eyes
- stroke
- a pregnancy outside of your uterus (ectopic pregnancy). Ectopic pregnancy is a medical emergency that often requires surgery. Ectopic pregnancy can cause internal bleeding, infertility, and even death.
- allergic reactions. Severe allergic reactions have been reported in some women using medroxyprogesterone acetate injectable suspension.
- loss of vision or other eye problems
- migraine headaches
- depression
- convulsions or seizures
- liver problems

#### **Call your healthcare provider right away if you have:**

- sharp chest pain, coughing up blood, or sudden shortness of breath (indicating a possible clot in the lung)
- sudden severe headache or vomiting, dizziness or fainting, problems with your eyesight or speech, weakness, or numbness in an arm or leg (indicating a possible stroke)
- severe pain or swelling in the calf (indicating a possible clot in the leg)
- sudden blindness, partial or complete (indicating a possible clot in the blood vessels of the eye)
- unusually heavy vaginal bleeding
- severe pain or tenderness in the lower abdominal area
- persistent pain, pus, or bleeding at the injection site
- yellowing of the eyes or skin
- hives
- difficulty breathing
- swelling of the face, mouth, tongue or neck

#### **The most common side effects of medroxyprogesterone acetate injectable suspension include:**

- irregular vaginal bleeding, such as lighter or heavier menstrual bleeding, or continued spotting

- weight gain. You may experience weight gain while you are using medroxyprogesterone acetate injectable suspension. About two-thirds of the women who used medroxyprogesterone acetate injectable suspension in the clinical trials reported a weight gain of about 5 pounds during the first year of use. You may continue to gain weight after the first year. Women who used medroxyprogesterone acetate injectable suspension for 2 years gained an average of 8 pounds over those 2 years.
- abdominal pain
- headache
- weakness
- tiredness
- nervousness
- dizziness

Tell your healthcare provider if you have any side effect that bothers you or does not go away.

These are not all the possible side effects of medroxyprogesterone acetate injectable suspension. For more information, ask your healthcare provider or pharmacist.

Call your doctor for medical advice about side effects. You may report side effects to FDA at 1-800-FDA-1088.

### **What other information should I know before choosing medroxyprogesterone acetate injectable suspension?**

- **Pregnancy.** When you take medroxyprogesterone acetate injectable suspension every 3 months, your chance of getting pregnant is very low. You could miss a period or have a light period and not be pregnant. If you miss 1 or 2 periods and think you might be pregnant, see your healthcare provider as soon as possible. You should not use medroxyprogesterone acetate injectable suspension if you are pregnant. However, medroxyprogesterone acetate injectable suspension taken by accident during pregnancy does not seem to cause birth defects.
- **Nursing Mothers.** Although medroxyprogesterone acetate injectable suspension can be passed to the nursing baby in the breast milk, no harmful effects on babies have been found. Medroxyprogesterone acetate injectable suspension does not stop the breasts from producing milk, so it can be used by nursing mothers. However, to minimize the amount of medroxyprogesterone acetate injectable suspension that is passed to the baby in the first weeks after birth, you should wait until your baby is 6 weeks old before you start using medroxyprogesterone acetate injectable suspension for birth control.

### **How will medroxyprogesterone acetate injectable suspension change my periods?**

- **Change in normal menstrual cycle.** The side effect reported most frequently by women who use medroxyprogesterone acetate injectable suspension for birth controls is a change in their normal menstrual cycle. During the first year of using medroxyprogesterone acetate injectable suspension, you might have one or more of the following changes:
  - o irregular or unpredictable bleeding or spotting
  - o an increase or decrease in menstrual bleeding
  - o **no bleeding at all.** In clinical studies of medroxyprogesterone acetate injectable suspension, 55% of women reported no menstrual bleeding (amenorrhea) after one year of use and 68% of women reported no menstrual bleeding after two years of use.
- **Missed period.** During the time you are using medroxyprogesterone acetate injectable suspension for birth controls, you may skip a period, or your periods may stop completely. If you have been receiving your shot of medroxyprogesterone acetate injectable suspension regularly every 3 months, then you are probably not pregnant. However, if you think that you may be pregnant, see your healthcare provider.

Unusually heavy or continuous bleeding is not a usual effect of medroxyprogesterone acetate injectable suspension and if this happens you should see your healthcare provider right away.

With continued use of medroxyprogesterone acetate injectable suspension, bleeding usually decreases and many women stop having periods completely. When you stop using medroxyprogesterone acetate injectable suspension your menstrual period will usually, in time, return to its normal cycle.

### **What if I want to become pregnant?**

Because medroxyprogesterone acetate injectable suspension is a long-acting birth control method, it takes some time after your last shot for its effect to wear off. Most women who try to get pregnant after using medroxyprogesterone acetate injectable suspension get pregnant within 18 months after their last shot. The length of time you use medroxyprogesterone acetate injectable suspension has no effect on how long it takes you to become pregnant after you stop using it.

### **General Information about Medroxyprogesterone Acetate Injectable Suspension**

Medicines are sometimes prescribed for conditions that are not mentioned in patient information leaflets. This leaflet summarizes the most important information about medroxyprogesterone acetate injectable suspension. If you would like more information, talk with your healthcare provider. You can ask your healthcare provider for information about medroxyprogesterone acetate injectable suspension that is written for healthcare providers.

### **What are the ingredients in medroxyprogesterone acetate injectable suspension?**

**Active ingredient:** medroxyprogesterone acetate

**Inactive ingredients:** polyethylene glycol 3350, polysorbate 80, sodium chloride, methylparaben, propylparaben, and water for injection. When necessary, pH is adjusted with sodium hydroxide or hydrochloric acid, or both.

This Patient Information has been approved by the U.S. Food and Drug Administration.

This product's labeling may have been updated. For the most recent prescribing information, please visit [www.hikma.com](http://www.hikma.com).

### **Manufactured for:**

Hikma Pharmaceuticals USA Inc.

Berkeley Heights, NJ 07922

Made in Spain

PIN635-WES/1

Revised: January 2023

### **PRINCIPAL DISPLAY PANEL - 150 mg/mL Vial Label**

NDC 24201-150-01

**Rx only**

### **Medroxyprogesterone Acetate Injectable Suspension, USP**

medroxy**PROGESTER**one acetate  
injectable suspension, USP

**150 mg/mL**

NDC 24201-150-01

Rx only

**medroxyPROGESTERone**  
**Acetate Injectable**  
**Suspension, USP**

**150 mg per mL**

**For Intramuscular Use ONLY**  
 1 mL Single-Dose Vial

**DOSAGE AND USE:** See accompanying prescribing information. Shake vigorously immediately before each use. Store upright.

Mfd. for Hikma  
 Berkeley Heights,  
 NJ 07922



(01)00324201150013

PLB289-WES/1

Lot:

Exp:

## MEDROXYPROGESTERONE ACETATE INJECTABLE SUSPENSION

medroxyprogesterone acetate injection, suspension

### Product Information

<b>Product Type</b>	HUMAN PRESCRIPTION DRUG	<b>Item Code (Source)</b>	NDC:24201-150
<b>Route of Administration</b>	INTRAMUSCULAR		

### Active Ingredient/Active Moiety

Ingredient Name	Basis of Strength	Strength
<b>MEDROXYPROGESTERONE ACETATE</b> (UNII: C2QI4IOI2G) (MEDROXYPROGESTERONE - UNII:HSU1C9YRES)	MEDROXYPROGESTERONE ACETATE	150 mg in 1 mL

### Inactive Ingredients

Ingredient Name	Strength
<b>POLYETHYLENE GLYCOL 3350</b> (UNII: G2M7P15E5P)	28.9 mg in 1 mL
<b>POLYSORBATE 80</b> (UNII: 6OZP39ZG8H)	2.41 mg in 1 mL
<b>SODIUM CHLORIDE</b> (UNII: 451W47IQ8X)	8.68 mg in 1 mL
<b>METHYLPARABEN</b> (UNII: A2I8C7HI9T)	1.37 mg in 1 mL
<b>PROPYLPARABEN</b> (UNII: Z8IX25C1OH)	0.15 mg in 1 mL
<b>WATER</b> (UNII: 059QF0KO0R)	
<b>SODIUM HYDROXIDE</b> (UNII: 55X04QC32I)	
<b>HYDROCHLORIC ACID</b> (UNII: QTT17582CB)	

### Packaging

#	Item Code	Package Description	Marketing Start Date	Marketing End Date
1	NDC:24201-150-25	25 in 1 CARTON	05/01/2023	
1	NDC:24201-150-00	1 mL in 1 VIAL; Type 0: Not a Combination Product		
2	NDC:24201-150-01	1 in 1 CARTON	05/01/2023	
2	NDC:24201-150-00	1 mL in 1 VIAL; Type 0: Not a Combination Product		

### Marketing Information

Marketing Category	Application Number or Monograph Citation	Marketing Start Date	Marketing End Date
ANDA	ANDA214309	05/01/2023	



---

**Labeler** - Hikma Pharmaceuticals USA inc. (118707839)

Revised: 1/2023

Hikma Pharmaceuticals USA inc.