

NORGESTIMATE AND ETHINYL ESTRADIOL- norgestimate and ethinyl estradiol
PD-Rx Pharmaceuticals, Inc.

HIGHLIGHTS OF PRESCRIBING INFORMATION

These highlights do not include all the information needed to use **SPRINTEC** safely and effectively. See full prescribing information for **SPRINTEC**.

SPRINTEC® (norgestimate/ethinyl estradiol) tablets, for oral use
Initial U.S. Approval: 1989

WARNING: CIGARETTE SMOKING AND SERIOUS CARDIOVASCULAR EVENTS

See full prescribing information for complete boxed warning.

- **Sprintec is contraindicated in women over 35 years old who smoke. (4)**
- **Cigarette smoking increases the risk of serious cardiovascular events from combination oral contraceptives (COC) use. (4)**

INDICATIONS AND USAGE

- Sprintec® (norgestimate and ethinyl estradiol tablets) is an estrogen/progestin COC, indicated for use by women to prevent pregnancy. (1.1)

DOSAGE AND ADMINISTRATION

- Take one tablet daily by mouth at the same time every day. (2.2)
- Take tablets in the order directed on the blister pack. (2.2)
- Do not skip or delay tablet intake. (2.2)

DOSAGE FORMS AND STRENGTHS

Sprintec (norgestimate and ethinyl estradiol tablets USP) consists of 28 round, flat-faced, beveled-edge, unscored tablets in the following order (3):

- 21 blue tablets each containing 0.250 mg norgestimate and 0.035 mg ethinyl estradiol
- 7 white tablets (inert)

CONTRAINDICATIONS

- A high risk of arterial or venous thrombotic diseases (4)
- Liver tumors or liver disease (4)
- Undiagnosed abnormal uterine bleeding (4)
- Pregnancy (4)
- Breast cancer or other estrogen-or progestin-sensitive cancer (4)

WARNINGS AND PRECAUTIONS

- Thromboembolic Disorders and Other Vascular Problems: Stop Sprintec if a thrombotic event occurs. Stop at least 4 weeks before and through 2 weeks after major surgery. Start no earlier than 4 weeks after delivery, in women who are not breastfeeding. (5.1)
- Liver disease: Discontinue Sprintec if jaundice occurs. (5.2)
- High blood pressure: If used in women with well-controlled hypertension, monitor blood pressure and stop Sprintec if blood pressure rises significantly. (5.3)
- Carbohydrate and lipid metabolic effects: Monitor prediabetic and diabetic women taking Sprintec. Consider an alternate contraceptive method for women with uncontrolled dyslipidemia. (5.5)
- Headache: Evaluate significant change in headaches and discontinue Sprintec if indicated. (5.6)
- Bleeding Irregularities and Amenorrhea: Evaluate irregular bleeding or amenorrhea. (5.7)

ADVERSE REACTIONS

The most common adverse reactions reported during clinical trials ($\geq 2\%$) were: headache/migraine, abdominal/gastrointestinal pain, vaginal infection, genital discharge, breast issues (including breast pain, discharge, and enlargement), mood disorders (including depression and mood altered), flatulence, nervousness, rash. (6.1)

To report SUSPECTED ADVERSE REACTIONS, contact TEVA USA, PHARMACOVIGILANCE at 1-866-832-8537 or drug.safety@tevapharm.com; or FDA at 1-800-FDA-1088

-----**DRUG INTERACTIONS**-----

Drugs or herbal products that induce certain enzymes including CYP3A4, may decrease the effectiveness of COCs or increase breakthrough bleeding. Counsel patients to use a back-up or alternative method of contraception when enzyme inducers are used with COCs. (7.1)

-----**USE IN SPECIFIC POPULATIONS**-----

Nursing mothers: Not recommended; can decrease milk production. (8.3)

See 17 for PATIENT COUNSELING INFORMATION and FDA-approved patient labeling.

Revised: 4/2022

FULL PRESCRIBING INFORMATION: CONTENTS*

WARNING: CIGARETTE SMOKING AND SERIOUS CARDIOVASCULAR EVENTS

1 INDICATIONS AND USAGE

1.1 Oral Contraceptive

2 DOSAGE AND ADMINISTRATION

2.1 How to Start Sprintec

2.2 How to Take Sprintec

2.3 Missed Tablets

2.4 Advice in Case of Gastrointestinal Disturbances

3 DOSAGE FORMS AND STRENGTHS

4 CONTRAINDICATIONS

5 WARNINGS AND PRECAUTIONS

5.1 Thromboembolic Disorders and Other Vascular Problems

5.2 Liver Disease

5.3 High Blood Pressure

5.4 Gallbladder Disease

5.5 Carbohydrate and Lipid Metabolic Effects

5.6 Headache

5.7 Bleeding Irregularities and Amenorrhea

5.8 COC Use Before or During Early Pregnancy

5.9 Depression

5.10 Carcinoma of Breast and Cervix

5.11 Effect on Binding Globulins

5.12 Monitoring

5.13 Hereditary Angioedema

5.14 Chloasma

6 ADVERSE REACTIONS

6.1 Clinical Trial Experience

6.2 Postmarketing Experience

7 DRUG INTERACTIONS

7.1 Effects of Other Drugs on Combined Oral Contraceptives

7.2 Effects of Combined Oral Contraceptives on Other Drugs

7.3 Interference with Laboratory Tests

8 USE IN SPECIFIC POPULATIONS

8.1 Pregnancy

8.3 Nursing Mothers

8.4 Pediatric Use

- 8.5 Geriatric Use
- 8.6 Hepatic Impairment
- 8.7 Renal Impairment

10 OVERDOSAGE

11 DESCRIPTION

12 CLINICAL PHARMACOLOGY

- 12.1 Mechanism of Action
- 12.2 Pharmacodynamics
- 12.3 Pharmacokinetics

13 NONCLINICAL TOXICOLOGY

- 13.1 Carcinogenesis, Mutagenesis, Impairment of Fertility

14 CLINICAL STUDIES

- 14.1 Contraception

16 HOW SUPPLIED/STORAGE AND HANDLING

- 16.1 How Supplied
- 16.2 Storage Conditions

17 PATIENT COUNSELING INFORMATION

* Sections or subsections omitted from the full prescribing information are not listed.

FULL PRESCRIBING INFORMATION

WARNING: CIGARETTE SMOKING AND SERIOUS CARDIOVASCULAR EVENTS

Cigarette smoking increases the risk of serious cardiovascular events from combination oral contraceptive (COC) use. This risk increases with age, particularly in women over 35 years of age, and with the number of cigarettes smoked. For this reason, COCs are contraindicated in women who are over 35 years of age and smoke [see Contraindications (4)].

1 INDICATIONS AND USAGE

1.1 Oral Contraceptive

Sprintec[®] (norgestimate and ethinyl estradiol tablets) is indicated for use by females of reproductive potential to prevent pregnancy [see *Clinical Studies* (14)].

2 DOSAGE AND ADMINISTRATION

2.1 How to Start Sprintec

Sprintec is dispensed in a blister pack tablet dispenser [see *How Supplied/Storage and Handling* (16)]. Sprintec may be started using either a Day 1 start or a Sunday start (see Table 1). For the first cycle of a Sunday Start regimen, an additional method of contraception should be used until after the first 7 consecutive days of administration.

2.2 How to Take Sprintec

Table 1: Instructions for Administration of Sprintec	
<p>Starting COCs in women not currently using hormonal contraception (Day 1 Start or Sunday Start)</p> <p>Important: Consider the possibility of ovulation and conception prior to initiation of this product.</p> <p>Tablet Color:</p> <ul style="list-style-type: none"> • Sprintec active tablets are blue (Day 1 to Day 21). • Sprintec has white inactive tablets (Day 22 to Day 28). 	<p>Day 1 Start:</p> <ul style="list-style-type: none"> • Take first active tablet without regard to meals on the first day of menses. • Take subsequent active tablets once daily at the same time each day for a total of 21 days. • Take one white inactive tablet daily for 7 days and at the same time of day that active tablets were taken. • Begin each subsequent pack on the same day of the week as the first cycle pack (i.e., on the day after taking the last inactive tablet)
	<p>Sunday Start:</p> <ul style="list-style-type: none"> • Take first active tablet without regard to meals on the first Sunday after the onset of menses. Due to the potential risk of becoming pregnant, use additional non-hormonal contraception (such as condoms and spermicide) for the first seven days of the patient's first cycle pack of Sprintec. • Take subsequent active tablets once daily at the same time each day for a total of 21 days. • Take one white inactive tablet daily for the following 7 days and at the same time of day that active tablets were taken. • Begin each subsequent pack on the same day of the week as the first cycle pack (i.e., on the Sunday after taking the last inactive tablet) and additional non-hormonal contraceptive is not needed.
<p>Switching to Sprintec from another oral contraceptive</p>	<p>Start on the same day that a new pack of the previous oral contraceptive would have started.</p>
<p>Switching from another contraceptive method to Sprintec</p>	<p>Start Sprintec:</p>
<ul style="list-style-type: none"> • Transdermal patch 	<ul style="list-style-type: none"> • On the day when next application would have been scheduled

<ul style="list-style-type: none"> • Vaginal ring 	<ul style="list-style-type: none"> • On the day when next insertion would have been scheduled
<ul style="list-style-type: none"> • Injection 	<ul style="list-style-type: none"> • On the day when next injection would have been scheduled
<ul style="list-style-type: none"> • Intrauterine contraceptive 	<ul style="list-style-type: none"> • On the day of removal • If the IUD is not removed on first day of the patient’s menstrual cycle, additional non-hormonal contraceptive (such as condoms and spermicide) is needed for the first seven days of the first cycle pack.
<ul style="list-style-type: none"> • Implant 	<ul style="list-style-type: none"> • On the day of removal
<p>Complete instructions to facilitate patient counseling on proper tablet usage are located in the FDA-Approved Patient Labeling.</p>	

Starting Sprintec after Abortion or Miscarriage

First-trimester

-

Second-trimester

-

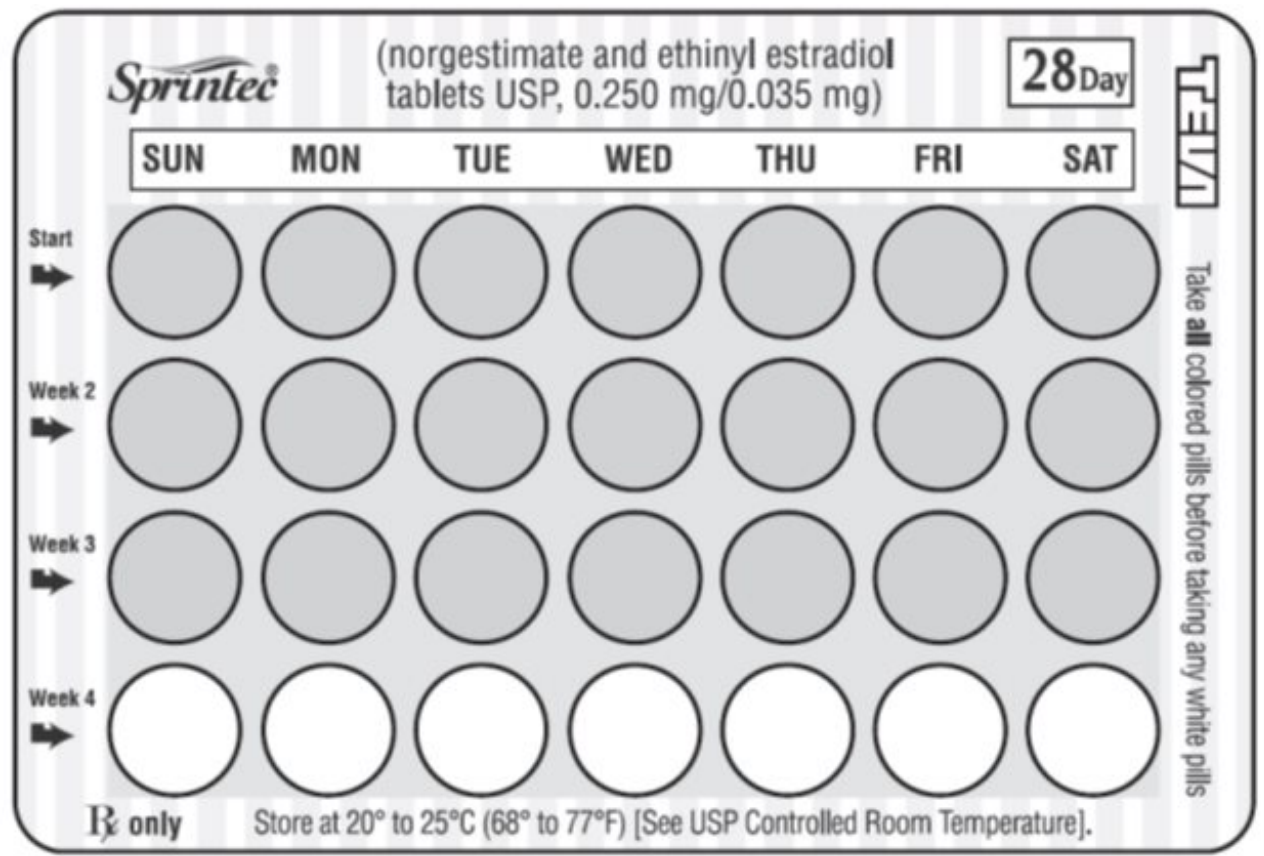
Starting Sprintec after Childbirth

-

There are two ways to start taking birth-control pills, Sunday Start or Day 1 Start. Your healthcare professional will tell you which to use.

How to Use Blister Cards for the 28 Tablets

1. Pick the Days of the Week Sticker that starts the first day of your period. (This is the day you begin bleeding or spotting, even if it is midnight when bleeding begins.) When you have picked the right sticker, throw away the others and place the sticker on the blister card over the pre-printed days of the week and make sure it lines up with the pills.
2. Your blister package consists of three parts, the foil pouch, wallet, and a blister pack containing 28 individually sealed pills. Note that the pills are arranged in four numbered rows of 7 pills, with the pre-printed days of the week printed above them. All 21 blue pills are “active” birth-control pills, and 7 white “reminder” pills. Refer to the sample of the blister card below:



1. After taking the last white pill, start a new blister card the **very next day** no matter when your period started. You will be taking a pill every day without interruption. Any time you start the pills later than directed, protect yourself by using another method of birth control until you have taken a pill a day for seven consecutive days. After taking the last white pill, start taking the first blue pill from the blister card the very next day.
2. Take the pills in each new package as before. Start with the blue pill on row #1 and take one pill each day, left to right, until the last white pill has been taken.

Three Ways to Remember in What Order to Take the Pills

1. Follow the sticker with the days of the week (placed above the pills).
2. Always go from left to right.
3. Always finish all your blue pills.

2.3 Missed Tablets

<ul style="list-style-type: none"> • If one active tablet is missed in Weeks 1, 2, or 3 	Take the tablet as soon as possible. Continue taking one tablet a day until the pack is finished.
<ul style="list-style-type: none"> • If two active tablets are missed in Week 1 or Week 2 	Take the two missed tablets as soon as possible and the next two active tablets the next day. Continue taking one tablet a day until the pack is finished. Additional non-hormonal contraception (such as

	condoms and spermicide) should be used as back-up if the patient has sex within 7 days after missing tablets.
<ul style="list-style-type: none"> If two active tablets are missed in the third week or three or more active tablets are missed in a row in Weeks 1, 2, or 3 	<p><u>Day 1 start:</u> Throw out the rest of the pack and start a new pack that same day.</p> <p><u>Sunday start:</u> Continue taking one tablet a day until Sunday, then throw out the rest of the pack and start a new pack that same day.</p> <p>Additional non-hormonal contraception (such as condoms and spermicide) should be used as back-up if the patient has sex within 7 days after missing tablets.</p>

2.4 Advice in Case of Gastrointestinal Disturbances

In case of severe vomiting or diarrhea, absorption may not be complete and additional contraceptive measures should be taken. If vomiting or diarrhea occurs within 3 to 4 hours after taking an active tablet, handle this as a missed tablet [see FDA-Approved **Error! Hyperlink reference not valid.**].

3 DOSAGE FORMS AND STRENGTHS

Sprintec (norgestimate and ethinyl estradiol tablets USP) is available in blister cards. Each blister card contains 28 tablets in the following order:

21 blue, round, flat-faced, beveled-edge, unscored tablet debossed with stylized **bon** on one side and **987** on the other side contains 0.250 mg norgestimate and 0.035 mg ethinyl estradiol

7 white, round, flat-faced, beveled-edge, unscored tablet (non-hormonal placebo) debossed with stylized **bon** on one side and **143** on the other side contains inert ingredients

4 CONTRAINDICATIONS

Do not prescribe Sprintec to women who are known to have the following conditions:

- A high risk of arterial or venous thrombotic diseases. Examples include women who are known to:
 - Smoke, if over age 35 [see *Boxed Warning and Warnings and Precautions (5.1)*]
 - Have deep vein thrombosis or pulmonary embolism, now or in the past [see *Warnings and Precautions (5.1)*]
 - Have inherited or acquired hypercoagulopathies [see *Warnings and Precautions (5.1)*]
 - Have cerebrovascular disease [see *Warnings and Precautions (5.1)*]
 - Have coronary artery disease [see *Warnings and Precautions (5.1)*]
 - Have thrombogenic valvular or thrombogenic rhythm diseases of the heart (for example, subacute bacterial endocarditis with valvular disease, or atrial fibrillation) [see *Warnings and Precautions (5.1)*]
 - Have uncontrolled hypertension [see *Warnings and Precautions (5.3)*]

- Have diabetes mellitus with vascular disease [see *Warnings and Precautions (5.5)*]
- Have headaches with focal neurological symptoms or migraine headaches with aura [see *Warnings and Precautions (5.6)*]
 - Women over age 35 with any migraine headaches [see *Warnings and Precautions (5.6)*]
- Liver tumors, benign or malignant, or liver disease [see *Warnings and Precautions (5.2)*]
- Undiagnosed abnormal uterine bleeding [see *Warnings and Precautions (5.7)*]
- Pregnancy, because there is no reason to use COCs during pregnancy [see *Warnings and Precautions (5.8)* and *Use in Specific Populations (8.1)*]
- Breast cancer or other estrogen- or progestin-sensitive cancer, now or in the past [see *Warnings and Precautions (5.10)*]

5 WARNINGS AND PRECAUTIONS

5.1 Thromboembolic Disorders and Other Vascular Problems

- Stop Sprintec if an arterial thrombotic event or venous thromboembolic (VTE) event occurs.
- Stop Sprintec if there is unexplained loss of vision, proptosis, diplopia, papilledema, or retinal vascular lesions. Evaluate for retinal vein thrombosis immediately [see *Adverse Reactions (6.2)*].
- If feasible, stop Sprintec at least 4 weeks before and through 2 weeks after major surgery or other surgeries known to have an elevated risk of VTE as well as during and following prolonged immobilization.
- Start Sprintec no earlier than 4 weeks after delivery, in women who are not breastfeeding. The risk of postpartum VTE decreases after the third postpartum week, whereas the risk of ovulation increases after the third postpartum week.
- The use of COCs increases the risk of VTE. However, pregnancy increases the risk of VTE as much or more than the use of COCs. The risk of VTE in women using COCs is 3 to 9 cases per 10,000 woman-years. The risk of VTE is highest during the first year of use of COCs and when restarting hormonal contraception after a break of 4 weeks or longer. The risk of thromboembolic disease due to COCs gradually disappears after use is discontinued.
- Use of COCs also increases the risk of arterial thromboses such as strokes and myocardial infarctions, especially in women with other risk factors for these events. COCs have been shown to increase both the relative and attributable risks of cerebrovascular events (thrombotic and hemorrhagic strokes). This risk increases with age, particularly in women over 35 years of age who smoke.
- Use COCs with caution in women with cardiovascular disease risk factors.

5.2 Liver Disease

Impaired Liver Function

Do not use Sprintec in women with liver disease, such as acute viral hepatitis or severe (decompensated) cirrhosis of liver [see *Contraindications (4)*]. Acute or chronic disturbances of liver function may necessitate the discontinuation of COC use until markers of liver function return to normal and COC causation has been excluded. Discontinue Sprintec if jaundice develops.

Liver Tumors

Sprintec is contraindicated in women with benign and malignant liver tumors [see *Contraindications (4)*]. Hepatic adenomas are associated with COC use. An estimate of the attributable risk is 3.3 cases/100,000 COC users. Rupture of hepatic adenomas may cause death through intra-abdominal hemorrhage.

Studies have shown an increased risk of developing hepatocellular carcinoma in long-term (>8 years) COC users. However, the risk of liver cancers in COC users is less than one case per million users.

5.3 High Blood Pressure

Sprintec is contraindicated in women with uncontrolled hypertension or hypertension with vascular disease [see *Contraindications (4)*]. For women with well-controlled hypertension, monitor blood pressure and stop Sprintec if blood pressure rises significantly.

An increase in blood pressure has been reported in women taking COCs, and this increase is more likely in older women with extended duration of use. The incidence of hypertension increases with increasing concentrations of progestin.

5.4 Gallbladder Disease

Studies suggest a small increased relative risk of developing gallbladder disease among COC users. Use of COCs may worsen existing gallbladder disease. A past history of COC-related cholestasis predicts an increased risk with subsequent COC use. Women with a history of pregnancy-related cholestasis may be at an increased risk for COC related cholestasis.

5.5 Carbohydrate and Lipid Metabolic Effects

Carefully monitor prediabetic and diabetic women who take Sprintec. COCs may decrease glucose tolerance.

Consider alternative contraception for women with uncontrolled dyslipidemia. A small proportion of women will have adverse lipid changes while on COCs.

Women with hypertriglyceridemia, or a family history thereof, may be at an increased risk of pancreatitis when using COCs.

5.6 Headache

If a woman taking Sprintec develops new headaches that are recurrent, persistent, or severe, evaluate the cause and discontinue Sprintec if indicated.

Consider discontinuation of Sprintec in the case of increased frequency or severity of migraine during COC use (which may be prodromal of a cerebrovascular event).

5.7 Bleeding Irregularities and Amenorrhea

Unscheduled Bleeding and Spotting

Unscheduled (breakthrough or intracyclic) bleeding and spotting sometimes occur in patients on COCs, especially during the first three months of use. If bleeding persists or occurs after previously regular cycles, check for causes such as pregnancy or

malignancy. If pathology and pregnancy are excluded, bleeding irregularities may resolve over time or with a change to a different contraceptive product.

In clinical trials of norgestimate and ethinyl estradiol, the frequency and duration of breakthrough bleeding and/or spotting was assessed in 1,647 patients (21,275 evaluable cycles). A total of 100 (7.5%) women discontinued norgestimate and ethinyl estradiol, at least in part, due to bleeding or spotting. Based on data from the clinical trials, 14 to 34% of women using norgestimate and ethinyl estradiol experienced unscheduled bleeding per cycle in the first year. The percent of women who experienced breakthrough/unscheduled bleeding tended to decrease over time.

Amenorrhea and Oligomenorrhea

Women who use Sprintec may experience amenorrhea. Some women may experience amenorrhea or oligomenorrhea after discontinuation of COCs, especially when such a condition was pre-existent.

If scheduled (withdrawal) bleeding does not occur, consider the possibility of pregnancy. If the patient has not adhered to the prescribed dosing schedule (missed one or more active tablets or started taking them on a day later than she should have), consider the possibility of pregnancy at the time of the first missed period and take appropriate diagnostic measures. If the patient has adhered to the prescribed regimen and misses two consecutive periods, rule out pregnancy.

5.8 COC Use Before or During Early Pregnancy

Extensive epidemiological studies have revealed no increased risk of birth defects in women who have used oral contraceptives prior to pregnancy. Studies also do not suggest a teratogenic effect, particularly in so far as cardiac anomalies and limb reduction defects are concerned, when oral contraceptives are taken inadvertently during early pregnancy. Discontinue Sprintec use if pregnancy is confirmed.

Administration of COCs to induce withdrawal bleeding should not be used as a test for pregnancy [*see Use in Specific Populations (8.1)*].

5.9 Depression

Carefully observe women with a history of depression and discontinue Sprintec if depression recurs to a serious degree.

5.10 Carcinoma of Breast and Cervix

-

5.11 Effect on Binding Globulins

The estrogen component of COCs may raise the serum concentrations of thyroxine-binding globulin, sex hormone-binding globulin, and cortisol-binding globulin. The dose of replacement thyroid hormone or cortisol therapy may need to be increased.

5.12 Monitoring

A woman who is taking COCs should have a yearly visit with her healthcare provider for a blood pressure check and for other indicated healthcare.

5.13 Hereditary Angioedema

In women with hereditary angioedema, exogenous estrogens may induce or exacerbate symptoms of angioedema.

5.14 Chloasma

Chloasma may occasionally occur, especially in women with a history of chloasma gravidarum. Women with a tendency to chloasma should avoid exposure to the sun or ultraviolet radiation while taking Sprintec.

6 ADVERSE REACTIONS

The following serious adverse reactions with the use of COCs are discussed elsewhere in labeling:

- Serious cardiovascular events and stroke [see *Boxed Warning and Warnings and Precautions (5.1)*]
- Vascular events [see *Warnings and Precautions (5.1)*]
- Liver disease [see *Warnings and Precautions (5.2)*]

Adverse reactions commonly reported by COC users are:

- Irregular uterine bleeding
- Nausea
- Breast tenderness
- Headache

6.1 Clinical Trial Experience

Because clinical trials are conducted under widely varying conditions, adverse reaction rates observed in the clinical trials of a drug cannot be directly compared to rates in the clinical trials of another drug and may not reflect the rates observed in clinical practice.

The safety of norgestimate and ethinyl estradiol was evaluated in 1,647 healthy women of child-bearing potential who participated in 3 clinical trials and received at least 1 dose of norgestimate and ethinyl estradiol for contraception. Two trials were randomized active-controlled trials and 1 was an uncontrolled open-label trial. In all 3 trials, subjects were followed for up to 24 cycles.

Common Adverse Reactions ($\geq 2\%$ of subjects): The most common adverse reactions reported by at least 2% of the 1,647 women were the following in order of decreasing incidence: headache/migraine (32.9%), abdominal/gastrointestinal pain (7.8%), vaginal infection (8.4%), genital discharge (6.8%), breast issues (including breast pain, discharge, and enlargement) (6.3%), mood disorders (including depression and mood altered) (5%), flatulence (3.2%), nervousness (2.9%), and rash (2.6%).

Adverse Reactions Leading to Study Discontinuation: Over the three trials, between 11 to 21% of subjects discontinued the trial due to an adverse reaction. The most common adverse reactions ($\geq 1\%$) leading to discontinuation were: metrorrhagia (6.9%), nausea/vomiting (5%), headache (4.1%), mood disorders (including depression and mood altered) (2.4%), premenstrual syndrome (1.7%), hypertension (1.4%), breast pain (1.4%), nervousness (1.3%), amenorrhea (1.1%), dysmenorrhea (1.1%), weight increased (1.1%), and flatulence (1.1%).

Serious Adverse Reactions: breast cancer (1 subject), mood disorders including depression, irritability, and mood swings (1 subject), myocardial infarction (1 subject), and venous thromboembolic events including pulmonary embolism (1 subject) and deep vein thrombosis (DVT) (1 subject).

6.2 Postmarketing Experience

The following additional adverse drug reactions have been reported from worldwide postmarketing experience with norgestimate/ethinyl estradiol. Because these reactions are reported voluntarily from a population of uncertain size, it is not always possible to reliably estimate their frequency or establish a causal relationship to drug exposure.

Infections and Infestations: Urinary tract infection;

Neoplasms Benign, Malignant and Unspecified (Incl. Cysts and Polyps): Breast cancer, benign breast neoplasm, hepatic adenoma, focal nodular hyperplasia, breast cyst;

Immune System Disorders: Hypersensitivity;

Metabolism and Nutrition Disorders: Dyslipidemia;

Psychiatric Disorders: Anxiety, insomnia;

Nervous System Disorders: Syncope, convulsion, paresthesia, dizziness;

Eye Disorders: Visual impairment, dry eye, contact lens intolerance;

Ear and Labyrinth Disorders: Vertigo;

Cardiac Disorders: Tachycardia, palpitations;

Vascular Events: Deep vein thrombosis, pulmonary embolism, retinal vascular thrombosis, hot flush;

Arterial Events: Arterial thromboembolism, myocardial infarction, cerebrovascular accident;

Respiratory, Thoracic and Mediastinal Disorders: Dyspnea;

Gastrointestinal Disorders: Pancreatitis, abdominal distension, diarrhea, constipation;

Hepatobiliary Disorders: Hepatitis;

Skin and Subcutaneous Tissue Disorders: Angioedema, erythema nodosum, hirsutism, night sweats, hyperhidrosis, photosensitivity reaction, urticaria, pruritus, acne;

Musculoskeletal, Connective Tissue, and Bone Disorders: Muscle spasms, pain in extremity, myalgia, back pain;

Reproductive System and Breast Disorders: Ovarian cyst, suppressed lactation, vulvovaginal dryness;

General Disorders and Administration Site Conditions: Chest pain, asthenic conditions.

7 DRUG INTERACTIONS

Consult the labeling of concurrently used drugs to obtain further information about interactions with hormonal contraceptives or the potential for enzyme alterations.

No drug-drug interaction studies were conducted with Sprintec.

7.1 Effects of Other Drugs on Combined Oral Contraceptives

Substances decreasing the plasma concentrations of COCs:

Drugs or herbal products that induce certain enzymes, including cytochrome P450 3A4 (CYP3A4), may decrease the plasma concentrations of COCs and potentially diminish the effectiveness of COCs or increase breakthrough bleeding. Some drugs or herbal products that may decrease the effectiveness of hormonal contraceptives include phenytoin, barbiturates, carbamazepine, bosentan, felbamate, griseofulvin, oxcarbazepine, rifampicin, topiramate, rifabutin, rufinamide, aprepitant, and products containing St. John's wort. Interactions between hormonal contraceptives and other drugs may lead to breakthrough bleeding and/or contraceptive failure. Counsel women to use an alternative method of contraception or a back-up method when enzyme inducers are used with COCs, and to continue back-up contraception for 28 days after discontinuing the enzyme inducer to ensure contraceptive reliability.

Colesevelam: Colesevelam, a bile acid sequestrant, given together with a COC, has been shown to significantly decrease the AUC of EE. The drug interaction between the contraceptive and colesevelam was decreased when the two drug products were given 4 hours apart.

Substances increasing the plasma concentrations of COCs:

Co-administration of atorvastatin or rosuvastatin and certain COCs containing ethinyl estradiol (EE) increase AUC values for EE by approximately 20 to 25%. Ascorbic acid and acetaminophen may increase plasma EE concentrations, possibly by inhibition of conjugation. CYP3A4 inhibitors such as itraconazole, voriconazole, fluconazole, grapefruit juice, or ketoconazole may increase plasma hormone concentrations.

Human immunodeficiency virus (HIV)/Hepatitis C virus (HCV) protease inhibitors and non-nucleoside reverse transcriptase inhibitors:

Significant changes (increase or decrease) in the plasma concentrations of estrogen and/or progestin have been noted in some cases of co-administration with HIV protease inhibitors (decrease [e.g., nelfinavir, ritonavir, darunavir/ritonavir, (fos)amprenavir/ritonavir, lopinavir/ritonavir, and tipranavir/ritonavir] or increase [e.g., indinavir and atazanavir/ritonavir])/HCV protease inhibitors (decrease [e.g., boceprevir and telaprevir]) or with non-nucleoside reverse transcriptase inhibitors (decrease [e.g., nevirapine] or increase [e.g., etravirine]).

7.2 Effects of Combined Oral Contraceptives on Other Drugs

- COCs containing EE may inhibit the metabolism of other compounds (e.g., cyclosporine, prednisolone, theophylline, tizanidine, and voriconazole) and increase their plasma concentrations.
- COCs have been shown to decrease plasma concentrations of acetaminophen, clofibric acid, morphine, salicylic acid, temazepam and lamotrigine. Significant decrease in plasma concentration of lamotrigine has been shown, likely due to induction of lamotrigine glucuronidation. This may reduce seizure control; therefore, dosage adjustments of lamotrigine may be necessary.
- Women on thyroid hormone replacement therapy may need increased doses of thyroid hormone because the serum concentration of thyroid-binding globulin

increases with use of COCs.

7.3 Interference with Laboratory Tests

The use of contraceptive steroids may influence the results of certain laboratory tests, such as coagulation factors, lipids, glucose tolerance, and binding proteins.

8 USE IN SPECIFIC POPULATIONS

8.1 Pregnancy

There is little or no increased risk of birth defects in women who inadvertently use COCs during early pregnancy. Epidemiologic studies and meta-analyses have not found an increased risk of genital or non-genital birth defects (including cardiac anomalies and limb reduction defects) following exposure to low dose COCs prior to conception or during early pregnancy.

Do not administer COCs to induce withdrawal bleeding as a test for pregnancy. Do not use COCs during pregnancy to treat threatened or habitual abortion.

8.3 Nursing Mothers

Advise the nursing mother to use other forms of contraception, when possible, until she has weaned her child. COCs can reduce milk production in breastfeeding mothers. This is less likely to occur once breastfeeding is well-established; however, it can occur at any time in some women. Small amounts of oral contraceptive steroids and/or metabolites are present in breast milk.

8.4 Pediatric Use

Safety and efficacy of Sprintec Tablets have been established in women of reproductive age. Efficacy is expected to be the same for postpubertal adolescents under the age of 18 and for users 18 years and older. Use of this product before menarche is not indicated.

8.5 Geriatric Use

Sprintec has not been studied in postmenopausal women and are not indicated in this population.

8.6 Hepatic Impairment

The pharmacokinetics of Sprintec have not been studied in subjects with hepatic impairment. However, steroid hormones may be poorly metabolized in patients with hepatic impairment. Acute or chronic disturbances of liver function may necessitate the discontinuation of COC use until markers of liver function return to normal and COC causation has been excluded. *[See Contraindications (4) and Warnings and Precautions (5.2).]*

8.7 Renal Impairment

The pharmacokinetics of Sprintec have not been studied in women with renal impairment.

10 OVERDOSAGE

There have been no reports of serious ill effects from overdosage of oral contraceptives, including ingestion by children. Overdosage may cause withdrawal bleeding in females and nausea.

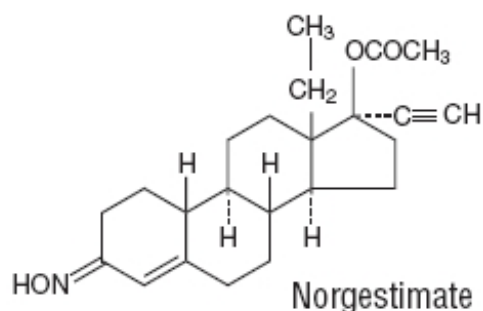
11 DESCRIPTION

Sprintec[®] (norgestimate and ethinyl estradiol tablets USP) is a combination oral contraceptive containing the progestational compound norgestimate, USP and the estrogenic compound ethinyl estradiol, USP.

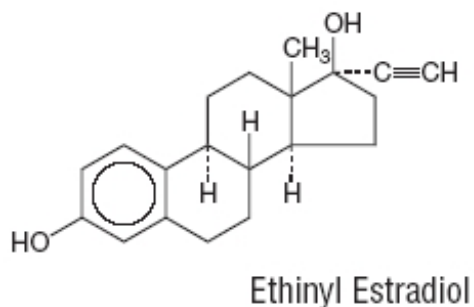
Each blue tablet contains 0.250 mg of the progestational compound norgestimate (18, 19-Dinor-17-pregn-4-en-20-yn-3-one, 17-(acetyloxy)-13-ethyl-, oxime, (17 α)-(+) -) and 0.035 mg of the estrogenic compound, ethinyl estradiol (19-nor-17 α -pregna, 1,3,5(10)-trien-20-yne-3, 17-diol), and the inactive ingredients include anhydrous lactose, FD&C blue no. 2 aluminum lake, lactose monohydrate, magnesium stearate, and pregelatinized corn starch.

Each white tablet contains only inert ingredients as follows: anhydrous lactose, hydroxypropyl methylcellulose 2208, magnesium stearate, and microcrystalline cellulose.

The structural formula is as follows:



1. C₂₃H₃₁NO₃ M.W. 369.50



1. C₂₀H₂₄O₂M.W. 296.40

12 CLINICAL PHARMACOLOGY

12.1 Mechanism of Action

-

12.2 Pharmacodynamics

No specific pharmacodynamic studies were conducted with Sprintec.

12.3 Pharmacokinetics

Absorption

Norgestimate (NGM) and EE are rapidly absorbed following oral administration. NGM is rapidly and completely metabolized by first pass (intestinal and/or hepatic) mechanisms to norelgestromin (NGMN) and norgestrel (NG), which are the major active metabolites of norgestimate.

Peak serum concentrations of NGMN and EE are generally reached by 2 hours after administration of Sprintec. Accumulation following multiple dosing of the 250 mcg NGM / 35 mcg EE dose is approximately 2-fold for NGMN and EE compared with single dose administration. The pharmacokinetics of NGMN is dose-proportional following NGM doses of 180 mcg to 250 mcg. Steady-state concentration of EE is achieved by Day 7 of each dosing cycle. Steady-state concentrations of NGMN and NG are achieved by Day 21. Non-linear accumulation (approximately 8 fold) of NG is observed as a result of high-affinity binding to SHBG, which limits its biological activity (**Error! Hyperlink reference not valid.**).

Table 3: Summary of NGMN, NG and EE pharmacokinetic parameters.

Mean (SD) Pharmacokinetic Parameters of Sprintec During a Three Cycle Study						
Analyte	Cycle	Day	C _{max}	t _{max} (h)	AUC _{0-24h}	t _{1/2} (h)
NGMN	1	1	1.78 (0.397)	1.19 (0.25)	9.9 (3.25)	18.4 (5.91)
	3	21	2.19 (0.655)	1.43 (0.68)	18.1 (5.53)	24.9 (9.04)
NG	1	1	0.649 (0.49)	1.42 (0.69)	6.22 (2.46)	37.8 (14)
	3	21	2.65 (1.11)	1.67 (1.32)	48.2 (20.5)	45 (20.4)
EE	1	1	92.2 (24.5)	1.2 (0.26)	629 (138)	10.1 (1.90)
	3	21	147 (41.5)	1.13 (0.23)	1210 (294)	15 (2.36)

C_{max}= peak serum concentration, t_{max}= time to reach peak serum concentration, AUC_{0-24h}= area under serum concentration vs time curve from 0 to 24 hours, t_{1/2}= elimination half-life, NC = not calculated.
NGMN and NG: C_{max}= ng/mL, AUC_{0-24h}= h•ng/mL
EE: C_{max}= pg/mL, AUC_{0-24h}= h•pg/mL

Food Effect

The effect of food on the pharmacokinetics of Sprintec has not been studied.

Distribution

NGMN and NG are highly bound (>97%) to serum proteins. NGMN is bound to albumin and not to SHBG, while NG is bound primarily to SHBG. EE is extensively bound (>97%) to serum albumin and induces an increase in the serum concentrations of SHBG.

Metabolism

NGM is extensively metabolized by first-pass mechanisms in the gastrointestinal tract and/or liver. NGM's primary active metabolite is NGMN. Subsequent hepatic metabolism of NGMN occurs and metabolites include NG, which is also active, and various hydroxylated and conjugated metabolites. Although NGMN and its metabolites inhibit a variety of P450 enzymes in human liver microsomes, under the recommended dosing regimen, the *in vivo* concentrations of NGMN and its metabolites, even at the peak serum levels, are relatively low compared to the inhibitory constant (K_i). EE is also metabolized to various hydroxylated products and their glucuronide and sulfate conjugates.

Excretion

The metabolites of NGMN and EE are eliminated by renal and fecal pathways. Following administration of ^{14}C -norgestimate, 47% (45 to 49%) and 37% (16 to 49%) of the administered radioactivity was eliminated in the urine and feces, respectively. Unchanged NGM was not detected in the urine. In addition to 17-deacetyl norgestimate, a number of metabolites of NGM have been identified in human urine following administration of radiolabeled NGM. These include 18, 19-Dinor-17-pregn-4-en-20-yn-3-one, 17-hydroxy-13-ethyl, (17 α)-(-); 18, 19-Dinor-5 β 17-pregnan-20-yn, 3 α , 17 β -dihydroxy-13-ethyl, (17 α), various hydroxylated metabolites and conjugates of these metabolites.

13 NONCLINICAL TOXICOLOGY

13.1 Carcinogenesis, Mutagenesis, Impairment of Fertility

[See Warnings and Precautions (5.2, 5.10) and Use in Specific Populations (8.1).]

14 CLINICAL STUDIES

14.1 Contraception

In three US clinical trials with norgestimate and ethinyl estradiol, 1,651 women aged 18 to 38 years were studied for up to 24 cycles, proving a total of 24,272 cycles of exposure. The racial demographic was about 73 to 86% Caucasian, 8 to 13% African-American, 6 to 14% Hispanic with the remainder Asian or Other ($\leq 1\%$). There were no exclusions on the basis of weight; the weight range for women treated was 82 to 303 lbs, with a mean weight of about 135 lbs. The pregnancy rate was approximately 1 pregnancy per 100 women-years.

16 HOW SUPPLIED/STORAGE AND HANDLING

16.1 How Supplied

Sprintec[®] (norgestimate and ethinyl estradiol tablets USP) is packaged in cartons of six blister cards. Each card contains 21 blue tablets and 7 white tablets containing inert ingredients. Each blue tablet contains 0.250 mg of the progestational compound, norgestimate, together with 0.035 mg of the estrogenic compound, ethinyl estradiol which are round, flat-faced, beveled-edge, unscored tablets, debossed with stylized **bon** on one side and **987** on the other side. Each white tablet contains inert ingredients and are round, flat-faced, beveled-edge, unscored tablets, debossed with stylized **bon** on one side and **143** on the other side. NDC: 72789-434-79

Call your doctor for medical advice about side effects. You may report side effects to FDA at 1-800-FDA-1088.

KEEP THIS AND ALL MEDICATIONS OUT OF THE REACH OF CHILDREN.

16.2 Storage Conditions

- Store at 20° to 25°C (68° to 77°F) [See USP Controlled Room Temperature].
- Protect from light.

17 PATIENT COUNSELING INFORMATION

See FDA-approved patient labeling (Patient Information and Instructions for Use).

Counsel patients about the following information:

- Cigarette smoking increases the risk of serious cardiovascular events from COC use, and that women who are over 35 years old and smoke should not use COCs [see *Boxed Warning*].
- Increased risk of VTE compared to non-users of COCs is greatest after initially starting a COC or restarting (following a 4-week or greater pill-free interval) the same or a different COC [see *Warnings and Precautions (5.1)*].
- Sprintec does not protect against HIV infection (AIDS) and other sexually transmitted infections.
- Sprintec is not to be used during pregnancy; if pregnancy occurs during use of Sprintec instruct the patient to stop further use [see *Warnings and Precautions (5.8)*].
- Take one tablet daily by mouth at the same time every day. Instruct patients what to do in the event tablets are missed [see *Dosage and Administration (2.2)*].
- Use a back-up or alternative method of contraception when enzyme inducers are used with Sprintec [see *Drug Interactions (7.1)*].
- COCs may reduce breast milk production; this is less likely to occur if breastfeeding is well established [see *Use in Specific Populations (8.3)*].
- Women who start COCs postpartum, and who have not yet had a period, should use an additional method of contraception until they have taken an active tablet for 7 consecutive days [see *Dosage and Administration (2.2)*].
- Amenorrhea may occur. Consider pregnancy in the event of amenorrhea at the time of the first missed period. Rule out pregnancy in the event of amenorrhea in two or more consecutive cycles [see *Warnings and Precautions (5.7)*].

TEVA PHARMACEUTICALS USA, INC.

North Wales, PA 19454

Rev. D 4/2016

Relabeled by:

PD-Rx Pharmaceuticals, Inc.

Oklahoma City, OK 73127

Patient Information

Sprintec[®] [sprin-tek]

(norgestimate and ethinyl estradiol tablets)

What is the most important information I should know about Sprintec?

Do not use Sprintec if you smoke cigarettes and are over 35 years

old. Smoking increases your risk of serious cardiovascular side effects from hormonal birth control pills, including death from heart attack, blood clots or stroke. This risk increases with age and the number of cigarettes you smoke.

What is Sprintec?

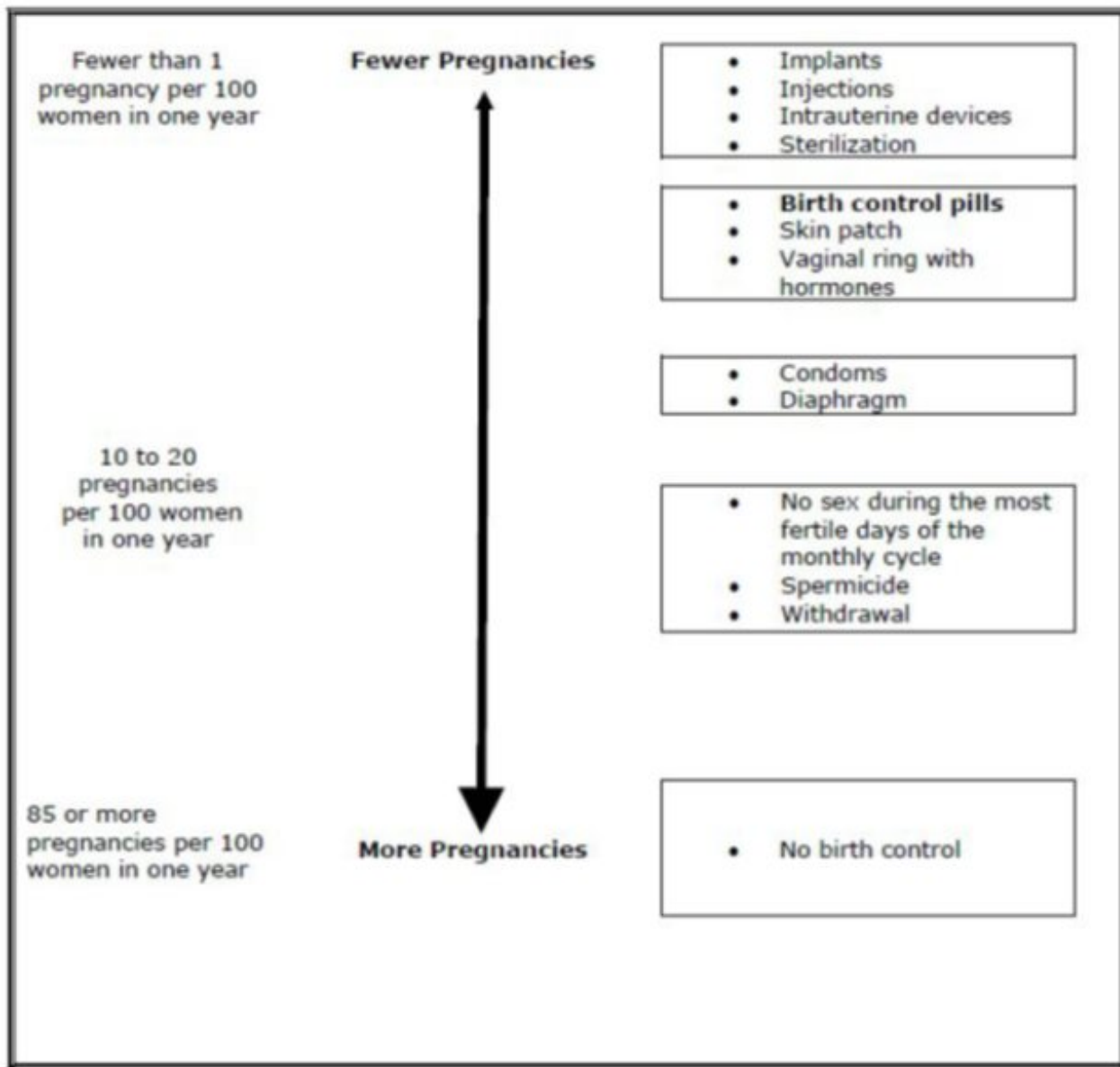
Sprintec is a birth control pill (oral contraceptive) used by women to prevent pregnancy.

How does Sprintec work for contraception?

Your chance of getting pregnant depends on how well you follow the directions for taking your birth control pills. The better you follow the directions, the less chance you have of getting pregnant.

Based on the results of clinical studies, about 1 out of 100 women may get pregnant during the first year they use Sprintec.

The following chart shows the chance of getting pregnant for women who use different methods of birth control. Each box on the chart contains a list of birth control methods that are similar in effectiveness. The most effective methods are at the top of the chart. The box on the bottom of the chart shows the chance of getting pregnant for women who do not use birth control and are trying to get pregnant.



Who should not take Sprintec?

Do not take Sprintec if you:

- smoke and are over 35 years of age
- had blood clots in your arms, legs, lungs, or eyes
- had a problem with your blood that makes it clot more than normal
- have certain heart valve problems or irregular heart beat that increases your risk of having blood clots
- had a stroke
- had a heart attack
- have high blood pressure that cannot be controlled by medicine
- have diabetes with kidney, eye, nerve, or blood vessel damage
- have certain kinds of severe migraine headaches with aura, numbness, weakness or changes in vision, or any migraine headaches if you are over 35 years of age
- have liver problems, including liver tumors
- have any unexplained vaginal bleeding
- are pregnant
- had breast cancer or any cancer that is sensitive to female hormones

If any of these conditions happen while you are taking Sprintec, stop taking Sprintec right away and talk to your healthcare provider. Use non-hormonal contraception when you stop taking Sprintec.

What should I tell my healthcare provider before taking Sprintec?

Tell your healthcare provider if you:

- are pregnant or think you may be pregnant
- are depressed now or have been depressed in the past
- had yellowing of your skin or eyes (jaundice) caused by pregnancy (cholestasis of pregnancy)
- are breastfeeding or plan to breastfeed. Sprintec may decrease the amount of breast milk you make. A small amount of the hormones in Sprintec may pass into your breast milk. Talk to your healthcare provider about the best birth control method for you while breastfeeding.

Tell your healthcare provider about all the medicines you take, including prescription and over-the-counter medicines, vitamins and herbal supplements.

Sprintec may affect the way other medicines work, and other medicines may affect how well Sprintec works.

Know the medicines you take. Keep a list of them to show your healthcare provider and pharmacist when you get a new medicine.

How should I take Sprintec?

Read the Instructions for Use at the end of this Patient Information.

What are the possible serious side effects of Sprintec?

- **Like pregnancy, Sprintec may cause serious side effects, including blood clots in your lungs, heart attack, or a stroke that may lead to death. Some other examples of serious blood clots include blood clots in the legs or eyes.**

Serious blood clots can happen especially if you smoke, are obese, or are older than 35 years of age. Serious blood clots are more likely to happen when you:

- first start taking birth control pills
- restart the same or different birth control pills after not using them for a month or more

Call your healthcare provider or go to a hospital emergency room right away if you have:

-
- | | |
|----------------------------------------|---------------------------------------------------------|
| • leg pain that will not go away | • a sudden, severe headache unlike your usual headaches |
| • sudden severe shortness of breath | • weakness or numbness in your arm or leg |
| • sudden change in vision or blindness | • trouble speaking |

- chest pain
-

Other serious side effects include:

- **liver problems, including:**
 - rare liver tumors
 - jaundice (cholestasis), especially if you previously had cholestasis of pregnancy. Call your healthcare provider if you have yellowing of your skin or eyes.
- **high blood pressure.** You should see your healthcare provider for a yearly check of your blood pressure.
- **gallbladder problems**
- **changes in the sugar and fat (cholesterol and triglycerides) levels in your blood**
- **new or worsening headaches including migraine headaches**
- **irregular or unusual vaginal bleeding and spotting between your menstrual periods, especially during the first 3 months of taking Sprintec.**
- **depression**
- **possible cancer in your breast and cervix**
- **swelling of your skin especially around your mouth, eyes, and in your throat (angioedema).** Call your healthcare provider if you have a swollen face, lips, mouth tongue or throat, which may lead to difficulty swallowing or breathing. Your chance of having angioedema is higher if you have a history of angioedema.
- **dark patches of skin around your forehead, nose, cheeks and around your mouth, especially during pregnancy (chloasma).** Women who tend to get chloasma should avoid spending a long time in sunlight, tanning booths, and under sun lamps while taking Sprintec. Use sunscreen if you have to be in the sunlight.
- **What are the most common side effects of Sprintec?**

You may stop taking the pill whenever you wish. Consider a visit with your healthcare provider for a pre-pregnancy checkup before you stop taking the pill.

- **What should I know about my period when taking Sprintec?**
- Your periods may be lighter and shorter than usual. Some women may miss a period. Irregular vaginal bleeding or spotting may happen while you are taking Sprintec, especially during the first few months of use. This usually is not a serious problem. It is important to continue taking your pills on a regular schedule to prevent a pregnancy.
- **What are the ingredients in Sprintec?**
- **Active ingredients:** Each blue pill contains norgestimate and ethinyl estradiol.
- **Inactive ingredients:**
- Blue pills: anhydrous lactose, FD&C blue no. 2 aluminum lake, lactose monohydrate, magnesium stearate, and pregelatinized corn starch.
- White pills: anhydrous lactose, hydroxypropyl methylcellulose 2208, magnesium stearate, and microcrystalline cellulose.
- **Instructions For Use**

Sprintec[®] [sprin-tek]

(norgestimate and ethinyl estradiol tablets)

- **Important Information about taking Sprintec**

1. Take **1** pill every day at the same time. Take the pills in the order directed on your tablet dispenser.
2. Do not skip your pills, even if you do not have sex often. If you miss pills (including starting the pack late) **you could get pregnant**. The more pills you miss, the more likely you are to get pregnant.
3. If you have trouble remembering to take Sprintec, talk to your healthcare provider. When you first start taking Sprintec, spotting or light bleeding in between your periods may occur. Contact your healthcare provider if this does not go away after a few months.
4. You may feel sick to your stomach (nauseous), especially during the first few months of taking Sprintec. If you feel sick to your stomach, do not stop taking the pill. The problem will usually go away. If your nausea does not go away, call your healthcare provider.
5. Missing pills can also cause spotting or light bleeding, even when you take the missed pills later. On the days you take 2 pills to make up for missed pills (see **What should I do if I miss any Sprintec pills?** below), you could also feel a little sick to your stomach.
6. It is not uncommon to miss a period. However, if you miss a period and have not taken Sprintec according to directions, or miss **2** periods in a row, or feel like you may be pregnant, call your healthcare provider. If you have a positive pregnancy test, you should stop taking Sprintec.
7. If you have vomiting or diarrhea within **3 to 4** hours of taking your pill, take another pill of the same color from your extra tablet dispenser. If you do not have an extra tablet dispenser, take the next pill in your tablet dispenser. Continue taking all your remaining pills in order. Start the first pill of your next tablet dispenser the day after finishing your current tablet dispenser. This will be 1 day earlier than originally scheduled. Continue on your new schedule.
8. If you have vomiting or diarrhea for more than 1 day, your birth control pills may not work as well. Use an additional birth control method, like condoms and a spermicide, until you check with your healthcare provider.
9. Stop taking Sprintec at least **4** weeks before you have major surgery and do not restart after the surgery without asking your healthcare provider. Be sure to use other forms of contraception (like condoms and spermicide) during this time period.

Before you start taking Sprintec:

- Decide what time of day you want to take your pill. It is important to take it at the same time every day and in the order as directed on your tablet dispenser.
- Have backup contraception (condoms and spermicide) available and if possible, an extra full pack of pills as needed.

When should I start taking Sprintec?

If you start taking Sprintec and you have not used a hormonal birth control method before:

- There are 2 ways to start taking your birth control pills. You can either start on a Sunday (Sunday Start) or on the first day (Day 1) of your natural menstrual period (Day 1 Start). Your healthcare provider should tell you when to start taking your birth control pill.
- If you use the Sunday Start, use non-hormonal back-up contraception such as condoms and spermicide for the first **7** days that you take Sprintec. You do not need

back-up contraception if you use the Day 1 Start.

If you start taking Sprintec and you are switching from another birth control pill:

- Start your new Sprintec pack on the same day that you would start the next pack of your previous birth control method.
- Do not continue taking the pills from your previous birth control pack.

If you start taking Sprintec and previously used a vaginal ring or transdermal patch:

- Start using Sprintec on the day you would have reapplied the next ring or patch.

If you start taking Sprintec and you are switching from a progestin-only method such as an implant or injection:

- Start taking Sprintec on the day of removal of your implant or on the day when you would have had your next injection.

If you start taking Sprintec and you are switching from an intrauterine device or system (IUD or IUS):

- Start taking Sprintec on the day of removal of your IUD or IUS.
- You do not need back-up contraception if your IUD or IUS is removed on the first day (Day 1) of your period. If your IUD or IUS is removed on any other day, use non-hormonal back-up contraception such as condoms and spermicide for the first 7 days that you take Sprintec.

Keep a calendar to track your period:

If this is the first time you are taking birth control pills, read, “ **When should I start taking Sprintec?**” above.

Follow these instructions for either a **Sunday Start** or a **Day 1 Start**.

Sunday Start:

You will use a **Sunday Start** if your healthcare provider told you to take your first pill on a Sunday.

- Take pill **1** on the Sunday **after your period starts**.
- If your period starts on a Sunday, take pill “ **1**” that day and refer to Day 1 Start instructions below.
- Take **1** pill every day in the order on the pill dispenser at the same time each day for **28** days.
- After taking the last pill on **Day 28** from the tablet dispenser, start taking the first pill from a new pack, on the same day of the week as the first pack (Sunday). Take the first pill in the new pack whether or not you are having your period.
- Use non-hormonal back-up contraception such as condoms and spermicide for the first **7** days of the first cycle that you take Sprintec.

Day 1 Start:

You will use a **Day 1 Start** if your doctor told you to take your first pill (Day 1) on the **first day of your period**.

- Take **1** pill every day in the order of the blister pack tablet dispenser, at the same time each day, for **28** days.

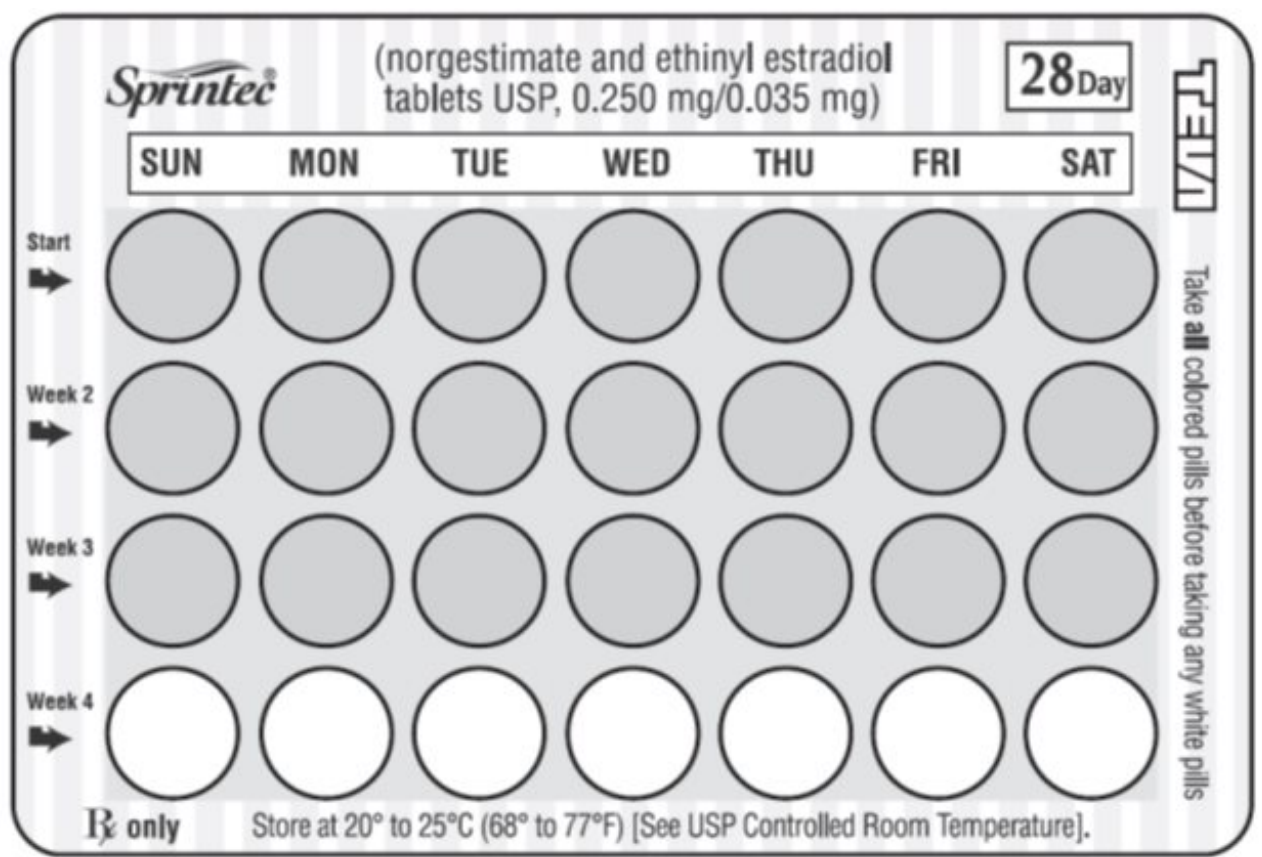
- After taking the last pill on **Day 28** from the tablet dispenser, start taking the first pill from a new pack, on the same day of the week as the first pack. Take the first pill in the new pack whether or not you are having your period.

Sprintec comes in a blister pack tablet dispenser.

There are two ways to start taking birth-control pills, Sunday Start or Day 1 Start. Your healthcare professional will tell you which to use.

How to Use Blister Cards for the 28 Tablets

1. Pick the Days of the Week Sticker that starts the first day of your period. (This is the day you begin bleeding or spotting, even if it is midnight when bleeding begins.) When you have picked the right sticker, throw away the others and place the sticker on the blister card over the pre-printed days of the week and make sure it lines up with the pills.
2. Your blister package consists of three parts, the foil pouch, wallet, and a blister pack containing 28 individually sealed pills. Note that the pills are arranged in four numbered rows of 7 pills, with the pre-printed days of the week printed above them. All 21 blue pills are “active” birth-control pills, and 7 white “reminder” pills. Refer to the sample of the blister card below:



1. After taking the last white pill, start a new blister card the **very next day** no matter when your period started. You will be taking a pill every day without interruption. Any time you start the pills later than directed, protect yourself by using another method of birth control until you have taken a pill a day for seven consecutive days. After taking the last white pill, start taking the first blue pill from the blister card the very next day.
2. Take the pills in each new package as before. Start with the blue pill on row #1 and take one pill each day, left to right, until the last white pill has been taken.

Three Ways to Remember in What Order to Take the Pills

1. Follow the sticker with the days of the week (placed above the pills).
2. Always go from left to right.
3. Always finish all your blue pills

What should I do if I miss any Sprintec pills?

If you miss 1 pill in Weeks 1, 2, or 3, follow these steps:

- Take it as soon as you remember. Take the next pill at your regular time. This means you may take **2** pills in **1** day.
- Then continue taking **1** pill every day until you finish the pack.
- You do not need to use a back-up birth control method if you have sex.

If you miss 2 pills in Week 1 or Week 2 of your pack, follow these steps:

•

If you miss 2 pills in a row in Week 3, or you miss 3 or more pills in a row during Weeks 1, 2, or 3 of the pack, follow these steps:

- **If you are a Day 1 Starter:**
 - Throw out the rest of the pill pack and start a new pack that same day.
 - You may not have your period this month but this is expected. However, if you miss your period 2 months in a row, call your healthcare provider because you might be pregnant.
 - You could become pregnant if you have sex during the first 7 days after you restart your pills. You **MUST** use a non-hormonal birth control method (such as a condom and spermicide) as a back-up if you have sex during the first **7** days after you restart your pills.
- **If you are a Sunday Starter:**
 - Keep taking **1** pill every day until Sunday. On Sunday, throw out the rest of the pack and start a new pack of pills that same day.
 - Use a non-hormonal birth control method (such as a condom and spermicide) as a back-up if you have sex during the first **7** days after you restart your pills.

If you have any questions or are unsure about the information in this leaflet, call your healthcare provider.

TEVA PHARMACEUTICALS USA, INC.

North Wales, PA 19454

Relabeled by:

PD-Rx Pharmaceuticals, Inc.

Oklahoma City, OK 73107

Rev. D 4/2016

Package/Label Display Panel

Rx only WARNING: KEEP OUT OF THE REACH OF CHILDREN
DOSAGE and STORAGE: SEE PACKAGE INSERT

72789-434-79 NORGESTIMATE/ ETHINYL ESTRADIOL 0.250MG/0.035MG 28 TABLETS	72789-434-79 NORGESTIMATE/ ETHINYL ESTRADIOL 0.250MG/0.035MG 28 TABLETS	72789-434-79 NORGESTIMATE/ ETHINYL ESTRADIOL 0.250MG/0.035MG 28 TABLETS
ReOrder # 111613 LOT 10005476 EXP 04/2025	ReOrder # 111613 LOT 10005476 EXP 04/2025	ReOrder # 111613 LOT 10005476 EXP 04/2025

CALL YOUR DOCTOR FOR MEDICAL ADVICE ABOUT SIDE EFFECTS.
 YOU MAY REPORT SIDE EFFECTS TO THE FDA AT 1-800-FDA-1088

TAKE AS DIRECTED
TOME COMO ESTA DIRIGIDO.

Each TABLET Contains: BLUE: 0.250 MG NORGESTIMATE, USP WITH
 0.035 MG ETHINYL ESTRADIOL, USP AND
 7 WHITE TABLETS EACH CONTAIN INERT
 INGREDIENTS.

NDC: 72789-434-79



**NORGESTIMATE/
 ETHINYL ESTRADIOL**

0.250MG/0.035MG

28 TABLETS



GTIN: 00372789434797
 SNO: 10005476000007
 EXP: 04/2025
 LOT: 10005476

372789434797

00555901658
 TEVA PHARMA, USA, INC.
 NORTH WALES, PA 19454

WHITE
 ORGANOLEPTIC MARKINGS:
 b 1,43
 ROUND

NORGESTIMATE AND ETHINYL ESTRADIOL

norgestimate and ethinyl estradiol kit

Product Information

Product Type	HUMAN PRESCRIPTION DRUG	Item Code (Source)	NDC:72789-434(NDC:0555-9016)
---------------------	-------------------------	---------------------------	------------------------------

Packaging

#	Item Code	Package Description	Marketing Start Date	Marketing End Date
1	NDC:72789-434-79	1 in 1 POUCH	10/02/2024	
1		1 in 1 BLISTER PACK; Type 0: Not a Combination Product		

Quantity of Parts

Part #	Package Quantity	Total Product Quantity
Part 1		21
Part 2		7

Part 1 of 2

SPRINTEC

norgestimate and ethinyl estradiol tablet

Product Information

Route of Administration ORAL

Active Ingredient/Active Moiety

Ingredient Name	Basis of Strength	Strength
NORGESTIMATE (UNII: C291HFX4DY) (NORGESTIMATE - UNII:C291HFX4DY)	NORGESTIMATE	0.25 mg
ETHINYL ESTRADIOL (UNII: 423D2T571U) (ETHINYL ESTRADIOL - UNII:423D2T571U)	ETHINYL ESTRADIOL	0.035 mg

Inactive Ingredients

Ingredient Name	Strength
ANHYDROUS LACTOSE (UNII: 3SY5LH9PMK)	
FD&C BLUE NO. 2 (UNII: L06K8R7DQK)	
INDIGOTINDISULFONATE SODIUM (UNII: D3741U8K7L)	
AMMONIUM SULFATE (UNII: SU46BAM238)	
SODIUM CARBONATE (UNII: 45P3261C7T)	
SODIUM BICARBONATE (UNII: 8MDF5V39QO)	
ALUMINUM CHLORIDE (UNII: 3CYT62D3GA)	
LACTOSE MONOHYDRATE (UNII: EWQ57Q8I5X)	
MAGNESIUM STEARATE (UNII: 70097M6I30)	
STARCH, CORN (UNII: O8232NY3SJ)	

Product Characteristics

Color	blue	Score	no score
Shape	ROUND	Size	6mm
Flavor		Imprint Code	b;987
Contains			

Marketing Information

Marketing Category	Application Number or Monograph Citation	Marketing Start Date	Marketing End Date
ANDA	ANDA075804	09/26/2002	

Part 2 of 2

INERT

inert tablet

Product Information

Route of Administration ORAL

Inactive Ingredients

Ingredient Name	Strength
ANHYDROUS LACTOSE (UNII: 3SY5LH9PMK)	
HYPROMELLOSE 2208 (3 MPA.S) (UNII: 9H4L916OBU)	
MAGNESIUM STEARATE (UNII: 70097M6I30)	
MICROCRYSTALLINE CELLULOSE (UNII: OP1R32D61U)	

Product Characteristics

Color	white	Score	no score
Shape	ROUND	Size	6mm
Flavor		Imprint Code	b;143
Contains			

Marketing Information

Marketing Category	Application Number or Monograph Citation	Marketing Start Date	Marketing End Date
ANDA	ANDA075804	09/26/2002	

Marketing Information

Marketing Category	Application Number or Monograph Citation	Marketing Start Date	Marketing End Date
ANDA	ANDA075804	09/26/2002	

Labeler - PD-Rx Pharmaceuticals, Inc. (156893695)

Registrant - PD-Rx Pharmaceuticals, Inc. (156893695)

Establishment

Name	Address	ID/FEI	Business Operations
PD-Rx Pharmaceuticals, Inc.		156893695	repack(72789-434)

Revised: 10/2024

PD-Rx Pharmaceuticals, Inc.