

**ENTRESTO- sacubitril and valsartan tablet, film coated**  
**Novartis Pharmaceuticals Corporation**

-----

**HIGHLIGHTS OF PRESCRIBING INFORMATION**

These highlights do not include all the information needed to use ENTRESTO safely and effectively. See full prescribing information for ENTRESTO.

ENTRESTO<sup>®</sup> (sacubitril and valsartan) tablets, for oral use  
Initial U.S. Approval: 2015

**WARNING: FETAL TOXICITY**

*See full prescribing information for complete boxed warning.*

- When pregnancy is detected, discontinue ENTRESTO as soon as possible. (5.1)
- Drugs that act directly on the renin-angiotensin system can cause injury and death to the developing fetus. (5.1)

-----  
**INDICATIONS AND USAGE**

ENTRESTO is a combination of sacubitril, a neprilysin inhibitor, and valsartan, an angiotensin II receptor blocker, indicated to reduce the risk of cardiovascular death and hospitalization for heart failure in patients with chronic heart failure (NYHA Class II-IV) and reduced ejection fraction. (1.1)

ENTRESTO is usually administered in conjunction with other heart failure therapies, in place of an ACE inhibitor or other ARB. (1.1)

-----  
**DOSAGE AND ADMINISTRATION**

- The recommended starting dose of ENTRESTO is 49/51 mg (sacubitril/valsartan) twice-daily. Double the dose of ENTRESTO after 2 to 4 weeks to the target maintenance dose of 97/103 mg (sacubitril/valsartan) twice-daily, as tolerated by the patient. (2.1)
- Reduce the starting dose to 24/26 mg (sacubitril/valsartan) twice-daily for:
  - patients not currently taking an angiotensin-converting enzyme inhibitor (ACEi) or an angiotensin II receptor blocker (ARB) or previously taking a low dose of these agents (2.2)
  - patients with severe renal impairment (2.3)
  - patients with moderate hepatic impairment (2.4)Double the dose of ENTRESTO every 2 to 4 weeks to the target maintenance dose of 97/103 mg (sacubitril/valsartan) twice-daily, as tolerated by the patient. (2.2, 2.3, 2.4)

-----  
**DOSAGE FORMS AND STRENGTHS**

- Film-coated tablets (sacubitril/valsartan): 24/26 mg; 49/51 mg; 97/103 mg (3)

-----  
**CONTRAINDICATIONS**

- Hypersensitivity to any component. (4)
- History of angioedema related to previous ACE inhibitor or ARB therapy. (4)
- Concomitant use with ACE inhibitors. (4, 7.1)
- Concomitant use with aliskiren in patients with diabetes. (4, 7.1)

-----  
**WARNINGS AND PRECAUTIONS**

- Observe for signs and symptoms of angioedema and hypotension. (5.2, 5.3)
- Monitor renal function and potassium in susceptible patients. (5.4, 5.5)

-----  
**ADVERSE REACTIONS**

Adverse reactions occurring  $\geq$  5% are hypotension, hyperkalemia, cough, dizziness, and renal failure. (6.1)

**To report SUSPECTED ADVERSE REACTIONS, contact Novartis Pharmaceuticals Corporation at 1-888-669-6682 or FDA at 1-800-FDA-1088 or [www.fda.gov/medwatch](http://www.fda.gov/medwatch).**

-----  
**DRUG INTERACTIONS**

- Dual blockade of the renin-angiotensin system: Do not use with an ACEi, do not use with aliskiren in patients with diabetes, and avoid use with an ARB. (4, 7.1)
- Potassium-sparing diuretics: May lead to increased serum potassium. (7.2)

- NSAIDs: May lead to increased risk of renal impairment. (7.3)
- Lithium: Increased risk of lithium toxicity. (7.4)

-----**USE IN SPECIFIC POPULATIONS**-----

- Lactation: Breastfeeding or drug should be discontinued. (8.2)
- Severe Hepatic Impairment: Use not recommended. (2.4, 8.6)

See 17 for **PATIENT COUNSELING INFORMATION** and FDA-approved patient labeling.

Revised: 11/2018

---

**FULL PRESCRIBING INFORMATION: CONTENTS\***

**WARNING: FETAL TOXICITY**

**1 INDICATIONS AND USAGE**

- 1.1 Heart Failure

**2 DOSAGE AND ADMINISTRATION**

- 2.1 Dosing
- 2.2 Dose Adjustment for Patients Not Taking an ACE inhibitor or ARB or Previously Taking Low Doses of These Agents
- 2.3 Dose Adjustment for Severe Renal Impairment
- 2.4 Dose Adjustment for Hepatic Impairment

**3 DOSAGE FORMS AND STRENGTHS**

**4 CONTRAINDICATIONS**

**5 WARNINGS AND PRECAUTIONS**

- 5.1 Fetal Toxicity
- 5.2 Angioedema
- 5.3 Hypotension
- 5.4 Impaired Renal Function
- 5.5 Hyperkalemia

**6 ADVERSE REACTIONS**

- 6.1 Clinical Trials Experience
- 6.2 Postmarketing Experience

**7 DRUG INTERACTIONS**

- 7.1 Dual Blockade of the Renin-Angiotensin-Aldosterone System
- 7.2 Potassium-Sparing Diuretics
- 7.3 Nonsteroidal Anti-Inflammatory Drugs (NSAIDs) Including Selective Cyclooxygenase-2 Inhibitors (COX-2 Inhibitors)
- 7.4 Lithium

**8 USE IN SPECIFIC POPULATIONS**

- 8.1 Pregnancy
- 8.2 Lactation
- 8.4 Pediatric Use
- 8.5 Geriatric Use
- 8.6 Hepatic Impairment
- 8.7 Renal Impairment

**10 OVERDOSAGE**

**11 DESCRIPTION**

**12 CLINICAL PHARMACOLOGY**

- 12.1 Mechanism of Action
- 12.2 Pharmacodynamics
- 12.3 Pharmacokinetics

## 13 NONCLINICAL TOXICOLOGY

13.1 Carcinogenesis, Mutagenesis, Impairment of Fertility

13.2 Animal Toxicology and/or Pharmacology

## 14 CLINICAL STUDIES

## 16 HOW SUPPLIED/STORAGE AND HANDLING

## 17 PATIENT COUNSELING INFORMATION

\* Sections or subsections omitted from the full prescribing information are not listed.

---

## FULL PRESCRIBING INFORMATION

### WARNING: FETAL TOXICITY

- **When pregnancy is detected, discontinue ENTRESTO as soon as possible (5.1)**
- **Drugs that act directly on the renin-angiotensin system can cause injury and death to the developing fetus (5.1)**

## 1 INDICATIONS AND USAGE

### 1.1 Heart Failure

ENTRESTO is indicated to reduce the risk of cardiovascular death and hospitalization for heart failure in patients with chronic heart failure (NYHA Class II-IV) and reduced ejection fraction.

ENTRESTO is usually administered in conjunction with other heart failure therapies, in place of an ACE inhibitor or other ARB.

## 2 DOSAGE AND ADMINISTRATION

### 2.1 Dosing

ENTRESTO is contraindicated with concomitant use of an angiotensin-converting enzyme (ACE) inhibitor. If switching from an ACE inhibitor to ENTRESTO allow a washout period of 36 hours between administration of the two drugs [see *Contraindications (4) and Drug Interactions (7.1)*].

The recommended starting dose of ENTRESTO is 49/51 mg twice-daily.

Double the dose of ENTRESTO after 2 to 4 weeks to the target maintenance dose of 97/103 mg twice daily, as tolerated by the patient.

### 2.2 Dose Adjustment for Patients Not Taking an ACE inhibitor or ARB or Previously Taking Low Doses of These Agents

A starting dose of 24/26 mg twice-daily is recommended for patients not currently taking an ACE inhibitor or an angiotensin II receptor blocker (ARB) and for patients previously taking low doses of these agents. Double the dose of ENTRESTO every 2 to 4 weeks to the target maintenance dose of 97/103 mg twice daily, as tolerated by the patient.

### 2.3 Dose Adjustment for Severe Renal Impairment

A starting dose of 24/26 mg twice-daily is recommended for patients with severe renal impairment (eGFR < 30 mL/min/1.73 m<sup>2</sup>). Double the dose of ENTRESTO every 2 to 4 weeks to the target maintenance dose of 97/103 mg twice daily, as tolerated by the patient.

No starting dose adjustment is needed for mild or moderate renal impairment.

## 2.4 Dose Adjustment for Hepatic Impairment

A starting dose of 24/26 mg twice-daily is recommended for patients with moderate hepatic impairment (Child-Pugh B classification). Double the dose of ENTRESTO every 2 to 4 weeks to the target maintenance dose of 97/103 mg twice daily, as tolerated by the patient.

No starting dose adjustment is needed for mild hepatic impairment.

Use in patients with severe hepatic impairment is not recommended.

## 3 DOSAGE FORMS AND STRENGTHS

ENTRESTO is supplied as unscored, ovaloid, film-coated tablets in the following strengths:

ENTRESTO 24/26 mg, (sacubitril 24 mg and valsartan 26 mg) are violet white and debossed with “NVR” on one side and “LZ” on the other side.

ENTRESTO 49/51 mg, (sacubitril 49 mg and valsartan 51 mg) are pale yellow and debossed with “NVR” on one side and “L1” on the other side.

ENTRESTO 97/103 mg, (sacubitril 97 mg and valsartan 103 mg) are light pink and debossed with “NVR” on one side and “L11” on the other side.

## 4 CONTRAINDICATIONS

ENTRESTO is contraindicated:

- in patients with hypersensitivity to any component
- in patients with a history of angioedema related to previous ACE inhibitor or ARB therapy [*see Warnings and Precautions (5.2)*]
- with concomitant use of ACE inhibitors. Do not administer within 36 hours of switching from or to an ACE inhibitor [*see Drug Interactions (7.1)*]
- with concomitant use of aliskiren in patients with diabetes [*see Drug Interactions (7.1)*]

## 5 WARNINGS AND PRECAUTIONS

### 5.1 Fetal Toxicity

ENTRESTO can cause fetal harm when administered to a pregnant woman. Use of drugs that act on the renin-angiotensin system during the second and third trimesters of pregnancy reduces fetal renal function and increases fetal and neonatal morbidity and death. When pregnancy is detected, consider alternative drug treatment and discontinue ENTRESTO. However, if there is no appropriate alternative to therapy with drugs affecting the renin-angiotensin system, and if the drug is considered lifesaving for the mother, advise a pregnant woman of the potential risk to the fetus [*see Use in Specific Populations (8.1)*].

### 5.2 Angioedema

ENTRESTO may cause angioedema. In the double-blind period of PARADIGM-HF, 0.5% of patients treated with ENTRESTO and 0.2% of patients treated with enalapril had angioedema [*see Adverse Reactions (6.1)*]. If angioedema occurs, discontinue ENTRESTO immediately, provide appropriate therapy, and monitor for airway compromise. ENTRESTO must not be re-administered. In cases of confirmed angioedema where swelling has been confined to the face and lips, the condition has generally resolved without treatment, although antihistamines have been useful in relieving symptoms.

Angioedema associated with laryngeal edema may be fatal. Where there is involvement of the tongue, glottis or larynx, likely to cause airway obstruction, administer appropriate therapy, e.g., subcutaneous

epinephrine/adrenaline solution 1:1000 (0.3 mL to 0.5 mL) and take measures necessary to ensure maintenance of a patent airway.

ENTRESTO has been associated with a higher rate of angioedema in Black than in non-Black patients.

Patients with a prior history of angioedema may be at increased risk of angioedema with ENTRESTO [see *Adverse Reactions (6.1)*]. ENTRESTO must not be used in patients with a known history of angioedema related to previous ACE inhibitor or ARB therapy [see *Contraindications (4)*]. ENTRESTO should not be used in patients with hereditary angioedema.

### 5.3 Hypotension

ENTRESTO lowers blood pressure and may cause symptomatic hypotension. Patients with an activated renin-angiotensin system, such as volume- and/or salt-depleted patients (e.g., those being treated with high doses of diuretics), are at greater risk. In the double-blind period of PARADIGM-HF, 18% of patients treated with ENTRESTO and 12% of patients treated with enalapril reported hypotension as an adverse event [see *Adverse Reactions (6.1)*], with hypotension reported as a serious adverse event in approximately 1.5% of patients in both treatment arms. Correct volume or salt depletion prior to administration of ENTRESTO or start at a lower dose. If hypotension occurs, consider dose adjustment of diuretics, concomitant antihypertensive drugs, and treatment of other causes of hypotension (e.g., hypovolemia). If hypotension persists despite such measures, reduce the dosage or temporarily discontinue ENTRESTO. Permanent discontinuation of therapy is usually not required.

### 5.4 Impaired Renal Function

As a consequence of inhibiting the renin-angiotensin-aldosterone system (RAAS), decreases in renal function may be anticipated in susceptible individuals treated with ENTRESTO. In the double-blind period of PARADIGM-HF, 5% of patients in both the ENTRESTO and enalapril groups reported renal failure as an adverse event [see *Adverse Reactions (6.1)*]. In patients whose renal function depends upon the activity of the renin-angiotensin-aldosterone system (e.g., patients with severe congestive heart failure), treatment with ACE inhibitors and angiotensin receptor antagonists has been associated with oliguria, progressive azotemia and, rarely, acute renal failure and death. Closely monitor serum creatinine, and down-titrate or interrupt ENTRESTO in patients who develop a clinically significant decrease in renal function [see *Use in Specific Populations (8.7)* and *Clinical Pharmacology (12.3)*].

As with all drugs that affect the RAAS, ENTRESTO may increase blood urea and serum creatinine levels in patients with bilateral or unilateral renal artery stenosis. In patients with renal artery stenosis, monitor renal function.

### 5.5 Hyperkalemia

Through its actions on the RAAS, hyperkalemia may occur with ENTRESTO. In the double-blind period of PARADIGM-HF, 12% of patients treated with ENTRESTO and 14% of patients treated with enalapril reported hyperkalemia as an adverse event [see *Adverse Reactions (6.1)*]. Monitor serum potassium periodically and treat appropriately, especially in patients with risk factors for hyperkalemia such as severe renal impairment, diabetes, hypoaldosteronism, or a high potassium diet. Dosage reduction or interruption of ENTRESTO may be required [see *Dosage and Administration (2.1)*].

## 6 ADVERSE REACTIONS

Clinically significant adverse reactions that appear in other sections of the labeling include:

- Angioedema [see *Warnings and Precautions (5.2)*]
- Hypotension [see *Warnings and Precautions (5.3)*]
- Impaired Renal Function [see *Warnings and Precautions (5.4)*]
- Hyperkalemia [see *Warnings and Precautions (5.5)*]

## 6.1 Clinical Trials Experience

Because clinical trials are conducted under widely varying conditions, adverse reaction rates observed in the clinical trials of a drug cannot be directly compared to rates in the clinical trials of another drug and may not reflect the rates observed in practice.

In the PARADIGM-HF trial, subjects were required to complete sequential enalapril and ENTRESTO run-in periods of (median) 15 and 29 days, respectively, prior to entering the randomized double-blind period comparing ENTRESTO and enalapril. During the enalapril run-in period, 1,102 patients (10.5%) were permanently discontinued from the study, 5.6% because of an adverse event, most commonly renal dysfunction (1.7%), hyperkalemia (1.7%) and hypotension (1.4%). During the ENTRESTO run-in period, an additional 10.4% of patients permanently discontinued treatment, 5.9% because of an adverse event, most commonly renal dysfunction (1.8%), hypotension (1.7%) and hyperkalemia (1.3%). Because of this run-in design, the adverse reaction rates described below are lower than expected in practice.

In the double-blind period, safety was evaluated in 4,203 patients treated with ENTRESTO and 4,229 treated with enalapril. In PARADIGM-HF, patients randomized to ENTRESTO received treatment for up to 4.3 years, with a median duration of exposure of 24 months; 3,271 patients were treated for more than one year. Discontinuation of therapy because of an adverse event during the double-blind period occurred in 450 (10.7%) of ENTRESTO treated patients and 516 (12.2%) of patients receiving enalapril.

Adverse reactions occurring at an incidence of  $\geq 5\%$  in patients who were treated with ENTRESTO in the double-blind period are shown in Table 1.

**Table 1: Adverse Reactions Reported in  $\geq 5\%$  of Patients Treated with ENTRESTO in the Double-Blind Period**

	<b>ENTRESTO (n = 4,203) %</b>	<b>Enalapril (n = 4,229) %</b>
Hypotension	18	12
Hyperkalemia	12	14
Cough	9	13
Dizziness	6	5
Renal failure/acute renal failure	5	5

In the PARADIGM-HF trial, the incidence of angioedema was 0.1% in both the enalapril and ENTRESTO run-in periods. In the double-blind period, the incidence of angioedema was higher in patients treated with ENTRESTO than enalapril (0.5% and 0.2%, respectively). The incidence of angioedema in Black patients was 2.4% with ENTRESTO and 0.5% with enalapril [*see Warnings and Precautions (5.2)*].

Orthostasis was reported in 2.1% of patients treated with ENTRESTO compared to 1.1% of patients treated with enalapril during the double-blind period of PARADIGM-HF. Falls were reported in 1.9% of patients treated with ENTRESTO compared to 1.3% of patients treated with enalapril.

### Laboratory Abnormalities

#### *Hemoglobin and Hematocrit*

Decreases in hemoglobin/hematocrit of  $> 20\%$  were observed in approximately 5% of both ENTRESTO- and enalapril-treated patients in the double-blind period in PARADIGM-HF.

#### *Serum Creatinine*

Increases in serum creatinine of  $> 50\%$  were observed in 1.4% of patients in the enalapril run-in period and 2.2% of patients in the ENTRESTO run-in period. During the double-blind period, approximately

16% of both ENTRESTO- and enalapril-treated patients had increases in serum creatinine of > 50%.

### *Serum Potassium*

Potassium concentrations > 5.5 mEq/L were observed in approximately 4% of patients in both the enalapril and ENTRESTO run-in periods. During the double-blind period, approximately 16% of both ENTRESTO- and enalapril-treated patients had potassium concentrations > 5.5 mEq/L.

## **6.2 Postmarketing Experience**

The following additional adverse reactions have been reported in postmarketing experience. Because these reactions are reported voluntarily from a population of uncertain size, it is not always possible to reliably estimate their frequency or establish a causal relationship to drug exposure.

*Hypersensitivity including rash, pruritus, and anaphylactic reaction*

## **7 DRUG INTERACTIONS**

### **7.1 Dual Blockade of the Renin-Angiotensin-Aldosterone System**

Concomitant use of ENTRESTO with an ACE inhibitor is contraindicated because of the increased risk of angioedema [see *Contraindications (4)*].

Avoid use of ENTRESTO with an ARB, because ENTRESTO contains the angiotensin II receptor blocker valsartan.

The concomitant use of ENTRESTO with aliskiren is contraindicated in patients with diabetes [see *Contraindications (4)*]. Avoid use with aliskiren in patients with renal impairment (eGFR < 60 mL/min/1.73 m<sup>2</sup>).

### **7.2 Potassium-Sparing Diuretics**

As with other drugs that block angiotensin II or its effects, concomitant use of potassium-sparing diuretics (e.g., spironolactone, triamterene, amiloride), potassium supplements, or salt substitutes containing potassium may lead to increases in serum potassium [see *Warnings and Precautions (5.5)*].

### **7.3 Nonsteroidal Anti-Inflammatory Drugs (NSAIDs) Including Selective Cyclooxygenase-2 Inhibitors (COX-2 Inhibitors)**

In patients who are elderly, volume-depleted (including those on diuretic therapy), or with compromised renal function, concomitant use of NSAIDs, including COX-2 inhibitors, with ENTRESTO may result in worsening of renal function, including possible acute renal failure. These effects are usually reversible. Monitor renal function periodically.

### **7.4 Lithium**

Increases in serum lithium concentrations and lithium toxicity have been reported during concomitant administration of lithium with angiotensin II receptor antagonists. Monitor serum lithium levels during concomitant use with ENTRESTO.

## **8 USE IN SPECIFIC POPULATIONS**

### **8.1 Pregnancy**

#### Risk Summary

ENTRESTO can cause fetal harm when administered to a pregnant woman. Use of drugs that act on the renin-angiotensin system during the second and third trimesters of pregnancy reduces fetal renal function and increases fetal and neonatal morbidity and death. Most epidemiologic studies examining

fetal abnormalities after exposure to antihypertensive use in the first trimester have not distinguished drugs affecting the renin-angiotensin system from other antihypertensive agents. In animal reproduction studies, ENTRESTO treatment during organogenesis resulted in increased embryo-fetal lethality in rats and rabbits and teratogenicity in rabbits. When pregnancy is detected, consider alternative drug treatment and discontinue ENTRESTO. However, if there is no appropriate alternative to therapy with drugs affecting the renin-angiotensin system, and if the drug is considered lifesaving for the mother, advise a pregnant woman of the potential risk to the fetus.

The estimated background risk of major birth defects and miscarriage for the indicated population is unknown. In the U.S. general population, the estimated background risk of major birth defects and miscarriage in clinically recognized pregnancies is 2-4% and 15-20%, respectively.

### Clinical Considerations

#### *Fetal/Neonatal Adverse Reactions*

Oligohydramnios in pregnant women who use drugs affecting the renin-angiotensin system in the second and third trimesters of pregnancy can result in the following: reduced fetal renal function leading to anuria and renal failure, fetal lung hypoplasia, skeletal deformations, including skull hypoplasia, hypotension, and death.

Perform serial ultrasound examinations to assess the intra-amniotic environment. Fetal testing may be appropriate, based on the week of gestation. Patients and physicians should be aware, however, that oligohydramnios may not appear until after the fetus has sustained irreversible injury. If oligohydramnios is observed, consider alternative drug treatment. Closely observe neonates with histories of *in utero* exposure to ENTRESTO for hypotension, oliguria, and hyperkalemia. In neonates with a history of *in utero* exposure to ENTRESTO, if oliguria or hypotension occurs, support blood pressure and renal perfusion. Exchange transfusions or dialysis may be required as a means of reversing hypotension and replacing renal function.

### Data

#### *Animal Data*

ENTRESTO treatment during organogenesis resulted in increased embryo-fetal lethality in rats at doses  $\geq 49$  mg sacubitril/51 mg valsartan/kg/day ( $\leq 0.14$  [LBQ657, the active metabolite] and 1.5 [valsartan]-fold the maximum recommended human dose [MRHD] of 97/103 mg twice-daily on the basis of the area under the plasma drug concentration-time curve [AUC]) and rabbits at doses  $\geq 5$  mg sacubitril/5 mg valsartan/kg/day (4-fold and 0.06-fold the MRHD on the basis of valsartan and LBQ657 AUC, respectively). ENTRESTO is teratogenic based on a low incidence of fetal hydrocephaly, associated with maternally toxic doses, which was observed in rabbits at an ENTRESTO dose of  $\geq 5$  mg sacubitril/5 mg valsartan/kg/day. The adverse embryo-fetal effects of ENTRESTO are attributed to the angiotensin receptor antagonist activity.

Pre- and postnatal development studies in rats at sacubitril doses up to 750 mg/kg/day (4.5-fold the MRHD on the basis of LBQ657 AUC) and valsartan at doses up to 600 mg/kg/day (0.86-fold the MRHD on the basis of AUC) indicate that treatment with ENTRESTO during organogenesis, gestation and lactation may affect pup development and survival.

## **8.2 Lactation**

### Risk Summary

There is no information regarding the presence of sacubitril/valsartan in human milk, the effects on the breastfed infant, or the effects on milk production. Sacubitril/valsartan is present in rat milk. Because of the potential for serious adverse reactions in breastfed infants from exposure to sacubitril/valsartan, advise a nursing woman that breastfeeding is not recommended during treatment with ENTRESTO.

### Data



Following an oral dose (15 mg sacubitril/15 mg valsartan/kg) of [<sup>14</sup>C] ENTRESTO to lactating rats, transfer of LBQ657 into milk was observed. After a single oral administration of 3 mg/kg [<sup>14</sup>C] valsartan to lactating rats, transfer of valsartan into milk was observed.

#### 8.4 Pediatric Use

Safety and effectiveness in pediatric patients have not been established.

#### 8.5 Geriatric Use

No relevant pharmacokinetic differences have been observed in elderly (≥ 65 years) or very elderly (≥ 75 years) patients compared to the overall population [see *Clinical Pharmacology* (12.3)].

#### 8.6 Hepatic Impairment

No dose adjustment is required when administering ENTRESTO to patients with mild hepatic impairment (Child-Pugh A classification). The recommended starting dose in patients with moderate hepatic impairment (Child-Pugh B classification) is 24/26 mg twice daily. The use of ENTRESTO in patients with severe hepatic impairment (Child-Pugh C classification) is not recommended, as no studies have been conducted in these patients [see *Dosage and Administration* (2.4), *Clinical Pharmacology* (12.3)].

#### 8.7 Renal Impairment

No dose adjustment is required in patients with mild (eGFR 60 to 90 mL/min/1.73 m<sup>2</sup>) to moderate (eGFR 30 to 60 mL/min/1.73 m<sup>2</sup>) renal impairment. The recommended starting dose in patients with severe renal impairment (eGFR < 30 mL/min/1.73 m<sup>2</sup>) is 24/26 mg twice daily [see *Dosage and Administration* (2.3), *Warnings and Precautions* (5.4) and *Clinical Pharmacology* (12.3)].

### 10 OVERDOSAGE

Limited data are available with regard to overdosage in human subjects with ENTRESTO. In healthy volunteers, a single dose of ENTRESTO 583 mg sacubitril/617 mg valsartan, and multiple doses of 437 mg sacubitril/463 mg valsartan (14 days) have been studied and were well tolerated.

Hypotension is the most likely result of overdosage due to the blood pressure lowering effects of ENTRESTO. Symptomatic treatment should be provided.

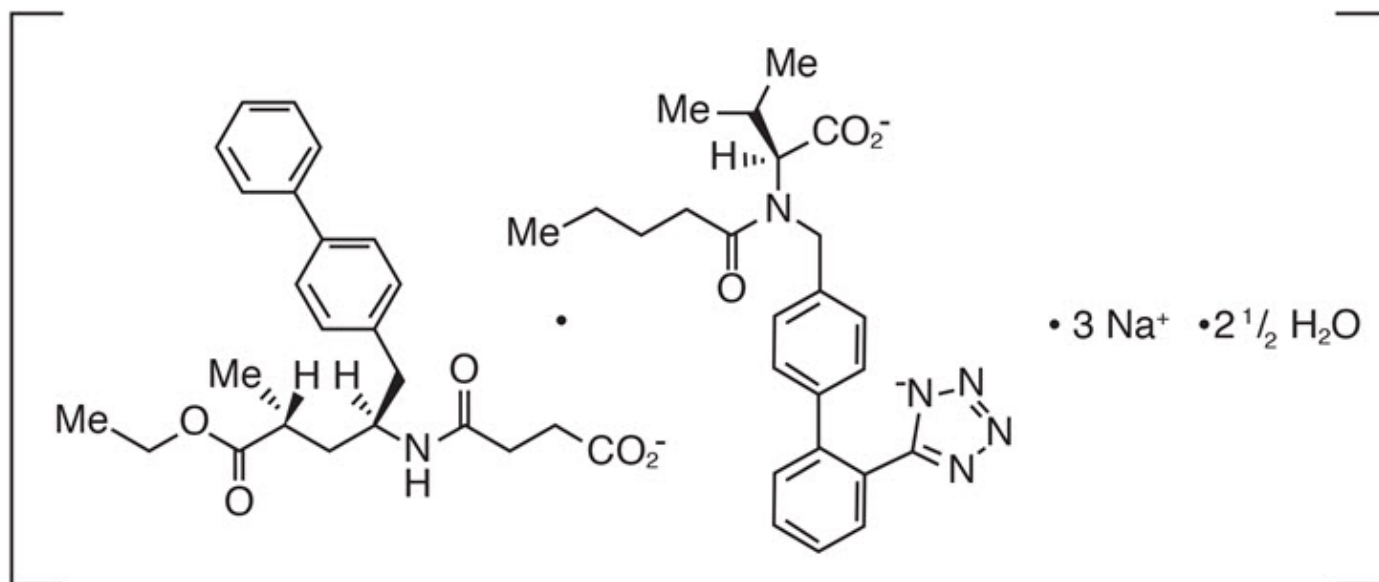
ENTRESTO is unlikely to be removed by hemodialysis because of high protein binding.

### 11 DESCRIPTION

ENTRESTO (sacubitril and valsartan) is a combination of a neprilysin inhibitor and an angiotensin II receptor blocker.

ENTRESTO contains a complex comprised of anionic forms of sacubitril and valsartan, sodium cations, and water molecules in the molar ratio of 1:1:3:2.5, respectively. Following oral administration, the complex dissociates into sacubitril (which is further metabolized to LBQ657) and valsartan. The complex is chemically described as Octadecasodiumhexakis(4-{{(1S,3R)-1-([1,1'-biphenyl]-4-ylmethyl)-4-ethoxy-3-methyl-4-oxobutyl}amino}-4-oxobutanoate)hexakis(N-pentanoyl-N-{{2'-(1H-tetrazol-1-ylid-5-yl)[1,1'-biphenyl]-4-yl}methyl}-L-valinate)—water (1/15).

Its empirical formula (hemipentahydrate) is C<sub>48</sub>H<sub>55</sub>N<sub>6</sub>O<sub>8</sub>Na<sub>3</sub> 2.5 H<sub>2</sub>O. Its molecular mass is 957.99 and its schematic structural formula is:



ENTRESTO is available as film-coated tablets for oral administration, containing 24 mg of sacubitril and 26 mg of valsartan; 49 mg of sacubitril and 51 mg of valsartan; and 97 mg of sacubitril and 103 mg of valsartan. The tablet inactive ingredients are microcrystalline cellulose, low-substituted hydroxypropylcellulose, croscopovidone, magnesium stearate (vegetable origin), talc, and colloidal silicon dioxide. The film-coat inactive ingredients are hypromellose, titanium dioxide (E 171), Macrogol 4000, talc, and iron oxide red (E 172). The film-coat for the 24 mg of sacubitril and 26 mg of valsartan tablet and the 97 mg of sacubitril and 103 mg of valsartan tablet also contains iron oxide black (E 172). The film-coat for the 49 mg of sacubitril and 51 mg of valsartan tablet contains iron oxide yellow (E 172).

## 12 CLINICAL PHARMACOLOGY

### 12.1 Mechanism of Action

ENTRESTO contains a neprilysin inhibitor, sacubitril, and an angiotensin receptor blocker, valsartan. ENTRESTO inhibits neprilysin (neutral endopeptidase; NEP) via LBQ657, the active metabolite of the prodrug sacubitril, and blocks the angiotensin II type-1 (AT<sub>1</sub>) receptor via valsartan. The cardiovascular and renal effects of ENTRESTO in heart failure patients are attributed to the increased levels of peptides that are degraded by neprilysin, such as natriuretic peptides, by LBQ657, and the simultaneous inhibition of the effects of angiotensin II by valsartan. Valsartan inhibits the effects of angiotensin II by selectively blocking the AT<sub>1</sub> receptor, and also inhibits angiotensin II-dependent aldosterone release.

### 12.2 Pharmacodynamics

The pharmacodynamic effects of ENTRESTO were evaluated after single and multiple dose administrations in healthy subjects and in patients with heart failure, and are consistent with simultaneous neprilysin inhibition and renin-angiotensin system blockade. In a 7-day valsartan-controlled study in patients with reduced ejection fraction (HFrEF), administration of ENTRESTO resulted in a significant non-sustained increase in natriuresis, increased urine cGMP, and decreased plasma MR-proANP and NT-proBNP compared to valsartan.

In a 21-day study in HFrEF patients, ENTRESTO significantly increased urine ANP and cGMP and plasma cGMP, and decreased plasma NT-proBNP, aldosterone and endothelin-1. ENTRESTO also blocked the AT<sub>1</sub>-receptor as evidenced by increased plasma renin activity and plasma renin concentrations. In PARADIGM-HF, ENTRESTO decreased plasma NT-proBNP (not a neprilysin substrate) and increased plasma BNP (a neprilysin substrate) and urine cGMP compared with enalapril.

QT Prolongation: In a thorough QTc clinical study in healthy male subjects, single doses of ENTRESTO 194 mg sacubitril/206 mg valsartan and 583 mg sacubitril/617 mg valsartan had no effect on cardiac repolarization.

Amyloid- $\beta$ : Neprilysin is one of multiple enzymes involved in the clearance of amyloid- $\beta$  (A $\beta$ ) from the brain and cerebrospinal fluid (CSF). Administration of ENTRESTO 194 mg sacubitril/206 mg valsartan once-daily for 2 weeks to healthy subjects was associated with an increase in CSF A $\beta$ <sub>1-38</sub> compared to placebo; there were no changes in concentrations of CSF A $\beta$ <sub>1-40</sub> or CSF A $\beta$ <sub>1-42</sub>. The clinical relevance of this finding is unknown [see *Nonclinical Toxicology (13)*].

Blood Pressure: Addition of a 50 mg single dose of sildenafil to ENTRESTO at steady state (194 mg sacubitril/206 mg valsartan once daily for 5 days) in patients with hypertension was associated with additional blood pressure (BP) reduction (~ 5/4 mmHg, systolic/diastolic BP) compared to administration of ENTRESTO alone.

Co-administration of ENTRESTO did not significantly alter the BP effect of intravenous nitroglycerin.

### 12.3 Pharmacokinetics

#### Absorption

Following oral administration, ENTRESTO dissociates into sacubitril and valsartan. Sacubitril is further metabolized to LBQ657. The peak plasma concentrations of sacubitril, LBQ657, and valsartan are reached in 0.5 hours, 2 hours, and 1.5 hours, respectively. The oral absolute bioavailability of sacubitril is estimated to be  $\geq 60\%$ . The valsartan in ENTRESTO is more bioavailable than the valsartan in other marketed tablet formulations; 26 mg, 51 mg, and 103 mg of valsartan in ENTRESTO is equivalent to 40 mg, 80 mg, and 160 mg of valsartan in other marketed tablet formulations, respectively.

Following twice-daily dosing of ENTRESTO, steady state levels of sacubitril, LBQ657, and valsartan are reached in 3 days. At steady state, sacubitril and valsartan do not accumulate significantly, whereas LBQ657 accumulates by 1.6-fold. ENTRESTO administration with food has no clinically significant effect on the systemic exposures of sacubitril, LBQ657, or valsartan. Although there is a decrease in exposure to valsartan when ENTRESTO is administered with food, this decrease is not accompanied by a clinically significant reduction in the therapeutic effect. ENTRESTO can therefore be administered with or without food.

#### Distribution

Sacubitril, LBQ657 and valsartan are highly bound to plasma proteins (94% to 97%). Based on the comparison of plasma and CSF exposures, LBQ657 crosses the blood brain barrier to a limited extent (0.28%). The average apparent volumes of distribution of valsartan and sacubitril are 75 and 103 L, respectively.

#### Metabolism

Sacubitril is readily converted to LBQ657 by esterases; LBQ657 is not further metabolized to a significant extent. Valsartan is minimally metabolized; only about 20% of the dose is recovered as metabolites. A hydroxyl metabolite has been identified in plasma at low concentrations (< 10%).

#### Elimination

Following oral administration, 52% to 68% of sacubitril (primarily as LBQ657) and ~ 13% of valsartan and its metabolites are excreted in urine; 37% to 48% of sacubitril (primarily as LBQ657), and 86% of valsartan and its metabolites are excreted in feces. Sacubitril, LBQ657, and valsartan are eliminated from plasma with a mean elimination half-life ( $T_{1/2}$ ) of approximately 1.4 hours, 11.5 hours, and 9.9 hours, respectively.

#### Linearity/Nonlinearity

The pharmacokinetics of sacubitril, LBQ657, and valsartan were linear over an ENTRESTO dose range of 24 mg sacubitril/26 mg valsartan to 194 mg sacubitril/206 mg valsartan.

## Drug Interactions:

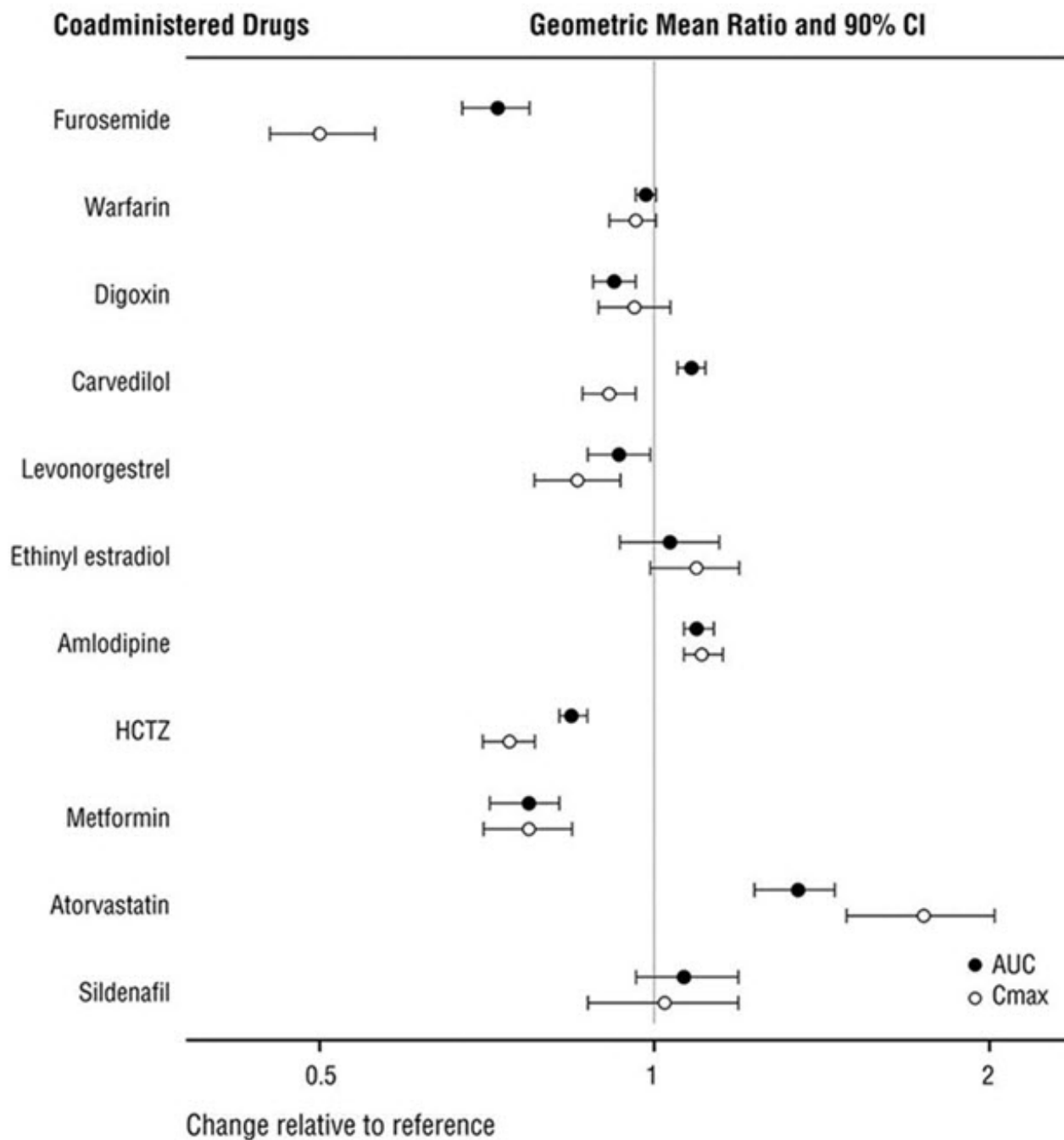
### *Effect of Co-administered Drugs on ENTRESTO:*

Because CYP450 enzyme-mediated metabolism of sacubitril and valsartan is minimal, coadministration with drugs that impact CYP450 enzymes is not expected to affect the pharmacokinetics of ENTRESTO. Dedicated drug interaction studies demonstrated that coadministration of furosemide, warfarin, digoxin, carvedilol, a combination of levonorgestrel/ethinyl estradiol, amlodipine, omeprazole, hydrochlorothiazide (HCTZ), metformin, atorvastatin, and sildenafil, did not alter the systemic exposure to sacubitril, LBQ657 or valsartan.

### *Effect of ENTRESTO on Co-administered Drugs:*

*In vitro* data indicate that sacubitril inhibits OATP1B1 and OATP1B3 transporters. The effects of ENTRESTO on the pharmacokinetics of coadministered drugs are summarized in Figure 1.

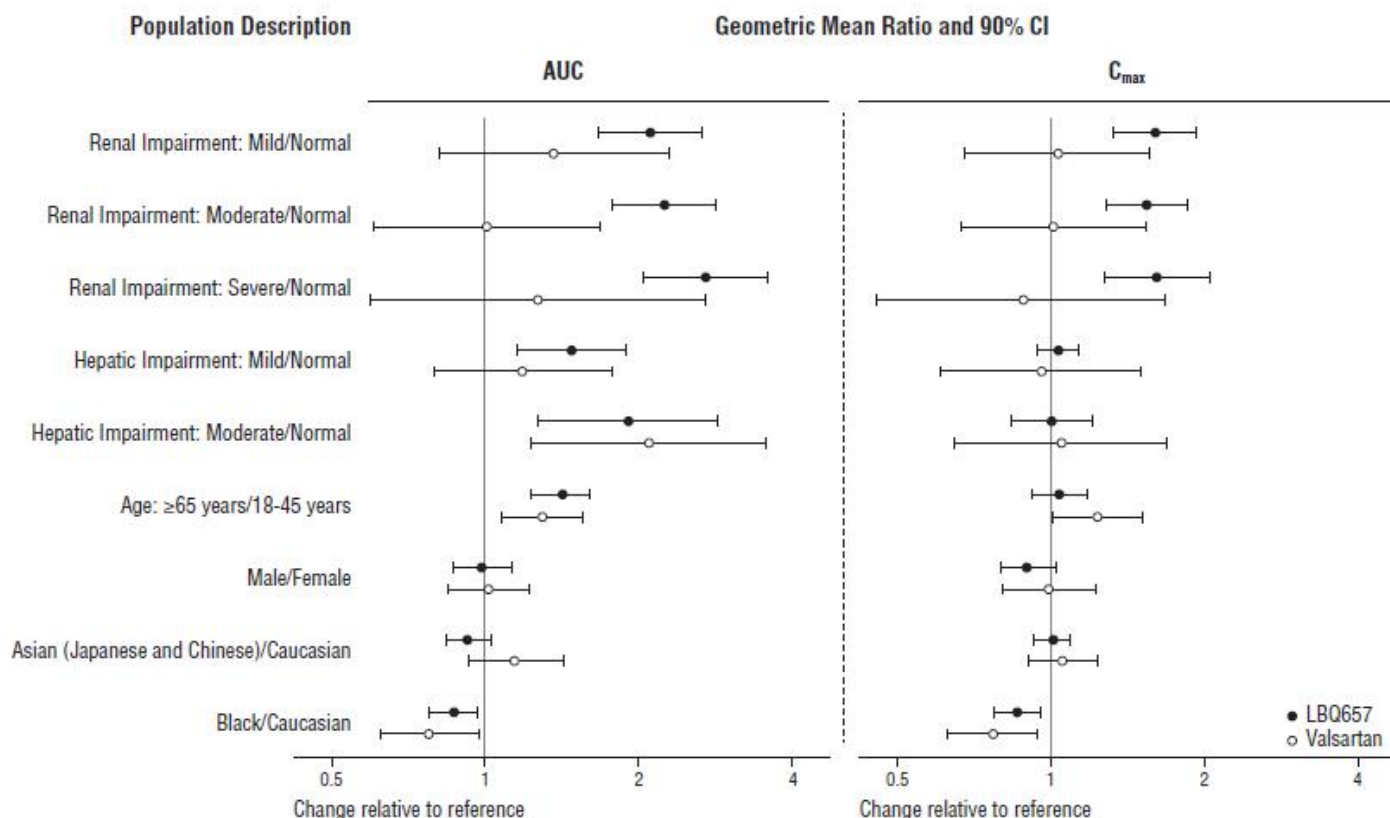
**Figure 1: Effect of ENTRESTO on Pharmacokinetics of Coadministered Drugs**



## Specific Populations

Effect of specific populations on the pharmacokinetics of LBQ657 and valsartan are shown in Figure 2.

**Figure 2: Pharmacokinetics of ENTRESTO in Specific Populations**



Note: Child-Pugh Classification was used for hepatic impairment.

## 13 NONCLINICAL TOXICOLOGY

### 13.1 Carcinogenesis, Mutagenesis, Impairment of Fertility

#### Carcinogenesis and Mutagenesis

Carcinogenicity studies conducted in mice and rats with sacubitril and valsartan did not identify any carcinogenic potential for ENTRESTO. The LBQ657  $C_{max}$  at the high dose (HD) of 1200 mg/kg/day in male and female mice was, respectively, 14 and 16 times that in humans at the MRHD. The LBQ657  $C_{max}$  in male and female rats at the HD of 400 mg/kg/day was, respectively, 1.7 and 3.5 times that at the MRHD. The doses of valsartan studied (high dose of 160 and 200 mg/kg/day in mice and rats, respectively) were about 4 and 10 times, respectively, the MRHD on a  $mg/m^2$  basis.

Mutagenicity and clastogenicity studies conducted with ENTRESTO, sacubitril, and valsartan did not reveal any effects at either the gene or chromosome level.

#### Impairment of Fertility

ENTRESTO did not show any effects on fertility in rats up to a dose of 73 mg sacubitril/77 mg valsartan/kg/day ( $\leq 1.0$ -fold and  $\leq 0.18$ -fold the MRHD on the basis of the AUCs of valsartan and LBQ657, respectively).

### 13.2 Animal Toxicology and/or Pharmacology

The effects of ENTRESTO on amyloid- $\beta$  concentrations in CSF and brain tissue were assessed in young (2 to 4 years old) cynomolgus monkeys treated with ENTRESTO (24 mg sacubitril/26 mg valsartan/kg/day) for 2 weeks. In this study, ENTRESTO affected CSF  $A\beta$  clearance, increasing CSF

A $\beta$  1-40, 1-42, and 1-38 levels in CSF; there was no corresponding increase in A $\beta$  levels in the brain. In addition, in a toxicology study in cynomolgus monkeys treated with ENTRESTO at 146 mg sacubitril/154 mg valsartan/kg/day for 39-weeks, there was no amyloid- $\beta$  accumulation in the brain.

## 14 CLINICAL STUDIES

Dosing in clinical trials was based on the total amount of both components of ENTRESTO, i.e., 24/26 mg, 49/51 mg and 97/103 mg were referred to as 50 mg, 100 mg, and 200 mg, respectively.

### PARADIGM-HF

PARADIGM-HF was a multinational, randomized, double-blind trial comparing ENTRESTO and enalapril in 8,442 adult patients with symptomatic chronic heart failure (NYHA class II–IV) and systolic dysfunction (left ventricular ejection fraction  $\leq$  40%). Patients had to have been on an ACE inhibitor or ARB for at least four weeks and on maximally tolerated doses of beta-blockers. Patients with a systolic blood pressure of  $<$  100 mmHg at screening were excluded.

The primary objective of PARADIGM-HF was to determine whether ENTRESTO, a combination of sacubitril and a RAS inhibitor (valsartan), was superior to a RAS inhibitor (enalapril) alone in reducing the risk of the combined endpoint of cardiovascular (CV) death or hospitalization for heart failure (HF).

After discontinuing their existing ACE inhibitor or ARB therapy, patients entered sequential single-blind run-in periods during which they received enalapril 10 mg twice-daily, followed by ENTRESTO 100 mg twice-daily, increasing to 200 mg twice-daily. Patients who successfully completed the sequential run-in periods were randomized to receive either ENTRESTO 200 mg (N = 4,209) twice-daily or enalapril 10 mg (N = 4,233) twice-daily. The primary endpoint was the first event in the composite of CV death or hospitalization for HF. The median follow-up duration was 27 months and patients were treated for up to 4.3 years.

The population was 66% Caucasian, 18% Asian, and 5% Black; the mean age was 64 years and 78% were male. At randomization, 70% of patients were NYHA Class II, 24% were NYHA Class III, and 0.7% were NYHA Class IV. The mean left ventricular ejection fraction was 29%. The underlying cause of heart failure was coronary artery disease in 60% of patients; 71% had a history of hypertension, 43% had a history of myocardial infarction, 37% had an eGFR  $<$  60 mL/min/1.73m<sup>2</sup>, and 35% had diabetes mellitus. Most patients were taking beta-blockers (94%), mineralocorticoid antagonists (58%), and diuretics (82%). Few patients had an implantable cardioverter-defibrillator (ICD) or cardiac resynchronization therapy-defibrillator (CRT-D) (15%).

PARADIGM-HF demonstrated that ENTRESTO, a combination of sacubitril and a RAS inhibitor (valsartan), was superior to a RAS inhibitor (enalapril), in reducing the risk of the combined endpoint of cardiovascular death or hospitalization for heart failure, based on a time-to-event analysis (hazard ratio [HR]: 0.80, 95% confidence interval [CI], 0.73, 0.87,  $p <$  0.0001). The treatment effect reflected a reduction in both cardiovascular death and heart failure hospitalization; see Table 2 and Figure 3. Sudden death accounted for 45% of cardiovascular deaths, followed by pump failure, which accounted for 26%.

ENTRESTO also improved overall survival (HR 0.84; 95% CI [0.76, 0.93],  $p =$  0.0009) (Table 2). This finding was driven entirely by a lower incidence of cardiovascular mortality on ENTRESTO.

**Table 2: Treatment Effect for the Primary Composite Endpoint, its Components, and All-cause Mortality**

	<b>ENTRESTO</b> N = 4,187 n (%)	<b>Enalapril</b> N = 4,212 n (%)	<b>Hazard Ratio</b> <b>(95% CI)</b>	<b>p-value</b>
Primary composite endpoint of cardiovascular death or heart	914 (21.8)	1,117 (26.5)	0.80 (0.73, 0.87)	$<$ 0.0001

failure hospitalization				
Cardiovascular death as first event	377 (9.0)	459 (10.9)		
Heart failure hospitalization as first event	537 (12.8)	658 (15.6)		
Number of patients with events: *				
Cardiovascular death **	558 (13.3)	693 (16.5)	0.80 (0.71, 0.89)	
Heart failure hospitalizations	537 (12.8)	658 (15.6)	0.79 (0.71, 0.89)	
All-cause mortality	711 (17.0)	835 (19.8)	0.84 (0.76, 0.93)	0.0009

\* Analyses of the components of the primary composite endpoint were not prospectively planned to be adjusted for multiplicity

\*\* Includes subjects who had heart failure hospitalization prior to death

The Kaplan-Meier curves presented below (Figure 3) show time to first occurrence of the primary composite endpoint (3A), and time to occurrence of cardiovascular death at any time (3B) and first heart failure hospitalization (3C).

**Figure 3: Kaplan-Meier Curves for the Primary Composite Endpoint (A), Cardiovascular Death (B), and Heart Failure Hospitalization (C)**

Figure A

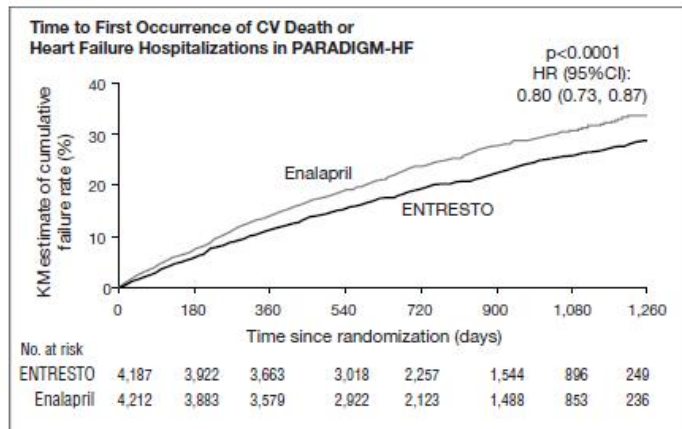


Figure B

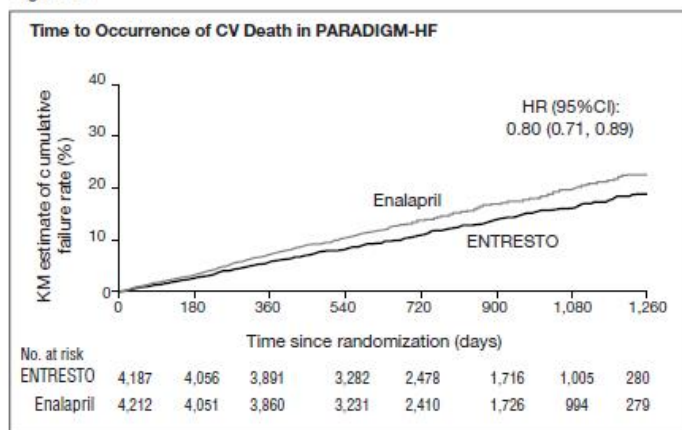
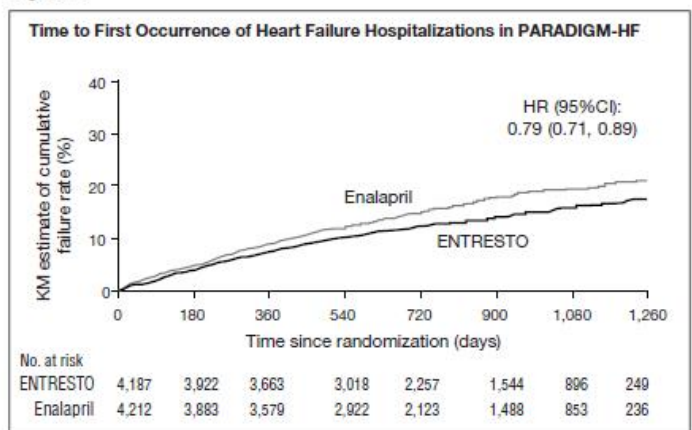


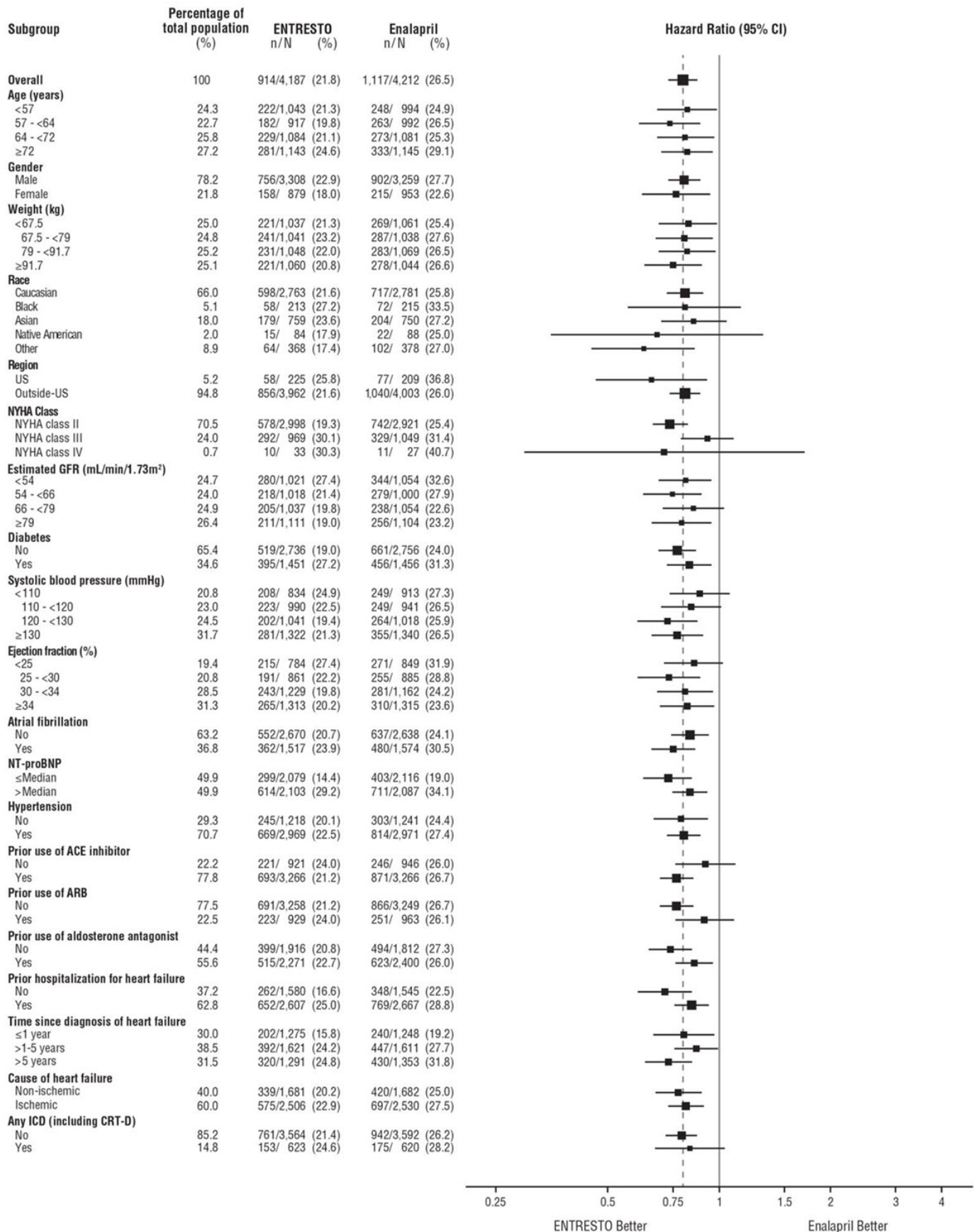
Figure C





A wide range of demographic characteristics, baseline disease characteristics, and baseline concomitant medications were examined for their influence on outcomes. The results of the primary composite endpoint were consistent across the subgroups examined (Figure 4).

**Figure 4: Primary Composite Endpoint (CV Death or HF Hospitalization) - Subgroup Analysis**





Note: The figure above presents effects in various subgroups, all of which are baseline characteristics. The 95% confidence limits that are shown do not take into account the number of comparisons made, and may not reflect the effect of a particular factor after adjustment for all other factors. Apparent homogeneity or heterogeneity among groups should not be over-interpreted.

## 16 HOW SUPPLIED/STORAGE AND HANDLING

ENTRESTO (sacubitril/valsartan) is available as unscored, ovaloid, biconvex, film-coated tablets, containing 24 mg of sacubitril and 26 mg of valsartan; 49 mg of sacubitril and 51 mg of valsartan; and 97 mg of sacubitril and 103 mg of valsartan. All strengths are packaged in bottles as described below.

Tablet	Color	Debossment	NDC # 0078-XXXX-XX	
Sacubitril/Valsartan		"NVR" and	Bottle of 60	Bottle of 180
24 mg/26 mg	Violet white	LZ	0659-20	0659-67
49 mg/51 mg	Pale yellow	L1	0777-20	0777-67
97 mg/103 mg	Light pink	L11	0696-20	0696-67

Store at 25°C (77°F) with excursions between 15°C and 30°C (59°F and 86°F) permitted [see USP Controlled Room Temperature]. Protect from moisture.

## 17 PATIENT COUNSELING INFORMATION

Advise patients to read the FDA-approved patient labeling (Patient Information).

*Pregnancy:* Advise female patients of childbearing age about the consequences of exposure to ENTRESTO during pregnancy. Discuss treatment options with women planning to become pregnant. Ask patients to report pregnancies to their physicians as soon as possible [see *Warnings and Precautions (5.1) and Use in Specific Populations (8.1)*].

*Angioedema:* Advise patients to discontinue use of their previous ACE inhibitor or ARB. Advise patients to allow a 36 hour wash-out period if switching from or to an ACE inhibitor [see *Contraindications (4) and Warnings and Precautions (5.2)*].

T2018-125

Patient Information ENTRESTO (en-TRESS-toh) (sacubitril/valsartan) tablets
<b>What is the most important information I should know about ENTRESTO?</b>
ENTRESTO can harm or cause death to your unborn baby. Talk to your doctor about other ways to treat heart failure if you plan to become pregnant. If you get pregnant while taking ENTRESTO, tell your doctor right away.
<b>What is ENTRESTO?</b>
ENTRESTO is a prescription medicine used to reduce the risk of death and hospitalization in people with certain types of long-lasting (chronic) heart failure.
ENTRESTO is usually used with other heart failure therapies, in place of an angiotensin-converting enzyme (ACE) inhibitor or other angiotensin II receptor blocker (ARB) therapy.
Heart failure occurs when the heart is weak and cannot pump enough blood to your lungs and the rest of

your body.

It is not known if ENTRESTO is safe and effective in children.

### **Who should not take ENTRESTO?**

#### **Do not take ENTRESTO if you:**

- are allergic to sacubitril or valsartan or any of the ingredients in ENTRESTO. See the end of this Patient Information leaflet for a complete list of ingredients in ENTRESTO.
- have had an allergic reaction including swelling of your face, lips, tongue, throat or trouble breathing while taking a type of medicine called an ACE inhibitor or ARB.
- take an ACE inhibitor medicine. **Do not take ENTRESTO for at least 36 hours before or after you take an ACE inhibitor medicine.** Talk with your doctor or pharmacist before taking ENTRESTO if you are not sure if you take an ACE inhibitor medicine.
- have diabetes and take a medicine that contains aliskiren.

### **What should I tell my doctor before taking ENTRESTO?**

#### **Before you take ENTRESTO, tell your doctor about all of your medical conditions, including if you:**

- have kidney or liver problems
- are pregnant or plan to become pregnant. See **“What is the most important information I should know about ENTRESTO?”**
- are breastfeeding or plan to breastfeed. It is not known if ENTRESTO passes into your breast milk. You and your doctor should decide if you will take ENTRESTO or breastfeed. You should not do both.
- have a history of hereditary angioedema.

**Tell your doctor about all the medicines you take,** including prescription and over-the-counter medicines, vitamins, and herbal supplements. Using ENTRESTO with certain other medicines may affect each other. Using ENTRESTO with other medicines can cause serious side effects. Especially tell your doctor if you take:

- potassium supplements or a salt substitute
- nonsteroidal anti-inflammatory drugs (NSAIDs)
- lithium
- other medicines for high blood pressure or heart problems such as an ACE inhibitor, ARB, or aliskiren

Keep a list of your medicines to show your doctor and pharmacist when you get a new medicine.

### **How should I take ENTRESTO?**

- Take ENTRESTO exactly as your doctor tells you to take it.
- Take ENTRESTO two times each day. Your doctor may change your dose of ENTRESTO during treatment.
- If you miss a dose, take it as soon as you remember. If it is close to your next dose, do not take the missed dose. Take the next dose at your regular time.
- If you take too much ENTRESTO, call your doctor right away.

### **What are the possible side effects of ENTRESTO?**

**ENTRESTO may cause serious side effects including:**

- See **“What is the most important information I should know about ENTRESTO?”**
- **Serious allergic reactions causing swelling of your face, lips, tongue, and throat (angioedema) that may cause trouble breathing and death.** Get emergency medical help right away if you have symptoms of angioedema or trouble breathing. Do not take ENTRESTO again if you have had angioedema while taking ENTRESTO.  
People who are Black and take ENTRESTO may have a higher risk of having angioedema than people who are not Black and take ENTRESTO.  
People who have had angioedema before taking ENTRESTO may have a higher risk of having angioedema than people who have not had angioedema before taking ENTRESTO. See **“Who should not take ENTRESTO?”**
- **Low blood pressure (hypotension).** Low blood pressure may be more common if you also take water pills. Call your doctor if you become dizzy or lightheaded, or you develop extreme fatigue.
- **Kidney problems.** Your doctor will check your kidney function during your treatment with ENTRESTO. If you have changes in your kidney function tests, you may need a lower dose of ENTRESTO or may need to stop taking ENTRESTO for a period of time.
- **Increased amount of potassium in your blood.** Your doctor will check your potassium blood level during your treatment with ENTRESTO.

These are not all the possible side effects of ENTRESTO. Call your doctor for medical advice about side effects. You may report side effects to FDA at 1-800-FDA-1088.

#### **How should I store ENTRESTO?**

- Store ENTRESTO at room temperature between 68°F to 77°F (20°C to 25°C).
- Protect ENTRESTO tablets from moisture.

**Keep ENTRESTO and all medicines out of the reach of children.**

#### **General information about the safe and effective use of ENTRESTO**

Medicines are sometimes prescribed for purposes other than those listed in a Patient Information leaflet. Do not use ENTRESTO for a condition for which it was not prescribed. Do not give ENTRESTO to other people, even if they have the same symptoms that you have. It may harm them.

This Patient Information leaflet summarizes the most important information about ENTRESTO. If you would like more information, talk with your doctor. You can ask your doctor or pharmacist for information about ENTRESTO that is written for health professionals.

For more information, go to [www.ENTRESTO.com](http://www.ENTRESTO.com) or call 1-888-368-7378 (1-888-ENTRESTO).

#### **What are the ingredients in ENTRESTO?**

**Active ingredients:** sacubitril and valsartan

**Inactive ingredients:** microcrystalline cellulose, low-substituted hydroxypropylcellulose, crospovidone, magnesium stearate (vegetable origin), talc, and colloidal silicon dioxide. Film coat: hypromellose, titanium dioxide (E 171), Macrogol 4000, talc, iron oxide red (E 172). The film-coat for the 24 mg of sacubitril and 26 mg of valsartan tablet and the 97 mg of sacubitril and 103 mg of valsartan tablet also contains iron oxide black (E 172). The film-coat for the 49 mg of sacubitril and 51 mg of valsartan tablet contains iron oxide yellow (E 172).

Distributed by: Novartis Pharmaceuticals Corporation East Hanover, New Jersey 07936

© Novartis

T2018-126

ENTRESTO is a registered trademark of Novartis AG

This Patient Information has been approved by the U.S. Food and Drug Administration  
Revised: November 2018

## PRINCIPAL DISPLAY PANEL

**NDC 0078-0659-20**

Entresto®

(sacubitril/valsartan) tablets

24 mg / 26 mg

Rx only

60 Tablets

Novartis



## PRINCIPAL DISPLAY PANEL

**NDC 0078-0777-20**

Entresto®

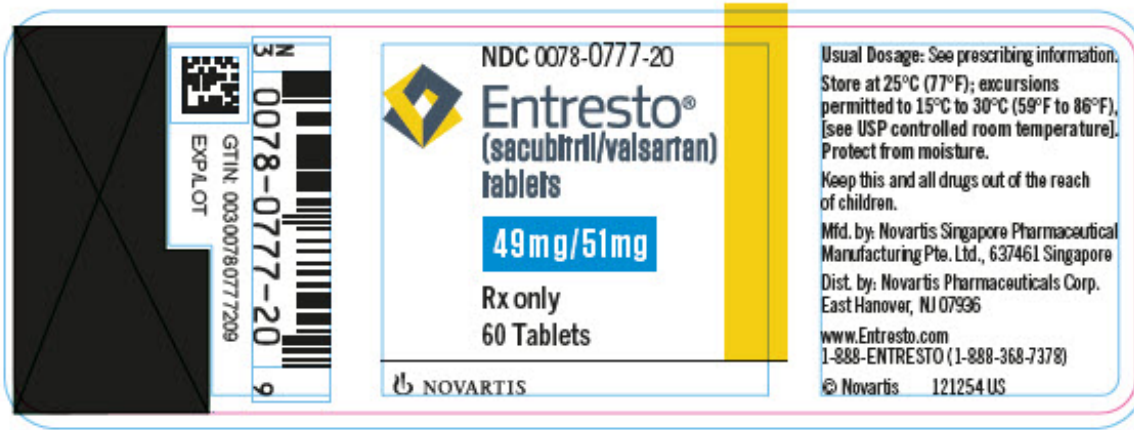
(sacubitril/valsartan) tablets

49 mg / 51 mg

Rx only

60 Tablets

Novartis



## PRINCIPAL DISPLAY PANEL

NDC 0078-0696-20

Entresto®

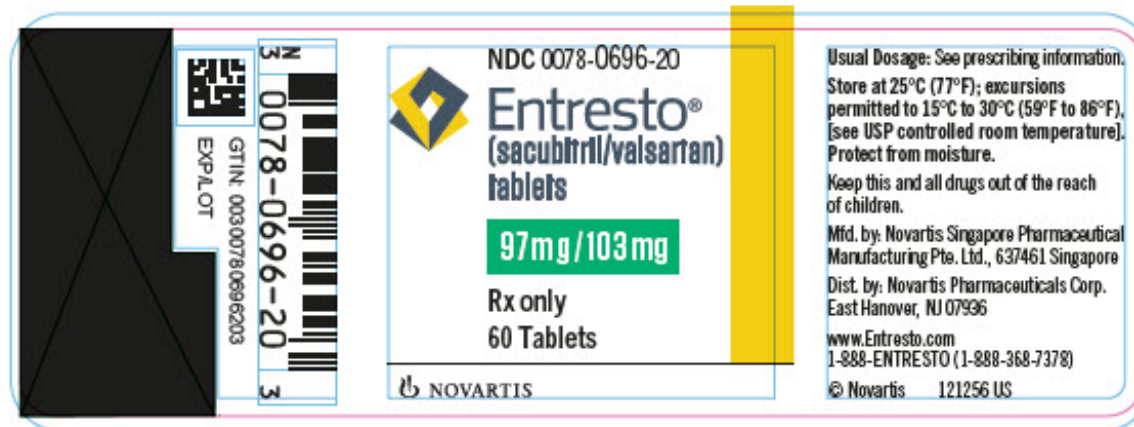
(sacubitril/valsartan) tablets

97 mg / 103 mg

Rx only

60 Tablets

Novartis



## ENTRESTO

sacubitril and valsartan tablet, film coated

### Product Information

Product Type	HUMAN PRESCRIPTION DRUG	Item Code (Source)	NDC:0078-0659
Route of Administration	ORAL		

### Active Ingredient/Active Moiety

Ingredient Name	Basis of Strength	Strength
-----------------	-------------------	----------

SACUBITRIL (UNII: 17ERJ0MKG1) (SACUBITRILAT - UNII:SP5PBF81S)	SACUBITRIL	24 mg
VALSARTAN (UNII: 80M03YXJ7I) (VALSARTAN - UNII:80M03YXJ7I)	VALSARTAN	26 mg

### Inactive Ingredients

Ingredient Name	Strength
CELLULOSE, MICROCRYSTALLINE (UNII: OP1R32D61U)	
CROSPVIDONE (UNII: 68401960MK)	
MAGNESIUM STEARATE (UNII: 70097M6I30)	
TALC (UNII: 7SEV7J4R1U)	
SILICON DIOXIDE (UNII: ETJ7Z6XBU4)	
HYDROXYPROPYL CELLULOSE, LOW SUBSTITUTED (UNII: 2165RE0K14)	
HYPROMELLOSES (UNII: 3NXW29V3WO)	
TITANIUM DIOXIDE (UNII: 15FIX9V2JP)	
POLYETHYLENE GLYCOL 4000 (UNII: 4R4HF16D95)	
FERRIC OXIDE RED (UNII: 1K09F3G675)	
FERROSFERRIC OXIDE (UNII: XM0M87F357)	

### Product Characteristics

<b>Color</b>	WHITE (Violet white)	<b>Score</b>	no score
<b>Shape</b>	OVAL (ovaloid biconvex)	<b>Size</b>	13mm
<b>Flavor</b>		<b>Imprint Code</b>	NVR;LZ
<b>Contains</b>			

### Packaging

#	Item Code	Package Description	Marketing Start Date	Marketing End Date
1	NDC:0078-0659-20	60 in 1 BOTTLE; Type 0: Not a Combination Product	07/07/2015	
2	NDC:0078-0659-67	180 in 1 BOTTLE; Type 0: Not a Combination Product	07/07/2015	
3	NDC:0078-0659-35	100 in 1 BOX, UNIT-DOSE	07/07/2015	12/31/2020
3	NDC:0078-0659-61	1 in 1 BLISTER PACK; Type 0: Not a Combination Product		

### Marketing Information

Marketing Category	Application Number or Monograph Citation	Marketing Start Date	Marketing End Date
NDA	NDA207620	07/07/2015	

## ENTRESTO

sacubitril and valsartan tablet, film coated

### Product Information

<b>Product Type</b>	HUMAN PRESCRIPTION DRUG	<b>Item Code (Source)</b>	NDC:0078-0777
<b>Route of Administration</b>	ORAL		

**Active Ingredient/Active Moiety**

Ingredient Name	Basis of Strength	Strength
SACUBITRIL (UNII: 17ERJ0MKG1) (SACUBITRILAT - UNII:SPI5PBF81S)	SACUBITRIL	49 mg
VALSARTAN (UNII: 80M03YXJ7I) (VALSARTAN - UNII:80M03YXJ7I)	VALSARTAN	51 mg

**Inactive Ingredients**

Ingredient Name	Strength
CELLULOSE, MICROCRYSTALLINE (UNII: OP1R32D61U)	
CROSPVIDONE (UNII: 68401960MK)	
MAGNESIUM STEARATE (UNII: 70097M6I30)	
TALC (UNII: 7SEV7J4R1U)	
SILICON DIOXIDE (UNII: ETJ7Z6XBU4)	
HYDROXYPROPYL CELLULOSE, LOW SUBSTITUTED (UNII: 2165RE0K14)	
HYPROMELLOSES (UNII: 3NXW29V3WO)	
TITANIUM DIOXIDE (UNII: 15FIX9V2JP)	
POLYETHYLENE GLYCOL 4000 (UNII: 4R4HF16D95)	
FERRIC OXIDE RED (UNII: 1K09F3G675)	
FERRIC OXIDE YELLOW (UNII: EX438O2MRT)	

**Product Characteristics**

Color	YELLOW (Pale yellow)	Score	no score
Shape	OVAL	Size	13mm
Flavor		Imprint Code	NVR;L1
Contains			

**Packaging**

#	Item Code	Package Description	Marketing Start Date	Marketing End Date
1	NDC:0078-0777-20	60 in 1 BOTTLE; Type 0: Not a Combination Product	07/07/2015	
2	NDC:0078-0777-67	180 in 1 BOTTLE; Type 0: Not a Combination Product	07/07/2015	
3	NDC:0078-0777-35	100 in 1 BOX, UNIT-DOSE	07/07/2015	05/31/2020
3	NDC:0078-0777-61	1 in 1 BLISTER PACK; Type 0: Not a Combination Product		

**Marketing Information**

Marketing Category	Application Number or Monograph Citation	Marketing Start Date	Marketing End Date
NDA	NDA207620	07/07/2015	

**ENTRESTO**

sacubitril and valsartan tablet, film coated

**Product Information**

Product Type	HUMAN PRESCRIPTION DRUG	Item Code (Source)	NDC:0078-0696
Route of Administration	ORAL		

**Active Ingredient/Active Moiety**

Ingredient Name	Basis of Strength	Strength
SACUBITRIL (UNII: 17ERJ0MKG1) (SACUBITRILAT - UNII:SP15PBF81S)	SACUBITRIL	97 mg
VALSARTAN (UNII: 80M03YXJ7I) (VALSARTAN - UNII:80M03YXJ7I)	VALSARTAN	103 mg

**Inactive Ingredients**

Ingredient Name	Strength
CELLULOSE, MICROCRYSTALLINE (UNII: OP1R32D61U)	
CROSPVIDONE (UNII: 68401960MK)	
MAGNESIUM STEARATE (UNII: 70097M6I30)	
TALC (UNII: 7SEV7J4R1U)	
SILICON DIOXIDE (UNII: ETJ7Z6XBU4)	
HYDROXYPROPYL CELLULOSE, LOW SUBSTITUTED (UNII: 2165RE0K14)	
HYPROMELLOSES (UNII: 3NXW29V3WO)	
TITANIUM DIOXIDE (UNII: 15FIX9V2JP)	
POLYETHYLENE GLYCOL 4000 (UNII: 4R4HF16D95)	
FERRIC OXIDE RED (UNII: 1K09F3G675)	
FERROSFERRIC OXIDE (UNII: XM0M87F357)	

**Product Characteristics**

Color	PINK (Light pink)	Score	no score
Shape	OVAL	Size	15mm
Flavor		Imprint Code	NVR;L11
Contains			

**Packaging**

#	Item Code	Package Description	Marketing Start Date	Marketing End Date
1	NDC:0078-0696-20	60 in 1 BOTTLE; Type 0: Not a Combination Product	07/07/2015	
2	NDC:0078-0696-67	180 in 1 BOTTLE; Type 0: Not a Combination Product	07/07/2015	
3	NDC:0078-0696-35	100 in 1 BOX, UNIT-DOSE	07/07/2015	06/30/2020
3	NDC:0078-0696-61	1 in 1 BLISTER PACK; Type 0: Not a Combination Product		

**Marketing Information**

Marketing Category	Application Number or Monograph Citation	Marketing Start Date	Marketing End Date
NDA	NDA207620	07/07/2015	

**Labeler** - Novartis Pharmaceuticals Corporation (002147023)