

SUPRAX- cefixime tablet
Bryant Ranch Prepack

SUPRAX
CEFIXIME TABLETS USP, 400 mg
CEFIXIME FOR ORAL SUSPENSION USP, 100 mg/5 mL
CEFIXIME FOR ORAL SUSPENSION USP, 200 mg/5 mL

Rx only

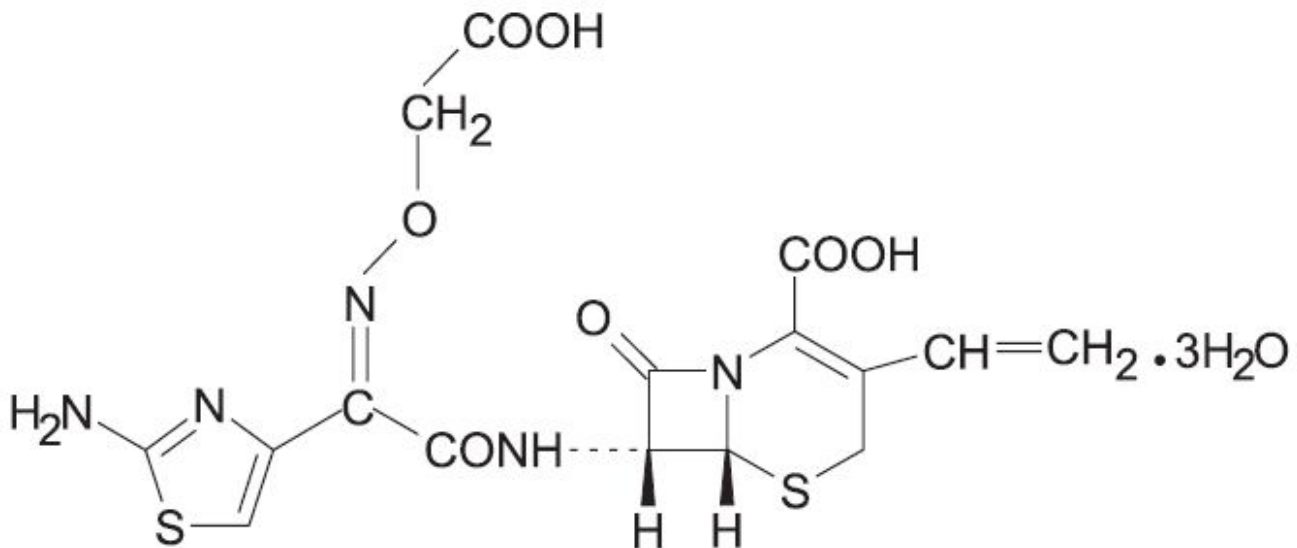
To reduce the development of drug-resistant bacteria and maintain the effectiveness of Suprax (cefixime) and other antibacterial drugs, Suprax should be used only to treat or prevent infections that are proven or strongly suspected to be caused by bacteria.

DESCRIPTION

Suprax (cefixime) is a semisynthetic, cephalosporin antibiotic for oral administration. Chemically, it is (6*R*,7*R*)-7-[2-(2-Amino-4-thiazolyl)glyoxylamido]-8-oxo-3-vinyl-5-thia-1-azabicyclo[4.2.0]oct-2-ene-2-carboxylic acid, 7²-(*Z*)-[*O*-(carboxymethyl) oxime] trihydrate.

Molecular weight = 507.50 as the trihydrate. Chemical Formula is C₁₆H₁₅N₅O₇S₂.3H₂O

The structural formula for cefixime is:



Suprax is available for oral administration as 400 mg film coated tablets and as powder for oral suspension which when reconstituted provides either 100 mg/5 mL or 200 mg/5 mL of cefixime as trihydrate.

Inactive ingredients contained in the 400 mg tablets are: dibasic calcium phosphate, hypromellose, titanium dioxide, lactose monohydrate, polyethylene glycol, triacetin, magnesium stearate, microcrystalline cellulose and pregelatinized starch.

The powder for oral suspension contains the following inactive ingredients: strawberry flavor, sodium benzoate, sucrose, colloidal silicon dioxide and xanthan gum.

CLINICAL PHARMACOLOGY

Suprax, given orally, is about 40%-50% absorbed whether administered with or without food; however, time to maximal absorption is increased approximately 0.8 hours when administered with food. A single 200 mg tablet of cefixime produces an average peak serum concentration of

approximately 2 mcg/mL (range 1 to 4 mcg/mL); a single 400 mg tablet produces an average peak concentration of approximately 3.7 mcg /mL (range 1.3 to 7.7 mcg /mL). The oral suspension produces average peak concentrations approximately 25%-50% higher than the tablets, when tested in normal *adult* volunteers. Two hundred and 400 mg doses of oral suspension produce average peak concentrations of 3 mcg/mL (range 1 to 4.5 mcg/mL) and 4.6 mcg/mL (range 1.9 to 7.7 mcg/mL), respectively, when tested in normal *adult* volunteers. The area under the time versus concentration curve is greater by approximately 10%-25% with the oral suspension than with the tablet after doses of 100 to 400 mg, when tested in normal *adult* volunteers. This increased absorption should be taken into consideration if the oral suspension is to be substituted for the tablet. Because of the lack of bioequivalence, tablets should not be substituted for oral suspension in the treatment of otitis media. (See **DOSAGE AND ADMINISTRATION**). Cross-over studies of tablet versus suspension have not been performed in children.

Peak serum concentrations occur between 2 and 6 hours following oral administration of a single 200 mg tablet, a single 400 mg tablet or 400 mg of cefixime suspension. Peak serum concentrations occur between 2 and 5 hours following a single administration of 200 mg of suspension.

TABLE

Serum Levels of Cefixime after Administration of Tablets (mcg/mL)							
DOSE	1h	2h	4h	6h	8h	12h	24h
100 mg	0.3	0.8	1	0.7	0.4	0.2	0.02
200 mg	0.7	1.4	2	1.5	1	0.4	0.03
400 mg	1.2	2.5	3.5	2.7	1.7	0.6	0.04
Serum Levels of Cefixime after Administration of Oral Suspension (mcg/mL)							
DOSE	1h	2h	4h	6h	8h	12h	24h
100 mg	0.7	1.1	1.3	0.9	0.6	0.2	0.02
200 mg	1.2	2.1	2.8	2	1.3	0.5	0.07
400 mg	1.8	3.3	4.4	3.3	2.2	0.8	0.07

Approximately 50% of the absorbed dose is excreted unchanged in the urine in 24 hours. In animal studies, it was noted that cefixime is also excreted in the bile in excess of 10% of the administered dose. Serum protein binding is concentration independent with a bound fraction of approximately 65%. In a multiple dose study conducted with a research formulation which is less bioavailable than the tablet or suspension, there was little accumulation of drug in serum or urine after dosing for 14 days. The serum half-life of cefixime in healthy subjects is independent of dosage form and averages 3-4 hours but may range up to 9 hours in some normal volunteers. Average AUCs at steady state in elderly patients are approximately 40% higher than average AUCs in other healthy adults.

In subjects with moderate impairment of renal function (20 to 40 mL/min creatinine clearance), the average serum half-life of cefixime is prolonged to 6.4 hours. In severe renal impairment (5 to 20 mL/min creatinine clearance), the half-life increased to an average of 11.5 hours. The drug is not cleared significantly from the blood by hemodialysis or peritoneal dialysis. However, a study indicated that with doses of 400 mg, patients undergoing hemodialysis have similar blood profiles as subjects with creatinine clearances of 21-60 mL/min. There is no evidence of metabolism of cefixime *in vivo*.

Adequate data on CSF levels of cefixime are not available.

Microbiology

As with other cephalosporins, bactericidal action of cefixime results from inhibition of cell-wall synthesis. Cefixime is highly stable in the presence of beta-lactamase enzymes. As a result, many organisms resistant to penicillins and some cephalosporins due to the presence of beta-lactamases, may be susceptible to cefixime. Cefixime has been shown to be active against most strains of the following organisms both *in vitro* and in clinical infections (see **INDICATIONS AND USAGE**):

Gram-positive Organisms.

Streptococcus pneumoniae,

Streptococcus pyogenes.

Gram-negative Organisms.

Haemophilus influenzae

(beta-lactamase positive and negative strains),

Moraxella (Branhamella) catarrhalis

(most of which are beta-lactamase positive),

Escherichia coli,

Proteus mirabilis,

Neisseria gonorrhoeae

(including penicillinase- and non-penicillinase-producing strains).

Cefixime has been shown to be active *in vitro* against most strains of the following organisms; however, clinical efficacy has not been established.

Gram-positive Organisms.

Streptococcus agalactiae.

Gram-negative Organisms.

Haemophilus parainfluenzae

(beta-lactamase positive and negative strains),

Proteus vulgaris,

Klebsiella pneumoniae,

Klebsiella oxytoca,

Pasteurella multocida,

Providencia species,

Salmonella species,

Shigella species,

Citrobacter amalonaticus,

Citrobacter diversus,

Serratia marcescens.

Note: *Pseudomonas* species, strains of group D streptococci (including enterococci), *Listeria monocytogenes*, most strains of staphylococci (including methicillin-resistant strains) and most strains of *Enterobacter* are resistant to cefixime. In addition, most strains of *Bacteroides fragilis* and *Clostridia* are resistant to cefixime.

Susceptibility Testing

Susceptibility Tests:

Diffusion Techniques

Quantitative methods that require measurement of zone diameters give an estimate of antibiotic susceptibility. One such procedure¹⁻³ has been recommended for use with disks to test susceptibility to cefixime. Interpretation involves correlation of the diameters obtained in the disk test with minimum inhibitory concentration (MIC) for cefixime.

Reports from the laboratory giving results of the standard single-disk susceptibility test with a 5-mcg cefixime disk should be interpreted according to the following criteria:

Recommended Susceptibility Ranges : Agar Disk Diffusion			
Organisms	Resistant	Moderately Susceptible	Susceptible
<i>Neisseria gonorrhoeae</i> *	--	--	≥ 31 mm
All other organisms	≤ 15 mm	16 - 18 mm	≥ 19 mm

* Using GC Agar Base with a defined 1% supplement without cysteine.

A report of "Susceptible" indicates that the pathogen is likely to be inhibited by generally achievable blood levels. A report of "Moderately Susceptible" indicates that inhibitory concentrations of the antibiotic may well be achieved if high dosage is used or if the infection is confined to tissues and fluids (e.g., urine) in which high antibiotic levels are attained. A report of "Resistant" indicates that achievable concentrations of the antibiotic are unlikely to be inhibitory and other therapy should be selected.

Standardized procedures require the use of laboratory control organisms. The 5-mcg disk should give the following zone diameter:

Organism	Zone diameter (mm)
<i>E. coli</i> ATCC 25922	23-27
<i>N. gonorrhoeae</i> ATCC 49226*	37-45

* Using GC Agar Base with a defined 1% supplement without cysteine.

The class disk for cephalosporin susceptibility testing (the cephalothin disk) is not appropriate because of spectrum differences with cefixime. The 5-mcg cefixime disk should be used for all *in vitro* testing of isolates.

Dilution Techniques

Broth or agar dilution methods can be used to determine the minimum inhibitory concentration (MIC) value for susceptibility of bacterial isolates to cefixime. The recommended susceptibility breakpoints are as follows:

MIC Interpretive Standards (mcg/mL)			
Organisms	Resistant	Moderately Susceptible	Susceptible
<i>Neisseria gonorrhoeae</i> *	--	--	≤ 0.25
All other organisms	≥ 4	2	≤ 1

* Using GC Agar Base with a defined 1% supplement without cysteine.

As with standard diffusion methods, dilution procedures require the use of laboratory control organisms. Standard cefixime powder should give the following MIC ranges in daily testing of quality control organisms:

Organism	MIC range (mcg/mL)
<i>E. coli</i> ATCC 25922	0.25-1
<i>S. aureus</i> ATCC 29213	8-32
<i>N. gonorrhoeae</i> ATCC 49226*	0.008-0.03

* Using GC Agar Base with a defined 1% supplement without cysteine.

INDICATIONS AND USAGE

To reduce the development of drug resistant bacteria and maintain the effectiveness of Suprax (cefixime) and other antibacterial drugs, Suprax should be used only to treat or prevent infections that are proven or strongly suspected to be caused by susceptible bacteria. When culture and susceptibility

information are available, they should be considered in selecting or modifying antimicrobial therapy. In the absence of such data, local epidemiology and susceptibility patterns may contribute to the empiric selection of therapy.

Suprax is indicated in the treatment of the following infections when caused by susceptible strains of the designated microorganisms:

Uncomplicated Urinary Tract Infections caused by *Escherichia coli* and *Proteus mirabilis*.

Otitis Media caused by *Haemophilus influenzae* (beta-lactamase positive and negative strains), *Moraxella (Branhamella) catarrhalis*, (most of which are beta-lactamase positive) and *S. pyogenes**.

Note: For information on *otitis media* caused by *Streptococcus pneumoniae*, see **CLINICAL STUDIES** section.

Pharyngitis and *Tonsillitis*, caused by *S. pyogenes*.

Note: Penicillin is the usual drug of choice in the treatment of *S. pyogenes* infections, including the prophylaxis of rheumatic fever. Suprax is generally effective in the eradication of *S. pyogenes* from the nasopharynx; however, data establishing the efficacy of Suprax in the subsequent prevention of rheumatic fever are not available.

Acute Bronchitis and *Acute Exacerbations of Chronic Bronchitis*, caused by *Streptococcus pneumoniae* and *Haemophilus influenzae* (beta-lactamase positive and negative strains).

Uncomplicated gonorrhea (cervical/urethral), caused by *Neisseria gonorrhoeae* (penicillinase- and non-penicillinase- producing strains).

Appropriate cultures and susceptibility studies should be performed to determine the causative organism and its susceptibility to cefixime; however, therapy may be started while awaiting the results of these studies. Therapy should be adjusted, if necessary, once these results are known.

* Efficacy for this organism in this organ system was studied in fewer than 10 infections.

CLINICAL STUDIES

In clinical trials of otitis media in nearly 400 children between the ages of 6 months to 10 years, *Streptococcus pneumoniae* was isolated from 47% of the patients, *Haemophilus influenzae* from 34%, *Moraxella (Branhamella) catarrhalis* from 15% and *S. pyogenes* from 4%.

The overall response rate of *Streptococcus pneumoniae* to cefixime was approximately 10% lower and that of *Haemophilus influenzae* or *Moraxella (Branhamella) catarrhalis* approximately 7% higher (12% when beta-lactamase positive strains of *H. influenzae* are included) than the response rates of these organisms to the active control drugs.

In these studies, patients were randomized and treated with either cefixime at dose regimens of 4 mg/kg BID or 8 mg/kg QD, or with a standard antibiotic regimen. Sixty-nine to 70% of the patients in each group had resolution of signs and symptoms of otitis media when evaluated 2 to 4 weeks post-treatment, but persistent effusion was found in 15% of the patients. When evaluated at the completion of therapy, 17% of patients receiving cefixime and 14% of patients receiving effective comparative drugs (18% including those patients who had *Haemophilus influenzae* resistant to the control drug and who received the control antibiotic) were considered to be treatment failures. By the 2 to 4 week follow-up, a total of 30%-31% of patients had evidence of either treatment failure or recurrent disease.

Bacteriological Outcome of Otitis Media at Two to Four Weeks Post-Therapy Based on Repeat Middle Ear Fluid Culture or Extrapolation from Clinical Outcome			
Organism	Cefixime(a) 4 mg/kg BID	Cefixime(a) 8 mg/kg QD	Control(a) drugs
<i>Streptococcus pneumoniae</i>	48/70 (69%)	18/22 (82%)	82/100 (82%)
<i>Haemophilus influenzae</i> beta-lactamase negative	24/34 (71%)	13/17 (76%)	23/34 (68%)
<i>Haemophilus influenzae</i> beta-	17/22 (77%)	9/12 (75%)	1/1 (b)

lactamase positive			
<i>Moraxella (Branhamella) catarrhalis</i>	26/31 (84%)	5/5	18/24 (75%)
<i>S. pyogenes</i>	5/5	3/3	6/7
All Isolates	120/162 (74%)	48/59 (81%)	130/166 (78%)

(a) Number eradicated/number isolated.

(b) An additional 20 beta-lactamase positive strains of *Haemophilus influenzae* were isolated, but were excluded from this analysis because they were resistant to the control antibiotic. In nineteen of these, the clinical course could be assessed and a favorable outcome occurred in 10. When these cases are included in the overall bacteriological evaluation of therapy with the control drugs, 140/185 (76%) of pathogens were considered to be eradicated.

CONTRAINDICATIONS

Suprax is contraindicated in patients with known allergy to the cephalosporin group of antibiotics.

WARNINGS

BEFORE THERAPY WITH SUPRAX IS INSTITUTED, CAREFUL INQUIRY SHOULD BE MADE TO DETERMINE WHETHER THE PATIENT HAS HAD PREVIOUS HYPERSENSITIVITY REACTIONS TO CEPHALOSPORINS, PENICILLINS, OR OTHER DRUGS. IF THIS PRODUCT IS TO BE GIVEN TO PENICILLIN-SENSITIVE PATIENTS, CAUTION SHOULD BE EXERCISED BECAUSE CROSS HYPERSENSITIVITY AMONG BETA-LACTAM ANTIBIOTICS HAS BEEN CLEARLY DOCUMENTED AND MAY OCCUR IN UP TO 10% OF PATIENTS WITH A HISTORY OF PENICILLIN ALLERGY. IF AN ALLERGIC REACTION TO SUPRAX OCCURS, DISCONTINUE THE DRUG. SERIOUS ACUTE HYPERSENSITIVITY REACTIONS MAY REQUIRE TREATMENT WITH EPINEPHRINE AND OTHER EMERGENCY MEASURES, INCLUDING OXYGEN, INTRAVENOUS FLUIDS, INTRAVENOUS ANTIHISTAMINES, CORTICOSTEROIDS, PRESSOR AMINES AND AIRWAY MANAGEMENT, AS CLINICALLY INDICATED.

Anaphylactic/anaphylactoid reactions (including shock and fatalities) have been reported with the use of cefixime.

Antibiotics, including Suprax, should be administered cautiously to any patient who has demonstrated some form of allergy, particularly to drugs.

Treatment with broad spectrum antibiotics, including Suprax, alters the normal flora of the colon and may permit overgrowth of clostridia. Studies indicate that a toxin produced by *Clostridium difficile* is a primary cause of severe antibiotic-associated diarrhea including pseudomembranous colitis.

Pseudomembranous colitis has been reported with the use of Suprax and other broad-spectrum antibiotics (including macrolides, semisynthetic penicillins, and cephalosporins); therefore, it is important to consider this diagnosis in patients who develop diarrhea in association with the use of antibiotics. Symptoms of pseudomembranous colitis may occur during or after antibiotic treatment and may range in severity from mild to life-threatening. Mild cases of pseudomembranous colitis usually respond to drug discontinuation alone. In moderate to severe cases, management should include fluids, electrolytes, and protein supplementation. If the colitis does not improve after the drug has been discontinued, or if the symptoms are severe, oral vancomycin is the drug of choice for antibiotic-associated pseudomembranous colitis produced by *C. difficile*. Other causes of colitis should be excluded.

PRECAUTIONS

General

Prescribing Suprax (Cefixime) in the absence of a proven or strongly suspected bacterial infection of a prophylactic indication is unlikely to provide benefit to the patient and increases the risk of the

development of drug-resistant bacteria.

The possibility of the emergence of resistant organisms which might result in overgrowth should be kept in mind, particularly during prolonged treatment. In such use, careful observation of the patient is essential. If superinfection occurs during therapy, appropriate measures should be taken.

The dose of Suprax should be adjusted in patients with renal impairment as well as those undergoing continuous ambulatory peritoneal dialysis (CAPD) and hemodialysis (HD). Patients on dialysis should be monitored carefully. (See **DOSAGE AND ADMINISTRATION.**)

Suprax should be prescribed with caution in individuals with a history of gastrointestinal disease, particularly colitis.

Cephalosporins may be associated with a fall in prothrombin activity. Those at risk include patients with renal or hepatic impairment, or poor nutritional state, as well as patients receiving a protracted course of antimicrobial therapy, and patients previously stabilized on anticoagulant therapy. Prothrombin time should be monitored in patients at risk and exogenous vitamin K administered as indicated.

Information for Patients

Patients should be counseled that antibacterial drugs, including Suprax, should only be used to treat bacterial infections. They do not treat viral infections (e.g., the common cold). When Suprax is prescribed to treat a bacterial infection, patients should be told that although it is common to feel better early in the course of therapy, the medication should be taken exactly as directed. Skipping doses or not completing the full course of therapy may: (1) decrease the effectiveness of the immediate treatment and (2) increase the likelihood that bacteria will develop resistance and will not be treatable by Suprax or other antibacterial drugs in the future.

Drug Interactions

Carbamazepine: Elevated carbamazepine levels have been reported in postmarketing experience when cefixime is administered concomitantly. Drug monitoring may be of assistance in detecting alterations in carbamazepine plasma concentrations.

Warfarin and Anticoagulants: Increased prothrombin time, with or without clinical bleeding, has been reported when cefixime is administered concomitantly.

Drug/Laboratory Test Interactions

A false-positive reaction for ketones in the urine may occur with tests using nitroprusside but not with those using nitroferricyanide.

The administration of cefixime may result in a false-positive reaction for glucose in the urine using Clinitest^{®**}, Benedict's solution, or Fehling's solution. It is recommended that glucose tests based on enzymatic glucose oxidase reactions (such as Clinistix^{®**} or TesTape^{®**}) be used. A false-positive direct Coombs test has been reported during treatment with other cephalosporin antibiotics; therefore, it should be recognized that a positive Coombs test may be due to the drug.

Carcinogenesis, Mutagenesis, Impairment of Fertility

Lifetime studies in animals to evaluate carcinogenic potential have not been conducted. Cefixime did not cause point mutations in bacteria or mammalian cells, DNA damage, or chromosome damage *in vitro* and did not exhibit clastogenic potential *in vivo* in the mouse micronucleus test. In rats, fertility and reproductive performance were not affected by cefixime at doses up to 125 times the adult therapeutic dose.

Usage in Pregnancy

Pregnancy Category B. Reproduction studies have been performed in mice and rats at doses up to 400 times the human dose and have revealed no evidence of harm to the fetus due to cefixime. There are no adequate and well-controlled studies in pregnant women. Because animal reproduction studies are not always predictive of human response, this drug should be used during pregnancy only if clearly needed.

Labor and Delivery

Cefixime has not been studied for use during labor and delivery. Treatment should only be given if clearly needed.

Nursing Mothers

It is not known whether cefixime is excreted in human milk. Consideration should be given to discontinuing nursing temporarily during treatment with this drug.

Pediatric Use

Safety and effectiveness of cefixime in children aged less than six months old have not been established.

The incidence of gastrointestinal adverse reactions, including diarrhea and loose stools, in the pediatric patients receiving the suspension, was comparable to the incidence seen in adult patients receiving tablets.

ADVERSE REACTIONS

Most of adverse reactions observed in clinical trials were of a mild and transient nature. Five percent (5%) of patients in the U.S. trials discontinued therapy because of drug-related adverse reactions. The most commonly seen adverse reactions in U.S. trials of the tablet formulation were gastrointestinal events, which were reported in 30% of adult patients on either the BID or the QD regimen. Clinically mild gastrointestinal side effects occurred in 20% of all patients, moderate events occurred in 9% of all patients and severe adverse reactions occurred in 2% of all patients. Individual event rates included diarrhea 16%, loose or frequent stools 6%, abdominal pain 3%, nausea 7%, dyspepsia 3%, and flatulence 4%. The incidence of gastrointestinal adverse reactions, including diarrhea and loose stools, in pediatric patients receiving the suspension was comparable to the incidence seen in adult patients receiving tablets.

These symptoms usually responded to symptomatic therapy or ceased when cefixime was discontinued.

Several patients developed severe diarrhea and/or documented pseudomembranous colitis, and a few required hospitalization.

The following adverse reactions have been reported following the use of cefixime. Incidence rates were less than 1 in 50 (less than 2%), except as noted above for gastrointestinal events.

Gastrointestinal (see above): Diarrhea, loose stools, abdominal pain, dyspepsia, nausea, and vomiting. Several cases of documented pseudomembranous colitis were identified during the studies. The onset of pseudomembranous colitis symptoms may occur during or after therapy.

Hypersensitivity Reactions: Anaphylactic/anaphylactoid reactions (including shock and fatalities), skin rashes, urticaria, drug fever, pruritus, angioedema, and facial edema. Erythema multiforme, Stevens-Johnson syndrome, and serum sickness-like reactions have been reported.

Hepatic: Transient elevations in SGPT, SGOT, alkaline phosphatase, hepatitis, jaundice.

Renal: Transient elevations in BUN or creatinine, acute renal failure.

Central Nervous System: Headaches, dizziness, seizures.

Hemic and Lymphatic Systems: Transient thrombocytopenia, leukopenia, neutropenia, and eosinophilia. Prolongation in prothrombin time was seen rarely.

Abnormal Laboratory Tests: Hyperbilirubinemia.

Other: Genital pruritus, vaginitis, candidiasis, toxic epidermal necrolysis.

In addition to the adverse reactions listed above which have been observed in patients treated with cefixime, the following adverse reactions and altered laboratory tests have been reported for cephalosporin-class antibiotics:

Adverse reactions: Allergic reactions, superinfection, renal dysfunction, toxic nephropathy, hepatic

dysfunction including cholestasis, aplastic anemia, hemolytic anemia, hemorrhage, and colitis.

Several cephalosporins have been implicated in triggering seizures, particularly in patients with renal impairment when the dosage was not reduced. (See **DOSAGE AND ADMINISTRATION** and **OVERDOSAGE**.) If seizures associated with drug therapy occur, the drug should be discontinued. Anticonvulsant therapy can be given if clinically indicated.

Abnormal Laboratory Tests: Positive direct Coombs test, elevated LDH, pancytopenia, agranulocytosis.

OVERDOSAGE

Gastric lavage may be indicated; otherwise, no specific antidote exists. Cefixime is not removed in significant quantities from the circulation by hemodialysis or peritoneal dialysis. Adverse reactions in small numbers of healthy adult volunteers receiving single doses up to 2 g of cefixime did not differ from the profile seen in patients treated at the recommended doses.

DOSAGE AND ADMINISTRATION

Adults: The recommended dose of cefixime is 400 mg daily. This may be given as a 400 mg tablet daily or as 200 mg tablet every 12 hours. For the treatment of uncomplicated cervical/urethral gonococcal infections, a single oral dose of 400 mg is recommended.

Children: The recommended dose is 8 mg/kg/day of the suspension. This may be administered as a single daily dose or may be given in two divided doses, as 4 mg/kg every 12 hours.

PEDIATRIC DOSAGE CHART					
		100 mg/5 mL		200 mg/5 mL	
Patient Weight (kg)	Dose/Day mg	Dose/Day mL	Dose/Day tsp of Suspension	Dose/Day mL	Dose/Day tsp of Suspension
6.25	50	2.5	½	1.25	¼
12.5	100	5	1	2.5	½
18.75	150	7.5	1½	3.75	¾
25	200	10	2	5	1
31.25	250	12.5	2½	6.25	1¼
37.5	300	15	3	7.5	1½

Children weighing more than 50 kg or older than 12 years should be treated with the recommended adult dose.

Otitis media should be treated with the suspension. Clinical studies of otitis media were conducted with the suspension, and the suspension results in higher peak blood levels than the tablet when administered at the same dose. Therefore, the tablet should not be substituted for the suspension in the treatment of otitis media. (See **CLINICAL PHARMACOLOGY**.)

Efficacy and safety in infants aged less than six months have not been established.

In the treatment of infections due to *S. pyogenes*, a therapeutic dosage of Suprax should be administered for at least 10 days.

Renal Impairment

Suprax may be administered in the presence of impaired renal function. Normal dose and schedule may be employed in patients with creatinine clearances of 60 mL/min or greater. Patients whose clearance is between 21 and 60 mL/min or patients who are on renal hemodialysis may be given 75% of the standard dosage at the standard dosing interval (i.e., 300 mg daily). Patients whose clearance is < 20 mL/min, or patients who are on continuous ambulatory peritoneal dialysis may be given half the standard dosage at the standard dosing interval (i.e., 200 mg daily). Neither hemodialysis nor peritoneal dialysis remove significant amounts of drug from the body.

Reconstitution Directions For Oral Suspension

Strength	Bottle Size	Reconstitution Directions
100 mg/5 mL and 200 mg/5 mL	100 mL	To reconstitute, suspend with 68 mL water . Method: Tap the bottle several times to loosen powder contents prior to reconstitution. Add approximately half the total amount of water for reconstitution and shake well. Add the remainder of water and shake well.
100 mg/5 mL and 200 mg/5 mL	75 mL	To reconstitute, suspend with 51 mL water . Method: Tap the bottle several times to loosen powder contents prior to reconstitution. Add approximately half the total amount of water for reconstitution and shake well. Add the remainder of water and shake well.
100 mg/5 mL and 200 mg/5 mL	50 mL	To reconstitute, suspend with 34 mL water . Method: Tap the bottle several times to loosen powder contents prior to reconstitution. Add approximately half the total amount of water for reconstitution and shake well. Add the remainder of water and shake well.
200 mg/5 mL	37.5 mL	To reconstitute, suspend with 26 mL water . Method: Tap the bottle several times to loosen powder contents prior to reconstitution. Add approximately half the total amount of water for reconstitution and shake well. Add the remainder of water and shake well.
200 mg/5 mL	25 mL	To reconstitute, suspend with 17 mL water . Method: Tap the bottle several times to loosen powder contents prior to reconstitution. Add approximately half the total amount of water for reconstitution and shake well. Add the remainder of water and shake well.

After reconstitution the suspension may be kept for 14 days either at room temperature, or under refrigeration, without significant loss of potency. Keep tightly closed. Shake well before using. Discard unused portion after 14 days.

HOW SUPPLIED

Suprax[®], Cefixime Tablets USP, 400 mg are white to off-white film coated capsule shaped tablets with beveled edges and a divided score line on each side, debossed with "SUPRAX" across one side and "LUPIN" across other side containing 400 mg of cefixime as the trihydrate and are supplied as follows:

NDC 27437-201-01—Bottle of 100 tablets

NDC 27437-201-08—Bottle of 50 tablets

NDC 27437-201-10—Bottle of 10 tablets with CRC

Store at 20 - 25°C (68 - 77°F) [See USP Controlled Room Temperature].

Suprax[®], Cefixime for Oral Suspension USP, 100 mg/5 mL is an off-white to pale yellow colored powder. After reconstituted as directed, each 5 mL of reconstituted suspension contains 100 mg of cefixime as the trihydrate and is supplied as follows:

NDC 68180-202-03 - 50 mL Bottle

NDC 68180-202-02 - 75 mL Bottle

NDC 68180-202-01 - 100 mL Bottle

Prior to reconstitution: Store drug powder at 20 - 25°C (68 - 77°F) [See USP Controlled Room Temperature].

After reconstitution: Store at room temperature or under refrigeration.

Keep tightly closed.

Suprax[®], Cefixime for Oral Suspension USP, 200 mg/5mL is an off-white to pale yellow colored powder. After reconstituted as directed, each 5 mL of reconstituted suspension contains 200 mg of cefixime as the trihydrate and is supplied as follows:

NDC 27437-206-05 - 25 mL Bottle

NDC 27437-206-06 - 37.5 mL Bottle

NDC 27437-206-03 - 50 mL Bottle

NDC 27437-206-02 - 75 mL Bottle

NDC 27437-206-01 - 100 mL Bottle

Prior to reconstitution: Store drug powder at 20-25°C (68-77°F) [See USP Controlled Room Temperature].

After reconstitution: Store at room temperature or under refrigeration.

Keep tightly closed.

REFERENCES

1. Bauer AW, Kirby WMM, Sherris JC, et al.: Antibiotic susceptibility testing by a standard single disk method. *Am J Clin Pathol* 1966; 45:493.
2. National Committee for Clinical Laboratory Standards, Approved Standard: Performance Standards for Antimicrobial Disk Susceptibility Tests (M2-A3), December 1984.
3. Standardized disk susceptibility test. *Federal Register* 1974; 39 (May 30): 19182-19184.

**Clinitest[®] and Clinistix[®] are registered trademarks of Ames Division, Miles Laboratories, Inc. Tes-Tape[®] is a registered trademark of Eli Lilly and Company.

Manufactured for:

Suprax[®], Cefixime Tablets USP, 400 mg

and Suprax[®], Cefixime for Oral Suspension USP, 200 mg/5 mL

Lupin Pharma

Baltimore, Maryland 21202

United States

Suprax[®], Cefixime for Oral Suspension USP, 100 mg/5 mL

Lupin Pharmaceuticals Inc.

Baltimore, Maryland 21202

United States

Manufactured by:

Lupin Limited

Mumbai 400 098

INDIA

Revised: October 2008

(ID: 216394)

Packaged by Bryant Ranch

Suprax 400mg Tablet

North Hollywood, CA, 91605

WHITE OBLONG LUPIN SUPRAX

LOT
47951

Brand

LUPIN PHARMA

10

Exp: MM/YY

NDC

6362946391

RX ONLY

Keep in light resistant
container perUSP

Store at room temp of
20-25 C (68-77F)



04639147951

SUPRAX

cefixime tablet

Product Information

Product Type	HUMAN PRESCRIPTION DRUG	Item Code (Source)	NDC:63629-4639(NDC:27437-201)
Route of Administration	ORAL		

Active Ingredient/Active Moiety

Ingredient Name	Basis of Strength	Strength
CEFIXIME (UNII: 971IC92E55) (CEFIXIME ANHYDROUS - UNII:XZ7BG04GJX)	CEFIXIME ANHYDROUS	400 mg

Inactive Ingredients

Ingredient Name	Strength
CELLULOSE, MICROCRYSTALLINE (UNII: OP1R32D61U)	
CALCIUM PHOSPHATE, DIBASIC, DIHYDRATE (UNII: O7TSZ97GEP)	
HYPROMELLOSES (UNII: 3NXW29V3WO)	
LACTOSE MONOHYDRATE (UNII: EWQ57Q8I5X)	
MAGNESIUM STEARATE (UNII: 70097M6I30)	
POLYETHYLENE GLYCOLS (UNII: 3WJQ0SDW1A)	
STARCH, CORN (UNII: O8232NY3SJ)	
TITANIUM DIOXIDE (UNII: 15FIX9V2JP)	
TRIACETIN (UNII: XHX3C3X673)	

Product Characteristics

Color	WHITE (White to off white)	Score	2 pieces
Shape	CAPSULE (Capsule shaped tablets with beveled edges)	Size	19mm
Flavor		Imprint Code	SUPRAX;LUPIN
Contains			

Packaging

#	Item Code	Package Description	Marketing Start Date	Marketing End Date
---	-----------	---------------------	----------------------	--------------------

1	NDC:63629-4639-1	10 in 1 BOTTLE		
Marketing Information				
Marketing Category	Application Number or Monograph Citation	Marketing Start Date	Marketing End Date	
ANDA	ANDA065130	04/01/2008		

Labeler - Bryant Ranch Prepack (171714327)

Registrant - Bryant Ranch Prepack (171714327)

Establishment			
Name	Address	ID/FEI	Business Operations
Bryant Ranch Prepack		171714327	REPACK(63629-4639) , RELABEL(63629-4639)

Revised: 1/2013

Bryant Ranch Prepack