

## **TOPCARE ANTIFUNGAL- clotrimazole cream**

**Topco Associates LLC**

*Disclaimer: Most OTC drugs are not reviewed and approved by FDA, however they may be marketed if they comply with applicable regulations and policies. FDA has not evaluated whether this product complies.*

-----

### **TopCare® Antifungal Cream**

#### ***Drug Facts***

#### **Active ingredient**

Clotrimazole 1%

#### **Purpose**

Antifungal

#### **Uses**

- cures most athlete's foot, jock itch and ringworm
- relieves itching, burning, cracking, scaling and discomfort which accompany these conditions

#### **Warnings**

##### **For external use only**

**Do not use** on children under 2 years of age unless directed by a doctor.

**When using this product** avoid contact with eyes

##### **Stop use and ask a doctor if**

- irritation occurs
- there is no improvement within 4 weeks (for athlete's foot or ringworm) or 2 weeks (for jock itch)

**Keep out of reach of children.** If swallowed, get medical help or contact a Poison Control Center right away.

#### **Directions**

- wash affected area and dry thoroughly
- apply a thin layer over affected area twice daily (morning and night)
- supervise children in the use of this product
- for athlete's foot, pay special attention to spaces between the toes, wear well-fitting, ventilated shoes and change socks at least once daily
- for athlete's foot and ringworm, use daily for 4 weeks; for jock itch, use daily for 2 weeks
- if condition persists longer, ask a doctor
- this product is not effective on the scalp or nails

#### **Other information**

- To open: unscrew cap, use the pointed end of cap to puncture seal.
- store between 20°- 25°C (68° - 77°F)

- see carton or tube crimp for lot number and expiration date

**Inactive ingredients**

benzyl alcohol (1%), cetostearyl alcohol, cetyl esters wax, 2-octyldodecanol, polysorbate 60, purified water, sorbitan monostearate

**QUESTIONS?**

**1-888-423-0139**

topcare@topco.com

DISTRIBUTED BY  
TOPCO ASSOCIATES LLC  
7711 GROSS POINT ROAD  
SKOKIE, IL 60077

**PRINCIPAL DISPLAY PANEL - 14.2 g Tube Carton**

**TopCare®**

**CURES MOST ATHLETE'S FOOT**

**Antifungal Cream**

CLOTRIMAZOLE CREAM USP, 1%

QUALITY  
GUARANTEED

**COMPARE TO  
LOTRIMIN® AF  
active ingredient\***

**NET WT 0.5 OZ (14.2 g)**

TopCare®



# Athlete's Foot Cream

- Relieves itching and burning
- Cures most Athlete's Foot

- Relieves itching and burning
- Cures most Athlete's Foot
- Greaseless, nonstaining

TopCare®

CURES MOST ATHLETE'S FOOT

## Antifungal Cream

CLOTRIMAZOLE CREAM USP, 1%

NET WT 0.5 OZ (14.2 g)



COMPARE TO  
LOTRIMIN® AF  
active ingredient\*



**Drug Facts** (continued)

**Inactive ingredients**  
benzyl alcohol (1%), cetostearyl alcohol, cetyl esters wax, 2-octyldodecanol, polysorbate 60, purified water, sorbitan monostearate

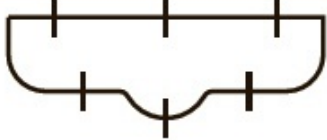
**Other information**

- for athlete's foot and ringworm, use daily for 4 weeks; for jock itch, use daily for 2 weeks
- if condition persists longer, ask a doctor
- this product is not effective on the scalp or nails
- To open: unscrew cap, use the pointed end of cap to puncture seal.
- store between 20° - 25°C (68° - 77°F)
- see carton or tube crimp for lot number and expiration date

Made in Canada.

This TopCare® product is laboratory tested to guarantee its highest quality. Your total satisfaction is guaranteed.

# TopCare® Athlete's Foot Cream



## Drug Facts

**Active ingredient**  
Clotrimazole 1%.....Antifungal

**Uses**  
• cures most athlete's foot, jock itch and ringworm  
• relieves itching, burning, cracking, scaling and discomfort which accompany these conditions

**Warnings**  
For external use only  
Do not use on children under 2 years of age unless directed by a doctor.

When using this product avoid contact with eyes

Stop use and ask a doctor if • Irritation occurs  
• there is no improvement within 4 weeks (for athlete's foot or ringworm) or 2 weeks (for jock itch)

Keep out of reach of children. If swallowed, get medical help or contact a Poison Control Center right away.

## Directions

- wash affected area and dry thoroughly
- apply a thin layer over affected area twice daily (morning and night)
- supervise children in the use of this product
- for athlete's foot, pay special attention to spaces between the toes, wear well-fitting, ventilated shoes and change socks at least once daily

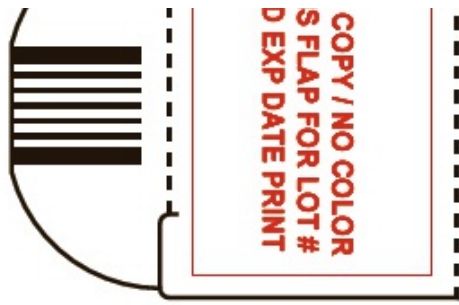
This product is not manufactured or distributed by Heal n Care Products, Inc., owner of the registered trademark Lotminir® AF. DISTRIBUTED BY TOPCO ASSOCIATES LLC 7711 GROSS POINT ROAD SKOKIE, IL 60077 © TOPCO TAR111 1-888-423-0139 QUESTIONS? topcare@topco.com

LPK-1492-7  
0811-7  
M192



T27

NO  
THI  
ANI



## TOPCARE ANTIFUNGAL

clotrimazole cream

### Product Information

<b>Product Type</b>	HUMAN OTC DRUG	<b>Item Code (Source)</b>	NDC:36800-495
<b>Route of Administration</b>	TOPICAL		

### Active Ingredient/Active Moiety

Ingredient Name	Basis of Strength	Strength
<b>Clotrimazole</b> (UNII: G07GZ97H65) (Clotrimazole - UNII:G07GZ97H65)	Clotrimazole	10 mg in 1 g

### Inactive Ingredients

Ingredient Name	Strength
<b>benzyl alcohol</b> (UNII: LKG8494WBH)	
<b>cetostearyl alcohol</b> (UNII: 2DMT128M1S)	
<b>cetyl esters wax</b> (UNII: D072FFP9GU)	
<b>octyldodecanol</b> (UNII: 461N1O614Y)	
<b>polysorbate 60</b> (UNII: CAL22UVI4M)	
<b>water</b> (UNII: 059QF0KO0R)	
<b>sorbitan monostearate</b> (UNII: NVZ4I0H58X)	

### Packaging

#	Item Code	Package Description	Marketing Start Date	Marketing End Date
1	NDC:36800-495-69	1 in 1 CARTON		
1		14.2 g in 1 TUBE		

### Marketing Information

Marketing Category	Application Number or Monograph Citation	Marketing Start Date	Marketing End Date
OTC MONOGRAPH FINAL	part333C	08/31/1993	

**Labeler** - Topco Associates LLC (006935977)

**Registrant** - Taro Pharmaceuticals U.S.A., Inc. (145186370)

**Establishment**

Name	Address	ID/FEI	Business Operations
Taro Pharmaceuticals Inc.		206263295	MANUFACTURE(36800-495)

Revised: 1/2013

Topco Associates LLC