

**SUNMARK ALL DAY RELIEF- naproxen sodium tablet, film coated  
McKesson**

-----  
**McKesson All Day Relief Drug Facts**

**Active ingredient (in each caplet)**

Naproxen sodium 220 mg

(naproxen 200 mg) (NSAID)\*

\*nonsteroidal anti-inflammatory drug

**Purpose**

Pain reliever/fever reducer

**Uses**

- temporarily relieves minor aches and pains due to:
- minor pain of arthritis
- muscular aches
- backache
- menstrual cramps
- headache
- toothache
- the common cold
- temporarily reduces fever

**Warnings**

Allergy alert: Naproxen sodium may cause a severe allergic reaction, especially in people allergic to aspirin. Symptoms may include:

- hives
- facial swelling
- asthma (wheezing)
- shock
- skin reddening
- rash
- blisters

If an allergic reaction occurs, stop use and seek medical help right away.

Stomach bleeding warning: This product contains an NSAID, which may cause severe stomach bleeding. The chance is higher if you

- are age 60 or older
- have had stomach ulcers or bleeding problems
- take a blood thinning (anticoagulant) or steroid drug

- take other drugs containing prescription or nonprescription NSAIDs (aspirin, ibuprofen, naproxen, or others)
- have 3 or more alcoholic drinks every day while using this product
- take more or for a longer time than directed

**Do not use**

- if you have ever had an allergic reaction to any other pain reliever/fever reducer
- right before or after heart surgery

**Ask a doctor before use if**

- the stomach bleeding warning applies to you
- you have a history of stomach problems, such as heartburn
- you have high blood pressure, heart disease, liver cirrhosis, or kidney disease
- you are taking a diuretic
- you have problems or serious side effects from taking pain relievers or fever reducers
- you have asthma

**Ask a doctor or pharmacist before use if you are**

- under a doctor's care for any serious condition
- taking any other drug

**When using this product**

- take with food or milk if stomach upset occurs
- the risk of heart attack or stroke may increase if you use more than directed or for longer than directed

**Stop use and ask a doctor if**

- you experience any of the following signs of stomach bleeding:
- feel faint
- vomit blood
- have bloody or black stools
- have stomach pain that does not get better
- pain gets worse or lasts more than 10 days
- fever gets worse or lasts more than 3 days
- you have difficulty swallowing
- it feels like the pill is stuck in your throat
- redness or swelling is present in the painful area
- any new symptoms appear

**If pregnant or breast-feeding,**

ask a health professional before use. It is especially important not to use naproxen sodium during the last 3 months of pregnancy unless definitely directed to do so by a doctor because it may cause problems in the unborn child or complications during delivery.

**Keep out of reach of children.**

In case of overdose, get medical help or contact a Poison Control Center right away. (1-800-222-1222)

**Directions**

- do not take more than directed
- the smallest effective dose should be used
- drink a full glass of water with each dose

Adults and children 12 years and older:

- take 1 caplet every 8 to 12 hours while symptoms last
- for the first dose you may take 2 caplets within the first hour
- do not exceed 2 caplets in any 8- to 12-hour period
- do not exceed 3 caplets in a 24-hour period

Children under 12 years:

- ask a doctor

**Other information**

- each caplet contains: sodium 21 mg
- store at 20-25°C (68-77°F). Avoid high humidity and excessive heat above 40°C (104°F).

**Inactive ingredients**

FD&C blue no. 2 aluminum lake, hypromellose, magnesium stearate, microcrystalline cellulose, polyethylene glycol, povidone, talc, titanium dioxide

**Questions or comments?**

1-800-719-9260

**Principal Display Panel**

COMPARE TO ALEVE® CAPLETS ACTIVE INGREDIENT

See New Warnings Information

all day relief

Naproxen Sodium Tablets, 220 mg

Pain reliever & Fever reducer (NSAID)

STRENGTH TO LAST 12 HOURS

GLUTEN FREE

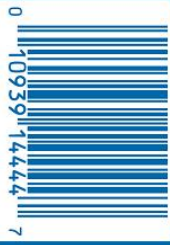
Actual Size

\*\*Capsule-Shaped Tablets

EXP. DATE

LOT NO.

LOT NO.



sunmark®

COMPARE TO ALEVE® CAPLETS ACTIVE INGREDIENT\*\*\*

NDC 49348-819-09

# all day relief

## Naproxen Sodium Tablets, 220 mg

### Pain reliever & Fever reducer (NSAID)

#### STRENGTH TO LAST 12 HOURS



GLUTEN FREE

Actual Size

### 50 CAPLETS\* \*

\*\* Capsule-Shaped Tablets

See New Warnings Information

#### Drug Facts (continued)

**Inactive ingredients:** FD&C blue no. 2 aluminum lake, hypromellose, magnesium stearate, microcrystalline cellulose, polyethylene glycol, povidone, talc, titanium dioxide

Questions or comments? 1-800-719-9260

KEEP CARTON FOR REFERENCE

\*\*\*This product is not manufactured or distributed by Bayer HealthCare LLC, distributor of Aleve® Caplets.

MEKESSON

Distributed By McKesson  
One Post Street, San Francisco, CA 94104  
Money Back Guarantee



#### Drug Facts (continued)

**When using this product** ■ Take with food or milk if stomach upset occurs ■ the risk of heart attack or stroke may increase if you use more than directed or for longer than directed

**Stop use and ask a doctor if** ■ you experience any of the following signs or stomach bleeding: ■ feel faint ■ vomit blood ■ have bloody or black stools ■ have stomach pain that does not get better ■ pain gets worse or lasts more than 10 days ■ fever gets worse or lasts more than 3 days ■ you have difficulty swallowing ■ it feels like the pill is stuck in your throat ■ redness or swelling is present in the painful area ■ any new symptoms appear

**If pregnant or breast-feeding**, ask a health professional before use. It is especially important not to use naproxen sodium during the last 3 months of pregnancy unless definitely directed to do so by a doctor because it may cause problems in the unborn child or complications during delivery. **Keep out of reach of children.** In case of overdose, get medical help or contact a Poison Control Center right away. (1-800-222-1222)

#### Directions

■ do not take more than directed ■ the smallest effective dose should be used ■ drink a full glass of water with each dose  
**Adults and children 12 years and older:** ■ take 1 caplet every 8 to 12 hours while symptoms last ■ for the first dose you may take 2 caplets within the first hour ■ do not exceed 2 caplets in any 8- to 12-hour period ■ do not exceed 3 caplets in a 24-hour period  
**Children under 12 years:** ■ ask a doctor

#### Other information

■ each caplet contains: sodium 21 mg ■ store at 20°-25°C (68°-77°F). Avoid high humidity and excessive heat above 40°C (104°F).

DO NOT USE IF PRINTED FOIL UNDER  
CAP IS BROKEN OR MISSING

ACTUAL SIZE



### Drug Facts

<b>Active ingredient (in each caplet)</b>	<b>Purposes</b>
Naproxen sodium 220 mg (naproxen 200 mg) (NSAID)*	Pain reliever/ fever reducer
*nonsteroidal anti-inflammatory drug	

**Uses** ■ temporarily relieves minor aches and pains due to:

- minor pain of arthritis
- muscular aches
- backache
- menstrual cramps
- headache
- toothache
- the common cold
- temporarily reduces fever

### Warnings

**Allergy alert:** Naproxen sodium may cause a severe allergic reaction, especially in people allergic to aspirin. Symptoms may include:

■ hives ■ facial swelling ■ asthma (wheezing)  
■ shock ■ skin reddening ■ rash ■ blisters

If an allergic reaction occurs, stop use and seek medical help right away.

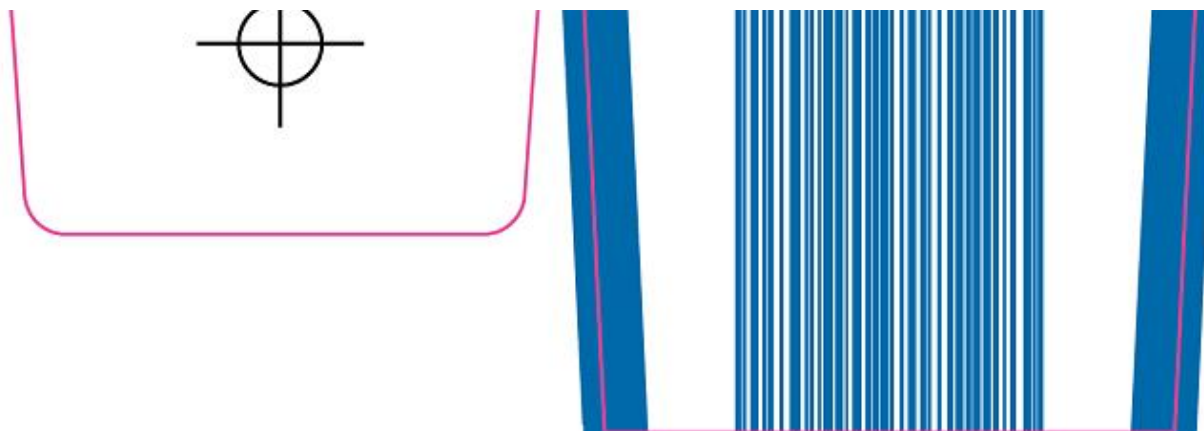
**Stomach bleeding warning:** This product contains an NSAID, which may cause severe stomach bleeding. The chance is higher if you ■ are age 60 or older ■ have had stomach ulcers or bleeding problems ■ take a blood thinning (anticoagulant) or steroid drug ■ take other drugs containing prescription or nonprescription NSAIDs (aspirin, ibuprofen, naproxen, or others) ■ have 3 or more alcoholic drinks every day while using this product ■ take more or for a longer time than directed

**Do not use** ■ if you have ever had an allergic reaction to any other pain reliever/fever reducer ■ right before or after heart surgery

**Ask a doctor before use if** ■ the stomach bleeding warning applies to you ■ you have a history of stomach problems, such as heartburn ■ you have high blood pressure, heart disease, liver cirrhosis, or kidney disease ■ you are taking a diuretic ■ you have problems or serious side effects from taking pain relievers or fever reducers ■ you have asthma

**Ask a doctor or pharmacist before use if you are**

■ under a doctor's care for any serious condition  
■ taking any other drug



## SUNMARK ALL DAY RELIEF

naproxen sodium tablet, film coated

### Product Information

<b>Product Type</b>	HUMAN OTC DRUG	<b>Item Code (Source)</b>	NDC:49348-819
<b>Route of Administration</b>	ORAL		

### Active Ingredient/Active Moiety

Ingredient Name	Basis of Strength	Strength
NAPROXEN SODIUM (UNII: 9TN87S3A3C) (NAPROXEN - UNII:57Y76R9ATQ)	NAPROXEN SODIUM	220 mg

### Inactive Ingredients

Ingredient Name	Strength
HYPROMELLOSES (UNII: 3NXW29V3WO)	
MAGNESIUM STEARATE (UNII: 70097M6I30)	
CELLULOSE, MICROCRYSTALLINE (UNII: OP1R32D61U)	
POLYETHYLENE GLYCOLS (UNII: 3WJQ0SDW1A)	
POVIDONES (UNII: FZ989GH94E)	
TALC (UNII: 7SEV7J4R1U)	
TITANIUM DIOXIDE (UNII: 15FIX9V2JP)	

### Product Characteristics

<b>Color</b>	BLUE (Light Blue)	<b>Score</b>	no score
<b>Shape</b>	CAPSULE (oval)	<b>Size</b>	12mm
<b>Flavor</b>		<b>Imprint Code</b>	L368
<b>Contains</b>			

### Packaging

#	Item Code	Package Description	Marketing Start Date	Marketing End Date
1	NDC:49348-819-09	1 in 1 CARTON		
1		50 in 1 BOTTLE		

2	NDC:49348-819-10	1 in 1 CARTON		
2		100 in 1 BOTTLE		

## Marketing Information

Marketing Category	Application Number or Monograph Citation	Marketing Start Date	Marketing End Date
ANDA	ANDA074661	08/11/2003	

**Labeler** - McKesson (177667227)

Revised: 12/2012

McKesson