

**PEPTO-BISMOL- bismuth subsalicylate tablet, chewable**  
**Lil' Drug Store Products, Inc.**

*Disclaimer: Most OTC drugs are not reviewed and approved by FDA, however they may be marketed if they comply with applicable regulations and policies. FDA has not evaluated whether this product complies.*

-----

**Pepto-Bismol**

***Drug Facts***

**Active ingredient (in each tablet)**

Bismuth subsalicylate 262 mg

**Purposes**

Upset stomach reliever and antidiarrheal

**Uses**

relieves

- travelers' diarrhea
- diarrhea
- upset stomach due to overindulgence in food and drink, including:
  - heartburn
  - indigestion
  - nausea
  - gas
  - belching
  - fullness

**Warnings**

**Reye's syndrome**

Children and teenagers who have or are recovering from chicken pox or flu-like symptoms should not use this product. When using this product, if changes in behavior with nausea and vomiting occur, consult a doctor because these symptoms could be an early sign of Reye's syndrome, a rare but serious illness.

**Allergy alert**

**Contains salicylate. Do not take if you are**

- allergic to salicylates (including aspirin)
- taking other salicylate products

**Do not use if you have**

- an ulcer
- a bleeding problem
- bloody or black stool

**Ask a doctor before use if you have**

- fever

- mucus in the stool

**Ask a doctor or pharmacist before use if you are** taking any drug for

- anticoagulation (thinning the blood)
- diabetes
- gout
- arthritis

**When using this product** a temporary, but harmless, darkening of the stool and/or tongue may occur

**Stop use and ask a doctor if**

- symptoms get worse or last more than 2 days
- ringing in the ears or loss of hearing occurs
- diarrhea lasts more than 2 days

**If pregnant or breast feeding,** ask a health professional before use.

**Keep out of reach of children.** In case of overdose, get medical help or contact a Poison Control Center right away.

### **Directions**

- chew or dissolve in mouth
- adults and children 12 years and over: 2 tablets every 1/2 to 1 hour as needed
- do not exceed 8 doses (16 tablets) in 24 hours
- use until diarrhea stops but not more than 2 days
- children under 12 years: ask a doctor
- drink plenty of clear fluids to help prevent dehydration caused by diarrhea

### **Other information**

- **each tablet contains:** calcium 140 mg
- sodium less than 1 mg
- salicylate 102 mg
- very low sodium
- sugar free
- avoid excessive heat (over 104°F or 40°C)

### **Inactive ingredients**

calcium carbonate, flavor, magnesium stearate, mannitol, povidone, red 27 aluminum lake, saccharin sodium, talc

### **Questions?**

1-800-717-3786

**Repackaged and distributed with  
permission of manufacturer by:**

Lil' Drug Store Products  
1201 Continental Place NE  
Cedar Rapids, IA 52402

**PRINCIPAL DISPLAY PANEL - 4 Tablet Pouch Carton**

**Pepto**  
**BISMOL™**

BISMUTH SUBSALICYLATE  
UPSET STOMACH RELIEVER/ANTIDIARRHEAL

**5 SYMPTOM RELIEF**

**Nausea • Heartburn • Indigestion**  
**Upset Stomach • Diarrhea**

**4 CHEWABLE**  
**TABLETS**

**Lil'**  
**DrugStore®**



**Drug Facts (continued)**

**Other Information**

- each tablet contains: calcium 140 mg
- sodium less than 1 mg
- salicylate 102 mg
- very low sodium
- sugar free
- avoid excessive heat (over 104°F or 40°C)

**Inactive Ingredients** calcium carbonate, flavor, magnesium stearate, mannitol, povidone, red 27 aluminum lake, saccharin sodium, talc

**Questions?** 1-800-717-3786

Made in Mexico by Procter & Gamble  
Manufacturers S. de R.L. de C.V.  
Dist. by Procter & Gamble, Cincinnati, OH 45202

www.pepto-bismol.com ©2011

Repackaged and distributed with  
permission of manufacturer by:  
Lil' Drug Store Products  
1201 Continental Place NE  
Cedar Rapids, IA 52402  
1-877-507-6516 M-F (8 AM-4:30 PM CST)  
www.lildrugstore.com Rev 1-11



**Drug Facts (continued)**

Ask a doctor before use if you have

- fever
- mucus in the stool

Ask a doctor or pharmacist before use if you are taking any drug for

- anticoagulation (thinning the blood)
- diabetes • gout • arthritis

When using this product a temporary, but harmless, darkening of the stool and/or tongue may occur

Stop use and ask a doctor if

- symptoms get worse or last more than 2 days
- ringing in the ears or loss of hearing occurs
- diarrhea lasts more than 2 days

If pregnant or breast feeding, ask a health professional before use.

Keep out of reach of children. In case of overdose, get medical help or contact a Poison Control Center right away.

**Directions**

- chew or dissolve in mouth
- adults and children 12 years and over: 2 tablets every 1/2 to 1 hour as needed
- do not exceed 8 doses (16 tablets) in 24 hours
- use until diarrhea stops but not more than 2 days
- children under 12 years: ask a doctor
- drink plenty of clear fluids to help prevent dehydration caused by diarrhea

**TAMPER EVIDENT:**

Do not use if the printed inner wrap is broken or missing.

**Drug Facts**

**Active Ingredient (In each tablet) Purposes**

Bismuth subsalicylate 262 mg.....Upset stomach reliever and antidiarrheal

**Uses** relieves

- travelers' diarrhea • diarrhea
- upset stomach due to overindulgence in food and drink, including:
- heartburn • indigestion • nausea • gas • belching • fullness

**Warnings**

**Reye's syndrome:** Children and teenagers who have or are recovering from chicken pox or flu-like symptoms should not use this product. When using this product, if changes in behavior with nausea and vomiting occur, consult a doctor because these symptoms could be an early sign of Reye's syndrome, a rare but serious illness.

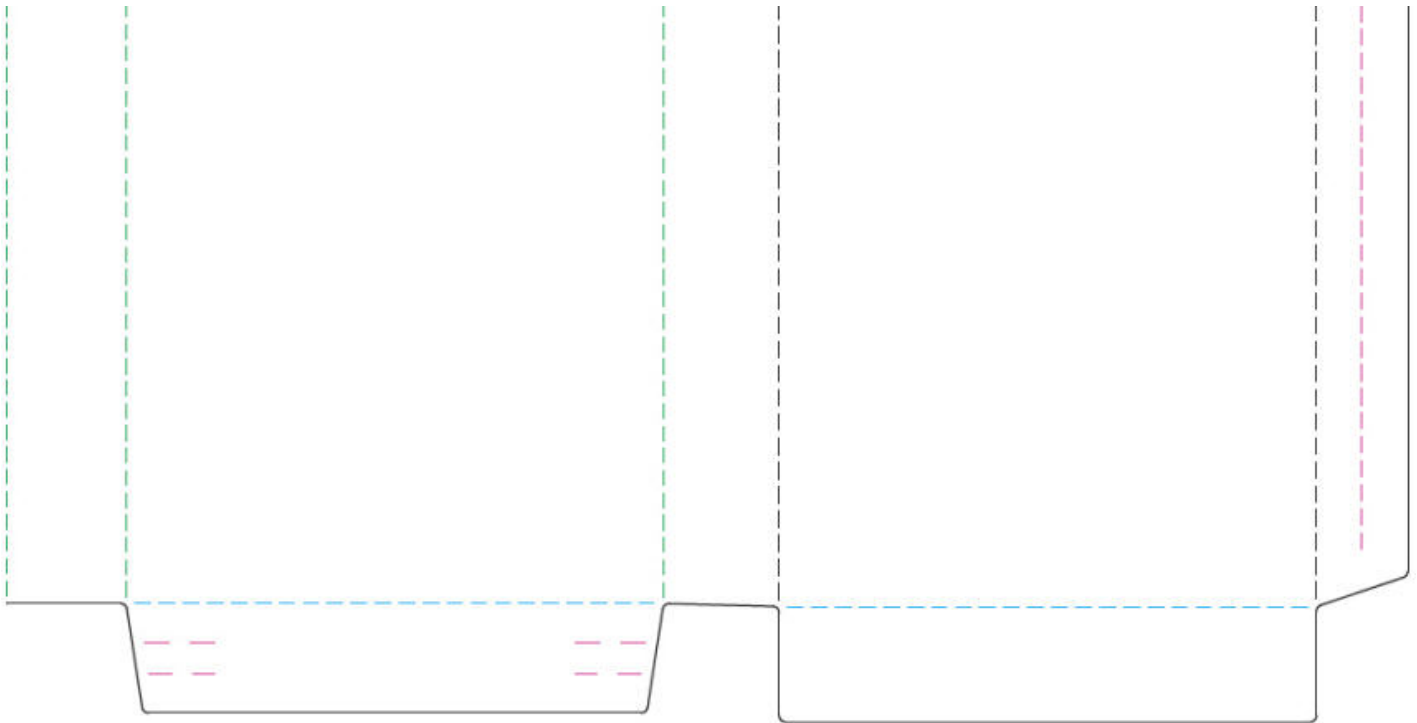
**Allergy alert:** Contains salicylate. Do not take if you are

- allergic to salicylates (including aspirin)
- taking other salicylate products

Do not use if you have

- an ulcer
- a bleeding problem
- bloody or black stool

LIFT PANEL FOR CONTINUED DRUG FACTS



## PEPTO-BISMOL

bismuth subsalicylate tablet, chewable

### Product Information

<b>Product Type</b>	HUMAN OTC DRUG LABEL	<b>Item Code (Source)</b>	NDC:66715-9723(NDC:37000-477)
<b>Route of Administration</b>	ORAL	<b>DEA Schedule</b>	

### Active Ingredient/Active Moiety

Ingredient Name	Basis of Strength	Strength
Bismuth subsalicylate (Bismuth cation)	Bismuth subsalicylate	262 mg

### Inactive Ingredients

Ingredient Name	Strength
calcium carbonate	
magnesium stearate	
mannitol	
povidones	
D&C red no. 27	
aluminum oxide	
saccharin sodium	
talc	

### Product Characteristics

<b>Color</b>	PINK	<b>Score</b>	no score
--------------	------	--------------	----------

<b>Shape</b>	ROUND	<b>Size</b>	16mm
<b>Flavor</b>		<b>Imprint Code</b>	Pepto;Bismol
<b>Contains</b>			

### Packaging

#	Item Code	Package Description	Marketing Start Date	Marketing End Date
1	NDC:66715-9723-2	2 in 1 CARTON		
1		2 in 1 POUCH		

### Marketing Information

Marketing Category	Application Number or Monograph Citation	Marketing Start Date	Marketing End Date
OTC MONOGRAPH FINAL	part335	09/16/2010	

**Labeler** - Lil' Drug Store Products, Inc. (093103646)

### Establishment

Name	Address	ID/FEI	Business Operations
CCB Packaging Inc.		362374464	REPACK(66715-9723), RELABEL(66715-9723)

### Establishment

Name	Address	ID/FEI	Business Operations
The Proctor & Gamble Manufacturing Company		007130032	MANUFACTURE(66715-9723)

Revised: 1/2013

Lil' Drug Store Products, Inc.