

TOPIRAMATE- topiramate capsule, extended release

NorthStar RxLLC

HIGHLIGHTS OF PRESCRIBING INFORMATION

These highlights do not include all the information needed to use TOPIRAMATE EXTENDED-RELEASE CAPSULES safely and effectively. See full prescribing information for TOPIRAMATE EXTENDED-RELEASE CAPSULES.

TOPIRAMATE extended-release capsules, for oral use
Initial U.S. Approval: 1996

----- RECENT MAJOR CHANGES -----

Warnings and Precautions

(5.1, 5.2, 5.4, 5.7, 5.9, 5.10, 5.13) 12/2022

----- INDICATIONS AND USAGE -----

Topiramate extended-release capsules are indicated for:

- Epilepsy: initial monotherapy for the treatment of partial-onset or primary generalized tonic-clonic seizures in patients 2 years of age and older (1.1); adjunctive therapy for the treatment of partial-onset seizures, primary generalized tonic-clonic seizures, or seizures associated with Lennox-Gastaut Syndrome in patients 2 years of age and older (1.2)
- Preventive treatment of migraine in patients 12 years of age and older (1.3)

----- DOSAGE AND ADMINISTRATION -----

- Topiramate extended-release capsule initial dose, titration, and recommended maintenance dose varies by indication and age group. See Full Prescribing Information for recommended dosage, and dosing considerations in patients with renal impairment, geriatric patients, and patients undergoing hemodialysis (2.1, 2.2, 2.3, 2.4, 2.5, 2.6)
- Capsules may be swallowed whole or opened and sprinkled on a spoonful of soft food (2.6)

----- DOSAGE FORMS AND STRENGTHS -----

Extended-release capsules: 25 mg, 50 mg, 100 mg, 150 mg, and 200 mg (3)

----- CONTRAINDICATIONS -----

None (4)

----- WARNINGS AND PRECAUTIONS -----

- Acute myopia and secondary angle closure glaucoma: can lead to permanent visual loss; discontinue topiramate extended-release capsules as soon as possible (5.1)
- Visual field defects: consider discontinuation of topiramate extended-release capsules (5.2)
- Oligohydrosis and hyperthermia: monitor decreased sweating and increased body temperature, especially in pediatric patients (5.3)
- Metabolic acidosis: baseline and periodic measurement of serum bicarbonate is recommended; consider dose reduction or discontinuation of topiramate extended-release capsules if clinically appropriate (5.4)
- Suicidal behavior and ideation: antiepileptic drugs increase the risk of suicidal behavior or ideation (5.5)
- Cognitive/neuropsychiatric adverse reactions: use caution when operating machinery including cars; depression and mood problems may occur (5.6)
- Fetal Toxicity: use during pregnancy can cause major congenital malformations, including but not limited to cleft lip and/or palate, and being small for gestational age (5.7)
- Withdrawal of AEDs: withdraw topiramate extended-release capsules gradually (5.8)
- Decrease in Bone Mineral Density: has been shown to decrease bone mineral density and bone mineral content in pediatric patients (5.9)
- Negative effects on growth (height and weight): may slow height increase and weight gain; carefully monitor children receiving prolonged therapy (5.10)
- Serious skin reactions: If SJS or TEN is suspected, discontinue topiramate extended-release capsules. (5.11)

- Hyperammonemia/encephalopathy: measure ammonia if encephalopathic symptoms occur (5.12)
- Kidney stones: avoid use with other carbonic anhydrase inhibitors, drugs causing metabolic acidosis, or in patients on a ketogenic diet (5.13)
- Hypothermia has been reported with and without hyperammonemia during topiramate treatment with concomitant valproic acid use (5.14)

ADVERSE REACTIONS

Epilepsy: The most common ($\geq 10\%$ more frequent than placebo or low-dose topiramate) adverse reactions in adult and pediatric patients were: paresthesia, anorexia, weight loss, speech disorders/related speech problems, fatigue, dizziness, somnolence, nervousness, psychomotor slowing, abnormal vision and fever (6.1)

Migraine: Most common ($\geq 5\%$ more frequent than placebo) adverse reactions in adult and pediatric patients were: paresthesia, anorexia, weight loss, difficulty with memory, taste perversion, diarrhea, hypoesthesia, nausea, abdominal pain and upper respiratory tract infection (6.1)

To report SUSPECTED ADVERSE REACTIONS, contact Northstar Rx LLC at 1-800-206-7821 or FDA at 1-800-FDA-1088 or www.fda.gov/medwatch

DRUG INTERACTIONS

- Oral contraceptives: decreased contraceptive efficacy and increased breakthrough bleeding, especially at doses greater than 200 mg per day (7.4)
- Monitor lithium levels if lithium is used with high-dose topiramate extended-release capsules (7.7)

See 17 for PATIENT COUNSELING INFORMATION and Medication Guide.

Revised: 3/2023

FULL PRESCRIBING INFORMATION: CONTENTS*

1 INDICATIONS AND USAGE

- 1.1 Monotherapy Epilepsy
- 1.2 Adjunctive Therapy Epilepsy
- 1.3 Migraine

2 DOSAGE AND ADMINISTRATION

- 2.1 Dosing in Monotherapy Epilepsy
- 2.2 Dosing in Adjunctive Therapy Epilepsy
- 2.3 Dosing for the Preventive Treatment of Migraine
- 2.4 Dosing in Patients with Renal Impairment
- 2.5 Dosing in Patients Undergoing Hemodialysis
- 2.6 Administration Instructions

3 DOSAGE FORMS AND STRENGTHS

4 CONTRAINDICATIONS

5 WARNINGS AND PRECAUTIONS

- 5.1 Acute Myopia and Secondary Angle Closure Glaucoma Syndrome
- 5.2 Visual Field Defects
- 5.3 Oligohydrosis and Hyperthermia
- 5.4 Metabolic Acidosis
- 5.5 Suicidal Behavior and Ideation
- 5.6 Cognitive/Neuropsychiatric Adverse Reactions
- 5.7 Fetal Toxicity
- 5.8 Withdrawal of Antiepileptic Drugs
- 5.9 Decrease in Bone Mineral Density**
- 5.10 Negative Effects on Growth (Height and Weight)**
- 5.11 Serious Skin Reactions

5.12 Hyperammonemia and Encephalopathy (Without and With Concomitant Valproic Acid Use)

5.13 Kidney Stones

5.14 Hypothermia with Concomitant Valproic Acid Use

6 ADVERSE REACTIONS

6.1 Clinical Trials Experience with Immediate-Release Topiramate

6.2 Clinical Trials Experience with Topiramate Extended-Release Capsules

6.3 Postmarketing Experience

7 DRUG INTERACTIONS

7.1 Antiepileptic Drugs

7.2 Other Carbonic Anhydrase Inhibitors

7.3 CNS Depressants

7.4 Oral Contraceptives

7.5 Hydrochlorothiazide (HCTZ)

7.6 Pioglitazone

7.7 Lithium

7.8 Amitriptyline

8 USE IN SPECIFIC POPULATIONS

8.1 Pregnancy

8.2 Lactation

8.3 Females and Males of Reproductive Potential

8.4 Pediatric Use

8.5 Geriatric Use

8.6 Renal Impairment

8.7 Patients Undergoing Hemodialysis

10 OVERDOSAGE

11 DESCRIPTION

12 CLINICAL PHARMACOLOGY

12.1 Mechanism of Action

12.2 Pharmacodynamics

12.3 Pharmacokinetics

12.6 Relative Bioavailability of Topiramate Extended-Release Capsules Compared to Immediate-Release Topiramate in Healthy Volunteers

13 NONCLINICAL TOXICOLOGY

13.1 Carcinogenesis, Mutagenesis, Impairment of Fertility

14 CLINICAL STUDIES

14.1 Extended-Release: Bridging Study to Demonstrate Pharmacokinetic Equivalence between Extended-Release and Immediate-Release Topiramate Formulations

14.2 Monotherapy Epilepsy

14.3 Adjunctive Therapy Epilepsy

14.4 Extended-Release: Adjunctive Therapy in Adult Patients with Partial-Onset Seizures with Topiramate Extended-Release Capsules

14.5 Preventive Treatment of Migraine

16 HOW SUPPLIED/STORAGE AND HANDLING

16.1 How Supplied

16.2 Storage and Handling

17 PATIENT COUNSELING INFORMATION

* Sections or subsections omitted from the full prescribing information are not listed.

FULL PRESCRIBING INFORMATION

1 INDICATIONS AND USAGE

1.1 Monotherapy Epilepsy

Topiramate extended-release capsules are indicated as initial monotherapy for the treatment of partial-onset or primary generalized tonic-clonic seizures in patients 2 years of age and older.

1.2 Adjunctive Therapy Epilepsy

Topiramate extended-release capsules are indicated as adjunctive therapy for the treatment of partial-onset seizures, primary generalized tonic-clonic seizures, and seizures associated with Lennox-Gastaut Syndrome in patients 2 years of age and older.

1.3 Migraine

Topiramate extended-release capsules are indicated for the preventive treatment of migraine in patients 12 years of age and older.

2 DOSAGE AND ADMINISTRATION

2.1 Dosing in Monotherapy Epilepsy

Adults and Pediatric Patients 10 Years of Age and Older

The recommended dose for topiramate extended-release capsules monotherapy in adults and pediatric patients 10 years of age and older is 400 mg orally once daily. Titrate topiramate extended-release capsules according to the following schedule (see Table 1).

Table 1: Monotherapy Titration Schedule for Adults and Pediatric Patients 10 Years of Age and Older

	Topiramate Extended-Release Capsules Once Daily Dose
Week 1	50 mg
Week 2	100 mg
Week 3	150 mg
Week 4	200 mg
Week 5	300 mg
Week 6	400 mg

Pediatric Patients 2 to 9 Years of Age

Dosing in patients 2 to 9 years of age is based on weight. During the titration period, the initial dose of topiramate extended-release capsules is 25 mg/day nightly for the first week. Based upon tolerability, the dosage can be increased to 50 mg/day in the second

week. Dosage can be increased by 25 mg to 50 mg once daily each subsequent week, as tolerated. Titration to the minimum maintenance dose should be attempted over 5 to 7 weeks. Based upon tolerability and clinical response, additional titration to a higher dose (up to the maximum maintenance dose) can be attempted at 25 mg to 50 mg once daily weekly increments. The total daily dose should not exceed the maximum maintenance dose for each range of body weight (see Table 2).

Table 2: Monotherapy Target Total Daily Maintenance Dosing for Patients 2 to 9 Years of Age

Weight (kg)	Total Daily Dose (mg/day) Minimum Maintenance Dose	Total Daily Dose (mg/day) Maximum Maintenance Dose
Up to 11	150	250
12 to 22	200	300
23 to 31	200	350
32 to 38	250	350
Greater than 38	250	400

2.2 Dosing in Adjunctive Therapy Epilepsy

Adults (17 Years of Age and Older)

The recommended total daily dose of topiramate extended-release capsules as adjunctive therapy in adults with partial-onset seizures or Lennox-Gastaut Syndrome is 200 mg to 400 mg orally once daily, and with primary generalized tonic-clonic seizures is 400 mg orally once daily. Initiate therapy at 25 mg to 50 mg once daily followed by titration to an effective dose in increments of 25 mg to 50 mg every week. Titrating in increments of 25 mg/day every week may delay the time to reach an effective dose. Doses above 400 mg/day have not been shown to improve responses in adults with partial-onset seizures.

Pediatric Patients 2 to 16 Years of Age

The recommended total daily dose of topiramate extended-release capsules as adjunctive therapy for pediatric patients 2 to 16 years of age with partial-onset seizures, primary generalized tonic-clonic seizures, or seizures associated with Lennox-Gastaut syndrome is approximately 5 mg/kg to 9 mg/kg orally once daily. Begin titration at 25 mg once daily (or less, based on a range of 1 mg/kg/day to 3 mg/kg/day) given nightly for the first week. Subsequently, increase the dosage at 1- or 2-week intervals by increments of 1 mg/kg/day to 3 mg/kg/day to achieve optimal clinical response. Dose titration should be guided by clinical outcome. The total daily dose should not exceed 400 mg/day.

2.3 Dosing for the Preventive Treatment of Migraine

The recommended total daily dose of topiramate extended-release capsules as treatment for the preventive treatment of migraine in patients 12 years of age and older is 100 mg once daily. The recommended titration rate for topiramate extended-release capsules for the preventive treatment of migraine is as follows:

Table 3: Preventive Treatment of Migraine Titration Schedule for Patients 12

Years of Age and Older

	Topiramate Extended-Release Capsules Once Daily Dose
Week 1	25 mg
Week 2	50 mg
Week 3	75 mg
Week 4	100 mg

Dose and titration rate should be guided by clinical outcome. If required, longer intervals between dose adjustment can be used.

2.4 Dosing in Patients with Renal Impairment

In patients with renal impairment (creatinine clearance less than 70 mL/min/1.73 m²), one-half of the usual adult dose of topiramate extended-release capsules is recommended [see *Use in Specific Populations (8.5, 8.6), Clinical Pharmacology (12.3)*].

2.5 Dosing in Patients Undergoing Hemodialysis

To avoid rapid drops in topiramate plasma concentration during hemodialysis, a supplemental dose of topiramate extended-release capsules may be required. The actual adjustment should take into account 1) the duration of dialysis period, 2) the clearance rate of the dialysis system being used, and 3) the effective renal clearance of topiramate in the patient being dialyzed [see *Use in Specific Populations (8.7), Clinical Pharmacology (12.3)*].

2.6 Administration Instructions

Topiramate extended-release capsules may be swallowed whole or may be administered by carefully opening the capsule and sprinkling the entire contents on a small amount (teaspoon) of soft food. This drug/food mixture should be swallowed immediately and not chewed or crushed. It should not be stored for further use. Topiramate extended-release capsules can be taken without regard to meals [see *Clinical Pharmacology (12.3)*].

3 DOSAGE FORMS AND STRENGTHS

Topiramate Extended-Release Capsules are available in the following strengths and colors:

- 25 mg: flesh colored cap printed with “G” in black ink and light grey body printed with “367” in black ink.
- 50 mg: light orange cap printed with “G” in black ink and light grey body printed with “368” in black ink.
- 100 mg: reddish orange cap printed with “G” in black ink and light grey body printed with “369” in black ink.
- 150 mg: grey cap printed with “G” in black ink and light grey body printed with “370” in black ink.
- 200 mg: brown cap printed with “G” in black ink and light grey body printed with

“371” in black ink.

4 CONTRAINDICATIONS

None.

5 WARNINGS AND PRECAUTIONS

5.1 Acute Myopia and Secondary Angle Closure Glaucoma Syndrome

A syndrome consisting of acute myopia associated with secondary angle closure glaucoma has been reported in patients receiving topiramate. Symptoms include acute onset of decreased visual acuity and/or ocular pain. Ophthalmologic findings can include some or all of the following: myopia, mydriasis, anterior chamber shallowing, ocular hyperemia (redness), choroidal detachments, retinal pigment epithelial detachments, macular striae, and increased intraocular pressure. This syndrome may be associated with supraciliary effusion resulting in anterior displacement of the lens and iris, with secondary angle closure glaucoma. Symptoms typically occur within 1 month of initiating topiramate therapy. In contrast to primary narrow angle glaucoma, which is rare under 40 years of age, secondary angle closure glaucoma associated with topiramate has been reported in pediatric patients as well as adults. The primary treatment to reverse symptoms is discontinuation of topiramate extended-release capsules as rapidly as possible, according to the judgment of the treating physician. Other measures, in conjunction with discontinuation of topiramate extended-release capsules, may be helpful.

Elevated intraocular pressure of any etiology, if left untreated, can lead to serious sequelae including permanent vision loss.

5.2 Visual Field Defects

Visual field defects (independent of elevated intraocular pressure) have been reported in clinical trials and in postmarketing experience in patients receiving topiramate independent of elevated intraocular pressure. In clinical trials, most of these events were reversible after topiramate discontinuation. If visual problems occur at any time during treatment with topiramate, consideration should be given to discontinuing the drug.

5.3 Oligohydrosis and Hyperthermia

Oligohydrosis (decreased sweating), infrequently resulting in hospitalization in some cases, has been reported in association with topiramate use. Decreased sweating and an elevation in body temperature above normal characterized these cases. Some of the cases were reported after exposure to elevated environmental temperatures.

The majority of the reports have been in pediatric patients. Patients (especially pediatric patients) treated with topiramate extended-release capsules should be monitored closely for evidence of decreased sweating and increased body temperature, especially in hot weather. Caution should be used when topiramate extended-release capsules are prescribed with other drugs that predispose patients to heat-related disorders; these drugs include, but are not limited to, other carbonic anhydrase inhibitors and drugs with anticholinergic activity.

5.4 Metabolic Acidosis

Topiramate extended-release capsules can cause hyperchloremic, non-anion gap, metabolic acidosis (i.e., decreased serum bicarbonate below the normal reference range in the absence of chronic respiratory alkalosis). This metabolic acidosis is caused by renal bicarbonate loss due to carbonic anhydrase inhibition by topiramate extended-release capsules. Topiramate extended-release capsules-induced metabolic acidosis can occur at any time during treatment. Bicarbonate decrements are usually mild to moderate (average decrease of 4 mEq/L at daily doses of 400 mg in adults and at approximately 6 mg/kg/day in pediatric patients); rarely, patients can experience severe decrements to values below 10 mEq/L. Conditions or therapies that predispose patients to acidosis (such as renal disease, severe respiratory disorders, status epilepticus, diarrhea, ketogenic diet or specific drugs) may be additive to the bicarbonate lowering effects of topiramate.

Metabolic acidosis was commonly observed in adult and pediatric patients treated with immediate-release topiramate in clinical trials. The incidence of decreased serum bicarbonate in pediatric trials, for adjunctive treatment of Lennox-Gastaut syndrome or refractory partial-onset seizures was as high as 67% for immediate-release topiramate (at approximately 6 mg/kg/day), and 10% for placebo. The incidence of a markedly abnormally low serum bicarbonate (i.e., absolute value < 17 mEq/L and ≥ 5 mEq/L decrease from pretreatment) in these trials was up to 11%, compared to $\leq 2\%$ for placebo.

Manifestations of acute or chronic metabolic acidosis may include hyperventilation, nonspecific symptoms such as fatigue and anorexia, or more severe sequelae including cardiac arrhythmias or stupor. Chronic, untreated metabolic acidosis may increase the risk for nephrolithiasis or nephrocalcinosis and may also result in osteomalacia (referred to as rickets in pediatric patients) and/or osteoporosis with an increased risk for fractures [see *Warnings and Precautions (5.9, 5.13)*]. A one-year, active-controlled study of pediatric patients treated with immediate-release topiramate demonstrated that topiramate decreased lumbar spine bone mineral density and that this lumbar spine bone mineral density decrease was correlated (using change from baseline for lumbar spine Z score at final visit versus lowest post-treatment serum bicarbonate) with decreased serum bicarbonate, a reflection of metabolic acidosis [see *Warnings and Precautions (5.9), Use in Specific Populations (8.4)*]. Chronic metabolic acidosis in pediatric patients may also reduce growth rates, which may decrease the maximal height achieved. Long-term, open-label treatment of pediatric patients 1 to 24 months old with intractable partial epilepsy, for up to 1 year, showed reductions from baseline in length, weight, and head circumference compared to age and sex-matched normative data, although these patients with epilepsy are likely to have different growth rates than normal 1 to 24-month old patients. Reductions in length and weight were correlated to the degree of acidosis [see *Use in Specific Populations (8.4)*]. Topiramate treatment that causes metabolic acidosis during pregnancy can possibly produce adverse effects on the fetus and might also cause metabolic acidosis in the neonate from possible transfer of topiramate to the fetus [see *Warnings and Precautions (5.7), Use in Specific Populations (8.1)*].

Measurement of Serum Bicarbonate in Epilepsy and Migraine Patients

Measurement of baseline and periodic serum bicarbonate during topiramate treatment is recommended. If metabolic acidosis develops and persists, consideration should be

given to reducing the dose or discontinuing topiramate (using dose tapering). If the decision is made to continue patients on topiramate in the face of persistent acidosis, alkali treatment should be considered.

5.5 Suicidal Behavior and Ideation

Antiepileptic drugs (AEDs), including topiramate extended-release capsule increase the risk of suicidal thoughts or behavior in patients taking these drugs for any indication. Patients treated with any AED for any indication should be monitored for the emergence or worsening of depression, suicidal thoughts or behavior, and/or any unusual changes in mood or behavior.

Pooled analyses of 199 placebo-controlled clinical trials (mono- and adjunctive therapy) of 11 different AEDs showed that patients randomized to one of the AEDs had approximately twice the risk (adjusted Relative Risk 1.8, 95% CI:1.2, 2.7) of suicidal thinking or behavior compared to patients randomized to placebo. In these trials, which had a median treatment duration of 12 weeks, the estimated incidence rate of suicidal behavior or ideation among 27,863 AED-treated patients was 0.43%, compared to 0.24% among 16,029 placebo-treated patients, representing an increase of approximately one case of suicidal thinking or behavior for every 530 patients treated. There were four suicides in drug-treated patients in the trials and none in placebo-treated patients, but the number is too small to allow any conclusion about drug effect on suicide.

The increased risk of suicidal thoughts or behavior with AEDs was observed as early as one week after starting drug treatment with AEDs and persisted for the duration of treatment assessed. Because most trials included in the analysis did not extend beyond 24 weeks, the risk of suicidal thoughts or behavior beyond 24 weeks could not be assessed.

The risk of suicidal thoughts or behavior was generally consistent among drugs in the data analyzed. The finding of increased risk with AEDs of varying mechanisms of action and across a range of indications suggests that the risk applies to all AEDs used for any indication. The risk did not vary substantially by age (5 to 100 years) in the clinical trials analyzed.

Table 4 shows absolute and relative risk by indication for all evaluated AEDs.

Table 4: Risk by Indication for Antiepileptic Drugs in the Pooled Analysis

Indication	Placebo Patients with Events per 1,000 Patients	Drug Patients with Events per 1,000 Patients	Relative Risk: Incidence of Events in Drug Patients/ Incidence in Placebo Patients	Risk Difference: Additional Drug Patients with Events per 1,000 Patients
Epilepsy	1	3.4	3.5	2.4
Psychiatric	5.7	8.5	1.5	2.9
Other	1	1.8	1.9	0.9
Total	2.4	4.3	1.8	1.9

The relative risk for suicidal thoughts or behavior was higher in clinical trials for epilepsy

than in clinical trials for psychiatric or other conditions, but the absolute risk differences were similar for the epilepsy and psychiatric indications.

Anyone considering prescribing topiramate extended-release capsules or any other AED must balance the risk of suicidal thoughts or behavior with the risk of untreated illness. Epilepsy and many other illnesses for which AEDs are prescribed are themselves associated with morbidity and mortality and an increased risk of suicidal thoughts and behavior. Should suicidal thoughts and behavior emerge during treatment, the prescriber needs to consider whether the emergence of these symptoms in any given patient may be related to the illness being treated.

5.6 Cognitive/Neuropsychiatric Adverse Reactions

Immediate-release topiramate can cause cognitive/neuropsychiatric adverse reactions and therefore these are expected to be caused by topiramate extended-release capsules. The most frequent of these can be classified into three general categories: 1) Cognitive-related dysfunction (e.g., confusion, psychomotor slowing, difficulty with concentration/attention, difficulty with memory, speech or language problems, particularly word-finding difficulties); 2) Psychiatric/behavioral disturbances (e.g., depression or mood problems); and 3) Somnolence or fatigue.

Adult Patients

Cognitive Related Dysfunction

Rapid titration rate and higher initial dose were associated with higher incidences of cognitive-related dysfunction.

In adult epilepsy adjunctive controlled trials, which used rapid titration (100 to 200 mg/day weekly increments) and target immediate-release topiramate doses of 200 mg to 1,000 mg/day, 56% of patients in the 800 mg/day and 1,000 mg/day dose groups experienced cognitive-related dysfunction compared to approximately 42% of patients in the 200 to 400 mg/day groups and 14% for placebo. In this rapid titration regimen, these dose-related adverse reactions began in the titration or in the maintenance phase, and in some patients these events began during titration and persisted into the maintenance phase.

In the monotherapy epilepsy-controlled trial conducted with immediate-release topiramate, the proportion of patients who experienced one or more cognitive-related adverse reactions was 19% for topiramate 50 mg per day and 26% for 400 mg per day.

In the 6-month controlled trials for the preventive treatment of migraine, which used a slower titration regimen (25 mg/day weekly increments), the proportion of patients who experienced one or more cognitive-related adverse reactions was 19% for topiramate 50 mg/day, 22% for 100 mg/day (the recommended dose), 28% for 200 mg/day, and 10% for placebo. Cognitive adverse reactions most commonly developed during titration and sometimes persisted after completion of titration.

Psychiatric/Behavioral Disturbances

Psychiatric/behavioral disturbances (e.g., depression, mood) were dose-related for both the adjunctive epilepsy and migraine populations treated with topiramate [see *Warnings and Precautions* (5.5)].

Somnolence/Fatigue

Somnolence and fatigue were the adverse reactions most frequently reported during clinical trials of topiramate for adjunctive epilepsy. For the adjunctive epilepsy population, the incidence of fatigue appeared dose-related. For the monotherapy epilepsy population, the incidence of somnolence was dose-related. For the migraine population, the incidences of both somnolence and fatigue were dose-related and more common in the titration phase.

Pediatric Patients

In pediatric epilepsy trials (adjunctive and monotherapy), the incidence of cognitive/neuropsychiatric adverse reactions was generally lower than that observed in adults. These reactions included psychomotor slowing, difficulty with concentration/attention, speech disorders/related speech problems, and language problems. The most frequently reported cognitive/neuropsychiatric reactions in pediatric epilepsy patients during adjunctive therapy double-blind studies were somnolence and fatigue. The most frequently reported cognitive/neuropsychiatric reactions in pediatric epilepsy patients in the 50 mg/day and 400 mg/day groups during the monotherapy double-blind study were headache, dizziness, anorexia, and somnolence.

In pediatric migraine patients, the incidence of cognitive/neuropsychiatric adverse reactions was increased in topiramate-treated patients compared to placebo.

The risk for cognitive/neuropsychiatric adverse reactions was dose-dependent and was greatest at the highest dose (200 mg). This risk for cognitive/neuropsychiatric adverse reactions was also greater in younger patients (6 to 11 years of age) than in older patients (12 to 17 years of age). The most common cognitive/neuropsychiatric adverse reaction in these trials was difficulty with concentration/attention. Cognitive adverse reactions most commonly developed during the titration period and sometimes persisted for various durations after completion of titration.

The Cambridge Neuropsychological Test Automated Battery (CANTAB) was administered to adolescents (12 to 17 years of age) to assess the effects of topiramate on cognitive function at baseline and at the end of the Study 13 [see *Clinical Studies (14.5)*]. Mean change from baseline in certain CANTAB tests suggests that topiramate treatment may result in psychomotor slowing and decreased verbal fluency.

5.7 Fetal Toxicity

Topiramate can cause fetal harm when administered to a pregnant woman. Data from pregnancy registries indicate that infants exposed to topiramate *in utero* have an increased risk of major congenital malformation, including but not limited to cleft lip and/or cleft palate (oral clefts), and of being small for gestational age (SGA). When multiple species of pregnant animals received topiramate at clinically relevant doses, structural malformations, including craniofacial defects, and reduced fetal weights occurred in offspring [see *Use in Specific Populations (8.1)*].

Consider the benefits and risks of topiramate extended-release capsules when administering this drug in women of childbearing potential, particularly when topiramate extended-release capsules are considered for a condition not usually associated with permanent injury or death [see *Use in Specific Populations (8.1)*, *Patient Counseling Information (17)*]. Topiramate extended-release capsules should be used during pregnancy only if the potential benefit outweighs the potential risk. If this drug is used during pregnancy, or if the patient becomes pregnant while taking this drug, the patient

should be informed of the potential hazard to a fetus [see *Use in Specific Populations* (8.1)].

5.8 Withdrawal of Antiepileptic Drugs

In patients with or without a history of seizures or epilepsy, antiepileptic drugs, including topiramate extended-release capsules, should be gradually withdrawn to minimize the potential for seizures or increased seizure frequency [see *Clinical Studies* (14)]. In situations where rapid withdrawal of topiramate extended-release capsules are medically required, appropriate monitoring is recommended.

5.9 Decrease in Bone Mineral Density

Results of a one-year active-controlled study in pediatric patients (N=63) demonstrated negative effects of immediate-release topiramate monotherapy on bone mineral acquisition via statistically significant decreases in bone mineral density (BMD) measured in lumbar spine and in total body less head [see *Use in Specific Populations* (8.4)]. Twenty-one percent of immediate-release topiramate-treated patients experienced clinically important reductions in BMD (Z score change from baseline of -0.5 or greater) compared to 0 patients in the control group. Although decreases in BMD occurred across all pediatric age subgroups, patients 6 to 9 years of age were most commonly affected. The sample size and study duration were too small to determine if fracture risk is increased. Decreased BMD in the lumbar spine was correlated with decreased serum bicarbonate, which commonly occurs with topiramate treatment and reflects metabolic acidosis, a known cause of increased bone resorption [see *Warnings and Precautions* (5.4)]. Although small decreases in some markers of bone metabolism (e.g., serum alkaline phosphatase, calcium, phosphorus, and 1,25-dihydroxyvitamin D) occurred in immediate-release topiramate-treated patients, more significant decreases in serum parathyroid hormone and 25-hydroxyvitamin D, hormones involved in bone metabolism, were observed, along with an increased excretion of urinary calcium.

5.10 Negative Effects on Growth (Height and Weight)

Results of a one-year active-controlled study of pediatric patients (N=63) demonstrated negative effects of immediate-release topiramate monotherapy on growth (i.e., height and weight) [see *Use in Specific Populations* (8.4)]. Although continued growth was observed in both treatment groups, the immediate-release topiramate group showed statistically significant reductions in mean annual change from baseline in body weight compared to the control group. A similar trend of attenuation in height velocity and height change from baseline was also observed in the immediate-release topiramate group compared to the control group. Negative effects on weight and height were seen across all topiramate age subgroups. Growth (height and weight) of children receiving prolonged topiramate extended-release capsules therapy should be carefully monitored.

5.11 Serious Skin Reactions

Serious skin reactions (Stevens-Johnson Syndrome [SJS] and Toxic Epidermal Necrolysis [TEN]) have been reported in patients receiving topiramate. Topiramate extended-release capsules should be discontinued at the first sign of a rash, unless the rash is clearly not drug-related. If signs or symptoms suggest SJS/TEN, use of this drug should not be resumed and alternative therapy should be considered. Inform patients about the signs of serious skin reactions.

5.12 Hyperammonemia and Encephalopathy (Without and With Concomitant Valproic Acid Use)

Topiramate treatment can cause hyperammonemia with or without encephalopathy [see *Adverse Reactions (6.2)*]. The risk for hyperammonemia with topiramate appears dose-related. Hyperammonemia has been reported more frequently when topiramate is used concomitantly with valproic acid. Post-marketing cases of hyperammonemia with or without encephalopathy have been reported with topiramate and valproic acid in patients who previously tolerated either drug alone [see *Drug Interactions (7.1)*].

Clinical symptoms of hyperammonemic encephalopathy often include acute alterations in level of consciousness and/or cognitive function with lethargy and/or vomiting. In most cases, hyperammonemic encephalopathy abated with discontinuation of treatment.

The incidence of hyperammonemia in pediatric patients 12 to 17 years of age in the preventive treatment of migraine trials was 26% in patients taking topiramate monotherapy at 100 mg/day, and 14% in patients taking topiramate at 50 mg/day, compared to 9% in patients taking placebo. There was also an increased incidence of markedly increased hyperammonemia at the 100 mg dose.

Dose-related hyperammonemia was also seen in pediatric patients 1 to 24 months of age treated with topiramate and concomitant valproic acid for partial-onset epilepsy and this was not due to a pharmacokinetic interaction.

In some patients, hyperammonemia can be asymptomatic.

Monitoring for Hyperammonemia

Patients with inborn errors of metabolism or reduced hepatic mitochondrial activity may be at an increased risk for hyperammonemia with or without encephalopathy. Although not studied, topiramate treatment or an interaction of concomitant topiramate and valproic acid treatment may exacerbate existing defects or unmask deficiencies in susceptible persons.

In patients who develop unexplained lethargy, vomiting or changes in mental status associated with any topiramate treatment, hyperammonemic encephalopathy should be considered and an ammonia level should be measured.

5.13 Kidney Stones

Topiramate increases the risk of kidney stones. During adjunctive epilepsy trials, the risk for kidney stones in immediate-release topiramate-treated adults was 1.5%, an incidence about 2 to 4 times greater than expected in a similar, untreated population. As in the general population, the incidence of stone formation among topiramate-treated patients was higher in men. Kidney stones have also been reported in pediatric patients taking topiramate for epilepsy or migraine. During long-term (up to 1 year) topiramate treatment in an open-label extension study of 284 pediatric patients 1 to 24 months old with epilepsy, 7% developed kidney or bladder stones. Topiramate extended-release capsules are not approved for treatment of epilepsy in pediatric patients less than 2 years old [see *Use in Specific Populations (8.4)*].

Topiramate is a carbonic anhydrase inhibitor. Carbonic anhydrase inhibitors can promote stone formation by reducing urinary citrate excretion and by increasing urinary pH [see *Warnings and Precautions (5.4)*]. The concomitant use of topiramate extended-release

capsules with any other drug producing metabolic acidosis, or potentially in patients on a ketogenic diet, may create a physiological environment that increases the risk of kidney stone formation, and should therefore be avoided.

Increased fluid intake increases the urinary output, lowering the concentration of substances involved in stone formation. Hydration is recommended to reduce new stone formation.

An increase in urinary calcium and a marked decrease in urinary citrate was observed in immediate-release topiramate-treated pediatric patients in one-year active-controlled study [see *Use in Specific Populations* (8.4)]. This increased ratio of urinary calcium/citrate increases the risk of kidney stones and/or nephrocalcinosis.

5.14 Hypothermia with Concomitant Valproic Acid Use

Hypothermia, defined as a drop-in body core temperature to $<35^{\circ}\text{C}$ (95°F), has been reported in association with topiramate use with concomitant valproic acid both in conjunction with hyperammonemia and in the absence of hyperammonemia. This adverse reaction in patients using concomitant topiramate and valproate can occur after starting topiramate treatment or after increasing the daily dose of topiramate [see *Drug Interactions* (7.1)]. Consideration should be given to stopping topiramate or valproate in patients who develop hypothermia, which may be manifested by a variety of clinical abnormalities including lethargy, confusion, coma, and significant alterations in other major organ systems such as the cardiovascular and respiratory systems. Clinical management and assessment should include examination of blood ammonia levels.

6 ADVERSE REACTIONS

The following serious adverse reactions are discussed in more detail in other sections of the labeling:

- Acute Myopia and Secondary Angle Closure Glaucoma [see *Warnings and Precautions* (5.1)]
- Visual Field Defects [see *Warnings and Precautions* (5.2)]
- Oligohydrosis and Hyperthermia [see *Warnings and Precautions* (5.3)]
- Metabolic Acidosis [see *Warnings and Precautions* (5.4)]
- Suicidal Behavior and Ideation [see *Warnings and Precautions* (5.5)]
- Cognitive/Neuropsychiatric Adverse Reactions [see *Warnings and Precautions* (5.6)]
- Decrease in Bone Mineral Density [see *Warnings and Precautions* (5.9)]
- Negative Effects on Growth (Height and Weight) [see *Warnings and Precautions* (5.10)]
- Serious Skin Reactions [see *Warnings and Precautions* (5.11)]
- Hyperammonemia and Encephalopathy (Without and With Concomitant Valproic Acid Use) [see *Warnings and Precautions* (5.12)]
- Kidney Stones [see *Warnings and Precautions* (5.13)]
- Hypothermia with Concomitant Valproic Acid Use [see *Warnings and Precautions* (5.14)]

The data described in section 6.1 were obtained using immediate-release topiramate tablets.

6.1 Clinical Trials Experience with Immediate-Release Topiramate

Because clinical trials are conducted under widely varying conditions, adverse reaction rates observed in the clinical trials of a drug cannot be directly compared to rates in the clinical trials of another drug and may not reflect the rates observed in clinical practice.

Monotherapy Epilepsy

Adults 16 Years of Age and Older

The most common adverse reactions in the controlled trial (Study 1) that occurred in adults in the 400 mg/day topiramate group and at an incidence higher ($\geq 10\%$) than in the 50 mg/day group were: paresthesia, weight loss, and anorexia (see Table 5).

Approximately 21% of the 159 adult patients in the 400 mg/day group who received topiramate as monotherapy in Study 1 discontinued therapy due to adverse reactions. The most common ($\geq 2\%$ more frequent than low-dose 50 mg/day topiramate) adverse reactions causing discontinuation were difficulty with memory, fatigue, asthenia, insomnia, somnolence, and paresthesia.

Pediatric Patients 6 to 15 Years of Age

The most common adverse reactions in the controlled trial (Study 1) that occurred in pediatric patients in the 400 mg/day topiramate group and at an incidence higher ($\geq 10\%$) than in the 50 mg/day group were fever and weight loss (see Table 5).

Approximately 14% of the 77 pediatric patients in the 400 mg/day group who received topiramate as monotherapy in the controlled clinical trial discontinued therapy due to adverse reactions. The most common ($\geq 2\%$ more frequent than in the 50 mg/day group) adverse reactions resulting in discontinuation in this trial were difficulty with concentration/attention, fever, flushing, and confusion.

Table 5 represents the incidence of adverse reactions occurring in at least 3% of the adult and pediatric patients treated with 400 mg/day immediate-release topiramate and occurring with greater incidence than 50 mg/day topiramate.

Table 5: Adverse Reactions in the High Dose Group as Compared to the Low Dose Group, in Monotherapy Epilepsy Trials (Study 1) in Adult and Pediatric Patients

Body System/ Adverse Reaction	Age Group			
	Pediatric (6 to 15 Years)		Adult (Age ≥16 Years)	
	Immediate-release Topiramate Daily Dosage Group (mg/day)			
	50 (N=74)	400 (N=77)	50 (N=160)	400 (N=159)
	%	%	%	%
Body as a Whole-General Disorders				
Asthenia	0	3	4	6
Fever	1	12		

Leg pain			2	3
Central & Peripheral Nervous System Disorders				
Paresthesia	3	12	21	40
Dizziness			13	14
Ataxia			3	4
Hypoesthesia			4	5
Hypertonia			0	3
Involuntary Muscle contraction	0	3		
Vertigo	0	3		
Gastro-Intestinal System Disorders				
Constipation			1	4
Diarrhea	8	9		
Gastritis			0	3
Dry mouth			1	3
Liver and Biliary System Disorders				
Increase in Gamma-GT			1	3
Metabolic and Nutritional Disorders				
Weight loss	7	17	6	17
Platelet, Bleeding & Clotting Disorders				
Epistaxis	0	4		
Psychiatric Disorders				
Anorexia			4	14

Anxiety			4	6
Cognitive problems	1	6	1	4
Confusion	0	3		
Depression	0	3	7	9
Difficulty with concentration or attention	7	10	7	8
Difficulty with memory	1	3	6	11
Insomnia			8	9
Decrease in libido			0	3
Mood problems	1	8	2	5
Personality disorder (behavior problems)	0	3		
Psychomotor slowing			3	5
Somnolence			10	15

Red Blood Cell Disorders

Anemia	1	3		
--------	---	---	--	--

Reproductive Disorders, Female

Intermenstrual bleeding	0	3		
Vaginal hemorrhage			0	3

Resistance Mechanism Disorders

Infection	3	8	2	3
-----------	---	---	---	---

Viral infection	3	6	6	8
Respiratory System Disorders				
Bronchitis	1	5	3	4
Upper respiratory tract infection	16	18		
Rhinitis	5	6	2	4
Sinusitis	1	4		
Skin and Appendages Disorders				
Alopecia	1	4	3	4
Pruritus			1	4
Rash	3	4	1	4
Acne			2	3
Special Senses Other, Disorders				
Taste perversion			3	5
Urinary System Disorders				
Cystitis			1	3
Micturition frequency	0	3	0	2
Renal calculus			0	3
Urinary incontinence	1	3		
Vascular (Extracardiac) Disorders				
Flushing	0	5		

Adjunctive Therapy Epilepsy

Adults 16 Years of Age and Older

In pooled controlled clinical trials in adults with partial-onset seizures, primary generalized tonic-clonic seizures, or Lennox-Gastaut syndrome, 183 patients received adjunctive therapy with immediate-release topiramate at dosages of 200 to 400 mg/day (recommended dosage range) and 291 patients received placebo. Patients in these trials were receiving 1 to 2 concomitant antiepileptic drugs in addition to immediate-release topiramate or placebo.

The most common adverse reactions in the controlled clinical trial that occurred in adult patients in the 200 to 400 mg/day topiramate group with an incidence higher ($\geq 10\%$) than in the placebo group were: dizziness, speech disorders/related speech problems, somnolence, nervousness, psychomotor slowing, and vision abnormal (Table 6).

Table 6 presents the incidence of adverse reactions occurring in at least 3% of adult patients treated with 200 to 400 mg/day topiramate and was greater than placebo incidence. The incidence of some adverse reactions (e.g., fatigue, dizziness, paresthesia, language problems, psychomotor slowing, depression, difficulty with concentration/attention, mood problems) was dose-related and much greater at higher than recommended topiramate dosing (i.e., 600 mg to 1,000 mg daily) compared to the incidence of these adverse reactions at the recommended dosing (200 mg to 400 mg daily) range.

Table 6: Most Common Adverse Reactions in Pooled Placebo-Controlled, Adjunctive Epilepsy Trials in Adults^a

Body System/ Adverse Reaction	Placebo (N=291)	Topiramate Dosage (mg/day)
		200 to 400 (N=183)
Body as a Whole-General Disorders		
Fatigue	13	15
Asthenia	1	6
Back pain	4	5
Chest pain	3	4
Influenza-like symptoms	2	3
Central & Peripheral Nervous System Disorders		
Dizziness	15	25
Ataxia	7	16

Speech disorders/Related speech problems	2	13
Paresthesia	4	11
Nystagmus	7	10
Tremor	6	9
Language problems	1	6
Coordination abnormal	2	4
Gait abnormal	1	3

Gastro-Intestinal System Disorders

Nausea	8	10
Dyspepsia	6	7
Abdominal pain	4	6
Constipation	2	4

Metabolic and Nutritional Disorders

Weight loss	3	9
-------------	---	---

Psychiatric Disorders

Somnolence	12	29
Nervousness	6	16
Psychomotor slowing	2	13
Difficulty with memory	3	12
Confusion	5	11

Anorexia	4	10
Difficulty with concentration/attention	2	6
Mood problems	2	4
Agitation	2	3
Aggressive reaction	2	3
Emotional lability	1	3
Cognitive problems	1	3
Reproductive Disorders		
Breast pain	2	4
Respiratory System Disorders		
Rhinitis	6	7
Pharyngitis	2	6
Sinusitis	4	5
Vision Disorders		
Vision abnormal	2	13
Diplopia	5	10

^aPatients in these adjunctive trials were receiving 1 to 2 concomitant antiepileptic drugs in addition to topiramate or placebo

In controlled clinical trials in adults, 11% of patients receiving immediate-release topiramate 200 to 400 mg/day as adjunctive therapy discontinued due to adverse reactions. This rate appeared to increase at dosages above 400 mg/day. Adverse reactions associated with discontinuing therapy included somnolence, dizziness, anxiety, difficulty with concentration or attention, fatigue, and paresthesia.

Pediatric Patients 2 to 15 Years of Age

In pooled, controlled clinical trials in pediatric patients (2 to 15 years of age) with partial-

onset seizures, primary generalized tonic-clonic seizures, or Lennox-Gastaut syndrome, 98 patients received adjunctive therapy with immediate-release topiramate at dosages of 5 mg to 9 mg/kg/day (recommended dose range) and 101 patients received placebo.

The most common adverse reactions in the controlled clinical trial that occurred in pediatric patients in the 5 mg to 9 mg/kg/day immediate-release topiramate group with an incidence higher ($\geq 10\%$) than in the placebo group were: fatigue and somnolence (see Table 7).

Table 7 presents the incidence of adverse reactions that occurred in at least 3% of pediatric patients 2 to 15 years of age receiving 5 mg to 9 mg/kg/day (recommended dose range) of immediate-release topiramate and was greater than placebo incidence.

Table 7: Adverse Reactions in Pooled Placebo-Controlled, Adjunctive Epilepsy Trials in Pediatric Patients 2 to 15 Years of Age^{a,b}

Body System/ Adverse Reaction	Placebo (N=101)	Topiramate (N=98)
Body as a Whole-General Disorders		
Fatigue	5	16
Injury	13	14
Central & Peripheral Nervous System Disorders		
Gait abnormal	5	8
Ataxia	2	6
Hyperkinesia	4	5
Dizziness	2	4
Speech disorders/Related speech problems	2	4
Gastro-Intestinal System Disorders		
Nausea	5	6
Saliva increased	4	6
Constipation	4	5
Gastroenteritis	2	3

Metabolic and Nutritional Disorders

Weight loss	1	9
-------------	---	---

Platelet, Bleeding, & Clotting Disorders

Purpura	4	8
---------	---	---

Epistaxis	1	4
-----------	---	---

Psychiatric Disorders

Somnolence	16	26
------------	----	----

Anorexia	15	24
----------	----	----

Nervousness	7	14
-------------	---	----

Personality disorder (behavior problems)	9	11
--	---	----

Difficulty with concentration/attention	2	10
---	---	----

Aggressive reaction	4	9
---------------------	---	---

Insomnia	7	8
----------	---	---

Difficulty with memory	0	5
------------------------	---	---

Confusion	3	4
-----------	---	---

Psychomotor slowing	2	3
---------------------	---	---

Resistance Mechanism Disorders

Infection viral	3	7
-----------------	---	---

Respiratory System Disorders

Pneumonia	1	5
-----------	---	---

Skin and Appendages Disorders

Skin disorder	2	3
---------------	---	---

Urinary System Disorders

Urinary incontinence

2

4

^a Patients in these adjunctive trials were receiving 1 to 2 concomitant antiepileptic drugs in addition to topiramate or placebo

^b Values represent the percentage of patients reporting a given adverse reaction. Patients may have reported more than one adverse reaction during the study and can be included in more than one adverse reaction category

None of the pediatric patients who received topiramate adjunctive therapy at 5 to 9 mg/kg/day in controlled clinical trials discontinued due to adverse reactions.

Migraine

Adults

In the four multicenter, randomized, double-blind, placebo-controlled, parallel group migraine clinical trials for the preventive treatment of migraine (which included 35 adolescent patients age 12 to 15 years of age), most of the adverse reactions with topiramate were mild or moderate in severity. Most adverse reactions occurred more frequently during the titration period than during the maintenance period.

The most common adverse reactions with immediate-release topiramate 100 mg in clinical trials for the preventive treatment of migraine of predominantly adults that were seen at an incidence higher ($\geq 5\%$) than in the placebo group were paresthesia, anorexia, weight loss, taste perversion, diarrhea, difficulty with memory, hypoesthesia, and nausea (see Table 8).

Table 8 includes those adverse reactions that occurred in the placebo-controlled trials where the incidence in any immediate-release topiramate treatment group was at least 3% and was greater than that for placebo patients. The incidence of some adverse reactions (e.g., fatigue, dizziness, somnolence, difficulty with memory, difficulty with concentration/attention) was dose-related and greater at higher than recommended topiramate dosing (200 mg daily) compared to the incidence of these adverse reactions at the recommended dosing (100 mg daily).

Table 8: Adverse Reactions in Pooled, Placebo-Controlled, Migraine Trials in Adults^{a,b}

Body System/ Adverse Reaction	Placebo (N=445) %	Topiramate Dosage (mg/day)	
		50 (N=235) %	100 (N=386) %
Body as a Whole-General Disorders			
Fatigue	11	14	15
Injury	7	9	6

Central & Peripheral Nervous System Disorders

Paresthesia	6	35	51
Dizziness	10	8	9
Hypoesthesia	2	6	7
Language problems	2	7	6

Gastro-Intestinal System Disorders

Nausea	8	9	13
Diarrhea	4	9	11
Abdominal pain	5	6	6
Dyspepsia	3	4	5
Dry mouth	2	2	3
Gastroenteritis	1	3	3

Metabolic and Nutritional Disorders

Weight loss	1	6	9
-------------	---	---	---

Musculoskeletal System Disorders

Arthralgia	2	7	3
------------	---	---	---

Psychiatric Disorders

Anorexia	6	9	15
Somnolence	5	8	7
Difficulty with memory	2	7	7
Insomnia	5	6	7
Difficulty with	2	2	6

concentration/attention	4	3	0
Mood problems	2	3	6
Anxiety	3	4	5
Depression	4	3	4
Nervousness	2	4	4
Confusion	2	2	3
Psychomotor slowing	1	3	2
Reproductive Disorders, Female			
Menstrual disorder	2	3	2
Reproductive Disorders, Male			
Ejaculation premature	0	3	0
Resistance Mechanism Disorders			
Viral infection	3	4	4
Respiratory System Disorders			
Upper respiratory tract infection	12	13	14
Sinusitis	6	10	6
Pharyngitis	4	5	6
Coughing	2	2	4
Bronchitis	2	3	3
Dyspnea	2	1	3
Skin and Appendages Disorders			
Pruritis	2	4	2

Special Sense Other, Disorders

Taste perversion	1	15	8
------------------	---	----	---

Urinary System Disorders

Urinary tract infection	2	4	2
-------------------------	---	---	---

Vision Disorders

Blurred vision ^c	2	4	2
-----------------------------	---	---	---

^aIncludes 35 adolescent patients age 12 to 15 years.

^bValues represent the percentage of patients reporting a given adverse reaction. Patients may have reported more than one adverse reaction during the study and can be included in more than one adverse reaction category.

^cBlurred vision was the most common term considered as vision abnormal. Blurred vision was an included term that accounted for >50% of reactions coded as vision abnormal, a preferred term.

Of the 1,135 patients exposed to immediate-release topiramate in the adult placebo-controlled studies, 25% discontinued due to adverse reactions, compared to 10% of the 445 placebo-treated patients. The adverse reactions associated with discontinuing therapy in the immediate-release topiramate-treated patients in these studies included paresthesia (7%), fatigue (4%), nausea (4%), difficulty with concentration/attention (3%), insomnia (3%), anorexia (2%), and dizziness (2%).

Patients treated in these studies experienced mean percent reductions in body weight that were dose-dependent. This change was not seen in the placebo group. Mean changes of 0%, -2%, -3%, and -4% were seen for the placebo group, immediate-release topiramate 50 mg, 100 mg, and 200 mg groups, respectively.

Pediatric Patients 12 to 17 Years of Age

In five, randomized, double-blind, placebo-controlled, parallel group clinical trials for the preventive treatment of migraine, most of the adverse reactions with immediate-release topiramate occurred more frequently during the titration period than during the maintenance period. Among adverse reactions with onset during titration, approximately half persisted into the maintenance period.

In four, fixed-dose, double-blind clinical trials for the preventive treatment of migraine in immediate-release topiramate-treated pediatric patients 12 to 17 years of age, the most common adverse reactions immediate-release topiramate 100 mg that were seen at an incidence higher ($\geq 5\%$) than in the placebo group were: paresthesia, upper respiratory tract infection, anorexia, and abdominal pain (see Table 9). Table 9 shows adverse reactions from the pediatric trial [Study 13; see *Clinical Studies (14.5)*] in which 103 pediatric patients were treated with placebo or 50 mg or 100 mg of immediate-release topiramate, and three predominantly adult trials in which 49 pediatric patients (12 to 17 years of age) were treated with placebo or 50 mg, 100 mg, or 200 mg of immediate-release topiramate [see *Clinical Studies (14.5)*]. Table 9 also shows adverse reactions in pediatric patients in the controlled migraine trials when the incidence in an immediate-

release topiramate dose group was at least 5% or higher and greater than the incidence of placebo. Many adverse reactions shown in Table 9 indicate a dose-dependent relationship. The incidence of some adverse reactions (e.g., allergy, fatigue, headache, anorexia, insomnia, somnolence, and viral infection) was dose-related and greater at higher than recommended immediate-release topiramate dosing (200 mg daily) compared to the incidence of these adverse reactions at the recommended dose (100 mg daily).

Table 9: Adverse Reactions in Pooled, Double-Blind Studies for the Preventive Treatment of Migraine in Pediatric Patients 12 to 17 Years of Age^{a,b,c}

Body System/ Adverse Reaction	Placebo (N=45) %	Topiramate Dosage	
		50 mg/day (N=46) %	100 mg/day (N=48) %
Body as a Whole-General Disorders			
Fatigue	7	7	8
Fever	2	4	6
Central & Peripheral Nervous System Disorders			
Paresthesia	7	20	19
Dizziness	4	4	6
Gastro-Intestinal System Disorders			
Abdominal pain	9	7	15
Nausea	4	4	8
Metabolic and Nutritional Disorders			
Weight loss	2	7	4
Psychiatric Disorders			
Anorexia	4	9	10
Somnolence	2	2	6
Insomnia	2	9	2
Resistance Mechanism Disorders			

Infection viral	4	4	8
Respiratory System Disorders			
Upper respiratory tract infection	11	26	23
Rhinitis	2	7	6
Sinusitis	2	9	4
Coughing	0	7	2
Special Senses Other, Disorders			
Taste perversion	2	2	6
Vision Disorders			
Conjunctivitis	4	7	4

^a35 adolescent patients aged 12 to <16 years were also included in adverse reaction assessment for adults.

^bIncidence is based on the number of subjects experiencing at least 1 adverse event, not the number of events.

^cIncluded studies MIG-3006, MIGR-001, MIGR-002 and MIGR-003

In the double-blind placebo-controlled studies, adverse reactions led to discontinuation of treatment in 8% of placebo patients compared with 6% of immediate-release topiramate-treated patients. Adverse reactions associated with discontinuing therapy that occurred in more than one immediate-release topiramate-treated patient were fatigue (1%), headache (1%), and somnolence (1%).

Increased Risk for Bleeding

Topiramate is associated with an increased risk for bleeding. In a pooled analysis of placebo-controlled studies of approved and unapproved indications, bleeding was more frequently reported as an adverse reaction for topiramate than for placebo (4.5% versus 3.0% in adult patients, and 4.4% versus 2.3% in pediatric patients). In this analysis, the incidence of serious bleeding events for topiramate and placebo was 0.3% versus 0.2% for adult patients, and 0.4% versus 0% for pediatric patients.

Adverse bleeding reactions reported with topiramate ranged from mild epistaxis, ecchymosis, and increased menstrual bleeding to life-threatening hemorrhages. In patients with serious bleeding events, conditions that increased the risk for bleeding were often present, or patients were often taking drugs that cause thrombocytopenia (other antiepileptic drugs) or affect platelet function or coagulation (e.g., aspirin, nonsteroidal anti-inflammatory drugs, selective serotonin reuptake inhibitors, or warfarin or other anticoagulants).

Other Adverse Reactions Observed During Clinical Trials

Other adverse reactions seen during clinical trials were: abnormal coordination, eosinophilia, gingival bleeding, hematuria, hypotension, myalgia, myopia, postural hypotension, scotoma, suicide attempt, syncope, and visual field defect.

Laboratory Test Abnormalities

Adult Patients

In addition to changes in serum bicarbonate (i.e., metabolic acidosis), sodium chloride and ammonia, immediate-release topiramate was associated with changes in several clinical laboratory analytes in randomized, double-blind, placebo-controlled studies [see *Warnings and Precautions (5.4, 5.12)*]. Controlled trials of adjunctive topiramate treatment of adults for partial-onset seizures showed an increased incidence of markedly decreased serum phosphorus (6% topiramate versus 2% placebo), markedly increased serum alkaline phosphatase (3% topiramate versus 1% placebo), and decreased serum potassium (0.4% topiramate versus 0.1% placebo).

Pediatric Patients

In pediatric patients (1 to 24 months) receiving adjunctive topiramate for partial-onset seizures, there was an increased incidence for an increased result (relative to normal analyte reference range) associated with topiramate (vs placebo) for the following clinical laboratory analytes: creatinine, BUN, alkaline phosphatase, and total protein. The incidence was also increased for a decreased result for bicarbonate (i.e., metabolic acidosis), and potassium with immediate-release (vs placebo) [see *Use in Specific Populations (8.4)*]. Topiramate extended-release capsules are not indicated for partial-onset seizures in pediatric patients less than 2 years of age.

In pediatric patients (ranging from 6 to 17 years of age) receiving immediate-release topiramate for the preventive treatment of migraine, there was an increased incidence for an increased result (relative to normal analyte reference range) associated with immediate-release topiramate (vs placebo) for the following clinical laboratory analytes: creatinine, BUN, uric acid, chloride, ammonia, alkaline phosphatase, total protein, platelets, and eosinophils. The incidence was also increased for a decreased result for phosphorus, bicarbonate, total white blood count, and neutrophils [see *Use in Specific Populations (8.4)*]. Topiramate extended-release capsules are not indicated for the preventive treatment of migraine in pediatric patients less than 12 years of age.

6.2 Clinical Trials Experience with Topiramate Extended-Release Capsules

Because clinical trials are conducted under widely varying conditions, adverse reaction rates observed in the clinical trials of a drug cannot be directly compared to rates in the clinical trials of another drug and may not reflect the rates observed in clinical practice. In the topiramate extended-release capsules study, a dose of 200 mg per day was administered to a limited number of patients; therefore, these results cannot be directly compared to immediate-release topiramate experience.

The safety data presented below are from 249 patients with partial epilepsy on concomitant AEDs who participated in the topiramate extended-release capsules study [see *Clinical Studies (14.4)*].

Table 10 displays the incidence of adverse reactions that occurred in $\geq 2\%$ of patients

and numerically greater than placebo.

Table 10: Incidence ($\geq 2\%$) of Adverse Reactions in Placebo-Controlled Adjunctive Therapy Clinical Trial in Patients With Partial-Onset Seizures

Body System/ Adverse Reaction	Placebo (N=125)	Topiramate Extended- Release Capsules (200 mg) (N=124)
General Disorders		
Fatigue	5	6
Asthenia	1	2
Irritability	1	2
Nervous System Disorders		
Somnolence	2	12
Dizziness	6	7
Paresthesia	2	7
Aphasia	0	2
Dysarthria	1	2
Memory impairment	1	2
Psychiatric Disorder		
Psychomotor retardation	0	2
Cardiovascular Disorders, General		
Hypertension	1	3
Metabolic and Nutritional Disorders		
Weight decrease	0	7
Decreased appetite	2	4

In the controlled clinical study using topiramate extended-release capsules, 8.9% of patients who received topiramate extended-release capsules and 4% who received placebo discontinued as a result of adverse reactions.

6.3 Postmarketing Experience

The following adverse reactions have been identified during post-approval use of immediate-release topiramate. Because these reactions are reported voluntarily from a population of uncertain size, it is not always possible to reliably estimate their frequency or establish a causal relationship to drug exposure.

Body as a Whole-General Disorders: oligohydrosis and hyperthermia [see *Warnings and Precautions* (5.3)], hyperammonemia, hyperammonemic encephalopathy [see *Warnings and Precautions* (5.12)], hypothermia with concomitant valproic acid [see *Warnings and Precautions* (5.14)]

Gastrointestinal System Disorders: hepatic failure (including fatalities), hepatitis, pancreatitis

Skin and Appendage Disorders: bullous skin reactions (including erythema multiforme, Stevens-Johnson syndrome, toxic epidermal necrolysis) [see *Warnings and Precautions* (5.11)], pemphigus

Urinary System Disorders: kidney stones, nephrocalcinosis [see *Warnings and Precautions* (5.4, 5.13)]

Vision Disorders: acute myopia, secondary angle closure glaucoma [see *Warnings and Precautions* (5.1)], maculopathy

Hematological Disorders: decrease of the International Normalized Ratio (INR) or prothrombin time when given concomitantly with Vitamin K antagonist anticoagulant medications such as warfarin.

7 DRUG INTERACTIONS

7.1 Antiepileptic Drugs

Concomitant administration of phenytoin or carbamazepine with topiramate resulted in a clinically significant decrease in plasma concentrations of topiramate when compared to topiramate given alone. A dosage adjustment may be needed [see *Clinical Pharmacology* (12.3)].

Concomitant administration of valproic acid and topiramate has been associated with hypothermia and hyperammonemia with and without encephalopathy. Examine blood ammonia levels in patients in whom the onset of hypothermia has been reported [see *Warnings and Precautions* (5.12, 5.14), *Clinical Pharmacology* (12.3)].

7.2 Other Carbonic Anhydrase Inhibitors

Concomitant use of topiramate, a carbonic anhydrase inhibitor, with any other carbonic anhydrase inhibitor (e.g., zonisamide or acetazolamide) may increase the severity of

metabolic acidosis and may also increase the risk of kidney stone formation. Patients should be monitored for the appearance or worsening of metabolic acidosis when topiramate extended-release capsules are given concomitantly with another carbonic anhydrase inhibitor [see *Clinical Pharmacology* (12.3)].

7.3 CNS Depressants

Concomitant administration of topiramate and alcohol or other CNS depressant drugs has not been evaluated in clinical studies. Because of the potential of topiramate to cause CNS depression, as well as other cognitive and/or neuropsychiatric adverse reactions, topiramate extended-release capsules should be used with extreme caution if used in combination with alcohol and other CNS depressants.

7.4 Oral Contraceptives

The possibility of decreased contraceptive efficacy and increased breakthrough bleeding may occur in patients taking combination oral contraceptive products with topiramate extended-release capsules. Patients taking estrogen-containing contraceptives should be asked to report any change in their bleeding patterns. Contraceptive efficacy can be decreased even in the absence of breakthrough bleeding [see *Clinical Pharmacology* (12.3)].

7.5 Hydrochlorothiazide (HCTZ)

Topiramate C_{max} and AUC increased when HCTZ was added to immediate-release topiramate. The clinical significance of this change is unknown. The addition of HCTZ to topiramate extended-release capsules may require a decrease in the topiramate extended-release capsules dose [see *Clinical Pharmacology* (12.3)].

7.6 Pioglitazone

A decrease in the exposure of pioglitazone and its active metabolites were noted with the concurrent use of pioglitazone and immediate-release topiramate in a clinical trial. The clinical relevance of these observations is unknown; however, when topiramate extended-release capsules are added to pioglitazone therapy or pioglitazone is added to topiramate extended-release capsules therapy, careful attention should be given to the routine monitoring of patients for adequate control of their diabetic disease state [see *Clinical Pharmacology* (12.3)].

7.7 Lithium

An increase in systemic exposure of lithium following topiramate doses of up to 600 mg/day can occur. Lithium levels should be monitored when co-administered with high-dose topiramate extended-release capsules [see *Clinical Pharmacology* (12.3)].

7.8 Amitriptyline

Some patients may experience a large increase in amitriptyline concentration in the presence of topiramate extended-release capsules and any adjustments in amitriptyline dose should be made according to the patient's clinical response and not on the basis of plasma levels [see *Clinical Pharmacology* (12.3)].

8 USE IN SPECIFIC POPULATIONS

8.1 Pregnancy

Pregnancy Exposure Registry

There is a pregnancy exposure registry that monitors pregnancy outcomes in women exposed to antiepileptic drugs (AEDs), such as topiramate extended-release capsules, during pregnancy. Patients should be encouraged to enroll in the North American Antiepileptic Drug (NAAED) Pregnancy Registry if they become pregnant. This registry is collecting information about the safety of antiepileptic drugs during pregnancy. To enroll, patients can call the toll-free number 1-888-233-2334. Information about the North American Drug Pregnancy Registry can be found at <http://www.aedpregnancyregistry.org/>.

Risk Summary

Topiramate can cause fetal harm when administered to a pregnant woman. Data from pregnancy registries indicate that infants exposed to topiramate *in utero* have increased risk of major congenital malformations, including but not limited to cleft lip and/or cleft palate (oral clefts), and of being small for gestational age (SGA) [see *Human Data*]. SGA has been observed at all doses and appears to be dose-dependent. The prevalence of SGA is greater in infants of women who received higher doses of topiramate during pregnancy. In addition, the prevalence of SGA in infants of women who continued topiramate use until later in pregnancy is higher compared to the prevalence in infants of women who stopped topiramate use before the third trimester.

In multiple animal species, topiramate demonstrated developmental toxicity, including increased incidences of fetal malformations, in the absence of maternal toxicity at clinically relevant doses [see *Animal Data*].

All pregnancies have a background risk of birth defects, loss, or other adverse outcomes. The estimated background risk of major birth defects and miscarriage for the indicated population is unknown. In the U.S. general population, the estimated background risks of major birth defects and miscarriage in clinically recognized pregnancies are 2% to 4% and 15% to 20%, respectively.

Clinical Considerations

Fetal/Neonatal Adverse Reactions

Consider the benefits and risks of topiramate when prescribing this drug to women of childbearing potential, particularly when topiramate is considered for a condition not usually associated with permanent injury or death. Because of the risk of oral clefts to the fetus, which occur in the first trimester of pregnancy before many women know they are pregnant, all women of childbearing potential should be informed of the potential risk to the fetus from exposure to topiramate. Women who are planning a pregnancy should be counseled regarding the relative risks and benefits of topiramate use during pregnancy, and alternative therapeutic options should be considered for these patients.

Labor or Delivery

Although the effect of topiramate on labor and delivery in humans has not been established, the development of topiramate-induced metabolic acidosis in the mother

and/or in the fetus might affect the fetus' ability to tolerate labor.

Topiramate treatment can cause metabolic acidosis [see *Warnings and Precautions (5.4)*]. The effect of topiramate-induced metabolic acidosis has not been studied in pregnancy; however, metabolic acidosis in pregnancy (due to other causes) can cause decreased fetal growth, decreased fetal oxygenation, and fetal death, and may affect the fetus' ability to tolerate labor. Pregnant patients should be monitored for metabolic acidosis and treated as in the nonpregnant state [see *Warnings and Precautions (5.4)*]. Newborns of mothers treated with topiramate should be monitored for metabolic acidosis because of transfer of topiramate to the fetus and possible occurrence of transient metabolic acidosis following birth.

Based on limited information, topiramate has also been associated with pre-term labor and premature delivery.

Data

Human Data

Data from pregnancy registries indicate an increased risk of major congenital malformations, including but not limited to oral clefts in infants exposed to topiramate during the first trimester of pregnancy. Other than oral clefts, no specific pattern of major congenital malformations or grouping of major congenital malformation types were observed. In the NAAED pregnancy registry, when topiramate-exposed infants with only oral clefts were excluded, the prevalence of major congenital malformations (4.1%) was higher than that in infants exposed to a reference AED (1.8%) or in infants with mothers without epilepsy and without exposure to AEDs (1.1%). The prevalence of oral clefts among topiramate-exposed infants (1.4%) was higher than the prevalence in infants exposed to a reference AED (0.3%) or the prevalence in infants with mothers without epilepsy and without exposure to AEDs (0.11%). It was also higher than the background prevalence in the United States (0.17%) as estimated by the Centers for Disease Control and Prevention (CDC). The relative risk of oral clefts in topiramate-exposed pregnancies in the NAAED Pregnancy Registry was 12.5 (95% Confidence Interval=[CI] 5.9 to 26.37) as compared to the risk in a background population of untreated women. The UK Epilepsy and Pregnancy Register reported a prevalence of oral clefts among infants exposed to topiramate monotherapy (3.2%) that was 16 times higher than the background rate in the UK (0.2%).

Data from the NAAED pregnancy registry and a population-based birth registry cohort indicate that exposure to topiramate *in utero* is associated with an increased risk of SGA newborns (birth weight <10th percentile). In the NAAED pregnancy registry, 19.7% of topiramate-exposed newborns were SGA compared to 7.9% of newborns exposed to a reference AED, and 5.4% of newborns of mothers without epilepsy and without AED exposure. In the Medical Birth Registry of Norway (MBRN), a population-based pregnancy registry, 25% of newborns in the topiramate monotherapy exposure group were SGA compared to 9% in the comparison group who were unexposed to AEDs. The long-term consequences of the SGA findings are not known.

Animal Data

When topiramate (0, 20, 100, or 500 mg/kg/day) was administered orally to pregnant mice during the period of organogenesis, the incidence of fetal malformations (primarily craniofacial defects) were increased at all doses. Fetal body weights and skeletal ossification were reduced at the highest dose tested in conjunction with decreased

maternal body weight gain. A no-effect dose for embryofetal developmental toxicity in mice was not identified. The lowest dose tested, which was associated with an increased incidence of malformations, is less than the maximum recommended human dose (MRHD) for epilepsy (400 mg/day) or migraine (100 mg/day) on a body surface area (mg/m^2) basis.

In pregnant rats administered topiramate (0, 20, 100, and 500 mg/kg/day or 0, 0.2, 2.5, 30, and 400 mg/kg/day) orally during the period of organogenesis, the frequency of limb malformations (ectrodactyly, micromelia, and amelia) was increased in fetuses at 400 and 500 mg/kg/day. Embryotoxicity (reduced fetal body weights, increased incidences of structural variations) was observed at doses as low as 20 mg/kg/day. Clinical signs of maternal toxicity were seen at 400 mg/kg/day and above, and maternal body weight gain was reduced at doses of 100 mg/kg/day or greater. The no-effect dose (2.5 mg/kg/day) for embryofetal developmental toxicity in rats is less than the MRHD for epilepsy or migraine on a mg/m^2 basis.

In pregnant rabbits administered topiramate (0, 20, 60, and 180 mg/kg/day or 0, 10, 35, and 120 mg/kg/day) orally during organogenesis, embryofetal mortality was increased at 35 mg/kg/day and an increased incidence of fetal malformations (primarily rib and vertebral malformations) was observed at 120 mg/kg/day. Evidence of maternal toxicity (decreased body weight gain, clinical signs, and/or mortality) was seen at 35 mg/kg/day and above. The no-effect dose (20 mg/kg/day) for embryofetal developmental toxicity in rabbits is equivalent to the MRHD for epilepsy and approximately 4 times the MRHD for migraine on a mg/m^2 basis.

When topiramate (0, 0.2, 4, 20, and 100 mg/kg/day or 0, 2, 20, and 200 mg/kg/day) was administered orally to female rats during the latter part of gestation and throughout lactation, offspring exhibited decreased viability and delayed physical development at 200 mg/kg/day and reductions in pre- and/or postweaning body weight gain at 2 mg/kg/day and above. Maternal toxicity (decreased body weight gain, clinical signs) was evident at 100 mg/kg/day or greater. In a rat embryofetal development study which included postnatal assessment of offspring, oral administration of topiramate (0, 0.2, 2.5, 30, and 400 mg/kg/day) to pregnant animals during the period of organogenesis resulted in delayed physical development in offspring at 400 mg/kg/day and persistent reductions in body weight gain in offspring at 30 mg/kg/day and higher. The no-effect dose (0.2 mg/kg/day) for pre- and postnatal developmental toxicity in rats is less than the MRHD for epilepsy or migraine on a mg/m^2 basis.

8.2 Lactation

Risk Summary

Topiramate is excreted in human milk [*see Data*]. The effects of topiramate on milk production are unknown. Diarrhea and somnolence have been reported in breastfed infants whose mothers receive topiramate treatment.

The developmental and health benefits of breastfeeding should be considered along with the mother's clinical need for topiramate extended-release capsules and any potential adverse effects on the breastfed infant from topiramate extended-release capsules or from the underlying maternal condition.

Data

Human Data

Limited data from 5 women with epilepsy treated with topiramate during lactation showed drug levels in milk similar to those in maternal plasma.

8.3 Females and Males of Reproductive Potential

Contraception

Women of childbearing potential who are not planning a pregnancy should use effective contraception because of the risk of major congenital malformations, including oral clefts, and the risk of infants being SGA [see *Drug Interactions (7.4)* and *Use in Specific Populations (8.1)*].

8.4 Pediatric Use

Adjunctive Treatment for Epilepsy

Pediatric Patients 2 Years of Age and Older

The safety and effectiveness of topiramate extended-release capsules as adjunctive therapy for the treatment of partial-onset seizures, primary generalized tonic-clonic seizures, or seizures associated with Lennox-Gastaut syndrome have been established in pediatric patients 2 years of age and older and is based on controlled trials with immediate-release topiramate [see *Adverse Reactions (6.1)* and *Clinical Studies (14.3, 14.4)*].

The adverse reactions (both common and serious) in pediatric patients are similar to those seen in adults [see *Warnings and Precautions (5)* and *Adverse Reactions (6)*].

These include, but are not limited to:

- oligohydrosis and hyperthermia [see *Warnings and Precautions (5.3)*]
- dose-related increased incidence of metabolic acidosis [see *Warnings and Precautions (5.4)*]
- dose-related increased incidence of hyperammonemia [see *Warnings and Precautions (5.12)*]

Pediatric Patients Below the Age of 2 Years

The following pediatric use information is based on studies conducted with immediate-release topiramate.

Safety and effectiveness in patients below the age of 2 years have not been established for the adjunctive therapy treatment of partial-onset seizures, primary generalized tonic-clonic seizures, or seizures associated with Lennox-Gastaut syndrome. In a single randomized, double-blind, placebo-controlled investigational trial, the efficacy, safety, and tolerability of immediate-release topiramate oral liquid and sprinkle formulations as an adjunct to concurrent antiepileptic drug therapy in pediatric patients 1 to 24 months of age with refractory partial-onset seizures were assessed. After 20 days of double-blind treatment, immediate-release topiramate (at fixed doses of 5, 15, and 25 mg/kg/day) did not demonstrate efficacy compared with placebo in controlling seizures.

In general, the adverse reaction profile for immediate-release topiramate in this population was similar to that of older pediatric patients, although results from the above controlled study and an open-label, long-term extension study in these pediatric patients 1 to 24 months old suggested some adverse reactions/toxicities not previously

observed in older pediatric patients and adults; i.e., growth/length retardation, certain clinical laboratory abnormalities, and other adverse reactions/toxicities that occurred with a greater frequency and/or greater severity than had been recognized previously from studies in older pediatric patients or adults for various indications.

These very young pediatric patients appeared to experience an increased risk for infections (any topiramate dose 12%, placebo 0%) and of respiratory disorders (any topiramate dose 40%, placebo 16%). The following adverse reactions were observed in at least 3% of patients on immediate-release topiramate and were 3% to 7% more frequent than in patients on placebo: viral infection, bronchitis, pharyngitis, rhinitis, otitis media, upper respiratory infection, cough, and bronchospasm. A generally similar profile was observed in older pediatric patients [see *Adverse Reactions (6.1)*].

Immediate-release topiramate resulted in an increased incidence of patients with increased creatinine (any topiramate dose 5%, placebo 0%), BUN (any topiramate dose 3%, placebo 0%), and protein (any topiramate dose 34%, placebo 6%), and an increased incidence of decreased potassium (any topiramate dose 7%, placebo 0%). This increased frequency of abnormal values was not dose-related. Creatinine was the only analyte showing a noteworthy increased incidence (topiramate 25 mg/kg/day 5%, placebo 0%) of a markedly abnormal increase [see *Adverse Reactions (6.1)*]. The significance of these findings is uncertain.

Immediate-release topiramate treatment also produced a dose-related increase in the percentage of patients who had a shift from normal at baseline to high/increased (above the normal reference range) in total eosinophil count at the end of treatment. The incidence of these abnormal shifts was 6% for placebo, 10% for 5 mg/kg/day, 9% for 15 mg/kg/day, 14% for 25 mg/kg/day, and 11% for any topiramate dose [see *Adverse Reactions (6.1)*]. There was a mean dose-related increase in alkaline phosphatase. The significance of these findings is uncertain.

Topiramate produced a dose-related increased incidence of hyperammonemia [see *Warnings and Precautions (5.12)*].

Treatment with immediate-release topiramate for up to 1 year was associated with reductions in Z SCORES for length, weight, and head circumference [see *Warnings and Precautions (5.4)*, *Adverse Reactions (6.1)*].

In open-label, uncontrolled experience, increasing impairment of adaptive behavior was documented in behavioral testing over time in this population. There was a suggestion that this effect was dose-related. However, because of the absence of an appropriate control group, it is not known if this decrement in function was treatment related or reflects the patient's underlying disease (e.g., patients who received higher doses may have more severe underlying disease) [see *Warnings and Precautions (5.6)*].

In this open-label, uncontrolled study, the mortality was 37 deaths/1,000 patient years. It is not possible to know whether this mortality rate is related to immediate-release topiramate treatment, because the background mortality rate for a similar, significantly refractory, young pediatric population (1 to 24 months) with partial epilepsy is not known.

Monotherapy Treatment for Epilepsy

Pediatric Patients 2 Years of Age and Older

The safety and effectiveness of topiramate extended-release capsules as monotherapy

for the treatment of partial-onset seizures or primary generalized tonic-clonic seizures have been established in pediatric patients aged 2 years and older [see *Adverse Reactions (6.1)*, *Clinical Studies (14.1)*]. A one-year, active-controlled, open-label study with blinded assessments of bone mineral density (BMD) and growth in pediatric patients 4 to 15 years of age, including 63 patients with recent or new onset of epilepsy, was conducted to assess effects of immediate-release topiramate (N=28, 6 to 15 years of age) versus levetiracetam (N=35, 4 to 15 years of age) monotherapy on bone mineralization and on height and weight, which reflect growth. Effects on bone mineralization were evaluated via dual-energy X-ray absorptiometry and blood markers. Table 11 summarizes effects of immediate-release topiramate at 12 months for key safety outcomes including BMD, height, height velocity, and weight. All Least Square Mean values for immediate-release topiramate and the comparator were positive. Therefore, the Least Square Mean treatment differences shown reflect a topiramate induced attenuation of the key safety outcomes. Statistically significant effects were observed for decreases in BMD (and bone mineral content) in lumbar spine and total body less head and in weight. Subgroup analyses according to age demonstrated similar negative effects for all key safety outcomes (i.e., BMD, height, weight).

Table 11: Summary of Immediate-Release Topiramate Treatment Difference Results at 12 Months for Key Safety Outcomes

Safety Parameter	Treatment Difference in Least Square Means (95 % Confidence Interval)
Annual Change in BMD Lumbar Spine (g/cm²)	-0.036(-0.058, -0.014)
Annual Change in BMD TBLH* (g/cm²)	-0.026(-0.039, -0.012)
Annual Change in Height (cm) (4 to 9 years, Primary Analysis Population for Height)**	-0.84(-2.67, 0.99)
Annual Change in Height (cm) (4 to 15 years)	-0.75(-2.21, 0.71)
Annual Change in Height (cm) (10 to 15 years)	-1.01(-3.64, 1.61)
Height Velocity (cm/year) (4 to 9 years)	1(-2.76, 0.76)
Height Velocity (cm/year) (4 to 15 years)	-0.98(-2.33, 0.37)
Height Velocity (cm/year) (10 to 15 years)	-0.96(-3.24, 1.32)
Annual Change in Weight (kg)	-2.05(-3.66, -0.45)

*** TBLH = total body less head**

**** Whereas no patients were randomized to 2 to 5 year of age subgroup for immediate-release topiramate, 5 patients (4 to 5 years) were randomized to the active control group.**

Metabolic acidosis (serum bicarbonate < 20 mEq/L) was observed in all immediate-release topiramate-treated patients at some time in the study [see *Warnings and Precautions (5.4)*]. Over the whole study, 76% more immediate-release topiramate-treated patients experienced persistent metabolic acidosis (i.e., 2 consecutive visits with or final serum bicarbonate < 20 mEq/L) compared to levetiracetam-treated patients. Over the whole study, 35% more immediate-release

topiramate-treated patients experienced a markedly abnormally low serum bicarbonate (i.e., absolute value < 17 mEq/L and ≥ 5 mEq/L decrease from pre-treatment), indicating the frequency of more severe metabolic acidosis, compared to levetiracetam-treated patients. The decrease in BMD at 12 months was correlated with decreased serum bicarbonate, suggesting that metabolic acidosis was at least a partial factor contributing to this adverse effect on BMD.

Immediate-release topiramate-treated patients exhibited an increased risk for developing an increased serum creatinine and an increased serum glucose above the normal reference range compared to control patients.

Pediatric Patients Below the Age of 2 Years

Safety and effectiveness in patients below the age of 2 years have not been established for the monotherapy treatment of epilepsy.

Preventive Treatment of Migraine

Pediatric Patients 12 to 17 Years of Age

Safety and effectiveness of topiramate for the preventive treatment of migraine was studied in 5 double-blind, randomized, placebo-controlled, parallel-group trials in a total of 219 pediatric patients, at doses of 50 to 200 mg/day, or 2 to 3 mg/kg/day. These comprised a fixed dose study in 103 pediatric patients 12 to 17 years of age [see *Clinical Studies (14.5)*], a flexible dose (2 to 3 mg/kg/day), placebo-controlled study in 157 pediatric patients 6 to 16 years of age (including 67 pediatric patients 12 to 16 years of age), and a total of 49 pediatric patients 12 to 17 years of age in 3 studies for the preventive treatment of migraine primarily in adults. Open-label extension phases of 3 studies enabled evaluation of long-term safety for up to 6 months after the end of the double-blind phase.

Efficacy of topiramate for the preventive treatment of migraine in pediatric patients 12 to 17 years of age is demonstrated for a 100 mg daily dose in Study 13 [see *Clinical Studies (14.5)*]. Efficacy of topiramate (2 to 3 mg/kg/day) for the preventive treatment of migraine was not demonstrated in a placebo-controlled trial of 157 pediatric patients (6 to 16 years of age) that included treatment of 67 pediatric patients (12 to 16 years of age) for 20 weeks.

In the pediatric trials (12 to 17 years of age) in which patients were randomized to placebo or a fixed daily dose of immediate-release topiramate, the most common adverse reactions with immediate-release topiramate that were seen at an incidence higher ($\geq 5\%$) than in the placebo group were: paresthesia, upper respiratory tract infection, anorexia, and abdominal pain [see *Adverse Reactions (6.1)*].

The most common cognitive adverse reaction in pooled double-blind studies in pediatric patients 12 to 17 years of age was difficulty with concentration/attention [see *Warnings and Precautions (5.6)*].

Markedly abnormally low serum bicarbonate values indicative of metabolic acidosis were reported in topiramate-treated pediatric migraine patients [see *Warnings and Precautions (5.4)*].

In topiramate-treated pediatric patients (12 to 17 years of age) compared to placebo-treated patients, abnormally increased results were more frequent for creatinine, BUN, uric acid, chloride, ammonia, total protein, and platelets. Abnormally decreased results

were observed with topiramate vs placebo treatment for phosphorus and bicarbonate [see *Warnings and Precautions (5.4) and Adverse Reactions (6.1)*].

Notable changes (increases and decreases) from baseline in systolic blood pressure, diastolic blood pressure, and pulse were observed occurred more commonly in pediatric patients treated with topiramate compared to pediatric patients treated with placebo [see *Clinical Pharmacology (12.2)*].

Pediatric Patients Below the Age of 12 Years

Safety and effectiveness in pediatric patients below the age of 12 years have not been established for the preventive treatment of migraine.

In a double-blind study in 90 pediatric patients 6 to 11 years of age (including 59 topiramate-treated and 31 placebo patients), the adverse reaction profile was generally similar to that seen in pooled double-blind studies of pediatric patients 12 to 17 years of age. The most common adverse reactions that occurred in immediate-release topiramate-treated pediatric patients 6 to 11 years of age, and at least twice as frequently than placebo, were gastroenteritis (12% topiramate, 6% placebo), sinusitis (10% topiramate, 3% placebo), weight loss (8% topiramate, 3% placebo) and paresthesia (7% topiramate, 0% placebo). Difficulty with concentration/attention occurred in 3 topiramate-treated patients (5%) and 0 placebo-treated patients.

The risk for cognitive adverse reaction was greater in younger patients (6 to 11 years of age) than in older patients (12 to 17 years of age) [see *Warnings and Precautions (5.6)*].

Juvenile Animal Studies

When topiramate (0, 30, 90 or 300 mg/kg/day) was administered orally to rats during the juvenile period of development (postnatal days 12 to 50), bone growth plate thickness was reduced in males at the highest dose, which is approximately 5 to 8 times the maximum recommended pediatric dose (9 mg/kg/day) on a body surface area (mg/m²) basis.

8.5 Geriatric Use

Clinical studies of immediate-release topiramate did not include sufficient numbers of subjects age 65 and over to determine whether they respond differently than younger subjects. Dosage adjustment may be necessary for elderly with creatinine clearance less than 70 mL/min/1.73 m². Estimate GFR should be measured prior to dosing [see *Dosage and Administration (2.3) and Clinical Pharmacology (12.3)*].

8.6 Renal Impairment

The clearance of topiramate is reduced in patients with moderate (creatinine clearance 30 to 69 mL/min/1.73 m²) and severe (creatinine clearance less than 30 mL/min/1.73 m²) renal impairment. A dosage adjustment is recommended in patients with moderate or severe renal impairment [see *Dosage and Administration (2.4) and Clinical Pharmacology (12.3)*].

8.7 Patients Undergoing Hemodialysis

Topiramate is cleared by hemodialysis at a rate that is 4 to 6 times greater than in a normal individual. A dosage adjustment may be required [see *Dosage and Administration (2.5) and Clinical Pharmacology (12.3)*].

10 OVERDOSAGE

Overdoses of topiramate have been reported. Signs and symptoms included convulsions, drowsiness, speech disturbance, blurred vision, diplopia, impaired mentation, lethargy, abnormal coordination, stupor, hypotension, abdominal pain, agitation, dizziness and depression. The clinical consequences were not severe in most cases, but deaths have been reported after overdoses involving topiramate.

Topiramate overdose has resulted in severe metabolic acidosis [see *Warnings and Precautions* (5.4)].

A patient who ingested a dose of immediate-release topiramate between 96 g and 110 g was admitted to a hospital with a coma lasting 20 to 24 hours followed by full recovery after 3 to 4 days.

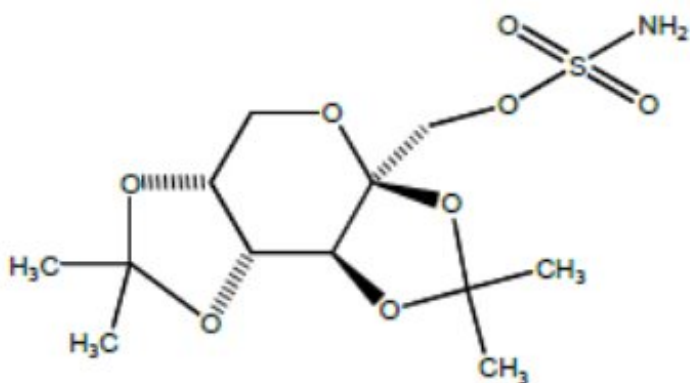
Similar signs, symptoms, and clinical consequences are expected to occur with overdosage of topiramate extended-release capsules. Therefore, in the event of topiramate extended-release capsules overdose, topiramate extended-release capsules should be discontinued and general supportive treatment given until clinical toxicity has been diminished or resolved.

Hemodialysis is an effective means of removing topiramate from the body.

11 DESCRIPTION

Topiramate, USP is a sulfamate-substituted monosaccharide. Topiramate Extended-Release Capsules are available as 25 mg, 50 mg, 100 mg, 150 mg, and 200 mg capsules for oral administration as whole capsules or opened and sprinkled onto a spoonful of soft food.

Topiramate, USP is a white to off-white powder. Topiramate, USP is freely soluble in dichloromethane. Topiramate, USP has the molecular formula $C_{12}H_{21}NO_8S$ and a molecular weight of 339.36 g/mol. Topiramate, USP is designated chemically as 2,3:4,5-Di-O-isopropylidene- β -D-fructopyranose sulfamate and has the following structural formula:



Topiramate Extended-Release Capsules contain pellets of topiramate, USP in a capsule.

The inactive ingredients are D&C red No.30, ethylcellulose, FD&C red No.40, hypromellose, microcrystalline cellulose, polyethylene glycol and talc.

The capsule shell for Topiramate Extended-Release Capsules, 25 mg contains black iron oxide, hypromellose, red iron oxide and titanium dioxide.

The capsule shell for Topiramate Extended-Release Capsules, 50 mg contains black iron oxide, hypromellose, red iron oxide, titanium dioxide, and yellow iron oxide.

The capsule shell for Topiramate Extended-Release Capsules, 100 mg contains black iron oxide, hypromellose, red iron oxide and titanium dioxide.

The capsule shell for Topiramate Extended-Release Capsules, 150 mg contains black iron oxide, hypromellose, and titanium dioxide.

The capsule shell for Topiramate Extended-Release Capsules, 200 mg contains black iron oxide, hypromellose, red iron oxide, titanium dioxide, and yellow iron oxide.

The imprinting ink has the following components: black iron oxide, potassium hydroxide, propylene glycol, shellac and strong ammonia solution.

12 CLINICAL PHARMACOLOGY

12.1 Mechanism of Action

The precise mechanisms by which topiramate exerts its anticonvulsant and preventive migraine effects are unknown; however, preclinical studies have revealed four properties that may contribute to topiramate's efficacy for epilepsy and the preventive treatment of migraine. Electrophysiological and biochemical evidence suggests that topiramate, at pharmacologically relevant concentrations, blocks voltage-dependent sodium channels, augments the activity of the neurotransmitter gamma-aminobutyrate at some subtypes of the GABA-A receptor, antagonizes the AMPA/kainate subtype of the glutamate receptor, and inhibits the carbonic anhydrase enzyme, particularly isozymes II and IV.

12.2 Pharmacodynamics

Topiramate has anticonvulsant activity in rat and mouse maximal electroshock seizure (MES) tests. Topiramate is only weakly effective in blocking clonic seizures induced by the GABA-A receptor antagonist, pentylentetrazole. Topiramate is also effective in rodent models of epilepsy, which include tonic and absence-like seizures in the spontaneous epileptic rat (SER) and tonic and clonic seizures induced in rats by kindling of the amygdala or by global ischemia.

Changes (increases and decreases) from baseline in vital signs (systolic blood pressure-SBP, diastolic blood pressure-DBP, pulse) occurred more frequently in pediatric patients (6 to 17 years) treated with various daily doses of topiramate (50 mg, 100 mg, 200 mg, 2 to 3 mg/kg) than in patients treated with placebo in controlled trials for the preventive treatment of migraine. The most notable changes were SBP < 90 mm Hg, DBP < 50 mm Hg, SBP or DBP increases or decreases ≥ 20 mm Hg, and pulse increases or decreases ≥ 30 beats per minute. These changes were often dose-related and were most frequently associated with the greatest treatment difference at the 200 mg dose level. Systematic collection of orthostatic vital signs has not been conducted. The clinical significance of these various changes in vital signs has not been clearly established.

12.3 Pharmacokinetics

Absorption and Distribution

The pharmacokinetics of topiramate extended-release capsules are linear with dose proportional increases in plasma concentration when administered as a single oral dose over the range of 50 mg to 1,400 mg. At 25 mg, the pharmacokinetics of topiramate extended-release capsules are nonlinear, possibly due to the binding of topiramate to carbonic anhydrase in red blood cells.

Topiramate extended-release capsules sprinkled on a spoonful of soft food is bioequivalent to the intact capsule formulation.

Following a single 200 mg oral dose of topiramate extended-release, peak plasma concentrations (T_{max}) occurred approximately 20 hours after dosing. Steady-state was reached in about 5 days following daily dosing of topiramate extended-release in subjects with normal renal function, with a T_{max} of approximately 6 hours.

At steady-state, the plasma exposure (AUC_{0-24hr} , C_{max} , and C_{min}) of topiramate from topiramate extended-release administered once daily and the immediate-release topiramate tablets administered twice-daily were shown to be bioequivalent. Fluctuation of topiramate plasma concentrations at steady-state for topiramate extended-release administered once daily was approximately 40% in healthy subjects, compared to approximately 53% for immediate-release topiramate [see *Clinical Pharmacology* (12.6)].

Compared to the fasted state, high-fat meal had no effect on bioavailability (AUC and C_{max}) but delayed the T_{max} by approximately 4 hours following a single dose of topiramate extended-release. Topiramate extended-release can be taken without regard to meals.

Topiramate is 15% to 41% bound to human plasma proteins over the blood concentration range of 0.5 mcg/mL to 250 mcg/mL. The fraction bound decreased as blood concentration increased.

Carbamazepine and phenytoin do not alter the binding of immediate-release topiramate. Sodium valproate, at 500 mcg/mL (a concentration 5 to 10 times higher than considered therapeutic for valproate) decreased the protein binding of immediate-release topiramate from 23% to 13%. Immediate-release topiramate does not influence the binding of sodium valproate.

Metabolism and Excretion

Topiramate is not extensively metabolized and is primarily eliminated unchanged in the urine (approximately 70% of an administered dose). Six metabolites have been identified in humans, none of which constitutes more than 5% of an administered dose. The metabolites are formed via hydroxylation, hydrolysis, and glucuronidation. There is evidence of renal tubular reabsorption of topiramate. In rats, given probenecid to inhibit tubular reabsorption, along with topiramate, a significant increase in renal clearance of topiramate was observed. This interaction has not been evaluated in humans. Overall, oral plasma clearance (CL/F) is approximately 20 mL/min to 30 mL/min in adults following oral administration. The mean effective half-life of topiramate extended-release capsules are approximately 56 hours. Steady-state is reached in about 5 days after topiramate extended-release capsules dosing in subjects with normal renal function.

Specific Populations

Renal Impairment

The clearance of topiramate was reduced by 42% in subjects with moderate renal impairment (creatinine clearance 30 to 69 mL/min/1.73 m²) and by 54% in subjects with severe renal impairment (creatinine clearance less than 30 mL/min/1.73 m²) compared to subjects with normal renal function (creatinine clearance greater than 70 mL/min/1.73 m²) [see *Dosage and Administration* (2.4, 2.6)].

Hemodialysis

Topiramate is cleared by hemodialysis. Using a high-efficiency, counter flow, single pass-dialysate hemodialysis procedure, topiramate dialysis clearance was 120 mL/min with blood flow through the dialyzer at 400 mL/min. This high clearance (compared to 20 mL/min to 30 mL/min total oral clearance in healthy adults) will remove a clinically significant amount of topiramate from the patient over the hemodialysis treatment period [see *Dosage and Administration* (2.5) and *Use in Specific Populations* (8.7)].

Hepatic Impairment

Plasma clearance of topiramate decreased a mean of 26% in patients with moderate to severe hepatic impairment.

Age, Gender and Race

The pharmacokinetics of topiramate in elderly subjects (65 to 85 years of age, N=16) were evaluated in a controlled clinical study. The elderly subject population had reduced renal function (creatinine clearance [-20%]) compared to young adults. Following a single oral 100 mg dose, maximum plasma concentration for elderly and young adults was achieved at approximately 1 to 2 hours. Reflecting the primary renal elimination of topiramate, topiramate plasma and renal clearance were reduced 21% and 19%, respectively, in elderly subjects, compared to young adults. Similarly, topiramate half-life was longer (13%) in the elderly. Reduced topiramate clearance resulted in slightly higher maximum plasma concentration (23%) and AUC (25%) in elderly subjects than observed in young adults. Topiramate clearance is decreased in the elderly only to the extent that renal function is reduced [see *Dosage and Administration* (2.3), *Use in Specific Populations* (8.5)].

Clearance of topiramate in adults was not affected by gender or race.

Pediatric Pharmacokinetics

Pharmacokinetics of immediate-release topiramate were evaluated in patients age 2 years to less than 16 years. Patients received either no or a combination of other antiepileptic drugs. A population pharmacokinetic model was developed on the basis of pharmacokinetic data from relevant topiramate clinical studies. This dataset contained data from 1,217 subjects including 258 pediatric patients age 2 years to less than 16 years (95 pediatric patients less than 10 years of age).

Pediatric patients on adjunctive treatment exhibited a higher oral clearance (L/h) of topiramate compared to patients on monotherapy, presumably because of increased clearance from concomitant enzyme-inducing antiepileptic drugs. In comparison, topiramate clearance per kg is greater in pediatric patients than in adults and in young pediatric patients (down to 2 years) than in older pediatric patients. Consequently, the plasma drug concentration for the same mg/kg/day dose would be lower in pediatric

patients compared to adults and also in younger pediatric patients compared to older pediatric patients. Clearance was independent of dose.

As in adults, hepatic enzyme-inducing antiepileptic drugs decrease the steady state plasma concentrations of topiramate.

Drug Interactions

In vitro studies indicate that topiramate does not inhibit CYP1A2, CYP2A6, CYP2B6, CYP2C9, CYP2D6, CYP2E1, or CYP3A4/5 isozymes. *In vitro* studies indicate that topiramate is a mild inhibitor of CYP2C19 and a mild inducer of CYP3A4.

Antiepileptic Drugs

Potential interactions between immediate-release topiramate and standard AEDs were assessed in controlled clinical pharmacokinetic studies in patients with epilepsy. The effects of these interactions on mean plasma AUCs are summarized in Table 12. Interaction of topiramate extended-release capsules and standard AEDs is not expected to differ from the experience with immediate-release topiramate products.

In Table 12, the second column (AED concentration) describes what happens to the concentration of the co-administered AED listed in the first column when topiramate was added. The third column (topiramate concentration) describes how the co-administration of a drug listed in the first column modifies the concentration of topiramate when compared to topiramate given alone.

Table 12: Summary of AED Interactions with Topiramate

AED Co-administered	AED Concentration	Topiramate Concentration
Phenytoin	NC or 25% increase ^a	48% decrease
Carbamazepine (CBZ)	NC	40% decrease
CBZ epoxide ^b	NC	NE
Valproic acid	11% decrease	14% decrease
Phenobarbital	NC	NE
Primidone	NC	NE
Lamotrigine	NC at TPM doses up to 400 mg per day	13% decrease

NC=Less than 10% change in plasma concentration

AED=Antiepileptic drug

NE=Not evaluated

TPM=topiramate

^aPlasma concentration increased 25% in some patients, generally those on a twice a day dosing regimen of phenytoin

^bIs not administered, but is an active metabolite of carbamazepine

Oral Contraceptives

In a pharmacokinetic interaction study in healthy volunteers with a concomitantly administered combination oral contraceptive product containing 1 mg norethindrone

(NET) plus 35 mcg ethinyl estradiol (EE), topiramate, given in the absence of other medications at doses of 50 to 200 mg per day, was not associated with statistically significant changes in mean exposure (AUC) to either component of the oral contraceptive. In another study, exposure to EE was statistically significantly decreased at doses of 200, 400, and 800 mg per day (18%, 21%, and 30%, respectively) when given as adjunctive therapy in patients taking valproic acid. In both studies, topiramate (50 mg per day to 800 mg per day) did not significantly affect exposure to NET and there was no significant dose-dependent change in EE exposure for doses of 50 to 200 mg per day. The clinical significance of the changes observed is not known [see *Drug Interactions* (7.4)].

Digoxin

In a single-dose study, serum digoxin AUC was decreased by 12% with concomitant topiramate administration. The clinical relevance of this observation has not been established.

Hydrochlorothiazide

A drug interaction study conducted in healthy volunteers evaluated the steady-state pharmacokinetics of hydrochlorothiazide (HCTZ) (25 mg every 24 hours) and topiramate (96 mg every 12 hours) when administered alone and concomitantly. The results of this study indicate that topiramate C_{max} increased by 27% and AUC increased by 29% when HCTZ was added to topiramate. The clinical significance of this change is unknown. The steady-state pharmacokinetics of HCTZ were not significantly influenced by the concomitant administration of topiramate. Clinical laboratory results indicated decreases in serum potassium after topiramate or HCTZ administration, which were greater when HCTZ and topiramate were administered in combination.

Metformin

A drug interaction study conducted in healthy volunteers evaluated the steady-state pharmacokinetics of metformin (500 mg every 12 hours) and topiramate in plasma when metformin was given alone and when metformin and topiramate (100 mg every 12 hours) were given simultaneously. The results of this study indicated that the mean metformin C_{max} and $AUC_{0\text{ to }12h}$ increased by 18% and 25%, respectively, when topiramate was added. Topiramate did not affect metformin T_{max} . The clinical significance of the effect of topiramate on metformin pharmacokinetics is not known. Oral plasma clearance of topiramate appears to be reduced when administered with metformin. The clinical significance of the effect of metformin on topiramate extended-release capsules pharmacokinetics is unclear.

Pioglitazone

A drug interaction study conducted in healthy volunteers evaluated the steady-state pharmacokinetics of topiramate and pioglitazone when administered alone and concomitantly. A 15% decrease in the $AUC_{T,ss}$ of pioglitazone with no alteration in $C_{max,ss}$ was observed. This finding was not statistically significant. In addition, a 13% and 16% decrease in $C_{max,ss}$ and $AUC_{T,ss}$ respectively, of the active hydroxy-metabolite was noted as well as a 60% decrease in $C_{max,ss}$ and $AUC_{T,ss}$ of the active keto-metabolite. The clinical significance of these findings is not known.

Glyburide

A drug-drug interaction study conducted in patients with type 2 diabetes evaluated the

steady-state pharmacokinetics of glyburide (5 mg per day) alone and concomitantly with topiramate (150 mg per day). There was a 22% decrease in C_{\max} and a 25% reduction in AUC_{24} for glyburide during topiramate administration. Systemic exposure (AUC) of the active metabolites, 4-*trans*-hydroxy glyburide (M1) and 3-*cis*-hydroxyglyburide (M2), was also reduced by 13% and 15% and C_{\max} was reduced by 18% and 25%, respectively. The steady-state pharmacokinetics of topiramate were unaffected by concomitant administration of glyburide.

Lithium

In patients, the pharmacokinetics of lithium were unaffected during treatment with topiramate at doses of 200 mg per day; however, there was an observed increase in systemic exposure of lithium (27% for C_{\max} and 26% for AUC) following topiramate doses up to 600 mg per day [see *Drug Interactions* (7.7)].

Haloperidol

The pharmacokinetics of a single dose of haloperidol (5 mg) were not affected following multiple dosing of topiramate (100 mg every 12 hr) in 13 healthy adults (6 males, 7 females).

Amitriptyline

There was a 12% increase in AUC and C_{\max} for amitriptyline (25 mg per day) in 18 healthy subjects (9 males, 9 females) receiving 200 mg per day of topiramate.

Sumatriptan

Multiple dosing of topiramate (100 mg every 12 hours) in 24 healthy volunteers (14 males, 10 females) did not affect the pharmacokinetics of single-dose sumatriptan either orally (100 mg) or subcutaneously (6 mg).

Risperidone

When administered concomitantly with topiramate at escalating doses of 100, 250, and 400 mg per day, there was a reduction in risperidone systemic exposure (16% and 33% for steady-state AUC at the 250 and 400 mg per day doses of topiramate). No alterations of 9-hydroxyrisperidone levels were observed. Coadministration of topiramate 400 mg per day with risperidone resulted in a 14% increase in C_{\max} and a 12% increase in AUC_{12} of topiramate. There were no clinically significant changes in the systemic exposure of risperidone plus 9-hydroxyrisperidone or of topiramate; therefore, this interaction is not likely to be of clinical significance.

Propranolol

Multiple dosing of topiramate (200 mg per day) in 34 healthy volunteers (17 males, 17 females) did not affect the pharmacokinetics of propranolol following daily 160 mg doses. Propranolol doses of 160 mg per day in 39 volunteers (27 males, 12 females) had no effect on the exposure to topiramate, at a dose of 200 mg per day of topiramate.

Dihydroergotamine

Multiple dosing of topiramate (200 mg per day) in 24 healthy volunteers (12 males, 12 females) did not affect the pharmacokinetics of a 1 mg subcutaneous dose of dihydroergotamine. Similarly, a 1 mg subcutaneous dose of dihydroergotamine did not affect the pharmacokinetics of a 200 mg per day dose of topiramate in the same study.

Diltiazem

Coadministration of diltiazem (240 mg Cardizem CD[®]) with topiramate (150 mg per day) resulted in a 10% decrease in C_{\max} and 25% decrease in diltiazem AUC, a 27% decrease in C_{\max} and an 18% decrease in des-acetyl diltiazem AUC, and no effect on N-desmethyl diltiazem. Co-administration of topiramate with diltiazem resulted in a 16% increase in C_{\max} and a 19% increase in AUC₁₂ of topiramate.

Venlafaxine

Multiple dosing of topiramate (150 mg per day) in healthy volunteers did not affect the pharmacokinetics of venlafaxine or O-desmethyl venlafaxine. Multiple dosing of venlafaxine (150 mg) did not affect the pharmacokinetics of topiramate.

12.6 Relative Bioavailability of Topiramate Extended-Release Capsules Compared to Immediate-Release Topiramate in Healthy Volunteers

Topiramate extended-release capsules, taken once daily, provides similar steady-state topiramate concentrations to immediate-release topiramate taken every 12 hours, when administered at the same total daily dose. In a healthy volunteer, multiple-dose crossover study, the 90% CI for the ratios of AUC₀₋₂₄, C_{\max} and C_{\min} , as well as partial AUC (the area under the concentration-time curve from time 0 to time p (post dose)) for multiple time points were within the 80% to 125% bioequivalence limits, indicating no clinically significant difference between the two formulations. In addition, the 90% CI for the ratios of topiramate plasma concentration at each of multiple time points over 24 hours for the two formulations were within the 80% to 125% bioequivalence limits, except for the initial time points before 3 hours and at 8 hours post-dose, which is not expected to have a significant clinical impact.

The effects of switching between topiramate extended-release capsules and immediate-release topiramate were also evaluated in the same multiple-dose, crossover, comparative bioavailability study. In healthy subjects switched from immediate-release topiramate given every 12 hours to topiramate extended-release capsules given once daily, similar concentrations were maintained immediately after the formulation switch. On the first day following the switch, there were no significant differences in AUC₀₋₂₄, C_{\max} , and C_{\min} , as the 90% CI for the ratios were contained within the 80% to 125% equivalence limits.

13 NONCLINICAL TOXICOLOGY

13.1 Carcinogenesis, Mutagenesis, Impairment of Fertility

Carcinogenesis

An increase in urinary bladder tumors was observed in mice given topiramate (0, 20, 75, and 300 mg/kg/day) in the diet for 21 months. An increase in the incidence of bladder tumors in males and females receiving 300 mg/kg/day was primarily due to the increased occurrence of a smooth muscle tumor considered histomorphologically unique to mice. The higher of the doses not associated with an increase in tumors (75 mg/kg/day) is equivalent to the maximum recommended human dose (MRHD) for epilepsy (400 mg) and approximately 4 times the MRHD for migraine (100 mg) on a mg/m² basis. The relevance of this finding to human carcinogenic risk is uncertain.

No evidence of carcinogenicity was seen in rats following oral administration of topiramate for 2 years at doses up to 120 mg/kg/day (approximately 3 times the MRHD for epilepsy and 12 times the MRHD for migraine on a mg/m² basis).

Mutagenesis

Topiramate did not demonstrate genotoxic potential when tested in a battery of *in vitro* and *in vivo* assays. Topiramate was not mutagenic in the Ames test or the *in vitro* mouse lymphoma assay; it did not increase unscheduled DNA synthesis in rat hepatocytes *in vitro*; and it did not increase chromosomal aberrations in human lymphocytes *in vitro* or in rat bone marrow *in vivo*.

Impairment of Fertility

No adverse effects on male or female fertility were observed in rats administered topiramate orally at doses up to 100 mg/kg/day (2.5 times the MRHD for epilepsy and 10 times the MRHD for migraine on a mg/m² basis) prior to and during mating and early pregnancy.

14 CLINICAL STUDIES

14.1 Extended-Release: Bridging Study to Demonstrate Pharmacokinetic Equivalence between Extended-Release and Immediate-Release Topiramate Formulations

Although a controlled clinical trial was performed (Study 14) [see *Clinical Studies* (14.4)], the basis for approval of the extended-release formulation (topiramate extended-release capsules) included the studies described below using an immediate-release formulation [see *Clinical Studies* (14.2, 14.3, 14.5)] and the demonstration of the pharmacokinetic equivalence of topiramate extended-release capsules to immediate-release topiramate through the analysis of concentrations and cumulative AUCs at multiple time points [see *Clinical Pharmacology* (12.6)].

14.2 Monotherapy Epilepsy

Patients with Partial-Onset or Primary Generalized Tonic-Clonic Seizures

Adults and Pediatric Patients 10 Years of Age and Older

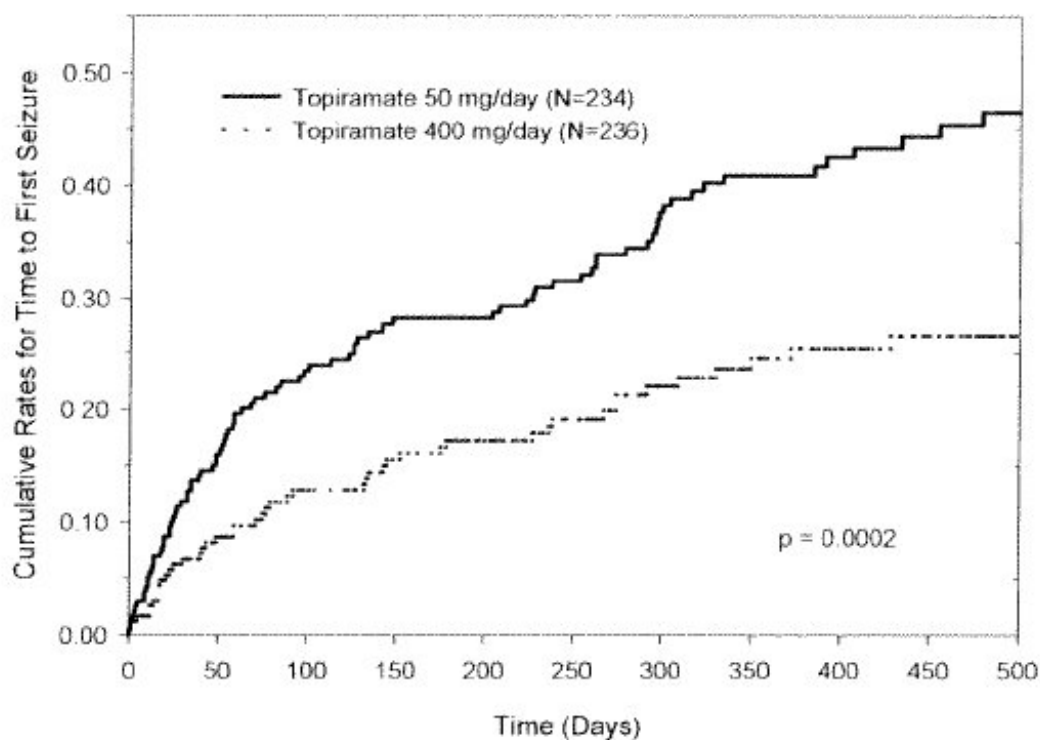
The effectiveness of topiramate as initial monotherapy in adults and pediatric patients 10 years of age and older with partial-onset or primary generalized tonic-clonic seizures was established in a multicenter, randomized, double-blind, dose-controlled, parallel-group trial (Study 1).

Study 1 was conducted in 487 patients diagnosed with epilepsy (6 to 83 years of age) who had 1 or 2 well-documented seizures during the 3-month retrospective baseline phase who then entered the study and received topiramate 25 mg/day for 7 days in an open-label fashion. Forty-nine percent of subjects had no prior AED treatment and 17% had a diagnosis of epilepsy for greater than 24 months. Any AED therapy used for temporary or emergency purposes was discontinued prior to randomization. In the double-blind phase, 470 patients were randomized to titrate up to 50 mg/day or 400 mg/day of topiramate. If the target dose could not be achieved, patients were maintained on the maximum tolerated dose. Fifty-eight percent of patients achieved the

maximal dose of 400 mg/day for ≥ 2 weeks, and patients who did not tolerate 150 mg/day were discontinued.

The primary efficacy assessment was a between-group comparison of time to first seizure during the double-blind phase. Comparison of the Kaplan-Meier survival curves of time to first seizure favored the topiramate 400 mg/day group over the topiramate 50 mg/day group (Figure 1). The treatment effects with respect to time to first seizure were consistent across various patient subgroups defined by age, sex, geographic region, baseline body weight, baseline seizure type, time since diagnosis, and baseline AED use.

Figure 1: Kaplan-Meier Estimates of Cumulative Rates for Time to First Seizure in Study 1



Pediatric Patients 2 to 9 Years of Age

The conclusion that topiramate is effective as initial monotherapy in pediatric patients 2 to 9 years of age with partial-onset or primary generalized tonic-clonic seizures was based on a pharmacometric bridging approach using data from the controlled epilepsy trials conducted with immediate-release topiramate described in labeling. This approach consisted of first showing a similar exposure-response relationship between pediatric patients down to 2 years of age and adults when immediate-release topiramate was given as adjunctive therapy. Similarity of exposure-response was also demonstrated in pediatric patients 6 to less than 16 years of age and adults when topiramate was given as initial monotherapy. Specific dosing in pediatric patients 2 to 9 years of age was derived from simulations utilizing plasma exposure ranges observed in pediatric and adult patients treated with immediate-release topiramate initial monotherapy [see *Dosage and Administration* (2.1)].

14.3 Adjunctive Therapy Epilepsy

Adult Patients with Partial-Onset Seizures

The effectiveness of topiramate as an adjunctive treatment for adults with partial-onset seizures was established in six multicenter, randomized, double-blind, placebo-controlled trials (Studies 2, 3, 4, 5, 6, and 7), two comparing several dosages of topiramate and placebo and four comparing a single dosage with placebo, in patients with a history of partial-onset seizures, with or without secondarily generalized seizures.

Patients in these studies were permitted a maximum of two antiepileptic drugs (AEDs) in addition to topiramate tablets or placebo. In each study, patients were stabilized on optimum dosages of their concomitant AEDs during baseline phase lasting between 4 and 12 weeks. Patients who experienced a pre-specified minimum number of partial-onset seizures, with or without secondary generalization, during the baseline phase (12 seizures for 12-week baseline, 8 for 8-week baseline or 3 for 4-week baseline) were randomly assigned to placebo or a specified dose of topiramate tablets in addition to their other AEDs.

Following randomization, patients began the double-blind phase of treatment. In five of the six studies, patients received active drug beginning at 100 mg per day; the dose was then increased by 100 mg or 200 mg/day increments weekly or every other week until the assigned dose was reached, unless intolerance prevented increases. In Study 7, the 25 or 50 mg/day initial doses of topiramate were followed by respective weekly increments of 25 or 50 mg/day until the target dose of 200 mg/day was reached. After titration, patients entered a 4, 8 or 12-week stabilization period. The numbers of patients randomized to each dose and the actual mean and median doses in the stabilization period are shown in Table 13.

Pediatric Patients 2 to 16 Years of Age with Partial-Onset Seizures

The effectiveness of topiramate as an adjunctive treatment for pediatric patients 2 to 16 years of age with partial-onset seizures was established in a multicenter, randomized, double-blind, placebo-controlled trial (Study 8), comparing topiramate and placebo in patients with a history of partial-onset seizures, with or without secondarily generalized seizures (see Table 14).

Patients in this study were permitted a maximum of two antiepileptic drugs (AEDs) in addition to topiramate tablets or placebo. In Study 8, patients were stabilized on optimum dosages of their concomitant AEDs during an 8-week baseline phase. Patients who experienced at least six partial-onset seizures, with or without secondarily generalized seizures, during the baseline phase were randomly assigned to placebo or topiramate tablets in addition to their other AEDs.

Following randomization, patients began the double-blind phase of treatment. Patients received active drug beginning at 25 or 50 mg/day; the dose was then increased by 25 mg to 150 mg/day increments every other week until the assigned dosage of 125, 175, 225, or 400 mg/day based on patients' weight to approximate a dosage of 6 mg/kg/day was reached, unless intolerance prevented increases. After titration, patients entered an 8-week stabilization period.

Patients with Primary Generalized Tonic-Clonic Seizures

The effectiveness of topiramate as an adjunctive treatment for primary generalized tonic-clonic seizures in patients 2 years of age and older was established in a multicenter, randomized, double-blind, placebo-controlled trial (Study 9), comparing a

single dosage of topiramate and placebo (see Table 14).

Patients in Study 9 were permitted a maximum of two antiepileptic drugs (AEDs) in addition to topiramate or placebo. Patients were stabilized on optimum dosages of their concomitant AEDs during an 8-week baseline phase. Patients who experienced at least three primary generalized tonic-clonic seizures during the baseline phase were randomly assigned to placebo or topiramate in addition to their other AEDs.

Following randomization, patients began the double-blind phase of treatment. Patients received active drug beginning at 50 mg/day for four weeks; the dose was then increased by 50 mg to 150 mg/day increments every other week until the assigned dose of 175, 225, or 400 mg/day based on patients' body weight to approximate a dosage of 6 mg/kg/day was reached, unless intolerance prevented increases. After titration, patients entered a 12-week stabilization period.

Patients with Lennox-Gastaut Syndrome

The effectiveness of topiramate as an adjunctive treatment for seizures associated with Lennox-Gastaut syndrome in patients 2 years of age and older was established in a multicenter, randomized, double-blind, placebo-controlled trial (Study 10) comparing a single dosage of topiramate with placebo (see Table 14).

Patients in Study 10 were permitted a maximum of two antiepileptic drugs (AEDs) in addition to topiramate or placebo. Patients who were experiencing at least 60 seizures per month before study entry were stabilized on optimum dosages of their concomitant AEDs during a 4-week baseline phase. Following baseline, patients were randomly assigned to placebo or topiramate in addition to their other AEDs. Active drug was titrated beginning at 1 mg/kg/day for a week; the dose was then increased to 3 mg/kg/day for one week, then to 6 mg/kg/day. After titration, patients entered an 8-week stabilization period. The primary measures of effectiveness were the percent reduction in drop attacks and a parental global rating of seizure severity.

Table 13: Immediate-Release Topiramate Dose Summary During the Stabilization Periods of Each of Six Double-Blind, Placebo-Controlled, Adjunctive Trials in Adults with Partial-Onset Seizures^a

Study	Stabilization Dose	Placebo ^b	Target Topiramate Dosage (mg/day)				
			200	400	600	800	1,000
2	N	42	42	40	41	--	--
	Mean Dose	5.9	200	390	556	--	--
	Median Dose	6	200	400	600	--	--
3	N	44	--	--	40	45	40
	Mean Dose	9.7	--	--	544	739	796
	Median Dose	10	--	--	600	800	1,000
4	N	23	--	19	--	--	--
	Mean Dose	3.8	--	395	--	--	--
	Median Dose	4	--	400	--	--	--
5	N	30	--	--	28	--	--
	Mean Dose	5.7	--	--	522	--	--
	Median Dose	6	--	--	600	--	--
	N	28	--	--	--	25	--

6	Mean Dose	7.9	--	--	--	568	--
	Median Dose	8	--	--	--	600	--
7	N	90	157	--	--	--	--
	Mean Dose	8	200	--	--	--	--
	Median Dose	8	200	--	--	--	--

^aDose-response studies were not conducted for other indications or pediatric partial-onset seizures

^bPlacebo dosages are given as the number of tablets. Placebo target dosages were as follows: Study 4 (4 tablets/day); Studies 2 and 5 (6 tablets/day); Studies 6 and 7 (8 tablets/day); Study 3 (10 tablets/day)

In all adjunctive topiramate trials, the reduction in seizure rate from baseline during the entire double-blind phase was measured. The median percent reductions in seizure rates and the responder rates (fraction of patients with at least a 50% reduction) by treatment group for each study are shown below in Table 14. As described above, a global improvement in seizure severity was also assessed in the Lennox-Gastaut trial.

Table 14: Efficacy Results in Double-Blind, Placebo-Controlled, Adjunctive Epilepsy Trials

Study #	#	Placebo	Target Topiramate Dosage (mg per day)					
			200	400	600	800	1,000	≈6mg/kg/day*
Partial-Onset Seizures Studies in Adults								
2	N	45	45	45	46	--	--	--
	Median % Reduction	12	27 ^a	48 ^b	45 ^c	--	--	--
	% Responders	18	24	44 ^d	46 ^d	--	--	--
3	N	47	--	--	48	48	47	--
	Median % Reduction	2	--	--	41 ^c	41 ^c	36 ^c	--
	% Responders	9	--	--	40 ^c	41 ^c	36 ^d	--
4	N	24	--	23	--	--	--	--
	Median % Reduction	1	--	41 ^e	--	--	--	--
	% Responders	8	--	35 ^d	--	--	--	--
5	N	30	--	--	30	--	--	--
	Median % Reduction	-12	--	--	46 ^f	--	--	--
	% Responders	10	--	--	47 ^c	--	--	--
6	N	28	--	--	--	28	--	--
	Median % Reduction	-21	--	--	--	24 ^c	--	--
	% Responders	0	--	--	--	43 ^c	--	--
7	N	91	168	--	--	--	--	--
	Median % Reduction	20	44 ^c	--	--	--	--	--
	% Responders	24	45 ^c	--	--	--	--	--

Partial-Onset Seizures Studies in Pediatric Patients

8	N	45	--	--	--	--	--	41
	Median % Reduction	11	--	--	--	--	--	33 ^d
	% Responders	20	--	--	--	--	--	39
Primary Generalized Tonic-Clonic^h								
9	N	40	--	--	--	--	--	39
	Median % Reduction	9	--	--	--	--	--	57 ^d
	% Responders	20	--	--	--	--	--	56 ^c
Lennox-Gastaut Syndromeⁱ								
10	N							
	Median % Reduction	49	--	--	--	--	--	46
	% Responders	-5	--	--	--	--	--	15 ^d
	Improvement in Seizure Severity ^j	14	--	--	--	--	--	28 ^g
		28	--	--	--	--	--	52 ^d

Comparisons with placebo: ^ap=0.080; ^bp ≤ 0.010; ^cp ≤ 0.001; ^dp ≤ 0.050; ^ep=0.065; ^fp ≤ 0.005; ^gp=0.071

^hMedian % reduction and % responders are reported for PGTC seizures

ⁱMedian % reduction and % responders for drop attacks, i.e., tonic or atonic seizures

^jPercent of subjects who were minimally, much, or very much improved from baseline.

*For Studies 8 and 9, specified target dosages (less than 9.3 mg/kg/day) were assigned based on subject's weight to approximate a dosage of 6 mg/kg/day; these dosages corresponded to mg per day dosages of 125 mg per day, 175 mg per day, 225 mg per day, and 400 mg per day

Subset analyses of the antiepileptic efficacy of topiramate tablets in these studies showed no differences as a function of gender, race, age, baseline seizure rate, or concomitant AED.

In clinical trials for epilepsy, daily dosages were decreased in weekly intervals by 50 to 100 mg/day in adults and over a 2- to 8-week period in pediatric patients; transition was permitted to a new antiepileptic regimen when clinically indicated.

14.4 Extended-Release: Adjunctive Therapy in Adult Patients with Partial-Onset Seizures with Topiramate Extended-Release Capsules

The effectiveness of topiramate extended-release capsules as an adjunctive treatment for adults (18 to 75 years of age) was evaluated in a randomized, international, multi-center, double-blind, parallel-group, placebo-controlled trial in patients with a history of partial-onset seizures, with or without secondary generalization (Study 14).

Patients with partial-onset seizures on a stable dose of 1 to 3 AEDs entered into an 8-week baseline period. Patients who experienced at least 8 partial-onset seizures, with or without secondary generalization, and no more than 21 consecutive seizure free days during the 8-week baseline phase were randomly assigned to placebo or topiramate extended-release capsules administered once daily in addition to their concomitant

AEDs. Following randomization, 249 patients began the double-blind treatment phase, which consisted of an initial 3-week titration period followed by an 8-week maintenance period. During the titration period, patients received topiramate extended-release capsules or placebo beginning at 50 mg once daily; the dose was increased at weekly intervals by 50 mg once daily, or the placebo equivalent, until a final dose of 200 mg once daily was achieved. Patients then entered the maintenance period at the assigned dose of 200 mg once daily, or its placebo equivalent.

The percent reduction in the frequency of partial-onset seizure, baseline period compared to the treatment phase, was the primary endpoint. Data was analyzed by the Wilcoxon rank-sum test, with the criteria of statistical significance of $p < 0.05$. The results of the analysis are presented in Table 15. The median percent reduction in seizure rate was 39.5% in patients taking topiramate extended-release capsules (N=124) and 21.7% in patients taking placebo (N=125). This difference was statistically significant.

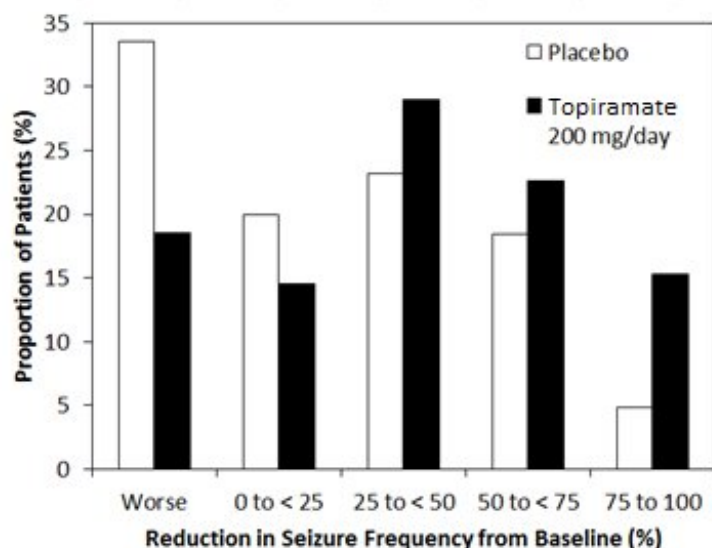
Table 15: Percent Reduction From Baseline in Partial-Onset Seizure Frequency During 11-week Treatment Period in Study 14

Study End Point	Topiramate Extended-Release Capsules (N=124)	Placebo (N=125)
Median Percent Reduction from Baseline ^a	39.5%	21.7%

^aStatistically Significant by the Wilcoxon rank-sum test

Figure 2 shows the change from baseline during titration plus maintenance (11 weeks) in partial-onset seizure frequency by category for patients treated with topiramate extended-release capsules and placebo. Patients in whom the seizure frequency increased are shown as “worse.” Patients in whom the seizure frequency decreased are shown in four categories of reduction in seizure frequency.

Figure 2: Proportion of Patients by Category of Seizure Response to Topiramate Extended-Release Capsules and Placebo



14.5 Preventive Treatment of Migraine

Adult Patients

The results of 2 multicenter, randomized, double-blind, placebo-controlled, parallel-group clinical trials conducted in the US (Study 11) or the US and Canada (Study 12) established the effectiveness of immediate-release topiramate in the preventive treatment of migraine. The design of both trials was identical, enrolling patients with a history of migraine, with or without aura, for at least 6 months, according to the International Headache Society (IHS) diagnostic criteria. Patients with a history of cluster headaches or basilar, ophthalmoplegic, hemiplegic, or transformed migraine headaches were excluded from the trials. Patients were required to have completed up to a 2-week washout of any prior migraine preventive medications before starting the baseline phase.

Patients who experienced 3 to 12 migraine headaches over the 4 weeks in the baseline phase were randomized to either topiramate 50 mg/day, 100 mg/day, 200 mg/day (twice the recommended daily dosage for the preventive treatment of migraine), or placebo and treated for a total of 26 weeks (8-week titration period and 18-week maintenance period). Treatment was initiated at 25 mg/day for one week, and then the daily dosage was increased by 25 mg increments each week until reaching the assigned target dose or maximum tolerated dose (administered twice daily).

Effectiveness of treatment was assessed by the reduction in migraine headache frequency, as measured by the change in 4-week migraine rate (according to migraines classified by IHS criteria) from the baseline phase to double-blind treatment period in each immediate-release topiramate treatment group compared to placebo in the Intent-To-Treat (ITT) population.

In Study 11, a total of 469 patients (416 females, 53 males), ranging in age from 13 to 70 years, were randomized and provided efficacy data. Two hundred sixty-five patients completed the entire 26-week double-blind phase. The median average daily dosages were 48 mg/day, 88 mg/day, and 132 mg/day in the target dose groups of topiramate 50, 100, and 200 mg/day, respectively.

The mean migraine headache frequency rate at baseline was approximately 5.5 migraine

headaches per 28 days and was similar across treatment groups. The change in the mean 4-week migraine headache frequency from baseline to the double-blind phase was -1.3, -2.1, and -2.2 in the immediate-release topiramate 50, 100, and 200 mg/day groups, respectively, versus -0.8 in the placebo group (see Figure 3). The treatment differences between the immediate-release topiramate 100 and 200 mg/day groups versus placebo were similar and statistically significant ($p < 0.001$ for both comparisons).

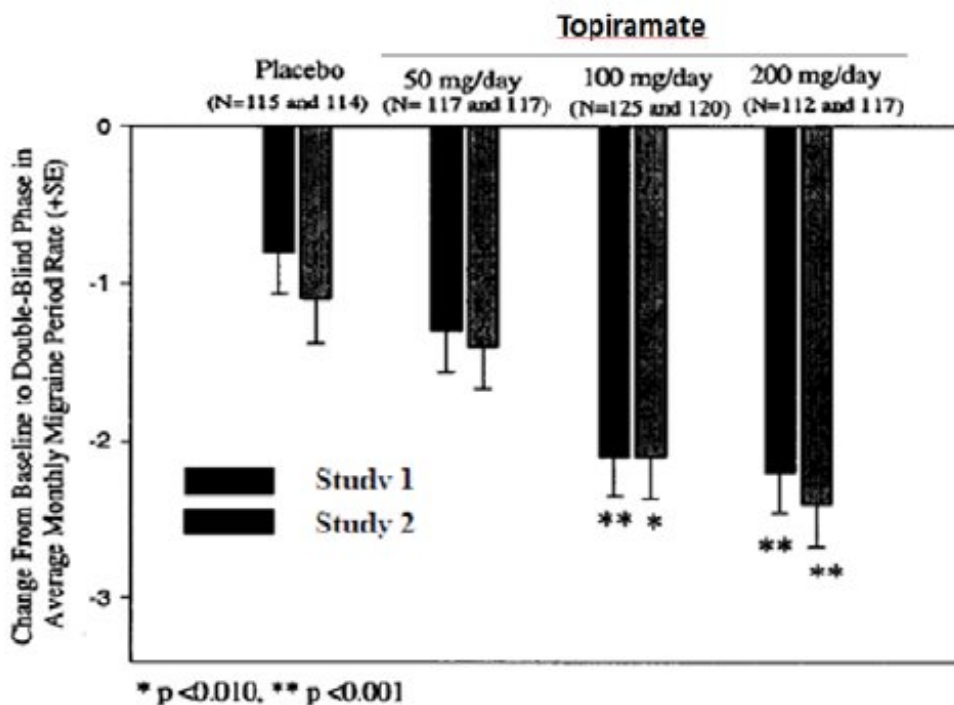
In Study 12, a total of 468 patients (406 females, 62 males), ranging in age from 12 to 65 years, were randomized and provided efficacy data. Two hundred fifty-five patients completed the entire 26-week double-blind phase. The median average daily dosages were 47 mg/day, 86 mg/day, and 150 mg/day in the target dose groups of immediate-release topiramate 50, 100, and 200 mg/day, respectively.

The mean migraine headache frequency rate at baseline was approximately 5.5 migraine headaches per 28 days and was similar across treatment groups. The change in the mean 4-week migraine headache period frequency from baseline to the double-blind phase was -1.4, -2.1, and -2.4 in the immediate-release topiramate 50, 100, and 200 mg/day groups, respectively, versus -1.1 in the placebo group (see Figure 3). The differences between the immediate-release topiramate 100 and 200 mg/day groups versus placebo were similar and statistically significant ($p = 0.008$ and $p < 0.001$, respectively).

In both studies, there were no apparent differences in treatment effect within age or gender subgroups. Because most patients were Caucasian, there were insufficient numbers of patients from different races to make a meaningful comparison of race.

For patients withdrawing from immediate-release topiramate, daily dosages were decreased in weekly intervals by 25 to 50 mg/day.

Figure 3: Reduction in 4-Week Migraine Headache Frequency (Studies 11 and 12 for Adults and Adolescents)



Pediatric Patients 12 to 17 Years of Age

The effectiveness of immediate-release topiramate for the preventive treatment of migraine in pediatric patients 12 to 17 years of age was established in a multicenter, randomized, double-blind, parallel-group trial (Study 13). The study enrolled 103 patients (40 male, 63 female) 12 to 17 years of age with episodic migraine headaches with or without aura. Patient selection was based on IHS criteria for migraines (using proposed revisions to the 1988 IHS pediatric migraine criteria [IHS-R criteria]).

Patients who experienced 3 to 12 migraine attacks (according to migraines classified by patient reported diaries) and ≤ 14 headache days (migraine and non-migraine) during the 4-week prospective baseline period were randomized to either immediate-release topiramate 50 mg/day, 100 mg/day, or placebo and treated for a total of 16 weeks (4-week titration period followed by a 12-week maintenance period). Treatment was initiated at 25 mg/day for one week, and then the daily dosage was increased by 25 mg increments each week until reaching the assigned target dose or maximum tolerated dose (administered twice daily). Approximately 80% or more patients in each treatment group completed the study. The median average daily dosages were 45 and 79 mg/day in the target dose groups of immediate-release topiramate 50 and 100 mg/day, respectively.

Effectiveness of treatment was assessed by comparing each immediate-release topiramate treatment group to placebo (ITT population) for the percent reduction from baseline to the last 12 weeks of the double-blind phase in the monthly migraine attack rate (primary endpoint). The percent reduction from baseline to the last 12 weeks of the double-blind phase in average monthly migraine attack rate is shown in Table 16. The 100 mg immediate-release topiramate dose produced a statistically significant treatment difference relative to placebo of 28% reduction from baseline in the monthly migraine attack rate.

The mean reduction from baseline to the last 12 weeks of the double-blind phase in average monthly attack rate, a key secondary efficacy endpoint in Study 13 (and the primary efficacy endpoint in Studies 11 and 12, of adults) was 3 for 100 mg immediate-release topiramate dose and 1.7 for placebo. This 1.3 treatment difference in mean reduction from baseline of monthly migraine rate was statistically significant ($p = 0.0087$).

Table 16: Percent Reduction from Baseline to the Last 12 Weeks of Double-Blind Phase in Average Monthly Attack Rate: Study 13 (Intent-to-Treat Analysis Set)

Category	Placebo (N=33)	Topiramate 50 mg/day (N=35)	Topiramate 100 mg/day (N=35)
Baseline			
Median	3.6	4	4
Last 12 Weeks of Double-Blind Phase			
	2.3	2.3	1

Median

**Percent Reduction
(%)**

Median	44.4	44.6	72.2
P-value versus Placebo ^{a,b}		0.7975	0.0164 ^c

^aP-values (two-sided) for comparisons relative to placebo are generated by applying an ANCOVA model on ranks that includes subject's stratified age at baseline, treatment group, and analysis center as factors and monthly migraine attack rate during baseline period as a covariate.

^bP-values for the dose groups are the adjusted p-value according to the Hochberg multiple comparison procedure.

^cIndicates p-value is < 0.05 (two-sided).

16 HOW SUPPLIED/STORAGE AND HANDLING

16.1 How Supplied

Topiramate Extended-Release Capsules contain pellets of topiramate in a capsule and are available in the following strengths and colors:

25 mg: flesh colored cap printed with “G” in black ink and light grey body printed with “367” in black ink. 25 mg capsules are supplied in the following package configurations:

- Bottles of 30 with desiccant and a child-resistant closure, NDC 72603-120-01

50 mg: light orange cap printed with “G” in black ink and light grey body printed with “368” in black ink. 50 mg capsules are supplied in the following package configurations:

- Bottles of 30 with desiccant and a child-resistant closure, NDC 72603-121-01

100 mg: reddish orange cap printed with “G” in black ink and light grey body printed with “369” in black ink. 100 mg capsules are supplied in the following package configurations:

- Bottles of 30 with desiccant and a child-resistant closure, NDC 72603-122-01

150 mg: grey cap printed with “G” in black ink and light grey body printed with “370” in black ink. 150 mg capsules are supplied in the following package configurations:

- Bottles of 30 with desiccant and a child-resistant closure, NDC 72603-123-01

200 mg: brown cap printed with “G” in black ink and light grey body printed with “371” in black ink. 200 mg capsules are supplied in the following package configurations:

- Bottles of 30 with desiccant and a child-resistant closure, NDC 72603-124-01

16.2 Storage and Handling

Topiramate Extended-Release Capsules should be stored in a tightly-closed container at 20°C to 25°C (68°F to 77°F); excursions permitted to 15°C to 30°C (59°F to 86°F) [see USP Controlled Room Temperature]. Protect from moisture.

17 PATIENT COUNSELING INFORMATION

Advise patients to read the FDA-approved patient labeling (Medication Guide).

Administration Instructions

Counsel patients to swallow topiramate extended-release capsules whole or carefully open and sprinkle the entire contents on a spoonful of soft food. This drug/food mixture should be swallowed immediately and not chewed. Do not store drug/food mixture for future use [see *Dosage and Administration (2.6)*].

Eye Disorders

Advise patients taking topiramate extended-release capsules to seek immediate medical attention if they experience blurred vision, visual disturbances or periorbital pain [see *Warnings and Precautions (5.1 and 5.2)*].

Oligohydrosis and Hyperthermia

Closely monitor topiramate extended-release capsules-treated patients, especially pediatric patients, for evidence of decreased sweating and increased body temperature, especially in hot weather. Counsel patients to contact their healthcare professionals immediately if they develop a high or persistent fever, or decreased sweating [see *Warnings and Precautions (5.3)*].

Metabolic Acidosis

Warn patients about the potential significant risk for metabolic acidosis that may be asymptomatic and may be associated with adverse effects on kidneys (e.g., kidney stones, nephrocalcinosis), bones (e.g., osteoporosis, osteomalacia, and/or rickets in children), and growth (e.g., growth delay/retardation) in pediatric patients, and on the fetus [see *Warnings and Precautions (5.4), Use in Specific Populations (8.1), (8.4)*].

Suicidal Behavior and Ideation

Counsel patients, their caregivers, and families that AEDs, including topiramate extended-release capsules, may increase the risk of suicidal thoughts and behavior and they should be advised of the need to be alert for the emergence or worsening of the signs and symptoms of depression, any unusual changes in mood or behavior or the emergence of suicidal thoughts, behavior or thoughts about self-harm. Instruct patients to immediately report behaviors of concern to their healthcare providers [see *Warnings and Precautions (5.5)*].

Interference with Cognitive and Motor Performance

Warn patients about the potential for somnolence, dizziness, confusion, difficulty concentrating, visual effects, and advise patients not to drive or operate machinery until they have gained sufficient experience on topiramate extended-release capsules to

gauge whether it adversely affects their mental performance, motor performance, and/or vision [*see Warnings and Precautions (5.6)*].

Even when taking topiramate extended-release capsules, or other anticonvulsants, some patients with epilepsy will continue to have unpredictable seizures. Therefore, advise all patients taking topiramate extended-release capsules for epilepsy to exercise appropriate caution when engaging in any activities where loss of consciousness could result in serious danger to themselves or those around them (including swimming, driving a car, climbing in high places, etc.). Some patients with refractory epilepsy will need to avoid such activities altogether. Discuss the appropriate level of caution with patients, before patients with epilepsy engage in such activities.

Fetal Toxicity

Inform pregnant women and women of childbearing potential that use of topiramate extended-release capsules during pregnancy can cause fetal harm. Topiramate extended-release capsules increased the risk of major congenital malformations, including but not limited to cleft lip and/or cleft palate (oral clefts), which occur early in pregnancy before many women know they are pregnant. Also inform patients that infants exposed to topiramate monotherapy *in utero* may be small for their gestational age. There may also be risks to the fetus from chronic metabolic acidosis with use of topiramate extended-release capsules during pregnancy [*see Warnings and Precautions (5.4), (5.7), Use in Specific Populations (8.1)*].

When appropriate, counsel pregnant women and women of childbearing potential about alternative therapeutic options. Advise women of childbearing potential who are not planning a pregnancy to use effective contraception while using topiramate extended-release capsules, keeping in mind that there is a potential for decreased contraceptive efficacy when using estrogen-containing birth control with topiramate [*see Drug Interactions (7.4)*].

Encourage pregnant women using topiramate extended-release capsules to enroll in the North American Antiepileptic Drug (NAAED) Pregnancy Registry. The registry is collecting information about the safety of antiepileptic drugs during pregnancy [*see Use in Specific Populations (8.1)*].

Decrease in Bone Mineral Density

Inform the patient or caregiver that long-term treatment with topiramate extended-release capsules can decrease bone formation and increase bone resorption in children [*see Warnings and Precautions (5.9)*].

Negative Effects on Growth (Height and Weight)

Discuss with the patient or caregiver that long-term topiramate extended-release capsules treatment may attenuate growth as reflected by slower height increase and weight gain in pediatric patients [*see Warnings and Precautions (5.10)*].

Serious Skin Reactions

Inform patients about the signs of serious skin reactions. Instruct patients to immediately inform their healthcare provider at the first appearance of skin rash [*see Warnings and Precautions (5.11)*].

Hyperammonemia and Encephalopathy

Warn patients about the possible development of hyperammonemia with or without encephalopathy. Although hyperammonemia may be asymptomatic, clinical symptoms of hyperammonemic encephalopathy often include acute alterations in level of consciousness and/or cognitive function with lethargy and/or vomiting. This hyperammonemia and encephalopathy can develop with topiramate treatment alone or with topiramate treatment with concomitant valproic acid (VPA). Instruct patients to contact their physician if they develop unexplained lethargy, vomiting, or changes in mental status [see *Warnings and Precautions* (5.12)].

Kidney Stones

Instruct patients, particularly those with predisposing factors, to maintain an adequate fluid intake in order to minimize the risk of kidney stone formation [see *Warnings and Precautions* (5.13)].

Hypothermia

Counsel patients that topiramate extended-release capsules can cause a reduction in body temperature, which can lead to alterations in mental status. If they note such changes, they should call their health care professional and measure their body temperature. Patients taking concomitant valproic acid should be specifically counseled on this potential adverse reaction [see *Warnings and Precautions* (5.14)].

Medication Guide available at

www.northstarrxllc.com/products or call 1-800-206-7821

Manufactured for:

Northstar Rx LLC

Memphis, TN 38141.

Manufactured by:

Glenmark Pharmaceuticals Limited

India

February 2023

MEDICATION GUIDE

MEDICATION GUIDE Topiramate (toe pir' a mate) Extended-Release Capsules, for oral use
What is the most important information I should know about topiramate extended-release capsules? Topiramate extended-release capsules may cause eye problems. Serious eye problems include: <ul style="list-style-type: none">• any sudden decrease in vision with or without eye pain and redness,• a blockage of fluid in the eye causing increased pressure in the eye (secondary angle closure glaucoma).

These eye problems can lead to permanent loss of vision if not treated. You should call your healthcare provider right away if you have any new eye symptoms, including any new problems with your vision.

Topiramate extended-release capsules may cause decreased sweating and increased body temperature (fever). People, especially children, should be watched for signs of decreased sweating and fever, especially in hot temperatures. Some people may need to be hospitalized for this condition. If you have a high fever, a fever that does not go away, or decreased sweating develops, call your healthcare provider right away.

Topiramate extended-release capsules can increase the level of acid in your blood (metabolic acidosis). If left untreated, metabolic acidosis can cause brittle or soft bones (osteoporosis, osteomalacia, osteopenia), kidney stones, can slow the rate of growth in children, and may possibly harm your baby if you are pregnant. Metabolic acidosis can happen with or without symptoms. Sometimes people with metabolic acidosis will:

- feel tired
- not feel hungry (loss of appetite)
- feel changes in heartbeat
- have trouble thinking clearly

Your healthcare provider should do a blood test to measure the level of acid in your blood before and during your treatment with topiramate extended-release capsules.

If you are pregnant, you should talk to your healthcare provider about whether you have metabolic acidosis.

Like other antiepileptic drugs, topiramate extended-release capsules may cause suicidal thoughts or actions in a very small number of people, about 1 in 500.

Call a healthcare provider right away if you have any of these symptoms, especially if they are new, worse, or worry you:

Do not stop topiramate extended-release capsules without first talking to a healthcare provider.

- Stopping topiramate extended-release capsules suddenly can cause serious problems.
- Suicidal thoughts or actions can be caused by things other than medicines. If you have suicidal thoughts or actions, your healthcare provider may check for other causes.

How can I watch for early symptoms of suicidal thoughts and actions?

- Pay attention to any changes, especially sudden changes, in mood, behaviors, thoughts, or feelings.
- Keep all follow-up visits with your healthcare provider as scheduled.
- Call your healthcare provider between visits as needed, especially if you are worried about symptoms.

Topiramate extended-release capsules can harm your unborn baby.

- If you take topiramate extended-release capsules during pregnancy, your baby has a higher risk for birth defects including cleft lip and cleft palate. These defects can

begin early in pregnancy, even before you know you are pregnant.

- Birth defects may happen even in children born to women who are not taking any medicines and do not have other risk factors.
- There may be other medicines to treat your condition that have a lower chance of birth defects.
- All women of childbearing age should talk to their healthcare providers about using other possible treatments instead of topiramate extended-release capsules. If the decision is made to use topiramate extended-release capsules, you should use effective birth control (contraception) unless you are planning to become pregnant. You should talk to your healthcare provider about the best kind of birth control to use while you are taking topiramate extended-release capsules.
- Tell your healthcare provider right away if you become pregnant while taking topiramate extended-release capsules. You and your healthcare provider should decide if you will continue to take topiramate extended-release capsules while you are pregnant.
- If you take topiramate extended-release capsules during pregnancy, your baby may be smaller than expected at birth. The long-term effects of this are not known. Talk to your healthcare provider if you have any questions about this risk during pregnancy.
- Metabolic acidosis may have harmful effects on your baby. Talk to your healthcare provider if topiramate extended-release capsules has caused metabolic acidosis during your pregnancy.
- Pregnancy Registry: If you become pregnant while taking topiramate extended-release capsules, talk to your healthcare provider about registering with the North American Antiepileptic Drug Pregnancy Registry. You can enroll in this registry by calling 1-888-233-2334. The purpose of this registry is to collect information about the safety of topiramate extended-release capsules and other antiepileptic drugs during pregnancy.

Topiramate extended-release capsules may decrease the density of bones when used over a long period.

Topiramate extended-release capsules may slow height increase and weight gain in children and adolescents when used over a long period.

What are topiramate extended-release capsules?

Topiramate extended-release capsules are prescription medicine used:

- to treat certain types of seizures (partial-onset seizures and primary generalized tonic-clonic seizures) in adults and children 2 years of age and older,
- with other medicines to treat certain types of seizures (partial-onset seizures, primary generalized tonic-clonic seizures, and seizures associated with Lennox-Gastaut syndrome) in adults and children 2 years of age and older,
- to prevent migraine headaches in adults and adolescents 12 years of age and older.

What should I tell my healthcare provider before taking topiramate extended-release capsules?

Before taking topiramate extended-release capsules, tell your healthcare provider about all of your medical conditions, including if you:

- have or have had depression, mood problems or suicidal thoughts or behavior

- have kidney problems, kidney stones or are getting kidney dialysis
- have a history of metabolic acidosis (too much acid in the blood)
- have liver problems
- have weak, brittle or soft bones (osteomalacia, osteoporosis, osteopenia, or decreased bone density)
- have lung or breathing problems
- have eye problems, especially glaucoma
- have diarrhea
- have a growth problem
- are on a diet high in fat and low in carbohydrates, which is called a ketogenic diet
- are having surgery
- are pregnant or plan to become pregnant
- are breastfeeding or plan to breastfeed. Topiramate passes into your breast milk. Breastfed babies may be sleepy or have diarrhea. It is not known if the topiramate that passes into breast milk can cause other serious harm to your baby. Talk to your healthcare provider about the best way to feed your baby if you take topiramate extended-release capsules.

Tell your healthcare provider about all the medicines you take, including prescription and over-the-counter medicines, vitamins, and herbal supplements. Topiramate extended-release capsules and other medicines may affect each other causing side effects. Especially tell your healthcare provider if you take:

- Valproic acid (such as DEPAKENE® or DEPAKOTE®)
- any medicines that impair or decrease your thinking, concentration, or muscle coordination
- birth control pills. Topiramate extended-release capsules may make your birth control pills less effective. Tell your healthcare provider if your menstrual bleeding changes while you are taking birth control pills and topiramate extended-release capsules.

Ask your healthcare provider if you are not sure if your medicine is listed above. Know the medicines you take. Keep a list of them to show your healthcare provider and pharmacist each time you get a new medicine. Do not start a new medicine without talking with your healthcare provider.

How should I take topiramate extended-release capsules?

- Take topiramate extended-release capsules exactly as your healthcare provider tells you to.
- Your healthcare provider may change your dose. **Do not** change your dose without talking to your healthcare provider.
- Topiramate extended-release capsules may be swallowed whole or, if you cannot swallow the capsule whole, you may carefully open the topiramate extended-release capsules and sprinkle the medicine on a spoonful of soft food like applesauce.
 - o Swallow the food and medicine mixture right away. **Do not** store the food and medicine mixture to use later.
 - o Do not crush or chew topiramate extended-release capsules before swallowing.

- Drink plenty of fluids during the day. This may help prevent kidney stones while taking topiramate extended-release capsules.
- If you take too much topiramate extended-release capsules, call your healthcare provider right away or go to the nearest emergency room.
- Topiramate extended-release capsules can be taken before, during, or after a meal.
- If you miss a single dose of topiramate extended-release capsules, take it as soon as you can. If you have missed more than one dose, you should call your healthcare provider for advice.
- Do not stop taking topiramate extended-release capsules without talking to your healthcare provider. Stopping topiramate extended-release capsules suddenly may cause serious problems. If you have epilepsy and you stop taking topiramate extended-release capsules suddenly, you may have seizures that do not stop. Your healthcare provider will tell you how to stop taking topiramate extended-release capsules slowly.
- Your healthcare provider may do blood tests while you take topiramate extended-release capsules.

What should I avoid while taking topiramate extended-release capsules?

- You should not drink alcohol while taking topiramate extended-release capsules. Topiramate extended-release capsules and alcohol can affect each other causing side effects such as sleepiness and dizziness.
- Do not drive a car or operate machinery until you know how topiramate extended-release capsules affects you. Topiramate extended-release capsules can slow your thinking and motor skills and may affect vision.

What are the possible side effects of topiramate extended-release capsules? Topiramate extended-release capsules may cause serious side effects, including:

See "What is the most important information I should know about topiramate extended-release capsules?"

- **High blood ammonia levels.** High ammonia in the blood can affect your mental activities, slow your alertness, make you feel tired, or cause vomiting. This has happened when topiramate extended-release capsules are taken with a medicine called valproic acid (DEPAKENE® and DEPAKOTE®).
- **Kidney stones.** Drink plenty of fluids when taking topiramate extended-release capsules to decrease your chances of getting kidney stones.
- **Low body temperature.** Taking topiramate extended-release capsules when you are also taking valproic acid can cause a drop-in body temperature to less than 95°F, or can cause tiredness, confusion, or coma.
- **Effects on thinking and alertness.** Topiramate extended-release capsules may affect how you think, and cause confusion, problems with concentration, attention, memory, or speech. Topiramate extended-release capsules may cause depression or mood problems, tiredness, and sleepiness.
- **Dizziness or loss of muscle coordination.**
- **Serious skin reactions.** Topiramate extended-release capsules may cause a severe rash with blisters and peeling skin, especially around the mouth, nose, eyes, and genitals (Stevens-Johnson syndrome). Topiramate extended-release capsules may also cause a rash with blisters and peeling skin over much of the body that

may cause death (toxic epidermal necrolysis). Call your healthcare provider right away if you develop a skin rash or blisters.

Call your healthcare provider right away if you have any of the symptoms above.

The most common side effects of topiramate extended-release capsules include:

Tell your healthcare provider about any side effect that bothers you or that does not go away.

These are not all the possible side effects of topiramate extended-release capsules. For more information, ask your healthcare provider or pharmacist.

Call your doctor for medical advice about side effects. You may report side effects to FDA at 1-800-FDA-1088.

You may also report side effects to contact Northstar Rx LLC at 1-800-206-7821.

How should I store topiramate extended-release capsules?

- Store topiramate extended-release capsules at room temperature between 68°F to 77°F (20°C to 25°C).
- Keep topiramate extended-release capsules in a tightly closed container.
- Keep topiramate extended-release capsules dry and away from moisture.
- **Keep topiramate extended-release capsules and all medicines out of the reach of children.**

General information about the safe and effective use of topiramate extended-release capsules:

Medicines are sometimes prescribed for purposes other than those listed in a Medication Guide. Do not use topiramate extended-release capsules for a condition for which it was not prescribed. Do not give topiramate extended-release capsules to other people, even if they have the same symptoms that you have. It may harm them. You can ask your pharmacist or healthcare provider for information about topiramate extended-release capsules that is written for health professionals.

What are the ingredients in topiramate extended-release capsules?

Active ingredient: topiramate, USP

Inactive ingredients: D&C red No.30, ethylcellulose, FD&C red No.40, hypromellose, microcrystalline cellulose, polyethylene glycol and talc.

The capsule shell for Topiramate Extended-Release Capsules, 25 mg contains black iron oxide, hypromellose, red iron oxide and titanium dioxide.

The capsule shell for Topiramate Extended-Release Capsules, 50 mg contains black iron oxide, hypromellose, red iron oxide, titanium dioxide, and yellow iron oxide.

The capsule shell for Topiramate Extended-Release Capsules, 100 mg contains black iron oxide, hypromellose, red iron oxide and titanium dioxide.

The capsule shell for Topiramate Extended-Release Capsules, 150 mg contains black iron oxide, hypromellose, and titanium dioxide.

The capsule shell for Topiramate Extended-Release Capsules, 200 mg contains black iron oxide, hypromellose, red iron oxide, titanium dioxide, and yellow iron oxide.

The imprinting ink has the following components: black iron oxide, potassium hydroxide, propylene glycol, shellac and strong ammonia solution.

This Medication Guide has been approved by the U.S. Food and Drug Administration.

Medication Guide available at

www.northstarrxllc.com/products or call 1-800-206-7821

Trademarks are the property of their respective owners.

Manufactured for:
Northstar Rx LLC
Memphis, TN 38141.
Manufactured by:
Glenmark Pharmaceuticals Limited
India
February 2023

Principle Display Panel

NDC 72603-120-01

Topiramate Extended-Release Capsules

25 mg

<p>Rx only</p> <p>NDC 72603-120-01</p> <p>Once-Daily Dosing</p> <p>Topiramate Extended-Release Capsules</p> <p>25 mg</p> <p>PHARMACIST: Dispense the Medication Guide provided separately to each patient.</p> <p>30 Capsules</p> <p>NORTHSTAR[®]</p>	<p>Each capsule contains: Topiramate, USP 25 mg.</p> <p>Recommended dosage: Administer dose once daily. See Prescribing Information.</p> <p>Keep out of reach of children. This package is child-resistant.</p> <p>Store in a tight container at 20°C to 25°C (68°F to 77°F); excursions permitted to 15°C to 30°C (59°F to 86°F) [see USP Controlled Room Temperature].</p> <p>Protect from moisture.</p> <p>Medication Guide available at www.northstarrxllc.com/products or call 1-800-206-7821</p> <p>Manufactured for: Northstar Rx LLC Memphis, TN 38141.</p> <p>Manufactured by: Glenmark Pharmaceuticals Limited Pithampur, Madhya Pradesh 454775, India</p> <p>Product of India MP/Drugs/25/9/2010</p> <p>09/2022 PE625630922-1</p>	<p>Barcode: 3 72603 12001 1</p> <p>© 2005 Northstar Healthcare Holdings Ltd.</p>
--	--	--

Principle Display Panel

NDC 72603-121-01

Topiramate Extended-Release Capsules

50 mg

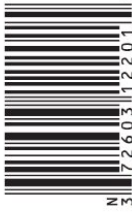
<p>Rx only</p> <p>NDC 72603-121-01</p> <p>Once-Daily Dosing</p> <p>Topiramate Extended-Release Capsules</p> <p>50 mg</p> <p>PHARMACIST: Dispense the Medication Guide provided separately to each patient.</p> <p>30 Capsules</p> <p>NORTHSTAR[®]</p>	<p>Each capsule contains: Topiramate, USP 50 mg.</p> <p>Recommended dosage: Administer dose once daily. See Prescribing Information.</p> <p>Keep out of reach of children. This package is child-resistant.</p> <p>Store in a tight container at 20°C to 25°C (68°F to 77°F); excursions permitted to 15°C to 30°C (59°F to 86°F) [see USP Controlled Room Temperature].</p> <p>Protect from moisture.</p> <p>Medication Guide available at www.northstarrxllc.com/products or call 1-800-206-7821</p> <p>Manufactured for: Northstar Rx LLC Memphis, TN 38141.</p> <p>Manufactured by: Glenmark Pharmaceuticals Limited Pithampur, Madhya Pradesh 454775, India</p> <p>Product of India MP/Drugs/25/9/2010</p> <p>09/2022 PE625640922-1</p>	<p>Barcode: 3 72603 12101 8</p> <p>© 2005 Northstar Healthcare Holdings Ltd.</p>
--	--	--

Principle Display Panel

NDC 72603-122-01

Topiramate Extended-Release Capsules

100 mg

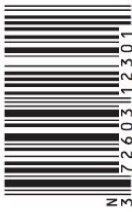
<p>Rx only</p> <p>NDC 72603-122-01</p> <p>Once-Daily Dosing</p> <p>Topiramate Extended-Release Capsules</p> <p>100 mg</p> <p>PHARMACIST: Dispense the Medication Guide provided separately to each patient.</p> <p>30 Capsules</p> <p>NORTHSTAR[®]</p>	<p>Each capsule contains: Topiramate, USP 100 mg. Recommended dosage: Administer dose once daily. See Prescribing Information. Keep out of reach of children. This package is child-resistant. Store in a tight container at 20°C to 25°C (68°F to 77°F); excursions permitted to 15°C to 30°C (59°F to 86°F) [see USP Controlled Room Temperature]. Protect from moisture. Medication Guide available at www.northstarrxllc.com/products or call 1-800-206-7821 Manufactured for: Northstar Rx LLC Memphis, TN 38141. Manufactured by: Glenmark Pharmaceuticals Limited Pithampur, Madhya Pradesh 454775, India Product of India 09/2022 MP/Drugs/25/9/2010 PE625650922-1</p> <p> N 3172603112201 5</p> <p>© 2005 Northstar Healthcare Holdings Ltd.</p>	<p>↓</p>
---	---	----------

Principle Display Panel

NDC 72603-123-01

Topiramate Extended-Release Capsules

150 mg

<p>Rx only</p> <p>NDC 72603-123-01</p> <p>Once-Daily Dosing</p> <p>Topiramate Extended-Release Capsules</p> <p>150 mg</p> <p>PHARMACIST: Dispense the Medication Guide provided separately to each patient.</p> <p>30 Capsules</p> <p>NORTHSTAR[®]</p>	<p>Each capsule contains: Topiramate, USP 150 mg. Recommended dosage: Administer dose once daily. See Prescribing Information. Keep out of reach of children. This package is child-resistant. Store in a tight container at 20°C to 25°C (68°F to 77°F); excursions permitted to 15°C to 30°C (59°F to 86°F) [see USP Controlled Room Temperature]. Protect from moisture. Medication Guide available at www.northstarrxllc.com/products or call 1-800-206-7821 Manufactured for: Northstar Rx LLC Memphis, TN 38141. Manufactured by: Glenmark Pharmaceuticals Limited Pithampur, Madhya Pradesh 454775, India Product of India 09/2022 MP/Drugs/25/9/2010 PE625660922-1</p> <p> N 3172603112301 2</p> <p>© 2005 Northstar Healthcare Holdings Ltd.</p>	<p>↓</p>
---	---	----------

Principle Display Panel

NDC 72603-124-01

Topiramate Extended-Release Capsules

200 mg

Rx only

NDC 72603-124-01

Once-Daily Dosing

**Topiramate
Extended-Release
Capsules**

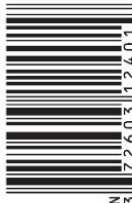
200 mg

PHARMACIST: Dispense the
Medication Guide provided
separately to each patient.

30 Capsules

NORTHSTAR[®]

Each capsule contains: Topiramate, USP 200 mg.
Recommended dosage: Administer dose once daily.
See Prescribing Information.
Keep out of reach of children.
This package is child-resistant.
Store in a tight container at 20°C to 25°C
(68°F to 77°F); excursions permitted to
15°C to 30°C (59°F to 86°F) [see USP
Controlled Room Temperature].
Protect from moisture.
Medication Guide available at
www.northstarrxllc.com/products
or call 1-800-206-7821
Manufactured for: Northstar Rx LLC
Memphis, TN 38141.
Manufactured by: Glenmark Pharmaceuticals Limited
Pithampur, Madhya Pradesh 454775, India
Product of India 09/2022
MP/Drugs/25/9/2010 PE625670922-1



© 2005 Northstar Healthcare Holdings Ltd.

TOPIRAMATE

topiramate capsule, extended release

Product Information

Product Type	HUMAN PRESCRIPTION DRUG	Item Code (Source)	NDC:72603-120
Route of Administration	ORAL		

Active Ingredient/Active Moiety

Ingredient Name	Basis of Strength	Strength
TOPIRAMATE (UNII: 0H73WJ391) (TOPIRAMATE - UNII:0H73WJ391)	TOPIRAMATE	25 mg

Inactive Ingredients

Ingredient Name	Strength
MICROCRYSTALLINE CELLULOSE (UNII: OP1R32D61U)	
HYPROMELLOSE 2910 (5 MPA.S) (UNII: R75537T0T4)	
ETHYLCELLULOSE (10 MPA.S) (UNII: 3DYK7UYZ62)	
POLYETHYLENE GLYCOL 6000 (UNII: 3OIQX730WE)	
TALC (UNII: 7SEV7J4R1U)	
TITANIUM DIOXIDE (UNII: 15FIX9V2JP)	
FERROSOFERRIC OXIDE (UNII: XM0M87F357)	
FERRIC OXIDE RED (UNII: 1K09F3G675)	
D&C RED NO. 30 (UNII: 2S42T2808B)	

FD&C RED NO. 40 (UNII: WZB9127XOA)	
POTASSIUM HYDROXIDE (UNII: WZH3C48M4T)	
PROPYLENE GLYCOL (UNII: 6DC9Q167V3)	
AMMONIA (UNII: 5138Q19F1X)	
SHELLAC (UNII: 46N107B71O)	

Product Characteristics

Color	PINK (flesh) , GRAY (light gray)	Score	no score
Shape	CAPSULE	Size	14mm
Flavor		Imprint Code	G;367
Contains			

Packaging

#	Item Code	Package Description	Marketing Start Date	Marketing End Date
1	NDC:72603-120-01	30 in 1 BOTTLE; Type 0: Not a Combination Product	01/01/2023	

Marketing Information

Marketing Category	Application Number or Monograph Citation	Marketing Start Date	Marketing End Date
ANDA	ANDA210278	01/01/2023	

TOPIRAMATE

topiramate capsule, extended release

Product Information

Product Type	HUMAN PRESCRIPTION DRUG	Item Code (Source)	NDC:72603-121
Route of Administration	ORAL		

Active Ingredient/Active Moiety

Ingredient Name	Basis of Strength	Strength
TOPIRAMATE (UNII: 0H73WJ391) (TOPIRAMATE - UNII:0H73WJ391)	TOPIRAMATE	50 mg

Inactive Ingredients

Ingredient Name	Strength
MICROCRYSTALLINE CELLULOSE (UNII: OP1R32D61U)	
HYPROMELLOSE 2910 (5 MPA.S) (UNII: R75537T0T4)	
ETHYLCELLULOSE (10 MPA.S) (UNII: 3DYK7UYZ62)	
POLYETHYLENE GLYCOL 6000 (UNII: 3OIQX730WE)	
TALC (UNII: 7SEV7J4R1U)	

TITANIUM DIOXIDE (UNII: 15FIX9V2JP)	
FERROSOFERRIC OXIDE (UNII: XM0M87F357)	
FERRIC OXIDE RED (UNII: 1K09F3G675)	
FERRIC OXIDE YELLOW (UNII: EX438O2MRT)	
D&C RED NO. 30 (UNII: 2S42T2808B)	
FD&C RED NO. 40 (UNII: WZB9127XOA)	
POTASSIUM HYDROXIDE (UNII: WZH3C48M4T)	
PROPYLENE GLYCOL (UNII: 6DC9Q167V3)	
AMMONIA (UNII: 5138Q19F1X)	
SHELLAC (UNII: 46N107B71O)	

Product Characteristics

Color	ORANGE (light orange) , GRAY (light gray)	Score	no score
Shape	CAPSULE	Size	16mm
Flavor		Imprint Code	G;368
Contains			

Packaging

#	Item Code	Package Description	Marketing Start Date	Marketing End Date
1	NDC:72603-121-01	30 in 1 BOTTLE; Type 0: Not a Combination Product	01/01/2023	

Marketing Information

Marketing Category	Application Number or Monograph Citation	Marketing Start Date	Marketing End Date
ANDA	ANDA210278	01/01/2023	

TOPIRAMATE

topiramate capsule, extended release

Product Information

Product Type	HUMAN PRESCRIPTION DRUG	Item Code (Source)	NDC:72603-122
Route of Administration	ORAL		

Active Ingredient/Active Moiety

Ingredient Name	Basis of Strength	Strength
TOPIRAMATE (UNII: 0H73WJJ391) (TOPIRAMATE - UNII:0H73WJJ391)	TOPIRAMATE	100 mg

Inactive Ingredients

Ingredient Name	Strength
-----------------	----------

MICROCRYSTALLINE CELLULOSE (UNII: OP1R32D61U)	
HYPROMELLOSE 2910 (5 MPA.S) (UNII: R75537T0T4)	
ETHYLCELLULOSE (10 MPA.S) (UNII: 3DYK7UYZ62)	
POLYETHYLENE GLYCOL 6000 (UNII: 30IQX730WE)	
TALC (UNII: 7SEV7J4R1U)	
TITANIUM DIOXIDE (UNII: 15FIX9V2JP)	
FERROSOFERRIC OXIDE (UNII: XM0M87F357)	
FERRIC OXIDE RED (UNII: 1K09F3G675)	
D&C RED NO. 30 (UNII: 2S42T2808B)	
FD&C RED NO. 40 (UNII: WZB9127XOA)	
POTASSIUM HYDROXIDE (UNII: WZH3C48M4T)	
PROPYLENE GLYCOL (UNII: 6DC9Q167V3)	
AMMONIA (UNII: 5138Q19F1X)	
SHELLAC (UNII: 46N107B71O)	

Product Characteristics

Color	ORANGE (reddish orange) , GRAY (light gray)	Score	no score
Shape	CAPSULE	Size	19mm
Flavor		Imprint Code	G;369
Contains			

Packaging

#	Item Code	Package Description	Marketing Start Date	Marketing End Date
1	NDC:72603-122-01	30 in 1 BOTTLE; Type 0: Not a Combination Product	01/01/2023	

Marketing Information

Marketing Category	Application Number or Monograph Citation	Marketing Start Date	Marketing End Date
ANDA	ANDA210278	01/01/2023	

TOPIRAMATE

topiramate capsule, extended release

Product Information

Product Type	HUMAN PRESCRIPTION DRUG	Item Code (Source)	NDC:72603-123
Route of Administration	ORAL		

Active Ingredient/Active Moiety

Ingredient Name	Basis of Strength	Strength
TOPIRAMATE (UNII: 0H73WJJ391) (TOPIRAMATE - UNII:0H73WJJ391)	TOPIRAMATE	150 mg

Inactive Ingredients	
Ingredient Name	Strength
MICROCRYSTALLINE CELLULOSE (UNII: OP1R32D61U)	
HYPROMELLOSE 2910 (5 MPA.S) (UNII: R75537T0T4)	
ETHYLCELLULOSE (10 MPA.S) (UNII: 3DYK7UYZ62)	
POLYETHYLENE GLYCOL 6000 (UNII: 3OIQX730WE)	
TALC (UNII: 7SEV7J4R1U)	
TITANIUM DIOXIDE (UNII: 15FIX9V2JP)	
FERROSOFERRIC OXIDE (UNII: XM0M87F357)	
D&C RED NO. 30 (UNII: 2S42T2808B)	
FD&C YELLOW NO. 5 (UNII: I753WB2F1M)	
FD&C RED NO. 40 (UNII: WZB9127XOA)	
POTASSIUM HYDROXIDE (UNII: WZH3C48M4T)	
PROPYLENE GLYCOL (UNII: 6DC9Q167V3)	
AMMONIA (UNII: 5138Q19F1X)	
SHELLAC (UNII: 46N107B71O)	

Product Characteristics			
Color	GRAY, GRAY (light gray)	Score	no score
Shape	CAPSULE	Size	21mm
Flavor		Imprint Code	G;370
Contains			

Packaging				
#	Item Code	Package Description	Marketing Start Date	Marketing End Date
1	NDC:72603-123-01	30 in 1 BOTTLE; Type 0: Not a Combination Product	01/01/2023	

Marketing Information			
Marketing Category	Application Number or Monograph Citation	Marketing Start Date	Marketing End Date
ANDA	ANDA210278	01/01/2023	

TOPIRAMATE

topiramate capsule, extended release

Product Information			
Product Type	HUMAN PRESCRIPTION DRUG	Item Code (Source)	NDC:72603-124
Route of Administration	ORAL		

Active Ingredient/Active Moiety				
Ingredient Name		Basis of Strength	Strength	
TOPIRAMATE (UNII: 0H73WJJ391) (TOPIRAMATE - UNII:0H73WJJ391)		TOPIRAMATE	200 mg	
Inactive Ingredients				
Ingredient Name			Strength	
MICROCRYSTALLINE CELLULOSE (UNII: OP1R32D61U)				
HYPROMELLOSE 2910 (5 MPA.S) (UNII: R75537T0T4)				
ETHYLCELLULOSE (10 MPA.S) (UNII: 3DYK7UYZ62)				
POLYETHYLENE GLYCOL 6000 (UNII: 3OIQX730WE)				
TALC (UNII: 7SEV7J4R1U)				
TITANIUM DIOXIDE (UNII: 15FIX9V2JP)				
FERROSOFERRIC OXIDE (UNII: XM0M87F357)				
FERRIC OXIDE RED (UNII: 1K09F3G675)				
FERRIC OXIDE YELLOW (UNII: EX438O2MRT)				
D&C RED NO. 30 (UNII: 2S42T2808B)				
FD&C RED NO. 40 (UNII: WZB9127XOA)				
POTASSIUM HYDROXIDE (UNII: WZH3C48M4T)				
PROPYLENE GLYCOL (UNII: 6DC9Q167V3)				
AMMONIA (UNII: 5138Q19F1X)				
SHELLAC (UNII: 46N107B71O)				
Product Characteristics				
Color	BROWN, GRAY (light gray)	Score	no score	
Shape	CAPSULE	Size	23mm	
Flavor		Imprint Code	G;371	
Contains				
Packaging				
#	Item Code	Package Description	Marketing Start Date	Marketing End Date
1	NDC:72603-124-01	30 in 1 BOTTLE; Type 0: Not a Combination Product	01/01/2023	
Marketing Information				
Marketing Category		Application Number or Monograph Citation	Marketing Start Date	Marketing End Date
ANDA		ANDA210278	01/01/2023	

Labeler - NorthStar RxLLC (830546433)

Establishment

Name	Address	ID/FEI	Business Operations
------	---------	--------	---------------------

Glenmark Pharmaceuticals Limited		862603186	ANALYSIS(72603-120, 72603-121, 72603-122, 72603-123, 72603-124) , MANUFACTURE(72603-120, 72603-121, 72603-122, 72603-123, 72603-124)
--	--	-----------	---

Revised: 3/2023

NorthStar RxLLC