

TUSSIN ADULT CHEST CONGESTION- guaifenesin syrup
CVS Pharmacy

Disclaimer: Most OTC drugs are not reviewed and approved by FDA, however they may be marketed if they comply with applicable regulations and policies. FDA has not evaluated whether this product complies.

CVS Pharmacy, Inc. Tus sin Adult Chest Congestion Drug Facts

Active ingredient (in each 10 mL)

Guaifenesin, USP 200 mg

Purpose

Expectorant

Use

helps loosen phlegm (mucus) and thin bronchial secretions to make coughs more productive

Warnings

Ask a doctor before use if you have

- cough that occurs with too much phlegm (mucus)
- cough that lasts or is chronic such as occurs with smoking, asthma, chronic bronchitis, or emphysema

Stop use and ask a doctor if

cough lasts for more than 7 days, comes back, or is accompanied by fever, rash, or persistent headache. A persistent cough may be a sign of a serious condition.

If pregnant or breast-feeding,

ask a health professional before use.

Keep out of reach of children.

In case of overdose, get medical help or contact a Poison Control Center right away. (1-800-222-1222)

Directions

- do not take more than 6 doses in any 24-hour period
- measure only with dosing cup provided
- keep dosing cup with product
- mL = milliliter
- this adult product is not intended for use in children under 12 years of age

age	dose
adults and children 12 years and over	10 – 20 mL every 4 hours
children under 12 years	do not use

Other information

- store at 20-25°C (68-77°F)

Inactive ingredients

anhydrous citric acid, caramel, FD&C red no. 40, flavor, glycerin, high fructose corn syrup, maltol, menthol, propylene glycol, purified water, saccharin sodium, sodium benzoate

Questions or comments?

1-800-719-9260

Principal Display Panel

Compare to the active ingredient in Robitussin® Mucus + Chest Congestion

TUSSIN

ADULT CHEST CONGESTION

(GUAIFENESIN, USP)

EXPECTORANT

Relieves:

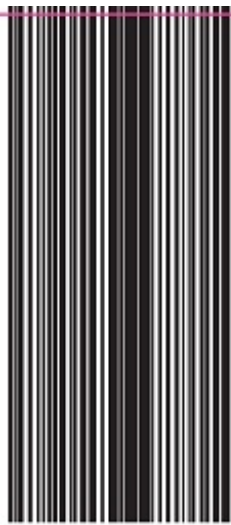
Chest Congestion/mucus

Alcohol free

NON-DROWSY

For ages 12 & over

8 FL OZ (237 mL)



CVS
pharmacy™

NDC 59779-650-34
Compare to the
active ingredient
in Robitussin®
Mucus + Chest
Congestion*

TUSSIN

ADULT CHEST CONGESTION

(GUAIFENESIN, USP)
EXPECTORANT

Relieves:

- **Chest congestion/
mucus**

Alcohol free

NON-DROWSY

For ages 12 & over

8 FL OZ (237 mL)

CVS
pharmacy™

TUSSIN

ADULT CHEST CONGESTION

(GUAIFENESIN, USP)
EXPECTORANT

**Choose the correct Tussin formula
for your symptoms**

TUSSIN

Chest congestion with dry cough

- Loosens chest congestion to help
coughs clear chest.

TUSSIN - DM

Frequent coughs & chest congestion

- Controls and suppresses coughing.
- Loosens and relieves chest
congestion/mucus.

TUSSIN - CF

**Nasal stuffiness & frequent
coughs & chest congestion**

- Clears nasal passages to restore freer
breathing through the nose.
- Controls and suppresses coughing.
- Relieves chest congestion/mucus.

LONG-ACTING TUSSIN

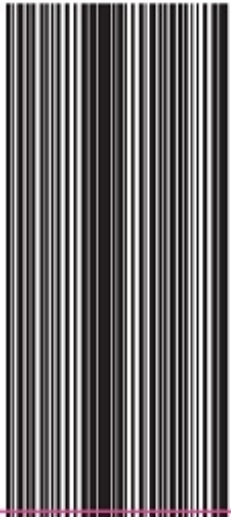
Frequent coughs

- Controls coughs 6-8 hours.



Dosage cup provided

Dosage cup provided



EXPECTORANT
(GUAIFENESIN, USP)

ADULT CHEST
CONGESTION

TUSSIN

Compare to the
active ingredient
in Robitussin[®]
Mucus + Chest
Congestion[™]



Drug Facts

Active ingredient **Purpose**
(in each 10 mL)

Guaifenesin, USP 200 mg.....Expectorant

Use helps loosen phlegm (mucus) and thin bronchial secretions to make coughs more productive

Warnings

Ask a doctor before use if you have

- cough that occurs with too much phlegm (mucus)
- cough that lasts or is chronic such as occurs with smoking, asthma, chronic bronchitis, or emphysema

Stop use and ask a doctor if cough lasts for more than 7 days, comes back, or is accompanied by fever, rash, or persistent headache. A persistent cough may be a sign of a serious condition.

If pregnant or breast-feeding, ask a health professional before use.

Keep out of reach of children. In case of overdose, get medical help or contact a Poison Control Center right away. (1-800-222-1222)

Directions

- do not take more than 6 doses in any 24-hour period
- measure only with dosing cup provided
- keep dosing cup with product
- mL = milliliter
- this adult product is not intended for use in children under 12 years of age

age	dose
adults and children 12 years and over	10 – 20 mL every 4 hours
children under 12 years	do not use

Other information

- store at 20-25°C (68-77°F)

Inactive ingredients anhydrous citric acid, caramel, FD&C red no. 40, flavor, glycerin, high fructose corn syrup, maltol, menthol, propylene glycol, purified water, saccharin sodium, sodium benzoate

Drug Facts (continued)

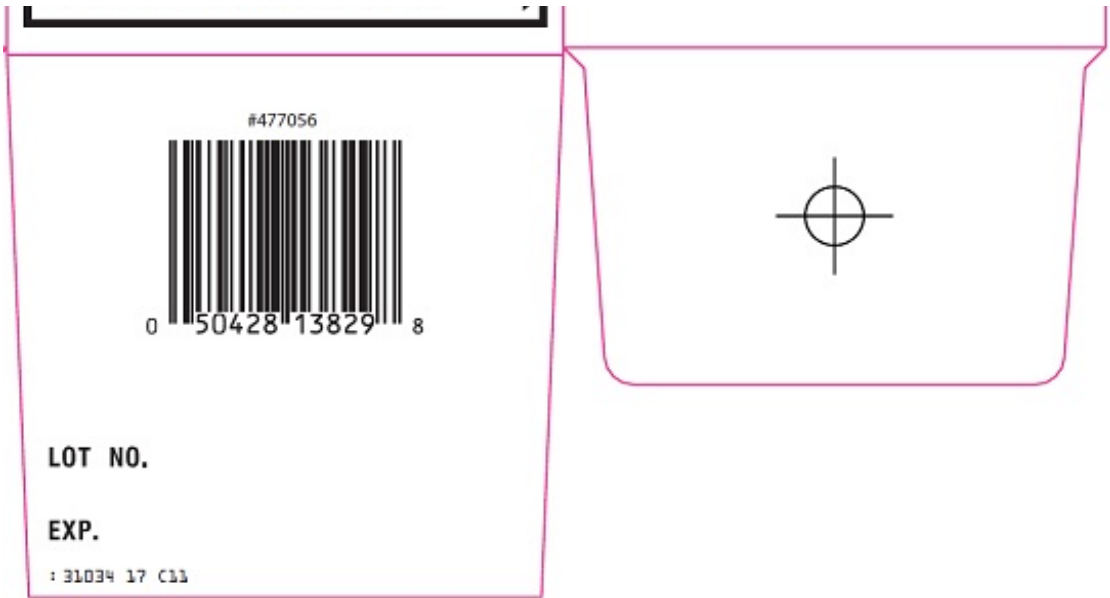
Questions or comments?
1-800-719-9260

DO NOT USE IF PRINTED NECKBAND IS BROKEN OR MISSING

*This product is not manufactured or distributed by Pfizer, distributor of Robitussin[®] Mucus + Chest Congestion.

Distributed by: CVS Pharmacy, Inc.
One CVS Drive, Woonsocket, RI 02895
© 2014 CVS/pharmacy
CVS.com[®] 1-800-SHOP CVS
V-16467





TUSSIN ADULT CHEST CONGESTION
guaifenesin syrup

Product Information			
Product Type	HUMAN OTC DRUG LABEL	Item Code (Source)	NDC:59779-650
Route of Administration	ORAL	DEA Schedule	

Active Ingredient/Active Moiety		
Ingredient Name	Basis of Strength	Strength
GUAIFENESIN (GUAIFENESIN)	GUAIFENESIN	200 mg in 10 mL

Inactive Ingredients	
Ingredient Name	Strength
ANHYDROUS CITRIC ACID	
CAMEL	
FD&C RED NO. 40	
GLYCERIN	
HIGH FRUCTOSE CORN SYRUP	
PROPYLENE GLYCOL	
WATER	
SODIUM BENZOATE	
MALTOL	
MENTHOL	
SACCHARIN SODIUM	

Product Characteristics			
Color	RED (dark)	Score	
Shape		Size	

Flavor	CHERRY	Imprint Code	
Contains			
Packaging			
#	Item Code	Package Description	Marketing Start Date
1	NDC:59779-650-26	1 in 1 CARTON	
1		118 mL in 1 BOTTLE	
2	NDC:59779-650-34	1 in 1 CARTON	
2		237 mL in 1 BOTTLE	
Marketing Information			
Marketing Category	Application Number or Monograph Citation	Marketing Start Date	Marketing End Date
OTC monograph final	part341	07/15/1987	

Labeler - CVS Pharmacy (062312574)

Revised: 8/2014

CVS Pharmacy