

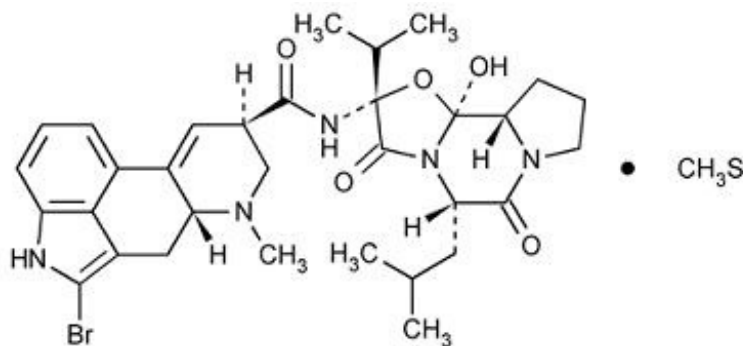
BROMOCRIPTINE MESYLATE- bromocriptine mesylate capsule
Cadila Healthcare Limited

Bromocriptine Mesylate Capsules, USP

DESCRIPTION

Bromocriptine mesylate is an ergot derivative with potent dopamine receptor agonist activity. Bromocriptine mesylate is chemically designated as Ergotaman-3',6',18-trione, 2-bromo-12'-hydroxy-2'-(1-methylethyl)-5'-(2-methylpropyl)-, (5'α)-mono-methanesulfonate (salt).

The structural formula is:



$C_{32}H_{40}BrN_5O_5 \cdot CH_4SO_3$ Mol. wt. 750.70

Bromocriptine mesylate, USP is white or slightly colored, fine crystalline powder and odorless or having a weak, characteristic odor.

Each bromocriptine mesylate capsule USP, 5 mg intended for oral administration contains bromocriptine mesylate equivalent to 5 mg of bromocriptine. In addition, each capsule contains the following inactive ingredients: colloidal silicon dioxide, D&C red # 28, FD&C blue # 1, FD&C yellow # 6, gelatin, lactose monohydrate, magnesium stearate, maleic acid and titanium dioxide. Each capsule is printed with black pharmaceutical ink.

CLINICAL PHARMACOLOGY

Bromocriptine mesylate is a dopamine receptor agonist, which activates post-synaptic dopamine receptors. The dopaminergic neurons in the tuberoinfundibular process modulate the secretion of prolactin from the anterior pituitary by secreting a prolactin inhibitory factor (thought to be dopamine); in the corpus striatum the dopaminergic neurons are involved in the control of motor function. Clinically, bromocriptine significantly reduces plasma levels of prolactin in patients with physiologically elevated prolactin as well as in patients with hyperprolactinemia. The inhibition of physiological lactation as well as galactorrhea in pathological hyperprolactinemic states is obtained at dose levels that do not affect secretion of other tropic hormones from the anterior pituitary. Experiments have demonstrated that bromocriptine induces long lasting stereotyped behavior in rodents and turning behavior in rats having unilateral lesions in the substantia nigra. These actions, characteristic of those produced by dopamine, are inhibited by dopamine antagonists and suggest a direct action of bromocriptine on striatal dopamine receptors.

Bromocriptine mesylate is a nonhormonal, nonestrogenic agent that inhibits the secretion of prolactin in humans, with little or no effect on other pituitary hormones, except in patients with acromegaly, where it

lowers elevated blood levels of growth hormone in the majority of patients.

Bromocriptine mesylate produces its therapeutic effect in the treatment of Parkinson's disease, a clinical condition characterized by a progressive deficiency in dopamine synthesis in the substantia nigra, by directly stimulating the dopamine receptors in the corpus striatum. In contrast, levodopa exerts its therapeutic effect only after conversion to dopamine by the neurons of the substantia nigra, which are known to be numerically diminished in this patient population.

Clinical Studies

In about 75% of cases of amenorrhea and galactorrhea, bromocriptine therapy suppresses the galactorrhea completely, or almost completely, and reinitiates normal ovulatory menstrual cycles.

Menses are usually reinitiated prior to complete suppression of galactorrhea; the time for this on average is 6-8 weeks. However, some patients respond within a few days, and others may take up to 8 months.

Galactorrhea may take longer to control depending on the degree of stimulation of the mammary tissue prior to therapy. At least a 75% reduction in secretion is usually observed after 8-12 weeks. Some patients may fail to respond even after 12 months of therapy.

In many acromegalic patients, bromocriptine produces a prompt and sustained reduction in circulating levels of serum growth hormone.

Pharmacokinetics:

Absorption

Following single dose administration of bromocriptine mesylate tablets, 2 x 2.5 mg to 5 healthy volunteers under fasted conditions, the mean peak plasma levels of bromocriptine, time to reach peak plasma concentrations and elimination half-life were 465 pg/mL \pm 226, 2.5 hrs \pm 2 and 4.85 hr, respectively.¹ Linear relationship was found between single doses of bromocriptine mesylate and C_{max} and AUC in the dose range of 1 to 7.5 mg.² The pharmacokinetics of bromocriptine metabolites have not been reported.

Food did not significantly affect the systemic exposure of bromocriptine following administration of bromocriptine mesylate tablets, 2.5 mg.³ It is recommended that bromocriptine mesylate be taken with food because of the high percentage of subjects who vomit upon receiving bromocriptine under fasting conditions.

Following bromocriptine mesylate 5 mg administered twice daily for 14 days, the bromocriptine C_{max} and AUC at steady state were 628 \pm 375 pg/mL and 2377 \pm 1186 pg*hr/mL, respectively.⁴

Distribution

In vitro experiments showed that bromocriptine was 90% to 96% bound to serum albumin.

Metabolism

Bromocriptine undergoes extensive first-pass biotransformation, reflected by complex metabolite profiles and by almost complete absence of parent drug in urine and feces.

In vitro studies using human liver microsomes showed that bromocriptine has a high affinity for CYP3A and hydroxylations at the proline ring of the cyclopeptide moiety constituted a main metabolic pathway.⁵ Inhibitors and/or potent substrates for CYP3A4 might therefore inhibit the clearance of bromocriptine and lead to increased levels. (see **PRECAUTIONS, drug interactions** section). The participation of other major CYP enzymes such as 2D6, 2C8, and 2C19 on the metabolism of bromocriptine has not been evaluated. Bromocriptine is also an inhibitor of CYP3A4 with a calculated IC₅₀ value of 1.69 μ M.⁶ Given the low therapeutic concentrations of bromocriptine in patients (C_{max} =0.82 nM), a significant alteration of the metabolism of a second drug whose clearance is mediated by CYP3A4 should not be expected. The potential effect of bromocriptine and its metabolites to act as inducers of CYP enzymes

has not been reported.

Excretion

About 82% and 5.6 % of the radioactive dose orally administered was recovered in feces and urine, respectively. Bromolysergic acid and bromoisolysergic acid accounted for half of the radioactivity in urine.⁵

Special Populations

Effect of Renal Impairment

The effect of renal function on the pharmacokinetics of bromocriptine has not been evaluated.

Since parent drug and metabolites are almost completely excreted via metabolism, and only 6% eliminated via the kidney, renal impairment may not have a significant impact on the PK of bromocriptine and its metabolites (see **PRECAUTIONS, general**).

Effect of Liver Impairment

The effect of liver impairment on the PK of bromocriptine mesylate and its metabolites has not been evaluated. Since bromocriptine mesylate is mainly eliminated by metabolism, liver impairment may increase the plasma levels of bromocriptine, therefore, caution may be necessary (see **PRECAUTIONS, general**).

The effect of age, race, and gender on the pharmacokinetics of bromocriptine and its metabolites has not been evaluated.

¹ Nelson, M. et. al. (1990). Pharmacokinetic evaluation of erythromycin and caffeine administered with bromocriptine. Clin Pharmacol Ther; 47(6):694-7.

² Schran, H.F., Bhuta, S.I., Schwartz, et al. (1980). The pharmacokinetics of bromocriptine in man. In: Golstein, M. Calne, D.B., et. Al (eds). Ergot compound and brain function: Neuroendocrine and neuropsychiatric aspects, pp. 125-139, New York, Rave Press.

³ Kopitar, Z., Vrhovac, B., Povsic, L., Plavsic, F., Francetic, I., Urbancic, J. (1991). The effect of food and metoclopramide on the pharmacokinetics and side effects of bromocriptine. Eur J Drug Metab Pharmacokinet; 16(3):177-81

⁴ Flogstad, A.K., Halse, J., Grass, P., Abisch, E., Djoseand, O., Kutz, K., Bodd, E., and Jervell, J., (1994). A comparison of octreotide, bromocriptine, or a combination of both drugs in acromegaly. Journal of Clinical Endocrinology & Metabolism; Vol 79, 461-465

⁵ Peyronneau MA, Delaforge M, Riviere R et al. 1994. High affinity of ergopeptides for CYP P450 3A. Importance of their peptide moiety for P450 recognition and hydroxylation of bromocriptine. Eur J Biochem 223:947-56.

⁶ Wynalda, M.A., Wienkers, L.C. (1997). Assessment of potential interactions between dopamine receptor agonists and various human cytochrome P450 enzymes using a simple in vitro inhibition screen. Drug Metab Dispos; 25:1211-14.

INDICATIONS AND USAGE

Hyperprolactinemia-Associated Dysfunctions:

Bromocriptine mesylate tablets and capsules are indicated for the treatment of dysfunctions associated with **hyperprolactinemia** including **amenorrhea** with or without **galactorrhea**, **infertility or hypogonadism**. Bromocriptine treatment is indicated in patients with **prolactin-secreting adenomas**, which may be the basic underlying endocrinopathy contributing to the above clinical presentations.

Reduction in tumor size has been demonstrated in both male and female patients with macroadenomas.

In cases where adenectomy is elected, a course of bromocriptine mesylate tablets and/or capsules therapy may be used to reduce the tumor mass prior to surgery.

Acromegaly:

Bromocriptine mesylate tablets and capsules therapy is indicated in the treatment of acromegaly. Bromocriptine therapy, alone or as adjunctive therapy with pituitary irradiation or surgery, reduces serum growth hormone by 50% or more in approximately ½ of patients treated, although not usually to normal levels.

Since the effects of external pituitary radiation may not become maximal for several years, adjunctive therapy with bromocriptine offers potential benefit before the effects of irradiation are manifested.

Parkinson's Disease:

Bromocriptine mesylate tablets or capsules are indicated in the treatment of the signs and symptoms of idiopathic or postencephalitic Parkinson's disease. As adjunctive treatment to levodopa (alone or with a peripheral decarboxylase inhibitor), bromocriptine therapy may provide additional therapeutic benefits in those patients who are currently maintained on optimal dosages of levodopa, those who are beginning to deteriorate (develop tolerance) to levodopa therapy, and those who are experiencing "end of dose failure" on levodopa therapy. Bromocriptine therapy may permit a reduction of the maintenance dose of levodopa and, thus may ameliorate the occurrence and/or severity of adverse reactions associated with long-term levodopa therapy such as abnormal involuntary movements (e.g., dyskinesias) and the marked swings in motor function ("on-off" phenomenon). Continued efficacy of bromocriptine therapy during treatment of more than 2 years has not been established.

Data are insufficient to evaluate potential benefit from treating newly diagnosed Parkinson's disease with bromocriptine. Studies have shown, however, significantly more adverse reactions (notably nausea, hallucinations, confusion and hypotension) in bromocriptine-treated patients than in levodopa/carbidopa treated patients. Patients unresponsive to levodopa are poor candidates for bromocriptine therapy.

CONTRAINDICATIONS

Hypersensitivity to bromocriptine or to any of the excipients of bromocriptine mesylate capsules, uncontrolled hypertension and sensitivity to any ergot alkaloids. In patients being treated for hyperprolactinemia, bromocriptine mesylate tablets and capsules should be withdrawn when pregnancy is diagnosed (see **PRECAUTIONS, Hyperprolactinemic States**). In the event that bromocriptine is reinstated to control a rapidly expanding macroadenoma (see **PRECAUTIONS, Hyperprolactinemic States**) and a patient experiences a hypertensive disorder of pregnancy, the benefit of continuing bromocriptine must be weighed against the possible risk of its use during a hypertensive disorder of pregnancy. When bromocriptine is being used to treat acromegaly, prolactinoma, or Parkinson's disease in patients who subsequently become pregnant, a decision should be made as to whether the therapy continues to be medically necessary or can be withdrawn. If it is continued, the drug should be withdrawn in those who may experience hypertensive disorders of pregnancy (including eclampsia, preeclampsia, or pregnancy-induced hypertension) unless withdrawal of bromocriptine is considered to be medically contraindicated.

The drug should not be used during the post-partum period in women with a history of coronary artery disease and other severe cardiovascular conditions unless withdrawal is considered medically contraindicated. If the drug is used in the post-partum period the patient should be observed with caution.

WARNINGS

Since hyperprolactinemia with amenorrhea/galactorrhea and infertility has been found in patients with

pituitary tumors, a complete evaluation of the pituitary is indicated before treatment with bromocriptine mesylate.

If pregnancy occurs during bromocriptine administration, careful observation of these patients is mandatory. Prolactin-secreting adenomas may expand and compression of the optic or other cranial nerves may occur, emergency pituitary surgery becoming necessary. In most cases, the compression resolves following delivery. Reinitiation of bromocriptine treatment has been reported to produce improvement in the visual fields of patients in whom nerve compression has occurred during pregnancy. The safety of bromocriptine treatment during pregnancy to the mother and fetus has not been established.

Bromocriptine mesylate has been associated with somnolence, and episodes of sudden sleep onset, particularly in patients with Parkinson's disease. Sudden onset of sleep during daily activities, in some cases without awareness or warning signs, has been reported. Patients must be informed of this and advised not to drive or operate machines during treatment with bromocriptine. Patients who have experienced somnolence and/or an episode of sudden sleep onset must not drive or operate machines. Furthermore, a reduction of dosage or termination of therapy may be considered.

Symptomatic hypotension can occur in patients treated with bromocriptine for any indication. In post-partum studies with bromocriptine, decreases in supine systolic and diastolic pressures of greater than 20 mm and 10 mm Hg, respectively, have been observed in almost 30% of patients receiving bromocriptine. On occasion, the drop in supine systolic pressure was as much as 50-59 mm of Hg.

Since, especially during the first days of treatment, hypotensive reactions may occasionally occur and result in reduced alertness, particular care should be exercised when driving a vehicle or operating machinery.

While hypotension during the start of therapy with bromocriptine occurs in some patients, in rare cases serious adverse events, including hypertension, myocardial infarction, seizures, stroke, have been reported in postpartum women treated with bromocriptine mesylate. Hypertension have been reported, sometimes at the initiation of therapy, but often developing in the second week of therapy; seizures have also been reported both with and without the prior development of hypertension; stroke have been reported mostly in post-partum patients whose prenatal and obstetric courses had been uncomplicated. Many of these patients experiencing seizures (including cases of status epilepticus) and/or strokes reported developing a constant and often progressively severe headache hours to days prior to the acute event. Some cases of strokes and seizures were also preceded by visual disturbances (blurred vision, and transient cortical blindness). Cases of acute myocardial infarction have also been reported.

Although a causal relationship between bromocriptine administration and hypertension, seizures, strokes, and myocardial infarction in post-partum women has not been established, use of the drug in patients with uncontrolled hypertension is not recommended. In patients being treated for hyperprolactinemia bromocriptine should be withdrawn when pregnancy is diagnosed (see PRECAUTIONS, Hyperprolactinemic States). In the event that bromocriptine is reinstated to control a rapidly expanding macroadenoma (see PRECAUTIONS, Hyperprolactinemic States) and a patient experiences a hypertensive disorder of pregnancy, the benefit of continuing bromocriptine must be weighed against the possible risk of its use during a hypertensive disorder of pregnancy. When bromocriptine is being used to treat acromegaly or Parkinson's disease in patients who subsequently become pregnant, a decision should be made as to whether the therapy continues to be medically necessary or can be withdrawn. If it is continued, the drug should be withdrawn in those who may experience hypertensive disorders of pregnancy (including eclampsia, preeclampsia, or pregnancy-induced hypertension) unless withdrawal of bromocriptine is considered to be medically contraindicated. Because of the possibility of an interaction between bromocriptine and other ergot alkaloids, the concomitant use of these medications is not recommended. Periodic monitoring of the blood pressure, particularly during the first weeks of therapy is prudent. If hypertension, severe, progressive, or unremitting headache (with or without visual disturbance), or evidence of CNS toxicity develops, drug therapy should be discontinued and the patient should be evaluated promptly. Particular

attention should be paid to patients who have recently been treated or are on concomitant therapy with drugs that can alter blood pressure. Their concomitant use in the puerperium is not recommended.

Among patients on bromocriptine mesylate, particularly on long-term and high-dose treatment, pleural and pericardial effusions, as well as pleural and pulmonary fibrosis and constrictive pericarditis, have been reported. Patients with unexplained pleuropulmonary disorders should be examined thoroughly and discontinuation of bromocriptine mesylate therapy should be considered. In those instances in which bromocriptine treatment was terminated, the changes slowly reverted towards normal.

In a few patients on bromocriptine mesylate, particularly on long-term and high-dose treatment, retroperitoneal fibrosis has been reported. To ensure recognition of retroperitoneal fibrosis at an early reversible stage it is recommended that its manifestations (e.g., back pain, edema of the lower limbs, impaired kidney function) should be watched in this category of patients. Bromocriptine mesylate medication should be withdrawn if fibrotic changes in the retroperitoneum are diagnosed or suspected.

PRECAUTIONS

General:

Safety and efficacy of bromocriptine have not been established in patients with renal or hepatic disease. Care should be exercised when administering bromocriptine mesylate therapy concomitantly with other medications known to lower blood pressure.

The drug should be used with caution in patients with a history of psychosis or cardiovascular disease. If acromegalic patients or patients with prolactinoma or Parkinson's disease are being treated with bromocriptine during pregnancy, they should be cautiously observed, particularly during the post-partum period if they have a history of cardiovascular disease.

Patients with rare hereditary problems of galactose intolerance, severe lactase deficiency or glucose-galactose malabsorption should not take this medicine.

Hyperprolactinemic States:

Visual field impairment is a known complication of macroprolactinoma. Effective treatment with bromocriptine leads to a reduction in hyperprolactinemia and often to a resolution of the visual impairment. In some patients, however, a secondary deterioration of visual fields may subsequently develop despite normalized prolactin levels and tumor shrinkage, which may result from traction on the optic chiasm which is pulled down into the now partially empty sella. In these cases the visual field defect may improve on reduction of bromocriptine dosage while there is some elevation of prolactin and some tumor re-expansion. Monitoring of visual fields in patients with macroprolactinoma is therefore recommended for an early recognition of secondary field loss due to chiasmal herniation and adaptation of drug dosage.

The relative efficacy of bromocriptine versus surgery in preserving visual fields is not known. Patients with rapidly progressive visual field loss should be evaluated by a neurosurgeon to help decide on the most appropriate therapy.

Since pregnancy is often the therapeutic objective in many hyperprolactinemic patients presenting with amenorrhea/galactorrhea and hypogonadism (infertility), a careful assessment of the pituitary is essential to detect the presence of a prolactin-secreting adenoma. Patients not seeking pregnancy, or those harboring large adenomas, should be advised to use contraceptive measures, other than oral contraceptives, during treatment with bromocriptine. Since pregnancy may occur prior to reinitiation of menses, a pregnancy test is recommended at least every 4 weeks during the amenorrheic period, and, once menses are reinitiated, every time a patient misses a menstrual period. Treatment with bromocriptine mesylate tablets or capsules should be discontinued as soon as pregnancy has been established. Patients must be monitored closely throughout pregnancy for signs and symptoms that may signal the enlargement of a previously undetected or existing prolactin-secreting tumor. Discontinuation

of bromocriptine treatment in patients with known macroadenomas has been associated with rapid regrowth of tumor and increase in serum prolactin in most cases.

Cerebrospinal fluid rhinorrhea has been observed in some patients with prolactin-secreting adenomas treated with bromocriptine mesylate.

Acromegaly:

Cold sensitive digital vasospasm has been observed in some acromegalic patients treated with bromocriptine. The response, should it occur, can be reversed by reducing the dose of bromocriptine and may be prevented by keeping the fingers warm. Cases of severe gastrointestinal bleeding from peptic ulcers have been reported, some fatal. Although there is no evidence that bromocriptine increases the incidence of peptic ulcers in acromegalic patients, symptoms suggestive of peptic ulcer should be investigated thoroughly and treated appropriately. Patients with a history of peptic ulcer or gastrointestinal bleeding should be observed carefully during treatment with bromocriptine.

Possible tumor expansion while receiving bromocriptine therapy has been reported in a few patients. Since the natural history of growth hormone secreting tumors is unknown, all patients should be carefully monitored and, if evidence of tumor expansion develops, discontinuation of treatment and alternative procedures considered.

Parkinson's Disease:

Safety during long-term use for more than 2 years at the doses required for parkinsonism has not been established.

As with any chronic therapy, periodic evaluation of hepatic, hematopoietic, cardiovascular, and renal function is recommended. Symptomatic hypotension can occur and, therefore, caution should be exercised when treating patients receiving antihypertensive drugs.

High doses of bromocriptine may be associated with confusion and mental disturbances. Since parkinsonian patients may manifest mild degrees of dementia, caution should be used when treating such patients.

Bromocriptine administered alone or concomitantly with levodopa may cause hallucinations (visual or auditory). Hallucinations usually resolve with dosage reduction; occasionally, discontinuation of bromocriptine is required. Rarely, after high doses, hallucinations have persisted for several weeks following discontinuation of bromocriptine.

Postmarketing reports suggest that patients treated with anti-Parkinson medications can experience intense urges to gamble, increased sexual urges, intense urges to spend money uncontrollably, and other intense urges. Patients may be unable to control these urges while taking one or more of the medications that are generally used for the treatment of Parkinson's disease and that increase central dopaminergic tone, including bromocriptine mesylate. In some cases, although not all, these urges were reported to have stopped when the dose was reduced or the medication was discontinued. Because patients may not recognize these behaviors as abnormal it is important for prescribers to specifically ask patients or their caregivers about the development of new or increased gambling urges, sexual urges, uncontrolled spending or other urges while being treated with bromocriptine mesylate. Physicians should consider dose reduction or stopping the medication if a patient develops such urges while taking bromocriptine mesylate.

As with levodopa, caution should be exercised when administering bromocriptine to patients with a history of myocardial infarction who have a residual atrial, nodal, or ventricular arrhythmia.

Retroperitoneal fibrosis has been reported in a few patients receiving long-term therapy (2-10 years) with bromocriptine mesylate in doses ranging from 30-140 mg daily.

Epidemiological studies have shown that patients with Parkinson's disease have a higher risk (2-approximately 6-fold higher) of developing melanoma than the general population. Whether the

increased risk observed was due to Parkinson's disease or other factors, such as drugs used to treat Parkinson's disease, is unclear. For the reasons stated above, patients and providers are advised to monitor for melanomas frequently and on a regular basis when using bromocriptine mesylate for any indication. Ideally, periodic skin examinations should be performed by appropriately qualified individuals (e.g. dermatologists).

Discontinuation of bromocriptine mesylate should be undertaken gradually whenever possible, even if the patient is to remain on L-dopa. A symptom complex resembling the neuroleptic malignant syndrome (characterized by elevated temperature, muscular rigidity, altered consciousness, and autonomic instability), with no other obvious etiology, has been reported in association with rapid dose reduction, withdrawal of, or changes in antiparkinsonian therapy.

Information for Patients :

During clinical trials, dizziness, drowsiness, faintness, fainting, and syncope have been reported early in the course of bromocriptine therapy. In post-marketing reports, bromocriptine has been associated with somnolence, and episodes of sudden sleep onset, particularly in patients with Parkinson's disease. Sudden onset of sleep during daily activities, in some cases without awareness or warning signs, has been reported very rarely. All patients receiving bromocriptine should be cautioned with regard to engaging in activities requiring rapid and precise responses, such as driving an automobile or operating machinery. Patients being treated with bromocriptine mesylate and presenting with somnolence and/or sudden sleep episodes must be advised not to drive or engage in activities where impaired alertness may put themselves or others at risk of serious injury or death (e.g., operating machines).

Patients receiving bromocriptine for hyperprolactinemic states associated with macroadenoma or those who have had previous transsphenoidal surgery, should be told to report any persistent watery nasal discharge to their physician. Patients receiving bromocriptine for treatment of a macroadenoma should be told that discontinuation of drug may be associated with rapid regrowth of the tumor and recurrence of their original symptoms.

Patients and their caregivers should be alerted to the possibility that they may experience intense urges to spend money uncontrollably, intense urges to gamble, increased sexual urges and other intense urges and the inability to control these urges while taking bromocriptine mesylate. [See Precautions].

Especially during the first days of treatment, hypotensive reactions may occasionally occur and result in reduced alertness, particular care should be exercised when driving a vehicle or operating machinery.

Drug Interactions:

The risk of using bromocriptine in combination with other drugs has not been systematically evaluated, but alcohol may potentiate the side effects of bromocriptine. Bromocriptine may interact with dopamine antagonists, butyrophenones, and certain other agents. Compounds in these categories result in a decreased efficacy of bromocriptine: phenothiazines, haloperidol, metoclopramide, pimozide. Bromocriptine is a substrate of CYP3A4. Caution should therefore be used when coadministering drugs which are strong inhibitors of this enzyme (such as azole antimycotics, HIV protease inhibitors). The concomitant use of macrolide antibiotics such as erythromycin was shown to increase the plasma levels of bromocriptine (mean AUC and C_{max} values increased 3.7-fold and 4.6-fold, respectively).¹ The concomitant treatment of acromegalic patients with bromocriptine and octreotide led to increased plasma levels of bromocriptine (bromocriptine AUC increased about 38%).⁴ Concomitant use of bromocriptine mesylate with other ergot alkaloids is not recommended. Dose adjustment may be necessary in those cases where high doses of bromocriptine are being used (such as Parkinson's disease indication).

Carcinogenesis, Mutagenesis, Impairment of Fertility:

A 74-week study was conducted in mice using dietary levels of bromocriptine mesylate equivalent to oral doses of 10 and 50 mg/kg/day. A 100-week study in rats was conducted using dietary levels equivalent to oral doses of 1.7, 9.8, and 44 mg/kg/day. The highest doses tested in mice and rats were

approximately 2.5 and 4.4 times, respectively, the maximum human dose administered in controlled clinical trials (100 mg/day) based on body surface area. Malignant uterine tumors, endometrial and myometrial, were found in rats as follows: 0/50 control females, 2/50 females given 1.7 mg/kg daily, 7/49 females given 9.8 mg/kg daily, and 9/50 females given 44 mg/kg daily. The occurrence of these neoplasms is probably attributable to the high estrogen/progesterone ratio which occurs in rats as a result of the prolactin-inhibiting action of bromocriptine mesylate. The endocrine mechanisms believed to be involved in the rats are not present in humans. There is no known correlation between uterine malignancies occurring in bromocriptine-treated rats and human risk. In contrast to the findings in rats, the uteri from mice killed after 74 weeks of treatment did not exhibit evidence of drug-related changes.

Bromocriptine mesylate was evaluated for mutagenic potential in the battery of tests that included Ames bacterial mutation assay, mutagenic activity *in vitro* on V79 Chinese hamster fibroblasts, cytogenetic analysis of Chinese hamster bone marrow cells following *in vivo* treatment, and an *in vivo* micronucleus test for mutagenic potential in mice.

No mutagenic effects were obtained in any of these tests.

Fertility and reproductive performance in female rats were not influenced adversely by treatment with bromocriptine beyond the predicted decrease in the weight of pups due to suppression of lactation. In males treated with 50 mg/kg of this drug, mating and fertility were within the normal range. Increased perinatal loss was produced in the subgroups of dams, sacrificed on day 21 post-partum (p.p.) after mating with males treated with the highest dose (50 mg/kg).

Pregnancy:

Category B:

Administration of 10-30 mg/kg of bromocriptine to 2 strains of rats on days 6-15 post coitum (p.c.) as well as a single dose of 10 mg/kg on day 5 p.c. interfered with nidation. Three mg/kg given on days 6-15 were without effect on nidation, and did not produce any anomalies. In animals treated from day 8-15 p.c., i.e., after implantation, 30 mg/kg produced increased prenatal mortality in the form of increased incidence of embryonic resorption. One anomaly, aplasia of spinal vertebrae and ribs, was found in the group of 262 fetuses derived from the dams treated with 30 mg/kg bromocriptine. No fetotoxic effects were found in offspring of dams treated during the peri- or post-natal period.

Two studies were conducted in rabbits (2 strains) to determine the potential to interfere with nidation. Dose levels of 100 or 300 mg/kg/day from day 1 to day 6 p.c. did not adversely affect nidation. The high dose was approximately 63 times the maximum human dose administered in controlled clinical trials (100 mg/day), based on body surface area. In New Zealand white rabbits some embryo mortality occurred at 300 mg/kg which was a reflection of overt maternal toxicity. Three studies were conducted in 2 strains of rabbits to determine the teratological potential of bromocriptine at dose levels of 3, 10, 30, 100, and 300 mg/kg given from day 6 to day 18 p.c. In 2 studies with the Yellow-silver strain, cleft palate was found in 3 and 2 fetuses at maternally toxic doses of 100 and 300 mg/kg, respectively. One control fetus also exhibited this anomaly. In the third study conducted with New Zealand white rabbits using an identical protocol, no cleft palates were produced.

No teratological or embryo-toxic effects of bromocriptine were produced in any of 6 offspring from 6 monkeys at a dose level of 2 mg/kg.

Information concerning 1276 pregnancies in women taking bromocriptine has been collected. In the majority of cases, bromocriptine was discontinued within 8 weeks into pregnancy (mean 28.7 days), however, 8 patients received the drug continuously throughout pregnancy. The mean daily dose for all patients was 5.8 mg (range 1-40 mg).

Of these 1276 pregnancies, there were 1088 full term deliveries (4 stillborn), 145 spontaneous abortions (11.4%), and 28 induced abortions (2.2%). Moreover, 12 extrauterine gravidities and 3 hydatidiform moles (twice in the same patient) caused early termination of pregnancy. These data compare favorably with the abortion rate (11%-25%) cited for pregnancies induced by clomiphene

citrate, menopausal gonadotropin, and chorionic gonadotropin.

Although spontaneous abortions often go unreported, especially prior to 20 weeks of gestation, their frequency has been estimated to be 15%.

The incidence of birth defects in the population at large ranges from 2%-4.5%. The incidence in 1109 live births from patients receiving bromocriptine is 3.3%.

There is no suggestion that bromocriptine contributed to the type or incidence of birth defects in this group of infants.

Nursing Mothers:

Bromocriptine should not be used during lactation in post-partum women.

Pediatric Use:

The safety and effectiveness of bromocriptine for the treatment of prolactin-secreting pituitary adenomas have been established in patients age 16 to adult. No data are available for bromocriptine use in pediatric patients under the age of 8 years. A single 8-year old patient treated with bromocriptine for a prolactin-secreting pituitary macroadenoma has been reported without therapeutic response.

The use of bromocriptine for the treatment of prolactin-secreting adenomas in pediatric patients in the age group 11 to under 16 years is supported by evidence from well-controlled trials in adults, with additional data in a limited number (n=14) of children and adolescents 11 to 15 years of age with prolactin-secreting pituitary macro- and microadenomas who have been treated with bromocriptine. Of the 14 reported patients, 9 had successful outcomes, 3 partial responses, and 2 failed to respond to bromocriptine treatment. Chronic hypopituitarism complicated macroadenoma treatment in 5 of the responders, both in patients receiving bromocriptine alone and in those who received bromocriptine in combination with surgical treatment and/or pituitary irradiation.

Safety and effectiveness of bromocriptine in pediatric patients have not been established for any other indication listed in the **INDICATIONS AND USAGE** section.

Geriatric Use:

Clinical studies for bromocriptine did not include sufficient numbers of subjects aged 65 and over to determine whether the elderly respond differently from younger subjects. However, other reported clinical experiences, including post-marketing reporting of adverse events, have not identified differences in response or tolerability between elderly and younger patients. Even though no variation in efficacy or adverse reaction profile in geriatric patients taking bromocriptine has been observed, greater sensitivity of some elderly individuals cannot be categorically ruled out. In general, dose selection for an elderly patient should be cautious, starting at the lower end of the dose range, reflecting the greater frequency of decreased hepatic, renal or cardiac function, and of concomitant disease or other drug therapy in this population.

ADVERSE REACTIONS

Hyperprolactinemic Indications:

Adverse Reactions from Clinical Trials

The incidence of adverse effects is quite high (69%) but these are generally mild to moderate in degree. Therapy was discontinued in approximately 5% of patients because of adverse effects. These in decreasing order of frequency are: nausea (49%), headache (19%), dizziness (17%), fatigue (7%), lightheadedness (5%), vomiting (5%), abdominal cramps (4%), nasal congestion (3%), constipation (3%), diarrhea (3%) and drowsiness (3%).

A slight hypotensive effect may accompany bromocriptine mesylate treatment. The occurrence of

adverse reactions may be lessened by temporarily reducing dosage to ½ a bromocriptine mesylate tablet 2 or 3 times daily. A few cases of cerebrospinal fluid rhinorrhea have been reported in patients receiving bromocriptine for treatment of large prolactinomas. This has occurred rarely, usually only in patients who have received previous transsphenoidal surgery, pituitary radiation, or both, and who were receiving bromocriptine for tumor recurrence. It may also occur in previously untreated patients whose tumor extends into the sphenoid sinus.

Acromegaly:

The most frequent adverse reactions encountered in acromegalic patients treated with bromocriptine were: nausea (18%), constipation (14%), postural/ orthostatic hypotension (6%), anorexia (4%), dry mouth/nasal stuffiness (4%), indigestion/dyspepsia (4%), digital vasospasm (3%), drowsiness/tiredness (3%) and vomiting (2%).

Less frequent adverse reactions (less than 2%) were: gastrointestinal bleeding, dizziness, exacerbation of Raynaud's Syndrome, headache and syncope. Rarely (less than 1%) hair loss, alcohol potentiation, faintness, lightheadedness, arrhythmia, ventricular tachycardia, decreased sleep requirement, visual hallucinations, lassitude, shortness of breath, bradycardia, vertigo, paresthesia, sluggishness, vasovagal attack, delusional psychosis, paranoia, insomnia, heavy headedness, reduced tolerance to cold, tingling of ears, facial pallor and muscle cramps have been reported.

Parkinson's Disease:

In clinical trials in which bromocriptine was administered with concomitant reduction in the dose of levodopa/carbidopa, the most common newly appearing adverse reactions were: nausea, abnormal involuntary movements, hallucinations, confusion, "on-off" phenomenon, dizziness, drowsiness, faintness/ fainting, vomiting, asthenia, abdominal discomfort, visual disturbance, ataxia, insomnia, depression, hypotension, shortness of breath, constipation, and vertigo.

Less common adverse reactions which may be encountered include: anorexia, anxiety, blepharospasm, dry mouth, dysphagia, edema of the feet and ankles, erythromelalgia, epileptiform seizure, fatigue, headache, lethargy, mottling of skin, nasal stuffiness, nervousness, nightmares, paresthesia, skin rash, urinary frequency, urinary incontinence, urinary retention, and rarely, signs and symptoms of ergotism such as tingling of fingers, cold feet, numbness, muscle cramps of feet and legs or exacerbation of Raynaud's Syndrome.

Abnormalities in laboratory tests may include elevations in blood urea nitrogen, SGOT, SGPT, GGPT, CPK, alkaline phosphatase and uric acid, which are usually transient and not of clinical significance.

Adverse Reactions from Postmarketing Experience

The following adverse reactions have been reported during postapproval use of bromocriptine mesylate (All Indications Combined). Because adverse reactions from spontaneous reports are reported voluntarily from a population of uncertain size, it is generally not possible to reliably estimate their frequency or establish a causal relationship to drug exposure.

Psychiatric disorders

Confusion, psychomotor agitation/excitation, hallucinations, psychotic disorders, insomnia, libido increase, hypersexuality.

Nervous system disorders

Headache, drowsiness, dizziness, dyskinesia, somnolence, paraesthesia, excess daytime somnolence, sudden onset of sleep.

Eye disorders

Visual disturbance, vision blurred.

Ear and labyrinth disorders

Tinnitus.

Cardiac disorders

Pericardial effusion, constrictive pericarditis, tachycardia, bradycardia, arrhythmia, cardiac valve fibrosis.

Vascular disorders

Hypotension, orthostatic hypotension (very rarely leading to syncope), reversible pallor of fingers and toes induced by cold (especially in patients with history of Raynaud's phenomenon)

Respiratory, thoracic and mediastinal disorders

Nasal congestion, pleural effusion, pleural fibrosis, pleurisy, pulmonary fibrosis, dyspnoea.

Gastrointestinal disorders

Nausea, constipation, vomiting, dry mouth, diarrhoea, abdominal pain, retroperitoneal fibrosis, gastrointestinal ulcer, gastrointestinal haemorrhage.

Skin and subcutaneous tissue disorders

Allergic skin reactions, hair loss.

Musculoskeletal and connective tissue disorders

Leg cramps.

General disorders and administration site conditions

Fatigue, peripheral edema, a syndrome resembling Neuroleptic Malignant Syndrome on abrupt withdrawal of bromocriptine mesylate (See **Precautions**).

Adverse Events Observed in Other Conditions:

Post-partum Patients: (see above Warnings)

In post-partum studies with bromocriptine 23 percent of post-partum patients treated had at least 1 side effect, but they were generally mild to moderate in degree. Therapy was discontinued in approximately 3% of patients. The most frequently occurring adverse reactions were: headache (10%), dizziness (8%), nausea (7%), vomiting (3%), fatigue (1.0%), syncope (0.7%), diarrhea (0.4%) and cramps (0.4%). Decreases in blood pressure (≥ 20 mm Hg systolic and ≥ 10 mm Hg diastolic) occurred in 28% of patients at least once during the first 3 post-partum days; these were usually of a transient nature. Reports of fainting in the puerperium may possibly be related to this effect. In post-marketing experience in the U.S. serious adverse reactions reported include 72 cases of seizures (including 4 cases of status epilepticus), 30 cases of stroke, and 9 cases of myocardial infarction among post-partum patients. Seizure cases were not necessarily accompanied by the development of hypertension. An unremitting and often progressively severe headache, sometimes accompanied by visual disturbance, often preceded by hours to days many cases of seizure and/or stroke. Most patients had shown no evidence of any of the hypertensive disorders of pregnancy including eclampsia, preeclampsia or pregnancy induced hypertension. One stroke case was associated with sagittal sinus thrombosis, and another was associated with cerebral and cerebellar vasculitis. One case of myocardial infarction was associated with unexplained disseminated intravascular coagulation and a second occurred in conjunction with use of another ergot alkaloid. The relationship of these adverse reactions to bromocriptine administration has not been established.

In rare cases serious adverse events, including hypertension, myocardial infarction, seizures, stroke, or psychic disorders have been reported in postpartum women treated with bromocriptine mesylate. In some patients the development of seizures or stroke was preceded by severe headache and/or transient visual disturbances. Although the causal relationship of these events to the drug is uncertain, periodic monitoring of blood pressure is advisable in postpartum women receiving bromocriptine mesylate. If

hypertension, severe, progressive, or unremitting headache (with or without visual disturbances), or evidence of CNS toxicity develop, the administration of bromocriptine mesylate should be discontinued and the patient should be evaluated promptly.

Particular caution is required in patients who have recently been treated or are on concomitant therapy with drugs that can alter blood pressure, e.g. vasoconstrictors such as sympathomimetics or ergot alkaloids including ergometrine or methylergometrine and their concomitant use in the puerperium is not recommended.

OVERDOSAGE

The most commonly reported signs and symptoms associated with acute bromocriptine mesylate overdose are: nausea, vomiting, constipation, diaphoresis, dizziness, pallor, severe hypotension, malaise, confusion, lethargy, drowsiness, delusions, hallucinations, and repetitive yawning. The lethal dose has not been established and the drug has a very wide margin of safety. However, one death occurred in a patient who committed suicide with an unknown quantity of bromocriptine and chloroquine.

Treatment of overdose consists of removal of the drug by emesis (if conscious), gastric lavage, activated charcoal, or saline catharsis. Careful supervision and recording of fluid intake and output is essential. Hypotension should be treated by placing the patient in the Trendelenburg position and administering I.V. fluids. If satisfactory relief of hypotension cannot be achieved by using the above measures to their fullest extent, vasopressors should be considered.

There have been isolated reports of children who accidentally ingested bromocriptine mesylate. Vomiting, somnolence and fever were reported as adverse events. Patients recovered either spontaneously within a few hours or after appropriate management.

DOSAGE AND ADMINISTRATION

General:

It is recommended that bromocriptine mesylate tablets and capsules be taken with food. Patients should be evaluated frequently during dose escalation to determine the lowest dosage that produces a therapeutic response.

Hyperprolactinemic Indications:

The initial dosage of bromocriptine mesylate tablets in adults is ½ to one 2½ mg scored tablet daily. An additional 2½ mg tablet may be added to the treatment regimen as tolerated every 2-7 days until an optimal therapeutic response is achieved. The therapeutic dosage ranged from 2.5-15 mg daily in adults studied clinically.

Based on limited data in children of age 11 to 15, (see **Pediatric Use** subsection) the initial dose is ½ to one 2½ mg scored tablet daily. Dosing may need to be increased as tolerated until a therapeutic response is achieved. The therapeutic dosage ranged from 2.5-10 mg daily in children with prolactin-secreting pituitary adenomas.

In order to reduce the likelihood of prolonged exposure to bromocriptine mesylate tablets or capsules should an unsuspected pregnancy occur, a mechanical contraceptive should be used in conjunction with bromocriptine therapy until normal ovulatory menstrual cycles have been restored. Contraception may then be discontinued in patients desiring pregnancy.

Thereafter, if menstruation does not occur within 3 days of the expected date, bromocriptine therapy should be discontinued and a pregnancy test performed.

Acromegaly:

Virtually all acromegalic patients receiving therapeutic benefit from bromocriptine mesylate tablets and capsules also have reductions in circulating levels of growth hormone. Therefore, periodic assessment of circulating levels of growth hormone will, in most cases, serve as a guide in determining the therapeutic potential of bromocriptine. If, after a brief trial with bromocriptine therapy, no significant reduction in growth hormone levels has taken place, careful assessment of the clinical features of the disease should be made, and if no change has occurred, dosage adjustment or discontinuation of therapy should be considered.

The initial recommended dosage is $\frac{1}{2}$ to one $2\frac{1}{2}$ mg bromocriptine mesylate tablet on retiring (with food) for 3 days. An additional $\frac{1}{2}$ to 1 bromocriptine mesylate tablet should be added to the treatment regimen as tolerated every 3-7 days until the patient obtains optimal therapeutic benefit. Patients should be reevaluated monthly and the dosage adjusted based on reductions of growth hormone or clinical response. The usual optimal therapeutic dosage range of bromocriptine mesylate tablets and capsules varies from 20-30 mg/day in most patients. The maximal dosage should not exceed 100 mg/day.

Patients treated with pituitary irradiation should be withdrawn from bromocriptine therapy on a yearly basis to assess both the clinical effects of radiation on the disease process as well as the effects of bromocriptine therapy. Usually a 4-8 week withdrawal period is adequate for this purpose. Recurrence of the signs/symptoms or increases in growth hormone indicate the disease process is still active and further courses of bromocriptine should be considered.

Parkinson's Disease:

The basic principle of bromocriptine mesylate therapy is to initiate treatment at a low dosage and, on an individual basis, increase the daily dosage slowly until a maximum therapeutic response is achieved. The dosage of levodopa during this introductory period should be maintained, if possible. The initial dose of bromocriptine is $\frac{1}{2}$ of a $2\frac{1}{2}$ mg tablet twice daily with meals. Assessments are advised at 2-week intervals during dosage titration to ensure that the lowest dosage producing an optimal therapeutic response is not exceeded. If necessary, the dosage may be increased every 14-28 days by $2\frac{1}{2}$ mg/day with meals. Should it be advisable to reduce the dosage of levodopa because of adverse reactions, the daily dosage of bromocriptine, if increased, should be accomplished gradually in small ($2\frac{1}{2}$ mg) increments.

The safety of bromocriptine mesylate tablets and capsules has not been demonstrated in dosages exceeding 100 mg/day.

HOW SUPPLIED

Bromocriptine Mesylate Capsules USP, 5 mg are white to off-white powder filled in size "3" empty hard gelatin capsules with tan colored cap printed with "ZA 17" in black ink and white colored body printed with "5 mg" in black ink and are supplied as follows:

NDC 65841-654-06 in bottle of 30 capsules

NDC 65841-654-01 in bottle of 100 capsules

Storage:

Store at 20° to 25°C (68° to 77° F) [See USP Controlled Room Temperature]; in tight, light-resistant container.

Dispense in a tight, light-resistant container.

Call your doctor for medical advice about side effects. You may report side effects to FDA at 1-800-FDA-1088.

Manufactured by:

Cadila Healthcare Ltd.

Ahmedabad, India

Rev.: 12/12

Revision Date: 2012/12/04

PACKAGE LABEL.PRINCIPAL DISPLAY PANEL

NDC 65841-654-01 in bottle of 100 Capsules

Bromocriptine Mesylate Capsules USP, 5 mg

R_x only

100 Capsules

ZYDUS

5 N
65841654011

ZyGenerics
NDC 65841-654-01
**BROMOCRIPTINE
MESYLATE**
Capsules, USP
5 mg*
Rx only
100 Capsules

Lot:
Exp:
Rev.: 04/11

*Each capsule contains:
Bromocriptine mesylate, USP
equivalent to bromocriptine5 mg

Usual Dosage: See package insert for
complete prescribing information.

Store at 20° to 25°C (68° to 77°F) [See
USP Controlled Room Temperature];
in tight, light-resistant container.

Dispense in a tight, light-resistant
container.

**KEEP THIS AND ALL DRUGS OUT
OF THE REACH OF CHILDREN.**

Manufactured by:
Cadila Healthcare Ltd.
Ahmedabad, India

BROMOCRIPTINE MESYLATE

bromocriptine mesylate capsule

Product Information

Product Type	HUMAN PRESCRIPTION DRUG LABEL	Item Code (Source)	NDC:65841-654
Route of Administration	ORAL	DEA Schedule	

Active Ingredient/Active Moiety

Ingredient Name	Basis of Strength	Strength
BROMOCRIPTINE MESYLATE (BROMOCRIPTINE)	BROMOCRIPTINE	5 mg

Inactive Ingredients

Ingredient Name	Strength
------------------------	-----------------

D&C RED NO. 28	
FD&C BLUE NO. 1	
FD&C YELLOW NO. 6	
LACTOSE MONOHYDRATE	
MAGNESIUM STEARATE	
MALEIC ACID	
SILICON DIOXIDE	
GELATIN	
TITANIUM DIOXIDE	

Product Characteristics

Color	BROWN (TAN) , WHITE (WHITE)	Score	no score
Shape	CAPSULE (CAPSULE)	Size	16mm
Flavor		Imprint Code	ZA17;5mg
Contains			

Packaging

#	Item Code	Package Description	Marketing Start Date	Marketing End Date
1	NDC:65841-654-06	30 in 1 BOTTLE		
2	NDC:65841-654-01	100 in 1 BOTTLE		

Marketing Information

Marketing Category	Application Number or Monograph Citation	Marketing Start Date	Marketing End Date
ANDA	ANDA078899	01/23/2009	

Labeler - Cadila Healthcare Limited (918596198)

Registrant - Cadila Healthcare Limited (918596198)

Establishment

Name	Address	ID/FEI	Business Operations
Cadila Healthcare Limited		918596198	Analysis(65841-654), Manufacture(65841-654)