

# **DORZOLAMIDE HCL- dorzolamide hydrochloride solution/ drops**

## **Bausch & Lomb Incorporated**

-----

### **HIGHLIGHTS OF PRESCRIBING INFORMATION**

**These highlights do not include all the information needed to use Dorzolamide HCl Ophthalmic Solution safely and effectively. See full prescribing information for Dorzolamide HCl Ophthalmic Solution.**

#### **Dorzolamide Hydrochloride Ophthalmic Solution 2%**

**Initial U.S. Approval: 1994**

#### ----- **INDICATIONS AND USAGE** -----

Dorzolamide HCl Ophthalmic Solution is a carbonic anhydrase inhibitor indicated in the treatment of elevated intraocular pressure in patients with ocular hypertension or open-angle glaucoma. (1)

#### ----- **DOSAGE AND ADMINISTRATION** -----

The dose is one drop of Dorzolamide HCl Ophthalmic Solution in the affected eye(s) three times daily. Dorzolamide HCl Ophthalmic Solution may be used concomitantly with other topical ophthalmic drug products to lower intraocular pressure. (2)

#### ----- **DOSAGE FORMS AND STRENGTHS** -----

Solution containing 20 mg/mL dorzolamide. (3)

#### ----- **CONTRAINDICATIONS** -----

Dorzolamide HCl Ophthalmic Solution is contraindicated in patients who are hypersensitive to any component of this product. (4, 5.1)

#### ----- **WARNINGS AND PRECAUTIONS** -----

- Sulfonamide Hypersensitivity (5.1)
- Bacterial Keratitis (5.2)
- Corneal Endothelium (5.3)
- Allergic Reactions (5.4)
- Acute Angle-Closure Glaucoma (5.5)

#### ----- **ADVERSE REACTIONS** -----

The most frequently reported adverse reactions associated with Dorzolamide HCl Ophthalmic Solution were ocular burning, stinging, or discomfort immediately following ocular administration (approximately one-third of patients). Approximately one-quarter of patients noted a bitter taste following administration. Superficial punctate keratitis occurred in 10 to 15% of patients and signs and symptoms of ocular allergic reaction in approximately 10%. (6)

**To report SUSPECTED ADVERSE REACTIONS, contact Bausch & Lomb Incorporated at 1-800-323-0000 or FDA at 1-800-FDA-1088 or [www.fda.gov/medwatch](http://www.fda.gov/medwatch).**

#### ----- **DRUG INTERACTIONS** -----

- Potential additive effect of oral carbonic anhydrase inhibitor with Dorzolamide HCl Ophthalmic Solution. (7.1)
- Potential acid-base and electrolyte disturbances. (7.2)

**See 17 for PATIENT COUNSELING INFORMATION.**

**Revised: 8/2014**

---

### **FULL PRESCRIBING INFORMATION: CONTENTS\***

#### **1 INDICATIONS AND USAGE**

#### **2 DOSAGE AND ADMINISTRATION**

#### **3 DOSAGE FORMS AND STRENGTHS**

#### **4 CONTRAINDICATIONS**

#### **5 WARNINGS AND PRECAUTIONS**

5.1 Sulfonamide Hypersensitivity

5.2 Bacterial Keratitis

- 5.3 Corneal Endothelium
- 5.4 Allergic Reactions
- 5.5 Acute Angle-Closure Glaucoma

## **6 ADVERSE REACTIONS**

- 6.1 Clinical Studies Experience
- 6.2 Post-Marketing Experience

## **7 DRUG INTERACTIONS**

- 7.1 Oral Carbonic Anhydrase Inhibitors
- 7.2 High-Dose Salicylate Therapy

## **8 USE IN SPECIFIC POPULATIONS**

- 8.1 Pregnancy
- 8.3 Nursing Mothers
- 8.4 Pediatric Use
- 8.5 Geriatric Use
- 8.6 Renal and Hepatic Impairment

## **10 OVERDOSAGE**

## **11 DESCRIPTION**

## **12 CLINICAL PHARMACOLOGY**

- 12.1 Mechanism of Action
- 12.3 Pharmacokinetics

## **13 NONCLINICAL TOXICOLOGY**

- 13.1 Carcinogenesis, Mutagenesis, Impairment of Fertility

## **14 CLINICAL STUDIES**

## **16 HOW SUPPLIED/STORAGE AND HANDLING**

## **17 PATIENT COUNSELING INFORMATION**

- 17.1 Sulfonamide Reactions
- 17.2 Intercurrent Ocular Conditions
- 17.3 Handling Ophthalmic Solutions
- 17.4 Concomitant Topical Ocular Therapy
- 17.5 Contact Lens Use
- 17.6 Patient Instructions

\* Sections or subsections omitted from the full prescribing information are not listed.

---

## **FULL PRESCRIBING INFORMATION**

### **1 INDICATIONS AND USAGE**

Dorzolamide HCl Ophthalmic Solution is indicated in the treatment of elevated intraocular pressure in patients with ocular hypertension or open-angle glaucoma.

### **2 DOSAGE AND ADMINISTRATION**

The dose is one drop of Dorzolamide HCl Ophthalmic Solution in the affected eye(s) three times daily. Dorzolamide HCl Ophthalmic Solution may be used concomitantly with other topical ophthalmic drug products to lower intraocular pressure. If more than one topical ophthalmic drug is being used, the drugs should be administered at least five minutes apart.

### **3 DOSAGE FORMS AND STRENGTHS**

Solution containing 20 mg/mL dorzolamide (22.3 mg of dorzolamide hydrochloride USP).

## **4 CONTRAINDICATIONS**

Dorzolamide HCl Ophthalmic Solution is contraindicated in patients who are hypersensitive to any component of this product [see *Warnings and Precautions (5.1)*].

## **5 WARNINGS AND PRECAUTIONS**

### **5.1 Sulfonamide Hypersensitivity**

Dorzolamide HCl Ophthalmic Solution contains dorzolamide, a sulfonamide; and although administered topically, it is absorbed systemically. Therefore, the same types of adverse reactions that are attributable to sulfonamides may occur with topical administration of Dorzolamide HCl Ophthalmic Solution. Fatalities have occurred, although rarely, due to severe reactions to sulfonamides including Stevens-Johnson syndrome, toxic epidermal necrolysis, fulminant hepatic necrosis, agranulocytosis, aplastic anemia, and other blood dyscrasias. Sensitization may recur when a sulfonamide is readministered irrespective of the route of administration. If signs of serious reactions or hypersensitivity occur, discontinue the use of this preparation [see *Contraindications (4) and Patient Counseling Information (17.3)*].

### **5.2 Bacterial Keratitis**

There have been reports of bacterial keratitis associated with the use of multiple-dose containers of topical ophthalmic products. These containers had been inadvertently contaminated by patients who, in most cases, had a concurrent corneal disease or a disruption of the ocular epithelial surface.

### **5.3 Corneal Endothelium**

Carbonic anhydrase activity has been observed in both the cytoplasm and around the plasma membranes of the corneal endothelium. There is an increased potential for developing corneal edema in patients with low endothelial cell counts. Caution should be used when prescribing Dorzolamide HCl Ophthalmic Solution to this group of patients.

### **5.4 Allergic Reactions**

In clinical studies, local ocular adverse effects, primarily conjunctivitis and lid reactions, were reported with chronic administration of Dorzolamide HCl Ophthalmic Solution. Many of these reactions had the clinical appearance and course of an allergic-type reaction that resolved upon discontinuation of drug therapy. If such reactions are observed, Dorzolamide HCl Ophthalmic Solution should be discontinued and the patient evaluated before considering restarting the drug [see *Adverse Reactions (6)*].

### **5.5 Acute Angle-Closure Glaucoma**

The management of patients with acute angle-closure glaucoma requires therapeutic interventions in addition to ocular hypotensive agents.

## **6 ADVERSE REACTIONS**

### **6.1 Clinical Studies Experience**

Because clinical trials are conducted under widely varying conditions, adverse reaction rates observed in the clinical trials of a drug cannot be directly compared to rates in the clinical trials of another drug and may not reflect the rates observed in practice.

*Controlled clinical trials:* The most frequent adverse reactions associated with Dorzolamide HCl Ophthalmic Solution were ocular burning, stinging, or discomfort immediately following ocular

administration (approximately one-third of patients). Approximately one-quarter of patients noted a bitter taste following administration. Superficial punctate keratitis occurred in 10 to 15% of patients and signs and symptoms of ocular allergic reaction in approximately 10%. Reactions occurring in approximately 1 to 5% of patients were conjunctivitis and lid reactions [see *Warnings and Precautions (5.5)*], blurred vision, eye redness, tearing, dryness, and photophobia. Other ocular reactions and systemic reactions were reported infrequently, including headache, nausea, asthenia/fatigue; and, rarely, skin rashes, urolithiasis, and iridocyclitis.

In a 3-month, double-masked, active-treatment-controlled, multicenter study in pediatric patients, the adverse reactions profile of Dorzolamide HCl Ophthalmic Solution was comparable to that seen in adult patients.

## **6.2 Post-Marketing Experience**

The following adverse reactions have been identified during post-approval use of Dorzolamide HCl Ophthalmic Solution. Because these reactions are reported voluntarily from a population of uncertain size, it is not always possible to reliably estimate their frequency or establish a causal relationship to drug exposure: signs and symptoms of systemic allergic reactions including angioedema, bronchospasm, pruritus, and urticaria; Stevens-Johnson syndrome and toxic epidermal necrolysis; dizziness, paresthesia; ocular pain, transient myopia, choroidal detachment following filtration surgery, eyelid crusting; dyspnea; contact dermatitis, epistaxis, dry mouth and throat irritation.

## **7 DRUG INTERACTIONS**

### **7.1 Oral Carbonic Anhydrase Inhibitors**

There is a potential for an additive effect on the known systemic effects of carbonic anhydrase inhibition in patients receiving an oral carbonic anhydrase inhibitor and Dorzolamide HCl Ophthalmic Solution. The concomitant administration of Dorzolamide HCl Ophthalmic Solution and oral carbonic anhydrase inhibitors is not recommended.

### **7.2 High-Dose Salicylate Therapy**

Although acid-base and electrolyte disturbances were not reported in the clinical trials with dorzolamide hydrochloride ophthalmic solution, these disturbances have been reported with oral carbonic anhydrase inhibitors and have, in some instances, resulted in drug interactions (e.g., toxicity associated with high-dose salicylate therapy). Therefore, the potential for such drug interactions should be considered in patients receiving Dorzolamide HCl Ophthalmic Solution.

## **8 USE IN SPECIFIC POPULATIONS**

### **8.1 Pregnancy**

*Teratogenic Effects.*

#### **Pregnancy Category C**

Developmental toxicity studies with dorzolamide hydrochloride in rabbits at oral doses of  $\geq 2.5$  mg/kg/day revealed malformations of the vertebral bodies. These malformations occurred at doses that caused metabolic acidosis with decreased body weight gain in dams and decreased fetal weights. No treatment-related malformations were seen at 1 mg/kg/day. These doses represent estimated plasma  $C_{max}$  levels in rabbits, 37 and 15 times higher than the lower limit of detection in human plasma following ocular administration, respectively.

There are no adequate and well-controlled studies in pregnant women. Dorzolamide HCl Ophthalmic Solution should be used during pregnancy only if the potential benefit justifies the potential risk to the

fetus.

### 8.3 Nursing Mothers

In a study of dorzolamide hydrochloride in lactating rats, decreases in body weight gain of 5 to 7% in offspring at an oral dose of 7.5 mg/kg/day were seen during lactation. A slight delay in postnatal development (incisor eruption, vaginal canalization and eye openings), secondary to lower fetal body weight, was noted. This dose represents an estimated plasma  $C_{max}$  level in rats, 52 times higher than the lower limit of detection in human plasma following ocular administration.

It is not known whether this drug is excreted in human milk. Because many drugs are excreted in human milk and because of the potential for serious adverse reactions in nursing infants from Dorzolamide HCl Ophthalmic Solution, a decision should be made whether to discontinue nursing or to discontinue the drug, taking into account the importance of the drug to the mother.

### 8.4 Pediatric Use

Safety and effectiveness of Dorzolamide HCl Ophthalmic Solution have been demonstrated in pediatric patients in a 3-month, multicenter, double-masked, active-treatment-controlled trial.

### 8.5 Geriatric Use

No overall differences in safety or effectiveness have been observed between elderly and younger patients.

### 8.6 Renal and Hepatic Impairment

Dorzolamide has not been studied in patients with severe renal impairment ( $CrCl < 30$  mL/min). Because dorzolamide and its metabolite are excreted in predominantly by the kidney, Dorzolamide HCl Ophthalmic Solution is not recommended in such patients.

Dorzolamide has not been studied in patients with hepatic impairment and should therefore be used with caution in such patients.

## 10 OVERDOSAGE

Electrolyte imbalance, development of an acidotic state, and possible central nervous system effects may occur. Serum electrolyte levels (particularly potassium) and blood pH levels should be monitored.

## 11 DESCRIPTION

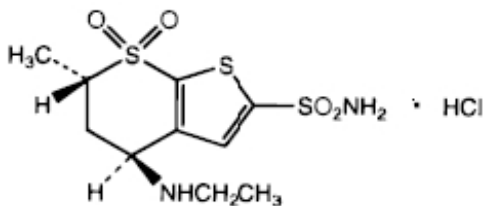
Dorzolamide HCl Ophthalmic Solution is a carbonic anhydrase inhibitor formulated for topical ophthalmic use.

Dorzolamide hydrochloride USP is described chemically as: (4*S-trans*)-4-(ethylamino)-5,6-dihydro-6-methyl-4*H*-thieno[2,3-*b*]thiopyran-2-sulfonamide 7,7-dioxide monohydrochloride. Dorzolamide hydrochloride is optically active. The specific rotation is

$$\alpha \quad 25^{\circ} \quad (C=1, \text{ water}) = \sim -17^{\circ}.$$

405nM

Its empirical formula is  $C_{10}H_{16}N_2O_4S_3 \cdot HCl$  and its structural formula is:



Dorzolamide hydrochloride USP has a molecular weight of 360.9 and a melting point of about 264°C. It is a white to off-white, crystalline powder, which is soluble in water and slightly soluble in methanol and ethanol.

Dorzolamide HCl Sterile Ophthalmic Solution is supplied as a sterile, isotonic, buffered, slightly viscous, aqueous solution of dorzolamide hydrochloride USP. The pH of the solution is approximately 5.6, and the osmolarity is 260-330 mOsM. Each mL of Dorzolamide HCl Ophthalmic Solution 2% contains 20 mg dorzolamide (22.3 mg of dorzolamide hydrochloride USP). Inactive ingredients are hydroxyethyl cellulose, mannitol, sodium citrate dihydrate, sodium hydroxide (to adjust pH) and water for injection. Benzalkonium chloride 0.0075% is added as a preservative.

## 12 CLINICAL PHARMACOLOGY

### 12.1 Mechanism of Action

Carbonic anhydrase (CA) is an enzyme found in many tissues of the body including the eye. It catalyzes the reversible reaction involving the hydration of carbon dioxide and the dehydration of carbonic acid. In humans, carbonic anhydrase exists as a number of isoenzymes, the most active being carbonic anhydrase II (CA-II), found primarily in red blood cells (RBCs), but also in other tissues. Inhibition of carbonic anhydrase in the ciliary processes of the eye decreases aqueous humor secretion, presumably by slowing the formation of bicarbonate ions with subsequent reduction in sodium and fluid transport. The result is a reduction in intraocular pressure (IOP).

Dorzolamide HCl Ophthalmic Solution contains dorzolamide hydrochloride, an inhibitor of human carbonic anhydrase II. Following topical ocular administration, Dorzolamide HCl Ophthalmic Solution reduces elevated intraocular pressure. Elevated intraocular pressure is a major risk factor in the pathogenesis of optic nerve damage and glaucomatous visual field loss.

### 12.3 Pharmacokinetics

When topically applied, dorzolamide reaches the systemic circulation. To assess the potential for systemic carbonic anhydrase inhibition following topical administration, drug and metabolite concentrations in RBCs and plasma and carbonic anhydrase inhibition in RBCs were measured.

Dorzolamide accumulates in RBCs during chronic dosing as a result of binding to CA-II. The parent drug forms a single N-desethyl metabolite, which inhibits CA-II less potently than the parent drug but also inhibits CA-I. The metabolite also accumulates in RBCs where it binds primarily to CA-I. Plasma concentrations of dorzolamide and metabolite are generally below the assay limit of quantitation (15nM). Dorzolamide binds moderately to plasma proteins (approximately 33%).

Dorzolamide is primarily excreted unchanged in the urine; the metabolite also is excreted in urine. After dosing is stopped, dorzolamide washes out of RBCs nonlinearly, resulting in a rapid decline of drug concentration initially, followed by a slower elimination phase with a half-life of about four months.

To simulate the systemic exposure after long-term topical ocular administration, dorzolamide was given orally to eight healthy subjects for up to 20 weeks. The oral dose of 2 mg twice daily closely approximates the amount of drug delivered by topical ocular administration of dorzolamide 2% three times daily. Steady state was reached within 8 weeks. The inhibition of CA-II and total carbonic anhydrase activities was below the degree of inhibition anticipated to be necessary for a

pharmacological effect on renal function and respiration in healthy individuals.

## 13 NONCLINICAL TOXICOLOGY

### 13.1 Carcinogenesis, Mutagenesis, Impairment of Fertility

In a two-year study of dorzolamide hydrochloride administered orally to male and female Sprague-Dawley rats, urinary bladder papillomas were seen in male rats in the highest dosage group of 20 mg/kg/day. Papillomas were not seen in rats given oral doses of 1 mg/kg/day. These doses represent estimated plasma  $C_{max}$  levels in rats, 138 and 7 times higher than the lower limit of detection in human plasma following ocular administration, respectively.

No treatment-related tumors were seen in a 21-month study in female and male mice given oral doses up to 75 mg/kg/day. This dose represents an estimated plasma  $C_{max}$  level in mice, 582 times higher than the lower limit of detection in human plasma following ocular administration.

The increased incidence of urinary bladder papillomas seen in the high-dose male rats is a class-effect of carbonic anhydrase inhibitors in rats. Rats are particularly prone to developing papillomas in response to foreign bodies, compounds causing crystalluria, and diverse sodium salts.

No changes in bladder urothelium were seen in dogs given oral dorzolamide hydrochloride for one year at 2 mg/kg/day or monkeys dosed topically to the eye for one year. An oral dose of 2 mg/kg/day in dogs represents an estimated plasma  $C_{max}$  level, 137 times higher than the lower limit of detection in human plasma following ocular administration. The topical ophthalmic dose in monkeys was approximately equivalent to the human topical ophthalmic dose.

The following tests for mutagenic potential were negative: (1) *in vivo* (mouse) cytogenetic assay; (2) *in vitro* chromosomal aberration assay; (3) alkaline elution assay; (4) V-79 assay; and (5) Ames test.

In reproduction studies of dorzolamide hydrochloride in rats, there were no adverse effects on the reproductive capacity of males or females at doses of 15 and 7.5 mg/kg/day, respectively. These doses represent estimated plasma  $C_{max}$  levels in rats, 104 and 52 times higher than the lower limit of detection in human plasma following ocular administration, respectively.

## 14 CLINICAL STUDIES

The efficacy of Dorzolamide HCl Ophthalmic Solution was demonstrated in clinical studies in the treatment of elevated intraocular pressure in patients with glaucoma or ocular hypertension (baseline IOP  $\geq$  23 mmHg). The IOP-lowering effect of Dorzolamide HCl Ophthalmic Solution was approximately 3 to 5 mmHg throughout the day and this was consistent in clinical studies of up to one year duration.

The efficacy of Dorzolamide HCl Ophthalmic Solution when dosed less frequently than three times a day (alone or in combination with other products) has not been established.

In a one year clinical study, the effect of Dorzolamide HCl Ophthalmic Solution 2% three times daily on the corneal endothelium was compared to that of betaxolol ophthalmic solution twice daily and timolol maleate ophthalmic solution 0.5% twice daily. There were no statistically significant differences between groups in corneal endothelial cell counts or in corneal thickness measurements. There was a mean loss of approximately 4% in the endothelial cell counts for each group over the one year period.

## 16 HOW SUPPLIED/STORAGE AND HANDLING

Dorzolamide HCl Ophthalmic Solution is supplied sterile in a white low density polyethylene (LDPE) bottle with a controlled drop tip and an orange polypropylene cap in the following sizes:

**NDC 24208-485-05, 5 mL, in a 7.5 mL bottle.**

**NDC 24208-485-10, 10 mL, in a 10 mL bottle.**

### *Storage*

Store Dorzolamide HCl Ophthalmic Solution at 20-25°C (68-77°F). Protect from light.

## **17 PATIENT COUNSELING INFORMATION**

See FDA-approved patient labeling (Instructions for Use).

### **17.1 Sulfonamide Reactions**

Dorzolamide HCl Ophthalmic Solution is a sulfonamide and although administered topically is absorbed systemically. Therefore the same types of adverse reactions that are attributable to sulfonamides may occur with topical administration. Advise patients that if serious or unusual reactions including severe skin reactions or signs of hypersensitivity occur, they should discontinue the use of the product [*see Warnings and Precautions (5.1)*].

### **17.2 Intercurrent Ocular Conditions**

Advise patients that if they have ocular surgery or develop an intercurrent ocular condition (e.g., trauma or infection), they should immediately seek their physician's advice concerning the continued use of the present multidose container.

### **17.3 Handling Ophthalmic Solutions**

Instruct patients that ocular solutions, if handled improperly or if the tip of the dispensing container contacts the eye or surrounding structures, can become contaminated by common bacteria known to cause ocular infections. Serious damage to the eye and subsequent loss of vision may result from using contaminated solutions.

### **17.4 Concomitant Topical Ocular Therapy**

If more than one topical ophthalmic drug is being used, the drugs should be administered at least five minutes apart.

### **17.5 Contact Lens Use**

Advise patients that Dorzolamide HCl Ophthalmic Solution contains benzalkonium chloride which may be absorbed by soft contact lenses. Contact lenses should be removed prior to administration of the solution. Lenses may be reinserted 15 minutes following Dorzolamide HCl Ophthalmic Solution administration.

### **17.6 Patient Instructions**

Advise patients that if they develop any ocular reactions, particularly conjunctivitis and lid reactions, they should discontinue use and seek their physician's advice.

Instruct patients to avoid allowing the tip of the dispensing container to contact the eye or surrounding structures.

Bausch & Lomb Incorporated.

Tampa, FL 33637

©Bausch & Lomb Incorporated.

Revised: August 2014



9406600

## **INSTRUCTIONS FOR USE**

### **Dorzolamide Hydrochloride Ophthalmic Solution 2%**

#### **Sterile**

- Wash hands before each use.
- To open the bottle, remove the shrink neck band and unscrew the cap by turning counter clockwise.



- Tilt your head back and pull your lower eyelid down slightly to form a pocket between your eyelid and your eye.



- Invert the bottle, and instill drops as directed by your doctor.



- If your doctor has told you to use Dorzolamide HCl Ophthalmic Solution drops in both eyes, repeat Steps 3 and 4.
- Replace cap on bottle and turn until closed.

#### **How should I store Dorzolamide HCl Ophthalmic Solution?**

- Store Dorzolamide HCl Ophthalmic Solution between 68°F to 77°F (20°C to 25°C)
- Protect from light
- Safely throw away medicine that is out of date or no longer needed.

**KEEP DORZOLAMIDE HCL OPHTHALMIC SOLUTION AND ALL MEDICINES OUT OF THE REACH OF CHILDREN.**

#### **Important information about using Dorzolamide HCl Ophthalmic Solution**

- If you have any eye or skin reactions, especially conjunctivitis or eyelid reactions to Dorzolamide

HCl Ophthalmic Solution, stop using it and call your doctor right away.

- If you have eye surgery or have a problem such as trauma or infection of your eye while using Dorzolamide HCl Ophthalmic Solution, call your doctor right away.
- If you do not handle eye medicines the right way the medicine can become contaminated. If the tip of the dispenser touches your eye or areas around your eye, the tip can become contaminated with bacteria which can cause an eye infection and other serious problems including loss of eyesight.
- If you use other eye medicines dropped onto the eye like Dorzolamide HCl Ophthalmic Solution, use the medicines at least 5 minutes before or after you use Dorzolamide HCl Ophthalmic Solution.
- Dorzolamide HCl Ophthalmic Solution contains benzalkonium chloride which may be absorbed by soft contact lenses. If you wear contact lenses, remove them before you use your Dorzolamide HCl Ophthalmic Solution. You can place your contact lenses back into your eyes 15 minutes after using your Dorzolamide HCl Ophthalmic Solution.

This Instructions for Use has been approved by the U.S. Food and Drug Administration.

Bausch & Lomb Incorporated.

Tampa, FL 33637

©Bausch & Lomb Incorporated.

Revised: August, 2014

9406600

**PRINCIPAL DISPLAY PANEL**

NDC 24208-485-10

BAUSCH & LOMB

**Dorzolamide HCl**

**Ophthalmic**

**Solution, 2%\***

Dorzolamide Equivalent

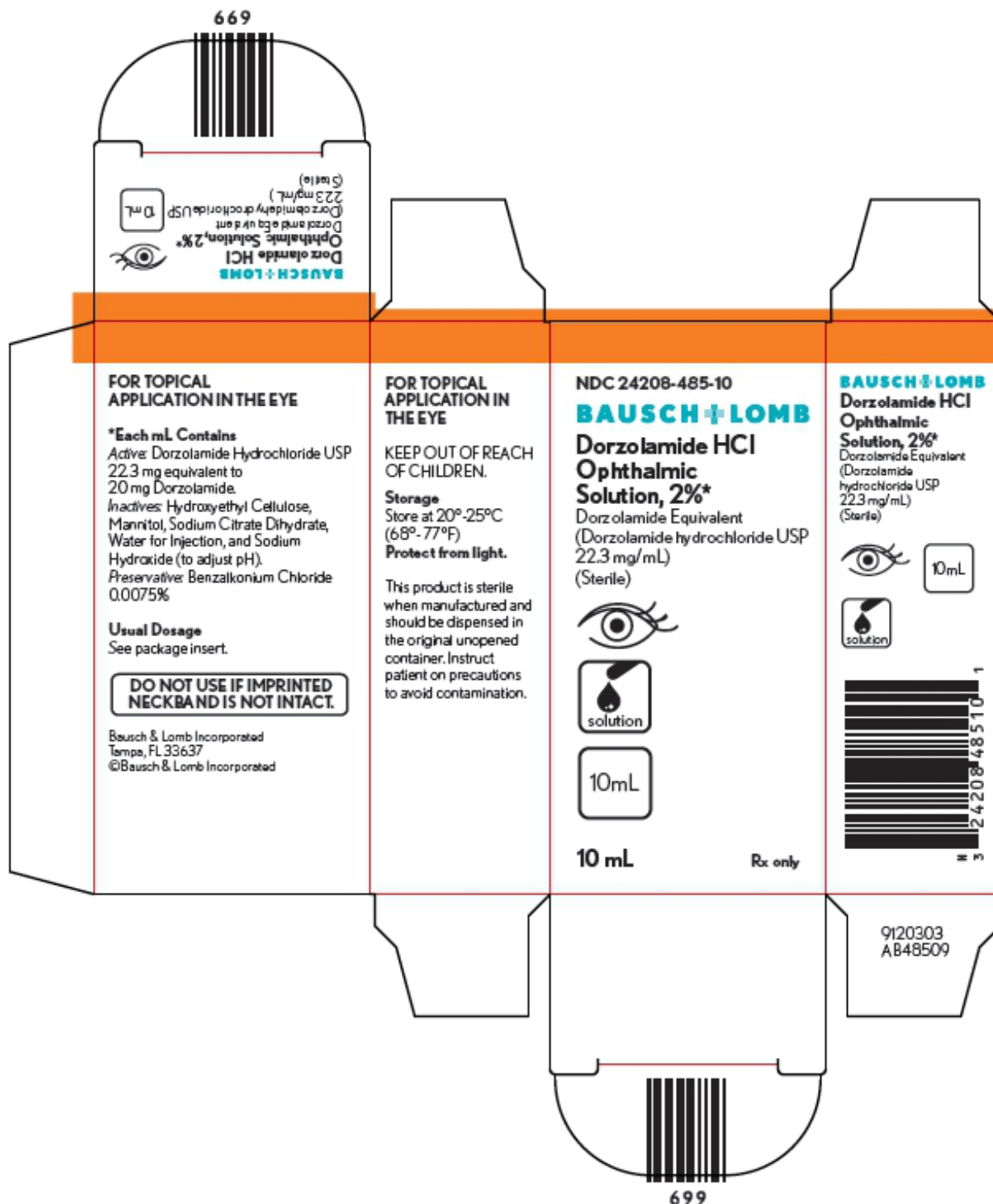
(Dorzolamide hydrochloride USP

22.3 mg/mL)

(Sterile)

**10 mL**

**Rx only**



## DORZOLAMIDE HCL

dorzolamide hcl solution/ drops

### Product Information

<b>Product Type</b>	HUMAN PRESCRIPTION DRUG LABEL	<b>Item Code (Source)</b>	NDC:24208-485
<b>Route of Administration</b>	OPHTHALMIC	<b>DEA Schedule</b>	

**Active Ingredient/Active Moiety**

Ingredient Name	Basis of Strength	Strength
DORZOLAMIDE HYDROCHLORIDE (DORZOLAMIDE)	DORZOLAMIDE	20 mg in 1 mL

**Inactive Ingredients**

Ingredient Name	Strength
BENZALKONIUM CHLORIDE	
HYDROXYETHYL CELLULOSE (2000 MPAS AT 1%)	
MANNITOL	
TRISODIUM CITRATE DIHYDRATE	
SODIUM HYDROXIDE	
WATER	

**Packaging**

#	Item Code	Package Description	Marketing Start Date	Marketing End Date
1	NDC:24208-485-10	1 in 1 CARTON		
1		10 mL in 1 BOTTLE, DROPPER		
2	NDC:24208-485-05	1 in 1 CARTON		
2		5 mL in 1 BOTTLE, DROPPER		

**Marketing Information**

Marketing Category	Application Number or Monograph Citation	Marketing Start Date	Marketing End Date
ANDA	ANDA090143	06/25/2009	

**Labeler** - Bausch & Lomb Incorporated (196603781)**Establishment**

Name	Address	ID/FEI	Business Operations
Bausch & Lomb Incorporated		807927397	MANUFACTURE(24208-485)

Revised: 8/2014

Bausch &amp; Lomb Incorporated