

**LAMIVUDINE AND ZIDOVUDINE- lamivudine and zidovudine tablet, film coated  
NuCare Pharmaceuticals, Inc.**

**HIGHLIGHTS OF PRESCRIBING INFORMATION  
HIGHLIGHTS OF PRESCRIBING INFORMATION**

These highlights do not include all the information needed to use LAMIVUDINE and ZIDOVUDINE TABLETS safely and effectively. See full prescribing information for LAMIVUDINE and ZIDOVUDINE TABLETS.

**LAMIVUDINE and ZIDOVUDINE tablets USP, for oral use**

**Initial U.S. Approval: 1997**

**WARNING: HEMATOLOGIC TOXICITY, MYOPATHY, LACTIC ACIDOSIS, AND SEVERE  
HEPATOMEGALY and EXACERBATIONS OF HEPATITIS B**

*See full prescribing information for complete boxed warning.*

**Hematologic Toxicity**

- Hematologic toxicity, including neutropenia and anemia has been associated with the use of zidovudine, a component of lamivudine and zidovudine tablets. ( 5.1)

**Myopathy**

- Symptomatic myopathy associated with prolonged use of zidovudine. ( 5.2)

**Lactic Acidosis and Severe Hepatomegaly with Steatosis**

- Lactic acidosis and severe hepatomegaly with steatosis, including fatal cases, have been reported with the use of nucleoside analogues. ( 5.3)

**Exacerbations of Hepatitis B**

- Severe acute exacerbations of hepatitis B have been reported in patients who are co-infected with hepatitis B virus (HBV) and human immunodeficiency virus (HIV-1) and have discontinued lamivudine, a component of lamivudine and zidovudine tablet. Monitor hepatic function closely in these patients and, if appropriate, initiate anti-hepatitis B treatment. ( 5.4)

**RECENT MAJOR CHANGES**

Warnings and Precautions ( 5)

09/2015

**INDICATIONS AND USAGE**

Lamivudine and Zidovudine tablet, USP a combination of 2 nucleoside analogue reverse transcriptase inhibitors, is indicated in combination with other antiretroviral agents for the treatment of HIV-1 infection.( 1)

**DOSAGE AND ADMINISTRATION**

- Adults and Adolescents weighing greater than or equal to 30 kg: 1 tablet orally twice daily. ( 2.1)
- Pediatrics weighing greater than or equal to 30 kg: 1 tablet orally twice daily. ( 2.2)
- Because lamivudine and zidovudine tablet is a fixed-dose tablet and cannot be dose adjusted, lamivudine and zidovudine tablet is not recommended in patients requiring dosage adjustment or with hepatic impairment or experiencing dose-limiting adverse reactions. ( 2.3.4)

**DOSAGE FORMS AND STRENGTHS**

Tablets: Scored 150 mg lamivudine and 300 mg zidovudine ( 3)

**CONTRAINDICATIONS**

Lamivudine and Zidovudine tablets are contraindicated in patients with a previous hypersensitivity reaction to lamivudine or zidovudine. ( 4)

**WARNINGS AND PRECAUTIONS**

- Lamivudine and Zidovudine tablet should not be administered with other lamivudine- or zidovudine-containing products or emtricitabine-containing products. ( 5.5)
- Hepatic decompensation, some fatal, has occurred in HIV-1/HCV co-infected patients receiving

combination antiretroviral therapy and interferon alfa with/without ribavirin. Discontinue lamivudine and zidovudine tablet as medically appropriate and consider dose reduction or discontinuation of interferon alfa, ribavirin, or both. ( 5.6)

- Exacerbation of anemia has been reported in HIV-1/HCV co-infected patients receiving ribavirin and zidovudine. Coadministration of ribavirin and zidovudine is not advised. ( 5.6)
- Pancreatitis: Use with caution in patients with a history of pancreatitis or other significant risk factors for pancreatitis. Discontinue treatment as clinically appropriate. ( 5.7)
- Immune reconstitution syndrome and redistribution/accumulation of body fat have been reported in patients treated with combination antiretroviral therapy ( 5.8, 5.9)

#### -----ADVERSE REACTIONS-----

Most commonly reported adverse reactions (incidence greater than or equal to 15%) clinical trials of combination lamivudine and zidovudine were headache, nausea, malaise and fatigue, nasal signs and symptoms, diarrhea, and cough. ( 6.1)

**To report SUSPECTED ADVERSE REACTIONS, contact Hetero Labs Limited at 1-866-495-1995 or FDA at 1-800-FDA-1088 or [www.fda.gov/medwatch](http://www.fda.gov/medwatch).**

#### -----DRUG INTERACTIONS-----

- Agents antagonistic with zidovudine: Concomitant use should be avoided ( 7.1)
- Hematologic/bone marrow suppressive/cytotoxic agents: May increase the hematologic toxicity of zidovudine. ( 7.1)

#### -----USE IN SPECIFIC POPULATIONS-----

- Lactation: Breastfeeding not recommended. ( 8.2)
- See 17 for PATIENT COUNSELING INFORMATION.**  
**See 17 for PATIENT COUNSELING INFORMATION.**

**Revised: 7/2017**

---

## **FULL PRESCRIBING INFORMATION: CONTENTS\***

### **BOXED WARNING**

### **1 INDICATIONS & USAGE**

### **2 DOSAGE & ADMINISTRATION**

- 2.1 Recommended Dosage for Adults and Adolescents
- 2.2 Recommended Dosage for Pediatric Patients
- 2.3 Not Recommended Due to Lack of Dosage Adjustment

### **3 DOSAGE FORMS & STRENGTHS**

### **4 CONTRAINDICATIONS**

### **5 WARNINGS AND PRECAUTIONS**

- 5.1 Hematologic Toxicity/Bone Marrow Suppression
- 5.2 Myopathy
- 5.3 Lactic Acidosis and Severe Hepatomegaly with Steatosis
- 5.4 Patients with Hepatitis B Virus Co-infection
- 5.5 Related Products that are Not Recommended
- 5.6 Uses With Interferon- and Ribavirin-Based Regimens
- 5.7 Pancreatitis
- 5.8 Immune Reconstitution Syndrome
- 5.9 Fat Redistribution

### **6 ADVERSE REACTIONS**

- 6.1 Clinical Trials Experience
- 6.2 Postmarketing Experience

### **7 DRUG INTERACTIONS**

- 7.1 Zidovudine

### **8 USE IN SPECIFIC POPULATIONS**

- 8.1 Pregnancy
- 8.2 Lactation
- 8.4 Pediatric Use
- 8.5 Geriatric Use

- 8.6 Patients with Impaired Renal Function
- 8.7 Patients with Impaired Hepatic Function

## **10 OVERDOSAGE**

## **11 DESCRIPTION**

## **12 CLINICAL PHARMACOLOGY**

- 12.1 Mechanism of Action
- 12.3 Pharmacokinetics
- 12.4 Microbiology

## **13 NONCLINICAL TOXICOLOGY**

- 13.1 Carcinogenesis & Mutagenesis & Impairment Of Fertility
- 13.2 Animal Toxicology and/or Pharmacology

## **14 CLINICAL STUDIES**

- 14.1 Adults
- 14.2 Prevention of Maternal-Fetal HIV-1 Transmission

## **16 HOW SUPPLIED/STORAGE AND HANDLING**

## **17 PATIENT COUNSELING INFORMATION**

\* Sections or subsections omitted from the full prescribing information are not listed.

---

## **FULL PRESCRIBING INFORMATION**

### **BOXED WARNING**

#### **WARNING: HEMATOLOGIC TOXICITY, MYOPATHY, LACTIC ACIDOSIS, AND SEVERE HEPATOMEGALY, and EXACERBATIONS OF HEPATITIS B**

##### **Hematologic Toxicity**

Zidovudine, a component of lamivudine and zidovudine tablets, has been associated with hematologic toxicity including neutropenia and severe anemia, particularly in patients with advanced Human Immunodeficiency Virus (HIV-1) disease [see *Warnings and Precautions* ( 5.1)].

##### **Myopathy**

Prolonged use of zidovudine has been associated with symptomatic myopathy [see *Warnings and Precautions* ( 5.2)].

##### **Lactic Acidosis and Severe Hepatomegaly with Steatosis**

Lactic acidosis and severe hepatomegaly with steatosis, including fatal cases, have been reported with the use of nucleoside analogues and other antiretrovirals. Discontinue lamivudine and zidovudine tablets if clinical or laboratory findings suggestive of lactic acidosis or pronounced hepatotoxicity occur [see *Warnings and Precautions* ( 5.3)].

##### **Exacerbations of Hepatitis B:**

Severe, acute exacerbations of hepatitis B have been reported in patients who are co-infected with hepatitis B virus (HBV) and HIV-1 and have discontinued lamivudine, which is one component of lamivudine and zidovudine tablets. Hepatic function should be monitored closely with both clinical and laboratory follow-up for at least several months in patients who discontinue lamivudine and zidovudine tablet and are co-infected with HIV-1 and HBV. If appropriate, initiation of anti-hepatitis B therapy may be warranted [see *Warnings and Precautions* ( 5.4)].

## **1 INDICATIONS & USAGE**

Lamivudine and Zidovudine tablet, USP a combination of two nucleoside analogues, is indicated in combination with other antiretrovirals for the treatment of human immunodeficiency virus type 1 (HIV-1) infection.

## **2 DOSAGE & ADMINISTRATION**

### **2.1 Recommended Dosage for Adults and Adolescents**

The recommended dosage of lamivudine and zidovudine tablet in HIV-1-infected adults and adolescents weighing greater than or equal to 30 kg is 1 tablet (containing 150 mg of lamivudine and 300 mg of zidovudine) taken orally twice daily.

### **2.2 Recommended Dosage for Pediatric Patients**

The recommended oral dosage of scored lamivudine and zidovudine tablets for pediatric patients who weigh greater than or equal to 30 kg and for whom a solid oral dosage form is appropriate is 1 tablet administered orally twice daily.

Before prescribing lamivudine and zidovudine tablets, children should be assessed for the ability to swallow tablets. If a child is unable to reliably swallow a lamivudine and zidovudine tablet, the liquid oral formulations should be prescribed: lamivudine oral solution and zidovudine syrup.

### **2.3 Not Recommended Due to Lack of Dosage Adjustment**

Because lamivudine and zidovudine is a fixed-dose tablet and cannot be adjusted, lamivudine and zidovudine tablets are not recommended for:

- pediatric patients weighing less than 30 kg [*see Use in Specific Populations ( 8.4)*].
- patients with creatinine clearance less than 50 mL per minute [*see Use in Specific Populations ( 8.6)*].
- patients with hepatic impairment [*see Use in Specific Populations ( 8.7)*].
- patients experiencing dose-limiting adverse reactions.

Liquid and solid oral formulations of the individual components of lamivudine and zidovudine tablet are available for these populations.

## **3 DOSAGE FORMS & STRENGTHS**

Lamivudine and Zidovudine tablets, USP contain 150 mg lamivudine, USP and 300 mg zidovudine, USP are white, film coated, capsule shaped tablets debossed with 'H' and score line on one side and '2' on other side.

## **4 CONTRAINDICATIONS**

Lamivudine and Zidovudine tablets are contraindicated in patients with a previous hypersensitivity reaction to lamivudine or zidovudine.

## **5 WARNINGS AND PRECAUTIONS**

### **5.1 Hemotologic Toxicity/Bone Marrow Suppression**

Zidovudine, a component of lamivudine and zidovudine tablet, has been associated with hematologic toxicity including neutropenia and anemia, particularly in patients with advanced HIV-1 disease. Lamivudine and Zidovudine tablet should be used with caution in patients who have bone marrow compromise evidenced by granulocyte count less than 1,000 cells/mm<sup>3</sup> or hemoglobin less than 9.5 g/dL [ *see Adverse Reactions ( 6.1)*].

Frequent blood counts are strongly recommended in patients with advanced HIV-1 disease who are treated with lamivudine and zidovudine tablet. Periodic blood counts are

recommended for other HIV-1-infected patients. If anemia or neutropenia develops, dosage interruption may be needed .

## **5.2 Myopathy**

Myopathy and myositis, with pathological changes similar to that produced by HIV-1 disease, have been associated with prolonged use of zidovudine, and therefore may occur with therapy with lamivudine and zidovudine tablet.

## **5.3 Lactic Acidosis and Severe Hepatomegaly with Steatosis**

Lactic acidosis and severe hepatomegaly with steatosis, including fatal cases, have been reported with the use of nucleoside analogues and other antiretrovirals. See full prescribing information for lamivudine tablets and zidovudine tablets. Treatment with lamivudine and zidovudine tablet should be suspended in any patient who develops clinical or laboratory findings suggestive of lactic acidosis or pronounced hepatotoxicity (which may include hepatomegaly and steatosis even in the absence of marked transaminase elevations).

## **5.4 Patients with Hepatitis B Virus Co-infection**

### Posttreatment Exacerbations of Hepatitis:

Clinical and laboratory evidence of exacerbations of hepatitis have occurred after discontinuation of lamivudine. See full prescribing information for lamivudine tablets. Patients should be closely monitored with both clinical and laboratory follow-up for at least several months after stopping treatment.

### Emergence of Lamivudine-resistant HBV

Safety and efficacy of lamivudine have not been established for treatment of chronic hepatitis B in subjects dually infected with HIV-1 and HBV. Emergence of hepatitis B virus variants associated with resistance to lamivudine has been reported in HIV-1-infected subjects who have received lamivudine-containing antiretroviral regimens in the presence of concurrent infection with hepatitis B virus. See full prescribing information for lamivudine.

## **5.5 Related Products that are Not Recommended**

Lamivudine and zidovudine tablet is a fixed-dose combination of 2 nucleoside analogue reverse transcriptase inhibitors (lamivudine and zidovudine). Concomitant administration of lamivudine and zidovudine tablets with other products containing lamivudine or zidovudine is not recommended. In addition, do not administer lamivudine and zidovudine tablets in combination with products containing emtricitabine.

## **5.6 Uses With Interferon- and Ribavirin-Based Regimens**

Patients receiving interferon alfa with or without ribavirin and lamivudine and zidovudine tablet should be closely monitored for treatment-associated toxicities, especially hepatic decompensation, neutropenia, and anemia. See full prescribing information for lamivudine and zidovudine. Discontinuation of lamivudine and zidovudine tablet should be considered as medically appropriate. Dose reduction or discontinuation of interferon alfa, ribavirin, or both should also be considered if worsening clinical toxicities are observed, including hepatic decompensation (e.g., Child-Pugh greater than 6) (see full prescribing information for interferon and ribavirin). Exacerbation of anemia has been reported in HIV-1/HCV co-infected patients receiving ribavirin and zidovudine. Coadministration of ribavirin and lamivudine and zidovudine tablets are not advised.

## **5.7 Pancreatitis**

Lamivudine and Zidovudine Tablet should be used with caution in patients with a history of pancreatitis or other significant risk factors for the development of pancreatitis. Treatment with lamivudine and zidovudine tablet should be stopped immediately if clinical signs, symptoms, or laboratory abnormalities suggestive of pancreatitis occur [see *Adverse Reactions* ( 6.1)].

## 5.8 Immune Reconstitution Syndrome

Immune reconstitution syndrome has been reported in patients treated with combination antiretroviral therapy, including lamivudine and zidovudine tablet. During the initial phase of combination antiretroviral treatment, patients whose immune systems respond may develop an inflammatory response to indolent or residual opportunistic infections (such as *Mycobacterium avium* infection, cytomegalovirus, *Pneumocystis jirovecii* pneumonia (PCP), or tuberculosis), which may necessitate further evaluation and treatment.

Autoimmune disorders (such as Graves' disease, polymyositis, and Guillain-Barré syndrome) have also been reported to occur in the setting of immune reconstitution, however, the time to onset is more variable, and can occur many months after initiation of treatment.

## 5.9 Fat Redistribution

Redistribution/accumulation of body fat including central obesity, dorsocervical fat enlargement (buffalo hump), peripheral wasting, facial wasting, breast enlargement, and "cushingoid appearance" have been observed in patients receiving antiretroviral therapy. The mechanism and long-term consequences of these events are currently unknown. A causal relationship has not been established.

## 6 ADVERSE REACTIONS

The following adverse reactions are discussed in other sections of the labeling:

- Hematologic toxicity, including neutropenia and anemia [see *Boxed Warning, Warnings and Precautions* ( 5.1)] .
- Symptomatic myopathy [see *Boxed Warning, Warnings and Precautions* ( 5.2)] .
- Lactic acidosis and severe hepatomegaly with steatosis [see *Boxed Warning, Warnings and Precautions* ( 5.3)] .
- Exacerbations of hepatitis B [see *Boxed Warning, Warnings and Precautions* ( 5.4)] .
- Hepatic decompensation in patients co-infected with HIV-1 and hepatitis C [see *Warnings and Precautions* ( 5.6)].
- Exacerbation of anemia in HIV-1/HCV co-infected patients receiving ribavirin and zidovudine [see *Warnings and Precautions* ( 5.6)].
- Pancreatitis [see *Warnings and Precautions* ( 5.7)].
- Immune reconstitution syndrome [see *Warnings and Precautions* ( 5.8)].
- Fat redistribution [see *Warnings and Precautions* ( 5.9)].

### 6.1 Clinical Trials Experience

Because clinical trials are conducted under widely varying conditions, adverse reaction rates observed in the clinical trials of a drug cannot be directly compared to rates in the clinical trials of another drug and may not reflect the rates observed in practice.

Lamivudine Plus Zidovudine Administered As Separate Formulations: In 4 randomized, controlled trials of lamivudine 300 mg per day plus zidovudine 600 mg per day, the following selected adverse reactions and laboratory abnormalities were observed (see Tables 1 and 2).

**Table 1. Selected Clinical Adverse Reactions (Greater than or equal to 5% Frequency) in 4 Controlled Clinical Trials With lamivudine 300 mg per day and**

**zidovudine 600 mg per day**

Adverse Reaction	Lamivudine plus Zidovudine (n = 251)
<b>Body as a whole</b>	
Headache	35%
Malaise & fatigue	27%
Fever or chills	10%
<b>Digestive</b>	
Nausea	33%
Diarrhea	18%
Nausea & vomiting	13%
Anorexia and/or decreased appetite	10%
Abdominal pain	9%
Abdominal cramps	6%
Dyspepsia	5%
<b>Nervous system</b>	
Neuropathy	12%
Insomnia & other sleep disorders	11%
Dizziness	10%
Depressive disorders	9%
<b>Respiratory</b>	
Nasal signs & symptoms	20%
Cough	18%
<b>Skin</b>	
Skin rashes	9%
<b>Musculoskeletal</b>	
Musculoskeletal pain	12%
Myalgia	8%
Arthralgia	5%

Pancreatitis was observed in 9 of the 2,613 adult patients (0.3%) who received lamivudine in controlled clinical trials  
*[see Warnings and Precautions ( 5.7)].*

Selected laboratory abnormalities observed during therapy are listed in Table 2.

**Table 2. Frequencies of Selected Laboratory Abnormalities among Adults in 4 Controlled Clinical Trials of Lamivudine 300 mg per day plus Zidovudine 600 mg per day <sup>a</sup>**

Test (Abnormal Level)	Lamivudine plus Zidovudine % (n)
Neutropenia (ANC<750/mm <sup>3</sup> )	7.2% (237)
Anemia (Hgb<8 g/dL)	2.9% (241)
Thrombocytopenia (platelets-<50,000/mm <sup>3</sup> )	0.4% (240)
ALT (>5 x ULN)	3.7% (241)
AST (>5 x ULN)	1.7% (241)
Bilirubin (>2.5x ULN)	0.8% (241)
Amylase (>2 x ULN)	4.2% (72)

ULN = Upper limit of normal.

ANC = Absolute neutrophil count.

n = Number of patients assessed.

<sup>a</sup> Frequencies of these laboratory abnormalities were higher in subjects with mild laboratory abnormalities at baseline.

## 6.2 Postmarketing Experience

The following adverse reactions have been identified during postmarketing use. Because these reactions are reported voluntarily from a population of unknown size, it is not always possible to reliably estimate their frequency or establish a causal relationship to drug exposure.

Body as a Whole: Redistribution/accumulation of body fat [ see *Warnings and Precautions* ( 5.9)].

Cardiovascular: Cardiomyopathy.

Endocrine and Metabolic: Gynecomastia, hyperglycemia.

Gastrointestinal: Oral mucosal pigmentation, stomatitis.

General: Vasculitis, weakness.

Hemic and Lymphatic: Anemia, (including pure red cell aplasia and anemias progressing on therapy), lymphadenopathy, splenomegaly.

Hepatic and Pancreatic: Lactic acidosis and hepatic steatosis, pancreatitis, posttreatment exacerbation of hepatitis B [see *Boxed Warning, Warnings and Precautions* ( 5.3), 5.4), ( 5.7)].

Hypersensitivity: Sensitization reactions (including anaphylaxis), urticaria.

Musculoskeletal: Muscle weakness, CPK elevation, rhabdomyolysis.

Nervous: Paresthesia, peripheral neuropathy, seizures.

Respirator: Abnormal breath sounds/wheezing.

Skin: Alopecia, erythema multiforme, Stevens-Johnson syndrome.

## 7 DRUG INTERACTIONS

No drug interaction studies have been conducted using lamivudine and zidovudine tablets [see *Clinical Pharmacology* ( 12.3)].

### 7.1 Zidovudine

#### Agents Antagonistic with Zidovudine

Concomitant use of zidovudine with the following drugs should be avoided since an antagonistic relationship has been demonstrated *in vitro*:

- Stavudine
- Doxorubicine
- Nucleoside analogues e.g., ribavirin

#### Hematologic/Bone Marrow Suppressive/Cytotoxic Agents

Coadministration with the following drugs may increase the hematologic toxicity of zidovudine:

- Ganciclovir
- Interferon alfa
- Ribavirin
- Other bone marrow suppressive or cytotoxic agents



## 8 USE IN SPECIFIC POPULATIONS

### 8.1 Pregnancy

Pregnancy Category C.

Pregnancy Exposure Registry

There is a pregnancy exposure registry that monitors pregnancy outcomes in women exposed to lamivudine and zidovudine tablets during pregnancy. Physicians are encouraged to register patients by calling the Antiretroviral Pregnancy Registry at 1-800-258-4263.

Fetal Risk Summary: There are no adequate and well-controlled trials of lamivudine and zidovudine tablet in pregnant women. Clinical trial data demonstrate that maternal zidovudine treatment during pregnancy reduces vertical transmission of HIV-1 infection to the fetus. Animal reproduction studies performed with lamivudine and zidovudine showed increased embryotoxicity fetal malformations (zidovudine), and increased embryoletality (lamivudine). Lamivudine and Zidovudine Tablet should be used during pregnancy only if the potential benefit justifies the potential risk to the fetus.

Clinical Considerations: Treatment of HIV during pregnancy optimizes the health of both mother and fetus. Clinical trial data reviewed by FDA demonstrate that maternal zidovudine treatment significantly reduces vertical transmission of HIV-1 infection to the fetus [see *Clinical Studies* ( 14.2)]. Published data suggest that combination antiretroviral regimens may reduce the rate of vertical transmission even further.

Pharmacokinetics of lamivudine and zidovudine in pregnant women are similar to the pharmacokinetics in nonpregnant women. No dose adjustments are needed during pregnancy.

In a clinical trial, adverse events among HIV-1-infected women were not different among untreated women and women treated with zidovudine. It is not known whether risks of adverse events associated with lamivudine are altered in pregnant women compared with other HIV-1-infected patients (see Human data below).

Data: Human Data: Lamivudine: Lamivudine pharmacokinetics were studied in pregnant women during 2 clinical trials conducted in South Africa. The trial assessed pharmacokinetics in: 16 women at 36 weeks gestation using 150 mg lamivudine twice daily with zidovudine, 10 women at 38 weeks gestation using 150 mg lamivudine twice daily with zidovudine, and 10 women at 38 weeks gestation using lamivudine 300 mg twice daily without other antiretrovirals. Lamivudine pharmacokinetics in pregnant women were similar to those seen in nonpregnant adults and in postpartum women. Lamivudine concentrations were generally similar in maternal, neonatal, and umbilical cord serum samples.

Zidovudine: A randomized, double-blind, placebo-controlled trial was conducted in HIV-1-infected pregnant women to determine the utility of zidovudine for the prevention of maternal-fetal HIV-1 transmission. Zidovudine treatment during pregnancy reduced the rate of maternal-fetal HIV-1 transmission from 24.9% for infants born to placebo-treated mothers to 7.8% for infants born to mothers treated with zidovudine. There were no differences in pregnancy-related adverse events between the treatment groups. Congenital abnormalities occurred with similar frequency between neonates born to mothers who received zidovudine and neonates born to mothers who received placebo. The observed abnormalities included problems in embryogenesis (prior to 14 weeks) or were recognized on ultrasound before or immediately after initiation of study drug [ see *Clinical Studies* ( 14.2)].

Zidovudine pharmacokinetics were studied in a Phase 1 trial of 8 women during the last trimester of pregnancy. As pregnancy progressed, there was no evidence of drug accumulation. The pharmacokinetics of zidovudine were similar to that of nonpregnant adults. Consistent with passive transmission of the drug across the placenta, zidovudine concentrations in neonatal plasma at birth were essentially equal to those in maternal plasma at delivery.

Animal Data: Lamivudine: Animal reproduction studies preformed at oral doses up to 130 and 60 times the adult dose in rats and rabbits, respectively, revealed no evidence of teratogenicity due to lamivudine. Increased early embryoletality occurred in rabbits at exposure levels similar to those in humans. However, there was no indication of this

effect in rats at exposure levels up to 35 times those in humans. Based on animal studies, lamivudine crosses the placenta and is transferred to the fetus [see *Nonclinical Toxicology* ( 13.2)].

*Zidovudine*: Increased fetal resorptions occurred in pregnant rats and rabbits treated with doses of zidovudine that produced drug plasma concentrations 66 to 226 times (rats) and 12 to 87 times (rabbits) the mean steady-state peak human plasma concentration following a single 100-mg dose of zidovudine. There were no other reported developmental anomalies. In another developmental toxicity study, pregnant rats received zidovudine up to near-lethal doses that produced peak plasma concentrations 350 times peak human plasma concentrations (300 times the daily exposure [AUC] in humans given 600 mg/day zidovudine). This dose was associated with marked maternal toxicity and an increased incidence of fetal malformations. However, there were no signs of teratogenicity at doses up to one fifth the lethal dose [see *Nonclinical Toxicology* ( 13.2)].

## **8.2 Lactation**

The Centers for Disease Control and Prevention recommend that HIV-1-infected mothers in the United States not breastfeed their infants to avoid risking postnatal transmission of HIV-1 infection. Because of the potential for HIV-1 transmission mothers should be instructed not to breastfeed.

## **8.4 Pediatric Use**

Lamivudine and Zidovudine tablet is not recommended for use in pediatric patients who weigh less than 30 kg because it is a fixed-dose combination tablet that cannot be adjusted for this patient population [see *Dosage and Administration* ( 2.2)].

## **8.5 Geriatric Use**

Clinical trials of lamivudine and zidovudine tablet did not include sufficient numbers of subjects aged 65 and over to determine whether they respond differently from younger subjects. In general, caution should be exercised in the administration of lamivudine and zidovudine tablet in elderly patients reflecting the greater frequency of decreased hepatic, renal, or cardiac function, and of concomitant disease or other drug therapy [see *Clinical Pharmacology* ( 12.3)].

## **8.6 Patients with Impaired Renal Function**

Lamivudine and zidovudine tablet is not recommended for patients with creatinine clearance less than 50 mL per min because lamivudine and zidovudine tablet is a fixed-dose combination and the dosage of the individual components cannot be adjusted. If a dose reduction of the lamivudine or zidovudine components of lamivudine and zidovudine tablet is required for patients with renal impairment then the individual components should be used [see *Dosage and Administration* ( 2.3), *Clinical Pharmacology* ( 12.3)].

## **8.7 Patients with Impaired Hepatic Function**

Lamivudine and zidovudine tablet is a fixed-dose combination and the dosage of the individual components cannot be adjusted. Zidovudine is primarily eliminated by hepatic metabolism and zidovudine concentrations are increased in patients with impaired hepatic function, which may increase the risk of hematologic toxicity. Frequent monitoring of hematologic toxicities is advised.

## **10 OVERDOSAGE**

There is no known specific treatment for overdose with lamivudine and zidovudine tablet. If overdose occurs, the patient should be monitored and standard supportive treatment applied as required.

### Lamivudine

Because a negligible amount of lamivudine was removed via (4-hour) hemodialysis, continuous ambulatory peritoneal dialysis, and automated peritoneal dialysis, it is not known if continuous hemodialysis would provide clinical benefit in a lamivudine overdose event.

### Zidovudine

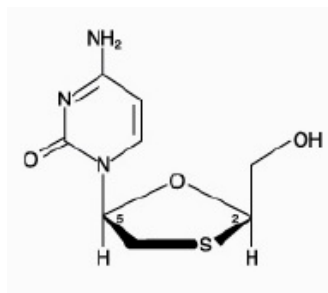
Acute overdoses of zidovudine have been reported in pediatric patients and adults. These involved exposures up to 50 grams. No specific symptoms or signs have been identified following acute overdosage with zidovudine apart from those listed as adverse events such as fatigue, headache, vomiting, and occasional reports of hematological disturbances. Patients recovered without permanent sequelae. Hemodialysis and peritoneal dialysis appear to have a negligible effect on the removal of zidovudine, while elimination of its primary metabolite, 3'-azido-3'-deoxy-5'-O-β-D-glucopyranuronosylthymidine (GZDV), is enhanced.

## **11 DESCRIPTION**

Lamivudine and Zidovudine Tablets, USP are combination tablets containing lamivudine and zidovudine. Lamivudine and Zidovudine (azidothymidine, AZT, or ZDV) are synthetic nucleoside analogues with activity against HIV-1.

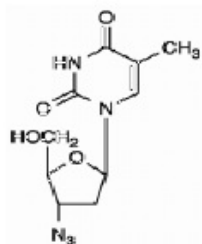
Lamivudine and Zidovudine tablets, USP are for oral administration. Each film-coated tablet contains 150 mg of lamivudine, 300 mg of zidovudine, and the inactive ingredients microcrystalline cellulose, sodium starch glycolate, colloidal silicon dioxide, magnesium stearate and opadry white (hypromellose, polyethylene glycol, polysorbate 80 and titanium dioxide).

Lamivudine: The chemical name of lamivudine is (2R,cis)-4-amino-1- (2-hydroxymethyl-1,3-oxathiolan-5-yl)-(1H)-pyrimidine-2-one. Lamivudine is the (-) enantiomer of a dideoxy analogue of cytidine. Lamivudine has also been referred to as (-)2',3'-dideoxy, 3'-thiacytidine. It has a molecular formula of C<sub>8</sub>H<sub>11</sub>N<sub>3</sub>O<sub>3</sub>S and a molecular weight of 229.26. It has the following structural formula:



Lamivudine is a white to off-white crystalline solid with a solubility of approximately 70 mg/mL in water at 20°C.

Zidovudine: The chemical name of zidovudine is 3'-azido-3'-deoxythymidine. It has a molecular formula of C<sub>10</sub>H<sub>13</sub>N<sub>5</sub>O<sub>4</sub> and a molecular weight of 267.24. It has the following structural formula:



Zidovudine is a white to beige, odorless, crystalline solid with a solubility of 20.1 mg/mL in water at 25°C.

Meets USP Dissolution Test 2.

## 12 CLINICAL PHARMACOLOGY

### 12.1 Mechanism of Action

Lamivudine and Zidovudine Tablet is an antiviral agent [see *Clinical Pharmacology* (12.4)].

### 12.3 Pharmacokinetics

#### Pharmacokinetics in Adults:

One lamivudine and zidovudine tablet was bioequivalent to 1 lamivudine tablet (150 mg) plus 1 zidovudine tablet (300 mg) following single-dose administration to fasting healthy subjects (n = 24).

*Lamivudine:* Following oral administration, lamivudine is rapidly absorbed and extensively distributed. Binding to plasma protein is low. Approximately 70% of an intravenous dose of lamivudine is recovered as unchanged drug in the urine. Metabolism of lamivudine is a minor route of elimination (approximately 5% of an oral dose after 12 hours). In humans, the only known metabolite is the trans-sulfoxide metabolite (approximately 5% of an oral dose after 12 hours).

*Zidovudine:* Following oral administration, zidovudine is rapidly absorbed and extensively distributed. Binding to plasma protein is low. Zidovudine is eliminated primarily by hepatic metabolism. The major metabolite of zidovudine is GZDV. GZDV area under the curve (AUC) is about 3-fold greater than the zidovudine AUC. Urinary recovery of zidovudine and GZDV accounts for 14% and 74% of the dose following oral administration, respectively. A second metabolite, 3'-amino-3'-deoxythymidine (AMT), has been identified in plasma. The AMT AUC was one-fifth of the zidovudine AUC.

In humans, lamivudine and zidovudine are not significantly metabolized by cytochrome P450 enzymes.

The pharmacokinetic properties of lamivudine and zidovudine in fasting subjects are summarized in Table 3.

**Table 3. Pharmacokinetic Parameters <sup>a</sup> for Lamivudine and Zidovudine in Adults**

Parameter	Lamivudine		Zidovudine	
Oral bioavailability (%)	86 ± 16	N = 12	64 ± 10	n = 5
Apparent volume of distribution (L/kg)	1.3 ± 0.4	N = 20	1.6 ± 0.6	n = 8
Plasma protein binding (%)	<36		<38	
CSF:plasma ratio <sup>b</sup>	0.12 [0.04 to 0.47]	n = 38 <sup>c</sup>	0.60 [0.04 to 2.62]	N = 39 <sup>d</sup>
Systemic clearance (L/hr/kg)	0.33 ± 0.06	N = 20	1.6 ± 0.6	n = 6
Renal clearance (L/hr/kg)	0.22 ± 0.06	N = 20	0.34 ± 0.05	n = 9
Elimination half-life (hr) <sup>e</sup>	5 to 7		0.5 to 3	

<sup>a</sup>Data presented as mean ± standard deviation except where noted.

<sup>b</sup>Median [range].

<sup>c</sup>Children.

<sup>d</sup>Adults.

<sup>e</sup>Approximate range.

*Effect of Food on Absorption of Lamivudine and Zidovudine Tablet:* Lamivudine and Zidovudine tablet may be administered with or without food. The lamivudine and zidovudine AUC following administration of lamivudine and zidovudine tablet with food was similar when compared to fasting healthy subjects (n = 24).

## Special Populations

*Renal Impairment: Lamivudine and Zidovudine Tablet:* The effect of renal impairment on the combination of lamivudine and zidovudine has not been evaluated (see the U.S. prescribing information for the individual lamivudine and zidovudine components).

*Hepatic Impairment: Lamivudine and Zidovudine Tablet:* The effect of hepatic impairment on the combination of lamivudine, and zidovudine has not been evaluated (see the U.S. prescribing information for the individual lamivudine and zidovudine components).

*Pregnancy: Lamivudine:* Lamivudine pharmacokinetics were studied in 36 pregnant women during 2 clinical trials conducted in South Africa. Lamivudine pharmacokinetics in pregnant women were similar to those seen in non-pregnant adults and in postpartum women. Lamivudine concentrations were generally similar in maternal, neonatal, and umbilical cord serum samples.

*Zidovudine:* Zidovudine pharmacokinetics have been studied in a Phase 1 trial of 8 women during the last trimester of pregnancy. Zidovudine pharmacokinetics were similar to that of non-pregnant adults. Consistent with passive transmission of the drug across the placenta, zidovudine concentrations in neonatal plasma at birth were essentially equal to those in maternal plasma at delivery.

Although data are limited, methadone maintenance therapy in 5 pregnant women did not appear to alter zidovudine pharmacokinetics.

## Geriatric Patients

The pharmacokinetics of lamivudine and zidovudine have not been studied in subjects over 65 years of age.

## Gender

There are no significant or clinically relevant gender differences in the pharmacokinetics of the individual components (lamivudine or zidovudine) based on the available information that was analyzed for each of the individual components.

## Race

*Lamivudine:* There are no significant or clinically relevant racial differences in lamivudine pharmacokinetics based on the available information that was analyzed for the individual lamivudine component.

*Zidovudine:* The pharmacokinetics of zidovudine with respect to race have not been determined.

## Drug Interactions

No drug interaction trials have been conducted using lamivudine and zidovudine tablets.

*Lamivudine and Zidovudine:* No clinically significant alterations in lamivudine or zidovudine pharmacokinetics were observed in 12 asymptomatic HIV-1-infected adult subjects given a single dose of zidovudine (200 mg) in combination with multiple doses of lamivudine (300 mg every 12 hours).

## Other interactions

*Interferon Alfa:* There was no significant pharmacokinetic interaction between lamivudine and interferon alfa in a trial of 19 healthy male subjects.

*Ribavirin:* *In vitro* data indicate ribavirin reduces phosphorylation of lamivudine,

stavudine, and zidovudine. However, no pharmacokinetic (e.g., plasma concentrations or intracellular triphosphorylated active metabolite concentrations) or pharmacodynamic (e.g., loss of HIV-1/HCV virologic suppression) interaction was observed when ribavirin and lamivudine (n = 18), stavudine (n = 10), or zidovudine (n = 6) were coadministered as part of a multi-drug regimen to HIV-1/HCV co-infected subjects [see *Warnings and Precautions* ( 5.5)].

Table 4 presents drug interaction information for the individual components of lamivudine and zidovudine tablet.

**Table 4. Effect of Coadministered Drugs on Lamivudine and Zidovudine AUC**  
a

Coadministered Drug and Dose	Drug and Dose	n	Concentration of Lamivudine or Zidovudine		Concentration of Coadministered Drug
			AUC	Variability	
Nelfinavir 750mg every 8h x 7 to 10 days	Lamivudine single 150 mg	11	10%	95% CI: 1% to 20%	«
Trimethoprim 160 mg/ Sulfamethoxazole 800 mg daily x 5 days	Lamivudine single 300 mg	14	43%	90% CI: 32% to 55%	«
Atovaquone 750 mg every 12 h with food	zidovudine 200 mg every 8 h	14	31%	Range 23% to 78% <sup>b</sup>	«
Clarithromycin 500 mg twice daily	zidovudine 100 mg every 4 h x 7 days	4	~ 12%	Range ~34% to - 14%	Not Reported
Fluconazole 400 mg daily	zidovudine 200 mg every 8 h	12	74%	95% CI: 54% to 98%	Not Reported
Methadone 30 to 90 mg daily	zidovudine 200 mg every 4 h	9	43%	Range 16% to 64% <sup>b</sup>	«
Nelfinavir 750 mg every 8h x 7 to 10 days	zidovudine single 200 mg	11	~ 35%	Range 28% to 41%	«
Probenecid 500 mg every 6 h x 2 days	Zidovudine 2 mg/kg every 8 h x 3	3	106%	Range 100% to 170% <sup>b</sup>	Not Assessed



	days				
Rifampin 600 mg daily x 14 days	zidovudine 200 mg every 8 h x 14 days	8	~ 47%	90% CI: 41% to 53%	Not Assessed
Ritonavir 300 mg every 6 h x 4 days	zidovudine 200 mg every 8 h x 4 days	9	~ 25%	95% CI: 15% to 34%	«
Valproic acid 250 mg or 500 mg every 8 h x 4 days	zidovudine 100 mg every 8 h x 4 days	6	80%	Range 64% to 130% <sup>b</sup>	Not Assessed

↑=Increase; ↓=Decrease; ↔=no significant change; AUC = area under the concentration versus time curve; CI = confidence interval.

<sup>a</sup> This table is not all inclusive.

<sup>b</sup> Estimated range of percent difference.

## 12.4 Microbiology

### Mechanism of Action

*Lamivudine:* Lamivudine is a synthetic nucleoside analogue. Intracellularly, lamivudine is phosphorylated to its active 5' -triphosphate metabolite, lamivudine triphosphate (3TC-TP). The principal mode of action of 3TC-TP is inhibition of reverse transcriptase (RT) via DNA chain termination after incorporation of the nucleotide analogue.

*Zidovudine:* Zidovudine is a synthetic nucleoside analogue. Intracellularly, zidovudine is phosphorylated to its active 5' -triphosphate metabolite, zidovudine triphosphate (ZDV - TP). The principal mode of action of ZDV - TP is inhibition of RT via DNA chain termination after incorporation of the nucleotide analogue.

### Antiviral Activity

*Lamivudine plus Zidovudine:* In HIV-1-infected MT-4 cells, lamivudine in combination with zidovudine at various ratios exhibited synergistic antiretroviral activity.

*Lamivudine:* The antiviral activity of lamivudine against HIV-1 was assessed in a number of cell lines including monocytes and fresh human peripheral blood lymphocytes (PBMcs) using standard susceptibility assays. EC<sub>50</sub> values were in the range of 0.003 to 15 microM (1 microM = 0.23 mcg per mL). The median EC<sub>50</sub> values of lamivudine were 60 nM (range: 20 to 70 nM), 35 nM (range: 30 to 40 nM), 30 nM (range: 20 to 90 nM), 20 nM (range: 3 to 40 nM), 30 nM (range: 1 to 60 nM), 30 nM (range: 20 to 70 nM), 30 nM (range: 3 to 70 nM), and 30 nM (range: 20 to 90 nM) against HIV-1 clades A-G and

group O viruses (n = 3 except n = 2 for clade B) respectively. The EC<sub>50</sub> values against HIV-2 isolates (n = 4) ranged from 0.003 to 0.120 microM in PBMCs. Ribavirin (50 microM) used in the treatment of chronic HCV infection decreased the anti-HIV-1 activity of lamivudine by 3.5-fold in MT-4 cells.

*Zidovudine:* The antiviral activity of zidovudine against HIV-1 was assessed in a number of cell lines including monocytes and fresh human peripheral blood lymphocytes. The EC<sub>50</sub> and EC<sub>90</sub> values for zidovudine were 0.01 to 0.49 microM (1 microM = 0.27 mcg/mL) and 0.1 to 9 microM, respectively. HIV-1 from therapy-naïve subjects with no amino acid substitutions associated with resistance gave median EC<sub>50</sub> values of 0.011 microM (range: 0.005 to 0.110 microM) from Virco (n = 92 baseline samples) and 0.0017 microM (0.006 to 0.0340 microM) from Monogram Biosciences (n = 135 baseline samples). The EC<sub>50</sub> values of zidovudine against different HIV-1 clades (A-G) ranged from 0.00018 to 0.02 microM, and against HIV-2 isolates from 0.00049 to 0.004 microM. Ribavirin has been found to inhibit the phosphorylation of zidovudine in cell culture.

Neither lamivudine nor zidovudine were antagonistic to tested anti-HIV agents, with the exception of stavudine where an antagonistic relationship with zidovudine has been demonstrated in cell culture. See full prescribing information for lamivudine and zidovudine.

#### Resistance

In subjects receiving lamivudine monotherapy or combination therapy with lamivudine plus zidovudine, HIV-1 isolates from most subjects became phenotypically and genotypically resistant to lamivudine within 12 weeks.

HIV-1 strains resistant to both lamivudine and zidovudine have been isolated from subjects after prolonged lamivudine/zidovudine therapy. Dual resistance required the presence multiple amino acid substitutions, the most essential of which may be G333E. The incidence of dual resistance and the duration of combination therapy required before dual resistance occurs are unknown.

*Lamivudine:* Lamivudine-resistant isolates of HIV-1 have been selected in cell culture and have also been recovered from subjects treated with lamivudine or lamivudine plus zidovudine. Genotypic analysis of isolates selected in cell culture and recovered from lamivudine-treated subjects showed that the resistance was due to a specific amino acid substitution in the HIV-1 reverse transcriptase at codon 184 changing the methionine to either isoleucine or valine (M184V/I).

*Zidovudine:* HIV-1 isolates with reduced susceptibility to zidovudine have been selected in cell culture and were also recovered from subjects treated with zidovudine. Genotypic analyses of the isolates selected in cell culture and recovered from zidovudine-treated subjects showed thymidine analog mutation (TAM) substitutions in HIV-1 RT (M41L, D67N, K70R, L210W, T215Y or F, and K219E/R/H/Q/N) that confer zidovudine resistance. In general, higher levels of resistance were associated with greater number of substitutions.

In some subjects harboring zidovudine-resistant virus at baseline, phenotypic sensitivity to zidovudine was restored by 12 weeks of treatment with lamivudine and zidovudine.

#### Cross-Resistance:

Cross-resistance has been observed among NRTIs. Cross-resistance between lamivudine and zidovudine has not been reported. In some subjects treated with lamivudine alone or in combination with zidovudine, isolates have emerged with a substitution at codon 184, which confers resistance to lamivudine.

TAM substitutions are selected by zidovudine and confer cross-resistance to abacavir, didanosine, stavudine, and tenofovir.

## **13 NONCLINICAL TOXICOLOGY**

### **13.1 Carcinogenesis & Mutagenesis & Impairment Of Fertility**

Carcinogenicity:*Lamivudine:* Long-term carcinogenicity studies with lamivudine in mice and rats showed no evidence of carcinogenic potential at exposures up to 10 times (mice) and 58 times (rats) the human exposures at the recommended dose of 300 mg. *Zidovudine:* Zidovudine was administered orally at 3 dosage levels to separate groups of

mice and rats (60 females and 60 males in each group). Initial single daily doses were 30, 60, and 120 mg per kg per day in mice and 80, 220, and 600 mg per kg per day in rats. The doses in mice were reduced to 20, 30, and 40 mg per kg per day after day 90 because of treatment-related anemia, whereas in rats only the high dose was reduced to 450 mg per kg per day on day 91 and then to 300 mg per kg per day on day 279. In mice, 7 late-appearing (after 19 months) vaginal neoplasms (5 nonmetastasizing squamous cell carcinomas, 1 squamous cell papilloma, and 1 squamous polyp) occurred in animals given the highest dose. One late-appearing squamous cell papilloma occurred vagina of a middle-dose animal. No vaginal tumors were found at the lowest dose. In rats, 2 late-appearing (after 20 months), nonmetastasizing vaginal squamous cell carcinomas occurred in animals given the highest dose. No vaginal tumors occurred at the low or middle dose in rats. No other drug-related tumors were observed in either sex of either species.

At doses that produced tumors in mice and rats, the estimated drug exposure (as measured by AUC) was approximately 3 times (mouse) and 24 times (rat) the estimated human exposure at the recommended therapeutic dose of 100 mg every 4 hours. It is not known how predictive the results of rodent carcinogenicity studies may be for humans.

#### Mutagenicity:

**Lamivudine:** Lamivudine was mutagenic in an L5178Y mouse lymphoma assay and clastogenic in a cytogenetic assay using cultured human lymphocytes. Lamivudine was negative in a microbial mutagenicity assay, in an *in vitro* cell transformation assay, in a rat micronucleus test, in a rat bone marrow cytogenetic assay, and in an assay for unscheduled DNA synthesis in rat liver.

**Zidovudine:** Zidovudine was mutagenic in an L5178Y mouse lymphoma assay, positive in an *in vitro* cell transformation assay, clastogenic in a cytogenetic assay using cultured human lymphocytes, and positive in mouse and rat micronucleus tests after repeated doses. It was negative in a cytogenetic study in rats given a single dose.

#### Impairment of Fertility:

**Lamivudine:** Lamivudine did not affect male or female fertility in rats at a dose associated with exposures approximately 130 times higher than the exposure in humans at the dose of 300 mg.

**Zidovudine:** Zidovudine, administered to male and female rats at doses up to 7 times the usual adult dose based on body surface area considerations, had no effect on fertility judged by conception rates.

### **13.2 Animal Toxicology and/or Pharmacology**

#### Lamivudine

Reproduction studies have been performed in rats and rabbits at orally administered doses up to 4,000 mg per kg per day and 1,000 mg per kg per day, respectively, producing plasma levels up to approximately 35 times that for the adult HIV dose. No evidence of teratogenicity due to lamivudine was observed. Evidence of early embryoletality was seen in the rabbit at exposure levels similar to those observed in humans, but there was no indication of this effect in the rat at exposure levels up to 35 times those in humans. Studies in pregnant rats and rabbits showed that lamivudine is transferred to the fetus through the placenta.

#### Zidovudine

Oral teratology studies in the rat and in the rabbit at doses up to 500 mg per kg per day revealed no evidence of teratogenicity with zidovudine. Zidovudine treatment resulted in embryo/fetal toxicity as evidenced by an increase in the incidence of fetal resorptions in rats given 150 or 450 mg per kg per day and rabbits given 500 mg per kg per day. The doses used in the teratology studies resulted in peak zidovudine plasma concentrations (after one-half of the daily dose) in rats 66 to 226 times, and in rabbits 12 to 87 times, mean steady-state peak human plasma concentrations (after one-sixth of the daily dose) achieved with the recommended daily dose (100 mg every 4 hours). In an *in vitro* experiment with fertilized mouse oocytes, zidovudine exposure resulted in a dose-dependent reduction in blastocyst formation. In an additional teratology study in rats, a dose of 3,000 mg per kg per day (very near the oral median lethal dose in rats of 3,683

mg per kg) caused marked maternal toxicity and an increase in the incidence of fetal malformations. This dose resulted in peak zidovudine plasma concentrations 350 times peak human plasma concentrations. (Estimated AUC in rats at this dose level was 300 times the daily AUC in humans given 600 mg per day.) No evidence of teratogenicity was seen in this experiment at doses of 600 mg per kg per day or less.

## 14 CLINICAL STUDIES

One lamivudine and zidovudine tablet given twice daily is an alternative regimen to lamivudine tablets 150 mg twice daily plus zidovudine 600 mg per day in divided doses.

### 14.1 Adults

The NUCB3007 (CAESAR) trial was conducted using lamivudine 150-mg tablets (150 mg twice daily) and zidovudine 100-mg capsules (2 x 100 mg 3 times daily). CAESAR was a multi-center, double-blind, placebo-controlled trial comparing continued current therapy (zidovudine alone [62% of subjects] or zidovudine with didanosine or zalcitabine [38% of subjects]) to the addition of lamivudine or lamivudine plus an investigational non-nucleoside reverse transcriptase inhibitor, randomized 1:2:1. A total of 1,816 HIV-1-infected adults with 25 to 250 (median 122) CD4 cells/mm<sup>3</sup> at baseline were enrolled: median age was 36 years, 87% were male, 84% were nucleoside-experienced, and 16% were therapy-naïve. The median duration on trial was 12 months. Results are summarized in Table 5.

**Table 5. Number of Subjects (%) with at Least 1 HIV-1 Disease-progression Event or Death**

Endpoint	Current Therapy (n=460)	Lamivudine plus Current Therapy (n = 896)	Lamivudine plus a NNRTI <sup>a</sup> plus Current Therapy (n = 460)
HIV-1 progression or death	90 (19.6%)	86 (9.6%)	41 (8.9%)
Death	27 (5.9%)	23 (2.6%)	14 (3 %)

<sup>a</sup>An investigational non-nucleoside reverse transcriptase inhibitor not approved in the United States.

### 14.2 Prevention of Maternal-Fetal HIV-1 Transmission

The utility of zidovudine alone for the prevention of maternal-fetal HIV-1 transmission was demonstrated in a randomized, double-blind, placebo-controlled trial conducted in HIV-1-infected pregnant women with CD4+ cell counts of 200 to 1,818 cells/mm<sup>3</sup> (median in the treated group: 560 cells/mm<sup>3</sup>) who had little or no previous exposure to zidovudine. Oral zidovudine was initiated between 14 and 34 weeks of gestation (median 11 weeks of therapy) followed by IV administration of zidovudine during labor and delivery. Following birth, neonates received oral zidovudine syrup for 6 weeks. The trial showed a statistically significant difference in the incidence of HIV-1 infection in the neonates (based on viral culture from peripheral blood) between the group receiving zidovudine and the group receiving placebo. Of 363 neonates evaluated in the trial, the estimated risk of HIV-1 infection was 7.8% in the group receiving zidovudine and 24.9% in the placebo group, a relative reduction in transmission risk of 68.7%. Zidovudine was well tolerated by mothers and infants. There was no difference in pregnancy-related

adverse events between the treatment groups.

## **16 HOW SUPPLIED/STORAGE AND HANDLING**

Lamivudine and Zidovudine Tablets, USP containing 150 mg lamivudine and 300 mg zidovudine, are white, film coated, capsule shaped tablets debossed with H and score line on one side and 2 on other side. They are available as follows:

NDC 68071-4450-6 BOTTLES OF 6

**Store at 20 to 25°C (68 to 77°F) [see USP Controlld Room Temperature]**

## **17 PATIENT COUNSELING INFORMATION**

### Neutropenia and Anemia

Inform patients that the important toxicities associated with zidovudine are neutropenia and/or anemia. Inform them of the extreme importance of having their blood counts followed closely while on therapy, especially for patients with advanced HIV-1 disease [see *Boxed Warnings, Warnings and Precautions ( 5.1)*].

### Myopathy

Inform patients that myopathy and myositis with pathological changes, similar to that produced by HIV-1 disease, have been associated with prolonged use of zidovudine [see *Warnings and Precautions ( 5.2)*].

### Lactic Acidosis/Hepatomegaly:

Inform patients that some HIV medicines, including lamivudine and zidovudine tablet, can cause a rare, but serious condition called lactic acidosis with liver enlargement (hepatomegaly) [see *Warnings and Precautions ( 5.3)*].

### Patients with Hepatitis B or C Co-infection

Advise patients co-infected with HIV-1 and HBV that worsening of liver disease has occurred in some cases when treatment with lamivudine was discontinued. Advise patients to discuss any changes in regimen with their physician [see *Warnings and Precautions ( 5.4)*].

Inform patients with HIV-1/HCV co-infection that hepatic decompensation (some fatal) has occurred in HIV-1/HCV co-infected patients receiving combination antiretroviral therapy for HIV-1 and interferon alfa with or without ribavirin [see *Warnings and Precautions ( 5.6)*].

### Related Products that are Not Recommended

Inform patients that they should not take lamivudine and zidovudine tablets with ATRIPLA<sup>®</sup>, COMPLERA<sup>®</sup>, DUTREBIS<sup>™</sup>, EMTRIVA<sup>®</sup>, EPIVIR-HBV<sup>®</sup>, EPZICOM<sup>®</sup>, STRIBILD<sup>®</sup>, TRIUMEQ<sup>®</sup>, TRIZIVIR<sup>®</sup>, or TRUVADA<sup>®</sup> [see *Warnings and Precautions ( 5.5)*].

### Drug Interactions

Caution patients about the use of other medications, including ganciclovir, interferon alfa, and ribavirin, which may exacerbate the toxicity of zidovudine [see *Drug Interactions (7.3)*].

### Immune Reconstitution Syndrome

In some patients with advanced HIV infection, signs and symptoms of inflammation from previous infections may occur soon after anti-HIV treatment is started. It is believed that these symptoms are due to an improvement in the body's immune response, enabling the body to fight infections that may have been present with no obvious symptoms. Advise patients to inform their healthcare provider immediately of any symptoms of infection [see *Warnings and Precautions ( 5.8)*].

### Redistribution/Accumulation of Body Fat

Inform patients that redistribution or accumulation of body fat may occur in patients receiving antiretroviral therapy and that the cause and long-term health effects of these conditions are not known at this time [see *Warnings and Precautions* ( 5.9)].

### Information about HIV-1 Infection

Lamivudine and Zidovudine tablet is not a cure for HIV-1 infection and patients may continue to experience illnesses associated with HIV-1 infection, including opportunistic infections. Patients must remain on continuous HIV therapy to control HIV-1 infection and decrease HIV-related illness. Inform patients that sustained decreases in plasma HIV-1 RNA have been associated with a reduced risk of progression to AIDS and death.

Advise patients to remain under the care of a physician when using lamivudine and zidovudine tablets.

Advise patients to take all HIV medications exactly as prescribed.

Advise patients to avoid doing things that can spread HIV-1 infection to others.

Advise patients not to re-use or share needles or other injection equipment.

Advise patients not to share personal items that can have blood or body fluids on them, like toothbrushes and razor blades.

Advise patients to always practice safer sex by using a latex or polyurethane condom to lower the chance of sexual contact with semen, vaginal secretions, or blood.

Female patients should be advised not to breastfeed. Mothers with HIV-1 should not breastfeed because HIV-1 can be passed to the baby in the breast milk.

Instruct patients that if they miss a dose, they should take it as soon as they remember. If they do not remember until it is time for the next dose, they should be instructed to skip the missed dose and go back to the regular schedule. Patients should not double their next dose or take more than the prescribed dose.

EPZICOM, TRIUMEQ, and TRIZIVIR are registered trademarks of the Viiv Healthcare group of companies.

The other brands listed are trademarks of their respective owners and are not trademarks of Hetero Labs Limited. The makers of these brands are not affiliated with and do not endorse Hetero Labs Limited or its products.

Manufactured for:



Camber Pharmaceuticals, Inc.

Piscataway, NJ 08854.

Manufactured by:

HETERO™

HETERO LABS LIMITED

22-110, I.D.A., Jeedimetla,  
Hyderabad – 500 055, India.

or

Manufactured by:

HETERO LABS LIMITED

Barcode



# NuCare Pharmaceuticals, Inc.

**Manufactured by:**  
Hietro Labs Limited Hyderabad-500 085, India

**Packaged by:**  
**NuCare Pharmaceuticals, Inc.**  
Orange, CA 92667

Call your doctor for medical advice about side effects.  
You may report side effects to FDA at 1-800-FDA-1088.

**Take every \_\_\_\_\_ times a day.**

**hours**

**68071445006-6-000000-000000**



**NDC 68071-4450-6**

**Lot #: 000000 Exp. Date: 00-00**

**Lamivudine 150mg/Zidovudine 300mg #6 Tablets**

Each film-coated tablet contains 150mg of Lamivudine USP and 300mg of Zidovudine USP

Capsule Shaped White Scored Tablet Debossed: 'H' on the scored side '2' on the other side

**Product #: P1908006**

**Rx Only**

**WARNING: KEEP OUT OF REACH OF CHILDREN. STORE AT CONTROLLED TEMPERATURE 68-77°F.**

**Lamivudine 150mg/Zidovudine 300mg #6 Tablets Exp Date: 00-00**

**NDC 68071-4450-06 AWP: \$933.61**

**Mfg NDC 31722-506-60**

**Lot #: 000000 Rx # 23023860**

**Lamivudine 150mg/Zidovudine 300mg #6 Tablets Exp Date: 00-00**

**NDC 68071-4450-06 AWP: \$933.61**

**Mfg NDC 31722-506-60**

**Lot #: 000000 Rx # 23023860**

**Lamivudine 150mg/Zidovudine 300mg #6 Tablets Exp Date: 00-00**

**NDC 68071-4450-06 AWP: \$933.61**

**Mfg NDC 31722-506-60**

**Lot #: 000000 Rx # 23023860**

## lamivudine and zidovudine tablet, film coated

Product Information			
Product Type	HUMAN PRESCRIPTION DRUG	Item Code (Source)	NDC:68071-4450(NDC:31722-506)
Route of Administration	ORAL		
Active Ingredient/Active Moiety			
Ingredient Name		Basis of Strength	Strength
LAMIVUDINE (UNII: 2T8Q726O95) (LAMIVUDINE - UNII:2T8Q726O95)		LAMIVUDINE	150 mg
ZIDOVUDINE (UNII: 4B9XT59T7S) (ZIDOVUDINE - UNII:4B9XT59T7S)		ZIDOVUDINE	300 mg
Inactive Ingredients			
Ingredient Name			Strength
CELLULOSE, MICROCRYSTALLINE (UNII: OP1R32D61U)			
SILICON DIOXIDE (UNII: ETJ7Z6XBU4)			
MAGNESIUM STEARATE (UNII: 70097M6I30)			
HYPROMELLOSES (UNII: 3NXW29V3WO)			
POLYETHYLENE GLYCOL, UNSPECIFIED (UNII: 3WJQ0SDW1A)			
POLYSORBATE 80 (UNII: 6OZP39ZG8H)			
TITANIUM DIOXIDE (UNII: 15FIX9V2JP)			
SODIUM STARCH GLYCOLATE TYPE A POTATO (UNII: 5856J3G2A2)			
Product Characteristics			
Color	white	Score	2 pieces
Shape	CAPSULE	Size	18mm
Flavor		Imprint Code	H:2

<b>Contains</b>				
<b>Packaging</b>				
<b>#</b>	<b>Item Code</b>	<b>Package Description</b>	<b>Marketing Start Date</b>	<b>Marketing End Date</b>
1	NDC:68071-4450-6	6 in 1 BOTTLE; Type 6: Drug/Biologic Combination	05/25/2018	
<b>Marketing Information</b>				
<b>Marketing Category</b>		<b>Application Number or Monograph Citation</b>	<b>Marketing Start Date</b>	<b>Marketing End Date</b>
ANDA		ANDA079124	09/18/2015	

**Labeler -** NuCare Pharmaceuticals,Inc. (010632300)

Establishment			
Name	Address	ID/FEI	Business Operations
NuCare Pharmaceuticals,Inc.		010632300	repack(68071-4450)

Revised: 1/2022

NuCare Pharmaceuticals,Inc.