

**ANTI DIARRHEAL- loperamide hydrochloride tablet, film coated**  
**Kroger Company**

-----  
**Kroger Co. Anti-Diarrheal Drug Facts**

**Active ingredient (in each caplet)**

Loperamide HCl 2 mg

**Purpose**

Anti-diarrheal

**Uses**

controls symptoms of diarrhea, including Travelers' Diarrhea

**Warnings**

Allergy alert: Do not use if you have ever had a rash or other allergic reaction to loperamide HCl

**Do not use**

if you have bloody or black stool

**Ask a doctor before use if you have**

- fever
- mucus in the stool
- a history of liver disease

**Ask a doctor or pharmacist before use if you are**  
taking antibiotics

**When using this product**

- tiredness, drowsiness or dizziness may occur. Be careful when driving or operating machinery.

**Stop use and ask a doctor if**

- symptoms get worse
- diarrhea lasts for more than 2 days
- you get abdominal swelling or bulging. These may be signs of a serious condition.

**If pregnant or breast-feeding,**

ask a health professional before use.

**Keep out of reach of children.**

In case of overdose, get medical help or contact a Poison Control Center right away. (1-800-222-1222)

## Directions

- drink plenty of clear fluids to help prevent dehydration caused by diarrhea
- find right dose on chart. If possible, use weight to dose; otherwise, use age.

adults and children 12 years and over	2 caplets after the first loose stool; 1 caplet after each subsequent loose stool; but no more than 4 caplets in 24 hours
children 9-11 years (60-95 lbs)	1 caplet after the first loose stool; 1/2 caplet after each subsequent loose stool; but no more than 3 caplets in 24 hours
children 6-8 years (48-59 lbs)	1 caplet after the first loose stool; 1/2 caplet after each subsequent loose stool; but no more than 2 caplets in 24 hours
children under 6 years (up to 47 lbs)	ask a doctor

## Other information

- store at 20°-25°C (68°-77°F)
- do not use if blister unit is broken or torn {For use on Blister Cartons Only}
- do not use if printed foil under cap is broken or missing {For use on Bottle Cartons Only}
- see end panel for lot number and expiration date {For use on Bottle Cartons Only}

## Inactive ingredients

anhydrous lactose, carnauba wax, D&C yellow no. 10 aluminum lake, FD&C blue no. 1 aluminum lake, hypromellose, magnesium stearate, microcrystalline cellulose, polyethylene glycol, pregelatinized starch

## Questions or comments?

1-800-632-6900

## Principal Display Panel

COMPARE TO the active ingredient of IMODIUM® A-D

See top panel

Loperamide Hydrochloride Tablets, 2 mg

Anti-Diarrheal

CONTROLS THE SYMPTOMS OF DIARRHEA

72 CAPLETS\*

\*each caplet (capsule-shaped tablet) contains 2 mg Loperamide Hydrochloride

actual size

DISTRIBUTED BY THE KROGER CO.  
CINCINNATI, OHIO 45202

QUALITY GUARANTEE  
www.kroger.com

\*\*Imodium® is a registered trademark of  
Johnson & Johnson, New Brunswick, NJ  
08933-7001. Johnson & Johnson is not affiliated  
with The Kroger Co. or this product.

**GLUTEN FREE**

COMPARE TO the active ingredient of  
**IMODIUM® A-D** \*\*See top panel

NDC 30142-998-23



FROM OUR FAMILY  
TO YOURS

Loperamide Hydrochloride  
Tablets, 2 mg

**Anti-Diarrheal**

CONTROLS THE SYMPTOMS OF DIARRHEA



**72**  
**CAPLETS\***

\*each caplet (capsule-shaped tablet)  
contains 2 mg Loperamide Hydrochloride



actual size

### Drug Facts

Active ingredient (in each caplet)	Purpose
Loperamide HCl 2 mg.....	Anti-diarrheal

**Use** controls symptoms of diarrhea, including  
Travelers' Diarrhea

### Warnings

**Allergy alert:** Do not use if you have ever had a  
rash or other allergic reaction to loperamide HCl

**Do not use** if you have bloody or black stool

**Ask a doctor before use if you have**

- fever
- mucus in the stool
- a history of liver disease

**Ask a doctor or pharmacist before use if you  
are taking antibiotics**

**When using this product**

- tiredness, drowsiness or dizziness may  
occur. Be careful when driving or operating  
machinery.

**Stop use and ask a doctor if**

- symptoms get worse
- diarrhea lasts for more than 2 days
- you get abdominal swelling or bulging.  
These may be signs of a serious condition.

**If pregnant or breast-feeding,** ask a health  
professional before use.

**Keep out of reach of children.** In case of  
overdose, get medical help or contact a Poison  
Control Center right away. (1-800-222-1222) ▶

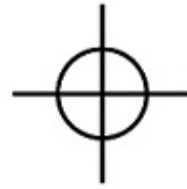


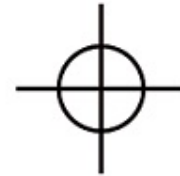
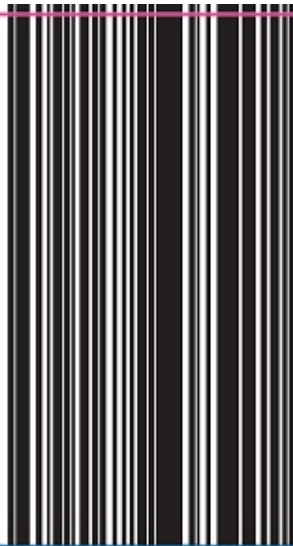


**LOT NO.**

**EXP.**

: 22423 45 C2





**Drug Facts** (continued)

**Directions**

- drink plenty of clear fluids to help prevent dehydration caused by diarrhea
- find right dose on chart. If possible, use weight to dose; otherwise, use age.

adults and children 12 years and over	2 caplets after the first loose stool; 1 caplet after each subsequent loose stool; but no more than 4 caplets in 24 hours
children 9-11 years (60-95 lbs)	1 caplet after the first loose stool; 1/2 caplet after each subsequent loose stool; but no more than 3 caplets in 24 hours
children 6-8 years (48-59 lbs)	1 caplet after the first loose stool; 1/2 caplet after each subsequent loose stool; but no more than 2 caplets in 24 hours
children under 6 years (up to 47 lbs)	ask a doctor

**Other information**

- store at 20°-25°C (68°-77°F)
- do not use if printed foil under cap is broken or missing
- see end panel for lot number and expiration date

**Inactive ingredients** anhydrous lactose, carnauba wax, D&C yellow no. 10 aluminum lake, FD&C blue no. 1 aluminum lake, hypromellose, magnesium stearate, microcrystalline cellulose, polyethylene glycol, pregelatinized starch ▶

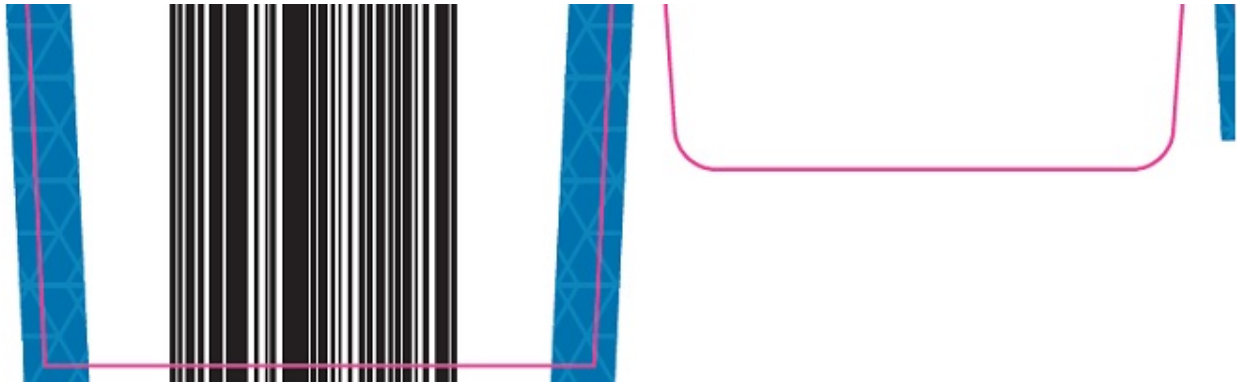
**Drug Facts** (continued)

**Questions or comments?**

1-800-632-6900

**ACTUAL SIZE**





## ANTI DIARRHEAL

loperamide hydrochloride tablet, film coated

### Product Information

<b>Product Type</b>	HUMAN OTC DRUG LABEL	<b>Item Code (Source)</b>	NDC:30142-998
<b>Route of Administration</b>	ORAL	<b>DEA Schedule</b>	

### Active Ingredient/Active Moiety

Ingredient Name	Basis of Strength	Strength
LOPERAMIDE HYDROCHLORIDE (LOPERAMIDE)	LOPERAMIDE HYDROCHLORIDE	2 mg

### Inactive Ingredients

Ingredient Name	Strength
ANHYDROUS LACTOSE	
CARNAUBA WAX	
HYPROMELLOSES	
MAGNESIUM STEARATE	
CELLULOSE, MICROCRYSTALLINE	
POLYETHYLENE GLYCOLS	

### Product Characteristics

<b>Color</b>	GREEN	<b>Score</b>	2 pieces
<b>Shape</b>	CAPSULE	<b>Size</b>	10mm
<b>Flavor</b>		<b>Imprint Code</b>	L2
<b>Contains</b>			

### Packaging

#	Item Code	Package Description	Marketing Start Date	Marketing End Date
1	NDC:30142-998-53	12 in 1 CARTON		
1		1 in 1 BLISTER PACK		
2	NDC:30142-998-62	24 in 1 CARTON		
2		1 in 1 BLISTER PACK		

3	NDC:30 142-998-67	1 in 1 CARTON		
3		48 in 1 BOTTLE		
4	NDC:30 142-998-23	1 in 1 CARTON		
4		72 in 1 BOTTLE		

### Marketing Information

Marketing Category	Application Number or Monograph Citation	Marketing Start Date	Marketing End Date
ANDA	ANDA075232	02/21/2003	

**Labeler** - Kroger Company (006999528)

Revised: 3/2014

Kroger Company