

NIGHTTIME SLEEP AID- doxylamine succinate tablet
Wal-Mart Stores Inc

Equate 44-386

Active ingredient (in each tablet)

Doxylamine succinate 25 mg

Purpose

Nighttime sleep-aid

Use

helps to reduce difficulty in falling asleep

Warnings

Ask a doctor before use if you have

- glaucoma
- a breathing problem such as asthma, emphysema or chronic bronchitis
- trouble urinating due to an enlarged prostate gland

Ask a doctor or pharmacist before use if you are

- taking any other drugs

When using this product

- avoid alcoholic beverages
- take only at bedtime

Stop use and ask a doctor if

sleeplessness persists continuously for more than two weeks. Insomnia may be a symptom of a serious underlying medical illness.

If pregnant or breast-feeding,

ask a health professional before use.

Keep out of reach of children.

In case of overdose, get medical help or contact a Poison Control Center (1-800-222-1222) right away.

Directions

- adults: take one tablet 30 minutes before going to bed; take once daily or as directed by a doctor
- do not give to children under 12 years of age

Other information

- **TAMPER EVIDENT: DO NOT USE IF OUTER PACKAGE IS OPENED OR BLISTER IS TORN OR BROKEN**
- store at controlled room temperature 20°-25°C (68°-77°F)

- see end flap for expiration date and lot number

Inactive ingredients

dicalcium phosphate, FD&C blue #1 aluminum lake, magnesium stearate, microcrystalline cellulose, sodium starch glycolate

Questions?

1-888-287-1915

Principal display panel

NDC 49035-863-27

equate®

Compare to Unisom® SleepTabs® Active Ingredient*

Doxylamine Succinate Tablets, 25 mg

Nighttime

Sleep Aid

Safe and Proven Effective

Fall Asleep Fast

Just One Tablet Per Dose

25 mg

32 TABLETS

Distributed by: Wal-Mart Stores, Inc.,
Bentonville, AR 72716 ©Wal-Mart Stores, Inc.

*This product is not manufactured or distributed by McNeil Consumer Healthcare, owner of the registered trademark Unisom® SleepTabs®.

50844 REV0513B38627

**TAMPER EVIDENT: DO NOT USE IF CARTON IS OPENED OR IF BLISTER UNIT IS
TORN, BROKEN OR SHOWS ANY SIGNS OF TAMPERING**

equate[®]

Nighttime Sleep Aid
Doxylamine Succinate Tablets, 25 mg

**TAMPER EVIDENT: DO NOT USE IF
CARTON IS OPENED OR IF BLISTER
UNIT IS TORN, BROKEN OR SHOWS
ANY SIGNS OF TAMPERING**

50844 REV0913039627
© Wal-Mart Stores, Inc.
This product is not manufactured or distributed by Wal-Mart Stores, Inc.
Distributed by: Wal-Mart Stores, Inc., Bentonville, AR 72716

Satisfaction guaranteed - Or we'll
replace it or give you your money
back. For questions or comments or
to report an undesired reaction or
side effect, please call 1-888-287-1915.



Questions? 1-888-287-1915

Inactive ingredients FD&C blue #1 aluminum lake, magnesium stearate, microcrystalline cellulose, sodium starch glycolate.

Other information

- see end flap for expiration date and lot number (68-77F)
- store at controlled room temperature 20°-25°C
- TAMPER EVIDENT: DO NOT USE IF OUTER PACKAGE IS OPENED OR BLISTER IS TORN OR BROKEN

Directions

- adults: take one tablet 30 minutes before going to bed; take once daily or as directed by a doctor
- do not give to children under 12 years of age

Drug Facts (continued)

Drug Facts
Active ingredient (in each tablet) Doxylamine succinate 25 mg. Nighttime sleep-aid

Purpose Use helps to reduce difficulty in falling asleep

Warnings

- Ask a doctor before use if you have
- glaucoma
- a breathing problem such as asthma, emphysema or chronic bronchitis
- trouble urinating due to an enlarged prostate gland

When using this product

- Ask a doctor or pharmacist before use if you are taking any other drugs.
- avoid alcoholic beverages
- take only at bedtime

Stop use and ask a doctor if sleeplessness persists continuously for more than two weeks. Insomnia may be a symptom of a serious underlying medical illness.

If pregnant or breast-feeding, ask a health professional before use.

Keep out of reach of children. In case of overdose, get medical help or contact a Poison Control Center (1-800-222-1222) right away.

equate[®]
Doxylamine Succinate
Tablets, 25 mg
Nighttime Sleep Aid
Fall Asleep Fast



KEEP OUTER PACKAGE FOR COMPLETE PRODUCT INFORMATION

equate[®]

**Doxylamine Succinate
Tablets, 25 mg
Nighttime Sleep Aid
Fall Asleep Fast**

B-2203-396-27
REV0913039627

equate[®]

Doxylamine Succinate Tablets, 25 mg

**Nighttime
Sleep Aid**

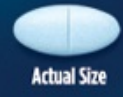
Safe and Proven Effective

Fall Asleep Fast

Compare
to Unisom[®]
SleepTabs[®]
Active
Ingredient*

Just One Tablet Per Dose

**25
mg** **32
TABLETS**



Actual Size

NDC 49075-963-27



Equate 44-386

NIGHTTIME SLEEP AID

doxylamine succinate tablet

Product Information

Product Type	HUMAN OTC DRUG LABEL	Item Code (Source)	NDC:49035-863
Route of Administration	ORAL	DEA Schedule	

Active Ingredient/Active Moiety

Ingredient Name	Basis of Strength	Strength
DOXYLAMINE SUCCINATE (DOXYLAMINE)	DOXYLAMINE SUCCINATE	25 mg

Inactive Ingredients

Ingredient Name	Strength
CALCIUM PHOSPHATE, DIBASIC, ANHYDROUS	
FD&C BLUE NO. 1	
MAGNESIUM STEARATE	
CELLULOSE, MICROCRYSTALLINE	
SODIUM STARCH GLYCOLATE TYPE A POTATO	

Product Characteristics

Color	BLUE	Score	2 pieces
Shape	CAPSULE	Size	10mm
Flavor		Imprint Code	44;386
Contains			

Packaging

#	Item Code	Package Description	Marketing Start Date	Marketing End Date
1	NDC:49035-863-27	1 in 1 CARTON		
1		32 in 1 BLISTER PACK		

Marketing Information

Marketing Category	Application Number or Monograph Citation	Marketing Start Date	Marketing End Date
ANDA	ANDA040564	04/11/2002	

Labeler - Wal-Mart Stores Inc (051957769)

Establishment

Name	Address	ID/FEI	Business Operations
LNK International, Inc.		038154464	PACK(49035-863)

Establishment

Name	Address	ID/FEI	Business Operations
LNK International, Inc.		832867894	MANUFACTURE(49035-863)

Revised: 3/2013

Wal-Mart Stores Inc