

PRAMIPEXOLE DIHYDROCHLORIDE- pramipexole dihydrochloride tablet
Mylan Pharmaceuticals Inc.

HIGHLIGHTS OF PRESCRIBING INFORMATION

These highlights do not include all the information needed to use pramipexole dihydrochloride tablets safely and effectively. See full prescribing information for pramipexole dihydrochloride tablets.

Pramipexole Dihydrochloride Tablets for oral administration

Initial U.S. Approval: 1997

RECENT MAJOR CHANGES -----

Warnings and Precautions: Retinal Pathology (5.8) 8/2012

INDICATIONS AND USAGE -----

Pramipexole is a non-ergot dopamine agonist indicated for the treatment of the signs and symptoms of idiopathic Parkinson's disease (PD) (1.1)

DOSAGE AND ADMINISTRATION -----

| Parkinson's Disease-Normal Renal Function* (2.2) | | |
|---|--------------------|------------------------------|
| Week | Dosage (mg) | Total Daily Dose (mg) |
| 1 | 0.125 TID | 0.375 |
| 2 | 0.25 TID | 0.75 |
| 3 | 0.5 TID | 1.5 |
| 4 | 0.75 TID | 2.25 |
| 5 | 1 TID | 3 |
| 6 | 1.25 TID | 3.75 |
| 7 | 1.5 TID | 4.5 |

* Doses should not be increased more frequently than every 5 to 7 days. Titrate to effective dose. If used with levodopa, may need to reduce levodopa dose.

| Parkinson's Disease-Impaired Renal Function (2.2) | | |
|--|---------------------------|--------------------------|
| Creatinine Clearance | Starting Dose (mg) | Maximum Dose (mg) |
| > 50 mL/min | 0.125 TID | 1.5 TID |
| 30 to 50 mL/min | 0.125 BID | 0.75 TID |
| 15 to 30 mL/min | 0.125 QD | 1.5 QD |
| < 15 mL/min and hemodialysis patients | | Data not available |

DOSAGE FORMS AND STRENGTHS -----

Tablets: 0.125 mg, 0.25 mg, 0.5 mg, 0.75 mg, 1 mg and 1.5 mg (3).

CONTRAINDICATIONS -----

None (4)

WARNINGS AND PRECAUTIONS -----

- Falling asleep during activities of daily living: Sudden onset of sleep may occur without warning. Advise patients to report symptoms to the prescriber. (5.1)
- Symptomatic orthostatic hypotension. Monitor during dose escalation (5.2)
- Impulse control/Compulsive behaviors: Patients may experience compulsive behaviors and other intense urges (5.3)
- Hallucinations: May occur. Risk increases with age. (5.4)
- Dyskinesia: May be caused or exacerbated by pramipexole (5.5)
- Renal Impairment: Requires dose reduction (2.2, 12.3)
- Events reported with dopaminergic therapy: Include withdrawal-emergent hyperpyrexia and confusion, fibrotic complications and melanoma (5.9)

ADVERSE REACTIONS -----

Most common adverse events (incidence > 5% and greater than placebo):

- Early PD without levodopa: nausea, dizziness, somnolence, insomnia, constipation, asthenia and hallucinations (6.1).

- Advanced PD with levodopa: postural (orthostatic) hypotension, dyskinesia, extrapyramidal syndrome, insomnia, dizziness, hallucinations, accidental injury, dream abnormalities, confusion, constipation, asthenia, somnolence, dystonia, gait abnormality, hypertonia, dry mouth, amnesia and urinary frequency (6.1).

To report SUSPECTED ADVERSE REACTIONS, contact Mylan Pharmaceuticals Inc. at 1-877-446-3679 (1-877-4-INFO-RX) or FDA at 1-800-FDA-1088 or www.fda.gov/medwatch.

----- **DRUG INTERACTIONS** -----

Dopamine antagonists may diminish the effectiveness of pramipexole (7.1).

----- **USE IN SPECIFIC POPULATIONS** -----

Pregnancy: Based on animal data, may cause fetal harm (8.1).

Pediatric use: Safety and effectiveness in pediatric patients have not been established (8.4)

See 17 for PATIENT COUNSELING INFORMATION and FDA-approved patient labeling.

Revised: 9/2013

FULL PRESCRIBING INFORMATION: CONTENTS*

1 INDICATIONS AND USAGE

1.1 Parkinson's Disease

2 DOSAGE AND ADMINISTRATION

2.1 General Dosing Considerations

2.2 Parkinson's Disease

3 DOSAGE FORMS AND STRENGTHS

4 CONTRAINDICATIONS

5 WARNINGS AND PRECAUTIONS

5.1 Falling Asleep During Activities of Daily Living

5.2 Symptomatic Orthostatic Hypotension

5.3 Impulse Control/Compulsive Behaviors

5.4 Hallucinations

5.5 Dyskinesia

5.6 Renal Impairment

5.7 Rhabdomyolysis

5.8 Retinal Pathology

5.9 Events Reported with Dopaminergic Therapy

6 ADVERSE REACTIONS

6.1 Clinical Trials Experience

6.2 Post-Marketing Experience

7 DRUG INTERACTIONS

7.1 Dopamine Antagonists

7.2 Drug/Laboratory Test Interactions

8 USE IN SPECIFIC POPULATIONS

8.1 Pregnancy

8.3 Nursing Mothers

8.4 Pediatric Use

8.5 Geriatric Use

8.6 Patients with Renal Impairment

9 DRUG ABUSE AND DEPENDENCE

9.1 Controlled Substance

9.2 Abuse and Dependence

10 OVERDOSAGE

11 DESCRIPTION

12 CLINICAL PHARMACOLOGY

12.1 Mechanism of Action

12.2 Pharmacodynamics

12.3 Pharmacokinetics

13 NONCLINICAL TOXICOLOGY

13.1 Carcinogenesis, Mutagenesis, Impairment of Fertility

13.2 Animal Toxicology and/or Pharmacology

14 CLINICAL STUDIES

14.1 Parkinson's Disease

16 HOW SUPPLIED/STORAGE AND HANDLING

17 PATIENT COUNSELING INFORMATION

17.1 Dosing Instructions

17.2 Sedating Effects

17.3 Impulse Control Symptoms Including Compulsive Behaviors

17.4 Hallucinations

17.5 Postural (Orthostatic) Hypotension

17.6 Pregnancy

17.7 Nursing Mothers

* Sections or subsections omitted from the full prescribing information are not listed.

FULL PRESCRIBING INFORMATION

1 INDICATIONS AND USAGE

1.1 Parkinson's Disease

Pramipexole dihydrochloride tablets are indicated for the treatment of the signs and symptoms of idiopathic Parkinson's disease.

2 DOSAGE AND ADMINISTRATION

2.1 General Dosing Considerations

Pramipexole dihydrochloride tablets are taken orally, with or without food.

If a significant interruption in therapy with pramipexole dihydrochloride tablets has occurred, retitration of therapy may be warranted.

2.2 Parkinson's Disease

In all clinical studies, dosage was initiated at a subtherapeutic level to avoid intolerable adverse effects and orthostatic hypotension. Pramipexole dihydrochloride tablets should be titrated gradually in all patients. The dose should be increased to achieve a maximum therapeutic effect, balanced against the principal side effects of dyskinesia, hallucinations, somnolence and dry mouth.

Dosing in Patients with Normal Renal Function

Initial Treatment

Doses should be increased gradually from a starting dose of 0.375 mg/day given in three divided doses and should not be increased more frequently than every 5 to 7 days. A suggested ascending dosage schedule that was used in clinical studies is shown in the following table:

Table 1 Ascending Dosage Schedule of Pramipexole Dihydrochloride Tablets for Parkinson's

Disease

| Week | Dosage (mg) | Total Daily Dose (mg) |
|------|-------------|-----------------------|
| 1 | 0.125 TID | 0.375 |
| 2 | 0.25 TID | 0.75 |
| 3 | 0.5 TID | 1.50 |
| 4 | 0.75 TID | 2.25 |
| 5 | 1 TID | 3 |
| 6 | 1.25 TID | 3.75 |
| 7 | 1.5 TID | 4.50 |

Maintenance Treatment

Pramipexole dihydrochloride tablets were effective and well tolerated over a dosage range of 1.5 to 4.5 mg/day administered in equally divided doses 3 times per day with or without concomitant levodopa (approximately 800 mg/day).

In a fixed dose study in early Parkinson's disease patients, doses of 3 mg, 4.5 mg and 6 mg per day of pramipexole dihydrochloride tablets were not shown to provide any significant benefit beyond that achieved at a daily dose of 1.5 mg/day. However, in the same fixed dose study, the following adverse events were dose related: postural hypotension, nausea, constipation, somnolence and amnesia. The frequency of these events was generally 2-fold greater than placebo for pramipexole doses greater than 3 mg/day. The incidence of somnolence reported with pramipexole at a dose of 1.5 mg/day was comparable to placebo.

When pramipexole dihydrochloride tablets are used in combination with levodopa, a reduction of the levodopa dosage should be considered. In a controlled study in advanced Parkinson's disease, the dosage of levodopa was reduced by an average of 27% from baseline.

Dosing in Patients with Renal Impairment

Table 2 Dosing of Pramipexole Dihydrochloride Tablets in Parkinson's Disease Patients with Renal Impairment

| Renal Status | Starting Dose (mg) | Maximum Dose (mg) |
|--|---|-------------------|
| Normal to Mild Impairment (creatinine Cl > 50 mL/min) | 0.125 TID | 1.5 TID |
| Moderate Impairment (creatinine Cl = 30 to 50 mL/min) | 0.125 BID | 0.75 TID |
| Severe Impairment (creatinine Cl = 15 to < 30 mL/min) | 0.125 QD | 1.5 QD |
| Very Severe Impairment (creatinine Cl < 15 mL/min and hemodialysis patients) | The use of pramipexole dihydrochloride tablets has not been adequately studied in this group of patients. | |

Discontinuation of Treatment

Pramipexole dihydrochloride tablets should be tapered off at a rate of 0.75 mg per day until the daily dose has been reduced to 0.75 mg. Thereafter, the dose should be reduced by 0.375 mg per day. In some studies, however, abrupt discontinuation was uneventful.

3 DOSAGE FORMS AND STRENGTHS

- 0.125 mg: white to off-white, round, unscored tablets debossed with **M** on one side of the tablet

and **X4** on the other side

- 0.25 mg: light orange, round tablets debossed with **M** on one side of the tablet and **X** to the left of the score and **5** to the right of the score on the other side.
- 0.5 mg: light blue, round tablets debossed with **M** on one side of the tablet and **X** to the left of the score and **7** to the right of the score on the other side.
- 0.75 mg: light gray, round, unscored tablets debossed with **M** on one side of the tablet and **X13** on the other side.
- 1 mg: beige, round tablets debossed with **M** on one side of the tablet and **X** to the left of the score and **11** to the right of the score on the other side.
- 1.5 mg: light lavender, round tablets debossed with **M** on one side of the tablet and **X** to the left of the score and **12** to the right of the score on the other side.

4 CONTRAINDICATIONS

None.

5 WARNINGS AND PRECAUTIONS

5.1 Falling Asleep During Activities of Daily Living

Patients treated with pramipexole have reported falling asleep while engaged in activities of daily living, including the operation of motor vehicles which sometimes resulted in accidents. Although many of these patients reported somnolence while on pramipexole tablets, some perceived that they had no warning signs such as excessive drowsiness, and believed that they were alert immediately prior to the event. Some of these events had been reported as late as one year after the initiation of treatment.

Somnolence is a common occurrence in patients receiving pramipexole at doses above 1.5 mg/day (0.5 mg TID) for Parkinson's disease. Many clinical experts believe that falling asleep while engaged in activities of daily living always occurs in a setting of preexisting somnolence, although patients may not give such a history. For this reason, prescribers should continually reassess patients for drowsiness or sleepiness, especially since some of the events occur well after the start of treatment. Prescribers should also be aware that patients may not acknowledge drowsiness or sleepiness until directly questioned about drowsiness or sleepiness during specific activities.

Before initiating treatment with pramipexole, advise patients of the potential to develop drowsiness and specifically asked about factors that may increase the risk with pramipexole such as the use of concomitant sedating medications or alcohol, the presence of sleep disorders and concomitant medications that increase pramipexole plasma levels (e.g., cimetidine) [see *Clinical Pharmacology* (12.3)]. If a patient develops significant daytime sleepiness or episodes of falling asleep during activities that require active participation (e.g., conversations, eating, etc.), pramipexole should ordinarily be discontinued. If a decision is made to continue pramipexole, advise patients not to drive and to avoid other potentially dangerous activities. While dose reduction reduces the degree of somnolence, there is insufficient information to establish that dose reduction will eliminate episodes of falling asleep while engaged in activities of daily living.

5.2 Symptomatic Orthostatic Hypotension

Dopamine agonists, in clinical studies and clinical experience, appear to impair the systemic regulation of blood pressure, with resulting orthostatic hypotension, especially during dose escalation. Parkinson's disease patients, in addition, appear to have an impaired capacity to respond to an orthostatic challenge. For these reasons, Parkinson's disease patients being treated with dopaminergic agonists ordinarily require careful monitoring for signs and symptoms of orthostatic hypotension, especially during dose escalation, and should be informed of this risk [see *Patient Counseling Information* (17.5)].

In clinical trials of pramipexole, however, and despite clear orthostatic effects in normal volunteers, the reported incidence of clinically significant orthostatic hypotension was not greater among those assigned to pramipexole tablets than among those assigned to placebo. This result, especially with the higher doses used in Parkinson's disease, is clearly unexpected in light of the previous experience with the risks of dopamine agonist therapy.

While this finding could reflect a unique property of pramipexole, it might also be explained by the conditions of the study and the nature of the population enrolled in the clinical trials. Patients were very carefully titrated, and patients with active cardiovascular disease or significant orthostatic hypotension at baseline were excluded.

5.3 Impulse Control/Compulsive Behaviors

Case reports and the results of a cross-sectional study suggest that patients can experience intense urges to gamble, increased sexual urges, intense urges to spend money uncontrollably, binge eating and/or other intense urges and the inability to control these urges while taking one or more of the medications, including pramipexole, that increase central dopaminergic tone and that are generally used for the treatment of Parkinson's disease. In some cases, although not all, these urges were reported to have stopped when the dose was reduced or the medication was discontinued. Because patients may not recognize these behaviors as abnormal it is important for prescribers to specifically ask patients or their caregivers about the development of new or increased gambling urges, sexual urges, uncontrolled spending or other urges while being treated with pramipexole. Physicians should consider dose reduction or stopping the medication if a patient develops such urges while taking pramipexole [*see Patient Counseling Information (17.3)*].

5.4 Hallucinations

In the three double-blind, placebo-controlled trials in early Parkinson's disease, hallucinations were observed in 9% (35 of 388) of patients receiving pramipexole, compared with 2.6% (6 of 235) of patients receiving placebo. In the four double-blind, placebo-controlled trials in advanced Parkinson's disease, where patients received pramipexole and concomitant levodopa, hallucinations were observed in 16.5% (43 of 260) of patients receiving pramipexole compared with 3.8% (10 of 264) of patients receiving placebo. Hallucinations were of sufficient severity to cause discontinuation of treatment in 3.1% of the early Parkinson's disease patients and 2.7% of the advanced Parkinson's disease patients compared with about 0.4% of placebo patients in both populations.

Age appears to increase the risk of hallucinations attributable to pramipexole. In the early Parkinson's disease patients, the risk of hallucinations was 1.9 times greater than placebo in patients younger than 65 years and 6.8 times greater than placebo in patients older than 65 years. In the advanced Parkinson's disease patients, the risk of hallucinations was 3.5 times greater than placebo in patients younger than 65 years and 5.2 times greater than placebo in patients older than 65 years.

5.5 Dyskinesia

Pramipexole may potentiate the dopaminergic side effects of levodopa and may cause or exacerbate preexisting dyskinesia.

5.6 Renal Impairment

Since pramipexole is eliminated through the kidneys, caution should be exercised when prescribing pramipexole to patients with renal impairment [*see Dosage and Administration (2), Use in Specific Populations (8.6) and Clinical Pharmacology (12.3)*].

5.7 Rhabdomyolysis

A single case of rhabdomyolysis occurred in a 49 year old male with advanced Parkinson's disease treated with pramipexole. The patient was hospitalized with an elevated CPK (10,631 IU/L). The symptoms resolved with discontinuation of the medication.

5.8 Retinal Pathology

Human Data

A 2-year open-label, randomized, parallel-group safety study of retinal deterioration and vision compared pramipexole tablets and immediate-release ropinirole. Two hundred thirty four Parkinson's disease patients (115 on pramipexole, mean dose 3 mg/day and 119 on ropinirole, mean dose 9.5 mg/day) were evaluated using a panel of clinical ophthalmological assessments. Of 234 patients who were evaluable, 196 had been treated for 2 years and 29 were judged to have developed clinical abnormalities that were considered meaningful (19 patients in each treatment arm had received treatment for less than 2 years). There was no statistical difference in retinal deterioration between the treatment arms; however, the study was only capable of detecting a very large difference between treatments. In addition, because the study did not include an untreated comparison group (placebo treated), it is unknown whether the findings reported in patients treated with either drug are greater than the background rate in an aging population.

Animal Data

Pathologic changes (degeneration and loss of photoreceptor cells) were observed in the retina of albino rats in the 2-year carcinogenicity study. While retinal degeneration was not diagnosed in pigmented rats treated for 2 years, a thinning in the outer nuclear layer of the retina was slightly greater in rats given drug compared with controls. Evaluation of the retinas of albino mice, monkeys and minipigs did not reveal similar changes. The potential significance of this effect in humans has not been established, but cannot be disregarded because disruption of a mechanism that is universally present in vertebrates (i.e., disk shedding) may be involved [*see Nonclinical Toxicology (13.2)*].

5.9 Events Reported with Dopaminergic Therapy

Although the events enumerated below may not have been reported in association with the use of pramipexole in its development program, they are associated with the use of other dopaminergic drugs. The expected incidence of these events, however, is so low that even if pramipexole caused these events at rates similar to those attributable to other dopaminergic therapies, it would be unlikely that even a single case would have occurred in a cohort of the size exposed to pramipexole in studies to date.

Withdrawal-Emergent Hyperpyrexia and Confusion

Although not reported with pramipexole in the clinical development program, a symptom complex resembling the neuroleptic malignant syndrome (characterized by elevated temperature, muscular rigidity, altered consciousness and autonomic instability), with no other obvious etiology, has been reported in association with rapid dose reduction, withdrawal of or changes in antiparkinsonian therapy.

Fibrotic Complications

Cases of retroperitoneal fibrosis, pulmonary infiltrates, pleural effusion, pleural thickening, pericarditis and cardiac valvulopathy have been reported in patients treated with ergot-derived dopaminergic agents. While these complications may resolve when the drug is discontinued, complete resolution does not always occur.

Although these adverse events are believed to be related to the ergoline structure of these compounds, whether other, nonergot derived dopamine agonists can cause them is unknown.

Cases of possible fibrotic complications, including peritoneal fibrosis, pleural fibrosis and pulmonary fibrosis have been reported in the post-marketing experience with pramipexole. While the evidence is not sufficient to establish a causal relationship between pramipexole and these fibrotic complications, a contribution of pramipexole cannot be completely ruled out.

Melanoma

Epidemiological studies have shown that patients with Parkinson's disease have a higher risk (2- to approximately 6-fold higher) of developing melanoma than the general population. Whether the observed increased risk was due to Parkinson's disease or other factors, such as drugs used to treat Parkinson's disease, is unclear.

For the reasons stated above, patients and providers are advised to monitor for melanomas frequently and on a regular basis when using pramipexole for *any* indication. Ideally, periodic skin examinations should be performed by appropriately qualified individuals (e.g., dermatologists).

6 ADVERSE REACTIONS

The following adverse reactions are discussed in greater detail in other sections of the labeling:

- Falling Asleep During Activities of Daily Living [*see Warnings and Precautions (5.1)*].
- Symptomatic Orthostatic Hypotension [*see Warnings and Precautions (5.2)*].
- Impulse Control/Compulsive Behaviors [*see Warnings and Precautions (5.3)*].
- Hallucinations [*see Warnings and Precautions (5.4)*].
- Dyskinesia [*see Warnings and Precautions (5.5)*].
- Renal Impairment [*see Warnings and Precautions (5.6)*].
- Rhabdomyolysis [*see Warnings and Precautions (5.7)*].
- Retinal Pathology [*see Warnings and Precautions (5.8)*].
- Events Reported with Dopaminergic Therapy [*see Warnings and Precautions (5.9)*].

6.1 Clinical Trials Experience

Because clinical trials are conducted under widely varying conditions, adverse event rates observed in the clinical trials of a drug cannot be directly compared to rates in the clinical trials of another drug and may not reflect the rates observed in clinical practice.

Parkinson's Disease

During the premarketing development of pramipexole, patients with either early or advanced Parkinson's disease were enrolled in clinical trials. Apart from the severity and duration of their disease, the two populations differed in their use of concomitant levodopa therapy. Patients with early disease did not receive concomitant levodopa therapy during treatment with pramipexole; those with advanced Parkinson's disease all received concomitant levodopa treatment. Because these two populations may have differential risks for various adverse events, this section will, in general, present adverse event data for these two populations separately.

Because the controlled trials performed during premarketing development all used a titration design, with a resultant confounding of time and dose, it was impossible to adequately evaluate the effects of dose on the incidence of adverse events.

Early Parkinson's Disease

In the three double-blind, placebo-controlled trials of patients with early Parkinson's disease, the most commonly observed adverse events (> 5%) that were numerically more frequent in the group treated with pramipexole were nausea, dizziness, somnolence, insomnia, constipation, asthenia and hallucinations.

Approximately 12% of 388 patients with early Parkinson's disease and treated with pramipexole who participated in the double-blind, placebo-controlled trials discontinued treatment due to adverse events compared with 11% of 235 patients who received placebo. The adverse events most commonly causing discontinuation of treatment were related to the nervous system (hallucinations [3.1% on pramipexole vs.

0.4% on placebo]; dizziness [2.1% on pramipexole vs. 1% on placebo]; somnolence [1.6% on pramipexole vs. 0% on placebo]; extrapyramidal syndrome [1.6% on pramipexole vs. 6.4% on placebo]; headache and confusion [1.3% and 1%, respectively, on pramipexole vs. 0% on placebo]); and gastrointestinal system (nausea [2.1% on pramipexole vs. 0.4% on placebo]).

Adverse Event Incidence in Controlled Clinical Studies in Early Parkinson's Disease

Table 3 lists treatment-emergent adverse events that occurred in the double-blind, placebo-controlled studies in early Parkinson's disease that were reported by $\geq 1\%$ of patients treated with pramipexole and were numerically more frequent than in the placebo group. In these studies, patients did not receive concomitant levodopa. Adverse events were usually mild or moderate in intensity.

The prescriber should be aware that these figures cannot be used to predict the incidence of adverse events in the course of usual medical practice where patient characteristics and other factors differ from those that prevailed in the clinical studies. Similarly, the cited frequencies cannot be compared with figures obtained from other clinical investigations involving different treatments, uses and investigators. However, the cited figures do provide the prescribing physician with some basis for estimating the relative contribution of drug and nondrug factors to the adverse event incidence rate in the population studied.

Table 3 Treatment-Emergent Adverse Event* Incidence in Double-Blind, Placebo-Controlled Trials in Early Parkinson's Disease (Events $\geq 1\%$ of Patients Treated with Pramipexole and Numerically More Frequent than in the Placebo Group)

| Body System/ Adverse Event | Pramipexole (N=388) % | Placebo (N=235) % |
|---|-----------------------------|-------------------------|
| Body as a Whole | | |
| Asthenia | 14 | 12 |
| General Edema | 5 | 3 |
| Malaise | 2 | 1 |
| Reaction Unevaluable | 2 | 1 |
| Fever | 1 | 0 |
| Digestive System | | |
| Nausea | 28 | 18 |
| Constipation | 14 | 6 |
| Anorexia | 4 | 2 |
| Dysphagia | 2 | 0 |
| Metabolic & Nutritional System | | |
| Peripheral Edema | 5 | 4 |
| Decreased Weight | 2 | 0 |
| Nervous System | | |
| Dizziness | 25 | 24 |
| Somnolence | 22 | 9 |
| Insomnia | 17 | 12 |
| Hallucinations | 9 | 3 |
| Confusion | 4 | 1 |
| Amnesia | 4 | 2 |
| Hypesthesia | 3 | 1 |
| Dystonia | 2 | 1 |
| Akathisia | 2 | 0 |

| | | |
|--------------------------|---|---|
| Thinking Abnormalities | 2 | 0 |
| Decreased Libido | 1 | 0 |
| Myoclonus | 1 | 0 |
| Special Senses | | |
| Vision Abnormalities | 3 | 0 |
| Urogenital System | | |
| Impotence | 2 | 1 |

* Patients may have reported multiple adverse experiences during the study or at discontinuation; thus, patients may be included in more than one category.

Other events reported by 1% or more of patients with early Parkinson's disease and treated with pramipexole but reported equally or more frequently in the placebo group were infection, accidental injury, headache, pain, tremor, back pain, syncope, postural hypotension, hypertonia, depression, abdominal pain, anxiety, dyspepsia, flatulence, diarrhea, rash, ataxia, dry mouth, extrapyramidal syndrome, leg cramps, twitching, pharyngitis, sinusitis, sweating, rhinitis, urinary tract infection, vasodilation, flu syndrome, increased saliva, tooth disease, dyspnea, increased cough, gait abnormalities, urinary frequency, vomiting, allergic reaction, hypertension, pruritus, hypokinesia, increased creatine PK, nervousness, dream abnormalities, chest pain, neck pain, paresthesia, tachycardia, vertigo, voice alteration, conjunctivitis, paralysis, accommodation abnormalities, tinnitus, diplopia and taste perversions.

In a fixed dose study in early Parkinson's disease, occurrence of the following events increased in frequency as the dose increased over the range from 1.5 mg/day to 6 mg/day: postural hypotension, nausea, constipation, somnolence and amnesia. The frequency of these events was generally 2-fold greater than placebo for pramipexole doses greater than 3 mg/day. The incidence of somnolence with pramipexole at a dose of 1.5 mg/day was comparable to that reported for placebo.

Advanced Parkinson's Disease

In the four double-blind, placebo-controlled trials of patients with advanced Parkinson's disease, the most commonly observed adverse events (> 5%) that were numerically more frequent in the group treated with pramipexole and concomitant levodopa were postural (orthostatic) hypotension, dyskinesia, extrapyramidal syndrome, insomnia, dizziness, hallucinations, accidental injury, dream abnormalities, confusion, constipation, asthenia, somnolence, dystonia, gait abnormality, hypertonia, dry mouth, amnesia and urinary frequency.

Approximately 12% of 260 patients with advanced Parkinson's disease who received pramipexole and concomitant levodopa in the double-blind, placebo-controlled trials discontinued treatment due to adverse events compared with 16% of 264 patients who received placebo and concomitant levodopa. The events most commonly causing discontinuation of treatment were related to the nervous system (hallucinations [2.7% on pramipexole vs. 0.4% on placebo]; dyskinesia [1.9% on pramipexole vs. 0.8% on placebo]; extrapyramidal syndrome [1.5% on pramipexole vs. 4.9% on placebo]; dizziness [1.2% on pramipexole vs. 1.5% on placebo]; confusion [1.2% on pramipexole vs. 2.3% on placebo]); and cardiovascular system (postural [orthostatic] hypotension [2.3% on pramipexole vs. 1.1% on placebo]).

Adverse Event Incidence in Controlled Clinical Studies in Advanced Parkinson's Disease

Table 4 lists treatment-emergent adverse events that occurred in the double-blind, placebo-controlled studies in advanced Parkinson's disease that were reported by $\geq 1\%$ of patients treated with pramipexole and were numerically more frequent than in the placebo group. In these studies, pramipexole or placebo was administered to patients who were also receiving concomitant levodopa. Adverse events were usually mild or moderate in intensity.

The prescriber should be aware that these figures cannot be used to predict the incidence of adverse

events in the course of usual medical practice where patient characteristics and other factors differ from those that prevailed in the clinical studies. Similarly, the cited frequencies cannot be compared with figures obtained from other clinical investigations involving different treatments, uses and investigators. However, the cited figures do provide the prescribing physician with some basis for estimating the relative contribution of drug and nondrug factors to the adverse events incidence rate in the population studied.

Table 4 Treatment-Emergent Adverse Event* Incidence in Double-Blind, Placebo-Controlled Trials in Advanced Parkinson's Disease (Events \geq 1% of Patients Treated with Pramipexole and Numerically More Frequent than in the Placebo Group)

| Body System/ Adverse Event | Pramipexole[†] (N=260) % | Placebo[†] (N=264) % |
|---|--|--|
| Body as a Whole | | |
| Accidental Injury | 17 | 15 |
| Asthenia | 10 | 8 |
| General Edema | 4 | 3 |
| Chest Pain | 3 | 2 |
| Malaise | 3 | 2 |
| Cardiovascular System | | |
| Postural Hypotension | 53 | 48 |
| Digestive System | | |
| Constipation | 10 | 9 |
| Dry Mouth | 7 | 3 |
| Metabolic & Nutritional System | | |
| Peripheral Edema | 2 | 1 |
| Increased Creatine PK | 1 | 0 |
| Musculoskeletal System | | |
| Arthritis | 3 | 1 |
| Twitching | 2 | 0 |
| Bursitis | 2 | 0 |
| Myasthenia | 1 | 0 |
| Nervous System | | |
| Dyskinesia | 47 | 31 |
| Extrapyramidal Syndrome | 28 | 26 |
| Insomnia | 27 | 22 |
| Dizziness | 26 | 25 |
| Hallucinations | 17 | 4 |
| Dream Abnormalities | 11 | 10 |
| Confusion | 10 | 7 |
| Somnolence | 9 | 6 |
| Dystonia | 8 | 7 |
| Gait Abnormalities | 7 | 5 |
| Hypertonia | 7 | 6 |
| Amnesia | 6 | 4 |
| Akathisia | 3 | 2 |
| Thinking Abnormalities | 3 | 2 |
| Paranoid Reaction | 2 | 0 |

| | | |
|------------------------------|---|---|
| Delusions | 1 | 0 |
| Sleep Disorders | 1 | 0 |
| Respiratory System | | |
| Dyspnea | 4 | 3 |
| Rhinitis | 3 | 1 |
| Pneumonia | 2 | 0 |
| Skin & Appendages | | |
| Skin Disorders | 2 | 1 |
| Special Senses | | |
| Accommodation Abnormalities | 4 | 2 |
| Vision Abnormalities | 3 | 1 |
| Diplopia | 1 | 0 |
| Urogenital System | | |
| Urinary Frequency | 6 | 3 |
| Urinary Tract Infection | 4 | 3 |
| Urinary Incontinence | 2 | 1 |

* Patients may have reported multiple adverse experiences during the study or at discontinuation; thus, patients may be included in more than one category.

† Patients received concomitant levodopa.

Other events reported by 1% or more of patients with advanced Parkinson's disease and treated with pramipexole but reported equally or more frequently in the placebo group were nausea, pain, infection, headache, depression, tremor, hypokinesia, anorexia, back pain, dyspepsia, flatulence, ataxia, flu syndrome, sinusitis, diarrhea, myalgia, abdominal pain, anxiety, rash, paresthesia, hypertension, increased saliva, tooth disorder, apathy, hypotension, sweating, vasodilation, vomiting, increased cough, nervousness, pruritus, hypesthesia, neck pain, syncope, arthralgia, dysphagia, palpitations, pharyngitis, vertigo, leg cramps, conjunctivitis and lacrimation disorders.

General

Adverse Events; Relationship to Age, Gender and Race

Among the treatment-emergent adverse events in patients treated with pramipexole, hallucination appeared to exhibit a positive relationship to age in patients with Parkinson's disease. No gender-related differences were observed in Parkinson's disease patients. Less than 4% of patients enrolled were non-Caucasian; therefore, an evaluation of adverse events related to race is not possible.

Laboratory Tests

During the development of pramipexole, no systematic abnormalities on routine laboratory testing were noted. Therefore, no specific guidance is offered regarding routine monitoring; the practitioner retains responsibility for determining how best to monitor the patient in his or her care.

Other Adverse Events Observed During Phase 2 and 3 Clinical Trials

Pramipexole has been administered to 1,620 Parkinson's disease patients in Phase 2 and 3 clinical trials. During these trials, all adverse events were recorded by the clinical investigators using terminology of their own choosing; similar types of events were grouped into a smaller number of standardized categories using MedDRA dictionary terminology. These categories are used in the listing below. Adverse events which are not listed above but occurred on at least two occasions (one occasion if the event was serious) in the 2,509 individuals exposed to pramipexole are listed below. The reported events below are included without regard to determination of a causal relationship to pramipexole.

Blood and lymphatic system disorders: anemia, iron deficiency anemia, leukocytosis, leukopenia,

lymphadenitis, lymphadenopathy, thrombocythaemia, thrombocytopenia

Cardiac disorders: angina pectoris, arrhythmia supraventricular, atrial fibrillation, atrioventricular block first degree, atrioventricular block second degree, bradycardia, bundle branch block, cardiac arrest, cardiac failure, cardiac failure congestive, cardiomegaly, coronary artery occlusion, cyanosis, extrasystoles, left ventricular failure, myocardial infarction, nodal arrhythmia, sinus arrhythmia, sinus bradycardia, sinus tachycardia, supraventricular extrasystoles, supraventricular tachycardia, tachycardia, ventricular fibrillation, ventricular extrasystoles, ventricular hypertrophy

Congenital, familial and genetic disorders: atrial septal defect, congenital foot malformation, spine malformation

Ear and labyrinth disorders: deafness, ear pain, hearing impaired, hypoacusis, motion sickness, vestibular ataxia

Endocrine disorders: goiter, hyperthyroidism, hypothyroidism

Eye disorders: amaurosis fugax, blepharitis, blepharospasm, cataract, dacryostenosis acquired, dry eye, eye hemorrhage, eye irritation, eye pain, eyelid edema, eyelid ptosis, glaucoma, keratitis, macular degeneration, myopia, photophobia, retinal detachment, retinal vascular disorder, scotoma, vision blurred, visual acuity reduced, vitreous floaters

Gastrointestinal disorders: abdominal discomfort, abdominal distension, aphthous stomatitis, ascites, cheilitis, colitis, colitis ulcerative, duodenal ulcer, duodenal ulcer hemorrhage, enteritis, eructation, fecal incontinence, gastric ulcer, gastric ulcer hemorrhage, gastritis, gastrointestinal hemorrhage, gastroesophageal reflux disease, gingivitis, haematemesis, haematochezia, hemorrhoids, hiatus hernia, hyperchlorhydria, ileus, inguinal hernia, intestinal obstruction, irritable bowel syndrome, esophageal spasm, esophageal stenosis, esophagitis, pancreatitis, periodontitis, rectal hemorrhage, reflux esophagitis, tongue edema, tongue ulceration, toothache, umbilical hernia

General disorders: chest discomfort, chills, death, drug withdrawal syndrome, face edema, feeling cold, feeling hot, feeling jittery, gait disturbance, impaired healing, influenza-like illness, irritability, localized edema, edema, pitting edema, thirst

Hepatobiliary disorders: biliary colic, cholecystitis, cholecystitis chronic, cholelithiasis

Immune system disorders: drug hypersensitivity

Infections and infestations: abscess, acute tonsillitis, appendicitis, bronchiolitis, bronchitis, bronchopneumonia, cellulitis, cystitis, dental caries, diverticulitis, ear infection, eye infection, folliculitis, fungal infection, furuncle, gangrene, gastroenteritis, gingival infection, herpes simplex, herpes zoster, hordeolum, intervertebral discitis, laryngitis, lobar pneumonia, nail infection, onychomycosis, oral candidiasis, orchitis, osteomyelitis, otitis externa, otitis media, paronychia, pyelonephritis, pyoderma, sepsis, skin infection, tonsillitis, tooth abscess, tooth infection, upper respiratory tract infection, urethritis, vaginal candidiasis, vaginal infection, viral infection, wound infection

Injury, poisoning and procedural complications: accidental falls, drug toxicity epicondylitis, road traffic accident, sunburn, tendon rupture

Metabolism and nutrition disorders: cachexia, decreased appetite, dehydration, diabetes mellitus, fluid retention, gout, hypercholesterolemia, hyperglycemia, hyperlipidemia, hyperuricemia, hypocalcemia, hypoglycemia, hypokalemia, hyponatremia, hypovitaminosis, increased appetite, metabolic alkalosis

Musculoskeletal and connective tissue disorders: bone pain, fasciitis, flank pain, intervertebral disc disorder, intervertebral disc protrusion, joint effusion, joint stiffness, joint swelling, monarthrititis, muscle rigidity, muscle spasms, musculoskeletal stiffness, myopathy, myositis, nuchal rigidity, osteoarthritis, osteonecrosis, osteoporosis, polymyalgia, rheumatoid arthritis, shoulder pain, spinal osteoarthritis, tendonitis, tenosynovitis

Neoplasms benign, malignant and unspecified: abdominal neoplasm, adenocarcinoma, adenoma benign,

basal cell carcinoma, bladder cancer, breast cancer, breast neoplasm, chronic lymphocytic leukemia, colon cancer, colorectal cancer, endometrial cancer, gallbladder cancer, gastric cancer, gastrointestinal neoplasm, hemangioma, hepatic neoplasm, hepatic neoplasm malignant, lip and/or oral cavity cancer, lung neoplasm malignant, lung cancer metastatic, lymphoma, malignant melanoma, melanocytic naevus, metastases to lung, multiple myeloma, oral neoplasm benign, neoplasm, neoplasm malignant, neoplasm prostate, neoplasm skin, neuroma, ovarian cancer, prostate cancer, prostatic adenoma, pseudo lymphoma, renal neoplasm, skin cancer, skin papilloma, squamous cell carcinoma, thyroid neoplasm, uterine leiomyoma

Nervous system disorders: ageusia, akinesia, anticholinergic syndrome, aphasia, balance disorder, brain edema, carotid artery occlusion, carpal tunnel syndrome, cerebral artery embolism, cerebral hemorrhage, cerebral infarction, cerebral ischemia, chorea, cognitive disorder, coma, convulsion, coordination abnormal, dementia, depressed level of consciousness, disturbance in attention, dizziness postural, dysarthria, dysgraphia, facial palsy, grand mal convulsion, hemiplegia, hyperaesthesia, hyperkinesia, hyperreflexia, hyporeflexia, hypotonia, lethargy, loss of consciousness, memory impairment, migraine, muscle contractions involuntary, narcolepsy, neuralgia, neuropathy, nystagmus, parosmia, psychomotor hyperactivity, sciatica, sedation, sensory disturbance, sleep phase rhythm disturbance, sleep talking, stupor, syncope vasovagal, tension headache

Psychiatric disorders: affect lability, aggression, agitation, bradyphrenia, bruxism, suicide, delirium, delusional disorder persecutory type, disorientation, dissociation, emotional distress, euphoric mood, hallucination auditory, hallucination visual, initial insomnia, libido increased, mania, middle insomnia, mood altered, nightmare, obsessive thoughts, obsessive-compulsive disorder, panic reaction, parasomnia, personality disorder, psychotic disorder, restlessness, sleep walking, suicidal ideation

Renal and urinary disorders: chromaturia, dysuria, glycosuria, hematuria, urgency, nephrolithiasis, neurogenic bladder, nocturia, oliguria, pollakiuria, proteinuria, renal artery stenosis, renal colic, renal cyst, renal failure, renal impairment, urinary retention

Reproductive system and breast disorders: amenorrhea, breast pain, dysmenorrhea, epididymitis, gynaecomastia, menopausal symptoms, menorrhagia, metrorrhagia, ovarian cyst, priapism, prostatitis, sexual dysfunction, uterine hemorrhage, vaginal discharge, vaginal hemorrhage

Respiratory, thoracic and mediastinal disorders: apnea, aspiration, asthma, choking, chronic obstructive pulmonary disease, dry throat, dysphonia, dyspnea exertional, epistaxis, haemoptysis, hiccups, hyperventilation, increased bronchial secretion, laryngospasm, nasal dryness, nasal polyps, obstructive airways disorder, pharyngolaryngeal pain, pleurisy, pneumonia aspiration, pneumothorax, postnasal drip, productive cough, pulmonary embolism, pulmonary edema, respiratory alkalosis, respiratory distress, respiratory failure, respiratory tract congestion, rhinitis allergic, rhinorrhea, sinus congestion, sleep apnoea syndrome, sneezing, snoring, tachypnea, wheezing

Skin and subcutaneous tissue disorders: acne, alopecia, cold sweat, dermal cyst, dermatitis, dermatitis bullous, dermatitis contact, dry skin, ecchymosis, eczema, erythema, hyperkeratosis, livedo reticularis, night sweats, periorbital edema, petechiae, photosensitivity allergic reaction, psoriasis, purpura, rash erythematous, rash maculo-papular, rash papular, rosacea, seborrhea, seborrheic dermatitis, skin burning sensation, skin discoloration, skin exfoliation, skin hyperpigmentation, skin hypertrophy, skin irritation, skin nodule, skin odor abnormal, skin ulcer, urticaria

Vascular disorders: aneurysm, angiopathy, arteriosclerosis, circulatory collapse, deep vein thrombosis, embolism, hematoma, hot flush, hypertensive crisis, lymphoedema, pallor, phlebitis, Raynaud's phenomenon, shock, thrombophlebitis, thrombosis, varicose vein

6.2 Post-Marketing Experience

In addition to the adverse events reported during clinical trials, the following adverse reactions have been identified during post-approval use of pramipexole, primarily in Parkinson's disease patients. Because these reactions are reported voluntarily from a population of uncertain size, it is not always

possible to reliably estimate their frequency or establish a causal relationship to drug exposure. Decisions to include these events in labeling are typically based on one or more of the following factors: (1) seriousness of the reaction, (2) frequency of reporting or (3) strength of causal connection to pramipexole tablets. Similar types of reactions were grouped into a smaller number of standardized categories using the MedDRA terminology: abnormal behavior, abnormal dreams, accidents (including fall), blackouts, compulsive shopping, fatigue, hallucinations (all kinds), headache, hypotension (including postural hypotension), inappropriate antidiuretic hormone secretion (SIADH), increased eating (including binge eating, compulsive eating, and hyperphagia), libido disorders (including increased and decreased libido and hypersexuality), pathological gambling, pruritus, syncope, vomiting and weight increase.

7 DRUG INTERACTIONS

See also *Dosage and Administration* (2.2) and *Clinical Pharmacology* (12.3).

7.1 Dopamine Antagonists

Since pramipexole is a dopamine agonist, it is possible that dopamine antagonists, such as the neuroleptics (phenothiazines, butyrophenones, thioxanthenes) or metoclopramide, may diminish the effectiveness of pramipexole.

7.2 Drug/Laboratory Test Interactions

There are no known interactions between pramipexole and laboratory tests.

8 USE IN SPECIFIC POPULATIONS

8.1 Pregnancy

Teratogenic Effects. Pregnancy Category C

There are no adequate and well controlled studies in pregnant women. Pramipexole should be used during pregnancy only if the potential benefit justifies the potential risk to the fetus.

When pramipexole was given to female rats throughout pregnancy, implantation was inhibited at a dose of 2.5 mg/kg/day (5 times the maximum recommended human dose (MRHD) for Parkinson's disease of 4.5 mg/day on a body surface area (mg/m²) basis). Administration of 1.5 mg/kg/day of pramipexole to pregnant rats during the period of organogenesis (gestation days 7 through 16) resulted in a high incidence of total resorption of embryos. The plasma AUC in rats at this dose was 4 times the AUC in humans at the MRHD. These findings are thought to be due to the prolactin-lowering effect of pramipexole, since prolactin is necessary for implantation and maintenance of early pregnancy in rats (but not rabbits or humans). Because of pregnancy disruption and early embryonic loss in these studies, the teratogenic potential of pramipexole could not be adequately evaluated. There was no evidence of adverse effects on embryo-fetal development following administration of up to 10 mg/kg/day to pregnant rabbits during organogenesis (plasma AUC was 70 times that in humans at the MRHD). Postnatal growth was inhibited in the offspring of rats treated with 0.5 mg/kg/day (approximately equivalent to the MRHD on a mg/m² basis) or greater during the latter part of pregnancy and throughout lactation.

8.3 Nursing Mothers

Studies have shown that pramipexole treatment resulted in an inhibition of prolactin secretion in humans and rats.

A single-dose, radio-labeled study showed that drug-related material was present in rat milk at concentrations 3 to 6 times higher than those in plasma at equivalent time points. It is not known whether

this drug is excreted in human milk. Because many drugs are excreted in human milk and because of the potential for serious adverse reactions in nursing infants from pramipexole, a decision should be made whether to discontinue nursing or to discontinue the drug, taking into account the importance of the drug to the mother.

8.4 Pediatric Use

Safety and effectiveness of pramipexole in pediatric patients has not been established.

8.5 Geriatric Use

Pramipexole total oral clearance is approximately 30% lower in subjects older than 65 years compared with younger subjects, because of a decline in pramipexole renal clearance due to an age related reduction in renal function. This resulted in an increase in elimination half-life from approximately 8.5 hours to 12 hours.

In clinical studies with Parkinson's disease patients, 38.7% of patients were older than 65 years. There were no apparent differences in efficacy or safety between older and younger patients, except that the relative risk of hallucination associated with the use of pramipexole was increased in the elderly.

8.6 Patients with Renal Impairment

The elimination of pramipexole is dependent on renal function. Pramipexole clearance is extremely low in dialysis patients, as a negligible amount of pramipexole is removed by dialysis. Caution should be exercised when administering pramipexole to patients with renal disease [*see Dosage and Administration (2.2), Warnings and Precautions (5.6) and Clinical Pharmacology (12.3)*].

9 DRUG ABUSE AND DEPENDENCE

9.1 Controlled Substance

Pramipexole is not a controlled substance.

9.2 Abuse and Dependence

Pramipexole has not been systematically studied in animals or humans for its potential for abuse, tolerance or physical dependence. However, in a rat model on cocaine self-administration, pramipexole had little or no effect.

10 OVERDOSAGE

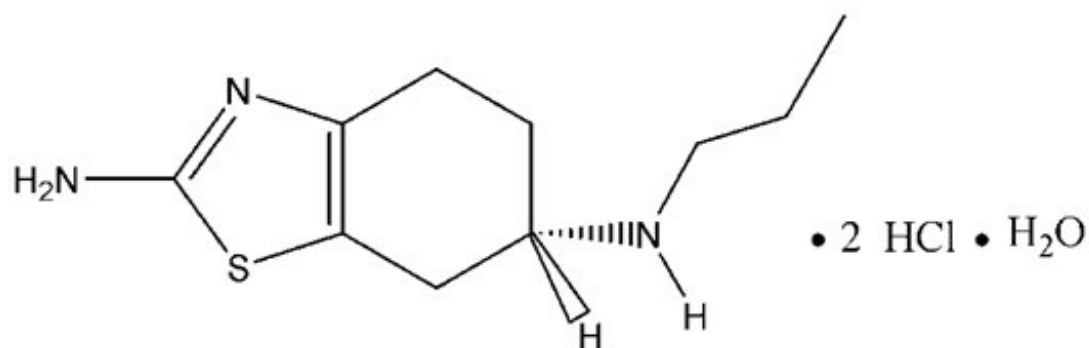
There is no clinical experience with significant overdosage. One patient took 11 mg/day of pramipexole for 2 days in a clinical trial for an investigational use. Blood pressure remained stable although pulse rate increased to between 100 and 120 beats/minute. No other adverse events were reported related to the increased dose.

There is no known antidote for overdosage of a dopamine agonist. If signs of central nervous system stimulation are present, a phenothiazine or other butyrophenone neuroleptic agent may be indicated; the efficacy of such drugs in reversing the effects of overdosage has not been assessed. Management of overdose may require general supportive measures along with gastric lavage, intravenous fluids and electrocardiogram monitoring.

11 DESCRIPTION

Pramipexole dihydrochloride tablets contain pramipexole, a nonergot dopamine agonist. The chemical name of pramipexole dihydrochloride is (S)-2-amino-4,5,6,7-tetrahydro-6-(propylamino)benzothiazole dihydrochloride monohydrate. Its molecular formula is $C_{10}H_{17}N_3S \cdot 2HCl \cdot H_2O$, and its molecular

weight is 302.27. The structural formula is:



Pramipexole dihydrochloride, USP is a white to off-white crystalline powder. Melting occurs in the range of 296°C to 301°C, with decomposition. Pramipexole dihydrochloride is more than 20% soluble in water, about 8% in methanol, about 0.5% in ethanol and practically insoluble in dichloromethane.

Pramipexole dihydrochloride tablets, for oral administration, contain 0.125 mg, 0.25 mg, 0.5 mg, 0.75 mg, 1 mg or 1.5 mg of pramipexole dihydrochloride, USP. Inactive ingredients consist of colloidal silicon dioxide, croscopvidone, hydroxypropyl cellulose, magnesium stearate, mannitol, pregelatinized starch and sodium citrate. In addition, the following product specific coloring agents are present:

0.25 mg contains FD&C Yellow No. 6 Aluminum Lake.

0.5 mg contains FD&C Yellow No. 6 Aluminum Lake and FD&C Blue No. 2 Aluminum Lake.

0.75 contains FD&C Yellow No. 6 Aluminum Lake and FD&C Blue No. 2 Aluminum Lake.

1 mg contains FD&C Yellow No. 6 Aluminum Lake and FD&C Blue No. 2 Aluminum Lake.

1.5 mg contains FD&C Yellow No. 6 Aluminum Lake FD&C Blue No. 2 Aluminum Lake and D&C Red No. 27 Aluminum Lake.

12 CLINICAL PHARMACOLOGY

12.1 Mechanism of Action

Pramipexole is a non-ergot dopamine agonist with high relative *in vitro* specificity and full intrinsic activity at the D₂ subfamily of dopamine receptors, binding with higher affinity to D₃ than to D₂ or D₄ receptor subtypes.

Parkinson's Disease

The precise mechanism of action of pramipexole as a treatment for Parkinson's disease is unknown, although it is believed to be related to its ability to stimulate dopamine receptors in the striatum. This conclusion is supported by electrophysiologic studies in animals that have demonstrated that pramipexole influences striatal neuronal firing rates via activation of dopamine receptors in the striatum and the substantia nigra, the site of neurons that send projections to the striatum. The relevance of D₃ receptor binding in Parkinson's disease is unknown.

12.2 Pharmacodynamics

The effect of pramipexole on the QT interval of the ECG was investigated in a clinical study in 60 healthy male and female volunteers. All subjects initiated treatment with 0.375 mg extended release pramipexole tablets administered once daily, and were up-titrated every 3 days to 2.25 mg and 4.5 mg daily. No dose or exposure related effect on mean QT intervals was observed; however the study did

not have a valid assessment of assay sensitivity. The effect of pramipexole on QTc intervals at higher exposures achieved either due to drug interactions (e.g., with cimetidine), renal impairment or at higher doses has not been systematically evaluated.

Although mean values remained within normal reference ranges throughout the study, supine systolic blood pressure (SBP), diastolic blood pressure (DBP) and pulse rate for subjects treated with pramipexole generally increased during the rapid up-titration phase, by 10 mmHg, 7 mmHg and 10 bpm higher than placebo, respectively. Higher SBP, DBP and pulse rates compared to placebo were maintained until the pramipexole doses were tapered; values on the last day of tapering were generally similar to baseline values. Such effects have not been observed in clinical studies with Parkinson's disease patients, who were titrated according to labeled recommendations.

12.3 Pharmacokinetics

Pramipexole displays linear pharmacokinetics over the clinical dosage range. Its terminal half-life is about 8 hours in young healthy volunteers and about 12 hours in elderly volunteers. Steady-state concentrations are achieved within 2 days of dosing.

Absorption

Pramipexole is rapidly absorbed, reaching peak concentrations in approximately 2 hours. The absolute bioavailability of pramipexole is greater than 90%, indicating that it is well absorbed and undergoes little presystemic metabolism. Food does not affect the extent of pramipexole absorption, although the time of maximum plasma concentration (T_{max}) is increased by about one hour when the drug is taken with a meal.

Distribution

Pramipexole is extensively distributed, having a volume of distribution of about 500 L (coefficient of variation [CV] = 20%). It is about 15% bound to plasma proteins. Pramipexole distributes into red blood cells as indicated by an erythrocyte-to-plasma ratio of approximately 2.

Metabolism

Pramipexole is metabolized only to a negligible extent (< 10%). No specific active metabolite has been identified in human plasma or urine.

Elimination

Urinary excretion is the major route of pramipexole elimination, with 90% of a pramipexole dose recovered in urine, almost all as unchanged drug. The renal clearance of pramipexole is approximately 400 mL/min (CV = 25%), approximately 3 times higher than the glomerular filtration rate. Thus, pramipexole is secreted by the renal tubules, probably by the organic cation transport system.

Pharmacokinetics in Specific Populations

Because therapy with pramipexole is initiated at a low dose and gradually titrated upward according to clinical tolerability to obtain the optimum therapeutic effect, adjustment of the initial dose based on gender, weight, race or age is not necessary. However, renal insufficiency, which can cause a large decrease in the ability to eliminate pramipexole, may necessitate dosage adjustment [*see Dosage and Administration (2.2)*].

Gender

Pramipexole clearance is about 30% lower in women than in men, but this difference can be accounted for by differences in body weight. There is no difference in half-life between males and females.

Age

Pramipexole clearance decreases with age as the half-life and clearance are about 40% longer and 30% lower, respectively, in elderly (aged 65 years or older) compared with young healthy volunteers (aged less than 40 years). This difference is most likely due to the reduction in renal function with age, since pramipexole clearance is correlated with renal function, as measured by creatinine clearance.

Race

No racial differences in metabolism and elimination have been identified.

Parkinson's Disease Patients

A cross-study comparison of data suggests that the clearance of pramipexole may be reduced by about 30% in Parkinson's disease patients compared with healthy elderly volunteers. The reason for this difference appears to be reduced renal function in Parkinson's disease patients, which may be related to their poorer general health. The pharmacokinetics of pramipexole were comparable between early and advanced Parkinson's disease patients.

Hepatic Impairment

The influence of hepatic insufficiency on pramipexole pharmacokinetics has not been evaluated. Because approximately 90% of the recovered dose is excreted in the urine as unchanged drug, hepatic impairment would not be expected to have a significant effect on pramipexole elimination.

Renal Impairment

Clearance of pramipexole was about 75% lower in patients with severe renal impairment (creatinine clearance approximately 20 mL/min) and about 60% lower in patients with moderate impairment (creatinine clearance approximately 40 mL/min) compared with healthy volunteers [see *Warnings and Precautions (5.6)* and *Dosage and Administration (2.2)*]. In patients with varying degrees of renal impairment, pramipexole clearance correlates well with creatinine clearance. Therefore, creatinine clearance can be used as a predictor of the extent of decrease in pramipexole clearance.

Drug Interactions

Carbidopa/Levodopa

Carbidopa/levodopa did not influence the pharmacokinetics of pramipexole in healthy volunteers (N = 10). Pramipexole did not alter the extent of absorption (AUC) or the elimination of carbidopa/levodopa, although it caused an increase in levodopa C_{max} by about 40% and a decrease in T_{max} from 2.5 to 0.5 hours.

Selegiline

In healthy volunteers (N = 11), selegiline did not influence the pharmacokinetics of pramipexole.

Amantadine

Population pharmacokinetic analyses suggest that amantadine may slightly decrease the oral clearance of pramipexole.

Cimetidine

Cimetidine, a known inhibitor of renal tubular secretion of organic bases via the cationic transport system, caused a 50% increase in pramipexole AUC and a 40% increase in half-life (N = 12).

Probenecid

Probenecid, a known inhibitor of renal tubular secretion of organic acids via the anionic transporter, did not noticeably influence pramipexole pharmacokinetics (N = 12).

Other Drugs Eliminated Via Renal Secretion

Population pharmacokinetic analysis suggests that coadministration of drugs that are secreted by the cationic transport system (e.g., cimetidine, ranitidine, diltiazem, triamterene, verapamil, quinidine and quinine) decreases the oral clearance of pramipexole by about 20%, while those secreted by the anionic transport system (e.g., cephalosporins, penicillins, indomethacin, hydrochlorothiazide and chlorpropamide) are likely to have little effect on the oral clearance of pramipexole. Other known organic cation transport substrates and/or inhibitors (e.g., cisplatin and procainamide) may also decrease the clearance of pramipexole.

CYP Interactions

Inhibitors of cytochrome P450 enzymes would not be expected to affect pramipexole elimination because pramipexole is not appreciably metabolized by these enzymes *in vivo* or *in vitro*. Pramipexole does not inhibit CYP enzymes CYP1A2, CYP2C9, CYP2C19, CYP2E1 and CYP3A4. Inhibition of CYP2D6 was observed with an apparent K_i of 30 μM , indicating that pramipexole will not inhibit CYP enzymes at plasma concentrations observed following the clinical dose of 4.5 mg/day (1.5 mg TID).

13 NONCLINICAL TOXICOLOGY

13.1 Carcinogenesis, Mutagenesis, Impairment of Fertility

Two-year carcinogenicity studies with pramipexole have been conducted in mice and rats. Pramipexole was administered in the diet to mice at doses up to 10 mg/kg/day (or approximately 10 times the maximum recommended human dose (MRHD) for Parkinson's disease of 4.5 mg/day on a mg/m² basis). Pramipexole was administered in the diet to rats at doses up to 8 mg/kg/day. These doses were associated with plasma AUCs up to approximately 12 times that in humans at the MRHD. No significant increases in tumors occurred in either species.

Pramipexole was not mutagenic or clastogenic in a battery of *in vitro* (bacterial reverse mutation, V79/HGPRT gene mutation, chromosomal aberration in CHO cells) and *in vivo* (mouse micronucleus) assays.

In rat fertility studies, pramipexole at a dose of 2.5 mg/kg/day (5 times the MRHD on a mg/m² basis), prolonged estrus cycles and inhibited implantation. These effects were associated with reductions in serum levels of prolactin, a hormone necessary for implantation and maintenance of early pregnancy in rats.

13.2 Animal Toxicology and/or Pharmacology

Retinal Pathology in Rats

Pathologic changes (degeneration and loss of photoreceptor cells) were observed in the retina of albino rats in the 2-year carcinogenicity study with pramipexole. These findings were first observed during week 76 and were dose dependent in animals receiving 2 or 8 mg/kg/day (plasma AUCs equal to 2.5 and 12.5 times that in humans at the MRHD). In a similar study of pigmented rats with 2 years exposure to pramipexole at 2 or 8 mg/kg/day, retinal degeneration was not observed. Animals given drug had thinning in the outer nuclear layer of the retina that was only slightly greater (by morphometric analysis) than that seen in control rats.

Investigative studies demonstrated that pramipexole reduced the rate of disk shedding from the photoreceptor rod cells of the retina in albino rats, which was associated with enhanced sensitivity to the damaging effects of light. In a comparative study, degeneration and loss of photoreceptor cells occurred in albino rats after 13 weeks of treatment with 25 mg/kg/day of pramipexole (54 times the MRHD on a mg/m² basis) and constant light (100 lux) but not in pigmented rats exposed to the same dose and higher light intensities (500 lux). Thus, the retina of albino rats is considered to be uniquely sensitive to the damaging effects of pramipexole and light. Similar changes in the retina did not occur in

a 2-year carcinogenicity study in albino mice treated with 0.3, 2, or 10 mg/kg/day (0.3, 2.2 and 11 times the MRHD on a mg/m² basis). Evaluation of the retinas of monkeys given 0.1, 0.5, or 2 mg/kg/day of pramipexole (0.4, 2.2, and 8.6 times the MRHD on a mg/m² basis) for 12 months and minipigs given 0.3, 1, or 5 mg/kg/day of pramipexole for 13 weeks also detected no changes.

The potential significance of this effect in humans has not been established, but cannot be disregarded because disruption of a mechanism that is universally present in vertebrates (i.e., disk shedding) may be involved.

Fibro-osseous Proliferative Lesions in Mice

An increased incidence of fibro-osseous proliferative lesions occurred in the femurs of female mice treated for 2 years with 0.3, 2, or 10 mg/kg/day (0.3, 2.2, and 11 times the MRHD on a mg/m² basis). Similar lesions were not observed in male mice or rats and monkeys of either sex that were treated chronically with pramipexole. The significance of this lesion to humans is not known.

14 CLINICAL STUDIES

14.1 Parkinson's Disease

The effectiveness of pramipexole in the treatment of Parkinson's disease was evaluated in a multinational drug development program consisting of seven randomized, controlled trials. Three were conducted in patients with early Parkinson's disease who were not receiving concomitant levodopa, and four were conducted in patients with advanced Parkinson's disease who were receiving concomitant levodopa. Among these seven studies, three studies provide the most persuasive evidence of pramipexole's effectiveness in the management of patients with Parkinson's disease who were and were not receiving concomitant levodopa. Two of these three trials enrolled patients with early Parkinson's disease (not receiving levodopa), and one enrolled patients with advanced Parkinson's disease who were receiving maximally tolerated doses of levodopa.

In all studies, the Unified Parkinson's Disease Rating Scale (UPDRS), or one or more of its subparts, served as the primary outcome assessment measure. The UPDRS is a four-part multi-item rating scale intended to evaluate mentation (part I), Activities of Daily Living (ADL) (part II), motor performance (part III) and complications of therapy (part IV).

Part II of the UPDRS contains 13 questions relating to ADL, which are scored from 0 (normal) to 4 (maximal severity) for a maximum (worst) score of 52. Part III of the UPDRS contains 27 questions (for 14 items) and is scored as described for part II. It is designed to assess the severity of the cardinal motor findings in patients with Parkinson's disease (e.g., tremor, rigidity, bradykinesia, postural instability, etc.), scored for different body regions, and has a maximum (worst) score of 108.

Studies in Patients with Early Parkinson's Disease

Patients (N = 599) in the two studies of early Parkinson's disease had a mean disease duration of 2 years, limited or no prior exposure to levodopa (generally none in the preceding 6 months), and were not experiencing the "on-off" phenomenon and dyskinesia characteristic of later stages of the disease.

One of the two early Parkinson's disease studies (N = 335) was a double-blind, placebo-controlled, parallel trial consisting of a 7-week dose-escalation period and a 6 month maintenance period. Patients could be on selegiline, anticholinergics, or both, but could not be on levodopa products or amantadine. Patients were randomized to pramipexole or placebo. Patients treated with pramipexole had a starting daily dose of 0.375 mg and were titrated to a maximally tolerated dose, but no higher than 4.5 mg/day in three divided doses. At the end of the 6-month maintenance period, the mean improvement from baseline on the UPDRS part II (ADL) total score was 1.9 in the group receiving pramipexole and -0.4 in the placebo group, a difference that was statistically significant. The mean improvement from baseline on the UPDRS part III total score was 5 in the group receiving pramipexole and -0.8 in the placebo group, a difference that was also statistically significant. A statistically significant difference between groups

in favor of pramipexole was seen beginning at week 2 of the UPDRS part II (maximum dose 0.75 mg/day) and at week 3 of the UPDRS part III (maximum dose 1.5 mg/day).

The second early Parkinson's disease study (N = 264) was a double-blind, placebo-controlled, parallel trial consisting of a 6-week dose-escalation period and a 4-week maintenance period. Patients could be on selegiline, anticholinergics, amantadine or any combination of these, but could not be on levodopa products. Patients were randomized to 1 of 4 fixed doses of pramipexole (1.5 mg, 3 mg, 4.5 mg or 6 mg per day) or placebo. At the end of the 4-week maintenance period, the mean improvement from baseline on the UPDRS part II total score was 1.8 in the patients treated with pramipexole, regardless of assigned dose group, and 0.3 in placebo-treated patients. The mean improvement from baseline on the UPDRS part III total score was 4.2 in patients treated with pramipexole and 0.6 in placebo-treated patients. No dose-response relationship was demonstrated. The between-treatment differences on both parts of the UPDRS were statistically significant in favor of pramipexole for all doses.

No differences in effectiveness based on age or gender were detected. There were too few non-Caucasian patients to evaluate the effect of race. Patients receiving selegiline or anticholinergics had responses similar to patients not receiving these drugs.

Studies in Patients with Advanced Parkinson's Disease

In the advanced Parkinson's disease study, the primary assessments were the UPDRS and daily diaries that quantified amounts of "on" and "off" time.

Patients in the advanced Parkinson's disease study (N = 360) had a mean disease duration of 9 years, had been exposed to levodopa for long periods of time (mean 8 years), used concomitant levodopa during the trial, and had "on-off" periods.

The advanced Parkinson's disease study was a double-blind, placebo-controlled, parallel trial consisting of a 7-week dose-escalation period and a 6-month maintenance period. Patients were all treated with concomitant levodopa products and could additionally be on concomitant selegiline, anticholinergics, amantadine or any combination. Patients treated with pramipexole had a starting dose of 0.375 mg/day and were titrated to a maximally tolerated dose, but no higher than 4.5 mg/day in three divided doses. At selected times during the 6-month maintenance period, patients were asked to record the amount of "off," "on," or "on with dyskinesia" time per day for several sequential days. At the end of the 6-month maintenance period, the mean improvement from baseline on the UPDRS part II total score was 2.7 in the group treated with pramipexole and 0.5 in the placebo group, a difference that was statistically significant. The mean improvement from baseline on the UPDRS part III total score was 5.6 in the group treated with pramipexole and 2.8 in the placebo group, a difference that was statistically significant. A statistically significant difference between groups in favor of pramipexole was seen at week 3 of the UPDRS part II (maximum dose 1.5 mg/day) and at week 2 of the UPDRS part III (maximum dose 0.75 mg/day). Dosage reduction of levodopa was allowed during this study if dyskinesia (or hallucinations) developed; levodopa dosage reduction occurred in 76% of patients treated with pramipexole vs. 54% of placebo patients. On average, the levodopa dose was reduced 27%.

The mean number of "off" hours per day during baseline was 6 hours for both treatment groups. Throughout the trial, patients treated with pramipexole had a mean of 4 "off" hours per day, while placebo-treated patients continued to experience 6 "off" hours per day.

No differences in effectiveness based on age or gender were detected. There were too few non-Caucasian patients to evaluate the effect of race.

16 HOW SUPPLIED/STORAGE AND HANDLING

Pramipexole Dihydrochloride Tablets are available as 0.125 mg, 0.25 mg, 0.5 mg, 0.75 mg, 1 mg or 1.5 mg tablets.

The 0.125 mg tablets are white to off-white, round, unscored tablets debossed with **M** on one side of

the tablet and **X4** on the other side. They are available as follows:

NDC 0378-1704-60

bottles of 63 tablets

NDC 0378-1704-77

bottle of 90 tablets

NDC 0378-1704-05

bottles of 500 tablets

The 0.25 mg tablets are light orange, round tablets debossed with **M** on one side of the tablet and **X** to the left of the score and **5** to the right of the score on the other side. They are available as follows:

NDC 0378-1705-77

bottles of 90 tablets

NDC 0378-1705-05

bottles of 500 tablets

The 0.5 mg tablets are light blue, round tablets debossed with **M** on one side of the tablet and **X** to the left of the score and **7** to the right of the score on the other side. They are available as follows:

NDC 0378-1707-77

bottles of 90 tablets

NDC 0378-1707-05

bottles of 500 tablets

The 0.75 mg tablets are light gray, round, unscored tablets debossed with **M** on one side of the tablet and **X13** on the other side. They are available as follows:

NDC 0378-1713-77

bottles of 90 tablets

NDC 0378-1713-05

bottles of 500 tablets

The 1 mg tablets are beige, round tablets debossed with **M** on one side of the tablet and **X** to the left of the score and **11** to the right of the score on the other side. They are available as follows:

NDC 0378-1711-77

bottles of 90 tablets

NDC 0378-1711-05

bottles of 500 tablets

The 1.5 mg tablets are light lavender, round tablets debossed with **M** on one side of the tablet and **X** to the left of the score and **12** to the right of the score on the other side. They are available as follows:

NDC 0378-1712-77

bottles of 90 tablets

NDC 0378-1712-05

bottles of 500 tablets

Store at 20° to 25 °C (68° to 77°F). [See USP Controlled Room Temperature.]

Protect from light.

Dispense in a tight, light-resistant container as defined in the USP using a child-resistant closure.

PHARMACIST: Dispense a Patient Information Leaflet with each prescription.

17 PATIENT COUNSELING INFORMATION

See FDA-Approved Patient Labeling

17.1 Dosing Instructions

Instruct patients to take pramipexole dihydrochloride tablets only as prescribed. If a dose is missed, advise patients not to double their next dose.

Pramipexole dihydrochloride tablets can be taken with or without food. If patients develop nausea, they should be advised that taking pramipexole dihydrochloride tablets with food may reduce the occurrence of nausea.

Pramipexole is the active ingredient that is in both pramipexole dihydrochloride tablets and extended-release pramipexole tablets. Ensure that patients do not take both extended-release pramipexole and pramipexole dihydrochloride tablets.

17.2 Sedating Effects

Patients should be alerted to the potential sedating effects associated with pramipexole dihydrochloride tablets, including somnolence and the possibility of falling asleep while engaged in activities of daily living. Since somnolence is a frequent adverse event with potentially serious consequences, patients should neither drive a car nor engage in other potentially dangerous activities until they have gained sufficient experience with pramipexole dihydrochloride tablets to gauge whether or not it affects their mental and/or motor performance adversely. Advise patients that if increased somnolence or new episodes of falling asleep during activities of daily living (e.g., conversations or eating) are experienced at any time during treatment, they should not drive or participate in potentially dangerous activities until they have contacted their physician. Because of possible additive effects, caution should be advised when patients are taking other sedating medications or alcohol in combination with pramipexole dihydrochloride tablets and when taking concomitant medications that increase plasma levels of pramipexole (e.g., cimetidine) [*see Warnings and Precautions (5.1)*].

17.3 Impulse Control Symptoms Including Compulsive Behaviors

Patients and their caregivers should be alerted to the possibility that they may experience intense urges to spend money uncontrollably, intense urges to gamble, increased sexual urges, binge eating and/or other intense urges and the inability to control these urges while taking pramipexole dihydrochloride tablets. [*see Warnings and Precautions (5.3)*].

17.4 Hallucinations

Patients should be informed that hallucinations can occur and that the elderly are at a higher risk than younger patients with Parkinson's disease [*see Warnings and Precautions (5.4)*].

17.5 Postural (Orthostatic) Hypotension

Advise patients that they may develop postural (orthostatic) hypotension, with or without symptoms such as dizziness, nausea, fainting or blackouts, and sometimes, sweating. Hypotension may occur more frequently during initial therapy. Accordingly, caution patients against rising rapidly after sitting or lying down, especially if they have been doing so for prolonged periods and especially at the initiation of treatment with pramipexole dihydrochloride tablets [*see Warnings and Precautions (5.2)*].

17.6 Pregnancy

Because the teratogenic potential of pramipexole has not been completely established in laboratory animals, and because experience in humans is limited, advise women to notify their physicians if they become pregnant or intend to become pregnant during therapy [*see Use in Specific Populations (8.1)*].

17.7 Nursing Mothers

Because of the possibility that pramipexole may be excreted in breast milk, advise women to notify their physicians if they intend to breast-feed or are breast-feeding an infant [see *Use in Specific Populations (8.3)*].

PATIENT INFORMATION LEAFLET
PRAMIPEXOLE DIHYDROCHLORIDE TABLETS
(pram" i pex' ole dye hye" droe klor' ide)

Read this Patient Information before you start taking pramipexole dihydrochloride tablets and each time you get a refill. There may be new information. This information does not take the place of talking with your doctor about your medical condition or your treatment.

What are pramipexole dihydrochloride tablets?

Pramipexole dihydrochloride tablets are a prescription medicine used to treat:

- signs and symptoms of Parkinson's disease (PD)

It is not known if pramipexole dihydrochloride tablets are safe and effective in children.

What should I tell my doctor before taking pramipexole dihydrochloride tablets?

- Before taking pramipexole dihydrochloride tablets, tell your doctor if you:
 - feel sleepy during the day from a sleep problem
 - have low blood pressure, or if you feel dizzy or faint, especially when getting up from sitting or lying down
 - have trouble controlling your muscles (dyskinesia)
 - have kidney problems
 - drink alcohol. Alcohol can increase the chance that pramipexole dihydrochloride tablets will make you feel sleepy or fall asleep when you should be awake.
 - have any other medical conditions
 - are pregnant or plan to become pregnant. It is not known if pramipexole dihydrochloride tablets will harm your unborn baby.
 - are breast-feeding or plan to breast-feed. It is not known if pramipexole dihydrochloride passes into your breast milk. You and your doctor should decide if you will take pramipexole dihydrochloride tablets or breast-feed. You should not do both.

Tell your doctor about all the medicines you take, including prescription and non-prescription medicines, vitamins, and herbal supplements.

The combination of pramipexole dihydrochloride tablets and other medicines may affect each other and may cause side effects. Pramipexole dihydrochloride tablets may affect the way other medicines work, and other medicines may affect how pramipexole dihydrochloride tablets work.

Especially tell your doctor if you take:

- medicines called neuroleptics (phenothiazines, butyrophenones, thioxanthenes) or metoclopramide. Pramipexole dihydrochloride tablets may not work as well if you take these medicines.
- pramipexole dihydrochloride extended-release tablets. Pramipexole is the active ingredient in both pramipexole dihydrochloride tablets and pramipexole dihydrochloride extended-release tablets. If you are taking pramipexole dihydrochloride extended-release tablets, you should not

take pramipexole dihydrochloride tablets.

- any other medicines that make you sleepy or may increase the effects of pramipexole dihydrochloride tablets, such as cimetidine (Tagamet*).

Ask your doctor for a list of these medicines if you are not sure.

Know the medicines you take. Keep a list of them and show it to your doctor and pharmacist when you get a new medicine.

How should I take pramipexole dihydrochloride tablets?

- Take pramipexole dihydrochloride tablets exactly as your doctor tells you to take it.
- Your doctor will tell you how many pramipexole dihydrochloride tablets to take and when to take it. Do not take more or less pramipexole dihydrochloride tablets than your doctor tells you to.
- Your doctor may change your dose if needed.
- Pramipexole dihydrochloride tablets can be taken with or without food. Taking pramipexole dihydrochloride tablets with food may lower your chances of getting nausea.
- If you take more pramipexole dihydrochloride tablets than your doctor recommends, call your doctor or go to the nearest hospital emergency room right away.
- If you miss a dose, **do not double your next dose**. Skip the dose you missed and take your next regular dose.
- If you have Parkinson's disease and your doctor tells you to stop taking pramipexole dihydrochloride tablets, you should stop pramipexole dihydrochloride tablets slowly as directed by your doctor. If you stop pramipexole dihydrochloride tablets too quickly you may have withdrawal symptoms such as:
 - fever
 - confusion
 - severe muscle stiffness

Do not stop taking pramipexole dihydrochloride tablets without talking to your doctor.

What should I avoid while taking pramipexole dihydrochloride tablets?

- Do not drink alcohol while taking pramipexole dihydrochloride tablets. It can increase your chance of having serious side effects. See "What are the possible side effects of pramipexole dihydrochloride tablets?"
- Do not drive a car, operate a machine or do other dangerous activities until you know how pramipexole dihydrochloride tablets affect you. Sleepiness caused by pramipexole dihydrochloride tablets can happen as late as one year after you start your treatment.

What are the possible side effects of pramipexole dihydrochloride tablets?

Pramipexole dihydrochloride tablets may cause serious side effects, including:

- **falling asleep during normal daily activities.** Pramipexole dihydrochloride tablets may cause you to fall asleep while you are doing daily activities such as driving, talking with other people or eating.
 - Some people taking the medicine in pramipexole dihydrochloride tablets have had car accidents because they fell asleep while driving.
 - Some patients did not feel sleepy before they fell asleep while driving. You could fall asleep without any warning.

Tell your doctor right away if you fall asleep while you are doing activities such as talking, eating, driving or if you feel sleepier than normal for you.

- **low blood pressure when you sit or stand up quickly.** You may have:
 - dizziness
 - nausea
 - fainting
 - sweatingSit and stand up slowly after you have been sitting or lying down.
- **unusual urges.** Some people who take certain medicines to treat Parkinson's disease, including pramipexole dihydrochloride tablets, have reported problems, such as gambling, compulsive eating, compulsive buying and increased sex drive. If you or your family members notice that you are developing unusual urges or behaviors, talk to your doctor.
- **seeing visions, hearing sounds or feeling sensations that are not real** (hallucinations). Your chance of having hallucinations is higher if you are elderly (age 65 or older). If you have hallucinations, talk with your doctor right away.
- **uncontrolled sudden movements** (dyskinesia). If you have new dyskinesia or your existing dyskinesia gets worse tell your doctor.
- **skin cancer** (melanoma). Some people with Parkinson's disease may have a higher chance of having melanoma than people who do not have Parkinson's disease. It is not known if the chance of having melanoma is higher because of the medicines to treat Parkinson's disease, like pramipexole dihydrochloride tablets, or from the Parkinson's disease. People who take pramipexole dihydrochloride tablets should have regular skin examinations to check for melanoma.

The most common side effects in people taking pramipexole dihydrochloride tablets for Parkinson's disease are:

- nausea
- dizziness
- insomnia
- constipation
- muscle weakness
- abnormal dreams
- confusion
- memory problems (amnesia)
- urinating more often than normal

These are not all the possible side effects of pramipexole dihydrochloride tablets. Tell your doctor if you have any side effect that bothers you.

Call your doctor for medical advice about side effects. You may report side effects to FDA at 1-800-FDA-1088.

How should I store pramipexole dihydrochloride tablets?

- Store pramipexole dihydrochloride tablets at 20° to 25°C (68° to 77°F).
- Protect from light.
- **Keep pramipexole dihydrochloride tablets and all medicines out of the reach of children.**

General Information about the safe and effective use of pramipexole dihydrochloride tablets.

Medicines are sometimes prescribed for purposes other than those listed in a Patient Information leaflet. Do not use pramipexole dihydrochloride tablets for a condition for which it was not prescribed. Do not give pramipexole dihydrochloride tablets to other people, even if they have the same symptoms that you have. It may harm them.

This Patient Information leaflet summarizes the most important information about pramipexole dihydrochloride tablets. If you would like more information, talk with your doctor. You can ask your pharmacist or doctor for information about pramipexole dihydrochloride tablets that is written for healthcare professionals.

For more information, call Mylan Pharmaceuticals Inc. at 1-877-446-3679 (1-877-4-INFO-RX).

What are the ingredients in pramipexole dihydrochloride tablets?

Active Ingredient: pramipexole dihydrochloride, USP

Inactive Ingredients: colloidal silicon dioxide, crospovidone, hydroxypropyl cellulose, magnesium stearate, mannitol, pregelatinized starch and sodium citrate. In addition, the following product specific coloring agents are present: 0.25 mg contains FD&C Yellow No. 6 Aluminum Lake; 0.5 mg contains FD&C Yellow No. 6 Aluminum Lake and FD&C Blue No. 2 Aluminum Lake; 0.75 contains FD&C Yellow No. 6 Aluminum Lake and FD&C Blue No. 2 Aluminum Lake; 1 mg contains FD&C Yellow No. 6 Aluminum Lake and FD&C Blue No. 2 Aluminum Lake; 1.5 mg contains FD&C Yellow No. 6 Aluminum Lake FD&C Blue No. 2 Aluminum Lake and D&C Red No. 27 Aluminum Lake.

This Patient Information has been approved by the U.S. Food and Drug Administration.

* Tagamet is a registered trademark of GlaxoSmithKline.

Mylan Pharmaceuticals Inc.
Morgantown, WV 26505 U.S.A.

REVISED: SEPTEMBER 2013
PRMX:R5ppbpt/PL:PRMX:R4

PRINCIPAL DISPLAY PANEL - 0.125 mg

NDC 0378-1704-60

**Pramipexole
Dihydrochloride
Tablets
0.125 mg**

**PHARMACIST: Dispense the accompanying
Patient Information Leaflet to each patient.**

Rx only 63 Tablets

Each tablet contains:
Pramipexole dihydrochloride
monohydrate 0.125 mg

Dispense in a tight, light-resistant
container as defined in the USP
using a child-resistant closure.

Keep container tightly closed.

Keep this and all medication out of the reach of children.

**Store at 20° to 25°C (68° to 77°F).
[See USP Controlled Room Temperature.]**

Protect from light.

Usual Dosage: See accompanying prescribing information.

Mylan Pharmaceuticals Inc.
Morgantown, WV 26505 U.S.A.

Mylan.com

RM1704CS3

Each tablet contains:
Pramipexole dihydrochloride monohydrate 0.125 mg

NDC 0378-1704-60

Pramipexole Dihydrochloride Tablets

0.125 mg

PHARMACIST: Dispense the accompanying Patient Information Leaflet to each patient.

Mylan®

Rx only 63 Tablets

Dispense in a tight, light-resistant container as defined in the USP using a child-resistant closure. Keep container tightly closed. **Keep this and all medication out of the reach of children.** Store at 20° to 25°C (68° to 77°F). [See USP Controlled Room Temperature.] **Protect from light.** Usual Dosage: See accompanying prescribing information. Mylan Pharmaceuticals Inc. Morgantown, WV 26505 U.S.A.

Mylan®
Mylan.com

RM1704CS3

PRINCIPAL DISPLAY PANEL - 0.25 mg

NDC 0378-1705-77

**Pramipexole
Dihydrochloride
Tablets
0.25 mg**

**PHARMACIST: Dispense the accompanying
Patient Information Leaflet to each patient.**

Rx only 90 Tablets

Each tablet contains:
Pramipexole dihydrochloride monohydrate 0.25 mg

Dispense in a tight, light-resistant container as defined in the USP using a child-resistant closure.

Keep container tightly closed.

**Keep this and all medication
out of the reach of children.**

Store at 20° to 25°C (68° to 77°F).

**[See USP Controlled Room
Temperature.]**

Protect from light.

Usual Dosage: See accompanying
prescribing information.

Mylan Pharmaceuticals Inc.
Morgantown, WV 26505 U.S.A.

Mylan.com

RM1705MM3

Each tablet contains:
Pramipexole dihydrochloride
monohydrate 0.25 mg

NDC 0378-1705-77

**Pramipexole
Dihydrochloride**
Tablets

0.25 mg

PHARMACIST: Dispense the accompanying
Patient Information Leaflet to each patient.

Mylan®

Rx only 90 Tablets

Dispense in a tight, light-resistant
container as defined in the USP
using a child-resistant closure.
Keep container tightly closed.
**Keep this and all medication
out of the reach of children.**
Store at 20° to 25°C (68° to 77°F).
[See USP Controlled Room
Temperature.]
Protect from light.
Usual Dosage: See accompanying
prescribing information.
Mylan Pharmaceuticals Inc.
Morgantown, WV 26505 U.S.A.

Mylan®
Mylan.com

RM1705MM3

PRINCIPAL DISPLAY PANEL - 0.5 mg

NDC 0378-1707-77

**Pramipexole
Dihydrochloride
Tablets
0.5 mg**

**PHARMACIST: Dispense the accompanying
Patient Information Leaflet to each patient.**

Rx only 90 Tablets

Each tablet contains:
Pramipexole dihydrochloride
monohydrate 0.5 mg

Dispense in a tight, light-resistant
container as defined in the USP
using a child-resistant closure.

Keep container tightly closed.

Keep this and all medication out of the reach of children.

**Store at 20° to 25°C (68° to 77°F).
[See USP Controlled Room Temperature.]**

Protect from light.

Usual Dosage: See accompanying prescribing information.

Mylan Pharmaceuticals Inc.
Morgantown, WV 26505 U.S.A.

Mylan.com

RM1707MM3

Each tablet contains:
Pramipexole dihydrochloride monohydrate 0.5 mg

NDC 0378-1707-77

Pramipexole Dihydrochloride
Tablets
0.5 mg

PHARMACIST: Dispense the accompanying Patient Information Leaflet to each patient.

Mylan®

Rx only 90 Tablets

Dispense in a tight, light-resistant container as defined in the USP using a child-resistant closure. Keep container tightly closed. **Keep this and all medication out of the reach of children.** Store at 20° to 25°C (68° to 77°F). [See USP Controlled Room Temperature.] **Protect from light.** **Usual Dosage:** See accompanying prescribing information. **Mylan Pharmaceuticals Inc.** Morgantown, WV 26505 U.S.A.

Mylan®
Mylan.com

RM1707MM3

PRINCIPAL DISPLAY PANEL - 0.75 mg

NDC 0378-1713-77

**Pramipexole
Dihydrochloride
Tablets
0.75 mg**

**PHARMACIST: Dispense the accompanying
Patient Information Leaflet to each patient.**

Rx only 90 Tablets

Each tablet contains:
Pramipexole dihydrochloride
monohydrate 0.75 mg

Dispense in a tight, light-resistant
container as defined in the USP
using a child-resistant closure.

Keep container tightly closed.

Keep this and all medication out of the reach of children.

Store at 20° to 25°C (68° to 77°F).

[See USP Controlled Room Temperature.]

Protect from light.

Usual Dosage: See accompanying prescribing information.

Mylan Pharmaceuticals Inc.
Morgantown, WV 26505 U.S.A.

Mylan.com

RM1713MM4

Each tablet contains:
Pramipexole dihydrochloride monohydrate 0.75 mg

NDC 0378-1713-77

Pramipexole Dihydrochloride
Tablets

0.75 mg

X13

PHARMACIST: Dispense the accompanying Patient Information Leaflet to each patient.

Mylan®

Rx only 90 Tablets

Dispense in a tight, light-resistant container as defined in the USP using a child-resistant closure. Keep container tightly closed. **Keep this and all medication out of the reach of children.** Store at 20° to 25°C (68° to 77°F). [See USP Controlled Room Temperature.] **Protect from light.** **Usual Dosage:** See accompanying prescribing information. **Mylan Pharmaceuticals Inc.** Morgantown, WV 26505 U.S.A.

Mylan®
Mylan.com

RM1713MM4

PRINCIPAL DISPLAY PANEL - 1 mg

NDC 0378-1711-77

**Pramipexole
Dihydrochloride
Tablets
1 mg**

PHARMACIST: Dispense the accompanying Patient Information Leaflet to each patient.

Rx only 90 Tablets

Each tablet contains:
Pramipexole dihydrochloride monohydrate 1 mg

Dispense in a tight, light-resistant container as defined in the USP

using a child-resistant closure.

Keep container tightly closed.

Keep this and all medication out of the reach of children.

Store at 20° to 25°C (68° to 77°F).

[See USP Controlled Room Temperature.]

Protect from light.

Usual Dosage: See accompanying prescribing information.

Mylan Pharmaceuticals Inc.
Morgantown, WV 26505 U.S.A.

Mylan.com

RM1711MM3

PRINCIPAL DISPLAY PANEL – 1.5 mg

NDC 0378-1712-77

**Pramipexole
Dihydrochloride
Tablets
1.5 mg**

**PHARMACIST: Dispense the accompanying
Patient Information Leaflet to each patient.**

Rx only 90 Tablets

Each tablet contains:
Pramipexole dihydrochloride
monohydrate 1.5 mg

Dispense in a tight, light-resistant

container as defined in the USP using a child-resistant closure.

Keep container tightly closed.

Keep this and all medication out of the reach of children.

Store at 20° to 25°C (68° to 77°F).

[See USP Controlled Room Temperature.]

Protect from light.

Usual Dosage: See accompanying prescribing information.

Mylan Pharmaceuticals Inc.
Morgantown, WV 26505 U.S.A.

Mylan.com

RM1712MM3

Each tablet contains:
Pramipexole dihydrochloride monohydrate 1.5 mg

NDC 0378-1712-77

Pramipexole Dihydrochloride
Tablets
1.5 mg

PHARMACIST: Dispense the accompanying Patient Information Leaflet to each patient.

Mylan®

Rx only 90 Tablets

Dispense in a tight, light-resistant container as defined in the USP using a child-resistant closure. Keep container tightly closed. **Keep this and all medication out of the reach of children.** Store at 20° to 25°C (68° to 77°F). [See USP Controlled Room Temperature.] **Protect from light.** Usual Dosage: See accompanying prescribing information. Mylan Pharmaceuticals Inc. Morgantown, WV 26505 U.S.A.

RM1712MM3

Mylan®
Mylan.com

PRAMIPEXOLE DIHYDROCHLORIDE

pramipexole dihydrochloride tablet

Product Information

| | | | |
|-------------------------|-------------------------------|--------------------|---------------|
| Product Type | HUMAN PRESCRIPTION DRUG LABEL | Item Code (Source) | NDC:0378-1704 |
| Route of Administration | ORAL | DEA Schedule | |

Active Ingredient/Active Moiety

| Ingredient Name | Basis of Strength | Strength |
|---|-----------------------------|----------|
| PRAMIPEXOLE DIHYDROCHLORIDE (PRAMIPEXOLE) | PRAMIPEXOLE DIHYDROCHLORIDE | 0.125 mg |

Inactive Ingredients

| Ingredient Name | Strength |
|----------------------------------|----------|
| SILICON DIOXIDE | |
| CROSPVIDONE | |
| HYDROXYPROPYL CELLULOSE (TYPE H) | |
| MAGNESIUM STEARATE | |
| MANNITOL | |
| STARCH, CORN | |
| SODIUM CITRATE | |

Product Characteristics

| | | | |
|----------|----------------------------|--------------|----------|
| Color | WHITE (white to off-white) | Score | no score |
| Shape | ROUND | Size | 6mm |
| Flavor | | Imprint Code | M;X4 |
| Contains | | | |

Packaging

| # | Item Code | Package Description | Marketing Start Date | Marketing End Date |
|---|------------------|--------------------------|----------------------|--------------------|
| 1 | NDC:0378-1704-60 | 63 in 1 BOTTLE, PLASTIC | | |
| 2 | NDC:0378-1704-77 | 90 in 1 BOTTLE, PLASTIC | | |
| 3 | NDC:0378-1704-05 | 500 in 1 BOTTLE, PLASTIC | | |

Marketing Information

| Marketing Category | Application Number or Monograph Citation | Marketing Start Date | Marketing End Date |
|--------------------|--|----------------------|--------------------|
| ANDA | ANDA077854 | 11/04/2010 | |

PRAMIPEXOLE DIHYDROCHLORIDE

pramipexole dihydrochloride tablet

Product Information

| | | | |
|-------------------------|-------------------------------|--------------------|---------------|
| Product Type | HUMAN PRESCRIPTION DRUG LABEL | Item Code (Source) | NDC:0378-1705 |
| Route of Administration | ORAL | DEA Schedule | |

Active Ingredient/Active Moiety

| Ingredient Name | Basis of Strength | Strength |
|---|-----------------------------|----------|
| PRAMIPEXOLE DIHYDROCHLORIDE (PRAMIPEXOLE) | PRAMIPEXOLE DIHYDROCHLORIDE | 0.25 mg |

Inactive Ingredients

| Ingredient Name | Strength |
|-----------------|----------|
| SILICON DIOXIDE | |

| |
|----------------------------------|
| CROSPROVIDONE |
| HYDROXYPROPYL CELLULOSE (TYPE H) |
| MAGNESIUM STEARATE |
| MANNITOL |
| STARCH, CORN |
| SODIUM CITRATE |
| FD&C YELLOW NO. 6 |

Product Characteristics

| | | | |
|-----------------|-----------------------|---------------------|----------|
| Color | ORANGE (light orange) | Score | 2 pieces |
| Shape | ROUND | Size | 6mm |
| Flavor | | Imprint Code | M;X;5 |
| Contains | | | |

Packaging

| # | Item Code | Package Description | Marketing Start Date | Marketing End Date |
|---|------------------|--------------------------|----------------------|--------------------|
| 1 | NDC:0378-1705-77 | 90 in 1 BOTTLE, PLASTIC | | |
| 2 | NDC:0378-1705-05 | 500 in 1 BOTTLE, PLASTIC | | |

Marketing Information

| Marketing Category | Application Number or Monograph Citation | Marketing Start Date | Marketing End Date |
|--------------------|--|----------------------|--------------------|
| ANDA | ANDA077854 | 11/04/2010 | |

PRAMIPEXOLE DIHYDROCHLORIDE

pramipexole dihydrochloride tablet

Product Information

| | | | |
|--------------------------------|-------------------------------|---------------------------|---------------|
| Product Type | HUMAN PRESCRIPTION DRUG LABEL | Item Code (Source) | NDC:0378-1707 |
| Route of Administration | ORAL | DEA Schedule | |

Active Ingredient/Active Moiety

| Ingredient Name | Basis of Strength | Strength |
|---|-----------------------------|----------|
| PRAMIPEXOLE DIHYDROCHLORIDE (PRAMIPEXOLE) | PRAMIPEXOLE DIHYDROCHLORIDE | 0.5 mg |

Inactive Ingredients

| Ingredient Name | Strength |
|----------------------------------|----------|
| SILICON DIOXIDE | |
| CROSPROVIDONE | |
| HYDROXYPROPYL CELLULOSE (TYPE H) | |
| MAGNESIUM STEARATE | |

| | |
|-------------------|--|
| MANNITOL | |
| STARCH, CORN | |
| SODIUM CITRATE | |
| FD&C YELLOW NO. 6 | |
| FD&C BLUE NO. 2 | |

Product Characteristics

| | | | |
|----------|-------------------|--------------|----------|
| Color | BLUE (light blue) | Score | 2 pieces |
| Shape | ROUND | Size | 6mm |
| Flavor | | Imprint Code | M;X;7 |
| Contains | | | |

Packaging

| # | Item Code | Package Description | Marketing Start Date | Marketing End Date |
|---|------------------|--------------------------|----------------------|--------------------|
| 1 | NDC:0378-1707-77 | 90 in 1 BOTTLE, PLASTIC | | |
| 2 | NDC:0378-1707-05 | 500 in 1 BOTTLE, PLASTIC | | |

Marketing Information

| Marketing Category | Application Number or Monograph Citation | Marketing Start Date | Marketing End Date |
|--------------------|--|----------------------|--------------------|
| ANDA | ANDA077854 | 11/04/2010 | |

PRAMIPEXOLE DIHYDROCHLORIDE

pramipexole dihydrochloride tablet

Product Information

| | | | |
|-------------------------|-------------------------------|--------------------|---------------|
| Product Type | HUMAN PRESCRIPTION DRUG LABEL | Item Code (Source) | NDC:0378-1713 |
| Route of Administration | ORAL | DEA Schedule | |

Active Ingredient/Active Moiety

| Ingredient Name | Basis of Strength | Strength |
|---|-----------------------------|----------|
| PRAMIPEXOLE DIHYDROCHLORIDE (PRAMIPEXOLE) | PRAMIPEXOLE DIHYDROCHLORIDE | 0.75 mg |

Inactive Ingredients

| Ingredient Name | Strength |
|----------------------------------|----------|
| SILICON DIOXIDE | |
| CROSPVIDONE | |
| HYDROXYPROPYL CELLULOSE (TYPE H) | |
| MAGNESIUM STEARATE | |
| MANNITOL | |
| STARCH, CORN | |

| SODIUM CITRATE | | | | |
|--------------------------------|--|--------------------------|----------------------|--------------------|
| FD&C YELLOW NO. 6 | | | | |
| FD&C BLUE NO. 2 | | | | |
| Product Characteristics | | | | |
| Color | GRAY (light gray) | Score | no score | |
| Shape | ROUND | Size | 7mm | |
| Flavor | | Imprint Code | M;X13 | |
| Contains | | | | |
| Packaging | | | | |
| # | Item Code | Package Description | Marketing Start Date | Marketing End Date |
| 1 | NDC:0378-1713-77 | 90 in 1 BOTTLE, PLASTIC | | |
| 2 | NDC:0378-1713-05 | 500 in 1 BOTTLE, PLASTIC | | |
| Marketing Information | | | | |
| Marketing Category | Application Number or Monograph Citation | Marketing Start Date | Marketing End Date | |
| ANDA | ANDA090764 | 11/04/2010 | | |

PRAMIPEXOLE DIHYDROCHLORIDE

pramipexole dihydrochloride tablet

| Product Information | | | |
|---|-------------------------------|--------------------|---------------|
| Product Type | HUMAN PRESCRIPTION DRUG LABEL | Item Code (Source) | NDC:0378-1711 |
| Route of Administration | ORAL | DEA Schedule | |
| Active Ingredient/Active Moiety | | | |
| Ingredient Name | Basis of Strength | Strength | |
| PRAMIPEXOLE DIHYDROCHLORIDE (PRAMIPEXOLE) | PRAMIPEXOLE DIHYDROCHLORIDE | 1 mg | |
| Inactive Ingredients | | | |
| Ingredient Name | Strength | | |
| SILICON DIOXIDE | | | |
| CROSPVIDONE | | | |
| HYDROXYPROPYL CELLULOSE (TYPE H) | | | |
| MAGNESIUM STEARATE | | | |
| MANNITOL | | | |
| STARCH, CORN | | | |
| SODIUM CITRATE | | | |
| FD&C YELLOW NO. 6 | | | |

FD&C BLUE NO. 2

Product Characteristics

| | | | |
|----------|---------------|--------------|----------|
| Color | WHITE (beige) | Score | 2 pieces |
| Shape | ROUND | Size | 8mm |
| Flavor | | Imprint Code | M;X;11 |
| Contains | | | |

Packaging

| # | Item Code | Package Description | Marketing Start Date | Marketing End Date |
|---|------------------|--------------------------|----------------------|--------------------|
| 1 | NDC:0378-1711-77 | 90 in 1 BOTTLE, PLASTIC | | |
| 2 | NDC:0378-1711-05 | 500 in 1 BOTTLE, PLASTIC | | |

Marketing Information

| Marketing Category | Application Number or Monograph Citation | Marketing Start Date | Marketing End Date |
|--------------------|--|----------------------|--------------------|
| ANDA | ANDA077854 | 11/04/2010 | |

PRAMIPEXOLE DIHYDROCHLORIDE

pramipexole dihydrochloride tablet

Product Information

| | | | |
|-------------------------|-------------------------------|--------------------|---------------|
| Product Type | HUMAN PRESCRIPTION DRUG LABEL | Item Code (Source) | NDC:0378-1712 |
| Route of Administration | ORAL | DEA Schedule | |

Active Ingredient/Active Moiety

| Ingredient Name | Basis of Strength | Strength |
|---|-----------------------------|----------|
| PRAMIPEXOLE DIHYDROCHLORIDE (PRAMIPEXOLE) | PRAMIPEXOLE DIHYDROCHLORIDE | 1.5 mg |

Inactive Ingredients

| Ingredient Name | Strength |
|----------------------------------|----------|
| SILICON DIOXIDE | |
| CROSPOLVIDONE | |
| HYDROXYPROPYL CELLULOSE (TYPE H) | |
| MAGNESIUM STEARATE | |
| MANNITOL | |
| STARCH, CORN | |
| SODIUM CITRATE | |
| FD&C YELLOW NO. 6 | |
| FD&C BLUE NO. 2 | |
| D&C RED NO. 27 | |

Product Characteristics

| | | | |
|-----------------|-------------------------|---------------------|----------|
| Color | PURPLE (light lavender) | Score | 2 pieces |
| Shape | ROUND | Size | 10mm |
| Flavor | | Imprint Code | M;X;12 |
| Contains | | | |

Packaging

| # | Item Code | Package Description | Marketing Start Date | Marketing End Date |
|---|------------------|--------------------------|----------------------|--------------------|
| 1 | NDC:0378-1712-77 | 90 in 1 BOTTLE, PLASTIC | | |
| 2 | NDC:0378-1712-05 | 500 in 1 BOTTLE, PLASTIC | | |

Marketing Information

| Marketing Category | Application Number or Monograph Citation | Marketing Start Date | Marketing End Date |
|--------------------|--|----------------------|--------------------|
| ANDA | ANDA077854 | 11/04/2010 | |

Labeler - Mylan Pharmaceuticals Inc. (059295980)

Revised: 9/2013

Mylan Pharmaceuticals Inc.