

COMBIVIR- lamivudine and zidovudine tablet, film coated
ViiV Healthcare Company

HIGHLIGHTS OF PRESCRIBING INFORMATION

These highlights do not include all the information needed to use COMBIVIR safely and effectively. See full prescribing information for COMBIVIR.

COMBIVIR (lamivudine and zidovudine) Tablets 150 mg/300 mg
Initial U.S. Approval: 1997

**WARNING: RISK OF HEMATOLOGIC TOXICITY, MYOPATHY, LACTIC ACIDOSIS,
EXACERBATIONS OF HEPATITIS B**

See full prescribing information for complete boxed warning

- Hematologic toxicity including neutropenia and anemia have been associated with the use of zidovudine, one of the components of COMBIVIR (5.1)
- Symptomatic myopathy associated with prolonged use of zidovudine. (5.2)
- Lactic acidosis and hepatomegaly with steatosis, including fatal cases, have been reported with the use of nucleoside analogues including zidovudine. Suspend treatment if clinical or laboratory findings suggestive of lactic acidosis or pronounced hepatotoxicity occur. (5.3)
- Severe, acute exacerbations of hepatitis B have been reported in patients who are co-infected with hepatitis B virus (HBV) and human immunodeficiency virus (HIV-1) and have discontinued lamivudine, a component of COMBIVIR. Monitor hepatic function closely in these patients and, if appropriate, initiate anti-hepatitis B treatment. (5.4)

----- **INDICATIONS AND USAGE** -----

COMBIVIR, a combination of 2 nucleoside analogue reverse transcriptase inhibitors, is indicated in combination with other antiretroviral agents for the treatment of HIV-1 infection. (1) (1)

----- **DOSAGE AND ADMINISTRATION** -----

- Adults and Adolescents weighing ≥ 30 kg: 1 tablet twice daily. (2.1)
- Pediatrics: Dosage should be based on body weight not to exceed adult doses. (2.2)
- COMBIVIR, a fixed-dose product, should not be prescribed for pediatric patients weighing less than 30 kg or patients requiring dosage adjustment, such as those with renal or hepatic impairment, or patients experiencing dose-limiting adverse reactions. (2.3)

----- **DOSAGE FORMS AND STRENGTHS** -----

Tablets: Scored 150 mg lamivudine and 300 mg zidovudine (3) (3)

----- **CONTRAINDICATIONS** -----

COMBIVIR Tablets are contraindicated in patients with previously demonstrated clinically significant hypersensitivity (e.g., anaphylaxis, Stevens-Johnson syndrome). (4) (4)

----- **WARNINGS AND PRECAUTIONS** -----

- See boxed warning for information about the following: hematologic toxicity, symptomatic myopathy, lactic acidosis and severe hepatomegaly, and severe acute exacerbations of hepatitis B. (5.1, 5.2, 5.3, 5.4)
- COMBIVIR should not be administered with other lamivudine- or zidovudine-containing products or emtricitabine-containing products. (5.5)
- Hepatic decompensation, some fatal, has occurred in HIV-1/HCV co-infected patients receiving combination antiretroviral therapy and interferon alfa with/without ribavirin. Discontinue COMBIVIR as medically appropriate and consider dose reduction or discontinuation of interferon alfa, ribavirin, or both. (5.6)
- Exacerbation of anemia has been reported in HIV-1/HCV co-infected patients receiving ribavirin and zidovudine. Co-administration of ribavirin and zidovudine is not advised. (5.6)
- Pancreatitis: Use with caution in pediatric patients with a history of pancreatitis or other significant risk factors for pancreatitis. Discontinue treatment as clinically appropriate. (5.7)
- Immune reconstitution syndrome (5.8) and redistribution/accumulation of body fat (5.9) have been reported in patients treated with combination antiretroviral therapy.

-----ADVERSE REACTIONS-----

- Most commonly reported adverse reactions (incidence greater than or equal to 15%) in adult and pediatric HIV-1 clinical trials of combination lamivudine and zidovudine were headache, nausea, malaise and fatigue, nasal signs and symptoms, diarrhea, and cough. (6.1)

To report SUSPECTED ADVERSE REACTIONS, contact ViiV Healthcare at 1-877-844-8872 or FDA at 1-800-FDA-1088 or www.fda.gov/medwatch.

-----DRUG INTERACTIONS-----

- Concomitant use with the following drugs should be avoided: stavudine (7.1), zalcitabine (7.1), doxorubicin (7.2).
- Bone marrow suppressive/cytotoxic agents: May increase the hematologic toxicity of zidovudine. (7.3)

-----USE IN SPECIFIC POPULATIONS-----

- Pregnancy: Physicians are encouraged to register patients in the Antiretroviral Pregnancy Registry by calling 1-800-258-4263. (8.1)
- Nursing Mothers: HIV-1 infected mothers in the United States should not breastfeed to avoid potential postnatal transmission of HIV-1. (8.3)

See 17 for PATIENT COUNSELING INFORMATION.

Revised: 1/2013

FULL PRESCRIBING INFORMATION: CONTENTS*

WARNING: HEMATOLOGIC TOXICITY, MYOPATHY, LACTIC ACIDOSIS, EXACERBATIONS OF HEPATITIS B

1 INDICATIONS AND USAGE

2 DOSAGE AND ADMINISTRATION

2.1 Adults and Adolescents Weighing ≥ 30 kg

2.2 Pediatric Patients

2.3 Patients Requiring Dosage Adjustment

3 DOSAGE FORMS AND STRENGTHS

4 CONTRAINDICATIONS

5 WARNINGS AND PRECAUTIONS

5.1 Hematologic Toxicity/Bone Marrow Suppression

5.2 Myopathy

5.3 Lactic Acidosis/Hepatomegaly With Steatosis

5.4 Patients With HIV-1 and Hepatitis B Virus Co-infection

5.5 Use With Other, Lamivudine-, Zidovudine-, and/or Emtricitabine-Containing Products

5.6 Use With Interferon- and Ribavirin-Based Regimens

5.7 Pancreatitis

5.8 Immune Reconstitution Syndrome

5.9 Fat Redistribution

6 ADVERSE REACTIONS

6.1 Clinical Trials Experience

6.2 Postmarketing Experience

7 DRUG INTERACTIONS

7.1 Antiretroviral Agents

7.2 Doxorubicin

7.3 Hematologic/Bone Marrow Suppressive/Cytotoxic Agents

7.4 Interferon- and Ribavirin-Based Regimens

7.5 Trimethoprim/Sulfamethoxazole (TMP/SMX)

8 USE IN SPECIFIC POPULATIONS

- 8.1 Pregnancy
- 8.3 Nursing Mothers
- 8.4 Pediatric Use
- 8.5 Geriatric Use
- 8.6 Renal Impairment
- 8.7 Hepatic Impairment

10 OVERDOSAGE

11 DESCRIPTION

12 CLINICAL PHARMACOLOGY

- 12.1 Mechanism of Action
- 12.3 Pharmacokinetics
- 12.4 Microbiology

13 NONCLINICAL TOXICOLOGY

- 13.1 Carcinogenesis, Mutagenesis, Impairment of Fertility
- 13.2 Reproductive and Developmental Toxicology Studies

14 CLINICAL STUDIES

- 14.1 Adults
- 14.2 Prevention of Maternal-Fetal HIV-1 Transmission

16 HOW SUPPLIED/STORAGE AND HANDLING

17 PATIENT COUNSELING INFORMATION

- 17.1 Advice for the Patient

* Sections or subsections omitted from the full prescribing information are not listed.

FULL PRESCRIBING INFORMATION

WARNING: HEMATOLOGIC TOXICITY, MYOPATHY, LACTIC ACIDOSIS, EXACERBATIONS OF HEPATITIS B

Hematologic Toxicity: Zidovudine, one of the 2 active ingredients in COMBIVIR® (lamivudine and zidovudine) Tablets, has been associated with hematologic toxicity including neutropenia and anemia, particularly in patients with advanced HIV-1 disease [see *Warnings and Precautions (5.1)*].

Myopathy: Prolonged use of zidovudine has been associated with symptomatic myopathy [see *Warnings and Precautions (5.2)*].

Lactic Acidosis and Severe Hepatomegaly: Lactic acidosis and hepatomegaly with steatosis, including fatal cases, have been reported with the use of nucleoside analogues alone or in combination, including lamivudine, zidovudine, and other antiretrovirals. Suspend treatment if clinical or laboratory findings suggestive of lactic acidosis or pronounced hepatotoxicity occur [see *Warnings and Precautions (5.3)*].

Exacerbations of Hepatitis B: Severe, acute exacerbations of hepatitis B have been reported in patients who are co-infected with hepatitis B virus (HBV) and HIV-1 and have discontinued lamivudine, which is one component of COMBIVIR. Hepatic function should be monitored closely with both clinical and laboratory follow-up for at least several months in patients who discontinue COMBIVIR and are co-infected with HIV-1 and HBV. If appropriate, initiation of anti-hepatitis B therapy may be warranted [see *Warnings and Precautions (5.4)*].

1 INDICATIONS AND USAGE

COMBIVIR, a combination of 2 nucleoside analogues, is indicated in combination with other antiretrovirals for the treatment of HIV-1 infection.

2 DOSAGE AND ADMINISTRATION

2.1 Adults and Adolescents Weighing ≥ 30 kg

The recommended oral dose of COMBIVIR in HIV-1-infected adults and adolescents weighing greater than or equal to 30 kg is 1 tablet (containing 150 mg of lamivudine and 300 mg of zidovudine) twice daily.

2.2 Pediatric Patients

The recommended oral dosage of scored COMBIVIR Tablets for pediatric patients who weigh greater than or equal to 30 kg and for whom a solid oral dosage form is appropriate is 1 tablet administered twice daily.

Before prescribing COMBIVIR Tablets, children should be assessed for the ability to swallow tablets. If a child is unable to reliably swallow a COMBIVIR Tablet, the liquid oral formulations should be prescribed: EPIVIR[®] (lamivudine) Oral Solution and RETROVIR[®] (zidovudine) Syrup.

2.3 Patients Requiring Dosage Adjustment

Because COMBIVIR is a fixed-dose combination tablet, it should not be prescribed for pediatric patients weighing less than 30 kg or patients requiring dosage adjustment, such as those with reduced renal function (creatinine clearance less than 50 mL/min), patients with hepatic impairment, or patients experiencing dose-limiting adverse reactions. Liquid and solid oral formulations of the individual components of COMBIVIR are available for these populations.

3 DOSAGE FORMS AND STRENGTHS

COMBIVIR Tablets contain 150 mg of lamivudine and 300 mg of zidovudine. The tablets are white, scored, film-coated, modified capsule-shaped tablets, debossed on both tablet faces, such that when broken in half, the full “GX FC3” code is present on both halves of the tablet (“GX” on one face and “FC3” on the opposite face of the tablet).

4 CONTRAINDICATIONS

COMBIVIR Tablets are contraindicated in patients with previously demonstrated clinically significant hypersensitivity (e.g., anaphylaxis, Stevens-Johnson syndrome) to any of the components of the product.

5 WARNINGS AND PRECAUTIONS

5.1 Hemotologic Toxicity/Bone Marrow Suppression

Zidovudine, a component of COMBIVIR, has been associated with hematologic toxicity including neutropenia and anemia, particularly in patients with advanced HIV-1 disease. COMBIVIR should be used with caution in patients who have bone marrow compromise evidenced by granulocyte count less than 1,000 cells/mm³ or hemoglobin less than 9.5 g/dL [*see Adverse Reactions (6.1)*].

Frequent blood counts are strongly recommended in patients with advanced HIV-1 disease who are treated with COMBIVIR. Periodic blood counts are recommended for other HIV-1-infected patients. If anemia or neutropenia develops, dosage interruption may be needed.

5.2 Myopathy

Myopathy and myositis, with pathological changes similar to that produced by HIV-1 disease, have been associated with prolonged use of zidovudine, and therefore may occur with therapy with COMBIVIR.

5.3 Lactic Acidosis/Hepatomegaly With Steatosis

Lactic acidosis and hepatomegaly with steatosis, including fatal cases, have been reported with the use of nucleoside analogues alone or in combination, including lamivudine, zidovudine, and other antiretrovirals. A majority of these cases have been in women. Obesity and prolonged nucleoside exposure may be risk factors. Particular caution should be exercised when administering COMBIVIR to any patient with known risk factors for liver disease; however, cases have also been reported in patients with no known risk factors. Treatment with COMBIVIR should be suspended in any patient who develops clinical or laboratory findings suggestive of lactic acidosis or pronounced hepatotoxicity (which may include hepatomegaly and steatosis even in the absence of marked transaminase elevations).

5.4 Patients With HIV-1 and Hepatitis B Virus Co-infection

Posttreatment Exacerbations of Hepatitis: In clinical trials in non-HIV-1-infected patients treated with lamivudine for chronic HBV, clinical and laboratory evidence of exacerbations of hepatitis have occurred after discontinuation of lamivudine. These exacerbations have been detected primarily by serum ALT elevations in addition to re-emergence of hepatitis B viral DNA (HBV DNA). Although most events appear to have been self-limited, fatalities have been reported in some cases. Similar events have been reported from post-marketing experience after changes from lamivudine-containing HIV-1 treatment regimens to non-lamivudine-containing regimens in patients infected with both HIV-1 and HBV. The causal relationship to discontinuation of lamivudine treatment is unknown. Patients should be closely monitored with both clinical and laboratory follow-up for at least several months after stopping treatment. There is insufficient evidence to determine whether re-initiation of lamivudine alters the course of posttreatment exacerbations of hepatitis.

Important Differences Among Lamivudine-Containing Products: COMBIVIR Tablets contain a higher dose of the same active ingredient (lamivudine) than EPIVIR-HBV[®] (lamivudine) Tablets and Oral Solution. EPIVIR-HBV was developed for treating chronic hepatitis B. Safety and efficacy of lamivudine have not been established for treatment of chronic hepatitis B in patients co-infected with HIV-1 and HBV.

Emergence of Lamivudine-Resistant HBV: In non-HIV-infected patients treated with lamivudine for chronic hepatitis B, emergence of lamivudine-resistant HBV has been detected and has been associated with diminished treatment response (see full prescribing information for EPIVIR-HBV for additional information). Emergence of hepatitis B virus variants associated with resistance to lamivudine has also been reported in HIV-1-infected patients who have received lamivudine-containing antiretroviral regimens in the presence of concurrent infection with hepatitis B virus.

5.5 Use With Other, Lamivudine-, Zidovudine-, and/or Emtricitabine-Containing Products

COMBIVIR is a fixed-dose combination of lamivudine and zidovudine. COMBIVIR should not be administered concomitantly with other lamivudine- or zidovudine-containing products including EPIVIR[®] (lamivudine) Tablets and Oral Solution; EPIVIR-HBV Tablets and Oral Solution; RETROVIR[®] (zidovudine) Tablets, Capsules, Syrup, and IV Infusion; EPZICOM[®] (abacavir sulfate and lamivudine) Tablets; or TRIZIVIR[®] (abacavir sulfate, lamivudine, and zidovudine) Tablets; or emtricitabine-containing products, including ATRIPLA[®] (efavirenz, emtricitabine, and tenofovir), EMTRIVA[®] (emtricitabine), TRUVADA[®] (emtricitabine and tenofovir), or COMPLERA[®] (rilpivirine/emtricitabine/tenofovir).

5.6 Use With Interferon- and Ribavirin-Based Regimens

In vitro studies have shown ribavirin can reduce the phosphorylation of pyrimidine nucleoside

analogues such as lamivudine and zidovudine. Although no evidence of a pharmacokinetic or pharmacodynamic interaction (e.g., loss of HIV-1/HCV virologic suppression) was seen when ribavirin was coadministered with lamivudine or zidovudine in HIV-1/HCV co-infected patients [*see Clinical Pharmacology (12.3)*], hepatic decompensation (some fatal) has occurred in HIV-1/HCV co-infected patients receiving combination antiretroviral therapy for HIV-1 and interferon alfa with or without ribavirin. Patients receiving interferon alfa with or without ribavirin and COMBIVIR should be closely monitored for treatment-associated toxicities, especially hepatic decompensation, neutropenia, and anemia. Discontinuation of COMBIVIR should be considered as medically appropriate. Dose reduction or discontinuation of interferon alfa, ribavirin, or both should also be considered if worsening clinical toxicities are observed, including hepatic decompensation (e.g., Child-Pugh greater than 6) (see the complete prescribing information for interferon and ribavirin).

Exacerbation of anemia has been reported in HIV-1/HCV co-infected patients receiving ribavirin and zidovudine. Coadministration of ribavirin and zidovudine is not advised.

5.7 Pancreatitis

COMBIVIR should be used with caution in patients with a history of pancreatitis or other significant risk factors for the development of pancreatitis. Treatment with COMBIVIR should be stopped immediately if clinical signs, symptoms, or laboratory abnormalities suggestive of pancreatitis occur [*see Adverse Reactions (6.1)*].

5.8 Immune Reconstitution Syndrome

Immune reconstitution syndrome has been reported in patients treated with combination antiretroviral therapy, including COMBIVIR. During the initial phase of combination antiretroviral treatment, patients whose immune systems respond may develop an inflammatory response to indolent or residual opportunistic infections (such as *Mycobacterium avium* infection, cytomegalovirus, *Pneumocystis jirovecii* pneumonia [PCP], or tuberculosis), which may necessitate further evaluation and treatment.

Autoimmune disorders (such as Graves' disease, polymyositis, and Guillain-Barré syndrome) have also been reported to occur in the setting of immune reconstitution; however, the time to onset is more variable, and can occur many months after initiation of treatment.

5.9 Fat Redistribution

Redistribution/accumulation of body fat including central obesity, dorsocervical fat enlargement (buffalo hump), peripheral wasting, facial wasting, breast enlargement, and "cushingoid appearance" have been observed in patients receiving antiretroviral therapy. The mechanism and long-term consequences of these events are currently unknown. A causal relationship has not been established.

6 ADVERSE REACTIONS

The following adverse reactions are discussed in greater detail in other sections of the labeling:

- Hematologic toxicity, including neutropenia and anemia [*see Boxed Warning, Warnings and Precautions (5.1)*].
- Symptomatic myopathy [*see Boxed Warning, Warnings and Precautions (5.2)*].
- Lactic acidosis and hepatomegaly with steatosis [*see Boxed Warning, Warnings and Precautions (5.3)*].
- Acute exacerbations of hepatitis B [*see Boxed Warning, Warnings and Precautions (5.4)*].
- Hepatic decompensation in patients co-infected with HIV-1 and hepatitis C [*see Warnings and Precautions (5.6)*].
- Exacerbation of anemia in HIV-1/HCV co-infected patients receiving ribavirin and zidovudine [*see Warnings and Precautions (5.6)*].

- Pancreatitis [see Warnings and Precautions (5.7)].

6.1 Clinical Trials Experience

Because clinical trials are conducted under widely varying conditions, adverse reaction rates observed in the clinical trials of a drug cannot be directly compared with rates in the clinical trials of another drug and may not reflect the rates observed in practice.

Lamivudine Plus Zidovudine Administered As Separate Formulations: In 4 randomized, controlled trials of EPIVIR 300 mg per day plus RETROVIR 600 mg per day, the following selected adverse reactions and laboratory abnormalities were observed (see Tables 1 and 2).

Table 1. Selected Clinical Adverse Reactions (≥5% Frequency) in 4 Controlled Clinical Trials With EPIVIR 300 mg/day and RETROVIR 600 mg/day

Adverse Reaction	EPIVIR plus RETROVIR (n = 251)
Body as a whole	
Headache	35%
Malaise & fatigue	27%
Fever or chills	10%
Digestive	
Nausea	33%
Diarrhea	18%
Nausea & vomiting	13%
Anorexia and/or decreased appetite	10%
Abdominal pain	9%
Abdominal cramps	6%
Dyspepsia	5%
Nervous system	
Neuropathy	12%
Insomnia & other sleep disorders	11%
Dizziness	10%
Depressive disorders	9%
Respiratory	
Nasal signs & symptoms	20%
Cough	18%
Skin	
Skin rashes	9%
Musculoskeletal	
Musculoskeletal pain	12%
Myalgia	8%
Arthralgia	5%

Pancreatitis was observed in 9 of the 2,613 adult subjects (0.3%) who received EPIVIR in controlled clinical trials [see Warnings and Precautions (5.7)].

Selected laboratory abnormalities observed during therapy are listed in Table 2.

Table 2. Frequencies of Selected Laboratory Abnormalities Among Adults in 4 Controlled Clinical Trials of EPIVIR 300 mg/day plus RETROVIR 600 mg/day^a

Test (Abnormal Level)	EPIVIR plus RETROVIR % (n)
Neutropenia (ANC<750/mm ³)	7.2% (237)
Anemia (Hgb<8.0 g/dL)	2.9% (241)
Thrombocytopenia (platelets<50,000/mm ³)	0.4% (240)
ALT (>5.0 x ULN)	3.7% (241)
AST (>5.0 x ULN)	1.7% (241)
Bilirubin (>2.5 x ULN)	0.8% (241)
Amylase (>2.0 x ULN)	4.2% (72)
ULN = Upper limit of normal. ANC = Absolute neutrophil count. n = Number of subjects assessed. ^a Frequencies of these laboratory abnormalities were higher in subjects with mild laboratory abnormalities at baseline.	

6.2 Postmarketing Experience

In addition to adverse reactions reported from clinical trials, the following reactions have been identified during post-approval use of EPIVIR, RETROVIR, and/or COMBIVIR. Because they are reported voluntarily from a population of unknown size, estimates of frequency cannot be made. These events have been chosen for inclusion due to a combination of their seriousness, frequency of reporting, or potential causal connection to EPIVIR, RETROVIR, and/or COMBIVIR.

Body as a Whole: Redistribution/accumulation of body fat [see Warnings and Precautions (5.9)].

Cardiovascular: Cardiomyopathy.

Endocrine and Metabolic: Gynecomastia, hyperglycemia.

Gastrointestinal: Oral mucosal pigmentation, stomatitis.

General: Vasculitis, weakness.

Hemic and Lymphatic: Anemia, (including pure red cell aplasia and anemias progressing on therapy), lymphadenopathy, splenomegaly.

Hepatic and Pancreatic: Lactic acidosis and hepatic steatosis, pancreatitis, posttreatment exacerbation of hepatitis B [see Boxed Warning, Warnings and Precautions (5.3), (5.4), (5.7)].

Hypersensitivity: Sensitization reactions (including anaphylaxis), urticaria.

Musculoskeletal: Muscle weakness, CPK elevation, rhabdomyolysis.

Nervous: Paresthesia, peripheral neuropathy, seizures.

Respiratory: Abnormal breath sounds/wheezing.

Skin: Alopecia, erythema multiforme, Stevens-Johnson syndrome.

7 DRUG INTERACTIONS

No drug interaction trials have been conducted using COMBIVIR Tablets [see Clinical Pharmacology (12.3)].

7.1 Antiretroviral Agents

Lamivudine: Zalcitabine: Lamivudine and zalcitabine may inhibit the intracellular phosphorylation of one another. Therefore, use of COMBIVIR in combination with zalcitabine is not recommended.

Zidovudine: Stavudine: Concomitant use of COMBIVIR with stavudine should be avoided since an

antagonistic relationship with zidovudine has been demonstrated in vitro.

Nucleoside Analogues Affecting DNA Replication: Some nucleoside analogues affecting DNA replication, such as ribavirin, antagonize the in vitro antiviral activity of zidovudine against HIV-1; concomitant use of such drugs should be avoided.

7.2 Doxorubicin

Zidovudine: Concomitant use of COMBIVIR with doxorubicin should be avoided since an antagonistic relationship with zidovudine has been demonstrated in vitro.

7.3 Hematologic/Bone Marrow Suppressive/Cytotoxic Agents

Zidovudine: Coadministration of ganciclovir, interferon alfa, ribavirin, and other bone marrow suppressive or cytotoxic agents may increase the hematologic toxicity of zidovudine.

7.4 Interferon- and Ribavirin-Based Regimens

Lamivudine: Although no evidence of a pharmacokinetic or pharmacodynamic interaction (e.g., loss of HIV-1/HCV virologic suppression) was seen when ribavirin was coadministered with lamivudine in HIV-1/HCV co-infected patients, hepatic decompensation (some fatal) has occurred in HIV-1/HCV co-infected patients receiving combination antiretroviral therapy for HIV-1 and interferon alfa with or without ribavirin [*see Warnings and Precautions (5.5), Clinical Pharmacology (12.3)*].

7.5 Trimethoprim/Sulfamethoxazole (TMP/SMX)

Lamivudine: No change in dose of either drug is recommended. There is no information regarding the effect on lamivudine pharmacokinetics of higher doses of TMP/SMX such as those used to treat PCP.

8 USE IN SPECIFIC POPULATIONS

8.1 Pregnancy

Pregnancy Category C.

Fetal Risk Summary: There are no adequate and well-controlled trials of COMBIVIR (lamivudine and zidovudine) in pregnant women. Clinical trial data demonstrate that maternal zidovudine treatment during pregnancy reduces vertical transmission of HIV-1 infection to the fetus. Animal reproduction studies performed with lamivudine and zidovudine showed increased embryotoxicity and fetal malformations (zidovudine), and increased embryoletality (lamivudine). COMBIVIR should be used during pregnancy only if the potential benefit justifies the potential risk to the fetus.

Antiretroviral Pregnancy Registry: To monitor maternal-fetal outcomes of pregnant women exposed to COMBIVIR and other antiretroviral agents, an Antiretroviral Pregnancy Registry has been established. Physicians are encouraged to register patients by calling 1-800-258-4263.

Clinical Considerations: Treatment of HIV during pregnancy optimizes the health of both mother and fetus. Clinical trial data reviewed by FDA demonstrate that maternal zidovudine treatment significantly reduces vertical transmission of HIV-1 infection to the fetus [*see Clinical Studies (14.2)*]. Published data suggest that combination antiretroviral regimens may reduce the rate of vertical transmission even further.

Pharmacokinetics of lamivudine and zidovudine in pregnant women are similar to the pharmacokinetics in nonpregnant women. No dose adjustments are needed during pregnancy.

In a clinical trial, adverse events among HIV-1-infected women were not different among untreated women and women treated with zidovudine. It is not known whether risks of adverse events associated with lamivudine are altered in pregnant women compared with other HIV-1-infected patients (see Human data below).

Data: Human Data: Lamivudine: Lamivudine pharmacokinetics were studied in pregnant women during 2 clinical trials conducted in South Africa. The trial assessed pharmacokinetics in: 16 women at 36 weeks gestation using 150 mg lamivudine twice daily with zidovudine, 10 women at 38 weeks gestation using 150 mg lamivudine twice daily with zidovudine, and 10 women at 38 weeks gestation using lamivudine 300 mg twice daily without other antiretrovirals. Lamivudine pharmacokinetics in pregnant women were similar to those seen in nonpregnant adults and in postpartum women. Lamivudine concentrations were generally similar in maternal, neonatal, and umbilical cord serum samples.

Zidovudine: A randomized, double-blind, placebo-controlled trial was conducted in HIV-1-infected pregnant women to determine the utility of zidovudine for the prevention of maternal-fetal HIV-1 transmission. Zidovudine treatment during pregnancy reduced the rate of maternal-fetal HIV-1 transmission from 24.9% for infants born to placebo-treated mothers to 7.8% for infants born to mothers treated with zidovudine. There were no differences in pregnancy-related adverse events between the treatment groups. Congenital abnormalities occurred with similar frequency between neonates born to mothers who received zidovudine and neonates born to mothers who received placebo. The observed abnormalities included problems in embryogenesis (prior to 14 weeks) or were recognized on ultrasound before or immediately after initiation of trial drug [see *Clinical Studies (14.2)*].

Zidovudine pharmacokinetics were studied in a Phase 1 trial of 8 women during the last trimester of pregnancy. As pregnancy progressed, there was no evidence of drug accumulation. The pharmacokinetics of zidovudine were similar to that of nonpregnant adults. Consistent with passive transmission of the drug across the placenta, zidovudine concentrations in neonatal plasma at birth were essentially equal to those in maternal plasma at delivery.

Animal Data: Lamivudine: Animal reproduction studies performed at oral doses up to 130 and 60 times the adult dose in rats and rabbits, respectively, revealed no evidence of teratogenicity due to lamivudine. Increased early embryoletality occurred in rabbits at exposure levels similar to those in humans. However, there was no indication of this effect in rats at exposure levels up to 35 times those in humans. Based on animal studies, lamivudine crosses the placenta and is transferred to the fetus [see *Nonclinical Toxicology (13.2)*].

Zidovudine: Increased fetal resorptions occurred in pregnant rats and rabbits treated with doses of zidovudine that produced drug plasma concentrations 66 to 226 times (rats) and 12 to 87 times (rabbits) the mean steady-state peak human plasma concentration following a single 100-mg dose of zidovudine. There were no other reported developmental anomalies. In another developmental toxicity study, pregnant rats received zidovudine up to near-lethal doses that produced peak plasma concentrations 350 times peak human plasma concentrations (300 times the daily exposure [AUC] in humans given 600 mg/day zidovudine). This dose was associated with marked maternal toxicity and an increased incidence of fetal malformations. However, there were no signs of teratogenicity at doses up to one-fifth the lethal dose [see *Nonclinical Toxicology(13.2)*].

8.3 Nursing Mothers

The Centers for Disease Control and Prevention recommend that HIV-1-infected mothers in the United States not breastfeed their infants to avoid risking postnatal transmission of HIV-1 infection. Because of both the potential for HIV-1 transmission and serious adverse reactions in nursing infants, mothers should be instructed not to breastfeed if they are receiving COMBIVIR.

Although no trials of COMBIVIR excretion in breast milk have been performed, lactation trials performed with lamivudine and zidovudine show that both drugs are excreted in human breast milk. Samples of breast milk obtained from 20 mothers receiving lamivudine monotherapy (300 mg twice daily) or combination therapy (150 mg lamivudine twice daily and 300 mg zidovudine twice daily) had measurable concentrations of lamivudine. In another trial, after administration of a single dose of 200 mg zidovudine to 13 HIV-1-infected women, the mean concentration of zidovudine was similar in human milk and serum.

8.4 Pediatric Use

COMBIVIR should not be administered to pediatric patients weighing less than 30 kg, because it is a fixed-dose combination that cannot be adjusted for this patient population.

8.5 Geriatric Use

Clinical trials of COMBIVIR did not include sufficient numbers of subjects aged 65 and over to determine whether they respond differently from younger subjects. In general, dose selection for an elderly patient should be cautious, reflecting the greater frequency of decreased hepatic, renal, or cardiac function, and of concomitant disease or other drug therapy. COMBIVIR is not recommended for patients with impaired renal function (i.e., creatinine clearance less than 50 mL/min) because it is a fixed-dose combination that cannot be adjusted.

8.6 Renal Impairment

Reduction of the dosages of lamivudine and zidovudine is recommended for patients with impaired renal function. Patients with creatinine clearance less than 50 mL/min should not receive COMBIVIR because it is a fixed-dose combination that cannot be adjusted.

8.7 Hepatic Impairment

A reduction in the daily dose of zidovudine may be necessary in patients with mild to moderate impaired hepatic function or liver cirrhosis. COMBIVIR is not recommended for patients with impaired hepatic function because it is a fixed-dose combination that cannot be adjusted.

10 OVERDOSAGE

COMBIVIR: There is no known antidote for COMBIVIR.

Lamivudine: One case of an adult ingesting 6 grams of lamivudine was reported; there were no clinical signs or symptoms noted and hematologic tests remained normal. Because a negligible amount of lamivudine was removed via (4-hour) hemodialysis, continuous ambulatory peritoneal dialysis, and automated peritoneal dialysis, it is not known if continuous hemodialysis would provide clinical benefit in a lamivudine overdose event.

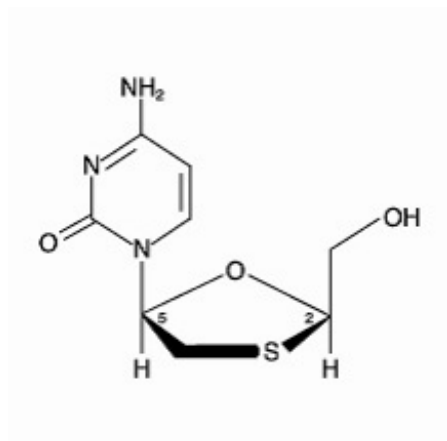
Zidovudine: Acute overdoses of zidovudine have been reported in pediatric patients and adults. These involved exposures up to 50 grams. The only consistent findings were nausea and vomiting. Other reported occurrences included headache, dizziness, drowsiness, lethargy, confusion, and 1 report of a grand mal seizure. Hematologic changes were transient. All patients recovered. Hemodialysis and peritoneal dialysis appear to have a negligible effect on the removal of zidovudine, while elimination of its primary metabolite, 3'-azido-3'-deoxy-5'-O-β-D-glucopyranuronosylthymidine (GZDV), is enhanced.

11 DESCRIPTION

COMBIVIR: COMBIVIR Tablets are combination tablets containing lamivudine and zidovudine. Lamivudine (EPIVIR) and zidovudine (RETROVIR, azidothymidine, AZT, or ZDV) are synthetic nucleoside analogues with activity against HIV-1.

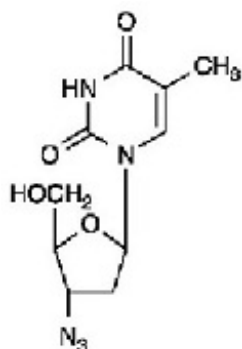
COMBIVIR Tablets are for oral administration. Each film-coated tablet contains 150 mg of lamivudine, 300 mg of zidovudine, and the inactive ingredients colloidal silicon dioxide, hypromellose, magnesium stearate, microcrystalline cellulose, polyethylene glycol, polysorbate 80, sodium starch glycolate, and titanium dioxide.

Lamivudine: The chemical name of lamivudine is (2R,cis)-4-amino-1-(2-hydroxymethyl-1,3-oxathiolan-5-yl)-(1H)-pyrimidin-2-one. Lamivudine is the (-)enantiomer of a dideoxy analogue of cytidine. Lamivudine has also been referred to as (-)2',3'-dideoxy, 3'-thiacytidine. It has a molecular formula of C₈H₁₁N₃O₃S and a molecular weight of 229.3. It has the following structural formula:



Lamivudine is a white to off-white crystalline solid with a solubility of approximately 70 mg/mL in water at 20°C.

Zidovudine: The chemical name of zidovudine is 3'-azido-3'-deoxythymidine. It has a molecular formula of C₁₀H₁₃N₅O₄ and a molecular weight of 267.24. It has the following structural formula:



Zidovudine is a white to beige, odorless, crystalline solid with a solubility of 20.1 mg/mL in water at 25°C.

12 CLINICAL PHARMACOLOGY

12.1 Mechanism of Action

COMBIVIR is an antiviral agent [see *Clinical Pharmacology (12.4)*].

12.3 Pharmacokinetics

Pharmacokinetics in Adults: *COMBIVIR:* One *COMBIVIR* Tablet was bioequivalent to 1 *EPIVIR* Tablet (150 mg) plus 1 *RETROVIR* Tablet (300 mg) following single-dose administration to fasting healthy subjects (n = 24).

Lamivudine: The pharmacokinetic properties of lamivudine in fasting subjects are summarized in Table 3. Following oral administration, lamivudine is rapidly absorbed and extensively distributed. Binding to plasma protein is low. Approximately 70% of an intravenous dose of lamivudine is recovered as unchanged drug in the urine. Metabolism of lamivudine is a minor route of elimination. In humans, the only known metabolite is the trans-sulfoxide metabolite (approximately 5% of an oral dose after 12 hours).

Zidovudine: The pharmacokinetic properties of zidovudine in fasting subjects are summarized in

Table 3. Following oral administration, zidovudine is rapidly absorbed and extensively distributed. Binding to plasma protein is low. Zidovudine is eliminated primarily by hepatic metabolism. The major metabolite of zidovudine is GZDV. GZDV area under the curve (AUC) is about 3-fold greater than the zidovudine AUC. Urinary recovery of zidovudine and GZDV accounts for 14% and 74% of the dose following oral administration, respectively. A second metabolite, 3'-amino-3'-deoxythymidine (AMT), has been identified in plasma. The AMT AUC was one fifth of the zidovudine AUC.

Table 3. Pharmacokinetic Parameters^a for Lamivudine and Zidovudine in Adults

Parameter	Lamivudine		Zidovudine	
Oral bioavailability (%)	86 ± 16	N = 12	64 ± 10	n = 5
Apparent volume of distribution (L/kg)	1.3 ± 0.4	N = 20	1.6 ± 0.6	n = 8
Plasma protein binding (%)	<36		<38	
CSF:plasma ratio ^b	0.12 [0.04 to 0.47]	n = 38 ^c	0.60 [0.04 to 2.62]	N = 39 ^d
Systemic clearance (L/hr/kg)	0.33 ± 0.06	N = 20	1.6 ± 0.6	n = 6
Renal clearance (L/hr/kg)	0.22 ± 0.06	N = 20	0.34 ± 0.05	n = 9
Elimination half-life (hr) ^e	5 to 7		0.5 to 3	
^a Data presented as mean ± standard deviation except where noted.				
^b Median [range].				
^c Children.				
^d Adults.				
^e Approximate range.				

Effect of Food on Absorption of COMBIVIR: COMBIVIR may be administered with or without food. The lamivudine and zidovudine AUC following administration of COMBIVIR with food was similar when compared with fasting healthy subjects (n = 24).

Special Populations:

Pregnancy: See *Use in Specific Populations (8.1)*.

COMBIVIR: No data are available.

Zidovudine: Zidovudine pharmacokinetics has been studied in a Phase 1 trial of 8 women during the last trimester of pregnancy. As pregnancy progressed, there was no evidence of drug accumulation. The pharmacokinetics of zidovudine was similar to that of nonpregnant adults. Consistent with passive transmission of the drug across the placenta, zidovudine concentrations in neonatal plasma at birth were essentially equal to those in maternal plasma at delivery. Although data are limited, methadone maintenance therapy in 5 pregnant women did not appear to alter zidovudine pharmacokinetics. In a nonpregnant adult population, a potential for interaction has been identified.

Nursing Mothers: See *Use in Specific Populations (8.3)*.

Pediatric Patients: COMBIVIR should not be administered to pediatric patients weighing less than 30 kg.

Geriatric Patients: The pharmacokinetics of lamivudine and zidovudine have not been studied in patients over 65 years of age.

Gender: A pharmacokinetic trial in healthy male (n = 12) and female (n = 12) subjects showed no gender differences in zidovudine AUC_∞ or lamivudine AUC_∞ normalized for body weight.

Race: *Lamivudine:* There are no significant racial differences in lamivudine pharmacokinetics.

Zidovudine: The pharmacokinetics of zidovudine with respect to race have not been determined.

Drug Interactions: See *Drug Interactions (7)*.

No drug interaction trials have been conducted using COMBIVIR Tablets. However, Table 4 presents drug interaction information for the individual components of COMBIVIR.

Lamivudine Plus Zidovudine: No clinically significant alterations in lamivudine or zidovudine pharmacokinetics were observed in 12 asymptomatic HIV-1-infected adult subjects given a single dose of zidovudine (200 mg) in combination with multiple doses of lamivudine (300 mg q 12 hr).

Table 4. Effect of Coadministered Drugs on Lamivudine and Zidovudine AUC^a

Note: ROUTINE DOSE MODIFICATION OF LAMIVUDINE AND ZIDOVUDINE IS NOT WARRANTED WITH COADMINISTRATION OF THE FOLLOWING DRUGS.

Drugs That May Alter Lamivudine Blood Concentrations					
Coadministered Drug and Dose	Lamivudine Dose	n	Lamivudine Concentrations		Concentration of Coadministered Drug
			AUC	Variability	
Nelfinavir 750 mg q 8 hr x 7 to 10 days	single 150 mg	11	↑AUC 10%	95% CI: 1% to 20%	↔
Trimethoprim 160 mg/Sulfamethoxazole 800 mg daily x 5 days	single 300 mg	14	↑AUC 43%	90% CI: 32% to 55%	↔
Drugs That May Alter Zidovudine Blood Concentrations					
Coadministered Drug and Dose	Zidovudine Dose	n	Zidovudine Concentrations		Concentration of Coadministered Drug
			AUC	Variability	
Atovaquone 750 mg q 12 hr with food	200 mg q 8 hr	14	↑AUC 31%	Range 23% to 78% ^b	↔
Clarithromycin 500 mg twice daily	100 mg q 4 hr x 7 days	4	↓AUC 12%	Range ↓34% to ↑14%	Not Reported
Fluconazole 400 mg daily	200 mg q 8 hr	12	↑AUC 74%	95% CI: 54% to 98%	Not Reported
Methadone 30 to 90 mg daily	200 mg q 4 hr	9	↑AUC 43%	Range 16% to 64% ^b	↔
Nelfinavir 750 mg q 8 hr x 7 to 10 days	single 200 mg	11	↓AUC 35%	Range 28% to 41%	↔
Probenecid 500 mg q 6 hr x 2 days	2 mg/kg q 8 hr x 3 days	3	↑AUC 106%	Range 100% to 170% ^b	Not Assessed
Rifampin 600 mg daily x 14 days	200 mg q 8 hr X 14 days	8	↓AUC 47%	90% CI: 41% to 53%	Not Assessed
Ritonavir 300 mg q 6 hr x 4 days	200 mg q 8 hr x 4 days	9	↓AUC 25%	95% CI: 15% to 34%	↔
Valproic acid 250 mg or 500 mg q 8 hr x 4 days	100 mg q 8 hr x 4 days	6	↑AUC 80%	Range 64% to 130% ^b	Not Assessed

↑ = Increase; ↓ = Decrease; ↔ = no significant change; AUC = area under the concentration versus time curve; CI = confidence interval.

^a This table is not all inclusive.

^b Estimated range of percent difference.

Ribavirin: In vitro data indicate ribavirin reduces phosphorylation of lamivudine, stavudine, and

zidovudine. However, no pharmacokinetic (e.g., plasma concentrations or intracellular triphosphorylated active metabolite concentrations) or pharmacodynamic (e.g., loss of HIV-1/HCV virologic suppression) interaction was observed when ribavirin and lamivudine (n = 18), stavudine (n = 10), or zidovudine (n = 6) were coadministered as part of a multi-drug regimen to HIV-1/HCV co-infected subjects [see *Warnings and Precautions* (5.5)].

12.4 Microbiology

Mechanism of Action: *Lamivudine:* Intracellularly, lamivudine is phosphorylated to its active 5'-triphosphate metabolite, lamivudine triphosphate (3TC-TP). The principal mode of action of 3TC-TP is inhibition of reverse transcriptase (RT) via DNA chain termination after incorporation of the nucleotide analogue. 3TC-TP is a weak inhibitor of cellular DNA polymerases α , β , and γ .

Zidovudine: Intracellularly, zidovudine is phosphorylated to its active 5'-triphosphate metabolite, zidovudine triphosphate (ZDV-TP). The principal mode of action of ZDV-TP is inhibition of RT via DNA chain termination after incorporation of the nucleotide analogue. ZDV-TP is a weak inhibitor of the cellular DNA polymerases α and γ and has been reported to be incorporated into the DNA of cells in culture.

Antiviral Activity: *Lamivudine Plus Zidovudine:* In HIV-1–infected MT-4 cells, lamivudine in combination with zidovudine at various ratios exhibited synergistic antiretroviral activity.

Lamivudine: The antiviral activity of lamivudine against HIV-1 was assessed in a number of cell lines (including monocytes and fresh human peripheral blood lymphocytes) using standard susceptibility assays. EC₅₀ values (50% effective concentrations) were in the range of 0.003 to 15 μ M (1 μ M = 0.23 mcg/mL). HIV-1 from therapy-naïve subjects with no amino acid substitutions associated with resistance gave median EC₅₀ values of 0.429 μ M (range: 0.200 to 2.007 μ M) from Virco (n = 92 baseline samples from COL40263) and 2.35 μ M (1.37 to 3.68 μ M) from Monogram Biosciences (n = 135 baseline samples from ESS30009). The EC₅₀ values of lamivudine against different HIV-1 clades (A-G) ranged from 0.001 to 0.120 μ M, and against HIV-2 isolates from 0.003 to 0.120 μ M in peripheral blood mononuclear cells. Ribavirin (50 μ M) decreased the anti-HIV-1 activity of lamivudine by 3.5 fold in MT-4 cells.

Zidovudine: The antiviral activity of zidovudine against HIV-1 was assessed in a number of cell lines (including monocytes and fresh human peripheral blood lymphocytes). The EC₅₀ and EC₉₀ values for zidovudine were 0.01 to 0.49 μ M (1 μ M = 0.27 mcg/mL) and 0.1 to 9 μ M, respectively. HIV-1 from therapy-naïve subjects with no amino acid substitutions associated with resistance gave median EC₅₀ values of 0.011 μ M (range: 0.005 to 0.110 μ M) from Virco (n = 92 baseline samples from COL40263) and 0.0017 μ M (0.006 to 0.0340 μ M) from Monogram Biosciences (n = 135 baseline samples from ESS30009). The EC₅₀ values of zidovudine against different HIV-1 clades (A-G) ranged from 0.00018 to 0.02 μ M, and against HIV-2 isolates from 0.00049 to 0.004 μ M. In cell culture drug combination studies, zidovudine demonstrates synergistic activity with the nucleoside reverse transcriptase inhibitors (NRTIs) abacavir, didanosine, lamivudine, and zalcitabine; the non-nucleoside reverse transcriptase inhibitors (NNRTIs) delavirdine and nevirapine; and the protease inhibitors (PIs) indinavir, nelfinavir, ritonavir, and saquinavir; and additive activity with interferon alfa. Ribavirin has been found to inhibit the phosphorylation of zidovudine in cell culture.

Resistance: *Lamivudine Plus Zidovudine Administered As Separate Formulations:* In subjects receiving lamivudine monotherapy or combination therapy with lamivudine plus zidovudine, HIV-1 isolates from most subjects became phenotypically and genotypically resistant to lamivudine within 12 weeks. In some subjects harboring zidovudine-resistant virus at baseline, phenotypic sensitivity to zidovudine was restored by 12 weeks of treatment with lamivudine and zidovudine. Combination therapy with lamivudine plus zidovudine delayed the emergence of amino acid substitutions conferring resistance to zidovudine.

HIV-1 strains resistant to both lamivudine and zidovudine have been isolated from subjects after prolonged lamivudine/zidovudine therapy. Dual resistance required the presence of multiple amino acid substitutions, the most essential of which may be G333E. The incidence of dual resistance and the

duration of combination therapy required before dual resistance occurs are unknown.

Lamivudine: Lamivudine-resistant isolates of HIV-1 have been selected in cell culture and have also been recovered from subjects treated with lamivudine or lamivudine plus zidovudine. Genotypic analysis of isolates selected in cell culture and recovered from lamivudine-treated subjects showed that the resistance was due to a specific amino acid substitution in the HIV-1 reverse transcriptase at codon 184 changing the methionine to either isoleucine or valine (M184V/I).

Zidovudine: HIV-1 isolates with reduced susceptibility to zidovudine have been selected in cell culture and were also recovered from subjects treated with zidovudine. Genotypic analyses of the isolates selected in cell culture and recovered from zidovudine-treated subjects showed substitutions in the HIV-1 RT gene resulting in 6 amino acid substitutions (M41L, D67N, K70R, L210W, T215Y or F, and K219Q) that confer zidovudine resistance. In general, higher levels of resistance were associated with greater number of amino acid substitutions.

Cross-Resistance: Cross-resistance has been observed among NRTIs.

Lamivudine Plus Zidovudine: Cross-resistance between lamivudine and zidovudine has not been reported. In some subjects treated with lamivudine alone or in combination with zidovudine, isolates have emerged with a substitution at codon 184, which confers resistance to lamivudine. Cross-resistance to abacavir, didanosine, tenofovir, and zalcitabine has been observed in some subjects harboring lamivudine-resistant HIV-1 isolates. In some subjects treated with zidovudine plus didanosine or zalcitabine, isolates resistant to multiple drugs, including lamivudine, have emerged (see under Zidovudine below).

Lamivudine: See Lamivudine Plus Zidovudine (above).

Zidovudine: In a trial of 167 HIV-1-infected subjects, isolates (n = 2) with multi-drug resistance to didanosine, lamivudine, stavudine, zalcitabine, and zidovudine were recovered from subjects treated for ≥1 year with zidovudine plus didanosine or zidovudine plus zalcitabine. The pattern of resistance-associated amino acid substitutions with such combination therapies was different (A62V, V75I, F77L, F116Y, Q151M) from the pattern with zidovudine monotherapy, with the Q151M substitution being most commonly associated with multi-drug resistance. The substitution at codon 151 in combination with substitutions at 62, 75, 77, and 116 results in a virus with reduced susceptibility to didanosine, lamivudine, stavudine, zalcitabine, and zidovudine. Thymidine analogue mutations (TAMs) are selected by zidovudine and confer cross-resistance to abacavir, didanosine, stavudine, tenofovir, and zalcitabine.

13 NONCLINICAL TOXICOLOGY

13.1 Carcinogenesis, Mutagenesis, Impairment of Fertility

Carcinogenicity: *Lamivudine:* Long-term carcinogenicity studies with lamivudine in mice and rats showed no evidence of carcinogenic potential at exposures up to 10 times (mice) and 58 times (rats) those observed in humans at the recommended therapeutic dose for HIV-1 infection.

Zidovudine: Zidovudine was administered orally at 3 dosage levels to separate groups of mice and rats (60 females and 60 males in each group). Initial single daily doses were 30, 60, and 120 mg/kg/day in mice and 80, 220, and 600 mg/kg/day in rats. The doses in mice were reduced to 20, 30, and 40 mg/kg/day after day 90 because of treatment-related anemia, whereas in rats only the high dose was reduced to 450 mg/kg/day on day 91 and then to 300 mg/kg/day on day 279.

In mice, 7 late-appearing (after 19 months) vaginal neoplasms (5 nonmetastasizing squamous cell carcinomas, 1 squamous cell papilloma, and 1 squamous polyp) occurred in animals given the highest dose. One late-appearing squamous cell papilloma occurred in the vagina of a middle-dose animal. No vaginal tumors were found at the lowest dose.

In rats, 2 late-appearing (after 20 months), nonmetastasizing vaginal squamous cell carcinomas occurred

in animals given the highest dose. No vaginal tumors occurred at the low or middle dose in rats. No other drug-related tumors were observed in either sex of either species.

At doses that produced tumors in mice and rats, the estimated drug exposure (as measured by AUC) was approximately 3 times (mouse) and 24 times (rat) the estimated human exposure at the recommended therapeutic dose of 100 mg every 4 hours.

It is not known how predictive the results of rodent carcinogenicity studies may be for humans.

Mutagenicity: *Lamivudine:* Lamivudine was mutagenic in an L5178Y/TK^{+/-} mouse lymphoma assay and clastogenic in a cytogenetic assay using cultured human lymphocytes. Lamivudine was negative in a microbial mutagenicity assay, in an in vitro cell transformation assay, in a rat micronucleus test, in a rat bone marrow cytogenetic assay, and in an assay for unscheduled DNA synthesis in rat liver.

Zidovudine: Zidovudine was mutagenic in an L5178Y/TK^{+/-} mouse lymphoma assay, positive in an in vitro cell transformation assay, clastogenic in a cytogenetic assay using cultured human lymphocytes, and positive in mouse and rat micronucleus tests after repeated doses. It was negative in a cytogenetic study in rats given a single dose.

Impairment of Fertility: *Lamivudine:* In a study of reproductive performance, lamivudine, administered to male and female rats at doses up to 130 times the usual adult dose based on body surface area considerations, revealed no evidence of impaired fertility (judged by conception rates) and no effect on the survival, growth, and development to weaning of the offspring.

Zidovudine: Zidovudine, administered to male and female rats at doses up to 7 times the usual adult dose based on body surface area considerations, had no effect on fertility judged by conception rates.

13.2 Reproductive and Developmental Toxicology Studies

Lamivudine: Reproduction studies have been performed in rats and rabbits at orally administered doses up to 4,000 mg/kg/day and 1,000 mg/kg/day, respectively, producing plasma levels up to approximately 35 times that for the adult HIV dose. No evidence of teratogenicity due to lamivudine was observed. Evidence of early embryoletality was seen in the rabbit at exposure levels similar to those observed in humans, but there was no indication of this effect in the rat at exposure levels up to 35 times those in humans. Studies in pregnant rats and rabbits showed that lamivudine is transferred to the fetus through the placenta.

Zidovudine: Oral teratology studies in the rat and in the rabbit at doses up to 500 mg/kg/day revealed no evidence of teratogenicity with zidovudine. Zidovudine treatment resulted in embryo/fetal toxicity as evidenced by an increase in the incidence of fetal resorptions in rats given 150 or 450 mg/kg/day and rabbits given 500 mg/kg/day. The doses used in the teratology studies resulted in peak zidovudine plasma concentrations (after one half of the daily dose) in rats 66 to 226 times, and in rabbits 12 to 87 times, mean steady-state peak human plasma concentrations (after one sixth of the daily dose) achieved with the recommended daily dose (100 mg every 4 hours). In an in vitro experiment with fertilized mouse oocytes, zidovudine exposure resulted in a dose-dependent reduction in blastocyst formation. In an additional teratology study in rats, a dose of 3,000 mg/kg/day (very near the oral median lethal dose in rats of 3,683 mg/kg) caused marked maternal toxicity and an increase in the incidence of fetal malformations. This dose resulted in peak zidovudine plasma concentrations 350 times peak human plasma concentrations. (Estimated AUC in rats at this dose level was 300 times the daily AUC in humans given 600 mg/day.) No evidence of teratogenicity was seen in this experiment at doses of 600 mg/kg/day or less.

14 CLINICAL STUDIES

There have been no clinical trials conducted with COMBIVIR. See *Clinical Pharmacology (12.3)* for information about bioequivalence. One COMBIVIR Tablet given twice daily is an alternative regimen to EPIVIR Tablets 150 mg twice daily plus RETROVIR 600 mg per day in divided doses.

14.1 Adults

Lamivudine Plus Zidovudine: The NUCB3007 (CAESAR) trial was conducted using EPIVIR 150 mg Tablets (150 mg twice daily) and RETROVIR 100 mg Capsules (2 x 100 mg 3 times daily). CAESAR was a multi-center, double-blind, placebo-controlled trial comparing continued current therapy (zidovudine alone [62% of subjects] or zidovudine with didanosine or zalcitabine [38% of subjects]) to the addition of EPIVIR or EPIVIR plus an investigational non-nucleoside reverse transcriptase inhibitor, randomized 1:2:1. A total of 1,816 HIV-1-infected adults with 25 to 250 (median 122) CD4 cells/mm³ at baseline were enrolled: median age was 36 years, 87% were male, 84% were nucleoside-experienced, and 16% were therapy-naive. The median duration on trial was 12 months. Results are summarized in Table 5.

Table 5. Number of Subjects (%) With At Least 1 HIV-1 Disease-Progression Event or Death

Endpoint	Current Therapy (n = 460)	EPIVIR plus Current Therapy (n = 896)	EPIVIR plus a NNRTI ^a plus Current Therapy (n = 460)
HIV-1 progression or death	90 (19.6%)	86 (9.6%)	41 (8.9%)
Death	27 (5.9%)	23 (2.6%)	14 (3.0%)

^a An investigational non-nucleoside reverse transcriptase inhibitor not approved in the United States.

14.2 Prevention of Maternal-Fetal HIV-1 Transmission

The utility of zidovudine alone for the prevention of maternal-fetal HIV-1 transmission was demonstrated in a randomized, double-blind, placebo-controlled trial conducted in HIV-1-infected pregnant women with CD4+ cell counts of 200 to 1,818 cells/mm³ (median in the treated group: 560 cells/mm³) who had little or no previous exposure to zidovudine. Oral zidovudine was initiated between 14 and 34 weeks of gestation (median 11 weeks of therapy) followed by IV administration of zidovudine during labor and delivery. Following birth, neonates received oral zidovudine syrup for 6 weeks. The trial showed a statistically significant difference in the incidence of HIV-1 infection in the neonates (based on viral culture from peripheral blood) between the group receiving zidovudine and the group receiving placebo. Of 363 neonates evaluated in the trial, the estimated risk of HIV-1 infection was 7.8% in the group receiving zidovudine and 24.9% in the placebo group, a relative reduction in transmission risk of 68.7%. Zidovudine was well tolerated by mothers and infants. There was no difference in pregnancy-related adverse events between the treatment groups.

16 HOW SUPPLIED/STORAGE AND HANDLING

COMBIVIR Tablets, containing 150 mg lamivudine and 300 mg zidovudine, are white, scored, film-coated, modified-capsule-shaped tablets, debossed on both tablet faces, such that when broken in half, the full “GXFC3” code is present on both halves of the tablet (“GX” on one face and “FC3” on the opposite face of the tablet). They are available as follows:

60 Tablets/Bottle (NDC 49702-202-18).

Unit Dose Pack of 120 (NDC 49702-202-29).

Store between 2° and 30°C (36° and 86°F).

17 PATIENT COUNSELING INFORMATION

17.1 Advice for the Patient

Neutropenia and Anemia: Patients should be informed that the important toxicities associated with zidovudine are neutropenia and/or anemia. They should be told of the extreme importance of having their blood counts followed closely while on therapy, especially for patients with advanced HIV-1 disease [see *Boxed Warning, Warnings and Precautions (5.1)*].

Myopathy: Patients should be informed that myopathy and myositis with pathological changes, similar to that produced by HIV-1 disease, have been associated with prolonged use of zidovudine [see *Warnings and Precautions (5.2)*].

Lactic Acidosis/Hepatomegaly: Patients should be informed that some HIV medicines, including COMBIVIR, can cause a rare, but serious condition called lactic acidosis with liver enlargement (hepatomegaly) [see *Warnings and Precautions (5.3)*].

HIV-1/HBV Co-infection: Patients co-infected with HIV-1 and HBV should be informed that deterioration of liver disease has occurred in some cases when treatment with lamivudine was discontinued. Patients should be advised to discuss any changes in regimen with their physician [see *Warnings and Precautions (5.4)*].

Use With Other Lamivudine-, Zidovudine-, and/or Emtricitabine-Containing Products: COMBIVIR should not be coadministered with drugs containing lamivudine, zidovudine, or emtricitabine, including EPIVIR (lamivudine), EPIVIR-HBV (lamivudine), RETROVIR (zidovudine), EPZICOM (abacavir sulfate and lamivudine), TRIZIVIR (abacavir sulfate, lamivudine, and zidovudine), ATRIPLA (efavirenz, emtricitabine, and tenofovir), EMTRIVA (emtricitabine), TRUVADA (emtricitabine and tenofovir), or COMPLERA™ (rilpivirine/emtricitabine/tenofovir) [see *Warnings and Precautions (5.5)*].

HIV-1/HCV Co-Infection: Patients with HIV-1/HCV co-infection should be informed that hepatic decompensation (some fatal) has occurred in HIV-1/HCV co-infected patients receiving combination antiretroviral therapy for HIV-1 and interferon alfa with or without ribavirin [see *Warnings and Precautions (5.6)*].

Drug Interactions: Patients should be cautioned about the use of other medications, including ganciclovir, interferon alfa, and ribavirin, which may exacerbate the toxicity of zidovudine [see *Drug Interactions (7.3)*].

Redistribution/Accumulation of Body Fat: Patients should be informed that redistribution or accumulation of body fat may occur in patients receiving antiretroviral therapy and that the cause and long-term health effects of these conditions are not known at this time [see *Warnings and Precautions (5.9)*].

Information About HIV-1 Infection: COMBIVIR is not a cure for HIV-1 infection and patients may continue to experience illnesses associated with HIV-1 infection, including opportunistic infections. Patients should remain under the care of a physician when using COMBIVIR.

Patients should be advised to avoid doing things that can spread HIV-1 infection to others.

- **Do not share needles or other injection equipment.**
- **Do not share personal items that can have blood or body fluids on them, like toothbrushes and razor blades.**
- **Do not have any kind of sex without protection.** Always practice safe sex by using a latex or polyurethane condom or other barrier method to lower the chance of sexual contact with semen, vaginal secretions, or blood.
- **Do not breastfeed.** Lamivudine and zidovudine are excreted in human breast milk. Mothers with HIV-1 should not breastfeed because HIV-1 can be passed to the baby in the breast milk.

Patients should be informed to take all HIV medications exactly as prescribed.

EPIVIR, RETROVIR, EPZICOM, and TRIZIVIR are registered trademarks of ViiV Healthcare.

The other brands listed are trademarks of their respective owners and are not trademarks of ViiV Healthcare. The makers of these brands are not affiliated with and do not endorse ViiV Healthcare or its products.

Manufactured for:

ViiV Healthcare
Research Triangle Park, NC 27709

by GlaxoSmithKline

Research Triangle Park, NC 27709

Lamivudine is manufactured under agreement from
Shire Pharmaceuticals Group plc
Basingstoke, UK

©2013, ViiV Healthcare. All rights reserved.

CMB: 5PI

PRINCIPAL DISPLAY PANEL

NDC 49702-202-18

COMBIVIR[®]

(lamivudine and zidovudine)

Tablets 150 mg/300 mg

R_x only

60 Tablets

Each tablet contains 150 mg of lamivudine and 300 mg of zidovudine.

Store between 2° and 30°C (36° and 86°F).

See prescribing information for dosage information.

Do not use if printed safety seal under cap is broken or missing.

Manufactured for:

ViiV Healthcare
Research Triangle Park, NC 27709

by:

GlaxoSmithKline
Research Triangle Park, NC 27709

Lamivudine is manufactured under agreement from
Shire Pharmaceuticals Group plc
Basingstoke, UK

Made in UK

1000000082963 Rev. 8/10



COMBIVIR

lamivudine and zidovudine tablet, film coated

Product Information

Product Type	HUMAN PRESCRIPTION DRUG LABEL	Item Code (Source)	NDC:49702-202
Route of Administration	ORAL	DEA Schedule	

Active Ingredient/Active Moiety

Ingredient Name	Basis of Strength	Strength
LAMIVUDINE (LAMIVUDINE)	LAMIVUDINE	150 mg
ZIDO VUDINE (ZIDO VUDINE)	ZIDO VUDINE	300 mg

Inactive Ingredients

Ingredient Name	Strength
SILICON DIO XIDE	
HYPROMELLOSES	
MAGNESIUM STEARATE	
CELLULOSE, MICROCRYSTALLINE	
POLYETHYLENE GLYCOLS	
POLYSORBATE 80	
SODIUM STARCH GLYCOLATE TYPE A POTATO	
TITANIUM DIO XIDE	

Product Characteristics

Color	WHITE	Score	2 pieces
--------------	-------	--------------	----------

Shape	OVAL (modified-capsule-shaped tablets)	Size	17mm
Flavor		Imprint Code	GXFC3
Contains			

Packaging

#	Item Code	Package Description	Marketing Start Date	Marketing End Date
1	NDC:49702-202-18	60 in 1 BOTTLE; Combination Product Type = C112160	10/19/2010	
2	NDC:49702-202-29	120 in 1 DOSE PACK; Combination Product Type = C112160	10/19/2010	

Marketing Information

Marketing Category	Application Number or Monograph Citation	Marketing Start Date	Marketing End Date
NDA	NDA020857	10/19/2010	

Labeler - ViiV Healthcare Company (027295585)

Revised: 1/2013

ViiV Healthcare Company