

TUSSIN DM- dextromethorphan hydrobromide and guaifenesin suspension

CVS Pharmacy

Disclaimer: Most OTC drugs are not reviewed and approved by FDA, however they may be marketed if they comply with applicable regulations and policies. FDA has not evaluated whether this product complies.

CVS Pharmacy, Inc. Tus sin DM Drug Facts

Active ingredients (in each 10 mL)

Dextromethorphan HBr, USP 20 mg

Guaifenesin, USP 400 mg

Purposes

Cough suppressant

Expectorant

Uses

- temporarily relieves cough due to minor throat and bronchial irritation as may occur with a cold
- helps loosen phlegm (mucus) and thin bronchial secretions to drain bronchial tubes

Warnings

Do not use

if you are now taking a prescription monoamine oxidase inhibitor (MAOI) (certain drugs for depression, psychiatric, or emotional conditions, or Parkinson's disease), or for 2 weeks after stopping the MAOI drug. If you do not know if your prescription drug contains an MAOI, ask a doctor or pharmacist before taking this product.

Ask a doctor before use if you have

- cough that occurs with too much phlegm (mucus)
- cough that lasts or is chronic such as occurs with smoking, asthma, chronic bronchitis, or emphysema

Stop use and ask a doctor if

cough lasts for more than 7 days, comes back, or occurs with fever, rash, or persistent headache. A persistent cough may be a sign of a serious condition.

If pregnant or breast-feeding,

ask a health professional before use.

Keep out of reach of children.

In case of overdose, get medical help or contact a Poison Control Center right away. (1-800-222-1222)

Directions

- shake well before using
- do not take more than 6 doses in any 24-hour period
- measure only with dosing cup provided
- keep dosing cup with product
- mL = milliliter
- this adult product is not intended for use in children under 12 years of age

age	dose
adults and children 12 years and over	10 mL every 4 hours
children under 12 years	do not use

Other information

- each 10 mL contains: sodium 7 mg
- store at 20-25°C (68-77°F)

Inactive ingredients

anhydrous citric acid, D&C red no. 33, FD&C red no. 40, flavor, glycerin, high fructose corn syrup, menthol, microcrystalline cellulose and carboxymethylcellulose sodium, polyethylene glycol, povidone, propylene glycol, purified water, saccharin sodium, sodium benzoate, sorbitol solution, xanthan gum

Questions or comments?

1-800-719-9260

Package/Label Principal Display Panel

Compare to the active ingredients in Robitussin® Maximum Strength Cough + Chest Congestion DM

Maximum Strength

For Mucus Relief

TUSSIN DM

ADULT COUGH & CHEST CONGESTION

COUGH SUPPRESSANT (DEXTROMETHORPHAN HBr)

EXPECTORANT (GUAIFENESIN)

Relieves:

Cough

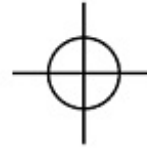
Chest congestion/mucus

Alcohol free

NON-DROWSY

For ages 12 & over

4 FL OZ (118 mL)



CVS
pharmacy™

NDC 59779-557-26

Compare to the active ingredients in Robitussin® Maximum Strength Cough + Chest Congestion DM*

**Maximum Strength
For Mucus Relief**

**TUSSIN
DM**

**ADULT COUGH &
CHEST CONGESTION**

COUGH SUPPRESSANT
(DEXTROMETHORPHAN HBr)
EXPECTORANT (GUAIFENESIN)

Relieves:

- **Cough**
- **Chest congestion/
mucus**

Alcohol free

NON-DROWSY

For ages 12 & over

4 FL OZ (118 mL)

CVS
pharmacy™

**Maximum Strength
For Mucus Relief**

TUSSIN DM

ADULT COUGH & CHEST CONGESTION

COUGH SUPPRESSANT
(DEXTROMETHORPHAN HBr)
EXPECTORANT (GUAIFENESIN)

**Choose the correct Tussin formula
for your symptoms**

TUSSIN

Chest congestion with dry cough

- Loosens chest congestion to help coughs clear chest.

TUSSIN - DM

Frequent coughs & chest congestion

- Controls and suppresses coughing.
- Loosens and relieves chest congestion/mucus.

TUSSIN - CF

Nasal stuffiness & frequent coughs & chest congestion

- Clears nasal passages to restore freer breathing through the nose.
- Controls and suppresses coughing.
- Relieves chest congestion/mucus.

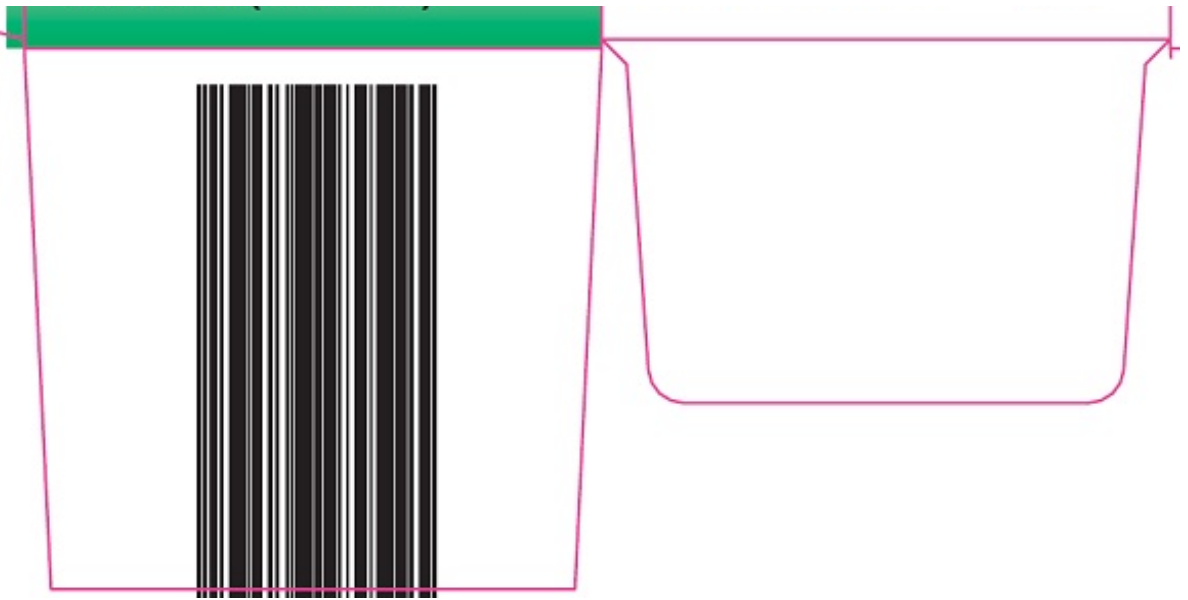
LONG-ACTING TUSSIN

Frequent coughs

- Controls coughs 6-8 hours.

Dosage cup provided





ADULT COUGH &
CHEST CONGESTION

DM TUSSIN

Maximum Strength
For Mucus Relief

Compare to the
active ingredients in
Robitussin® Maximum Strength
Cough + Chest Congestion DM*

CVS
pharmacy

Drug Facts

Active ingredients (in each 10 mL)	Purposes
Dextromethorphan HBr, USP 20 mg.....	Cough suppressant
Guaifenesin, USP 400 mg.....	Expectorant

Uses

- temporarily relieves cough due to minor throat and bronchial irritation as may occur with a cold
- helps loosen phlegm (mucus) and thin bronchial secretions to drain bronchial tubes

Warnings

Do not use if you are now taking a prescription monoamine oxidase inhibitor (MAOI) (certain drugs for depression, psychiatric, or emotional conditions, or Parkinson's disease), or for 2 weeks after stopping the MAOI drug. If you do not know if your prescription drug contains an MAOI, ask a doctor or pharmacist before taking this product.

Ask a doctor before use if you have

- cough that occurs with too much phlegm (mucus)
- cough that lasts or is chronic such as occurs with smoking, asthma, chronic bronchitis, or emphysema

Stop use and ask a doctor if cough lasts for more than 7 days, comes back, or is accompanied by fever, rash, or persistent headache. A persistent cough may be a sign of a serious condition.

If pregnant or breast-feeding, ask a health professional before use.

Keep out of reach of children. In case of overdose, get medical help or contact a Poison Control Center right away. (1-800-222-1222)

Directions

- shake well before using
- do not take more than 6 doses in any 24-hour period
- measure only with dosing cup provided
- keep dosing cup with product
- mL = milliliter
- this adult product is not intended for use in children under 12 years of age

Drug Facts (continued)

age	dose
adults and children 12 years and over	10 mL every 4 hours
children under 12 years	do not use

Other information

- each 10 mL contains: sodium 7 mg
- store at 20-25°C (68-77°F)

Inactive ingredients anhydrous citric acid, D&C red no. 33, FD&C red no. 40, flavor, glycerin, high fructose corn syrup, menthol, microcrystalline cellulose and carboxymethylcellulose sodium, polyethylene glycol, povidone, propylene glycol, purified water, saccharin sodium, sodium benzoate, sorbitol solution, xanthan gum

Questions or comments?

1-800-719-9260

DO NOT USE IF PRINTED NECKBAND IS BROKEN OR MISSING

*This product is not manufactured or distributed by Pfizer, distributor of Robitussin® Maximum Strength Cough + Chest Congestion DM.

Distributed by: CVS Pharmacy, Inc.
One CVS Drive, Woonsocket, RI 02895
© 2014 CVS/pharmacy
CVS.com® 1-800-SHOP CVS
V-16467

 **CVS Quality**
Money Back Guarantee


PLEASE RECYCLE

PARENTS:

Learn about teen medicine abuse

www.StopMedicineAbuse.org



TUSSIN DM

dextromethorphan hbr, guaifenesin suspension

Product Information

Product Type	HUMAN OTC DRUG LABEL	Item Code (Source)	NDC:59779-557
Route of Administration	ORAL	DEA Schedule	

Active Ingredient/Active Moiety

Ingredient Name	Basis of Strength	Strength
DEXTROMETHORPHAN HYDROBROMIDE (DEXTROMETHORPHAN)	DEXTROMETHORPHAN HYDROBROMIDE	20 mg in 10 mL
GUAIFENESIN (GUAIFENESIN)	GUAIFENESIN	400 mg in 10 mL

Inactive Ingredients

Ingredient Name	Strength
ANHYDROUS CITRIC ACID	
CARBOXYMETHYLCELLULOSE SODIUM	
D&C RED NO. 33	
FD&C RED NO. 40	
GLYCERIN	
HIGH FRUCTOSE CORN SYRUP	
MENTHOL	
CELLULOSE, MICROCRYSTALLINE	
POLYETHYLENE GLYCOLS	
POVIDONES	
PROPYLENE GLYCOL	
WATER	
SACCHARIN SODIUM	
SODIUM BENZOATE	
SORBITOL	
XANTHAN GUM	

Product Characteristics

Color	RED (Opaque)	Score	
Shape		Size	
Flavor	CHERRY (Menthol)	Imprint Code	
Contains			

Packaging

#	Item Code	Package Description	Marketing Start Date	Marketing End Date
1	NDC:59779-557-26	1 in 1 CARTON		
1		118 mL in 1 BOTTLE		
2	NDC:59779-557-34	1 in 1 CARTON		
2		237 mL in 1 BOTTLE		

Marketing Information

Marketing Category	Application Number or Monograph Citation	Marketing Start Date	Marketing End Date
OTC monograph final	part341	07/28/2010	

Labeler - CVS Pharmacy (062312574)

Revised: 10/2014

CVS Pharmacy