

**LEBODY FIT COOL BODY MASSAGER- ilex paraguariensis leaf cream**  
**GTG Wellness Co., Ltd.**

*Disclaimer: This drug has not been found by FDA to be safe and effective, and this labeling has not been approved by FDA. For further information about unapproved drugs, [click here](#).*

-----

**ACTIVE INGREDIENT**

Active ingredients: ILEX PARAGUARIENSIS LEAF EXTRACT 0.1%

**INACTIVE INGREDIENT**

Inactive ingredients: Water, PEG-8, Alcohol, 1,2-Hexanediol, PEG-60 Hydrogenated Castor Oil, Erythritol, Glycyrrhiza Glabra (Licorice) Root Extract, Sesamum Indicum (Sesame) Seed Extract, Angelica Gigas Root Extract, Morus Alba Bark Extract, Phellinus Linteus Extract, Paeonia Lactiflora Root Extract, Polygonum Multiflorum Root Extract, Scutellaria Baicalensis Root Extract, Sophora Flavescens Root Extract, Cimicifuga Racemosa Root Extract, Chenopodium Quinoa Seed Extract, Ficus Carica (Fig) Fruit Extract, Punica Granatum Fruit Extract, Morus Alba Fruit Extract, Ginkgo Biloba Nut Extract, Sodium Hyaluronate, Methyl Diisopropyl Propionamide, Menthol, Ammonium Acryloyldimethyltaurate/VP Copolymer, Carbomer, Tromethamine, Eucalyptus Globulus Leaf Oil, Citrus Limon (Lemon) Peel Oil, Cymbopogon Schoenanthus Oil, Sodium Guaiazulene Sulfonate, Adenosine, Ethylhexylglycerin, Butylene Glycol

**PURPOSE**

Purpose: Skin Conditioning

**WARNINGS**

Warnings: 1) When you have symptoms such as red spots, swelling, itching or side effect during use of the cosmetic or after exposing direct sunlight, you should consult a specialist. 2) Do not use in wounded areas. 3) Precautions for storage and handling. A) Keep out the reaching of children. B) Keep away from the direct sunlight.

**KEEP OUT OF REACH OF CHILDREN**

KEEP OUT OF REACH OF CHILDREN

**Uses**

Uses:

Cooling Sensation: it makes massage effect with cooling sensation.

Moisturizing Care: Provides soothing and moisturizing for tired skin.

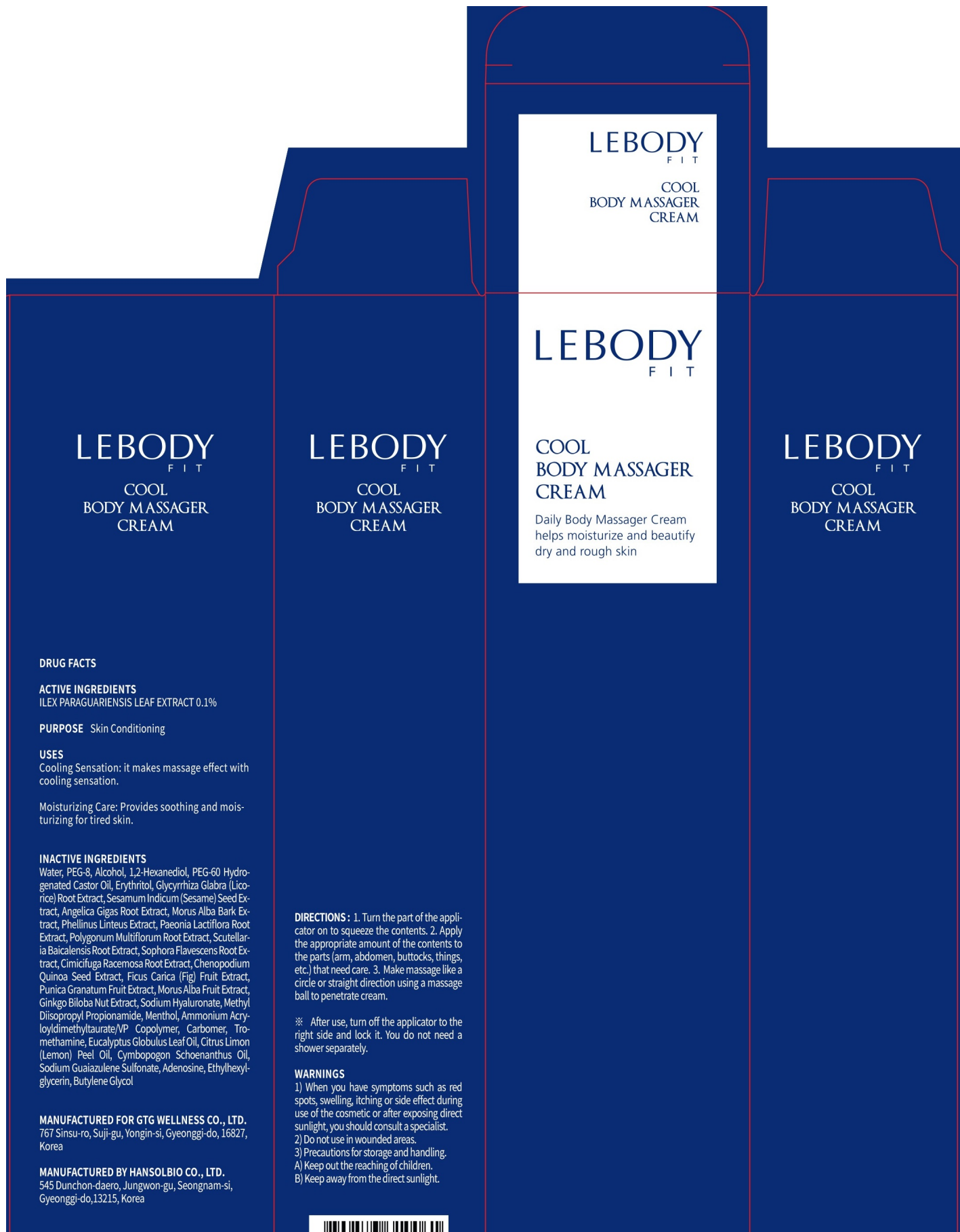
**Directions**

Directions:

1. Turn the part of the applicator on to squeeze the contents. 2. Apply the appropriate amount of the contents to the parts (arm, abdomen, buttocks, things, etc.) that need care. 3. Make massage like a circle or straight direction using a massage ball to penetrate cream.

\* After use, turn off the applicator to the right side and lock it. You do not need a shower separately.

## PACKAGE LABEL.PRINCIPAL DISPLAY PANEL





LEBODY FIT COOL BODY MASSAGER

ilex paraguariensis leaf cream

Product Information			
Product Type	HUMAN OTC DRUG	Item Code (Source)	NDC:71080-0005
Route of Administration	TOPICAL		

Active Ingredient/Active Moiety		
Ingredient Name		Strength
ILEX PARAGUARIENSIS LEAF (UNII: 1Q953B4O4F) (ILEX PARAGUARIENSIS LEAF - UNII:1Q953B4O4F)		0.13 g in 130 mL

Inactive Ingredients	
Ingredient Name	Strength
Water (UNII: 059QF0KO0R)	
Alcohol (UNII: 3K9958V90M)	

Packaging				
#	Item Code	Package Description	Marketing Start Date	Marketing End Date
1	NDC:71080-0005-2	1 in 1 PACKAGE	01/02/2018	
1	NDC:71080-0005-1	130 mL in 1 TUBE; Type 0: Not a Combination Product		

Marketing Information			
Marketing Category	Application Number or Monograph Citation	Marketing Start Date	Marketing End Date
unapproved drug other		01/02/2018	

Labeler - GTG Wellness Co., Ltd. (689458057)

Registrant - GTG Wellness Co., Ltd. (689458057)

Establishment			
Name	Address	ID/FEI	Business Operations
Hansol Bio Co.,Ltd		694046931	manufacture(71080-0005)

Revised: 2/2018

GTG Wellness Co., Ltd.