

LIGHTENING SERUM- cyclomethicone 5 cream

Lange SAS

Disclaimer: This drug has not been found by FDA to be safe and effective, and this labeling has not been approved by FDA. For further information about unapproved drugs, [click here](#).

KEY ACTIVE INGREDIENTS

Seaweed, Licorice Root and Pearl Protein Extracts

LIGHTENING SERUM

Coup d'eclat with Seaweed extract and Pearl Protein

Keep out of reach of children.

LIGHTENING SERUM LANGE

Coup d'eclat Serum is an intensive booster treatment, highly concentrated with whitening Complex. This soft and melting light-gel feel ultra-modern formula will help to: correct skin pigmentation to create a more even appearance, improve skin tone and clarity, creating a more radiant complexion, protect, revitalize, and sublime skin, reinforce action from other LANGE Lightening Products.

WARNING!

Avoid contact with the eyes; avoid or afford protecting from UV whilst using products containing AHA because of the suggestion of susceptibility to increased damage from UV.

20 ml

0.68 FL. OZ

WATER

PEG-8

DICAPRYLYL ETHER

CYCLOPENTASILOXANE

MANNITOL

SODIUM POLYACRYLATE

PROPYLENE GLYCOL

GLYCERIN

PHENOXYETHANOL

C30-45 ALKYL CETEARYL DIMETHICONE CROSSPOLYMER

SODIUM PCA

PROPYLPARABEN

SODIUM GLUCONATE

DISODIUM EDTA

METHYLPARABEN

MAGNESIUM ASCORBYL PHOSPHATE

o-CYMEN-5-OL

ETHYLPARABEN

CITRIC ACID

SODIUM CITRATE

TOCOPHEROL

CITRUS NOBILIS (MANDARIN ORANGE) FRUIT EXTRACT

BUTYLENE GLYCOL

WALTHERIA INDICA LEAF EXTRACT

GLYCYRRHETINIC ACID

BAMBUSA VULGARIS LEAF/STEM EXTRACT

ASCOPHYLLUM NODOSUM EXTRACT
DEXTRIN
FERULIC ACID
GLYCYRRHIZA GLABRA (LICORICE) ROOT EXTRACT
MALIC ACID
HYDROLYZED CONCHIOLIN PROTEIN
TARTARIC ACID
FREESIA ALBA FLOWER EXTRACT
GARDENIA TAHITENSIS FLOWER EXTRACT
HIBISCUS SABDARIFFA FLOWER EXTRACT
LILIUM CANDIDUM FLOWER EXTRACT

Pantone 425 C
 Pantone 2572 C
 Pantone 424 C
 Reserve
 Mat silver hot stamping
 die cut
 Spot UV

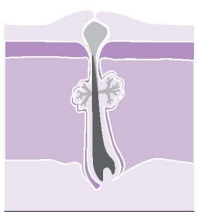
Size: 76mm(w) x170mm(h) x 53mm(d)

LES TROIS PRINCIPALES CAUSES DE L'ACNÉ

- Une hypersécrétion de sébum par les glandes sébacées due à un dysfonctionnement hormonal typique de l'adolescent.
- Une hyperkératinisation (un important épaissement de la peau) qui entraîne une compression du follicule pileux, compressant les débuts de boutons et entraînant une inflammation et une infection plus rapide.
- Une infection du canal folliculaire par la prolifération des bactéries.

Demandez le KIT ANTI-ACNÉ LANGÉ

Peau Acnéique
Acne Prone Skin



LANGÉ
PARIS

LOTION TONIQUE PRÉPARATRICE
Au Zinc PCA régulateur de Sébum,
Acide Salicylique Anti-microbien et Ortie

PREPARING TONIC LOTION
With Sebum-Regulator Zinc PCA,
Anti-Microbial Salicylic Acid and Stinging Nettle

e 180 ml
6.08 FLOZ

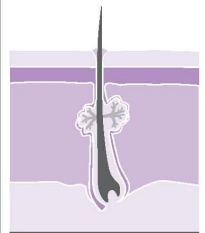


WHAT ARE THE THREE MAIN CAUSES OF ACNE ?

- An excess of sebum secretion by sebaceous gland due to hormonal disorders on most of the teenagers.
- A hyperkeratinisation which causes a compression of the hair follicle which in turn promotes inflammatory.
- The proliferation of bacteria in the hair follicle which become infected.

See **LANGÉ YOUNG SKIN STARTER KIT**

Peau Saine
Healthy Skin



LOTION TONIQUE PRÉPARATRICE LANGÉ

La Lotion Tonique LANGÉ va aider à la diminution de la taille des pores grâce à ses actifs astringents, aider à réguler la sécrétion de sébum avec ses extraits de Zinc PCA et limiter la prolifération bactérienne avec ses extraits d'Acide Salicylique. Son extrait d'Ortie est antiseptique et anti-inflammatoire. Pour une peau plus douce et un teint plus lumineux, la Lotion:

- Elimine les Cellules mortes,
- Préviens la formation des points noirs,
- Absorbe l'excès de sébum.

PREPARING TONIC LOTION LANGÉ

LANGÉ Tonic Lotion will help to minimise pore size with its astringent ingredients and boost sebum regulation with its Zinc PCA extracts. Its Salicylic Acid limits bacterial growth and Stinging Nettle extract is Antiseptic & Anti-inflammatory. Skin is smoother and complexion is brighter with Tonic Lotion main actions:

- Clears away dead cells,
- Prevents blackheads formation,
- Absorbs the excess of sebum.

PRINCIPAUX INGRÉDIENTS ACTIFS / KEY ACTIVE INGREDIENTS
Zinc PCA, Acide Salicylique, Extraits de Fleur d'Inis et d'Ortie
Zinc PCA, Salicylic Acid, Iris Flower Extract, Stinging Nettle

LANGÉ, the essence of nature™

INGRÉDIENTS: AQUA (WATER), PROPYLENE GLYCOL, SODIUM LACTATE, ZINC PCA, LECITHIN, DIMICA, INULIN, BOTANICAL EXTRACTS, HYDROXYACID, SALICYLIC ACID, ALANTOIN, SODIUM METHYLMERCAPTOPROPIONATE, PHENOLETHANOL, TETRASODIUM EDTA, METHYLPARABEN, ETHYLPARABEN, METHYLCYCLOPENTASIACONOL, ACETYLISOSORBACANONE, BENZYL ALCOHOL, PROPANEDIOL, BUTYLPARABEN, SOLUBLE VITAMIN B5, PANTOTHENIC ACID, PANTAM PROPANEDIOL, C10-18 ALCOHOL

LANGÉ™
4, PLACE DE LA DÉFENSE
F 92874 PARIS LA DÉFENSE
DIST. US NY 10018
www.lange.fr
MADE IN FRANCE

عسول لبقولمة حب اللداب

PRODUITS de BEAUTÉ aux PLANTES

ASSAINISSANT

CLEARING

BOTANICAL BEAUTY PRODUCTS

Peaux Acnéiques

Acne Prone Skin



only by dealers authorized by L A N G É™
This product may be sold
que par les dépositaires agréés L A N G É™
Ce produit ne peut être vendu

IMPORTANT
لا تقبلوا هذا المنتج إلا من قبل الموزعين المصرح بهم فقط
This product is not to be sold
This product is not to be sold
This product is not to be sold

LIGHTENING SERUM

dicaprylyl ether cream

Product Information

Product Type	HUMAN OTC DRUG LABEL	Item Code (Source)	NDC:51830-022
Route of Administration	TOPICAL	DEA Schedule	

Active Ingredient/Active Moiety

Ingredient Name	Basis of Strength	Strength
CYCLOMETHICONE 5 (CYCLOMETHICONE 5)	CYCLOMETHICONE 5	0.35 mg in 20 mg

Inactive Ingredients

Ingredient Name	Strength
WATER	
POLYETHYLENE GLYCOL 400	
MANNITOL	
SODIUM POLYACRYLATE (2500000 MW)	
DICAPRYLYL ETHER	
PROPYLENE GLYCOL	
GLYCERIN	
PHENOXYETHANOL	
SODIUM PYRROLIDONE CARBOXYLATE	
PROPYLPARABEN	
SODIUM GLUCONATE	
EDETATE DISODIUM	
METHYLPARABEN	
MAGNESIUM ASCORBYL PHOSPHATE	
O-CYMEN-5-OL	
ETHYLPARABEN	
CITRIC ACID MONOHYDRATE	
SODIUM CITRATE	
TOCOPHEROL	
TANGERINE	
BUTYLENE GLYCOL	
WALTHERIA INDICA LEAF	
ENOXOLONE	
BAMBUSA VULGARIS TOP	
ASCOPHYLLUM NODOSUM	
ICODextrin	
FERULIC ACID	
GLYCYRRHIZA GLABRA	
MALIC ACID	
TARTARIC ACID	
FREESIA ALBA FLOWER	
GARDENIA TAITENSIS FLOWER	
HIBISCUS SABDARIFFA FLOWER	
LILIUM CANDIDUM FLOWER	

Packaging

#	Item Code	Package Description	Marketing Start Date	Marketing End Date
1	NDC:51830-022-02	20 mg in 1 BOX		

Marketing Information

Marketing Category	Application Number or Monograph Citation	Marketing Start Date	Marketing End Date
unapproved drug other		07/18/2012	

Labeler - Lange SAS (275956105)**Establishment**

Name	Address	ID/FEI	Business Operations
Lange SAS		275956105	manufacture(51830-022)

Revised: 2/2013

Lange SAS