

TRAUMACARE - arnica montana capsule
Hahnemann Laboratories, Inc. dba Alpine Pharmaceuticals

Disclaimer: This homeopathic product has not been evaluated by the Food and Drug Administration for safety or efficacy. FDA is not aware of scientific evidence to support homeopathy as effective.

Active Ingredients

Active Ingredients:

TraumaCare 01 500mg Arnica Montana 1M, TraumaCare 02 500mg Arnica Montana 12C

Purpose

Speeds recovery from Accidents, Sports Injuries, and Surgery

- fractures and sprains
- muscle pulls
- facial injuries

Reduces pain, bruising, and swelling after major trauma

Keep Out of Reach of Children

Keep this and all medication out of the reach of children.

Uses

Reduces pain, bruising, and swelling after major trauma.

TraumaCare is a single complete dosage regimen of Homeopathic Arnica used to speed healing of soft tissue damaged by a major trauma such as an accident, surgery or sports injury. Clinical research has shown patients taking the TraumaCare regimen recover (their bruises and swelling go away) in as little as half the time of patients taking a placebo.

Warnings

Warnings:

If you are pregnant or nursing, consult a health professional before use. For children under 6 years old, see a doctor.

Drug Interactions

Drug Interactions: Do not take together with Talwin tm or Talwin NX tm

Directions

Directions

Adults and children 6 years and older. Take one capsule every 8 hours starting as soon as possible after accident, injury, or surgery. For a planned surgery, take one capsule 1-12 hours prior to surgery, then every 8 hours. Do not eat or drink anything for 15 minutes before and after taking TraumaCare. If symptoms persist see your doctor.

Additional Information About Product

What is Arnica?

Homeopathic Arnica Montana - also known simply as "Arnica" - has been used for centuries to reduce the uncomfortable swelling and bruising associated with a physical trauma. Prepared from a daisy-like plant native to the Swiss Alps, the herb is toxic; conversely, the resulting homeopathic medication is not, due to the small doses of Arnica used in Homeopathy.

What is TraumaCare?

TraumaCare is a controlled dosage regimen combining prescription-strength and low-potency Homeopathic Arnica Montana. Clinically proven, TraumaCare goes beyond treating pain - it speeds healing. Recommended by doctors, TraumaCare has demonstrated a reduction in the amount of visible bruising in patients within the first day and even more dramatically one week later.

What is a Major Trauma?

Major physical traumas result in broken or crushed blood vessels bleeding into injured muscle and/or connective tissue. TraumaCare is proven in research studies to speed the body's natural response to injury. The body's healing process is to re-establish normal blood flow, re-build the injured tissue, and remove the damaged, torn, crushed, or cut muscle fibers and connective tissue.

When is TraumaCare effective?

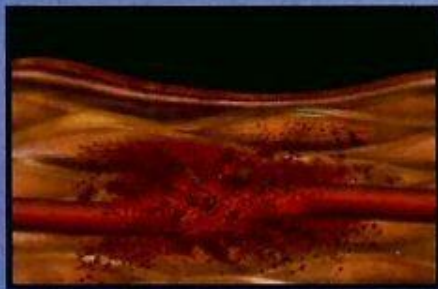
Specifically designed to speed recovery from a major physical trauma, TraumaCare is generally considered too strong for a minor bump or bruise. A "major trauma" is an injury which causes disruption to your normal routine, taking several days or weeks to heal on its own.

Trust your recovery to the Arnica Experts!

TraumaCare TM



Healthy muscle tissue



Crushed muscle tissue



Surgically-cut muscle tissue

What is a Major Trauma?

Major physical traumas result in broken or crushed blood vessels bleeding into injured muscle and/or connective tissue. TraumaCare is proven in research studies to speed the body's natural response to injury. The body's healing process is to re-establish normal blood flow, re-build the injured tissue, and remove the damaged, torn, crushed, or cut muscle fibers and connective tissue.

When is TraumaCare effective?

Specifically designed to speed recovery from a major physical trauma, TraumaCare is generally considered too strong for a minor bump or bruise. A "major trauma" is an injury which causes disruption to your normal routine, taking several days or weeks to heal on its own.

***Trust your recovery to the
Arnica Experts!***

TraumaCare™

Inactive Ingredients

Inactive Ingredients : Sucrose 400mg, Lactose 100 mg, Capsules contain Hypromellose, Red Iron Oxide, Titanium Dioxide

Package Label

TraumaCare TM Reduces pain, bruising, and major swelling after major trauma

Prescription Strength Homeopathic Arnica

Speeds recovery from Accidents, Sports Injuries, and Surgery

Speeds recovery from major traumas:

- fractures and sprains

- muscle pulls
- facial injuries
- knee injuries
- shoulder injuries
- orthopedic surgery
- oral surgery
- back surgery
- plastic surgery
- general surgery

Accidents:

- Car accidents
- bike accidents

Plus sports injuries:

- Basketball
- Baseball
- Football
- Hockey
- Tennis
- Soccer

THIS PRODUCT IS SAFETY SEALED. THE BOX IS SEALED AND THE CAPSULES ARE INDIVIDUALLY BLISTER SEALED.DO NOT USE IF SEALS OR BLISTERS ARE BROKEN.

Printed with soy based inks by a Forest Stewardship Council Certified Printer.

Developed and distributed by Alpine Pharmaceuticals, San Rafael, CA 94901 a wholly owned subsidiary of Hahnemann Laboratories, Inc. All rights reserved.

Lot:TCQ221 Use before Feb 2012 NDC 63545-517-01

A Product of Alpine Pharmaceuticals

Questions or Comments call 888-746-4542 email info@alpinepharma.com or visit online at www.alpinepharma.com

ALL NATURAL 12 capsules For Adults and Children 6 years and older

TraumaCare™

Reduces pain, bruising, and swelling

THIS PRODUCT IS SAFETY SEALED; THE BOX IS SEALED AND THE CAPSULES ARE INDIVIDUALLY BLISTER SEALED. DO NOT USE IF SEALS OR BLISTERS ARE BROKEN.

Printed with soy based inks by a Forest Stewardship Council Certified Printer.

Prescription Strength

Homeopathic Arnica

TraumaCare™

Reduces pain, bruising, and swelling after major trauma

Speeds recovery from Accidents, Sports Injuries, and Surgery

- fractures & sprains
- muscle pulls
- facial injuries

12 capsules

ALL NATURAL



TraumaCare™

Reduces pain, bruising, and swelling

Directions
Adults and children 6 years and older. Take one capsule every 8 hours starting as soon as possible after accident, injury, or surgery. For a planned surgery, take one capsule 1-12 hours prior to surgery, then every 8 hours. Do not eat or drink anything for 15 minutes before and after taking TraumaCare. If symptoms persist see your doctor.

A Product of
Alpine Pharmaceuticals

Questions or Comments call 888-746-4542.
email info@alpinepharm.com or visit online at www.alpinepharm.com



TraumaCare™

Reduces pain, bruising & swelling

Speeds recovery from major traumas:

- Fractures & sprains
- Facial injuries
- Muscle pulls
- Shoulder injuries
- Knee injuries
- Plastic & Cosmetic Surgery
- Oral Surgery
- Back Surgery
- Orthopedic Surgery
- General Surgery

Accidents:

- Car accidents
- Bike accidents

Plus sports injuries:

- Basketball
- Baseball
- Football
- Hockey
- Tennis
- Soccer

What is Arnica?

Homeopathic Arnica Montana – also known simply as “Arnica” – has been used for centuries to reduce the uncomfortable swelling and bruising associated with a physical trauma. Prepared from a daisy-like plant native to the Swiss Alps, the herb is toxic; conversely, the resulting homeopathic medication is not, due to the small doses of Arnica used in Homeopathy.

What is TraumaCare?

TraumaCare is a controlled dosage regimen combining prescription-strength and low-potency Homeopathic Arnica Montana. Clinically proven, TraumaCare goes beyond treating pain – it speeds healing. Recommended by doctors, TraumaCare has demonstrated a reduction in the amount of visible bruising in patients within the first day and even more dramatically one week later.

TraumaCare™
Reduces pain, bruising,
and swelling

Drug Interactions: Do not take together with Tolwin™ or Tolwin NXR™.

Developed and distributed by **Alphie Pharmaceuticals**, San Rafael, CA 94901,
a wholly owned subsidiary of Hahnemann Labs, Inc. All rights reserved.

Lot: TCO221 Use before Feb 2012 NDC - 63545-0517-1

Open flap to learn more

TraumaCare™

For Adults and Children
6 years and older

**Reduces pain, bruising & swelling
after major trauma**

TraumaCare is a single complete dosage regimen of Homeopathic Arnica used to speed healing of soft tissue damaged by a major trauma such as an accident, surgery or sports injury. Clinical research has shown patients taking the TraumaCare regimen recover (their bruises and swelling go away) in as little as half the time of patients taking a placebo.

Dosage:

Take as soon after trauma as possible, one capsule every 8 hours starting with Dose 1. For a planned surgery take first dose 1-12 hours prior to surgery, then one dose every 8 hours after.

Active Ingredients:

TraumaCare 01 500mg Arnica Montana 1M, TraumaCare 02 500mg Arnica Montana 12C

Inactive Ingredients:

Sucrose 400mg, Lactose 100mg. Capsules contain Hypromellose, Red Iron Oxide, Titanium Dioxide

Warnings:

If you are pregnant or nursing, consult a health professional before use. Keep this and all medication out of the reach of children. For children under 6 years old, see a doctor.

A Product of

Alpine Pharmaceuticals

**Speeds recovery from
Accidents, Sports Injuries,
and Surgery**

- **fractures & sprains**
- **facial injuries**
- **knee injuries**
- **shoulder injuries**
- **muscle pulls**
- **orthopedic surgery**
- **oral surgery**
- **back surgery**
- **plastic surgery**
- **general surgery**

TRAUMACARE

arnica montana capsule

Product Information

Product Type	HUMAN OTC DRUG LABEL	Item Code (Source)	NDC:63545-517
Route of Administration	ORAL	DEA Schedule	

Active Ingredient/Active Moiety				
Ingredient Name		Basis of Strength	Strength	
ARNICA MONTANA (ARNICA MONTANA)		ARNICA MONTANA	1 [hp_M]	
Inactive Ingredients				
Ingredient Name		Strength		
SUCROSE				
LACTOSE				
HYPROMELLOSES				
FERRIC OXIDE RED				
TITANIUM DIOXIDE				
Product Characteristics				
Color	orange (orange/peach)	Score	no score	
Shape	CAPSULE (capsule)	Size	18mm	
Flavor		Imprint Code	TraumaCare01	
Contains				
Packaging				
#	Item Code	Package Description	Marketing Start Date	Marketing End Date
1	NDC:63545-517-01	12 in 1 BLISTER PACK		
Marketing Information				
Marketing Category	Application Number or Monograph Citation	Marketing Start Date	Marketing End Date	
unapproved homeopathic		06/30/2007		

Labeler - Hahnemann Laboratories, Inc. dba Alpine Pharmaceuticals (147098081)

Registrant - Hahnemann Laboratories, Inc. dba Alpine Pharmaceuticals (147098081)

Establishment

Name	Address	ID/FEI	Business Operations
Hahnemann Laboratories, Inc. dba Alpine Pharmaceuticals		147098081	manufacture(63545-517)

Revised: 1/2012

Hahnemann Laboratories, Inc. dba Alpine Pharmaceuticals