

BENZPHETAMINE HYDROCHLORIDE- benzphetamine hydrochloride tablet
Solco Healthcare US LLC

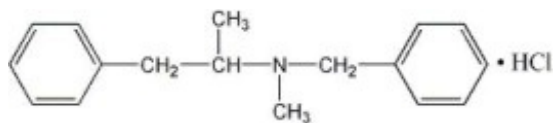
BENZPHETAMINE HYDROCHLORIDE TABLETS, 50 MG

Rx only
Code 1025B00
Rev. 06/11

DESCRIPTION

Benzphetamine hydrochloride tablets contain the anorectic agent benzphetamine hydrochloride. Benzphetamine hydrochloride is a white crystalline powder readily soluble in water and 95% ethanol. The chemical name for benzphetamine hydrochloride is *d*-N, α -Dimethyl-N-(phenylmethyl)-benzeneethanamine hydrochloride and its molecular weight is 275.82.

The structural formula (dextro form) is represented below:



Each tablet for oral administration contains 50 mg of benzphetamine hydrochloride.

In addition, each tablet contains calcium stearate, corn starch, D&C Red #30 Aluminum Lake and sorbitol.

CLINICAL PHARMACOLOGY

Benzphetamine hydrochloride is a sympathomimetic amine with pharmacologic activity similar to the prototype drugs of this class used in obesity, the amphetamines. Actions include central nervous system stimulation and elevation of blood pressure. Tachyphylaxis and tolerance have been demonstrated with all drugs of this class in which these phenomena have been looked for.

Drugs of this class used in obesity are commonly known as “anorectics” or “anorexigenics”. It has not been established, however, that the action of such drugs in treating obesity is primarily one of appetite suppression. Other central nervous system actions, or metabolic effects, may be involved.

Adult obese subjects instructed in dietary management and treated with “anorectic” drugs, lose more weight on the average than those treated with placebo and diet, as determined in relatively short-term clinical trials.

The magnitude of increased weight loss of drug-treated patients over placebo-treated patients is only a fraction of a pound a week. The rate of weight loss is the greatest in the first weeks of therapy for both drug and placebo subjects and tends to decrease in succeeding weeks. The possible origins of the increased weight loss due to the various drug effects are not established. The amount of weight loss associated with the use of an “anorectic” drug varies from trial to trial, and the increased weight loss appears to be related in part to variables other than the drug prescribed, such as the physician-investigator, the population treated, and the diet prescribed. Studies do not permit conclusions as to the relative importance of the drug and non-drug factors on weight loss.

The natural history of obesity is measured in years, whereas the studies cited are restricted to a few weeks duration; thus, the total impact of drug-induced weight loss over that of diet alone must be considered to be clinically limited.

Pharmacokinetic data in humans are not available.

INDICATIONS AND USAGE

Benzphetamine hydrochloride tablets are indicated in the management of exogenous obesity as a short term (a few weeks) adjunct in a regimen of weight reduction based on caloric restriction in patients with an initial body mass index (BMI) of 30 kg/m² or higher who have not responded to appropriate weight reducing regimen (diet and/or exercise) alone. Below is a chart of Body Mass Index (BMI) based on various heights and weights. BMI is calculated by taking the patient's weight, in kilograms (kg), divided by the patient's height, in meters (m), squared. Metric conversions are as follows: pounds ÷ 2.2 = kg; inches × 0.0254 = meters. The limited usefulness of agents of this class (See **CLINICAL PHARMACOLOGY**) should be weighed against possible risks inherent in their use such as those described below.

BODY MASS INDEX (BMI), kg/m²

Weight (pounds)	Height (feet, inches)					
	5'0"	5'3"	5'6"	5'9"	6'0"	6'3"
140	27	25	23	21	19	18
150	29	27	24	22	20	19
160	31	28	26	24	22	20
170	33	30	28	25	23	21
180	35	32	29	27	25	23
190	37	34	31	28	26	24
200	39	36	32	30	27	25
210	41	37	34	31	29	26
220	43	39	36	33	30	28
230	45	41	37	34	31	29
240	47	43	39	36	33	30
250	49	44	40	37	34	31

Benzphetamine hydrochloride tablets are indicated for use as monotherapy only.

CONTRAINDICATIONS

Benzphetamine hydrochloride tablets are contraindicated in patients with advanced arteriosclerosis, symptomatic cardiovascular disease, moderate to severe hypertension, hyperthyroidism, known hypersensitivity or idiosyncrasy to sympathomimetic amines, and glaucoma. Benzphetamine should not be given to patients who are in an agitated state or who have a history of drug abuse.

Hypertensive crises have resulted when sympathomimetic amines have been used concomitantly or within 14 days following use of monoamine oxidase inhibitors. Benzphetamine hydrochloride tablets should not be used concomitantly with other CNS stimulants.

Benzphetamine hydrochloride tablets may cause fetal harm when administered to a pregnant woman. Amphetamines have been shown to be teratogenic and embryotoxic in mammals at high multiples of the human dose. Benzphetamine hydrochloride tablets are contraindicated in women who are or may become pregnant. If this drug is used during pregnancy, or if the patient becomes pregnant while taking this drug, the patient should be apprised of the potential hazard to the fetus.

WARNINGS

Benzphetamine hydrochloride tablets should not be used in combination with other anorectic agents, including prescribed drugs, over-the-counter preparations and herbal products.

In a case-control epidemiological study, the use of anorectic agents was associated with an increased risk of developing pulmonary hypertension, a rare, but often fatal disorder. The use of anorectic agents for longer than three months was associated with a 23-fold increase in the risk of developing pulmonary hypertension. Increased risk of pulmonary hypertension with repeated courses of therapy cannot be excluded. It should be noted that benzphetamine was not specifically studied in this case-control study.

The onset or aggravation of exertional dyspnea, or unexplained symptoms of angina pectoris, syncope, or lower extremity edema suggest the possibility of occurrence of pulmonary hypertension. Under these circumstances, benzphetamine hydrochloride tablets should be immediately discontinued, and the patient should be evaluated for the possible presence of pulmonary hypertension.

Valvular heart disease associated with the use of some anorectic agents such as fenfluramine and dexfenfluramine has been reported. Possible contributing factors include use for extended periods of time, higher than recommended dose, and/or use in combination with other anorectic drugs. However, no cases of this valvulopathy have been reported when benzphetamine has been used alone.

The potential risk of possible serious adverse effects such as valvular heart disease and pulmonary hypertension should be assessed carefully against the potential benefit of weight loss. Baseline cardiac evaluation should be considered to detect pre-existing valvular heart diseases or pulmonary hypertension prior to initiation of benzphetamine treatment. Benzphetamine hydrochloride tablets are not recommended in patients with known heart murmur or valvular heart disease. Echocardiogram during and after treatment could be useful for detecting any valvular disorders which may occur. To limit unwarranted exposure and risks, treatment with benzphetamine hydrochloride tablets should be continued only if the patient has satisfactory weight loss within the first 4 weeks of treatment (i.e., weight loss of at least 4 pounds, or as determined by the physician and patient).

When tolerance to the anorectic effect develops, the recommended dose should not be exceeded in an attempt to increase the effect; rather, the drug should be discontinued.

Benzphetamine hydrochloride tablets are not recommended for severely hypertensive patients or for patients with symptomatic cardiovascular disease including arrhythmias.

Benzphetamine hydrochloride tablets are not recommended for patients who used any anorectic agents within the prior year.

PRECAUTIONS

General

Insulin requirements in diabetes mellitus may be altered in association with use of anorexigenic drugs and the concomitant dietary restrictions.

Psychological disturbances have been reported in patients who receive an anorectic agent together with a restrictive dietary regime.

Caution is to be exercised in prescribing amphetamines for patients with even mild hypertension. The least amount feasible should be prescribed or dispensed at one time in order to minimize the possibility of overdosage.

Information for Patients

Amphetamines may impair the ability of the patient to engage in potentially hazardous activities such as operating machinery or driving a motor vehicle; the patient should therefore be cautioned accordingly.

Drug Interactions

Efficacy of benzphetamine hydrochloride tablets in combination with other anorectic agents has not been studied and the combined use may have the potential for serious cardiac problems.

Hypertensive crises have resulted when sympathomimetic amines have been used concomitantly or within 14 days following use of monoamine oxidase inhibitors. Benzphetamine hydrochloride tablets should not be used concomitantly with other CNS stimulants.

Amphetamines may decrease the hypotensive effect of antihypertensives. Amphetamines may enhance the effects of tricyclic antidepressants.

Urinary alkalinizing agents increase blood levels and decrease excretion of amphetamines. Urinary acidifying agents decrease blood levels and increase excretion of amphetamines.

Carcinogenesis, Mutagenesis, Impairment of Fertility

Animal studies to evaluate the potential for carcinogenesis, mutagenesis or impairment of fertility have not been performed.

Pregnancy

Pregnancy Category X (see **CONTRAINDICATIONS** section).

Nursing Mothers

Amphetamines are excreted in human milk. Mothers taking amphetamines should be advised to refrain from nursing.

Pediatric Use

Safety and effectiveness in pediatric patients have not been established.

Use of benzphetamine hydrochloride is not recommended in individuals under 12 years of age.

Geriatric Use

Clinical studies of benzphetamine hydrochloride tablets did not include sufficient numbers of subjects aged 65 and over to establish safety and efficacy in this population. In general, dose selection for an elderly patient should be cautious, usually starting at the low end of the dosing range, reflecting the greater frequency of decreased hepatic, renal, or cardiac function, and of concomitant disease or other drug therapy.

ADVERSE REACTIONS

The following have been associated with the use of benzphetamine hydrochloride:

Cardiovascular

Palpitation, tachycardia, elevation of blood pressure.

There have been isolated reports of cardiomyopathy and ischemic cardiac events associated with chronic amphetamine use.

Valvular heart disease associated with the use of some anorectic agents such as fenfluramine and dexfenfluramine, both independently and especially when used in combination with other anorectic drugs, have been reported. However, no cases of this valvulopathy have been reported when benzphetamine hydrochloride tablets have been used alone.

CNS

Overstimulation, restlessness, dizziness, insomnia, tremor, sweating, headache; rarely, psychotic episodes at recommended doses; depression following withdrawal of the drug.

Gastrointestinal

Dryness of the mouth, unpleasant taste, nausea, diarrhea, other gastrointestinal disturbances.

Allergic

Urticaria and other allergic reactions involving the skin.

Endocrine

Changes in libido.

DRUG ABUSE AND DEPENDENCE

Benzphetamine is a controlled substance under the Controlled Substance Act by the Drug Enforcement Administration and has been assigned to Schedule III.

Benzphetamine hydrochloride is related chemically and pharmacologically to the amphetamines. Amphetamines and related stimulant drugs have been extensively abused, and the possibility of abuse of benzphetamine hydrochloride tablets should be kept in mind when evaluating the desirability of including a drug as part of a weight reduction program. Abuse of amphetamines and related drugs may be associated with intense psychological dependence and severe social dysfunction. There are reports of patients who have increased the dosage to many times that recommended. Abrupt cessation following prolonged high dosage administration results in extreme fatigue and mental depression; changes are also noted on the sleep EEG. Manifestations of chronic intoxication with anorectic drugs include severe dermatoses, marked insomnia, irritability, hyperactivity, and personality changes. The most severe manifestation of chronic intoxication is psychosis, often clinically indistinguishable from schizophrenia.

OVERDOSAGE

Manifestations of Overdosage

Acute overdosage with amphetamines may result in restlessness, tremor, tachypnea, confusion, assaultiveness and panic states. Fatigue and depression usually follow the central stimulation. Cardiovascular effects include arrhythmias, hypertension or hypotension, and circulatory collapse. Gastrointestinal symptoms include nausea, vomiting, diarrhea, and abdominal cramps. Hyperpyrexia and rhabdomyolysis have been reported and can lead to a number of associated complications. Fatal poisoning is usually preceded by convulsions and coma.

Treatment of Overdosage

(See **WARNINGS**)-Information concerning the effects of overdosage with benzphetamine hydrochloride tablets is extremely limited. The following is based on experience with other anorexians.

Management of acute amphetamine intoxication is largely symptomatic and includes sedation with a barbiturate. If hypertension is marked, the use of a nitrite or rapidly acting alpha receptor blocking agent should be considered. Experience with hemodialysis or peritoneal dialysis is inadequate to permit recommendations in this regard.

Acidification of the urine increases amphetamine excretion.

The oral LD₅₀ is 174 mg/kg in mice and 104 mg/kg in rats. The intraperitoneal LD₅₀ in mice is 153 mg/kg.

DOSAGE AND ADMINISTRATION

Dosage should be individualized according to the response of the patient. The suggested dosage

ranges from 25 to 50 mg one to three times daily. Treatment should begin with 25 to 50 mg once daily with subsequent increase in individual dose or frequency according to response. A single daily dose is preferably given in mid-morning or mid-afternoon, according to the patient's eating habits. In an occasional patient it may be desirable to avoid late afternoon administration. Use of benzphetamine hydrochloride is not recommended in individuals under 12 years of age.

HOW SUPPLIED

Benzphetamine hydrochloride tablets are supplied as pink, round tablets, debossed "BENZ" on one side and "5" score "0" on the other side in bottles of 100 tablets, NDC 43547-263-10, and 500 tablets, NDC 43547-263-50.

Store at controlled room temperature 20° to 25°C (68° to 77°F) [See USP Controlled Room Temperature].

Manufactured for:

Truxton, Inc.

Bellmawr, NJ 08031

Manufactured by:

Mikart, Inc.

Atlanta, GA 30318

Distributed by:

Solco Healthcare US LLC

Humacao, Puerto Rico, PR 00791

Code 1025B00

Rev. 06/11

Principal Display Panel – Bottle Label

NDC 43547-263-10 **Rx only**

Benzphetamine HCl CIII

Tablets

50 mg

100 Tablets

Solco

Healthcare U.S.



BENZPHETAMINE HYDROCHLORIDE

benzphetamine hydrochloride tablet

Product Information			
Product Type	HUMAN PRESCRIPTION DRUG	Item Code (Source)	NDC:43547-263
Route of Administration	ORAL	DEA Schedule	CIII

Active Ingredient/Active Moiety		
Ingredient Name		Strength
benzphetamine hydrochloride (UNII: 43DWT87QT7) (benzphetamine - UNII:0M3S43XK27)		benzphetamine hydrochloride 50 mg

Inactive Ingredients	
Ingredient Name	Strength
calcium stearate (UNII: 776XM7047L)	
d&c red no. 30 (UNII: 2S42T2808B)	
sorbitol (UNII: 506T60A25R)	
starch, corn (UNII: O8232NY3SJ)	

Product Characteristics			
Color	PINK (pink)	Score	2 pieces
Shape	ROUND (ROUND)	Size	10mm
Flavor		Imprint Code	BENZ;5;0
Contains			

Packaging				
#	Item Code	Package Description	Marketing Start Date	Marketing End Date
1	NDC:43547-263-10	100 in 1 BOTTLE, PLASTIC; Type 0: Not a Combination Product	08/01/2011	05/01/2018
2	NDC:43547-263-50	500 in 1 BOTTLE, PLASTIC; Type 0: Not a Combination Product	08/01/2011	05/01/2018

Marketing Information			
Marketing Category	Application Number or Monograph Citation	Marketing Start Date	Marketing End Date
ANDA	ANDA090473	08/01/2011	05/01/2018

Labeler - Solco Healthcare US LLC (828343017)

Registrant - Mikart, Inc. (030034847)

Establishment			
Name	Address	ID/FEI	Business Operations
Mikart, Inc.		030034847	MANUFACTURE(43547-263)

Establishment			
Name	Address	ID/FEI	Business Operations
Mikart, Inc.		013322387	MANUFACTURE(43547-263)