

ZULRESSO- brexanolone injection, solution
Sage Therapeutics, Inc.

HIGHLIGHTS OF PRESCRIBING INFORMATION

These highlights do not include all the information needed to use ZULRESSO safely and effectively. See full prescribing information for ZULRESSO.

ZULRESSO® (brexanolone) injection, for intravenous use, CIV
Initial U.S. Approval: 2019

WARNING: EXCESSIVE SEDATION AND SUDDEN LOSS OF CONSCIOUSNESS

See full prescribing information for complete boxed warning.

- **Patients are at risk of excessive sedation or sudden loss of consciousness during administration of ZULRESSO. (5.1)**
- **Because of the risk of serious harm, patients must be monitored for excessive sedation and sudden loss of consciousness and have continuous pulse oximetry monitoring. Patients must be accompanied during interactions with their child(ren). (5.1)**
- **ZULRESSO is available only through a restricted program called the ZULRESSO REMS. (5.1, 5.2)**

INDICATIONS AND USAGE

ZULRESSO is a neuroactive steroid gamma-aminobutyric acid (GABA) A receptor positive modulator indicated for the treatment of postpartum depression (PPD) in patients 15 years and older. (1)

DOSAGE AND ADMINISTRATION

- A healthcare provider must be available on site to continuously monitor the patient, and intervene as necessary, for the duration of the infusion. (2.1)
- Administered as a continuous intravenous infusion over 60 hours (2.5 days) as follows (2.2):
 - 0 to 4 hours: Initiate with a dosage of 30 mcg/kg/hour
 - 4 to 24 hours: Increase dosage to 60 mcg/kg/hour
 - 24 to 52 hours: Increase dosage to 90 mcg/kg/hour (alternatively consider a dosage of 60 mcg/kg/hour for those who do not tolerate 90 mcg/kg/hour)
 - 52 to 56 hours: Decrease dosage to 60 mcg/kg/hour
 - 56 to 60 hours: Decrease dosage to 30 mcg/kg/hour
- Dilution required prior to administration. (2.3)

DOSAGE FORMS AND STRENGTHS

Injection: 100 mg/20 mL (5 mg/mL) single-dose vial. (3)

CONTRAINDICATIONS

None. (4)

WARNINGS AND PRECAUTIONS

Suicidal Thoughts and Behaviors: Consider changing the therapeutic regimen, including discontinuing ZULRESSO, in patients whose PPD becomes worse or who experience emergent suicidal thoughts and behaviors. (5.3)

ADVERSE REACTIONS

Most common adverse reactions (incidence $\geq 5\%$ and at least twice the rate of placebo) were sedation/somnolence, dry mouth, loss of consciousness, and flushing/hot flush. (6.1)

To report SUSPECTED ADVERSE REACTIONS, contact Sage Therapeutics, Inc. at 1-844-4-SAGERX (1-844-472-4379) or FDA at 1-800-FDA-1088 or www.fda.gov/medwatch.

USE IN SPECIFIC POPULATIONS

- Pregnancy: May cause fetal harm. (8.1)
- Avoid use in patients with end stage renal disease (ESRD). (8.7)

See 17 for PATIENT COUNSELING INFORMATION and Medication Guide.

Revised: 7/2024

FULL PRESCRIBING INFORMATION: CONTENTS*

WARNING: EXCESSIVE SEDATION AND SUDDEN LOSS OF CONSCIOUSNESS

1 INDICATIONS AND USAGE

2 DOSAGE AND ADMINISTRATION

- 2.1 Important Considerations Prior to Initiating and During Therapy
- 2.2 Recommended Dosage
- 2.3 Preparation and Storage Instructions
- 2.4 Administration Instructions
- 2.5 Recommendations in Patients with End Stage Renal Disease

3 DOSAGE FORMS AND STRENGTHS

4 CONTRAINDICATIONS

5 WARNINGS AND PRECAUTIONS

- 5.1 Excessive Sedation and Sudden Loss of Consciousness
- 5.2 ZULRESSO Risk Evaluation and Mitigation Strategy (REMS)
- 5.3 Suicidal Thoughts and Behaviors

6 ADVERSE REACTIONS

- 6.1 Clinical Trials Experience

7 DRUG INTERACTIONS

- 7.1 CNS Depressants
- 7.2 Antidepressants

8 USE IN SPECIFIC POPULATIONS

- 8.1 Pregnancy
- 8.2 Lactation
- 8.4 Pediatric Use
- 8.5 Geriatric Use
- 8.6 Hepatic Impairment
- 8.7 Renal Impairment

9 DRUG ABUSE AND DEPENDENCE

- 9.1 Controlled Substance
- 9.2 Abuse
- 9.3 Dependence

10 OVERDOSAGE

11 DESCRIPTION

12 CLINICAL PHARMACOLOGY

- 12.1 Mechanism of Action
- 12.2 Pharmacodynamics
- 12.3 Pharmacokinetics
- 12.6 Betadex Sulfobutyl Ether Sodium Pharmacokinetics

13 NONCLINICAL TOXICOLOGY

- 13.1 Carcinogenesis, Mutagenesis, Impairment of Fertility

14 CLINICAL STUDIES

16 HOW SUPPLIED/STORAGE AND HANDLING

17 PATIENT COUNSELING INFORMATION

* Sections or subsections omitted from the full prescribing information are not listed.

WARNING: EXCESSIVE SEDATION AND SUDDEN LOSS OF CONSCIOUSNESS

Patients treated with ZULRESSO are at risk of excessive sedation or sudden loss of consciousness during administration [see Warnings and Precautions (5.1)].

Because of the risk of serious harm, patients must be monitored for excessive sedation and sudden loss of consciousness and have continuous pulse oximetry monitoring. Patients must be accompanied during interactions with their child(ren) [see Warnings and Precautions (5.1)].

Because of these risks, ZULRESSO is available only through a restricted program under a Risk Evaluation and Mitigation Strategy (REMS) called the ZULRESSO REMS [see Warnings and Precautions (5.2)].

1 INDICATIONS AND USAGE

ZULRESSO is indicated for the treatment of postpartum depression (PPD) in patients 15 years and older [see *Clinical Studies (14)*].

2 DOSAGE AND ADMINISTRATION

2.1 Important Considerations Prior to Initiating and During Therapy

A healthcare provider must be available on site to continuously monitor the patient, and intervene as necessary, for the duration of the ZULRESSO infusion.

Monitor patients for hypoxia using continuous pulse oximetry equipped with an alarm. Assess for excessive sedation every 2 hours during planned, non-sleep periods [see *Warnings and Precautions (5.1)*].

Initiate ZULRESSO treatment early enough during the day to allow for recognition of excessive sedation [see *Warnings and Precautions (5.1)*].

2.2 Recommended Dosage

Administer ZULRESSO as a continuous intravenous (IV) infusion over a total of 60 hours (2.5 days) as follows:

- 0 to 4 hours: Initiate with a dosage of 30 mcg/kg/hour
- 4 to 24 hours: Increase dosage to 60 mcg/kg/hour
- 24 to 52 hours: Increase dosage to 90 mcg/kg/hour (a reduction in dosage to 60 mcg/kg/hour may be considered during this time period for patients who do not tolerate 90 mcg/kg/hour)
- 52 to 56 hours: Decrease dosage to 60 mcg/kg/hour
- 56 to 60 hours: Decrease dosage to 30 mcg/kg/hour

If excessive sedation occurs at any time during the infusion, stop the infusion until the symptoms resolve. The infusion may be resumed at the same or lower dose as clinically appropriate.

2.3 Preparation and Storage Instructions

ZULRESSO is supplied in vials as a concentrated solution that requires dilution prior to administration. After dilution, the product can be stored in infusion bags under

refrigerated conditions for up to 96 hours. However, given that the diluted product can be used for only 12 hours at room temperature, each 60-hour infusion will require the preparation of at least five infusion bags.

Prepare according to the following steps using aseptic technique:

- Visually inspect the vials of ZULRESSO for particulate matter and discoloration prior to administration. ZULRESSO is a clear, colorless solution. Do not use if the solution is discolored or particulate matter is present.
- The 60-hour infusion will generally require the preparation of five infusion bags. Additional bags will be needed for patients weighing ≥ 90 kg.
- For each infusion bag:
 - Prepare and store in a polyolefin, non-DEHP, nonlatex bag, only. Dilute in the infusion bag immediately after the initial puncture of the drug product vial.
 - Withdraw 20 mL of ZULRESSO from the vial and place in the infusion bag. Dilute with 40 mL of Sterile Water for Injection, and further dilute with 40 mL of 0.9% Sodium Chloride Injection (total volume of 100 mL) to achieve a target concentration of 1 mg/mL.
 - Immediately place the infusion bag under refrigerated conditions until use.

Diluted ZULRESSO storage instructions:

- If not used immediately after dilution, store under refrigerated conditions for up to 96 hours. Prolonged storage at room temperature may support adventitious microbial growth.
- Each prepared bag of diluted ZULRESSO may be used for up to 12 hours of infusion time at room temperature. Discard any unused ZULRESSO after 12 hours of infusion.

2.4 Administration Instructions

ZULRESSO must be diluted before administration [see *Dosage and Administration (2.3)*]. The following are important administration instructions:

- Use a programmable peristaltic infusion pump to ensure accurate delivery of ZULRESSO.
- Administer ZULRESSO via a dedicated line. Do not inject other medications into the infusion bag or mix with ZULRESSO.
- Fully prime infusion administration sets with admixture before inserting into the pump and connecting to the venous catheter.
- Use a PVC, non-DEHP, nonlatex infusion set. Do not use in-line filter infusion sets.

2.5 Recommendations in Patients with End Stage Renal Disease

Avoid use of ZULRESSO in patients with end stage renal disease (ESRD) with eGFR of < 15 mL/minute/1.73 m² because of the potential accumulation of the solubilizing agent, betadex sulfobutyl ether sodium [see *Clinical Pharmacology (12.3, 12.6)*].

3 DOSAGE FORMS AND STRENGTHS

Injection: 100 mg/20 mL (5 mg/mL) clear, colorless solution in a single-dose vial.

4 CONTRAINDICATIONS

None.

5 WARNINGS AND PRECAUTIONS

5.1 Excessive Sedation and Sudden Loss of Consciousness

In clinical studies in adults, ZULRESSO caused sedation and somnolence that required dose interruption or reduction in some patients during the infusion (5% of ZULRESSO-treated patients compared to 0% of placebo-treated patients). Some adult patients were also reported to have loss of consciousness or altered state of consciousness during the ZULRESSO infusion (4% of the ZULRESSO-treated patients compared with 0% of the placebo-treated patients). Time to full recovery from loss or altered state of consciousness, after dose interruption, ranged from 15 to 60 minutes in clinical studies in adults. A healthy 55-year-old man participating in a cardiac repolarization study experienced severe somnolence and <1 minute of apnea while receiving two times the maximum recommended dosage of ZULRESSO (180 mcg/kg/hour).

In an open-label clinical study in 20 patients ages 15 to 17 years, one patient experienced dizziness and loss of consciousness.

All patients with loss of or altered state of consciousness recovered with dose interruption. There was no clear association between loss or alteration of consciousness and pattern or timing of dose. Not all patients who experienced a loss or alteration of consciousness reported sedation or somnolence before the episode.

During the infusion, monitor patients for sedative effects every 2 hours during planned, non-sleep periods. Immediately stop the infusion if there are signs or symptoms of excessive sedation.

After symptoms resolve, the infusion may be resumed at the same or lower dose as clinically appropriate [see *Dosage and Administration (2.2)*].

Immediately stop the infusion if pulse oximetry reveals hypoxia. After hypoxia, the infusion should not be resumed.

Patients should be cautioned against engaging in potentially hazardous activities requiring mental alertness, such as driving after infusion until any sedative effects of ZULRESSO have dissipated. Patients must be accompanied during interactions with their child(ren) while receiving the infusion because of the potential for excessive sedation and sudden loss of consciousness.

Concomitant use of opioids, antidepressants, or other CNS depressants such as benzodiazepines or alcohol may increase the likelihood or severity of adverse reactions related to sedation [see *Drug Interactions (7.1, 7.2)*].

Because of the risk of serious harm resulting from excessive sedation or sudden loss of consciousness, ZULRESSO is available only through a restricted program under a Risk Evaluation and Mitigation Strategy (REMS) called the ZULRESSO REMS [see *Warnings and Precautions (5.2)*].

5.2 ZULRESSO Risk Evaluation and Mitigation Strategy (REMS)

ZULRESSO is available only through a restricted program under a REMS called the ZULRESSO REMS because excessive sedation or sudden loss of consciousness can result in serious harm [see *Warnings and Precautions (5.1)*].

Notable requirements of the ZULRESSO REMS include the following:

- Healthcare facilities must enroll in the program and ensure that ZULRESSO is only administered to patients who are enrolled in the ZULRESSO REMS.
- Pharmacies must be certified with the program and must only dispense ZULRESSO to healthcare facilities who are certified in the ZULRESSO REMS.
- Patients must be enrolled in the ZULRESSO REMS prior to administration of ZULRESSO.

- Wholesalers and distributors must be registered with the program and must only distribute to certified healthcare facilities and pharmacies.

Further information, including a list of certified healthcare facilities, is available at www.zulressoems.com or 1-844-472-4379.

5.3 Suicidal Thoughts and Behaviors

In pooled analyses of placebo-controlled trials of chronically administered antidepressant drugs (SSRIs and other antidepressant classes) that included approximately 77,000 adult patients and 4,500 pediatric patients, the incidence of suicidal thoughts and behaviors in antidepressant-treated patients age 24 years and younger was greater than in placebo-treated patients. There was considerable variation in risk of suicidal thoughts and behaviors among drugs, but there was an increased risk identified in young patients for most drugs studied. There were differences in absolute risk of suicidal thoughts and behaviors across the different indications, with the highest incidence in patients with major depressive disorder (MDD). The drug-placebo differences in the number of cases of suicidal thoughts and behaviors per 1000 patients treated are provided in Table 1.

Table 1: Risk Differences of the Number of Patients with Suicidal Thoughts or Behaviors in the Pooled Placebo-Controlled Trials of Antidepressants in Pediatric* and Adult Patients

Age Range (years)	Drug-Placebo Difference in Number of Patients with Suicidal Thoughts or Behaviors per 1000 Patients Treated
	Increases Compared to Placebo
<18	14 additional patients
18-24	5 additional patients
	Decreases Compared to Placebo
25-64	1 fewer patient

* ZULRESSO is not approved in patients less than 15 years old.

ZULRESSO does not directly affect monoaminergic systems. Because of this and the comparatively low number of exposures to ZULRESSO, the risk of developing suicidal thoughts and behaviors with ZULRESSO is unknown. Consider changing the therapeutic regimen, including discontinuing ZULRESSO, in patients whose depression becomes worse or who experience emergent suicidal thoughts and behaviors.

6 ADVERSE REACTIONS

The following adverse reactions are discussed in more detail in other sections of the labeling:

- Excessive Sedation and Sudden Loss of Consciousness [see Boxed Warning, Warnings and Precautions (5.1)]

6.1 Clinical Trials Experience

Because clinical trials are conducted under widely varying conditions, adverse reaction rates observed in clinical trials of a drug cannot be directly compared to rates in the clinical trials of another drug and may not reflect the rates observed in clinical practice.

The safety of ZULRESSO was evaluated in 140 adult patients with postpartum depression (PPD). A titration to a target dosage of 90 mcg/kg/hour was evaluated in 102 adult patients and a titration to a target dose of 60 mcg/kg/hour was evaluated in 38

adult patients [see *Clinical Studies (14)*]. Patients were then followed for 4 weeks.

The most common adverse reactions (incidence $\geq 5\%$ and at least twice the rate of placebo) were sedation/somnolence, dry mouth, loss of consciousness, and flushing/hot flush (Table 2).

Adverse Reactions Leading to Discontinuation, Dosage Interruption, or Dosage Reduction

In the pooled placebo controlled-studies in adults, the incidence of patients who discontinued due to any adverse reaction was 2% of ZULRESSO-treated patients compared to 1% of placebo-treated patients. The adverse reactions leading to treatment discontinuation in ZULRESSO-treated patients were sedation-related (loss of consciousness, vertigo, syncope, and presyncope) or infusion site pain.

In the pooled placebo controlled-studies in adults, the incidence of patients who had an interruption or reduction of the dosage due to any adverse reaction was 7% of ZULRESSO-treated patients compared to 3% of placebo-treated patients. The adverse reactions leading to dose reduction or interruption in ZULRESSO-treated patients were sedation-related (loss of consciousness, syncope, somnolence, dizziness, fatigue), infusion site events, changes in blood pressure, or medication error due to infusion pump malfunction. Three ZULRESSO-treated patients who had a dosage interruption because of loss of consciousness subsequently resumed and completed treatment after resolution of symptoms; two patients who had dosage interruption because of loss of consciousness did not resume the infusion.

Table 2 presents the adverse reactions that occurred in ZULRESSO-treated adult PPD patients at a rate of at least 2% and at a higher rate than in the placebo-treated patients during the 60-hour treatment period.

Table 2: Adverse Reactions in Placebo-Controlled Studies in Adults with PPD Reported in $\geq 2\%$ of ZULRESSO-Treated Patients and Greater than Placebo-Treated Patients

	Placebo (n=107)	Maximum dosage 60 mcg/kg/hour (n=38)	Maximum dosage 90 mcg/kg/hour (Recommended dosage) (n=102)
Cardiac Disorders			
Tachycardia	-	-	3%
Gastrointestinal Disorders			
Diarrhea	1%	3%	2%
Dry mouth	1%	11%	3%
Dyspepsia	-	-	2%
Oropharyngeal pain	-	3%	2%
Nervous System Disorders			
Dizziness, presyncope, vertigo	7%	13%	12%
Loss of consciousness	-	5%	3%
Sedation, somnolence	6%	21%	13%
Vascular Disorders			
Flushing, hot flush	-	5%	2%

Patients 15 to 17 Years

The safety of ZULRESSO was evaluated in an open-label study in patients 15 to 17 years. A titration to a target dosage of 90 mcg/kg/hour was evaluated in 20 patients with PPD. Patients were then followed for 4 weeks. Adverse reactions reported in the clinical study were generally similar to those observed in clinical studies of ZULRESSO in adults with PPD.

7 DRUG INTERACTIONS

7.1 CNS Depressants

Concomitant use of ZULRESSO with CNS depressants (e.g., opioids, benzodiazepines) may increase the likelihood or severity of adverse reactions related to sedation [see *Warnings and Precautions (5.1)*].

7.2 Antidepressants

In the placebo-controlled studies, a higher percentage of ZULRESSO-treated patients who used concomitant antidepressants reported sedation-related events [see *Warnings and Precautions (5.1)*].

8 USE IN SPECIFIC POPULATIONS

8.1 Pregnancy

Pregnancy Exposure Registry

There is a pregnancy exposure registry that monitors pregnancy outcomes in women exposed to antidepressants during pregnancy. Healthcare providers are encouraged to register patients by calling the National Pregnancy Registry for Antidepressants at 1-844-405-6185 or visiting online at <https://womensmentalhealth.org/clinical-and-research-programs/pregnancyregistry/antidepressants/>.

Risk Summary

Based on findings from animal studies of other drugs that enhance GABAergic inhibition, ZULRESSO may cause fetal harm. Available data from case reports with ZULRESSO use in pregnant women are insufficient to establish a drug-associated risk of major birth defects, miscarriage, or adverse maternal or fetal outcomes. In animal reproduction studies, malformations were not seen in rats or rabbits at plasma levels up to 5 and 6 times the maximum recommended human dose (MRHD), respectively. Developmental toxicities were seen in the fetuses of rats and rabbits at 5 and ≥ 3 times the plasma levels at the MRHD, respectively. Reproductive toxicities were seen in rabbits at ≥ 3 times the plasma levels at the MRHD. These effects were not seen in rats and rabbits at 2 and 1.2 times the plasma levels at the MRHD. Brexanolone administered to pregnant rats during pregnancy and lactation resulted in lower pup survival at doses which were associated with ≥ 2 times the plasma levels at the MRHD and a neurobehavioral deficit in female offspring at 5 times the plasma levels at the MRHD. These effects were not seen at 0.8 times and 2 times the plasma levels at the MRHD, respectively (see *Data*).

In published animal studies, administration of other drugs that enhance GABAergic inhibition to neonatal rats caused widespread apoptotic neurodegeneration in the developing brain. The window of vulnerability to these changes in rats (postnatal days 0-14) corresponds to the period of brain development that takes place during the third trimester of pregnancy in humans.

The estimated background risk of major birth defects and miscarriage for the indicated population is unknown. All pregnancies have background risk of birth defect, loss, or

other adverse outcomes. In the U.S. general population, the estimated background risk of major birth defects and miscarriage in clinically recognized pregnancies is 2 to 4% and 15 to 20%, respectively.

Data

Animal Data

In pregnant rats and rabbits, no malformations were seen when brexanolone was given during the period of organogenesis at continuous intravenous doses up to 60 and 30 mg/kg/day, respectively. These doses were associated with maternal plasma levels 5 and 6 times the plasma levels at the MRHD of 90 mcg/kg/hour, in rats and rabbits, respectively. In rats, a decrease in fetal body weights was seen at 60 mg/kg/day (5 times the plasma level at the MRHD). In rabbits, increased numbers of late resorptions and a decrease in fetal body weights were seen at doses equal to and greater than 15 mg/kg/day (3 times the plasma levels at the MRHD) with fewer live fetuses and a higher post implantation loss seen at 30 mg/kg/day (6 times the plasma levels at the MRHD) in the presence of maternal toxicity (decreased food consumption and decreased body weight gain and/or body weight loss). Effects in rats and rabbits were not seen at 2 and 1.2 times the plasma levels at the MRHD, respectively.

When brexanolone was administered to pregnant rats by continuous intravenous administration at 30 and 60 mg/kg/day (2 and 5 times plasma levels at the MRHD, respectively) during the period of organogenesis and throughout pregnancy and lactation, increased numbers of dead pups and fewer live pups at birth were seen. This effect was not seen at 0.8 times the plasma levels at the MRHD. Decreased pup viability between postnatal day 0 and 4 in the presence of maternal toxicity (decreased body weight gain and food consumption during lactation) was seen at 5 times the plasma levels at the MRHD. These effects were not seen at 2 times the plasma levels at the MRHD. A neurobehavioral deficit, characterized by slower habituation in the maximal startle response in the auditory startle test, was seen in female offspring of dams dosed at 5 times the plasma levels at the MRHD. This effect was not seen at 2 times the plasma levels at the MRHD.

8.2 Lactation

Risk Summary

Available data from a lactation study in 12 adult women indicate that brexanolone is transferred to breastmilk in nursing mothers. However, the relative infant dose (RID) is low, 1% to 2% of the maternal weight-adjusted dosage (*see Data*). Also, as ZULRESSO has low oral bioavailability (<5%) in adults, infant exposure is expected to be low. There were no reports of effects of ZULRESSO on milk production. There are no data on the effects of ZULRESSO on a breastfed infant. Available data on the use of ZULRESSO during lactation do not suggest a significant risk of adverse reactions to breastfed infants from exposure to ZULRESSO. The developmental and health benefits of breastfeeding should be considered along with the mother's clinical need for ZULRESSO and any potential adverse effects on the breastfed child from ZULRESSO or from the underlying maternal condition.

Data

A study was conducted in twelve healthy adult lactating women treated with intravenous ZULRESSO according to the recommended 60-hour dosing regimen (maximum dosage was 90 mcg/kg/hour). Concentrations of ZULRESSO in breast milk were at low levels (<10 ng/mL) in >95% of women by 36 hours after the end of the infusion of ZULRESSO. The calculated maximum relative infant dose for ZULRESSO during the infusion was 1% to 2%.

8.4 Pediatric Use

Safety and effectiveness of ZULRESSO for the treatment of PPD have been established in patients 15 to 17 years.

Use of ZULRESSO in this population is supported by evidence from adequate and well-controlled studies in adults with PPD, pharmacokinetic data in adults and patients 15 to 17 years, and safety data in patients 15 to 17 years [see *Warnings and Precautions (5.3)*, *Adverse Reactions (6.1)*, and *Clinical Pharmacology (12.3)*].

The safety and effectiveness of ZULRESSO in patients less than 15 years of age have not been established.

8.5 Geriatric Use

PPD is a condition associated with pregnancy; there is no geriatric experience with ZULRESSO.

8.6 Hepatic Impairment

Dosage adjustment in patients with hepatic impairment is not necessary. Modest increases in exposure to unbound brexanolone and modest decreases in exposure to total brexanolone were observed in patients with moderate to severe hepatic impairment (Child-Pugh \geq 7) with no associated change in tolerability [see *Clinical Pharmacology (12.3)*].

8.7 Renal Impairment

No dosage adjustment is recommended in patients with mild (eGFR 60 to 89 mL/minute/1.73 m²), moderate (eGFR 30 to 59 mL/minute/1.73 m²) or severe (eGFR 15 to 29 mL/minute/1.73 m²) renal impairment [see *Clinical Pharmacology (12.3)*].

Avoid use of ZULRESSO in patients with end stage renal disease (ESRD) with eGFR of < 15 mL/minute/1.73 m² because of the potential accumulation of the solubilizing agent, betadex sulfobutyl ether sodium [see *Clinical Pharmacology (12.3, 12.6)*].

9 DRUG ABUSE AND DEPENDENCE

9.1 Controlled Substance

ZULRESSO contains brexanolone, a Schedule IV controlled substance.

9.2 Abuse

In a human abuse potential study, 90 mcg/kg, 180 mcg/kg (two times the maximum recommended infusion rate), and 270 mcg/kg (three times the maximum recommended infusion rate) ZULRESSO infusions over a one-hour period were compared to oral alprazolam administration (1.5 mg and 3 mg). On positive subjective measures of "drug liking", "overall drug liking", "high" and "good drug effects", the 90 mcg/kg dosage produced scores that were similar to placebo. Scores on these positive subjective measures for both dosages of ZULRESSO 90 mcg/kg and 180 mcg/kg were lower than both alprazolam doses. However, the scores on the positive subjective measures for ZULRESSO 270 mcg/kg dosage were similar to those produced by both doses of alprazolam. In this study, 3% of subjects administered ZULRESSO 90 mcg/kg and 13% administered ZULRESSO 270 mcg/kg reported euphoric mood, compared to none administered placebo during the one-hour administration.

9.3 Dependence

In the PPD clinical studies conducted with ZULRESSO, end of treatment occurred through tapering. Thus, in these studies it was not possible to assess whether abrupt discontinuation of ZULRESSO produced withdrawal symptoms indicative of physical dependence. It is recommended that ZULRESSO be tapered according to the dosage recommendations, unless symptoms warrant immediate discontinuation [see *Dosage and Administration (2.2)*, *Warnings and Precautions (5.1)*].

10 OVERDOSAGE

Human Experience

There is limited clinical trial experience regarding human overdose with ZULRESSO. In premarketing clinical studies, two cases of accidental overdose due to infusion pump malfunction resulted in transient loss of consciousness. Both patients regained consciousness approximately 15 minutes after discontinuation of the infusion without supportive measures. After full resolution of symptoms, both patients subsequently resumed and completed treatment. Overdosage may result in excessive sedation, including loss of consciousness [see *Warnings and Precautions (5.1)*] and the potential for accompanying respiratory changes.

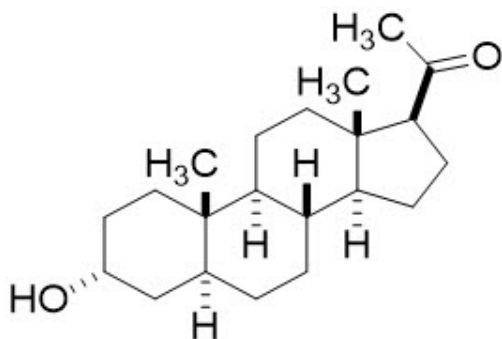
Management of Overdose

In case of overdose, stop the infusion immediately and initiate supportive measures as necessary. Brexanolone is rapidly cleared from plasma [see *Clinical Pharmacology (12.3)*]. Consult a Certified Poison Control Center at 1-800-222-1222 for latest recommendations.

11 DESCRIPTION

ZULRESSO contains brexanolone, a neuroactive steroid gamma-aminobutyric acid (GABA) A receptor positive modulator, that is chemically identical to endogenous allopregnanolone.

The molecular formula of brexanolone is $C_{21}H_{34}O_2$. The relative molecular mass is 318.5 Da. The chemical structure is:



ZULRESSO (brexanolone) injection is a sterile, clear, colorless, and preservative-free solution. ZULRESSO 5 mg/mL is hypertonic and must be diluted prior to administration as an intravenous infusion [see *Dosage and Administration (2.3)*]. Each mL of solution contains 5 mg of brexanolone, 250 mg of betadex sulfobutyl ether sodium, 0.265 mg of citric acid monohydrate, 2.57 mg of sodium citrate dihydrate, and water for injection. Hydrochloric acid or sodium hydroxide may be used during manufacturing to adjust pH.

12 CLINICAL PHARMACOLOGY

12.1 Mechanism of Action

The mechanism of action of brexanolone in the treatment of PPD is not fully understood, but is thought to be related to its positive allosteric modulation of GABA_A receptors.

12.2 Pharmacodynamics

Brexanolone potentiated GABA-mediated currents from recombinant human GABA_A receptors in mammalian cells expressing $\alpha_1\beta_2\gamma_2$ receptor subunits, $\alpha_4\beta_3\delta$ receptor subunits, and $\alpha_6\beta_3\delta$ receptor subunits.

Brexanolone exposure-response relationships and the time course of pharmacodynamics response are unknown.

Cardiac Electrophysiology

The effect of brexanolone on the QT interval was evaluated in a Phase 1 randomized, placebo and positive controlled, double-blind, three-period crossover thorough QT study in 30 healthy adult subjects. At 1.9-times the exposure occurring at the highest recommended infusion rate (90 mcg/kg/hour), brexanolone did not prolong the QT interval to a clinically relevant extent.

12.3 Pharmacokinetics

Brexanolone exhibited dose proportional pharmacokinetics over a dosage range of 30 mcg/kg/hour to 270 mcg/kg/hour (three times the maximum recommended dosage). Mean steady state exposure at 60 mcg/kg/hour and 90 mcg/kg/hour was around 52 ng/mL and 79 ng/mL, respectively.

Distribution

The volume of distribution of brexanolone was approximately 3 L/kg, suggesting extensive distribution into tissues. Plasma protein binding was greater than 99% and is independent of plasma concentrations.

Elimination

The terminal half-life of brexanolone is approximately 9 hours. The total plasma clearance of brexanolone is approximately 1 L/h/kg.

Metabolism

Brexanolone is extensively metabolized by non-CYP based pathways via three main routes - keto-reduction (AKRs), glucuronidation (UGTs), and sulfation (SULTs). There are three major circulating metabolites that are pharmacologically inactive and do not contribute to the overall efficacy of ZULRESSO.

Excretion

Following administration of radiolabeled brexanolone, 47% was recovered in feces (primarily as metabolites) and 42% in urine (with less than 1% as unchanged brexanolone).

Specific Populations

Patients 15 to 17 years

Brexanolone pharmacokinetics were evaluated in 20 patients with PPD (15 to 17 years) and were comparable to those in adult patients with PPD.

Patients with Renal or Hepatic Impairment

No clinically significant differences in the pharmacokinetics of brexanolone were observed based on renal impairment (severe) study or hepatic impairment (mild,

moderate, severe) study. The effect of end stage renal disease (ESRD, eGFR < 15 mL/minute/1.73 m²) on brexanolone pharmacokinetics is unknown. However, avoid use of ZULRESSO in patients with ESRD [see Use in Specific Populations (8.7)].

Drug Interaction Studies

No studies were conducted to evaluate the effects of other drugs on ZULRESSO.

No clinically significant differences in the pharmacokinetics of phenytoin (CYP2C9 substrate) were observed when it was used concomitantly with brexanolone.

12.6 Betadex Sulfobutyl Ether Sodium Pharmacokinetics

Betadex sulfobutyl ether sodium is a solubilizing agent in ZULRESSO. In patients with severe renal impairment (eGFR 15-29 mL/minute/1.73 m²), betadex sulfobutyl ether sodium AUC_{inf} increased 5.5-fold and C_{max} increased 1.7-fold. Avoid use of ZULRESSO in patients with ESRD [see Use in Specific Populations (8.7)].

13 NONCLINICAL TOXICOLOGY

13.1 Carcinogenesis, Mutagenesis, Impairment of Fertility

Carcinogenesis

Carcinogenicity studies of brexanolone have not been performed.

Mutagenesis

Brexanolone was not genotoxic when tested in an in vitro microbial mutagenicity (Ames) assay, an in vitro micronucleus assay in human peripheral blood lymphocytes, and an in vivo rat bone marrow micronucleus assay.

Impairment of Fertility

Treatment of female and male rats with brexanolone at doses equal to and greater than 30 mg/kg/day, which is associated with 2 times the plasma levels at the maximum recommended human dose (MRHD) of 90 mcg/kg/hour, caused impairment of female and male fertility and reproduction. In female rats, brexanolone was associated with decreased mating and fertility indices, an increase in number of days to mating, prolonged/irregular estrous cycles, an increase in the number of early resorptions, and post implantation loss. Reversal of effects in females was observed following a 28-day recovery period. In male rats, brexanolone was associated with decreased mating and fertility indices, decreased conception rate, lower prostate, seminal vesicle, and epididymis weight, as well as decreased sperm numbers. Impaired female and male fertility and reproduction were not observed at 0.8 times the MRHD.

14 CLINICAL STUDIES

The efficacy of ZULRESSO in the treatment of postpartum depression (PPD) was demonstrated in two multicenter, randomized, double-blind, placebo-controlled studies (referred to as Studies 1 and 2) in women (18 to 45 years) with PPD who met the Diagnostic and Statistical Manual of Mental Disorders criteria for a major depressive episode (DSM-IV) with onset of symptoms in the third trimester or within 4 weeks of delivery. In these studies, patients received a 60-hour continuous intravenous infusion of ZULRESSO or placebo and were then followed for 4 weeks. Study 1 (NCT02942004) included patients with severe PPD (Hamilton Depression Rating Scale (HAM-D) score ≥ 26), and Study 2 (NCT02942017) included patients with moderate PPD (HAM-D score of 20 to 25). A titration to the recommended target dosage of 90 mcg/kg/hour was

evaluated in both studies (patients received 30 mcg/kg/hour for 4 hours, 60 mcg/kg/hour for 20 hours, 90 mcg/kg/hour for 28 hours, followed by a taper to 60 mcg/kg/hour for 4 hours and then 30 mcg/kg/hour for 4 hours). A titration to a target dosage of 60 mcg/kg/hour (patients received 30 mcg/kg/hour for 4 hours, 60 mcg/kg/hour for 52 hours, then 30 mcg/kg/hour for 4 hours) was also evaluated in Study 1.

Demographic and baseline disease characteristics were generally similar across treatment groups in the pooled Studies 1 and 2. Most patients were White (63%) or Black (34%); 18% of patients identified as Hispanic or Latina; the average age of women receiving ZULRESSO was 28 years. Most patients (76%) had onset of PPD symptoms within 4 weeks after delivery, with the remainder having onset during the third trimester. Baseline oral antidepressant use was reported for 23% of patients.

The primary endpoint was the mean change from baseline in depressive symptoms as measured by the HAM-D total score at the end of the infusion (Hour 60). A pre-specified secondary efficacy endpoint was the mean change from baseline in HAM-D total score at Day 30. In both placebo-controlled studies, titration to a target dose of ZULRESSO 90 mcg/kg/hour was superior to placebo in improvement of depressive symptoms. In a group of 38 patients in Study 1, a ZULRESSO titration to a target dose of 60 mcg/kg/hour was also superior to placebo in improvement of depressive symptoms.

Table 3: Results for the Primary Endpoint - HAM-D Total Score (Studies 1 and 2)

Study Number	Treatment Group (# ITT subject)	Primary Endpoint: Change from Baseline in HAM-D Total Score at Hour 60		
		Mean Baseline Score (SD)	LS Mean Change from Baseline (SE)	Placebo-subtracted Difference (95% CI) Unadjusted p-value
1	ZULRESSO target dosage 90 mcg/kg/hour (n=41)*	28.4 (2.5)	-17.7 (1.2)	-3.7 (-6.9, -0.5) P=0.0252
	Placebo (n=43)	28.6 (2.5)	-14.0 (1.1)	
	ZULRESSO target dosage 60 mcg/kg/hour (n=38)*	29.0 (2.7)	-19.5 (1.2)	-5.5 (-8.8, -2.2) P=0.0013
	Placebo (n=43)	28.6 (2.5)	-14.0 (1.1)	
2	ZULRESSO target dosage 90 mcg/kg/hour (n=51)*	22.6 (1.6)	-14.6 (0.8)	-2.5 (-4.5, -0.5) P=0.0160
	Placebo (n=53)	22.7 (1.6)	-12.1 (0.8)	

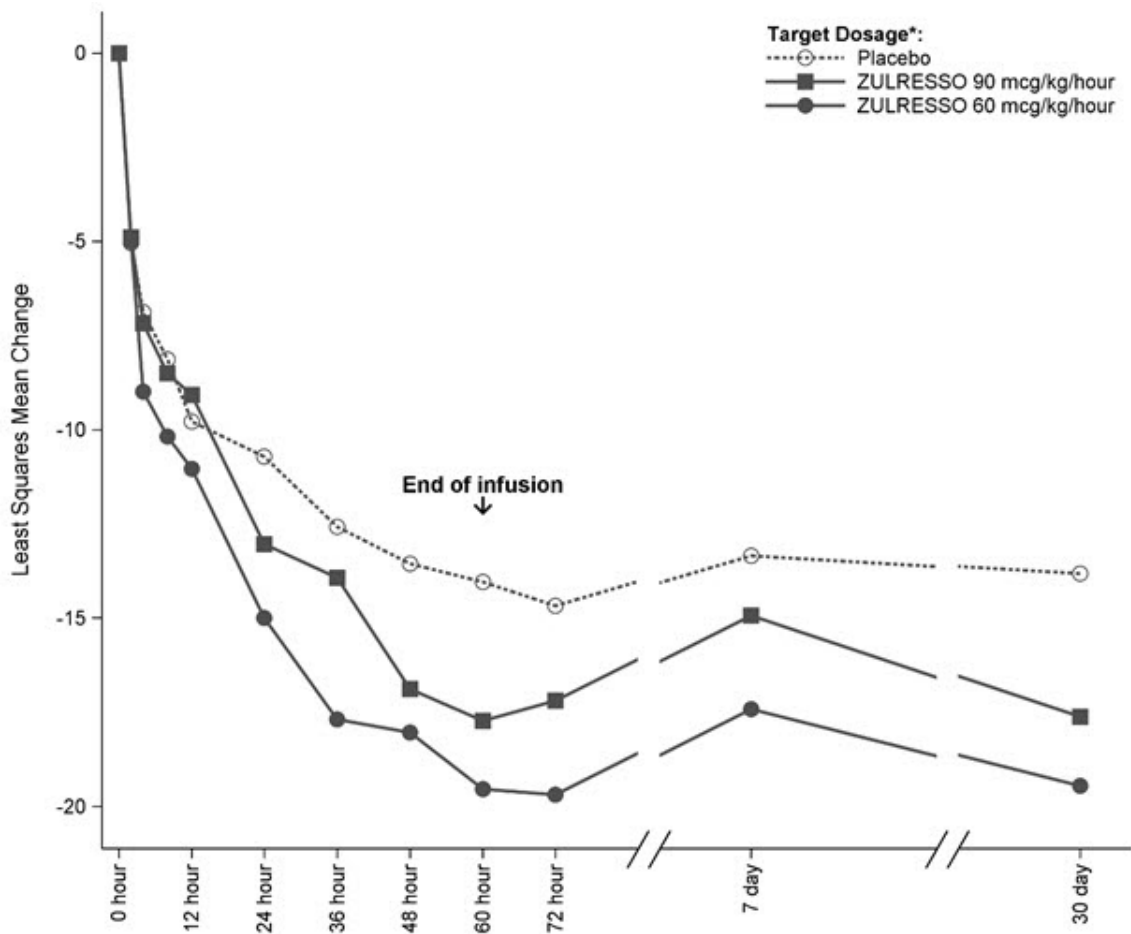
HAM-D: Hamilton depression rating scale; ITT: intention to treat; SD: standard deviation; LS: least squares; SE: standard error; CI: confidence interval; *: statistically significant after multiplicity adjustments

Examination of subgroups by race did not suggest differences in response.

Time Course of Treatment Response

Figure 1 shows the time course of response for the ZULRESSO 90 mcg/kg/hour-target and 60 mcg/kg/hour-target groups compared to the placebo group for Study 1.

Figure 1: Change from Baseline in HAM-D Total Score Over Time (Days) in Study 1



*ZULRESSO was administered via a 60-hour intravenous infusion as follows:

90 mcg/kg/hour-target dosage: 30 mcg/kg/hour for 4 hours, 60 mcg/kg/hour for 20 hours, 90 mcg/kg/hour for 28 hours,

60 mcg/kg/hour for 4 hours, 30 mcg/kg/hour for 4 hours

60 mcg/kg/hour-target dosage: 30 mcg/kg/hour for 4 hours, 60 mcg/kg/hour for 52 hours, 30 mcg/kg/hour for 4 hours

16 HOW SUPPLIED/STORAGE AND HANDLING

How Supplied

ZULRESSO injection is supplied as 100 mg brexanolone in 20 mL (5 mg/mL) single-dose vials containing a sterile, preservative-free, clear, colorless solution. NDC 72152-547-20

Storage and Handling

Store the undiluted ZULRESSO product at 2°C to 8°C (36°F to 46°F). Do not freeze. Store protected from light.

The diluted product in the infusion bag can be used at room temperature for up to 12 hours. If the diluted product is not used immediately after dilution, store under refrigerated conditions for up to 96 hours [see *Dosage and Administration (2.3)*].

17 PATIENT COUNSELING INFORMATION

Advise the patient to read the FDA-approved patient labeling (Medication Guide).

Excessive Sedation and Sudden Loss of Consciousness

Patients may experience loss of consciousness or altered state of consciousness during the ZULRESSO infusion. Advise patients to report signs of excessive sedation that may

occur during the infusion. Patients must not be the primary caregiver of dependents and must be accompanied during interactions with their child(ren) [see *Warnings and Precautions (5.1)*].

ZULRESSO Risk Evaluation and Mitigation Strategy (REMS)

ZULRESSO is available only through a restricted program called the ZULRESSO REMS [see *Warnings and Precautions (5.2)*].

Inform the patient of the following notable requirements:

- Patients must be enrolled in the ZULRESSO REMS Program prior to administration.
- Patients must be monitored during administration of ZULRESSO and report any signs and symptoms of excessive sedation to a healthcare provider.

Potential for Abuse

Advise patients that ZULRESSO can be abused or lead to dependence [see *Drug Abuse and Dependence (9)*].

Concomitant Medications

Caution patients that opioids or other CNS depressants, such as benzodiazepines, taken in combination with ZULRESSO may increase the severity of sedative effects [see *Warnings and Precautions (5.1, 5.2), Drug Interactions (7.1)*].

Suicide Thoughts and Behaviors

Advise patients and caregivers to look for the emergence of suicidal thoughts and behavior and instruct them to report such symptoms to the healthcare provider [see *Warnings and Precautions (5.3)*].

Pregnancy

Advise women to notify their healthcare provider if they could possibly be pregnant prior to therapy with ZULRESSO. Advise pregnant women and females of reproductive potential of the potential risk to a fetus. Advise patients that there is a pregnancy exposure registry that monitors pregnancy outcomes in women exposed to ZULRESSO during pregnancy [see *Use in Specific Populations (8.1)*].

Manufactured for:

Sage Therapeutics, Inc.,

Cambridge, MA 02142 USA

ZULRESSO, the ZULRESSO logo, SAGE THERAPEUTICS, and the SAGE THERAPEUTICS logo are registered trademarks of Sage Therapeutics, Inc. All other trademarks referenced herein are the properties of their respective owners.

v4.0

MEDICATION GUIDE

ZULRESSO® (zul reh' soe)

(brexanolone)

Injection, for intravenous use, CIV

What is the most important information I should know about ZULRESSO?
ZULRESSO can cause serious side effects, including:

- **Excessive sedation and sudden loss of consciousness.** ZULRESSO may cause you to feel very sleepy (excessive sedation) or pass out (loss of consciousness). Your healthcare provider should check you for symptoms of excessive sleepiness every 2 hours while you are awake.
 - During your ZULRESSO infusion, tell your healthcare provider right away if you feel like you cannot stay awake during the time you are normally awake or if you feel like you are going to pass out. Your healthcare provider may lower your dose or stop the infusion until your symptoms go away.
 - You must have a caregiver or family member with you to help care for your child(ren) during your ZULRESSO infusion.
- Because of the risk of serious harm resulting from excessive sedation or sudden loss of consciousness, ZULRESSO is only available through a restricted program called the ZULRESSO REMS.

What is ZULRESSO?

ZULRESSO is a prescription medicine used to treat a certain type of depression called Postpartum Depression in individuals 15 years and older.

It is not known if ZULRESSO is safe and effective in individuals less than 15 years of age.

Before receiving ZULRESSO, tell your healthcare provider about all your medical conditions, including if you:

- drink alcohol
- have kidney problems
- are pregnant or think you may be pregnant. It is not known if ZULRESSO will harm your unborn baby.
 - There is a pregnancy registry for women who are exposed to ZULRESSO during pregnancy. The purpose of the registry is to collect information about the health of women exposed to ZULRESSO and their baby. If you become pregnant during treatment with ZULRESSO, talk to your healthcare provider about registering with the National Pregnancy Registry for Antidepressants at 1-844-405-6185 or visit <https://womensmentalhealth.org/clinical-and-research-programs/pregnancyregistry/antidepressants/>.
- are breastfeeding or plan to breastfeed. ZULRESSO passes into breast milk. Talk to your healthcare provider about the risks and benefits of breastfeeding and about the best way to feed your baby while receiving ZULRESSO.

Tell your healthcare provider about all the medicines you take, including prescription and over-the-counter medicines, vitamins, and herbal supplements. ZULRESSO and some medicines may interact with each other and cause serious side effects.

Especially tell your healthcare provider if you take:

- other antidepressants
- opioids
- CNS depressants such as benzodiazepines

Know the medicines you take. Keep a list of them to show your healthcare provider and pharmacist when you get a new medicine. Your healthcare provider will decide if other medicines can be taken with ZULRESSO.

How will I receive ZULRESSO?

- ZULRESSO is given to you by continuous intravenous (IV) infusion into your vein. Your ZULRESSO infusion will last for a total of 60 hours (2.5 days).

What should I avoid while receiving ZULRESSO?

- ZULRESSO may make you feel dizzy and sleepy. Do not drive a car or do other

dangerous activities after your ZULRESSO infusion until your feeling of sleepiness has completely gone away. See "**What is the most important information I should know about ZULRESSO?**"

- Do not drink alcohol while receiving ZULRESSO.

What are the possible side effects of ZULRESSO?

ZULRESSO can cause serious side effects, including:

- See "**What is the most important information I should know about ZULRESSO?**"
- **Increased risk of suicidal thoughts or actions.** ZULRESSO and other antidepressant medicines may increase suicidal thoughts and actions in some people 24 years of age and younger. Depression or other serious mental illnesses are the most important causes of suicidal thoughts or actions.

How can I watch for and try to prevent suicidal thoughts and actions?

- Pay close attention to any changes, especially sudden changes in mood, behavior, thoughts, or feelings, or if you develop suicidal thoughts or actions.
- Tell your healthcare provider right away if you have any new or sudden changes in mood, behavior, thoughts, or feelings.
- Keep all follow-up visits with your healthcare provider as scheduled. Call your healthcare provider between visits as needed, especially if you have concerns about symptoms.

Tell your healthcare provider right away if you have any of the following symptoms, especially if they are new, worse, or worry you:

- attempts to commit suicide
- thoughts about suicide or dying
- new or worse depression
- other unusual changes in behavior or mood

The most common side effects of ZULRESSO include:

- sleepiness
- dry mouth
- passing out
- flushing of the skin or face

These are not all the side effects of ZULRESSO.

Call your doctor for medical advice about side effects. You may report side effects to FDA at 1-800-FDA-1088.

General information about ZULRESSO.

Medicines are sometimes prescribed for purposes other than those listed in a Medication Guide. You can ask your healthcare provider for information about ZULRESSO that is written for health professionals.

What are the ingredients in ZULRESSO?

Active ingredient: brexanolone

Inactive ingredients: betadex sulfobutyl ether sodium, citric acid monohydrate, sodium citrate dihydrate, and water for injection. Hydrochloric acid or sodium hydroxide may be added during manufacturing to adjust pH.

Manufactured for:

Sage Therapeutics, Inc.,

Cambridge, MA 02142

ZULRESSO, the ZULRESSO logo, SAGE THERAPEUTICS, and the SAGE THERAPEUTICS logo are registered trademarks of Sage Therapeutics, Inc. All other trademarks referenced herein are the properties of their respective owners.

For more information about ZULRESSO go to www.zulresso.com or call 844-472-4379.

This Medication Guide has been approved by the U.S. Food and

Revised: 6/2022

PRINCIPAL DISPLAY PANEL - 20 mL Vial Label

NDC 72152-547-20

Rx ONLY

20 mL

Zulresso®
(brexanolone) injection

100 mg/20 mL
(5 mg/mL)

CIV

FOR INTRAVENOUS INFUSION
AFTER DILUTION.

NDC 72152-547-20		Rx ONLY	Single-dose vial
20 mL		STORAGE: Refrigerate at 2° to 8°C (36° to 46°F). DO NOT FREEZE.	 8 72152 54720 3
Zulresso® (brexanolone) injection		STORE PROTECTED FROM LIGHT. Discard unused portion.	
100 mg/20 mL (5 mg/mL)		DOSAGE & ADMINISTRATION: See Full Prescribing Information.	
FOR INTRAVENOUS INFUSION AFTER DILUTION.		Manufactured for: Sage Therapeutics, Inc., Cambridge, MA 02142	
			LOT X123456 EXP MMMYYY
		54701-5	

PRINCIPAL DISPLAY PANEL - 20 mL Vial Carton

Rx ONLY

NDC 72152-547-20

20 mL

Zulresso®
(brexanolone) injection

100 mg/20 mL
(5 mg/mL)

CIV

FOR INTRAVENOUS INFUSION
AFTER DILUTION

Dispense the accompanying
Medication Guide to each patient.



Rx ONLY

NDC 72152-547-20

Zulresso[®] (brexanolone) injection **IV**

20 mL

Zulresso[®] (brexanolone) injection

100 mg/20 mL (5 mg/mL) **IV**

FOR INTRAVENOUS INFUSION AFTER DILUTION

Dispense the accompanying Medication Guide to each patient.

Discard unused portion.

STORAGE: Refrigerate at 2° to 8°C (36° to 46°F). **DO NOT FREEZE.** **STORE PROTECTED FROM LIGHT.**

Each mL of solution contains 5 mg of brexanolone, 250 mg of betadex sulfobutyl ether sodium, 0.265 mg of citric acid monohydrate, 2.57 mg of sodium citrate dihydrate, and water for injection. Hydrochloric acid or sodium hydroxide may be used during manufacturing to adjust pH.

DOSAGE & ADMINISTRATION: See Full Prescribing Information.

1 single-dose vial

Manufactured for:
Sage Therapeutics, Inc.,
Cambridge, MA 02142



IV 100 mg/20 mL (5 mg/mL)

Zulresso[®] (brexanolone) injection

20 mL

NDC 72152-547-20

Rx ONLY

Rx ONLY

NDC 72152-547-20

Zulresso[®] **IV**



ZULRESSO

brexanolone injection, solution

Product Information

Product Type	HUMAN PRESCRIPTION DRUG	Item Code (Source)	NDC:72152-547
Route of Administration	INTRAVENOUS	DEA Schedule	CIV

Active Ingredient/Active Moiety

Ingredient Name	Basis of Strength	Strength
BREXANOLONE (UNII: S39XZ5QV8Y) (BREXANOLONE - UNII:S39XZ5QV8Y)	BREXANOLONE	5 mg in 1 mL

Inactive Ingredients

Ingredient Name	Strength
-----------------	----------

BETADEX SULFOBUTYL ETHER SODIUM (UNII: 2PP9364507)	250 mg in 1 mL
CITRIC ACID MONOHYDRATE (UNII: 2968PHW8QP)	0.265 mg in 1 mL
TRISODIUM CITRATE DIHYDRATE (UNII: B22547B95K)	2.57 mg in 1 mL

Packaging

#	Item Code	Package Description	Marketing Start Date	Marketing End Date
1	NDC:72152-547-20	1 in 1 CARTON	06/17/2019	
1		20 mL in 1 VIAL, SINGLE-DOSE; Type 0: Not a Combination Product		

Marketing Information

Marketing Category	Application Number or Monograph Citation	Marketing Start Date	Marketing End Date
NDA	NDA211371	06/17/2019	

Labeler - Sage Therapeutics, Inc. (968164959)

Registrant - Ash Stevens LLC (049265333)

Establishment

Name	Address	ID/FEI	Business Operations
Alcami Carolinas Corporation		832394733	MANUFACTURE(72152-547)

Revised: 7/2024

Sage Therapeutics, Inc.