

# **CYCLOSET- bromocriptine mesylate tablet**

## **Santarus, Inc.**

-----

### **HIGHLIGHTS OF PRESCRIBING INFORMATION**

**These highlights do not include all the information needed to use CYCLOSET safely and effectively. See full prescribing information for CYCLOSET.**

**CYCLOSET® (bromocriptine mesylate tablets), for oral use**  
**Initial U.S. Approval: 1978**

### **-----RECENT MAJOR CHANGES-----**

Warnings and Precautions ( 5.3)

04/2020

Warnings and Precautions ( 5.7)

08/2020

### **-----INDICATIONS AND USAGE-----**

CYCLOSET is an ergot derivative indicated as an adjunct to diet and exercise to improve glycemic control in adults with type 2 diabetes mellitus. ( 1)

Limitations of Use:

- Should not be used to treat type 1 diabetes or diabetic ketoacidosis. ( 1)
- Limited efficacy data in combination with thiazolidinediones. ( 1)
- Efficacy has not been confirmed in combination with insulin. ( 1)

### **-----DOSAGE AND ADMINISTRATION-----**

- Taken within two hours after waking in the morning with food ( 2.1)
- Initial dose is one tablet (0.8 mg) daily increased weekly by one tablet until maximal tolerated daily dose of 1.6 to 4.8 mg is achieved. ( 2.2)
- Limit dose to 1.6 mg daily during concomitant use of a moderate CYP3A4 inhibitor. Avoid concomitant use with strong CYP3A4 inhibitors. ( 2.3)

### **-----DOSAGE FORMS AND STRENGTHS-----**

Tablets: 0.8 mg ( 3)

### **-----CONTRAINDICATIONS-----**

- Hypersensitivity to ergot-related drugs, bromocriptine or to any of the excipients in CYCLOSET. ( 4)
- History of syncopal migraines. ( 4)
- Postpartum patients ( 4,5.7)
- Lactating patients ( 4, 8.2)

### **-----WARNINGS AND PRECAUTIONS-----**

- Hypotension: Can cause orthostatic hypotension and syncope, particularly upon initiation or dose escalation. Use caution in patients taking antihypertensive medications. Assess orthostatic vital signs prior to initiation of CYCLOSET and periodically thereafter. Advise patients during early treatment to avoid situations that could lead to injury if syncope was to occur. ( 5.1, 6.1)
- Psychosis: May exacerbate psychotic disorders or reduce the effectiveness of drugs that treat psychosis. Use in patients with severe psychotic disorders is not recommended. ( 5.2)
- Impulse control/compulsive behaviors: Ask patients or their caregivers about new or increased gambling urges, sexual urges, uncontrolled spending, or other urges while being treated with CYCLOSET. Consider dose reduction or stopping CYCLOSET if a patient develops such urges. Use of CYCLOSET in patients with impulse control/compulsive behaviors is not recommended. ( 5.3, 6.2).
- Somnolence: May cause somnolence. Advise patients not to operate heavy machinery if symptoms of somnolence occur. ( 5.4)
- Interaction with dopamine antagonists: Concomitant use with dopamine antagonists such as neuroleptic agents may diminish the effectiveness of both drugs. Concomitant use is not recommended. ( 5.5, 7)
- Other dopamine receptor agonists: Effectiveness and safety are unknown in patients already taking dopamine receptor agonists for other indications. Concomitant use is not recommended. ( 5.6)
- Risks in Postpartum Patients: Serious and life-threatening adverse reactions have been reported. ( 5.7,

---

**ADVERSE REACTIONS**


---

In controlled clinical trials, adverse reactions reported in  $\geq 5\%$  of patients treated with CYCLOSET and reported more commonly than in patients treated with placebo, included nausea, fatigue, dizziness, vomiting, and headache. ( 6.1)

Postmarketing reports with higher doses of bromocriptine used for other indications include psychotic disorders, hallucinations, and fibrotic complications. ( 6.2)

**To report SUSPECTED ADVERSE REACTIONS, contact VeroScience, LLC at 1-800-321-4576 or FDA at 1-800-FDA-1088 or [www.fda.gov/medwatch](http://www.fda.gov/medwatch).**

---

**DRUG INTERACTIONS**


---

- May increase the unbound fraction of highly protein-bound therapies, altering their effectiveness and safety profiles. ( 7)
- May increase ergot-related side effects or reduce ergot effectiveness for migraines if co-administered within 6 hours of ergot-related drugs. ( 7)
- Extensively metabolized by CYP3A4. Limit CYCLOSET dose to 1.6 mg/day during concomitant use of moderate CYP3A4 inhibitors. Avoid concomitant use of CYCLOSET with strong CYP3A4 inhibitors. ( 2.3, 7)

---

**USE IN SPECIFIC POPULATIONS**


---

Pediatrics: Safety and effectiveness have not been established. ( 8.4)

**See 17 for PATIENT COUNSELING INFORMATION and FDA-approved patient labeling.**

**Revised: 8/2020**

---

**FULL PRESCRIBING INFORMATION: CONTENTS\***
**1 INDICATIONS AND USAGE**
**2 DOSAGE AND ADMINISTRATION**

2.1 Recommended Dosing

2.2 Titration

2.3 Use with Concomitant Therapy

**3 DOSAGE FORMS AND STRENGTHS**
**4 CONTRAINDICATIONS**
**5 WARNINGS AND PRECAUTIONS**

5.1 Hypotension

5.2 Psychotic Disorders

5.3 Impulse Control/Compulsive Behaviors

5.4 Somnolence

5.5 Interaction with Dopamine Receptor Antagonists

5.6 Other Dopamine Receptor Agonists

5.7 Risks in Postpartum Patients

**6 ADVERSE REACTIONS**

6.1 Clinical Trials Experience

6.2 Postmarketing Experience

**7 DRUG INTERACTIONS**
**8 USE IN SPECIFIC POPULATIONS**

8.1 Pregnancy

8.2 Lactation

8.4 Pediatric Use

8.5 Geriatric Use

**10 OVERDOSAGE**

## **11 DESCRIPTION**

## **12 CLINICAL PHARMACOLOGY**

12.1 Mechanism of Action

12.2 Pharmacodynamics

12.3 Pharmacokinetics

## **13 NONCLINICAL TOXICOLOGY**

13.1 Carcinogenesis, Mutagenesis, Impairment of Fertility

## **14 CLINICAL STUDIES**

14.1 Monotherapy

14.2 Combination Therapy

14.3 Changes in Lipids and Blood Pressure

## **16 HOW SUPPLIED/STORAGE AND HANDLING**

## **17 PATIENT COUNSELING INFORMATION**

\* Sections or subsections omitted from the full prescribing information are not listed.

---

## **FULL PRESCRIBING INFORMATION**

### **1 INDICATIONS AND USAGE**

CYCLOSET is indicated as an adjunct to diet and exercise to improve glycemic control in adults with type 2 diabetes mellitus.

#### Limitations of Use

- CYCLOSET should not be used to treat type 1 diabetes or diabetic ketoacidosis.
- Limited efficacy data in combination with thiazolidinediones.
- Efficacy has not been confirmed in combination with insulin.

### **2 DOSAGE AND ADMINISTRATION**

#### **2.1 Recommended Dosing**

The recommended dose of CYCLOSET is 1.6 mg to 4.8 mg administered once daily within two hours after waking in the morning. CYCLOSET should be taken with food to potentially reduce gastrointestinal side effects such as nausea. If the morning dose is missed, instruct patients to take their usual dose the following morning. Doses of CYCLOSET should not be doubled the following morning.

#### **2.2 Titration**

CYCLOSET should be initiated at one tablet (0.8 mg) and increased by one tablet per week until a maximum daily dose of 6 tablets (4.8 mg) or until the maximal tolerated number of tablets between 2 and 6 per day is reached.

#### **2.3 Use with Concomitant Therapy**

CYCLOSET dose should not exceed 1.6 mg once daily during concomitant use of a moderate CYP3A4 inhibitor (e.g., erythromycin). Avoid concomitant use of CYCLOSET

and strong CYP3A4 inhibitors (e.g., azole antimycotics, HIV protease inhibitors) and ensure adequate washout of the strong CYP3A4 inhibitor drug before initiating CYCLOSET treatment [see *Drug Interactions (7)*, *Clinical Pharmacology (12.3)*] .

### **3 DOSAGE FORMS AND STRENGTHS**

0.8 mg tablets are white and round, imprinted with "C" on one side and "9" on the other.

### **4 CONTRAINDICATIONS**

CYCLOSET is contraindicated in:

- Patients with known hypersensitivity to bromocriptine, ergot-related drugs, or any of the excipients in CYCLOSET.
- Patients with syncopal migraine. Bromocriptine increases the likelihood of a hypotensive episode among patients with syncopal migraine. Loss of consciousness during a migraine may reflect dopamine receptor hypersensitivity. CYCLOSET is a dopamine receptor agonist and may, therefore, potentiate the risk for syncope in these patients.
- Postpartum patients. Serious and life-threatening adverse reactions have been reported with bromocriptine use in this population [see *Warnings and Precautions (5.7)*, *Adverse Reactions (6.2)*] .
- Lactating patients. CYCLOSET contains bromocriptine which inhibits lactation [see *Use in Specific Populations (8.2)*] .

### **5 WARNINGS AND PRECAUTIONS**

#### **5.1 Hypotension**

Hypotension, including orthostatic hypotension, can occur, particularly upon initiation of CYCLOSET therapy and with dose escalation. In a 52-week, randomized clinical trial of 3070 patients, hypotension was reported in 2.2% of patients randomized to CYCLOSET compared to 0.8% of patients randomized to placebo. Among CYCLOSET-treated patients reporting symptomatic hypotension, 98% were on at least one blood pressure medication compared to 73% on such medication in the total study population. In this trial, six CYCLOSET-treated patients (0.3%) reported orthostatic hypotension compared to 2 (0.2%) placebo-treated patients. All six patients were taking antihypertensive medications. Hypotension can result in syncope. In this trial, syncope due to any cause was reported in 1.6% of CYCLOSET-treated patients and 0.7% of placebo-treated patients [see *Adverse Reactions (6.1)*] . As a precaution, assessment of orthostatic vital signs is recommended prior to initiation of CYCLOSET and periodically thereafter. Advise patients during early treatment with CYCLOSET to make slow postural changes and to avoid situations that could lead to serious injury if syncope was to occur. Use caution in patients taking antihypertensive medications.

#### **5.2 Psychotic Disorders**

In patients with severe psychotic disorders, treatment with a dopamine receptor agonist such as CYCLOSET may exacerbate the disorder or may diminish the effectiveness of drugs used to treat the disorder. Therefore, the use of CYCLOSET in patients with

severe psychotic disorders is not recommended.

### **5.3 Impulse Control/Compulsive Behaviors**

There have been reports of patients experiencing intense urges to gamble, increased sexual urges, intense urges to spend money uncontrollably, and/or other intense urges, and the inability to control these urges while taking one or more of the medications, including bromocriptine, that increase central dopaminergic tone. In some cases, although not all, these urges were reported to have stopped when the dose was reduced, or the medication was discontinued. Because patients may not recognize these behaviors as abnormal, it is important to specifically ask patients or their caregivers about the development of new or increased gambling urges, sexual urges, uncontrolled spending, or other urges while being treated with CYCLOSET. Consider dose reduction or discontinuation if a patient develops such urges.

### **5.4 Somnolence**

CYCLOSET may cause somnolence. In a 52-week, randomized clinical trial, 4.3% of CYCLOSET-treated patients and 1.3% of placebo-treated patients reported somnolence. None of these events were reported as serious, and the majority of patients reported resolution of somnolence over time. Inform patients of the risk of somnolence, particularly when initiating therapy with CYCLOSET. Patients experiencing somnolence should refrain from driving or operating heavy machinery.

### **5.5 Interaction with Dopamine Receptor Antagonists**

Dopamine receptor antagonists, including neuroleptic agents that have dopamine D2 receptor antagonist properties (e.g., clozapine, olanzapine, ziprasidone), may reduce the effectiveness of CYCLOSET, and CYCLOSET may reduce the effectiveness of these agents. CYCLOSET has not been studied in patients taking neuroleptic drugs. The concomitant use of CYCLOSET and dopamine receptor antagonists, including neuroleptic drugs, is not recommended.

### **5.6 Other Dopamine Receptor Agonists**

Other dopamine receptor agonists are indicated for the treatment of Parkinson's disease, hyperprolactinemia, restless leg syndrome, acromegaly, and other disorders. The effectiveness and safety of CYCLOSET in patients who are already taking one of these other dopamine receptor agonists is unknown. Concomitant use is not recommended.

### **5.7 Risks in Postpartum Patients**

CYCLOSET is contraindicated in postpartum patients. Serious and life-threatening adverse reactions including hypertension, myocardial infarction, seizures, stroke and psychosis have been reported postmarketing in postpartum women who were administered bromocriptine for inhibition of lactation [see *Adverse Reactions (6.2)*]. These risks may be higher in postpartum patients with cardiovascular disease. The indication for use of bromocriptine for inhibition of postpartum lactation was withdrawn from bromocriptine-containing products and is not approved for CYCLOSET.

## **6 ADVERSE REACTIONS**

The following clinically significant adverse reactions are described elsewhere in the labeling:

- Hypotension [see *Warnings and Precautions (5.1)*]
- Psychotic Disorders [see *Warnings and Precautions (5.2)*]
- Somnolence [see *Warnings and Precautions (5.4)*]
- Risks in Postpartum Women [see *Warnings and Precautions (5.7)*]

## 6.1 Clinical Trials Experience

Because clinical trials are conducted under widely varying conditions, the adverse reaction rates reported in one clinical trial may not be easily compared to those rates reported in another clinical trial and may not reflect the rates actually observed in clinical practice.

The CYCLOSET safety trial was a 52-week, placebo-controlled study. A total of 3,070 patients were randomized to CYCLOSET (titrated to 1.6 to 4.8 mg daily, as tolerated) or placebo. The study population had a mean baseline age of 60 years (range 27-80) and 33% were 65 years of age or older. Approximately 43% of the patients were female, 68% were Caucasian, 17% were Black, 13% were Hispanic, and 1% were Asian. The mean baseline body mass index was 32 kg/m<sup>2</sup>. The mean duration of diabetes at baseline was 8 years, and the mean baseline HbA1c was 7.0% with a mean baseline fasting plasma glucose of 142 mg/dL. At baseline, 12% of patients were treated with diet only, 40% were treated with one oral antidiabetic agent, 33% were treated with two oral antidiabetic agents, and 16% were treated with insulin alone or insulin in combination with an oral antidiabetic agent. At baseline, 76% of patients reported a history of hypercholesterolemia, 75% reported a history of hypertension, 11% reported a history of revascularization surgery, 10% reported a history of myocardial infarction, 10% reported a history of angina, and 5% reported a history of stroke. Forty-seven percent of the CYCLOSET-treated patients and 32% of the placebo-treated patients prematurely discontinued treatment.

Table 1 summarizes the adverse reactions reported in ≥5% of patients treated with CYCLOSET in clinical trials regardless of investigator assessment of causality. The most commonly reported adverse reactions (nausea, fatigue, vomiting, headache, dizziness) lasted a median of 14 days and were more likely to occur during the initial titration of CYCLOSET. There were no differences in the pattern of common adverse reactions across race groups or age groups (<65 years old vs. >65 years old). In the 52-week CYCLOSET safety trial, 11.5% of CYCLOSET-treated women compared to 3.6% of placebo-treated women reported vomiting. In this same trial, 5.4% of CYCLOSET-treated men compared to 2.8% of placebo-treated men reported vomiting.

**Table 1: Adverse Reactions Occurring in ≥5% in CYCLOSET-Treated Patients and More Frequent than in Placebo in CYCLOSET Clinical Trials \***

Monotherapy	CYCLOSET 1.6 mg - 4.8 mg N (%)	Placebo N (%)
N = 159	N = 80	N = 79
Nausea	26 (32.5)	6 (7.6)

Rhinitis	11 (13.8)	3 (3.8)
Headache	10 (12.5)	7 (8.9)
Asthenia	10 (12.5)	5 (6.3)
Dizziness	10 (12.5)	6 (7.6)
Constipation	9 (11.3)	3 (3.8)
Sinusitis	8 (10.0)	2 (2.5)
Diarrhea	7 (8.8)	4 (5.1)
Amblyopia	6 (7.5)	1 (1.3)
Dyspepsia	6 (7.5)	2 (2.5)
Vomiting	5 (6.3)	1 (1.3)
Infection	5 (6.3)	4 (5.1)
Anorexia	4 (5.0)	1 (1.3)
<b>Adjunct to Sulfonylurea (2 pooled 24-week studies)</b>		
	N = 494	N = 244
		N = 250
Nausea	62 (25.4)	12 (4.8)
Asthenia	46 (18.9)	20 (8.0)
Headache	41 (16.8)	40 (16.0)
Flu syndrome	23 (9.4)	19 (7.6)
Constipation	24 (9.8)	11 (4.4)
Cold	20 (8.2)	20 (8.0)
Dizziness	29 (11.9)	14 (5.6)
Rhinitis	26 (10.7)	12 (4.8)
Sinusitis	18 (7.4)	16 (6.4)
Somnolence	16 (6.6)	5 (2.0)
Vomiting	13 (5.3)	8 (3.2)
Amblyopia	13 (5.3)	6 (2.4)
<b>52-Week Safety Trial<sup>†</sup></b>		
	N = 3070	N = 2054
		N = 1016
Nausea	661 (32.2)	77 (7.6)
Dizziness	303 (14.8)	93 (9.2)
Fatigue	285 (13.9)	68 (6.7)
Headache	235 (11.4)	84 (8.3)
Vomiting	167 (8.1)	32 (3.1)
Diarrhea	167 (8.1)	81 (8.0)
Constipation	119 (5.8)	52 (5.1)

\* All randomized subjects receiving at least one dose of study drug

† The Safety Trial enrolled patients treated with diet or no more than 2 antidiabetic medications (metformin, insulin secretagogues such as a sulfonylurea, thiazolidinediones, alpha glucosidase inhibitors, and/or insulin).

### *Hypoglycemia*

In the monotherapy trial, hypoglycemia, a blood glucose level of less than 60 mg/dL, was reported in 2 CYCLOSET-treated patients (3.7%) and 1 placebo-treated patient (1.3%). In the add-on to sulfonylurea trials, the incidence of hypoglycemia was 8.6% among the CYCLOSET-treated patients and 5.2% among the placebo-treated patients. In the CYCLOSET safety trial, hypoglycemia was defined as any of the following: 1) symptoms

suggestive of hypoglycemia that promptly resolved with appropriate intervention, 2) symptoms with a measured glucose <60 mg/dL or 3) measured glucose below 49 mg/dL regardless of symptoms. In the 52-week safety trial, the incidence of hypoglycemia was 6.9% among the CYCLOSET-treated patients and 5.3% among the placebo-treated patients. In the safety trial, severe hypoglycemia was defined as an inability to self-treat neurological symptoms consistent with hypoglycemia that occurred in the setting of a measured blood glucose <50 mg/dL (or evidence of prompt resolution of these symptoms with administration of oral carbohydrates, subcutaneous glucagon, or intravenous glucose if blood glucose was not measured). In this trial, severe hypoglycemia was reported among 0.5% of CYCLOSET-treated patients and 1% of placebo-treated patients.

### Syncope

In clinical trials, syncope was reported in 1.4% of the 2,500 CYCLOSET-treated patients and 0.6% of the 1,454 placebo-treated patients. Among the 3,070 patients studied in the 52-week safety trial, 33 CYCLOSET-treated patients (1.6%) and 7 placebo-treated patients (0.7%) reported syncope. In this trial, electrocardiograms were not available at the time of these events, but an assessment of routine electrocardiograms obtained during the course of the trial did not identify arrhythmias or QTc interval prolongation among the CYCLOSET-treated patients reporting syncope.

### Central Nervous System

In the 52-week safety trial, somnolence and hypoesthesia were the only adverse reactions within the nervous system organ class that were reported at a rate of <5% and ≥1% and that occurred at a numerically greater frequency among CYCLOSET-treated patients (CYCLOSET 4.3% vs. placebo 1.3% for somnolence; CYCLOSET 1.4% vs. placebo 1.1% for hypoesthesia).

### Fibrotic-Related Complications

Among the CYCLOSET-treated patients (n = 2500) in controlled clinical trials, there was one case (0.04% event rate) of an adverse reaction of pulmonary fibrosis.

### Serious Adverse Reactions and Cardiovascular Safety

The primary endpoint of the 52-week safety trial was the occurrence of all serious adverse reactions. A secondary endpoint was the occurrence of the composite of myocardial infarction, stroke, coronary revascularization, hospitalization for angina, and hospitalization for congestive heart failure.

All serious adverse reactions and cardiovascular endpoints were adjudicated by an independent event adjudication committee. Serious adverse reactions occurred in 176/2054 (8.5%) CYCLOSET-treated patients and 98/1016 (9.6%) placebo-treated patients. The hazard ratio comparing CYCLOSET to placebo for the time to first occurrence of a serious adverse reaction was 1.02 (upper bound of one-sided 96% confidence interval, 1.27). None of the serious adverse reactions grouped by System-Organ-Class occurred more than 0.3 percentage points higher with CYCLOSET than with placebo. The composite cardiovascular endpoint occurred in 31 (1.5%) CYCLOSET-treated patients and 30 (3.0%) placebo-treated patients. The hazard ratio comparing CYCLOSET to placebo for the time-to-first occurrence of the prespecified composite cardiovascular endpoint was 0.58 (two-sided 95% confidence interval, 0.35 - 0.96). Therefore, the incidence of this composite endpoint was not increased with CYCLOSET



relative to placebo.

## **6.2 Postmarketing Experience**

The following adverse reactions have been identified during post approval use of other formulations of bromocriptine mesylate for indications for which CYCLOSET is not approved (e.g., hyperprolactinemia, acromegaly, and Parkinson's disease), generally at doses higher than those approved for the treatment of type 2 diabetes. Because these reactions are reported voluntarily from a population of uncertain size, it is generally not possible to reliably estimate their frequency or establish a causal relationship to drug exposure.

### Hallucinations

Hallucinations and mental confusion including delusions have been reported with bromocriptine.

### Fibrotic-Related Complications

Fibrotic complications, including cases of retroperitoneal fibrosis, pulmonary fibrosis, pleural effusion, pleural thickening, pericarditis and pericardial effusions have been reported. These complications do not always resolve when bromocriptine is discontinued. Among several studies investigating a possible relation between bromocriptine exposure and cardiac valvulopathy, some events of cardiac valvulopathy have been reported, but no definitive association between bromocriptine mesylate use and clinically significant (moderate to severe) cardiac valvulopathy could be concluded.

### Psychotic and Psychiatric Disorders

Psychotic disorders and impulse control/compulsive behaviors (including pathological gambling) have been reported with bromocriptine.

### Adverse Reactions in Postpartum Patients

Serious and life-threatening adverse reactions including hypertension, myocardial infarction, seizures, stroke and psychosis have been reported in postpartum women who were administered bromocriptine for inhibition of lactation.

### Neuroleptic-Like Malignant Syndrome

A neuroleptic-like malignant syndrome (manifested by high fever and increase in creatinine phosphokinase) has been reported upon cessation of bromocriptine treatment in patients with advanced Parkinson's disease or patients with secondary Parkinsonism.

## **7 DRUG INTERACTIONS**

- The active ingredient in CYCLOSET (bromocriptine mesylate) is highly bound to serum proteins. Therefore, CYCLOSET may increase the unbound fraction of other concomitantly used highly protein-bound therapies (e.g., salicylates, sulfonamides, chloramphenicol and probenecid), which may alter their effectiveness and risk for side effects.
- CYCLOSET is a dopamine receptor agonist. Concomitant use of dopamine receptor antagonists, such as neuroleptics (e.g., phenothiazines, butyrophenones, thioxanthenes), or metoclopramide may diminish the effectiveness of CYCLOSET, and

CYCLOSET may diminish the effectiveness of these other therapies. The concurrent use of CYCLOSET with these agents has not been studied in clinical trials and is not recommended [see *Warnings and Precautions (5.5)*].

- CYCLOSET in combination with ergot-related drugs may cause an increase in the occurrence of ergot-related side effects, such as nausea, vomiting, and fatigue, and may also reduce the effectiveness of these ergot therapies when used to treat migraine. The concurrent use of these ergot agents within 6 hours of CYCLOSET dosing is not recommended.
- CYCLOSET is extensively metabolized by the liver via CYP3A4. Therefore, potent inhibitors or inducers of CYP3A4 may increase or reduce the circulating levels of CYCLOSET, respectively. Use caution when co-administering drugs that are inhibitors or inducers of CYP3A4. CYCLOSET dose should not exceed 1.6 mg once daily during concomitant use of a moderate CYP3A4 inhibitor (e.g., erythromycin). Concomitant use of strong CYP3A4 inhibitors (e.g., azole antimycotics, HIV protease inhibitors) with CYCLOSET should be avoided. Ensure adequate washout of the strong CYP3A4 inhibitor drug before initiating CYCLOSET treatment [see *Clinical Pharmacology (12.3)*].
- There are postmarketing reports of hypertension and tachycardia when bromocriptine was co-administered with sympathomimetic drugs (e.g., phenylpropanolamine and isometheptene) in postpartum women. There are limited clinical trial data supporting the safety of co-administering sympathomimetic drugs and CYCLOSET for more than 10 days. Therefore, concomitant use of these agents with CYCLOSET for more than 10 days duration is not recommended. Also, there are limited clinical trial data supporting the safety of selective 5-hydroxytryptamine<sub>1B</sub>(5-HT<sub>1B</sub>) agonists (e.g., sumatriptan) used concurrently with CYCLOSET, and the concomitant use of these agents with CYCLOSET should be avoided.

## 8 USE IN SPECIFIC POPULATIONS

### 8.1 Pregnancy

#### Risk Summary

There are no available data on CYCLOSET use in pregnant women with type 2 diabetes. However, prolonged experience with bromocriptine use in pregnant women for other indications over several decades, based on data from published clinical trials, case reports, and epidemiological studies, have not established a drug-associated risk for major birth defects, miscarriage, or adverse maternal or fetal outcomes. Furthermore, only a trace amount of bromocriptine was shown to be transported across the placenta *in vitro* in a published *ex vivo* human placental perfusion model. There are risks to the mother and fetus associated with poorly controlled diabetes in pregnancy (see *Clinical Considerations*). In animal reproduction studies in which bromocriptine mesylate was administered orally during the period of organogenesis, increased prenatal mortality occurred in rats and rabbits at maternally toxic dosages that were more than 24-times the human dose of 4.8 mg/day based on body surface area. No adverse developmental outcomes were observed in monkeys administered bromocriptine mesylate orally during various periods of gestation at doses up to 10-times a human dose of 4.8 mg daily (see *Data*).

The estimated background risk of major birth defects is 6-10% in women with pre-

gestational diabetes with an HbA1c >7 and has been reported to be as high as 20-25% in women with an HbA1c >10. The estimated background risk of miscarriage for the indicated population is unknown. In the U.S. general population, the estimated background risk of major birth defects and miscarriage in clinically recognized pregnancies is 2-4% and 15-20%, respectively.

### Clinical Considerations

#### *Disease-Associated Maternal and/or Embryo/Fetal Risk*

Poorly controlled diabetes in pregnancy increases the maternal risk for diabetic ketoacidosis, pre-eclampsia, spontaneous abortions, preterm delivery, and delivery complications. Poorly controlled diabetes increases the fetal risk for major birth defects, stillbirth, and macrosomia related morbidity.

### Data

#### *Human Data*

While available studies cannot definitively establish the absence of risk, data from published studies have not established an association with bromocriptine use during pregnancy and major birth defects, miscarriage, or adverse maternal or fetal outcomes. Available epidemiological studies have methodological limitations including small sample size and inconsistent comparator groups.

#### *Animal Data*

Two strains of pregnant rats were dosed orally with 3, 10, and 30 mg/kg/day from Gestation Day (GD) 6-15 and with a single dose of 10 mg/kg on GD 5. Implantation was inhibited at 10 and 30 mg/kg (24 and 72 times the human 4.8 mg daily dose, based on mg/m<sup>2</sup> comparison). When rats were dosed with 3, 10, and 30 mg/kg/day from GD 8-15 there was an increase in resorptions at ≥10 mg/kg. These effects were probably due to the dependence of implantation and maintenance of gestation upon prolactin in the rat and are not clinically relevant as these events in humans are dependent upon luteinizing hormone. There were no drug-related malformations in the rat.

In two strains of pregnant rabbits treated from GD 6-18 with oral doses of 3, 10, 30, 100, and 300 mg/kg/day, there was maternal toxicity and embryoletality (post-implantation loss/early resorptions) at doses ≥10 mg/kg/day (≥48 times the human 4.8 mg daily dose, based on mg/m<sup>2</sup> comparison) and a low incidences of fetal abnormalities at maternally toxic doses ≥ 100 mg/kg/day (≥480 times the human 4.8 mg daily dose, based on mg/m<sup>2</sup> comparison). There were no treatment-related fetal malformations at doses ≤30 mg/kg/day (140 times the human 4.8 mg daily dose, based on mg/m<sup>2</sup> comparison). Implantation was not affected in rabbits treated from GD 1-6 with oral doses of 100-300 mg/kg/day (480-1400 times the human 4.8 mg daily dose, based on mg/m<sup>2</sup> comparison).

In a small study in macaque monkeys given oral doses of 2 mg/kg/day (10 times the human 4.8 mg daily dose, based on mg/m<sup>2</sup> comparison) during organogenesis, no embryotoxic or teratologic effects were observed.

In developmental toxicity studies in monkeys, an oral dose of 0.3 mg/kg administered prior to pregnancy and through GD 30 or 80, or an oral dose of 2 mg/kg administered from GD 20-24, resulted in no embryotoxicity (doses up to 10 times the human 4.8 mg daily dose based on mg/m<sup>2</sup> comparison).

## 8.2 Lactation

### Risk Summary

CYCLOSET is contraindicated in lactating patients because its active ingredient, bromocriptine, inhibits lactation. In addition, serious and life-threatening adverse reactions including hypertension, myocardial infarction, seizures, stroke, and psychosis have been reported postmarketing in postpartum women who were administered bromocriptine for inhibition of lactation. The indication for use of bromocriptine for inhibition of lactation was withdrawn from bromocriptine-containing products and is not approved for CYCLOSET [see *Warnings and Precautions (5.7)*, *Adverse Reactions (6.2)*].

## 8.4 Pediatric Use

The safety and effectiveness of CYCLOSET in pediatric patients have not been established.

## 8.5 Geriatric Use

In the two clinical trials of CYCLOSET add-on to sulfonylurea therapy and in the monotherapy trial, a total of 54 patients randomized to CYCLOSET were  $\geq 65$  years old. In the 52-week safety trial, 601 of the 2,054 CYCLOSET-treated patients (29%) were  $\geq 65$  years old. No overall differences in safety or effectiveness were observed between the elderly and younger patients, but greater sensitivity of some older individuals cannot be ruled out [See *Clinical Studies (14)*].

## 10 OVERDOSAGE

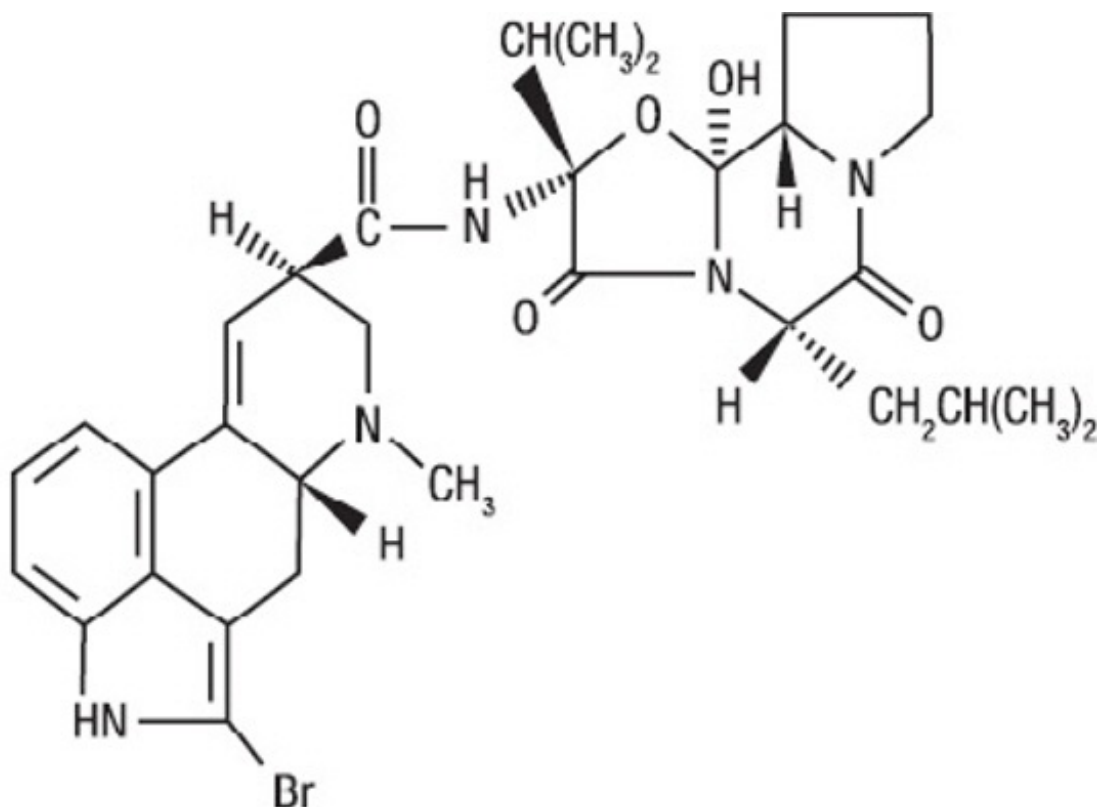
With another formulation of bromocriptine mesylate, the most commonly reported signs and symptoms associated with acute overdose were nausea, vomiting, constipation, diaphoresis, dizziness, pallor, severe hypotension, malaise, confusion, lethargy, drowsiness, delusions, hallucinations, and repetitive yawning. The lethal dose has not been established.

Treatment of overdose consists of removal of the drug by emesis (if conscious), gastric lavage, activated charcoal, or saline catharsis. Careful supervision and recording of fluid intake and output is essential. Hypotension should be treated by placing the patient in the Trendelenburg position and administering intravenous fluids. If satisfactory relief of hypotension cannot be achieved by using the above measures to their fullest extent, vasopressors should be considered.

## 11 DESCRIPTION

CYCLOSET Tablets contain micronized bromocriptine mesylate, an ergot derivative. Bromocriptine mesylate is chemically designated [Ergotaman-3',6',18-trione, 2-bromo-12'-hydroxy-2'-(1-methylethyl)-5'-(2-methylpropyl)-, monomethanesulfonate (salt), (5' $\alpha$ )-]. CYCLOSET is a single enantiomer with absolute configuration 5 *R*, 8 *R*, 2' *R*, 5' *S*, 11' *S*, 12' *S*.

The structural formula of bromocriptine is shown below:



Bromocriptine mesylate in CYCLOSET is a white or slightly colored micronized crystalline powder with a molecular formula of  $C_{32}H_{40}BrN_5O_5 \cdot CH_4SO_3$  and a molecular weight of 750.72. CYCLOSET Tablets contain bromocriptine mesylate USP in an amount equivalent to 0.8 mg. of bromocriptine. Each tablet contains the following inactive ingredients: lactose, corn starch, magnesium stearate, colloidal silicon dioxide, and citric acid.

## 12 CLINICAL PHARMACOLOGY

### 12.1 Mechanism of Action

CYCLOSET contains bromocriptine mesylate, a sympatholytic, dopamine D2 receptor agonist. In patients with type 2 diabetes, timed morning administration of CYCLOSET is associated with increased insulin sensitivity and glucose disposal and reduced fasting and postprandial hyperglycemia throughout the meals of the day without raising plasma insulin levels.

### 12.2 Pharmacodynamics

#### Postprandial Glucose and Insulin Response to a Meal

Patients with type 2 diabetes and inadequate glycemic control on diet alone were randomized to CYCLOSET or placebo in a 24-week monotherapy clinical trial. At baseline and study end, plasma samples for insulin and glucose were obtained before and 1 hour, and 2 hours after standardized meals for breakfast, lunch, and dinner. In this trial, once-daily (8 a.m.) CYCLOSET improved postprandial glucose without increasing plasma insulin concentrations.

#### Insulin-Mediated Glucose Disposal

Patients with type 2 diabetes and inadequate glycemic control on sulfonylurea therapy were randomized to CYCLOSET or placebo in a 16-week clinical trial. In this trial CYCLOSET therapy improved insulin-mediated glucose disposal and glucose tolerance and resulted in lower plasma glucose and HbA1c levels.

### **12.3 Pharmacokinetics**

#### Absorption and Bioavailability

When administered orally, approximately 65-95% of the CYCLOSET dose of bromocriptine mesylate is absorbed. Due to extensive first-pass metabolism, approximately 7% of the dose reaches the systemic circulation. Under fasting conditions the time to maximum plasma concentration is 53 minutes. In contrast, following a standard high-fat meal, the time to maximum plasma concentration is increased to approximately 90-120 minutes. Also, the relative bioavailability of CYCLOSET is increased under fed as compared to fasting conditions by an average of approximately 55-65% (increase in AUC<sub>inf</sub>).

#### Distribution

Bromocriptine is 90-96% bound to plasma proteins. The volume of distribution is approximately 61 L.

#### Metabolism

Bromocriptine mesylate is extensively metabolized in the gastrointestinal tract and liver. Metabolism by CYP3A4 is the major metabolic pathway. Most of the absorbed dose (approximately 93%) undergoes first-pass metabolism. The remaining 7% reaches the systemic circulation.

#### Excretion

The major route of excretion of bromocriptine is in the bile with the remaining approximately 2-6% of an oral dose excreted via the urine. The elimination half-life is approximately 6 hours. Prior consumption of a standard high-fat meal has little to no effect on the elimination half-life of CYCLOSET.

#### Specific Populations

##### Renal Impairment

No pharmacokinetic studies have been conducted in patients with renal impairment. Although the kidney is a minor pathway for elimination of CYCLOSET, caution should be used in patients with renal impairment.

##### Hepatic Impairment

No pharmacokinetic studies have been conducted in patients with hepatic impairment. Because CYCLOSET is predominantly metabolized by the liver, caution should be used in patients with hepatic impairment.

##### Gender

The plasma exposure of CYCLOSET is increased 18-30% in females compared to males.

##### Geriatric

No pharmacokinetic studies have been conducted in geriatric subjects.

## Pediatric

Studies characterizing the pharmacokinetics of CYCLOSET in pediatric patients have not been performed.

## Race

Studies characterizing the pharmacokinetics of CYCLOSET among different ethnic groups have not been performed.

## Drug Interactions

### In Vitro Assessment

Although bromocriptine is a competitive inhibitor of CYP3A4, in vivo drug interaction potential is low because the inhibitory potency for CYP3A4 is approximately 10,000-fold higher than the maximum plasma levels reached in vivo ( $C_{max}$  of approximately 80-125 pg/mL) following a 4.8 mg oral dose of CYCLOSET.

Agents inducing CYP3A4 activity such as rifampin or dexamethasone would be expected to decrease CYCLOSET plasma levels. There was no significant in vitro inhibition of other major CYP450 enzymes (1A2, 2C9/19, 2D6) by bromocriptine.

### In Vivo Assessment

The concomitant use of macrolide antibiotics such as erythromycin (250 mg four times a day), a known inhibitor of CYP3A4, along with bromocriptine (5 mg) was shown to increase the AUC (2.8-fold) and  $C_{max}$  (4.6-fold) of bromocriptine [see *Dosage and Administration (2.3)*, *Drug Interactions (7)*].

## **13 NONCLINICAL TOXICOLOGY**

### **13.1 Carcinogenesis, Mutagenesis, Impairment of Fertility**

#### Carcinogenesis

In a 74-week dietary study in mice at doses up to 50 mg/kg/day (60 times the human 4.8 mg daily dose, based on mg/m<sup>2</sup> comparison), there was no evidence of tumorigenicity.

In a 100-week dietary carcinogenicity study in rats at doses of 1.8, 9.9 and 44.5 mg/kg/day (up to 107 times the human 4.8 mg daily dose, based on mg/m<sup>2</sup> comparison), there was a significant increase in the incidence of malignant uterine neoplasms at  $\geq 9.9$  mg/kg/day ( $\geq 24$ -times the human 4.8 mg daily dose, based on mg/m<sup>2</sup> comparison). The increase in uterine neoplasms was probably due to the inhibition of prolactin-stimulated progesterone secretion resulting in estrogen domination and endometrial stimulation in the aging rat. Because prolactin does not play a role in human progesterone production, this finding is unlikely to be clinically relevant.

#### Mutagenicity

Bromocriptine was not mutagenic in the in vitro Ames bacterial mutation assay, the V79 Chinese hamster fibroblast mutagenicity test, the in vivo bone marrow micronucleus test in mice and the in vivo Chinese hamster bone marrow chromosomal aberration test.

#### Impairment of Fertility

There was no effect on fertility in female rats treated with oral doses of 1 and 3 mg/kg (2 to 7 times the human 4.8 mg daily dose, based on mg/m<sup>2</sup> comparison) from two weeks prior to mating through two weeks post mating or throughout lactation. Postnatal pup weight gain was reduced dose-dependently in treated groups, probably due to lactation inhibition.

In male rats administered oral doses of 2, 10, and 50 mg/kg/day (up to 120 times the human 4.8 mg daily dose, based on mg/m<sup>2</sup> comparison) that were mated with untreated females, there was no effect on mating or fertility. However, there was a slight increase in postnatal (post-partum days 0-21) pup mortality in the 10 and 50 mg/kg/day groups (24-120 times the human 4.8 mg daily dose, based on mg/m<sup>2</sup> comparison).

## 14 CLINICAL STUDIES

A total of 3,723 patients with type 2 diabetes were randomized across 4 double-blind, placebo-controlled clinical trials conducted to evaluate the safety and glycemic efficacy of CYCLOSET. In the pooled 24-week monotherapy trial and the two 24-week add-on to sulfonylurea trials (N = 653), the mean age of the CYCLOSET-treated patients (N = 324) was 55 years, 71% were male and 73% Caucasian. In the 52-week safety trial (N = 3,070), the mean age for the entire study population was 60 years and 43% of patients were female, 68% were Caucasian, 17% were Black, 13% were Hispanic, and 1% were Asian.

In all 4 clinical trials, patients assigned to treatment with CYCLOSET received an initial dose of 0.8 mg, which was increased by 0.8 mg each week for 6 weeks (4.8 mg/day final dose) if no intolerance occurred or until the maximum tolerated dose  $\geq 1.6$  mg/day was reached. In patients with type 2 diabetes, treatment with CYCLOSET produced clinically significant improvements in HbA1c and postprandial glucose (PPG).

### 14.1 Monotherapy

A total of 159 adults with type 2 diabetes, overweight (body mass index  $\geq 26.0$  kg/m<sup>2</sup> for males and  $\geq 28.0$  kg/m<sup>2</sup> for females), and inadequate glycemic control (HbA1c 7.5-11%) participated in a 24-week, placebo-controlled, monotherapy trial that evaluated the efficacy and safety of CYCLOSET as an adjunct to diet and exercise. Mean body weight at baseline was 93 kg in the CYCLOSET group and 96 kg in the placebo group. Mean HbA1c at baseline was 9.0% in the CYCLOSET group and 8.8% in the placebo group. Mean duration of diabetes at baseline was 5 years in the CYCLOSET group and 4 years in the placebo group. Of the 80 patients in the CYCLOSET group, 69% (N = 55) achieved the maximum daily dose of 4.8 mg. CYCLOSET improved HbA1c and fasting plasma glucose compared to placebo (Table 2). Mean change from baseline in body weight was +0.2 kg in the CYCLOSET group (N = 78) and +0.5 kg in the placebo group (N = 77).

**Table 2: Changes in Glycemic Parameters in a 24-Week Placebo-Controlled Study of CYCLOSET as Monotherapy in Patients with Type 2 Diabetes \***

	<b>CYCLOSET N = 80 (1.6 - 4.8 mg)</b>	<b>Placebo N = 79</b>



<b>HbA1c (%)</b>	<b>N = 74</b>	<b>N = 74</b>
Baseline (mean)	9.0	8.8
Change from baseline (adj. mean)	-0.1	0.3
Difference from placebo (adj. mean)	-0.4 †	
<b>Fasting Plasma Glucose (mg/dL)</b>	<b>N = 76</b>	<b>N = 75</b>
Baseline (mean)	215	205
Change from baseline (adj. mean)	0	23
Difference from placebo (adj. mean)	-23 ‡	

P-value calculated by ANOVA;

\* intent-to-treat population with last observation carried forward

† p = 0.05,

‡ p = 0.005

## 14.2 Combination Therapy

### CYCLOSET Add-on to Sulfonylurea Therapy

Patients with type 2 diabetes and inadequate glycemic control (HbA1c 7.8-12.5%) on sulfonylurea therapy (mean HbA1c 9.4%) participated in Study L, a 24-week, randomized, double-blind, placebo-controlled trial that evaluated the safety and glycemic efficacy of CYCLOSET when added to stable sulfonylurea therapy. The mean duration of diabetes was 6 years in the CYCLOSET group and 8 years in the placebo group. The range of body mass index was 26-40 kg/m<sup>2</sup> for men and 28-40 kg/m<sup>2</sup> for women, with a mean of 32 kg/m<sup>2</sup> in both treatment groups. Of the 122 patients in the CYCLOSET group, 83 (68%) achieved the maximum dose of study drug. The mean change from baseline in body weight was +0.9 kg in the CYCLOSET group and +0.5 kg in the placebo group.

In another similarly designed trial, Study K, patients with type 2 diabetes and inadequate glycemic control (HbA1c 7.8-12.5 %) on stable sulfonylurea therapy were randomized to add-on therapy with either CYCLOSET (N = 122) or placebo (N = 123). The range of body mass index was 26-40 kg/m<sup>2</sup> for men and 28-40 kg/m<sup>2</sup> for women, with a mean of 32 kg/m<sup>2</sup> in the CYCLOSET group and 33 kg/m<sup>2</sup> in the placebo group. Of the 122 patients in the CYCLOSET group, 91 (75%) achieved the maximum dose of study drug. Mean change from baseline in body weight was +1.4 kg in the CYCLOSET group and +0.5 kg in the placebo group. CYCLOSET improved HbA1c and fasting blood glucose concentrations compared to placebo (Table 3).

**Table 3: Changes in Glycemic Parameters for CYCLOSET Versus Placebo in Two Add-on to Sulfonylurea Trials**

	<b>Study K*</b>		<b>Study L*</b>	
	<b>CYCLOSET Add-on to Sulfonylurea N = 122</b>	<b>Placebo Add-on to Sulfonylurea N = 123</b>	<b>CYCLOSET Add-on to Sulfonylurea N = 122</b>	<b>Placebo Add-on to Sulfonylurea N = 127</b>
<b>HbA1c (%)</b>	<b>n = 114</b>	<b>n = 122</b>	<b>n = 114</b>	<b>n = 123</b>
Baseline (mean)	9.3	9.4	9.3	9.4
Change from baseline (adj. mean)	-0.1	0.4	-0.4	0.3

Difference from placebo (adj. mean)	-0.5 †		-0.6 †	
<b>Fasting Plasma Glucose (mg/dL)</b>	<b>n = 116</b>	<b>n = 119</b>	<b>n = 113</b>	<b>n = 123</b>
Baseline (mean)	216	227	220	226
Change from baseline (adj. mean)	10	28	3	23
Difference from placebo (adj. mean)	-18 ‡		-20 §	

P-value calculated by ANOVA;

\* intent-to-treat population using last observation carried forward between-group change from baseline in HbA1c

† p ≤ 0.001,

‡ p = 0.02;

§ p = 0.006

### CYCLOSET Add-on to Various Oral Antidiabetic Agents

Patients with type 2 diabetes receiving various antidiabetic therapies (mean baseline HbA1c 8.3%) participated in a 52-week randomized, double-blind, placebo-controlled safety trial [see Adverse Reactions (6.1)]. The daily CYCLOSET dose was initiated at 0.8 mg and increased by 0.8 mg each week for 6 weeks if no intolerance occurred or until the maximum tolerated dose ≥1.6 mg/day was reached. Approximately 70% of patients assigned to treatment with CYCLOSET reached the maximum daily dose of 4.8 mg. Physicians were instructed to adjust the dosage of concomitant diabetes therapies to avert hypoglycemia or uncontrolled hyperglycemia. Doses of background antidiabetic medications could be adjusted at any time during the trial and additional antidiabetic medications were permitted after week 12, if needed to maintain ideal glycemic control. Mean baseline HbA1c was 7.0% in both treatment groups. The least-squares mean change in HbA1c from baseline to week 24 was 0.0% with CYCLOSET (N = 2049) and +0.2% with placebo (N = 1015). Because many patients (60%) were already at treatment goal at baseline (HbA1c <7%), pre-specified subgroup analyses of glycemic efficacy (change in HbA1c from baseline to week 24) were conducted for patients who had inadequate glycemic control (baseline HbA1c ≥7.5%) on 1-2 oral antidiabetic therapies at the time of study entry. Patients receiving CYCLOSET, compared to placebo, experienced a significant improvement in HbA1c when used as adjunctive therapy to 1-2 oral antidiabetic medications, including the subgroup of patients treated only with background metformin + sulfonylurea (Table 4). The mean change in body weight for the glycemic efficacy subgroup (N = 559) from baseline to week 24 was -0.1 kg with CYCLOSET and +0.1 kg. The mean change in body weight for the entire study population (N = 3070) from baseline to week 52 was +0.2 kg with CYCLOSET and +0.1 kg with placebo.

**Table 4: Changes in HbA1c from Baseline to Week 24 in the CYCLOSET Safety Trial Subgroup of Patients with Type 2 Diabetes and Inadequate Glycemic Control (Baseline HbA1c ≥7.5%) on 1-2 Oral Antidiabetic Medications \***

	<b>24-Week Intent-to-Treat</b>	
	<b>CYCLOSET</b>	<b>Placebo</b>

<b>Adjunct to 1-2 Oral Antidiabetic Medications</b>	<b>N = 376</b>	<b>N = 183</b>
HbA1c (%)		
Baseline mean	8.3	8.4
Change from baseline (adjusted mean)	-0.4	0.0
Difference from placebo (adjusted mean)	-0.5 †	
% Patients achieving HbA1c of ≤7.0	25	9
<b>Adjunct to Metformin + Sulfonylurea Only‡</b>	<b>N = 177</b>	<b>N = 90</b>
HbA1c (%)		
Baseline mean	8.3	8.3
Change from baseline (adjusted mean)	-0.5	0.0
Difference from placebo (adjusted mean)	-0.5 †	
% Patients achieving HbA1c of ≤7.0	27	9

P-value is based on an ANCOVA model with treatment and center as fixed effects, and baseline HbA1c as covariates;

\* intent-to-treat population using last observation carried forward between-group change from baseline in HbA1c

† p<0.001

‡ patients in the "metformin + sulfonylurea only" subgroup are also counted in the "adjunct to 1-2 oral antidiabetic medications" subgroup

### **14.3 Changes in Lipids and Blood Pressure**

CYCLOSET does not have an unfavorable effect on fasting plasma lipids.

CYCLOSET has not demonstrated an unfavorable hypertensive effect on blood pressure. Hypotension has been reported with use of CYCLOSET in clinical trials [see *Warnings and Precautions (5.1)*].

### **16 HOW SUPPLIED/STORAGE AND HANDLING**

CYCLOSET 0.8 mg tablets are WHITE and round with "C" on one side and "9" on the other.

The tablets are supplied as follows:

NDC 68012-258-20 unit-of-use bottles of 200

NDC 68012-258-21 unit-of-use bottles of 21 (samples only).

#### Storage

Store and dispense: At 20-25°C (68-77°F) in a tight, light-resistant container. See USP Controlled Room Temperature.

### **17 PATIENT COUNSELING INFORMATION**

Advise the patient to read the FDA-approved patient labeling (Patient Information).

#### *Hypotension*

Advise patients that they may develop postural (orthostatic) hypotension with or without symptoms such as dizziness, nausea, and diaphoresis. Hypotension and syncope may

occur more frequently during initial therapy or with an increase in dose at any time. During early treatment with CYCLOSET, advise patients to make slow postural changes and to avoid situations that could predispose to serious injury if syncope was to occur [see Warnings and Precautions (5.1)] .

#### *Impulse Control/Compulsive Behaviors*

Advise patients that they may experience impulse control and/or compulsive behaviors while taking CYCLOSET and to inform their physician or healthcare provider if they develop new or increased gambling urges, sexual urges, uncontrolled spending, binge or compulsive eating, or other urges while being treated with CYCLOSET [see Warnings and Precautions (5.3)] .

#### *Somnolence*

Advise patients that CYCLOSET may cause somnolence. Advise patients not to operate heavy machinery if symptoms of somnolence occur [see Warnings and Precautions (5.4)] .

#### *Pregnancy and Lactation*

Advise patients not to take CYCLOSET postpartum or while lactating [see Warnings and Precautions (5.7), Use in Specific Populations (8.2)] . Serious and life-threatening adverse reactions including hypertension, myocardial infarction, seizures, stroke and psychosis have been reported in postpartum women who were administered bromocriptine for inhibition of lactation.

#### *Missed Doses*

Advise patients to take CYCLOSET within 2 hours after waking in the morning. If the morning dose is missed, instruct patients to take their usual dose the following morning. Doses of CYCLOSET should not be doubled the following morning.

#### **Manufactured for:**

VeroScience, LLC  
Tiverton, RI 02878 USA

#### **Distributed by:**

Salix Pharmaceuticals, a division of  
Bausch Health US, LLC  
Bridgewater, NJ 08807 USA

#### **Printed in USA**

**For information for healthcare professionals, call 1-800-321-4576.**

For patent information: <http://veroscience.com/products/patents.html>

Cycloset is a registered trademark of VeroScience LLC, Tiverton, RI 02878 USA used under license.

9625403 70014086

**Patient Information**  
**CYCLOSET<sup>®</sup> (Sikloset)**  
**(bromocriptine mesylate tablets)**  
**for oral use**

Read this Patient Information that comes with CYCLOSET before you start taking it and each time you get a refill. There may be new information. This information does not take the place of talking with your healthcare provider about your medical condition or treatment.

### **What is CYCLOSET?**

- CYCLOSET is a prescription medicine used with diet and exercise to lower blood sugar in adults with type 2 diabetes.
- CYCLOSET is not for people with type 1 diabetes.
- CYCLOSET is not for people with diabetic ketoacidosis.
- It is not known if CYCLOSET is safe and effective in children.

### **Who should not take CYCLOSET?**

#### **Do not take CYCLOSET if you:**

- are allergic to bromocriptine or any of the ingredients in CYCLOSET. See the end of this Patient Information leaflet for a complete list of ingredients in CYCLOSET.
- are allergic to ergot medicines. Ask your healthcare provider for a list of these medicines, if you are not sure.
- have fainting (syncopal) migraine headaches.
- are a woman who has recently given birth to a child (postpartum). CYCLOSET can cause serious and life-threatening problems including high blood pressure (hypertension), heart attack, seizures, stroke and psychosis (losing touch with reality).
- are breastfeeding.

Talk to your healthcare provider before taking CYCLOSET if you have any of these conditions.

### **What should I tell my healthcare provider before taking CYCLOSET?**

#### **Before taking CYCLOSET, tell your healthcare provider about all of your medical conditions, including if you:**

- have ever passed out (fainted).
- have migraine headaches.
- have or have had low blood pressure (hypotension).
- take medicines for high blood pressure (hypertension).
- have or have had a mental health problem, especially a psychotic disorder.
- are pregnant or plan to become pregnant. It is not known if CYCLOSET will harm your unborn baby. If you are pregnant, talk with your healthcare provider about the best way to control your blood sugar while you are pregnant.

**Tell your healthcare provider about all the medicines you take**, including prescription and over-the-counter medicines, vitamins, and herbal supplements.

#### **Especially tell your healthcare provider if you take:**

- medicines for mental health problems, especially anti-psychotic medicines called dopamine receptor antagonists
- medicines for migraine or other types of headaches
- other medicines that work like CYCLOSET (dopamine receptor agonists) to treat conditions such as Parkinson's disease, high levels of a hormone called prolactin in your blood (hyperprolactinemia), restless leg syndrome and too much growth hormone (acromegaly)

- medicines for type 2 diabetes

**Ask your healthcare provider or pharmacist for a list of these medicines if you are not sure.**

CYCLOSET may affect the way other medicines work, and other medicines may affect how CYCLOSET works.

Know the medicines you take. Keep a list of your medicines and show it to your healthcare provider and pharmacist when you get a new medicine.

### **How should I take CYCLOSET?**

- Take CYCLOSET exactly as your healthcare provider tells you to take it.
- Take CYCLOSET by mouth each morning with food.
- Take CYCLOSET within 2 hours after waking in the morning.
- If you miss your morning dose, wait until the next morning to take your medication. Do not take a double dose of CYCLOSET.
- During periods of stress on the body, such as fever, trauma, infection, or surgery, your medication needs may change. Contact your healthcare provider right away as your medication needs change.
- If you take too much CYCLOSET, call your healthcare provider or go to the nearest emergency department right away.
- While taking CYCLOSET:
  - check your blood sugar as your healthcare provider tells you to
  - stay on your prescribed diet and exercise program
  - talk to your doctor about how to prevent, recognize, and manage low blood sugar (hypoglycemia), high blood sugar (hyperglycemia), and complications of diabetes
  - see your healthcare provider for regular blood tests, including your blood sugar levels and hemoglobin A1C

### **What are the possible side effects of CYCLOSET?**

**CYCLOSET may cause serious side effects, including:**

- **Low blood pressure (hypotension) including low blood pressure when you suddenly change positions (orthostatic hypotension).** This can happen more often when first starting CYCLOSET or if your dose is increased. Symptoms of low blood pressure when you suddenly change positions can include dizziness, nausea, sweating, fainting or light-headedness. Stand up slowly when moving from a sitting or lying position. You should avoid activities that could cause injury if you feel light-headed or faint.
- **Feeling tired and sleepy (somnolence).** Tiredness and sleepiness can happen with CYCLOSET, especially when first starting CYCLOSET. Tiredness and sleepiness are common but can also be serious. If you feel tired and sleepy while taking CYCLOSET, you should not drive or operate heavy machinery.
- **Uncontrollable (compulsive) behaviors.** CYCLOSET is in a class of medicines that may cause some people to get urges to behave in a way that may be unusual for them. Examples of these behaviors include strong urges to gamble, increased sexual urges, strong urges to spend money, binge eating or eating that you cannot control. If you or your family members notice that you are developing any unusual behaviors, talk to your healthcare provider. These behaviors may go away if your dose of CYCLOSET is lowered or stopped.
- **Serious and life-threatening problems in women who have recently given birth to a child (postpartum).** See " **Who should not take CYCLOSET?**"

**The most common side effects of CYCLOSET include:**

- nausea
- headache
- dizziness
- vomiting

Tell your healthcare provider if you have any side effect that bothers you or that does not go away.

These are not all the possible side effects of CYCLOSET. For more information, ask your healthcare provider or pharmacist.

Call your doctor for medical advice about side effects. You may report side effects to FDA at 1-800-FDA-1088.

**How should I store CYCLOSET?**

- Store CYCLOSET at room temperature between 68°F and 77°F (20°C and 25°C).
- Store CYCLOSET in a tight, light resistant container.

**Keep CYCLOSET and all medicines out of the reach of children.**

**General information about the safe and effective use of CYCLOSET.**

Medicines are sometimes prescribed for purposes other than those listed in a Patient Information leaflet. Do not use CYCLOSET for a condition for which it was not prescribed. Do not give CYCLOSET to other people, even if they have the same symptoms that you have. It may harm them.

This leaflet summarizes the most important information about CYCLOSET. If you would like more information, talk with your healthcare provider. You can ask your healthcare provider or pharmacist for information about CYCLOSET that is written for health professionals.

**What are the ingredients in CYCLOSET?**

**Active ingredient:** bromocriptine mesylate

**Inactive ingredients:** lactose, corn starch, magnesium stearate, colloidal silicon dioxide, and citric acid

**Manufactured for:**

VeroScience, LLC  
Tiverton, RI 02878

**Distributed by:**

Salix Pharmaceuticals, a division of  
Bausch Health US, LLC  
Bridgewater, NJ 08807 USA

**For information for healthcare professionals, call 1-800-321-4576.**

CYCLOSET is a registered trademark of:  
VeroScience, LLC  
Tiverton, RI 02878

**For more information, go to [www.CYCLOSET.com](http://www.CYCLOSET.com) or call 1-800-321-4576.**

This Patient Information has been approved by the U.S. Food and Drug Administration. Revised: 08/2020

**PRINCIPAL DISPLAY PANEL - 0.8 mg Tablet Bottle Label**

NDC 68012-258-21

CYCLOSET®

bromocriptine mesylate tablets

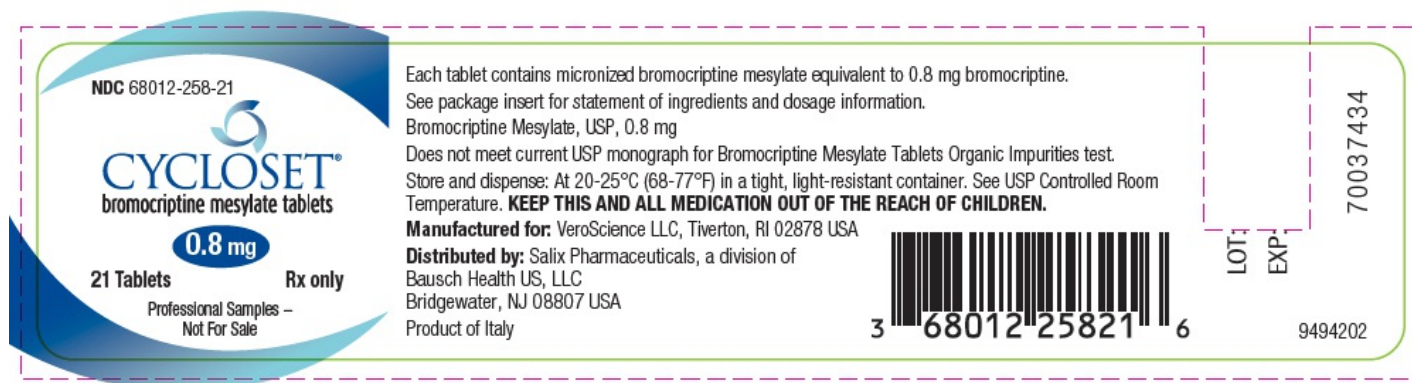
0.8 mg

21 Tablets

Rx only

Professional Samples -

Not For Sale



## CYCLOSET

bromocriptine mesylate tablet

### Product Information

<b>Product Type</b>	HUMAN PRESCRIPTION DRUG	<b>Item Code (Source)</b>	NDC:68012-258
<b>Route of Administration</b>	ORAL		

### Active Ingredient/Active Moiety

Ingredient Name	Basis of Strength	Strength
<b>BROMOCRIPTINE MESYLATE</b> (UNII: FFP983J3OD) (BROMOCRIPTINE - UNII:3A64E3G5ZO)	BROMOCRIPTINE	0.8 mg

### Inactive Ingredients

Ingredient Name	Strength
<b>LACTOSE, UNSPECIFIED FORM</b> (UNII: J2B2A4N98G)	
<b>STARCH, CORN</b> (UNII: O8232NY3SJ)	
<b>MAGNESIUM STEARATE</b> (UNII: 70097M6130)	
<b>SILICON DIOXIDE</b> (UNII: ETJ7Z6XBU4)	
<b>CITRIC ACID MONOHYDRATE</b> (UNII: 2968PHW8QP)	

### Product Characteristics

<b>Color</b>	white (white)	<b>Score</b>	no score
<b>Shape</b>	ROUND (ROUND)	<b>Size</b>	6mm



<b>Flavor</b>		<b>Imprint Code</b>	C;9
<b>Contains</b>			

### Packaging

#	Item Code	Package Description	Marketing Start Date	Marketing End Date
1	NDC:68012-258-21	21 in 1 BOTTLE; Type 0: Not a Combination Product	11/15/2010	06/30/2025
2	NDC:68012-258-20	200 in 1 BOTTLE; Type 0: Not a Combination Product	11/15/2010	07/31/2025

### Marketing Information

Marketing Category	Application Number or Monograph Citation	Marketing Start Date	Marketing End Date
NDA	NDA020866	11/15/2010	07/31/2025

**Labeler** - Santarus, Inc. (104286369)

### Establishment

Name	Address	ID/FEI	Business Operations
Patheon Pharmaceuticals Inc.		005286822	manufacture(68012-258)

### Establishment

Name	Address	ID/FEI	Business Operations
AMRI Italy S.r.l.		440365767	api manufacture(68012-258)

Revised: 10/2024

Santarus, Inc.